

A photograph of two brown cows grazing in a lush green field. The cows are in the foreground, with one slightly ahead of the other. In the background, there is a wire fence and a dense line of green trees. The text "AIM Bovine Statistics Report 2012" is overlaid in white, bold, sans-serif font in the upper center of the image.

AIM Bovine Statistics Report 2012

AIM Bovine Statistics Report 2012

The AIM Bovine Statistics Report 2012 provides comprehensive data on calf births, farm-to-farm and mart movements as well as details of cattle slaughtered in factories and abattoirs, live exports and on-farm bovine deaths.

The Report is compiled on an annual basis from data provided by farmers, livestock marts, factories, abattoirs and export locations to the Animal Identification and Movement (AIM) database managed by the Department of Agriculture, Food and the Marine. The Report contains a comprehensive list of livestock marts, abattoirs, factories, export points for live cattle and knackerries.

The AIM Bovine Statistics Report contains valuable statistical information for use by interested stakeholders to monitor trends in the beef and dairy sectors. Data and reports generated from the AIM system are provided by the Department to a range of organisations including Bord Bia, Central Statistics Office (CSO), Environmental Protection Agency (EPA), Irish Cattle Breeding Federation (ICBF), Teagasc as well as breed societies, farming organisations and Meat Industry Ireland (MII).

The Report is available in the 2012 Publications section of the Department's website www.agriculture.gov.ie. Updated reports are provided on the website each month on calf registrations, factory slaughterings, live exports and an age profile of the national herd.

Animal Identification and Movement (AIM) System

The Department of Agriculture, Food and the Marine maintains cattle traceability records on a central database known as the Animal Identification and Movement System (AIM). The AIM system records all birth, movements and disposals in accordance with EU requirements and therefore traces all bovines from birth to slaughter. The traceability system provides assurances to customers and consumers at home and abroad about the origin and traceability of beef, protects animal and human health and secures and maintains markets for Irish cattle and beef.

Uses of AIM

- Verify the origin, identity and life history of cattle entering the food chain.
- Pre-clear live exports.
- Assists in the testing and certification requirements for specific export markets.
- Management tool for disease control purposes in compliance with EU and national requirements and to facilitate identification and segregation of bovines for disease testing, tracing of cohorts and progeny.
- Plays a key role in facilitating compliance with EU and national requirements and in the management of a range of programmes other than those relating to animal health and food safety including:
 - Single Payment Scheme;
 - Compensatory Allowances Scheme;
 - Rural Environment Protection Scheme (REPS) and
 - Nitrates Regulations.

Issued by AIM Division, Backweston Campus

All rights reserved.

No part of this publication may be reproduced, stored in a retrieval system, or transmitted in any form or by any means, electronic, mechanical, photocopying, recording or otherwise without acknowledgement of the source.

Contents	4
----------	---

Chapter 1 – CALF BIRTH REGISTRATION DATA

SECTION 1	
Calf births by month	7
Calf births by month and gender	7
Calf births by county, gender and sire type	8
Number of calves per breeding herd	9
Total number of beef and dairy calves	10

SECTION 2	
Calf births by month and sire type	11
Calf births by month, gender and sire type	11

SECTION 3	
Calf Births by Month and by Breed of Dam	12

SECTION 4	
Sire Selection for beef Dams	13
Sire Selection for dairy dams	13
Breed composition of 2012-born calves	14

SECTION 5	
Cattle imports by Country of origin and Gender	15
Cattle imports for immediate slaughter by age	15
Cattle imports for breeding and production by country and age	16

CHAPTER 2 MOVEMENT DATA

SECTION 1	
Mart movements by month and gender	18
Mart movements for beef cattle by month, gender and age	19
Mart movements for dairy cattle by month, gender and age	20

SECTION 2	
Farm-to-farm movements by month and gender	21
Farm to farm movements for beef cattle by month, gender and age	22
Farm-to-farm movements for dairy cattle by month, gender and age	23

SECTION 3	
All cattle movements by month and by type	24
All cattle movements by month and gender	25

CHAPTER 3 DISPOSAL OF CATTLE

SECTION 1	
Overall summary of cattle disposals – graphs	27
Overall summary of cattle disposals	28

SECTION 2	
Slaughtering in export-approved plants by month and gender	29
Age profile of slaughterings of beef cattle by month and gender	30
Age profile of slaughterings of dairy cattle by month and gender	31

SECTION 3		
Slaughterings in Local Authority-approved abattoirs by month and gender		32
Age profile of slaughterings of beef cattle by month and gender		33
Age profile of slaughterings of dairy cattle by month and gender		34
SECTION 4		
On-farm deaths by month and gender		35
Age Profile of on-farm deaths for male beef cattle by month		36
Age Profile of on-farm deaths for female beef cattle by month		36
Age Profile of on-farm deaths for male dairy cattle by month		37
Age Profile of on-farm deaths for female dairy cattle by month		37
SECTION 5		
Stillborn calves by month and by gender		38
Stillborn calves by month, gender and sire		38
SECTION 6		
Live exports by month and gender		39
Age Profile of live exports for beef cattle by month and gender		40
Age Profile of live exports for dairy cattle by month and gender		41
Destination of live exports		42
Age Profile of live exports by breed		43
Destination of live exports by age		44
CHAPTER 4 - NATIONAL HERD DATA		
SECTION 1		
Age profile of live herd at 31/12/2012 by age		46
Cattle population by age		46
Cattle population by age and gender		46
SECTION 2		
Age profile of live herd at 31/12/2012 by county		47
SECTION 3		
Age profile of live herd at 31/12/2012 by breed		48
SECTION 4		
Age profile of live herd at 31/12/2012 by county and by breed		49
SECTION 5		
Profile of herd size at 31/12/2012		50
Imported animals in the live herd at 31/12/2012		51
Bovine population 2012		52
CHAPTER 5 – SUPPLIERS OF DATA		
Livestock marts		54
Local authority abattoirs		55
Approved export points		57
Licensed knackeries		58
Factories		59
Official list of breed codes		60

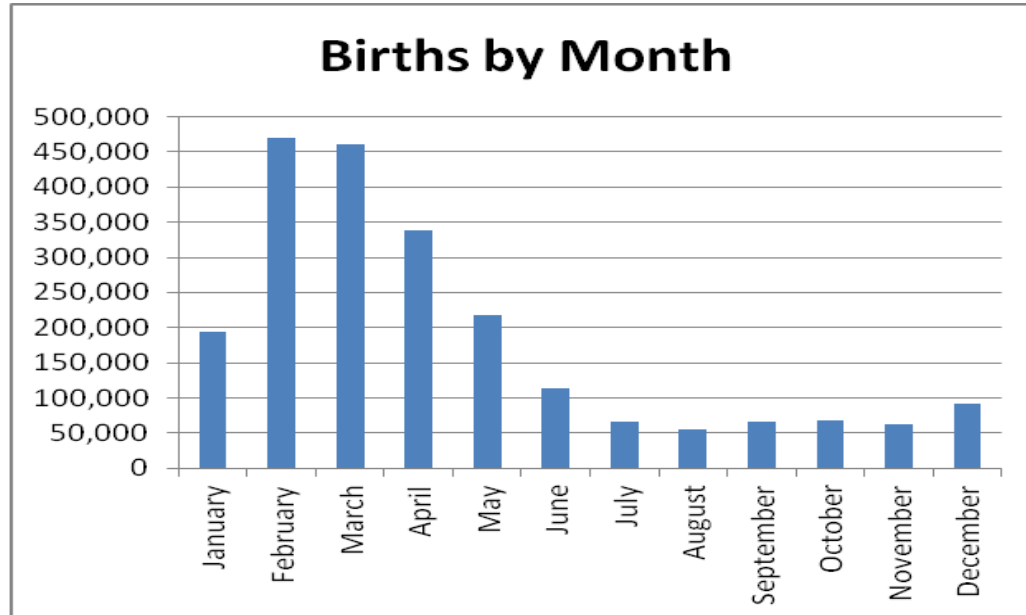
Chapter 1

Calf Birth Registration Data



SECTION 1

Calf Births by Month



Calf Births by Month and Gender

Month	Male	Female	Total
January	95,785	98,252	194,037
February	241,091	229,707	470,798
March	238,012	222,247	460,259
April	175,189	163,483	338,672
May	112,380	104,461	216,841
June	58,925	55,192	114,117
July	33,670	31,931	65,601
August	27,478	27,091	54,569
September	33,342	32,667	66,009
October	34,416	32,900	67,316
November	32,103	30,991	63,094
December	46,064	45,074	91,138
Total	1,128,455	1,073,996	2,202,451

Calf Births by County, Gender and Sire Type

County	Calves born to Beef Bull				Calves born to Dairy Bull			Totals	% of
	Male	Female	Total		Male	Female	Total		Total
Carlow	11,009	10,406	21,415		3,655	3,600	7,255	28,670	1.3
Cavan	31,303	29,652	60,955		10,604	10,152	20,756	81,711	3.7
Clare	45,043	43,009	88,052		8,635	8,162	16,797	104,849	4.8
Cork	90,041	83,811	173,852		102,370	98,505	200,875	374,727	17
Donegal	24,751	24,028	48,779		6,431	6,131	12,562	61,341	2.8
Dublin	2,388	2,369	4,757		782	781	1,563	6,320	0.3
Galway	59,853	56,920	116,773		8,649	8,600	17,249	134,022	6.1
Kerry	40,662	38,430	79,092		29,317	28,359	57,676	136,768	6.2
Kildare	11,160	10,821	21,981		3,648	3,673	7,321	29,302	1.3
Kilkenny	29,958	28,532	58,490		22,080	20,861	42,941	101,431	4.6
Laois	22,707	21,558	44,265		10,836	10,455	21,291	65,556	3
Leitrim	14,750	14,157	28,907		598	647	1,245	30,152	1.4
Limerick	38,069	35,103	73,172		31,584	30,679	62,263	135,435	6.1
Longford	15,620	14,888	30,508		2,462	2,364	4,826	35,334	1.6
Louth	8,041	7,336	15,377		4,778	4,581	9,359	24,736	1.1
Mayo	43,555	41,246	84,801		4,706	4,706	9,412	94,213	4.3
Meath	23,806	22,740	46,546		15,891	15,264	31,155	77,701	3.5
Monaghan	22,671	21,171	43,842		10,969	10,506	21,475	65,317	3
Offaly	21,150	19,957	41,107		6,936	6,951	13,887	54,994	2.5
Roscommon	29,504	28,203	57,707		1,548	1,606	3,154	60,861	2.8
Sligo	18,233	17,453	35,686		2,354	2,217	4,571	40,257	1.8
Tipperary	54,815	50,981	105,796		42,971	41,066	84,037	189,833	8.6
Waterford	23,223	21,777	45,000		20,551	20,067	40,618	85,618	3.9
Westmeath	22,878	21,765	44,643		6,275	6,306	12,581	57,224	2.6
Wexford	27,453	26,032	53,485		16,995	16,155	33,150	86,635	3.9
Wicklow	14,744	14,089	28,833		5,443	5,168	10,611	39,444	1.8
Total	747,387	706,434	1,453,821		381,068	367,562	748,630	2,202,451	

Number of Calves per Breeding Herd

County	No of Breeding Herds	% of Total Breeding Herds	Number of calves per breeding herd and % of total											
			1-10	%	11-24	%	25-49	%	50-74	%	75+	%		
Carlow	925	1.1	226	24.4	258	27.9	260	28.1	105	11.4	76	8.2		
Cavan	3,677	4.5	1,346	36.6	1,166	31.7	807	21.9	229	6.2	129	3.5		
Clare	4,908	6.0	1,692	34.5	1,753	35.7	1,040	21.2	271	5.5	152	3.1		
Cork	8,510	10.4	1,844	21.7	1,689	19.8	2,009	23.6	1,420	16.7	1,548	18.2		
Donegal	4,182	5.1	2,571	61.5	1,025	24.5	383	9.2	96	2.3	107	2.6		
Dublin	230	0.3	106	46.1	46	20.0	39	17.0	24	10.4	15	6.5		
Galway	8,410	10.3	4,250	50.5	2,476	29.4	1,267	15.1	281	3.3	136	1.6		
Kerry	4,863	5.9	1,709	35.1	1,288	26.5	989	20.3	477	9.8	400	8.2		
Kildare	1,056	1.3	395	37.4	246	23.3	241	22.8	89	8.4	85	8.0		
Kilkenny	2,254	2.7	372	16.5	442	19.6	601	26.7	457	20.3	382	16.9		
Laois	1,825	2.2	425	23.3	475	26.0	480	26.3	228	12.5	217	11.9		
Leitrim	2,651	3.2	1,632	61.6	782	29.5	194	7.3	30	1.1	13	0.5		
Limerick	3,653	4.5	976	26.7	811	22.2	843	23.1	524	14.3	499	13.7		
Longford	1,747	2.1	684	39.2	586	33.5	340	19.5	87	5.0	50	2.9		
Louth	727	0.9	254	34.9	164	22.6	155	21.3	68	9.4	86	11.8		
Mayo	7,294	8.9	4,166	57.1	2,217	30.4	728	10.0	121	1.7	62	0.9		
Meath	2,163	2.6	693	32.0	485	22.4	472	21.8	248	11.5	265	12.3		
Monaghan	2,843	3.5	979	34.4	895	31.5	655	23.0	208	7.3	106	3.7		
Offaly	1,900	2.3	601	31.6	486	25.6	469	24.7	198	10.4	146	7.7		
Roscommon	3,888	4.7	1,833	47.1	1,309	33.7	598	15.4	109	2.8	39	1.0		
Sligo	2,766	3.4	1,447	52.3	916	33.1	310	11.2	56	2.0	37	1.3		
Tipperary	4,466	5.4	906	20.3	916	20.5	1,182	26.5	703	15.7	759	17.0		
Waterford	1,605	2.0	241	15.0	272	16.9	375	23.4	306	19.1	411	25.6		
Westmeath	1,992	2.4	626	31.4	553	27.8	479	24.0	200	10.0	134	6.7		
Wexford	2,222	2.7	469	21.1	495	22.3	604	27.2	343	15.4	311	14.0		
Wicklow	1,246	1.5	362	29.1	369	29.6	258	20.7	128	10.3	129	10.4		
Total	82,003		30,805		22,120		15,778		7,006		6,294			

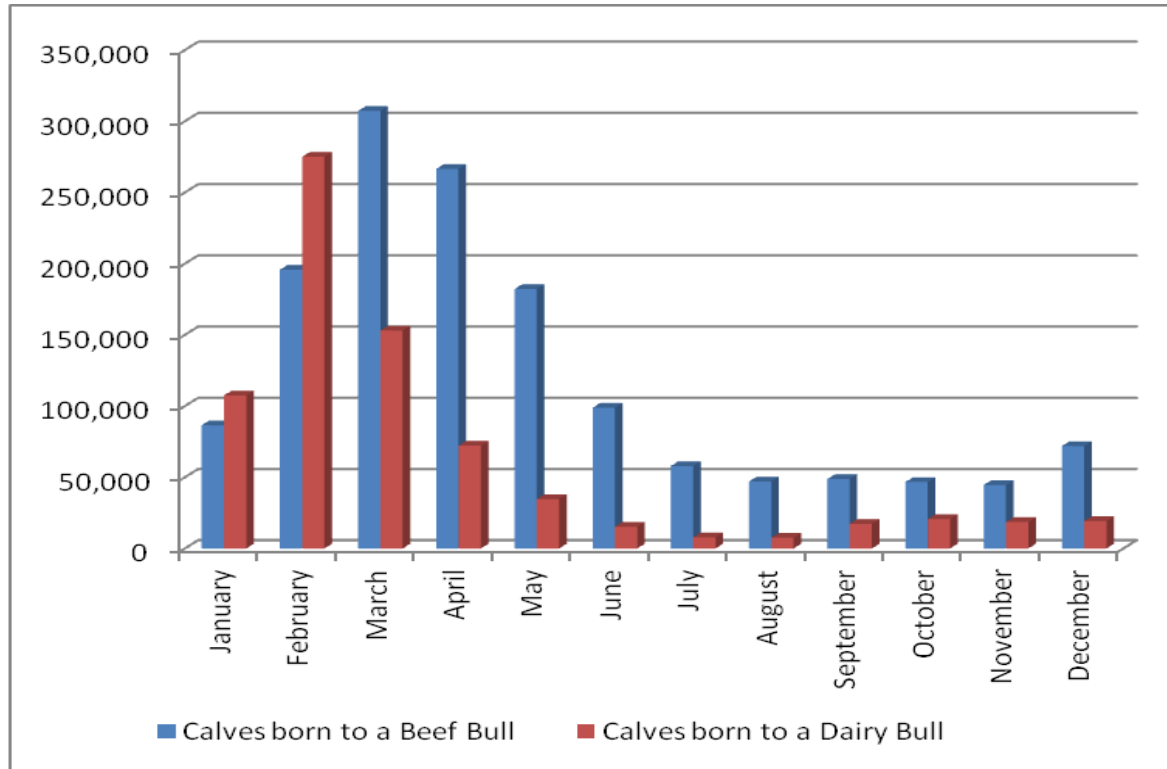
Total Number of Beef and Dairy Calves by County

For the purposes of this table, Beef and Dairy calves are defined by Breed of Dam

County	Beef Calves	% Beef		Dairy Calves	% Dairy		Total Calves
Carlow	17,845	62.2		10,825	37.8		28,670
Cavan	49,709	60.8		32,002	39.2		81,711
Clare	77,612	74.0		27,237	26.0		104,849
Cork	87,288	23.3		287,439	76.7		374,727
Donegal	44,958	73.3		16,383	26.7		61,341
Dublin	4,019	63.6		2,301	36.4		6,320
Galway	108,070	80.6		25,952	19.4		134,022
Kerry	48,564	35.5		88,204	64.5		136,768
Kildare	18,454	63.0		10,848	37.0		29,302
Kilkenny	40,568	40.0		60,863	60.0		101,431
Laois	36,473	55.6		29,083	44.4		65,556
Leitrim	28,188	93.5		1,964	6.5		30,152
Limerick	40,290	29.8		95,145	70.3		135,435
Longford	28,081	79.5		7,253	20.5		35,334
Louth	13,133	53.1		11,603	46.9		24,736
Mayo	79,474	84.4		14,739	15.6		94,213
Meath	36,878	47.5		40,823	52.5		77,701
Monaghan	34,793	53.3		30,524	46.7		65,317
Offaly	34,951	63.6		20,043	36.5		54,994
Roscommon	55,959	92.0		4,902	8.1		60,861
Sligo	32,761	81.4		7,496	18.6		40,257
Tipperary	70,207	37.0		119,626	63.0		189,833
Waterford	28,151	32.9		57,467	67.1		85,618
Westmeath	39,541	69.1		17,683	30.9		57,224
Wexford	36,994	42.7		49,641	57.3		86,635
Wicklow	23,626	59.9		15,818	40.1		39,444
Total	1,116,587	50.7		1,085,864	49.3		2,202,451

SECTION 2

Calf Births by Month and Sire Type



Calf Births by Month, Gender and Sire Type

Month	Calves born to a Beef Bull			Calves born to a Dairy Bull			Overall Total
	Male	Female	Total	Male	Female	Total	
January	43,832	42,716	86,548	51,953	55,536	107,489	194,037
February	100,186	95,538	195,724	140,905	134,169	275,074	470,798
March	157,997	149,227	307,224	80,015	73,020	153,035	460,259
April	138,149	128,365	266,514	37,040	35,118	72,158	338,672
May	94,460	87,704	182,164	17,920	16,757	34,677	216,841
June	51,071	47,786	98,857	7,854	7,406	15,260	114,117
July	29,841	28,059	57,900	3,829	3,872	7,701	65,601
August	23,958	23,096	47,054	3,520	3,995	7,515	54,569
September	24,792	23,932	48,724	8,550	8,735	17,285	66,009
October	23,803	22,869	46,672	10,613	10,031	20,644	67,316
November	22,778	21,761	44,539	9,325	9,230	18,555	63,094
December	36,520	35,381	71,901	9,544	9,693	19,237	91,138
Total	747,387	706,434	1,453,821	381,068	367,562	748,630	2,202,451

SECTION 3

Calf Births by Month and by Breed of Dam

Month	FR	LM	CH	SI	AA	HE	BB	SH	MO	SA	RB	BA	JE	MY	Other	Total
January	119,042	21,444	14,889	9,640	7,407	5,769	4,139	2,332	2,328	1,197	1,077	731	1,734	349	1,959	194,037
February	324,336	35,838	26,117	16,654	14,792	11,734	6,346	4,204	7,748	2,177	3,431	1,170	9,685	968	5,598	470,798
March	231,602	65,747	47,613	25,602	26,189	19,756	10,728	7,320	6,978	3,293	2,427	1,893	5,188	839	5,084	460,259
April	140,064	60,242	44,541	20,889	23,321	17,132	9,490	6,831	4,256	2,695	1,509	1,604	2,238	487	3,373	338,672
May	76,624	41,887	33,736	14,112	17,108	12,459	6,450	4,803	2,625	1,848	708	1,188	861	302	2,130	216,841
June	34,593	23,511	19,610	7,998	9,988	7,272	3,840	2,795	1,147	909	270	570	259	104	1,251	114,117
July	16,960	14,404	11,763	5,021	5,908	4,594	2,396	1,645	602	646	118	493	204	92	755	65,601
August	12,700	13,593	9,251	4,440	4,946	3,810	2,207	1,231	414	631	74	459	155	57	601	54,569
September	21,514	15,442	8,875	5,092	4,763	3,685	2,492	929	509	736	80	596	330	114	852	66,009
October	25,442	14,383	8,395	4,792	4,398	3,351	2,397	888	567	619	135	638	337	108	866	67,316
November	23,537	13,791	8,122	4,846	3,739	3,011	2,274	902	580	657	94	506	215	84	736	63,094
December	25,742	22,124	14,112	8,103	6,377	4,905	4,055	1,538	769	1,041	148	760	250	136	1,078	91,138
Total	1,052,156	342,406	247,024	127,189	128,936	97,478	56,814	35,418	28,523	16,449	10,071	10,608	21,456	3,640	24,283	2,202,451

FR: Friesian
HE: Hereford
RB: Rotbunte

LM: Limousin
BB: Belgian Blue
BA: Blonde D'Aquitaine

CH: Charolais
SH: Shorthorn
JE: Jersey

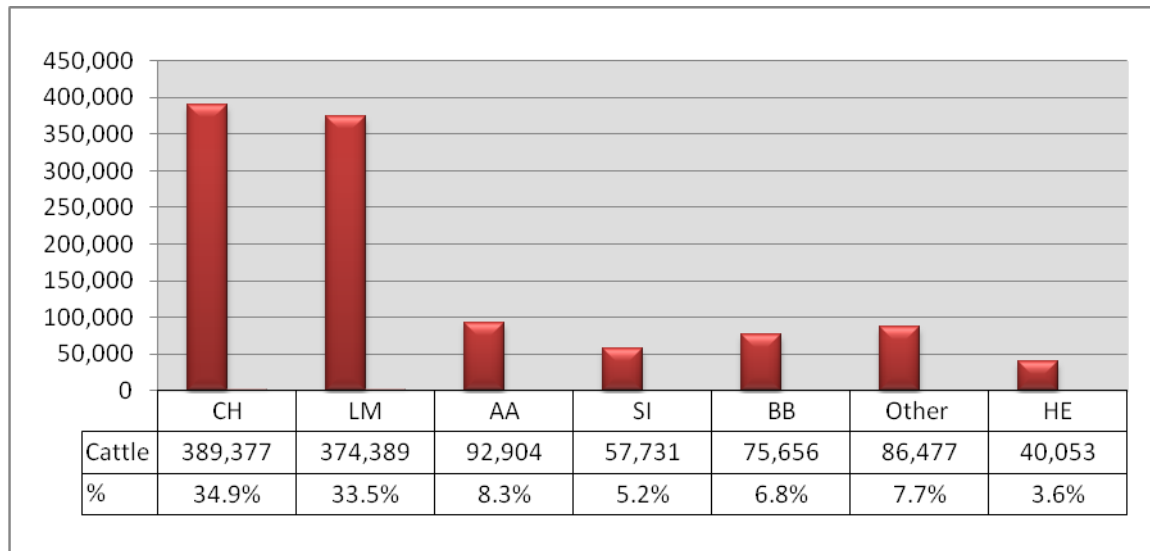
SI: Simmental
MO: Montbéliarde
MY: Meuse Rhine Yssel

AA: Aberdeen Angus
SA: Salers

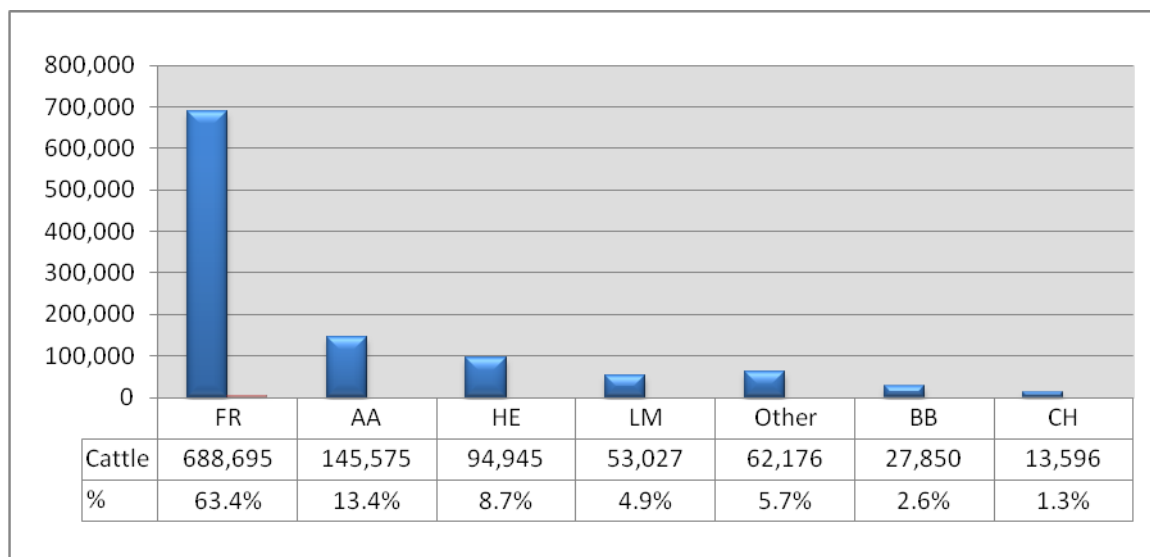
* For full list of breed codes see Appendix

SECTION 4

Sire Selection for Beef Dams



Sire Selection for Dairy Dams



Breed Composition of 2012 Born Calves

	Breed of dam																Total
	Breed	AA	BA	BB	CH	FR	HE	JE	LM	MO	MY	OT	RB	SA	SH	SI	
Breed of sire	AA	37,533	433	3,894	10,775	142,553	9,053	1,536	14,989	3,114	442	2,154	1,274	731	3,296	6,702	238,479
	BA	681	2,554	1,052	1,576	867	586	24	2,841	94	8	146	23	211	144	1,075	11,882
	BB	7,137	1,607	8,855	10,232	27,321	4,160	200	30,361	1,799	186	990	284	1,122	1,848	7,404	103,506
	CH	35,311	2,133	15,646	144,291	13,296	28,871	123	100,777	1,780	157	1,711	260	5,966	10,020	42,631	402,973
	FR	2,487	17	780	379	670,774	1,649	12,428	1,379	8,306	948	5,694	4,073	47	1,495	1,356	711,812
	HE	4,723	117	1,069	3,008	93,434	18,569	746	4,306	2,451	376	944	778	201	1,556	2,720	134,998
	JE	93	1	14	6	19,737	26	4,869	14	265	24	716	206	0	54	13	26,038
	LM	32,956	2,850	21,493	64,087	52,088	27,620	379	169,331	3,411	323	2,632	469	3,809	8,117	37,851	427,416
	MO	50	1	23	32	3,054	59	54	65	4,956	49	112	85	5	35	102	8,682
	MY	8	0	10	2	477	13	8	5	99	816	20	165	4	20	11	1,658
	RB	28	0	8	7	2,519	33	125	14	260	63	183	1,901	2	24	34	5,201
	SA	936	159	475	1,478	1,293	635	23	1,783	176	14	100	40	3,454	364	785	11,715
	SH	1,009	21	366	1,078	2,663	692	116	1,370	163	31	296	84	104	6,533	702	15,228
	SI	4,232	324	2,057	8,181	12,652	4,619	93	10,564	1,070	112	351	188	397	1,388	24,359	70,587
	Other	1,752	391	1,072	1,892	9,428	893	732	4,607	579	91	8,234	241	396	524	1,444	32,276
	Total	128,936	10,608	56,814	247,024	1,052,156	97,478	21,456	342,406	28,523	3,640	24,283	10,071	16,449	35,418	127,189	2,202,451

FR: Friesian
HE: Hereford
RB: Rotbunte

LM: Limousin
BB: Belgian Blue
BA: Blonde D'Aquitaine

CH: Charolais
SH: Shorthorn
JE: Jersey

SI: Simmental
MO: Montbéliarde
MY: Meuse Rhine Yssel

AA: Aberdeen Angus
SA: Salers

* For full list of breed codes see Appendix

SECTION 5

Cattle Imports by Country of Origin and Gender

	Male	Female	Total
UK *	6,998	12,116	19,114
Germany	2	1,880	1,882
Romania	607	663	1,270
France	79	623	702
Netherlands	2	179	181
Lithuania	1	145	146
Austria	2	126	128
Denmark	0	32	32
Belgium	10	0	10
Total	7,701	15,764	23,465
* Of the cattle imported from UK, 10,496 went for immediate slaughter			

Age Profile of Cattle Imports from UK which went for Immediate Slaughter

0 - 24 Mts	24 - 48 Mts	48 - 72 Mts	72 - 96 Mts	96 - 120 Mts	120 Mts +	Total
1,114	1,924	2,007	2,014	1,686	1,751	10,496

Cattle Imports for further breeding and production by Country of Origin and Age **

	0 - 12 Mts	12- 18 Mts	18 - 24 Mts	24 - 36 Mts	36 Mts +	Total
UK	5,165	656	573	686	1,538	8,618
Germany	1,793	16	34	38	1	1,882
Romania	1,268	2	0	0	0	1,270
France	123	372	58	96	53	702
Netherlands	83	25	35	34	4	181
Lithuania	146	0	0	0	0	146
Austria	122	2	0	4	0	128
Denmark	0	0	27	4	1	32
Belgium	3	3	3	0	1	10
Total	8,703	1,076	730	862	1,598	12,969

** Figure excludes cattle imported from UK which went for immediate slaughter

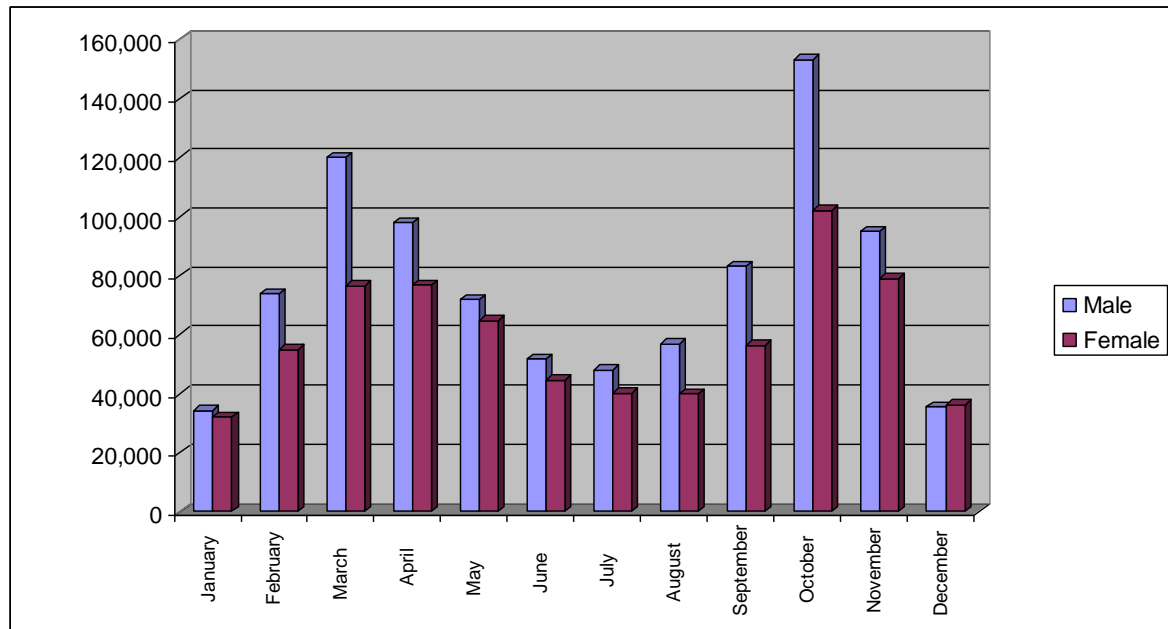
Chapter 2

Movement Data



SECTION 1

Mart Movements by Month and by Gender



Month	Male	Female	Total
January	34,241	32,158	66,399
February	73,799	54,959	128,758
March	120,133	76,517	196,650
April	98,007	76,919	174,926
May	71,847	64,821	136,668
June	51,618	44,672	96,290
July	48,096	40,146	88,242
August	56,970	40,044	97,014
September	83,249	56,318	139,567
October	153,153	102,130	255,283
November	95,126	78,957	174,083
December	35,608	36,172	71,780
Total	921,847	703,813	1,625,660
These figures includes 148,146 movements where the animal was unsold in the mart			

Age Profile of Mart Movements for Beef Cattle by Month and by Gender

For the purposes of this table, Beef Cattle are defined as the progeny of Bulls of a Beef Breed

Month	0 - 6 weeks		6 wks - 6 Mts		6 - 12 Mts		12 - 18 Mts		18 - 24 Mts		24 - 30 Mts		30 Mts +		Total
	M	F	M	F	M	F	M	F	M	F	M	F	M	F	
January	934	713	1,257	898	13,890	9,786	2,048	1,743	5,895	5,494	560	631	1,433	6,104	51,386
February	4,538	3,516	1,306	859	20,778	15,871	4,456	4,020	10,043	9,679	1,465	1,665	2,261	8,820	89,277
March	9,895	7,811	1,284	965	26,776	18,511	12,777	9,850	15,665	11,669	5,909	4,193	3,166	10,038	138,509
April	11,906	9,672	1,768	1,333	18,393	13,272	16,466	13,678	9,927	7,391	7,291	5,929	2,336	9,722	129,084
May	10,141	8,302	2,448	2,013	11,727	8,066	17,145	14,431	4,339	3,577	6,133	5,618	1,589	10,814	106,343
June	5,588	4,575	2,265	1,735	7,671	4,991	14,757	13,093	2,220	1,686	5,265	4,087	1,259	8,182	77,374
July	3,071	2,524	2,842	2,166	7,189	5,117	14,087	11,926	1,967	1,528	6,314	4,396	1,333	6,707	71,167
August	1,329	1,004	3,623	2,457	10,562	6,345	17,382	12,631	3,280	2,045	7,523	4,217	2,063	6,631	81,092
September	743	550	6,968	4,306	20,460	12,128	20,953	16,308	9,283	5,555	8,856	4,544	3,268	7,962	121,884
October	990	875	11,556	7,154	50,722	31,176	25,795	18,086	26,465	16,637	9,455	5,120	6,715	14,830	225,576
November	835	566	6,152	4,078	34,179	23,833	11,353	8,789	18,628	14,549	3,664	2,469	4,525	14,482	148,102
December	578	448	1,799	1,175	12,377	9,095	3,413	2,793	7,167	6,563	894	1,050	2,029	8,377	57,758
Total	50,548	40,556	43,268	29,139	234,724	158,191	160,632	127,348	114,879	86,373	63,329	43,919	31,977	112,669	1,297,552

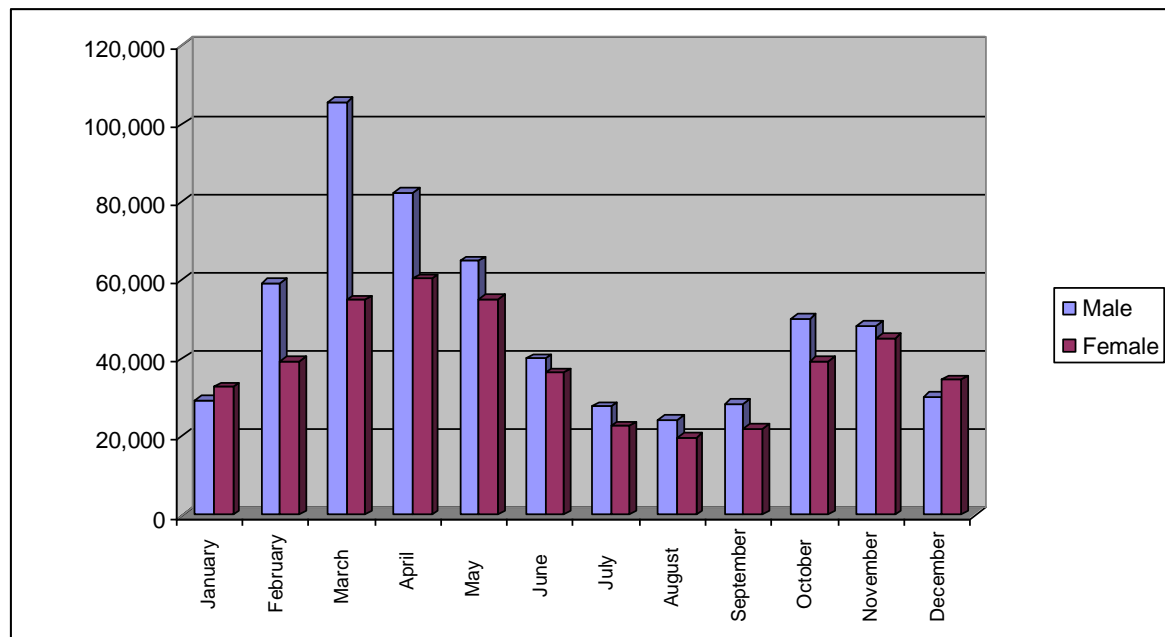
Age Profile of Mart Movements for Dairy Cattle by Month and by Gender

For the purposes of this table, Dairy Cattle are defined as the progeny of Bulls of a Dairy Breed

Month	0 - 6 weeks		6 wks - 6 Mts		6 - 12 Mts		12 - 18 Mts		18 - 24 Mts		24 - 30 Mts		30 Mts +		Total
	M	F	M	F	M	F	M	F	M	F	M	F	M	F	
January	2,787	94	669	37	2,430	105	544	31	1,356	640	164	294	274	5,588	15,013
February	20,332	440	576	21	3,010	162	2,180	87	1,608	1,029	858	937	388	7,853	39,481
March	27,419	847	1,089	88	3,295	198	7,820	435	1,806	748	2,661	2,095	571	9,069	58,141
April	15,093	1,068	2,255	142	1,526	219	7,137	1,272	1,081	470	2,437	2,492	391	10,259	45,842
May	6,942	994	2,526	246	854	127	5,782	930	534	171	1,417	1,435	270	8,097	30,325
June	2,770	519	1,622	138	674	44	5,621	408	566	57	1,101	612	239	4,545	18,916
July	1,299	285	1,533	204	577	23	5,359	620	744	120	1,454	496	327	4,034	17,075
August	574	108	1,003	84	1,231	63	4,109	233	2,654	117	1,029	360	608	3,749	15,922
September	621	81	537	73	1,922	54	2,510	169	5,704	261	585	253	839	4,074	17,683
October	1,489	79	457	87	4,080	188	2,332	167	11,288	652	613	257	1,196	6,822	29,707
November	1,537	56	322	40	4,234	134	1,233	114	7,193	1,065	379	236	892	8,546	25,981
December	1,354	47	256	30	1,914	66	469	63	2,964	902	119	159	275	5,404	14,022
Total	82,217	4,618	12,845	1,190	25,747	1,383	45,096	4,529	37,498	6,232	12,817	9,626	6,270	78,040	328,108

SECTION 2

Farm to Farm Movements by Month and by Gender



Month	Male		Female		Total
January	29,338		32,716		62,054
February	59,355		39,394		98,749
March	105,578		55,001		160,579
April	82,401		60,428		142,829
May	64,968		55,136		120,104
June	39,977		36,322		76,299
July	27,789		22,790		50,579
August	24,179		19,776		43,955
September	28,272		22,152		50,424
October	50,164		39,157		89,321
November	48,573		45,122		93,695
December	30,390		34,566		64,956
Total	590,984		462,560		1,053,544

Age Profile of Farm to Farm Movements for Beef Cattle by Month and by Gender

For the purposes of this table, Beef Cattle are defined as the progeny of Bulls of a Beef Breed

Month	0 - 6 weeks		6 wks - 6 Mts		6 - 12 Mts		12 - 18 Mts		18 - 24 Mts		24 - 30 Mts		30 Mts +		Total
	M	F	M	F	M	F	M	F	M	F	M	F	M	F	
January	1,433	1,155	1,055	800	8,223	7,317	1,523	1,210	2,885	3,145	317	558	854	4,738	35,213
February	5,185	4,644	991	779	8,987	7,346	1,969	1,633	3,093	3,405	419	661	888	4,147	44,147
March	13,191	11,758	1,033	1,058	11,261	7,974	5,266	3,854	4,110	3,140	1,447	1,324	1,099	4,818	71,333
April	13,398	12,386	1,538	1,487	8,640	6,658	8,878	6,731	3,195	2,526	2,299	2,322	1,444	5,506	77,008
May	11,245	10,990	2,667	2,820	5,579	3,829	10,190	7,251	1,979	1,571	2,287	2,614	1,224	5,825	70,071
June	5,733	5,629	3,142	3,032	3,636	2,400	7,856	6,187	918	736	1,333	1,830	891	4,382	47,705
July	2,662	2,507	2,799	2,442	2,863	1,582	6,686	3,620	643	434	1,182	1,299	678	2,558	31,955
August	1,174	1,044	2,942	2,437	3,231	1,991	6,299	3,711	975	496	961	1,137	607	2,319	29,324
September	807	687	3,176	2,665	5,016	3,223	6,593	3,388	2,250	1,164	1,022	1,143	752	2,551	34,437
October	1,015	1,001	4,108	2,946	12,440	8,676	6,336	4,227	5,602	3,534	1,236	1,161	1,284	4,410	57,976
November	1,254	916	2,821	2,262	13,126	9,989	3,890	3,014	5,958	4,907	918	1,059	1,676	6,163	57,953
December	937	899	1,262	1,039	8,176	6,841	2,183	1,769	4,112	3,565	421	656	900	5,286	38,046
Total	58,034	53,616	27,534	23,767	91,178	67,826	67,669	46,595	35,720	28,623	13,842	15,764	12,297	52,703	595,168

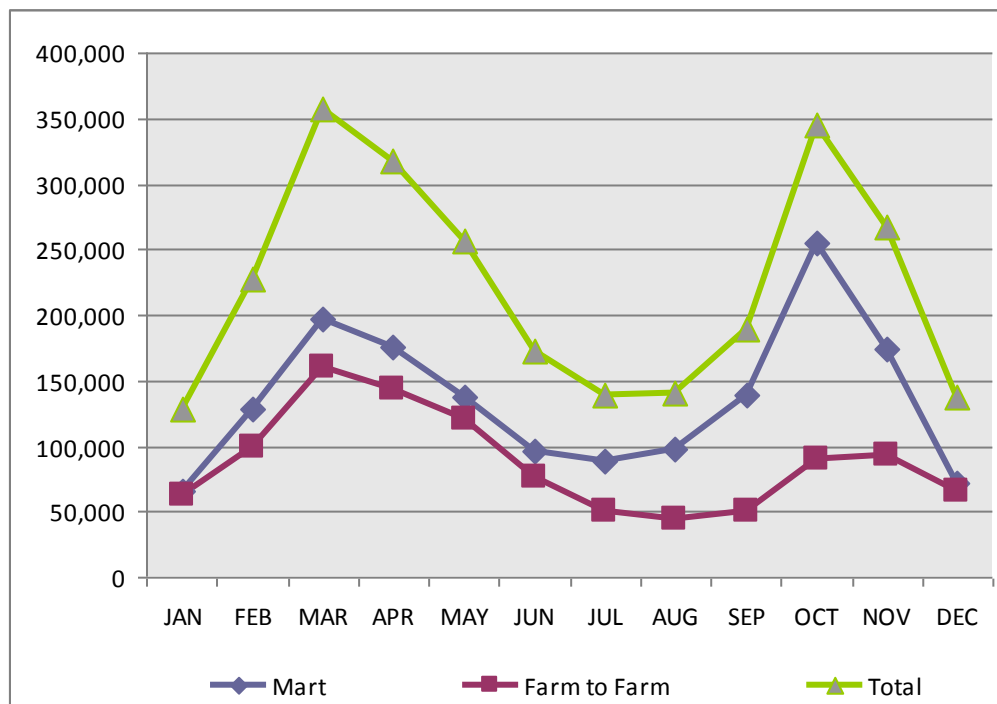
Age Profile of Farm to Farm Movements for Dairy Cattle by Month and by Gender

For the purposes of this Table, Dairy Cattle are defined as the progeny of Bulls of a Dairy Breed

Month	0 - 6 weeks		6 wks - 6 Mts		6 - 12 Mts		12 - 18 Mts		18 - 24 Mts		24 - 30 Mts		30 Mts +		Total
	M	F	M	F	M	F	M	F	M	F	M	F	M	F	
January	5,857	381	1,574	207	3,376	1,742	727	223	1,099	3,671	136	676	279	6,893	26,841
February	29,907	1,673	1,798	149	3,090	1,293	1,850	682	665	2,879	253	2,221	260	7,882	54,602
March	54,424	4,250	2,845	317	2,691	1,209	6,048	3,202	931	1,196	980	2,941	252	7,960	89,246
April	25,724	3,361	5,489	1,018	1,776	973	7,756	4,549	649	797	1,291	2,865	324	9,249	65,821
May	12,591	2,502	7,896	2,702	1,485	746	6,282	4,256	417	429	791	2,125	335	7,476	50,033
June	4,680	990	6,376	2,074	827	430	3,489	2,631	320	175	564	1,029	212	4,797	28,594
July	1,938	435	3,900	1,457	819	299	2,684	1,736	375	292	395	853	165	3,276	18,624
August	647	169	2,262	910	1,691	813	1,732	1,287	1,192	349	194	555	272	2,558	14,631
September	1,434	212	1,177	477	2,493	1,225	1,154	694	1,903	920	164	367	331	3,436	15,987
October	6,405	314	1,037	339	4,688	2,315	1,343	567	3,980	3,591	205	478	485	5,598	31,345
November	6,503	317	790	188	5,821	2,879	984	544	4,260	5,243	172	481	400	7,160	35,742
December	3,987	251	740	114	3,771	2,827	735	387	2,821	3,868	105	349	240	6,715	26,910
Total	154,097	14,855	35,884	9,952	32,528	16,751	34,784	20,758	18,612	23,410	5,250	14,940	3,555	73,000	458,376

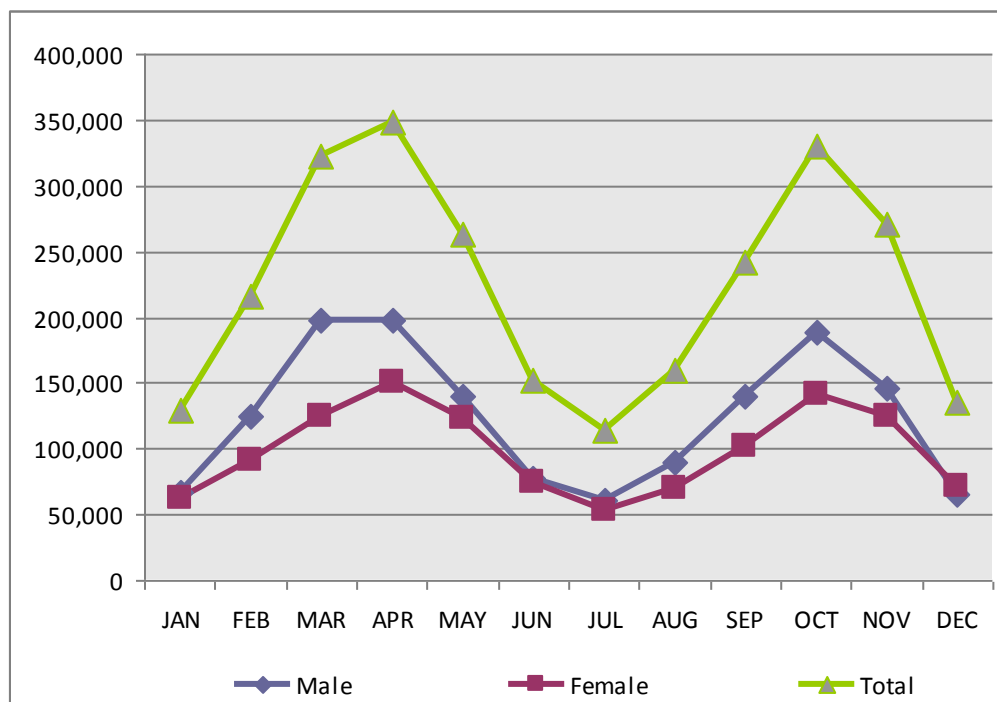
SECTION 3

All Cattle Movements by Month and by Type



Month	Mart	Farm to Farm	Total
January	66,399	62,054	128,453
February	128,758	98,749	227,507
March	196,650	160,579	357,229
April	174,926	142,829	317,755
May	136,668	120,104	256,772
June	96,290	76,299	172,589
July	88,242	50,579	138,821
August	97,014	43,955	140,969
September	139,567	50,424	189,991
October	255,283	89,321	344,604
November	174,083	93,695	267,778
December	71,780	64,956	136,736
Total	1,625,660	1,053,544	2,679,204

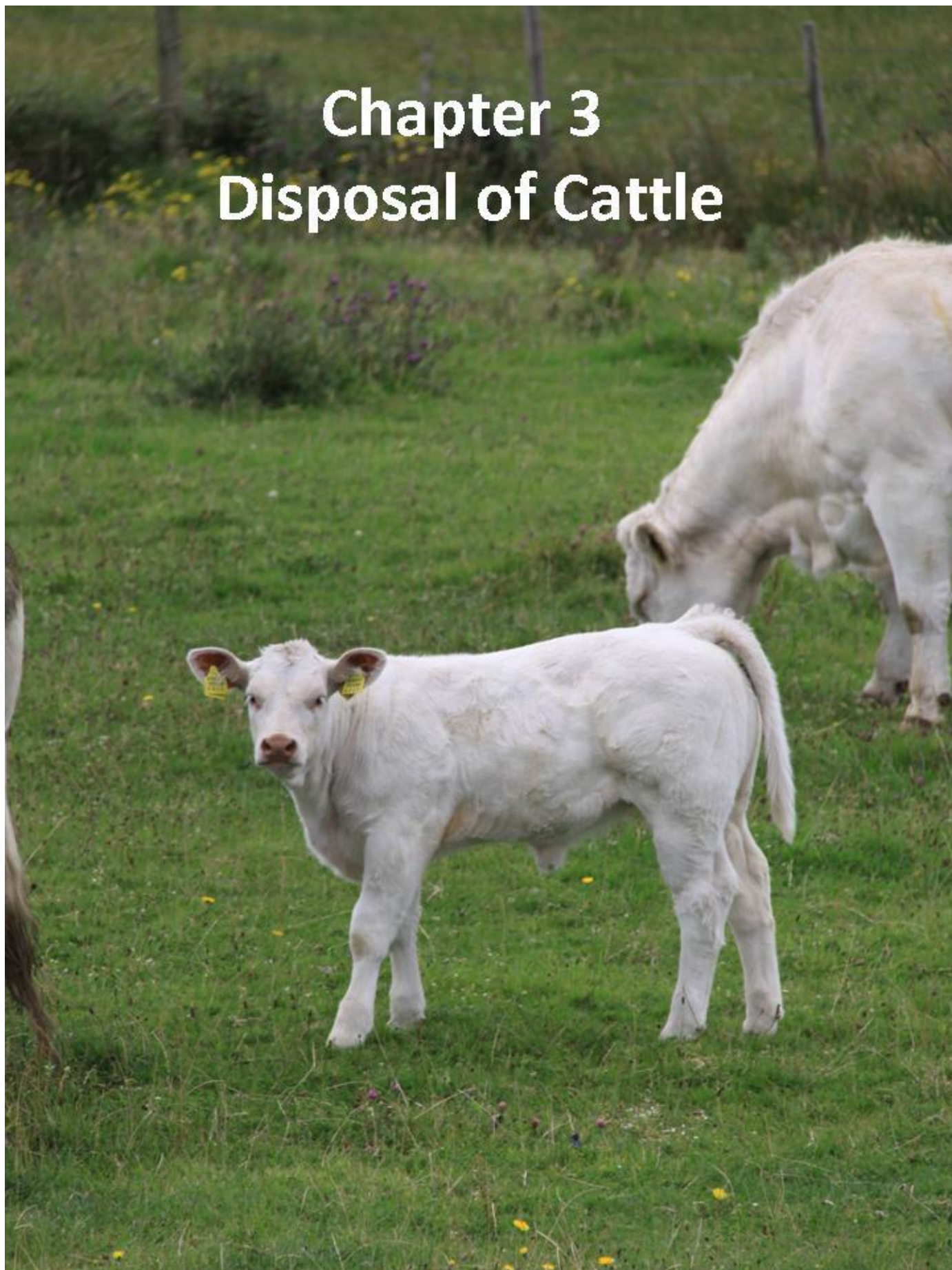
All Cattle Movements by Month and by Gender



Month	Male	Female	Total
January	63,579	64,874	128,453
February	133,154	94,353	227,507
March	225,711	131,518	357,229
April	180,408	137,347	317,755
May	136,815	119,957	256,772
June	91,595	80,994	172,589
July	75,885	62,936	138,821
August	81,149	59,820	140,969
September	111,521	78,470	189,991
October	203,317	141,287	344,604
November	143,699	124,079	267,778
December	65,998	70,738	136,736
Total	1,512,831	1,166,373	2,679,204

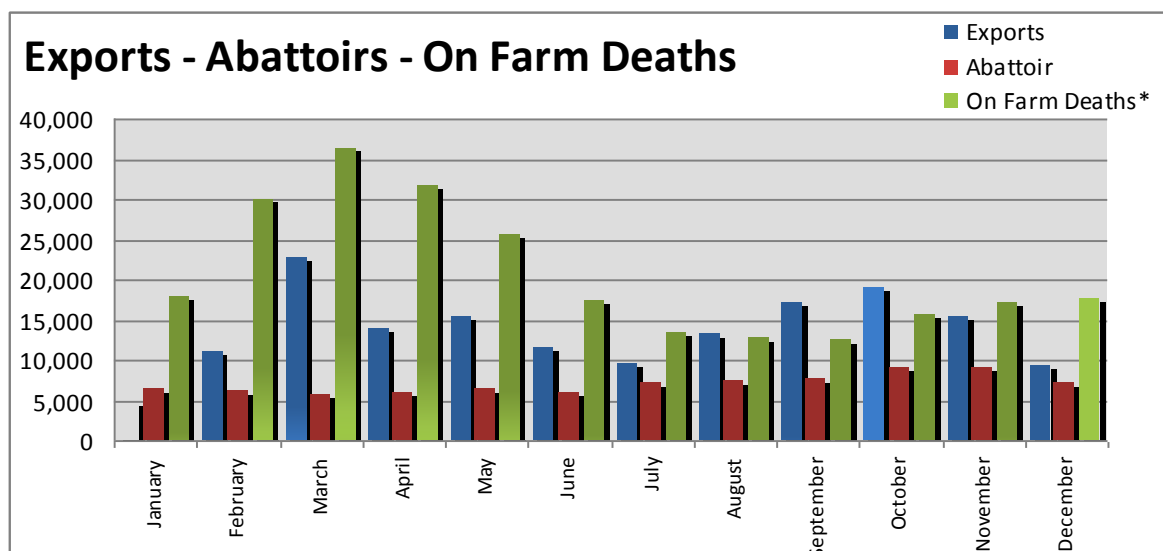
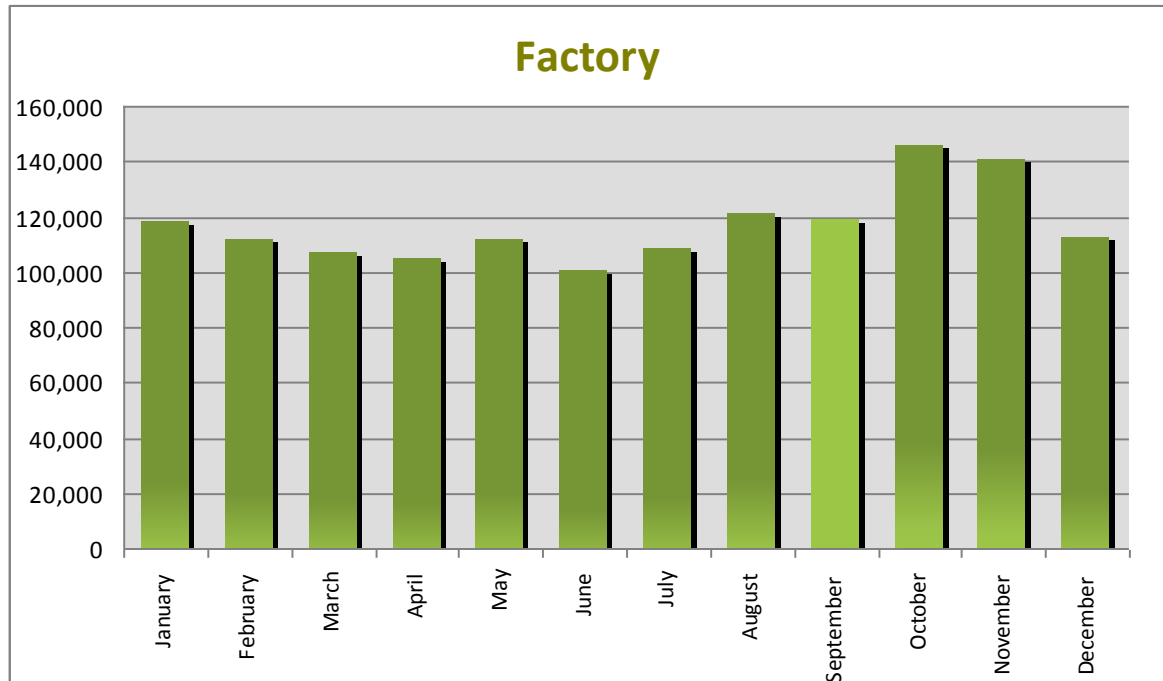
Chapter 3

Disposal of Cattle



SECTION 1

Overall Summary of Cattle Disposals and On Farm Deaths



* Including Stillborn Animals

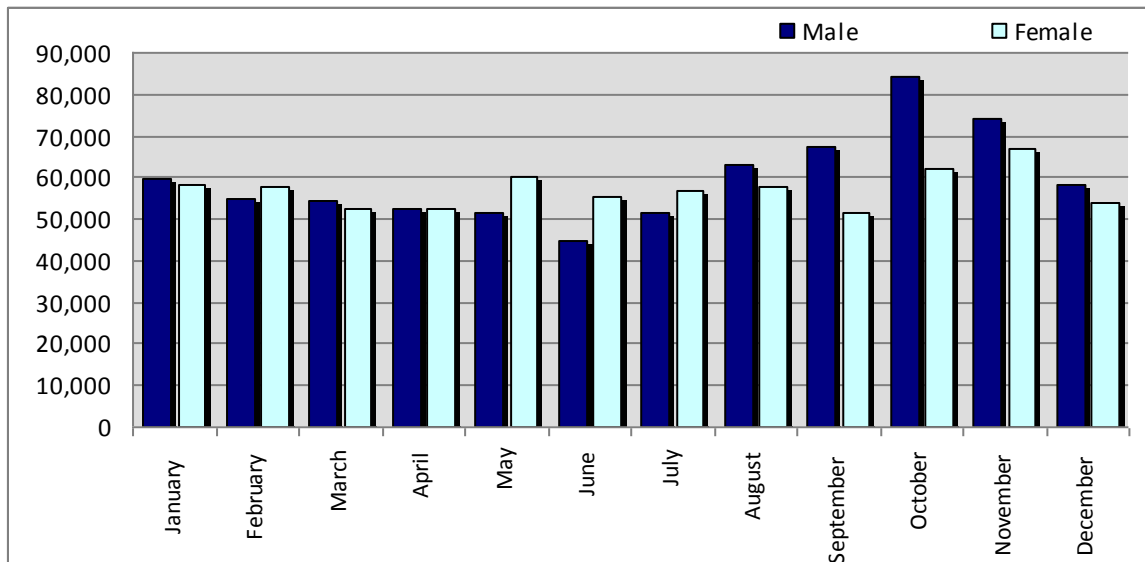
Overall Summary of Cattle Disposals and On Farm Deaths

Month	Factory	Exports	Abattoir	On Farm Deaths **	Stillborn	Total
January	117,888	4,647	6,249	13,393	4,414	146,591
February	112,187	10,870	6,111	20,581	9,369	159,118
March	106,707	22,577	5,640	28,781	7,501	171,206
April	104,871	13,848	5,814	27,031	4,728	156,292
May	111,510	15,290	6,444	23,328	2,345	158,917
June	100,337	11,524	5,732	16,387	1,001	134,981
July	108,407	9,476	7,152	12,874	547	138,456
August	120,746	13,089	7,370	12,180	608	153,993
September	118,996	17,052	7,445	11,623	856	155,972
October	146,042	19,113	9,060	14,583	947	189,745
November	140,945	15,296	8,956	16,079	965	182,241
December	112,222	9,256	7,081	16,366	1,253	146,178
Total	1,400,858	162,038	83,054	213,206	34,534	1,893,690

** Excluding Stillborn Animals

SECTION 2

Cattle Disposals in Department approved Slaughter Plants by Month and by Gender



Month	Male		Female		Total
January	59,764		58,124		117,888
February	54,647		57,540		112,187
March	54,343		52,364		106,707
April	52,225		52,646		104,871
May	51,364		60,146		111,510
June	44,916		55,421		100,337
July	51,530		56,877		108,407
August	63,232		57,514		120,746
September	67,535		51,461		118,996
October	84,030		62,012		146,042
November	73,995		66,950		140,945
December	58,164		54,058		112,222
Total	715,745		685,113		1,400,858

Age Profile of Slaughtering in Department approved plants for Beef Cattle by Month and by Gender

For the purposes of this Table, Beef Cattle are defined as the progeny of bulls of a Beef Breed

Month	0 - 12 Mts		12 - 18 Mts		18 - 24 Mts		24 - 30 Mts		30 - 48 Mts		48 Mts +		Total
	M	F	M	F	M	F	M	F	M	F	M	F	
January	208	108	1,921	886	25,219	21,606	4,174	3,981	13,373	6,790	576	8,993	87,835
February	203	127	1,908	786	22,408	19,424	5,457	5,443	9,918	5,417	592	8,139	79,822
March	219	124	2,274	758	19,882	15,165	9,495	8,494	8,786	4,572	514	6,767	77,050
April	196	124	3,680	1,030	13,947	10,053	13,575	12,024	7,769	4,148	779	7,466	74,791
May	215	80	6,463	1,425	9,529	5,710	15,046	15,415	6,422	4,105	926	10,566	75,902
June	189	88	6,833	1,500	5,488	3,490	14,325	15,364	6,141	3,703	974	11,346	69,441
July	138	58	5,621	1,454	4,295	3,096	21,161	17,129	8,193	3,842	1,267	11,222	77,476
August	181	107	6,120	2,229	5,121	3,998	27,391	17,139	10,613	4,376	1,320	11,472	90,067
September	166	130	4,602	2,240	6,272	5,017	26,605	13,524	14,775	5,332	1,256	10,406	90,325
October	179	142	3,727	2,229	11,396	8,710	23,843	10,634	25,241	7,938	1,432	14,828	110,299
November	214	157	2,744	1,610	17,393	13,764	10,989	6,580	21,719	9,341	1,264	16,438	102,213
December	193	117	2,194	1,102	19,504	15,460	4,814	3,832	13,876	7,457	914	11,919	81,382
Total	2,301	1,362	48,087	17,249	160,454	125,493	176,875	129,559	146,826	67,021	11,814	129,562	1,016,603

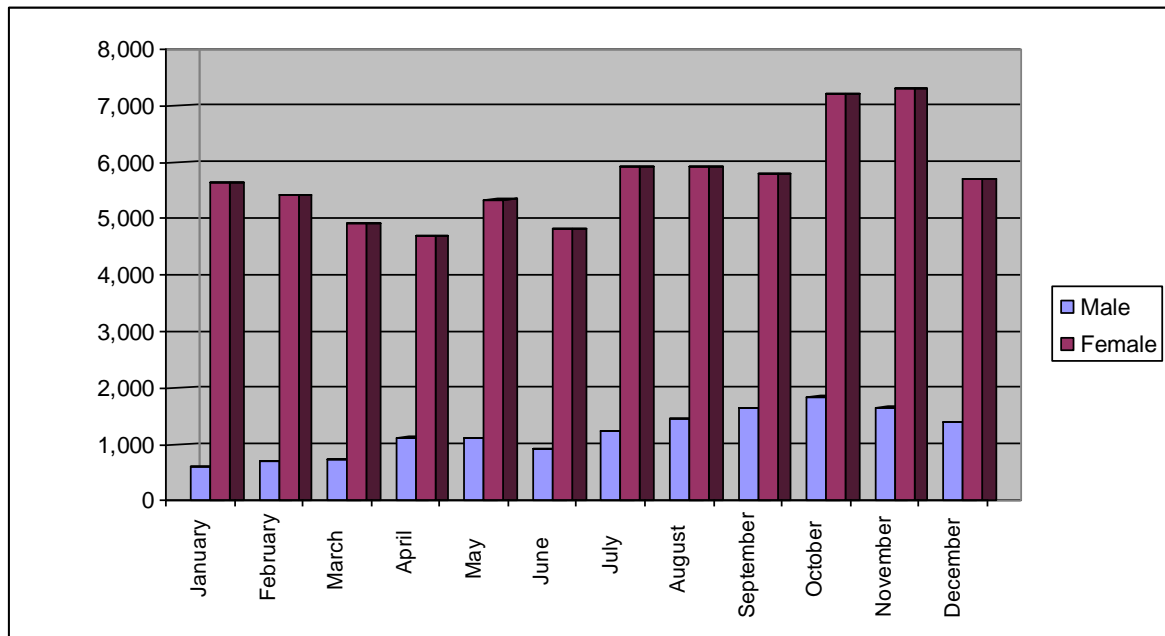
Age Profile of Slaughterings in Department approved plants for Dairy Cattle by Month and by Gender

For the purposes of this Table, Dairy Cattle are defined as the progeny of Bulls of a Dairy Breed

Month	0 - 12 Mts		12 - 18 Mts		18 - 24 Mts		24 - 30 Mts		30 - 48 Mts		48 Mts +		Total
	M	F	M	F	M	F	M	F	M	F	M	F	
January	120	28	213	16	8,859	779	1,482	230	3,533	2,613	86	12,094	30,053
February	324	14	355	25	6,574	584	4,142	668	2,668	2,478	98	14,435	32,365
March	256	36	413	44	3,574	328	6,617	991	2,176	2,024	137	13,061	29,657
April	111	12	760	40	2,233	200	7,242	1,127	1,834	2,099	99	14,323	30,080
May	186	9	1,842	68	2,189	111	6,726	1,410	1,678	2,438	142	18,809	35,608
June	296	0	2,650	82	1,779	67	4,567	1,249	1,533	2,063	141	16,469	30,896
July	296	7	1,946	93	1,378	86	5,070	1,294	2,020	2,328	145	16,268	30,931
August	311	8	1,101	83	2,202	131	4,648	861	4,061	2,653	163	14,457	30,679
September	202	15	680	51	4,198	188	2,734	533	5,885	2,542	160	11,483	28,671
October	233	27	385	43	6,051	337	2,342	369	9,047	3,199	154	13,556	35,743
November	168	20	311	41	10,693	621	1,644	274	6,736	3,326	120	14,778	38,732
December	191	53	353	33	10,965	596	1,234	215	3,825	2,472	101	10,802	30,840
Total	2,694	229	11,009	619	60,695	4,028	48,448	9,221	44,996	30,235	1,546	170,535	384,255

SECTION 3

Cattle Disposals in Local Authority approved Slaughter Plants by Month and by Gender



Month	Male		Female		Total
January	611		5,638		6,249
February	697		5,414		6,111
March	733		4,907		5,640
April	1,125		4,689		5,814
May	1,108		5,336		6,444
June	911		4,821		5,732
July	1,228		5,924		7,152
August	1,445		5,925		7,370
September	1,652		5,793		7,445
October	1,844		7,216		9,060
November	1,659		7,297		8,956
December	1,387		5,694		7,081
Total	14,400		68,654		83,054

Age Profile of Slaughterings in Local Authority approved Slaughter Plants for Beef Cattle by Month and by Gender

For the purposes of this Table, Beef Cattle are defined as the progeny of bulls of a Beef Breed

Month	0 - 12 Mts		12 - 18 Mts		18 - 24 Mts		24 - 30 Mts		30 - 48 Mts		48 Mts +		Total
	M	F	M	F	M	F	M	F	M	F	M	F	
January	44	204	42	382	259	3,522	38	423	140	631	4	162	5,851
February	45	191	31	358	240	3,023	96	549	152	554	11	268	5,518
March	52	158	129	445	222	2,350	115	1,018	96	394	3	221	5,203
April	54	132	209	613	260	1,606	258	1,459	95	333	4	164	5,187
May	33	172	251	946	188	1,092	387	2,022	94	355	3	247	5,790
June	44	137	188	1,001	111	623	291	2,018	130	340	11	304	5,198
July	43	235	245	1,417	100	669	489	2,324	191	353	8	327	6,401
August	34	356	196	1,478	150	753	595	1,913	292	454	15	211	6,447
September	30	316	206	1,316	194	1,184	604	1,366	373	433	21	228	6,271
October	59	432	150	1,140	272	2,379	511	1,254	592	799	34	367	7,989
November	67	336	102	757	381	3,072	267	672	564	890	24	463	7,595
December	52	194	92	453	378	2,854	147	392	504	708	15	326	6,115
Total	557	2,863	1,841	10,306	2,755	23,127	3,798	15,410	3,223	6,244	153	3,288	73,565

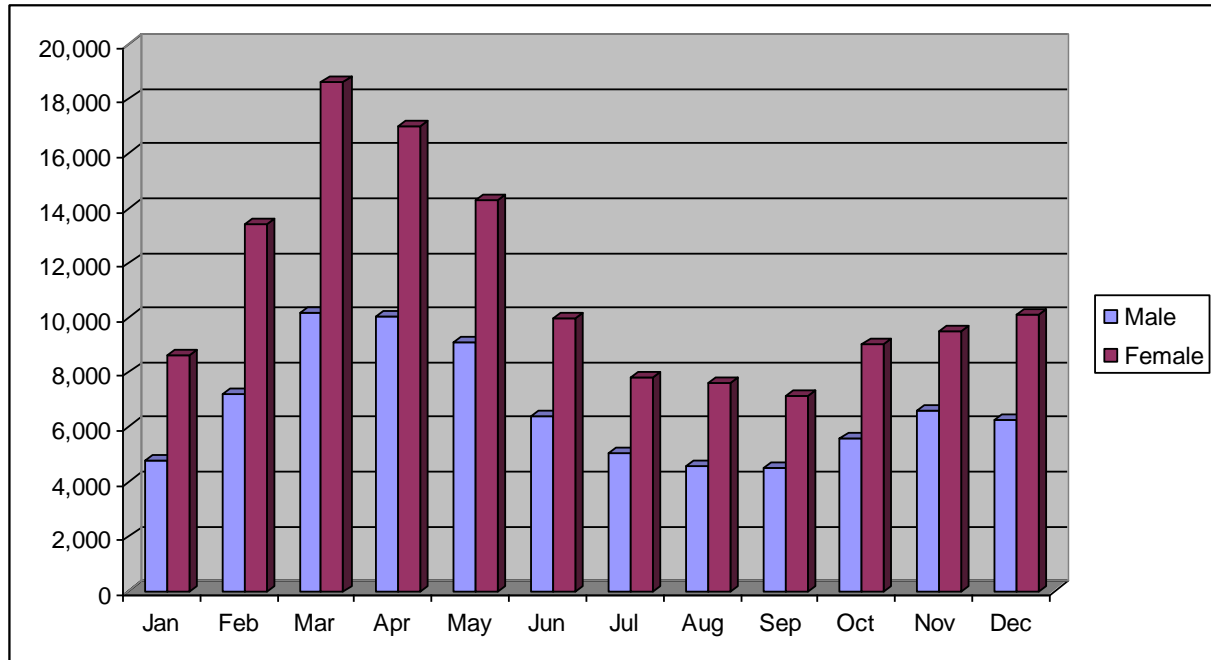
Age Profile of Slaughterings in Local Authority approved Slaughter Plants for Dairy Cattle by Month and by Gender

For the purposes of this Table, Dairy Cattle are defined as the progeny of bulls of a Dairy Breed

Month	0 - 12 Mts		12 - 18 Mts		18 - 24 Mts		24 - 30 Mts		30 - 48 Mts		48 Mts +		Total
	M	F	M	F	M	F	M	F	M	F	M	F	
January	19	2	4	5	42	101	9	16	10	82	0	108	398
February	9	1	10	3	50	69	24	48	28	94	1	256	593
March	10	1	11	7	20	41	51	70	24	70	0	130	435
April	8	1	52	14	35	32	132	90	17	67	1	178	627
May	0	3	54	19	13	18	77	116	6	52	2	294	654
June	3	0	70	9	11	12	25	82	26	68	1	227	534
July	3	0	61	23	10	7	52	75	26	89	0	405	751
August	4	1	33	19	31	16	37	51	58	122	0	551	923
September	3	1	41	5	89	18	40	30	51	125	0	771	1,174
October	8	3	7	7	109	69	16	28	82	128	4	610	1,071
November	8	4	9	7	167	69	21	11	47	142	2	874	1,361
December	8	1	8	6	142	77	10	6	31	83	0	596	968
Total	83	18	360	124	719	529	494	623	406	1,122	11	5,000	9,489

SECTION 4

On Farm Deaths * by Month and by Gender



	Male		Female		Total
January	4,783		8,610		13,393
February	7,178		13,403		20,581
March	10,192		18,589		28,781
April	10,025		17,006		27,031
May	9,068		14,260		23,328
June	6,408		9,979		16,387
July	5,056		7,818		12,874
August	4,590		7,590		12,180
September	4,508		7,115		11,623
October	5,575		9,008		14,583
November	6,609		9,470		16,079
December	6,270		10,096		16,366
Total	80,262		132,944		213,206

* Excludes stillborn animals

Age Profile of On Farm Deaths for Male Beef Cattle by Month

For the purposes of this Table, Beef Cattle are defined as the progeny of bulls of a Beef Breed

Month	0 - 6 wks	6 wks - 6 Mts	6 - 12 Mts	12 - 18 Mts	18 - 24 Mts	24 - 30 Mts	30 - 48 Mts	48 Mts +	Total
January	824	387	805	140	323	44	138	80	2,741
February	1,760	335	650	123	277	50	123	70	3,388
March	3,526	480	587	186	233	95	122	66	5,295
April	3,419	946	426	335	159	123	105	65	5,578
May	2,739	1,556	307	427	132	127	114	84	5,486
June	1,254	1,674	195	424	74	133	65	82	3,901
July	732	1,531	201	334	58	124	56	66	3,102
August	416	1,306	289	415	75	116	69	71	2,757
September	367	959	538	362	132	102	87	64	2,611
October	428	996	971	364	248	111	119	71	3,308
November	501	1,023	1,481	323	348	82	159	81	3,998
December	583	847	1,533	200	392	52	159	103	3,869
Total	16,549	12,040	7,983	3,633	2,451	1,159	1,316	903	46,034

Age Profile of On Farm Deaths for Female Beef Cattle by Month

For the purposes of this Table, Beef Cattle are defined as the progeny of bulls of a Beef Breed

Month	0 - 6 wks	6 wks - 6 Mts	6 - 12 Mts	12 - 18 Mts	18 - 24 Mts	24 - 30 Mts	30 - 48 Mts	48 Mts +	Total
January	609	296	523	71	239	58	389	1,567	3,752
February	1,430	292	456	97	259	97	462	2,273	5,366
March	2,683	414	438	156	286	166	611	3,617	8,371
April	2,868	785	278	267	235	216	526	3,292	8,467
May	2,163	1,245	231	315	167	257	470	2,812	7,660
June	1,011	1,312	140	347	100	248	341	1,936	5,435
July	500	1,124	144	327	71	229	230	1,652	4,277
August	346	1,013	209	335	85	193	258	1,551	3,990
September	249	775	389	304	144	208	288	1,365	3,722
October	347	781	822	305	268	171	378	1,804	4,876
November	394	700	1,033	243	287	135	403	1,737	4,932
December	499	629	1,046	179	301	80	438	2,081	5,253
Total	13,099	9,366	5,709	2,946	2,442	2,058	4,794	25,687	66,101

Age Profile of On Farm Deaths for Male Dairy Cattle by Month

For the purposes of this Table, Dairy Cattle are defined as the progeny of bulls of a Dairy Breed

Month	0 - 6 wks	6 wks - 6 Mts	6 - 12 Mts	12 - 18 Mts	18 - 24 Mts	24 - 30 Mts	30 - 48 Mts	48 Mts +	Total
January	795	399	529	90	148	27	43	11	2,042
February	2,724	369	317	180	93	52	41	14	3,790
March	3,345	809	266	254	61	102	53	7	4,897
April	2,076	1,720	188	283	40	79	52	9	4,447
May	1,167	1,809	184	258	47	71	36	10	3,582
June	374	1,627	142	237	36	54	28	9	2,507
July	199	1,283	182	191	34	30	26	9	1,954
August	122	942	431	187	85	28	34	4	1,833
September	209	577	781	127	128	25	41	9	1,897
October	366	427	1,095	113	184	24	55	3	2,267
November	412	352	1,337	150	268	29	58	5	2,611
December	382	321	1,217	149	259	25	40	8	2,401
Total	12,171	10,635	6,669	2,219	1,383	546	507	98	34,228

Age Profile of On Farm Deaths for Female Dairy Cattle by Month

For the purposes of this Table, Dairy Cattle are defined as the progeny of bulls of a Dairy Breed

Month	0 - 6 wks	6 wks - 6 Mts	6 - 12 Mts	12 - 18 Mts	18 - 24 Mts	24 - 30 Mts	30 - 48 Mts	48 Mts +	Total
January	609	169	381	42	226	96	777	2,558	4,858
February	2,031	171	228	107	331	362	1,018	3,789	8,037
March	2,037	510	159	171	236	586	1,036	4,977	9,712
April	1,274	1,006	111	203	128	479	775	4,265	8,241
May	769	1,141	96	201	63	319	573	3,362	6,524
June	246	1,026	63	165	27	263	351	2,362	4,503
July	108	994	101	188	34	202	270	1,607	3,504
August	141	727	266	126	80	136	380	1,756	3,612
September	124	468	474	88	124	87	409	1,617	3,391
October	156	322	738	69	211	80	564	1,952	4,092
November	275	232	770	87	228	83	635	2,203	4,513
December	171	202	655	93	259	52	777	2,526	4,735
Total	7,941	6,968	4,042	1,540	1,947	2,745	7,565	32,974	65,722

SECTION 5

Stillborn Calves 2012 by Month and by Gender

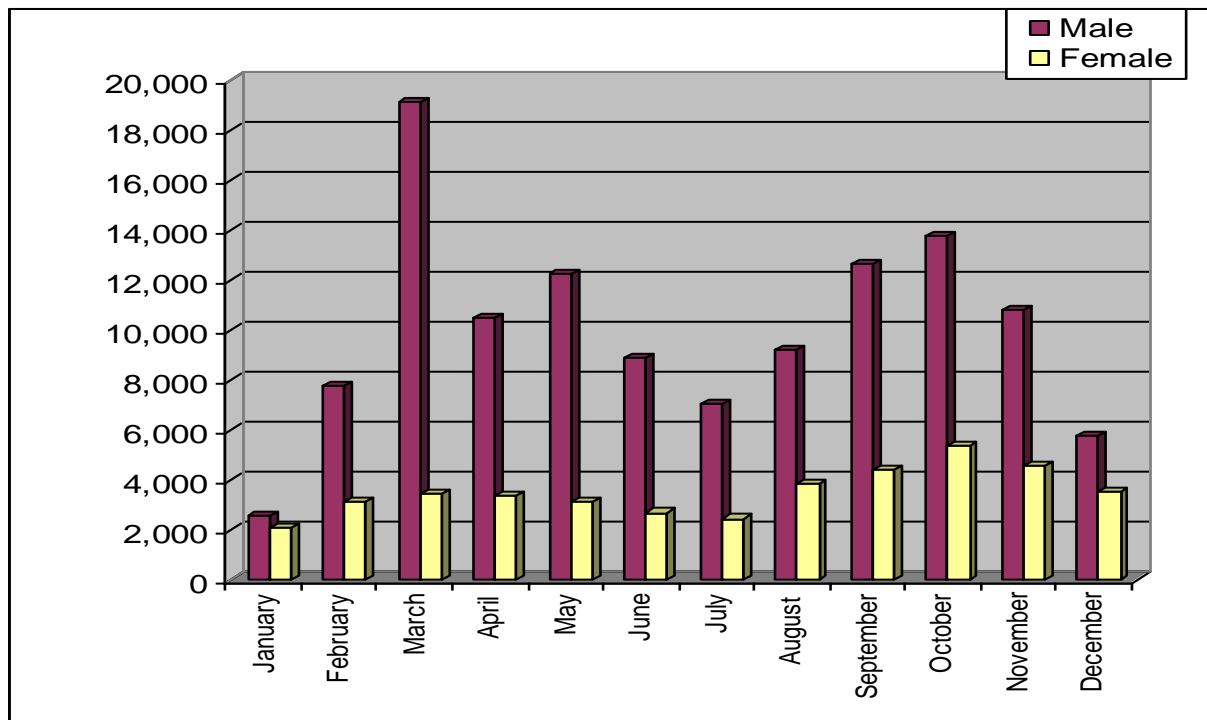
	Male	Female	Total
January	2,323	2,091	4,414
February	5,304	4,065	9,369
March	4,407	3,094	7,501
April	2,812	1,916	4,728
May	1,347	998	2,345
June	576	425	1,001
July	350	197	547
August	328	280	608
September	482	374	856
October	541	406	947
November	543	422	965
December	725	528	1,253
	19,738	14,796	34,534

Stillborn Calves 2012 by Month, Gender and Sire

	Calves Born to a Beef Bull				Calves Born to a Dairy Bull				Total
	Male	Female	Total		Male	Female	Total		
January	773	609	1,382		1,550	1,482	3,032		4,414
February	1,988	1,417	3,405		3,316	2,648	5,964		9,369
March	2,558	1,751	4,309		1,849	1,343	3,192		7,501
April	1,938	1,340	3,278		874	576	1,450		4,728
May	1,020	747	1,767		327	251	578		2,345
June	454	344	798		122	81	203		1,001
July	279	163	442		71	34	105		547
August	236	176	412		92	104	196		608
September	291	185	476		191	189	380		856
October	290	195	485		251	211	462		947
November	288	192	480		255	230	485		965
December	331	242	573		394	286	680		1,253
	10,446	7,361	17,807		9,292	7,435	16,727		34,534

SECTION 6

Live Exports by Month and by Gender



Month	Male		Female		Total
January	2,550		2,097		4,647
February	7,723		3,147		10,870
March	19,156		3,421		22,577
April	10,495		3,353		13,848
May	12,213		3,077		15,290
June	8,853		2,671		11,524
July	7,045		2,431		9,476
August	9,222		3,867		13,089
September	12,663		4,389		17,052
October	13,772		5,341		19,113
November	10,769		4,527		15,296
December	5,740		3,516		9,256
Total	120,201		41,837		162,038

Age Profile of Live Exports for Beef Cattle by Month and by Gender

For the purpose of this Table, Beef Cattle are defined as the progeny of bulls of a Beef Breed

Month	0 - 6 weeks		6 wks - 6 Mts		6 - 12 Mts		12 - 18 Mts		18 - 24 Mts		24 - 30 Mts		30 Mts +		Total
	M	F	M	F	M	F	M	F	M	F	M	F	M	F	
January	0	0	5	7	1,123	189	241	95	416	291	130	59	386	307	3,249
February	9	2	30	6	2,800	422	529	173	828	714	147	159	374	419	6,612
March	135	16	35	43	1,876	357	591	204	925	679	448	353	375	356	6,393
April	94	63	35	9	1,113	318	987	523	648	502	618	367	395	424	6,096
May	204	79	80	89	1,531	165	1,755	367	299	267	670	508	368	449	6,831
June	168	133	85	84	1,703	160	1,932	436	161	106	519	372	283	421	6,563
July	41	15	52	9	1,909	275	1,374	477	172	90	816	320	260	405	6,215
August	8	10	54	11	3,117	334	2,220	537	438	232	1,562	697	537	579	10,336
September	0	1	187	39	5,076	654	2,291	802	744	467	1,834	719	871	674	14,359
October	2	1	184	26	5,696	753	1,353	685	1,403	672	1,812	519	1,375	850	15,331
November	11	6	150	19	4,120	621	633	383	1,124	570	791	287	1,208	952	10,875
December	1	0	38	5	2,209	373	272	181	489	551	221	165	607	688	5,800
Total	673	326	935	347	32,273	4,621	14,178	4,863	7,647	5,141	9,568	4,525	7,039	6,524	98,660

Age Profile of Live Exports for Dairy Cattle by Month and by Gender

For the purpose of this Table, Dairy Cattle are defined as the progeny of bulls of a Dairy Breed

Month	0 - 6 weeks		6 wks - 6 Mts		6 - 12 Mts		12 - 18 Mts		18 - 24 Mts		24 - 30 Mts		30 Mts +		Total
	M	F	M	F	M	F	M	F	M	F	M	F	M	F	
January	2	0	0	0	5	0	14	7	129	469	22	219	77	454	1,398
February	2,607	16	32	0	2	5	6	5	207	265	63	371	89	590	4,258
March	13,794	38	186	2	1	103	20	325	151	94	499	427	120	424	16,184
April	5,748	23	301	9	1	30	31	307	112	79	323	250	89	449	7,752
May	6,009	109	665	24	1	9	30	53	88	29	381	315	132	614	8,459
June	2,785	80	533	36	68	5	85	44	108	4	322	242	101	548	4,961
July	1,159	39	372	30	2	1	236	44	181	19	360	204	111	503	3,261
August	105	0	38	1	2	2	147	214	314	276	360	263	320	711	2,753
September	96	0	57	11	158	7	82	65	568	125	241	174	458	651	2,693
October	460	0	17	6	93	102	39	123	694	639	235	180	409	785	3,782
November	1,103	10	24	5	64	1	43	81	815	426	165	164	518	1,002	4,421
December	947	4	55	0	18	4	49	36	496	799	134	80	204	630	3,456
Total	34,815	319	2,280	124	415	269	782	1,304	3,863	3,224	3,105	2,889	2,628	7,361	63,378

Destination of Live Exports

Country	Male	Female	Total
Northern Ireland	38,128	24,310	62,438
Italy	33,020	5,479	38,499
Spain	15,171	270	15,441
Netherlands	14,713	38	14,751
United Kingdom*	2,777	9,267	12,044
Belgium	8,560	57	8,617
Greece	2,629	10	2,639
Hungary	912	224	1,136
Slovenia	250	0	250
France	168	69	237
Romania	0	192	192
Germany	187	0	187
Portugal	18	91	109
Total EU	116,533	40,007	156,540
Country	Male	Female	Total
Morocco	2,323	12	2,335
Tunisia	1,298	1	1,299
Kazakhstan	47	1,001	1,048
Russian Federation	0	721	721
Kosovo (Serbia)	0	95	95
Total Non-EU	3,668	1,830	5,498
Total	120,201	41,837	162,038

* excluding Northern Ireland

Age Profile of Live Exports by Breed

Breed	0 - 6 weeks	6 wks - 6 Mts	6 - 12 Mts	12 - 18 Mts	18 - 24 Mts	24 - 30 Mts	30 Mts +	Total
FR	34,359	2,334	567	1,751	6,320	5,820	9,626	60,777
CH	29	400	9,845	5,759	5,253	5,127	3,987	30,400
LM	87	298	10,831	5,052	3,353	4,055	4,140	27,816
BB	159	286	13,201	5,896	1,321	790	843	22,496
Other	974	118	1,492	943	1,222	710	1,178	6,637
AA	255	60	555	753	1,031	1,559	1,521	5,734
HE	234	20	175	467	758	1,308	1,341	4,303
SI	36	170	912	506	617	718	916	3,875
Total	36,133	3,686	37,578	21,127	19,875	20,087	23,552	162,038

FR: Friesian
SI: Simmental

HE: Hereford
AA: Aberdeen Angus

CH: Charolais
BB: Belgian Blue

LM: Limousin

* For full list of breeds see Appendix

Destination of Live Exports by Age

Country	0 - 6 weeks	6 wks - 6 Mts	6 - 12 Mts	12 - 18 Mts	18 - 24 Mts	24 - 30 Mts	30 Mts +	Total
Northern Ireland	605	551	3,282	6,861	15,039	17,356	18,744	62,438
Italy	1,146	547	25,145	10,813	753	49	46	38,499
Spain	11,169	2,182	1,815	224	30	14	7	15,441
Netherlands	14,531	37	69	114	0	0	0	14,751
United Kingdom	31	127	465	1,463	2,813	2,519	4,626	12,044
Belgium	8,547	12	0	3	3	0	52	8,617
Greece	1	74	2,046	495	23	0	0	2,639
Hungary	0	7	744	197	148	31	9	1,136
Slovenia	0	58	190	2	0	0	0	250
France	103	12	29	19	38	17	19	237
Romania	0	0	1	29	114	27	21	192
Germany	0	4	145	37	1	0	0	187
Portugal	0	0	39	22	25	4	19	109
Total EU	36,133	3,611	33,970	20,279	18,987	20,017	23,543	156,540
Morocco	0	42	2,236	56	1	0	0	2,335
Tunisia	0	33	1,224	36	6	0	0	1,299
Kazakhstan	0	0	148	618	243	39	0	1,048
Russian Federation	0	0	0	120	578	21	2	721
Kosovo (Serbia)	0	0	0	18	60	10	7	95
Total Non-EU	0	75	3,608	848	888	70	9	5,498
Total	36,133	3,686	37,578	21,127	19,875	20,087	23,552	162,038

* excluding Northern Ireland

A photograph of three cows in a grassy field. In the foreground, a black cow is lying down, facing the camera. Behind it, a brown and white cow is standing. To the right, a white cow with grey speckles is standing and facing the camera. In the background, there is a dense forest of green trees, and a small house with a brown roof is visible on a hill. The sky is overcast.

Chapter 4

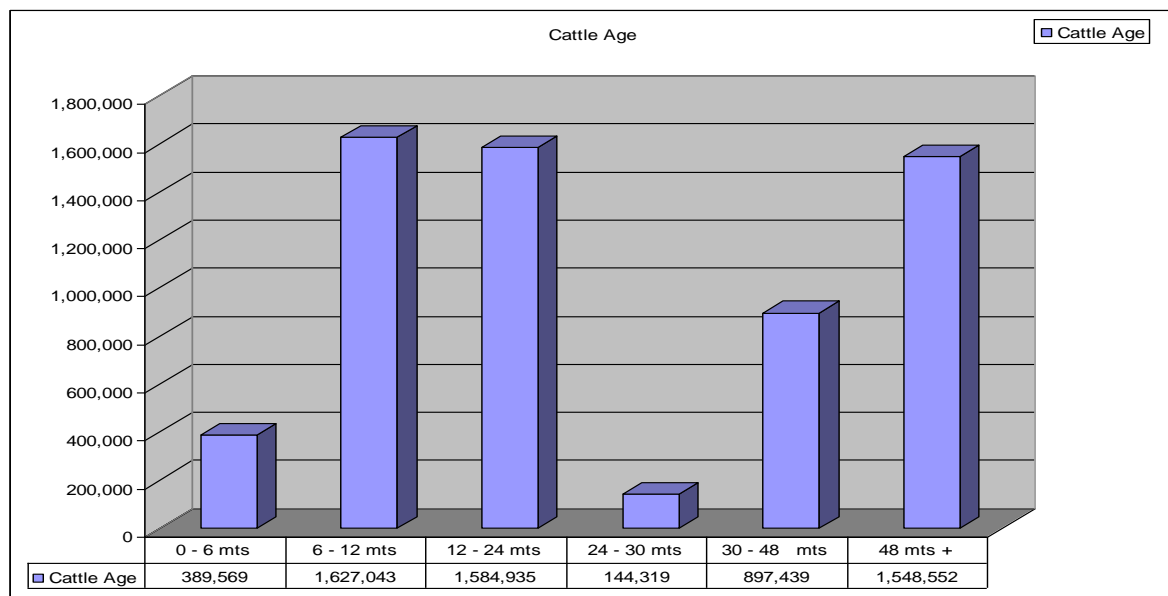
National Herd Data

SECTION 1

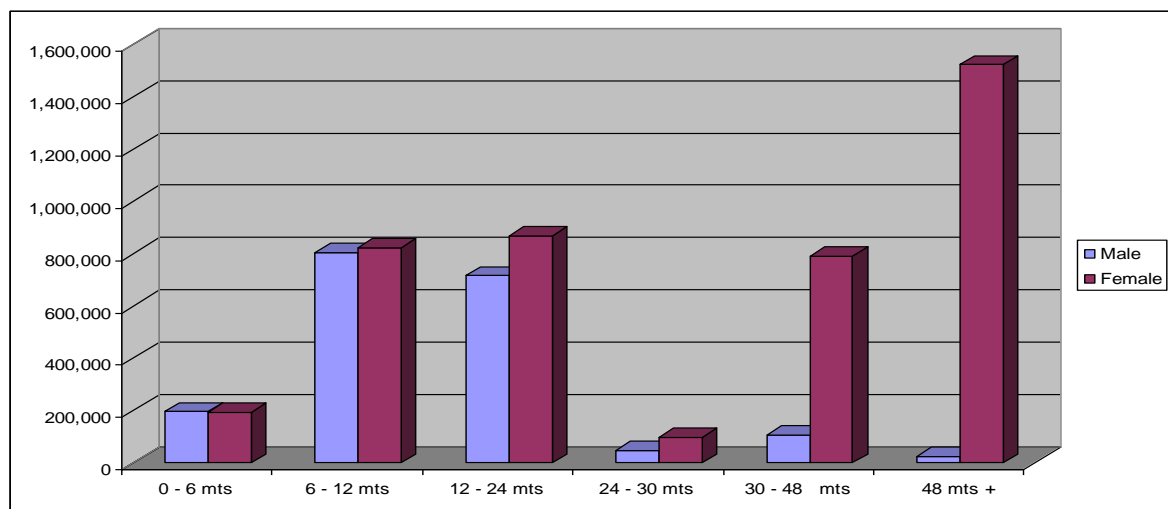
Age Profile of Live Herd at 31/12/2012 by Gender

	0 - 6 mts	6 - 12 mts	12 - 24 mts	24 - 30 mts	30 - 48 mts	48 mts +	Total
Male	195,644	805,632	715,060	48,283	106,188	26,064	1,896,871
Female	193,925	821,411	869,875	96,036	791,251	1,522,488	4,294,986
Total	389,569	1,627,043	1,584,935	144,319	897,439	1,548,552	6,191,857

Cattle Population by Age



Cattle Population by Age and Gender



SECTION 2

Age Profile of Live Herd at 31/12/2012 by County

County	0 - 6 mts	6 - 12 mts	12 - 24 mts	24 - 30 mts	30 - 48 mts	48 mts +	Total	% of Total
CARLOW	8,151	23,244	26,136	3,187	11,859	21,397	93,974	1.5
CAVAN	15,588	54,925	50,266	5,386	31,760	60,703	218,628	3.5
CLARE	18,212	68,074	51,461	4,561	35,668	79,464	257,440	4.2
CORK	44,543	249,436	226,065	16,473	152,742	239,789	929,048	15.0
DONEGAL	13,821	46,746	48,624	4,163	22,855	44,767	180,976	2.9
DUBLIN	1,960	5,100	6,208	906	2,765	4,930	21,869	0.4
GALWAY	26,451	102,445	95,687	8,897	52,438	101,729	387,647	6.3
KERRY	18,416	74,646	61,054	5,005	52,674	88,697	300,492	4.9
KILDARE	7,746	25,389	37,666	5,146	15,837	22,219	114,003	1.8
KILKENNY	15,634	89,697	86,771	5,458	42,182	67,704	307,446	5.0
LAOIS	15,661	58,564	67,826	6,638	28,769	47,031	224,489	3.6
LEITRIM	7,078	17,327	11,470	1,464	9,182	25,366	71,887	1.2
LIMERICK	15,434	96,292	85,489	5,662	56,094	89,888	348,859	5.6
LONGFORD	7,687	27,927	26,916	2,789	14,535	27,911	107,765	1.7
LOUTH	7,187	16,795	23,532	3,490	11,049	18,024	80,077	1.3
MAYO	16,415	65,871	55,795	5,518	34,138	72,700	250,437	4.0
MEATH	20,084	59,279	75,571	10,918	38,286	56,887	261,025	4.2
MONAGHAN	14,318	50,885	53,447	6,025	27,772	46,324	198,771	3.2
OFFALY	13,803	58,284	66,720	5,354	25,320	39,270	208,751	3.4
ROSCOMMON	13,358	48,021	46,512	4,596	23,966	48,604	185,057	3.0
SLIGO	7,922	26,354	21,687	2,333	14,176	30,986	103,458	1.7
TIPPERARY	24,997	163,919	158,461	9,010	80,784	126,104	563,275	9.1
WATERFORD	11,433	61,358	55,843	3,850	35,344	54,357	222,185	3.6
WESTMEATH	13,302	46,853	51,257	5,724	27,781	41,840	186,757	3.0
WEXFORD	18,692	65,336	67,435	7,114	33,990	61,831	254,398	4.1
WICKLOW	11,676	24,276	27,036	4,652	15,473	30,030	113,143	1.8
Total	389,569	1,627,043	1,584,935	144,319	897,439	1,548,552	6,191,857	

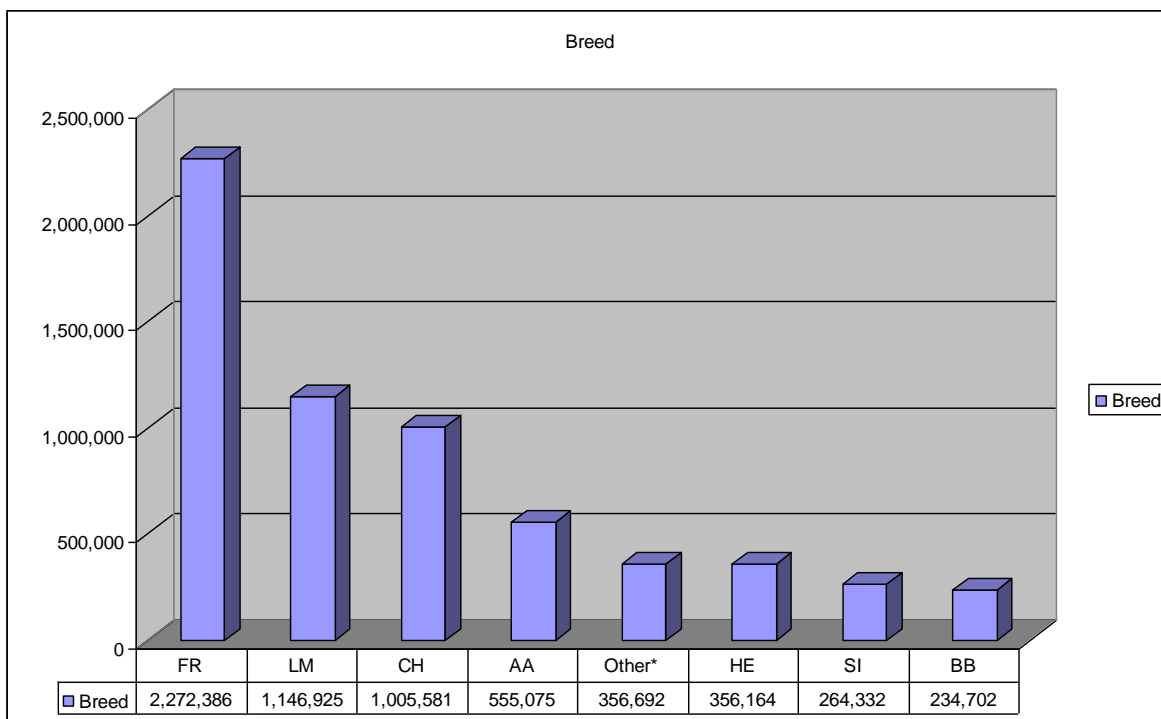
SECTION 3

Age Profile of Live Herd at 31/12/2012 by Breed

	0 - 6 mts	6 - 12 mts	12 - 24 mts	24 - 30 mts	30 mts +	48 mts +	Total	% of Total
AA	34,315	187,860	168,145	11,606	54,898	98,251	555,075	9.0
BB	22,719	71,006	68,186	6,490	22,976	43,325	234,702	3.8
CH	88,115	291,480	294,720	26,773	105,495	198,998	1,005,581	16.2
FR	80,607	539,893	508,722	43,815	438,402	660,947	2,272,386	36.7
HE	17,873	108,778	106,141	7,270	38,896	77,206	356,164	5.8
LM	109,945	292,327	303,284	34,232	140,306	266,831	1,146,925	18.5
Other*	19,556	83,666	81,145	7,649	59,901	104,775	356,692	5.8
SI	16,439	52,033	54,592	6,484	36,565	98,219	264,332	4.3
Total	389,569	1,627,043	1,584,935	144,319	897,439	1,548,552	6,191,857	

FR: Friesian LM: Limousin CH: Charolais
AA: Aberdeen Angus HE: Hereford SI: Simmental
BB: Belgian Blue

* For a full list of breed codes see Appendix



SECTION 4

Age Profile of Live Herd at 31/12/2012 by County and by Breed

County	FR	HE	CH	LM	SI	AA	BB	Other	Total
CARLOW	27,411	3,783	14,838	27,222	3,928	7,793	4,959	4,040	93,974
CAVAN	62,881	12,059	53,530	46,443	8,256	13,453	10,018	11,988	218,628
CLARE	49,982	17,617	56,481	86,352	8,358	11,539	12,042	15,069	257,440
CORK	556,428	57,199	48,711	64,826	26,696	102,410	13,459	59,319	929,048
DONEGAL	38,202	3,273	54,791	36,598	15,073	10,066	11,275	11,698	180,976
DUBLIN	5,926	1,442	4,441	3,878	1,494	1,979	1,144	1,565	21,869
GALWAY	52,647	24,148	93,499	123,550	20,881	31,660	22,750	18,512	387,647
KERRY	156,095	19,865	28,351	38,986	7,466	22,058	9,088	18,583	300,492
KILDARE	29,662	5,703	24,907	27,711	6,246	8,051	4,550	7,173	114,003
KILKENNY	142,750	16,596	36,498	50,538	13,044	28,721	6,903	12,396	307,446
LAOIS	74,560	11,112	35,634	51,121	11,103	17,686	9,795	13,478	224,489
LEITRIM	5,105	1,934	26,241	19,218	4,415	5,541	4,805	4,628	71,887
LIMERICK	186,708	32,177	21,953	38,135	6,419	35,633	7,356	20,478	348,859
LONGFORD	15,825	4,426	38,058	26,409	4,042	9,726	4,969	4,310	107,765
LOUTH	26,568	3,118	13,867	13,673	6,660	5,237	3,788	7,166	80,077
MAYO	31,070	7,559	66,029	64,405	17,496	33,814	16,175	13,889	250,437
MEATH	95,311	13,529	50,154	45,159	10,701	20,830	10,822	14,519	261,025
MONAGHAN	66,910	10,356	42,834	35,676	13,704	10,446	9,228	9,617	198,771
OFFALY	52,328	17,463	39,803	46,765	11,224	20,186	8,888	12,094	208,751
ROSCOMMON	12,051	5,569	61,795	51,875	11,785	21,188	13,017	7,777	185,057
SLIGO	13,719	2,476	26,733	23,889	7,571	13,848	7,740	7,482	103,458
TIPPERARY	270,097	44,858	54,639	78,283	17,926	50,480	12,767	34,225	563,275
WATERFORD	115,739	14,363	17,554	22,699	8,473	26,321	3,030	14,006	222,185
WESTMEATH	37,700	11,605	47,283	41,559	7,640	20,597	8,158	12,215	186,757
WEXFORD	110,838	8,879	27,169	54,391	8,497	18,917	12,530	13,177	254,398
WICKLOW	35,873	5,055	19,788	27,564	5,234	6,895	5,446	7,288	113,143
Totals	2,272,386	356,164	1,005,581	1,146,925	264,332	555,075	234,702	356,692	6,191,857

FR: Friesian LM: Limousin CH: Charolais
AA: Aberdeen Angus HE: Hereford SI: Simmental
BB: Belgian Blue

* For a full list of breed codes see Appendix

SECTION 5

Profile of Herd Size at 31/12/2012

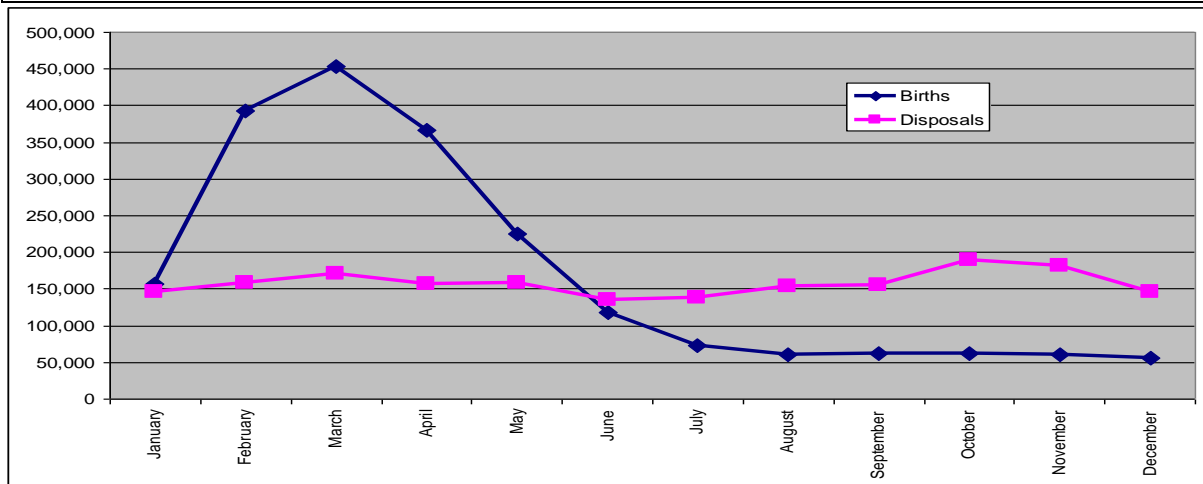
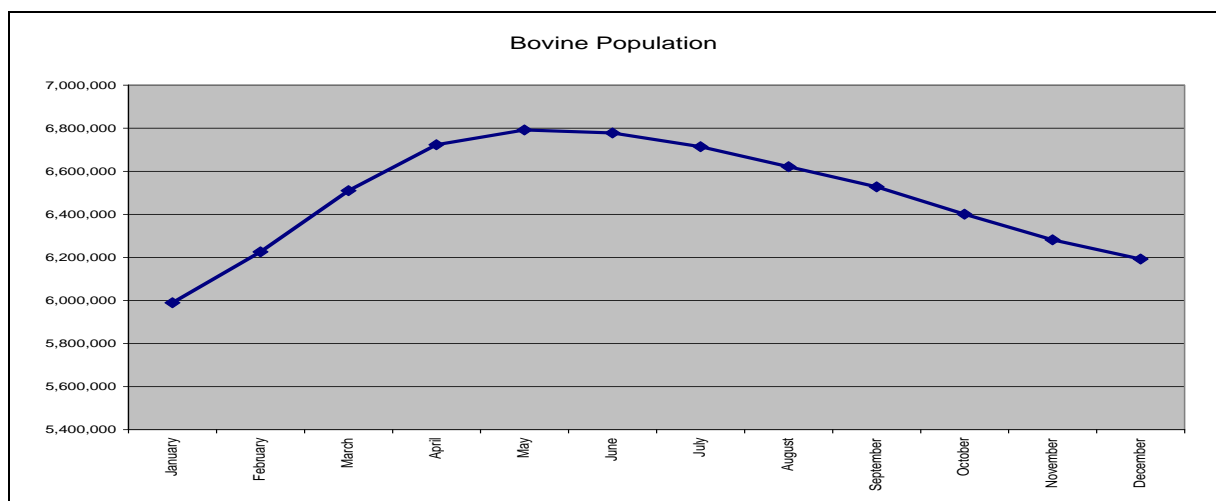
County				Analysis of Herd Size				
	Cattle	Herds	Average Herd Size	< 25	25 - 49	50 - 74	75 - 99	100+
CARLOW	93,974	1,247	75.4	332	256	199	141	319
CAVAN	218,628	4,607	47.5	1,894	1,183	614	372	544
CLARE	257,440	5,797	44.4	2,379	1,609	816	416	577
CORK	929,048	11,209	82.9	3,029	2,101	1,502	1,144	3,433
DONEGAL	180,976	5,172	35	3,204	975	405	210	378
DUBLIN	21,869	345	63.4	147	73	29	27	69
GALWAY	387,647	10,841	35.8	5,540	2,770	1,240	604	687
KERRY	300,492	6,232	48.2	2,881	1,363	729	432	827
KILDARE	114,003	1,655	68.9	610	333	184	153	375
KILKENNY	307,446	2,967	103.6	549	483	377	331	1,227
LAOIS	224,489	2,658	84.5	674	551	373	243	817
LEITRIM	71,887	2,883	24.9	1,887	664	198	68	66
LIMERICK	348,859	5,019	69.5	1,600	1,064	675	476	1,204
LONGFORD	107,765	2,273	47.4	911	630	311	179	242
LOUTH	80,077	1,103	72.6	410	202	134	100	257
MAYO	250,437	8,940	28	5,526	2,137	689	288	300
MEATH	261,025	3,288	79.4	1,062	693	423	266	844
MONAGHAN	198,771	4,016	49.5	1,595	1,010	560	316	535
OFFALY	208,751	2,931	71.2	844	624	437	313	713
ROSCOMMON	185,057	5,088	36.4	2,448	1,463	617	291	269
SLIGO	103,458	3,346	30.9	1,937	840	290	133	146
TIPPERARY	563,275	6,316	89.2	1,483	1,180	886	684	2,083
WATERFORD	222,185	2,102	105.7	445	318	240	239	860
WESTMEATH	186,757	2,857	65.4	937	660	423	243	594
WEXFORD	254,398	2,902	87.7	632	552	418	332	968
WICKLOW	113,143	1,514	74.7	475	344	177	147	371
Total	6,191,857	107,308	57.7	43,431	24,078	12,946	8,148	18,705

Imported Animals in the Live Herd at 31/12/2012

Country	Male	Female	Total
United Kingdom	9,558	4,698	14,256
France	235	2,420	2,655
Germany	2	1,811	1,813
Romania	687	1,006	1,693
Netherlands	7	471	478
Italy	6	220	226
Austria	2	220	222
Denmark	6	170	176
Norway	0	135	135
Lithuania	1	125	126
Sweden	0	70	70
Belgium	46	18	64
Switzerland	0	23	23
Canada	0	8	8
Czech Republic	0	1	1
Luxembourg	1	0	1
Total	10,551	11,396	21,947

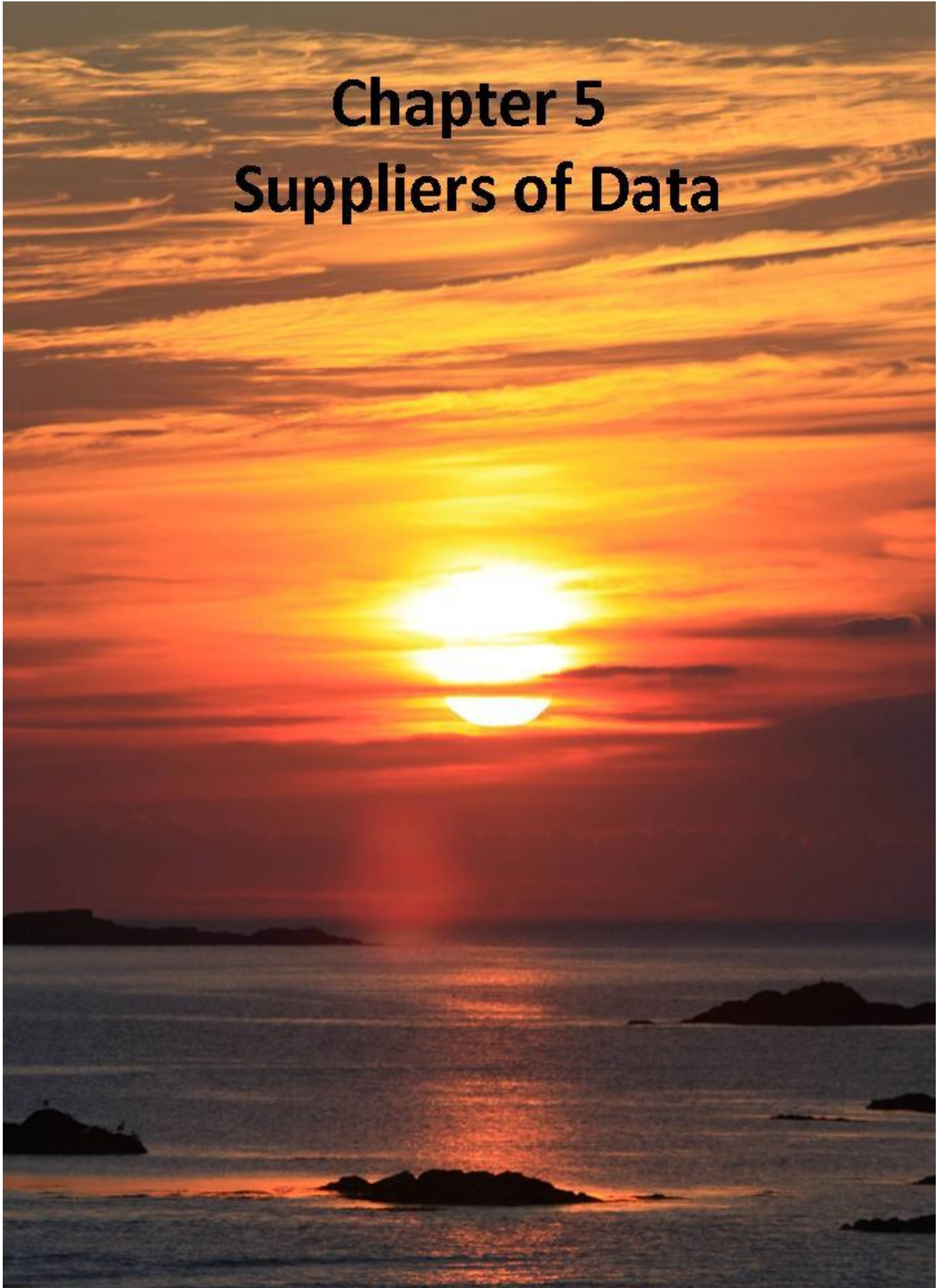
Bovine Population 2012

Bovine population	Population	Births	Imports	Disposals	Total	
Start Jan	5,976,531	156,162	2,840	146,591	5,988,942	End Jan
Start Feb	5,988,942	392,615	2,879	159,118	6,225,318	End Feb
Start Mar	6,225,318	453,034	2,716	171,206	6,509,862	End Mar
Start Apr	6,509,862	367,004	2,413	156,292	6,722,987	End Apr
Start May	6,722,987	225,613	2,185	158,917	6,791,868	End May
Start Jun	6,791,868	118,755	1,822	134,981	6,777,464	End Jun
Start Jul	6,777,464	73,453	1,387	138,456	6,713,848	End Jul
Start Aug	6,713,848	59,860	958	153,993	6,620,673	End Aug
Start Sep	6,620,673	61,362	1,134	155,972	6,527,197	End Sep
Start Oct	6,527,197	61,792	1,491	189,745	6,400,735	End Oct
Start Nov	6,400,735	60,683	2,207	182,241	6,281,384	End Nov
Start Dec	6,281,384	55,218	1,433	146,178	6,191,857	End Dec
Totals		2,085,551	23,465	1,893,690		



Chapter 5

Suppliers of Data



LIVESTOCK MARTS

1	Abbeyfeale Mart	30	Castleisland Mart	59	Kilrush Mart
2	Ardee Mart	31	Castlerea Mart	60	Kingscourt Mart
3	Athenry Mart	32	Cavan Mart	61	Listowel Mart
4	Balla Mart	33	Clifden Mart	62	Loughrea Mart
5	Ballina Mart	34	Clones Mart	63	Maam Cross Mart
6	Ballinakill Mart	35	Delvin Mart	64	Macroon Mart
7	Ballinrobe Mart	36	Dingle Mart	65	Manorhamilton Mart
8	Ballinasloe Mart	37	Donegal Mart	66	Milford Mart
9	Ballybay Mart	38	Dowra Mart	67	Milltown Mart
10	Ballybofey Mart	39	Dromcollogher Mart	68	Mohill Mart
11	Ballyjamesduff Mart	40	Drumshanbo Mart	69	Mountbellew Mart
12	Ballymahon Mart	41	Dungarvan Mart	70	Mountrath Mart
13	Ballymote Mart	42	Edenderry Mart	71	Nenagh Mart
14	Ballyshannon Mart	43	Elphin Mart	72	New Ross Mart
15	Baltinglass Mart	44	Ennis Mart	73	Newport Mart
16	Bandon Mart	45	Enniscorthy Mart	74	Portumna Mart
17	Birr Mart	46	Ennistymon Mart	75	Raphoe Mart
18	Blessington Mart	47	Fermoy Mart	76	Roscommon Mart
19	Borris Mart	48	Gort Mart	77	Roscrea Mart
20	Caherciveen Mart	49	Gortalea Mart	78	Scariff Mart
21	Cahir Mart	50	Granard Mart	79	Skibbereen Mart
22	Carlow Mart	51	Headford Mart	80	Sixmilebridge Mart
23	Carnaross Mart	52	Inishowen Mart	81	Templemore Mart
24	Carnew Mart	53	Kanturk Mart	82	Thurles Mart
25	Carrick-on-Shannon Mart	54	Kenmare Mart	83	Tipperary Mart
26	Carrick-on-Suir Mart	55	Kilcullen Mart	84	Tralee Mart
27	Carrigallen Mart	56	Kilfenora Mart	85	Tuam Mart
28	Cashel Mart	57	Kilkenny Mart	86	Tullamore Mart
29	Castleblaney Mart	58	Kilmallock Mart	87	Tullow Mart

LOCAL AUTHORITY ABATTOIRS

No	LOCAL AUTHORITY ABATTOIR	County	No	LOCAL AUTHORITY ABATTOIR	County
1	LAURENCE J MURPHY	CARLOW	50	CHARLES GALLAGHER	DONEGAL
2	CLONMORE MEATS LTD	CARLOW	51	SEAN ROONEY	DONEGAL
3	FERGAL HARFORD	CAVAN	52	THOMAS LYDON	GALWAY
4	PATRICK GAYNOR	CAVAN	53	JOHN JOE BRADY	GALWAY
5	LEONARD LYNCH	CAVAN	54	EDNA HAYES	GALWAY
6	THOMAS GAYNOR & SONS	CAVAN	55	BURKES MEATS (KINVARA) LTD	GALWAY
7	ANTHONY MCGURREN	CAVAN	56	JUSTIN FLANNERY	GALWAY
8	ROBERT RICHARDSON	CAVAN	57	SEAN FARRELL	GALWAY
9	JAMES SMITH	CAVAN	58	EUGENE MCENTEE	GALWAY
10	DONOGHUES FOODFARE LTD	CAVAN	59	HUGH O'DONNELL	GALWAY
11	MULLAGH MEATS LTD	CAVAN	60	TOM CONROY	GALWAY
12	KEVIN HEERY	CAVAN	61	JAMES P GIBNEY	KELLS
13	THOMAS ARGUE	CAVAN	62	JOHN BURKE	KERRY
14	JOHN DONNELLY	CAVAN	63	JOHN F ASHE	KERRY
15	JOSEPH KELLY	CLARE	64	MICHAEL SHEAHAN	KERRY
16	EDDIE JOYCE	CLARE	65	RICHARD BEHAN	KERRY
17	JOHN KELLY	CLARE	66	JAMES GERARD CURRAN	KERRY
18	DENIS CORCORAN	CLARE	67	SNEEM MEATS LTD	KERRY
19	SEAN HAUGH	CLARE	68	STEPHEN J CAHILLANE	KERRY
20	ENNIS ABBATTOIR LTD	CLARE	69	MICHAEL HOULIHAN	KERRY
21	JERRY NOLAN	CORK	70	PATRICK B MCDONNELL	KERRY
22	DAN MOLONEY	CORK	71	TIMOTHY C (TODD) HENNESSY	KERRY
23	EDDIE FITZGERALD	CORK	72	THOMAS KELLY	KERRY
24	JAMES & PATRICK J COLLINS	CORK	73	JAMES J WALSH	KERRY
25	LIAM O'DRISCOLL	CORK	74	ROGER O'SULLIVAN	KERRY
26	MICHAEL SPILLANE	CORK	75	WILLIAM C BURKE	KERRY
27	JOHN MCCARTHY	CORK	76	KIERAN BURNS	KERRY
28	JOHN FINN	CORK	77	MICHAEL O'SHEA	KERRY
29	TIMOTHY CONSIDINE	CORK	78	PASCAL GREANEY	KILDARE
30	MICHAEL BRESNAN	CORK	79	NIAL & JAMES O'GORMAN	KILDARE
31	PATRICK HEGARTY	CORK	80	JAMES NOLAN	KILDARE
32	CHRISTOPHER J& MARIA COLLINS	CORK	81	DEREK NOLAN	KILDARE
33	CRIOSTOIR CRUALAOI	CORK	82	NEIL TYNAN	KILKENNY
34	PATRICK O'DONOGHUE	CORK	83	GERRY O'BRIEN	KILKENNY
35	WILLIAM F MURPHY	CORK	84	PATRICK KENNA	KILKENNY
36	CORNELIUS CRONIN	CORK	85	JUNE PRENDERGAST	KILKENNY
37	MALACHY O'SULLIVAN	CORK	86	PIUS HENNESSY	LAOIS
38	MICHAEL J O'NEILL	CORK	87	KEVIN BRACKEN	LAOIS
39	MICHAEL O'KEEFFE	CORK	88	TOMAS KENNA	LAOIS
40	T G MCCARTHY & SON LTD	CORK	89	MICHAEL TYNAN	LAOIS
41	WILLIAM WALSH	CORK	90	JOHN CAHILL JNR	LAOIS
42	EDMOND CLIFFORD	CORK	91	P J DELANEY	LAOIS
43	DANIEL LORDAN	CORK	92	MICHAEL KEEGAN	LAOIS
44	TIM MURPHY	CORK	93	MICHAEL R DOWLING	LAOIS
45	RICHARD WALSH	DONEGAL	94	ANDREW SHIEL	LAOIS
46	ML MCGETTIGAN DONEGAL LTD	DONEGAL	95	JOHN O'MALLEY	LEITRIM
47	MARK ROBINSON	DONEGAL	96	DAMIEN THORNTON	LEITRIM
48	JONNIE KERR	DONEGAL	97	DOUGLAS G BOYD	LEITRIM
49	ANTHONY MCGETTIGAN	DONEGAL	98	THOMAS MCHUGH	LEITRIM

LOCAL AUTHORITY ABATTOIRS cont.

No	LOCAL AUTHORITY ABATTOIR	County	No	LOCAL AUTHORITY ABATTOIR	County
99	MARY ELLEN & HUGH LOGAN	LEITRIM	145	MICHAEL WEBB	ROSCOMMON
100	SEAN MCMORROW	LEITRIM	146	BENEDICT MORRIS	ROSCOMMON
101	PATRICK CREAMER	LIMERICK	147	BOYLE COUNTRY MEATS	ROSCOMMON
102	DENIS O'SULLIVAN	LIMERICK	148	OLIVER HARTE	ROSCOMMON
103	GAELIC MEAT & LSTOCK CO LTD	LIMERICK	149	CYRIL MC HUGH	ROSCOMMON
104	WILLIAM BARRY	LIMERICK	150	PADRAIG GILLIGAN	ROSCOMMON
105	MICHAEL O'ROURKE	LIMERICK	151	IGNATIUS GANNON	ROSCOMMON
106	DENIS GREANEY	LIMERICK	152	NOEL WYNNE	SLIGO
107	NICHOLAS P COOKE	LIMERICK	153	GERALD P BURNS	SLIGO
108	ASHGROVE WHOLESALE LTD	LIMERICK	154	CHARLES WILLIAMS	TIPPERARY
109	SEAN FITZGERALD	LIMERICK	155	EDWARD LACEY	TIPPERARY
110	EDMUND O'CONNOR	LIMERICK	156	THOMAS MYLES	TIPPERARY
111	RONALD RAWLE	LONGFORD	157	LIAM TREACY	TIPPERARY
112	SEAN CAMPBELL	LONGFORD	158	MARTIN O'DWYER	TIPPERARY
113	DESMOND SAVAGE	LOUTH	159	MICHAEL & MAURICE WHELAN	TIPPERARY
114	LIAM JENNINGS BUTCHERS LTD	MAYO	160	JOHN O'DWYER	TIPPERARY
115	SEAN F KELLY	MAYO	161	DAVID O'MALLEY	TIPPERARY
116	PHILIP GIBBONS	MAYO	162	WHELAN FOOD & MT PROC LTD	TIPPERARY
117	THOMAS PATRICK BYRNE	MAYO	163	ANDREW ENGLISH	TIPPERARY
118	JOHN MOORE	MAYO	164	JOHN HOGAN	TIPPERARY
119	EDWARD PHILLIPS	MAYO	165	WILLIAM G FITZGIBBON	TIPPERARY
120	GERARD & VAL MCGREAL	MAYO	166	WILLIAM GAHAN	TIPPERARY
121	TONY CAROLAN	MAYO	167	ROBERT C LEWIS	TIPPERARY
122	JAMES DUFFY	MAYO	168	JOSEPH HAMMERSLEY	TIPPERARY
123	SEAMUS HAWKSHAW	MAYO	169	TOM HALLINAN	TIPPERARY
124	ANTHONY HEFFERNAN	MAYO	170	PATRICK WALSH	TIPPERARY
125	MARTIN PAUL MALONEY	MAYO	171	KEVIN DALTON	TIPPERARY
126	JAMES MOLLOY	MAYO	172	ROBERT FLYNN	WATERFORD
127	PATRICK REILLY	MAYO	173	MICHAEL MCGRATH	WATERFORD
128	COOGAN MEATS LIMITED	MEATH	174	DONALD O'REILLY	WATERFORD
129	TRADITIONAL MEAT CO IRE LTD	MEATH	175	SEAN DUNNING	WESTMEATH
130	WILLIAM DONNELLY & SON LTD	MEATH	176	HUGH MURRAY	WESTMEATH
131	ARD NA RI MEATS LTD	MEATH	177	JOE TYNAN	WESTMEATH
132	MICHAEL & NIALL BROGAN	MEATH	178	PETER GILLIVAN	WESTMEATH
133	GERARD & MARTIN QUINN	MONAGHAN	179	DECLAN LENIHAN	WESTMEATH
134	JAMES SHORTT	MONAGHAN	180	MOATE MEATS LTD	WESTMEATH
135	HUGH & PATRICK J MAGUIRE	MONAGHAN	181	CAMILLUS CLEARY	WESTMEATH
136	JAMES DUFFY	MONAGHAN	182	PETER MCGUINNESS	WESTMEATH
137	DOMINIC FEELY	OFFALY	183	BERNARD TROY	WESTMEATH
138	MICHAEL HEALY	OFFALY	184	CANNON & COLE	WESTMEATH
139	WILLIAM BROWNE	OFFALY	185	CHRISTOPHER BYRNE	WEXFORD
140	PAUL BOYD	OFFALY	186	RICHARD DOYLE	WEXFORD
141	TERRY MCLOUGHLIN	ROSCOMMON	187	PATRICK MURPHY	WICKLOW
142	STANLEY TAYLOR	ROSCOMMON	188	MYLES DOYLE	WICKLOW
143	OLIVER MCCABE	ROSCOMMON	189	ANTHONY & PADRAIG FARRELLY	WICKLOW
144	JOSEPH REGAN	ROSCOMMON			

APPROVED EXPORT POINTS

Buitelaar Int Trading, Kildare	Fox's Lairage, Longford
Ballyjamesduff Mart, Cavan	Granard Mart, Longford
Dowra Mart, Cavan	Laragh Livestock, Louth
Kellehers, Cork	Ballina Mart, Mayo
Murphy-Hunter, Cork	Ballinrobe Mart, Mayo
Bandon Mart, Cork	Carnaross Mart, Meath
Ballybofey/Stranolar Mart, Donegal	O'Connell's Lairage, Meath
Donegal Mart, Donegal	Mallon's Lairage, Meath
Raphoe Mart, Donegal	Ballybay Mart, Monaghan
Inishowen Mart, Donegal	Castleblayney Mart, Monaghan
Lenehans, Dublin	Tullamore Mart, Offaly
Tuam Mart, Galway	Castlerea Mart, Roscommon
Ballinasloe Mart, Galway	Elphin Mart, Roscommon
Gort Mart, Galway	Roscommon Mart, Roscommon
Hallisseys, Kerry	Ballymote Mart, Sligo
Hennessy Calf Farm, Kilkenny	Nenagh Mart, Tipperary
Carrigallen Mart, Leitrim	Roscrea Mart, Tipperary
Drumshanbo Mart, Leitrim	Dungarvan Mart, Waterford
Manorhamilton Mart, Leitrim	TLT, Westmeath
Mohill Mart, Leitrim	Quinn's Lairage, Westmeath
Casey's Lairage, Limerick	Enniscorthy Mart, Wexford
Ballymahon Mart, Longford	Scallans, Wicklow

LICENSED KNACKERIES

Moyle Animal Collection Ltd, Carlow	John McGuinness, Longford
Laurence Buggy, Carlow	LKS Disposals, Louth
Colm Mulvaney, Cavan	Finbar & Kevin Donohue, Meath
Kevin Mulvaney, Cavan	Meath Hunt Club
James Lambe, Cavan	John O'Rourke, Meath
Vincent Coffey, Clare	Ward Union Hunt, Meath
Carbery Hunt Kennels, Cork	Oldcastle Laboratories, Meath
William Fitzgerald, Cork	John Costelloe, Offaly
Liam Duggan, Cork	Midland Animal Collection, Roscommon
Bartlemy Road Disposal Service, Cork	Moloney & Matthews, Mayo
James Barrett, Cork	Tipperary Foxhounds, Tipperary
Collins Brothers, Cork	Beechfield Products, Tipperary
Faculty of Veterinary Medicine, UCD, Dublin	Michael Duggan, Tipperary
John Greene, Galway	Richard Keane, Tipperary
Frank Madden, Galway	Golden Vale Hunt, Tipperary
Kildare Hunt Club, Kildare	Suir Vale Harriers, Tipperary
South Kilkenny Foxhounds	David Flanagan, Tipperary
Kilkenny Fallen Stock Service	Patrick Morrissey, Tipperary
Charlie Lawless, Laois	John Marsh, Tipperary
John Styles, Laois	Nicholas Hannigan, Waterford
Ward Waste Products, Limerick	K Guinness, Westmeath
Co Limerick Hunt Club	Larry Earle, Wexford

FACTORIES

AIBP, Bandon, Cork	Dunleavy Meats, Mayo
AIBP, Cahir, Tipperary	Edenmore Farm Meats, Donegal
AIBP, Clones, Monaghan	Eurowest Foods, Hacketstown, Carlow
AIBP, Nenagh, Tipperary	Eurofarm Foods, Meath
AIBP, Rathkeale, Limerick	Glynns, Limerick
AIBP, Waterford	Kepak, Athleague, Roscommon
Ashbourne Meats, Tipperary	Kepak, Bandon, Cork
B & F Meats, Kilkenny	Kepak, Clonee, Meath
Ballaghaderreen Bacon Co, Roscommon	Kepak, Kilbeggan, Westmeath
Ballon Meats, Carlow	Kildare Chilling, Kildare
Moyvalley Meats, Broadford, Kildare	Liffey Meats, Cavan
Charleville Foods, Cork	Martin Jennings, Mayo
Dawn Ballyhaunis, Mayo	Meadow Meats, Laois
Dawn Meats, Waterford	O'Connor Meats, Galway
Donegal Meats, Donegal	Slaney Meats, Wexford
Dunbia Meats, Meath	

APPENDIX

Official List of Breed Codes

AA	ABERDEEN ANGUS	LJ	LITHUANIAN BLACK & WHITE
AK	ANKOLE	LH	LONGHORN
AM	AMORICAINE	LM	LIMOUSIN
AN	ANGLER	LR	LINCOLN RED
AU	AUBRAC	LU	LUING
AY	AYRSHIRE	MA	MAINE ANJOU
BA	BLONDE D'AQUITAUNE	MH	MARCHIGIANA
BB	BELGIAN BLUE	MK	MAKEKORTHORN
BE	BEEFALO	MO	MONTBELIARDE
BF	WATER BUFFALO	MY	MEUSE RHINE YSSEL
BG	BLUE GREY	NO	NORMANDE
BI	BISON	NR	NORWEGIAN RED
BL	BLUE ALBION	OE	OLD ENGLISH
BP	BRETONNE PIE-NOIRE	PI	PIEDMONTESE
BR	BRAHMAN	PT	PARTENAISE
BS	BROWN SWISS	PZ	PINZGUAER
BT	BALATA ROMANEASCA	RB	ROTBUNTE
BW	BRITISH WHITE	RD	DANISH RED
BZ	BAZADAIS	RE	REGGIANA
CB	CANADIAN BLACK	RM	ROMAGNOLA
CH	CHAROLAIS	RP	RED POLL
CL	CHILLINGHAM	SA	SALERS
CI	CHIANINA	SD	SOUTH DEVON
DE	DEVON	SG	SWISS GREY
DX	DEXTER	SH	SHORTHORN
DZ	DWARF ZEBU	SI	SIMMENTAL
EF	EAST FINNISH BROWN	SL	SHETLAND
EP	ENGLISH PARK	SP	SPECKLE PARK
FE	FRISONA ESPAGNOLA	SR	SWEDISH RED AND WHITE
FR	HOLSTEIN FRIESIAN	ST	STABILISER
GA	GALLOWAY	SU	SUSSEX
GB	GRONINGER BLAARKOP	TT	TARANTAISE-TARINA
GC	GASCONNE	TY	TYRONE BLACK
GL	GLOUCESTER	VA	VAYNOL
GS	MURRAY GREY	VN	VALDOSTANA NERA
GU	GUERNSEY	VO	VOSGIENNE
GV	GELBVIEH	WA	WAGYU
GY	GAYAL	WB	WELSH BLACK
HE	HEREFORD	WP	WHITE PARK
HI	HIGHLAND	WW	WELSH WHITE
IM	IRISH MAOL/DROIMEANN	YK	YAK
JE	JERSEY	ZE	ZEBU
KE	KERRY		