

AIM Bovine

Statistics Report

2009

The Animal Identification and Movement (AIM) system is a generic traceability system that will cover various animal species. Statistical data for bovines is now sourced from the AIM system and the name of the report formerly called CMMS Statistics Report has been changed to AIM Bovine Statistics Report.

The 2009 Statistics Report will be available for download from the Department's website.

Issued by NBAS Division, Backweston Campus

All rights reserved. No part of this publication may be reproduced, stored in a retrieval system, or transmitted in any form or by any means, electronic, mechanical, photocopying, recording or otherwise without acknowledgement of the source.



Contents

Contents.....	1
Chapter 1 Calf Birth Registration Data.....	4
SECTION 1	5
Calf Births by Month.....	5
Calf Births by Month and Gender.....	5
Calf Births by County, Gender and Sire Type.....	6
Number of Calves per Breeding Herd.....	7
Total Number of Beef and Dairy Calves by County	8
SECTION 2	9
Calf Births by Month and Sire Type	9
SECTION 3	10
Calf Births by Month and by Breed of Dam	10
SECTION 4	11
Sire Selection for Beef Dams.....	11
Sire Selection for Dairy Dams.....	11
Breed Composition of 2009 Born Calves.....	12
SECTION 5	13
Cattle Imports by country of origin and gender.....	13
Cattle imports for further breeding and production by country of origin and age	13
Age Profile of Cattle Imports from UK which went for immediate slaughter.....	13
Chapter 2 Movement Data.....	14
SECTION 1	15
Mart Movements by Month and by Gender	15
Age Profile of Mart Movements for Beef Cattle by Month and by Gender	16
Age Profile of Mart Movements for Dairy Cattle by Month and by Gender	17
SECTION 2	18
Farm to Farm Movements by Month and by Gender.....	18
Age Profile of Farm to Farm Movements for Beef Cattle by Month and by Gender.....	19
Age Profile of Farm to Farm Movements for Dairy Cattle by Month and by Gender	20
SECTION 3	21
All Cattle Movements by Month and by Type	21
All Cattle Movements by Month and by Gender	22
Chapter 3 Disposal of Cattle	23
SECTION 1	24
Overall Summary of Cattle Disposals and On Farm Deaths - Graphs	24
Overall Summary of Cattle Disposals and On Farm Deaths - Figures.....	25
SECTION 2	26
Cattle Disposals in Department approved Slaughter Plants by Month and by Gender.....	26
Age Profile of Slaughterings in Department approved plants for Beef Cattle by Month and by Gender	27
Age Profile of Slaughterings in Department approved plants for Dairy Cattle by Month and by Gender	28

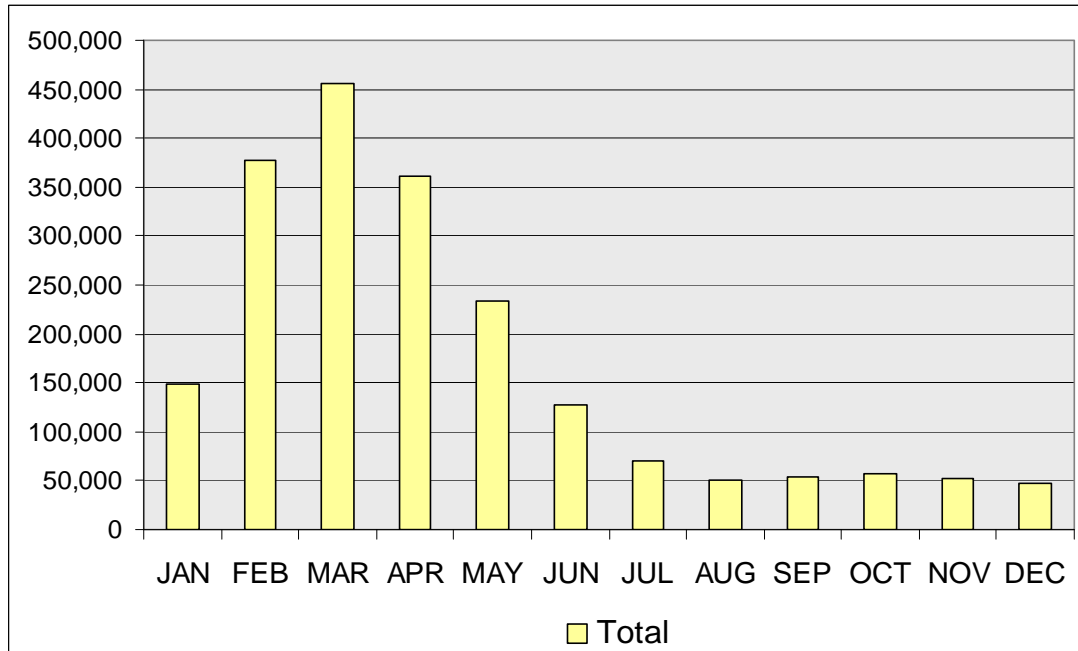
SECTION 3	29
Cattle Disposals in Local Authority approved Slaughter Plants by Month and by Gender	29
Age Profile of Slaughterings in Local Authority approved Slaughter Plants for Beef Cattle by Month and by Gender	30
Age Profile of Slaughterings in Local Authority approved Slaughter Plants for Dairy Cattle by Month and by Gender	31
SECTION 4	32
On Farm Deaths by Month and by Gender	32
Age Profile of On Farm Deaths for Male Beef Cattle by Month	33
Age Profile of On Farm Deaths for Female Beef Cattle by Month	33
Age Profile of On Farm Deaths for Male Dairy Cattle by Month	34
Age Profile of On Farm Deaths for Female Dairy Cattle by Month	34
SECTION 5	35
Stillborn Calves by Month and by Gender	35
Stillborn Calves by Month, Gender and Sire	35
SECTION 6	36
Live Exports by Month and by Gender	36
Age Profile of Live Exports for Beef Cattle by Month and by Gender	37
Age Profile of Live Exports for Dairy Cattle by Month and by Gender	38
Destination of Live Exports	39
Age Profile of Live Exports by Breed	40
Destination of Live Exports by Age	41
Chapter 4 National Herd Data	42
SECTION 1	43
Age Profile of Live Herd at 31/12/2009 by Gender	43
Cattle Population by Age	43
SECTION 2	44
Age Profile of Live Herd at 31/12/2009 by County	44
SECTION 3	45
Age Profile of Live Herd at 31/12/2009 by Breed	45
Age Profile of Live Herd at 31/12/2009 by County and by Breed	46
SECTION 5	47
Profile of Herd Size at 31/12/2009	47
Imported Animals in the Live Herd at 31/12/2009	48
Bovine Population 2009	49
Chapter 5 Suppliers of Data	50
LIVESTOCK MARTS	51
LOCAL AUTHORITY ABATTOIRS - Start	52
LOCAL AUTHORITY ABATTOIRS - End	53
APPROVED EXPORT POINTS	54
LICENSED KNACKERIES	55
FACTORIES	56
APPENDIX	57
Official List of Breed Codes	57

Chapter 1 Calf Birth Registration Data



SECTION 1

Calf Births by Month



Calf Births by Month and Gender

Month	M	F	Total
January	73,696	74,420	148,116
February	193,859	184,000	377,859
March	235,540	219,597	455,137
April	186,208	174,144	360,352
May	120,529	113,030	233,559
June	65,514	61,968	127,482
July	36,230	34,575	70,805
August	25,296	24,755	50,051
September	27,268	26,757	54,025
October	29,362	28,270	57,632
November	27,033	26,044	53,077
December	23,949	23,338	47,287
Total	1,044,484	990,898	2,035,382

Calf Births by County, Gender and Sire Type

County	Calves born to a Beef Bull			Calves born to a Dairy Bull			Overall	% of
	Male	Female	Total	Male	Female	Total	Total	Total
Carlow	10,291	9,737	20,028	3,103	2,956	6,059	26,087	1.3
Cavan	29,895	28,469	58,364	8,931	8,569	17,500	75,864	3.7
Clare	43,136	41,068	84,204	7,435	7,147	14,582	98,786	4.9
Cork	89,917	83,321	173,238	87,101	82,416	169,517	342,755	16.8
Donegal	23,711	22,416	46,127	5,758	5,705	11,463	57,590	2.8
Dublin	2,159	1,996	4,155	637	667	1,304	5,459	0.3
Galway	57,596	55,535	113,131	7,112	6,863	13,975	127,106	6.2
Kerry	40,316	37,927	78,243	25,393	24,454	49,847	128,090	6.3
Kildare	10,615	10,280	20,895	3,296	3,187	6,483	27,378	1.3
Kilkenny	29,385	27,584	56,969	17,397	16,718	34,115	91,084	4.5
Laois	21,971	20,611	42,582	8,618	8,453	17,071	59,653	2.9
Leitrim	13,918	13,195	27,113	554	530	1,084	28,197	1.4
Limerick	39,086	36,392	75,478	25,637	24,832	50,469	125,947	6.2
Longford	14,794	14,073	28,867	1,703	1,831	3,534	32,401	1.6
Louth	7,296	6,725	14,021	4,136	3,962	8,098	22,119	1.1
Mayo	42,117	40,256	82,373	4,524	4,356	8,880	91,253	4.5
Meath	22,939	21,291	44,230	13,179	12,813	25,992	70,222	3.5
Monaghan	21,816	21,164	42,980	8,967	8,610	17,577	60,557	3.0
Offaly	20,503	19,347	39,850	5,655	5,303	10,958	50,808	2.5
Roscommon	27,995	26,873	54,868	1,290	1,298	2,588	57,456	2.8
Sligo	17,560	16,550	34,110	2,157	2,165	4,322	38,432	1.9
Tipperary	54,512	51,088	105,600	34,824	33,184	68,008	173,608	8.5
Waterford	22,787	21,586	44,373	17,386	16,769	34,155	78,528	3.9
Westmeath	21,098	19,879	40,977	5,513	5,370	10,883	51,860	2.5
Wexford	26,184	24,278	50,462	14,190	13,487	27,677	78,139	3.8
Wicklow	13,638	13,057	26,695	4,753	4,555	9,308	36,003	1.8
Total	725,235	684,698	1,409,933	319,249	306,200	625,449	2,035,382	

Number of Calves per Breeding Herd

County	No of Breeding Herds	% of Total Breeding Herds
Carlow	970	1.1
Cavan	3,749	4.4
Clare	4,990	5.9
Cork	8,819	10.4
Donegal	4,279	5.1
Dublin	240	0.3
Galway	8,747	10.3
Kerry	5,012	5.9
Kildare	1,068	1.3
Kilkenny	2,349	2.8
Laois	1,908	2.3
Leitrim	2,695	3.2
Limerick	3,741	4.4
Longford	1,822	2.2
Louth	749	0.9
Mayo	7,653	9.0
Meath	2,209	2.6
Monaghan	2,924	3.5
Offaly	1,990	2.4
Roscommon	4,012	4.7
Sligo	2,891	3.4
Tipperary	4,612	5.4
Waterford	1,656	2.0
Westmeath	2,028	2.4
Wexford	2,280	2.7
Wicklow	1,265	1.5
Total	84,658	

Number of calves per breeding herd and % of County Total									
1-10	%	11-24	%	25-49	%	50-74	%	75+	%
282	29.1	299	30.8	227	23.4	111	11.4	51	5.3
1,459	38.9	1,230	32.8	775	20.7	197	5.3	88	2.3
1,816	36.4	1,813	36.3	1,030	20.6	230	4.6	101	2.0
1,947	22.1	1,973	22.4	2,284	25.9	1,431	16.2	1,184	13.4
2,711	63.4	1,037	24.2	354	8.3	88	2.1	89	2.1
118	49.2	51	21.3	39	16.3	20	8.3	12	5.0
4,570	52.2	2,630	30.1	1,241	14.2	217	2.5	89	1.0
1,818	36.3	1,425	28.4	1,003	20.0	458	9.1	308	6.1
402	37.6	276	25.8	236	22.1	80	7.5	74	6.9
416	17.7	538	22.9	696	29.6	428	18.2	271	11.5
482	25.3	539	28.2	511	26.8	221	11.6	155	8.1
1,726	64.0	770	28.6	174	6.5	20	0.7	5	0.2
1,013	27.1	902	24.1	895	23.9	539	14.4	392	10.5
749	41.1	657	36.1	319	17.5	68	3.7	29	1.6
267	35.6	199	26.6	143	19.1	74	9.9	66	8.8
4,572	59.7	2,319	30.3	613	8.0	99	1.3	50	0.7
710	32.1	554	25.1	500	22.6	221	10.0	224	10.1
1,060	36.3	1,011	34.6	597	20.4	186	6.4	70	2.4
680	34.2	560	28.1	464	23.3	183	9.2	103	5.2
1,979	49.3	1,388	34.6	551	13.7	72	1.8	22	0.5
1,593	55.1	946	32.7	278	9.6	54	1.9	20	0.7
964	20.9	1,048	22.7	1,295	28.1	729	15.8	576	12.5
287	17.3	281	17.0	433	26.1	317	19.1	338	20.4
684	33.7	581	28.6	506	25.0	154	7.6	103	5.1
531	23.3	569	25.0	610	26.8	346	15.2	224	9.8
380	30.0	387	30.6	279	22.1	116	9.2	103	8.1
33,216		23,983		16,053		6,659		4,747	

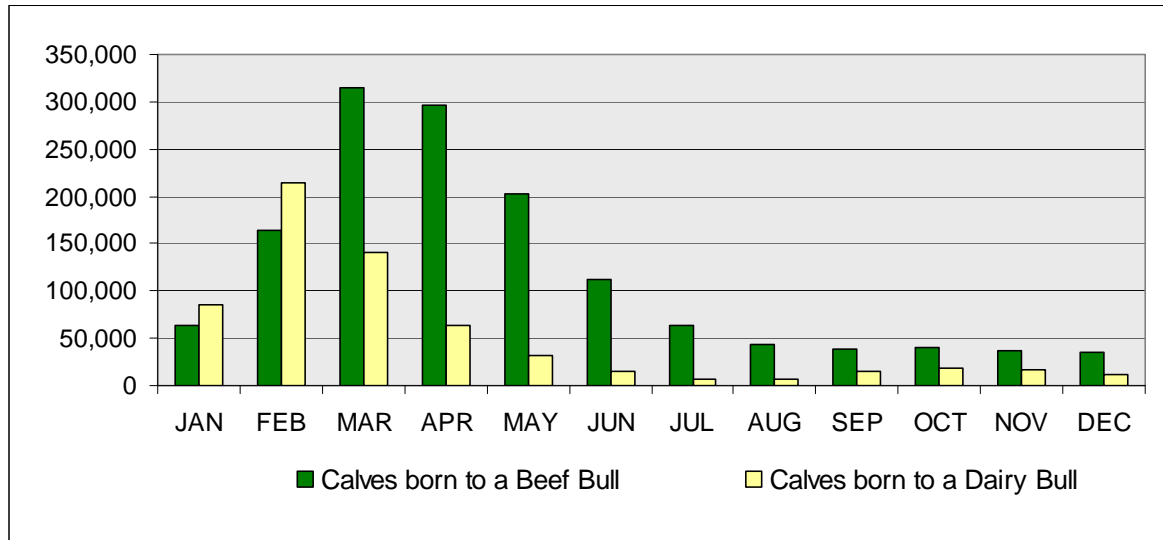
Total Number of Beef and Dairy Calves by County

For the purposes of this table, Beef and Dairy calves are defined by Breed of Dam

County	Beef Calves	% Beef	Dairy Calves	% Dairy	Total Calves
Carlow	16,140	61.9	9,947	38.1	26,087
Cavan	45,014	59.3	30,850	40.7	75,864
Clare	71,002	71.9	27,784	28.1	98,786
Cork	77,766	22.7	264,989	77.3	342,755
Donegal	42,016	73.0	15,574	27.0	57,590
Dublin	3,392	62.1	2,067	37.9	5,459
Galway	102,240	80.4	24,866	19.6	127,106
Kerry	42,465	33.2	85,625	66.8	128,090
Kildare	17,087	62.4	10,291	37.6	27,378
Kilkenny	36,704	40.3	54,380	59.7	91,084
Laois	33,227	55.7	26,426	44.3	59,653
Leitrim	26,223	93.0	1,974	7.0	28,197
Limerick	36,557	29.0	89,390	71.0	125,947
Longford	26,020	80.3	6,381	19.7	32,401
Louth	10,428	47.1	11,691	52.9	22,119
Mayo	75,633	82.9	15,620	17.1	91,253
Meath	33,362	47.5	36,860	52.5	70,222
Monaghan	29,210	48.2	31,347	51.8	60,557
Offaly	31,722	62.4	19,086	37.6	50,808
Roscommon	52,662	91.7	4,794	8.3	57,456
Sligo	30,778	80.1	7,654	19.9	38,432
Tipperary	64,608	37.2	109,000	62.8	173,608
Waterford	25,793	32.8	52,735	67.2	78,528
Westmeath	35,354	68.2	16,506	31.8	51,860
Wexford	32,163	41.2	45,976	58.8	78,139
Wicklow	20,941	58.2	15,062	41.8	36,003
Total	1,018,507	50.04	1,016,875	49.96	2,035,382

SECTION 2

Calf Births by Month and Sire Type



Calf Births by Month, Gender and Sire Type

Month	Calves born to a Beef bull			Calves born to a Dairy bull			Total
	Male	Female	Total	Male	Female	Total	
January	32,256	31,235	63,491	41,440	43,185	84,625	148,116
February	83,628	80,058	163,686	110,231	103,942	214,173	377,859
March	162,265	151,980	314,245	73,275	67,617	140,892	455,137
April	153,623	143,524	297,147	32,585	30,620	63,205	360,352
May	104,523	97,445	201,968	16,006	15,585	31,591	233,559
June	57,681	54,182	111,863	7,833	7,786	15,619	127,482
July	32,530	30,787	63,317	3,700	3,788	7,488	70,805
August	21,811	21,019	42,830	3,485	3,736	7,221	50,051
September	19,842	19,214	39,056	7,426	7,543	14,969	54,025
October	20,237	19,603	39,840	9,125	8,667	17,792	57,632
November	18,933	18,140	37,073	8,100	7,904	16,004	53,077
December	17,906	17,511	35,417	6,043	5,827	11,870	47,287
Total	725,235	684,698	1,409,933	319,249	306,200	625,449	2,035,382

SECTION 3

Calf Births by Month and by Breed of Dam

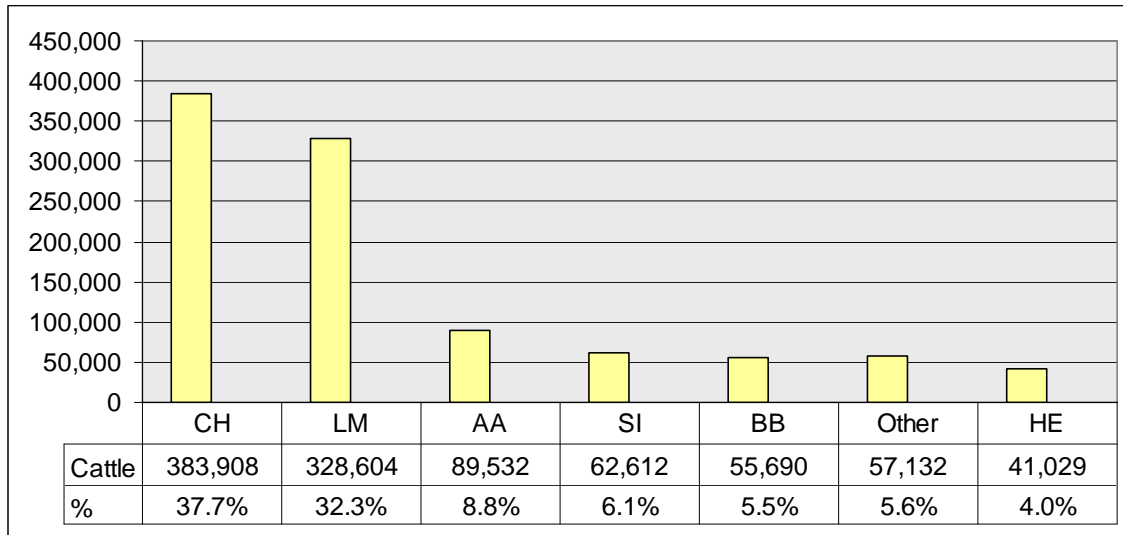
Month	FR	LM	CH	SI	AA	HE	BB	SH	MO	Other*	SA	RB	BA	JE	MY	Total
JAN	96,717	12,758	10,223	7,004	5,463	4,905	2,811	1,535	2,499	1,261	559	793	422	837	329	148,116
FEB	264,567	25,524	20,888	14,719	12,100	10,681	5,336	3,149	7,781	3,624	1,097	2,997	695	3,646	1,055	377,859
MAR	228,549	59,043	48,860	29,149	26,261	23,359	10,934	7,059	8,199	3,543	2,632	2,325	1,571	2,681	972	455,137
APR	137,945	61,660	52,068	26,619	26,702	22,730	10,699	7,562	5,067	2,563	2,265	1,263	1,513	1,124	572	360,352
MAY	80,523	41,706	37,486	17,769	19,041	16,257	7,143	5,415	2,866	1,454	1,508	599	1,063	432	297	233,559
JUN	40,885	23,291	22,141	9,994	10,721	9,180	4,134	2,986	1,395	799	753	284	585	184	150	127,482
JUL	19,360	13,457	12,971	5,951	6,607	5,788	2,608	1,769	622	513	469	194	348	68	80	70,805
AUG	13,070	10,321	8,872	4,369	4,580	4,109	1,808	1,132	456	434	403	86	296	64	51	50,051
SEP	19,293	10,465	7,370	4,551	3,924	3,476	1,782	879	570	464	440	73	438	201	99	54,025
OCT	22,641	11,197	7,251	4,576	3,765	3,346	1,804	810	636	424	429	87	436	141	89	57,632
NOV	20,710	10,168	6,858	4,424	3,349	2,868	1,782	764	588	384	485	71	439	109	78	53,077
DEC	15,590	10,196	6,853	4,496	3,144	2,661	1,721	728	484	354	433	97	395	62	73	47,287
Total	959,850	289,786	241,841	133,621	125,657	109,360	52,562	33,788	31,163	15,817	11,473	8,869	8,201	9,549	3,845	2,035,382

FR: Friesian LM: Limousin CH: Charolais SI: Simmental AA: Aberdeen Angus
 HE: Hereford BB: Belgian Blue SH: Shorthorn MO: Montbelliarde SA: Salers
 RB: Rotbunte BA: Blonde D'Aquitaine JE: Jersey MY: Meuse Rhine Yssel

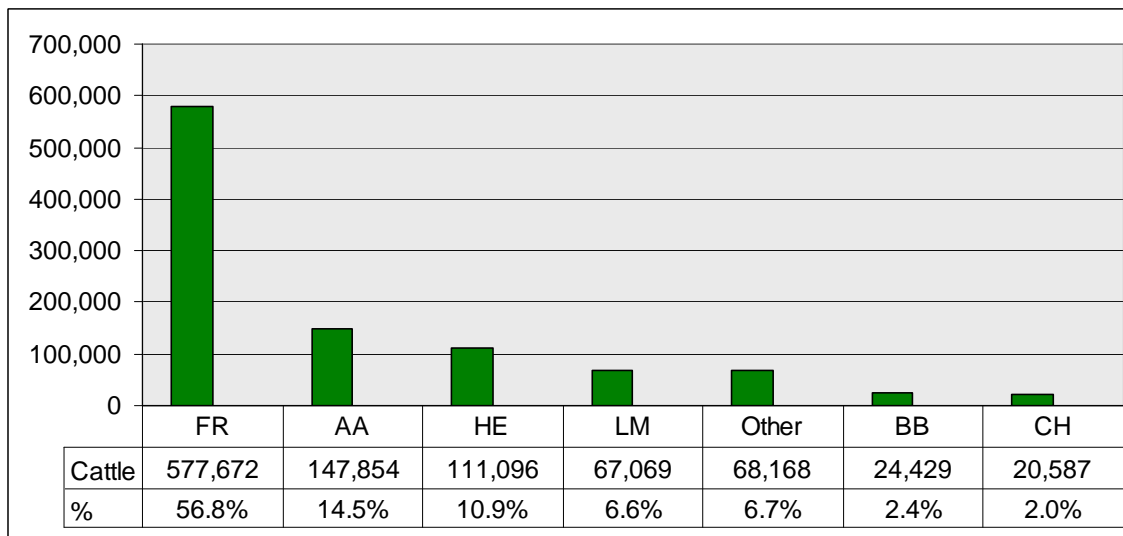
* For full list of breed codes see Appendix

SECTION 4

Sire Selection for Beef Dams



Sire Selection for Dairy Dams



Breed Composition of 2009 Born Calves

Breed of Sire	Breed of Dam															
	Breed	FR	LM	CH	SI	AA	HE	BB	SH	MO	Other*	SA	BA	RB	MY	JE
FR	559,724	1,148	385	1,493	1,795	1,493	857	940	8,258	3,564	17	25	3,550	1,119	5,242	589,610
HE	106,884	4,551	3,627	3,624	4,881	20,696	1,360	1,304	2,836	805	134	106	644	293	396	152,141
CH	18,014	88,962	145,173	45,577	37,715	33,939	16,466	9,562	2,024	1,028	3,862	1,754	230	152	82	404,540
SI	18,699	10,670	9,606	26,256	5,023	6,125	2,368	1,644	1,084	306	367	263	160	129	44	82,744
LM	61,747	141,276	57,382	37,869	30,763	29,694	18,268	7,495	4,199	1,481	2,370	2,108	511	350	194	395,707
AA	141,205	14,492	11,353	8,237	35,575	10,386	3,942	3,092	3,994	1,591	526	367	1,248	485	907	237,400
BA	1,047	2,365	1,454	1,019	632	544	820	151	149	75	201	2,216	13	4	19	10,709
BB	22,342	20,460	8,629	6,507	5,786	3,800	7,031	1,341	1,521	524	659	1,067	171	165	124	80,127
JE	10,226	33	3	13	70	11	14	45	252	551	0	0	142	22	2,108	13,490
MO	4,552	45	80	138	86	83	35	36	5,705	136	6	1	139	90	30	11,162
RB	2,732	36	9	39	24	15	13	14	218	154	0	2	1,684	108	40	5,088
MY	564	2	2	13	5	8	9	13	46	72	0	0	70	796	0	1,600
SA	2,179	2,001	1,758	925	1,090	887	424	461	169	109	3,037	83	31	19	26	13,199
SH	2,730	1,430	1,140	869	1,349	946	405	7,361	165	248	90	18	15	32	44	16,842
Other*	7,205	2,315	1,240	1,042	863	733	550	329	543	5,173	204	191	261	81	293	21,023
Total	959,850	289,786	241,841	133,621	125,657	109,360	52,562	33,788	31,163	15,817	11,473	8,201	8,869	3,845	9,549	2,035,382

FR: Friesian
HE: Hereford
RB: Rotbunte

LM: Limousin
BB: Belgian Blue
BA: Blonde D'Aquitaine

CH: Charolais
SH: Shorthorn
JE: Jersey

SI: Simmental
MO: Montbelliarde
MY: Meuse Rhine Yssel

AA: Aberdeen Angus
SA: Salers

* For full list of breed codes see Appendix

SECTION 5

Cattle Imports by country of origin and gender

	Male	Female	Total
UK *	3,653	7,007	10,660
France	26	49	75
Netherlands	0	4	4
Total	3,679	7,060	10,739

* Of the cattle imported from UK, 6,716 went for immediate slaughter

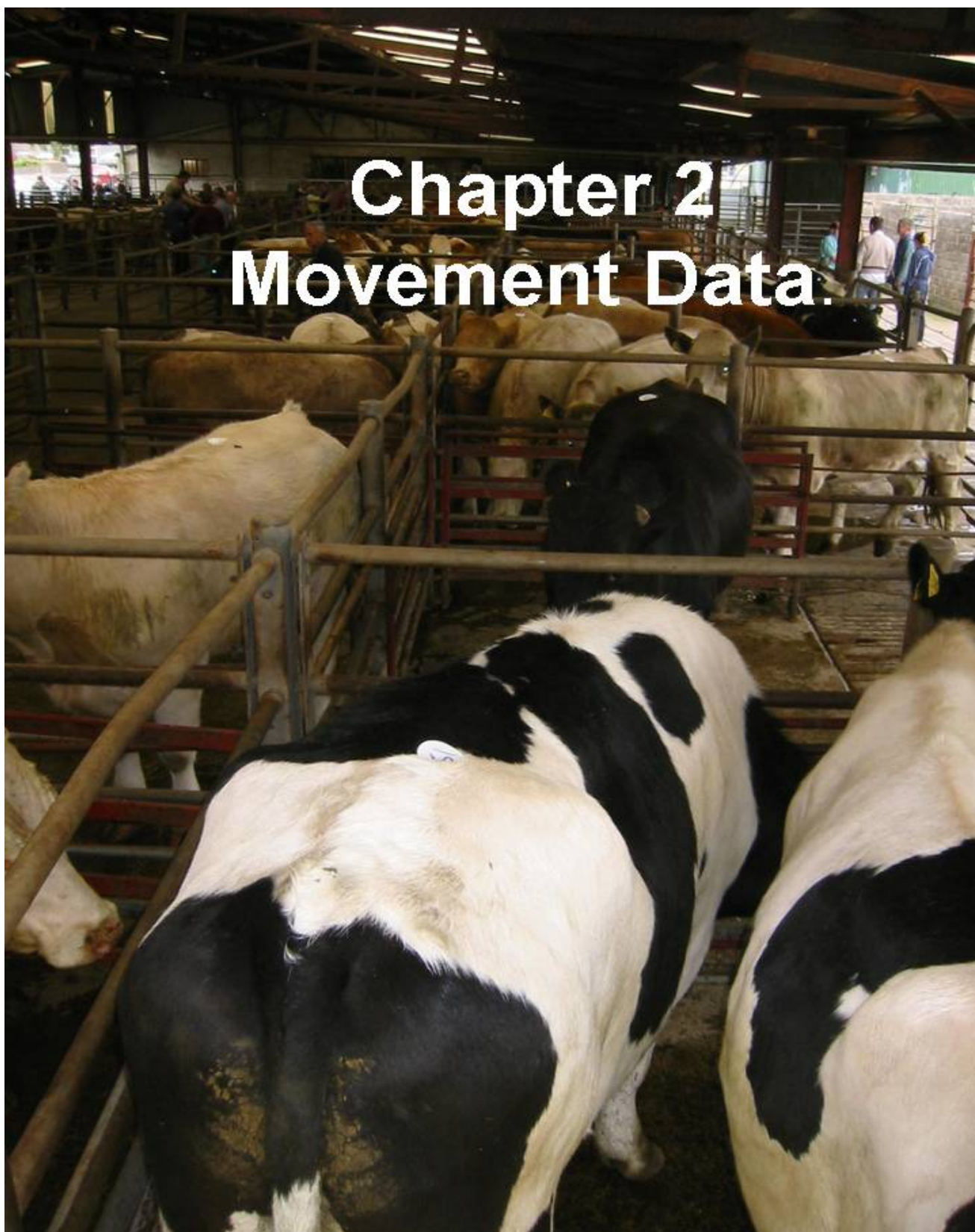
Cattle imports for further breeding and production by country of origin and age

Figures excludes cattle imported from UK which went for immediate slaughter

	0 - 12 Mts	12- 18 Mts	18 - 24 Mts	24 - 36 Mts	36 Mts +	Total
UK	2,797	260	231	289	367	3,944
France	19	6	3	4	43	75
Netherlands	0	0	0	3	1	4
Total	2,816	266	234	296	411	4,023

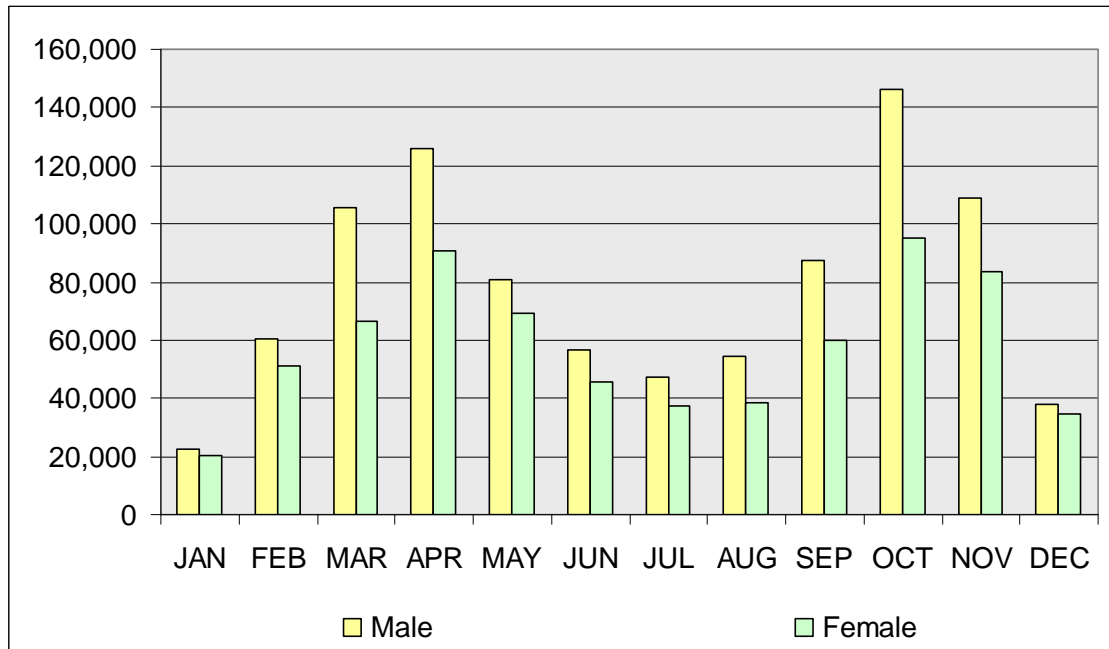
Age Profile of Cattle Imports from UK which went for immediate slaughter

0 - 24 Mts	24 - 48 Mts	48 - 72 Mts	72 - 96 Mts	96 - 120 Mts	120 Mts +	Total
584	899	1,561	1,698	1,147	827	6,716



SECTION 1

Mart Movements by Month and by Gender



Month	Male	Female	Total
January	22,695	20,492	43,187
February	60,677	51,057	111,734
March	105,520	66,405	171,925
April	126,016	90,994	217,010
May	80,570	69,065	149,635
June	56,692	45,758	102,450
July	47,118	37,302	84,420
August	54,686	38,672	93,358
September	87,516	60,070	147,586
October	146,405	94,917	241,322
November	108,668	83,830	192,498
December	38,045	34,613	72,658
Total	934,608	693,175	1,627,783

These figures include 189,302 movements where the animal was unsold in the mart.

Age Profile of Mart Movements for Beef Cattle by Month and by Gender

For the purposes of this table, Beef Cattle are defined as the progeny of Bulls of a Beef Breed

Month	0 - 6 wks		6 wks - 6 Mts		6 - 12 Mts		12 - 18 Mts		18 - 24 Mts		24 - 30 Mts		30 Mts +		Total
	M	F	M	F	M	F	M	F	M	F	M	F	M	F	
January	967	740	441	353	7,868	6,849	1,352	917	5,407	4,527	664	485	1,205	4,290	36,065
February	3,220	2,667	626	504	18,000	15,296	4,158	3,238	13,439	11,358	2,226	1,722	2,569	9,643	88,666
March	10,707	8,580	701	603	21,082	16,791	13,011	7,861	17,475	10,284	7,443	3,836	2,997	9,049	130,420
April	12,377	10,496	1,362	1,195	20,475	16,468	27,922	20,570	17,703	10,519	15,935	8,270	3,594	10,837	177,723
May	11,497	9,974	2,417	2,302	9,958	7,442	22,369	16,973	6,985	4,719	10,908	6,770	2,145	11,511	125,970
June	7,159	6,117	2,389	2,159	5,514	3,999	18,283	12,867	3,696	2,416	8,264	4,969	1,614	8,133	87,579
July	3,028	2,533	1,949	1,741	4,692	3,216	16,857	13,131	2,909	2,061	8,153	4,727	1,488	6,407	72,892
August	1,484	1,189	2,855	2,295	8,565	5,522	18,159	13,574	4,701	3,023	9,259	4,255	2,094	6,282	83,257
September	764	652	6,067	4,124	16,542	10,423	22,779	17,996	13,635	8,885	13,121	5,651	4,727	8,842	134,208
October	824	696	10,283	6,668	44,086	28,518	23,313	16,444	32,934	19,460	11,782	5,523	9,198	13,294	223,023
November	813	606	6,253	4,233	36,060	25,353	11,873	9,278	28,042	19,892	6,331	3,504	8,718	15,354	176,310
December	579	428	1,570	1,170	12,382	9,380	3,740	3,002	10,283	7,915	1,678	1,191	3,399	7,914	64,631
Total	53,419	44,678	36,913	27,347	205,224	149,257	183,816	135,851	157,209	105,059	95,764	50,903	43,748	111,556	1,400,744

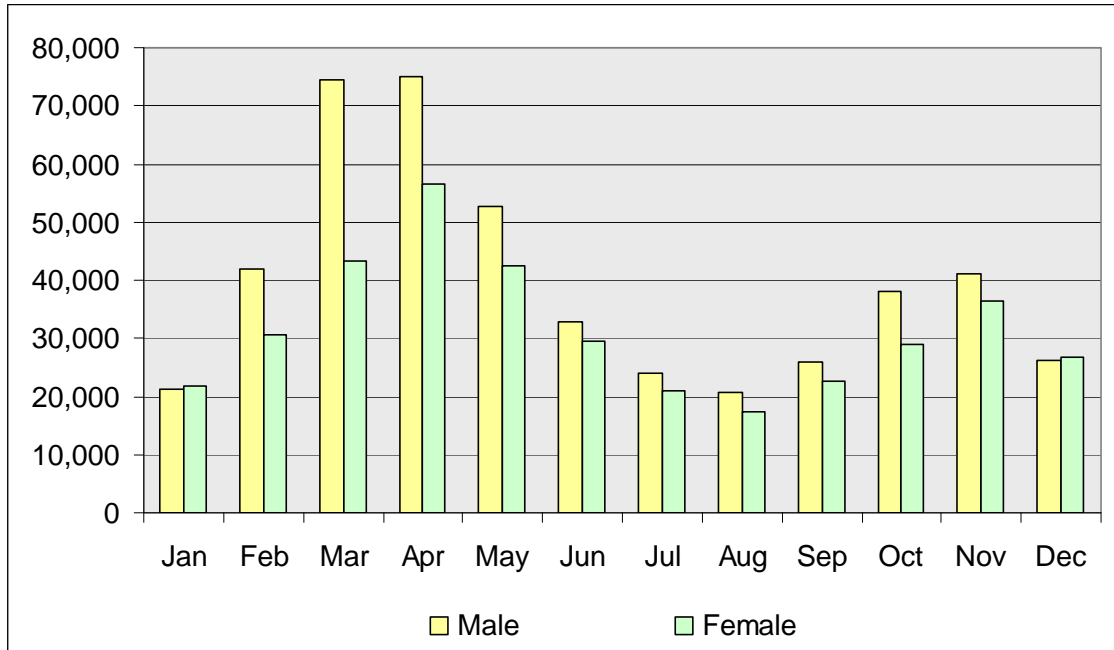
Age Profile of Mart Movements for Dairy Cattle by Month and by Gender

For the purposes of this table, Dairy Cattle are defined as the progeny of Bulls of a Dairy Breed

Month	0 - 6 wks		6 wks - 6 Mts		6 - 12 Mts		12 - 18 Mts		18 - 24 Mts		24 - 30 Mts		30 Mts +		Total
	M	F	M	F	M	F	M	F	M	F	M	F	M	F	
January	1,837	42	374	13	872	39	201	6	1,186	186	153	50	168	1,995	7,122
February	11,500	196	273	14	1,013	71	1,064	46	1,513	504	805	531	271	5,267	23,068
March	22,119	715	570	39	975	109	3,996	128	1,490	517	2,623	1,409	331	6,484	41,505
April	11,711	821	1,465	192	930	159	7,424	641	1,177	363	3,599	1,967	342	8,496	39,287
May	5,407	707	1,309	202	412	90	4,554	703	532	169	1,868	1,120	209	6,383	23,665
June	2,467	464	889	139	300	68	4,004	272	412	50	1,479	429	222	3,676	14,871
July	1,024	199	593	115	255	46	3,968	223	586	42	1,369	295	247	2,566	11,528
August	453	92	420	50	352	11	2,417	103	2,288	32	1,142	155	497	2,089	10,101
September	464	31	208	63	726	61	1,643	175	5,065	149	790	155	985	2,863	13,378
October	922	33	183	58	1,856	107	1,201	111	8,029	310	587	163	1,207	3,532	18,299
November	1,080	29	256	39	1,776	117	651	59	5,457	362	353	125	1,005	4,879	16,188
December	776	21	150	13	639	81	202	33	2,132	380	158	91	357	2,994	8,027
Totals	59,760	3,350	6,690	937	10,106	959	31,325	2,500	29,867	3,064	14,926	6,490	5,841	51,224	227,039

SECTION 2

Farm to Farm Movements by Month and by Gender



Month	Male	Female	Total
January	21,117	21,772	42,889
February	41,884	30,531	72,415
March	74,564	43,287	117,851
April	75,097	56,443	131,540
May	52,665	42,412	95,077
June	32,762	29,444	62,206
July	23,914	20,906	44,820
August	20,722	17,369	38,091
September	26,046	22,523	48,569
October	37,954	28,881	66,835
November	40,977	36,393	77,370
December	26,107	26,754	52,861
Total	473,809	376,715	850,524

Age Profile of Farm to Farm Movements for Beef Cattle by Month and by Gender

For the purposes of this table, Beef Cattle are defined as the progeny of Bulls of a Beef Breed

Month	0 - 6 wks		6 wks - 6 Mts		6 - 12 Mts		12 - 18 Mts		18 - 24 Mts		24 - 30 Mts		30 Mts +		Total
	M	F	M	F	M	F	M	F	M	F	M	F	M	F	
January	1,133	983	760	618	6,646	5,557	1,231	640	2,917	2,318	372	378	651	3,879	28,083
February	3,924	3,488	560	491	6,754	5,886	1,780	1,253	3,288	2,666	478	646	743	4,797	36,754
March	11,144	9,470	774	698	8,455	6,130	5,076	2,826	4,416	2,726	1,735	1,359	1,105	5,143	61,057
April	11,991	10,771	1,683	1,496	8,398	6,766	11,851	7,157	4,794	2,988	3,948	2,854	1,566	6,341	82,604
May	8,703	8,181	2,609	2,394	4,532	3,293	10,609	6,127	2,864	1,641	4,097	2,780	1,458	5,781	65,069
June	4,589	4,449	2,693	2,605	2,540	1,625	7,679	4,912	1,333	771	2,458	1,890	1,031	4,375	42,950
July	1,927	1,892	2,403	2,503	2,055	1,302	6,776	4,437	882	632	1,870	1,691	765	3,312	32,447
August	883	721	2,263	1,798	1,947	1,221	6,038	3,826	1,216	853	1,737	1,564	769	2,840	27,676
September	584	528	2,853	2,171	4,149	2,610	6,114	3,669	3,056	1,874	1,800	1,307	1,069	3,870	35,654
October	762	689	3,192	2,409	9,100	6,094	5,084	3,293	5,640	3,779	1,574	1,114	1,644	4,843	49,217
November	836	667	2,535	1,867	11,806	8,203	3,902	2,468	7,361	5,401	1,349	1,089	2,089	6,531	56,104
December	739	772	1,117	988	7,472	5,750	1,851	1,334	5,021	3,473	642	574	1,512	5,171	36,416
Total	47,215	42,611	23,442	20,038	73,854	54,437	67,991	41,942	42,788	29,122	22,060	17,246	14,402	56,883	554,031

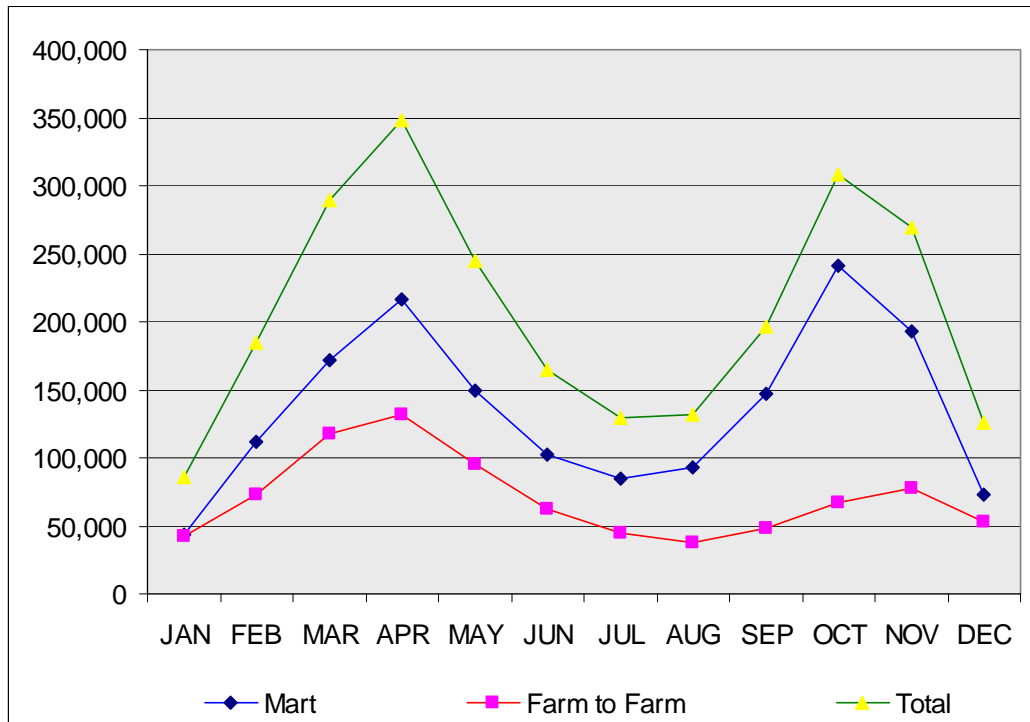
Age Profile of Farm to Farm Movements for Dairy Cattle by Month and by Gender

For the purposes of this Table, Dairy Cattle are defined as the progeny of Bulls of a Dairy Breed

Month	0 - 6 wks		6 wks - 6 Mts		6 - 12 Mts		12 - 18 Mts		18 - 24 Mts		24 - 30 Mts		30 Mts +		Total
	M	F	M	F	M	F	M	F	M	F	M	F	M	F	
January	2,870	191	1,244	138	1,732	693	301	139	1,035	1,746	113	364	112	4,128	14,806
February	19,880	1,177	1,337	195	1,312	746	722	256	656	1,662	347	1,249	103	6,019	35,661
March	34,150	3,112	2,157	359	1,275	509	2,579	1,060	704	761	847	2,247	147	6,887	56,794
April	18,028	2,754	4,034	1,160	1,093	388	4,929	2,108	660	520	1,874	2,405	248	8,735	48,936
May	8,067	1,430	3,809	1,461	653	247	3,399	1,476	426	240	1,195	1,249	244	6,112	30,008
June	3,472	637	2,885	1,291	433	186	2,406	860	310	162	762	872	171	4,809	19,256
July	1,341	235	2,504	794	499	149	1,986	563	215	104	549	431	142	2,861	12,373
August	687	149	1,759	585	995	334	1,202	515	729	315	297	349	200	2,299	10,415
September	1,105	170	706	347	1,301	732	838	451	1,837	889	212	400	422	3,505	12,915
October	4,274	204	624	317	2,110	576	525	261	2,677	1,359	223	247	525	3,696	17,618
November	3,457	197	502	189	2,834	1,300	576	244	2,930	2,504	205	327	595	5,406	21,266
December	2,653	245	886	124	1,614	1,038	326	139	1,934	1,822	93	201	247	5,123	16,445
Total	99,984	10,501	22,447	6,960	15,851	6,898	19,789	8,072	14,113	12,084	6,717	10,341	3,156	59,580	296,493

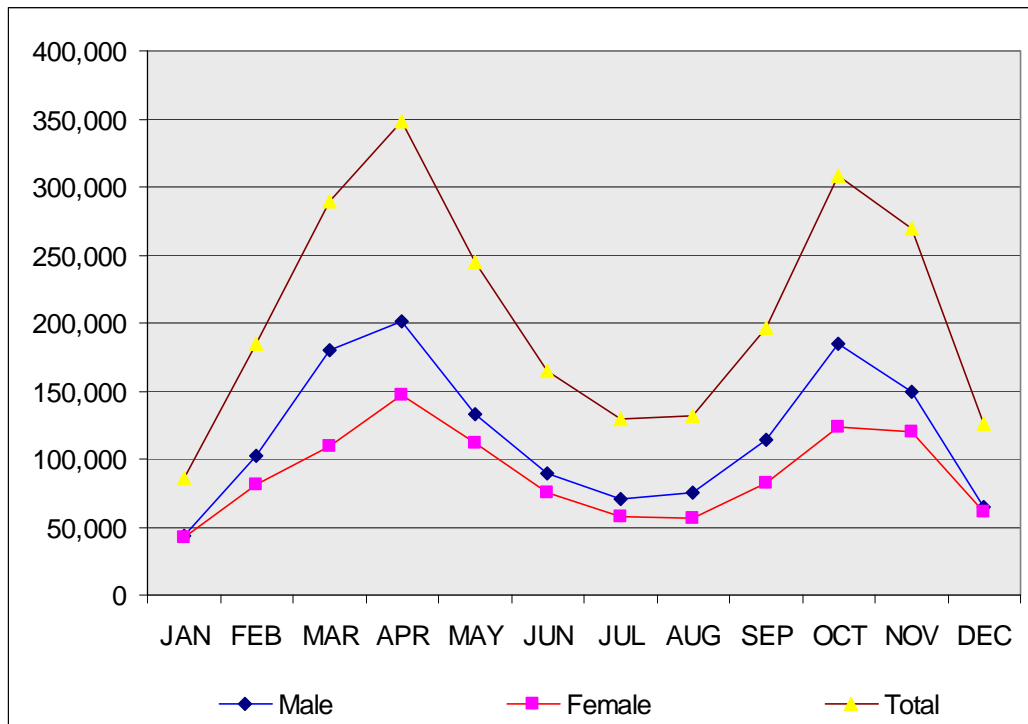
SECTION 3

All Cattle Movements by Month and by Type



Month	Mart	Farm to Farm	Total
January	43,187	42,889	86,076
February	111,734	72,415	184,149
March	171,925	117,851	289,776
April	217,010	131,540	348,550
May	149,635	95,077	244,712
June	102,450	62,206	164,656
July	84,420	44,820	129,240
August	93,358	38,091	131,449
September	147,586	48,569	196,155
October	241,322	66,835	308,157
November	192,498	77,370	269,868
December	72,658	52,861	125,519
Total	1,627,783	850,524	2,478,307

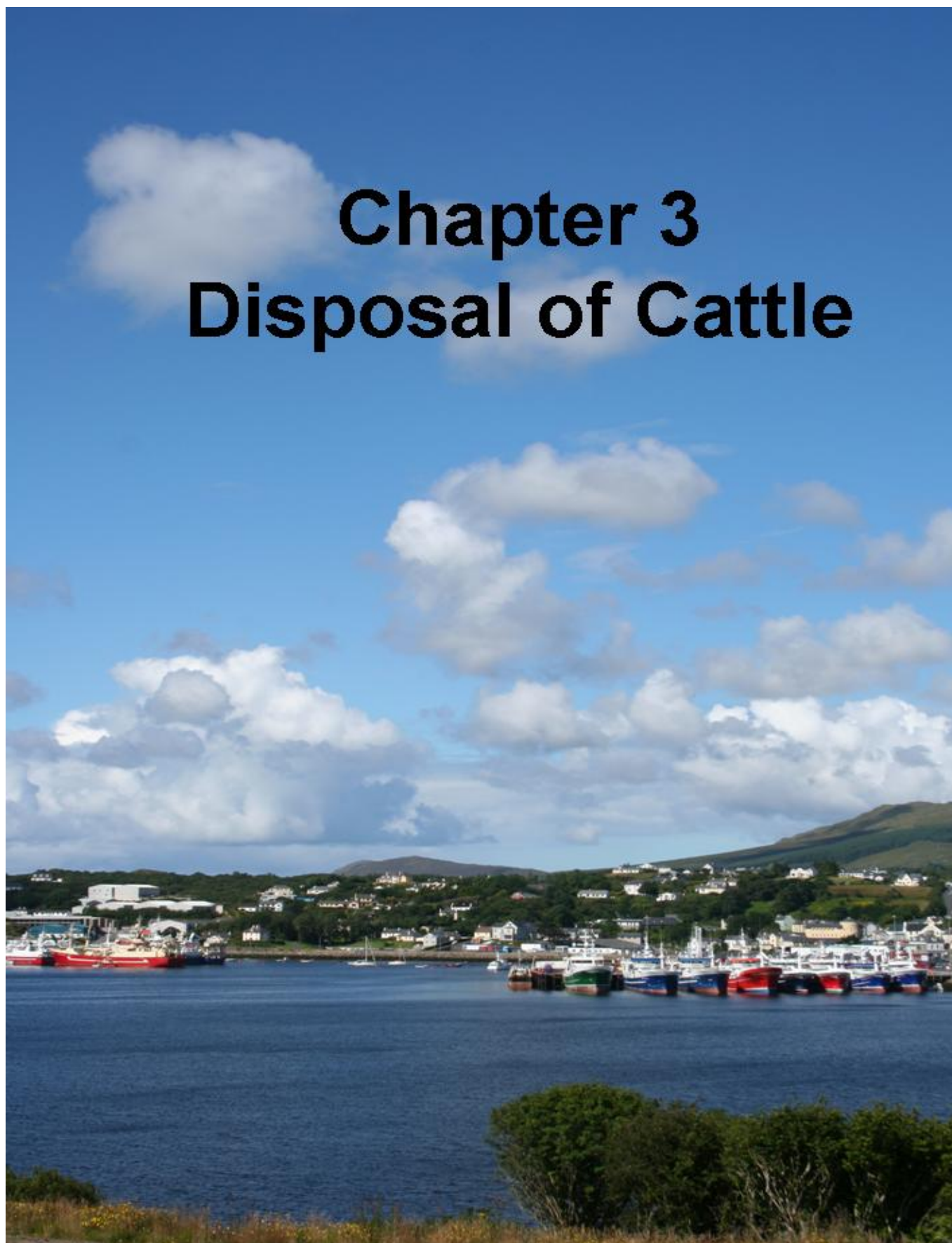
All Cattle Movements by Month and by Gender



Month	Male	Female	Total
January	43,812	42,264	86,076
February	102,561	81,588	184,149
March	180,084	109,692	289,776
April	201,113	147,437	348,550
May	133,235	111,477	244,712
June	89,454	75,202	164,656
July	71,032	58,208	129,240
August	75,408	56,041	131,449
September	113,562	82,593	196,155
October	184,359	123,798	308,157
November	149,645	120,223	269,868
December	64,152	61,367	125,519
Total	1,408,417	1,069,890	2,478,307

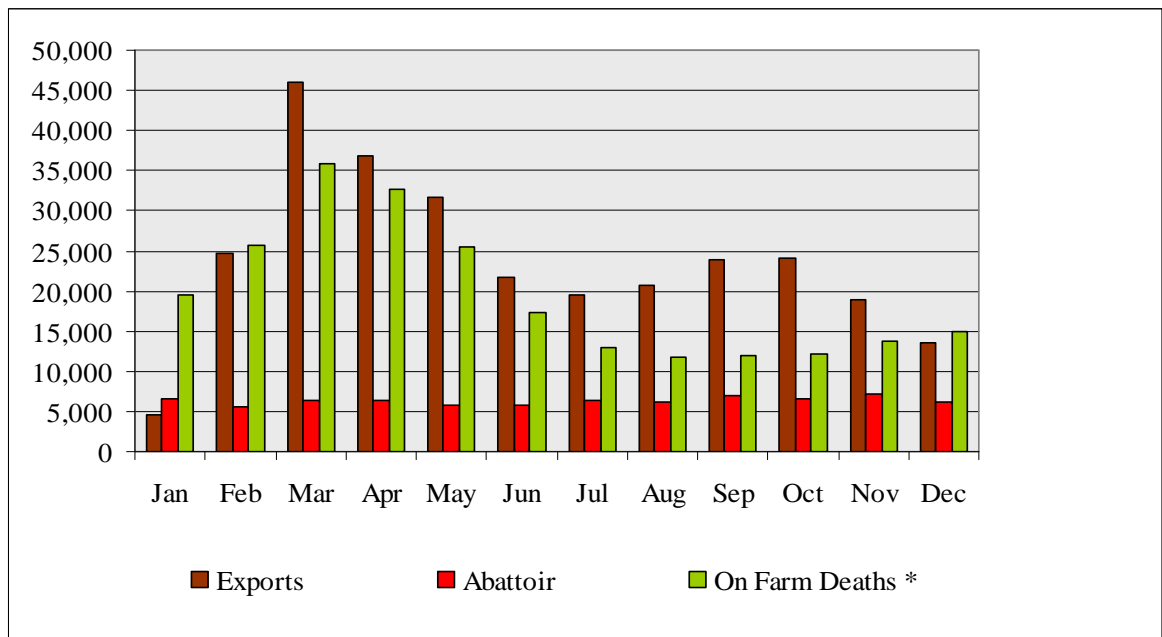
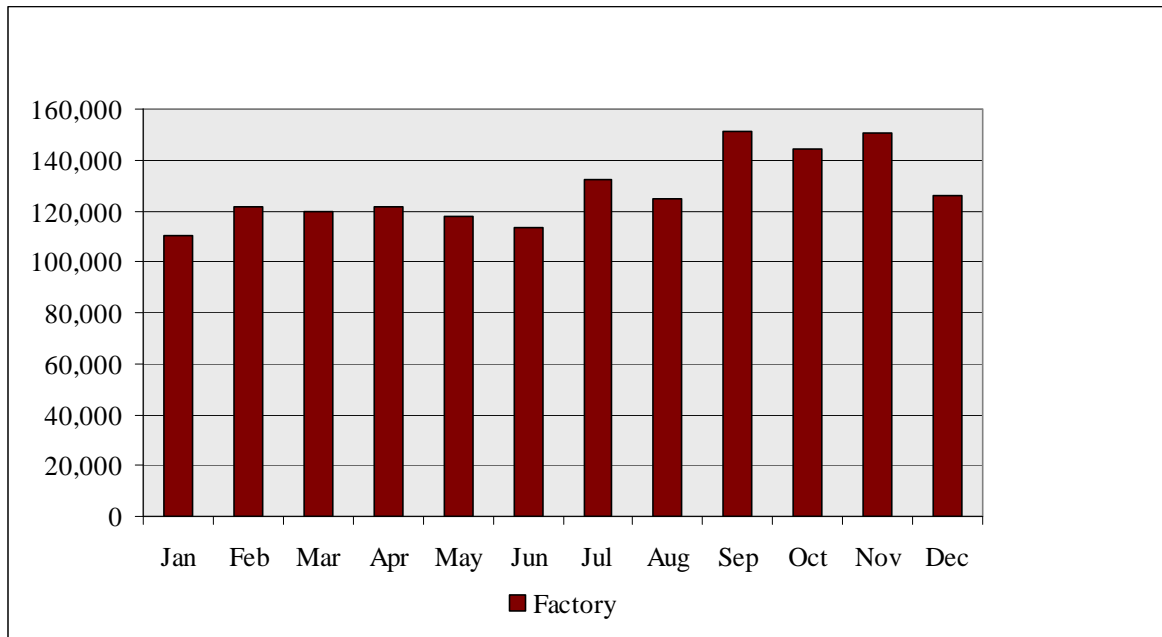
Chapter 3

Disposal of Cattle



SECTION 1

Overall Summary of Cattle Disposals and On Farm Deaths - Graphs



* Including Stillborn Animals

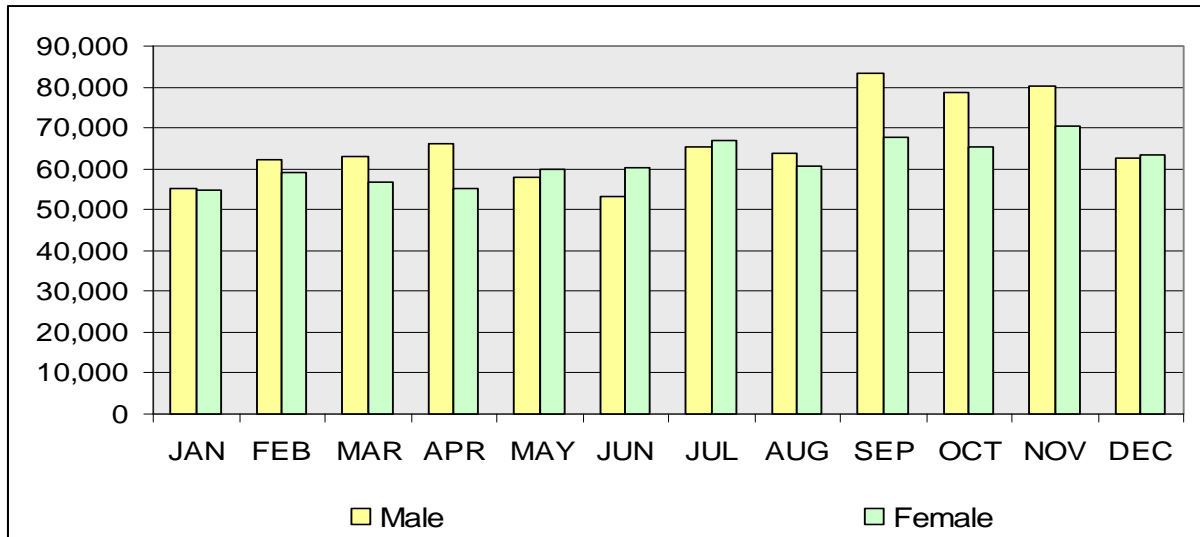
Overall Summary of Cattle Disposals and On Farm Deaths - Figures

Month	Factory	Exports	Abattoir	On Farm Deaths **	Stillborn	Total
January	109,984	4,582	6,626	19,560	3,519	144,271
February	121,515	24,655	5,673	25,774	6,799	184,416
March	119,961	45,990	6,410	35,879	7,356	215,596
April	121,292	36,891	6,335	32,611	4,104	201,233
May	117,849	31,645	5,768	25,441	1,849	182,552
June	113,311	21,807	5,854	17,293	770	159,035
July	132,142	19,534	6,332	13,034	395	171,437
August	124,714	20,628	6,132	11,781	396	163,651
September	150,913	24,002	6,945	11,922	564	194,346
October	144,055	24,090	6,624	12,149	581	187,499
November	150,567	19,000	7,155	13,802	677	191,201
December	125,971	13,469	6,099	14,842	876	161,257
Total	1,532,274	286,293	75,953	234,088	27,886	2,156,494

** Excluding Stillborn Animals

SECTION 2

Cattle Disposals in Department approved Slaughter Plants by Month and by Gender



Month	Male	Female	Total
January	55,061	54,923	109,984
February	62,364	59,151	121,515
March	63,091	56,870	119,961
April	66,050	55,242	121,292
May	57,991	59,858	117,849
June	53,184	60,127	113,311
July	65,283	66,859	132,142
August	63,973	60,741	124,714
September	83,346	67,585	150,931
October	78,750	65,305	144,055
November	80,267	70,302	150,569
December	62,580	63,391	125,971
Total	791,940	740,354	1,532,294

Age Profile of Slaughtering in Department approved plants for Beef Cattle by Month and by Gender

For the purposes of this Table, Beef Cattle are defined as the progeny of bulls of a Beef Breed

Month	0 - 12 mts		12 - 18 mts		18 - 24 mts		24 - 30 mts		30 - 48 mts		48mts +		Total
	M	F	M	F	M	F	M	F	M	F	M	F	
January	532	332	1,595	823	19,179	20,802	5,132	3,892	16,994	8,343	541	9,939	88,104
February	484	386	1,841	1,089	21,891	21,755	7,917	6,211	16,450	7,319	649	10,088	96,080
March	246	166	2,021	912	19,004	17,475	13,920	10,843	13,235	5,662	687	7,852	92,023
April	308	220	3,201	1,357	13,253	10,472	22,069	15,807	12,607	5,185	894	7,749	93,122
May	256	196	5,426	1,852	8,735	6,326	21,280	17,428	9,576	5,163	1,102	10,320	87,660
June	222	159	7,025	2,127	5,779	3,539	20,230	17,370	9,080	4,892	1,120	13,386	84,929
July	188	139	6,697	2,845	4,821	3,578	29,219	21,477	11,898	5,932	1,384	14,284	102,462
August	145	136	4,319	2,482	4,279	3,780	30,245	17,667	12,774	5,963	1,361	14,085	97,236
September	163	216	3,041	2,824	5,762	6,137	33,729	16,256	25,183	8,823	1,570	16,605	120,309
October	138	192	1,940	1,986	7,272	8,684	22,141	11,372	32,841	11,749	1,274	16,435	116,024
November	127	151	1,189	1,390	10,135	13,795	13,992	8,015	40,142	14,490	1,371	18,338	123,135
December	150	148	1,290	988	14,762	18,093	7,053	5,656	26,423	13,174	936	13,866	102,539
Total	2,959	2,441	39,585	20,675	134,872	134,436	226,927	151,994	227,203	96,695	12,889	152,947	1,203,623

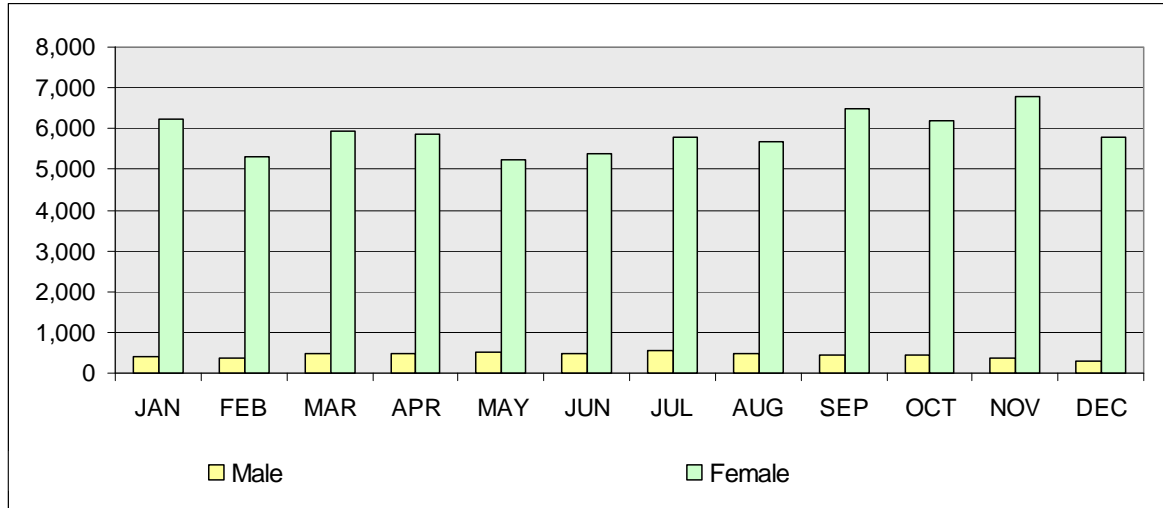
Age Profile of Slaughterings in Department approved plants for Dairy Cattle by Month and by Gender

For the purposes of this Table, Dairy Cattle are defined as the progeny of Bulls of a Dairy Breed

Month	0 - 12 mts		12 - 18 mts		18 - 24 mts		24 - 30 mts		30 - 48 mts		48 mts +		Total
	M	F	M	F	M	F	M	F	M	F	M	F	
January	198	14	124	14	5,754	448	1,753	179	3,196	1,731	63	8,406	21,880
February	442	16	220	17	4,622	392	4,962	477	2,780	1,686	106	9,715	25,435
March	642	21	185	19	2,455	259	8,698	767	1,871	1,609	127	11,285	27,938
April	124	18	346	65	1,455	168	9,662	1,037	2,024	1,674	107	11,490	28,170
May	166	24	744	49	919	101	7,955	1,022	1,666	1,740	166	15,637	30,189
June	84	25	1,365	50	911	64	5,592	954	1,660	1,598	116	15,963	28,382
July	301	68	1,032	92	652	49	6,779	1,125	2,121	1,904	191	15,366	29,680
August	370	23	667	80	1,092	108	4,590	675	3,987	1,966	144	13,776	27,478
September	437	76	309	46	1,697	155	3,300	436	7,983	2,313	172	13,698	30,622
October	309	21	201	22	2,341	142	1,751	261	8,361	2,306	181	12,135	28,031
November	311	18	107	20	2,971	296	1,363	199	8,434	2,107	125	11,483	27,434
December	352	61	147	38	4,945	332	1,045	131	5,384	1,877	93	9,027	23,432
Total	3,736	385	5,447	512	29,814	2,514	57,450	7,263	49,467	22,511	1,591	147,981	328,671

SECTION 3

Cattle Disposals in Local Authority approved Slaughter Plants by Month and by Gender



Month	Male	Female	Total
January	414	6,212	6,626
February	375	5,298	5,673
March	464	5,946	6,410
April	473	5,862	6,335
May	518	5,250	5,768
June	488	5,366	5,854
July	540	5,792	6,332
August	462	5,670	6,132
September	456	6,489	6,945
October	435	6,189	6,624
November	384	6,771	7,155
December	298	5,801	6,099
Total	5,307	70,646	75,953

Age Profile of Slaughterings in Local Authority approved Slaughter Plants for Beef Cattle by Month and by Gender

For the purposes of this Table, Beef Cattle are defined as the progeny of bulls of a Beef Breed

Month	0 - 12 mts		12 -18 mts		18 - 24 mts		24 - 30 mts		30 - 48 mts		48 mts +		Total
	M	F	M	F	M	F	M	F	M	F	M	F	
January	28	239	25	411	252	4,669	45	425	39	389	0	0	6,522
February	33	221	29	406	182	3,754	67	586	31	249	0	0	5,558
March	44	239	65	697	176	3,275	119	1,393	28	249	0	0	6,285
April	32	219	127	1,122	98	1,988	155	2,262	17	186	0	0	6,206
May	23	162	151	1,342	87	1,181	198	2,278	22	198	0	0	5,642
June	41	139	148	1,738	63	812	171	2,339	24	247	0	0	5,722
July	33	225	166	1,916	67	730	216	2,612	25	231	0	0	6,221
August	27	319	108	1,758	44	959	202	2,292	39	280	0	0	6,028
September	51	463	97	1,652	82	1,900	150	1,946	45	467	0	0	6,853
October	48	536	55	1,061	111	2,680	113	1,197	76	654	0	0	6,531
November	46	456	69	736	102	3,608	49	924	72	949	0	0	7,011
December	26	220	32	538	115	3,639	44	569	62	755	0	0	6,000
Total	432	3,438	1,072	13,377	1,379	29,195	1,529	18,823	480	4,854	0	0	74,579

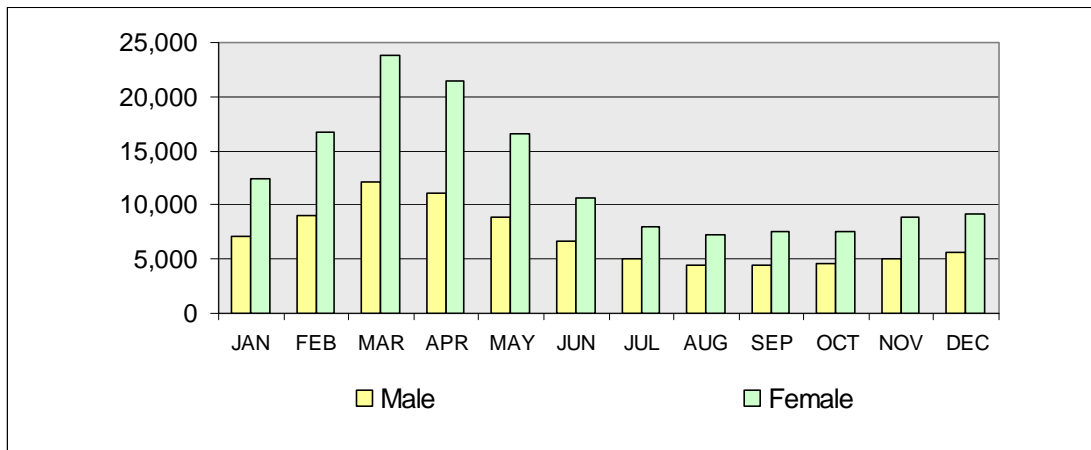
Age Profile of Slaughterings in Local Authority approved Slaughter Plants for Dairy Cattle by Month and by Gender

For the purposes of this Table, Dairy Cattle are defined as the progeny of bulls of a Dairy Breed

Month	0 - 12 mts		12 -18 mts		18 - 24 mts		24 - 30 mts		30 - 48 mts		48 mts +		Total
	M	F	M	F	M	F	M	F	M	F	M	F	
January	3	2	2	2	13	57	6	10	1	8	0	0	104
February	6	2	7	1	11	46	8	14	1	19	0	0	115
March	3	0	4	5	8	26	11	50	6	12	0	0	125
April	1	1	13	4	10	17	19	50	1	13	0	0	129
May	2	1	12	17	10	13	12	46	1	12	0	0	126
June	2	1	13	10	10	11	16	58	0	11	0	0	132
July	3	1	17	15	4	10	9	44	0	8	0	0	111
August	2	1	10	11	5	8	17	25	8	17	0	0	104
September	0	3	2	7	11	17	10	16	8	18	0	0	92
October	3	3	1	5	14	27	9	6	5	20	0	0	93
November	8	4	9	12	20	37	4	15	5	30	0	0	144
December	3	4	0	4	8	44	0	8	8	20	0	0	99
Total	36	23	90	93	124	313	121	342	44	188	0	0	1,374

SECTION 4

On Farm Deaths* by Month and by Gender



Month	Male	Female	Total
January	7,165	12,395	19,560
February	9,093	16,681	25,774
March	12,092	23,787	35,879
April	11,156	21,455	32,611
May	8,863	16,578	25,441
June	6,702	10,591	17,293
July	5,081	7,953	13,034
August	4,486	7,295	11,781
September	4,398	7,524	11,922
October	4,636	7,513	12,149
November	4,981	8,821	13,802
December	5,669	9,173	14,842
Total	84,322	149,766	234,088

* Excludes stillborn animals

Age Profile of On Farm Deaths for Male Beef Cattle by Month

For the purposes of this Table, Beef Cattle are defined as the progeny of bulls of a Beef Breed

Month	0 - 6 wks	6 wks - 6 Mts	6 - 12 Mts	12 - 18 Mts	18 - 24 Mts	24 - 30 Mts	30 - 48 Mts	48 Mts +	Total
January	1,213	751	1,615	214	431	79	216	108	4,627
February	2,038	624	1,193	238	406	85	179	108	4,871
March	4,050	656	1,096	392	379	142	199	115	7,029
April	4,042	1,096	803	517	303	216	155	108	7,240
May	2,558	1,761	419	624	167	238	127	96	5,990
June	1,341	1,961	337	590	120	190	88	87	4,714
July	548	1,791	245	562	81	198	76	86	3,587
August	304	1,389	321	597	115	169	95	65	3,055
September	287	1,084	501	541	202	158	103	78	2,954
October	287	870	876	363	360	125	163	76	3,120
November	309	730	1,346	264	422	91	190	72	3,424
December	421	791	1,620	253	480	83	211	88	3,947
Total	17,398	13,504	10,372	5,155	3,466	1,774	1,802	1,087	54,558

Age Profile of On Farm Deaths for Female Beef Cattle by Month

For the purposes of this Table, Beef Cattle are defined as the progeny of bulls of a Beef Breed

Month	0 - 6 wks	6 wks - 6 Mts	6 - 12 Mts	12 - 18 Mts	18 - 24 Mts	24 - 30 Mts	30 - 48 Mts	48 Mts +	Total
January	962	558	1,122	150	391	109	621	2,296	6,209
February	1,499	506	951	198	362	111	705	3,047	7,379
March	3,149	589	835	334	432	249	1,074	4,951	11,613
April	3,162	858	494	457	367	338	911	4,930	11,517
May	1,978	1,433	327	536	246	378	636	3,651	9,185
June	1,000	1,648	219	505	129	308	405	1,806	6,020
July	385	1,550	205	492	93	241	244	1,235	4,445
August	223	1,281	268	426	146	222	258	1,312	4,136
September	223	994	447	405	206	206	324	1,480	4,285
October	185	756	689	300	290	154	407	1,559	4,340
November	233	613	1,033	214	361	103	463	2,026	5,046
December	352	537	1,156	148	375	79	451	1,690	4,788
Total	13,351	11,323	7,746	4,165	3,398	2,498	6,499	29,983	78,963

Age Profile of On Farm Deaths for Male Dairy Cattle by Month

For the purposes of this Table, Dairy Cattle are defined as the progeny of bulls of a Dairy Breed

Month	0 - 6 wks	6 wks - 6 Mts	6 - 12 Mts	12 - 18 Mts	18 - 24 Mts	24 - 30 Mts	30 - 48 Mts	48 Mts +	Total
January	1,120	414	616	85	199	34	56	14	2,538
February	3,013	337	412	175	133	86	54	12	4,222
March	3,478	694	264	351	75	111	71	19	5,063
April	1,948	1,255	214	290	52	105	36	16	3,916
May	869	1,430	108	279	46	92	41	8	2,873
June	382	1,208	109	182	14	52	29	12	1,988
July	168	941	133	153	22	39	31	7	1,494
August	126	708	336	104	66	47	40	4	1,431
September	227	409	544	85	112	22	42	3	1,444
October	354	264	585	74	165	25	42	7	1,516
November	368	190	652	70	196	15	59	7	1,557
December	396	234	707	90	193	22	68	12	1,722
Total	12,449	8,084	4,680	1,938	1,273	650	569	121	29,764

Age Profile of On Farm Deaths for Female Dairy Cattle by Month

For the purposes of this Table, Dairy Cattle are defined as the progeny of bulls of a Dairy Breed

Month	0 - 6 wks	6 wks - 6 Mts	6 - 12 Mts	12 - 18 Mts	18 - 24 Mts	24 - 30 Mts	30 - 48 Mts	48 Mts +	Total
January	864	197	401	61	228	73	913	3,449	6,186
February	2,059	158	250	148	293	307	1,174	4,913	9,302
March	2,325	476	204	200	268	599	1,329	6,773	12,174
April	1,417	816	123	251	109	485	878	5,859	9,938
May	586	1,072	89	174	65	409	557	4,441	7,393
June	297	949	77	173	26	223	343	2,483	4,571
July	101	1,036	79	154	26	176	254	1,682	3,508
August	112	694	239	110	93	123	292	1,496	3,159
September	143	457	396	70	95	72	377	1,629	3,239
October	221	230	446	73	158	63	367	1,615	3,173
November	259	204	515	61	183	42	446	2,065	3,775
December	276	191	607	59	239	43	587	2,383	4,385
Total	8,660	6,480	3,426	1,534	1,783	2,615	7,517	38,788	70,803

SECTION 5

Stillborn Calves by Month and by Gender

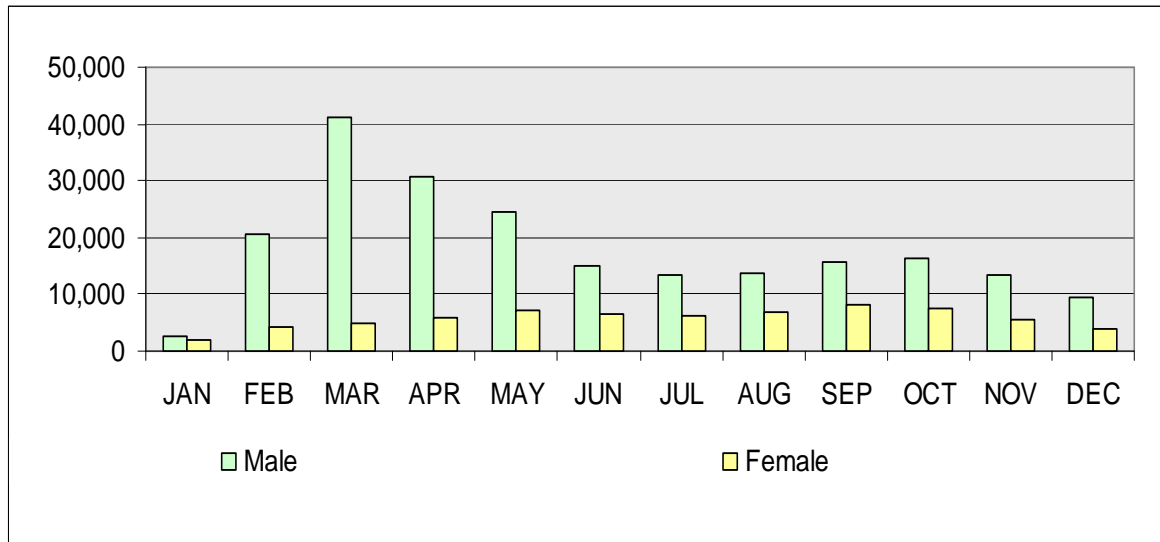
Month	Male	Female	Total
January	1,986	1,533	3,519
February	3,958	2,841	6,799
March	4,322	3,034	7,356
April	2,447	1,657	4,104
May	1,113	736	1,849
June	496	274	770
July	244	151	395
August	218	178	396
September	312	252	564
October	368	213	581
November	409	268	677
December	523	353	876
Total	16,396	11,490	27,886

Stillborn Calves by Month, Gender and Sire

Month	Calves from a Beef bull			Calves from a Dairy bull			Overall
	Male	Female	Total	Male	Female	Total	Total
January	807	590	1,397	1,179	943	2,122	3,519
February	1,866	1,350	3,216	2,092	1,491	3,583	6,799
March	2,979	2,128	5,107	1,343	906	2,249	7,356
April	1,928	1,286	3,214	519	371	890	4,104
May	939	594	1,533	174	142	316	1,849
June	426	235	661	70	39	109	770
July	203	127	330	41	24	65	395
August	157	121	278	61	57	118	396
September	209	149	358	103	103	206	564
October	210	126	336	158	87	245	581
November	244	158	402	165	110	275	677
December	297	190	487	226	163	389	876
Total	10,265	7,054	17,319	6,131	4,436	10,567	27,886

SECTION 6

Live Exports by Month and by Gender



Month	Male	Female	Total
January	2,710	1,872	4,582
February	20,435	4,220	24,655
March	41,091	4,899	45,990
April	30,877	6,014	36,891
May	24,543	7,102	31,645
June	15,169	6,638	21,807
July	13,276	6,258	19,534
August	13,657	6,971	20,628
September	15,678	8,324	24,002
October	16,454	7,636	24,090
November	13,441	5,559	19,000
December	9,605	3,864	13,469
Total	216,936	69,357	286,293

Age Profile of Live Exports for Beef Cattle by Month and by Gender

For the purpose of this Table, Beef Cattle are defined as the progeny of bulls of a Beef Breed

Month	0 - 6 wks		6 wks - 6 Mts		6 - 12 Mts		12 - 18 Mts		18 - 24 Mts		24 - 30 Mts		30 Mts +		Total
	M	F	M	F	M	F	M	F	M	F	M	F	M	F	
January	7	4	9	2	1,048	924	219	174	363	395	94	40	230	220	3,729
February	131	64	17	8	2,437	1,533	661	440	1,438	1,153	345	184	697	522	9,630
March	1,057	738	72	35	3,128	1,236	1,336	661	1,587	871	731	374	613	658	13,097
April	2,082	1,142	153	81	2,191	768	1,994	1,086	927	718	1,123	857	540	753	14,415
May	4,865	1,902	458	251	1,896	643	2,253	1,459	572	448	1,240	894	357	897	18,135
June	3,759	2,172	771	367	1,234	520	2,082	1,751	252	282	578	548	142	573	15,031
July	1,582	828	600	333	2,118	723	2,968	1,816	500	239	1,452	767	442	1,095	15,463
August	598	330	415	259	3,340	1,228	3,300	1,805	844	339	2,117	1,026	715	1,253	17,569
September	181	49	686	462	5,870	2,335	2,555	1,827	1,197	1,040	2,287	769	789	1,063	21,110
October	67	18	638	354	6,489	2,588	1,776	1,237	1,674	1,223	1,032	431	760	797	19,084
November	40	6	370	182	5,970	2,132	894	596	1,519	993	722	372	511	625	14,932
December	45	2	171	73	3,988	1,377	645	328	836	884	292	256	566	626	10,089
Total	14,414	7,255	4,360	2,407	39,709	16,007	20,683	13,180	11,709	8,585	12,013	6,518	6,362	9,082	172,284

Age Profile of Live Exports for Dairy Cattle by Month and by Gender

For the purpose of this Table, Dairy Cattle are defined as the progeny of bulls of a Dairy Breed

Month	0 - 6 wks		6 wks - 6 Mts		6 - 12 Mts		12 - 18 Mts		18 - 24 Mts		24 - 30 Mts		30 Mts +		Total
	M	F	M	F	M	F	M	F	M	F	M	F	M	F	
January	421	0	147	0	2	0	5	0	98	14	24	4	43	95	853
February	13,996	23	256	1	11	18	11	1	233	80	124	104	78	89	15,025
March	31,208	85	770	3	8	3	15	3	154	23	292	53	120	156	32,893
April	18,845	88	2,092	17	3	13	111	131	127	40	570	82	119	238	22,476
May	10,103	166	2,001	37	4	4	231	44	42	23	419	71	102	263	13,510
June	4,428	180	1,666	34	19	3	50	39	14	3	134	22	40	144	6,776
July	1,729	62	969	20	35	1	295	13	90	0	382	27	114	334	4,071
August	683	18	568	13	118	6	170	39	198	26	379	143	212	486	3,059
September	911	3	289	21	259	7	45	37	224	270	128	87	257	354	2,892
October	2,961	12	184	6	307	18	21	67	219	490	80	59	246	336	5,006
November	2,601	7	225	5	366	10	25	7	123	311	35	26	40	287	4,068
December	2,277	4	341	5	165	4	26	6	146	127	45	32	62	140	3,380
TOTAL	90,163	648	9,508	162	1,297	87	1,005	387	1,668	1,407	2,612	710	1,433	2,922	114,009

Destination of Live Exports

Country	Male	Female	Total
NORTHERN IRELAND	45,675	33,828	79,503
NETHERLANDS	66,251	2,356	68,607
ITALY	40,223	15,840	56,063
SPAIN	38,498	10,051	48,549
BELGIUM	18,472	547	19,019
UK *	6,046	4,010	10,056
FRANCE	1,709	94	1,803
GREECE	1,097	0	1,097
HUNGARY	745	0	745
MALTA	52	174	226
ROMANIA	185	4	189
DENMARK	0	8	8
GERMANY	1	0	1
Total EU	218,954	66,912	285,866

ALBANIA	0	176	176
KOSOVO	0	164	164
RWANDA	0	69	69
ISRAEL	18	0	18
Total Non -EU	18	409	427

Total	218,972	67,321	286,293
--------------	----------------	---------------	----------------

* excluding Northern Ireland

Age Profile of Live Exports by Breed

Breed	0 - 6 wks	6 wks - 6 Mts	6 - 12 Mts	12 - 18 Mts	18 - 24 Mts	24 - 30 Mts	30 Mts +	Total
FR	89,020	9,317	1,258	1,222	2,838	3,121	4,016	110,792
LM	1,995	1,528	19,745	12,330	6,010	5,611	5,100	52,319
CH	301	1,383	18,045	11,947	8,490	6,429	4,575	51,170
BB	4,086	957	13,368	5,563	1,740	1,040	1,036	27,790
AA	8,087	1,548	888	1,176	1,497	2,175	1,563	16,934
HE	5,723	746	287	396	922	1,591	1,099	10,764
Other *	2,618	697	1,829	1,427	853	789	1,091	9,304
SI	650	261	1,680	1,194	1,019	1,097	1,319	7,220
Total	112,480	16,437	57,100	35,255	23,369	21,853	19,799	286,293

FR: Friesian
SI: Simmental

HE: Hereford
AA: Aberdeen Angus

CH: Charolais
BB: Belgian Blue

LM: Limousin

* For full list of breeds see Appendix

Destination of Live Exports by Age

Country	0 - 6 wks	6 wks - 6 Mts	6 - 12 Mts	12 - 18 Mts	18 - 24 Mts	24 - 30 Mts	30 Mts +	Total
NORTHERN IRELAND	6,557	2,711	6,268	9,692	16,629	19,604	18,042	79,503
NETHERLANDS	65,828	2,734	0	0	0	1	44	68,607
ITALY	1,680	926	32,473	17,605	2,978	316	85	56,063
SPAIN	18,650	8,551	15,985	5,151	209	2	1	48,549
BELGIUM	17,762	963	13	8	18	24	231	19,019
UK *	481	428	644	2,290	3,246	1,713	1,254	10,056
FRANCE	1,506	86	127	22	10	8	44	1,803
GREECE	0	15	842	221	19	0	0	1,097
HUNGARY	0	9	533	202	1	0	0	745
MALTA	0	3	46	23	65	65	24	226
ROMANIA	0	8	169	10	2	0	0	189
DENMARK	0	0	0	6	2	0	0	8
GERMANY	0	1	0	0	0	0	0	1
Total EU	112,464	16,435	57,100	35,230	23,179	21,733	19,725	285,866
ALBANIA	0	0	0	6	99	60	11	176
KOSOVO	0	0	0	18	55	47	44	164
RWANDA	0	0	0	1	36	13	19	69
ISRAEL	16	2	0	0	0	0	0	18
Total Non-EU	16	2	0	25	190	120	74	427
Total	112,480	16,437	57,100	35,255	23,369	21,853	19,799	286,293

* excluding Northern Ireland



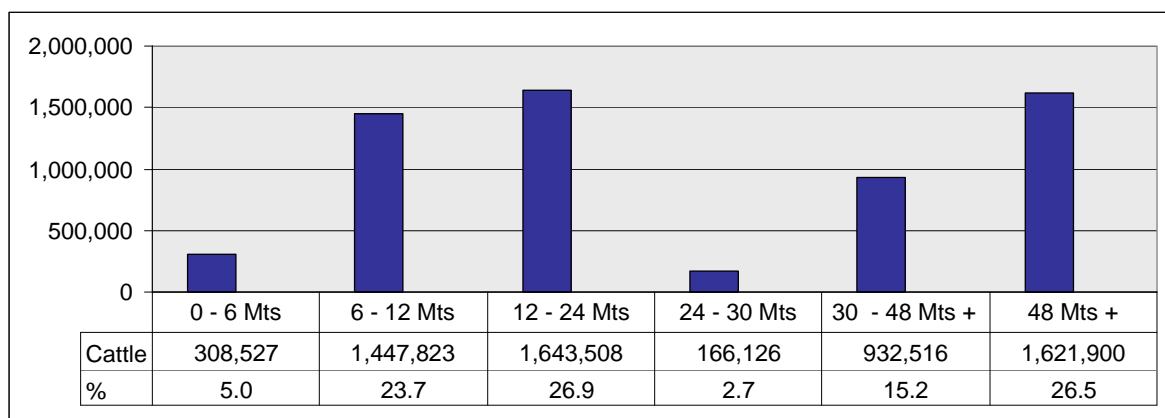
Chapter 4 National Herd Data.

SECTION 1

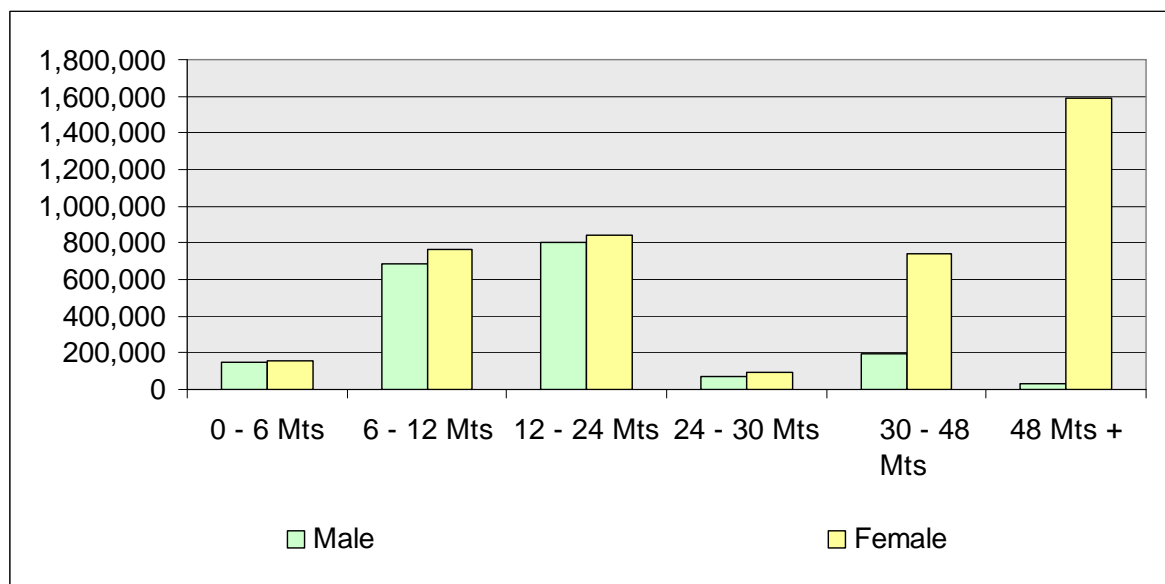
Age Profile of Live Herd at 31/12/2009 by Gender

Gender	0 - 6 Mts	6 - 12 Mts	12 - 24 Mts	24 - 30 Mts	30 - 48 Mts	48 Mts +	Total
Male	150,990	687,372	799,972	72,736	191,950	30,132	1,933,152
Female	157,537	760,451	843,536	93,390	740,566	1,591,768	4,187,248
Total	308,527	1,447,823	1,643,508	166,126	932,516	1,621,900	6,120,400

Cattle Population by Age



Cattle Population by Age and Gender



SECTION 2

Age Profile of Live Herd at 31/12/2009 by County

County	0 - 6 Mts	6 - 12 Mts	12 - 24 Mts	24 - 30 Mts	30 - 48 Mts	48 Mts +	Total	% of Total
CARLOW	6,625	20,472	27,750	3,883	12,979	21,850	93,559	1.5
CAVAN	11,501	50,350	51,961	6,324	33,468	63,434	217,038	3.5
CLARE	13,052	63,193	55,487	4,797	37,850	81,044	255,423	4.2
CORK	35,361	223,933	239,650	18,420	145,241	248,720	911,325	14.9
DONEGAL	10,913	43,987	49,508	4,384	23,776	47,612	180,180	2.9
DUBLIN	1,794	3,881	6,383	1,123	3,735	4,997	21,913	0.4
GALWAY	20,806	92,766	98,726	10,624	57,662	106,889	387,473	6.3
KERRY	14,639	68,543	66,782	5,028	50,104	95,342	300,438	4.9
KILDARE	6,942	20,524	34,236	5,892	18,930	23,434	109,958	1.8
KILKENNY	12,178	77,822	89,121	7,123	44,139	69,228	299,611	4.9
LAOIS	12,401	48,517	68,657	7,602	31,667	49,006	217,850	3.6
LEITRIM	5,397	17,471	13,149	1,822	10,008	26,226	74,073	1.2
LIMERICK	12,746	85,353	90,673	6,077	55,532	95,311	345,692	5.6
LONGFORD	6,087	24,973	29,148	3,610	16,555	29,860	110,233	1.8
LOUTH	5,743	14,464	23,842	4,033	12,050	18,568	78,700	1.3
MAYO	13,520	62,406	60,291	5,885	37,467	76,334	255,903	4.2
MEATH	16,522	49,450	75,928	12,936	42,714	61,285	258,835	4.2
MONAGHAN	11,165	44,373	53,566	6,153	28,090	50,025	193,372	3.2
OFFALY	11,628	48,804	68,210	7,353	29,583	41,810	207,388	3.4
ROSCOMMON	10,446	44,091	48,292	5,399	27,275	50,951	186,454	3.0
SLIGO	5,726	25,643	22,982	2,325	14,350	33,388	104,414	1.7
TIPPERARY	20,419	143,061	161,759	11,121	84,606	129,219	550,185	9.0
WATERFORD	9,238	56,017	58,419	4,281	32,836	56,615	217,406	3.6
WESTMEATH	10,094	41,906	54,837	6,812	31,522	44,670	189,841	3.1
WEXFORD	14,029	53,896	66,732	7,942	34,844	64,549	241,992	4.0
WICKLOW	9,555	21,927	27,419	5,177	15,533	31,533	111,144	1.8
Total	308,527	1,447,823	1,643,508	166,126	932,516	1,621,900	6,120,400	

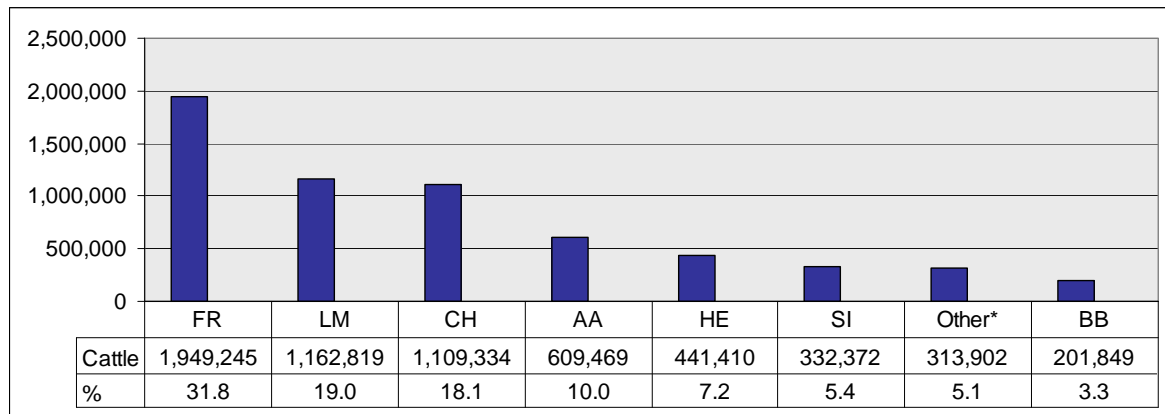
SECTION 3

Age Profile of Live Herd at 31/12/2009 by Breed

Breed	0 - 6 Mts	6 - 12 Mts	12 - 24 Mts	24 - 30 Mts	30 Mts +	48 Mts +	Total	% of Total
FR	58,201	388,876	386,703	38,034	371,966	705,465	1,949,245	31.8
LM	81,690	282,133	347,764	39,901	160,681	250,650	1,162,819	19.0
CH	72,700	300,921	343,535	36,623	138,654	216,901	1,109,334	18.1
AA	30,216	180,874	208,215	15,971	72,016	102,177	609,469	10.0
HE	17,578	119,083	144,431	10,695	55,677	93,946	441,410	7.2
SI	15,643	60,911	81,797	10,160	51,428	112,433	332,372	5.4
Other *	14,073	67,205	74,194	8,143	56,263	94,024	313,902	5.1
BB	18,426	47,820	56,869	6,599	25,831	46,304	201,849	3.3
Total	308,527	1,447,823	1,643,508	166,126	932,516	1,621,900	6,120,400	

FR: Friesian LM: Limousin CH: Charolais
 AA: Aberdeen Angus HE: Hereford SI: Simmental
 BB: Belgian Blue

* For a full list of breed codes see Appendix



SECTION 4

Age Profile of Live Herd at 31/12/2009 by County and by Breed

County	FR	HE	CH	LM	SI	AA	BB	Other *	Total
CARLOW	22,674	4,690	17,887	26,728	5,306	8,195	4,825	3,254	93,559
CAVAN	54,531	12,857	55,949	49,855	9,286	15,322	8,800	10,438	217,038
CLARE	43,007	22,846	57,720	85,211	9,771	11,489	10,672	14,707	255,423
CORK	496,678	75,481	60,393	64,787	37,466	113,244	12,781	50,495	911,325
DONEGAL	30,269	2,924	62,054	37,250	15,483	11,398	9,963	10,839	180,180
DUBLIN	4,932	1,710	5,347	4,004	1,770	1,818	977	1,355	21,913
GALWAY	44,467	29,281	99,767	124,219	25,975	31,794	16,488	15,482	387,473
KERRY	143,133	26,278	33,232	37,091	10,148	26,077	8,491	15,988	300,438
KILDARE	23,948	6,389	27,233	26,327	7,659	7,839	3,931	6,632	109,958
KILKENNY	117,824	22,848	41,766	51,278	18,663	30,308	5,778	11,146	299,611
LAOIS	58,942	14,065	42,026	49,742	14,958	19,007	7,955	11,155	217,850
LEITRIM	3,565	2,203	28,190	20,352	4,850	6,657	3,755	4,501	74,073
LIMERICK	161,937	42,468	26,543	38,337	9,268	42,406	6,483	18,250	345,692
LONGFORD	12,709	5,407	39,013	27,471	4,425	12,395	4,626	4,187	110,233
LOUTH	22,314	2,470	17,575	13,793	7,252	5,379	3,605	6,312	78,700
MAYO	28,563	7,038	66,476	67,160	21,816	37,880	13,346	13,624	255,903
MEATH	80,838	15,339	55,043	48,312	13,220	24,242	9,882	11,959	258,835
MONAGHAN	55,445	10,390	46,389	38,293	15,265	12,135	7,619	7,836	193,372
OFFALY	40,189	21,395	43,871	48,094	14,340	21,037	7,310	11,152	207,388
ROSCOMMON	9,043	5,670	64,778	52,225	14,693	23,432	9,570	7,043	186,454
SLIGO	12,728	1,940	26,742	24,133	8,592	16,262	6,703	7,314	104,414
TIPPERARY	223,391	59,547	63,105	83,835	24,711	55,987	9,637	29,972	550,185
WATERFORD	100,063	19,333	22,058	22,387	11,814	27,091	3,270	11,390	217,406
WESTMEATH	31,977	13,787	51,595	41,574	9,577	22,966	6,833	11,532	189,841
WEXFORD	94,278	9,966	31,336	54,025	9,936	18,734	12,869	10,848	241,992
WICKLOW	31,800	5,088	23,246	26,336	6,128	6,375	5,680	6,491	111,144
Total	1,949,245	441,410	1,109,334	1,162,819	332,372	609,469	201,849	313,902	6,120,400

FR: Friesian LM: Limousin CH: Charolais
AA: Aberdeen Angus HE: Hereford SI: Simmental
BB: Belgian Blue

* For a full list of breed codes see Appendix

SECTION 5

Profile of Herd Size at 31/12/2009

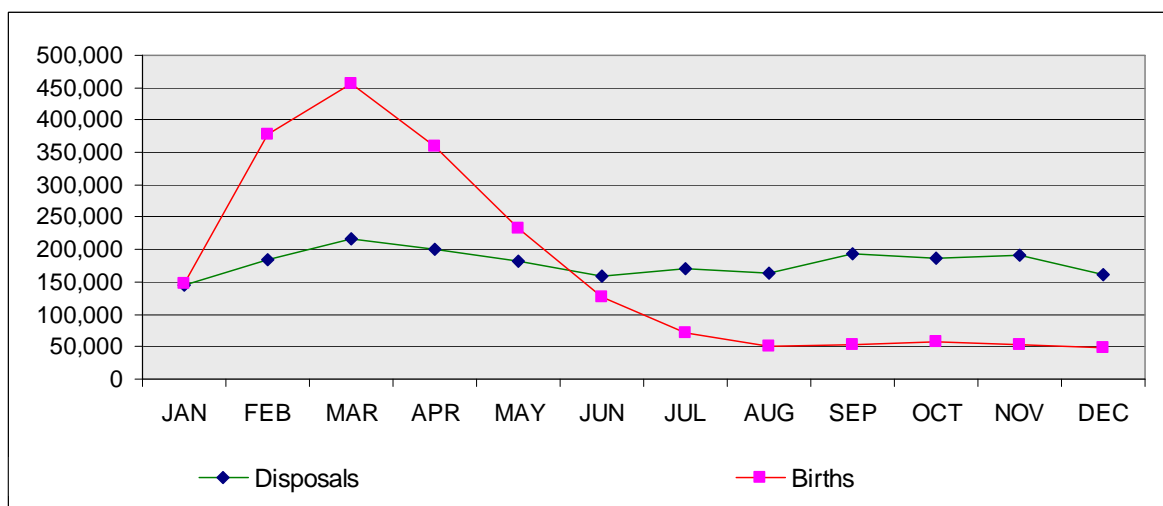
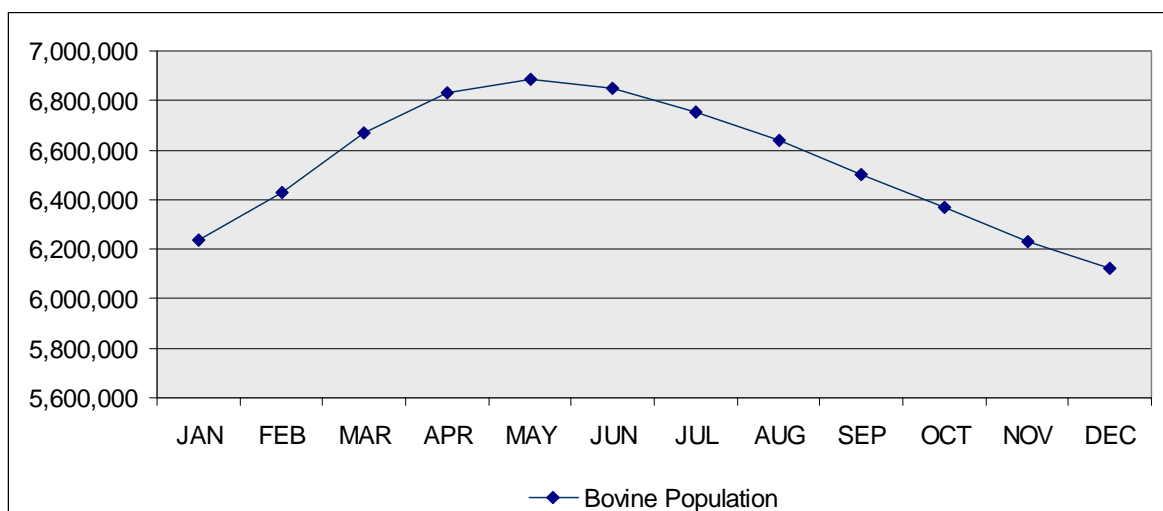
Country	Cattle	Herds	Av. Herd Size	< 25	25 - 49	50 - 74	75 - 99	100+
CARLOW	93,559	1,275	73	373	272	175	141	314
CAVAN	217,038	4,645	47	1,909	1,195	658	357	526
CLARE	255,423	5,817	44	2,376	1,609	834	444	554
CORK	911,325	11,357	80	3,028	2,180	1,559	1,262	3,328
DONEGAL	180,180	5,197	35	3,201	980	455	181	380
DUBLIN	21,913	348	63	147	85	29	15	72
GALWAY	387,473	11,025	35	5,627	2,880	1,244	598	676
KERRY	300,438	6,242	48	2,800	1,390	781	469	802
KILDARE	109,958	1,643	67	614	316	210	149	354
KILKENNY	299,611	3,004	100	573	496	396	324	1,215
LAOIS	217,850	2,672	82	673	538	416	257	788
LEITRIM	74,073	2,952	25	1,918	690	207	58	79
LIMERICK	345,692	5,067	68	1,599	1,089	703	490	1,186
LONGFORD	110,233	2,315	48	922	630	324	186	253
LOUTH	78,700	1,078	73	384	213	126	94	261
MAYO	255,903	9,108	28	5,581	2,229	726	281	291
MEATH	258,835	3,294	79	1,068	679	427	277	843
MONAGHAN	193,372	3,991	49	1,562	1,038	550	339	502
OFFALY	207,388	2,954	70	840	652	454	318	690
ROSCOMMON	186,454	5,137	36	2,429	1,536	595	299	278
SLIGO	104,414	3,431	30	2,010	847	290	133	151
TIPPERARY	550,185	6,375	86	1,517	1,146	976	688	2,048
WATERFORD	217,406	2,120	103	446	315	257	241	861
WESTMEATH	189,841	2,841	67	877	671	439	243	611
WEXFORD	241,992	2,902	83	674	567	423	332	906
WICKLOW	111,144	1,513	74	469	336	194	129	385
Total	6,120,400	108,303	57	43,617	24,579	13,448	8,305	18,354

Imported Animals in the Live Herd at 31/12/2009

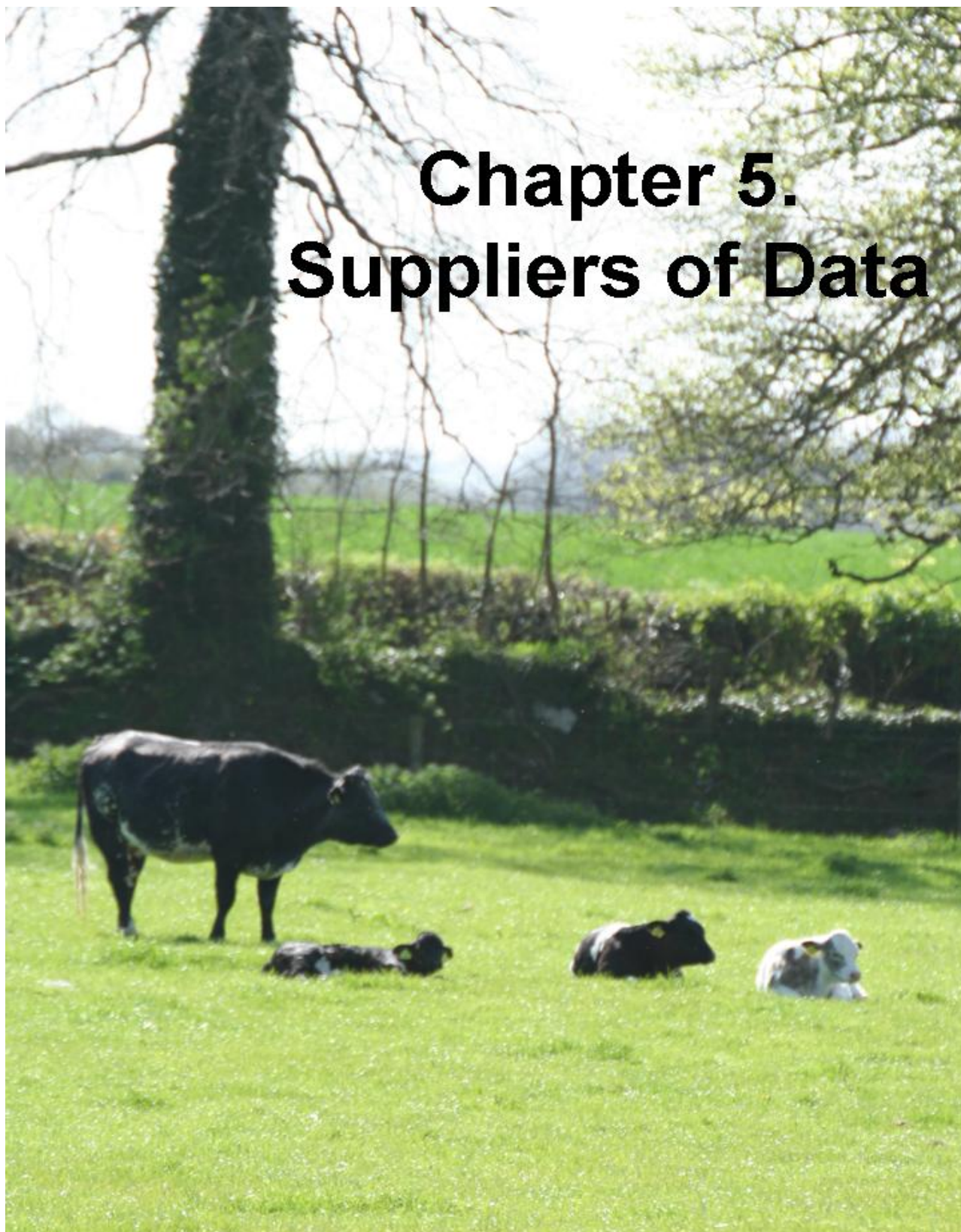
Country	Male	Female	Total
United Kingdom	3,387	3,259	6,646
France	310	3,253	3,563
Netherlands	22	573	595
Germany	8	397	405
Italy	14	288	302
Norway	0	299	299
Austria	0	282	282
Denmark	5	250	255
Belgium	130	53	183
Switzerland	0	108	108
Sweden	1	93	94
Romania	0	33	33
Canada	1	25	26
Total	3,878	8,913	12,791

Bovine Population 2009

	Population	Births	Imports	Disposals	Total	
Start Jan	6,230,773	148,116	1,422	144,271	6,236,040	End Jan
Start Feb	6,236,040	377,859	1,063	184,416	6,430,546	End Feb
Start Mar	6,430,546	455,137	1,250	215,596	6,671,337	End Mar
Start Apr	6,671,337	360,352	1,126	201,233	6,831,582	End Apr
Start May	6,831,582	233,559	1,064	182,552	6,883,653	End May
Start Jun	6,883,653	127,482	634	159,035	6,852,734	End Jun
Start Jul	6,852,734	70,805	588	171,437	6,752,690	End Jul
Start Aug	6,752,690	50,051	542	163,651	6,639,632	End Aug
Start Sep	6,639,632	54,025	933	194,346	6,500,244	End Sep
Start Oct	6,500,244	57,632	846	187,499	6,371,223	End Oct
Start Nov	6,371,223	53,077	756	191,201	6,233,855	End Nov
Start Dec	6,233,855	47,287	515	161,257	6,120,400	End Dec
Total		2,035,382	10,739	2,156,494		



Chapter 5. Suppliers of Data



LIVESTOCK MARTS

Abbeyfeale Mart	Edenderry Mart	
Ardee Mart	Elphin Mart	Elphin Mart
Athenry Mart	Ennis Mart	Ennis Mart
Balla Mart	Enniscorthy Mart	Enniscorthy Mart
Ballina Mart	Ennistymon Mart	Ennistymon Mart
Ballinakill Mart	Fermoy Mart	Fermoy Mart
Ballinrobe Mart	Fethard Mart	Fethard Mart
Ballinasloe Mart	Gort Mart	
Ballybay Mart	Gortatlea Mart	
Ballybofey Mart	Granard Mart	
Ballyjamesduff Mart	Headford Mart	
Ballymahon Mart	Inishowen Mart	
Ballymote Mart	Kanturk Mart	
Ballyshannon Mart	Kenmare Mart	
Baltinglass Mart	Kilcullen Mart	
Bandon Mart	Kilfenora Mart	
Birr Mart	Kilkenny Mart	
Blessington Mart	Kilmallock Mart	
Borris Mart	Kilrush Mart	
Caherciveen Mart	Kingscourt Mart	
Cahir Mart	Listowel Mart	
Carlow Mart	Loughrea Mart	
Carnaross Mart	Maam Cross Mart	
Carnew Mart	Macroom Mart	
Carrick-on-Shannon Mart	Manorhamilton Mart	
Carrick-on-Suir Mart	Milford Mart	
Carrigallen Mart	Milltown Mart	
Cashel Mart	Mohill Mart	
Castleblaney Mart	Mountbellew Mart	
Castleisland Mart	Mountrath Mart	
Castlerea Mart	Nenagh Mart	
Cavan Mart	New Ross Mart	
Clifden Mart	Newport Mart	
Clones Mart	Portumna Mart	
Delvin Mart	Raphoe Mart	
Dingle Mart	Rathkeale Mart	
Donegal Mart	Roscommon Mart	
Dowra Mart	Roscrea Mart	
Dromcollogher Mart	Scariff Mart	
Drumshanbo Mart	Sixmilebridge Mart	
Dungarvan Mart	Skibbereen Mart	
Edenderry Mart		

LOCAL AUTHORITY ABATTOIRS - Start

Laurence J. Murphy	Carlow	Edna Hayes	Galway
Clonmore Meats Ltd	Carlow	Burkes Meats (Kinvara) Ltd	Galway
Fergal Harford	Cavan	Justin Flannery	Galway
Patrick Gaynor	Cavan	Sean Farrell	Galway
Leonard Lynch	Cavan	Eugene McEntee	Galway
Thomas Gaynor	Cavan	Hugh O'Donnell	Galway
Anthony McGurren	Cavan	Tom Conroy	Galway
Robert Richardson	Cavan	John Burke	Kerry
James Smith	Cavan	John F. Ashe	Kerry
Donoghues Foodfare Ltd	Cavan	Tim Sheahan	Kerry
Kevin Francis Heery	Cavan	William O'Leary	Kerry
Thomas Argue	Cavan	Richard G.Behan	Kerry
John Donnelly	Cavan	James Curran	Kerry
Edward Joyce	Clare	Peter O'Sullivan	Kerry
John Kelly	Clare	Stephen J. Cahillane	Kerry
Joseph Kelly	Clare	Christopher M. Houlihan	Kerry
Denis Corcoran	Clare	Benny McDonnell	Kerry
Sean G. Haugh	Clare	Timothy C. Hennessy	Kerry
Brendan Keane	Clare	Thomas M. Kelly	Kerry
Martin Haugh	Clare	James J. Walsh	Kerry
Michael Bresnan	Cork	Jerry Houlihan	Kerry
Edmond Clifford	Cork	Roger J. O'Sullivan	Kerry
Dan Moloney	Cork	William C. Burke	Kerry
Eddie Fitzgerald	Cork	John O'Connell	Kerry
Michael Hehir	Cork	Patrick J Burns	Kerry
James & Patrick J. Collins	Cork	Michael O'Shea	Kerry
Liam O'Driscoll	Cork	Pascal Greaney	Kildare
Michael Spillane	Cork	James & Niall O'Gorman	Kildare
John O'Sullivan	Cork	James Nolan	Kildare
John McCarthy	Cork	Derek Nolan	Kildare
John Finn	Cork	Neil Tynan	Kilkenny
Edward Hanley	Cork	Gerry O'Brien	Kilkenny
Patrick Hegarty	Cork	Patrick Kenna	Kilkenny
Patrick J. Collins	Cork	June Prendergast	Kilkenny
Christoir O Cruaiaoi	Cork	Pius Hennessy	Laois
Patrick O'Donoghue	Cork	Kevin Bracken	Laois
William F. Murphy	Cork	Thomas Kenna	Laois
Con Cronin	Cork	Michael Tynan	Laois
Malachy O'Sullivan	Cork	John Cahill	Laois
Michael J. O'Neill	Cork	P. J. Delaney	Laois
Patrick Murphy	Cork	Michael Keegan	Laois
Michael O'Keeffe	Cork	Michael Dowling	Laois
Timothy D. Cronin	Cork	Andrew Shiel	Laois
T.G.McCarthy Ltd.	Cork	John O'Malley	Leitrim
Thomas Walsh	Cork	Sean Rooney	Leitrim
Daniel Lordan	Cork	Damien Thornton	Leitrim
Tim Murphy	Cork	Douglas G. Boyd	Leitrim
Jerry Nolan	Cork	Thomas McHugh	Leitrim
Richard Walsh	Donegal	Mary Ellen & Hugh Logan	Leitrim
Mark Robinson	Donegal	Sean McMorro	Leitrim
Cathal McGlynn	Donegal	Patrick Creamer	Limerick
Stephen Kerr	Donegal	Denis O'Sullivan	Limerick
Patrick McGettigan	Donegal	Gerard O'Shea	Limerick
Charles Gallagher	Donegal	William Barry	Limerick
The National Food Centre	Dublin	Michael O'Rourke	Limerick
Thomas Lydon	Galway	Denis Greaney	Limerick
John Joe Brady	Galway	Tadhg O'Keeffe	Limerick

Nicholas P. Cooke	Limerick	Noel Wynne	Sligo
Ashgrove Wholesale Ltd	Limerick	Patrick G. Burns	Sligo
Sean Fitzgerald	Limerick	Charles Williams	Tipperary
Edmund O'Connor	Limerick	Edward Lacey	Tipperary
Ronald Rawle	Longford	Paschal Clohosey	Tipperary
John Campbell	Longford	Thomas Myles	Tipperary
Terry McLaughlin	Longford	Liam Treacy	Tipperary
Desmond Savage	Louth	Michael Buckley	Tipperary
William Jennings	Mayo	Martin O'Dwyer	Tipperary
Sean F. Kelly	Mayo	Michael & Maurice Whelan	Tipperary
Philip Gibbons	Mayo	John O'Dwyer	Tipperary
Thomas P. Byrne	Mayo	James O'Malley	Tipperary
John Moore	Mayo	James Whelan	Tipperary
Edward Philips	Mayo	Patrick Joesph Moloney	Tipperary
Gerard & Val McGreal	Mayo	Andrew English	Tipperary
Anthony Carolan	Mayo	William G. Fitzgibbon	Tipperary
James Duffy	Mayo	William Gahan	Tipperary
Seamus Hawkshaw	Mayo	Robert Colm Lewis	Tipperary
Anthony Heffernan	Mayo	Joseph Hammersly	Tipperary
Martin Maloney	Mayo	Tom Hallinan	Tipperary
James Molloy	Mayo	Patrick Walsh	Tipperary
Paddy Reilly	Mayo	Kevin Dalton	Tipperary
James P Gibney	Meath	John Hogan	Tipperary
Michael Coogan	Meath	Michael McGrath	Waterford
William Donnelly	Meath	Donal O'Reilly	Waterford
Michael & Niall Brogan	Meath	Robert Flynn	Waterford
Gerard & Martin Quinn	Monaghan	Sean Dunning	Westmeath
James Short	Monaghan	Hugh Murray	Westmeath
Hugh & Patrick Maguire	Monaghan	Joe Tynan	Westmeath
James Duffy	Monaghan	Peter Gillivan	Westmeath
Dominick Feely	Offaly	Declan Lenihan	Westmeath
Michael Healy	Offaly	John Horan	Westmeath
William Browne	Offaly	Moate Meats	Westmeath
Paul Boyd	Offaly	Anthony Gavagan	Westmeath
Damian Lynch	Offaly	Camilius Cleary	Westmeath
Stanley Taylor	Roscommon	Peter McGuinness	Westmeath
Oliver McCabe	Roscommon	Eugene McCormack	Westmeath
Joseph Regan	Roscommon	Bernard A. Troy	Westmeath
Michael Webb	Roscommon	Cannon & Cole	Westmeath
Benedict Morris	Roscommon	Christopher Byrne	Westford
Patrick Roddy	Roscommon	Richard Doyle	Wexford
Thomas Hynes	Roscommon	Matt Finn	Wicklow
Cyril McHugh	Roscommon	Patrick Murphy	Wicklow
Padraig Gilligan	Roscommon	Anthony & Padraig Farrelly	Wicklow
Ignatius Gannon	Roscommon	Myles Doyle	Wicklow
Oliver Harte	Roscommon		

LOCAL AUTHORITY ABATTOIRS - End

APPROVED EXPORT POINTS

Ballyjamesduff Mart, Cavan	Ballina Mart, Mayo
Dowra Mart, Cavan	Ballinrobe Mart, Mayo
Kellehers, Cork	Dixons, Mayo
Murphy-Hunter, Cork	Carnaross Mart, Meath
Ballybofey/Stranolar Mart, Donegal	O'Connell's Lairage, Meath
Ballyshannon Mart, Donegal	Mallon's Lairage, Meath
Raphoe Mart, Donegal	Ballybay Mart, Monaghan
Lenehans, Dublin	Castleblayney Mart, Monaghan
Gort Mart, Galway	Tullamore Mart, Offaly
Tuam Mart, Galway	Castlerea Mart, Roscommon
Hallisseys, Kerry	Elphin Mart, Roscommon
Carrigallen Mart, Leitrim	Roscommon Mart, Roscommon
Drumshanbo Mart, Leitrim	Ballymote Mart, Sligo
Manorhamilton Mart, Leitrim	Nenagh Mart, Tipperary
Mohill Mart, Leitrim	Roscrea Mart, Tipperary
Casey's, Limerick	TLT, Westmeath
Ballymahon Mart, Longford	Quinn's Lairage, Westmeath
Granard Mart, Longford	Enniscorthy Mart, Wexford
Laragh Livestock, Louth	Scallans, Wicklow

LICENSED KNACKERIES

Moyle Animal Collection Ltd, Carlow	LKS Disposals, Louth
Laurence Buggy, Carlow	Finbar & Kevin Donohue, Meath
Colm Mulvaney, Cavan	Meath Hunt Club
Kevin Mulvaney, Cavan	John O'Rourke, Meath
James Lambe, Cavan	Ward Union Hunt, Meath
Vincent Coffey, Clare	Oldcastle Laboratories, Meath
Carbery Hunt Kennels, Cork	John Costelloe, Offaly
William Fitzgerald, Cork	Midland Animal Collection, Roscommon
Liam Duggan, Cork	Moloney & Matthews, Mayo
Bartlemy Road Disposal Service, Cork	Tipperary Foxhounds, Tipperary
James Barrett, Cork	Beechfield Products, Tipperary
Collins Brothers, Cork	Michael Duggan, Tipperary
John Greene, Galway	Richard Keane, Tipperary
Frank Madden, Galway	Golden Vale Hunt, Tipperary
Kildare Hunt Club, Kildare	Suir Vale Harriers, Tipperary
South Kilkenny Foxhounds	David Flanagan, Tipperary
Kilkenny Fallen Stock Service	Patrick Morrissey, Tipperary
Charlie Lawless, Laois	John Marsh, Tipperary
John Styles, Laois	Nicholas Hannigan, Waterford
Ward Waste Products, Limerick	K Guinness, Westmeath
County Limerick Hunt Club	Larry Earle, Wexford
John McGuinness, Longford	

FACTORIES

AIBP, Bandon, Cork
AIBP, Cahir, Tipperary
AIBP, Clones, Monaghan
AIBP, Nenagh, Tipperary
AIBP, Rathkeale, Limerick
AIBP, Waterford
Ashbourne Meats, Tipperary
B & F Meats, Kilkenny
Ballaghaderreen Bacon Co, Roscommon
Ballon Meats, Carlow
Bergins, Broadford, Kildare
Dawn Ballaghaderreen, Roscommon
Dawn Ballyhaunis, Mayo
Dawn Meats, Cork
Dawn Meats, Waterford
Dunleavy Meats, Mayo
Eurofarm Foods, Meath

Donegal Meats
Charleville Foods, Cork
Glynns, Limerick
Kepak, Athleague, Roscommon
Kepak, Bandon, Cork
Kepak, Clonee, Meath
Kepak, Kilbeggan, Westmeath
Kildare Chilling, Kildare
Liffey Meats, Cavan
Liffey Meats, Hacketstown
Martin Jennings, Mayo
McGavigan Meats, Donegal
Meadow Meats, Laois
Dunbia Meats, Meath
O'Connor Meats, Roscommon
Slaney Meats, Wexford

APPENDIX

Official List of Breed Codes

AA	ABERDEEN ANGUS	LH	LONGHORN
AK	ANKOLE	LM	LIMOUSIN
AM	AMORICAINE	LR	LINCOLN RED
AN	ANGLER	LU	LUING
AU	AUBRAC	MA	MAINE ANJOU
AY	AYRSHIRE	MH	MARCHIGIANA
BA	BLONDE D'AQUITAUNE	MK	MAKEKORTHORN
BB	BELGIAN BLUE	MO	MONTBELIARDE
BE	BEEFALO	MY	MEUSE RHINE YSSEL
BF	WATER BUFFALO	NO	NORMANDE
BI	BISON	NR	NORWEGIAN RED
BL	BLUE ALBION	OE	OLD ENGLISH
BP	BRETONNE PIE-NOIRE	PI	PIEDMONTESE
BR	BRAHMAN	PT	PARTENAISE
BS	BROWN SWISS	PZ	PINZGUAER
BT	BALATA ROMANEASCA	RB	ROTBUNTE
BW	BRITISH WHITE	RD	DANISH RED
BZ	BAZADAIS	RE	REGGIANA
CB	CANADIAN BLACK	RM	ROMAGNOLA
CH	CHAROLAIS	RP	RED POLL
CI	CHIANINA	SA	SALERS
DE	DEVON	SD	SOUTH DEVON
DX	DEXTER	SG	SWISS GREY
DZ	DWARF ZEBU	SH	SHORTHORN
WE	EAST FINNISH BROWN	SI	SIMMENTAL
EP	ENGLISH PARK	SL	SHETLAND
FE	FRISONA ESPAGNOLA	SR	SWEDISH RED AND WHITE
FR	HOLSTEIN FRIESIAN	ST	STABILISER
GA	GALLOWAY	SU	SUSSEX
GB	GRONINGER BLAARKOP	SP	SPECKLE PARK
GC	GASCONNE	TT	TARANTAISE-TARINA
GL	GLOUCESTER	TY	TYRONE BLACK
GS	MURRAY GREY	VA	VAYNOL
GU	GUERNSEY	VN	VALDOSTANA NERA
GV	GELBVIEWH	VO	VOSGIENNE
GY	GAYAL	WA	WAGYU
HE	HEREFORD	WB	WELSH BLACK
HI	HIGHLAND	WP	WHITE PARK
IM	IRISH MAOL/DROIMEANN	WW	WELSH WHITE
JE	JERSEY	YK	YAK
KE	KERRY	ZE	ZEBU