



AIM BOVINE STATISTICS REPORT 2008



CMMS is being replaced by the Animal Identification and Movement (AIM) system. The AIM system is a generic traceability system that will cover various animal species. Statistical data for bovines is now sourced from the AIM system and the name of the report formerly called CMMS Statistics Report has been changed to AIM Bovine Statistics Report. The 2008 statistics report will not be printed by the Department of Agriculture, Fisheries and Food, but it is available for download from the Department's website.

Issued by NBAS Division, Backweston Campus

All rights reserved. No part of this publication may be reproduced, stored in a retrieval system, or transmitted in any form or by any means, electronic, mechanical, photocopying, recording or otherwise without acknowledgement of the source.



Contents

Contents	1
Chapter 1 Calf Birth Registration Data	3
SECTION 1	4
Calf Births by Month	4
Calf Births by Month and by Gender.....	4
Calf Births by County, by Gender and by Sire Type.....	5
Number of Calves per Breeding Herd	6
Total Number of Beef and Dairy Calves by County.....	7
Total Number of Beef and Dairy Calves by County.....	7
SECTION 2	8
Calf Births by Month and Sire Type.....	8
Calf Births by Month, Gender and Sire Type	8
SECTION 3	9
Calf Births by Month and by Breed of Dam.....	9
SECTION 4.....	10
Sire Selection for Beef Dams.....	10
Sire Selection for Dairy Dams	10
Breed Composition of 2008 Born Calves	11
SECTION 5	12
Cattle Imports by Country of Origin and Gender	12
Cattle Imports by Country of Origin and Age	12
Age Profile of Cattle Imports from UK which went for immediate slaughter.....	12
Chapter 2 Movement Data.....	13
SECTION 1	14
Mart Movements by Month and by Gender.....	14
Age Profile of Mart Movements for Beef Cattle by Month and by Gender	15
Age Profile of Mart Movements for Dairy Cattle by Month and by Gender.....	16
SECTION 2	17
Farm to Farm Movements by Month and by Gender	17
Age Profile of Farm to Farm Movements for Beef Cattle by Month and by Gender	18
Age Profile of Farm to Farm Movements for Dairy Cattle by Month and by Gender.....	19
SECTION 3	20
All Cattle Movements by Month and by Type	20
All Cattle Movements by Month and by Gender.....	21
Chapter 3 Disposal of Cattle.....	23
SECTION 1	24
Overall Summary of Cattle Disposals and On Farm Deaths	24
Overall Summary of Cattle Disposals and On Farm Deaths	25
SECTION 2	26
Cattle Disposals in Factories by Month and by Gender.....	26
Age Profile of Factory Slaughterings for Beef Cattle by Month and by Gender.....	27
Age Profile of Factory Slaughterings for Dairy Cattle by Month and by Gender	27

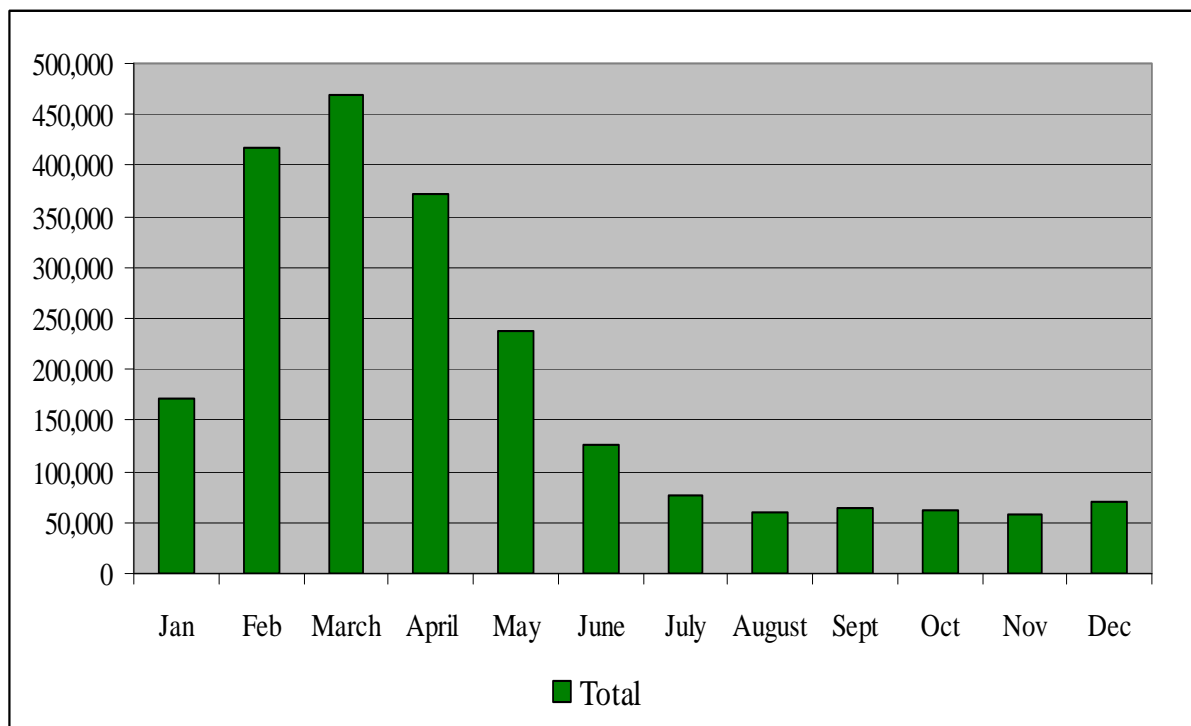
SECTION 3	28
Cattle Disposals in Local Authority Licensed Abattoirs by Month and by Gender	28
Age Profile of Abattoir Slaughterings for Beef Cattle by Month and by Gender.....	29
Age Profile of Abattoir Slaughterings for Dairy Cattle by Month and by Gender	29
SECTION 4.....	30
On Farm Deaths by Month and by Gender	30
Age Profile of On Farm Deaths for Male Beef Cattle by Month.....	31
Age Profile of On Farm Deaths for Female Beef Cattle by Month	31
Age Profile of On Farm Deaths for Male Dairy Cattle by Month	32
Age Profile of On Farm Deaths for Female Dairy Cattle by Month.....	32
SECTION 5	33
Stillborn Calves by Month and by Gender	33
Stillborn Calves by Month, Gender and Sire	33
SECTION 6.....	34
Live Exports by Month and by Gender.....	34
Age Profile of Live Exports for Beef Cattle by Month and by Gender	35
Age Profile of Live Exports for Dairy Cattle by Month and by Gender	35
Destination of Live Exports	36
Age Profile of Live Exports by Breed	36
Destination of Live Exports by Age	37
Chapter 4 National Herd Data	39
SECTION 1	40
Age Profile of Live Herd at 31/12/2008 by Gender	40
Cattle Population by Age.....	40
SECTION 2.....	41
Age Profile of Live Herd at 31/12/2008 by County	41
County.....	41
SECTION 3	42
Age Profile of Live Herd at 31/12/2008 by Breed.....	42
SECTION 4.....	43
Age Profile of Live Herd at 31/12/2008 by County and by Breed	43
SECTION 5	44
Profile of Herd Size at 31/12/2008	44
Imported Animals in the Live Herd at 31/12/2008.....	45
Bovine Population 2008.....	46
Chapter 5 Suppliers of Data	47
LIVESTOCK MARTS.....	48
LOCAL AUTHORITY ABATTOIRS.....	49
APPROVED EXPORT POINTS	52
LICENSED KNACKERIES	53
FACTORIES	54
APPENDIX	55
Official List of Breed Codes.....	55

Chapter 1 Calf Birth Registration Data



SECTION 1

Calf Births by Month



Calf Births by Month and by Gender

	Male	Female	Total
Jan	86,253	86,248	172,501
Feb	212,931	203,472	416,403
March	242,692	226,457	469,149
April	192,997	179,507	372,504
May	122,664	115,013	237,677
June	65,454	61,379	126,833
July	38,941	37,188	76,129
August	30,920	29,656	60,576
Sept	32,617	31,420	64,037
Oct	32,217	30,650	62,867
Nov	29,442	28,430	57,872
Dec	35,805	34,593	70,398
Total	1,122,933	1,064,013	2,186,946

Calf Births by County, by Gender and by Sire Type

County	Calves born to a Beef Bull			Calves born to a Dairy Bull			Overall Total	% of Total
	Male	Female	Total	Male	Female	Total		
Carlow	11,722	11,229	22,951	2,796	2,668	5,464	28,415	1.3
Cavan	34,027	32,068	66,095	8,397	7,847	16,244	82,339	3.8
Clare	50,422	47,914	98,336	5,962	5,681	11,643	109,979	5.0
Cork	106,007	98,242	204,249	75,856	72,543	148,399	352,648	16.1
Donegal	27,082	26,054	53,136	5,125	4,940	10,065	63,201	2.9
Dublin	2,275	2,189	4,464	570	576	1,146	5,610	0.3
Galway	65,785	63,030	128,815	5,931	5,779	11,710	140,525	6.4
Kerry	48,583	45,576	94,159	22,156	21,248	43,404	137,563	6.3
Kildare	12,282	11,537	23,819	3,122	2,976	6,098	29,917	1.4
Kilkenny	34,197	32,131	66,328	15,160	14,777	29,937	96,265	4.4
Laois	25,891	24,607	50,498	7,722	7,374	15,096	65,594	3.0
Leitrim	16,064	15,352	31,416	507	491	998	32,414	1.5
Limerick	46,131	43,183	89,314	22,308	21,695	44,003	133,317	6.1
Longford	17,347	16,289	33,636	1,600	1,541	3,141	36,777	1.7
Louth	7,986	7,729	15,715	3,727	3,715	7,442	23,157	1.1
Mayo	48,290	45,473	93,763	3,999	3,846	7,845	101,608	4.6
Meath	26,384	24,979	51,363	11,864	11,434	23,298	74,661	3.4
Monaghan	25,859	24,474	50,333	7,582	7,268	14,850	65,183	3.0
Offaly	23,656	22,273	45,929	4,850	4,698	9,548	55,477	2.5
Roscommon	32,516	31,046	63,562	1,151	1,091	2,242	65,804	3.0
Sligo	20,390	19,412	39,802	1,990	1,938	3,928	43,730	2.0
Tipperary	64,271	60,478	124,749	29,470	28,381	57,851	182,600	8.3
Waterford	26,344	24,982	51,326	15,555	14,437	29,992	81,318	3.7
Westmeath	24,675	23,376	48,051	4,649	4,469	9,118	57,169	2.6
Wexford	30,034	28,131	58,165	12,423	11,948	24,371	82,536	3.8
Wicklow	15,617	14,524	30,141	4,624	4,374	8,998	39,139	1.8
Total	843,837	796,278	1,640,115	279,096	267,735	546,831	2,186,946	

Number of Calves per Breeding Herd

County	No of Breeding Herds	1 - 10	11 - 24	25 - 49	50 - 74	75 +
Carlow	992	272	278	253	133	56
Cavan	3,859	1,410	1,262	846	237	104
Clare	5,106	1,670	1,828	1,187	316	105
Cork	9,012	1,872	1,933	2,485	1,530	1,192
Donegal	4,388	2,677	1,056	424	130	101
Dublin	236	112	60	29	20	15
Galway	9,067	4,615	2,657	1,387	286	122
Kerry	5,186	1,821	1,389	1,142	514	320
Kildare	1,098	405	262	238	116	77
Kilkenny	2,442	422	536	704	487	293
Laois	1,965	460	516	559	245	185
Leitrim	2,764	1,654	834	233	29	14
Limerick	3,863	972	892	1,008	596	395
Longford	1,877	711	663	379	82	42
Louth	768	266	178	163	94	67
Mayo	7,918	4,500	2,431	793	139	55
Meath	2,306	746	531	540	242	247
Monaghan	3,012	1,054	1,005	652	231	70
Offaly	2,047	651	553	511	212	120
Roscommon	4,155	1,912	1,417	673	109	44
Sligo	2,995	1,562	969	361	75	28
Tipperary	4,768	943	1,015	1,411	819	580
Waterford	1,682	257	305	428	337	355
Westmeath	2,101	656	583	540	200	122
Wexford	2,357	529	570	641	373	244
Wicklow	1,305	375	387	305	124	114
Total	87,269	32,524	24,110	17,892	7,676	5,067

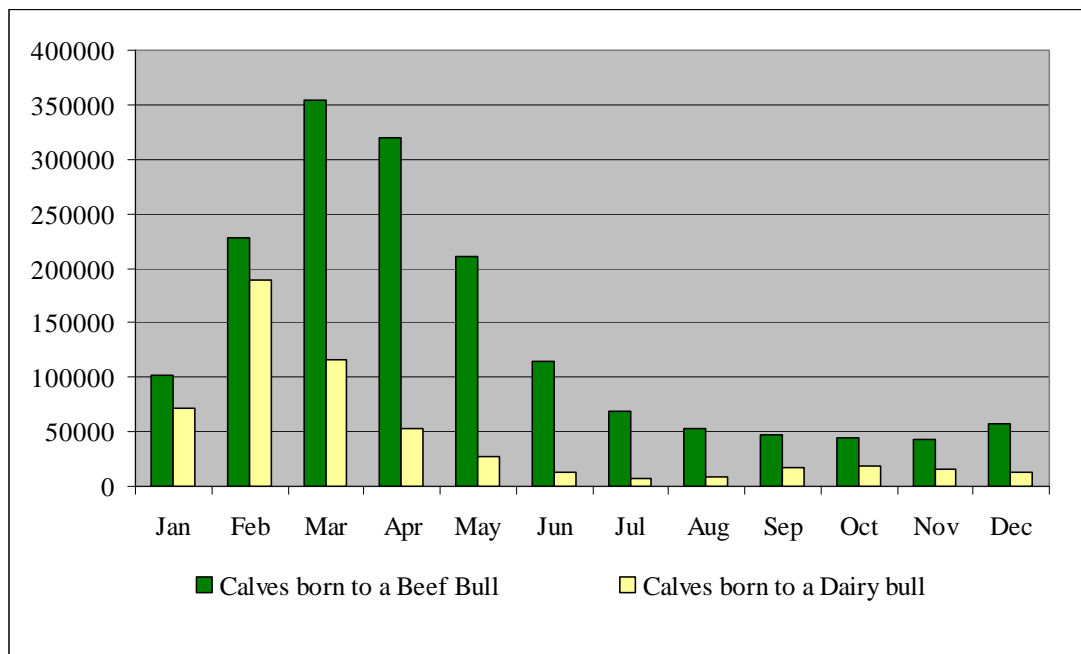
Total Number of Beef and Dairy Calves by County *

	Beef Calves	% Beef	Dairy Calves	% Dairy	Total Calves
Carlow	18,285	64.3	10,130	35.7	28,415
Cavan	49,731	60.4	32,608	39.6	82,339
Clare	81,263	73.9	28,716	26.1	109,979
Cork	87,366	24.8	265,282	75.2	352,648
Donegal	47,579	75.3	15,622	24.7	63,201
Dublin	3,418	60.9	2,192	39.1	5,610
Galway	114,723	81.6	25,802	18.4	140,525
Kerry	49,171	35.7	88,392	64.3	137,563
Kildare	19,168	64.1	10,749	35.9	29,917
Kilkenny	41,845	43.5	54,420	56.5	96,265
Laois	38,597	58.8	26,997	41.2	65,594
Leitrim	30,318	93.5	2,096	6.5	32,414
Limerick	41,873	31.4	91,444	68.6	133,317
Longford	29,774	81.0	7,003	19.0	36,777
Louth	11,465	49.5	11,692	50.5	23,157
Mayo	84,667	83.3	16,941	16.7	101,608
Meath	36,820	49.3	37,841	50.7	74,661
Monaghan	34,562	53.0	30,621	47.0	65,183
Offaly	35,994	64.9	19,483	35.1	55,477
Roscommon	60,667	92.2	5,137	7.8	65,804
Sligo	35,400	81.0	8,330	19.0	43,730
Tipperary	73,615	40.3	108,985	59.7	182,600
Waterford	28,638	35.2	52,680	64.8	81,318
Westmeath	40,374	70.6	16,795	29.4	57,169
Wexford	35,850	43.4	46,686	56.6	82,536
Wicklow	23,330	59.6	15,809	40.4	39,139
Total	1,154,493	52.8	1,032,453	47.2	2,186,946

* FOR THE PURPOSE OF THIS TABLE BEEF AND DAIRY CALVES ARE DEFINED BY BREED OF DAM

SECTION 2

Calf Births by Month and Sire Type



Calf Births by Month, Gender and Sire Type

	Calves born to a Beef bull			Calves born to a Dairy bull			Total
	Male	Female	Total	Male	Female	Total	
Jan	51,478	50,048	101,526	34,775	36,200	70,975	172,501
Feb	116,159	111,349	227,508	96,772	92,123	188,895	416,403
Mar	182,620	170,907	353,527	60,072	55,550	115,622	469,149
Apr	165,467	153,708	319,175	27,530	25,799	53,329	372,504
May	108,718	101,679	210,397	13,946	13,334	27,280	237,677
Jun	59,010	55,076	114,086	6,444	6,303	12,747	126,833
Jul	35,338	33,466	68,804	3,603	3,722	7,325	76,129
Aug	26,828	25,764	52,592	4,092	3,892	7,984	60,576
Sep	24,095	22,967	47,062	8,522	8,453	16,975	64,037
Oct	22,948	21,806	44,754	9,269	8,844	18,113	62,867
Nov	21,685	21,001	42,686	7,757	7,429	15,186	57,872
Dec	29,491	28,507	57,998	6,314	6,086	12,400	70,398
Total	843,837	796,278	1,640,115	279,096	267,735	546,831	2,186,946

SECTION 3

Calf Births by Month and by Breed of Dam

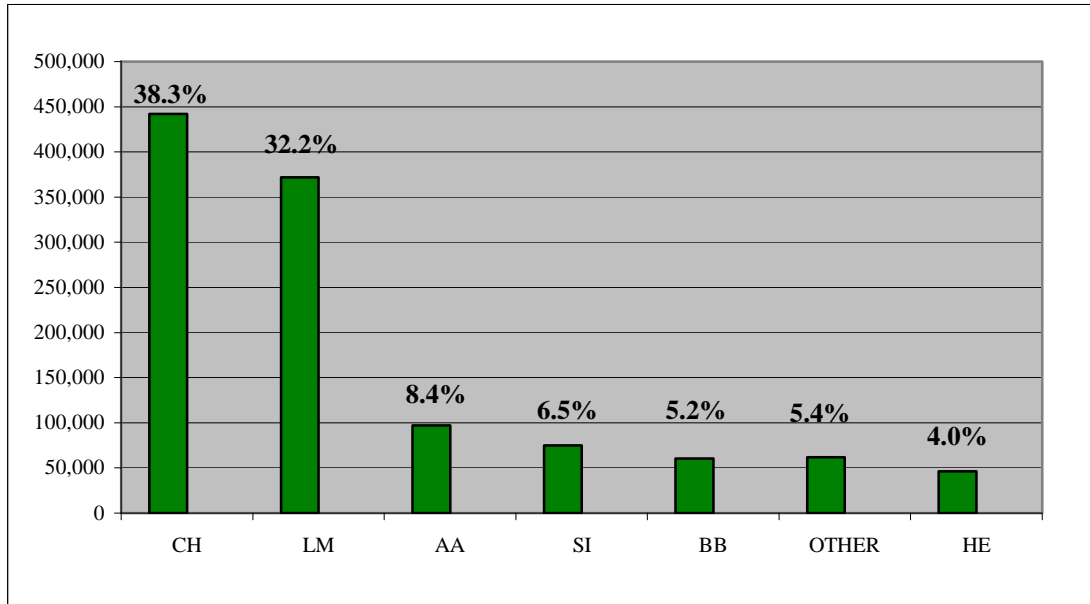
Month	FR	LM	CH	SI	AA	HE	BB	SH	MO	Other	SA	RB	BA	JE	MY	Total
Jan	93,447	21,248	16,863	11,797	8,050	7,810	4,510	2,180	2,334	1,015	773	810	727	549	388	172,501
Feb	271,195	33,391	28,981	19,919	15,672	14,999	7,286	4,188	8,219	3,230	1,328	3,017	869	2,974	1,135	416,403
Mar	226,397	61,809	53,835	31,817	28,383	26,308	12,122	7,810	7,956	2,834	2,375	2,510	1,532	2,368	1,093	469,149
Apr	143,481	60,652	54,927	28,018	27,439	24,991	11,212	7,745	5,217	2,153	2,073	1,324	1,520	1,043	709	372,504
May	82,218	41,274	38,840	18,271	19,213	17,314	7,496	5,327	2,803	1,306	1,229	603	1,015	429	339	237,677
Jun	40,861	22,197	21,997	10,277	10,743	9,927	4,274	2,887	1,297	721	641	214	493	129	175	126,833
Jul	21,302	14,245	14,106	6,387	6,869	6,562	2,665	1,821	717	409	398	131	324	105	88	76,129
Aug	16,455	12,143	10,777	5,335	5,322	5,083	2,212	1,291	590	391	417	93	305	89	73	60,576
Sep	22,790	12,165	9,015	5,378	4,701	4,447	2,120	971	624	456	490	109	454	207	110	64,037
Oct	24,000	11,846	8,552	5,194	4,101	3,890	2,062	855	679	417	404	116	510	126	115	62,867
Nov	20,509	11,515	8,151	5,163	3,993	3,569	1,947	850	622	466	414	82	453	67	71	57,872
Dec	17,065	17,059	11,793	7,725	5,143	4,711	3,056	1,263	594	485	625	128	576	65	110	70,398
Total	979,720	319,544	277,837	155,281	139,629	129,611	60,962	37,188	31,652	13,883	11,167	9,137	8,778	8,151	4,406	2,186,946

FR: Friesian **LM:** Limousin **CH:** Charolais **SI:** Simmental **AA:** Aberdeen Angus
HE: Hereford **BB:** Belgian Blue **SH:** Shorthorn **MO:** Montbelliarde **SA:** Salers
RB: Rotbunte **BA:** Blonde D'Aquitaine **JE:** Jersey **MY:** Meuse Rhine Yssel

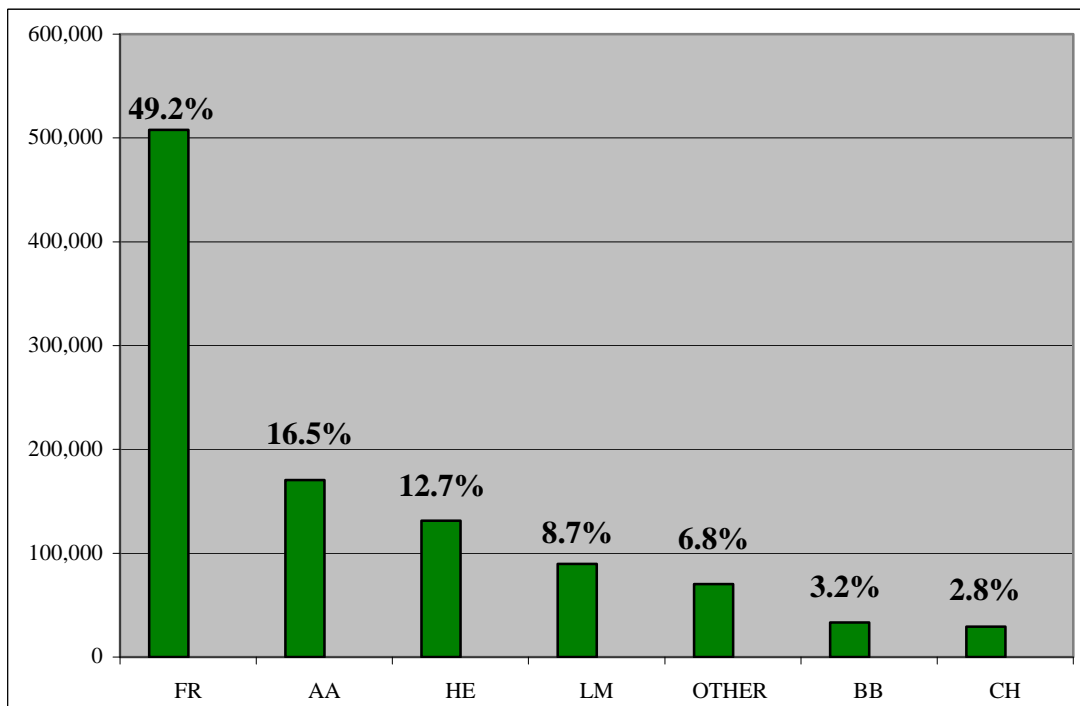
* For full list of breed codes see appendix

SECTION 4

Sire Selection for Beef Dams



Sire Selection for Dairy Dams



Breed Composition of 2008 Born Calves

Breed of Dam

Breed of Sire

Breed	FR	LM	CH	SI	AA	HE	BB	SH	MO	Other*	SA	BA	RB	MY	JE	Total
FR	494,170	918	360	1,113	1,262	1,183	693	640	6,359	2,356	16	24	3,058	916	4,000	517,068
HE	126,990	5,010	4,241	4,081	5,117	23,685	1,625	1,342	3,091	583	103	124	755	380	459	177,586
CH	26,130	97,397	168,232	53,730	43,465	42,342	19,357	10,870	2,431	1,074	3,677	1,797	252	306	103	471,163
SI	26,703	12,305	11,364	31,311	5,986	8,007	2,919	1,847	1,404	307	456	283	232	142	51	103,317
LM	83,531	157,745	65,243	44,040	34,621	34,915	20,987	8,472	4,795	1,611	2,105	2,313	606	595	227	461,806
AA	163,116	15,897	12,324	8,922	38,406	11,150	4,416	3,260	4,558	1,605	518	397	1,541	476	1,045	267,631
BA	1,467	2,765	1,844	1,352	820	766	971	175	168	57	159	2,505	39	15	17	13,120
BB	31,064	21,226	9,486	7,386	6,076	4,469	8,343	1,385	1,754	475	22	1,031	229	251	101	93,298
JE	5,605	7	6	11	34	9	3	19	152	134	1	0	49	9	1,859	7,898
MO	6,456	70	71	152	91	110	30	44	5,797	122	6	2	111	121	48	13,231
RB	2,823	31	18	30	27	20	17	18	262	87	3	1	1,883	95	30	5,345
MY	205	9	3	17	12	13	6	23	50	16	0	0	63	956	3	1,376
SA	2,387	2,276	2,038	1,139	1,223	997	474	550	176	83	3,228	93	45	22	13	14,744
SH	3,363	1,690	1,307	975	1,597	1,231	513	8,257	210	183	107	21	60	53	46	19,613
Other*	5,710	2,198	1,300	1,022	892	714	608	286	445	5,190	766	187	214	69	149	19,750
Total	979,720	319,544	277,837	155,281	139,629	129,611	60,962	37,188	31,652	13,883	11,167	8,778	9,137	4,406	8,151	2,186,946

FR: Friesian **LM:** Limousin **CH:** Charolais **SI:** Simmental **AA:** Aberdeen Angus
HE: Hereford **BB:** Belgian Blue **SH:** Shorthorn **MO:** Montbelliarde **SA:** Salers
RB: Rotbunte **BA:** Blonde D'Aquitaine **JE:** Jersey **MY:** Meuse Rhine Yssel

* For full list of breed codes see appendix

SECTION 5

Cattle Imports by Country of Origin and Gender

	Male	Female	Total
UK *	4,261	16,957	21,218
Sweden	0	97	97
France	23	69	92
Romania	0	36	36
Belgium	30	0	30
Netherlands	0	3	3
Italy	2	0	2
Total	4,316	17,162	21,478

* Of the cattle imported from UK, 16,202 went for immediate slaughter

Cattle Imports by Country of Origin and Age *

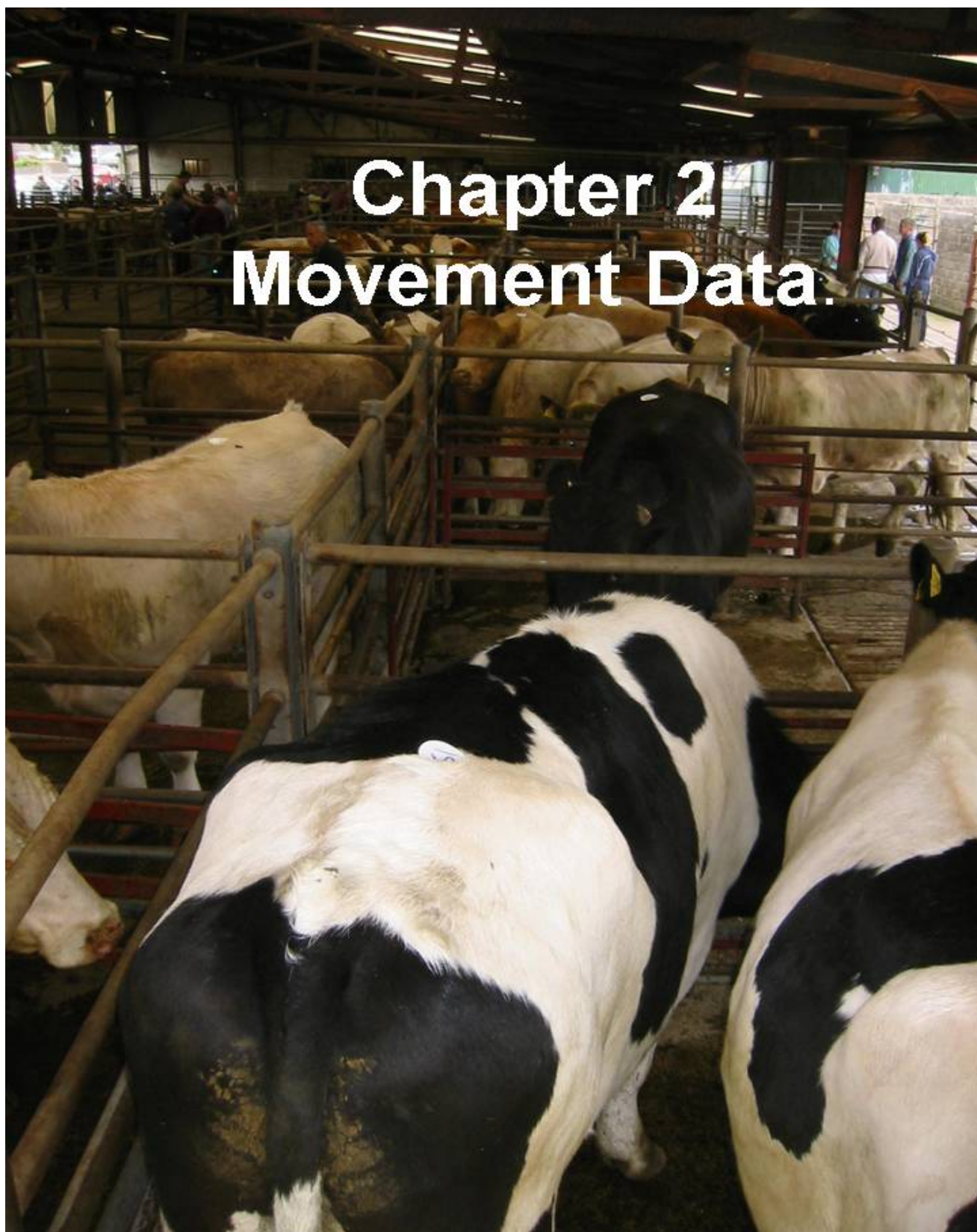
	0 - 12 months	12 - 18 months	18 - 24 months	24 - 36 months	36 + months	Total
UK	2,573	426	494	431	1092	5,016
Sweden	0	0	40	57	0	97
France	35	10	7	24	16	92
Romania	36	0	0	0	0	36
Belgium	0	7	16	7	0	30
Netherlands	1	0	2	0	0	3
Italy	0	2	0	0	0	2
Total	2,645	445	559	519	1,108	5,276

* Figure excludes cattle imported from UK which went for immediate slaughter

Age Profile of Cattle Imports from UK which went for immediate slaughter

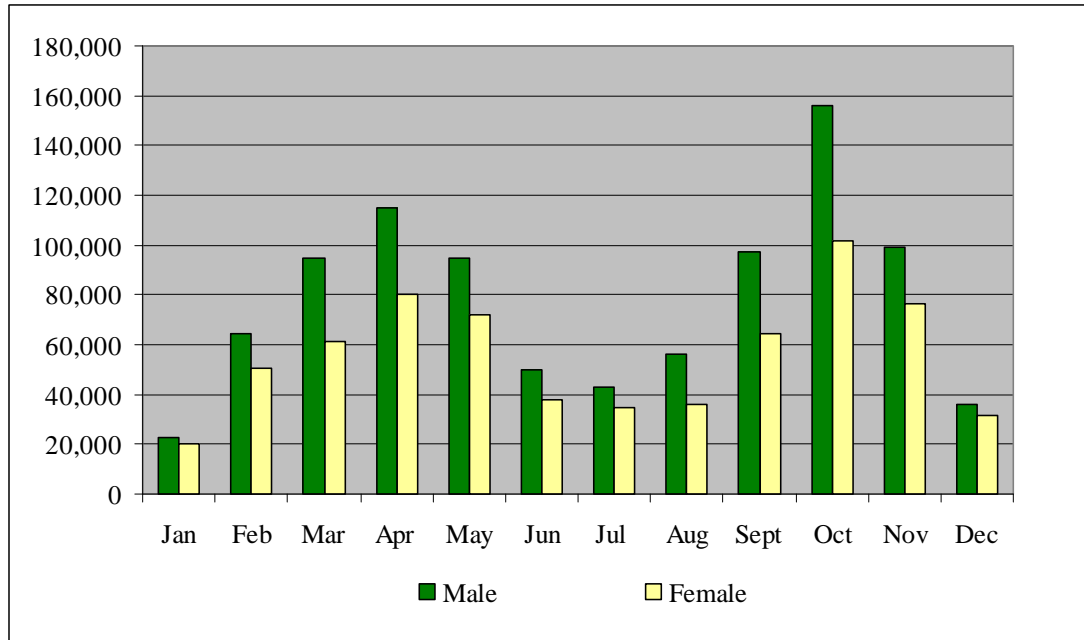
0 - 24 mts	24 - 48 mts	48 - 72 mts	72 - 96 mts	96 - 120 mts	120 mts +	Total
1,172	2,538	3,835	3,986	2,926	1,745	16,202

For Full List of Breed codes see Appendix



SECTION 1

Mart Movements by Month and by Gender



	Male	Female	Total
January	22,814	20,201	43,015
February	64,364	50,838	115,202
March	94,783	60,992	155,775
April	115,253	79,949	195,202
May	94,723	71,844	166,567
June	50,004	37,791	87,795
July	43,150	34,656	77,806
August	56,244	36,173	92,417
September	97,068	64,511	161,579
October	156,301	101,983	258,284
November	98,883	76,348	175,231
December	36,045	31,374	67,419
Total	929,632	666,660	1,596,292

* These figures include 133,645 movements where the animal was unsold in the mart.

Age Profile of Mart Movements for Beef Cattle * by Month and by Gender

	0 - 6 weeks		6 wks - 6 mts		6 - 12 mts		12 - 18 mts		18 - 24 mts		24 - 30 mts		30 mts +		Total
	M	F	M	F	M	F	M	F	M	F	M	F	M	F	
Jan	1,131	920	657	520	7,893	6,734	1,358	797	5,389	4,203	654	447	1,293	3,844	35,840
Feb	4,948	3,915	850	650	18,726	15,547	4,179	2,742	13,411	10,562	2,363	1,690	2,870	8,998	91,451
Mar	12,251	9,737	841	689	18,121	15,105	9,820	5,619	16,304	9,679	7,146	3,568	2,821	8,025	119,726
Apr	13,472	10,908	1,539	1,268	17,757	14,772	24,824	16,643	15,945	8,483	14,767	6,873	2,881	8,676	158,808
May	11,276	9,421	2,287	1,948	13,371	9,924	27,648	18,783	9,015	5,357	13,169	7,364	2,420	9,889	141,872
Jun	5,975	5,010	1,654	1,451	5,401	3,947	16,156	10,697	3,181	2,026	7,795	4,631	1,477	6,258	75,659
July	2,801	2,528	1,653	1,468	4,253	3,205	14,932	11,874	2,690	1,886	8,031	4,485	1,553	5,851	67,210
Aug	1,394	1,273	2,094	1,613	7,722	5,012	20,404	13,347	5,094	2,726	9,838	4,200	2,222	5,333	82,272
Sep	1,023	905	5,894	4,186	18,029	12,069	27,446	19,254	15,101	9,430	12,943	5,736	4,658	9,016	145,690
Oct	951	776	9,906	6,887	47,521	30,963	27,102	17,334	35,134	20,170	11,346	5,169	8,277	15,147	236,683
Nov	756	667	5,696	3,912	36,939	26,389	11,940	7,833	24,035	15,519	4,729	2,509	5,541	13,827	160,292
Dec	535	466	1,576	1,188	13,179	9,747	3,218	2,201	9,397	6,815	1,221	877	2,075	6,313	58,808
Total	56,513	46,526	34,647	25,780	208,912	153,414	189,027	127,124	154,696	96,856	94,002	47,549	38,088	101,177	1,374,311

* FOR THE PURPOSE OF THIS TABLE BEEF CATTLE ARE DEFINED AS THE PROGENY OF BULLS OF A BEEF BREED

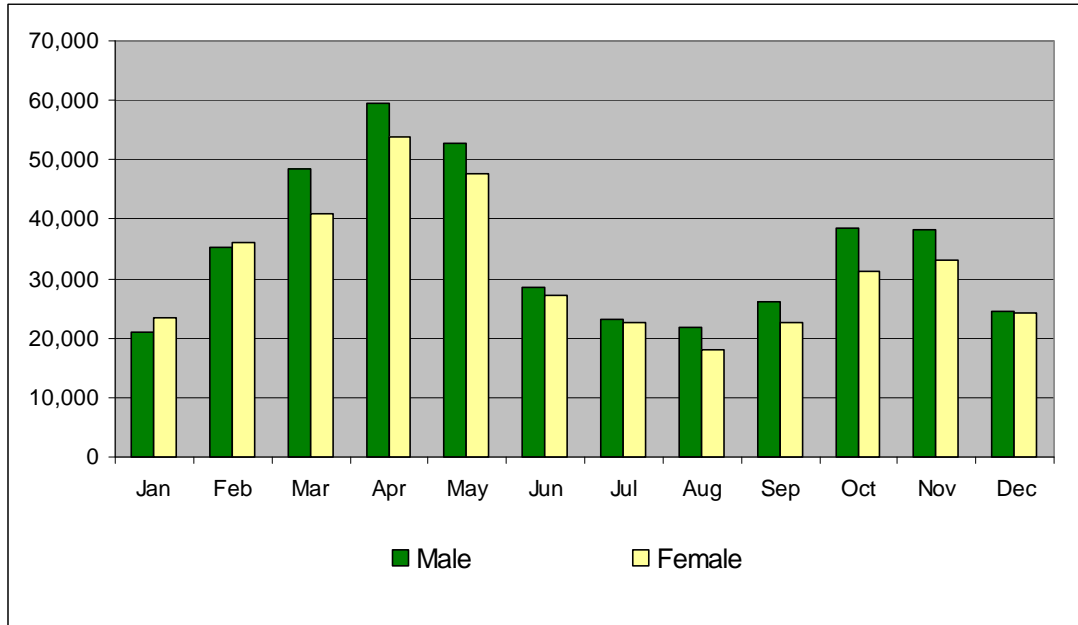
Age Profile of Mart Movements for Dairy Cattle ** by Month and by Gender

	0 - 6 weeks		6 wks - 6 mts		6 - 12 mts		12 - 18 mts		18 - 24 mts		24 - 30 mts		30 mts +		Total
	M	F	M	F	M	F	M	F	M	F	M	F	M	F	
Jan	1,618	43	239	13	722	78	196	11	1,189	320	184	114	291	2,157	7,175
Feb	11,081	180	288	12	1,420	147	1,253	30	1,706	759	935	600	334	5,006	23,751
Mar	18,881	553	640	54	907	125	3,086	127	1,452	522	2,185	1,206	328	5,983	36,049
Apr	10,105	619	1,425	113	802	137	6,996	598	1,106	331	3,303	2,098	331	8,430	36,394
May	4,721	498	1,243	89	556	109	5,246	643	814	211	2,581	1,089	376	6,519	24,695
Jun	1,946	354	676	77	262	32	3,226	290	527	58	1,450	355	278	2,605	12,136
July	778	163	486	58	183	20	3,200	222	661	28	1,648	327	281	2,541	10,596
Aug	406	97	289	62	266	34	2,598	217	2,331	73	1,068	185	518	2,001	10,145
Sep	718	63	262	69	782	63	2,151	177	6,174	173	848	212	1,039	3,158	15,889
Oct	1,491	46	237	49	2,059	113	1,547	105	9,008	457	674	191	1,048	4,576	21,601
Nov	1,391	33	293	43	1,821	132	616	76	4,204	463	365	128	557	4,817	14,939
Dec	1,057	32	195	10	842	87	250	35	2,064	413	109	79	327	3,111	8,611
Total	54,193	2,681	6,273	649	10,622	1,077	30,365	2,531	31,236	3,808	15,350	6,584	5,708	50,904	221,981

** FOR THE PURPOSE OF THIS TABLE DAIRY CATTLE ARE DEFINED AS THE PROGENY OF BULLS OF A DAIRY BREED

SECTION 2

Farm to Farm Movements by Month and by Gender



	Male	Female	Total
January	20,964	23,407	44,371
February	35,279	36,089	71,368
March	48,503	41,057	89,560
April	59,412	53,976	113,388
May	52,826	47,612	100,438
June	28,662	27,308	55,970
July	23,284	22,525	45,809
August	21,729	17,990	39,719
September	26,203	22,647	48,850
October	38,499	31,202	69,701
November	38,341	33,230	71,571
December	24,515	24,331	48,846
Total	418,217	381,374	799,591

Age Profile of Farm to Farm Movements for Beef Cattle * by Month and by Gender

	0 - 6 weeks		6 wks - 6 mts		6 - 12 mts		12 - 18 mts		18 - 24 mts		24 - 30mts		30 mts +		Total
	M	F	M	F	M	F	M	F	M	F	M	F	M	F	
Jan	1,299	1,358	1,017	860	7,049	5,864	1,335	691	3,569	3,250	362	464	915	4,402	32,435
Feb	5,229	4,821	783	651	8,601	7,210	1,784	1,230	3,991	3,775	697	899	1,192	6,213	47,076
Mar	11,837	10,722	955	823	8,029	6,301	3,738	2,277	3,623	2,962	1,455	1,459	1,040	4,882	60,103
Apr	13,294	12,793	2,031	1,932	7,965	5,921	10,124	6,642	4,336	2,645	3,636	2,814	1,417	5,523	81,073
May	9,589	9,450	3,116	2,943	6,241	4,056	13,586	7,286	3,092	1,916	4,154	3,249	1,675	6,075	76,428
Jun	4,700	4,468	2,896	2,509	2,695	1,872	7,612	5,293	1,334	920	2,168	2,016	981	3,816	43,280
July	2,339	2,102	3,000	2,477	1,988	1,411	6,940	4,730	947	741	1,869	1,825	837	3,427	34,633
Aug	1,130	961	2,616	2,119	2,124	1,434	6,693	4,204	1,213	842	1,741	1,536	832	2,813	30,258
Sep	906	791	2,986	2,342	4,451	2,853	6,788	4,274	3,171	2,189	1,560	1,459	908	3,660	38,338
Oct	939	793	3,581	2,539	10,803	7,308	5,792	3,812	6,329	4,161	1,538	1,297	1,485	4,803	55,180
Nov	856	746	2,509	1,852	12,897	8,908	3,749	2,304	7,431	4,781	996	972	1,499	5,615	55,115
Dec	742	686	1,162	938	8,818	5,797	1,833	1,050	4,399	3,050	515	475	1,207	4,669	35,341
Total	52,860	49,691	26,652	21,985	81,661	58,935	69,974	43,793	43,435	31,232	20,691	18,465	13,988	55,898	589,260

* FOR THE PURPOSE OF THIS TABLE BEEF CATTLE ARE DEFINED AS THE PROGENY OF BULLS OF A BEEF BREED

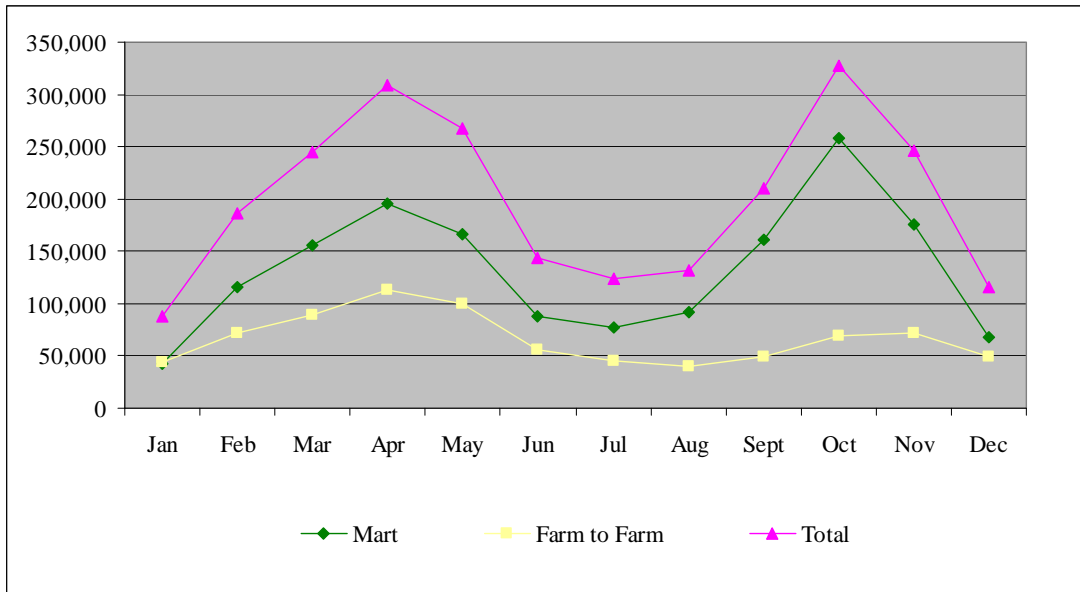
Age Profile of Farm to Farm Movements for Dairy Cattle ** by Month and by Gender

	0 - 6 weeks		6 wks - 6 mts		6 - 12 mts		12 - 18 mts		18 - 24 mts		24 - 30 mts		30 mts +		Total
	M	F	M	F	M	F	M	F	M	F	M	F	M	F	
Jan	1,583	223	468	121	1,489	751	419	91	1,002	1,448	179	301	278	3,583	11,936
Feb	8,359	961	576	122	1,438	629	1,018	376	920	1,440	460	1,544	231	6,218	24,292
Mar	12,661	2,238	1,197	270	757	410	1,752	533	468	747	765	1,719	226	5,714	29,457
Apr	7,008	2,029	2,772	941	704	425	3,896	1,880	594	535	1,356	1,993	279	7,903	32,315
May	2,516	1,259	2,765	1,245	469	291	3,511	1,758	494	273	1,381	1,529	237	6,282	24,010
Jun	1,045	614	2,006	678	275	93	1,888	855	294	122	581	803	187	3,249	12,690
July	524	198	1,765	896	334	218	1,804	662	356	238	452	751	129	2,849	11,176
Aug	460	136	1,406	401	868	330	1,321	342	821	206	313	438	191	2,228	9,461
Sep	865	138	595	300	1,509	428	712	320	1,298	641	223	383	231	2,869	10,512
Oct	1,879	251	564	250	2,468	992	497	159	2,085	1,051	152	307	387	3,479	14,521
Nov	1,489	151	607	124	2,483	965	462	162	2,796	2,040	211	342	356	4,268	16,456
Dec	1,342	151	1,040	112	1,678	864	308	115	1,104	1,723	129	251	238	4,450	13,505
Total	39,731	8,349	15,761	5,460	14,472	6,396	17,588	7,253	12,232	10,464	6,202	10,361	2,970	53,092	210,331

** FOR THE PURPOSE OF THIS TABLE DAIRY CATTLE ARE DEFINED AS THE PROGENY OF BULLS OF A DAIRY BREED

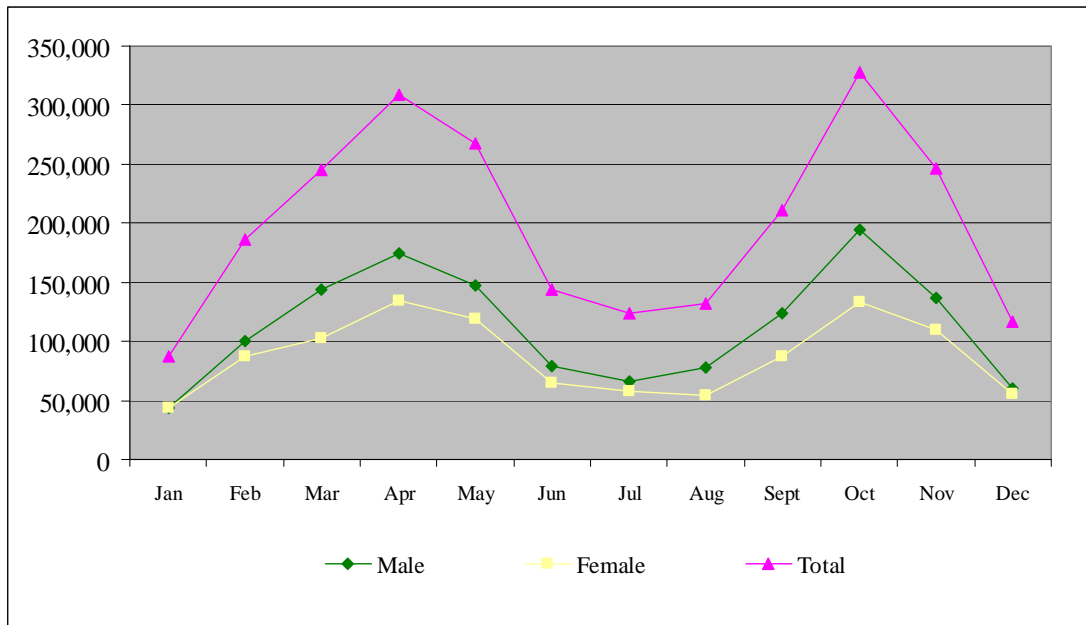
SECTION 3

All Cattle Movements by Month and by Type



	Mart	Farm to Farm	Total
January	43,015	44,371	87,386
February	115,202	71,368	186,570
March	155,775	89,560	245,335
April	195,202	113,388	308,590
May	166,567	100,438	267,005
June	87,795	55,970	143,765
July	77,806	45,809	123,615
August	92,417	39,719	132,136
September	161,579	48,850	210,429
October	258,284	69,701	327,985
November	175,231	71,571	246,802
December	67,419	48,846	116,265
Total	1,596,292	799,591	2,395,883

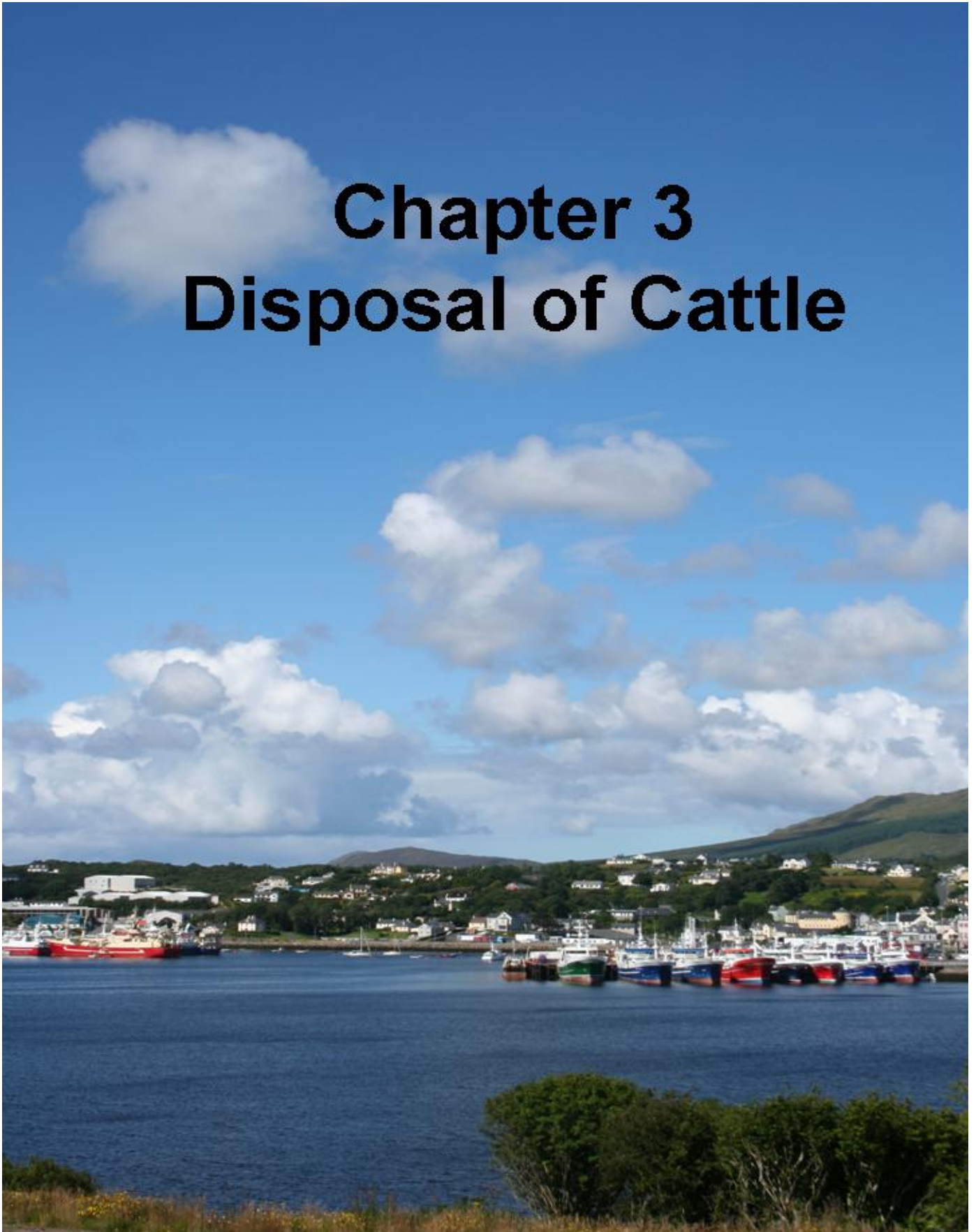
All Cattle Movements by Month and by Gender



	Male	Female	Total
January	43,778	43,608	87,386
February	99,643	86,927	186,570
March	143,286	102,049	245,335
April	174,665	133,925	308,590
May	147,549	119,456	267,005
June	78,666	65,099	143,765
July	66,434	57,181	123,615
August	77,973	54,163	132,136
September	123,271	87,158	210,429
October	194,800	133,185	327,985
November	137,224	109,578	246,802
December	60,560	55,705	116,265
Total	1,347,849	1,048,034	2,395,883

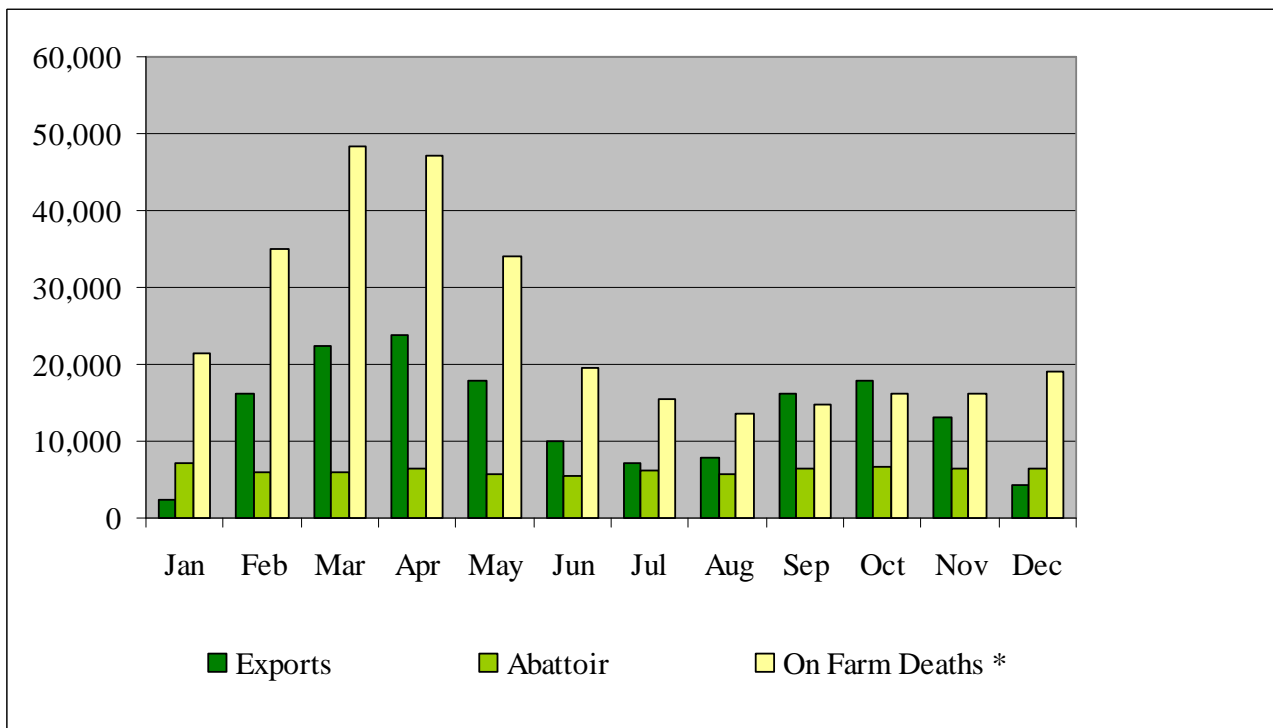
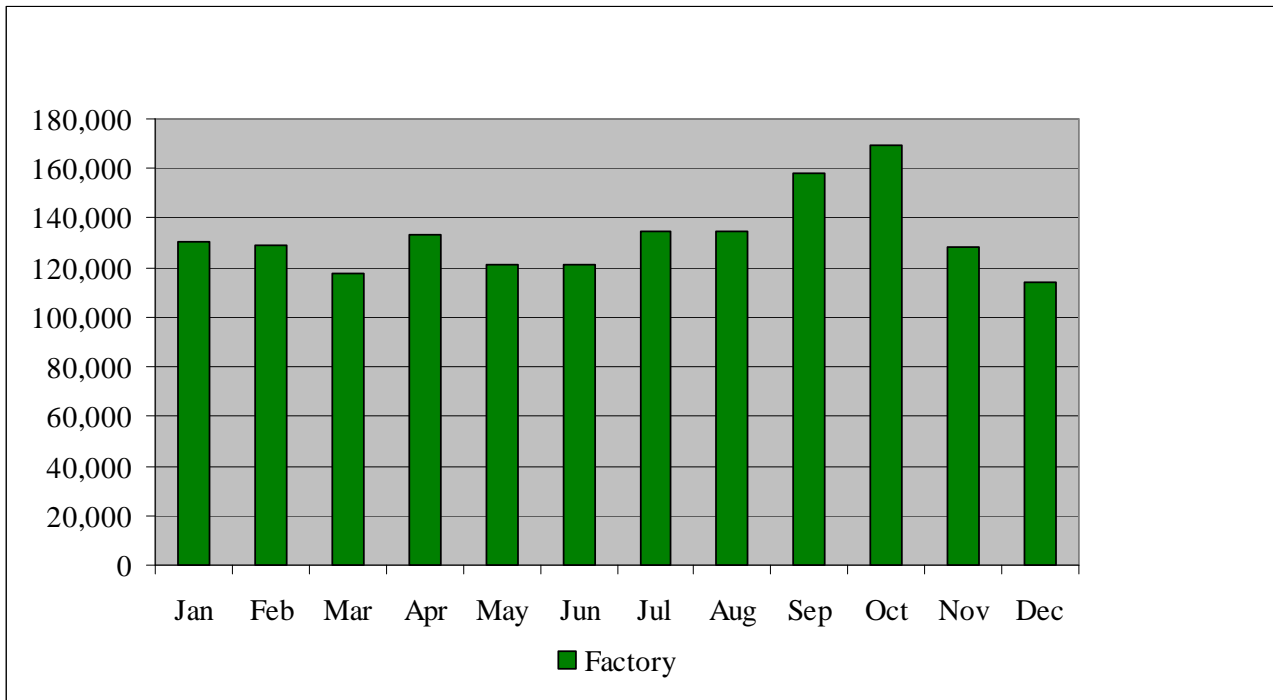
Chapter 3

Disposal of Cattle



SECTION 1

Overall Summary of Cattle Disposals and On Farm Deaths



* Including Stillborn Animals

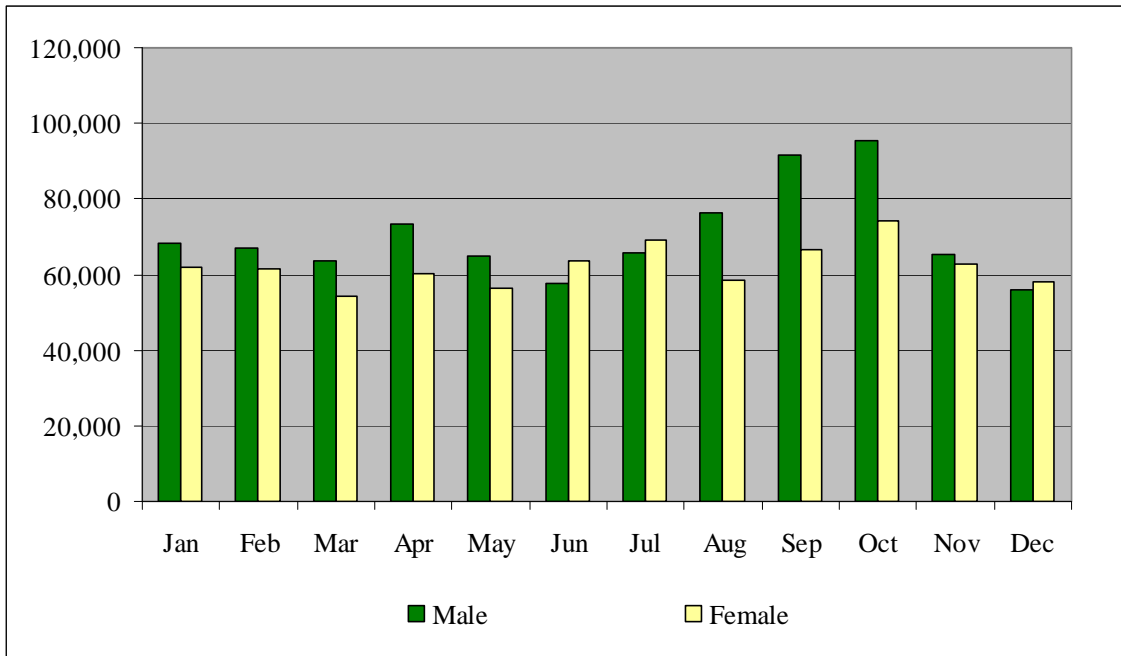
Overall Summary of Cattle Disposals and On Farm Deaths

	Factory	Exports	Abattoir	On Farm Deaths**	Stillborn	Total
January	130,194	2,385	7,045	17,234	4,121	160,979
February	128,647	16,074	5,884	25,703	9,306	185,614
March	117,753	22,318	5,946	38,733	9,653	194,403
April	133,233	23,819	6,494	40,491	6,606	210,643
May	121,138	17,832	5,758	30,340	3,778	178,846
June	120,877	10,063	5,535	17,938	1,666	156,079
July	134,999	7,106	6,268	14,544	1,046	163,963
August	134,832	7,811	5,694	12,615	1,034	161,986
September	158,044	16,258	6,528	13,357	1,302	195,489
October	169,713	17,792	6,743	14,788	1,327	210,363
November	128,055	13,149	6,480	14,862	1,264	163,810
December	114,016	4,209	6,442	17,629	1,442	143,738
Total	1,591,501	158,816	74,817	258,234	42,545	2,125,913

** Excluding Stillborn Animals

SECTION 2

Cattle Disposals in Factories by Month and by Gender



	Male	Female	Total
January	68,461	61,733	130,194
February	67,003	61,644	128,647
March	63,405	54,348	117,753
April	73,211	60,022	133,233
May	64,711	56,427	121,138
June	57,477	63,400	120,877
July	65,927	69,072	134,999
August	76,368	58,464	134,832
September	91,680	66,364	158,044
October	95,557	74,156	169,713
November	65,268	62,787	128,055
December	56,039	57,977	114,016
Total	845,107	746,394	1,591,501

Age Profile of Factory Slaughtering for Beef Cattle * by Month and by Gender

Month	0-12 mts		12-18 mts		18-24 mts		24-30 mts		30+ mts		Total
	M	F	M	F	M	F	M	F	M	F	
January	281	238	1,850	1,081	23,034	25,724	6,639	4,507	23,225	18,652	105,231
February	287	232	1,671	1,064	22,303	24,439	8,840	7,082	18,992	15,471	100,381
March	336	231	1,962	1,041	18,203	16,991	15,163	10,712	14,355	12,663	91,657
April	313	283	3,165	1,389	14,866	11,972	25,927	16,677	13,123	13,378	101,093
May	248	146	5,704	2,053	8,569	6,537	24,730	16,925	11,510	14,325	90,747
June	258	173	6,013	2,340	5,510	4,135	24,207	18,453	10,983	18,156	90,228
July	167	174	4,436	2,366	3,986	3,460	32,939	20,022	12,444	21,620	101,614
August	208	217	3,347	2,754	3,577	3,717	39,749	17,830	16,619	18,273	106,291
September	252	231	3,027	3,395	5,339	6,230	42,032	17,010	26,464	23,770	127,750
October	244	285	2,606	3,176	8,698	11,369	31,515	12,372	37,065	29,730	137,060
November	238	310	1,738	1,948	11,040	14,885	13,149	6,338	27,933	25,882	103,461
December	247	232	1,611	1,370	15,629	19,517	7,384	4,739	21,494	20,909	93,132
Total	3,079	2,752	37,130	23,977	140,754	148,976	272,274	152,667	234,207	232,829	1,248,645

Age Profile of Factory Slaughtering for Dairy Cattle ** by Month and by Gender

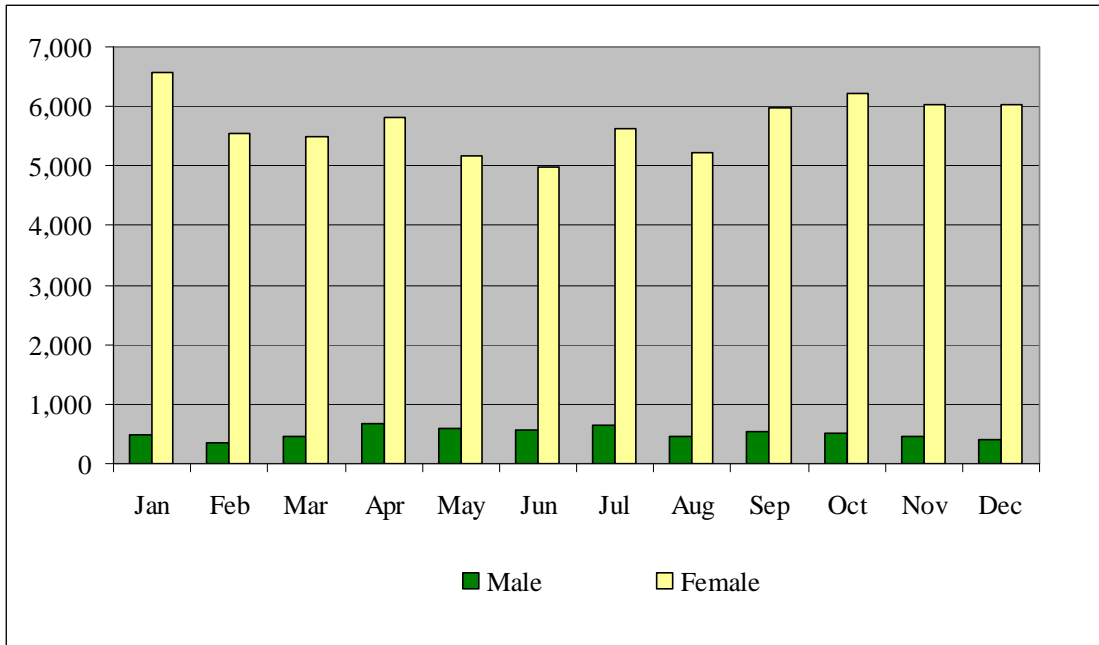
Month	0-12 mts		12-18 mts		18-24 mts		24-30 mts		30+ mts		Total
	M	F	M	F	M	F	M	F	M	F	
January	102	18	146	10	5,638	560	1,922	226	5,624	10,717	24,963
February	87	7	184	13	5,138	501	5,529	485	3,972	12,350	28,266
March	78	19	219	41	2,264	280	8,118	691	2,707	11,679	26,096
April	54	28	363	69	1,720	177	10,923	1,014	2,757	15,035	32,140
May	23	17	827	87	1,357	121	9,301	1,079	2,442	15,137	30,391
June	25	18	899	99	909	66	6,272	1,029	2,401	18,931	30,649
July	30	17	520	149	715	95	7,880	1,271	2,810	19,898	33,385
August	53	22	352	55	986	117	6,723	891	4,754	14,588	28,541
September	97	20	238	42	1,727	162	4,325	513	8,179	14,991	30,294
October	144	19	138	40	2,760	318	2,862	346	9,525	16,501	32,653
November	113	26	102	35	3,184	363	1,587	205	6,184	12,795	24,594
December	206	41	126	22	3,854	416	1,448	136	4,040	10,595	20,884
Total	1,012	252	4,114	662	30,252	3,176	66,890	7,886	55,395	173,217	342,856

* FOR THE PURPOSE OF THIS TABLE BEEF CATTLE ARE DEFINED AS THE PROGENY OF BULLS OF A BEEF BREED

** FOR THE PURPOSE OF THIS TABLE DAIRY CATTLE ARE DEFINED AS THE PROGENY OF BULLS OF A DAIRY BREED

SECTION 3

Cattle Disposals in Local Authority Licensed Abattoirs by Month and by Gender



	Male	Female	Total
January	484	6,561	7,045
February	343	5,541	5,884
March	448	5,498	5,946
April	672	5,822	6,494
May	601	5,157	5,758
June	557	4,978	5,535
July	637	5,631	6,268
August	471	5,223	5,694
September	546	5,982	6,528
October	525	6,218	6,743
November	462	6,018	6,480
December	409	6,033	6,442
Total	6,155	68,662	74,817

Age Profile of Abattoir Slaughterings for Beef Cattle * by Month and by Gender

Month	0 - 6 mts		6 -12 mts		12 - 18 mts		18 - 24 mts		24 mts +		Total
	M	F	M	F	M	F	M	F	M	F	
Jan	0	2	53	267	46	512	267	5,199	69	482	6,897
Feb	2	0	37	268	45	419	166	4,093	77	651	5,758
Mar	0	0	30	275	75	579	221	3,389	100	1,178	5,847
Apr	2	10	48	247	163	1,232	197	2,448	214	1,787	6,348
May	5	4	35	173	213	1,495	94	1,267	204	2,128	5,618
Jun	6	2	24	113	204	1,694	81	898	210	2,191	5,423
Jul	6	13	26	202	156	2,039	76	795	329	2,505	6,147
Aug	3	13	45	334	115	1,831	54	980	222	2,007	5,604
Sep	2	28	38	363	127	1,757	108	1,944	257	1,847	6,471
Oct	6	41	29	620	96	1,301	174	2,991	191	1,193	6,642
Nov	2	18	47	519	92	772	201	3,864	102	776	6,393
Dec	1	5	24	343	31	579	214	4,498	93	547	6,335
Total	35	136	436	3,724	1,363	14,210	1,853	32,366	2,068	17,292	73,483

Age Profile of Abattoir Slaughterings for Dairy Cattle ** by Month and by Gender

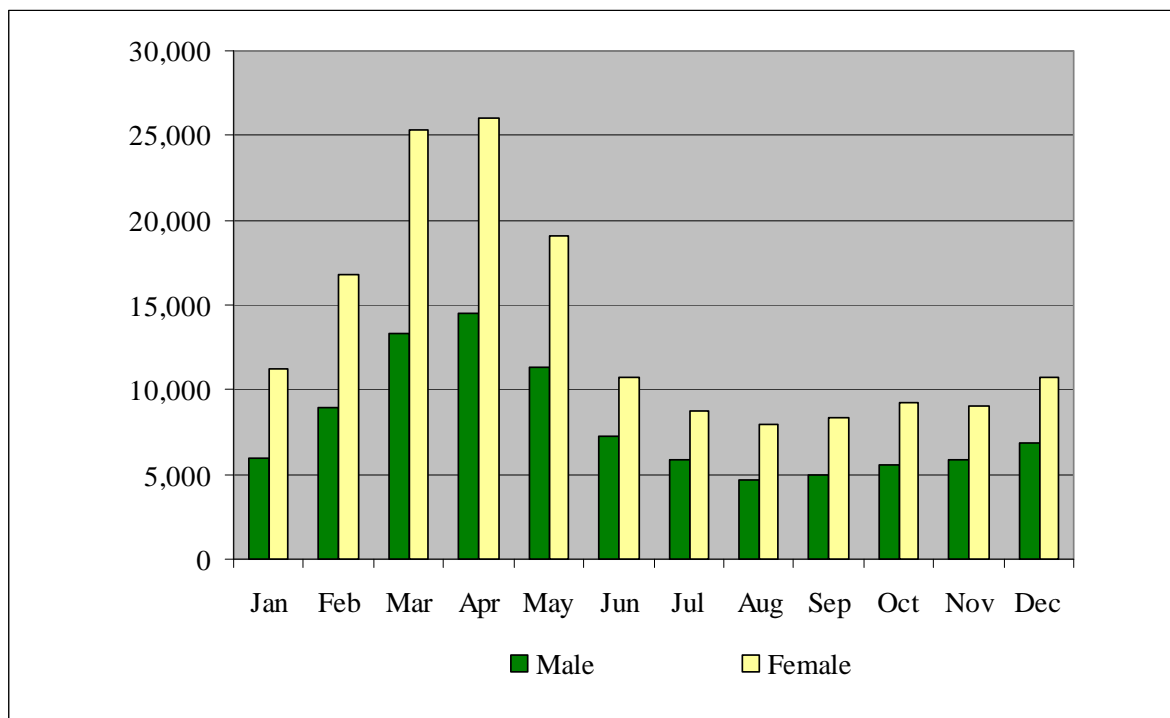
Month	0 - 6 mts		6 -12 mts		12 - 18 mts		18 - 24 mts		24 mts +		Total
	M	F	M	F	M	F	M	F	M	F	
Jan	0	0	1	1	8	0	29	87	11	11	148
Feb	0	0	2	1	1	5	7	74	6	30	126
Mar	1	0	1	2	3	4	9	35	8	36	99
Apr	0	0	1	3	6	13	16	33	25	49	146
May	0	0	1	3	10	8	6	11	33	68	140
Jun	0	0	1	1	12	12	6	11	13	56	112
Jul	0	0	1	0	16	26	5	11	22	40	121
Aug	0	0	2	3	10	14	14	6	6	35	90
Sep	0	0	1	1	8	3	1	18	4	21	57
Oct	0	1	2	3	7	6	12	35	8	27	101
Nov	0	1	2	1	3	6	9	48	4	13	87
Dec	0	0	3	2	13	3	25	52	5	4	107
Total	1	2	18	21	97	100	139	421	145	390	1,334

* FOR THE PURPOSE OF THIS TABLE BEEF CATTLE ARE DEFINED AS THE PROGENY OF BULLS OF A BEEF BREED

** FOR THE PURPOSE OF THIS TABLE DAIRY CATTLE ARE DEFINED AS THE PROGENY OF BULLS OF A DAIRY BREED

SECTION 4

On Farm Deaths * by Month and by Gender



	Male	Female	Total
January	5,994	11,240	17,234
February	8,955	16,748	25,703
March	13,353	25,380	38,733
April	14,459	26,032	40,491
May	11,295	19,045	30,340
June	7,239	10,699	17,938
July	5,822	8,722	14,544
August	4,690	7,925	12,615
September	4,995	8,362	13,357
October	5,539	9,249	14,788
November	5,826	9,036	14,862
December	6,871	10,758	17,629
Total	95,038	163,196	258,234

* Excludes stillborn animals

Age Profile of On Farm Deaths for Male Beef Cattle * by Month

Month	0 - 6 wks	6 wks - 6 mts	6 - 12 mts	12 - 18 mts	18 - 24 mts	24 - 30 mts	30 mts+	Total
January	988	609	1,400	184	519	70	301	4,071
February	2,843	494	1,165	231	400	86	239	5,458
March	5,989	754	1,057	309	367	146	285	8,907
April	6,874	1,525	822	543	302	198	274	10,538
May	4,271	2,381	502	637	193	229	245	8,458
June	1,726	2,520	248	541	93	219	178	5,525
July	904	2,312	218	525	85	190	163	4,397
August	607	1,700	309	470	96	173	171	3,526
September	627	1,363	576	507	184	146	184	3,587
October	674	1,136	973	402	315	124	241	3,865
November	661	958	1,395	336	385	57	216	4,008
December	833	964	1,867	260	486	69	271	4,750
Total	26,997	16,716	10,532	4,945	3,425	1,707	2,768	67,090

Age Profile of On Farm Deaths for Female Beef Cattle * by Month

Month	0 - 6 wks	6 wks - 6 mts	6 - 12 mts	12 - 18 mts	18 - 24 mts	24 - 30 mts	30 mts+	Total
January	835	479	976	133	400	93	3,045	5,961
February	2,181	377	839	151	370	144	3,909	7,971
March	4,702	619	750	282	512	289	6,196	13,350
April	5,490	1,292	567	489	483	445	6,644	15,410
May	3,533	2,035	386	623	275	490	4,574	11,916
June	1,395	2,174	195	522	139	314	1,904	6,643
July	744	1,893	174	479	122	252	1,685	5,349
August	459	1,438	262	389	112	243	1,935	4,838
September	446	1,035	501	402	181	261	2,233	5,059
October	462	854	781	308	290	196	2,564	5,455
November	566	679	1,002	226	353	119	2,194	5,139
December	651	725	1,327	194	430	108	2,596	6,031
Total	21,464	13,600	7,760	4,198	3,667	2,954	39,479	93,122

* FOR THE PURPOSE OF THESE TABLES, BEEF CATTLE ARE DEFINED AS THE PROGENY OF BULLS OF A BEEF BREED

Age Profile of On Farm Deaths for Male Dairy Cattle ** by Month

Month	0 - 6 wks	6 wks - 6 mts	6 - 12 mts	12 - 18 mts	18 - 24 mts	24 - 30 mts	30 mts+	Total
January	907	259	415	95	147	27	73	1,923
February	2,638	204	283	122	131	58	61	3,497
March	3,197	598	189	223	79	92	68	4,446
April	2,009	1,286	149	227	73	112	65	3,921
May	967	1,388	94	213	30	90	55	2,837
June	375	1,073	52	116	25	48	25	1,714
July	193	923	91	116	29	44	29	1,425
August	162	618	190	80	40	43	31	1,164
September	347	462	412	57	68	19	43	1,408
October	475	359	579	71	123	19	48	1,674
November	504	374	658	77	123	24	58	1,818
December	467	451	824	98	176	25	80	2,121
Total	12,241	7,995	3,936	1,495	1,044	601	636	27,948

Age Profile of On Farm Deaths for Female Dairy Cattle ** by Month

Month	0 - 6 wks	6 wks - 6 mts	6 - 12 mts	12 - 18 mts	18 - 24 mts	24 - 30 mts	30 mts+	Total
January	658	152	341	63	258	100	3,707	5,279
February	1,973	159	224	104	294	307	5,716	8,777
March	2,229	410	176	184	265	606	8,160	12,030
April	1,463	735	120	236	149	554	7,365	10,622
May	661	913	75	190	94	413	4,783	7,129
June	265	888	45	144	37	237	2,440	4,056
July	147	843	61	131	27	174	1,990	3,373
August	102	562	169	104	56	104	1,990	3,087
September	202	389	310	54	111	101	2,136	3,303
October	301	272	456	53	153	59	2,500	3,794
November	327	167	483	44	163	52	2,661	3,897
December	345	210	558	46	210	64	3,294	4,727
Total	8,673	5,700	3,018	1,353	1,817	2,771	46,742	70,074

** FOR THE PURPOSE OF THESE TABLES, DAIRY CATTLE ARE DEFINED AS THE PROGENY OF BULLS OF A DAIRY BREED

SECTION 5

Stillborn Calves by Month and by Gender

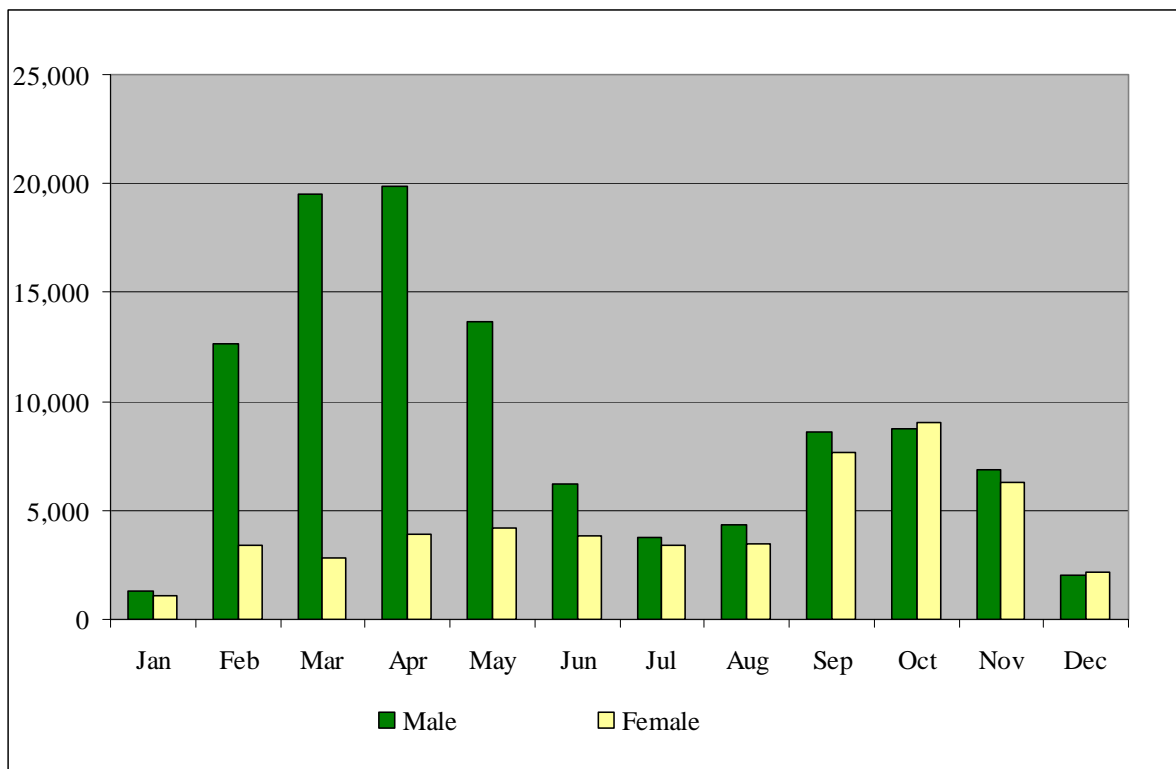
Month	Male	Female	Total
January	2,335	1,786	4,121
February	5,274	4,032	9,306
March	5,730	3,923	9,653
April	3,830	2,776	6,606
May	2,247	1,531	3,778
June	1,054	612	1,666
July	614	432	1,046
August	628	406	1,034
September	799	503	1,302
October	791	536	1,327
November	729	535	1,264
December	841	601	1,442
Total	24,872	17,673	42,545

Stillborn Calves by Month, Gender and Sire

Month	Calves from a beef bull			Calves from a dairy bull			Overall Total
	Male	Female	Total	Male	Female	Total	
January	1,234	923	2,157	1,101	863	1,964	4,121
February	3,272	2,449	5,721	2,002	1,583	3,585	9,306
March	4,407	3,021	7,428	1,323	902	2,225	9,653
April	3,233	2,385	5,618	597	391	988	6,606
May	1,992	1,355	3,347	255	176	431	3,778
June	958	557	1,515	96	55	151	1,666
July	549	383	932	65	49	114	1,046
August	524	341	865	104	65	169	1,034
September	619	377	996	180	126	306	1,302
October	559	359	918	232	177	409	1,327
November	499	367	866	230	168	398	1,264
December	556	407	963	285	194	479	1,442
Total	18,402	12,924	31,326	6,470	4,749	11,219	42,545

SECTION 6

Live Exports by Month and by Gender



Month	Male	Female	Total
January	1,318	1,067	2,385
February	12,649	3,425	16,074
March	19,488	2,830	22,318
April	19,905	3,914	23,819
May	13,676	4,156	17,832
June	6,242	3,821	10,063
July	3,740	3,366	7,106
August	4,360	3,451	7,811
September	8,575	7,683	16,258
October	8,771	9,021	17,792
November	6,874	6,275	13,149
December	2,056	2,153	4,209
Total	107,654	51,162	158,816

Age Profile of Live Exports for Beef Cattle * by Month and by Gender

Month	0-6 wks		6 wks - 6 mts		6 - 12 mts		12 - 18 mts		18 - 24 mts		24 - 30 mts		30 mts +		Total
	M	F	M	F	M	F	M	F	M	F	M	F	M	F	
Jan	1	3	3	11	551	639	63	130	74	144	15	7	2	20	1,663
Feb	144	66	11	14	1,663	1,664	392	350	837	807	192	97	102	125	6,464
Mar	277	63	32	12	1,497	1,295	628	505	549	539	317	190	115	72	6,091
Apr	1,227	204	106	19	1,657	1,339	1,528	1,418	456	490	373	239	3	47	9,106
May	2,003	454	233	66	1,270	958	1,669	1,756	213	311	421	366	23	55	9,798
Jun	931	553	182	80	931	727	975	1,799	98	202	235	181	58	65	7,017
Jul	329	430	93	79	683	776	734	1,469	111	106	418	170	29	37	5,464
Aug	35	122	53	40	1,586	1,020	971	1,534	295	131	963	298	132	71	7,251
Sep	44	68	251	340	2,901	3,186	1,330	2,370	860	595	1,754	499	483	224	14,905
Oct	7	9	208	406	3,145	5,479	1,149	1,187	1,424	993	1,155	352	649	362	16,525
Nov	8	2	126	120	2,583	3,781	403	617	715	893	554	181	742	408	11,133
Dec	6	6	18	23	740	889	91	154	150	306	112	61	194	238	2,988
Total	5,012	1,980	1,316	1,210	19,207	21,753	9,933	13,289	5,782	5,517	6,509	2,641	2,532	1,724	98,405

Age Profile of Live Exports for Dairy Cattle ** by Month and by Gender

Month	0-6 wks		6 wks - 6 mts		6 - 12 mts		12 - 18 mts		18 - 24 mts		24 - 30 mts		30 mts +		Total
	M	F	M	F	M	F	M	F	M	F	M	F	M	F	
Jan	461	1	145	0	0	13	0	5	2	37	0	17	1	40	722
Feb	8,989	13	182	2	7	3	3	0	52	61	55	83	20	140	9,610
Mar	15,264	25	568	6	3	5	5	6	62	39	149	30	22	43	16,227
Apr	12,880	51	1,629	6	3	0	8	3	12	8	22	32	1	58	14,713
May	6,299	22	1,410	8	1	15	15	11	7	18	105	25	7	91	8,034
Jun	2,131	98	551	30	1	4	37	1	14	0	63	22	35	59	3,046
Jul	824	124	344	78	1	3	11	1	13	4	142	37	8	52	1,642
Aug	101	31	67	20	1	5	4	41	26	4	89	81	37	53	560
Sep	447	9	125	16	3	13	14	58	142	128	110	69	111	108	1,353
Oct	424	5	67	3	5	61	30	18	220	77	143	18	145	51	1,267
Nov	1,056	3	309	2	6	5	11	0	161	204	88	22	112	37	2,016
Dec	421	3	208	1	12	1	2	6	49	351	14	29	39	85	1,221
Total	49,297	385	5,605	172	43	128	140	150	760	931	980	465	538	817	60,411

* FOR THE PURPOSE OF THIS TABLE BEEF CATTLE ARE DEFINED AS THE PROGENY OF BULLS OF A BEEF BREED

** FOR THE PURPOSE OF THIS TABLE DAIRY CATTLE ARE DEFINED AS THE PROGENY OF BULLS OF A DAIRY BREED

Destination of Live Exports

Country	Male	Female	Total
Italy	24,414	25,893	50,307
Northern Ireland	22,251	11,240	33,491
Netherlands	30,435	907	31,342
Spain	17,003	10,520	27,523
Belgium	10,005	115	10,120
France	2,536	52	2,588
GB	372	1,618	1,990
Hungary	314	0	314
Greece	310	0	310
Portugal	5	53	58
Germany	9	4	13
Total EU	107,654	50,402	158,056
Russia	0	538	538
Rwanda	0	178	178
Albania	0	44	44
Total Non-EU	0	760	760
Total	107,654	51,162	158,816

Age Profile of Live Exports by Breed

Breed	0 - 6 weeks	6 wks - 6 mts	6 - 12 mts	12 - 18 mts	18 - 24 mts	24 - 30 mts	30 mts +	Total
FR	49,064	5,687	134	260	1,562	1,317	1,229	59,253
CH	56	722	15,021	8,689	4,807	3,042	1,192	33,529
LM	522	536	13,878	8,848	3,535	2,934	1,136	31,389
BB	2,910	631	9,698	3,972	1,022	563	288	19,084
SI	122	78	898	547	527	589	322	3,083
AA	2,036	336	352	382	610	920	433	5,069
Other*	975	210	1,043	679	353	363	557	4,180
HE	989	103	107	135	574	867	454	3,229
Total	56,674	8,303	41,131	23,512	12,990	10,595	5,611	158,816

FR: Friesian

HE: Hereford

CH: Charolais

LM: Limousin

SI: Simmental

AA: Aberdeen Angus

BB: Belgian Blue

* For full list of breeds see appendix

Destination of Live Exports by Age

Country	0 - 6 weeks	6 wks - 6 mts	6 - 12 mts	12 - 18 mts	18 - 24 mts	24 - 30 mts	30 mts +	Total
Italy	410	972	28,749	17,063	2,665	357	91	50,307
N. Ireland	1,381	704	2,889	4,728	8,671	9,772	5,346	33,491
Netherlands	29,679	1,663	0	0	0	0	0	31,342
Spain	13,099	4,270	8,724	1,345	79	6	0	27,523
Belgium	9,583	519	0	1	1	0	16	10,120
France	2,507	38	8	5	16	6	8	2,588
GB	15	110	193	286	929	367	90	1,990
Hungary	0	16	280	18	0	0	0	314
Greece	0	6	266	33	5	0	0	310
Portugal	0	0	21	19	16	2	0	58
Germany	0	5	1	1	1	0	5	13
Total EU	56,674	8,303	41,131	23,499	12,383	10,510	5,556	158,056
Russia	0	0	0	5	503	28	2	538
Rwanda	0	0	0	4	87	34	53	178
Albania	0	0	0	4	17	23	0	44
Total Non-EU	0	0	0	13	607	85	55	760
Total	56,674	8,303	41,131	23,512	12,990	10,595	5,611	158,816



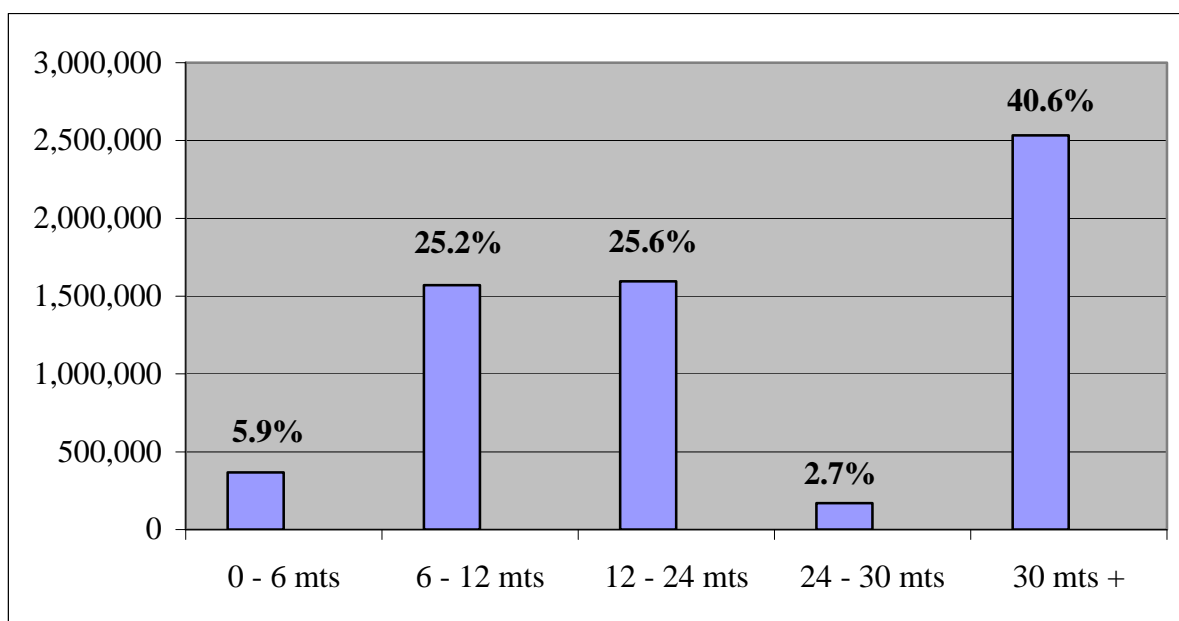
Chapter 4 National Herd Data.

SECTION 1

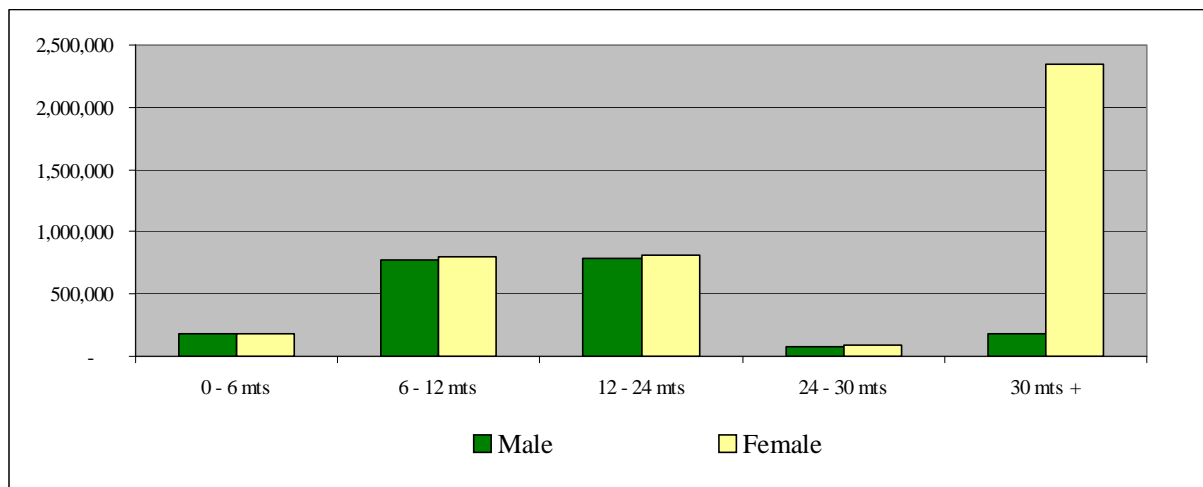
Age Profile of Live Herd at 31/12/2008 by Gender

Gender	0 - 6 mts	6 - 12 mts	12 - 24 mts	24 - 30 mts	30 mts +	Total
Male	185,036	776,424	786,320	72,405	181,721	2,001,906
Female	182,844	793,057	808,572	95,946	2,351,398	4,231,817
Total	367,880	1,569,481	1,594,892	168,351	2,533,119	6,233,723

Cattle Population by Age



Cattle Population by Age and Gender



SECTION 2

Age Profile of Live Herd at 31/12/2008 by County

County	0 - 6 mts	6 - 12 mts	12 - 24 mts	24 - 30 mts	30 mts +	Total	% of Total
Carlow	7,641	21,629	27,377	3,782	34,219	94,648	1.5
Cavan	13,913	55,267	51,103	5,936	96,626	222,845	3.6
Clare	16,931	70,555	54,348	4,658	121,802	268,294	4.3
Cork	42,469	240,629	227,494	18,894	385,344	914,830	14.7
Donegal	12,256	46,650	46,655	4,714	72,168	182,443	2.9
Dublin	1,708	4,348	6,577	1,293	8,324	22,250	0.4
Galway	25,020	103,047	99,249	11,024	164,951	403,291	6.5
Kerry	17,428	76,731	63,788	4,918	147,332	310,197	5.0
Kildare	7,700	21,422	33,030	6,029	42,274	110,455	1.8
Kilkenny	14,812	83,374	86,547	7,532	109,827	302,092	4.8
Laois	15,272	53,224	65,948	7,871	77,799	220,114	3.5
Leitrim	6,430	19,278	12,575	1,713	37,281	77,277	1.2
Limerick	15,995	95,082	86,704	5,862	151,602	355,245	5.7
Longford	7,503	27,655	29,616	3,638	45,978	114,390	1.8
Louth	5,968	14,782	23,630	4,241	29,240	77,861	1.2
Mayo	16,303	68,209	58,661	6,002	115,681	264,856	4.2
Meath	18,836	53,141	74,869	13,052	100,903	260,801	4.2
Monaghan	12,734	48,167	52,936	6,265	78,687	198,789	3.2
Offaly	13,798	50,712	66,515	6,752	69,697	207,474	3.3
Roscommon	13,247	48,703	49,858	5,584	79,527	196,919	3.2
Sligo	7,130	27,957	22,241	2,387	49,285	109,000	1.7
Tipperary	24,610	155,513	156,472	10,883	208,838	556,316	8.9
Waterford	11,007	58,976	55,888	4,504	88,338	218,713	3.5
Westmeath	12,642	44,686	53,302	6,856	75,231	192,717	3.1
Wexford	16,171	56,893	63,679	8,849	96,324	241,916	3.9
Wicklow	10,356	22,851	25,830	5,112	45,841	109,990	1.8
Total	367,880	1,569,481	1,594,892	168,351	2,533,119	6,233,723	

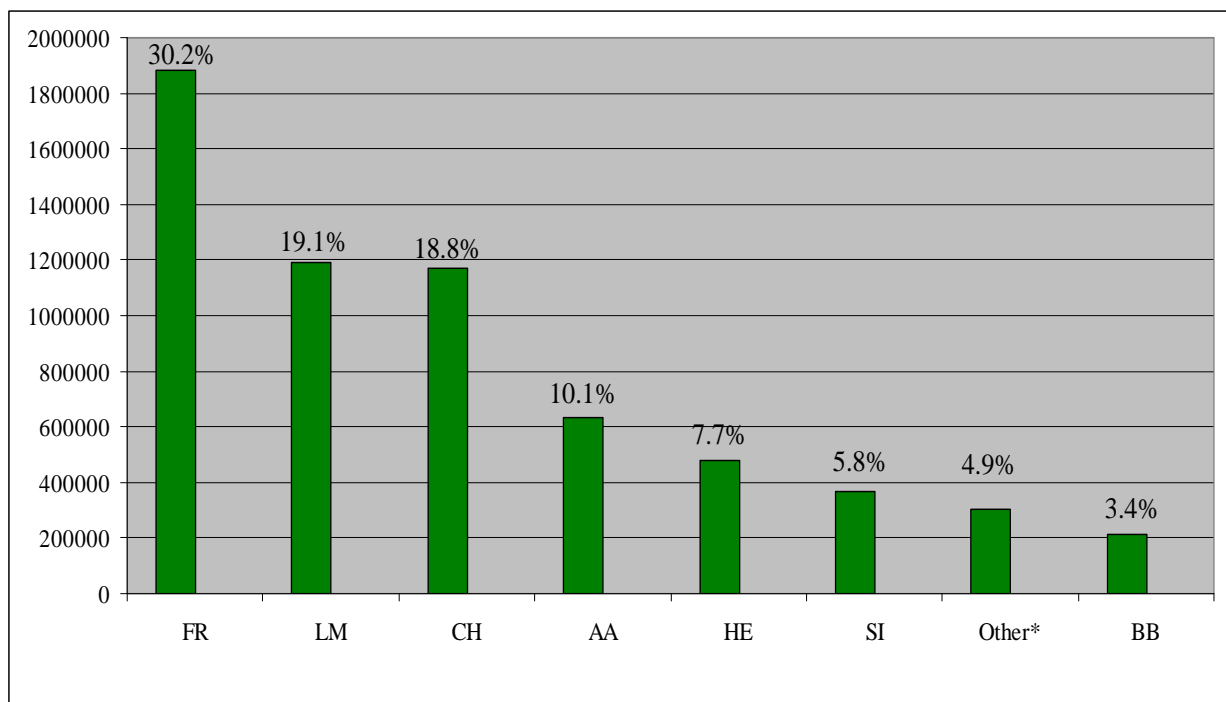
SECTION 3

Age Profile of Live Herd at 31/12/2008 by Breed

Breed	0 - 6 mts	6 - 12 mts	12 - 24 mts	24 - 30 mts	30 mts +	Total	% of Total
FR	65,887	352,686	349,435	41,186	1,071,297	1,880,491	30.2
LM	99,595	322,295	333,281	39,297	394,937	1,189,405	19.1
CH	89,030	340,131	349,692	37,486	354,032	1,170,371	18.8
AA	35,812	207,685	203,585	15,054	170,478	632,614	10.1
HE	21,011	143,452	146,987	10,700	155,013	477,163	7.7
SI	19,254	76,276	87,573	10,398	170,997	364,498	5.8
Other*	16,325	68,638	69,350	7,683	143,787	305,783	4.9
BB	20,966	58,318	54,989	6,547	72,578	213,398	3.4
Total	367,880	1,569,481	1,594,892	168,351	2,533,119	6,233,723	

FR: Friesian **LM:** Limousin **CH:** Charolais
AA: Aberdeen Angus **HE:** Hereford **SI:** Simmental
BB: Belgian Blue

* For a full list of breed codes see appendix



SECTION 4

Age Profile of Live Herd at 31/12/2008 by County and by Breed

County	FR	LM	CH	AA	HE	SI	Other*	BB	Total
Carlow	21,624	26,638	18,975	7,658	5,362	5,968	3,112	5,311	94,648
Cavan	54,075	51,526	57,846	16,487	12,996	10,181	10,133	9,601	222,845
Clare	42,857	88,857	61,829	11,869	25,532	11,064	15,296	10,990	268,294
Cork	477,419	66,873	64,959	118,666	82,438	42,853	47,457	14,165	914,830
Donegal	28,256	37,276	65,319	12,543	2,961	15,472	10,876	9,740	182,443
Dublin	5,014	3,928	5,560	1,893	1,792	1,748	1,266	1,049	22,250
Galway	44,236	128,242	104,308	33,157	32,977	27,923	15,247	17,201	403,291
Kerry	141,676	38,114	36,799	28,358	29,306	11,189	15,840	8,915	310,197
Kildare	23,037	25,824	27,670	7,855	7,013	8,336	6,434	4,286	110,455
Kilkenny	111,774	51,815	44,861	30,438	24,810	21,047	11,054	6,293	302,092
Laois	55,515	49,737	45,688	18,716	14,886	16,632	10,630	8,310	220,114
Leitrim	3,700	21,214	29,571	7,141	2,318	5,125	4,498	3,710	77,277
Limerick	158,857	40,064	29,234	44,506	46,623	10,858	18,132	6,971	355,245
Longford	12,282	28,254	41,164	12,910	5,982	4,764	4,174	4,860	114,390
Louth	21,182	13,427	17,550	5,685	2,232	7,496	6,344	3,945	77,861
Mayo	28,762	68,794	68,807	40,776	7,553	23,268	13,349	13,547	264,856
Meath	78,502	49,208	57,469	24,259	15,835	13,749	11,328	10,451	260,801
Monaghan	53,917	39,466	49,316	12,880	10,353	16,627	7,868	8,362	198,789
Offaly	37,171	48,025	44,716	20,980	22,303	15,861	10,823	7,595	207,474
Roscommon	9,272	54,429	68,665	25,188	6,491	16,333	7,068	9,473	196,919
Sligo	12,988	25,581	27,809	17,168	2,028	9,427	7,458	6,541	109,000
Tipperary	211,776	86,615	67,883	58,829	63,590	27,721	29,451	10,451	556,316
Waterford	96,286	23,295	23,726	26,987	20,893	12,958	11,100	3,468	218,713
Westmeath	31,391	41,874	52,510	23,530	14,728	10,218	10,756	7,710	192,717
Wexford	88,318	54,998	34,128	18,140	10,677	11,093	10,117	14,445	241,916
Wicklow	30,604	25,331	24,009	5,995	5,484	6,587	5,972	6,008	109,990
Total	1,880,491	1,189,405	1,170,371	632,614	477,163	364,498	305,783	213,398	6,233,723

FR: Friesian

LM: Limousin

CH: Charolais

AA: Aberdeen Angus

HE: Hereford

SI: Simmental

BB: Belgian Blue

* For a full list of breed codes see appendix

SECTION 5

Profile of Herd Size at 31/12/2008

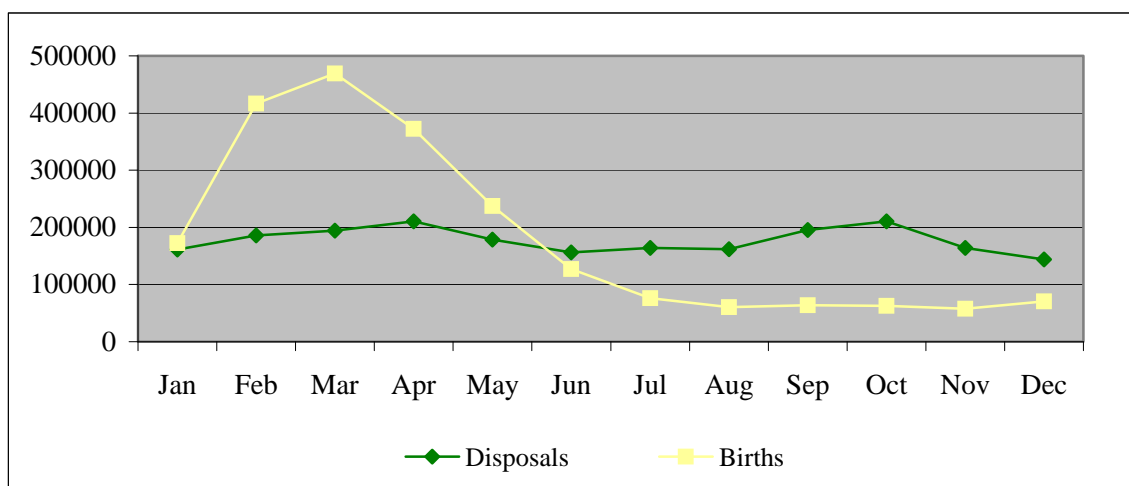
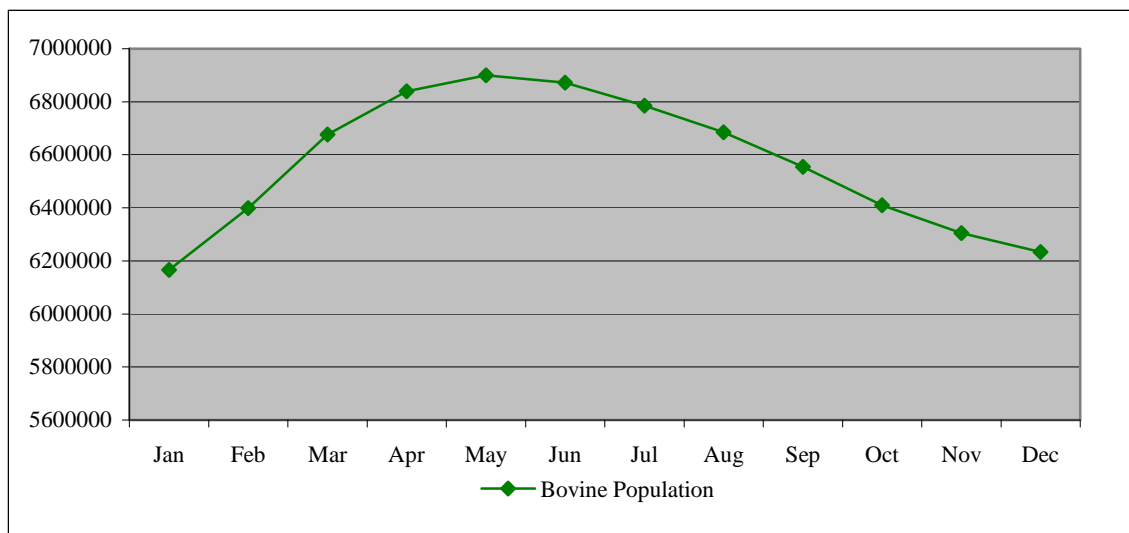
County	Cattle	Herds	Av. Herd Size	Analysis of Herd Size				
				< 25	25 - 49	50 - 74	75 - 99	100+
Carlow	94,648	1,282	73.8	358	275	190	134	325
Cavan	222,845	4,687	47.5	1,861	1,236	645	409	536
Clare	268,294	5,872	45.7	2,263	1,661	907	443	598
Cork	914,830	11,468	79.8	2,970	2,222	1,656	1,286	3,334
Donegal	182,443	5,281	34.5	3,230	1,017	439	210	385
Dublin	22,250	358	62.2	160	81	29	19	69
Galway	403,291	11,168	36.1	5,586	2,936	1,300	610	736
Kerry	310,197	6,341	48.9	2,789	1,424	820	489	819
Kildare	110,455	1,649	67.0	607	308	224	158	352
Kilkenny	302,092	3,036	99.5	547	515	406	356	1,212
Laois	220,114	2,690	81.8	648	563	417	271	791
Leitrim	77,277	3,009	25.7	1,931	714	223	64	77
Limerick	355,245	5,160	68.8	1,559	1,130	722	533	1,216
Longford	114,390	2,336	49.0	896	625	366	191	258
Louth	77,861	1,099	70.8	395	217	140	93	254
Mayo	264,856	9,255	28.6	5,543	2,339	755	305	313
Meath	260,801	3,313	78.7	1,038	693	437	278	867
Monaghan	198,789	4,029	49.3	1,540	1,040	573	355	521
Offaly	207,474	2,944	70.5	815	641	443	358	687
Roscommon	196,919	5,213	37.8	2,392	1,538	646	327	310
Sligo	109,000	3,478	31.3	1,975	896	295	148	164
Tipperary	556,316	6,397	87.0	1,452	1,141	974	722	2,108
Waterford	218,713	2,134	102.5	433	331	266	234	870
Westmeath	192,717	2,857	67.5	851	667	454	285	600
Wexford	241,916	2,959	81.8	677	598	450	348	886
Wicklow	109,990	1,521	72.3	493	328	193	134	373
Total	6,233,723	109,536	56.9	43,009	25,136	13,970	8,760	18,661

Imported Animals in the Live Herd at 31/12/2008

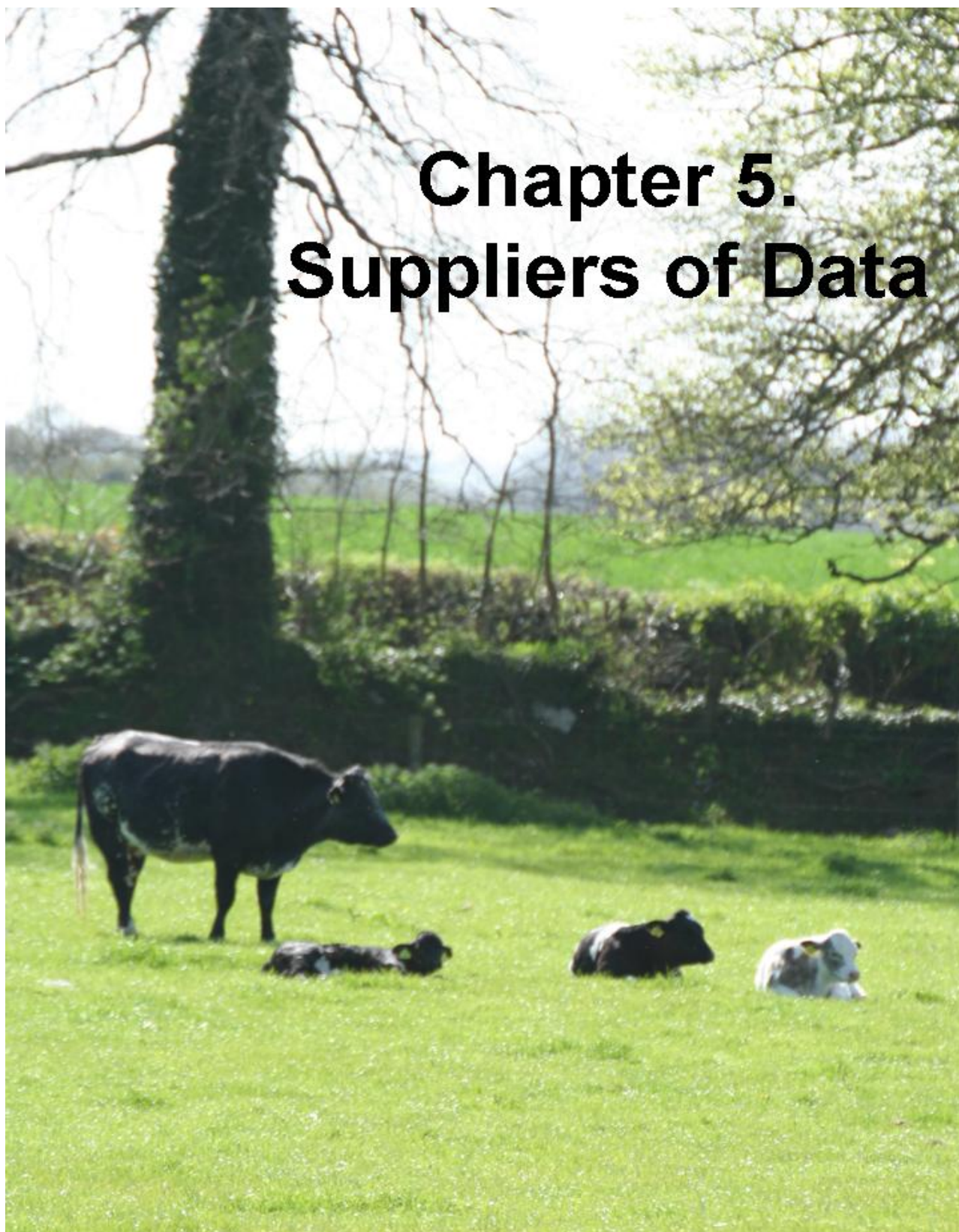
Country	Male	Female	Total
United Kingdom	2,883	3,766	6,649
France	369	3,960	4,329
Netherlands	53	804	857
Germany	8	585	593
Austria	1	343	344
Norway	0	324	324
Denmark	7	295	302
Italy	15	286	301
Belgium	154	64	218
Switzerland	0	161	161
Sweden	3	94	97
Romania	0	34	34
Canada	1	10	11
Total	3,494	10,726	14,220

Bovine Population 2008

	Population	Births	Imports	Disposals	Total	
Start Jan	6,151,212	172,501	3,049	160,979	6,165,783	End Jan
Start Feb	6,165,783	416,403	2,452	185,614	6,399,024	End Feb
Start Mar	6,399,024	469,149	2,255	194,403	6,676,025	End Mar
Start Apr	6,676,025	372,504	1,940	210,643	6,839,826	End Apr
Start May	6,839,826	237,677	1,421	178,846	6,900,078	End May
Start Jun	6,900,078	126,833	1,052	156,079	6,871,884	End Jun
Start Jul	6,871,884	76,129	1,098	163,963	6,785,148	End Jul
Start Aug	6,785,148	60,576	1,280	161,986	6,685,018	End Aug
Start Sep	6,685,018	64,037	1,476	195,489	6,555,042	End Sep
Start Oct	6,555,042	62,867	2,091	210,363	6,409,637	End Oct
Start Nov	6,409,637	57,872	1,335	163,810	6,305,034	End Nov
Start Dec	6,305,034	70,398	2,029	143,738	6,233,723	End Dec



Chapter 5. Suppliers of Data



LIVESTOCK MARTS

Abbeyfeale Mart	Cavan Mart	Loughrea Mart
Ardee Mart	Clifden Mart	Maam Cross Mart
Athenry Mart	Clones Mart	Macroon Mart
Balla Mart	Delvin Mart	Manorhamilton Mart
Ballina Mart	Dingle Mart	Milford Mart
Ballinakill Mart	Donegal Mart	Milltown Mart
Ballinrobe Mart	Dowra Mart	Mohill Mart
Ballinasloe Mart	Dromcollogher Mart	Mountbellew Mart
Ballybay Mart	Drumshanbo Mart	Mountrath Mart
Ballybofey Mart	Dungarvan Mart	Naas Mart
Ballyjamesduff Mart	Edenderry Mart	Nenagh Mart
Ballymahon Mart	Elphin Mart	New Ross Mart
Ballymote Mart	Ennis Mart	Newport Mart
Ballyshannon Mart	Enniscorthy Mart	Portumna Mart
Baltinglass Mart	Ennistymon Mart	Raphoe Mart
Bandon Mart	Fermoy Mart	Rathkeale Mart
Birr Mart	Fethard Mart	Roscommon Mart
Blessington Mart	Gort Mart	Roscrea Mart
Borris Mart	Gortalea Mart	Scariff Mart
Caherciveen Mart	Granard Mart	Sixmilebridge Mart
Cahir Mart	Headford Mart	Skibbereen Mart
Carlow Mart	Inishowen Mart	Templemore Mart
Carnaross Mart	Kanturk Mart	Thurles Mart
Carnew Mart	Kenmare Mart	Tipperary Mart
Carrick-on-Shannon Mart	Kilcullen Mart	Tralee Mart
Carrick-on-Suir Mart	Kilfenora Mart	Tuam Mart
Carrigallen Mart	Kilkenny Mart	Tullamore Mart
Cashel Mart	Kilmallock Mart	Tullow Mart
Castleblaney Mart	Kilrush Mart	Waterford Mart
Castleisland Mart	Kingscourt Mart	
Castlerea Mart	Listowel Mart	

LOCAL AUTHORITY ABATTOIRS

Laurence J. Murphy	Carlow	Richard Walsh	Donegal
Clonmore Meats Ltd	Carlow	Mark Robinson	Donegal
Fergal Harford	Cavan	Cathal McGlynn	Donegal
Patrick Gaynor	Cavan	Stephen Kerr	Donegal
Leonard Lynch	Cavan	Patrick McGettigan	Donegal
Patrick Gaynor	Cavan	Charles Gallagher	Donegal
Raymond Johnston	Cavan	The National Food Centre	Dublin
Anthony McGurren	Cavan	Thomas Lydon	Galway
Robert Richardson	Cavan	John Joe Brady	Galway
James Smith	Cavan	Edna Hayes	Galway
Donoghues Foodfare Ltd	Cavan	Burkes Meats (Kinvara) Ltd	Galway
Kevin Francis Heery	Cavan	Justin Flannery	Galway
Raymond Argue	Cavan	Sean Farrell	Galway
John Donnelly	Cavan	Eugene McEntee	Galway
Edward Joyce	Clare	Hugh O'Donnell	Galway
John Kelly	Clare	Tom Conroy	Galway
Joseph Kelly	Clare	John Burke	Kerry
Denis Corcoran	Clare	John F. Ashe	Kerry
Sean G. Haugh	Clare	Tim Sheahan	Kerry
Brendan Keane	Clare	William O'Leary	Kerry
Kevin Ryan	Clare	Richard G.Behan	Kerry
Martin Haugh	Clare	James Curran	Kerry
Michael Bresnan	Cork	Peter O'Sullivan	Kerry
Patrick Macsweeney	Cork	Stephen J. Cahillane	Kerry
Edmond Clifford	Cork	Christopher M. Houlihan	Kerry
Dan Moloney	Cork	Benny McDonnell	Kerry
Eddie Fitzgerald	Cork	Timothy C. Hennessy	Kerry
Michael Hehir	Cork	Thomas M. Kelly	Kerry
James & Patrick J. Collins	Cork	James J. Walsh	Kerry
Liam O'Driscoll	Cork	Jerry Houlihan	Kerry
Michael Spillane	Cork	Roger J. O'Sullivan	Kerry
John O'Sullivan	Cork	William C. Burke	Kerry
John McCarthy	Cork	John O'Connell	Kerry
John Finn	Cork	Kieran Burns	Kerry
Edward Hanley	Cork	Michael O' Shea	Kerry
Patrick Hegarty	Cork	Pascal Greaney	Kildare
Patrick J. Collins	Cork	James & Niall O'Gorman	Kildare
Christoir O Crualaoui	Cork	James Nolan	Kildare
Patrick O'Donoghue	Cork	Leo Nolan	Kildare
William F. Murphy	Cork	Neil Tynan	Kilkenny
Con Cronin	Cork	Gerry O'Brien	Kilkenny
Malachy O'Sullivan	Cork	Patrick Kenna	Kilkenny
Michael J. O'Neill	Cork	Patrick Mullins	Kilkenny
Patrick Murphy	Cork	June Prendergast	Kilkenny
Michael O'Keeffe	Cork	Pius Hennessy	Laois
Timothy D. Cronin	Cork	Kevin Bracken	Laois
T.G.Mccarthy Ltd.	Cork	Thomas Kenna	Laois
Thomas Walsh	Cork	Michael Tynan	Laois
Daniel Lordan	Cork	John Cahill	Laois

LOCAL AUTHORITY ABATTOIRS Cont.

Tim Murphy	Cork	P. J. Delaney	Laois
Denis Mccarthy	Cork	Michael Keegan	Laois
Jerry Nolan	Cork	Michael Dowling	Laois
Andrew Shiel	Laois	Oliver McCabe	Roscommon
John O'Malley	Leitrim	Joseph Regan	Roscommon
Sean Rooney	Leitrim	Michael Webb	Roscommon
Damien Thornton	Leitrim	Benedict Morris	Roscommon
Douglas G. Boyd	Leitrim	Patrick Roddy	Roscommon
Thomas McHugh	Leitrim	Thomas Hynes	Roscommon
Mary Ellen & Hugh Logan	Leitrim	Cyril McHugh	Roscommon
Sean McMorrow	Leitrim	Padraig Gilligan	Roscommon
Patrick Creamer	Limerick	Ignatius Gannon	Roscommon
Denis O'Sullivan	Limerick	Noel Wynne	Sligo
Gerard O'Shea	Limerick	Patrick G. Burns	Sligo
Noel Hedigan	Limerick	Charles Williams	Tipperary
Michael O'Rourke	Limerick	Edward Lacey	Tipperary
Denis Greaney	Limerick	Paschal Clohosey	Tipperary
Tadgh O'Keeffe	Limerick	Thomas Myles	Tipperary
Nicholas P. Cooke	Limerick	Liam Treacy	Tipperary
Michael & Frank Burke	Limerick	Michael Buckley	Tipperary
Sean Fitzgerald	Limerick	Martin O'Dwyer	Tipperary
Edmund O'Connor	Limerick	Michael & Maurice Whelan	Tipperary
Ronald Rawle	Longford	John O'Dwyer	Tipperary
John Campbell	Longford	James O'Malley	Tipperary
Terry McLaughlin	Longford	Pat Whelan	Tipperary
Desmond Savage	Louth	Patrick Joesph Moloney	Tipperary
William Jennings	Mayo	Andrew English	Tipperary
Sean F. Kelly	Mayo	William G. Fitzgibbon	Tipperary
Philip Gibbons	Mayo	William Gahan	Tipperary
Thomas P. Byrne	Mayo	Robert Colm Lewis	Tipperary
John Moore	Mayo	Joseph Hammersly	Tipperary
Edward Philips	Mayo	Tom O'Donnell	Tipperary
Gerard & Val McGreal	Mayo	Patrick Walsh	Tipperary
Anthony Carolan	Mayo	Kevin Dalton	Tipperary
James Duffy	Mayo	John Hogan	Tipperary
Seamus Hawkshaw	Mayo	Michael McGrath	Waterford
Anthony Heffernan	Mayo	Donal O'Reilly	Waterford
Martin Maloney	Mayo	Robert Flynn	Waterford
James Molloy	Mayo	Sean Dunning	Westmeath
Paddy Reilly	Mayo	Hugh Murray	Westmeath
James P. Gibney	Meath	Joe Tynan	Westmeath
Michael Coogan	Meath	Peter Gillivan	Westmeath
Sean McDermott,	Meath	Declan Lenihan	Westmeath
William Donnelly	Meath	John Horan	Westmeath
Michael & Niall Brogan	Meath	John Gillivan	Westmeath
Gerard & Martin Quinn	Monaghan	Anthony Gavagan	Westmeath
James Short	Monaghan	Camilius Cleary	Westmeath
Hugh & Patrick Maguire	Monaghan	Peter McGuinness	Westmeath
John McGuinness	Monaghan	Eugene McCormack	Westmeath

LOCAL AUTHORITY ABATTOIRS Cont.

Dominick Feely	Offaly	Bernard A. Troy	Westmeath
Michael Healy	Offaly	Cannon & Cole	Westmeath
William Browne	Offaly	Christopher Byrne	Wexford
Paul Boyd	Offaly	Richard Doyle	Wexford
Damian Lynch	Offaly	Matt Finn	Wicklow
Stanley Taylor	Roscommon	Damien Murphy	Wicklow
Myles Doyle	Wicklow	Anthony & Pdraig Farrelly	Wicklow

APPROVED EXPORT POINTS

Ballyjamesduff Mart, Cavan
Dowra Mart, Cavan
Kellehers, Cork
Murphy-Hunter, Cork
Ballybofey/Stranolar Mart, Donegal
Ballyshannon Mart, Donegal
Raphoe Mart, Donegal
Lenehans, Dublin
Gort Mart, Galway
Tuam Mart, Galway
Hallisseys, Kerry
Carrick-on-Shannon Mart, Leitrim
Carrigallen Mart, Leitrim
Drumshanbo Mart, Leitrim
Manorhamilton Mart, Leitrim
Mohill Mart, Leitrim
Casey's, Limerick
Ballymahon Mart, Longford

Granard Mart, Longford
Laragh Livestock, Louth
Ballina Mart, Mayo
Ballinrobe Mart, Mayo
Dixons, Mayo
Carnaross Mart, Meath
O'Connell's Lairage, Meath
Ballybay Mart, Monaghan
Tullamore Mart, Offaly
Castlerea Mart, Roscommon
Elphin Mart, Roscommon
Roscommon Mart, Roscommon
Ballymote Mart, Sligo
Nenagh Mart, Tipperary
Roscrea Mart, Tipperary
TLT, Westmeath
Enniscorthy Mart, Wexford
Scallans, Wicklow

LICENSED KNACKERIES

Moyle Animal Collection Ltd, Carlow	John McGuinness, Longford
Laurence Buggy, Carlow	LKS Disposals, Louth
Colm Mulvaney, Cavan	Finbar & Kevin Donohue, Meath
Kevin Mulvaney, Cavan	Meath Hunt Club
James Lambe, Cavan	John O'Rourke, Meath
Vincent Coffey, Clare	Ward Union Hunt, Meath
Carbery Hunt Kennels, Cork	Oldcastle Laboratories, Meath
William Fitzgerald, Cork	John Costelloe, Offaly
Trustees Duhallow Hunt, Cork	Midland Animal Collection, Roscommon
Liam Duggan, Cork	Tipperary Foxhounds, Tipperary
Bartlemy Road Disposal Service, Cork	Beechfield Products, Tipperary
James Barrett, Cork	Michael Duggan, Tipperary
Collins Brothers, Cork	Patrick Gahan, Tipperary
John Greene, Galway	Richard Keane, Tipperary
Frank Madden, Galway	Golden Vale Hunt, Tipperary
Kildare Hunt Club, Kildare	Suir Vale Harriers, Tipperary
Perry Aylward	David Flanagan, Tipperary
South Kilkenny Foxhounds	Patrick Morrissey, Tipperary
Kilkenny Fallen Stock Service	John Marsh, Tipperary
Charlie Lawless, Laois	Tom O'Meara, Tipperary
John Styles, Laois	Nicholas Hannigan, Waterford
Ward Waste Products, Limerick	K Guinness, Westmeath
County Limerick Hunt Club	Larry Earle, Wexford

FACTORIES

AIBP, Bandon, Cork
AIBP, Cahir, Tipperary
AIBP, Clones, Monaghan
AIBP, Nenagh, Tipperary
AIBP, Rathkeale, Limerick
AIBP, Waterford
Ashbourne Meats, Tipperary
B & F Meats, Kilkenny
Ballaghaderreen Pork, Roscommon
Ballon Meats, Carlow
Bergins, Broadford, Kildare
Dawn Ballaghaderreen, Roscommon
Dawn Ballyhaunis, Mayo
Dawn Meats, Cork
Dawn Meats, Waterford
Dunleavy Meats, Mayo
Eurofarm Foods, Meath
Donegal Meats
Charleville Foods, Cork
Glynns, Limerick
Honeyclover, Kilkenny
Kepak, Athleague, Roscommon
Kepak, Bandon, Cork
Kepak, Clonee, Meath
Kepak, Kilbeggan, Westmeath
Kildare Chilling, Kildare
Liffey Meats, Cavan
Liffey Meats, Hacketstown
Martin Jennings, Mayo
McGavigan Meats, Donegal
Meadow Meats, Laois
Dunbia Meats, Meath
O'Connor Meats, Roscommon
Slaney Meats, Wexford
Tara Farm Foods, Cavan

APPENDIX**Official List of Breed Codes**

AA	ABERDEEN ANGUS	LH	LONGHORN
AK	ANKOLE	LM	LIMOUSIN
AM	AMORICAINE	LR	LINCOLN RED
AN	ANGLER	LU	LUING
AU	AUBRAC	MA	MAINE ANJOU
AY	AYRSHIRE	MH	MARCHIGIANA
BA	BLONDE D'AQUITAUNE	MK	MAKEKORTHORN
BB	BELGIAN BLUE	MO	MONTBELIARDE
BE	BEEFALO	MY	MEUSE RHINE YSSEL
BF	WATER BUFFALO	NO	NORMANDE
BI	BISON	NR	NORWEGIAN RED
BL	BLUE ALBION	OE	OLD ENGLISH
BP	BRETONNE PIE-NOIRE	PI	PIEDMONTESE
BR	BRAHMAN	PT	PARTENAISE
BS	BROWN SWISS	PZ	PINZGUAER
BT	BALATA ROMANEASCA	RB	ROTBUNTE
BW	BRITISH WHITE	RD	DANISH RED
BZ	BAZADAIS	RE	REGGIANA
CB	CANADIAN BLACK	RM	ROMAGNOLA
CH	CHAROLAIS	RP	RED POLL
CI	CHIANINA	SA	SALERS
DE	DEVON	SD	SOUTH DEVON
DX	DEXTER	SG	SWISS GREY
DZ	DWARF ZEBU	SH	SHORTHORN
WE	EAST FINNISH BROWN	SI	SIMMENTAL
EP	ENGLISH PARK	SL	SHETLAND
FE	FRISONA ESPAGNOLA	SR	SWEDISH RED AND WHITE
FR	HOLSTEIN FRIESIAN	ST	STABILISER
GA	GALLOWAY	SU	SUSSEX
GB	GRONINGER BLAARKOP	TT	TARANTAISE-TARINA
GC	GASCONNE	TY	TYRONE BLACK
GL	GLOUCESTER	VA	VAYNOL
GS	MURRAY GREY	VN	VALDOSTANA NERA
GU	GUERNSEY	VO	VOSGIENNE
GV	GELBIEH	WA	WAGYU
GY	GAYAL	WB	WELSH BLACK
HE	HEREFORD	WP	WHITE PARK
HI	HIGHLAND	WW	WELSH WHITE
IM	IRISH MAOL/DROIMEANN	YK	YAK
JE	JERSEY	ZE	ZEBU
KE	KERRY		