

AIM Bovine Statistics Report 2014



Department of
**Agriculture,
Food and the Marine**

An Roinn
**Talmhaíochta,
Bia agus Mara**

AIM Statistics Report 2014

AIM Statistics Report 2014

Animal Identification and Movement (AIM) System

The Department of Agriculture, Food and the Marine maintains cattle traceability records on a central database known as the Animal Identification and Movement System (AIM). The AIM system records all birth, movements and disposals in accordance with EU requirements and therefore traces all bovines from birth to slaughter. The traceability system provides assurances to customers and consumers at home and abroad about the origin and traceability of beef, protects animal and human health and secures and maintains markets for Irish cattle and beef.

The AIM Bovine Statistics Report 2014 provides comprehensive data on calf births, farm-to-farm and mart movements as well as details of cattle slaughtered in factories and abattoirs, live exports and on-farm bovine deaths. The Report is compiled on an annual basis from data provided by farmers, livestock marts, factories, abattoirs and export locations to the AIM database.

The Report contains valuable statistical information for use by interested stakeholders to monitor trends in the beef and dairy sectors. Data and reports generated from the AIM system are provided by the Department to a range of organisations including Bord Bia, Central Statistics Office (CSO), Environmental Protection Agency (EPA), Irish Cattle Breeding Federation (ICBF), Teagasc as well as breed societies, farming organisations and Meat Industry Ireland (MII).

The Report is available in the 2014 Publications section of the Department's website www.agriculture.gov.ie. Updated reports are provided on the website each month on calf registrations, factory slaughterings, live exports and an age profile of the national herd.

Issued by AIM Division, Department of Agriculture, Food and the Marine and collated with the assistance of the Centre for Veterinary Epidemiology and Risk Analysis (CVERA), UCD School of Veterinary Medicine, University College Dublin.

All rights reserved.

No part of this publication may be reproduced, stored in a retrieval system, or transmitted in any form or by any means, electronic, mechanical, photocopying, recording or otherwise without acknowledgement of the source.

Contents

Animal Identification and Movement (AIM) System	3
Chapter 1. Calf Birth Registration Data	7
SECTION 1	8
Calf Births by Month	8
Calf Births by Month and by Gender	8
Calf Births by County, Gender and Sire Type	9
Number of Calves per Breeding Herd	10
Total Number of Beef and Dairy Calves by County	11
SECTION 2	12
Calf Births by Month and Sire Type	12
Calf Births by Month, Gender and Sire Type	12
SECTION 3	13
Calf Births by Month and by Breed of Dam	13
SECTION 4	14
Sire Selection for Beef Dams	14
Sire Selection for Dairy Dams	14
Breed Composition of 2014 Born Calves	15
Chapter 2. Movement Data	17
SECTION 1	18
Mart Movements by Month and by Gender	18
Age Profile of Mart Movements for Beef Cattle by Month and by Gender	19
Age Profile of Mart Movements for Dairy Cattle by Month and by Gender	20
SECTION 2	21
Farm to Farm Movements by Month and by Gender	21
Age Profile of Farm to Farm Movements for Beef Cattle by Month and by Gender	22
Age Profile of Farm to Farm Movements for Dairy Cattle by Month and by Gender	23
SECTION 3	24
All Cattle Movements by Month and by Type	24
All Cattle Movements by Month and by Gender	25

<i>SECTION 4</i>	26
Cattle Imports by Country of Origin and Gender.....	26
Age Profile of Cattle Imports from UK which went for Immediate Slaughter	26
Cattle Imports for further breeding and production by Country of Origin and Age	26
Chapter 3 Disposal of Cattle	27
<i>SECTION 1</i>	28
Overall Summary of Cattle Disposals and On Farm Deaths.....	28
<i>SECTION 2</i>	30
Cattle Disposals in Department Approved Slaughter Plants by Month and by Gender	30
Age Profile of Slaughterings in Department Approved Slaughter Plants for Beef Cattle by Month and by Gender.....	31
Age Profile of Slaughterings in Department Approved Plants for Dairy Cattle by Month and by Gender	32
<i>SECTION 3</i>	33
Cattle Disposals in Local Authority Approved Slaughter Plants by Month and by Gender	33
Age Profile of Slaughterings in Local Authority Approved Slaughter Plants for Beef Cattle by Month and by Gender.....	34
Age Profile of Slaughterings in Local Authority Approved Slaughter Plants for Dairy Cattle by Month and by Gender.....	35
<i>SECTION 4</i>	36
On Farm Deaths by Month and by Gender	36
Age Profile of On Farm Deaths for Male Beef Cattle by Month	37
Age Profile of On Farm Deaths for Female Beef Cattle by Month.....	37
Age Profile of On Farm Deaths for Male Dairy Cattle by Month	38
Age Profile of On Farm Deaths for Female Dairy Cattle by Month.....	38
<i>SECTION 5</i>	39
Stillborn Calves by Month and by Gender	39
Stillborn Calves by Month, Gender and Sire	39
<i>SECTION 6</i>	40
Live Exports by Month and by Gender.....	40
Age Profile of Live Exports for Beef Cattle by Month and by Gender	41
Age Profile of Live Exports for Dairy Cattle by Month and by Gender	42
Destination of Live Exports	43
Age Profile of Live Exports by Breed.....	44
Destination of Live Exports by Age	45

Chapter 4 National Herd Data	47
<i>SECTION 1</i>	48
Age Profile of Live Herd at 31/12/2014 by Gender	48
Cattle Population by Age	48
Cattle Population by Age and Gender	48
<i>SECTION 2</i>	49
Age Profile of Live Herd at 31/12/2014 by County	49
<i>SECTION 3</i>	50
Age Profile of Live Herd at 31/12/2014 by Breed	50
<i>SECTION 4</i>	51
Profile of Live Herd at 31/12/2014 by County and by Breed	51
<i>SECTION 5</i>	52
Profile of Herd Size at 31/12/2014	52
Imported Animals in the Live Herd at 31/12/2014	53
Bovine Density Map	54
Bovine Population 2014 by Month	55
Chapter 5 Suppliers of Data	57
LIVESTOCK MARTS	58
LOCAL AUTHORITY ABATTOIRS	59
APPROVED EXPORT POINTS	61
LICENSED KNACKERIES	62
FACTORIES	62
OFFICIAL LIST OF BREED CODES	63

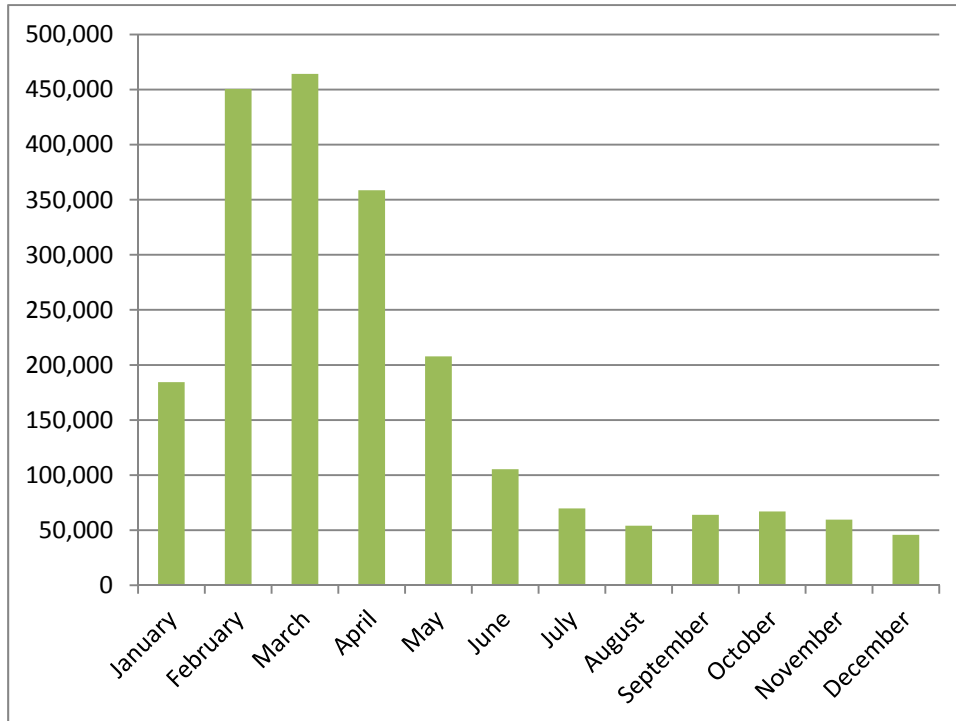
Chapter 1

Calf Birth Registration Data



SECTION 1

Calf Births by Month



Calf Births by Month and by Gender

Month	Male	Female	Total
January	90,143	94,288	184,431
February	228,406	222,264	450,670
March	240,165	224,031	464,196
April	185,170	173,474	358,644
May	107,387	100,390	207,777
June	54,554	50,799	105,353
July	35,800	33,868	69,668
August	27,409	26,656	54,065
September	31,914	32,014	63,928
October	33,849	33,187	67,036
November	30,222	29,306	59,528
December	23,068	22,684	45,752
Total	1,088,087	1,042,961	2,131,048

Calf Births by County, Gender and Sire Type

County	Calves born to Beef Bull			Calves born to Dairy Bull			Overall total	% of Total
	Male	Female	Total	Male	Female	Total		
Carlow	10,490	9,730	20,220	3,890	3,850	7,740	27,960	1.3%
Cavan	29,120	27,754	56,874	9,988	9,909	19,897	76,771	3.6%
Clare	40,867	39,151	80,018	8,413	8,211	16,624	96,642	4.5%
Cork	92,827	85,798	178,625	100,803	98,448	199,251	377,876	17.7%
Donegal	22,387	21,305	43,692	5,936	6,020	11,956	55,648	2.6%
Dublin	2,237	2,166	4,403	582	556	1,138	5,541	0.3%
Galway	55,231	53,032	108,263	8,621	8,439	17,060	125,323	5.9%
Kerry	40,508	37,776	78,284	27,671	27,409	55,080	133,364	6.3%
Kildare	10,751	10,192	20,943	3,841	4,096	7,937	28,880	1.4%
Kilkenny	29,656	27,588	57,244	22,366	21,609	43,975	101,219	4.7%
Laois	21,136	19,788	40,924	11,194	11,110	22,304	63,228	3.0%
Leitrim	12,893	12,522	25,415	570	593	1,163	26,578	1.2%
Limerick	38,035	35,699	73,734	29,601	29,405	59,006	132,740	6.2%
Longford	13,675	13,054	26,729	2,519	2,423	4,942	31,671	1.5%
Louth	7,578	7,046	14,624	4,825	5,060	9,885	24,509	1.2%
Mayo	39,866	37,879	77,745	4,253	4,247	8,500	86,245	4.0%
Meath	22,605	21,300	43,905	15,809	16,138	31,947	75,852	3.6%
Monaghan	21,480	19,841	41,321	10,135	10,267	20,402	61,723	2.9%
Offaly	19,733	18,689	38,422	7,479	7,154	14,633	53,055	2.5%
Roscommon	26,219	24,981	51,200	1,394	1,309	2,703	53,903	2.5%
Sligo	16,900	16,129	33,029	2,206	2,179	4,385	37,414	1.8%
Tipperary	54,301	51,212	105,513	41,742	41,619	83,361	188,874	8.9%
Waterford	23,534	21,852	45,386	21,025	20,691	41,716	87,102	4.1%
Westmeath	20,638	19,528	40,166	6,434	6,599	13,033	53,199	2.5%
Wexford	27,135	25,326	52,461	17,335	17,478	34,813	87,274	4.1%
Wicklow	14,225	13,510	27,735	5,428	5,294	10,722	38,457	1.8%
Totals	714,027	672,848	1,386,875	374,060	370,113	744,173	2,131,048	100.0%

Number of Calves per Breeding Herd

County	Number of Breeding Herds	% of Total Breeding Herds	Number of calves per breeding herd and % of total									
			1-10	%	11-24	%	25-49	%	50-74	%	75+	%
Carlow	917	1.2%	255	27.8%	246	26.8%	238	26.0%	90	9.8%	88	9.6%
Cavan	3,556	4.5%	1,387	39.0%	1,152	32.4%	680	19.1%	192	5.4%	145	4.1%
Clare	4,727	6.0%	1,766	37.4%	1,678	35.5%	921	19.5%	234	5.0%	128	2.7%
Cork	8,190	10.4%	1,820	22.2%	1,681	20.5%	1,718	21.0%	1,280	15.6%	1,691	20.6%
Donegal	4,008	5.1%	2,608	65.1%	932	23.3%	296	7.4%	77	1.9%	95	2.4%
Dublin	218	0.3%	103	47.2%	46	21.1%	34	15.6%	16	7.3%	19	8.7%
Galway	8,118	10.3%	4,276	52.7%	2,375	29.3%	1,073	13.2%	252	3.1%	142	1.7%
Kerry	4,759	6.0%	1,819	38.2%	1,201	25.2%	884	18.6%	431	9.1%	424	8.9%
Kildare	1,040	1.3%	393	37.8%	250	24.0%	223	21.4%	86	8.3%	88	8.5%
Kilkenny	2,194	2.8%	391	17.8%	438	20.0%	549	25.0%	389	17.7%	427	19.5%
Laois	1,770	2.2%	441	24.9%	482	27.2%	421	23.8%	207	11.7%	219	12.4%
Leitrim	2,514	3.2%	1,628	64.8%	705	28.0%	150	6.0%	23	0.9%	8	0.3%
Limerick	3,489	4.4%	998	28.6%	770	22.1%	730	20.9%	474	13.6%	517	14.8%
Longford	1,669	2.1%	686	41.1%	586	35.1%	287	17.2%	70	4.2%	40	2.4%
Louth	706	0.9%	254	36.0%	162	22.9%	133	18.8%	77	10.9%	80	11.3%
Mayo	7,025	8.9%	4,178	59.5%	2,103	29.9%	594	8.5%	92	1.3%	58	0.8%
Meath	2,102	2.7%	702	33.4%	509	24.2%	414	19.7%	200	9.5%	277	13.2%
Monaghan	2,715	3.4%	1,012	37.3%	864	31.8%	531	19.6%	179	6.6%	129	4.8%
Offaly	1,825	2.3%	593	32.5%	500	27.4%	413	22.6%	162	8.9%	157	8.6%
Roscommon	3,756	4.7%	1,858	49.5%	1,282	34.1%	513	13.7%	74	2.0%	29	0.8%
Sligo	2,669	3.4%	1,468	55.0%	857	32.1%	251	9.4%	60	2.2%	33	1.2%
Tipperary	4,259	5.4%	905	21.2%	895	21.0%	1,021	24.0%	627	14.7%	811	19.0%
Waterford	1,581	2.0%	254	16.1%	258	16.3%	366	23.1%	287	18.2%	416	26.3%
Westmeath	1,926	2.4%	633	32.9%	564	29.3%	446	23.2%	150	7.8%	133	6.9%
Wexford	2,158	2.7%	449	20.8%	478	22.2%	565	26.2%	325	15.1%	341	15.8%
Wicklow	1,227	1.6%	366	29.8%	357	29.1%	267	21.8%	117	9.5%	120	9.8%
Totals	79,118	100%	31,243	39.5%	21,371	27.0%	13,718	17.3%	6,171	7.8%	6,615	8.4%

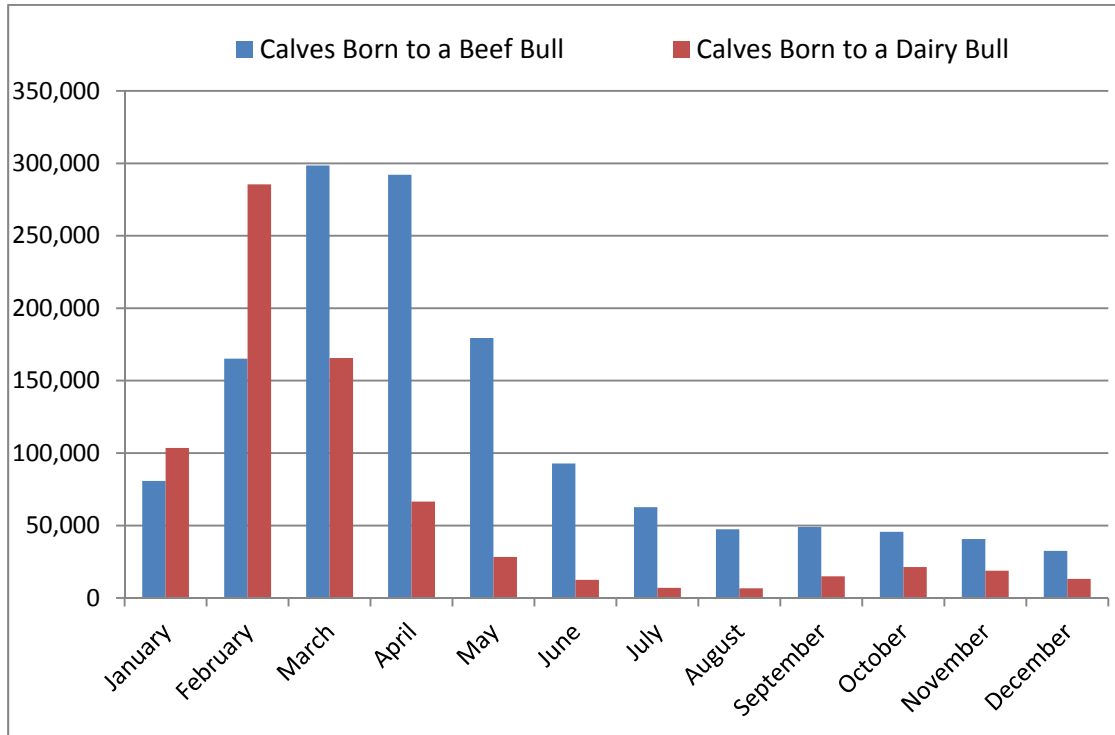
Total Number of Beef and Dairy Calves by County

For the purposes of this table, Beef and Dairy calves are defined by breed of dam

County	Beef Calves	% Beef		Dairy Calves	% Dairy	Total Calves
Carlow	16,301	58.30%		11,659	41.70%	27,960
Cavan	43,592	56.78%		33,179	43.22%	76,771
Clare	68,080	70.45%		28,562	29.55%	96,642
Cork	74,389	19.69%		303,487	80.31%	377,876
Donegal	38,084	68.44%		17,564	31.56%	55,648
Dublin	3,560	64.25%		1,981	35.75%	5,541
Galway	97,167	77.53%		28,156	22.47%	125,323
Kerry	42,498	31.87%		90,866	68.13%	133,364
Kildare	17,653	61.13%		11,227	38.87%	28,880
Kilkenny	35,482	35.05%		65,737	64.95%	101,219
Laois	32,022	50.65%		31,206	49.35%	63,228
Leitrim	24,575	92.46%		2,003	7.54%	26,578
Limerick	34,440	25.95%		98,300	74.05%	132,740
Longford	24,162	76.29%		7,509	23.71%	31,671
Louth	11,844	48.33%		12,665	51.67%	24,509
Mayo	71,224	82.58%		15,021	17.42%	86,245
Meath	32,895	43.37%		42,957	56.63%	75,852
Monaghan	30,103	48.77%		31,620	51.23%	61,723
Offaly	30,880	58.20%		22,175	41.80%	53,055
Roscommon	48,967	90.84%		4,936	9.16%	53,903
Sligo	29,503	78.86%		7,911	21.14%	37,414
Tipperary	60,240	31.89%		128,634	68.11%	188,874
Waterford	24,699	28.36%		62,403	71.64%	87,102
Westmeath	33,784	63.50%		19,415	36.50%	53,199
Wexford	33,975	38.93%		53,299	61.07%	87,274
Wicklow	21,794	56.67%		16,663	43.33%	38,457
Totals	981,913	46.08%		1,149,135	53.92%	2,131,048

SECTION 2

Calf Births by Month and Sire Type



Calf Births by Month, Gender and Sire Type

	Calves born to a Beef Bull				Calves born to a Dairy Bull			
Month	Male	Female	Total		Male	Female	Total	Overall Total
January	40,998	39,839	80,837		49,145	54,449	103,594	184,431
February	84,458	80,774	165,232		143,948	141,490	285,438	450,670
March	154,003	144,556	298,559		86,162	79,475	165,637	464,196
April	151,214	140,908	292,122		33,956	32,566	66,522	358,644
May	92,884	86,530	179,414		14,503	13,860	28,363	207,777
June	48,229	44,602	92,831		6,325	6,197	12,522	105,353
July	32,323	30,350	62,673		3,477	3,518	6,995	69,668
August	24,186	23,200	47,386		3,223	3,456	6,679	54,065
September	24,852	24,077	48,929		7,062	7,937	14,999	63,928
October	23,378	22,339	45,717		10,471	10,848	21,319	67,036
November	20,933	19,737	40,670		9,289	9,569	18,858	59,528
December	16,569	15,936	32,505		6,499	6,748	13,247	45,752
Total	714,027	672,848	1,386,875		374,060	370,113	744,173	2,131,048

SECTION 3

Calf Births by Month and by Breed of Dam

Month	FR	LM	CH	SI	AA	HE	BB	SH	MO	SA	RB	BA	JE	MY	Other	Total
January	117,142	20,342	13,210	7,891	6,259	4,609	3,592	1,909	1,598	1,106	772	586	2,818	277	2,320	184,431
February	338,682	25,247	16,764	10,486	10,242	7,183	4,334	3,082	5,283	1,613	2,990	818	16,154	727	7,065	450,670
March	273,238	53,606	36,948	19,837	21,899	15,535	8,294	5,627	5,373	3,071	2,727	1,476	9,362	743	6,460	464,196
April	148,825	66,015	46,597	20,566	24,095	17,183	9,885	7,026	3,618	3,204	1,295	1,800	3,486	429	4,620	358,644
May	68,994	44,066	31,962	12,823	16,603	11,601	6,895	4,971	2,025	2,067	574	1,200	1,101	231	2,664	207,777
June	31,483	22,685	17,445	7,114	8,976	6,429	3,621	2,605	1,006	1,072	250	609	468	125	1,465	105,353
July	16,777	16,655	12,030	4,918	6,655	4,739	2,793	1,723	571	808	171	477	246	57	1,048	69,668
August	12,337	14,119	8,726	4,215	4,931	3,720	2,086	1,146	320	723	100	490	215	38	899	54,065
September	19,824	15,361	8,394	4,713	5,024	3,730	2,417	1,017	377	771	127	527	418	98	1,130	63,928
October	27,388	13,849	7,723	4,450	3,936	3,009	2,270	895	474	689	79	620	406	99	1,149	67,036
November	24,867	12,132	6,754	3,947	3,421	2,646	1,985	728	543	629	89	406	360	69	952	59,528
December	18,184	9,268	5,667	3,330	2,753	2,045	1,593	608	411	494	99	350	277	44	629	45,752
Total	1,097,741	313,345	212,220	104,290	114,794	82,429	49,765	31,337	21,599	16,247	9,273	9,359	35,311	2,937	30,401	2,131,048

FR: Friesian

LM: Limousin

CH: Charolais

SI: Simmental

AA: Aberdeen Angus

HE: Hereford

BB: Belgian Blue

SH: Shorthorn

MO: Montbelliarde

SA: Salers

RB: Rotbunte

BA: Blonde D'Aquitaine

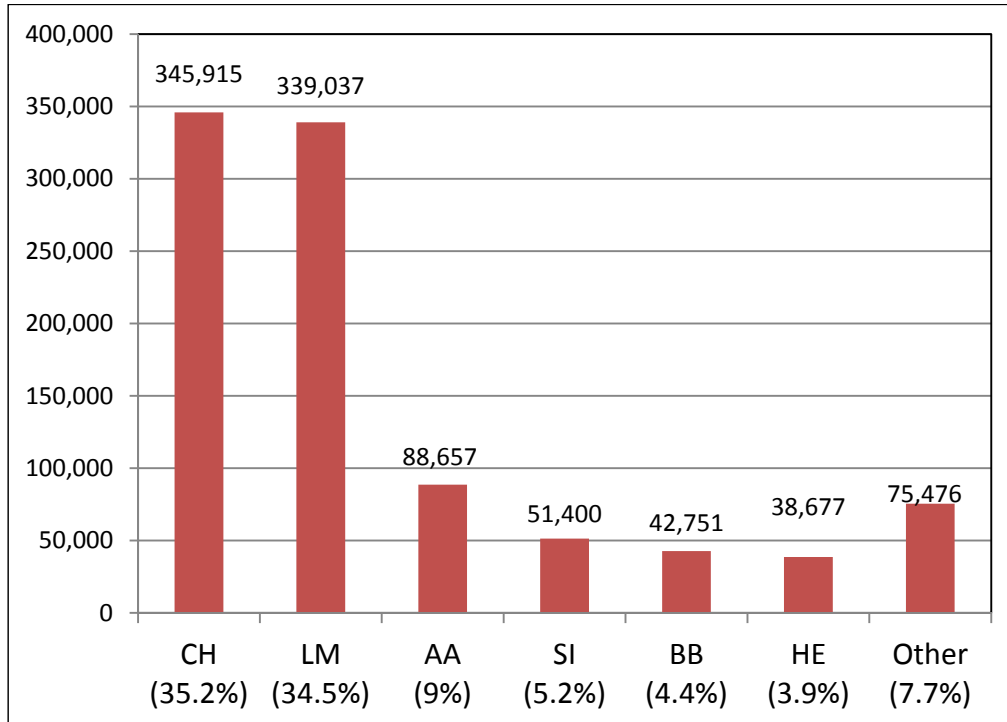
JE: Jersey

MY: Meuse Rhine Yssel

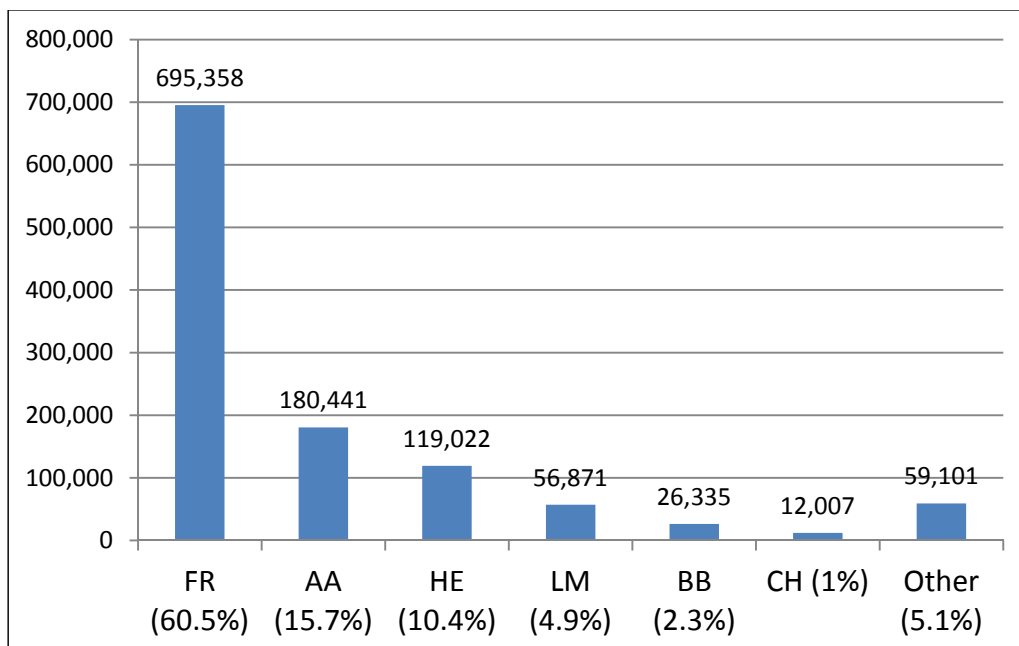
* For full list of breed codes see Appendix

SECTION 4

Sire Selection for Beef Dams



Sire Selection for Dairy Dams



Breed Composition of 2014 Born Calves

		Breed of Dam															Total
	Breed	AA	BA	BB	CH	FR	HE	JE	LM	MO	MY	RB	SA	SH	SI	Other	
Breed of Sire	AA	37,496	321	4,147	9,275	174,730	7,846	3,365	14,579	2,682	399	1,377	681	3,219	5,691	3,290	269,098
	BA	602	2,198	903	1,302	904	444	27	2,413	82	6	16	149	148	779	210	10,183
	BB	3,803	1,138	5,407	4,952	25,570	2,293	424	17,829	1,165	115	219	583	1,023	3,601	964	69,086
	CH	29,611	2,132	13,924	127,226	11,601	23,047	212	95,453	1,313	123	187	6,275	8,977	35,661	2,180	357,922
	FR	1,918	11	639	258	666,410	1,148	21,356	939	5,499	735	2,901	54	1,273	863	7,762	711,766
	HE	4,448	126	1,079	2,804	115,987	17,720	1,767	4,331	2,337	313	909	230	1,633	2,499	1,516	157,699
	JE	55	0	3	7	14,561	14	5,300	14	143	14	158	2	21	6	606	20,904
	LM	29,186	2,596	19,848	54,950	55,412	24,217	727	159,898	2,924	235	619	3,745	6,716	31,418	3,417	395,908
	MO	68	8	19	25	2,287	27	54	69	3,706	19	94	2	41	95	84	6,598
	MY	6	1	3	1	316	13	8	5	34	658	190	3	16	12	14	1,280
	RB	30	0	5	6	2,196	15	119	10	201	46	1,982	1	34	21	163	4,829
	SA	936	99	412	1,344	2,165	551	48	1,852	145	10	107	3,550	310	770	203	12,502
	SH	1,050	33	394	992	3,039	574	158	1,299	110	59	64	75	6,273	577	402	15,099
	SI	3,849	314	1,809	7,332	12,488	3,616	122	10,268	774	117	231	514	1,198	21,018	523	64,173
	Other	1,736	382	1,173	1,746	10,075	904	1,624	4,386	484	88	219	383	455	1,279	9,067	34,001
	Total	114,794	9,359	49,765	212,220	1,097,741	82,429	35,311	313,345	21,599	2,937	9,273	16,247	31,337	104,290	30,401	2,131,048

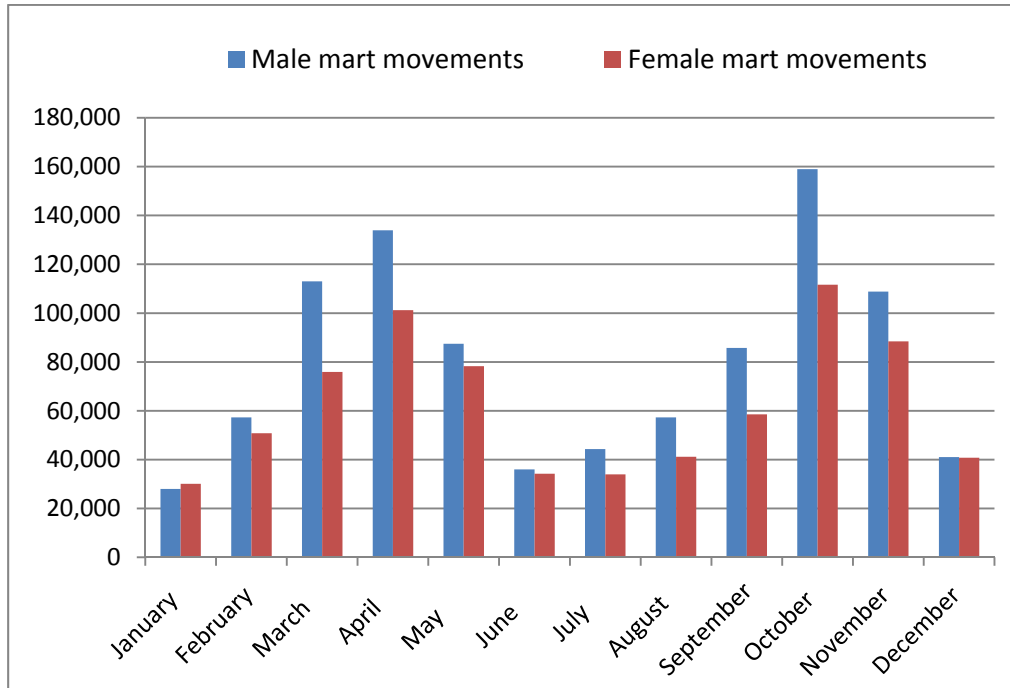
Chapter 2

Movement Data



SECTION 1

Mart Movements by Month and by Gender



Month	Male	Female	Total
January	28,013	30,088	58,101
February	57,293	50,824	108,117
March	113,043	75,932	188,975
April	133,910	101,237	235,147
May	87,473	78,271	165,744
June	36,027	34,247	70,274
July	44,320	33,996	78,316
August	57,334	41,163	98,497
September	85,781	58,523	144,304
October	158,972	111,642	270,614
November	108,787	88,443	197,230
December	41,049	40,820	81,869
Total	952,002	745,186	1,697,188

Note: These figures include 158,417 unsold movements

Age Profile of Mart Movements for Beef Cattle by Month and by Gender

For the purposes of this table, Beef Cattle are defined as the progeny of bulls of a beef breed

Month	0 - 6 wks		6 wks - 6 Mts		6 - 12 Mts		12 - 18 Mts		18 - 24 Mts		24 - 30 Mts		30 Mts +		Total
	M	F	M	F	M	F	M	F	M	F	M	F	M	F	
January	964	757	804	541	8,445	6,407	2,305	2,255	5,243	7,435	686	740	1,389	6,147	44,118
February	4,177	3,183	728	660	13,023	11,114	4,477	4,953	8,259	11,564	1,433	1,706	1,798	8,679	75,754
March	13,545	10,787	994	811	18,136	13,306	12,880	11,061	13,411	12,140	5,911	3,914	2,540	10,127	129,563
April	15,754	13,172	1,835	1,530	19,749	14,347	28,673	24,466	15,031	11,367	13,560	8,057	2,862	10,825	181,228
May	12,001	9,747	2,636	2,183	11,473	8,024	21,927	19,219	6,726	5,926	9,376	7,780	2,064	12,200	131,282
June	5,220	4,344	2,056	1,701	4,171	2,582	9,072	8,035	1,833	1,961	3,754	3,873	865	6,663	56,130
July	2,410	2,049	1,867	1,522	5,490	3,517	13,462	10,766	2,492	2,465	6,001	4,298	1,166	5,666	63,171
August	1,161	999	2,495	1,846	8,766	4,983	16,510	13,383	4,986	4,665	8,189	5,212	1,752	6,640	81,587
September	712	645	6,581	4,400	17,739	9,822	19,503	14,741	12,950	10,553	8,943	6,001	3,244	8,130	123,964
October	1,041	801	14,525	8,950	46,713	28,509	22,655	17,392	32,803	25,885	9,480	6,128	6,482	15,700	237,064
November	897	727	8,419	5,521	33,952	24,165	10,704	8,402	26,096	20,473	4,783	3,199	5,643	15,438	168,419
December	756	666	2,594	1,827	12,182	8,750	3,406	3,023	9,120	8,840	1,477	1,334	2,553	8,893	65,421
Total	58,638	47,877	45,534	31,492	199,839	135,526	165,574	137,696	138,950	123,274	73,593	52,242	32,358	115,108	1,357,701

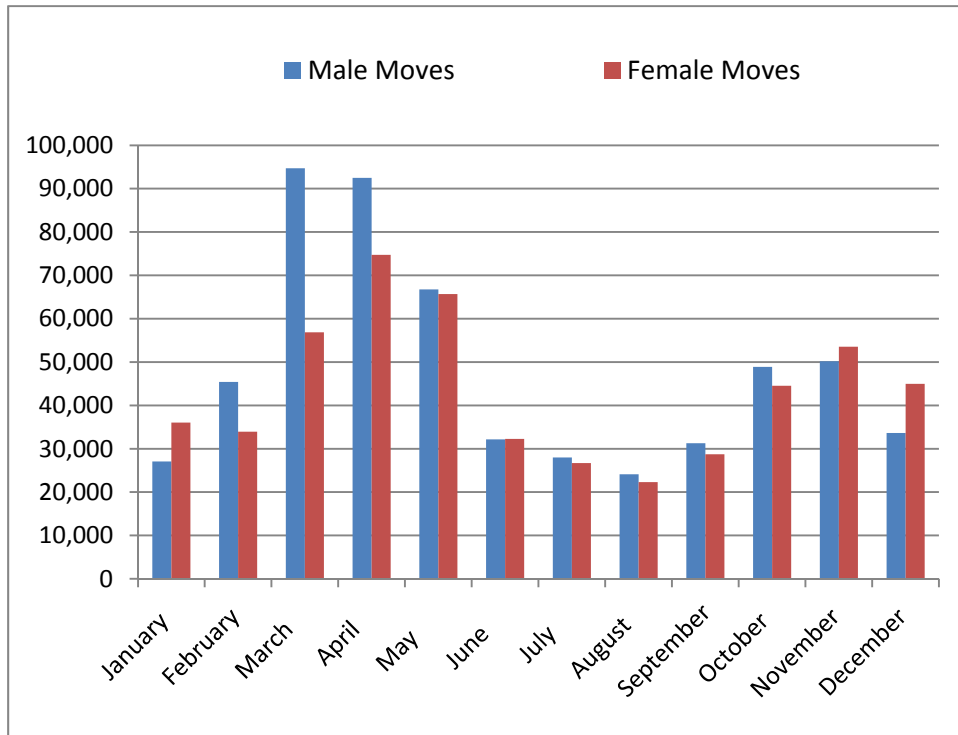
Age Profile of Mart Movements for Dairy Cattle by Month and by Gender

For the purposes of this table, Dairy Cattle are defined as the progeny of bulls of a dairy breed

Month	0 - 6 wks		6 wks - 6 Mts		6 - 12 Mts		12 - 18 Mts		18 - 24 Mts		24 - 30 Mts		30 Mts +		Total
	M	F	M	F	M	F	M	F	M	F	M	F	M	F	
January	2,381	60	588	26	1,266	73	400	24	2,585	701	481	239	476	4,683	13,983
February	16,668	287	471	22	1,071	125	1,248	131	2,087	952	1,407	956	446	6,492	32,363
March	31,351	1,095	1,073	92	1,017	103	5,038	506	1,968	693	4,635	2,499	544	8,798	59,412
April	14,010	1,387	2,244	281	906	152	10,153	1,302	1,818	519	6,684	3,290	631	10,542	53,919
May	5,807	1,025	1,985	315	616	93	6,886	1,102	1,051	267	4,300	1,742	625	8,648	34,462
June	2,237	459	1,120	222	276	78	2,745	346	373	52	1,927	562	378	3,369	14,144
July	857	164	934	128	265	26	4,839	233	1,067	80	2,928	411	542	2,671	15,145
August	442	62	578	70	581	33	3,753	214	4,246	155	2,425	291	1,450	2,610	16,910
September	544	41	454	73	1,333	74	2,089	209	8,927	332	1,207	255	1,555	3,247	20,340
October	1,360	39	480	73	3,549	226	1,686	176	14,597	773	1,092	291	2,509	6,699	33,550
November	1,557	39	343	57	3,580	224	1,138	92	9,048	912	663	226	1,964	8,968	28,811
December	1,248	38	223	21	2,026	174	442	59	3,877	764	274	130	871	6,301	16,448
Total	78,462	4,696	10,493	1,380	16,486	1,381	40,417	4,394	51,644	6,200	28,023	10,892	11,991	73,028	339,487

SECTION 2

Farm to Farm Movements by Month and by Gender



Month	Male	Female	Total
January	27,060	36,054	63,114
February	45,423	33,952	79,375
March	94,711	56,856	151,567
April	92,497	74,748	167,245
May	66,768	65,669	132,437
June	32,177	32,272	64,449
July	27,998	26,712	54,710
August	24,102	22,293	46,395
September	31,278	28,736	60,014
October	48,886	44,518	93,404
November	50,168	53,544	103,712
December	33,634	44,966	78,600
Total	574,702	520,320	1,095,022

Age Profile of Farm to Farm Movements for Beef Cattle by Month and by Gender

For the purposes of this table, Beef Cattle are defined as the progeny of bulls of a beef breed

Month	0 - 6 wks		6 wks - 6 Mts		6 - 12 Mts		12 - 18 Mts		18 - 24 Mts		24 - 30 Mts		30 Mts +		Total
	M	F	M	F	M	F	M	F	M	F	M	F	M	F	
January	1,451	1,295	817	684	6,487	5,309	1,776	1,605	3,284	4,410	427	538	1,120	4,710	33,913
February	4,679	4,348	541	544	5,287	4,918	1,893	1,935	2,568	3,113	366	611	625	4,040	35,468
March	14,694	13,724	799	749	6,736	5,410	5,054	4,152	3,432	3,009	1,495	991	871	4,605	65,721
April	18,006	17,350	2,100	1,949	7,495	5,986	11,837	9,810	4,589	3,089	3,746	2,206	1,407	6,091	95,661
May	12,713	12,878	3,996	3,865	4,974	3,879	11,104	9,357	2,550	2,047	2,803	2,640	1,558	6,857	81,221
June	5,051	4,938	3,834	3,389	2,278	1,623	6,166	4,646	1,072	880	1,408	1,482	916	3,551	41,234
July	2,427	2,519	3,564	3,176	2,108	1,525	6,097	4,701	1,075	887	1,422	1,319	780	2,885	34,485
August	1,371	1,235	3,001	2,340	2,800	1,678	5,349	3,527	1,317	1,099	1,346	1,131	819	2,510	29,523
September	928	858	3,717	2,987	4,268	3,123	5,754	3,979	3,525	2,469	1,296	1,499	891	3,238	38,532
October	1,366	1,299	5,099	3,958	11,782	8,602	4,814	3,739	5,957	5,164	1,413	1,304	1,331	4,903	60,731
November	1,480	1,407	3,362	2,738	13,229	10,790	3,390	2,779	7,005	6,478	1,187	1,044	1,771	6,346	63,006
December	1,459	1,208	1,707	1,365	8,604	7,720	1,894	1,560	4,701	4,980	597	742	1,384	6,039	43,960
Total	65,625	63,059	32,537	27,744	76,048	60,563	65,128	51,790	41,075	37,625	17,506	15,507	13,473	55,775	623,455

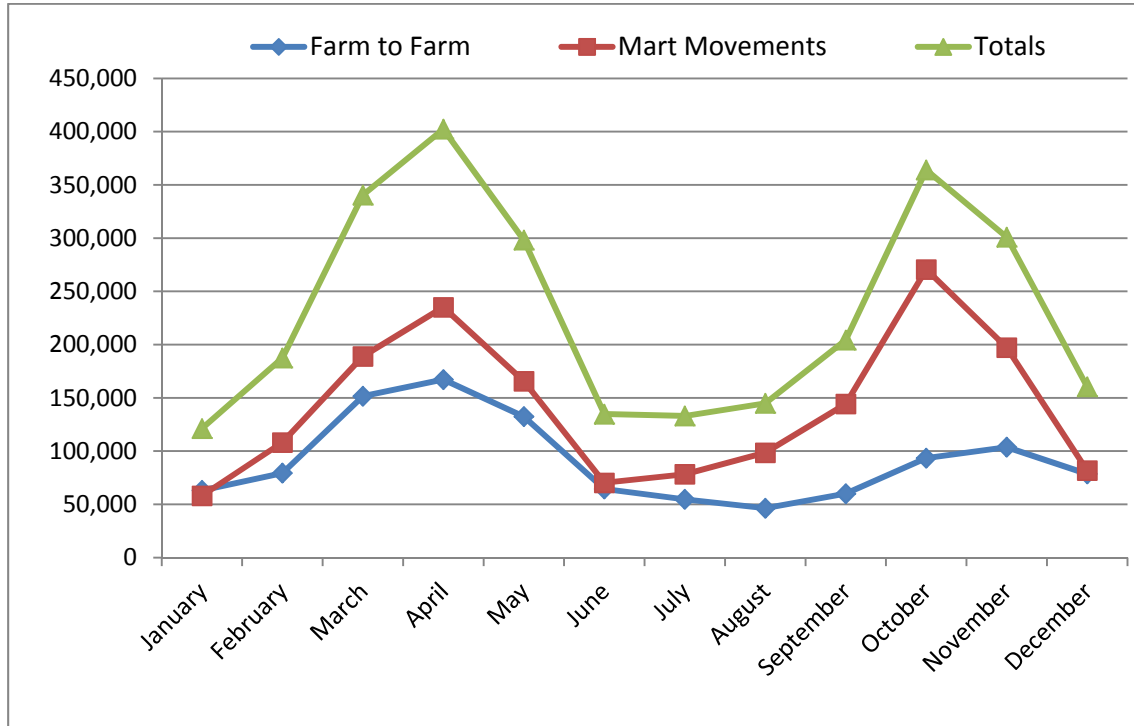
Age Profile of Farm to Farm Movements for Dairy Cattle by Month and by Gender

For the purposes of this table, Dairy Cattle are defined as the progeny of bulls of a dairy breed

Month	0 - 6 wks		6 wks - 6 Mts		6 - 12 Mts		12 - 18 Mts		18 - 24 Mts		24 - 30 Mts		30 Mts +		Total
	M	F	M	F	M	F	M	F	M	F	M	F	M	F	
January	3,280	262	1,381	263	3,060	2,460	620	449	2,543	6,335	361	625	453	7,109	29,201
February	22,874	1,403	1,080	199	1,506	1,128	1,662	945	1,411	2,765	752	1,613	179	6,390	43,907
March	51,787	5,301	2,107	505	890	875	3,802	4,022	942	1,190	1,788	3,232	314	9,091	85,846
April	23,805	3,714	5,424	1,724	1,150	760	8,441	7,276	877	988	3,305	3,614	315	10,191	71,584
May	9,028	2,055	6,548	3,354	1,010	660	7,112	5,846	689	704	2,239	3,057	444	8,470	51,216
June	2,773	652	3,625	2,956	432	387	2,821	2,271	296	223	1,231	1,307	274	3,967	23,215
July	1,185	277	3,584	2,354	763	448	3,059	1,969	636	352	981	1,044	317	3,256	20,225
August	540	172	1,723	1,483	1,344	1,046	1,619	1,142	1,663	1,067	651	817	559	3,046	16,872
September	1,020	120	1,211	698	2,869	1,660	1,198	694	3,488	2,175	374	504	739	4,732	21,482
October	4,277	280	771	346	4,525	2,301	816	457	5,449	4,407	432	548	854	7,210	32,673
November	5,059	416	745	196	5,391	3,744	898	508	5,394	7,369	337	503	920	9,226	40,706
December	3,733	215	979	149	3,886	3,872	699	406	3,247	7,031	231	507	513	9,172	34,640
Total	129,361	14,867	29,178	14,227	26,826	19,341	32,747	25,985	26,635	34,606	12,682	17,371	5,881	81,860	471,567

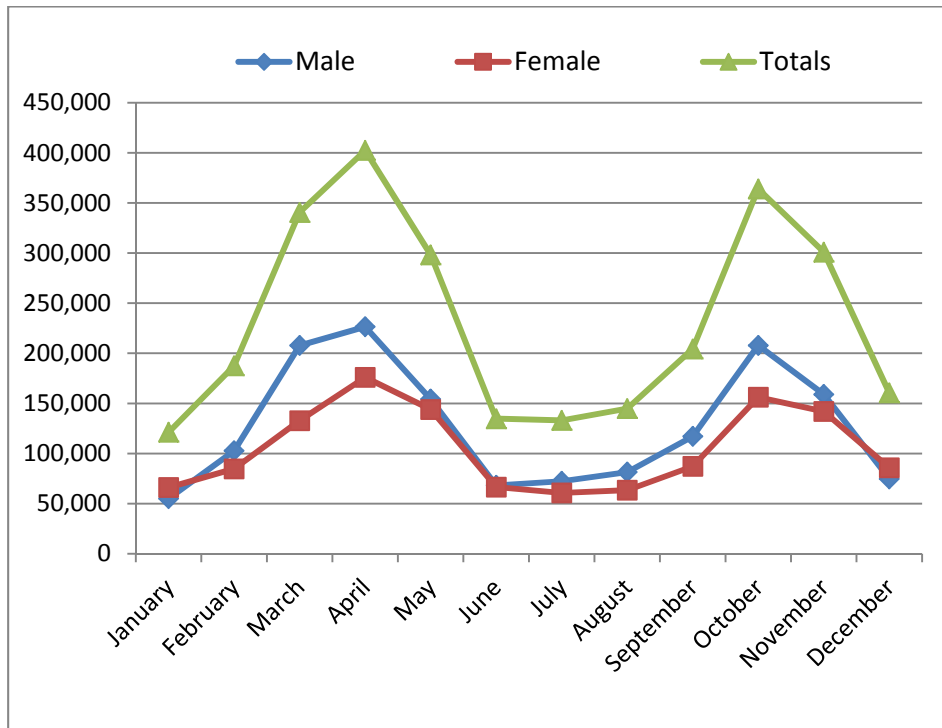
SECTION 3

All Cattle Movements by Month and by Type



Month	Mart	Farm To Farm	Total Moves
January	58,101	63,114	121,215
February	108,117	79,375	187,492
March	188,975	151,567	340,542
April	235,147	167,245	402,392
May	165,744	132,437	298,181
June	70,274	64,449	134,723
July	78,316	54,710	133,026
August	98,497	46,395	144,892
September	144,304	60,014	204,318
October	270,614	93,404	364,018
November	197,230	103,712	300,942
December	81,869	78,600	160,469
Total	1,697,188	1,095,022	2,792,210

All Cattle Movements by Month and by Gender



Month	Male	Female	Total
January	55,073	66,142	121,215
February	102,716	84,776	187,492
March	207,754	132,788	340,542
April	226,407	175,985	402,392
May	154,241	143,940	298,181
June	68,204	66,519	134,723
July	72,318	60,708	133,026
August	81,436	63,456	144,892
September	117,059	87,259	204,318
October	207,858	156,160	364,018
November	158,955	141,987	300,942
December	74,683	85,786	160,469
Total	1,526,704	1,265,506	2,792,210

SECTION 4

Cattle Imports by Country of Origin and Gender

	Male	Female	Total
UK *	963	9,971	10,934
Germany	0	3	3
France	21	84	105
Netherlands	6	30	36
Austria	5	77	82
Denmark	2	322	324
Belgium	5	1	6
Total	1,002	10,488	11,490

* Of the cattle imported from UK, 8,993 went for immediate slaughter

Age Profile of Cattle Imports from UK which went for Immediate Slaughter

0 - 24 Mts	24 - 48 Mts	48 - 72 Mts	72 - 96 Mts	96 - 120 Mts	120 Mts +
143	1,408	2,168	2,056	1,534	1,684

Cattle Imports for further breeding and production by Country of Origin and Age **

	0 - 12 Mts	12- 18 Mts	18 - 24 Mts	24 - 36 Mts	36 Mts +
UK	488	361	244	207	641
Germany	0	0	1	2	0
France	28	8	20	35	14
Netherlands	7	16	5	5	3
Austria	66	10	3	2	1
Belgium	1	2	2	1	0
Denmark	94	133	78	17	2
Total	684	530	353	269	661

** Figure excludes cattle imported from the UK which went for immediate slaughter

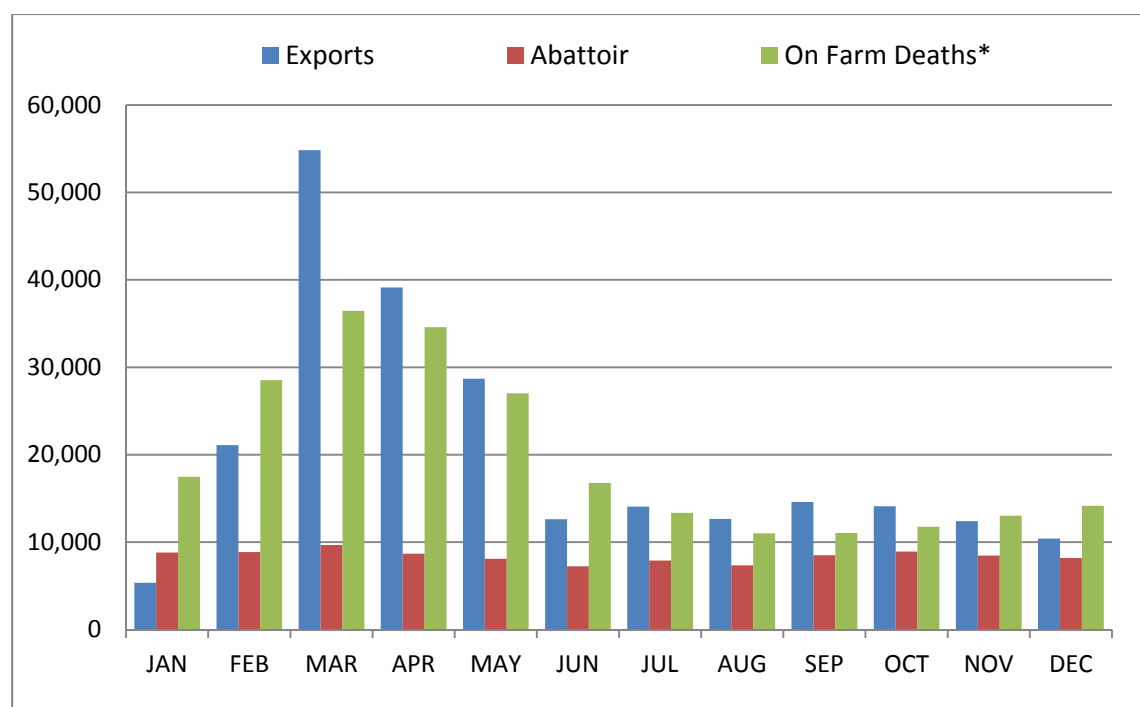
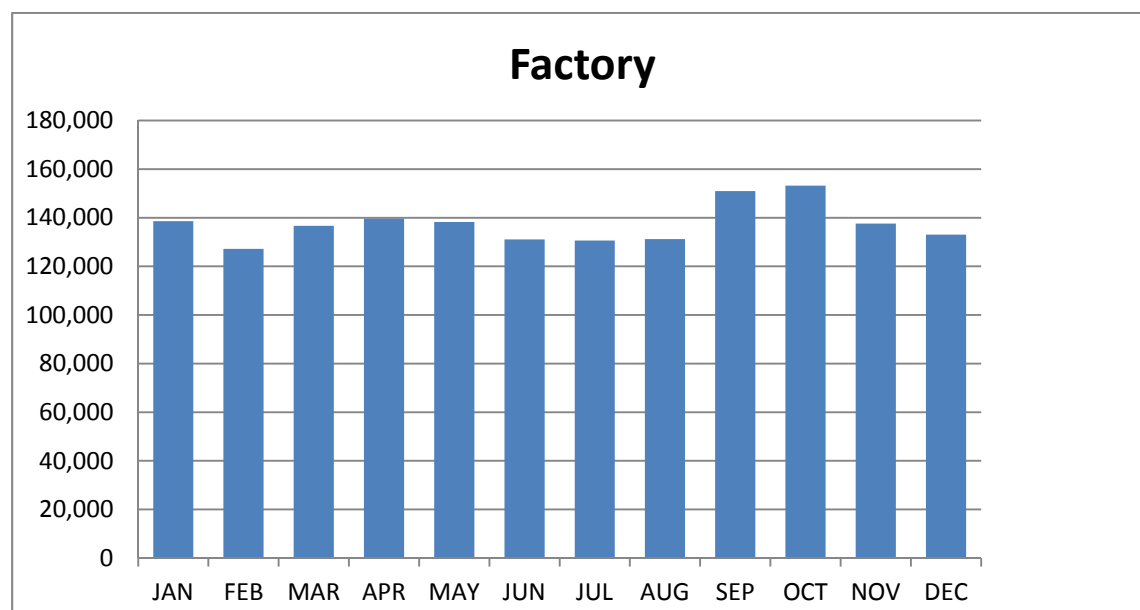
Chapter 3

Disposal of Cattle



SECTION 1

Overall Summary of Cattle Disposals and On Farm Deaths



* Including Stillborn Animals

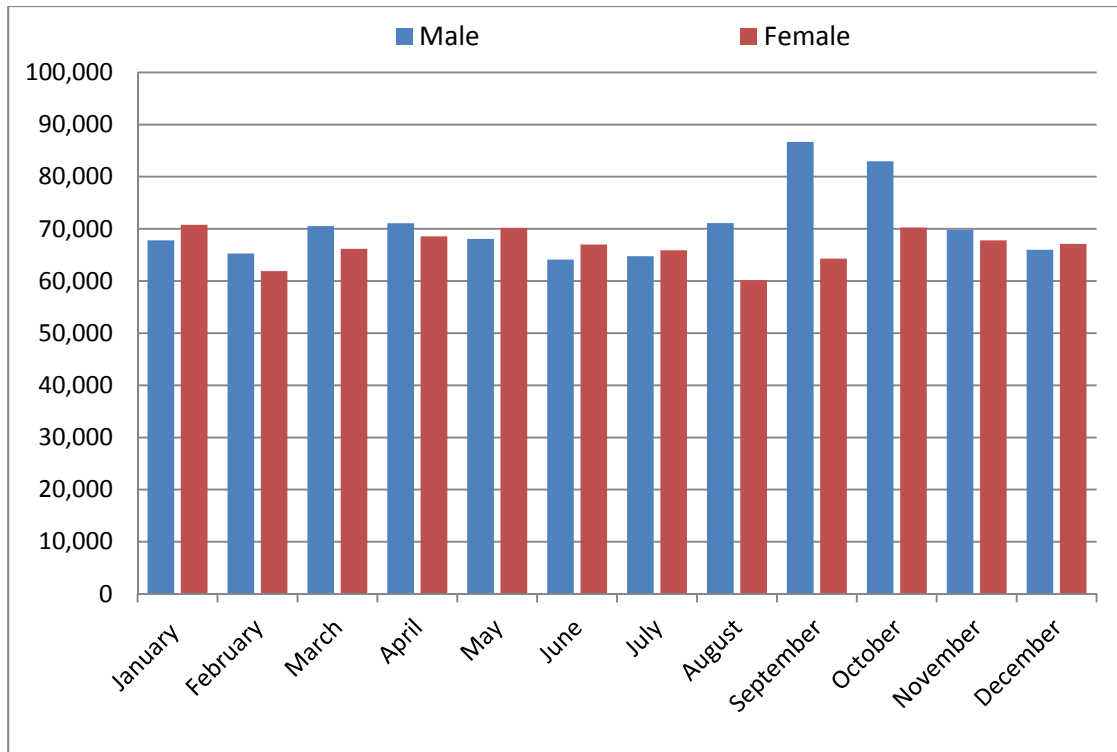
Overall Summary of Cattle Disposals and On Farm Deaths

Month	Factory	Exports	Abattoir	On Farm Deaths**	Stillborn	Total
January	138,563	5,357	8,821	13,365	4,111	170,217
February	127,200	21,099	8,864	19,320	9,207	185,690
March	136,713	54,831	9,668	28,626	7,827	237,665
April	139,661	39,125	8,679	29,947	4,651	222,063
May	138,268	28,690	8,094	24,801	2,235	202,088
June	131,111	12,622	7,235	15,880	905	167,753
July	130,639	14,076	7,903	12,824	540	165,982
August	131,242	12,664	7,360	10,398	609	162,273
September	150,977	14,603	8,510	10,181	875	185,146
October	153,200	14,108	8,918	10,615	1,140	187,981
November	137,606	12,401	8,472	11,856	1,162	171,497
December	133,078	10,417	8,201	12,853	1,300	165,849
Total	1,648,258	239,993	100,725	200,666	34,562	2,224,204

** Excluding Stillborn Animals

SECTION 2

Cattle Disposals in Department Approved Slaughter Plants by Month and by Gender



Month	Male		Female		Total
January	67,798		70,765		138,563
February	65,286		61,914		127,200
March	70,535		66,178		136,713
April	71,091		68,570		139,661
May	68,082		70,186		138,268
June	64,125		66,986		131,111
July	64,747		65,892		130,639
August	71,096		60,146		131,242
September	86,686		64,291		150,977
October	82,955		70,245		153,200
November	69,803		67,803		137,606
December	65,971		67,107		133,078
Total	848,175		800,083		1,648,258

Age Profile of Slaughtering in Department Approved Slaughter Plants for Beef Cattle by Month and by Gender

For the purposes of this table Beef Cattle are defined as the progeny of bulls of a beef breed

Month	0 - 12 Mts		12 - 18 Mts		18 - 24 Mts		24 - 30 Mts		30 - 48 Mts		48 Mts +		Total		Total
	M	F	M	F	M	F	M	F	M	F	M	F	M	F	
January	166	150	2,219	778	22,367	21,912	5,644	6,916	14,041	10,587	483	14,095	44,920	54,438	99,358
February	127	85	2,687	692	22,956	17,819	6,450	7,697	10,591	7,500	426	11,267	43,237	45,060	88,297
March	195	122	3,816	811	21,380	14,359	12,188	13,849	9,877	6,989	501	10,208	47,957	46,338	94,295
April	161	90	5,549	1,103	14,395	10,010	17,003	19,273	9,727	6,516	685	9,552	47,520	46,544	94,064
May	145	91	8,589	1,506	9,774	6,773	19,544	23,127	7,239	5,642	757	11,306	46,048	48,445	94,493
June	147	59	10,613	1,476	6,962	4,007	19,253	21,254	7,671	4,673	875	13,177	45,521	44,646	90,167
July	218	122	6,257	1,521	4,799	3,218	22,960	21,202	8,382	4,952	1,094	13,558	43,710	44,573	88,283
August	150	88	3,739	1,313	3,824	3,444	31,508	21,260	10,366	5,220	1,097	11,990	50,684	43,315	93,999
September	162	113	2,902	1,502	5,327	5,242	38,820	21,304	15,662	6,984	1,260	12,407	64,133	47,552	111,685
October	298	212	2,106	1,258	7,655	8,954	27,560	16,441	21,419	9,457	1,252	15,868	60,290	52,190	112,480
November	268	206	1,683	1,098	11,208	13,269	15,097	10,141	20,630	10,170	1,109	15,948	49,995	50,832	100,827
December	269	176	2,283	901	16,862	18,399	8,419	7,775	17,020	9,993	915	13,913	45,768	51,157	96,925
Total	2,306	1,514	52,443	13,959	147,509	127,406	224,446	190,239	152,625	88,683	10,454	153,289	589,783	575,090	1,164,873

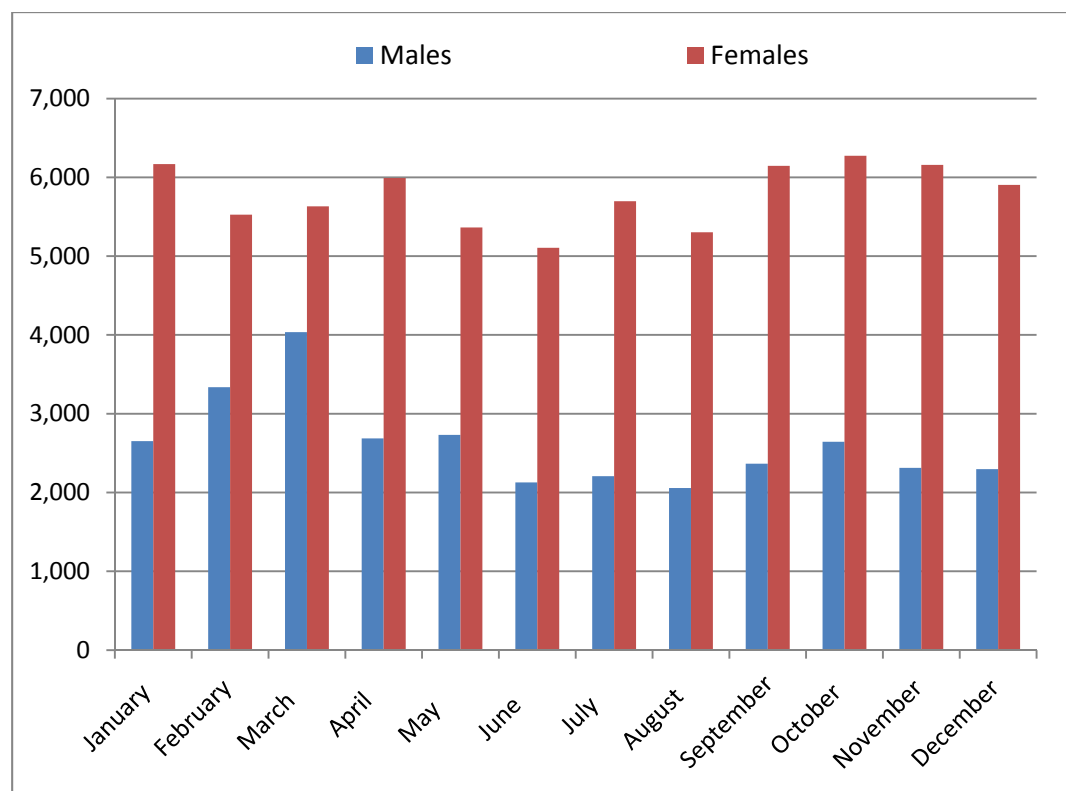
Age Profile of Slaughterings in Department Approved Plants for Dairy Cattle by Month and by Gender

For the purposes of this table Dairy Cattle are defined as the progeny of bulls of a dairy breed

Month	0 - 12 Mts		12 - 18 Mts		18 - 24 Mts		24 - 30 Mts		30 - 48 Mts		48 Mts +		Total		Total
	M	F	M	F	M	F	M	F	M	F	M	F	M	F	
January	127	13	213	12	14,855	924	2,930	319	4,704	3,363	49	11,696	22,878	16,327	39,205
February	194	14	318	45	11,629	545	6,697	760	3,139	2,747	72	12,743	22,049	16,854	38,903
March	501	14	378	61	6,299	340	12,145	1,303	3,160	2,796	95	15,326	22,578	19,840	42,418
April	200	1	777	32	3,245	222	16,156	1,922	3,070	2,952	123	16,897	23,571	22,026	45,597
May	41	5	2,708	81	2,407	119	14,321	1,789	2,418	2,918	139	16,829	22,034	21,741	43,775
June	29	1	2,606	59	1,855	79	11,571	1,717	2,427	2,700	116	17,784	18,604	22,340	40,944
July	42	19	2,645	105	1,486	66	13,589	1,723	3,140	2,849	135	16,557	21,037	21,319	42,356
August	52	10	831	51	2,216	114	11,041	1,096	6,139	2,914	133	12,646	20,412	16,831	37,243
September	70	6	406	47	3,709	194	6,968	688	11,233	3,465	167	12,339	22,553	16,739	39,292
October	74	105	173	31	4,434	385	3,698	416	14,157	3,911	129	13,207	22,665	18,055	40,720
November	146	20	154	12	6,148	503	2,095	287	11,157	3,523	108	12,626	19,808	16,971	36,779
December	116	67	268	29	9,742	683	1,740	241	8,245	3,121	92	11,809	20,203	15,950	36,153
Total	1,592	275	11,477	565	68,025	4,174	102,951	12,261	72,989	37,259	1,358	170,459	258,392	224,993	483,385

SECTION 3

Cattle Disposals in Local Authority Approved Slaughter Plants by Month and by Gender



Month	Males	Females	Total
January	2,653	6,168	8,821
February	3,337	5,527	8,864
March	4,035	5,633	9,668
April	2,687	5,992	8,679
May	2,731	5,363	8,094
June	2,129	5,106	7,235
July	2,207	5,696	7,903
August	2,057	5,303	7,360
September	2,365	6,145	8,510
October	2,645	6,273	8,918
November	2,314	6,158	8,472
December	2,297	5,904	8,201
Total	31,457	69,268	100,725

Age Profile of Slaughterings in Local Authority Approved Slaughter Plants for Beef Cattle by Month and by Gender

For the purposes of this table Beef Cattle are defined as the progeny of bulls of a beef breed

Month	0 - 12 Mts		12 - 18 Mts		18 - 24 Mts		24 - 30 Mts		30 - 48 Mts		48 Mts +		Total
	M	F	M	F	M	F	M	F	M	F	M	F	
January	67	142	116	349	888	3,306	201	575	662	1,121	12	318	7,757
February	62	128	127	336	761	2,660	221	772	492	888	9	310	6,766
March	73	139	122	402	831	2,245	317	1,409	447	781	17	271	7,054
April	87	138	220	713	493	1,620	445	2,110	545	759	10	267	7,407
May	58	111	321	832	386	937	579	2,162	400	653	36	315	6,790
June	46	121	319	844	244	654	517	2,279	401	591	30	345	6,391
July	87	131	274	1,067	183	698	681	2,559	449	557	32	385	7,103
August	42	117	191	993	134	790	832	2,152	438	577	30	404	6,700
September	29	133	158	966	204	1,431	890	2,158	604	887	37	319	7,816
October	54	217	117	694	275	2,060	802	1,511	894	1,110	36	391	8,161
November	55	183	81	504	352	2,609	493	1,062	814	1,146	31	371	7,701
December	28	106	86	352	520	2,910	366	726	710	1,129	33	396	7,362
Total	688	1,666	2,132	8,052	5,271	21,920	6,344	19,475	6,856	10,199	313	4,092	87,008

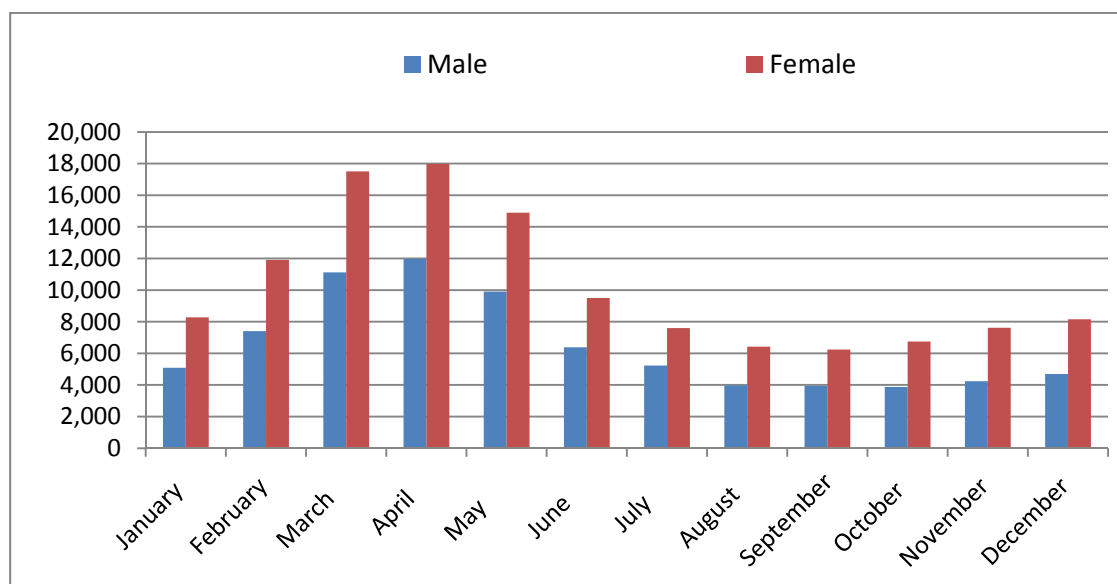
Age Profile of Slaughterings in Local Authority Approved Slaughter Plants for Dairy Cattle by Month and by Gender

For the purposes of this table Dairy Cattle are defined as the progeny of bulls of a dairy breed

Month	0 - 12 Mts		12 - 18 Mts		18 - 24 Mts		24 - 30 Mts		30 - 48 Mts		48 Mts +		Total
	M	F	M	F	M	F	M	F	M	F	M	F	
January	22	10	32	1	456	109	89	27	107	95	1	115	1,064
February	1,206	33	17	7	226	72	145	57	69	100	2	164	2,098
March	1,688	42	68	8	120	28	278	99	67	79	7	130	2,614
April	381	17	74	15	85	25	266	139	77	77	4	112	1,272
May	219	39	132	13	110	21	381	119	95	73	14	88	1,304
June	46	9	164	16	51	6	202	106	107	46	2	89	844
July	6	2	134	15	19	5	248	102	91	66	3	109	800
August	2	2	52	12	39	13	184	62	111	63	2	118	660
September	8	1	14	14	110	37	126	40	184	81	1	78	694
October	10	3	15	8	148	52	57	33	236	83	1	111	757
November	6	1	9	9	213	70	52	23	207	92	1	88	771
December	9	4	7	3	275	89	37	8	224	81	2	100	839
Total	3,603	163	718	121	1,852	527	2,065	815	1,575	936	40	1,302	13,717

SECTION 4

On Farm Deaths by Month and by Gender*



* Excludes stillborn animals

Month	Male	Female	Total
January	5,087	8,278	13,365
February	7,409	11,911	19,320
March	11,120	17,506	28,626
April	11,969	17,978	29,947
May	9,909	14,892	24,801
June	6,381	9,499	15,880
July	5,229	7,595	12,824
August	3,976	6,422	10,398
September	3,939	6,242	10,181
October	3,871	6,744	10,615
November	4,238	7,618	11,856
December	4,696	8,157	12,853
Total	77,824	122,842	200,666

Age Profile of On Farm Deaths for Male Beef Cattle by Month

For the purposes of this table Beef Cattle are defined as the progeny of bulls of a beef breed

Month	0 - 6 wks	6 wks - 6 Mts	6 - 12 Mts	12 - 18 Mts	18 - 24 Mts	24 - 30 Mts	30 - 48 Mts	48 Mts +	Total
January	591	433	873	173	358	89	159	67	2,743
February	1,305	364	718	191	322	98	140	69	3,207
March	2,939	596	592	310	281	141	171	85	5,115
April	3,759	1,115	477	446	229	185	158	82	6,451
May	2,654	2,022	316	516	193	221	125	94	6,141
June	1,042	1,982	200	386	107	159	91	77	4,044
July	600	1,841	185	352	90	166	104	81	3,419
August	360	1,228	226	310	100	176	102	63	2,565
September	338	1,001	407	292	145	138	133	64	2,518
October	347	667	622	246	227	99	142	52	2,402
November	421	558	859	191	287	82	150	49	2,597
December	432	606	1,054	173	299	77	165	79	2,885
Total	14,788	12,413	6,529	3,586	2,638	1,631	1,640	862	44,087

Age Profile of On Farm Deaths for Female Beef Cattle by Month

For the purposes of this table Beef Cattle are defined as the progeny of bulls of a beef breed

Month	0 - 6 wks	6 wks - 6 Mts	6 - 12 Mts	12 - 18 Mts	18 - 24 Mts	24 - 30 Mts	30 - 48 Mts	48 Mts +	Total
January	453	348	562	103	298	88	374	1,483	3,709
February	998	352	542	120	250	89	368	1,817	4,536
March	2,164	479	401	224	236	157	571	2,819	7,051
April	2,917	943	345	315	224	253	562	3,191	8,750
May	2,002	1,664	212	362	181	310	461	2,680	7,872
June	873	1,643	126	338	104	251	283	1,654	5,272
July	407	1,641	137	325	99	211	246	1,268	4,334
August	258	1,039	181	232	104	198	282	1,170	3,464
September	235	763	341	238	114	159	293	1,293	3,436
October	234	590	483	177	207	148	346	1,623	3,808
November	278	465	624	120	278	114	432	2,076	4,387
December	307	427	668	114	299	76	383	1,800	4,074
Total	11,126	10,354	4,622	2,668	2,394	2,054	4,601	22,874	60,693

Age Profile of On Farm Deaths for Male Dairy Cattle by Month

For the purposes of this table Dairy Cattle are defined as the progeny of bulls of a dairy breed

Month	0 - 6 wks	6 wks - 6 Mts	6 - 12 Mts	12 - 18 Mts	18 - 24 Mts	24 - 30 Mts	30 - 48 Mts	48 Mts +	Total
January	728	351	664	113	284	105	94	5	2,344
February	2,770	341	380	268	194	151	92	6	4,202
March	3,841	877	300	464	142	266	101	14	6,005
April	2,497	1,805	206	502	94	289	109	16	5,518
May	1,037	1,879	120	360	72	207	85	8	3,768
June	387	1,416	105	229	40	103	50	7	2,337
July	164	1,096	141	183	54	107	59	6	1,810
August	97	651	304	108	99	56	87	9	1,411
September	144	402	477	71	168	41	111	7	1,421
October	261	269	549	61	165	26	128	10	1,469
November	324	296	576	81	215	38	100	11	1,641
December	393	353	631	70	226	31	98	9	1,811
Total	12,643	9,736	4,453	2,510	1,753	1,420	1,114	108	33,737

Age Profile of On Farm Deaths for Female Dairy Cattle by Month

For the purposes of this table Dairy Cattle are defined as the progeny of bulls of a dairy breed

Month	0 - 6 wks	6 wks - 6 Mts	6 - 12 Mts	12 - 18 Mts	18 - 24 Mts	24 - 30 Mts	30 - 48 Mts	48 Mts +	Total
January	554	244	404	74	259	111	839	2,084	4,569
February	1,809	172	282	153	308	370	979	3,302	7,375
March	2,525	666	210	264	265	690	1,192	4,643	10,455
April	1,610	1,140	136	265	140	646	959	4,332	9,228
May	810	1,428	83	256	68	471	683	3,221	7,020
June	230	1,199	85	196	37	271	382	1,827	4,227
July	111	1,072	87	120	32	219	306	1,314	3,261
August	87	723	283	97	72	132	370	1,194	2,958
September	107	387	410	54	118	74	430	1,226	2,806
October	178	264	452	42	141	67	514	1,278	2,936
November	221	187	476	53	202	63	598	1,431	3,231
December	278	212	584	50	262	75	809	1,813	4,083
Total	8,520	7,694	3,492	1,624	1,904	3,189	8,061	27,665	62,149

SECTION 5

Stillborn Calves by Month and by Gender

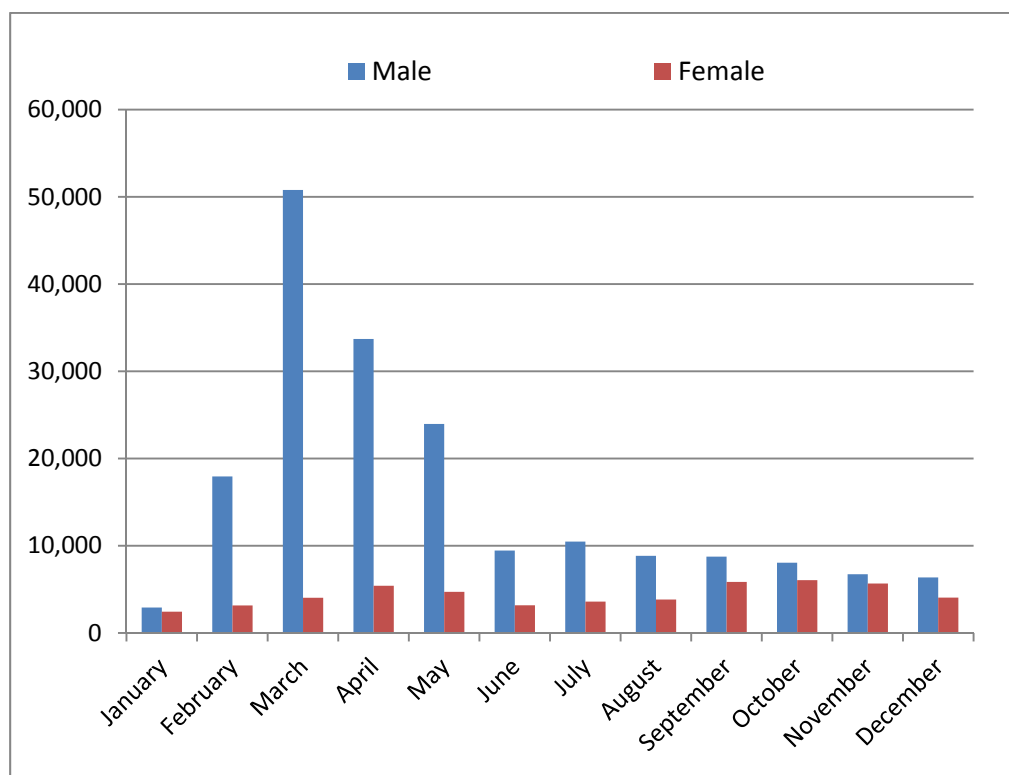
Month	Male	Female	Total
January	2,255	1,856	4,111
February	5,089	4,118	9,207
March	4,622	3,205	7,827
April	2,774	1,877	4,651
May	1,366	869	2,235
June	556	349	905
July	322	218	540
August	360	249	609
September	472	403	875
October	665	475	1,140
November	689	473	1,162
December	721	579	1,300
Total	19,891	14,671	34,562

Stillborn Calves by Month, Gender and Sire

Month	Calves Born to Beef Bull			Calves Born to a Dairy Bull			Total
	Male	Female	Total	Male	Female	Total	
January	711	503	1,214	1,544	1,353	2,897	4,111
February	1795	1373	3,168	3,294	2,745	6,039	9,207
March	2623	1815	4,438	1,999	1,390	3,389	7,827
April	2043	1338	3,381	731	539	1,270	4,651
May	1068	676	1,744	298	193	491	2,235
June	458	290	748	98	59	157	905
July	277	175	452	45	43	88	540
August	273	161	434	87	88	175	609
September	268	228	496	204	175	379	875
October	336	212	548	329	263	592	1,140
November	373	229	602	316	244	560	1,162
December	396	270	666	325	309	634	1,300
Total	10,621	7,270	17,891	9,270	7,401	16,671	34,562

SECTION 6

Live Exports by Month and by Gender



Month	Male	Female	Total
January	2,913	2,444	5,357
February	17,952	3,147	21,099
March	50,792	4,039	54,831
April	33,707	5,418	39,125
May	23,972	4,718	28,690
June	9,455	3,167	12,622
July	10,483	3,593	14,076
August	8,837	3,827	12,664
September	8,752	5,851	14,603
October	8,058	6,050	14,108
November	6,730	5,671	12,401
December	6,362	4,055	10,417
Total	188,013	51,980	239,993

Age Profile of Live Exports for Beef Cattle by Month and by Gender

For the purposes of this table Beef Cattle are defined as the progeny of bulls of a beef breed

Month	0 - 6 weeks		6 wks - 6 Mts		6 - 12 Mts		12 - 18 Mts		18 - 24 Mts		24 - 30 Mts		30 Mts +		Total
	M	F	M	F	M	F	M	F	M	F	M	F	M	F	
January	5	7	11	11	571	304	229	169	256	274	31	32	24	187	2,111
February	48	3	31	7	2,226	464	1,046	288	758	514	93	96	54	256	5,884
March	655	174	71	11	2,606	438	2,268	370	1,077	366	202	177	79	232	8,726
April	1,465	340	134	33	1,824	324	3,301	687	832	429	153	394	45	180	10,141
May	2,247	365	305	79	1,735	277	3,978	551	527	202	156	264	25	119	10,830
June	956	256	223	54	999	263	1,024	390	125	78	189	154	97	122	4,930
July	215	88	150	32	1,481	410	2,279	454	279	190	349	534	267	343	7,071
August	7	2	82	31	2,071	387	2,012	494	504	328	803	724	276	392	8,113
September	4	1	94	29	2,254	538	1,336	998	742	939	1,205	724	720	532	10,116
October	4	3	135	37	2,605	550	738	673	901	1,302	825	622	923	642	9,960
November	2	4	82	22	2,192	569	310	422	607	1,313	403	424	714	626	7,690
December	1	0	55	6	2,720	268	561	250	654	1,080	195	290	622	711	7,413
Total	5,609	1,243	1,373	352	23,284	4,792	19,082	5,746	7,262	7,015	4,604	4,435	3,846	4,342	92,985

Age Profile of Live Exports for Dairy Cattle by Month and by Gender

For the purposes of this table Dairy Cattle are defined as the progeny of bulls of a dairy breed

Month	0 - 6 weeks		6 wks - 6 Mts		6 - 12 Mts		12 - 18 Mts		18 - 24 Mts		24 - 30 Mts		30 Mts +		Total
	M	F	M	F	M	F	M	F	M	F	M	F	M	F	
January	58	1	27	0	115	128	102	9	802	561	146	136	304	615	3,004
February	331	1	153	2	5	1	2	1	887	590	384	213	24	652	3,246
March	11,225	22	323	27	108	16	358	48	1,020	187	631	458	31	761	15,215
April	40,690	186	1,610	51	13	24	148	149	339	146	944	862	90	853	46,105
May	22,107	272	2,457	66	26	18	471	520	163	92	636	881	93	1,182	28,984
June	10,623	165	2,621	127	25	39	840	454	304	115	515	887	71	1,074	17,860
July	3,337	113	1,366	121	42	37	188	554	207	34	625	354	77	637	7,692
August	1,274	46	1,056	67	81	20	1,549	291	360	113	849	375	294	630	7,005
September	189	3	270	12	88	12	319	220	587	150	874	273	755	799	4,551
October	228	1	48	9	189	5	48	146	519	653	461	220	904	1,056	4,487
November	90	0	18	1	26	0	55	58	640	760	267	174	831	1,228	4,148
December	86	10	23	14	192	96	128	27	1,297	1,045	147	172	547	927	4,711
Total	90,238	820	9,972	497	910	396	4,208	2,477	7,125	4,446	6,479	5,005	4,021	10,414	147,008

Destination of Live Exports

Country	Male	Female	Total
NORTHERN IRELAND	29,632	24,368	54,000
SPAIN	43,815	1,142	44,957
NETHERLANDS	38,923	315	39,238
ITALY	23,517	6,820	30,337
BELGIUM	20,562	1,194	21,756
UNITED KINGDOM	884	17,438	18,322
FRANCE	5,235	106	5,341
GREECE	1,433	0	1,433
GERMANY	646	52	698
ROMANIA	0	193	193
PORTUGAL	3	147	150
HUNGARY	105	0	105
CZECH REPUBLIC	7	3	10
Total EU	164,762	51,778	216,540

Country	Male	Female	Total
LIBYA	20,081	15	20,096
TUNISIA	2,417	0	2,417
MOROCCO	753	0	753
LEBANON	0	68	68
ALBANIA	0	46	46
KOSOVO (SERBIA)	0	45	45
RWANDA	0	28	28
Total Non-EU	23,251	202	23,453

Total	188,013	51,980	239,993
-------	---------	--------	---------

Age Profile of Live Exports by Breed

Breed	0 - 6 weeks	6 wks - 6 Mts	6 - 12 Mts	12 - 18 Mts	18 - 24 Mts	24 - 30 Mts	30 Mts +	Total
FR	89,437	10,042	1,231	5,870	10,169	10,909	13,625	141,283
CH	42	284	6,060	6,099	4,907	2,873	2,076	22,341
LM	382	333	9,827	8,169	4,294	2,832	2,213	28,050
BB	1,337	342	8,481	5,237	1,688	910	1,161	19,156
AA	3,438	511	934	2,019	1,319	928	786	9,935
HE	1,132	110	288	564	526	480	577	3,677
SI	81	34	763	1,025	660	504	571	3,638
Other	2,061	538	1,798	2,530	2,285	1,087	1,614	11,913
Total	97,910	12,194	29,382	31,513	25,848	20,523	22,623	239,993

FR: Friesian

HE: Hereford

CH: Charolais

LM: Limousin

SI: Simmental

AA: Aberdeen Angus

BB: Belgian Blue

* For full list of breed codes see Appendix

Destination of Live Exports by Age

Country	0 - 6 weeks	6 wks - 6 Mts	6 - 12 Mts	12 - 18 Mts	18 - 24 Mts	24 - 30 Mts	30 Mts +	Total
NORTHERN IRELAND	1,705	734	2,030	4,220	13,000	16,115	16,196	54,000
SPAIN	30,981	9,950	2,444	1,431	103	37	11	44,957
NETHERLANDS	38,742	134	49	60	59	35	159	39,238
ITALY	1,799	491	14,339	11,600	1,791	273	44	30,337
BELGIUM	19,832	245	262	216	262	258	681	21,756
UNITED KINGDOM	14	92	516	3,092	5,536	3,632	5,440	18,322
FRANCE	4,837	276	46	55	19	47	61	5,341
GREECE	0	26	978	382	42	5	0	1,433
GERMANY	0	19	555	121	3	0	0	698
ROMANIA	0	0	0	44	117	28	4	193
PORTUGAL	0	0	45	38	47	14	6	150
HUNGARY	0	1	64	40	0	0	0	105
CZECH REPUBLIC	0	0	2	7	1	0	0	10
Total EU	97,910	11,968	21,330	21,306	20,980	20,444	22,602	216,540
LIBYA	0	86	5,235	9,991	4,772	12	0	20,096
TUNISIA	0	128	2,169	119	1	0	0	2,417
MOROCCO	0	12	648	93	0	0	0	753
RWANDA	0	0	0	0	23	4	1	28
ALBANIA	0	0	0	0	35	2	9	46
KOSOVO (SERBIA)	0	0	0	4	29	2	10	45
LEBANON	0	0	0	0	8	59	1	68
Total Non-EU	0	226	8,052	10,207	4,868	79	21	23,453
Total	97,910	12,194	29,382	31,513	25,848	20,523	22,623	239,993

Chapter 4

National Herd Data

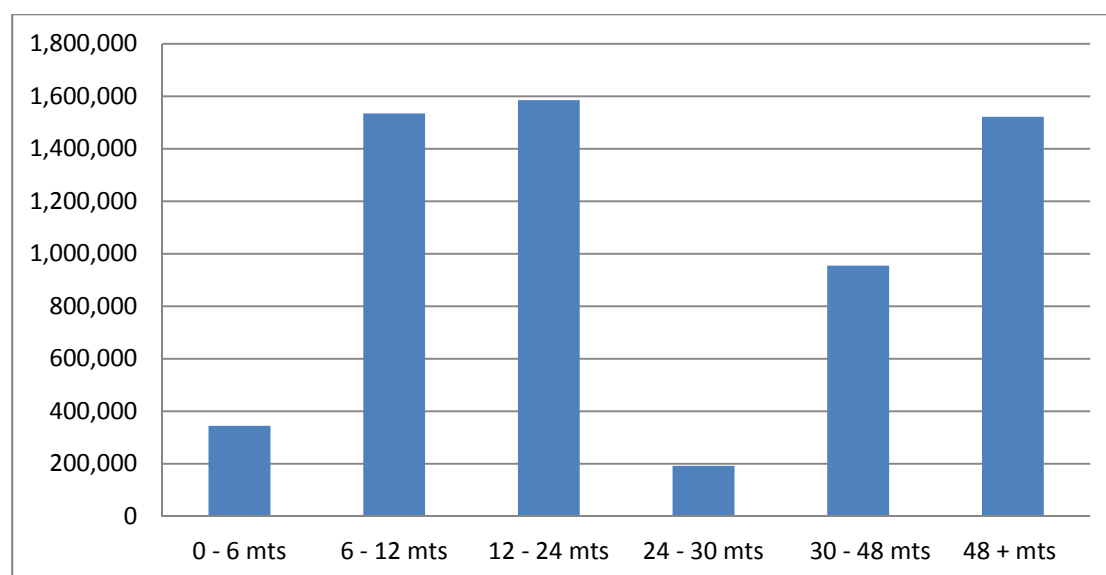


SECTION 1

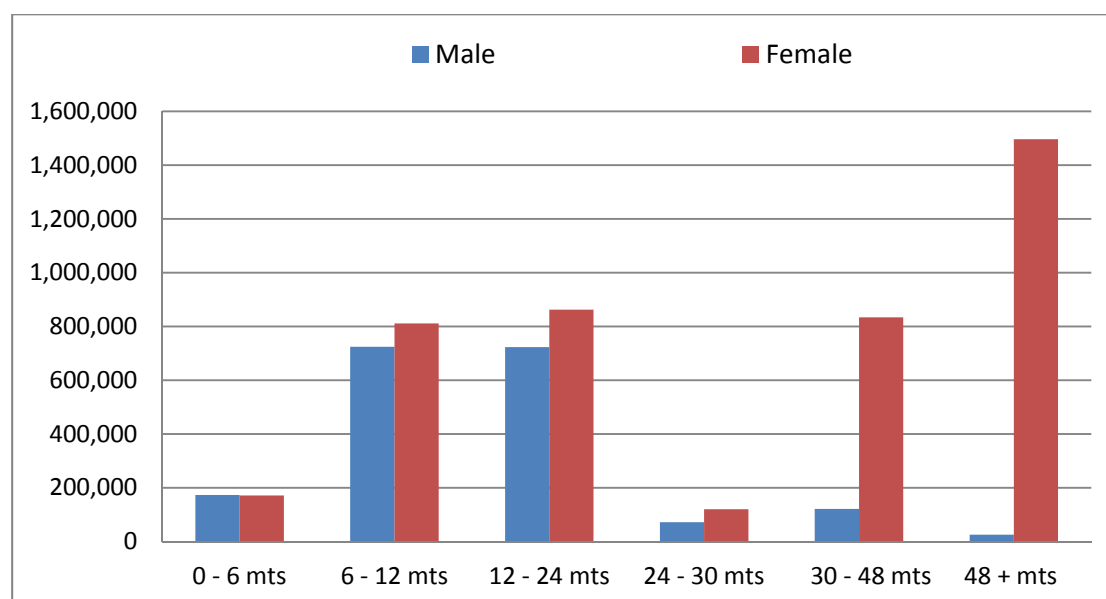
Age Profile of Live Herd at 31/12/2014 by Gender

	0 - 6 mts	6 - 12 mts	12 - 24 mts	24 - 30 mts	30 - 48 mts	48 + mts	Total
Male	173,072	724,018	723,133	72,242	121,676	25,776	1,839,917
Female	171,687	811,100	862,367	120,252	833,596	1,496,253	4,295,255
Total	344,759	1,535,118	1,585,500	192,494	955,272	1,522,029	6,135,172

Cattle Population by Age



Cattle Population by Age and Gender



SECTION 2

Age Profile of Live Herd at 31/12/2014 by County

	0 - 6 mts	6 - 12 mts	12 - 24 mts	24 - 30 mts	30 - 48 mts	48 + mts	Total	% of Total
Carlow	6,447	21,956	28,076	4,358	12,695	20,884	94,416	1.54%
Cavan	14,413	50,179	49,467	7,128	32,641	58,790	212,618	3.47%
Clare	14,677	63,026	51,729	6,441	36,360	76,539	248,772	4.05%
Cork	37,677	232,923	226,825	21,455	167,123	239,698	925,701	15.09%
Donegal	12,297	43,378	45,533	5,445	21,705	43,734	172,092	2.81%
Dublin	1,748	4,566	5,980	1,202	2,938	4,541	20,975	0.34%
Galway	24,875	99,494	95,658	11,927	53,644	99,728	385,326	6.28%
Kerry	16,053	68,645	60,935	6,318	57,267	89,174	298,392	4.86%
Kildare	7,043	25,597	38,342	6,812	16,992	21,866	116,652	1.90%
Kilkenny	13,403	86,831	90,788	8,230	46,151	66,290	311,693	5.08%
Laois	14,030	56,466	67,746	8,971	31,029	45,947	224,189	3.65%
Leitrim	6,276	14,534	10,750	2,118	8,890	24,884	67,452	1.10%
Limerick	13,577	88,745	83,496	6,878	63,523	87,370	343,589	5.60%
Longford	7,245	25,708	26,204	3,783	14,197	27,294	104,431	1.70%
Louth	6,102	16,204	24,950	4,717	12,369	17,590	81,932	1.34%
Mayo	15,080	60,267	54,544	6,869	34,216	71,303	242,279	3.95%
Meath	19,047	56,018	73,582	14,353	41,092	55,655	259,747	4.23%
Monaghan	12,925	45,219	51,478	7,867	29,097	45,946	192,532	3.14%
Offaly	12,948	57,673	66,504	7,361	27,111	38,552	210,149	3.43%
Roscommon	11,855	44,476	45,747	6,165	22,842	47,251	178,336	2.91%
Sligo	7,063	24,589	20,774	3,121	14,093	30,408	100,048	1.63%
Tipperary	22,150	157,955	160,526	12,446	88,400	122,067	563,544	9.19%
Waterford	9,432	59,853	56,170	4,754	38,431	54,825	223,465	3.64%
Westmeath	12,205	43,298	52,713	7,873	27,511	40,994	184,594	3.01%
Wexford	15,849	64,217	70,346	10,148	38,515	61,070	260,145	4.24%
Wicklow	10,342	23,301	26,637	5,754	16,440	29,629	112,103	1.83%
Total	344,759	1,535,118	1,585,500	192,494	955,272	1,522,029	6,135,172	100%

SECTION 3

Age Profile of Live Herd at 31/12/2014 by Breed

	0 - 6 mts	6 - 12 mts	12 - 24 mts	24 - 30 mts	30 mts +	48 mts +	Total	% of Total
FR	73,947	482,190	527,668	53,633	513,382	669,713	2,320,533	37.8%
LM	92,855	281,002	309,617	51,202	128,987	268,061	1,131,724	18.4%
CH	76,419	264,216	280,121	37,971	96,492	185,951	941,170	15.3%
AA	34,845	212,216	177,305	15,020	53,370	94,206	586,962	9.6%
HE	19,362	127,950	105,516	8,569	37,236	69,058	367,691	6.0%
SI	14,327	46,496	50,174	8,321	32,760	85,666	237,744	3.9%
BB	15,186	46,262	49,303	7,206	25,240	39,850	183,047	3.0%
Other *	17,818	74,786	85,796	10,572	67,805	109,524	366,301	6.0%
Total	344,759	1,535,118	1,585,500	192,494	955,272	1,522,029	6,135,172	100%

FR: Friesian

LM: Limousin

CH: Charolais

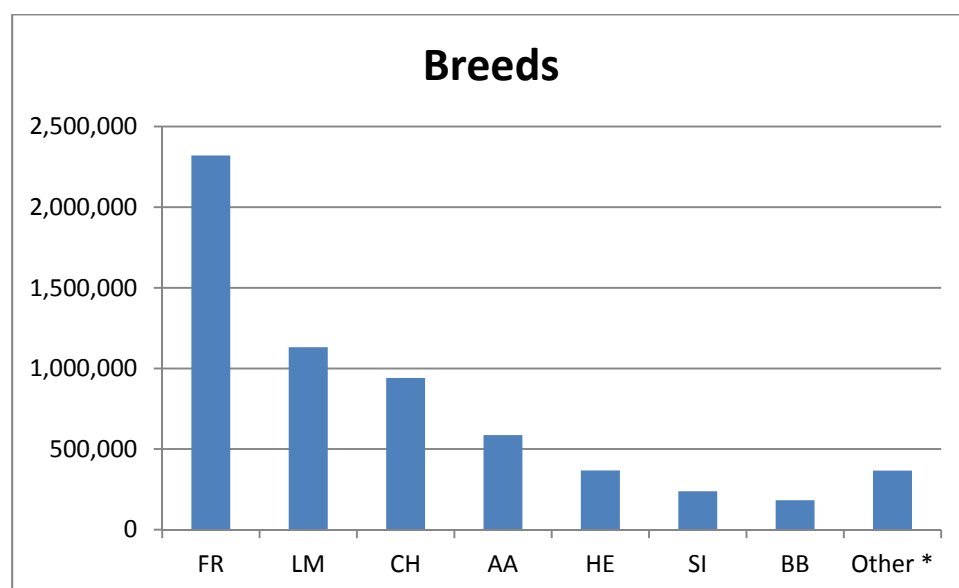
AA: Aberdeen Angus

HE: Hereford

SI: Simmental

BB: Belgian Blue

* For full list of breed codes see Appendix



SECTION 4

Profile of Live Herd at 31/12/2014 by County and by Breed

	FR	HE	CH	LM	SI	AA	BB	Other	Total
Carlow	27,940	4,398	14,465	27,544	3,608	7,808	4,483	4,170	94,416
Cavan	63,111	13,730	50,189	44,242	7,774	13,456	7,516	12,600	212,618
Clare	51,478	18,395	52,658	83,101	7,974	12,126	9,066	13,974	248,772
Cork	562,875	58,951	43,649	64,414	23,215	103,149	11,391	58,057	925,701
Donegal	39,967	5,414	48,994	33,385	14,564	10,176	8,186	11,406	172,092
Dublin	5,326	1,539	4,245	4,084	1,427	1,984	948	1,422	20,975
Galway	56,581	22,861	91,246	125,641	17,963	33,953	17,248	19,833	385,326
Kerry	157,652	20,367	26,241	38,736	6,556	23,228	6,899	18,713	298,392
Kildare	29,601	6,204	23,149	29,106	6,444	9,565	4,337	8,246	116,652
Kilkenny	148,635	16,715	33,659	49,795	11,503	31,836	6,124	13,426	311,693
Laois	76,776	11,592	32,449	51,775	9,624	19,375	8,078	14,520	224,189
Leitrim	4,495	2,300	24,339	18,504	4,244	5,754	3,337	4,479	67,452
Limerick	186,536	31,331	18,495	36,842	5,540	39,202	5,847	19,796	343,589
Longford	15,775	4,836	37,151	25,042	3,838	9,404	3,699	4,686	104,431
Louth	27,268	4,187	14,229	14,072	5,816	6,446	2,717	7,197	81,932
Mayo	30,191	7,763	65,369	62,818	15,768	34,582	11,174	14,614	242,279
Meath	98,091	14,294	46,475	44,422	10,075	22,785	7,861	15,744	259,747
Monaghan	65,397	11,700	39,618	34,920	13,253	10,812	6,857	9,975	192,532
Offaly	57,483	17,848	36,985	46,724	9,822	22,024	7,091	12,172	210,149
Roscommon	11,339	6,043	58,895	51,392	10,414	22,398	9,397	8,458	178,336
Sligo	13,570	3,125	26,126	23,643	6,757	14,178	5,100	7,549	100,048
Tipperary	276,601	44,310	49,815	75,822	15,022	54,840	10,818	36,316	563,544
Waterford	120,919	13,002	15,718	22,585	7,010	27,540	2,548	14,143	223,465
Westmeath	40,396	11,346	44,727	41,419	6,852	20,816	6,460	12,578	184,594
Wexford	116,361	9,815	23,663	54,364	8,093	21,812	11,406	14,631	260,145
Wicklow	36,169	5,625	18,621	27,332	4,588	7,713	4,459	7,596	112,103
Totals	2,320,533	367,691	941,170	1,131,724	237,744	586,962	183,047	366,301	6,135,172

SECTION 5

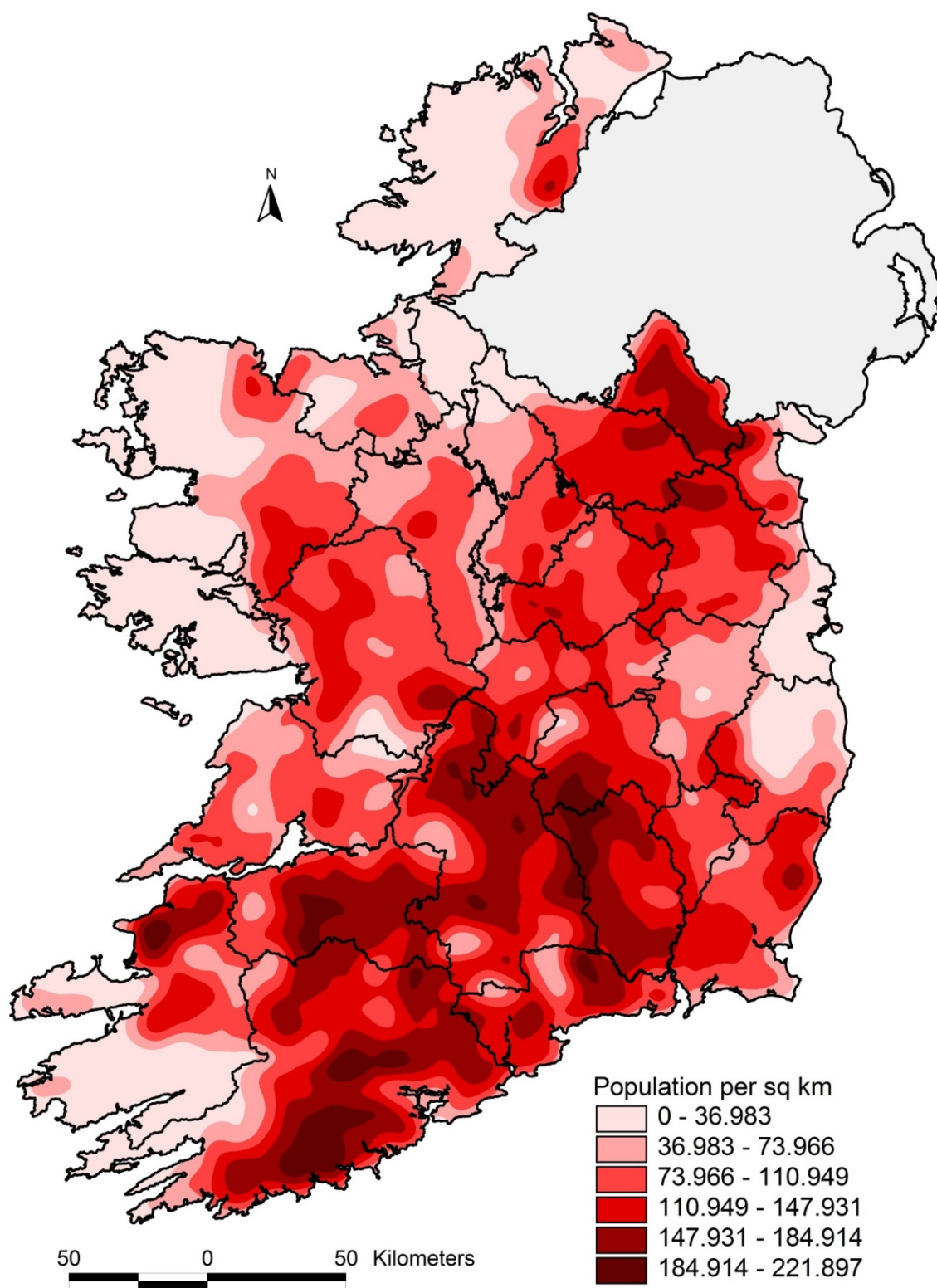
Profile of Herd Size at 31/12/2014

	Cattle	Herds	Av. Herd Size	Distribution of Herd Size				
				< 25	25 - 49	50 - 74	75 - 99	100+
Carlow	94,416	1,240	76.1	364	233	195	138	310
Cavan	212,618	4,532	46.9	1,924	1,185	560	338	525
Clare	248,772	5,747	43.3	2,460	1,590	751	396	550
Cork	925,701	10,971	84.4	2,964	2,044	1,427	1,113	3,423
Donegal	172,092	5,089	33.8	3,223	962	394	178	332
Dublin	20,975	335	62.6	155	67	27	21	65
Galway	385,326	10,650	36.2	5,456	2,713	1,241	544	696
Kerry	298,392	6,104	48.9	2,798	1,361	681	456	808
Kildare	116,652	1,692	68.9	620	345	214	136	377
Kilkenny	311,693	2,949	105.7	548	478	384	320	1,219
Laois	224,189	2,662	84.2	699	549	367	254	793
Leitrim	67,452	2,816	24.0	1,910	614	175	56	61
Limerick	343,589	4,943	69.5	1,656	1,039	619	448	1,181
Longford	104,431	2,237	46.7	926	620	304	149	238
Louth	81,932	1,087	75.4	406	219	127	76	259
Mayo	242,279	8,711	27.8	5,385	2,097	685	264	280
Meath	259,747	3,256	79.8	1,107	682	374	274	819
Monaghan	192,532	3,962	48.6	1,641	973	532	308	508
Offaly	210,149	2,889	72.7	808	672	412	296	701
Roscommon	178,336	5,022	35.5	2,434	1,492	567	273	256
Sligo	100,048	3,281	30.5	1,923	822	262	137	137
Tipperary	563,544	6,237	90.4	1,491	1,139	892	618	2,097
Waterford	223,465	2,069	108.0	425	322	245	223	854
Westmeath	184,594	2,828	65.3	951	677	383	236	581
Wexford	260,145	2,870	90.6	606	553	398	319	994
Wicklow	112,103	1,508	74.3	476	341	191	120	380
Total	6,135,172	105,687	58.1	43,356	23,789	12,407	7,691	18,444

Imported Animals in the Live Herd at 31/12/2014

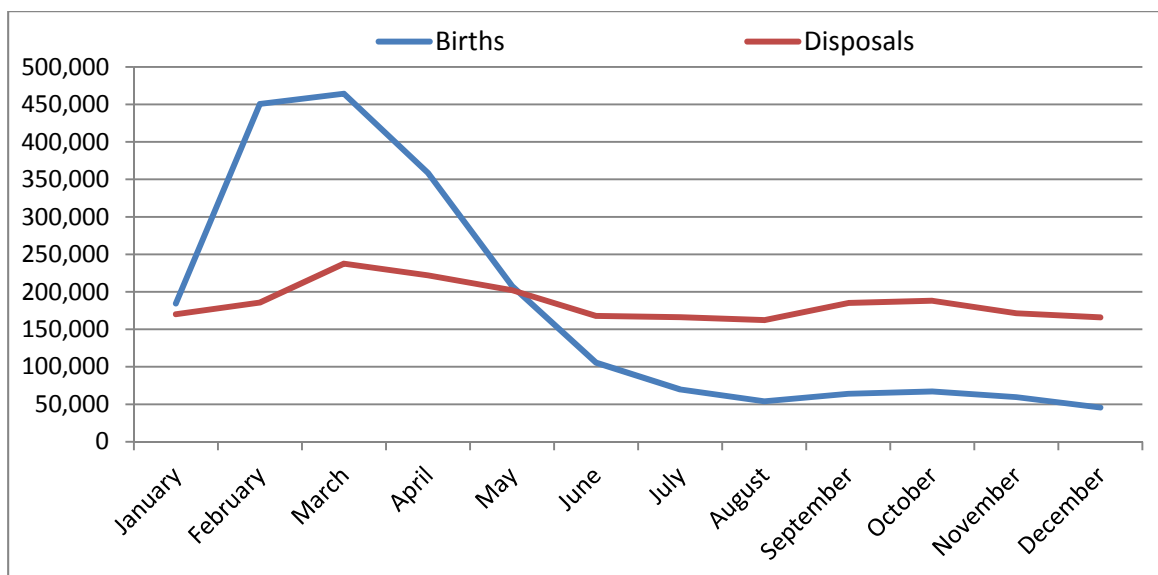
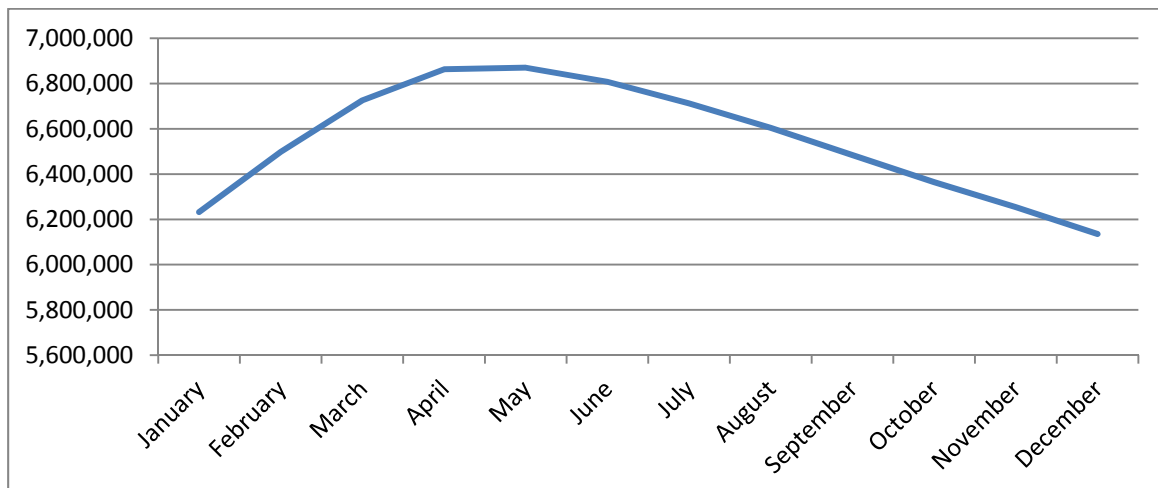
Country	Male	Female	Total
United Kingdom	1,677	4,391	6,068
France	185	1,420	1,605
Germany	3	1,547	1,550
Romania	28	683	711
Denmark	6	502	508
Netherlands	16	340	356
Austria	10	233	243
Italy	5	148	153
Sweden	1	37	38
Belgium	24	8	32
Lithuania	0	10	10
Czech Republic	0	1	1
Total	1,955	9,320	11,275

Bovine Density Map



Bovine Population 2014 by Month

	Population	Births	Imports	Disposals	Total	
Start Jan	6,216,838	184,431	1,170	170,217	6,232,222	End Jan
Start Feb	6,232,222	450,670	1,010	185,690	6,498,212	End Feb
Start Mar	6,498,212	464,196	705	237,665	6,725,448	End Mar
Start Apr	6,725,448	358,644	1,046	222,063	6,863,075	End Apr
Start May	6,863,075	207,777	977	202,088	6,869,741	End May
Start Jun	6,869,741	105,353	538	167,753	6,807,879	End Jun
Start Jul	6,807,879	69,668	410	165,982	6,711,975	End Jul
Start Aug	6,711,975	54,065	551	162,273	6,604,318	End Aug
Start Sep	6,604,318	63,928	761	185,146	6,483,861	End Sep
Start Oct	6,483,861	67,036	1,258	187,981	6,364,174	End Oct
Start Nov	6,364,174	59,528	1,872	171,497	6,254,077	End Nov
Start Dec	6,254,077	45,752	1,192	165,849	6,135,172	End Dec
Totals		2,131,048	11,490	2,224,204		



Chapter 5

Suppliers of Data



LIVESTOCK MARTS

No.	Livestock Mart	No.	Livestock Mart	No.	Livestock Mart
1	Abbeyfeale Mart	30	Castlerea Mart	59	Kingscourt Mart
2	Ardee Mart	31	Cavan Mart	60	Listowel Mart
3	Ashford Mart	32	Clifden Mart	61	Loughrea Mart
4	Athenry Mart	33	Clones Mart	62	Maam Cross Mart
5	Balla Mart	34	Connacht Mart	63	Macroom Mart
6	Ballina Mart	35	Cootehill Mart	64	Manorhamilton Mart
7	Ballinakill Mart	36	Dingle Mart	65	Milford Mart
8	Ballinasloe Mart	37	Donegal Mart	66	Milltown Mart
9	Ballybay Mart	38	Dowra Mart	67	Mohill Mart
10	Ballybofey Mart	39	Dromcollogher Mart	68	Mountbellew Mart
11	Ballyjamesduff Mart	40	Drumshanbo Mart	69	Mountrath Mart
12	Ballymahon Mart	41	Dungarvan Mart	70	Nenagh Mart
13	Ballymote Mart	42	Edenderry Mart	71	New Ross Mart
14	Ballyshannon Mart	43	Elphin Mart	72	Newport Mart
15	Baltinglass Mart	44	Enniscorthy Mart	73	Portumna Mart
16	Bandon Mart	45	Ennistymon Mart	74	Raphoe Mart
17	Birr Mart	46	Fermoy Mart	75	Roscommon Mart
18	Blessington Mart	47	Gort Mart	76	Roscrea Mart
19	Caherciveen Mart	48	Gortalea Mart	77	Scariff Mart
20	Cahir Mart	49	Granard Mart	78	Sixmilebridge Mart
21	Carlow Mart	50	Headford Mart	79	Skibbereen Mart
22	Carnaross Mart	51	Inishowen Mart	80	Templemore Mart
23	Carnew Mart	52	Kanturk Mart	81	Thurles Mart
24	Carrick-on-Shannon Mart	53	Kenmare Mart	82	Tipperary Mart
25	Carrick-on-Suir Mart	54	Kilcullen Mart	83	Tralee Mart
26	Carrigallen Mart	55	Kilfenora Mart	84	Tuam Mart
27	Cashel Mart	56	Kilkenny Mart	85	Tullamore Mart
28	Castleblayney Mart	57	Kilmallock Mart	86	Tullow Mart
29	Castleisland Mart	58	Kilrush Mart		

LOCAL AUTHORITY ABATTOIRS

No.	Local Authority Abattoir	County	No.	Local Authority Abattoir	County
1	Clonmore Meats	Carlow	50	Mark Robinson	Donegal
2	Laurence & James Murphy	Carlow	51	Mich. McGettigan	Donegal
3	Argue Meats	Cavan	52	Richard Walsh	Donegal
4	Anthony McGurran	Cavan	53	Teagasc Food Research Centre	Dublin
5	Donoghues Foodfare	Cavan	54	Burkes Meats (Kinvara)	Galway
6	Fergal Hartford	Cavan	55	Eugene Mcentee	Galway
7	James Smith	Cavan	56	Hugh O'Donnell	Galway
8	John Donnelly	Cavan	57	John Joe Brady	Galway
9	Kevin Heery	Cavan	58	Justin Flannery	Galway
10	Leonard Lynch	Cavan	59	Sean Farrell	Galway
11	Mullagh Meats	Cavan	60	Thomas Lydon	Galway
12	Patrick Gaynor	Cavan	61	Tom Conroy	Galway
13	Robert Richardson	Cavan	62	Ashe Meats	Kerry
14	Thomas Gaynor & Sons	Cavan	63	Benny McDonnell	Kerry
15	Denis Corcoran	Clare	64	Cahillanes Spec.Butchers	Kerry
16	Edward Joyce	Clare	65	Iveragh Meats	Kerry
17	Ennis Abattoirs	Clare	66	James Curran	Kerry
18	James & Joseph Kelly	Clare	67	James J. Walsh	Kerry
19	John Kelly	Clare	68	Jerry Houlihan	Kerry
20	Martin Haugh	Clare	69	John Burke	Kerry
21	Sean G. Haugh	Clare	70	John O'Connell	Kerry
22	Christopher Collins	Cork	71	Michael Houlihan	Kerry
23	Cornelius Cronin	Cork	72	Richard G. Behan	Kerry
24	Dan Moloney	Cork	73	Ring Of Kerry Meats	Kerry
25	Daniel Lordan	Cork	74	Ring Of Kerry Quality Lamb Society	Kerry
26	Daniel P. Murphy & Sons	Cork	75	Roger J. O'Sullivan	Kerry
27	Eddie & Denis Fitzgerald	Cork	76	Sneem Meats	Kerry
28	Edmond Clifford	Cork	77	T. Hennessy	Kerry
29	Feoil O'Criostoir Teoranta	Cork	78	Thomas M. Kelly	Kerry
30	James & Patrick J Collins	Cork	79	William O'Leary	Kerry
31	Jerry Nolan	Cork	80	Derek Nolan	Kildare
32	John Finn	Cork	81	James Nolan	Kildare
33	John Mccarthy	Cork	82	Niall & James O'Gorman	Kildare
34	Liam O'Driscoll	Cork	83	Paschal Greaney	Kildare
35	Malachy O'Sullivan	Cork	84	Gerry O'Brien	Kilkenny
36	Michael Bresnan	Cork	85	June Prendergast	Kilkenny
37	Michael J. O'Neill	Cork	86	Patrick Kenna	Kilkenny
38	Michael O'Keeffe	Cork	87	Tynan Meats	Kilkenny
39	Michael Spillane	Cork	88	Andrew Shiel	Laois
40	Patrick Hegarty Butchers	Cork	89	John Cahill	Laois
41	Patrick O'Donoghue	Cork	90	Kevin Bracken	Laois
42	Sheehan Butchers	Cork	91	Michael Dowling	Laois
43	T.G. McCarthy & Sons	Cork	92	Michael Keegan	Laois
44	Thomas Walsh	Cork	93	Michael Tynan	Laois
45	Tim Murphy	Cork	94	P.J. Delaney	Laois
46	Timmy Considine	Cork	95	Pius Hennessy	Laois
47	Anthony McGettigan	Donegal	96	Tomas Kenna	Laois
48	Charles Gallagher	Donegal	97	Damien Thornton	Leitrim
49	Jonathan Kerr	Donegal	98	Douglas Boyd	Leitrim

No.	Local Authority Abattoir	County	No.	Local Authority Abattoir	County
99	John O'Malley	Leitrim	148	Benedict Morris	Roscommon
100	Mary Ellen & Hugh Logan	Leitrim	149	Boyle Country Meats	Roscommon
101	Sean McMorrow	Leitrim	150	Cyril McHugh	Roscommon
102	Sean Rooney	Leitrim	151	Gilligans Farm Fresh Meats	Roscommon
103	Thomas McHugh	Leitrim	152	Ignatius Gannon	Roscommon
104	Ashgrove Wholesale	Limerick	153	Joseph Regan	Roscommon
105	Denis Greaney	Limerick	154	Mccabe Abattoirs	Roscommon
106	Denis O'Sullivan	Limerick	155	Michael Webb	Roscommon
107	Edmund O'Connor	Limerick	156	Oliver Harte	Roscommon
108	Gaelic Meat & Livestock Co.	Limerick	157	Stanley Taylor	Roscommon
109	Michael O'Rourke	Limerick	158	Noel Wynne (Wynnes Meats)	Sligo
110	Nicholas P. Cooke	Limerick	159	Patrick Gerry Burns	Sligo
111	Patrick Creamer	Limerick	160	Andrew English	Tipperary
112	Patrick J. Burns	Limerick	161	Charles Williams	Tipperary
113	Sean Fitzgerald	Limerick	162	D. and F. Walsh	Tipperary
114	William Barry	Limerick	163	Eddie Lacey	Tipperary
115	John Campbell	Longford	164	James O'Malley	Tipperary
116	Ronald Rawle	Longford	165	John Hogan	Tipperary
117	Terry McLoughlin	Longford	166	John O'Dwyer	Tipperary
118	Desmond Savage	Louth	167	Joseph Hammersley	Tipperary
119	Anthony Heffernan	Mayo	168	Kevin Dalton	Tipperary
120	Edward Phillips	Mayo	169	Liam Treacy Victuallers	Tipperary
121	Gerard & Val McGreal	Mayo	170	Martin O'Dwyer	Tipperary
122	James Duffy	Mayo	171	Michael & Maurice Whelan	Tipperary
123	James Molloy	Mayo	172	Robert Colm Lewis	Tipperary
124	John Moore	Mayo	173	Thomas Myles	Tipperary
125	Martin Paul Maloney	Mayo	174	Tom Hallinan	Tipperary
126	Paddy Reilly	Mayo	175	Whelan Meat & Food Processing	Tipperary
127	Philip Gibbons	Mayo	176	William G. Fitzgibbon	Tipperary
128	Seamus Hawkshaw	Mayo	177	Donal O'Reilly	Waterford
129	Sean F. Kelly	Mayo	178	Michael McGrath	Waterford
130	Thomas P. Byrne	Mayo	179	Robert Flynn - Flynn Meats	Waterford
131	Tony Carolan	Mayo	180	Bernard Troy	Westmeath
132	William Jennings	Mayo	181	Camillus Cleary	Westmeath
133	Coogan Meats	Meath	182	Cannon & Cole	Westmeath
134	Ard Na Rí Meats	Meath	183	Declan Lenihan	Westmeath
135	Flood's Butchers	Meath	184	Hugh Murray	Westmeath
136	Michael Brogan & Sons	Meath	185	Joe Tynan	Westmeath
137	Traditional Meat Coy	Meath	186	John Horan	Westmeath
138	William Donnelly & Son	Meath	187	Moate Meats	Westmeath
139	Gerard & Martin Quinn	Monaghan	188	Peter McGuinness	Westmeath
140	Hugh & Patrick J. Maguire	Monaghan	189	Shane Dunning	Westmeath
141	James Duffy	Monaghan	190	Shane Maher	Westmeath
142	James Shortt	Monaghan	191	Christopher Byrne	Wexford
143	Dominic Feely Feely Meats	Offaly	192	Richard Doyle	Wexford
144	Michael & Eileen Healy	Offaly	193	Anthony & Padraig Farrelly	Wicklow
145	Ossory Meats	Offaly	194	Damien Murphy	Wicklow
146	Paul Boyd	Offaly	195	Myles Doyle	Wicklow
147	William Browne	Offaly			

APPROVED EXPORT POINTS

Approved Export Point	Approved Export Point
Carlow Mart, Carlow	Golden Vale Mart, Leitrim
Tullow Mart, Carlow	Manorhamilton Mart, Leitrim
Ballyjamesduff Co Op Mart Ltd., Cavan	Mohill Mart, Leitrim
Binnacle Ltd, Cavan	Bothar, Limerick
Dowra Marts Ltd., Cavan	Jerry Casey, Limerick
James O'Reilly, Cavan	Granard Farmers Mart Ltd., Longford
Kingscourt Marts Ltd., Cavan	Longford/Westmeath Farmers Mart, Longford
Clare Marts Ltd., Clare	Patrick Fox, Longford
Bandon Mart, Cork	Ardee Mart, Louth
Murphy Hunter, Cork	Laragh Livestock Group Ltd., Louth
Patrick Kelleher, Cork	Connacht Gold Mart, Mayo
Ballybofey Stranorlar Mart, Donegal	Henry Dixon, Mayo
Ballyshannon Mart, Donegal	Mayo-Sligo Co Op Mart, Mayo
Burnfoot Mart, Donegal	Carnaross Mart, Meath
Donegal Co Op Livestock Mart Ltd., Donegal	James Mallon, Meath
East Donegal Co Op Mart, Donegal	Sean O'Connell, Meath
Harold J Wilson Ltd., Donegal	Ballybay Co Op Livestock Sale, Monaghan
Inishowen Co Op Society Ltd., Donegal	Castleblayney Mart, Monaghan
Milford Mart, Donegal	Central Auctions, Offaly
Frank Lenihan, Dublin	Tullamore Mart, Offaly
Athenry Co Op Mart Ltd., Galway	Castlerea Livestock Mart, Roscommon
Ballinasloe Co Op Mart Ltd., Galway	Elphin Co Op Livestock Mart Ltd., Roscommon
Gort Co Op Livestock Mart Ltd., Galway	Midland & Western Livestock, Roscommon
Tuam Co Op Livestock Mart, Galway	Roscommon Co Op Mart Ltd., Roscommon
Castleisland Co Op Mart Ltd., Kerry	Ballymote Mart, Sligo
Listowel Livestock Market Ltd., Kerry	Central Auctions, Tipperary
Mark Hallissey, Kerry	Central Auctions, Tipperary
Mid Kerry Co Op Mart Ltd., Kerry	Dungarvan Mart, Waterford
Buitelaar Int. Trading Ltd., Kildare	Mullingar Livestock Agency Ltd., Westmeath
Naas Mart , Kildare	Quinn International, Westmeath
Hennessy Calf Farm, Kilkenny	S.Garavelli , Westmeath
Kilkenny Co Op L Market Ltd., Kilkenny	Enniscorthy Mart, Wexford
Mountrath Mart, Laois	Waterford/Ross Co Op Mart Ltd., Wexford
Drumshanbo Mart Plc., Leitrim	Joyce Scallan, Wicklow

LICENSED KNACKERIES

Licensed Knackery	Licensed Knackery
Moyle Animal Collection Ltd, Carlow	County Limerick Hunt Club, Limerick
Fallen Animal Coll. Service, Carlow	Limerick Regional Vet. Lab., Limerick
Harefort Ltd., Cavan	John McGuinness, Longford
Kevin Mulvaney, Cavan	Lks Disposals Ltd., Louth
James Lambe, Cavan	Finbar & Kevin Donohue Ltd., Meath
Vincent Coffey Sons Limited, Clare	Nugentstown Coll. Serv. Mth. Ht., Meath
Carberry Hunt Kennels, Cork	John O'Rourke & Sons, Meath
W Fitzgerald T/A Bride View, Cork	Ward Union Hunt, Meath
Liam Duggan, Cork	Oldcastle Laboratories Ltd., Meath
Bartlemy Road Ltd., Cork	John Costelloe, Offaly
Barrett Animal Col Serv Ltd., Cork	Midland Animalcollection Ltd., Roscommon
Finbarr Murray, Cork	Maloney & Matthews, Sligo
Jim Murray, Cork	Sligo Regional Vet. Lab., Sligo
Collins Brothers, Cork	Tipperary Foxhounds, Tipperary
Cork Regional Vet. Lab., Cork	Beechfield Products Ltd., Tipperary
Faculty Of Veterinary Medicine, Dublin	Michael Duggan, Tipperary
Central Vet Research Lab., Kildare	Richard Keane, Tipperary
J & K Greene Ahascragh Ltd., Galway	Golden Vale Hunt, Tipperary
Madden Animal Collect Serv., Galway	Suir Vale Harriers, Tipperary
Kildare Hunt Club, Kildare	David Flanagan, Tipperary
South Kilkeny Foxhounds, Kilkeny	Patrick Morrissey Ltd., Tipperary
Kilkeny Fallen Stock Serv., Kilkeny	John Marsh, Tipperary
Kilkeny Regional Vet. Lab., Kilkeny	Nicholas Hannigan, Waterford
Michael Lawless, Laois	Westmeath Hunt Kennels, Westmeath
John Styles, Laois	Athlone Regional Vet. Lab., Westmeath
Ward Waste Products Ltd., Limerick	Lawrence Earle, Wexford

FACTORIES

Factory	Factory
Ballon Meats, Carlow	Dunleavy Meats, Mayo
Liffey Meats Ltd., Carlow	Martin Jennings Wholesales, Mayo
Liffey Meats Ltd., Cavan	Dunbia (Slane), Meath
Anglo Beef Processors Irl., Cork	Euro Farm Foods, Meath
Dawn Meats Ireland, Cork	Kepak Clonee, Meath
Finns Meats, Cork	Anglo Beef Processors Irl., Monaghan
Kepak Cork, Cork	Ballaghaderreen Bacon Ltd., Roscommon
Donegal Meat Processors Ltd., Donegal	Kepak Athleague, Roscommon
Edenmore Farm Meats Ltd., Donegal	Anglo Beef Processors Irl., Tipperary
O'Connor Meats, Galway	Anglo Beef Processors Irl., Tipperary
Kildare Chilling Co., Kildare	Ashbourne Meats Roscrea, Tipperary
Moyvalley Meats (Irl.), Kildare	Anglo Beef Processors Irl., Waterford
Meadow Meats Ltd., Laois	Dawn Grannagh, Waterford
Anglo Beef Processors Irl., Limerick	Kepak Kilbeggan, Westmeath
Glynn Meats Ltd., Limerick	Kavanagh Meats, Wexford
Dawn Ballyhaunis, Mayo	Slaney Foods Intl. Ltd., Wexford

OFFICIAL LIST OF BREED CODES

Breed	Code	Breed	Code
ANGUS	AA	LITHUANIAN BLACK & WHITE	LJ
ANKOLE	AK	LIMOUSIN	LM
ARMORICAINE	AM	LINCOLN RED	LR
ANGLER	AN	LUING	LU
AUBRAC	AU	MAINE ANJOU	MA
AYRSHIRE	AY	MARCHIGIANA	MH
BLONDE D'AQUITANE	BA	MALKEKORTHORN	MK
BELGIAN BLUE	BB	MONTBELLARDE	MO
BEEFALO	BE	BLENDED MILKING SHORTHORN	MS
WATER BUFFALO	BF	MRI/MRY	MY
BLUE GREY	BG	NORMANDE	NO
BISON	BI	NORWEGIAN RED	NR
BLUE ALBION	BL	OLD ENGLISH	OE
BRETONNE PIE-NOIRE	BP	PIEDMONTESE	PI
BRAHMAN	BR	PUSTERTALER SPRINZEN	PS
BROWN SWISS	BS	PARTHENAISE	PT
BALTATA ROMANEASCA	BT	PINZGAUER	PZ
BRITISH WHITE	BW	ROTBUNTE	RB
BELTED GALLOWAY	BY	DANISH RED	RD
BAZADAIS	BZ	REGGIANA	RE
CANADIAN BLACK	CB	ROMAGNOLA	RM
CHAROLAIS	CH	RED POLL	RP
CHIANINA	CI	SALERS	SA
CHILLINGHAM	CL	SOUTH DEVON	SD
DEVON	DE	SWISS GREY	SG
DEXTER	DX	SHORTHORN	SH
DWARF ZEBU	DZ	SIMMENTAL	SI
EAST FINNISH BROWN	EF	SHETLAND	SL
ENGLISH PARK	EP	SPECKLE PARK	SP
FRISONA ESPAGNOLA	FE	SWEDISH RED	SR
HOLSTEIN/FRIESIAN	FR	STABILISER	ST
GALLOWAY	GA	SUSSEX	SU
GRONINGER BLAARKOP	GB	TARANTAISE-TARINA	TT
GASCONNE	GC	TYRONE BLACK	TY
GLOUCESTER	GL	VAYNOL	VA
MURRAY GREY	GS	VERBETERD ROODBONT VLEESRAS	VB
GUERNSEY	GU	VALDOSTANA NERA	VN
GELBVIEH	GV	VOSGIENNE	VO
GAYAL	GY	WAGYU	WA
HEREFORD	HE	WELSH BLACK	WB
HIGHLAND	HI	WHITE GALLOWAY	WG
DROIMEANN	IM	WHITE PARK	WP
IRISH MAOL	IM	WELSH WHITE	WW
JERSEY	JE	YAK	YK
KERRY	KE	ZEBU	ZE
LONGHORN	LH		

In the case of a crossbreed sire or dam, add an 'X' to the code