

**Agriculture,
Fisheries and Food**
An Roinn
**Talmhaíochta,
Iascaigh agus Bia**

CMMS STATISTICS REPORT 2007

COUNTY MILKING MACHINE SURVEY

County	Number of Machines	Percentage of Total
DONEGAL	58,116	2.8%
LEITRIM	31,017	1.5%
SLIGO	42,008	2.0%
MAYO	96,743	4.6%
ROSCOMMON	61,414	2.9%
Cavan	79,030	3.8%
MONAGHAN	63,302	3.0%
LOUTH	21,836	1.0%
LONGFORD	35,151	1.7%
WESTMEATH	54,304	2.6%
MEATH	72,871	3.5%
WEXFORD	64,477	3.1%
WICKLOW	77,002	3.7%
KILDARE	58,701	2.8%
KERRY	74,771	3.6%
CLARE	104,215	5.0%
CO. DUBLIN	1,000,000	48.0%
CO. DUBLIN	1,000,000	48.0%

All rights reserved. No part of this publication may be reproduced, stored in a retrieval system, or transmitted in any form or by any means, electronic, mechanical, photocopying, recording or otherwise without acknowledgement of the source.

CMMS STATISTICS REPORT 2007





CONTENTS

Chapter 1 - calf birth registration data	5
Calf Births 2007 by Month	7
Calf Births 2007 by Month and by Gender	7
Calf Births 2007 by County	8
Calf Births 2007 by County, by Gender and by Sire Type	9
Number of Calves per Breeding Herd	10
Total Number of Beef and Dairy Calves by County	11
Percentage Calving of Dairy Cows by County	12
Percentage Calving of Beef Cows by County	13
Calf Births 2007 by Month and Sire Type	14
Calf Births 2007 by Month, Gender and Sire Type	14
Calf Births 2007 by Month and by Breed of Dam	15
Sire Selection for Beef Dams	16
Sire Selection for Dairy Dams	16
Breed Composition of 2007 Born Calves	17
Cattle Imports 2007 by Country of Origin and Gender	18
Cattle Imports 2007 by Country of Origin and Breed	18
 Chapter 2 - movement data	 19
Mart Movements 2007 by Month and by Gender	20
Age Breakdown of Mart Movements For Beef Cattle by month and by gender	21
Age Breakdown of Mart Movements For Dairy Cattle by month and by gender	22
Farm to Farm Movements 2007 by Month and by Gender	23
Age Breakdown of Farm to Farm Movements For Beef Cattle by month and by gender	24
Age Breakdown of Farm to Farm Movements For Dairy Cattle by month and by gender	25
All Cattle Movements by Month and by Type	26
All Cattle Movements by Month and by Gender	27
 Chapter 3 - disposal of cattle	 29
Overall Summary of Cattle Disposals and On Farm Deaths 2007	30
Cattle Disposals in Factories 2007 by Month and by Gender	31
Age Profile of Factory Slaughtering 2007 for Beef Cattle by month and by gender	32
Age Profile of Factory Slaughtering 2007 for Dairy Cattle by month and by gender	32
Cattle Disposals in Local Authority Licensed Abattoirs 2007	33
Age Profile of Abattoir Slaughtering 2007 for Beef Cattle by month and by gender	34
Age Profile of Abattoir Slaughtering 2007 for Dairy Cattle by month and by gender	34
On Farm Deaths 2007 by month and by gender	35
Age Profile of On Farm Deaths 2007 for Male Beef cattle by month	36
Age Profile of On Farm Deaths 2007 for Female Beef cattle by month	36

CONTENTS

Age Profile of On Farm Deaths 2007 for Male Dairy cattle by month	37
Age Profile of On Farm Deaths 2007 for Female Dairy cattle by month	37
Stillborn Calves 2007 by month and by gender	38
Stillborn Calves 2007 by month and by gender and sire type	38
Live Exports 2007 by month and by gender	39
Age Profile of Live Exports 2007 for Beef Cattle by month and by gender	40
Age Profile of Live Exports 2007 for Dairy Cattle by month and by gender	41
Destination of Live Exports	42
Age Profile of Live Exports 2007 by Breed	42
Destination of Live Exports by Age	43

Chapter 4 - national herd data 45

Age Profile of Live Herd at 31/12/2007 by gender	46
Age Profile of Live Herd at 31/12/2007 by county	47
Age Profile of Live Herd at 31/12/2007 by Breed	48
Profile of Live Herd at 31/12/2007 by county and by breed code	49
Profile of Herd Size at 31/12/2007	50
Imported Animals in the Live Herd at 31/12/2007	51
Bovine Population 2007	52

Chapter 5 - suppliers of CMMS data 2007 53

Livestock Marts	54
Local Authority Abattoirs	55
Approved Export Points	57
Licensed Knackeries	58
Factories	59

APPENDIX 60

CHAPTER 1 calf birth registration data



Register calf births online and save time



- Save Time
- Save Hassle
- Track Your Herd



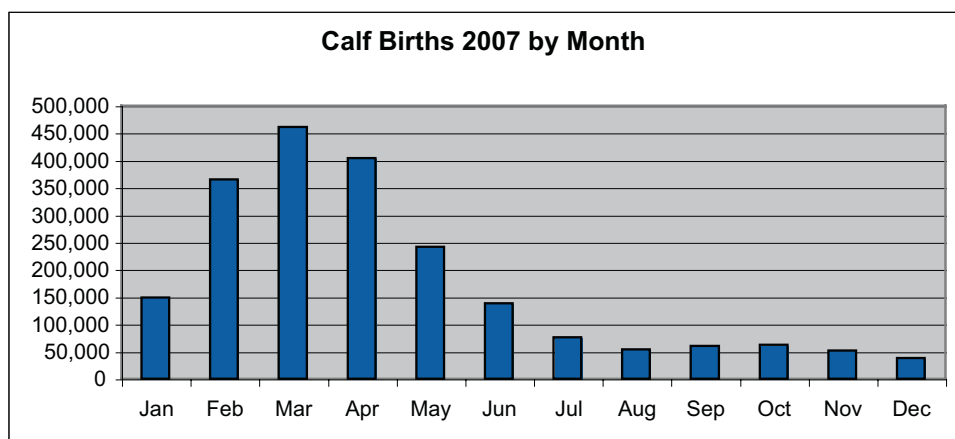
Register for on-line services at
www.agfood.ie

www.agriculture.gov.ie/es



Department of
**Agriculture,
Fisheries and Food**
An Roinn
**Talmhaíochta,
Iascaigh agus Bia**

Calf Births 2007 by Month



Calf Births 2007 by Month and by Gender

	Male	Female	Total
JANUARY	73,904	75,287	149,191
FEBRUARY	186,429	178,087	364,516
MARCH	236,781	223,711	460,492
APRIL	207,934	196,200	404,134
MAY	124,256	117,430	241,686
JUNE	71,160	66,658	137,818
JULY	39,240	37,210	76,450
AUGUST	27,412	26,563	53,975
SEPTEMBER	30,536	29,960	60,496
OCTOBER	31,814	30,301	62,115
NOVEMBER	26,407	25,130	51,537
DECEMBER	19,671	18,642	38,313
TOTAL	1,075,544	1,025,179	2,100,723

Calf Births 2007 by County

Ch 1

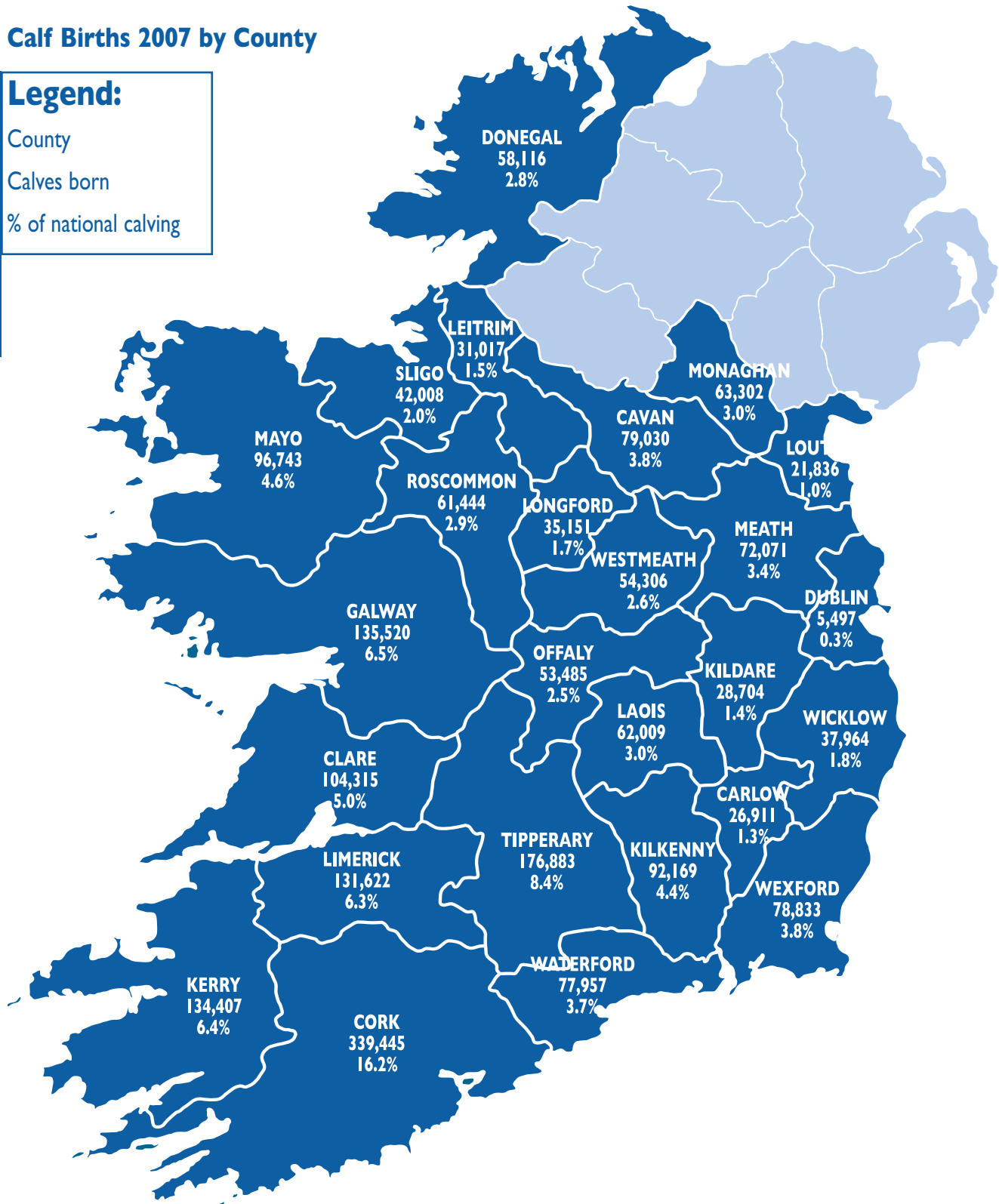
Legend:

County

Calves born

% of national calving

SECTION I



Calf Births 2007 by County, by Gender and by Sire Type

County	Calves born to a beef bull			Calves born to a dairy bull			Overall Total	% of total
	Male	Female	Total	Male	Female	Total		
CARLOW	10,919	10,742	21,661	2,734	2,516	5,250	26,911	1.3
CAVAN	32,511	31,114	63,625	7,852	7,553	15,405	79,030	3.8
CLARE	47,429	45,450	92,879	5,737	5,699	11,436	104,315	5.0
CORK	102,847	97,077	199,924	71,231	68,290	139,521	339,445	16.2
DONEGAL	25,155	24,201	49,356	4,427	4,333	8,760	58,116	2.8
DUBLIN	2,214	2,087	4,301	609	587	1,196	5,497	0.3
GALWAY	63,618	60,774	124,392	5,673	5,455	11,128	135,520	6.5
KERRY	47,506	44,576	92,082	21,547	20,778	42,325	134,407	6.4
KILDARE	12,052	11,071	23,123	2,836	2,743	5,579	28,702	1.4
KILKENNY	32,886	30,630	63,516	14,423	14,230	28,653	92,169	4.4
LAOIS	24,729	23,433	48,162	7,013	6,834	13,847	62,009	3.0
LEITRIM	15,341	14,716	30,057	495	465	960	31,017	1.5
LIMERICK	45,691	42,853	88,544	21,766	21,312	43,078	131,622	6.3
LONGFORD	16,276	15,858	32,134	1,544	1,453	2,997	35,131	1.7
LOUTH	7,576	7,056	14,632	3,638	3,566	7,204	21,836	1.0
MAYO	45,784	43,695	89,479	3,621	3,643	7,264	96,743	4.6
MEATH	25,669	24,656	50,325	11,017	10,729	21,746	72,071	3.4
MONAGHAN	25,055	23,931	48,986	7,295	7,021	14,316	63,302	3.0
OFFALY	22,489	21,289	43,778	4,945	4,762	9,707	53,485	2.5
ROSCOMMON	30,356	29,166	59,522	981	941	1,922	61,444	2.9
SLIGO	19,770	18,832	38,602	1,704	1,702	3,406	42,008	2.0
TIPPERARY	61,968	58,040	120,008	29,016	27,859	56,875	176,883	8.4
WATERFORD	25,203	23,856	49,059	14,849	14,049	28,898	77,957	3.7
WESTMEATH	23,291	22,167	45,458	4,351	4,497	8,848	54,306	2.6
WEXFORD	29,132	27,618	56,750	11,369	10,714	22,083	78,833	3.8
WICKLOW	15,166	14,514	29,680	4,238	4,046	8,284	37,964	1.8
TOTAL	810,633	769,402	1,580,035	264,911	255,777	520,688	2,100,723	

Ch 1

SECTION I

Number of Calves per Breeding Herd

Ch 1

SECTION I

COUNTY	No of Breeding Herds	1 - 10	11 - 24	25 - 49	50 - 74	75 +
CARLOW	1,020	300	289	272	114	45
CAVAN	3,961	1,524	1,316	826	200	95
CLARE	5,179	1,794	1,927	1,100	264	94
CORK	9,222	2,010	2,081	2,606	1,517	1,008
DONEGAL	4,445	2,822	1,068	366	110	79
DUBLIN	240	117	56	34	21	12
GALWAY	9,236	4,780	2,824	1,279	258	95
KERRY	5,336	1,934	1,485	1,136	487	294
KILDARE	1,132	433	275	258	101	65
KILKENNY	2,503	443	592	783	443	242
LAOIS	2,048	529	573	556	240	150
LEITRIM	2,821	1,743	847	200	25	6
LIMERICK	3,984	1,065	928	1,009	602	380
LONGFORD	1,947	775	714	359	70	29
LOUTH	797	291	205	168	76	57
MAYO	8,124	4,894	2,355	734	102	39
MEATH	2,380	784	598	547	234	217
MONAGHAN	3,084	1,159	1,015	629	219	62
OFFALY	2,149	740	585	541	183	100
ROSCOMMON	4,267	2,116	1,440	597	91	23
SLIGO	3,072	1,657	983	351	57	24
TIPPERARY	4,887	961	1,138	1,501	790	497
WATERFORD	1,722	295	314	466	337	310
WESTMEATH	2,161	730	630	526	179	96
WEXFORD	2,455	603	617	715	327	193
WICKLOW	1,318	378	408	311	130	91
TOTAL	89,490	34,877	25,263	17,870	7,177	4,303

Total Number of Beef and Dairy Calves by County*

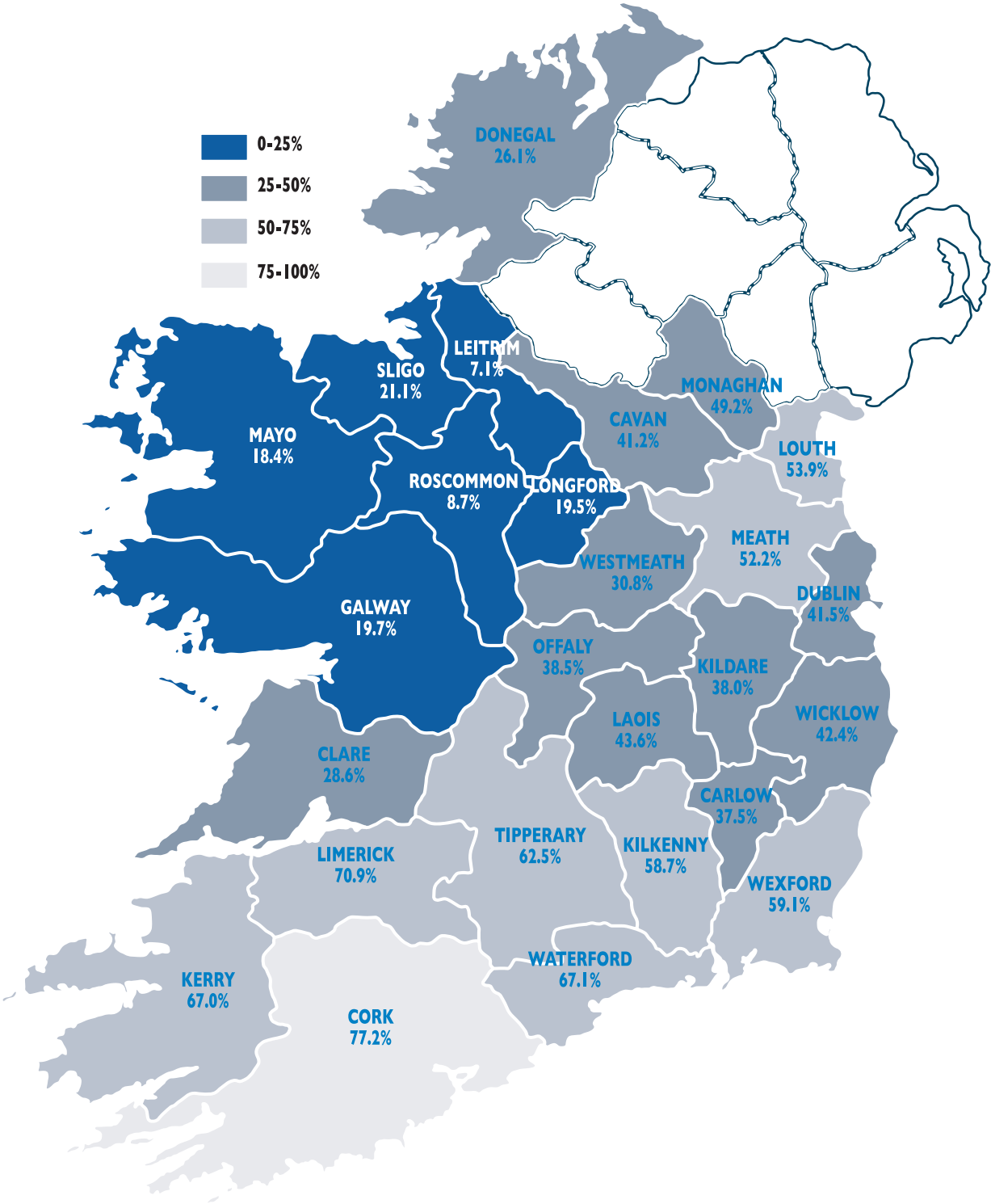
COUNTY	Total Calves	Beef Calves	% Beef	Dairy Calves	% Dairy
CARLOW	26,911	16,821	62.5	10,090	37.5
CAVAN	79,030	46,486	58.8	32,544	41.2
CLARE	104,315	74,491	71.4	29,824	28.6
CORK	339,445	77,349	22.8	262,096	77.2
DONEGAL	58,116	42,939	73.9	15,177	26.1
DUBLIN	5,497	3,216	58.5	2,281	41.5
GALWAY	135,520	108,822	80.3	26,698	19.7
KERRY	134,407	44,397	33.0	90,010	67.0
KILDARE	28,702	17,792	62.0	10,910	38.0
KILKENNY	92,169	38,058	41.3	54,111	58.7
LAOIS	62,009	34,949	56.4	27,060	43.6
LEITRIM	31,017	28,821	92.9	2,196	7.1
LIMERICK	131,622	38,304	29.1	93,318	70.9
LONGFORD	35,131	28,267	80.5	6,864	19.5
LOUTH	21,836	10,056	46.1	11,780	53.9
MAYO	96,743	78,907	81.6	17,836	18.4
MEATH	72,071	34,458	47.8	37,613	52.2
MONAGHAN	63,302	32,184	50.8	31,118	49.2
OFFALY	53,485	32,910	61.5	20,575	38.5
ROSCOMMON	61,444	56,095	91.3	5,349	8.7
SLIGO	42,008	33,135	78.9	8,873	21.1
TIPPERARY	176,883	66,415	37.5	110,468	62.5
WATERFORD	77,957	25,611	32.9	52,346	67.1
WESTMEATH	54,306	37,593	69.2	16,713	30.8
WEXFORD	78,833	32,236	40.9	46,597	59.1
WICKLOW	37,964	21,880	57.6	16,084	42.4
TOTAL	2,100,723	1,062,192	50.6	1,038,531	49.4

* FOR THE PURPOSE OF THIS TABLE BEEF AND DAIRY CALVES ARE DEFINED BY BREED OF DAM.

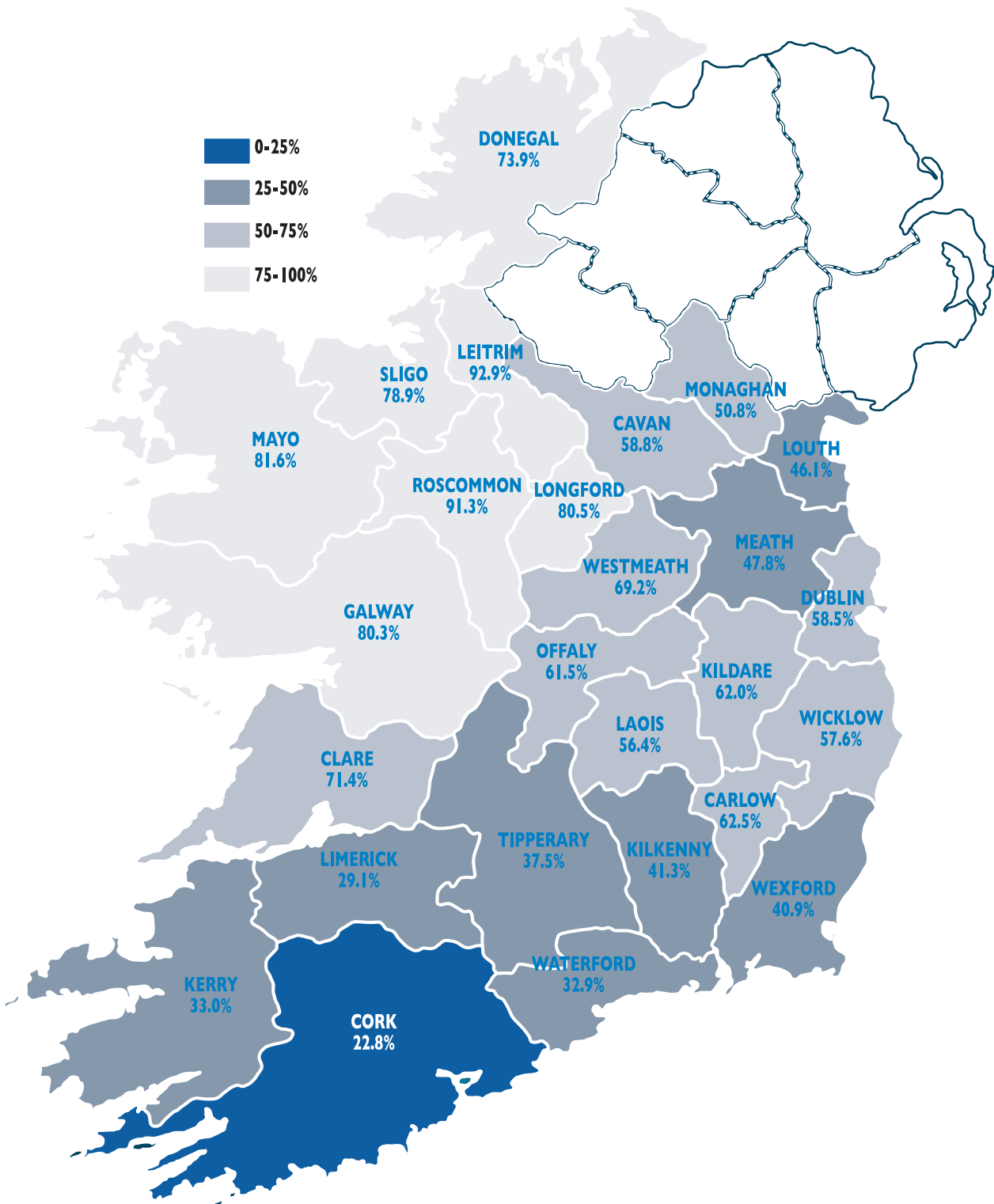
Percentage Calving by Dairy Cows by County

Ch 1

SECTION I



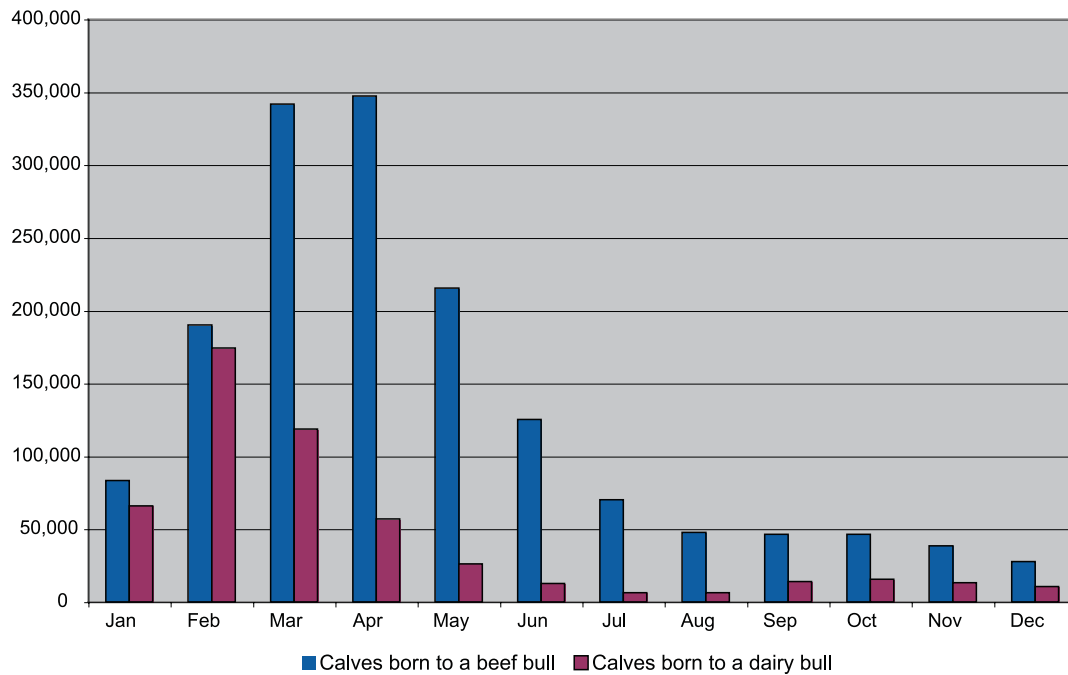
Percentage Calving by Beef Cows by County



Ch 1

SECTION 2

Calf Births 2007 by Month and Sire Type



Calf Births 2007 by Month, Gender and Sire Type

	Calves born to a Beef Bull			Calves born to a Dairy Bull			Total
	Male	Female	Total	Male	Female	Total	
JANUARY	42,069	41,167	83,236	31,835	34,120	65,955	149,191
FEBRUARY	97,286	92,843	190,129	89,143	85,244	174,387	364,516
MARCH	175,346	166,375	341,721	61,435	57,336	118,771	460,492
APRIL	178,638	168,513	347,151	29,296	27,687	56,983	404,134
MAY	111,049	104,439	215,488	13,207	12,991	26,198	241,686
JUNE	64,807	60,460	125,267	6,353	6,198	12,551	137,818
JULY	36,140	34,077	70,217	3,100	3,133	6,233	76,450
AUGUST	24,255	23,394	47,649	3,157	3,169	6,326	53,975
SEPTEMBER	23,501	23,033	46,534	7,035	6,927	13,962	60,496
OCTOBER	23,667	22,810	46,477	8,147	7,491	15,638	62,115
NOVEMBER	19,635	18,782	38,417	6,772	6,348	13,120	51,537
DECEMBER	14,240	13,509	27,749	5,431	5,133	10,564	38,313
	810,633	769,402	1,580,035	264,911	255,777	520,688	2,100,723

Calf Births 2007 by Month and by Breed of Dam

	FR	LM	CH	SI	HE	AA	BB	SH	MO	Other*	SA	RB	BA	JE	MY	Total
Jan	86,811	15,509	13,386	9,269	7,152	6,673	3,392	1,837	1,948	788	486	713	410	419	398	149,191
Feb	254,701	23,360	20,979	15,952	12,312	11,925	5,433	3,252	6,811	2,358	813	2,661	600	2,191	1,168	364,516
Mar	238,622	53,447	48,234	30,575	26,503	26,249	10,922	7,220	7,493	2,535	1,811	2,347	1,261	1,997	1,276	460,492
Apr	158,860	62,227	58,506	31,900	29,054	29,585	12,016	8,485	5,375	1,872	1,828	1,277	1,442	937	770	404,134
May	84,905	39,758	39,437	19,702	18,599	18,808	7,774	5,399	2,897	1,099	1,148	542	943	323	352	241,686
Jun	42,905	23,939	24,588	11,810	11,300	11,497	4,846	3,239	1,390	598	649	237	487	150	183	137,818
Jul	20,497	13,760	14,753	7,030	7,016	6,701	2,830	1,872	644	420	363	72	322	68	102	76,450
Aug	14,188	10,488	10,002	4,960	5,005	4,625	1,950	1,209	469	281	305	66	310	52	65	53,975
Sep	21,252	10,936	8,919	5,299	4,435	4,558	2,103	954	567	336	404	93	370	146	124	60,496
Oct	23,053	11,384	8,555	5,472	4,295	4,201	2,094	933	712	340	348	88	402	113	125	62,115
Nov	20,299	9,000	6,708	4,721	3,356	3,314	1,633	748	536	294	337	92	337	69	93	51,537
Dec	16,520	6,065	4,793	3,133	2,411	2,435	1,203	579	428	179	185	70	200	51	61	38,313
TOTAL	982,613	279,873	258,860	149,823	131,438	130,571	56,196	35,727	29,270	11,100	8,677	8,258	7,084	6,516	4,717	2,100,723

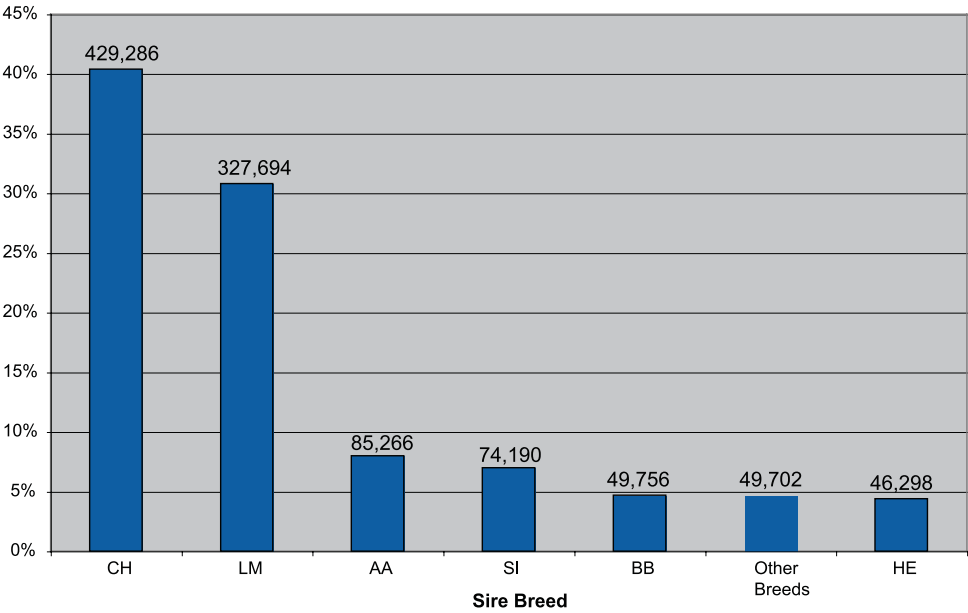
FR: Friesian **LM:** Limousin **CH:** Charolais **SI:** Simmental **HE:** Hereford
AA: Aberdeen Angus **BB:** Belgian Blue **SH:** Shorthorn **MO:** Montbéliarde **SA:** Salers
RB: Rotbunte **BA:** Blonde D'Aquitaine **JE:** Jersey **MY:** Meuse Rhine Yssel

* For full list of breeds see appendix

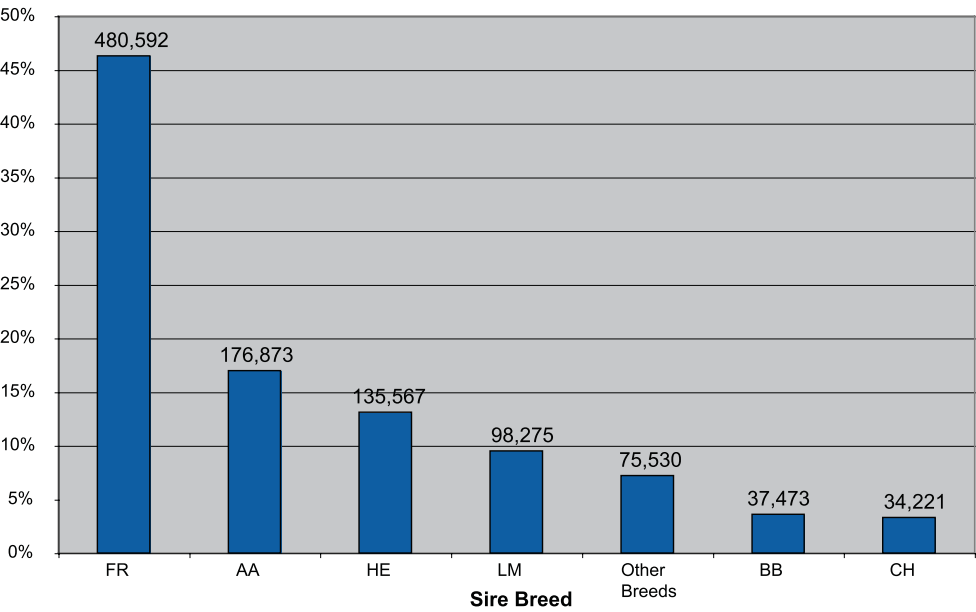
Ch 1

SECTION 4

Sire Selection for Beef Dams



Sire Selection for Dairy Dams



Breed Composition of 2007 Born Calves

BREED OF SIRE																	BREED OF DAM																
	FR	LM	CH	SI	HE	AA	BB	SH	MO	Other*	SA	RB	BA	JE	MY	Total																	
FR	467,460	916	427	1,192	1,281	1,298	723	529	5,257	1,686	11	2,514	19	2,860	908	487,081																	
HE	130,960	4,982	4,124	4,142	24,662	5,037	1,600	1,436	2,725	520	75	731	130	350	391	181,865																	
CH	31,132	89,675	162,231	54,307	44,814	43,307	18,928	10,849	2,210	879	2,957	231	1,607	98	282	463,507																	
SI	30,491	11,876	10,968	31,010	8,968	5,976	2,888	1,776	1,326	263	384	211	227	63	174	106,601																	
LM	91,894	135,959	56,518	40,151	33,795	31,180	17,949	7,953	4,362	1,285	1,619	548	1,845	263	648	425,969																	
AA	168,552	13,648	11,071	8,343	10,001	34,279	4,140	2,886	4,245	1,503	350	1,437	302	845	537	262,139																	
BA	1,713	2,382	1,552	1,268	811	684	820	172	160	40	62	31	1,990	14	17	11,716																	
BB	34,865	15,331	7,842	6,520	4,412	5,492	7,674	1,351	1,718	362	342	215	671	154	280	87,229																	
JE	4,060	10	0	2	12	19	6	11	95	123	1	61	1	1,613	5	6,019																	
MO	7,760	91	65	204	95	66	45	35	6,158	120	0	183	2	64	179	15,067																	
RB	2,741	14	21	33	24	11	21	12	210	55	2	1,869	4	23	165	5,205																	
MY	651	32	5	17	19	14	12	26	29	8	0	17	1	2	940	1,773																	
SA	2,323	1,835	1,644	959	781	936	419	474	135	57	2,608	50	89	9	40	12,359																	
SH	3,406	1,762	1,360	979	1,189	1,581	507	7,982	180	178	102	31	44	62	70	19,433																	
Other*	4,605	1,360	1,032	696	574	691	464	235	460	4,021	164	129	152	96	81	14,760																	
Total	982,613	279,873	258,860	149,823	131,438	130,571	56,196	35,727	29,270	11,100	8,677	8,258	7,084	6,516	4,717	2,100,723																	

Cattle Imports 2007 by Country of Origin and Gender

Ch 1

	Male	Female	Total
UK	3,191	18,598	21,789
FRANCE	90	413	503
DENMARK	2	106	108
NETHERLANDS	23	87	110
ITALY	2	64	66
GERMANY	7	39	46
BELGIUM	25	0	25
NORWAY	0	2	2
CANADA	0	1	1
TOTAL	3,340	19,310	22,650

Of the cattle imported from UK, 19,610 went for immediate slaughter

Cattle Imports 2007 by Country of Origin and Breed

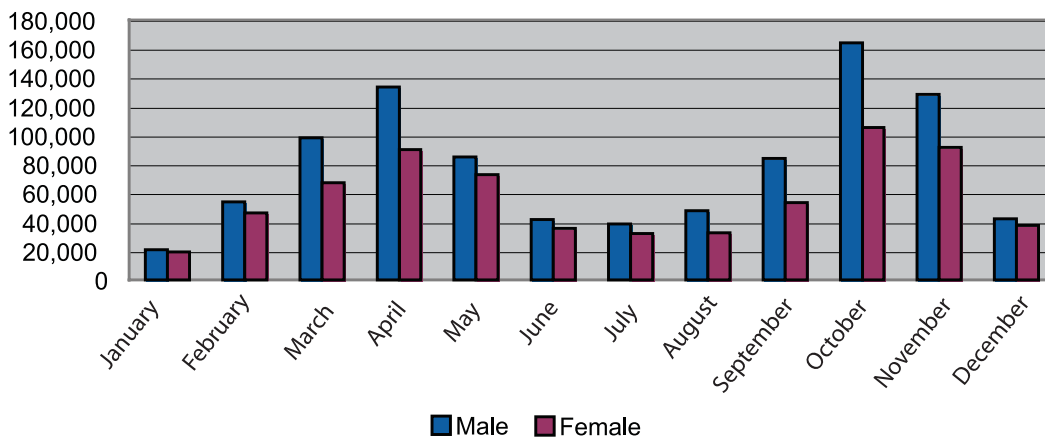
	UK	France	Denmark	Netherlands	Italy	Germany	Belgium	Norway	Canada	Total
FR	14,596	7	1	106	0	41	0	0	0	14,751
CH	1,571	125	0	0	0	0	0	0	0	1,696
HE	305	0	0	2	0	0	0	0	0	307
BB	665	8	0	0	0	0	25	0	0	698
BS	23	0	0	0	0	0	0	0	0	23
JE	132	0	107	0	0	0	0	0	1	240
PI	8	0	0	0	49	0	0	0	0	57
LM	1,949	93	0	0	0	0	0	0	0	2,042
SA	91	43	0	0	0	0	0	0	0	134
VO	0	40	0	0	0	0	0	0	0	40
AU	1	11	0	0	0	0	0	0	0	12
PT	1	124	0	0	0	0	0	0	0	125
MO	61	51	0	0	0	0	0	0	0	112
BA	307	1	0	0	0	0	0	0	0	308
AA	758	0	0	0	0	0	0	0	0	758
SI	542	0	0	0	0	1	0	0	0	543
SH	202	0	0	0	0	0	0	0	0	202
AY	274	0	0	0	0	0	0	0	0	274
Other*	303	0	0	2	17	4	0	2	0	328
Total	21,789	503	108	110	66	46	25	2	1	22,650

*FOR FULL LIST OF BREEDS SEE APPENDIX

CHAPTER 2 movement data



Mart Movements 2007* by Month and by Gender



* THESE FIGURES INCLUDE 129,583 MOVEMENTS
WHERE THE ANIMAL WAS UNSOLD IN THE MART

Age Breakdown of Mart Movements For Beef Cattle* by month and by gender

	0 - 6 weeks		6 wks - 6 mts		6 - 12 mts		12 - 18 mts		18 - 24 mts		24 - 30 mts		30 mts +		Total
	M	F	M	F	M	F	M	F	M	F	M	F	M	F	
Jan	1,216	976	694	567	6,543	5,463	1,098	723	5,293	3,530	537	370	1,049	3,654	31,713
Feb	4,379	3,757	768	719	15,652	13,224	3,522	2,320	11,893	8,384	1,849	1,244	2,093	7,698	77,502
Mar	12,430	10,490	866	779	19,837	15,913	10,295	6,165	17,425	9,438	7,289	3,418	2,433	7,737	124,515
Apr	15,442	12,710	1,670	1,478	22,165	16,443	27,670	18,296	19,053	8,918	16,518	7,139	2,966	9,147	179,615
May	13,252	11,267	2,592	2,326	11,797	8,981	21,713	16,854	7,720	5,148	11,821	6,724	2,047	10,842	133,084
Jun	6,363	5,702	1,962	1,801	4,440	3,552	12,057	9,196	2,607	1,769	6,228	3,854	1,077	5,688	66,296
Jul	3,456	2,999	2,139	2,004	3,845	2,974	13,220	10,908	2,083	1,607	6,937	3,829	926	4,760	61,687
Aug	1,313	1,019	3,178	2,423	7,638	4,823	16,359	11,411	3,896	2,559	7,639	3,542	1,485	4,675	71,960
Sep	946	848	7,716	5,386	17,426	11,022	21,980	14,903	12,655	7,299	10,142	4,217	3,459	6,967	124,966
Oct	1,179	1,043	15,327	10,673	52,244	34,483	27,547	17,437	34,419	20,139	10,743	4,795	7,276	12,535	249,840
Nov	1,173	1,007	9,150	6,693	40,155	30,131	15,156	9,583	34,603	21,215	6,902	3,113	8,737	13,828	201,446
Dec	829	737	2,614	1,934	12,800	10,067	4,148	2,671	11,589	8,428	1,891	1,166	3,519	8,314	70,707
Total	61,978	52,555	48,676	36,783	214,542	157,076	174,765	120,467	163,236	98,434	88,496	43,411	37,067	95,845	1,393,331

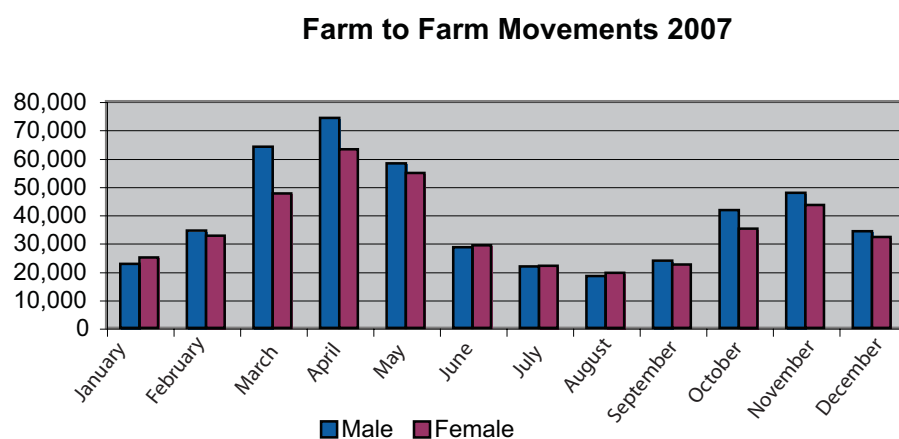
* FOR THE PURPOSE OF THIS TABLE BEEF CATTLE ARE DEFINED AS THE PROGENY OF BULLS OF A BEEF BREED.

SECTION I

Age Breakdown of Mart Movements For Dairy Cattle* by month and by gender

	0 - 6 weeks		6 wks - 6 mts		6 - 12 mts		12 - 18 mts		18 - 24 mts		24 - 30 mts		30 mts +		Total
	M	F	M	F	M	F	M	F	M	F	M	F	M	F	
Jan	1,599	63	317	15	588	115	134	10	1,363	540	140	142	225	3,177	8,428
Feb	9,204	281	311	26	1,098	165	624	62	1,785	1,000	780	674	312	6,835	23,157
Mar	18,388	859	565	69	1,009	161	3,182	213	1,794	664	2,785	1,804	303	9,521	41,317
Apr	10,718	1,045	1,348	297	1,093	197	7,486	839	1,805	526	4,988	2,582	451	10,589	43,964
May	4,636	761	1,155	218	546	140	4,209	818	663	277	2,820	1,549	366	7,258	25,416
Jun	1,739	416	681	140	290	57	2,458	287	400	66	1,522	379	220	2,674	11,329
Jul	956	199	526	73	232	35	2,485	235	407	72	1,368	312	229	2,021	9,150
Aug	320	43	274	48	279	14	2,274	163	1,700	67	1,142	218	497	1,570	8,609
Sep	403	61	242	55	565	51	1,759	147	4,735	132	924	161	943	2,062	12,240
Oct	1,117	26	322	74	1,713	158	1,535	155	8,749	397	733	171	1,451	3,337	19,938
Nov	1,171	45	276	62	1,720	172	912	128	6,869	603	667	114	1,254	4,966	18,959
Dec	893	24	162	25	846	124	331	43	2,036	442	241	81	555	3,649	9,452
Total	51,144	3,823	6,179	1,102	9,979	1,389	27,389	3,100	32,306	4,786	18,110	8,187	6,806	57,659	231,959
* FOR THE PURPOSE OF THIS TABLE DAIRY CATTLE ARE DEFINED AS THE PROGENY OF BULLS OF A DAIRY BREED.															

Farm to Farm Movements 2007 by Month and by Gender



	Male	Female	Total
JANUARY	22,555	24,809	47,364
FEBRUARY	34,239	32,599	66,838
MARCH	64,013	47,421	111,434
APRIL	74,188	63,131	137,319
MAY	58,063	54,798	112,861
JUNE	28,498	29,085	57,583
JULY	21,644	21,949	43,593
AUGUST	18,270	19,467	37,737
SEPTEMBER	23,785	22,411	46,196
OCTOBER	41,556	34,983	76,539
NOVEMBER	47,677	43,341	91,018
DECEMBER	34,013	32,100	66,113
TOTAL	468,501	426,094	894,595

SECTION 2

Age Breakdown of Farm to Farm Movements For Beef Cattle* by month and by gender

	0 - 6 weeks		6 wks - 6 mts		6 - 12 mts		12 - 18 mts		18 - 24 mts		24 - 30 mts		30 mts +		Total
	M	F	M	F	M	F	M	F	M	F	M	F	M	F	
Jan	1,372	1,259	945	873	6,486	5,550	12,118	826	4,246	2,985	430	472	1,065	4,770	32,497
Feb	4,481	4,147	816	662	7,491	6,340	17,754	1,069	3,724	2,736	628	602	916	4,627	39,993
Mar	12,098	10,602	1,059	1,003	8,645	6,674	4,616	2,642	4,190	3,091	1,797	1,366	1,155	5,357	64,295
Apr	13,489	12,480	2,237	1,837	9,429	6,522	12,144	7,877	5,676	3,132	5,125	3,197	1,939	6,695	91,779
May	11,283	10,887	3,545	3,409	5,777	3,989	12,067	8,063	3,321	2,017	4,781	3,362	1,915	7,065	81,481
Jun	4,634	4,828	3,168	2,987	2,532	1,995	6,365	4,930	1,100	835	2,269	2,027	935	4,379	42,984
Jul	2,478	2,244	3,019	2,896	1,906	1,326	5,644	4,706	902	534	1,623	1,489	749	3,236	32,752
Aug	923	846	2,682	2,395	2,252	1,764	5,191	4,328	943	844	1,541	1,352	757	2,762	28,580
Sep	841	715	3,475	2,796	4,207	3,107	5,467	3,673	2,475	1,687	1,461	1,190	858	3,420	35,372
Oct	1,086	1,022	4,879	3,579	11,786	8,136	5,896	3,672	6,353	4,380	1,416	1,236	1,471	5,394	60,306
Nov	1,320	1,206	4,026	3,028	15,352	11,017	4,221	2,681	8,512	6,342	1,391	1,133	2,450	7,293	69,972
Dec	1,018	863	1,920	1,499	10,405	8,008	2,564	1,361	7,288	4,543	906	681	1,818	5,828	48,702
Total	55,023	51,099	31,771	26,964	86,268	64,428	67,147	45,828	48,730	33,126	23,368	18,107	16,028	60,826	628,713

* FOR THE PURPOSE OF THIS TABLE BEEF CATTLE ARE DEFINED AS THE PROGENY OF BULLS OF A BEEF BREED.

Age Breakdown of Farm to Farm Movements For Dairy Cattle* by month and by gender

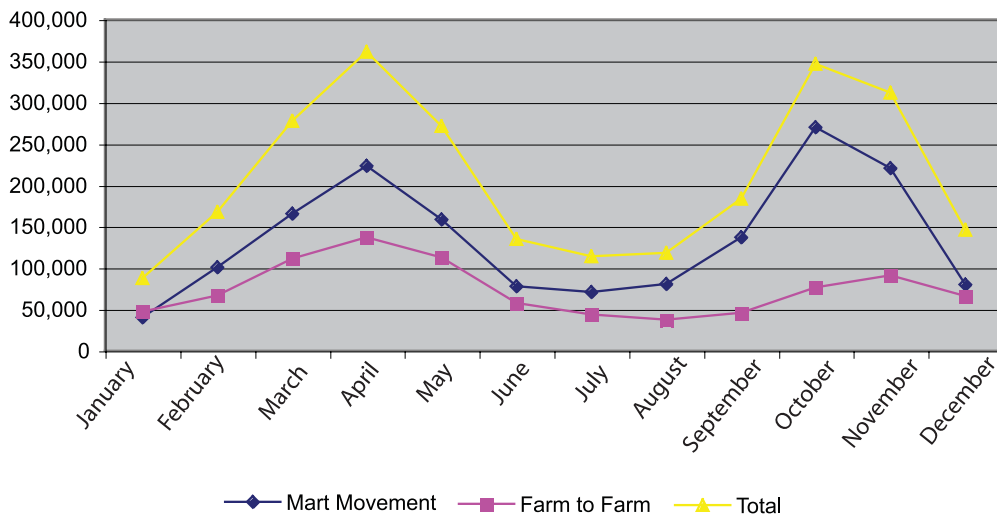
	0 - 6 weeks		6 wks - 6 mts		6 - 12 mts		12 - 18 mts		18 - 24 mts		24 - 30 mts		30 mts +		Total
	M	F	M	F	M	F	M	F	M	F	M	F	M	F	
Jan	2,140	198	692	198	1,366	901	476	202	1,608	1,278	209	352	302	4,945	14,867
Feb	10,946	994	798	213	965	638	533	409	659	1,438	366	1,537	162	7,187	26,845
Mar	23,080	2,717	1,470	617	1,023	564	2,409	981	977	846	1,284	2,290	210	8,671	47,139
Apr	12,121	2,325	2,869	1,045	1,135	560	4,438	2,111	945	854	2,332	3,257	309	11,239	45,540
May	5,852	1,531	2,755	1,207	675	348	3,470	2,272	464	561	1,759	2,058	399	8,029	31,380
Jun	1,810	602	2,178	803	444	102	1,618	796	279	186	935	763	231	3,852	14,599
Jul	780	228	1,652	849	509	230	1,295	752	296	214	606	570	185	2,675	10,841
Aug	315	107	892	605	637	348	1,022	477	510	305	373	638	232	2,696	9,157
Sep	1,165	119	543	330	1,089	545	563	372	1,004	806	246	530	391	3,121	10,824
Oct	2,439	202	424	206	1,968	910	613	320	2,366	1,323	231	466	628	4,137	16,233
Nov	2,812	153	610	180	2,745	1,258	582	290	2,710	2,111	275	559	671	6,090	21,046
Dec	1,776	151	438	144	1,832	1,119	473	170	2,713	1,913	282	361	580	5,459	17,411
Total	65,236	9,327	15,321	6,397	14,388	7,523	17,492	9,152	14,531	11,835	8,898	13,381	4,300	68,101	265,882

* FOR THE PURPOSE OF THIS TABLE DAIRY CATTLE ARE DEFINED AS THE PROGENY OF BULLS OF A DAIRY BREED.

Ch 2

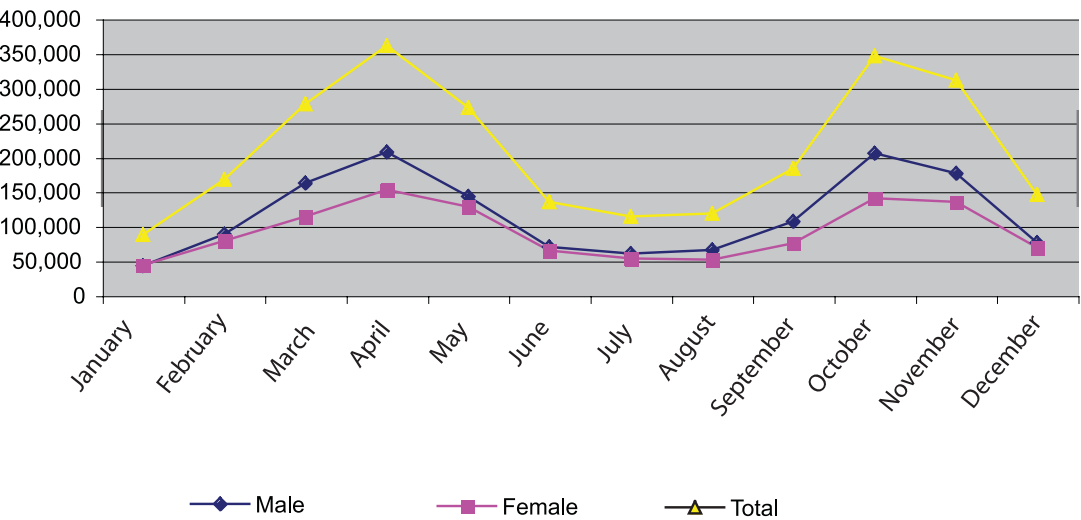
SECTION 3

All Cattle Movements by Month and by Type



	Mart Movements	Farm to Farm	Total
JANUARY	40,141	47,364	87,505
FEBRUARY	100,659	66,838	167,497
MARCH	165,832	111,434	277,266
APRIL	223,579	137,319	360,898
MAY	158,500	112,861	271,361
JUNE	77,625	57,583	135,208
JULY	70,837	43,593	114,430
AUGUST	80,569	37,737	118,306
SEPTEMBER	137,206	46,196	183,402
OCTOBER	269,778	76,539	346,317
NOVEMBER	220,405	91,018	311,423
DECEMBER	80,159	66,113	146,272
TOTAL	1,625,290	894,595	2,519,885

All Cattle Movements by Month and by Gender



	Male	Female	Total
JANUARY	43,351	44,154	87,505
FEBRUARY	88,509	78,988	167,497
MARCH	162,614	114,652	277,266
APRIL	207,561	153,337	360,898
MAY	143,400	127,961	271,361
JUNE	70,542	64,666	135,208
JULY	60,453	53,977	114,430
AUGUST	66,264	52,042	118,306
SEPTEMBER	107,680	75,722	183,402
OCTOBER	205,911	140,406	346,317
NOVEMBER	176,422	135,001	311,423
DECEMBER	76,467	69,805	146,272
TOTAL	1,409,174	1,110,711	2,519,885

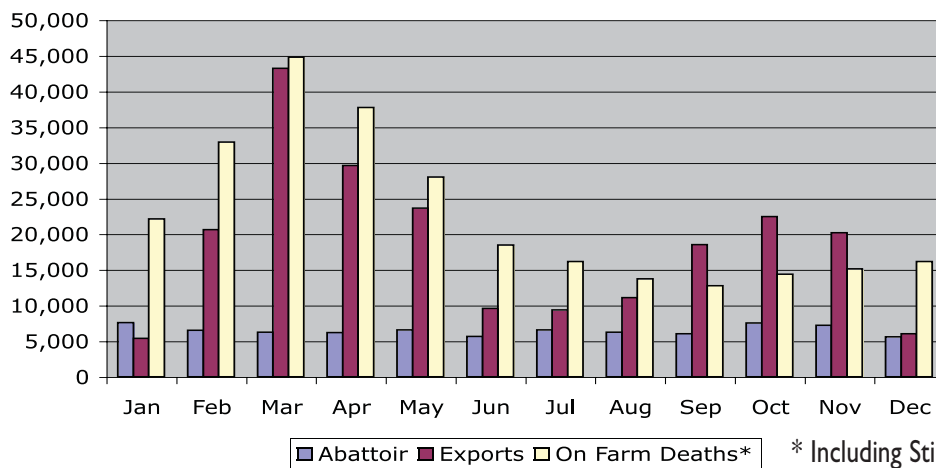
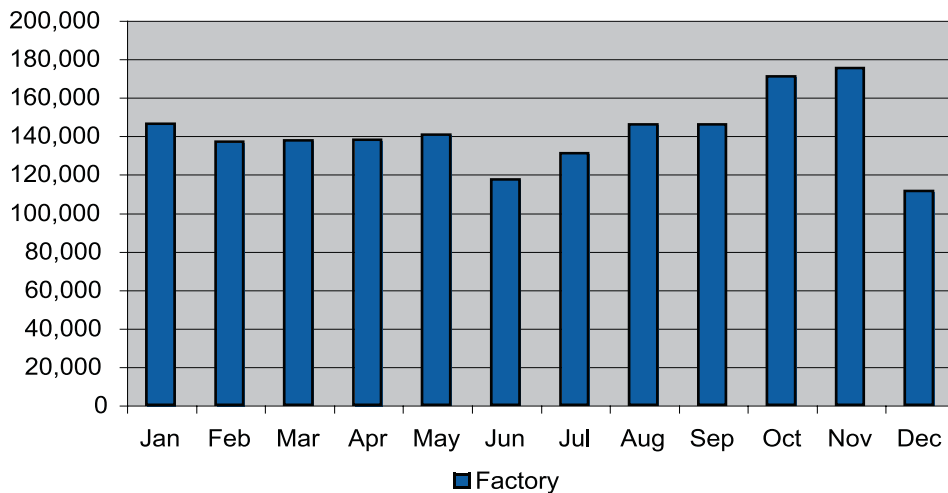
CHAPTER 3 disposal of cattle



Ch 3

SECTION I

Overall Summary of Cattle Disposals and On Farm Deaths

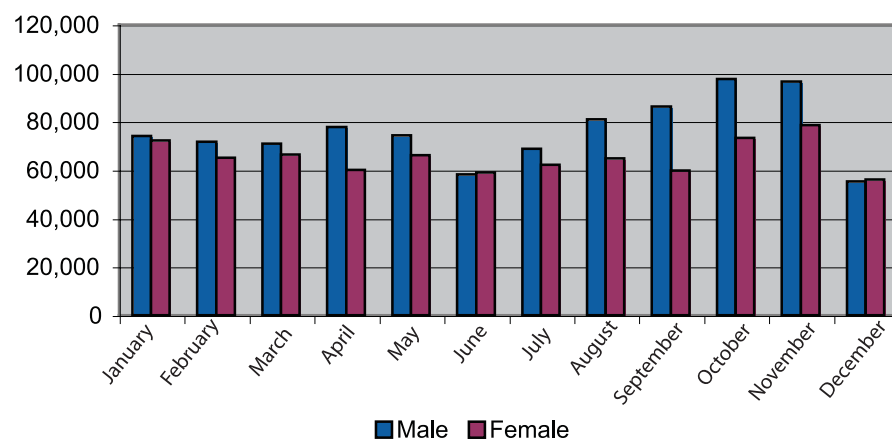


* Including Stillborn Animals

	Factory	Exports	Abattoir	On Farm Deaths **	Stillborn	Total
JANUARY	146,020	5,374	7,612	19,238	2,896	181,140
FEBRUARY	136,847	20,615	6,503	26,525	6,382	196,872
MARCH	137,275	43,231	6,256	37,932	6,853	231,547
APRIL	137,676	29,608	6,177	33,175	4,537	211,173
MAY	140,332	23,622	6,545	25,652	2,325	198,476
JUNE	117,042	9,600	5,656	17,358	1,102	150,758
JULY	130,637	9,388	6,577	15,531	614	162,747
AUGUST	145,713	11,086	6,241	13,149	549	176,738
SEPTEMBER	145,875	18,539	6,041	12,004	762	183,221
OCTOBER	170,861	22,469	7,557	13,508	849	215,244
NOVEMBER	174,984	20,200	7,207	14,245	862	217,498
DECEMBER	111,226	6,025	5,586	15,222	947	139,006
TOTAL	1,694,488	219,757	77,958	243,539	28,678	2,264,420

** EXCLUDING STILLBORN ANIMALS

Cattle Disposals in Factories 2007 by Month and by Gender



	Male	Female	Total
JANUARY	73,907	72,113	146,020
FEBRUARY	71,715	65,132	136,847
MARCH	70,803	66,472	137,275
APRIL	77,714	59,962	137,676
MAY	74,336	65,996	140,332
JUNE	58,207	58,835	117,042
JULY	68,603	62,034	130,637
AUGUST	80,840	64,873	145,713
SEPTEMBER	86,087	59,788	145,875
OCTOBER	97,538	73,323	170,861
NOVEMBER	96,402	78,582	174,984
DECEMBER	55,130	56,096	111,226
TOTAL	911,282	783,206	1,694,488

Ch 3

SECTION 2

Age Profile of Factory Slaughterings 2007 for Beef Cattle * by month and by gender

Month	0 - 12 mts		12 - 18 mts		18 - 24 mts		24 - 30 mts		30 mts +		Total
	M	F	M	F	M	F	M	F	M	F	
JANUARY	292	274	1,590	1,273	20,874	27,862	6,711	4,563	25,634	21,306	110,379
FEBRUARY	270	193	1,265	1,015	21,969	22,577	9,145	5,988	19,903	16,659	98,984
MARCH	377	277	1,925	1,108	19,391	18,187	15,862	11,274	15,144	14,479	98,024
APRIL	383	192	3,327	1,358	13,587	11,713	25,577	15,618	14,470	12,069	98,294
MAY	374	229	7,470	2,558	9,101	7,393	27,111	19,474	12,933	14,320	100,963
JUNE	258	157	7,969	2,187	4,709	3,666	21,779	16,044	10,951	15,855	83,575
JULY	252	131	5,343	2,491	3,419	3,083	32,496	18,763	13,962	17,006	96,946
AUGUST	210	236	4,352	3,392	3,985	4,057	41,189	18,621	15,826	18,956	110,824
SEPTEMBER	214	187	3,131	3,323	4,838	5,751	38,269	14,761	24,020	19,987	114,481
OCTOBER	268	430	2,519	3,529	7,743	11,663	33,351	12,717	36,296	27,614	136,130
NOVEMBER	249	327	2,007	2,305	12,139	17,787	19,956	8,184	44,246	31,797	138,997
DECEMBER	187	190	1,340	1,371	11,927	17,296	7,234	4,341	24,450	20,611	88,947
TOTAL	3,334	2,823	42,238	25,910	133,682	151,035	278,680	150,348	257,835	230,659	1,276,544

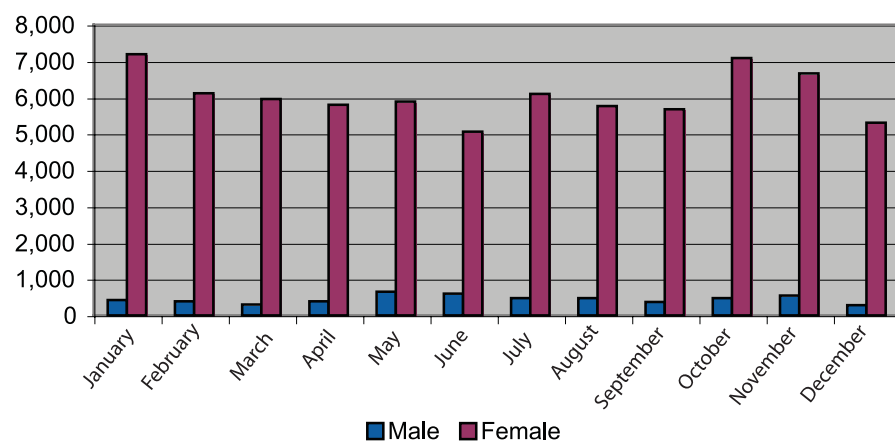
* FOR THE PURPOSE OF THIS TABLE BEEF CATTLE ARE DEFINED AS THE PROGENY OF BULLS OF A BEEF BREED

Age Profile of Factory Slaughterings 2007 for Dairy Cattle ** by month and by gender

Month	0 - 12 mts		12 - 18 mts		18 - 24 mts		24 - 30 mts		30 mts +		Total
	M	F	M	F	M	F	M	F	M	F	
JANUARY	51	20	146	23	8,446	826	3,288	321	6,875	15,645	35,641
FEBRUARY	21	23	164	30	6,978	725	7,189	658	4,811	17,264	37,863
MARCH	19	14	300	43	3,481	422	10,927	1,047	3,377	19,621	39,251
APRIL	20	7	394	109	2,042	274	14,870	1,326	3,044	17,296	39,382
MAY	99	24	861	72	1,400	151	12,125	1,388	2,862	20,387	39,369
JUNE	10	6	934	84	1,056	97	8,040	1,320	2,501	19,419	33,467
JULY	57	6	582	91	560	98	8,905	1,542	3,027	18,823	33,691
AUGUST	110	11	395	84	901	144	8,448	1,197	5,424	18,175	34,889
SEPTEMBER	134	18	236	48	1,406	158	5,049	605	8,790	14,950	31,394
OCTOBER	106	5	176	43	2,320	278	3,538	485	11,221	16,559	34,731
NOVEMBER	185	33	148	43	3,101	448	2,269	326	12,102	17,332	35,987
DECEMBER	37	22	114	20	2,528	405	1,245	164	6,068	11,676	22,279
TOTAL	849	189	4,450	690	34,219	4,026	85,893	10,379	70,102	207,147	417,944

** FOR THE PURPOSE OF THIS TABLE DAIRY CATTLE ARE DEFINED AS THE PROGENY OF BULLS OF A DAIRY BREED

Cattle Disposals in Local Authority Licensed Abattoirs 2007 by Month and by Gender



	Male	Female	Total
JANUARY	423	7,189	7,612
FEBRUARY	386	6,117	6,503
MARCH	302	5,954	6,256
APRIL	388	5,789	6,177
MAY	651	5,894	6,545
JUNE	598	5,058	5,656
JULY	473	6,104	6,577
AUGUST	482	5,759	6,241
SEPTEMBER	371	5,670	6,041
OCTOBER	471	7,086	7,557
NOVEMBER	544	6,663	7,207
DECEMBER	281	5,305	5,586
TOTAL	5,370	72,588	77,958

Ch 3

SECTION 3

Age Profile of Abattoir Slaughterings 2007 for Beef Cattle* by month and by gender

Month	0 - 6 mts		6 - 12 mts		12 - 18 mts		18 - 24 mts		24 mts +		Total
	M	F	M	F	M	F	M	F	M	F	
JANUARY	2	2	44	290	30	480	274	5,786	54	486	7,448
FEBRUARY	1	2	29	313	42	448	218	4,593	55	646	6,347
MARCH	0	0	41	330	54	676	140	3,564	49	1,244	6,098
APRIL	1	4	44	209	111	1,081	114	2,448	86	1,907	6,005
MAY	4	6	52	210	267	1,827	114	1,535	176	2,176	6,367
JUNE	4	0	21	171	317	1,947	72	895	148	1,963	5,538
JULY	2	12	20	195	206	2,428	45	966	156	2,393	6,423
AUGUST	7	19	46	364	137	2,326	61	1,098	188	1,839	6,085
SEPTEMBER	5	26	28	350	115	1,912	60	1,871	138	1,437	5,942
OCTOBER	8	31	36	622	118	1,628	134	3,495	148	1,220	7,440
NOVEMBER	5	11	40	445	103	965	236	4,426	103	730	7,064
DECEMBER	2	7	20	245	42	536	122	4,085	57	376	5,492
TOTAL	41	120	421	3,744	1,542	16,254	1,590	34,762	1,358	16,417	76,249

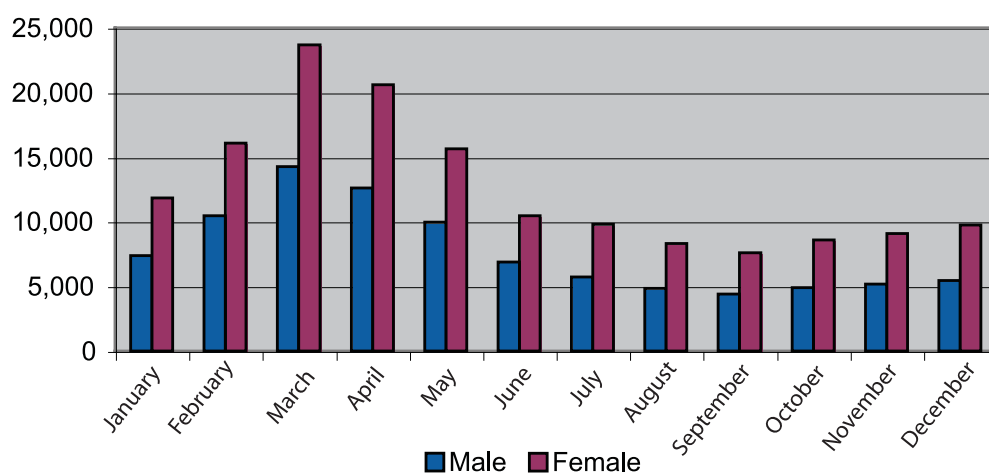
* FOR THE PURPOSE OF THIS TABLE BEEF CATTLE ARE DEFINED AS THE PROGENY OF BULLS OF A BEEF BREED

Age Profile of Abattoir Slaughterings 2007 for Dairy Cattle ** by month and by gender

Month	0 - 6 mts		6 - 12 mts		12 - 18 mts		18 - 24 mts		24 mts +		Total
	M	F	M	F	M	F	M	F	M	F	
JANUARY	0	0	1	6	3	6	7	116	8	17	164
FEBRUARY	0	0	2	3	5	11	20	85	14	16	156
MARCH	0	0	2	6	4	7	5	62	7	65	158
APRIL	0	0	3	1	10	12	9	54	10	73	172
MAY	0	0	5	2	14	19	5	29	14	90	178
JUNE	0	0	1	0	13	15	13	17	9	50	118
JULY	0	0	1	2	22	33	7	17	14	58	154
AUGUST	0	1	8	2	22	26	5	17	8	67	156
SEPTEMBER	0	1	2	3	2	22	6	20	15	28	99
OCTOBER	1	0	2	0	4	15	9	52	11	23	117
NOVEMBER	0	0	5	1	12	11	31	60	9	14	143
DECEMBER	0	0	0	2	5	4	27	42	6	8	94
TOTAL	1	2	32	28	116	181	144	571	125	509	1,709

** FOR THE PURPOSE OF THIS TABLE DAIRY CATTLE ARE DEFINED AS THE PROGENY OF BULLS OF A DAIRY BREED

On Farm Deaths 2007* by Month and by Gender



	Male	Female	Total
JANUARY	7,380	11,858	19,238
FEBRUARY	10,459	16,066	26,525
MARCH	14,264	23,668	37,932
APRIL	12,588	20,587	33,175
MAY	9,987	15,665	25,652
JUNE	6,882	10,476	17,358
JULY	5,734	9,797	15,531
AUGUST	4,843	8,306	13,149
SEPTEMBER	4,421	7,583	12,004
OCTOBER	4,908	8,600	13,508
NOVEMBER	5,184	9,061	14,245
DECEMBER	5,456	9,766	15,222
TOTAL	92,106	151,433	243,539

* Excludes stillborn animals

Ch 3

SECTION 4

Age Profile of On Farm Deaths 2007 for Male Beef cattle* by month

Month	0 - 6 weeks	6 wks - 6 mts	6 - 12 mts	12 - 18 mts	18 - 24 mts	24 - 30 mts	30 mts+	Total
JANUARY	1,458	597	1,389	227	521	78	317	4,587
FEBRUARY	3,586	458	986	175	393	84	252	5,934
MARCH	6,223	673	983	350	378	134	268	9,009
APRIL	5,789	1,094	674	508	251	211	245	8,772
MAY	3,675	2,117	398	653	183	250	215	7,491
JUNE	1,805	2,215	277	570	96	226	156	5,345
JULY	992	2,126	263	525	99	189	194	4,388
AUGUST	667	1,635	298	519	132	186	185	3,622
SEPTEMBER	606	1,172	499	435	164	143	173	3,192
OCTOBER	720	920	930	387	259	86	200	3,502
NOVEMBER	692	744	1,362	237	361	78	230	3,704
DECEMBER	745	733	1,491	232	425	71	267	3,964
TOTAL	26,958	14,484	9,550	4,818	3,262	1,736	2,702	63,510

Age Profile of On Farm Deaths 2007 for Female Beef cattle* by month

Month	0 - 6 weeks	6 wks - 6 mts	6 - 12 mts	12 - 18 mts	18 - 24 mts	24 - 30 mts	30 mts+	Total
JANUARY	1,172	488	1,065	140	398	103	2,743	6,109
FEBRUARY	2,783	336	750	128	342	88	2,950	7,377
MARCH	4,864	553	732	271	394	222	4,878	11,914
APRIL	4,635	949	447	414	372	353	4,433	11,603
MAY	2,886	1,765	315	551	262	407	3,212	9,398
JUNE	1,322	1,878	202	443	145	305	2,181	6,476
JULY	806	1,783	187	473	98	300	2,415	6,062
AUGUST	464	1,348	236	445	126	303	2,116	5,038
SEPTEMBER	425	1,059	449	378	171	247	1,850	4,579
OCTOBER	487	818	757	287	304	189	2,515	5,357
NOVEMBER	469	588	1,101	222	342	113	2,783	5,618
DECEMBER	558	588	1,130	160	373	96	2,894	5,799
TOTAL	20,871	12,153	7,371	3,912	3,327	2,726	34,970	85,330

* FOR THE PURPOSE OF THESE TABLES BEEF CATTLE ARE DEFINED AS THE PROGENY OF BULLS OF A BEEF BREED

Age Profile of On Farm Deaths 2007 for Male Dairy cattle* by month

Month	0 - 6 weeks	6 wks - 6 mts	6 - 12 mts	12 - 18 mts	18 - 24 mts	24 - 30 mts	30 mts+	Total
JANUARY	1,709	310	383	75	190	33	93	2,793
FEBRUARY	3,668	272	231	103	121	67	63	4,525
MARCH	3,997	549	191	178	104	139	97	5,255
APRIL	2,270	918	146	209	59	140	74	3,816
MAY	974	1,032	106	174	43	110	57	2,496
JUNE	391	823	73	133	24	62	31	1,537
JULY	228	757	110	97	29	76	49	1,346
AUGUST	193	565	237	87	44	45	50	1,221
SEPTEMBER	428	295	272	68	77	27	62	1,229
OCTOBER	548	222	397	63	105	16	55	1,406
NOVEMBER	559	210	476	53	102	15	65	1,480
DECEMBER	574	214	425	61	136	18	64	1,492
TOTAL	15,539	6,167	3,047	1,301	1,034	748	760	28,596

Age Profile of On Farm Deaths 2007 for Female Dairy cattle* by month

Month	0 - 6 weeks	6 wks - 6 mts	6 - 12 mts	12 - 18 mts	18 - 24 mts	24 - 30 mts	30 mts+	Total
JANUARY	1,301	180	345	67	287	95	3,474	5,749
FEBRUARY	2,754	191	200	96	235	307	4,906	8,689
MARCH	2,935	382	178	192	252	679	7,136	11,754
APRIL	1,627	745	113	191	148	482	5,678	8,984
MAY	794	982	62	172	64	356	3,837	6,267
JUNE	310	861	63	122	40	231	2,373	4,000
JULY	187	850	80	126	39	210	2,243	3,735
AUGUST	160	612	170	111	61	142	2,012	3,268
SEPTEMBER	264	312	294	52	97	68	1,917	3,004
OCTOBER	380	197	428	43	127	57	2,011	3,243
NOVEMBER	331	208	389	45	145	63	2,262	3,443
DECEMBER	416	162	391	61	181	67	2,689	3,967
TOTAL	11,459	5,682	2,713	1,278	1,676	2,757	40,538	66,103

* FOR THE PURPOSE OF THESE TABLES DAIRY CATTLE ARE DEFINED AS THE PROGENY OF BULLS OF A DAIRY BREED

Ch 3

SECTION 5

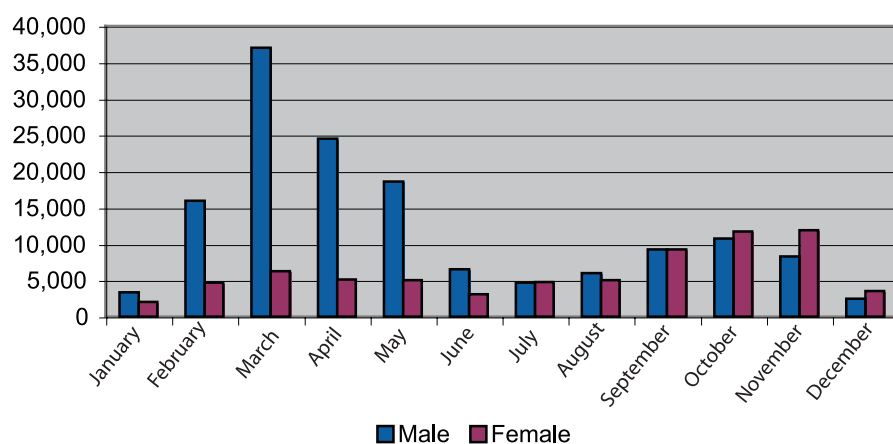
Stillborn Calves 2007 by month and by gender

	Male	Female	Total
JANUARY	1,614	1,282	2,896
FEBRUARY	3,647	2,735	6,382
MARCH	3,968	2,885	6,853
APRIL	2,668	1,869	4,537
MAY	1,376	949	2,325
JUNE	662	440	1,102
JULY	372	242	614
AUGUST	315	234	549
SEPTEMBER	461	301	762
OCTOBER	501	348	849
NOVEMBER	543	319	862
DECEMBER	547	400	947
TOTAL	16,674	12,004	28,678

Stillborn Calves 2007 by month, gender and sire type

	Calves born to a Beef Bull			Calves born to a Dairy Bull			Total
	Male	Female	Total	Male	Female	Total	
JANUARY	731	577	1,308	883	705	1,588	2,896
FEBRUARY	1,963	1,422	3,385	1,684	1,313	2,997	6,382
MARCH	2,710	1,963	4,673	1,258	922	2,180	6,853
APRIL	2,086	1,488	3,574	582	381	963	4,537
MAY	1,132	786	1,918	244	163	407	2,325
JUNE	586	371	957	76	69	145	1,102
JULY	319	202	521	53	40	93	614
AUGUST	245	174	419	70	60	130	549
SEPTEMBER	303	187	490	158	114	272	762
OCTOBER	308	210	518	193	138	331	849
NOVEMBER	368	207	575	175	112	287	862
DECEMBER	329	218	547	218	182	400	947
TOTAL	11,080	7,805	18,885	5,594	4,199	9,793	28,678

Live Exports 2007 by month and by gender



	Male	Female	Total
JANUARY	3,320	2,054	5,374
FEBRUARY	15,920	4,695	20,615
MARCH	36,984	6,247	43,231
APRIL	24,518	5,090	29,608
MAY	18,607	5,015	23,622
JUNE	6,535	3,065	9,600
JULY	4,661	4,727	9,388
AUGUST	6,029	5,057	11,086
SEPTEMBER	9,285	9,254	18,539
OCTOBER	10,737	11,732	22,469
NOVEMBER	8,296	11,904	20,200
DECEMBER	2,497	3,528	6,025
TOTAL	147,389	72,368	219,757

SECTION 6

Age profile of Live Exports 2007 for Beef Cattle* by month and gender

	0 - 6 weeks		6 wks - 6 mts		6 - 12 mts		12 - 18 mts		18 - 24 mts		24 - 30 mts		30 mts +		Total
	M	F	M	F	M	F	M	F	M	F	M	F	M	F	
Jan	2	1	32	35	1,395	1,399	320	164	281	132	44	17	153	88	4,063
Feb	138	35	73	71	3,640	3,393	586	455	936	505	154	48	157	68	10,259
Mar	1,316	607	99	68	3,074	3,476	886	1,012	843	615	410	141	160	84	12,791
Apr	2,376	778	206	108	1,665	1,613	1,552	1,455	691	465	759	327	115	58	12,168
May	3,688	970	415	169	1,069	911	1,351	1,677	334	333	1,024	483	148	106	12,678
Jun	1,935	566	355	121	441	544	649	1,234	74	81	117	167	2	28	6,314
Jul	678	357	291	161	637	1,193	849	2,162	60	142	447	377	21	61	7,436
Aug	191	50	295	249	2,121	1,855	1,487	2,134	236	152	914	263	58	31	10,036
Sep	47	8	504	1,175	4,186	4,820	1,669	1,840	723	438	784	248	66	68	16,576
Oct	28	9	305	979	4,516	7,342	1,362	1,333	1,643	898	425	198	23	128	19,189
Nov	26	20	146	595	3,332	7,695	718	891	1,334	1,336	279	162	50	254	16,838
Dec	11	16	27	105	725	2,301	170	219	305	396	54	37	19	216	4,601
Total	10,436	3,417	2,748	3,836	26,801	36,542	11,599	14,576	7,460	5,493	5,411	2,468	972	1,190	132,949

*FOR THE PURPOSE OF THIS TABLE BEEF CATTLE ARE DEFINED AS THE PROGENY OF BULLS OF A BEEF BREED.

Age profile of Live Exports 2007 for Dairy Cattle* by month and gender

	0 - 6 weeks		6 wks - 6 mts		6 - 12 mts		12 - 18 mts		18 - 24 mts		24 - 30 mts		30 mts +		Total
	M	F	M	F	M	F	M	F	M	F	M	F	M	F	
Jan	715	3	337	19	3	10	4	10	15	53	8	27	11	96	1,311
Feb	9,711	12	359	1	15	11	5	3	40	17	75	41	31	35	10,356
Mar	28,793	62	1,184	22	10	6	23	8	57	40	115	57	14	49	30,440
Apr	14,664	28	2,179	22	2	12	14	18	5	14	275	61	15	131	17,440
May	8,212	69	1,932	48	36	3	25	26	23	8	340	56	10	156	10,944
Jun	2,151	135	741	48	9	3	5	38	6	8	50	46	0	46	3,286
Jul	945	159	541	56	4	5	5	26	14	7	160	13	9	8	1,952
Aug	271	34	215	21	5	4	15	45	19	66	166	69	36	84	1,050
Sep	864	11	159	15	33	27	21	62	91	108	86	139	52	295	1,963
Oct	2,209	5	102	11	8	15	4	50	63	154	49	82	0	528	3,280
Nov	2,081	7	190	4	19	36	11	29	43	268	61	105	6	502	3,362
Dec	1,033	2	92	1	2	3	0	6	23	63	31	28	5	135	1,424
Total	71,649	527	8,031	268	146	135	132	321	399	806	1,416	724	189	2,065	86,808

* FOR THE PURPOSE OF THIS TABLE DAIRY CATTLE ARE DEFINED AS THE PROGENY OF BULLS OF A DAIRY BREED.

Destination of Live Exports

Ch 3

SECTION 6

Destination	Male	Female	Total
Spain	31,902	33,622	65,524
Italy	27,263	21,802	49,065
Netherlands	46,036	1,245	47,281
Northern Ireland	22,632	12,838	35,470
France	11,140	303	11,443
Belgium	7,320	160	7,480
United Kingdom*	362	1,300	1,662
Greece	595	84	679
Hungary	128	132	260
Poland	11	127	138
Lithuania	0	88	88
Total EU	147,389	71,701	219,090
Rwanda	0	248	248
Israel	0	179	179
Albania	0	124	124
Kosovo	0	116	116
Total Non-EU	0	667	667
Total	147,389	72,368	219,757

* EXCLUDING NORTHERN IRELAND

Age Profile of Live Exports 2007 by Breed

	0 - 6 wks	6 wks - 6 mts	6 - 12 mts	12 - 18 mts	18 - 24 mts	24 - 30 mts	30 mts +	Total
FR	70,909	8,124	204	368	1,072	1,988	2,120	84,785
CH	220	2,498	28,516	10,624	6,157	2,535	648	51,198
LM	1,142	1,381	20,749	9,650	3,844	2,346	751	39,863
BB	5,457	1,394	8,770	3,300	1,047	534	196	20,698
SI	343	212	2,206	968	635	534	183	5,081
AA	4,747	674	1,135	663	565	816	146	8,746
Other*	1,622	391	1,587	789	353	330	198	5,270
HE	1,589	209	457	266	485	936	174	4,116
TOTAL	86,029	14,883	63,624	26,628	14,158	10,019	4,416	219,757

FR: Friesian CH: Charolais

LM: Limousin

BB: Belgian Blue

SI: Simmental

AA: Aberdeen Angus

HE: Hereford

* For full list of breeds see appendix

Destination of Live Exports by Age

	0 - 6 wks	6 wks - 6 mts	6 - 12 mts	12 - 18 mts	18 - 24 mts	24 - 30 mts	30 mts +	Total
Spain	22,052	9,265	28,262	5,617	291	27	10	65,524
Italy	752	1,447	29,797	13,939	2,804	233	93	49,065
Netherlands	44,729	2,549	3	0	0	0	0	47,281
Northern Ireland	862	597	4,401	6,409	10,172	9,219	3,810	35,470
France	10,478	523	342	55	6	6	33	11,443
Belgium	7,006	463	0	0	4	1	6	7,480
United Kingdom*	148	11	109	260	510	322	302	1,662
Greece	0	12	455	186	22	4	0	679
Hungary	0	9	143	48	54	3	3	260
Poland	2	5	4	7	42	35	43	138
Lithuania	0	0	0	22	14	32	20	88
Total EU	86,029	14,881	63,516	26,543	13,919	9,882	4,320	219,090
Rwanda	0	0	0	5	122	43	78	248
Israel	0	2	108	55	14	0	0	179
Albania	0	0	0	22	42	60	0	124
Kosovo	0	0	0	3	61	34	18	116
Total Non-EU	0	2	108	85	239	137	96	667
TOTAL	86,029	14,883	63,624	26,628	14,158	10,019	4,416	219,757

* EXCLUDING NORTHERN IRELAND

CHAPTER 4 national herd data

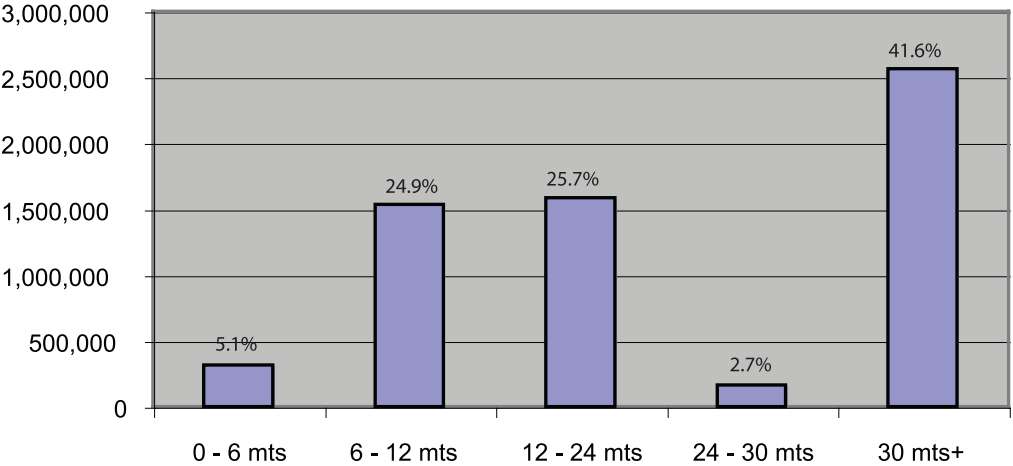


Age Profile of Live Herd at 31/12/2007 by gender

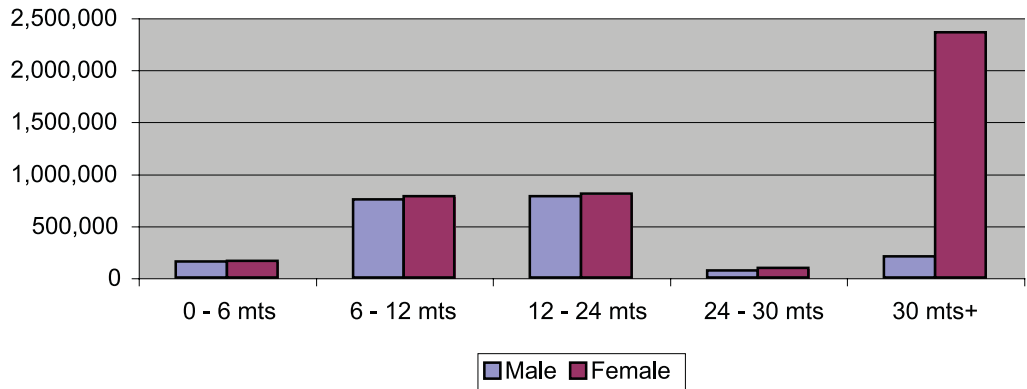
Ch 4

	0 - 6 mts	6 - 12 mts	12 - 24 mts	24 - 30 mts	30 mts +	Total
Male	156,439	750,909	780,949	69,458	200,771	1,958,526
Female	158,385	783,606	805,787	95,437	2,360,525	4,203,740
Total	314,824	1,534,515	1,586,736	164,895	2,561,296	6,162,266

Cattle population by age



Cattle population by age and gender



Age Profile of Live Herd at 31/12/2007 by county

	0 - 6 mts	6 - 12 mts	12 - 24 mts	24 - 30 mts	30 mts +	Total	% of Total
CARLOW	6,158	22,937	27,127	3,789	35,223	95,234	1.5
CAVAN	12,541	54,406	50,568	5,671	97,419	220,605	3.6
CLARE	13,193	69,673	53,771	4,543	123,456	264,636	4.3
CORK	35,200	231,514	226,855	19,576	385,477	898,622	14.6
DONEGAL	9,870	44,941	46,156	4,408	74,484	179,859	2.9
DUBLIN	1,693	4,111	6,927	1,241	8,538	22,510	0.4
GALWAY	22,733	101,909	98,708	10,253	166,574	400,177	6.5
KERRY	14,421	74,721	61,539	4,375	150,285	305,341	5.0
KILDARE	6,876	21,338	33,468	6,064	43,492	111,238	1.8
KILKENNY	12,346	80,360	85,476	7,405	110,534	296,121	4.8
LAOIS	13,245	52,084	65,230	8,023	80,427	219,009	3.6
LEITRIM	5,756	18,077	12,868	1,726	40,211	78,638	1.3
LIMERICK	13,573	93,468	84,745	5,841	154,753	352,380	5.7
LONGFORD	6,606	27,306	29,710	3,386	46,182	113,190	1.8
LOUTH	5,480	14,305	22,874	3,823	29,254	75,736	1.2
MAYO	13,534	67,959	60,146	5,904	117,155	264,698	4.3
MEATH	17,179	51,725	73,775	12,428	103,024	258,131	4.2
MONAGHAN	11,542	47,810	52,626	5,722	78,438	196,138	3.2
OFFALY	12,430	52,123	65,958	6,848	71,683	209,042	3.4
ROSCOMMON	11,033	48,142	49,560	5,441	80,502	194,678	3.2
SLIGO	5,846	27,910	22,832	2,419	50,405	109,412	1.8
TIPPERARY	20,840	151,649	155,474	10,756	208,502	547,221	8.9
WATERFORD	9,112	56,783	57,245	4,766	87,792	215,698	3.5
WESTMEATH	10,885	43,372	54,244	6,701	74,541	189,743	3.1
WEXFORD	13,303	53,831	63,670	8,612	96,252	235,668	3.8
WICKLOW	9,429	22,061	25,184	5,174	46,693	108,541	1.8
TOTAL	314,824	1,534,515	1,586,736	164,895	2,561,296	6,162,266	

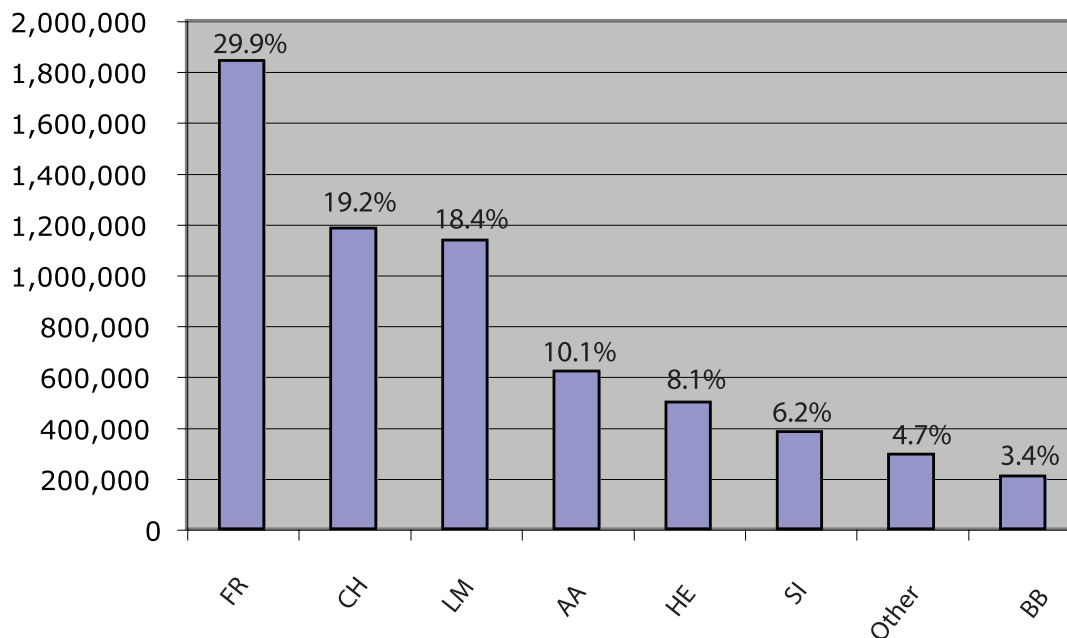
Age Profile of Live Herd at 31/12/2007 by Breed

Ch 4

	0 - 6 mts	6 - 12 mts	12 - 24 mts	24 - 30 mts	30+ mts	Total
FR	49,954	322,330	340,519	42,036	1,087,912	1,842,751
CH	80,753	345,051	356,009	36,440	363,468	1,181,721
LM	82,496	311,315	323,919	36,916	380,672	1,135,318
AA	32,100	206,480	198,217	14,234	170,130	621,161
HE	20,981	148,560	151,634	10,737	165,946	497,858
SI	18,485	81,301	92,581	10,685	178,941	381,993
Other*	13,726	64,059	68,889	7,147	138,620	292,441
BB	16,329	55,419	54,968	6,700	75,607	209,023
Total	314,824	1,534,515	1,586,736	164,895	2,561,296	6,162,266

FR: Friesian**CH:** Charolais**LM:** Limousin**AA:** Aberdeen Angus**HE:** Hereford**SI:** Simmental**BB:** Belgian Blue

* For full list of breeds see appendix



Profile of Live Herd at 31/12/2007 by county and by breed code

COUNTY	FR	HE	CH	LM	SI	AA	BB	Other*	Total
CARLOW	21,413	6,353	19,139	25,270	6,551	8,012	5,356	3,140	95,234
CAVAN	54,475	12,745	57,431	49,550	10,597	16,158	10,003	9,646	220,605
CLARE	43,211	27,790	60,505	83,713	11,875	11,981	10,043	15,518	264,636
CORK	464,720	84,946	65,675	64,490	44,931	114,712	14,375	44,773	898,622
DONEGAL	26,660	3,249	66,686	34,691	15,495	13,406	8,952	10,720	179,859
DUBLIN	5,193	1,721	5,946	3,900	1,770	1,803	1,157	1,020	22,510
GALWAY	44,267	35,963	104,326	123,999	28,513	32,635	15,770	14,704	400,177
KERRY	140,125	30,666	36,682	34,640	11,895	28,680	7,626	15,027	305,341
KILDARE	23,034	7,517	29,262	24,399	8,929	7,531	4,556	6,010	111,238
KILKENNY	107,913	25,833	45,841	50,071	23,003	27,310	6,119	10,031	296,121
LAOIS	54,010	16,660	47,190	46,543	17,574	18,259	8,403	10,370	219,009
LEITRIM	3,804	2,716	30,039	20,817	5,209	7,725	3,708	4,620	78,638
LIMERICK	156,186	48,057	30,275	37,782	11,738	43,881	6,672	17,789	352,380
LONGFORD	12,148	6,248	41,449	26,739	4,936	12,504	5,128	4,038	113,190
LOUTH	20,716	2,309	16,746	12,560	7,615	5,477	4,082	6,231	75,736
MAYO	29,421	8,005	69,651	66,149	23,415	42,641	12,612	12,804	264,698
MEATH	77,448	16,051	58,369	47,399	13,913	23,217	11,196	10,538	258,131
MONAGHAN	53,423	9,810	49,195	38,106	17,196	12,859	8,399	7,150	196,138
OFFALY	37,284	23,026	47,147	45,982	17,192	20,809	7,587	10,015	209,042
ROSCOMMON	8,914	6,765	68,922	51,413	16,917	26,165	8,693	6,889	194,678
SLIGO	13,246	2,150	27,558	25,233	9,836	18,070	6,047	7,272	109,412
TIPPERARY	207,040	64,533	67,375	83,816	29,788	56,825	9,927	27,917	547,221
WATERFORD	92,866	21,962	24,477	22,454	13,699	25,474	3,551	11,215	215,698
WESTMEATH	30,576	15,421	52,637	39,856	10,498	22,806	7,860	10,089	189,743
WEXFORD	84,534	11,435	34,717	51,961	11,932	16,694	15,042	9,353	235,668
WICKLOW	30,124	5,927	24,481	23,785	6,976	5,527	6,159	5,562	108,541
Total	1,842,751	497,858	1,181,721	1,135,318	381,993	621,161	209,023	292,441	6,162,266

FR: Friesian

HE: Hereford

CH: Charolais

LM: Limousin

SI: Simmental

AA: Aberdeen Angus

BB: Belgian Blue

* For full list of breeds see appendix

Profile of Herd Size at 31/12/2007

Ch 4

SECTION 5

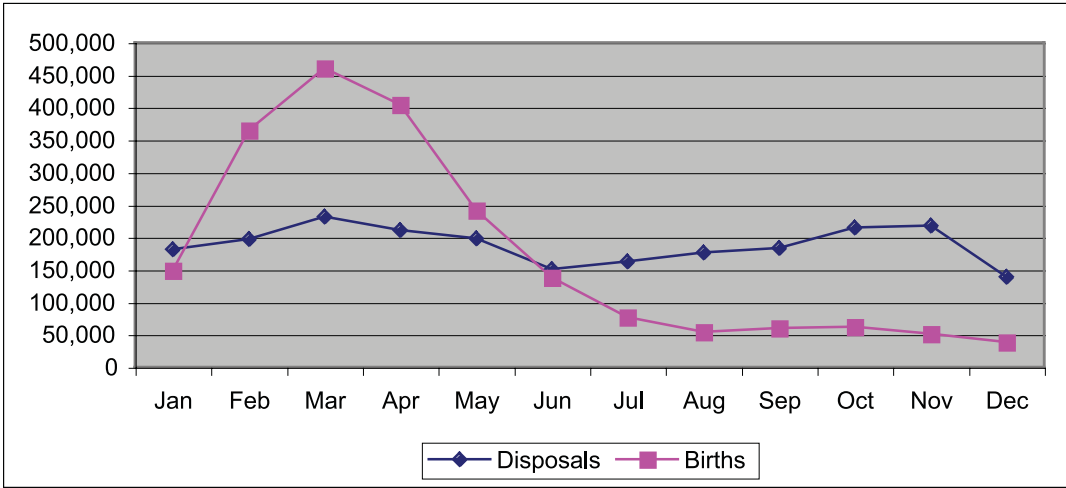
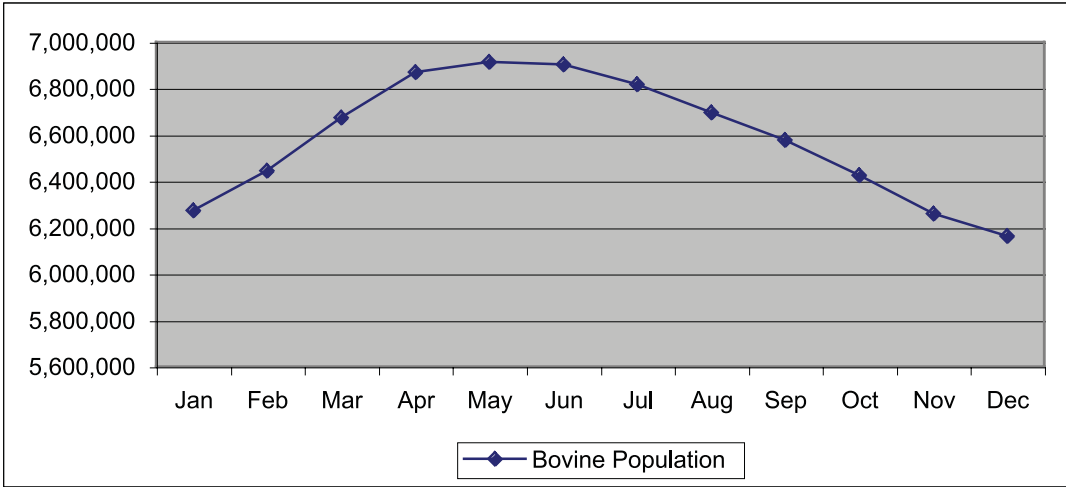
	Cattle	Herds	Av Herd Size	Analysis of Herd Size				
				< 25	25 - 49	50 - 74	75 - 99	100 +
CARLOW	95,234	1,313	72.5	382	278	210	133	310
CAVAN	220,605	4,899	45.0	2,093	1,245	657	368	536
CLARE	264,636	5,970	44.3	2,441	1,650	860	447	572
CORK	898,622	11,827	76.0	3,349	2,270	1,671	1,296	3,241
DONEGAL	179,859	5,511	32.6	3,493	1,034	423	197	364
DUBLIN	22,510	376	59.9	174	80	31	20	71
GALWAY	400,177	11,434	35.0	5,854	3,003	1,282	608	687
KERRY	305,341	6,477	47.1	2,969	1,412	806	491	799
KILDARE	111,238	1,718	64.7	665	334	229	136	354
KILKENNY	296,121	3,087	95.9	567	539	430	358	1,193
LAOIS	219,009	2,786	78.6	743	571	403	296	773
LEITRIM	78,638	3,150	25.0	2,092	700	206	77	75
LIMERICK	352,380	5,340	66.0	1,729	1,156	736	536	1,183
LONGFORD	113,190	2,394	47.3	953	651	350	183	257
LOUTH	75,736	1,127	67.2	416	233	135	90	253
MAYO	264,698	9,498	27.9	5,811	2,352	742	293	300
MEATH	258,131	3,551	72.7	1,243	743	400	298	867
MONAGHAN	196,138	4,051	48.4	1,579	1,050	567	346	509
OFFALY	209,042	3,021	69.2	876	642	493	315	695
ROSCOMMON	194,678	5,366	36.3	2,578	1,537	653	317	281
SLIGO	109,412	3,620	30.2	2,128	883	315	139	155
TIPPERARY	547,221	6,569	83.3	1,558	1,205	993	785	2,028
WATERFORD	215,698	2,233	96.6	541	330	270	244	848
WESTMEATH	189,743	2,900	65.4	886	695	453	292	574
WEXFORD	235,668	3,128	75.3	864	609	448	345	862
WICKLOW	108,541	1,585	68.5	556	336	197	130	366
TOTAL	6,162,266	112,931	54.6	46,540	25,538	13,960	8,740	18,153

Imported Animals in the Live Herd at 31/12/2007

	Male	Female	Total
Austria	1	394	395
Belgium	172	92	264
Germany	10	736	746
Denmark	7	332	339
France	434	4,703	5,137
Italy	15	297	312
Sweden	3	0	3
Switzerland	0	213	213
Norway	0	359	359
Canada	3	40	43
Netherlands	67	1,089	1,156
UK	1,351	2,237	3,588
Total	2,063	10,492	12,555

Bovine Population 2007

	Population	Births	Imports	Disposals	Total	
Start Jan	6,303,313	149,191	2,374	181,140	6,273,738	End Jan
Start Feb	6,273,738	364,516	2,226	196,872	6,443,608	End Feb
Start Mar	6,443,608	460,492	2,221	231,547	6,674,774	End Mar
Start Apr	6,674,774	404,134	1,925	211,173	6,869,660	End Apr
Start May	6,869,660	241,686	1,789	198,476	6,914,659	End May
Start Jun	6,914,659	137,818	1,519	150,758	6,903,238	End Jun
Start Jul	6,903,238	76,450	1,341	162,747	6,818,282	End Jul
Start Aug	6,818,282	53,975	1,738	176,738	6,697,257	End Aug
Start Sep	6,697,257	60,496	1,770	183,221	6,576,302	End Sep
Start Oct	6,576,302	62,115	2,125	215,244	6,425,298	End Oct
Start Nov	6,425,298	51,537	1,810	217,498	6,261,147	End Nov
Start Dec	6,261,147	38,313	1,812	139,006	6,162,266	End Dec



CHAPTER 5 suppliers of CMMS data 2007



LIVESTOCK MARTS

<u>Abbeyfeale Mart</u>	<u>Cavan Mart</u>	<u>Loughrea Mart</u>
<u>Ardee Mart</u>	<u>Clifden Mart</u>	<u>Maam Cross Mart</u>
<u>Athenry Mart</u>	<u>Clones Mart</u>	<u>Macroom Mart</u>
<u>Balla Mart</u>	<u>Delvin Mart</u>	<u>Manorhamilton Mart</u>
<u>Ballina Mart</u>	<u>Dingle Mart</u>	<u>Milford Mart</u>
<u>Ballinakill Mart</u>	<u>Donegal Mart</u>	<u>Milltown Mart</u>
<u>Ballinrobe Mart</u>	<u>Dowra Mart</u>	<u>Mohill Mart</u>
<u>Ballinasloe Mart</u>	<u>Dromcollogher Mart</u>	<u>Mountbellew Mart</u>
<u>Ballybay Mart</u>	<u>Drumshanbo Mart</u>	<u>Mountrath Mart</u>
<u>Ballybofey Mart</u>	<u>Dungarvan Mart</u>	<u>Naas Mart</u>
<u>Ballyjamesduff Mart</u>	<u>Edenderry Mart</u>	<u>Nenagh Mart</u>
<u>Ballymahon Mart</u>	<u>Elphin Mart</u>	<u>New Ross Mart</u>
<u>Ballymote Mart</u>	<u>Ennis Mart</u>	<u>Newport Mart</u>
<u>Ballyshannon Mart</u>	<u>Enniscorthy Mart</u>	<u>Portumna Mart</u>
<u>Baltinglass Mart</u>	<u>Ennistymon Mart</u>	<u>Raphoe Mart</u>
<u>Bandon Mart</u>	<u>Fermoy Mart</u>	<u>Rathkeale Mart</u>
<u>Birr Mart</u>	<u>Fethard Mart</u>	<u>Roscommon Mart</u>
<u>Blessington Mart</u>	<u>Gort Mart</u>	<u>Roscrea Mart</u>
<u>Borris Mart</u>	<u>Gortalea Mart</u>	<u>Scariff Mart</u>
<u>Caherciveen Mart</u>	<u>Granard Mart</u>	<u>Sixmilebridge Mart</u>
<u>Cahir Mart</u>	<u>Headford Mart</u>	<u>Skibbereen Mart</u>
<u>Carlow Mart</u>	<u>Inishowen Mart</u>	<u>Templemore Mart</u>
<u>Carnaross Mart</u>	<u>Kanturk Mart</u>	<u>Thurles Mart</u>
<u>Carnew Mart</u>	<u>Kenmare Mart</u>	<u>Tipperary Mart</u>
<u>Carrick-on-Shannon Mart</u>	<u>Kilcullen Mart</u>	<u>Tralee Mart</u>
<u>Carrick-on-Suir Mart</u>	<u>Kilfenora Mart</u>	<u>Tuam Mart</u>
<u>Carrigallen Mart</u>	<u>Kilkenny Mart</u>	<u>Tullamore Mart</u>
<u>Cashel Mart</u>	<u>Kilmallock Mart</u>	<u>Tullow Mart</u>
<u>Castleblaney Mart</u>	<u>Kilrush Mart</u>	<u>Waterford Mart</u>
<u>Castleisland Mart</u>	<u>Kingscourt Mart</u>	<u>Westport Mart</u>
<u>Castlereagh Mart</u>	<u>Listowel Mart</u>	

LOCAL AUTHORITY ABATTOIRS 2007

Clonmore Meats Ltd., Carlow	Criostoir O'Cruaioi, Cork	William O'Leary, Kerry
Laurence J. Murphy, Carlow	Patrick O'Donoghue, Cork	Richard G. Behan, Kerry
Charles Meyler, Carlow	William F. Murphy, Cork	James Curran, Kerry
Fergal Harford, Cavan	Malachy O'Sullivan, Cork	Peter O'Sullivan, Kerry
Donoghues Foodfare Ltd., Cavan	Patrick Mac Sweeney, Cork	Christopher M. Houlihan, Kerry
Raymond Argue, Cavan	Michael J. O' Neill, Cork	Benny McDonnell, Kerry
Patrick Gaynor, Cavan	Patrick Murphy, Cork	Timothy C. Hennessy, Kerry
Leonard Lynch, Cavan	Michael O'Keeffe, Cork	James J. Walsh, Kerry
Thomas Gaynor & Sons, Cavan	Timothy D. Cronin, Cork	Jerry Houlihan, Kerry
Antony McGurran, Cavan	Thomas Walsh, Cork	Roger J. O'Sullivan, Kerry
Robert Richardson, Cavan	Edmond Clifford, Cork	Pascal Greaney, Kildare
James Smith, Cavan	Daniel Lordan, Cork	James & Niall O'Gorman, Kildare
Kevin Francis Heery, Cavan	Tim Murphy, Cork	James Nolan, Kildare
Joseph Kelly, Clare	Richard Walsh, Donegal	Leo Nolan, Kildare
Edward Joyce, Clare	Patrick McGettigan, Donegal	Patrick Kenna, Kilkenny
John Kelly, Clare	Charles Gallagher, Donegal	Patrick Mullins, Kilkenny
Denis Corcoran, Clare	Michael McGettigan (Donegal) Ltd.	June Prendergast, Kilkenny
Sean G. Haugh, Clare	Mark Robinson, Donegal	Neil Tynan, Kilkenny
Brendan Keane, Clare	Cathal McGlynn, Donegal	Gerry O'Brien, Kilkenny
Kevin Ryan, Clare	Stephan Kerr, Donegal	Michael Tynan, Laois
Martin Haugh, Clare	The National Food Centre, Dublin 15	P. J. Delaney, Laois
Jerry Nolan, Cork	Edna Hayes, Galway	Michael Keegan, Laois
Dan Moloney, Cork	Eugene McEntee, Galway	Michael Dowling, Laois
Cornelius Cronin, Cork	Hugh O'Donnell, Galway	Andrew Shiel, Laois
John McCarthy, Cork	Thomas Lydon, Galway	Pius Hennessy, Laois
Denis McCarthy, Cork	John Joe Brady, Galway	Thomas Kenna, Laois
Eddie Fitzgerald, Cork	Burkes Meats Ltd., Galway	Kevin Bracken, Laois
Michael Hehir, Cork	Justin Flannery, Galway	Dermot J. Morris, Laois
Sean O' Sullivan, Cork	Sean Farrell, Galway	John Cahill, Laois
James & Patrick J. Collins, Cork	Thomas M. Kelly, Kerry	Douglas G. Boyd, Leitrim
Liam O'Driscoll, Cork	Stephen J. Cahillane, Kerry	Mary Ellen & Hugh Logan, Leitrim
Michael Spillane, Cork	William C. Burke, Kerry	Sean McMorrough, Leitrim
John McCarthy, Cork	John O'Connell, Kerry	John O'Malley, Leitrim
John Finn, Cork	Michael O' Shea, Kerry	Sean Rooney, Leitrim
Edward Hanley, Cork	John Burke, Kerry	Damien Thornton, Leitrim
Michael Bresnan, Cork	John F. Ashe, Kerry	Thomas McHugh, Leitrim
Patrick Hegarty, Cork	Kieran Burns, Kerry	Patrick Creamer, Limerick
Patrick J. Collins, Cork	Tim Sheahan, Kerry	Nicholas P. Cooke, Limerick

LOCAL AUTHORITY ABATTOIRS 2007

Michael & Frank Burke, Limerick	Paul Boyd, Offaly	Donal O'Reilly, Waterford
Edmund O'Connor, Limerick	Damian Lynch, Offaly	Sean Dunning, Westmeath
Denis O'Sullivan, Limerick	Michael Healy, Offaly	John Horan, Westmeath
Gerard O' Shea, Limerick	William Browne, Offaly	Bernard A. Troy, Westmeath
Noel Hedigan, Limerick	Benedict Morris, Roscommon	Cannon & Cole, Westmeath
Michael O'Rourke, Limerick	Ignatius Gannon, Roscommon	Hugh Murray, Westmeath
Denis Greaney, Limerick	Stanley Taylor, Roscommon	Joe Tynan, Westmeath
Tadgh O'Keeffe, Limerick	Oliver McCabe, Roscommon	Peter Gillivan, Westmeath
Sean Fitzgerald, Limerick	Joseph Regan, Roscommon	Declan Lenihan, Westmeath
John Campbell, Longford	Michael Webb, Roscommon	John Gillivan, Westmeath
John Casey, Longford	Thomas Hynes, Roscommon	Anthony Gavagan, Westmeath
Ronald Rawle, Longford	Patrick Roddy, Roscommon	Ray Mulligan, Westmeath
Desmond Savage, Louth	Cyril McHugh, Roscommon	Camilius Cleary, Westmeath
Anthony Heffernan, Mayo	Padraig Gilligan, Roscommon	James Mortimer, Westmeath
Paddy Reilly, Mayo	Patrick G. Burns, Sligo	Peter McGuinness, Westmeath
Martin Calvey, Mayo	Noel Wynne, Sligo	Christopher Byrne, Wexford
William Jennings, Mayo	Paschal Clohosey, Tipperary	Richard Doyle, Wexford
Sean F. Kelly, Mayo	Charles Williams, Tipperary	Matt Finn, Wicklow
Philip Gibbons, Mayo	Edward Lacey, Tipperary	Wicklow Abattoir Ltd., Wicklow
Thomas P. Byrne, Mayo	Thomas Myles, Tipperary	Anthony & Padraig Farrelly, Wicklow
John Moore, Mayo	William G. Fitzgibbon, Tipperary	Damien Murphy, Wicklow
Edward Phillips, Mayo	Joseph Hammersly, Tipperary	Myles Doyle, Wicklow
Gerard & Val McGreal, Mayo	Tom O'Donnell, Tipperary	
Anthony Carolan, Mayo	Patrick Walsh, Tipperary	
James Duffy, Mayo	Kevin Dalton, Tipperary	
Seamus Hawkshaw, Mayo	Liam Treacy, Tipperary	
Martin Maloney, Mayo	Michael Buckley, Tipperary	
James Molloy, Mayo.	Martin O'Dwyer, Tipperary.	
James P. Gibney, Meath	Michael & Maurice Whelan, Tipperary	
William Donnelly & Sons Ltd, Meath	John O'Dwyer, Tipperary	
Michael & Niall Brogan, Meath	James O'Malley, Tipperary	
Declan O'Neill, Meath	Patrick Joseph Moloney, Tipperary	
Michael Coogan, Meath	Andrew English, Tipperary	
Gerard & Martin Quinn, Monaghan	John Hogan, Tipperary	
James Short, Monaghan	William Gahan, Tipperary	
Hugh & Patrick J. Maguire, Monaghan	Robert Colm Lewis, Tipperary	
John McGuinness, Monaghan	Robert Flynn, Waterford	
Dominick Feely, Offaly	Michael McGrath, Waterford	

APPROVED EXPORT POINTS 2007

Ballyjamesduff Mart, Cavan	Ballymahon Mart, Longford
Dowra Mart, Cavan	Granard Mart, Longford
Kellehers Lairage, Cork	Laragh Livestock, Louth
Murphy-Hunter, Cork	Ballina Mart, Mayo
Ballyshannon Mart, Donegal	Dixons, Mayo
Raphoe Mart, Donegal	Carnaross Mart, Meath
Lenehans, Dublin	O'Connell's Lairage, Meath
Gort Mart, Galway	Ballybay Mart, Monaghan
Tuam Mart, Galway	Castlerea Mart, Roscommon
Halliseys, Kerry	Elphin Mart, Roscommon
Kilkenny Mart, Kilkenny	Roscommon Mart, Roscommon
Carrick-on-Shannon Mart, Leitrim	Ballymote Mart, Sligo
Carrigallen Mart, Leitrim	Nenagh Mart, Tipperary
Drumshanbo Mart, Leitrim	Roscrea Mart, Tipperary
Manorhamilton Mart, Leitrim	TLT, Westmeath
Mohill Mart, Leitrim	Enniscorthy Mart, Wexford
Casey's, Limerick	Scallans, Wicklow

LICENSED KNACKERIES 2007

Moyle Animal Collection Ltd., Carlow

Laurence Buggy Carlow

Colm Mulvaney, Cavan

Kevin Mulvaney, Cavan

James Lambe, Cavan

Vincent Coffey, Clare

Carbery Hunt Kennels, Cork

William Fitzgerald, Cork

The Trustees, Duhallow Hunt, Cork

Liam Duggan, Cork

Bartlemy Road Disposal Service Ltd, Cork

James Barrett Jnr., Cork

John Green, Galway

Frank Madden, Galway

Kildare Hunt Club, Kildare

South Kilkenny Foxhounds

Thomas Lawless, Laois

John Styles, Laois

Ward Waste Products, Limerick

John McGuinness, Longford

LKS Disposals, Louth

Ballymacad Stud, Meath

Meath Hunt Club, Meath

John O'Rourke, Meath

Oldcastle Laboratories, Oldcastle

Ward Union Hunt, Meath

John Costelloe, Offaly

Midland Animal Collection, Roscommon

Tipperary Foxhounds, Tipperary

Beechfield Products Ltd, Tipperary

Michael Duggan, Tipperary

Richard Keane, Tipperary

Suir Vale Harriers, Tipperary

Golden Vale Hunt, Tipperary

David Flanagan, Tipperary

Patrick Morrissey, Tipperary

Nicholas Hannigan, Waterford

K Guinness, Westmeath

Larry Earle, Wexford

FACTORIES

AIBP, Bandon, Cork

AIBP, Cahir, Tipperary

AIBP, Clones, Monaghan

AIBP, Nenagh, Tipperary

AIBP, Rathkeale, Limerick

AIBP, Waterford

Ashbourne Meats, Tipperary

B & F Meats, Kilkenny

Ballaghaderreen Pork, Roscommon

Ballon Meats, Carlow

Bergins, Broadford, Kildare

Dawn Ballaghaderreen, Roscommon

Dawn Ballyhaunis, Mayo

Dawn Meats, Cork

Dawn Meats, Waterford

Dunleavy Meats, Mayo

Eurofarm Foods, Meath

Donegal Meats

Dunbia Meats, Westmeath

Charleville Foods, Cork

Glynns, Limerick

Honeyclover, Kilkenny

Kepak, Athleague, Roscommon

Kepak, Watergrasshill, Cork

Kepak, Clonee, Meath

Kildare Chilling, Kildare

Liffey Meats, Cavan

Liffey Meats, Hacketstown

Martin Jennings, Mayo

McGavigan Meats, Donegal

Meadow Meats, Laois

Dunbia Meats, Meath

O'Connor Meats, Roscommon

Sean Duffy Ltd, Galway

Slaney Meats, Wexford

Tara Farm Foods, Cavan

APPENDIX

OFFICIAL LIST OF BREED CODES

ANGUS	AA
ANKOLE	AK
ANGLER	AN
ARMORICAINE	AM
AUBRAC	AU
AYRSHIRE	AY
BALTATA ROMANEASCA	BT
BAZADAIS	BZ
BEEFALO	BE
BELGIAN BLUE	BB
BISON	BI
BLONDE D'AQUITANE	BA
BLUE ALBION	BL
BLUE GREY	BG
BRAHMAN	BR
BRETONNE PIE-NOIRE	BP
BRITISH WHITE	BW
BROWN SWISS	BS
CANADIAN BLACK	CB
CHAROLAIS	CH
CHIANINA	CI
CHILLINGHAM	CL
DANISH RED	RD
DEVON	DE
DEXTER	DX
DROIMEANN	IM
DWARF ZEBU	DZ
EAST FINNISH BROWN	EF
ENGLISH PARK	EP
FRISONA ESPAGNOLA	FE
GALLOWAY	GA
GASCONNE	GC
GAYAL	GY
GELBVIEH	GV
GLOUCESTER	GL
GRONINGER BLAARKOP	GB
GUERNSEY	GU
HEREFORD	HE
HIGHLAND	HI
HOLSTEIN/FRIESIAN	FR
IRISH MAOL	IM
JERSEY	JE

KERRY	KE
LIMOUSIN	LM
LINCOLN RED	LR
LONGHORN	LH
LUING	LU
MAINE ANJOU	MA
MALKEKORTHORN	MK
MARCHIGIANA	MH
MONTBELLARDE	MO
MRI/MRY	MY
MURRAY GREY	GS
NORMANDE	NO
NORWEGIAN RED	NR
OLD ENGLISH	OE
PARTHENAISE	PT
PIEDMONTESE	PI
PINZGAUER	PZ
RED POLL	RP
REGGIANA	RE
ROMAGNOLA	RM
ROTBUNTE	RB
SALERS	SA
SHETLAND	SL
SHORTHORN	SH
SIMMENTAL	SI
SOUTH DEVON	SD
SPECKLE PARK	SP
STABILISER	ST
SUSSEX	SU
SWEDISH RED	SR
SWISS GREY	SG
TARANTAISE-TARINA	TT
TYRONE BLACK	TY
VALDOSTANA NERA	VN
VAYNOL	VA
VOSGIENNE	VO
WAGYU	WA
WATER BUFFALO	BF
WELSH BLACK	WB
WELSH WHITE	WW
WHITE PARK	WP
YAK	YK
ZEBU	ZE

