



# Fact Sheet on Irish Agriculture – October 2013



## A: Role of Agriculture, Fisheries, Forestry and Food in the Irish Economy

Key Indicators for Primary and Agri-Food Sectors			Employment in the Agri-Food Sector (000s)
<i>Relevant period in brackets.</i>	Primary Sector <sup>1</sup>	Agri-Food Sector <sup>2</sup>	<p>Based on Central Statistics Office data (Q2 2013).</p>
% of GVA at factor cost (2012)	2.4%	7.1%	
% of employment (2013-Q2)	5.5%	8.6%	
% of merchandise exports (2012)	7.3%	11%	
According to the Census of Industrial Production 2011 the Food & Beverages Sector accounts for:  <b>23% of all Industry Turnover</b> (25% of all Manufacturing Industry Turnover)  <b>21% of all Industry Gross Output</b> (23% of all Manufacturing Industry Gross Output)			

## B: Public Expenditure and Agriculture Related Payments

Total public expenditure on the agri-food sector by the Department of Agriculture, Food and the Marine was approximately €2.6 billion in 2012. DAFM payments to farmers in 2012 totalled €1.9 billion, including Single Farm Payment, Rural Development, Structural and Forestry payments.

DAFM Expenditure on Irish Agriculture, 2012		
1 January to 31 December 2012	€m	
EAGGF Guarantee direct expenditure	1,292.5	
Single Farm Payment	1,248.0	
Grassland Sheep, Burren Life, Dairy Efficiency Schemes	39.0	
Private Storage	1.0	
Export Refunds	0.0	
Other Market Supports & Recoveries	4.5	
Voted Expenditure (excluding Administration)	1,095.1	
Rural Development*	479.9	
Structural Measures*	49.3	
State Bodies	192.2	
Horse and Greyhound Fund	56.3	
Animal Health	111.3	
Research and Training	32.4	
Market Support Costs*	21.2	
Forestry and Bio-Fuels	112.7	
Fisheries	9.9	
Food Aid	9.9	
Other	20.0	
Administration	222.9	
Total Voted Expenditure	1,318.0	
Total DAFM Expenditure	2,610.5	
* Total initial payments from the Vote - EU-funded elements recouped to the Vote subsequently.		

<sup>1</sup> Primary sector taken to comprise Agriculture, Fisheries and Forestry.

<sup>2</sup> Comprises primary production, food, beverages & tobacco (in GVA & exports only) and wood processing sectors. Source: CSO and DAFM.

## C: Estimates of Aggregate Agricultural Output, Input and Income - CSO

- The CSO's Preliminary Estimate of operating surplus in agriculture in 2012 was €2,241 million, a decrease of 7.5% on 2011.
- In 2012, subsidies, net of levies, accounted for 73% of operating surplus.
- Beef and milk production currently account for about 67% of agricultural output at producer prices (excluding forage).

Output, Input and Income in Agriculture, 2012					
Main Aggregates	Value €m		Main Commodities	Value €m	% of G/O
Goods Output @ Producer Prices <sup>(1)</sup>	6,716.60		Goods Output (excl forage)	5,583.40	100%
+ Contract Work	360.40		<i>of which</i>		
+ Subsidies - Taxes (Products)	-28.50		Cattle	2,119.60	38.0%
Agricultural Output @ Basic Prices	7,048.80		Milk	1,629.80	29.2%
- Intermediate Consumption	5,293.40		Pigs	441.50	7.9%
Gross Value Added @ Basic Prices	1,755.40		Sheep	204.40	3.7%
- Fixed Capital Consumption	720.00		Cereals	336.60	6.0%
+ Subsidies - Taxes (Production)	1,666.90		Others	851.50	15.3%
- Compensation of Employees	461.20		Forage Plants	1,133.20	
Operating Surplus	2,241.20		Goods Output at Producer Prices <sup>(1)</sup>	6,716.60	

<sup>1</sup> Including Forage

Source: CSO Output, Input and Income in Agriculture - 2012 Final Estimate (June 2013)

## D: Estimates of Family Farm and Farm Household Income

- The 2012 National Farm Survey (NFS)<sup>3</sup> from Teagasc estimates **that average farm income (excluding off-farm income) decreased by 15% in 2012 to €25,479**. Full-time farms, as defined by Teagasc, had an average farm income of **€45,366**, while the part-time equivalent was **€12,029**.
- The 2012 NFS also estimated that on **50% of farms the holder and/or spouse had an off-farm job, down from 51% in 2011**. **74% of farmers and/or their spouses had an off-farm source of income** either from employment, pensions or social assistance.

## E: Farm Structures

Farm Structures Data for Ireland		
Relevant Year	Statistic	Relevant Data
<b>2010</b>	Farm Holdings	139,860
<b>2010</b>	Average Farm Size	32.7 Hectares
<b>2010</b>	Family Farm Holders by Age	6.2% < 35; 51.4% > 55
<b>2012 <sup>(1)</sup></b>	Employment in Agriculture, Forestry & Fishing (CSO)	103,400
<sup>1</sup> Persons employed in agriculture is based on the CSO's Quarterly National Household Survey (QNHS). It covers people who identified agriculture as their <b>primary</b> source of income in the week preceding the survey.		
Sources: <b>Census of Agriculture 2010; CSO QNHS, Q2 2013</b>		

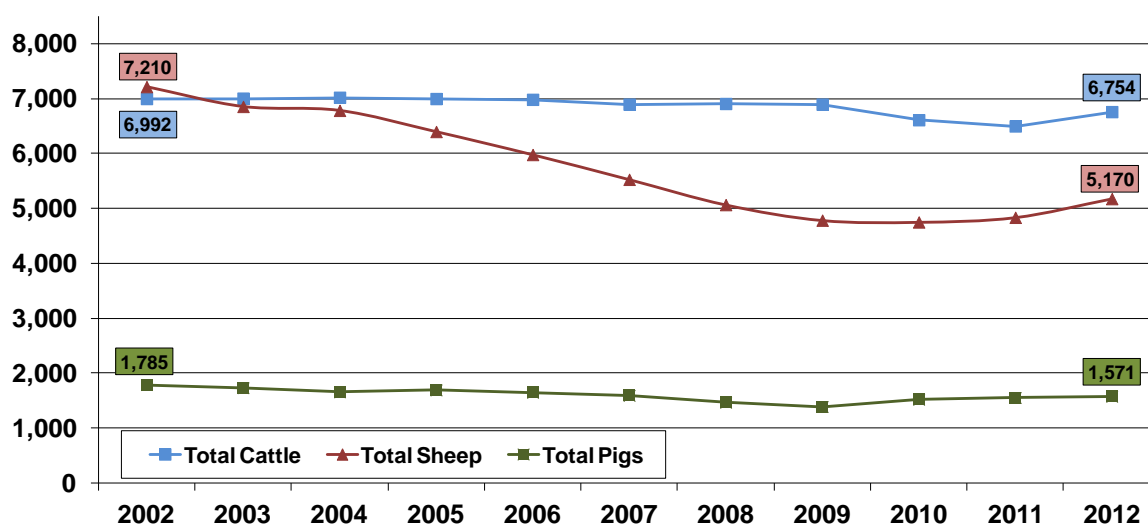
<sup>3</sup> From the 2012 [National Farm Survey](#) farms with a Standard Output of less than €8,000 are excluded. This means that thousands of the smallest farms in the country are not taken into account in the calculation of these averages.

## F: Land Usage & Livestock Numbers

- The land area of Ireland is 6.9 million hectares, of which 4.5 million hectares is used for agriculture and a further 760,000 hectares for forestry (see also "area under certain crops" in the adjoining table).
- 81% of agricultural area is devoted to pasture, hay and grass silage (3.67 million hectares), 11% to rough grazing (0.48 million hectares) and 8% to crops, fruit & horticulture production (0.38 million hectares).
- The average land price in Ireland in 2012 was estimated to be €9,954 per acre. (Source: Farmers Journal Agricultural Land Price Report, 2012).

Area Under Certain Crops	
	000's Hectares
Cereals	315.4
of which	
Wheat	98
Oats	23.7
Barley	192.8
Potatoes	9.0
CSO Crops & Livestock Survey, June 2012 Final	

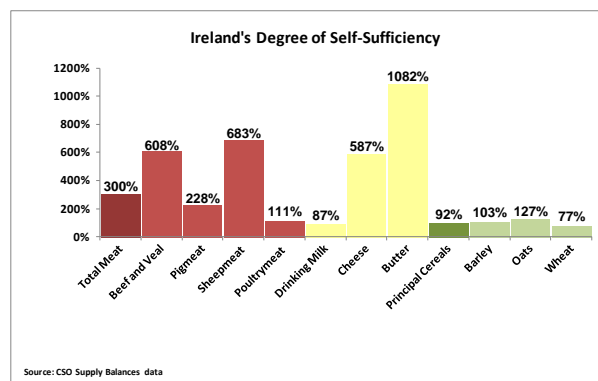
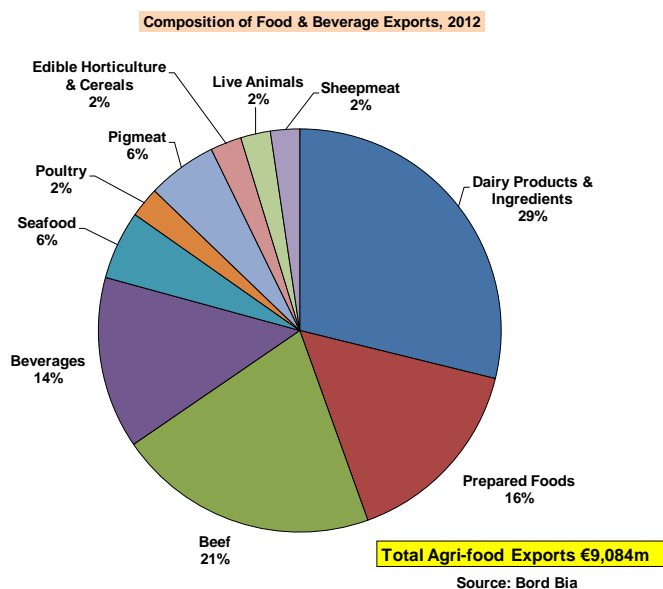
Livestock Numbers (000s), 2002-2012



Source: CSO June Livestock Surveys (most recent: June 2012 Final)

## G: Self-Sufficiency and Exports

Bord Bia estimated that in 2012 Ireland exported over **€9 billion** of Food & Beverages, a result in large measure of Ireland's high level of self sufficiency in many products.



H: Commodity Price Trends

