

Fact Sheet on Irish Agriculture – September 2017¹

A: Role of Agriculture, Fisheries, Forestry and Food in the Irish Economy

Key Indicators for Primary and Agri-Food Sectors			Employment in the Agri-Food Sector, 2016 (000s) ²	
	Primary Sector ³	Agri-Food Sector		
% of GVA at factor cost (2014)	2.5%	7.6%	<p>Agriculture, Forestry and Fishing, 112.9</p> <p>Wood Processing, 4.0</p> <p>Beverages, 4.7</p> <p>Food, 51.9</p> <p>Total Agri-food Employment: 173,400</p> <p>Based on CSO QNHS 2016 average</p>	
% of employment (2016)	5.6%	8.6%		
% of merchandise exports (2016 ⁴)	6.6%	10.3%		
<p>According to the Census of Industrial Production, 2012, the Food & Beverages Sector accounts for:</p> <p>24% of all Industry Turnover (26% of all Manufacturing Industry Turnover)</p> <p>22% of all Industry Gross Output (24% of all Manufacturing Industry Gross Output)</p>				

B: Public Expenditure and Agriculture Related Payments

Total public expenditure on the agri-food sector by the Department of Agriculture, Food and the Marine was more than **€2.5 billion** in 2016. DAFM payments to farmers totalled **€1.8 billion**, including Single Farm Payment, Rural Development, Structural and Forestry payments.

DAFM Expenditure on Irish Agriculture, 2016		
1 January to 31 December 2016	€m	
EAGGF Guarantee direct expenditure	1,249.0	
Basic Payment / Direct Payment Scheme	1300.0	
Intervention / Aid to Private Storage (1)	3.0	
Other Market Supports	7.0	
Other Market Supports	-61.0	
Voted Expenditure (excluding Administration)	1,040.7	
Rural Development*	422.6	
Structural Measures*	18.4	
State Bodies	211.0	
Horse and Greyhound Fund	74.0	
Animal Health	77.7	
Research and Training	30.2	
Market Support Costs*	22.1	
Forestry and Bio-Fuels	103.8	
Fisheries	18.9	
Food Aid / World Food Programme	40.0	
Other	22.0	
Administration	216.1	
Total Voted Expenditure	1,256.8	
Total DAFM Expenditure	2,505.8	

¹ For further statistics on Irish agriculture, see [D/AFM Annual Review and Outlook 2016-2017](#)

² Employment figure relates to persons employed in agriculture, forestry and fishing is from the CSO's Quarterly National Household Survey (QNHS) Q1 – Q4 2016 average. It covers people who identified this sector as their **primary** source of income in the week preceding the survey. See [Farm Structures Survey 2013](#), [CSO QNHS](#).

³ Primary sector taken to comprise Agriculture, Fisheries and Forestry.

⁴ 10.8% (€12bn) comprises exports of primary unprocessed products, food & beverages whereas Bord Bia (Section G) covers Food & Beverages only

C: Estimates of Aggregate Agricultural Output, Input and Income – CSO

- The [CSO's Final Estimate](#) of operating surplus in agriculture in 2016 was **€2,587 million**, increasing by 3.3% from €2,503m in 2015.
- Beef and milk production currently account for 67.8% of agricultural output at producer prices (excluding forage).
- The Value of other subsidies less taxes on production is estimated to have increased by 13.5% from €1,402m in 2015 to €1,592m in 2016.

Output, Input and Income in Agriculture, 2016					
Main Aggregates	Value €m		Main Commodities	Value €m	% of G/O
Goods Output @ Producer Prices ⁽¹⁾	7,057.9		Goods Output (excl forage)	6,008.5	100%
+ Contract Work	361.5		<i>of which</i>		
+ Subsidies - Taxes (Products)	0.2		Cattle	2,281.9	38.0%
Agricultural Output @ Basic Prices	7,419.6		Milk	1,790.3	29.8%
- Intermediate Consumption	5,103.4		Pigs	468.0	7.8%
Gross Value Added @ Basic Prices	2,316.1		Sheep	255.2	4.2%
- Fixed Capital Consumption	812.7		Cereals	230.8	3.8%
+ Subsidies - Taxes (Production)	1,592.1		Others	982.3	16.3%
- Compensation of Employees	507.7		Forage Plants	1,049.4	
Operating Surplus	2,587.9		Goods Output at Producer Prices ⁽¹⁾	7,057.9	

¹ Including Forage

Source: [CSO Output, Input & Income in Agriculture - 2016 Final Estimate](#)

D: Estimates of Family Farm and Farm Household Income

- The 2016 [National Farm Survey \(NFS\)](#)⁵ Results from Teagasc showed that **average Family Farm Income** (which excludes off-farm income) **decreased by 9% in 2016, to €23,848**⁶.
- The 2016 NFS data indicated that on **49% of farms the holder and/or spouse had an off-farm job** and that **74% of farms the farmer and/or spouse** had some source of off-farm income be it from employment, pension or social assistance.
- The CSO's [Farm Structures Survey 2013](#), estimated the average **Standard Output** of an Irish farm as **€35,912**. Standard output is the average monetary value of agricultural output at farm-gate prices.

E: Farm Structures

Farm Structures Data for Ireland		
Relevant Year	Statistic	Relevant Data
2013	Farm Holdings	139,600
2013	Average Farm Size	32.5 Hectares
2013	Family Farm Holders by Age	5.9% < 35; 52.7% > 55
2016	Employment in Agriculture, Forestry & Fishing (CSO)	173,400

⁵ Only farms with a Standard Output of more than €8,000 are covered by the [National Farm Survey](#).

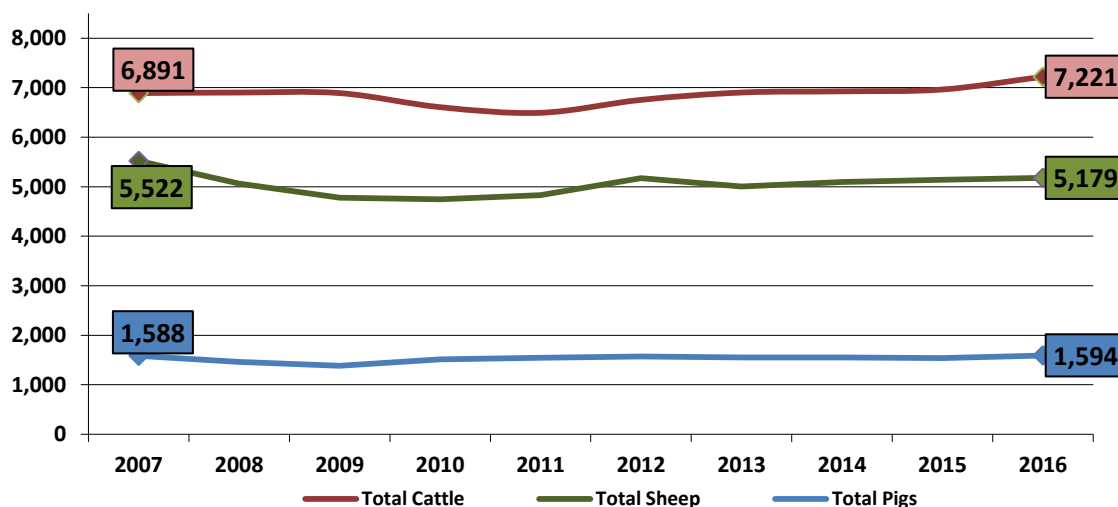
F: Land Usage & Livestock Numbers

- The land area of Ireland is 6.9 million hectares (2014), of which 4.4m hectares is used for agriculture and a further 0.73 million hectares for forestry.
- 80% of agricultural area is devoted to pasture, hay and grass silage (3.6 million hectares), 12% to rough grazing (0.5 million hectares) and 8% to crops (including cereals, see across), fruit & horticulture production (0.36 million hectares).
- The average land price in Ireland in 2016 was estimated to be €8,771 per acre. (Source: Farmers Journal Agricultural Land Price Report, 2015).

Area Under Certain Crops	
	000's Hectares
Cereals	281.1
<i>of which</i>	
Wheat	67.9
Oats	23.2
Barley	189.2
Potatoes	9.0

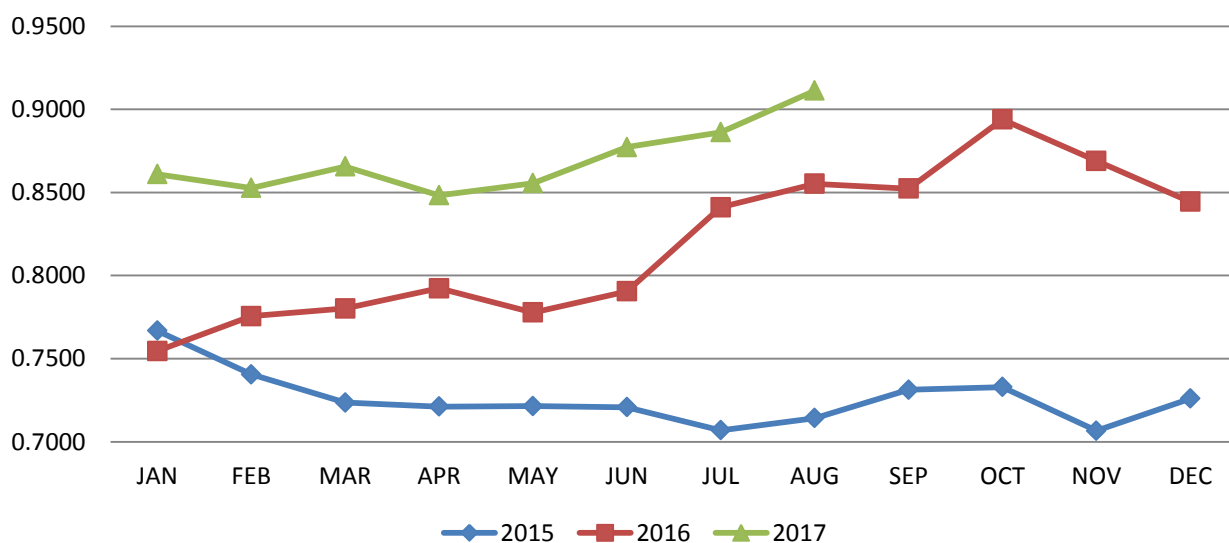
[CSO Crops & Livestock Survey, June 2016 - Final](#)

Livestock Numbers (000s), 2007-2016



CSO June Crops & Livestock Surveys (latest, [June 2016 final](#))

G: Exchange Rates (Euro/STG)

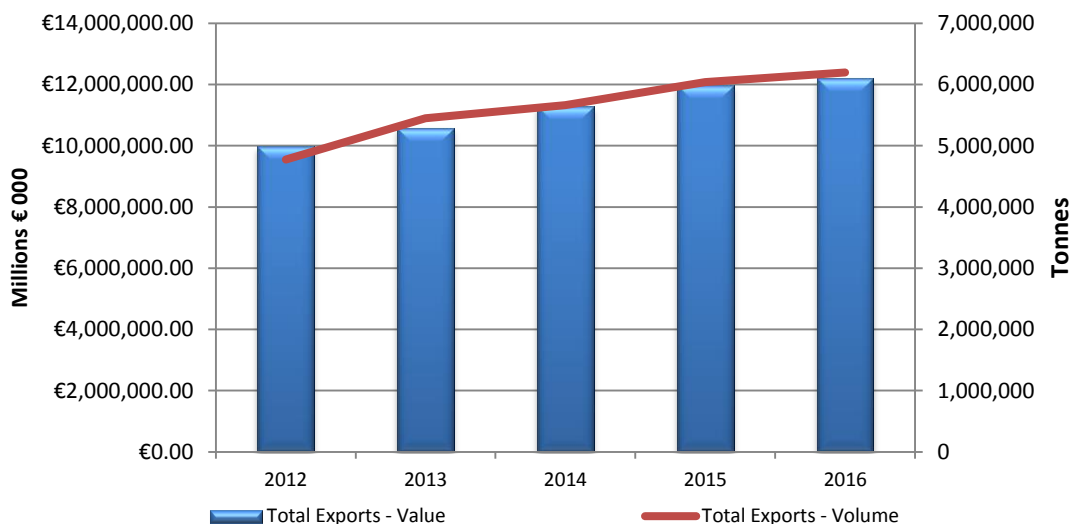


Source: Central Bank

H: Exports⁷

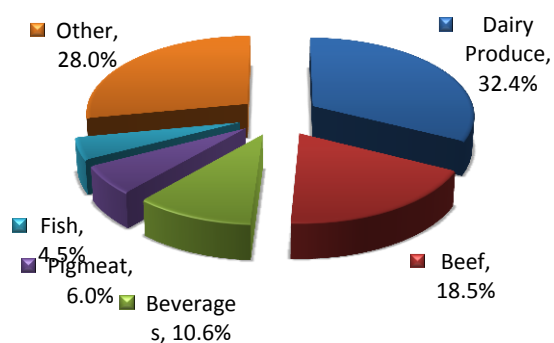
- The agri-food sector accounted for **10.3%** of total **exports** in 2016, and **11.3%** of total **imports**.
- Agri-food exports totalled **€12.2 billion** in 2016, an increase of 1.8% on 2015 according to the CSO, while agri-food imports for the period were €8.1 billion.
- Between the period **2009 – 2016** agri-food exports **increased by 56%** from €7.8 billion to €12.2 billion.

Value & Volume of Agri-food sector exports by Year.

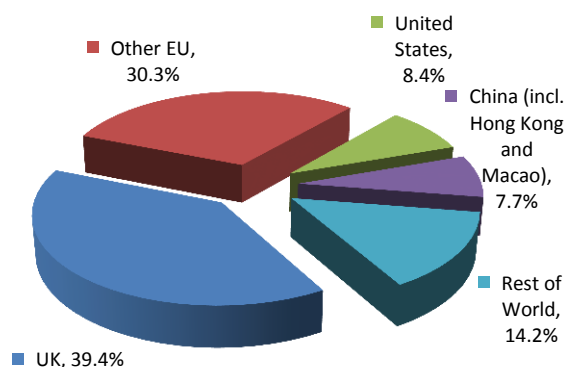


Source: CSO Trade Statistics.

Agri-food exports by type, 2016.



Agri-food exports by destination, 2016



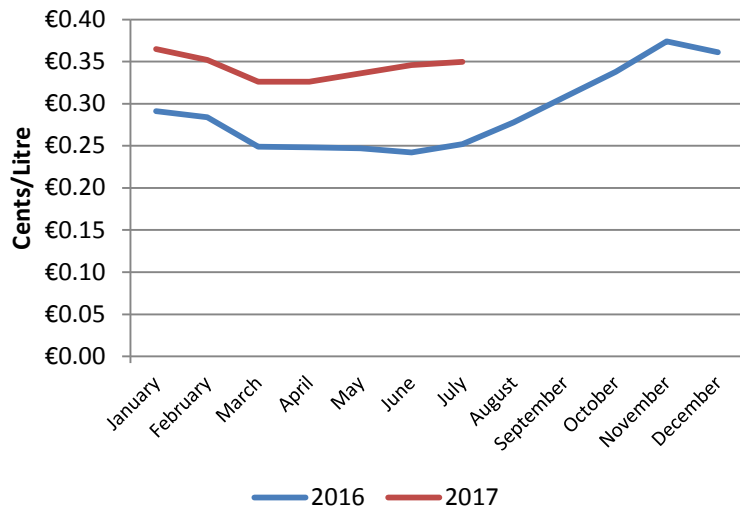
Source: CSO Trade Statistics.

⁷ Agri-food exports are broken down into 24 categories identified and agreed by Department of Agriculture, Food and the Marine and the Central Statistics Office. Products and Raw Goods are categorised using combined nomenclature codes, a European harmonised system used to classify goods for customs and trade reasons. These categories include agri-food items such as Forestry, and Animal Hides and Skins which are not included as part of Bord Bia trade statistics.

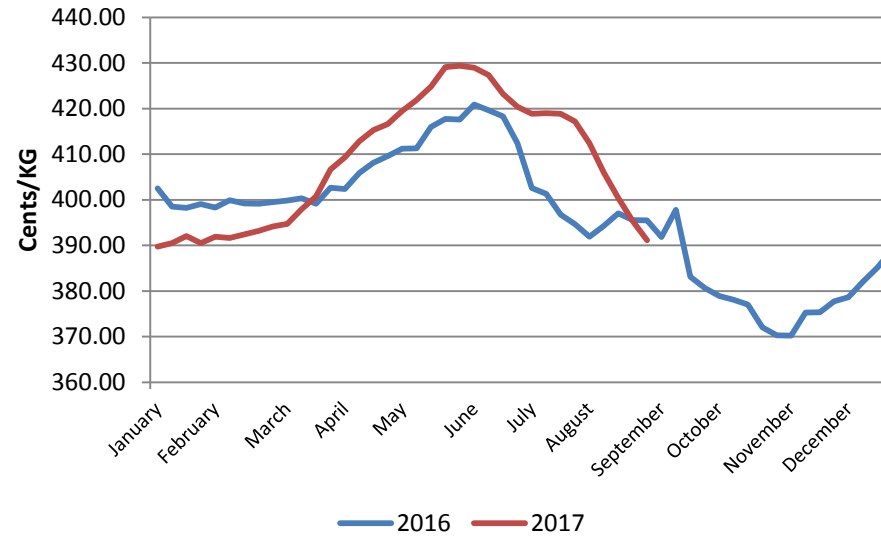
Further information on agri-food trade can be found in Chapter 4 of the [Annual Review and Outlook](#).

I: Commodity Price Trends

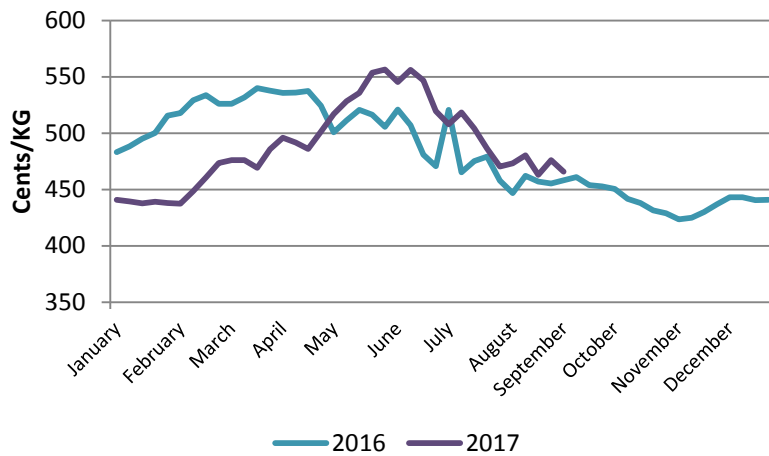
Manufacturing Milk Prices, 2016 – 2017



Steer Prices (R4), 2016 – 2017



Sheep Prices at Meat Export Premises, 2016 - 2017



Grade E Pig Prices, 2016 - 2017

