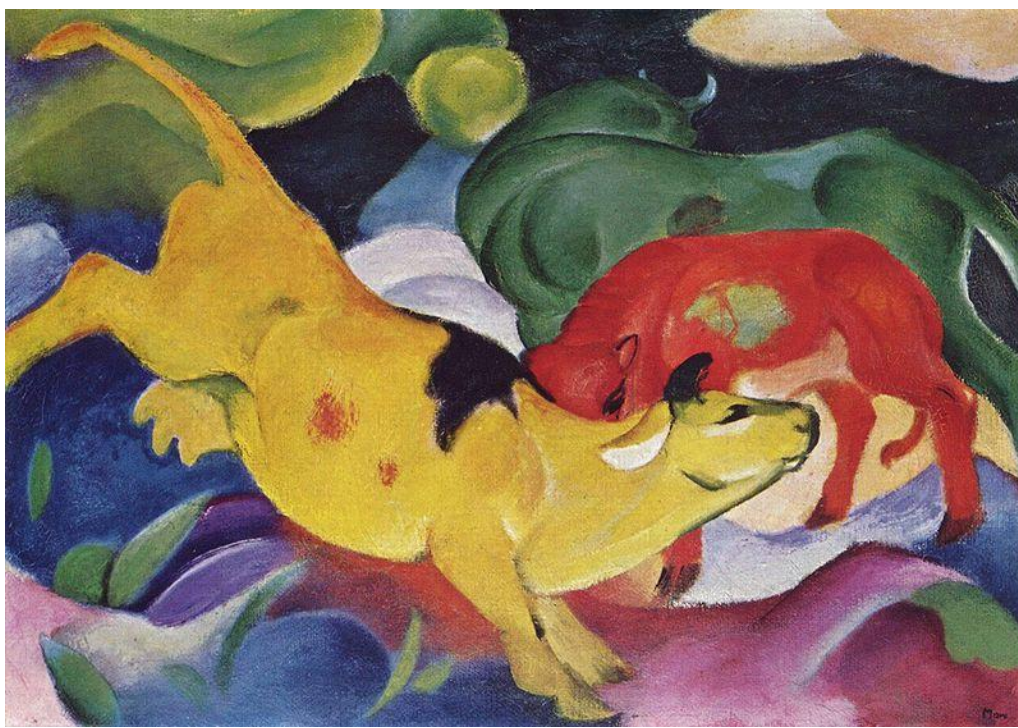


***BEEF CARCASE CLASSIFICATION***  
*and*  
***PRICE REPORTING SECTION***



(Franz Marc 1880 – 1916\*)

**ANNUAL REPORT 2010**

## CONTENTS

### **1. CLASSIFICATION RESULTS**

- 1.1 Steers
- 1.2 Heifers
- 1.3 Cows
- 1.4 Young Bulls

### **2. ANALYSIS OF PRICE REPORT DATA**

- 2.1 Steers
- 2.2 Heifers
- 2.3 Cows

### **3. SLAUGHTERINGS, OUTPUT AND EXPORTS**

- 3.1 Numbers slaughtered
- 3.2 Seasonality of slaughtering
- 3.3 Live exports

### **4. INSPECTIONS**

- 4.1 Classification Checks
- 4.2 Factory price Audits

### **5. PRICE REPORTING BY SUBCLASSES**

- Annex I** Cold Carcase Weights 2009 and 2010
- Annex II** Carcase Classification results 2009 and 2010
- Annex III** Prices for individual Conformation and Fat Classes (cent/kg) 2009 and 2010
- Annex IV** Plants classifying Beef Carcases and Price reporting 2010
- Annex V** National Average Prices by sub-class
- Annex VI** Average Weights in each sub-class
- Annex VII** Numbers in each sub-class

### SUMMARY – 2010

- Total slaughterings at export-approved plants increased in 2010 (1,642,592) compared to 2009 (1,524,694). The downward trend in the Steer kill since 2006 was reversed and a significant increase in the Young Bull and Bull kill is noted.
- In 2010 there was an increase in the average carcase weight for steers, heifers, and cows while the average weight for young bulls reduced slightly.
- In 2010 the proportion of Steer carcasses in the conformation grade U increased when compared to 2009 with a corresponding decrease in the proportion of steers in the conformation grade R. In 2010 there was a reduction in the percentage of steers in Fat Classes 1 and 2 and an increase in the percentage of steers in fat class 3 and 4 when compared to 2009.
- In 2010, there was an increase in the percentage of Heifers grading U and R when compared to 2009.
- Live exports of calves, weanlings, stores and finished cattle continued to rise in 2010.
- In 2010, all plants using mechanical classification and 2 plants using manual classification included the use of sub-classes when reporting the classification results to the Department.

## 1. CARCASE CLASSIFICATION RESULTS 2001 to 2010

*Note: Cold carcase weights by conformation and fat class for 2009 and 2010 are shown at Annex I  
Conformation and Fatness by sex category 2009 and 2010 are shown at Annex II  
All figures in this section are compiled from data received from Price Reporting factories only.*

### 1.1 STEERS

#### 1.1.1 Carcase Weight

Average Carcase weights in 2010 were up slightly on the 2009 figure.

**Table 1      Average Steer Carcase weights (Kg Cold) 2001 to 2010**

Year	Weight (kg)
2001	339
2002	334
2003	341
2004	338
2005	352
2006	351
2007	358
2008	351
2009	351
2010	354

#### 1.1.2 Conformation

In 2010 the proportion of carcasses in the U grade continued to increase.

**Table 2      Steer Conformation (%) 2001 to 2010**

	E	U	R	O	P+	P	P-	Numbers
<b>2001</b>	-	3.3	43.4	48.3	4.8	0.2	-	952,330
<b>2002</b>	-	4.5	47.7	42.1	5.5	0.2	-	862,357
<b>2003</b>	-	7.7	51.0	35.5	5.8	0.1	-	918,794
<b>2004</b>	-	7.0	50.9	36.3	5.4	0.2	-	807,219
<b>2005</b>	-	6.3	45.7	41.2	5.1	1.2	-	722,664
<b>2006</b>	-	6.2	42.9	43.5	5.8	1.4	0.3	754,408
<b>2007</b>	-	6.6	45.2	41.4	4.9	1.3	0.3	749,240
<b>2008</b>	-	5.8	43.5	43.6	5.1	1.5	0.3	679,323
<b>2009</b>	-	7.3	43.8	42.2	4.9	1.4	0.3	635,654
<b>2010</b>	-	8.6	42.8	42.1	4.9	1.4	0.3	649,539

### 1.1.3 Fatness

In 2010 there was a reduction in the percentage of steers in fat class 1 and 2 and an increase in the percentage of steers in Fat Classes 3 and 4.

**Table 3      Steer Fatness (%) 2001 to 2010**

	<b>1</b>	<b>2</b>	<b>3</b>	<b>4</b>	<b>5</b>	<b>Numbers</b>
<b>2001</b>	0.5	2.8	17.9	70.1	8.9	952,330
<b>2002</b>	0.8	5.0	31.2	59.3	3.7	862,357
<b>2003</b>	0.5	4.8	38.5	55.0	1.3	918,794
<b>2004</b>	0.4	5.1	44.3	49.3	0.7	807,219
<b>2005</b>	1.2	10.3	51.6	35.4	1.2	722,664
<b>2006</b>	1.5	13.5	54.6	29.5	1.0	754,408
<b>2007</b>	1.3	10.7	52.9	33.6	1.2	749,240
<b>2008</b>	2.0	14.2	53.1	29.2	1.2	679,323
<b>2009</b>	2.0	16.2	54.4	26.3	1.0	635,654
<b>2010</b>	1.1	14.2	56.1	27.3	1.1	649,539

## 1.2 HEIFERS

### 1.2.1 Carcase Weight

In 2010, average carcase weights increased when compared with 2009.

**Table 4      Heifer carcase weights (Kg Cold) 2001 to 2010**

<b>Year</b>	<b>Weight (kg)</b>
2001	266
2002	265
2003	272
2004	272
2005	286
2006	288
2007	291
2008	287
2009	287
2010	292

### 1.2.2 Conformation

There was a small increase in the percentage of Heifers grading U and R.

**Table 5      Heifer Conformation (%) 2001 to 2010**

	<b>E</b>	<b>U</b>	<b>R</b>	<b>O</b>	<b>P+</b>	<b>P</b>	<b>P-</b>	<b>Numbers</b>
<b>2001</b>	-	2.0	39.8	53.8	3.5	0.7	0.1	376,438
<b>2002</b>	0.1	3.7	49.6	43.5	2.7	0.4	0.1	418,129
<b>2003</b>	-	7.1	60.0	30.7	1.8	0.1	0.0	431,939
<b>2004</b>	-	7.0	58.5	32.1	2.0	0.2	0.1	409,093
<b>2005</b>	-	6.0	56.5	33.5	2.2	0.6	0.1	362,277
<b>2006</b>	-	5.7	54.7	36.0	2.5	0.7	0.2	417,783
<b>2007</b>	-	5.7	55.0	36.2	2.3	0.6	0.2	425,028
<b>2008</b>	-	5.2	53.1	38.4	2.3	0.7	0.3	379,839
<b>2009</b>	-	5.6	54.5	36.5	2.2	0.6	0.3	405,484
<b>2010</b>	-	7.4	55.1	34.8	1.9	0.6	0.1	431,459

## Beef Carcase Classification and Price Reporting - Annual Report 2010

### 1.2.3 Fatness

In 2010, the percentage of carcasses in fat class 3 increased with a corresponding reduction noted across all other classes.

**Table 6**                      **Heifer Fatness (%) 2001 to 2010**

	<b>1</b>	<b>2</b>	<b>3</b>	<b>4</b>	<b>5</b>	<b>Numbers</b>
<b>2001</b>	1.7	3.0	14.0	67.3	14.1	376,438
<b>2002</b>	1.4	4.4	24.8	61.7	7.6	418,129
<b>2003</b>	0.5	3.4	30.6	61.3	3.9	431,939
<b>2004</b>	0.9	4.8	34.6	57.2	2.4	409,093
<b>2005</b>	1.6	8.9	41.3	43.1	4.0	362,277
<b>2006</b>	1.7	9.6	42.6	42.1	3.8	417,783
<b>2007</b>	1.6	8.6	41.3	44.0	4.5	425,028
<b>2008</b>	1.8	10.3	43.2	40.4	4.3	379,839
<b>2009</b>	2.0	11.9	45.3	37.2	3.3	405,484
<b>2010</b>	1.6	11.4	48.2	35.9	2.8	431,459

## Beef Carcase Classification and Price Reporting - Annual Report 2010

### 1.3 COWS

#### 1.3.1 Carcase Weights

There was an increase in average carcase weights in 2010 compared to previous years.

**Table 7** Cow carcase weights (Kg Cold) 2001 to 2010

Year	Weight (kg)
2001	284
2002	284
2003	294
2004	295
2005	304
2006	301
2007	305
2008	301
2009	300
2010	308

#### 1.3.2 Conformation

The % carcase conformation in the U, R and O classes increased with a reduction in the percentages in the P classes.

**Table 8** Cow Conformation (%) 2001 to 2010

	E	U	R	O	P+	P	P-	Numbers
2001	-	0.3	6.1	47.5	31.5	10.5	4.1	365,978
2002	-	0.4	7.3	46	30.2	11.3	4.8	322,339
2003	-	0.6	10.5	46.4	29.0	9.4	3.8	335,000
2004	-	0.6	11.5	47.5	27.1	7.7	5.5	345,736
2005	-	0.7	10.9	46.5	22.6	11.0	6.4	341,947
2006	-	0.7	10.5	44.5	23.9	12	8	358,698
2007	-	0.2	11.2	43.5	22.9	12.0	9.2	356,789
2008	-	1.2	12.1	42.5	21.6	12	11	312,456
2009	-	1.3	13	41.6	21	13	11	329,568
2010	-	1.6	15.3	43.3	20.2	11.3	8.4	328,387



## Beef Carcase Classification and Price Reporting - Annual Report 2010

### 1.3.3 Fatness

There was a decrease in the proportion of cows falling into Fat Class 1 and 2 and a corresponding increase mainly in fat classes 4 and 5.

**Table 9**                      **Cow Fatness (%) 2001 to 2010**

	<b>1</b>	<b>2</b>	<b>3</b>	<b>4</b>	<b>5</b>	<b>Numbers</b>
<b>2001</b>	10.1	11.6	13.5	40.3	24.4	365,978
<b>2002</b>	12.9	12.3	16.8	39.4	18.5	322,339
<b>2003</b>	10.7	10.9	19.5	45.5	13.1	335,000
<b>2004</b>	9.2	10.6	24.3	47.4	8.4	345,736
<b>2005</b>	8.5	11.0	30.0	38.6	9.6	341,947
<b>2006</b>	9.7	13.7	33.9	34.1	8.5	358,698
<b>2007</b>	9.3	12.5	32.8	35.8	9.5	356,789
<b>2008</b>	11.3	13.7	33.2	33	8.9	312,456
<b>2009</b>	13.1	15.6	35.2	29.1	7.0	329, 568
<b>2010</b>	9.0	13.4	35.4	33.1	9.2	328,387

## 1.4 YOUNG BULLS

### 1.4.1 Carcase Weight

The average carcase weight of Young Bulls continued to decrease in 2010 when compared to previous 4 years (2006-2009).

**Table 10      Young Bull carcase weights (Kg Cold) 2001 to 2010**

<b>Year</b>	<b>Weight (kg)</b>
2001	339
2002	333
2003	327
2004	319
2005	350
2006	361
2007	368
2008	363
2009	362
2010	360

### 1.4.2 Conformation

There was an increase of approximately 30,000 Young Bulls slaughtered in 2010 when compared to 2009. There was an increase in the proportion of Young Bulls in conformation grade O and a decrease in the proportion in conformation grade R.

**Table 11      Young Bull Conformation (%) 2001 to 2010**

	<b>E</b>	<b>U</b>	<b>R</b>	<b>O</b>	<b>P+</b>	<b>P</b>	<b>P-</b>	<b>Numbers</b>
<b>2001</b>	0.3	23.9	54.6	17.7	3.2	0.2	-	65,491
<b>2002</b>	0.9	33.9	42.6	17.7	4.4	0.4	0.1	39,609
<b>2003</b>	0.7	41.5	39.5	15.0	3.1	0.3	-	53,991
<b>2004</b>	0.6	33.3	40.7	21.0	4.1	0.2	0.1	94,417
<b>2005</b>	1.0	38.4	39.1	18.1	2.4	0.4	0.1	94,119
<b>2006</b>	1.1	40.5	39.0	16.5	2.2	0.5	0.0	78,998
<b>2007</b>	0.9	43.2	42.0	12.4	1.1	0.2	-	105,431
<b>2008</b>	0.7	39.7	44.3	13.8	1.3	0.2	-	107,404
<b>2009</b>	0.9	38.9	43	15.3	1.5	0.3	0.1	120,227
<b>2010</b>	1.0	39.3	37.2	20.1	2.1	0.5	0.1	149,191

### 1.4.3 Fatness

The % of young bulls in 2010 falling into fat classes 1 to 4 was broadly similar to that in 2009.

**Table 12      Young Bull Fatness (%) 2001 to 2010**

	<b>1</b>	<b>2</b>	<b>3</b>	<b>4</b>	<b>5</b>	<b>Numbers</b>
<b>2001</b>	4.3	22.4	41.6	31.2	0.4	65,491
<b>2002</b>	6.5	24.4	47.3	21.6	0.1	39,609
<b>2003</b>	4.2	23.3	56	16.6	-	53,991
<b>2004</b>	3.3	26.9	58.9	10.9	-	94,417
<b>2005</b>	5.4	42.5	46.3	5.3	-	94,119
<b>2006</b>	5.1	41.7	48.2	4.8	-	78,998
<b>2007</b>	3.6	39.9	51.1	5.2	-	105,431
<b>2008</b>	4.2	43.1	48.4	4.3	-	107,404
<b>2009</b>	5.2	45.8	45.5	3.5	-	120,227
<b>2010</b>	4.5	45.9	46.3	3.6	-	149,191

## 2. ANALYSIS OF PRICE REPORT DATA

### 2.1 Steers

The base R4 price in 2010 was higher than 2009 and the premium paid on U carcasses increased in 2010 compared to 2009.

The prices for individual conformation and fat classes are shown at Annex III.

**Table 13**     **Steer Price Differentials from R4 - cent/kg ex.VAT**

Classes with less than 1% have been omitted

2010	E	U	R	O	P+
1	-	-	-	-	-
2	-	10.5	-1.8	-24.2	-37.5
3	-	11.9	0.5	-16.9	-31.5
4l	-	-	0.2	-15.7	-
4	-	-	289.6	-17.3	-
4h	-	-	-5.9	-21.2	-
5	-	-	-	-	-

2009	E	U	R	O	P+
1	-	-	-	-	-
2	-	7.8	-2.2	-14.6	-29.5
3	-	8.3	-0.6	-12.8	-26.5
4l	-	-	0.3	-12.4	-
4	-	-	284.7	-13	-
4h	-	-	-0.6	-13.6	-
5	-	-	-	-	-

## 2.2 Heifers

The base R4 price was higher in 2010 when compared with 2009 and the penalty for O and P grade increased when compared with 2009.

The prices for individual conformation and fat classes for 2009 and 2010 are shown at Annex III.

**Table 14 Heifer Price Differentials from R4 – cent/kg ex.VAT**

Classes with less than 1% have been omitted

2010	E	U	R	O	P+
1	-	-	-	-	-
2	-	-	-3.2	-27.3	-
3	-	13.6	0.5	-18.4	-37.8
4L	-	-	0.2	-17.8	-
4	-	-	298	-20.1	-
4H	-	-	-7.9	-25	-
5	-	-	-25.1	-	-

2009	E	U	R	O	P+
1	-	-	-	-	-
2	-	-	-4.5	-20.3	-
3	-	6.3	-1.2	-15.3	-32.6
4L	-	-	0.3	-13.6	-
4	-	-	293.3	-14.6	-
4H	-	-	-0.9	-15.3	-
5	-	-	-4.2	-19.1	-

## Beef Carcase Classification and Price Reporting - Annual Report 2010

### 2.3 Cows

The base O4 price was higher in 2010 than in 2009. A higher premium was paid for R grade cow carcasses, while the level of penalty on other grades varied when compared to 2009.

The prices for individual conformation and fat classes are shown at Annex III.

**Table 15**      **Cow Price Differentials from O4 - cent/kg ex.VAT**  
Classes with less than 1% have been omitted

2010	R	O	P+	P	P-
1	-	-	-	-96.4	-101.2
2	-	-8.8	-23.4	-36.6	-48
3	11.6	-1.7	-7.3	-11.9	-17.3
4L	10.9	-0.7	-5	-	-
4	10.5	244.3	-4.8	-	-
4H	10.1	-0.1	-	-	-
5	9	-0.3	-	-	-

2009	R	O	P+	P	P-
1		-	-83.8	-97.6	-99.7
2	-	-13.4	-26.3	-40.6	-50.6
3	8.6	-3.2	-5.9	-9.7	-15.2
4L	9.9	-0.2	-0.8	-	
4	8.8	236.4	-0.5	-	
4H	9.4	1.1			
5	7.3	1.5	-		

### 3. ANNUAL SLAUGHTERINGS, OUTPUT AND EXPORTS

#### 3.1 Numbers Slaughtered at export approved plants

*Note: List of export approved factories in Annex IV*

Total slaughterings at export-approved plants increased in 2010 compared to 2009. The increase was distributed across each category except cows, where the numbers slaughtered decreased.

**Table 16      Numbers Slaughtered at Beef Export Approved Plants: 2002 - 2010**

	<b>Young Bull</b>	<b>Old Bull</b>	<b>Steer</b>	<b>Heifer</b>	<b>Cow</b>	<b>Calf (M)</b>	<b>Calf (F)</b>	<b>Total</b>
<b>2002</b>	39,781	18,043	866,359	421,479	323,210	2,341	3,575	<b>1,674,788</b>
<b>2003</b>	54,402	18,957	920,452	433,252	335,015	1,365	2,497	<b>1,765,940</b>
<b>2004</b>	93,552	19,753	858,992	405,301	342,876	819	1,395	<b>1,722,688</b>
<b>2005</b>	94,119	21,198	785,438	362,320	341,947	508	702	<b>1,606,233</b>
<b>2006</b>	79,002	25,105	811,204	417,978	358,296	200	189	<b>1,691,973</b>
<b>2007</b>	105,431	25,039	779,627	425,028	356,789	200	245	<b>1,692,359</b>
<b>2008</b>	108,882	29,592	706,336	415,059	330,192	797	326	<b>1,591,174</b>
<b>2009</b>	120,227	30,389	635,654	405,484	329,568	3072	300	<b>1,524,694</b>
<b>2010</b>	149,686	41,741	663,506	443,866	337,294	6,356	143	<b>1,642,592</b>

## Beef Carcase Classification and Price Reporting - Annual Report 2010

---

**Table 17      Slaughterings at Domestic Abattoirs\***

There was a slight decrease in the total number slaughtered at the domestic abattoirs in 2010 compared to 2009.

	<b>2004</b>	<b>2005</b>	<b>2006</b>	<b>2007</b>	<b>2008</b>	<b>2009</b>	<b>2010</b>
<b>Young Bull</b>	835	568	697	622	941	670	598
<b>Steers</b>	3,540	1,852	1,798	1842	1,983	1,698	1,676
<b>Heifers</b>	84,057	76,351	78,923	76,509	70,857	73,991	73,417
<b>Cows</b>	431	42	5	0	18	6	6
<b>Total No.</b>	<b>88,863</b>	<b>78,813</b>	<b>81,423</b>	<b>78,973</b>	<b>73,799</b>	<b>76,365</b>	<b>75,697</b>



## 3.2 Seasonality of Slaughterings

Overall, the distribution of the annual slaughtering for all categories by quarter was quite evenly balanced when averaged out. However, a notable variation in seasonality of slaughter continues to be a feature within categories, especially for steers and young bulls.

**Table 17 Seasonality of slaughterings (%) by Category 2001 to 2010**

### **Steer**

Quarter	'01	'02	'03	'04	'05	'06	'07	'08	'09	'10
1 <sup>st</sup>	26	23	23	23	21	24	23	22	21	22
2 <sup>nd</sup>	24	23	23	20	23	23	22	22	22	22
3 <sup>rd</sup>	24	28	29	29	28	27	27	30	28	28
4 <sup>th</sup>	26	26	25	28	28	26	28	26	29	28

### **Cow**

Quarter	'01	'02	'03	'04	'05	'06	'07	'08	'09	'10
1 <sup>st</sup>	18	23	21	20	17	21	24	19	20	23
2 <sup>nd</sup>	17	19	22	20	24	24	24	24	24	26
3 <sup>rd</sup>	29	27	27	27	29	27	26	29	29	26
4 <sup>th</sup>	36	31	30	33	30	28	27	28	27	25

### **Young Bulls**

Quarter	'01	'02	'03	'04	'05	'06	'07	'08	'09	'10
1 <sup>st</sup>	20	26	20	19	23	30	31	36	32	32
2 <sup>nd</sup>	41	37	31	35	34	30	30	27	27	25
3 <sup>rd</sup>	22	21	22	22	22	20	18	14	20	19
4 <sup>th</sup>	17	16	27	24	21	20	21	23	21	24

### **Heifer**

Quarter	'01	'02	'03	'04	'05	'06	'07	'08	'09	'10
1 <sup>st</sup>	27	26	27	27	24	28	28	28	25	28
2 <sup>nd</sup>	22	20	21	19	23	23	23	24	23	25
3 <sup>rd</sup>	22	22	22	22	23	23	22	23	26	23
4 <sup>th</sup>	29	32	30	32	30	26	27	25	26	24

### **Overall**

Quarter	'01	'02	'03	'04	'05	'06	'07	'08	'09	'10
1 <sup>st</sup>	24	24	23	23	21	25	25	24	22	25
2 <sup>nd</sup>	23	22	23	21	23	24	23	24	23	24
3 <sup>rd</sup>	25	26	27	26	27	25	25	27	27	25
4 <sup>th</sup>	28	28	27	30	29	26	27	26	28	26

## 3.3 Live Exports

There was a significant increase in all Live exports in 2010 compared with 2009.

**Table 18**

### **Live Exports of Calves and Weanlings from Ireland : 2009 - 2010**

No breakdown by country is available from 2008 onwards.

	<b>Calf (0-3)Mts</b>		<b>Total</b>	<b>Weanling (3-12mts)</b>		<b>Total</b>
	<b>Male</b>	<b>Female</b>		<b>Male</b>	<b>Female</b>	
<b>2009</b>	114,345	9,106	123,451	45,125	17,438	62,563
<b>2010</b>	149,586	9,410	<b>158,996</b>	55,908	12,678	<b>68,586</b>

### **Live Exports of Calves from Ireland 2001 - 2008**

<b>Year</b>	<b>2001</b>	<b>2002</b>	<b>2003</b>	<b>2004</b>	<b>2005</b>	<b>2006</b>	<b>2007</b>	<b>2008</b>
<b>France</b>	3,672	52	0	274	2464	10,449	9,678	2,539
<b>Holland</b>	1,035	4,388	33,714	30,201	43174	51,153	40,904	31,325
<b>Belgium</b>	0	0	1,499	1,250	1093	16,618	7,485	10,101
<b>Italy</b>	393	1075	1,313	1,746	524	3,285	768	557
<b>Spain</b>	2,857	12,126	26,462	3,330	14590	22,914	27,438	16,687
<b>Other</b>	0	165	39	185	177	126	1,328	1,635
<b>Total</b>	<b>7,957</b>	<b>17,806</b>	<b>63,027</b>	<b>36,986</b>	<b>62,022</b>	<b>104,545</b>	<b>87,601</b>	<b>62,844</b>

**Table 19**

**Live Exports of Stores and Finished Cattle from Ireland : 2009 – 2010**

	<b>Stores (12-21mts)</b>			<b>Finished Cattle (Over 21mts)</b>		
	<b>Male</b>	<b>Female</b>		<b>Male</b>	<b>Female</b>	<b>Total</b>
<b>2009</b>	28,575	19,064	47,639	28,927	23,704	52,631
<b>2010</b>	35,710	15,813	<b>51,523</b>	35,966	23,895	<b>59,861</b>

**Live Cattle Exports from Ireland (excluding calves)**

<b>Year</b>	<b>2001</b>	<b>2002</b>	<b>2003</b>	<b>2004</b>	<b>2005</b>	<b>2006</b>	<b>2007</b>	<b>2008</b>
<b>N. Ireland</b>	48,282	26,208	39,208	45,809	26362	27,162	33,488	31,884
<b>GB</b>	0	73	554	1,207	1196	1,248	1,252	1,962
<b>EU (excl UK)</b>	32,212	53,599	77,891	35,790	85793	116,552	84,942	61,366
<b>3<sup>rd</sup> country</b>	10,361	27,900	36,762	11,687	9874	424	589	760
<b>Total</b>	<b>90,855</b>	<b>107,780</b>	<b>154,416</b>	<b>94,493</b>	<b>123,225</b>	<b>145,386</b>	<b>120,271</b>	<b>95,972</b>

### 4. BEEF CARCASE CLASSIFICATION and PRICE REPORTING INSPECTIONS

#### 4.1 *Classification Checks*

In 2010 there were a total of 1,636,448 carcasses of adult cattle classified. There were a total of 449 control visits conducted in these plants during the year and 41,211 carcasses were checked for conformation and fat during these visits.

#### 4.2 *Classification method*

	Manual plants	Machine plants	Total
% Adult carcasses classified	2.5	97.5	100

#### 4.3 *Price reporting*

- (a) Commission Regulation (EC) No 1249/2008 lays down detailed rules as regards the recording of market prices of adult bovine animals, on the basis of the Community scale for the classification of carcasses

In 2010, 25 factories reported prices to The Department – A list of these factories is given in Annex V

In 2010, staff of the Division carried out 51 audits of these factories examining details of payments / returns to producers and determining the accuracy of weekly returns made to DAFF. During the course of each audit, authorised officers checked the following details:

- a.weights,
- b.classification,
- c.prices
- d.origin

The incidence of non -compliance detected was low. The main areas of non- compliance identified included:

- Supplementary payments not reported to the Department
- Differing sex category reported to the Department
- Category changes not initialled on Classification Sheets

### 5. PRICE REPORTING BY SUBCLASSES

In 2009 / 2010, factories commenced reporting classification results to the Department to include subclasses. It was not until mid 2010 that this information was consistently reported by all factories.

Information on Prices paid by individual factories for steers, cows and heifers is uploaded weekly to the Department website at the following web address:

<http://www.agriculture.gov.ie/farmingsectors/beef/beeffactorypricesweeklyreports/2011/>

In addition, the Department publishes on it's website, the numbers of carcasses in each sub class and the average weights of carcasses in each subclass. These may be found at the same web address:

<http://www.agriculture.gov.ie/farmingsectors/beef/beeffactorypricesweeklyreports/2011/>

The Annexes at the back of this Annual Report give a detailed breakdown on the following:

Annex VI: National Average Prices for Heifers and Steers, Young Bulls and Cows for the period 01/07/2010 – 31/12/2010 and for each month from July to December for Heifers and Steers only.

Annex VII: Average Weights in each subclass for Young Bulls, Steers, Heifers and Cows for the period 01/07/2010 – 31/12/2010

Annex VIII: Numbers in each category Young Bulls, Steers, Heifers and Cows for the period 01/07/2010 – 31/12/2010

## Cold Carcase Weights (kg) 2009 & 2010

(Classes which make up less than 1% of the kill have been omitted. *Data taken from price reporting factories only*)

### STEERS

	E		U		R		O		P+	
	2010	2009	2010	2009	2010	2009	2010	2009	2010	2009
<b>1</b>	-	-	-	-	-	-	-	-	-	-
<b>2</b>	-	-	405	402	352	350	299	297	286	284
<b>3</b>	-	-	424	423	373	371	325	323	315	314
<b>4L</b>	-	-	-	-	384	384	343	342	-	-
<b>4</b>	-	-	-	-	390	390	353	352	-	-
<b>4H</b>	-	-	-	-	397	397	364	363	-	-
<b>5</b>	-	-	-	-	-	-	-	-	-	-

### HEIFERS

	E		U		R		O		P+	
	2010	2009	2010	2009	2010	2009	2010	2009	2010	2009
<b>1</b>	-	-	-	-	-	-	-	-	-	-
<b>2</b>	-	-	334	-	288	284	244	240	-	-
<b>3</b>	-	-	347	346	301	298	259	256	257	252
<b>4L</b>	-	-	359	-	308	307	271	268	-	-
<b>4</b>	-	-	-	-	312	312	278	276	-	-
<b>4H</b>	-	-	-	-	317	318	286	285	-	-
<b>5</b>	-	-	-	-	327	328	298	297	-	-

### COWS

	R		O		P+		P		P-	
	2010	2009	2010	2009	2010	2009	2010	2009	2010	2009
<b>1</b>	-	-	-	-	236	235	224	222	222	217
<b>2</b>	-	-	290	288	272	269	266	262	263	257
<b>3</b>	360	360	306	304	293	290	290	287	287	281
<b>4L</b>	365	367	315	315	304	304	-	-	-	-
<b>4</b>	370	369	320	319	309	307	-	-	-	-
<b>4H</b>	374	374	325	325	313	313	-	-	-	-
<b>5</b>	384	379	334	333	-	-	-	-	-	-

### Carcase Classification Results (%) 2009/10

(Classes with less than 0.5% are omitted. Classes with 0.5% or more have been rounded up to 1%. The remainder have been rounded to the nearest %. Data taken from price reporting factories only.)

#### STEERS

Steer Kill 2010: 663,506

2009: 635,654

	<b>U</b>		<b>R</b>		<b>O</b>		<b>P+</b>		<b>P</b>		<b>P-</b>	
	2010	2009	2010	2009	2010	2009	2010	2009	2010	2009	2010	2009
<b>1</b>	-	-	0	1	1	1	-	-	-	-	-	-
<b>2</b>	2	2	5	6	6	7	2	2	1	1	-	-
<b>3</b>	5	4	23	23	24	24	3	3	1	1	-	-
<b>4L</b>	1	1	7	7	7	6	-	-	-	-	-	-
<b>4</b>	1	1	5	5	4	3	-	-	-	-	-	-
<b>4H</b>	-	-	2	2	2	1	-	-	-	-	-	-
<b>5</b>	-	-	1	1	-	-	-	-	-	-	-	-

#### HEIFERS

Heifer Kill: 2010: 443,866

2009: 405,484

	<b>E</b>		<b>U</b>		<b>R</b>		<b>O</b>		<b>P+</b>	
	2010	2009	2010	2009	2010	2009	2010	2009	2010	2009
<b>1</b>	-	-	-	-	1	1	1	1	-	-
<b>2</b>	-	-	1	1	6	6	4	4	1	1
<b>3</b>	-	-	4	3	26	24	18	18	1	1
<b>4L</b>	-	-	1	1	10	10	6	7	-	-
<b>4</b>	-	-	1	1	7	7	4	4	-	-
<b>4H</b>	-	-	-	-	4	5	2	2	-	-
<b>5</b>	-	-	-	-	2	2	1	1	-	-

## Beef Carcase Classification and Price Reporting - Annual Report 2010

---

### COWS

Cow Kill: 2010: 337,294  
2009: 329,568

	<b>R</b>		<b>O</b>		<b>P+</b>		<b>P</b>		<b>P-</b>	
	2010	2009	2010	2009	2010	2009	2010	2009	2010	2009
<b>1</b>	-	-	1	1	1	2	2	3	5	7
<b>2</b>	1	1	3	4	4	5	3	4	2	2
<b>3</b>	4	4	16	16	10	10	4	4	1	1
<b>4L</b>	2	2	7	7	3	3	1	1	-	-
<b>4</b>	3	2	7	6	2	2	-		-	-
<b>4H</b>	2	2	5	4	1	1	-	-	-	-
<b>5</b>	3	2	5	4	1	1	-	-	-	-

### YOUNG BULLS

Young Bull Kill: 2010: 149,686  
2009: 120,227

	<b>E</b>		<b>U</b>		<b>R</b>		<b>O</b>		<b>P+</b>	
	2010	2009	2010	2009	2010	2009	2010	2009	2010	2009
<b>1</b>	-	-	1	1	1	2	2	2	1	-
<b>2</b>	1		17	17	16	19	12	9	1	1
<b>3</b>	-	-	21	20	19	21	6	5	-	-
<b>4L</b>	-	-	1		1		-	-	-	-
<b>4</b>	-	-	-		-	-	-	-	-	-
<b>4H</b>	-	-	-	-	-	-	-	-	-	-
<b>5</b>	-	-	-	-	-	-	-	-	-	-



# Prices for Individual Conformation and Fat Classes (cent/kg Ex VAT)

*(Classes with less than 1% have been omitted)*

## STEERS

	<b>E</b>		<b>U</b>		<b>R</b>		<b>O</b>		<b>P+</b>	
	<b>2010</b>	2009	<b>2010</b>	2009	<b>2010</b>	2009	<b>2010</b>	2009	<b>2010</b>	2009
<b>1</b>	-	-	-	-	-	-	234.5	-	-	-
<b>2</b>	-	-	300.1	292.5	287.8	282.5	265.4	270.1	252.1	255.2
<b>3</b>	-	-	301.5	293	290.1	284.1	272.7	271.9	258.1	258.2
<b>4L</b>	-	-	-	-	289.8	285	273.9	272.3	-	-
<b>4</b>	-	-	-	-	289.6	284.7	272.3	271.7	-	-
<b>4H</b>	-	-	-	-	283.7	284.1	268.4	271.1	-	-
<b>5</b>	-	-	-	-	-	-	-	-	-	-

## HEIFERS

	<b>E</b>		<b>U</b>		<b>R</b>		<b>O</b>		<b>P+</b>	
	<b>2010</b>	2009	<b>2010</b>	2009	<b>2010</b>	2009	<b>2010</b>	2009	<b>2010</b>	2009
<b>1</b>	-	-	-	-	-	-	-	-	-	-
<b>2</b>	-	-	307.6	-	294.8	288.8	270.7	273	-	-
<b>3</b>	-	-	311.6	299.6	298.5	292.1	279.6	278	260.2	260.7
<b>4L</b>	-	-	310.9	-	298.2	293.6	280.2	279.7	-	-
<b>4</b>	-	-	-	-	298.0	293.3	277.9	278.7	-	-
<b>4H</b>	-	-	-	-	290.1	292.4	273.0	278	-	-
<b>5</b>	-	-	-	-	272.9	289.1	256.5	274.2	-	-

## COWS

	<b>R</b>		<b>O</b>		<b>P+</b>		<b>P</b>		<b>P-</b>	
	<b>2010</b>	2009	<b>2010</b>	2009	<b>2010</b>	2009	<b>2010</b>	2009	<b>2010</b>	2009
<b>1</b>	-	-	-	-	163.3	152.6	147.9	138.8	143.1	136.7
<b>2</b>	-	-	235.5	223	220.9	210.1	207.7	195.8	196.3	185.8
<b>3</b>	255.9	245	242.6	233.2	237	230.5	232.4	226.7	227.0	221.2
<b>4L</b>	255.2	246.3	243.6	236.2	239.3	235.6	-	-	-	-
<b>4</b>	254.8	245.2	244.3	236.4	239.5	235.9	-	-	-	-
<b>4H</b>	254.4	245.8	244.2	237.5	239.4	237.7	-	-	-	-
<b>5</b>	253.3	243.7	244	237.9	-	-	-	-	-	-

# Beef Carcase Classification and Price Reporting - Annual Report 2010

## Annex IV

### Beef export approved factories 2010

		Mechanical Classification	Price Reporting
1.	A.I.B.P. BANDON	✓	✓
2.	A.I.B.P. CAHIR	✓	✓
3.	A.I.B.P. CLONES	✓	✓
4.	A.I.B.P. NENAGH	✓	✓
5.	A.I.B.P. RATHKEALE	✓	✓
6.	A.I.B.P. WATERFORD	✓	✓
7.	ASHBOURNE MEATS ROSCREA	✓	✓
8.	B&F THOMASTOWN	Manual Classification	Not Reporting Prices
9.	BALLON MEATS	Manual Classification	✓
10.	CHARLEVILLE FOODS	✓	✓
11.	D.M.P. CARRIGANS DONEGAL	✓	✓
12.	DAWN BALLYHAUNIS	✓	✓
13.	DAWN MEATS GRANNAGH	✓	✓
14.	DUNBIA, SLANE	✓	✓
15.	EURO FARM FOODS, DULEEK,	✓	✓
16.	JENNINGS BALLINROBE	✓	✓
17.	KEPAK ATHLEAGUE	✓	✓
18.	KEPAK CLONEE	✓	✓
19.	KEPAK, KILBEGGAN	✓	✓
20.	KEPAK WATERGRASSHILL CORK	✓	✓
21.	KILDARE CHILLING COMPANY	✓	✓
22.	LIFFEY MEATS BALLYJAMESDUFF	✓	✓
23.	LIFFEY MEATS, HACKETSTOWN	Manual Classification	✓
24.	McGAVIGAN MEATS, LIFFORD	Manual Classification	Not Reporting Prices
25.	MEADOW MEATS, RATHDOWNEY	✓	✓
26.	MOYVALLEY MEATS,BROADFORD	✓	✓
27.	SLANEY MEATS BUNCLODY	✓	✓
28.	DUNLEAVY'S BALLINA (late 2010)	Manual Classification	Not Reporting Prices

✓ = Yes

Annex V

Week starting  
Week ending  
Category

01/07/2010
31/12/2010
E

Price cent/kg including VAT

National Average

	1-	1=	1+	2-	2=	2+	3-	3=	3+	4-	4=	4+	5-	5=	5+
E+	0	0	0	0	0	0	0	0	0	0	0	0	0	0	0
E=	314	269	319	305	333	342	358	334	358	339	0	0	0	0	0
E-	289	302	326	337	329	343	338	341	342	352	354	318	358	350	0
U+	298	314	321	328	333	339	342	344	344	342	342	335	313	295	303
U=	300	297	311	323	326	333	334	337	338	336	337	323	304	306	291
U-	287	299	309	316	322	328	329	330	331	330	329	320	302	300	278
R+	263	296	299	310	315	321	322	322	323	322	322	314	296	292	278
R=	273	292	297	306	309	314	315	316	316	316	315	307	289	287	282
R-	262	277	289	303	308	313	313	314	314	314	313	305	287	287	283
O+	228	257	264	287	292	296	302	302	302	301	301	293	275	277	263
O=	198	242	258	280	286	291	296	297	296	296	291	287	269	265	261
O-	185	201	236	266	277	283	289	289	289	287	283	281	264	258	264
P+	149	180	203	239	258	269	275	276	275	276	271	271	257	253	246
P=	142	166	183	236	245	260	264	269	267	269	268	269	266	0	0
P-	135	156	182	225	231	253	254	254	250	256	256	246	0	0	0

Week starting  
Week ending  
Category

01/07/2010
31/07/2010
E

Price cent/kg including VAT

National Average

	1-	1=	1+	2-	2=	2+	3-	3=	3+	4-	4=	4+	5-	5=	5+
E+	0	0	0	0	0	0	0	0	0	0	0	0	0	0	0
E=	0	0	0	0	349	0	0	0	0	0	0	0	0	0	0
E-	310	0	0	348	350	374	0	351	342	330	0	0	0	0	0
U+	257	319	324	331	340	340	339	344	340	348	345	332	0	0	308
U=	317	307	313	320	328	336	338	337	339	337	339	321	301	306	0
U-	265	291	313	319	325	332	330	331	332	330	329	321	299	299	0
R+	267	282	301	311	317	326	326	325	326	324	323	314	297	296	277
R=	240	291	295	311	311	319	319	318	318	318	317	308	290	288	288
R-	234	289	296	306	312	316	317	317	317	316	317	307	290	291	283
O+	220	260	272	291	294	298	305	304	304	304	303	294	277	274	280
O=	155	262	243	278	289	294	299	300	300	299	293	288	271	269	263
O-	123	200	201	269	282	289	294	291	292	291	285	282	263	263	260
P+	133	171	199	241	260	273	277	274	275	274	270	275	255	0	0
P=	146	162	167	239	221	265	268	271	272	272	266	269	0	0	0
P-	127	110	122	260	226	219	259	0	280	271	0	246	0	0	0

## Beef Carcase Classification and Price Reporting - Annual Report 2010

Week starting	<b>01/08/2010</b>
Week ending	<b>31/08/2010</b>
Category	<b>E</b>

**Price cent/kg including VAT**

<b>National Average</b>		<b>1-</b>	<b>1=</b>	<b>1+</b>	<b>2-</b>	<b>2=</b>	<b>2+</b>	<b>3-</b>	<b>3=</b>	<b>3+</b>	<b>4-</b>	<b>4=</b>	<b>4+</b>	<b>5-</b>	<b>5=</b>	<b>5+</b>
	<b>E+</b>	0	0	0	0	0	0	0	0	0	0	0	0	0	0	0
	<b>E=</b>	320	0	0	297	0	0	355	330	0	0	0	0	0	0	0
	<b>E-</b>	0	0	0	0	346	0	348	0	346	0	0	0	0	0	0
	<b>U+</b>	307	314	322	332	333	346	341	344	345	340	350	341	315	0	310
	<b>U=</b>	0	316	309	329	328	339	341	340	339	341	336	331	317	0	280
	<b>U-</b>	297	317	313	324	327	333	332	333	335	334	336	327	312	310	290
	<b>R+</b>	261	307	302	316	320	326	328	327	327	327	327	319	301	296	285
	<b>R=</b>	265	288	301	312	315	321	321	320	321	321	321	312	296	294	290
	<b>R-</b>	265	276	283	302	313	318	318	319	319	320	320	310	293	292	286
	<b>O+</b>	185	271	257	288	297	302	307	308	308	307	306	300	282	281	282
	<b>O=</b>	195	222	272	284	291	298	301	302	301	301	296	293	277	272	267
	<b>O-</b>	194	218	229	266	283	289	293	294	293	293	289	287	273	286	274
	<b>P+</b>	128	157	180	218	255	271	282	281	282	282	277	278	272	0	0
	<b>P=</b>	145	133	130	222	248	263	274	274	269	266	274	270	0	0	0
	<b>P-</b>	139	151	157	210	213	248	263	272	266	0	268	0	0	0	0

## Beef Carcase Classification and Price Reporting - Annual Report 2010

Week starting  
Week ending  
Category

<b>01/09/2010</b>
<b>30/09/2010</b>
<b>E</b>

Price cent/kg including VAT

**National Average**

	<b>1-</b>	<b>1=</b>	<b>1+</b>	<b>2-</b>	<b>2=</b>	<b>2+</b>	<b>3-</b>	<b>3=</b>	<b>3+</b>	<b>4-</b>	<b>4=</b>	<b>4+</b>	<b>5-</b>	<b>5=</b>	<b>5+</b>
<b>E+</b>	0	0	0	0	0	0	0	0	0	0	0	0	0	0	0
<b>E=</b>	306	0	330	0	0	336	0	0	0	0	0	0	0	0	0
<b>E-</b>	300	0	319	330	318	0	348	350	350	0	0	0	0	0	0
<b>U+</b>	0	269	305	327	325	338	337	335	338	349	330	326	0	0	0
<b>U=</b>	299	294	311	320	322	325	327	334	334	326	336	321	304	291	0
<b>U-</b>	282	303	304	306	317	325	325	325	327	327	325	315	297	292	0
<b>R+</b>	269	290	300	308	312	317	319	319	319	318	316	306	289	285	273
<b>R=</b>	251	286	295	302	305	310	313	312	312	311	309	301	282	282	277
<b>R-</b>	246	277	292	300	304	310	309	310	310	309	308	299	282	281	276
<b>O+</b>	208	244	258	285	289	293	299	298	298	296	296	288	270	268	268
<b>O=</b>	172	246	261	272	281	286	291	291	292	290	285	282	256	263	259
<b>O-</b>	185	222	232	268	275	278	284	284	283	283	277	275	254	231	0
<b>P+</b>	144	189	208	238	260	264	271	272	272	272	266	261	255	0	0
<b>P=</b>	145	193	197	215	241	254	266	256	261	264	247	273	0	0	0
<b>P-</b>	130	175	167	202	256	253	232	0	252	0	246	0	0	0	0

## Beef Carcase Classification and Price Reporting - Annual Report 2010

Week starting  
Week ending  
Category

<b>01/10/2010</b>
<b>31/10/2010</b>
<b>E</b>

**Price cent/kg including VAT**

**National Average**

	<b>1-</b>	<b>1=</b>	<b>1+</b>	<b>2-</b>	<b>2=</b>	<b>2+</b>	<b>3-</b>	<b>3=</b>	<b>3+</b>	<b>4-</b>	<b>4=</b>	<b>4+</b>	<b>5-</b>	<b>5=</b>	<b>5+</b>
<b>E+</b>	0	0	0	0	0	0	0	0	0	0	0	0	0	0	0
<b>E=</b>	0	168	310	0	0	0	0	338	0	0	0	0	0	0	0
<b>E-</b>	224	291	323	0	325	319	326	313	0	0	0	318	0	0	0
<b>U+</b>	301	309	306	318	328	326	333	331	334	325	327	316	0	0	297
<b>U=</b>	302	292	306	315	321	326	326	327	330	329	328	320	280	294	0
<b>U-</b>	284	294	303	309	314	321	321	322	322	322	320	308	277	285	0
<b>R+</b>	245	283	294	303	309	313	314	313	313	314	313	302	286	288	273
<b>R=</b>	275	293	293	300	303	306	306	307	307	306	306	297	281	276	265
<b>R-</b>	276	265	287	296	300	305	306	306	306	305	303	296	278	276	285
<b>O+</b>	248	260	273	284	285	289	294	293	293	293	292	284	268	268	250
<b>O=</b>	230	241	251	276	281	285	289	289	289	288	283	278	262	263	238
<b>O-</b>	199	209	244	264	272	277	284	283	284	282	277	279	267	250	243
<b>P+</b>	180	145	191	250	258	266	269	271	272	265	268	266	254	241	246
<b>P=</b>	128	165	167	242	255	258	252	271	263	261	273	0	0	0	0
<b>P-</b>	129	159	199	213	221	252	168	258	224	0	0	0	0	0	0

## Beef Carcase Classification and Price Reporting - Annual Report 2010

Week starting	<b>01/11/2010</b>
Week ending	<b>30/11/2010</b>
Category	<b>E</b>

**Price cent/kg including VAT**

**National Average**

	<b>1-</b>	<b>1=</b>	<b>1+</b>	<b>2-</b>	<b>2=</b>	<b>2+</b>	<b>3-</b>	<b>3=</b>	<b>3+</b>	<b>4-</b>	<b>4=</b>	<b>4+</b>	<b>5-</b>	<b>5=</b>	<b>5+</b>
<b>E+</b>	0	0	0	0	0	0	0	0	0	0	0	0	0	0	0
<b>E=</b>	0	310	0	290	0	0	0	0	0	339	0	0	0	0	0
<b>E-</b>	0	0	0	0	0	324	320	331	338	372	0	0	0	0	0
<b>U+</b>	294	327	324	320	328	335	336	339	332	331	318	319	309	295	0
<b>U=</b>	230	301	308	315	321	327	326	328	326	322	328	319	296	283	280
<b>U-</b>	283	290	305	314	315	321	322	320	322	321	319	312	293	287	264
<b>R+</b>	265	302	291	303	308	312	314	314	315	314	313	305	290	287	272
<b>R=</b>	269	285	291	299	304	307	308	308	308	308	307	299	283	282	270
<b>R-</b>	263	272	281	297	300	306	306	307	306	306	306	298	282	282	268
<b>O+</b>	223	244	249	277	286	290	294	294	294	294	292	285	269	272	173
<b>O=</b>	156	248	257	273	279	284	289	290	288	288	282	279	265	249	257
<b>O-</b>	178	184	242	257	266	279	280	282	281	279	275	273	257	252	0
<b>P+</b>	147	192	206	246	251	262	269	271	269	271	264	264	241	250	0
<b>P=</b>	166	185	214	236	246	252	257	261	260	275	272	264	0	0	0
<b>P-</b>	127	150	211	234	266	251	257	241	239	240	0	0	0	0	0



## Beef Carcase Classification and Price Reporting - Annual Report 2010

Week starting	01/12/2010	Price cent/kg including VAT														
Week ending	31/12/2010															
Category	E															
National Average		1-	1=	1+	2-	2=	2+	3-	3=	3+	4-	4=	4+	5-	5=	5+
	E+	0	0	0	0	0	0	0	0	0	0	0	0	0	0	0
	E=	0	0	0	334	322	345	360	0	358	0	0	0	0	0	0
	E-	0	331	336	333	333	347	340	356	344	0	354	0	358	350	0
	U+	332	325	347	336	343	352	357	357	358	353	356	346	0	0	0
	U=	325	238	323	339	342	349	347	348	349	349	350	325	308	327	304
	U-	327	322	323	339	337	340	341	343	345	345	341	333	320	319	324
	R+	0	320	314	325	332	337	336	337	337	337	335	329	313	303	309
	R=	306	307	310	321	326	329	327	331	328	328	328	321	306	300	302
	R-	300	323	310	324	324	328	326	328	328	328	326	319	298	304	298
	O+	261	272	269	302	309	313	317	319	316	315	316	306	284	296	298
	O=	246	243	267	298	300	304	309	311	310	311	304	300	283	276	278
	O-	223	206	267	273	290	291	301	302	302	300	296	294	276	284	302
	P+	163	203	231	233	270	276	290	291	287	290	285	277	267	276	0
	P=	141	177	209	254	247	273	278	282	278	274	287	0	266	0	0
	P-	160	187	187	239	225	272	269	255	246	0	235	0	0	0	0

## Beef Carcase Classification and Price Reporting - Annual Report 2010

Week starting  
Week ending  
Category

<b>01/07/2010</b>
<b>31/12/2010</b>
<b>C</b>

**Price cent/kg including  
VAT**

**National Average**

	1-	1=	1+	2-	2=	2+	3-	3=	3+	4-	4=	4+	5-	5=	5+
<b>E+</b>	0	0	0	0	0	0	0	0	0	0	0	0	0	0	0
<b>E=</b>	307	0	0	334	322	328	330	334	310	338	336	300	0	0	0
<b>E-</b>	0	287	277	325	325	326	324	318	320	323	322	0	0	0	0
<b>U+</b>	280	302	302	314	320	326	328	328	327	327	326	324	304	0	0
<b>U=</b>	269	287	293	311	317	323	321	322	321	322	321	317	298	302	0
<b>U-</b>	264	276	292	307	313	317	317	317	316	316	316	308	296	298	0
<b>R+</b>	266	272	284	301	306	309	310	310	310	310	309	303	290	287	292
<b>R=</b>	249	267	281	299	302	304	305	306	305	305	305	299	283	282	285
<b>R-</b>	236	271	278	298	300	304	305	305	305	305	305	299	284	284	286
<b>O+</b>	209	243	259	280	284	288	293	293	294	293	293	286	272	276	272
<b>O=</b>	216	234	255	276	280	283	288	288	288	288	283	282	268	265	266
<b>O-</b>	195	232	250	270	275	276	281	281	280	280	277	276	268	272	235
<b>P+</b>	183	216	238	262	267	268	273	274	273	273	270	269	264	256	0
<b>P=</b>	179	198	234	255	263	264	269	269	270	271	268	264	245	0	0
<b>P-</b>	182	197	213	249	256	260	262	267	269	267	282	224	0	0	0

## Beef Carcase Classification and Price Reporting - Annual Report 2010

Week starting  
Week ending  
Category

<b>01/07/2010</b>
<b>31/07/2010</b>
<b>C</b>

**Price cent/kg including  
VAT**

**National Average**

	1-	1=	1+	2-	2=	2+	3-	3=	3+	4-	4=	4+	5-	5=	5+
<b>E+</b>	0	0	0	0	0	0	0	0	0	0	0	0	0	0	0
<b>E=</b>	0	0	0	333	281	310	336	313	0	0	0	0	0	0	0
<b>E-</b>	0	0	259	315	321	329	322	315	309	0	0	0	0	0	0
<b>U+</b>	0	306	294	304	319	331	330	329	328	329	329	324	0	0	0
<b>U=</b>	293	200	300	316	318	322	326	325	326	325	324	313	295	0	0
<b>U-</b>	277	253	291	302	314	320	322	320	320	320	319	313	301	299	0
<b>R+</b>	252	263	293	306	308	313	315	314	315	314	313	308	292	281	294
<b>R=</b>	255	267	282	301	305	309	310	310	310	310	310	304	287	278	300
<b>R-</b>	249	278	278	300	304	308	310	310	311	311	310	302	288	284	293
<b>O+</b>	231	235	263	283	289	292	299	299	299	299	298	290	276	272	288
<b>O=</b>	215	246	251	278	284	288	293	294	293	293	287	285	270	268	288
<b>O-</b>	190	232	249	271	280	280	285	284	284	284	280	281	274	0	224
<b>P+</b>	145	207	228	262	271	272	277	276	276	275	271	272	277	249	0
<b>P=</b>	173	169	218	258	264	264	271	272	270	274	268	265	245	0	0
<b>P-</b>	165	218	210	254	263	267	269	270	275	270	0	224	0	0	0

## Beef Carcase Classification and Price Reporting - Annual Report 2010

Week starting

Week ending

Category

**01/08/2010**

**31/08/2010**

**C**

**Price cent/kg including  
VAT**

**National Average**

	1-	1=	1+	2-	2=	2+	3-	3=	3+	4-	4=	4+	5-	5=	5+
<b>E+</b>	0	0	0	0	0	0	0	0	0	0	0	0	0	0	0
<b>E=</b>	0	0	0	330	336	328	0	329	310	338	0	0	0	0	0
<b>E-</b>	0	302	308	337	316	323	321	320	325	0	0	0	0	0	0
<b>U+</b>	297	300	306	315	324	330	333	334	334	327	326	330	308	0	0
<b>U=</b>	277	294	296	313	321	327	326	327	327	326	323	319	309	0	0
<b>U-</b>	279	282	295	315	318	322	323	323	322	322	322	316	299	313	0
<b>R+</b>	266	269	288	307	311	316	316	317	316	316	316	309	299	293	295
<b>R=</b>	276	281	287	304	308	311	312	312	312	312	312	306	292	291	284
<b>R-</b>	225	265	269	303	306	311	311	313	312	312	312	305	290	291	0
<b>O+</b>	172	251	263	284	292	295	300	301	301	301	301	293	278	287	275
<b>O=</b>	197	242	260	283	286	290	295	296	295	295	290	288	277	273	260
<b>O-</b>	175	259	261	276	282	284	288	287	287	287	284	283	279	270	0
<b>P+</b>	173	211	244	269	272	274	278	280	279	278	276	273	269	267	0
<b>P=</b>	165	209	244	260	267	267	276	276	276	275	272	270	0	0	0
<b>P-</b>	173	221	211	254	259	259	266	270	274	275	0	0	0	0	0

## Beef Carcase Classification and Price Reporting - Annual Report 2010

Week starting  
Week ending  
Category

<b>01/09/2010</b>
<b>30/09/2010</b>
<b>C</b>

**Price cent/kg including  
VAT**

**National Average**

	1-	1=	1+	2-	2=	2+	3-	3=	3+	4-	4=	4+	5-	5=	5+
<b>E+</b>	0	0	0	0	0	0	0	0	0	0	0	0	0	0	0
<b>E=</b>	0	0	0	330	324	330	316	0	0	0	0	300	0	0	0
<b>E-</b>	0	0	0	340	327	322	332	312	0	336	0	0	0	0	0
<b>U+</b>	252	288	296	311	319	324	323	327	324	325	322	323	0	0	0
<b>U=</b>	280	297	293	305	312	320	317	319	319	318	319	313	294	291	0
<b>U-</b>	238	276	290	307	312	313	315	315	313	313	313	306	294	294	0
<b>R+</b>	266	272	278	298	304	307	308	307	307	307	307	301	286	283	277
<b>R=</b>	272	255	268	298	300	302	303	302	302	303	302	296	279	277	0
<b>R-</b>	259	258	275	291	299	302	303	303	303	303	303	296	280	278	260
<b>O+</b>	220	246	254	279	282	286	291	291	291	291	290	283	267	266	0
<b>O=</b>	214	233	248	273	276	280	285	285	285	285	280	278	261	262	0
<b>O-</b>	188	214	252	264	267	272	277	277	277	276	272	274	251	261	0
<b>P+</b>	182	214	229	253	260	264	268	269	268	269	265	265	256	241	0
<b>P=</b>	166	185	221	249	257	262	264	266	264	265	257	249	0	0	0
<b>P-</b>	161	201	224	238	254	253	254	263	255	273	264	0	0	0	0

## Beef Carcase Classification and Price Reporting - Annual Report 2010

Week starting  
Week ending  
Category

<b>01/10/2010</b>
<b>31/10/2010</b>
<b>C</b>

**Price cent/kg including  
VAT**

**National Average**

	1-	1=	1+	2-	2=	2+	3-	3=	3+	4-	4=	4+	5-	5=	5+
<b>E+</b>	0	0	0	0	0	0	0	0	0	0	0	0	0	0	0
<b>E=</b>	307	0	0	0	336	330	0	327	0	0	0	0	0	0	0
<b>E-</b>	0	0	0	313	313	328	322	0	0	0	319	0	0	0	0
<b>U+</b>	0	300	298	310	317	317	321	320	320	322	326	313	319	0	0
<b>U=</b>	261	284	278	308	310	315	315	316	315	314	315	312	296	0	0
<b>U-</b>	266	274	268	301	306	310	310	310	310	309	308	303	290	286	0
<b>R+</b>	196	273	276	296	299	303	304	304	303	303	303	296	282	282	0
<b>R=</b>	253	273	279	293	295	298	299	299	298	298	298	292	274	276	272
<b>R-</b>	263	271	275	294	294	299	299	298	298	299	298	292	275	277	0
<b>O+</b>	197	247	255	274	276	282	287	287	286	286	286	279	263	264	240
<b>O=</b>	222	241	251	267	273	276	280	280	280	280	275	274	257	259	266
<b>O-</b>	207	227	236	263	266	268	274	273	272	273	268	267	260	241	247
<b>P+</b>	188	227	242	254	259	260	265	265	265	266	260	259	250	0	0
<b>P=</b>	176	214	224	247	254	259	261	262	261	261	262	256	0	0	0
<b>P-</b>	216	170	185	241	253	256	253	260	256	262	252	0	0	0	0

## Beef Carcase Classification and Price Reporting - Annual Report 2010

Week starting  
Week ending  
Category

<b>01/11/2010</b>
<b>30/11/2010</b>
<b>C</b>

**Price cent/kg including  
VAT**

**National Average**

	1-	1=	1+	2-	2=	2+	3-	3=	3+	4-	4=	4+	5-	5=	5+
<b>E+</b>	0	0	0	0	0	0	0	0	0	0	0	0	0	0	0
<b>E=</b>	0	0	0	334	0	321	328	332	0	0	0	0	0	0	0
<b>E-</b>	0	273	300	323	0	320	316	321	328	314	325	0	0	0	0
<b>U+</b>	290	292	304	313	308	314	318	319	322	320	321	317	295	0	0
<b>U=</b>	253	286	288	304	307	316	315	315	316	314	315	311	300	0	0
<b>U-</b>	0	274	292	300	309	310	310	310	310	309	309	303	287	282	0
<b>R+</b>	168	260	272	293	300	304	304	304	304	303	303	296	281	281	0
<b>R=</b>	221	257	281	292	296	298	298	298	298	298	298	292	276	274	271
<b>R-</b>	209	248	276	292	295	298	298	298	298	298	298	292	276	273	0
<b>O+</b>	221	219	256	271	278	281	286	286	286	286	285	278	264	266	264
<b>O=</b>	194	224	249	269	273	276	280	280	280	280	275	274	259	258	0
<b>O-</b>	194	222	250	264	267	269	274	274	274	274	269	268	255	280	0
<b>P+</b>	181	218	238	256	258	262	266	267	267	267	263	262	256	0	0
<b>P=</b>	198	176	232	248	254	258	261	262	262	264	253	254	0	0	0
<b>P-</b>	146	189	215	252	251	253	254	254	262	266	0	0	0	0	0

## Beef Carcase Classification and Price Reporting - Annual Report 2010

Week starting  
Week ending  
Category

**01/12/2010**

**31/12/2010**

**C**

**Price cent/kg including  
VAT**

**National Average**

	1-	1=	1+	2-	2=	2+	3-	3=	3+	4-	4=	4+	5-	5=	5+
<b>E+</b>	0	0	0	0	0	0	0	0	0	0	0	0	0	0	0
<b>E=</b>	0	0	0	339	347	341	339	351	0	0	336	0	0	0	0
<b>E-</b>	0	0	0	324	338	337	338	336	328	0	0	0	0	0	0
<b>U+</b>	0	334	327	332	333	340	342	340	341	344	339	333	0	0	0
<b>U=</b>	0	302	319	329	332	336	335	334	333	337	333	333	298	322	0
<b>U-</b>	0	299	322	323	328	330	332	332	329	331	331	318	314	304	0
<b>R+</b>	299	291	316	315	322	324	325	326	325	324	322	318	308	313	306
<b>R=</b>	204	262	298	315	319	320	320	320	320	320	318	313	304	299	0
<b>R-</b>	187	299	304	316	314	319	320	321	320	320	319	314	300	302	297
<b>O+</b>	210	271	270	296	300	305	309	307	308	308	307	301	289	294	311
<b>O=</b>	253	220	273	289	292	298	303	303	302	302	299	298	288	274	252
<b>O-</b>	248	239	259	284	295	292	297	298	296	296	296	291	293	306	0
<b>P+</b>	259	213	244	279	287	286	289	291	291	291	290	283	289	0	0
<b>P=</b>	185	223	255	274	284	282	288	284	292	295	297	270	0	0	0
<b>P-</b>	224	191	244	266	266	282	287	284	290	0	322	0	0	0	0



## Beef Carcase Classification and Price Reporting - Annual Report 2010

### Annex VI

01/07/2010
31/12/2010
A

#### Average Carcase Weights (kg)

	1-	1=	1+	2-	2=	2+	3-	3=	3+	4-	4=	4+	5-	5=	5+
<b>E+</b>	0	0	0	0	0	0	0	0	0	0	0	0	0	0	0
<b>E=</b>	481.4	371.6	409.1	459	466	475	495.4	496.2	507.2	485.1	536.5	0	0	0	0
<b>E-</b>	417.9	411.5	415.9	440.1	454	459.8	465.8	481.9	469.4	482.4	0	586.8	0	0	0
<b>U+</b>	367.6	387.7	391.9	409.8	419	428.5	435.1	439.3	445.6	451.8	457.5	470.8	0	0	0
<b>U=</b>	346.6	341.7	372.2	386.1	396	406.9	412.6	417.6	422	427.8	426.7	478.3	412.2	0	0
<b>U-</b>	377	337.9	357.7	362.9	375	386.4	394.6	398	401.9	409.2	412	419.7	425.5	0	0
<b>R+</b>	321.1	321.6	327.1	342.3	352	363.1	370	377.3	383.2	382.8	378.6	396.5	0	0	0
<b>R=</b>	278.2	291.4	308.3	319.3	327	335.8	345	353	358	361.9	367	348.3	0	0	0
<b>R-</b>	258.4	282.2	291.6	298.1	307	315.4	321.8	330.4	340.3	342.2	336.3	378.3	377.7	0	0
<b>O+</b>	256.9	268.7	276.4	284.2	296	304	310.1	319	323.4	331.6	330.2	354.2	0	0	0
<b>O=</b>	234.7	260.7	268	280.7	287	295.8	304.3	309.1	315.8	309.1	290.3	290.3	290.5	0	0
<b>O-</b>	225.6	246.9	264.8	273.8	279	284	290.7	297.8	299.5	325.6	295.7	0	0	0	0
<b>P+</b>	225.4	240.5	249.8	262.3	270	278.4	276.5	294.6	295.9	0	337.5	0	0	0	0
<b>P=</b>	212.9	225.8	247	248	249.8	269.4	279.6	292.2	295.1	320.7	0	0	0	0	0
<b>P-</b>	201.3	224.6	217.9	252.4	254.2	223.5	275.3	0	0	0	0	0	0	0	0

## Beef Carcase Classification and Price Reporting - Annual Report 2010

01/07/2010
31/12/2010
C

### Average Carcase Weights (kg)

	1-	1=	1+	2-	2=	2+	3-	3=	3+	4-	4=	4+	5-	5=	5+
<b>E+</b>	0	0	0	0	0	0	0	0	0	0	0	0	0	0	0
<b>E=</b>	376.9	0	0	461.4	490.7	528.9	500.2	578.5	618.1	605.2	541.4	646	0	0	0
<b>E-</b>	0	450.9	454.1	486.6	473.4	457.6	487	469.3	476.2	571.8	489.4	0	0	0	0
<b>U+</b>	295	374.2	409.9	429.4	429.6	435.4	445.9	458.7	462.8	469.5	479.5	468.2	473.8	0	0
<b>U=</b>	356.5	383.3	395.4	394.7	408.9	415.1	422.5	429.6	437.1	446	451.3	457.3	476.5	461.4	0
<b>U-</b>	341.7	368	370.2	382.3	388.9	394.9	403.7	411.9	421.1	427	431.7	440.7	441	440.2	0
<b>R+</b>	302.2	353.4	353.1	359.6	370.5	378.3	386.2	394.6	403	409.9	413	420.7	426.3	446	473
<b>R=</b>	283.8	308.9	328.3	338.2	351.5	360.1	366.7	374.6	381.5	387.2	393	398.7	405.1	417.1	439.6
<b>R-</b>	270.9	282.4	309.4	323.2	332	340.3	346.7	354.1	360.3	366.1	371.7	379.4	387.7	399.3	447.7
<b>O+</b>	244.9	268.5	287.9	301.1	312.8	319.5	325.7	333.8	340.4	348.2	356.3	367.5	377.5	397.9	447.3
<b>O=</b>	226.3	257.3	271.9	285.5	294.6	302.4	310.4	321	330.9	339.7	348.5	357.6	369	401	527.2
<b>O-</b>	206.9	249	270.9	278.6	287.2	296.6	307.2	318.7	329.3	337.8	345.9	358.7	367.2	408.9	502.8
<b>P+</b>	216.5	242.6	261.4	271.5	284.6	294	306.4	318.6	327.3	336.6	348.2	355.5	354	396.9	0
<b>P=</b>	195.7	228.4	250.7	267	279.9	292.2	303	314.1	323.2	331.5	328.2	344.5	187.6	0	0
<b>P-</b>	190.3	233.6	256	268.4	281.2	298.1	307.2	316.2	330.6	337.3	340.1	423.3	0	0	0

## Beef Carcase Classification and Price Reporting - Annual Report 2010

01/07/2010
31/12/2010
D

### Average Carcase Weights (kg)

	1-	1=	1+	2-	2=	2+	3-	3=	3+	4-	4=	4+	5-	5=	5+
<b>E+</b>	0	0	0	0	0	0	0	0	0	0	0	0	0	0	0
<b>E=</b>	0	0	508.2	503.6	495.8	0	619.2	458.2	0	0	0	0	0	0	0
<b>E-</b>	0	0	0	0	411.8	461.3	561.9	568.9	480.3	600	0	0	0	0	0
<b>U+</b>	576.6	434.9	465.9	0	500.8	468.4	455.1	460.1	471.8	466.1	477.3	483.1	492.7	480.3	502.6
<b>U=</b>	0	412.8	456.9	396.2	431.3	399.8	442.9	442.6	445.1	456	450.4	456.4	462	467.4	484.2
<b>U-</b>	0	368.9	369.7	394.8	416.3	401.6	407.7	416	421.2	422.4	435.6	436.1	441.4	439.6	444.6
<b>R+</b>	0	390.9	367.7	365.7	370.6	386.6	387.8	389.4	393.3	397.7	402.8	408.8	412.7	426	427.8
<b>R=</b>	334	354.3	338.7	348.5	357.3	356.1	361.7	365.5	369.3	373.2	377.8	383.8	388.9	392	405.5
<b>R-</b>	325.4	307.6	325.4	327.3	336.9	337.2	340	344.8	347.3	350.4	354.5	357.2	363.4	371.3	379.2
<b>O+</b>	304.5	299.7	311.5	314.3	313.7	313.8	320.1	323.7	324.1	329.3	332.7	337	341.7	348.5	355.4
<b>O=</b>	277	280.1	284.3	288.9	291.4	295.9	300.1	303.8	307.7	312.1	316.6	320.9	324.8	330.6	339.4
<b>O-</b>	240.5	261.1	264.2	270.6	276.9	281.9	287.3	294.2	299.6	303.2	307.5	312.4	314.5	321.8	325.8
<b>P+</b>	217.3	240.4	249.5	258	268.7	275.9	282.8	290.6	296.8	301.4	306	311.3	311.8	314.1	330.9
<b>P=</b>	210.8	232.4	242.3	253.3	264	274.5	281.7	290.3	295.5	300.5	306.3	306.9	311.5	327.7	335.9
<b>P-</b>	216.5	230.4	242.9	254.7	265	273.3	281.1	291.8	296.9	296.6	300.8	312.1	310.6	322.2	0

## Beef Carcase Classification and Price Reporting - Annual Report 2010

01/07/2010
31/12/2010
E

### Average Carcase Weights (kg)

	1-	1=	1+	2-	2=	2+	3-	3=	3+	4-	4=	4+	5-	5=	5+
<b>E+</b>	0	0	0	0	0	0	0	0	0	0	0	0	0	0	0
<b>E=</b>	428.5	373.3	371.9	444.9	316.1	433.6	473.2	469.1	417.6	547.8	0	0	0	0	0
<b>E-</b>	367.6	293.7	350.4	387.2	405.7	346.8	384.1	388.2	432.3	440.3	422.3	404.2	405.5	545.9	0
<b>U+</b>	299.6	314	336.7	355.2	355.4	372.8	368.9	375.5	382.5	399.3	386.6	403.1	388.2	590.5	440.4
<b>U=</b>	305.4	338	307.5	325.2	338.4	343.9	347.1	354.1	362.8	373	374.7	383	396.6	426.2	431.2
<b>U-</b>	268.1	308.9	316.1	317.9	326.9	330	335.6	341.4	345.9	353.6	358.9	362.9	372.4	382.3	404.9
<b>R+</b>	259.3	293	295.9	301	307.7	312.8	318.3	323.4	328.8	331.5	335.2	342.6	345.8	357.3	375.5
<b>R=</b>	248.1	266.4	278.5	285.6	289.2	295.4	299.8	304.3	308.3	312.3	315.1	320.9	328.4	336	361.6
<b>R-</b>	238.9	244.8	260.6	263.3	272.6	277.4	281.1	285.5	289.3	293.4	296.3	303.3	308.5	320.8	336.2
<b>O+</b>	211.6	236.8	245.9	251.5	253.8	263.2	265.5	269	273	277.9	283.9	291.6	298.4	308.8	334.3
<b>O=</b>	205.2	224.2	227.1	238.4	243	244.1	249.7	254.9	261.5	267.6	275.8	284.2	294.4	302.3	339.5
<b>O-</b>	189.9	193.4	212.3	222.5	228.6	235.2	241.4	249.6	255.9	264.1	272	279.7	288.6	303.5	300
<b>P+</b>	167.1	173.8	203.7	222.4	233.8	243.7	252.5	258.4	264.7	272.8	279.8	279.3	276.5	286.3	290.9
<b>P=</b>	166.7	190.9	208.3	224.3	243.5	248.6	258.6	265.7	276.9	284.3	269.4	298.4	275.8	0	0
<b>P-</b>	174	178.9	222.5	231.4	242.8	256.8	256.8	266.4	281.8	287.7	325.5	384.2	0	0	0

## Beef Carcase Classification and Price Reporting - Annual Report 2010

Annex VII

01/07/2010
31/12/2010
A

### Numbers within Grades

	1-	1=	1+	2-	2=	2+	3-	3=	3+	4-	4=	4+	5-	5=	5+	Total	% of total
<b>E+</b>	0	0	0	0	0	0	0	0	0	0	0	0	0	0	0	<b>0</b>	<b>0.00</b>
<b>E=</b>	1	2	2	14	22	28	18	11	5	3	1	0	0	0	0	<b>107</b>	<b>0.17</b>
<b>E-</b>	1	4	9	45	118	147	96	59	27	5	0	1	0	0	0	<b>512</b>	<b>0.81</b>
<b>U+</b>	3	22	101	392	1012	1539	1511	914	315	90	16	1	0	0	0	<b>5916</b>	<b>9.36</b>
<b>U=</b>	3	35	129	444	1235	1990	2019	1368	571	150	29	2	2	0	0	<b>7977</b>	<b>12.63</b>
<b>U-</b>	10	38	168	641	1509	2473	2584	1821	795	212	49	5	4	0	0	<b>10309</b>	<b>16.32</b>
<b>R+</b>	14	53	180	615	1372	2181	2374	1703	831	252	48	8	0	0	0	<b>9631</b>	<b>15.25</b>
<b>R=</b>	12	56	227	525	1003	1555	1624	1243	645	221	54	6	0	0	0	<b>7171</b>	<b>11.35</b>
<b>R-</b>	14	59	179	496	961	1277	1172	821	371	121	42	5	2	0	0	<b>5520</b>	<b>8.74</b>
<b>O+</b>	15	75	227	597	1149	1319	1068	595	249	85	20	1	0	0	0	<b>5400</b>	<b>8.55</b>
<b>O=</b>	36	110	380	853	1243	1210	872	409	137	34	9	1	1	0	0	<b>5295</b>	<b>8.38</b>
<b>O-</b>	44	149	390	746	909	690	421	166	49	12	4	0	0	0	0	<b>3580</b>	<b>5.67</b>
<b>P+</b>	59	97	207	296	311	200	146	60	8	0	1	0	0	0	0	<b>1385</b>	<b>2.19</b>
<b>P=</b>	39	51	68	47	40	30	24	5	6	1	0	0	0	0	0	<b>311</b>	<b>0.49</b>
<b>P-</b>	20	13	5	13	2	2	4	0	0	0	0	0	0	0	0	<b>59</b>	<b>0.09</b>
<b>Total</b>	<b>271</b>	<b>764</b>	<b>2272</b>	<b>5724</b>	<b>10886</b>	<b>14641</b>	<b>13933</b>	<b>9175</b>	<b>4009</b>	<b>1186</b>	<b>273</b>	<b>30</b>	<b>9</b>	<b>0</b>	<b>0</b>	<b>63173</b>	<b>100.00</b>

## Beef Carcase Classification and Price Reporting - Annual Report 2010

01/07/2010  
31/12/2010  
C

### Numbers within Grades

Total																% of total	
	1-	1=	1+	2-	2=	2+	3-	3=	3+	4-	4=	4+	5-	5=	5+		
E+	0	0	0	0	0	0	0	0	0	0	0	0	0	0	0	0	0.00
E=	1	0	0	8	9	8	9	14	2	1	1	1	0	0	0	54	0.02
E-	0	4	5	15	18	29	33	24	14	3	2	0	0	0	0	147	0.04
U+	3	19	60	126	302	334	513	577	357	184	73	27	4	0	0	2579	0.74
U=	9	25	84	216	528	729	1250	1518	1146	655	365	109	23	3	0	6660	1.90
U-	10	50	115	351	908	1569	2773	4239	3286	2114	1278	472	103	12	0	17280	4.94
R+	14	44	168	521	1478	2435	4851	8063	7639	5524	3568	1398	344	56	6	36109	10.32
R=	23	78	238	704	1914	3298	6807	12164	11594	9267	6778	2593	722	90	5	56275	16.08
R-	22	97	299	746	1922	3348	6745	11585	12631	10901	8187	3393	940	130	5	60951	17.42
O+	31	98	302	745	1790	2970	6398	11691	13497	11531	8408	3182	815	95	8	61561	17.60
O=	68	143	331	751	1829	3174	6777	11980	11833	9159	5607	1879	417	48	4	54000	15.43
O-	65	133	356	774	1733	3009	5682	7851	6751	4109	2072	608	120	12	2	33277	9.51
P+	87	138	319	586	1416	2008	3311	3716	2492	1230	514	138	26	4	0	15985	4.57
P=	70	84	166	300	539	637	872	862	455	204	58	17	1	0	0	4265	1.22
P-	82	42	62	75	116	111	94	83	46	15	3	2	0	0	0	731	0.21
Total	485	955	2505	5918	14502	23659	46115	74367	71743	54897	36914	13819	3515	450	30	349874	100.00

## Beef Carcase Classification and Price Reporting - Annual Report 2010

01/07/2010	Numbers within Grades																
31/12/2010																	
D																	
																Total	% of total
	1-	1=	1+	2-	2=	2+	3-	3=	3+	4-	4=	4+	5-	5=	5+		
E+	0	0	0	0	0	0	0	0	0	0	0	0	0	0	0	0	0.00
E=	0	0	1	2	4	0	1	2	0	0	0	0	0	0	0	10	0.01
E-	0	0	0	0	1	3	1	3	4	1	0	0	0	0	0	13	0.01
U+	1	1	1	0	3	7	17	17	29	26	26	29	18	6	3	184	0.12
U=	0	1	2	4	11	22	34	73	89	92	101	69	67	27	9	601	0.39
U-	0	6	6	10	33	44	90	182	229	229	244	229	172	102	47	1623	1.05
R+	0	3	13	22	70	112	195	391	489	560	631	555	431	310	104	3886	2.52
R=	3	8	23	71	119	160	383	764	943	1101	1327	1149	944	619	235	7849	5.08
R-	8	22	35	79	182	306	582	1081	1484	1731	2067	1888	1483	1048	330	12326	7.98
O+	12	33	61	124	280	454	889	1742	2320	2574	3152	2714	2107	1337	355	18154	11.76
O=	21	57	109	222	488	698	1432	2751	3299	3642	3975	3290	2177	1168	273	23602	15.28
O-	64	111	211	398	845	1142	2490	3959	4595	4663	4444	2878	1704	680	137	28321	18.34
P+	263	388	615	991	1744	2337	3900	5422	4957	3874	2847	1557	646	203	37	29781	19.29
P=	1114	926	1131	1308	1687	1707	2146	2178	1630	949	548	257	86	22	4	15693	10.16
P-	4267	1756	1363	1118	1082	794	785	593	342	157	79	33	10	3	0	12382	8.02
Total	5753	3312	3571	4349	6549	7786	12945	19158	20410	19599	19441	14648	9845	5525	1534	154425	100.00

## Beef Carcase Classification and Price Reporting - Annual Report 2010

01/07/2010
31/12/2010
E

Numbers within Grades

																Total	% of total
	1-	1=	1+	2-	2=	2+	3-	3=	3+	4-	4=	4+	5-	5=	5+		
<b>E+</b>	0	0	0	0	0	0	0	0	0	0	0	0	0	0	0	0	0.00
<b>E=</b>	2	2	2	3	2	3	3	2	2	1	0	0	0	0	0	22	0.01
<b>E-</b>	3	3	5	3	11	4	16	10	7	2	2	1	1	1	0	69	0.04
<b>U+</b>	11	13	13	32	80	91	133	174	124	95	66	27	3	1	4	867	0.47
<b>U=</b>	10	21	39	68	181	284	430	620	491	392	260	120	52	16	4	2988	1.61
<b>U-</b>	18	36	68	188	383	708	1152	1618	1598	1280	1016	483	160	51	5	8764	4.72
<b>R+</b>	26	59	148	447	935	1589	2896	4599	4883	4229	3207	1604	663	174	40	25499	13.75
<b>R=</b>	39	67	189	523	1171	2025	3817	6473	6836	6411	5095	2704	1040	287	60	36737	19.81
<b>R-</b>	51	92	207	496	1200	2063	3902	6214	7306	7040	5808	3201	1221	319	48	39168	21.12
<b>O+</b>	42	54	125	308	759	1273	2495	4190	5002	4919	3869	1938	754	157	26	25911	13.97
<b>O=</b>	52	81	153	385	820	1563	3104	5199	5790	5166	3605	1677	618	123	25	28361	15.29
<b>O-</b>	55	67	109	242	512	985	1666	2510	2430	1830	1135	488	133	40	10	12212	6.58
<b>P+</b>	72	54	97	154	306	435	581	720	563	380	192	74	27	7	1	3663	1.97
<b>P=</b>	72	69	60	85	119	116	127	129	82	35	15	10	1	0	0	920	0.50
<b>P-</b>	113	26	33	30	19	35	24	14	8	4	5	1	0	0	0	312	0.17
<b>Total</b>	566	644	1248	2964	6498	11174	20346	32472	35122	31784	24275	12328	4673	1176	223	185493	100.00



Annual report prepared by:

David Donnelly AAI.

Beef Carcase Classification and Price Reporting Division.

Grattan Business Centre.

Dublin Road. Portlaoise.

057 869 4407

[david.donnelly@agriculture.gov.ie](mailto:david.donnelly@agriculture.gov.ie)

\*Franz Marc was a German painter, born in Munich. Marc is best known for his paintings of animals—particularly horses and deer—in which he attempted to express his mystical veneration of nature. In works such as *Blue Horses* (1911, Walker Art Center, Minneapolis, Minnesota), he used stylized lines and curves and brilliant unrealistic color to create and heighten the sense of nature idealized. After 1913, in response to cubism and futurism, he turned to abstraction, creating moods of clashing, discordant uncertainty. He was killed in action during World War I.