

Meat Market Report

30/07/18 - 05/08/18

Week

31



**An Roinn Talmhaíochta,
Bia agus Mara**
Department of Agriculture,
Food and the Marine

MARKET SUMMARY

Beef

Deadweight Prices c/100Kg (Including VAT)

| | U3 | U4 | R3 | R4 | O3 | O4 | P+ |
|-------------|-------|-------|-------|-------|-------|-------|-------|
| Steers | 413.0 | 412.7 | 401.6 | 401.8 | 382.9 | 385.9 | 359.3 |
| Heifers | 428.8 | 428.3 | 413.1 | 413.1 | 395.1 | 394.1 | 362.7 |
| Young Bulls | 410.3 | 413.1 | 396.4 | 400.7 | 371.7 | 0.0 | 360.0 |
| Cows | | | 341.2 | 339.3 | 315.2 | 316.2 | 302.1 |

Liveweight Prices

| | |
|-----------------------------------|----------------------------------|
| *Bull Calf Average Price | €185.3 per head (Excluding VAT) |
| **Young Store Average Price | €218.0 per 100kg (Excluding VAT) |
| ***Yearling (male & female) Price | €181.5 per 100kg (Excluding VAT) |

* Aged 8-28 days ** Aged 180-364 days, Male & Female ***age 365-730 days

Slaughterings

34,226 cattle slaughtered this week, of which steers were 14,266 (41.7%), heifers 8,091 (23.6%), young bulls 3,271 (9.6%) and cows 7,775 (22.7%). Total slaughter is 1,025,565 compared to 990,396 in 2017, an 3.6% increase.

Live Trade

1,064 cattle were exported in the week commencing 30/07/2018*;760 to EU (Except NI). Live exports for 2018 amount to 190,991 compared to 145,609 in 2017, up 30% on 2017 levels.

*This data is provisional and subject to revision.

The next meeting of the Management Committee for the Common Organisation of Agricultural Markets (Animal Products Sector) is 30 August 2018

CONTENTS:

Page 2: Market Summary Beef
 Page 3: Market Summary Other Meats
 Page 4: Beef Price and Slaughter Summary
 Page 5: Comparative Beef Prices
 Page 6: Steer and Young Bull Price
 Page 7: Heifer and Cow Graphs
 Page 8: Price and Slaughter Graphs
 Page 9: Liveweight Beef Graphs

Page 10: Beef Export Maps
 Page 11: Beef Export Info
 Page 12: Market Access Update
 Page 13: Pig Price Graph
 Page 14: Pig Slaughtering
 Page 15: Sheep Prices
 Page 16: Sheep Slaughterings
 Page 17: Poultry Slaughtering

MARKET SUMMARY

Pigmeat

Grade E Pig
Prices (Ex.
VAT)

The Grade E Pig price for week commencing 30/07/2018 was €137.33 per 100Kg. This compares to €166.84 in the same week last year, a 17.7% decrease.

Further details available on page 13

Slaughtering

66,189 pigs were slaughtered in week 31 of which 1,596 were sows. The cumulative figure for pig slaughterings in 2018 is 2,028,068 which is up 4% against the same point last year.

Further details available on page 14

Sheepmeat

Sheepmeat
Prices (Ex.
VAT)

The national average price for the week commencing 23/07/2018 was €489.22 per 100Kg, an increase of 6.4% over the same week last year.

Further details available on page 15

Slaughtering

63,326 sheep were slaughtered at sheep export premises the week commencing 30/07/2018, compared to 59,766 in the same week of 2017. Sheep slaughterings for 2018 is 6% up on 2017 at 1,646,949 head.

Live Trade

Total live exports to European Countries stood at 6,108 head up to the 9th of August.

Poultry

Slaughtering

Cumulative poultry slaughterings for 2018* stand at 52,534,571 birds at the end of week 28, up 2.5% compared to the same period last year.

Further details available on page 17

*Latest Figures are provisional and subject to change

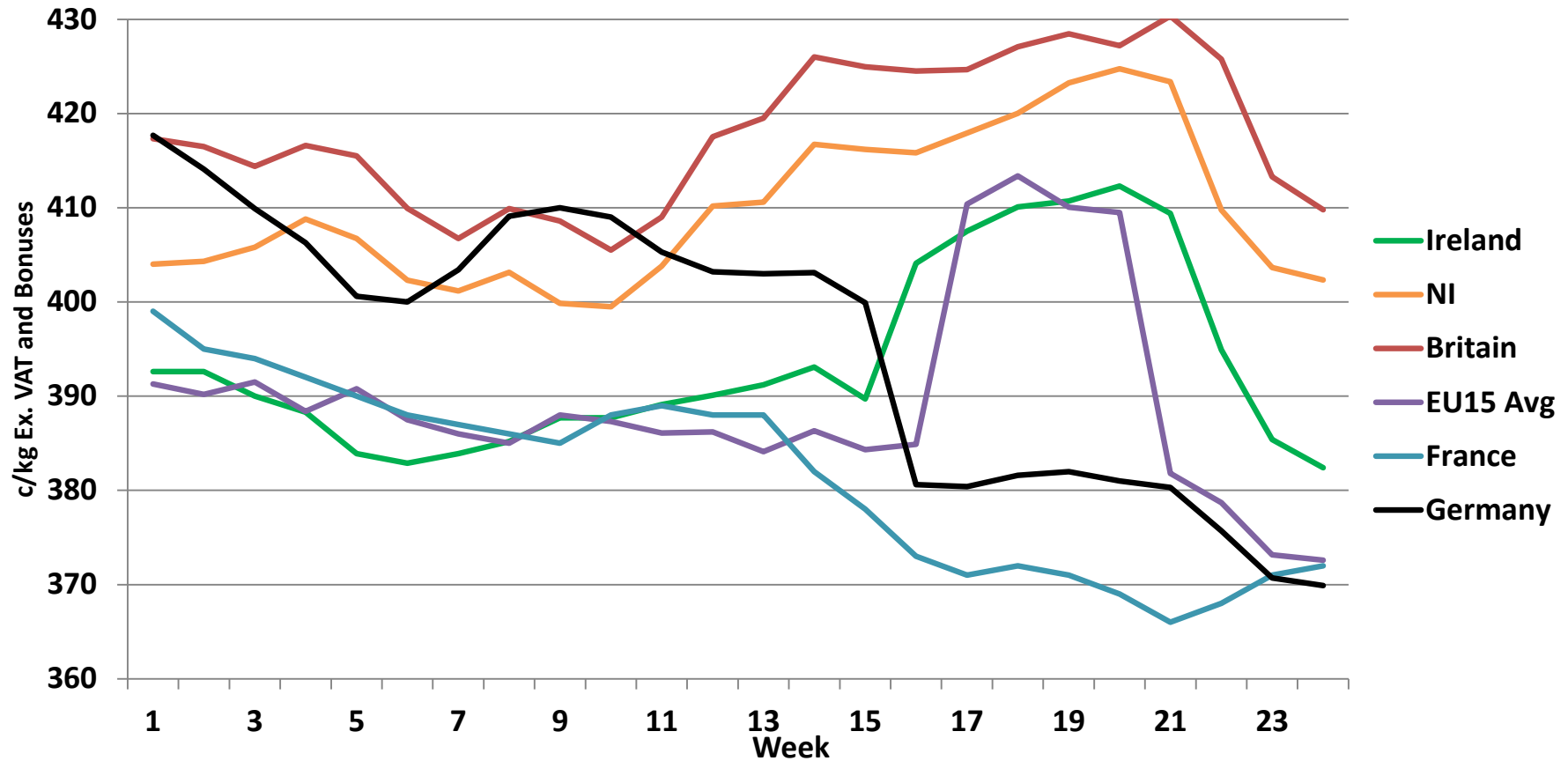
| Dead Weight Prices | W/C | W/C | Same week 2017 | % change prev week | % change 2017 |
|-------------------------|----------|----------|----------------|--------------------|---------------|
| | 30/07/18 | 23/07/18 | 31/07/17 | | |
| Steers (R3) (c/kg) | 381.0 | 382.4 | 391.8 | -0.4% | -2.7% |
| Heifers (R3) (c/kg) | 392.0 | 393.1 | 402.2 | -0.3% | -2.6% |
| Young Bulls (U3) (c/kg) | 389.3 | 392.0 | 403.1 | -0.7% | -3.4% |
| Cows (04) (c/kg) | 300.0 | 299.1 | 322.1 | 0.3% | -6.9% |

| Live Weight Prices | W/C | W/C | Same week 2017 | % change previous week | % change 2017 |
|--|----------|----------|----------------|------------------------|---------------|
| | 30/07/18 | 23/07/18 | 31/07/17 | | |
| Yearlings (Male) (Aged 365 - 730 days) - (€/100Kg) | 176 | 181 | 197 | -2.8% | -10.7% |
| Yearlings (Female) (Aged 365 - 730 days) - (€/100Kg) | 187 | 186 | 208 | 0.5% | -10.1% |
| Young Stores (Male & Female) (Aged 180 - 364 days) - (€/100Kg) | 218 | 213 | 231 | 2.3% | -5.6% |
| Bull Calf (€/head) Dairy | 160.1 | 150.3 | 177.6 | 6.5% | -9.8% |
| Bull Calf (€/head) Beef | 210.5 | 206.8 | 277.8 | 1.8% | -24.2% |
| Bull Calf (€/head) Average | 185.3 | 178.5 | 227.7 | 3.8% | -18.6% |

| Slaughter Figures | % of weekly figures | W/C | Same week 2017 | Year to Date | | Change 2018 v 2017 | |
|-------------------|---------------------|---------------|----------------|------------------|----------------|--------------------|-------------|
| | | 30-Jul-18 | | 2018 | 2017 | Head | % |
| Steers | 41.7% | 14,266 | 15,258 | 360,186 | 360,793 | -607 | -0.2% |
| Cows | 22.7% | 7,775 | 6,853 | 229,261 | 220,148 | 9,113 | 4.1% |
| Heifers | 23.6% | 8,091 | 7,862 | 284,499 | 270,563 | 13,936 | 5.2% |
| Young Bulls | 9.6% | 3,271 | 2,211 | 132,639 | 122,174 | 10,465 | 8.6% |
| Mature Bulls | 2.4% | 823 | 586 | 18,980 | 16,718 | 2,262 | 13.5% |
| Total | 100% | 34,226 | 32,770 | 1,025,565 | 990,396 | 35,169 | 3.6% |

| Live Exports | W/C | Same week 2017 | W/C | Year to Date | | Change 2018 v 2017 | |
|------------------|--------------|----------------|-------------------|----------------|----------------|--------------------|------------|
| | 30-Jul-18 | | 16-Jul-18 | 2018 | 2017 | Head | % |
| Northern Ireland | 304 | 478 | 306 | 9,845 | 16,048 | -6,203 | -39% |
| EU Except NI | 760 | 440 | 1,439 | 165,973 | 115,504 | 50,469 | 44% |
| Third Countries | 0 | 0 | 407 | 14,109 | 14,057 | 52 | - |
| Total | 1,064 | 918 | 2,152 | 189,927 | 145,609 | 44,318 | 30% |
| Calves YTD: | | 150,948 | Adult Cattle YTD: | | 40,043 | | |

Irish Deadweight Cattle Prices vs Selected Other Markets, 2018

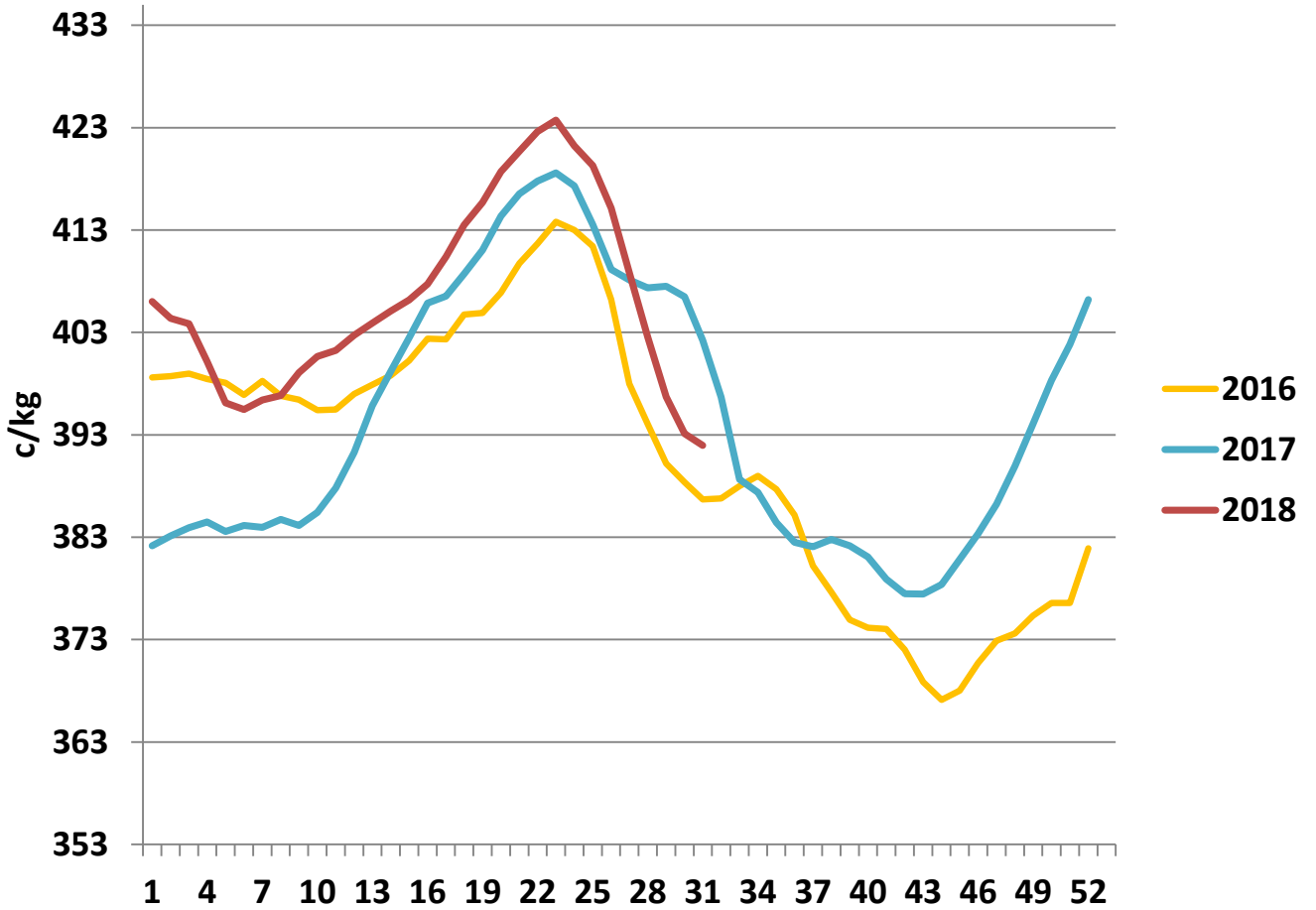


Livestock Pricing

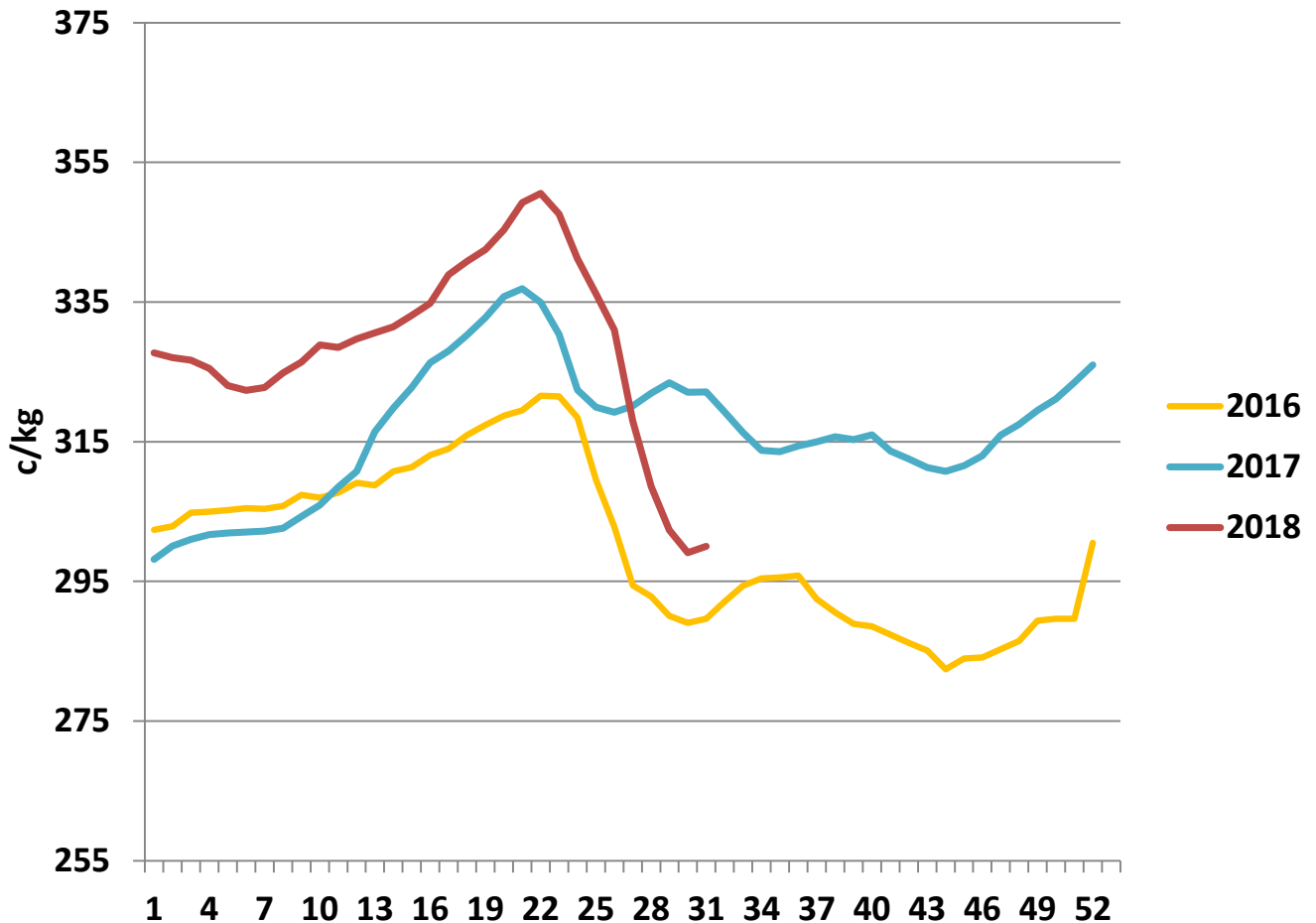
| | Ireland | NI | Britain | EU 15 Average | France | Germany |
|---------------------|--------------|---------------|---------------|---------------|------------|--------------|
| W/C 23/07/18 | 382.4 | 402.35 | 409.79 | 372.6 | 372 | 369.9 |

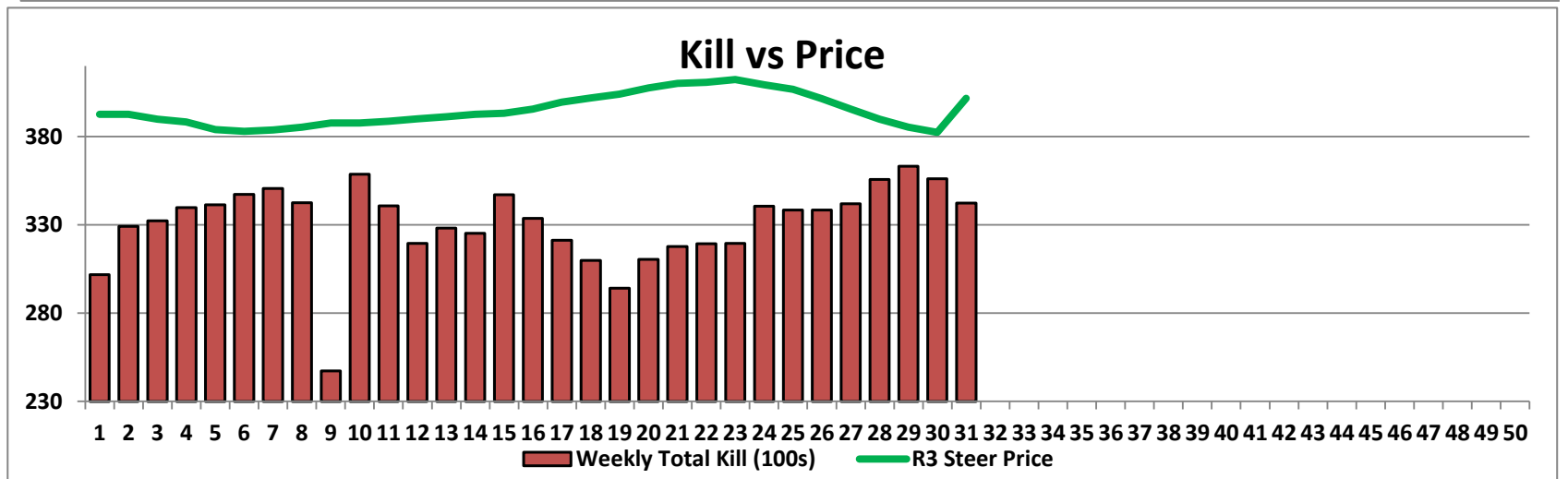
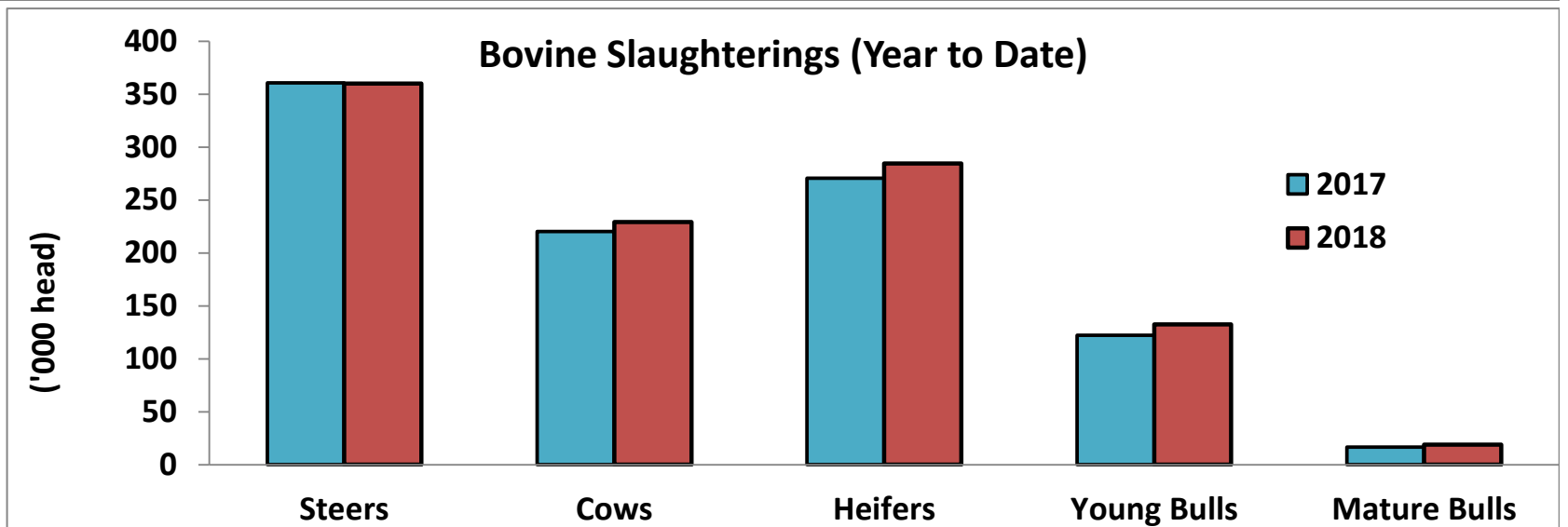
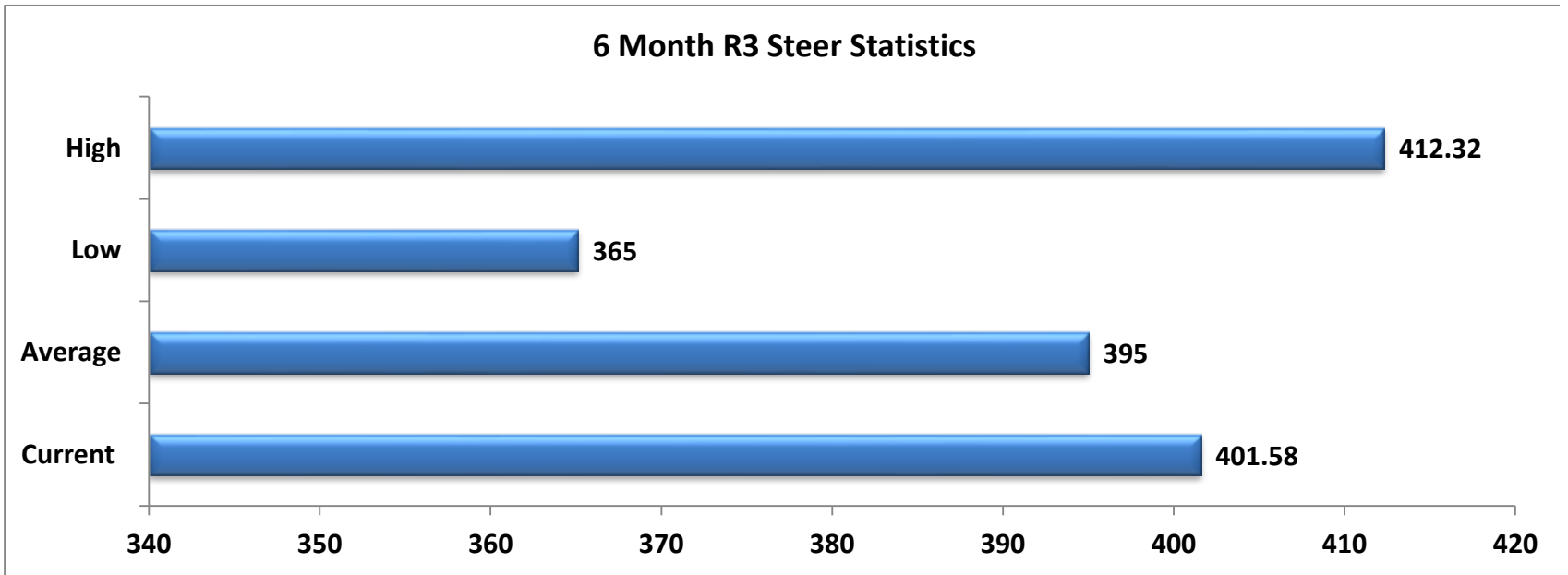
All prices ex. VAT and bonuses. Prices are c/kg most recent available for R3 Steers for Ireland, NI & GB, R3 Young Bulls for EU, France & Germany.

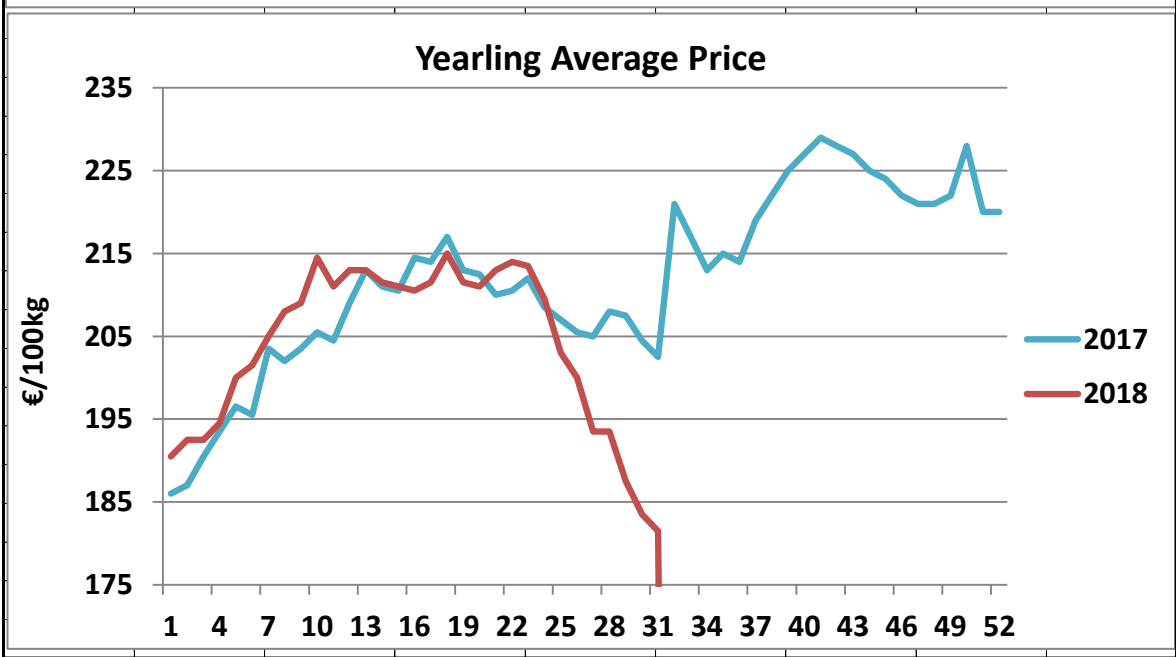
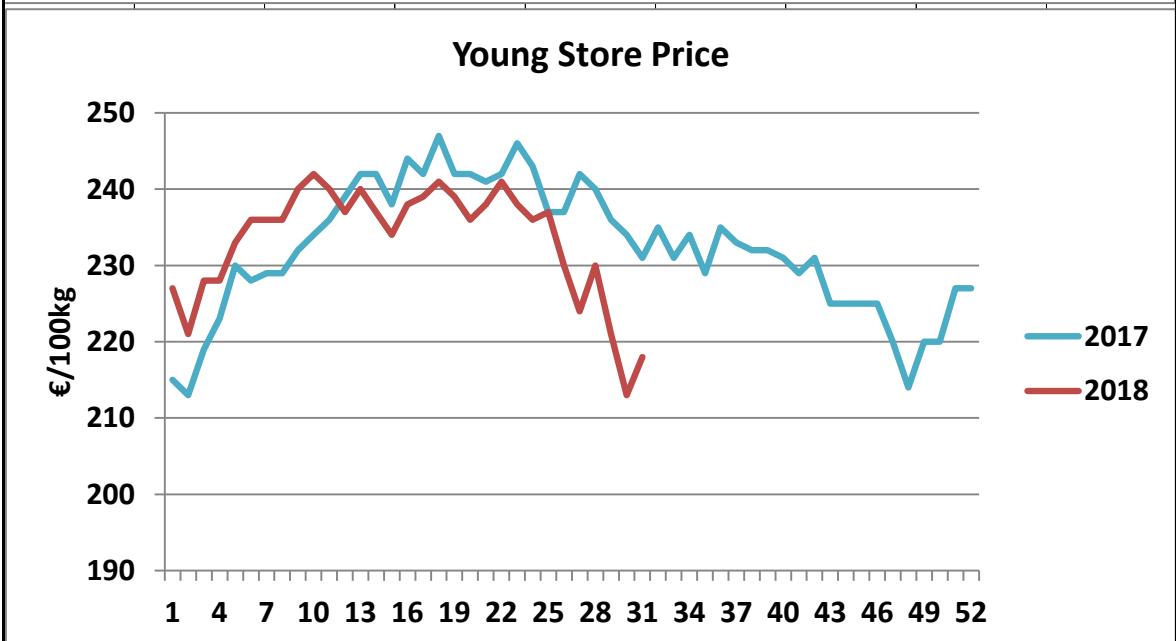
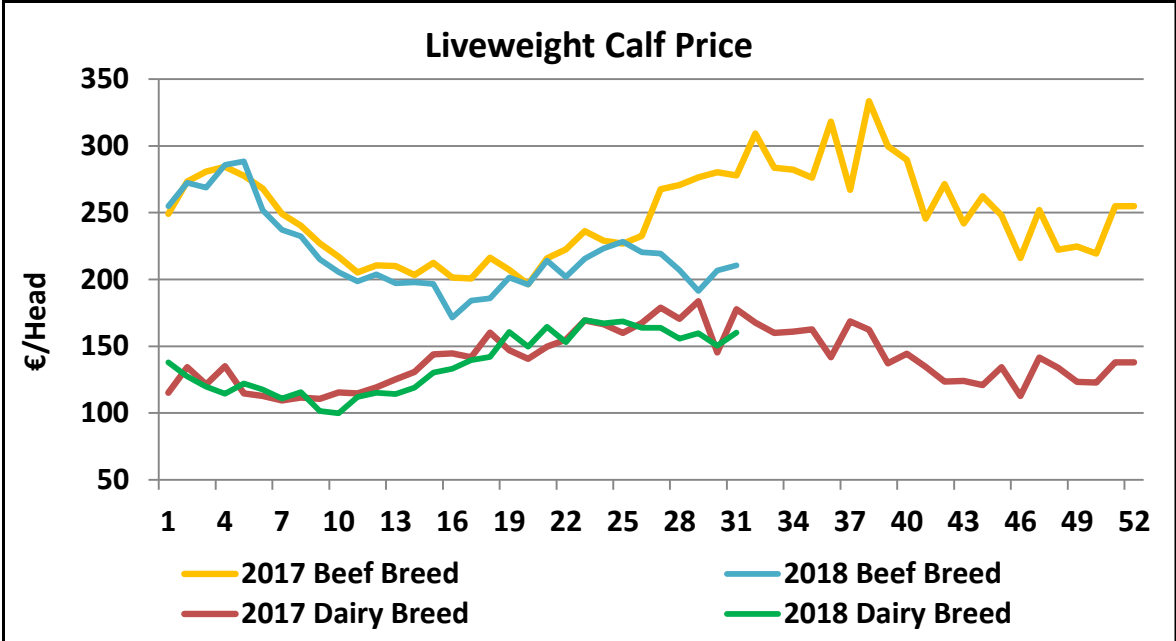
R3 Heifer prices ex. VAT



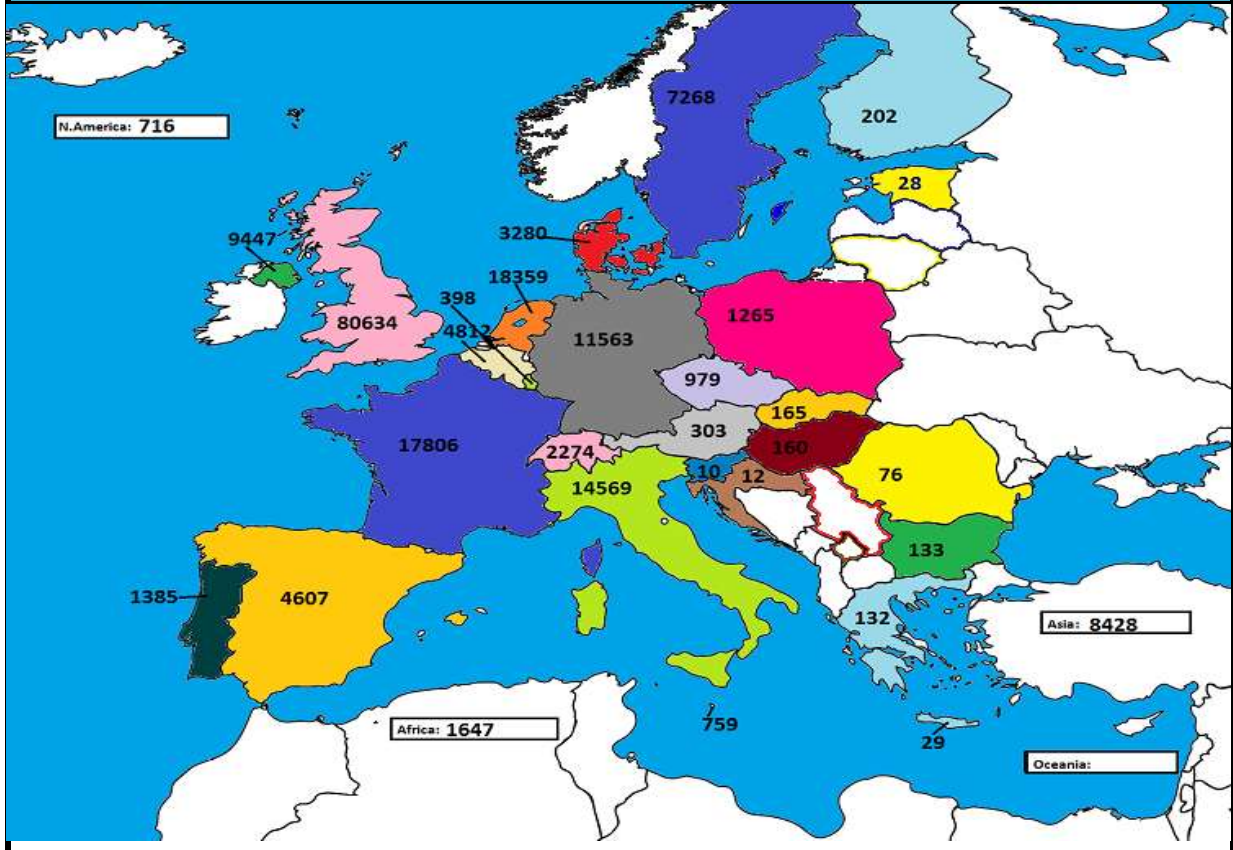
O4 Cow prices ex. VAT



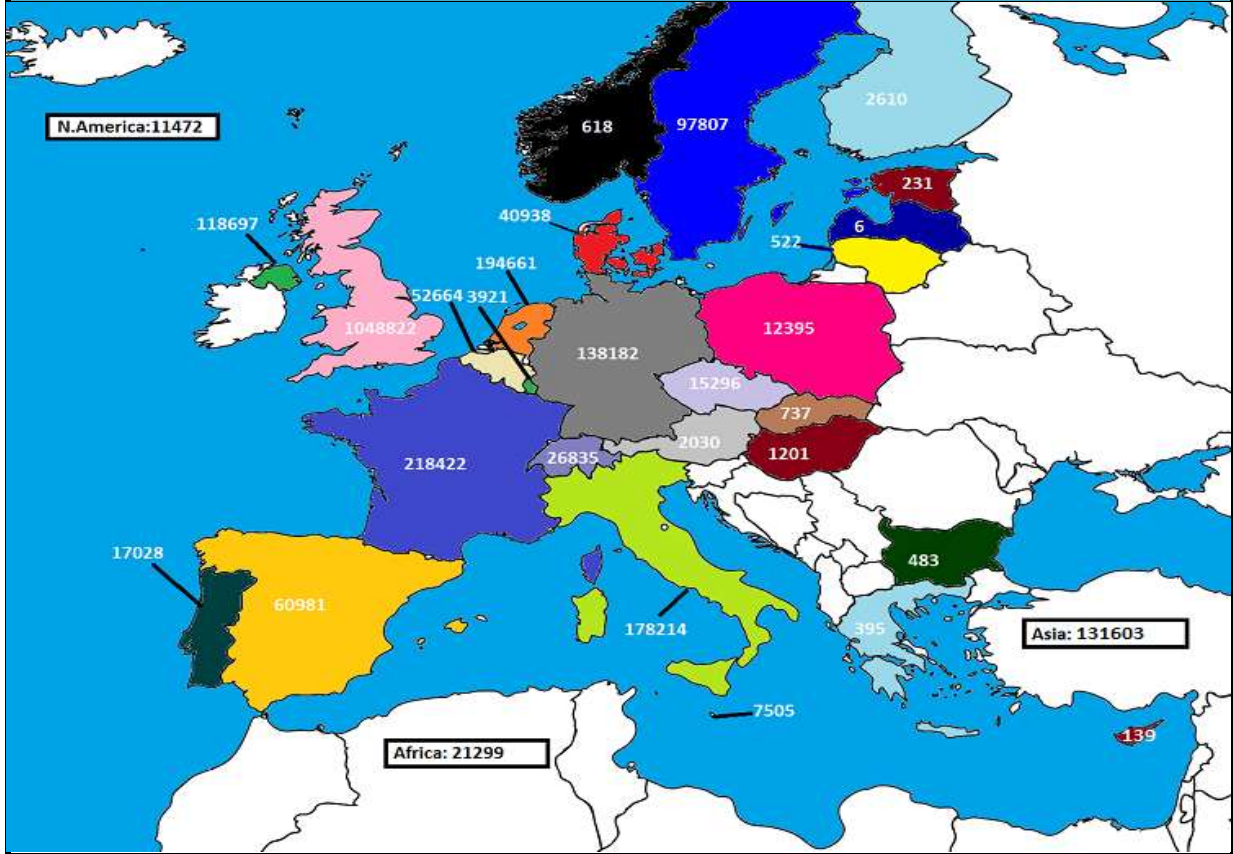




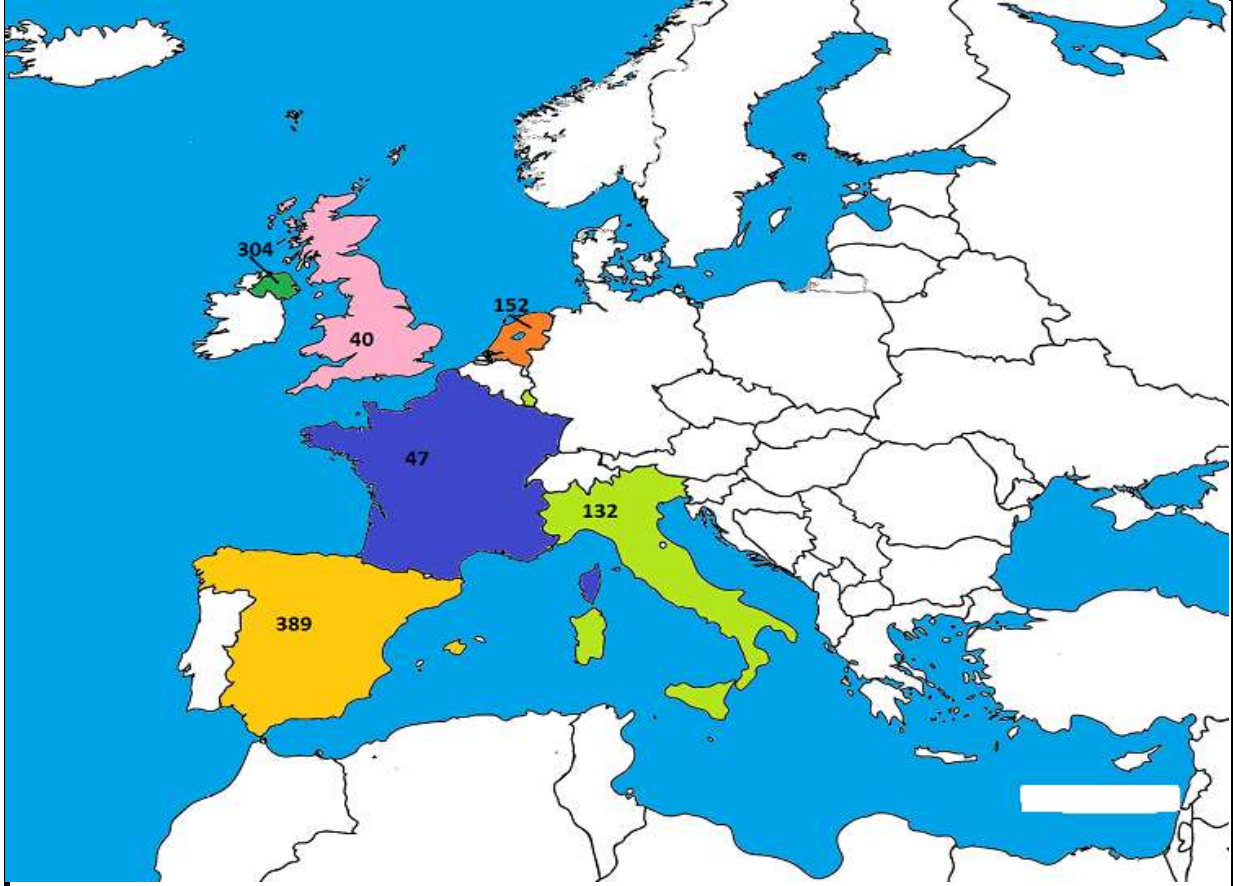
May 2018 Beef exports, €000 (CSO figures)



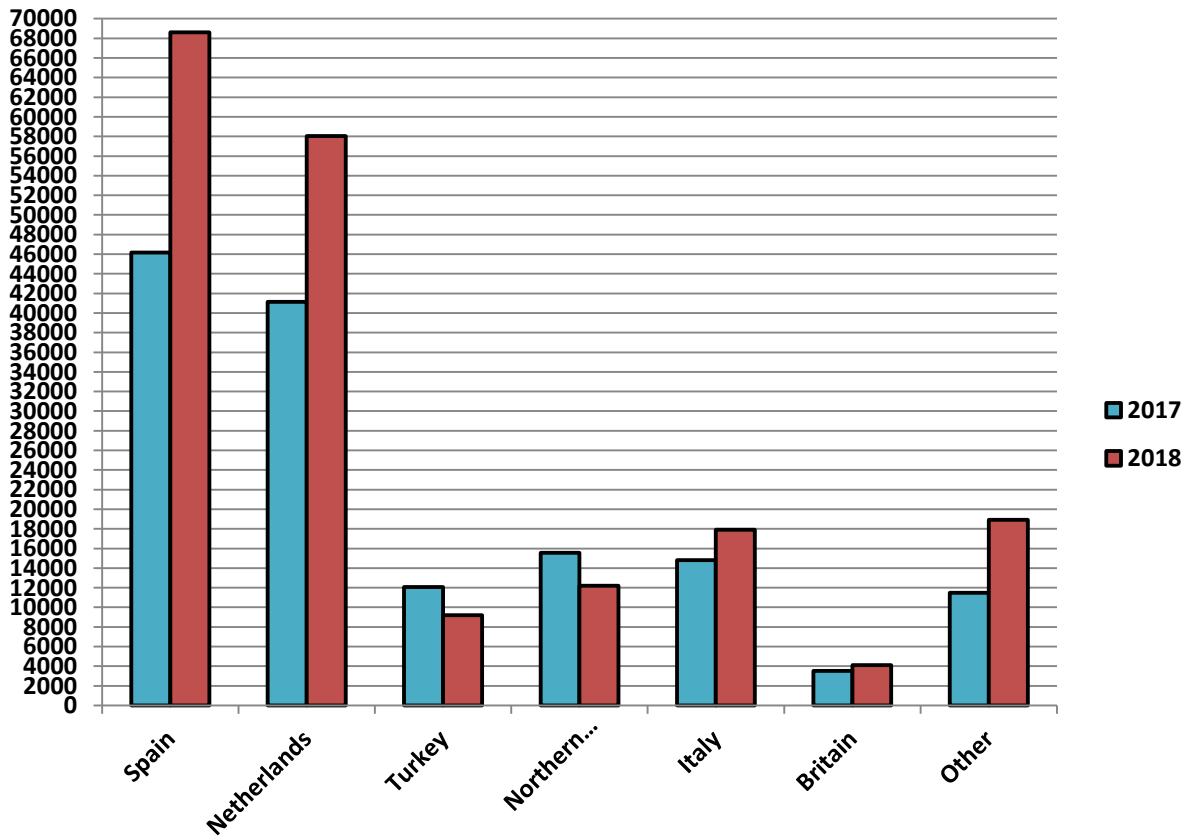
Cumulative beef exports to Dec 2017, €000 (CSO figures)



Cattle exported, w/c 30/07/18

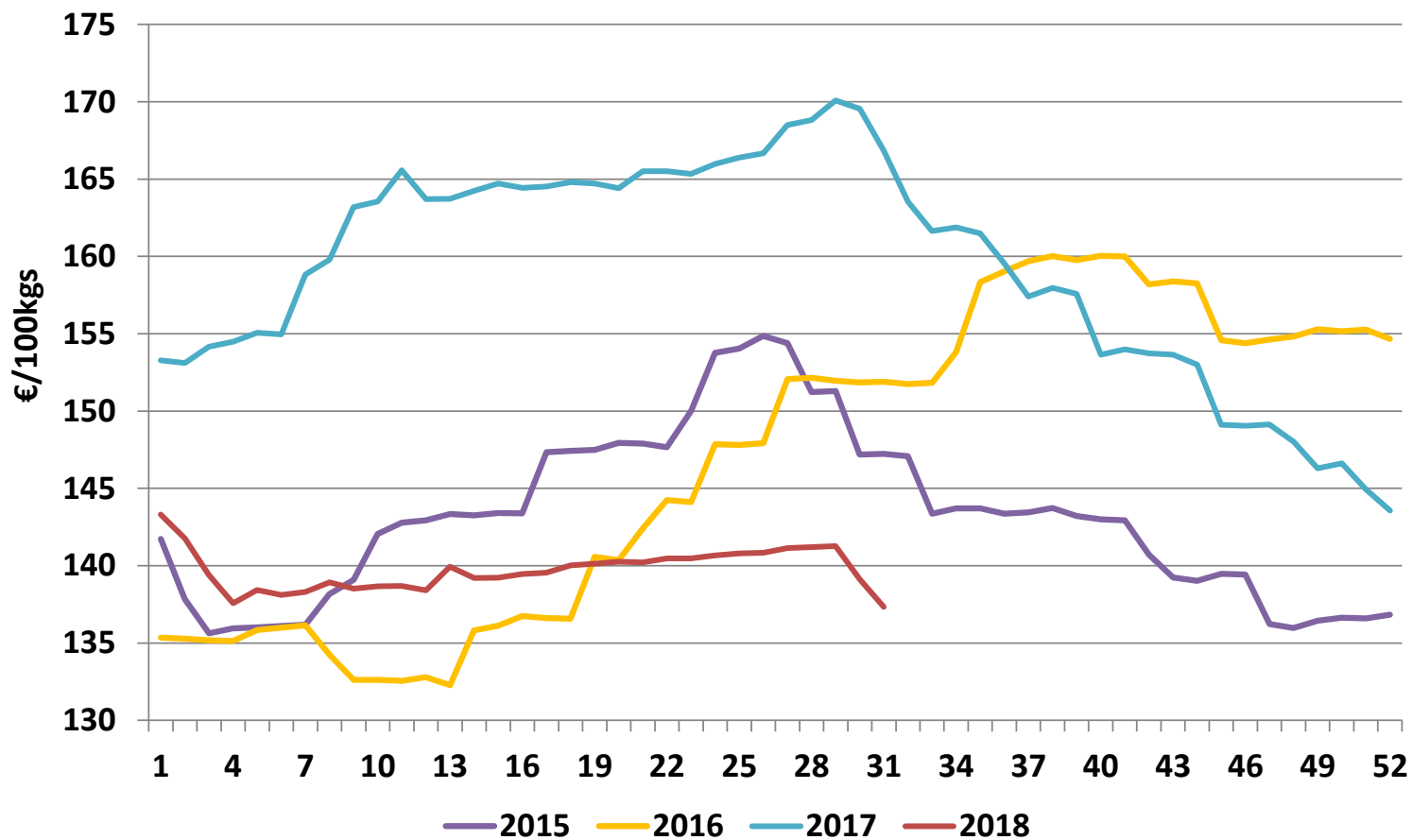


Cumulative cattle export figures, 2018

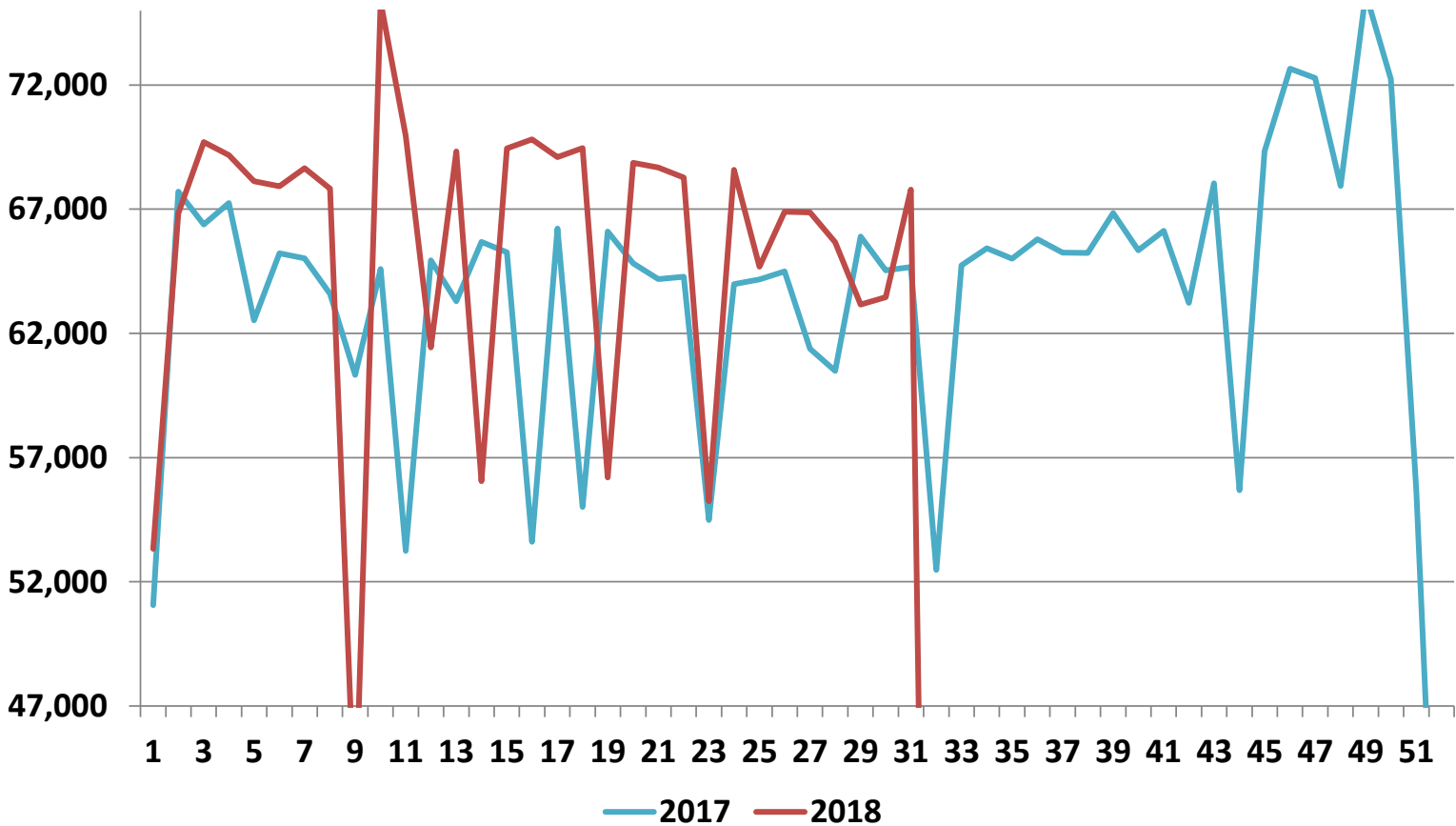


| Irish Average Grade E Pig Prices - €/100kgs | | | | | | |
|---|---------------|----------|----------|--------|--------|--------|
| Week | 2018 | Weekly % | % change | 2017 | 2016 | 2015 |
| 1 | 143.31 | | -6.5% | 153.27 | 135.34 | 141.72 |
| 2 | 141.76 | -1.1% | -7.4% | 153.10 | 135.28 | 137.83 |
| 3 | 139.39 | -1.7% | -9.6% | 154.17 | 135.18 | 135.62 |
| 4 | 137.57 | -1.3% | -10.9% | 154.48 | 135.12 | 135.95 |
| 5 | 138.43 | 0.6% | -10.7% | 155.06 | 135.84 | 136.01 |
| 6 | 138.10 | -0.2% | -10.9% | 154.96 | 135.98 | 136.10 |
| 7 | 138.30 | 0.1% | -12.9% | 158.82 | 136.13 | 136.19 |
| 8 | 138.92 | 0.4% | -13.1% | 159.79 | 134.25 | 138.17 |
| 9 | 138.51 | -0.3% | -15.1% | 163.19 | 132.61 | 139.08 |
| 10 | 138.66 | 0.1% | -15.2% | 163.55 | 132.61 | 142.06 |
| 11 | 138.69 | 0.0% | -16.2% | 165.58 | 132.55 | 142.79 |
| 12 | 138.40 | -0.2% | -15.5% | 163.71 | 132.79 | 142.93 |
| 13 | 139.93 | 1.1% | -14.5% | 163.72 | 132.27 | 143.34 |
| 14 | 139.20 | -0.5% | -15.3% | 164.25 | 135.82 | 143.25 |
| 15 | 139.23 | 0.0% | -15.5% | 164.71 | 136.11 | 143.40 |
| 16 | 139.47 | 0.2% | -15.2% | 164.43 | 136.75 | 143.39 |
| 17 | 139.54 | 0.1% | -15.2% | 164.52 | 136.62 | 147.34 |
| 18 | 140.02 | 0.3% | -15.0% | 164.80 | 136.56 | 147.43 |
| 19 | 140.12 | 0.1% | -14.9% | 164.71 | 140.56 | 147.49 |
| 20 | 140.25 | 0.1% | -14.7% | 164.42 | 140.36 | 147.93 |
| 21 | 140.22 | 0.0% | -15.3% | 165.52 | 142.42 | 147.89 |
| 22 | 140.48 | 0.2% | -15.1% | 165.50 | 144.24 | 147.66 |
| 23 | 140.47 | 0.0% | -15.0% | 165.33 | 144.11 | 150.00 |
| 24 | 140.66 | 0.1% | -15.3% | 165.99 | 147.86 | 153.77 |
| 25 | 140.79 | 0.1% | -15.4% | 166.39 | 147.80 | 154.04 |
| 26 | 140.84 | 0.0% | -15.5% | 166.68 | 147.91 | 154.86 |
| 27 | 141.14 | 0.2% | -16.2% | 168.50 | 152.06 | 154.38 |
| 28 | 141.21 | 0.0% | -16.4% | 168.83 | 152.15 | 151.22 |
| 29 | 141.26 | 0.0% | -16.9% | 170.09 | 151.95 | 151.30 |
| 30 | 139.12 | -1.5% | -18.0% | 169.56 | 151.85 | 147.19 |
| 31 | 137.33 | -1.3% | -17.7% | 166.84 | 151.90 | 147.23 |
| 32 | | | | 163.53 | 151.74 | 147.08 |
| 33 | | | | 161.65 | 151.82 | 143.37 |
| 34 | | | | 161.88 | 153.80 | 143.71 |
| 35 | | | | 161.49 | 158.35 | 143.71 |
| 36 | | | | 159.53 | 159.03 | 143.37 |
| 37 | | | | 157.41 | 159.69 | 143.44 |
| 38 | | | | 157.97 | 160.01 | 143.73 |
| 39 | | | | 157.57 | 159.75 | 143.21 |
| 40 | | | | 153.65 | 160.04 | 143.00 |
| 41 | | | | 154.00 | 159.99 | 142.93 |
| 42 | | | | 153.73 | 158.19 | 140.72 |
| 43 | | | | 153.64 | 158.39 | 139.23 |
| 44 | | | | 153.01 | 158.26 | 139.01 |
| 45 | | | | 149.10 | 154.57 | 139.48 |
| 46 | | | | 149.04 | 154.38 | 139.43 |
| 47 | | | | 149.13 | 154.63 | 136.23 |
| 48 | | | | 148.01 | 154.82 | 135.97 |
| 49 | | | | 146.30 | 155.30 | 136.45 |
| 50 | | | | 146.62 | 155.16 | 136.64 |
| 51 | | | | 144.94 | 155.26 | 136.60 |
| 52 | | | | 143.57 | 154.66 | 136.82 |
| 53 | | | | | | 135.67 |

Average Grade E Pig Price



Pig Slaughtering Figures



Pigmeat Industry Overview

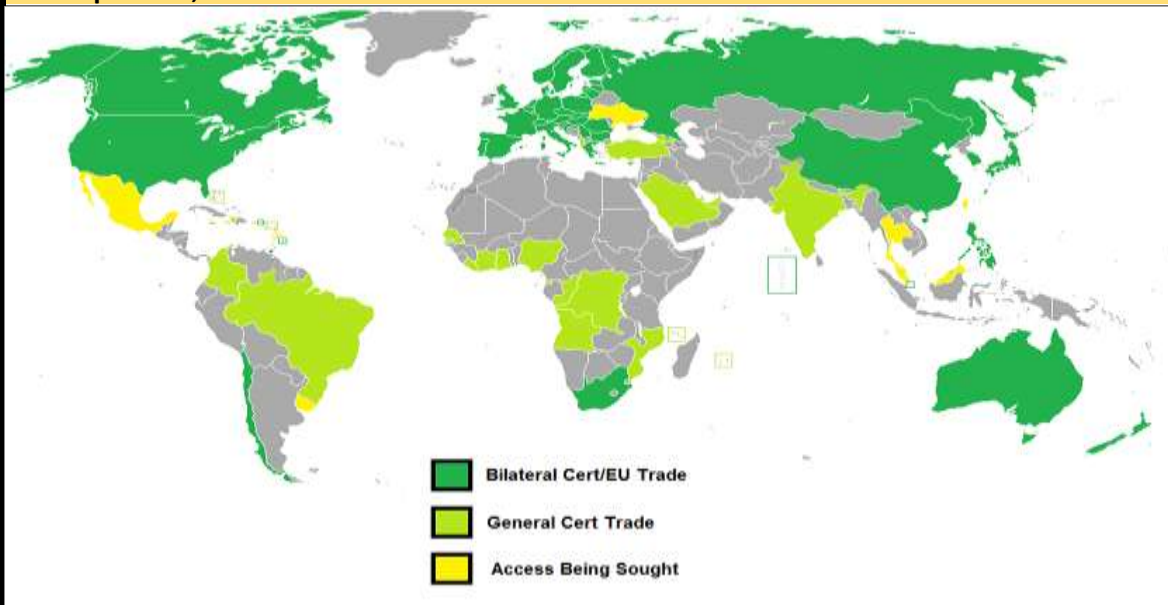
· CSO figures show that last year, Ireland exported 276,000 tonnes of pigmeat products (including prepared food) worth approximately €791m, comprising 6% of overall agri-food exports. This represents a rise of 8% in value terms when compared to 2016.

· Ireland's largest export market by far was the United Kingdom, accounting for approximately 56% of the total, followed by China, at 7%. Denmark, Germany and Japan were next, together comprising roughly 1.25% of export values.

· The Irish pig industry is characterised by large, indoor commercial farms with no 'bought in' animals. However, roughly 1,500 small scale farmers are registered with the Department of Agriculture, so a modest outdoor sector does exist.

· In 2017, 3.3m pigs were slaughtered in Irish export-approved plants, a rise of 1.2% compared to the previous year.

· Irish pigmeat exporters have access to a wide range of markets across the globe, as can be seen in the map below;



· EU production is predicted hold steady into 2019, exports to drop, imports rise and consumption to stay the same, according to the EU Commission's short-term outlook. The EU pig herd grew by 1.4% last year by head count. However, a decline in volume of 0.8% was observed. EU exports globally are projected to rise by 2.5% this year.

· EU Exports to China declined by 9% to 2.6m tonnes following the all-time highs of 2016, but still remained well above the 2015 levels. China accounted for 28% of EU exports last year, down 10% from 2016. The EU supplied 56% of China's pork imports last year.

· In April, China announced the imposition of 25% tariffs on US pork imports in retaliation for American tariffs on Chinese metals.

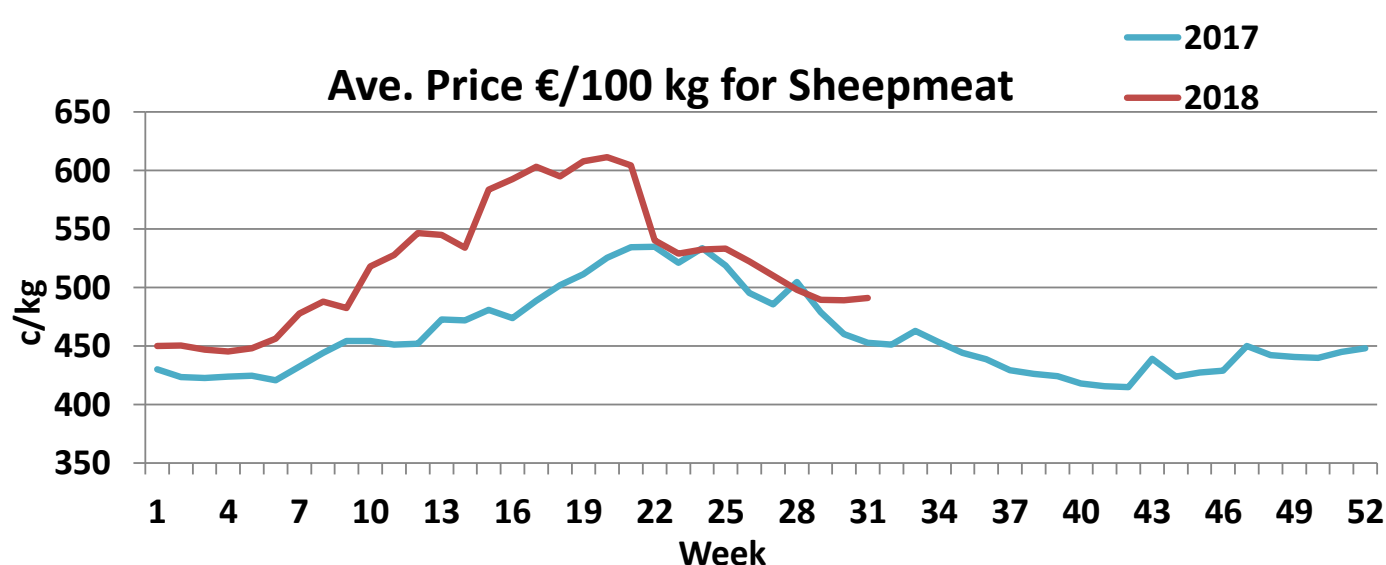
· According to OECD figures, the EU is the world's largest consumer of pigmeat at 32.5kg per capita, followed closely by China (30.8kg), Vietnam (29kg), South Korea (28.7kg) and the USA (23.6kg). In general terms, consumption is high in Europe, East Asia and the Americas, and low in the Islamic world and Africa.

Pig Slaughtering Figures at Export Approved Plants

| 2018 | | | | | | | 2017 | | | | |
|----------------------|------------------|---------------|------------------|-----------|-----------|--------|----------------------|------------------|---------------|------------------|-----------|
| Week | Pigs | Sows | Total | Cum | 2018v2017 | % Diff | Week | Pigs | Sows | Total | Cum |
| 1 | 51,490 | 1,839 | 53,329 | 53,329 | 2,278 | 4% | 1 | 49,383 | 1,668 | 51,051 | 51,051 |
| 2 | 64,796 | 2,031 | 66,827 | 120,156 | 1,397 | 1% | 2 | 65,598 | 2,110 | 67,708 | 118,759 |
| 3 | 68,008 | 1,702 | 69,710 | 189,866 | 4,724 | 3% | 3 | 64,274 | 2,109 | 66,383 | 185,142 |
| 4 | 67,302 | 1,883 | 69,185 | 259,051 | 6,667 | 3% | 4 | 65,467 | 1,775 | 67,242 | 252,384 |
| 5 | 65,886 | 2,242 | 68,128 | 327,179 | 12,275 | 4% | 5 | 60,873 | 1,647 | 62,520 | 314,904 |
| 6 | 66,072 | 1,852 | 67,924 | 395,103 | 14,969 | 4% | 6 | 63,771 | 1,459 | 65,230 | 380,134 |
| 7 | 66,751 | 1,903 | 68,654 | 463,757 | 18,596 | 4% | 7 | 63,289 | 1,738 | 65,027 | 445,161 |
| 8 | 65,920 | 1,905 | 67,825 | 531,582 | 22,825 | 4% | 8 | 61,999 | 1,597 | 63,596 | 508,757 |
| 9 | 41,794 | 359 | 42,153 | 573,735 | 4,657 | 1% | 9 | 58,513 | 1,808 | 60,321 | 569,078 |
| 10 | 72,970 | 2,385 | 75,355 | 649,090 | 15,415 | 2% | 10 | 63,238 | 1,359 | 64,597 | 633,675 |
| 11 | 68,008 | 1,937 | 69,945 | 719,035 | 32,121 | 5% | 11 | 51,558 | 1,681 | 53,239 | 686,914 |
| 12 | 59,506 | 1,925 | 61,431 | 780,466 | 28,610 | 4% | 12 | 63,182 | 1,760 | 64,942 | 751,856 |
| 13 | 67,692 | 1,634 | 69,326 | 849,792 | 34,641 | 4% | 13 | 61,444 | 1,851 | 63,295 | 815,151 |
| 14 | 54,379 | 1,673 | 56,052 | 905,844 | 25,012 | 3% | 14 | 63,895 | 1,786 | 65,681 | 880,832 |
| 15 | 67,346 | 2,105 | 69,451 | 975,295 | 29,193 | 3% | 15 | 63,474 | 1,796 | 65,270 | 946,102 |
| 16 | 67,791 | 2,022 | 69,813 | 1,045,108 | 45,396 | 5% | 16 | 51,998 | 1,612 | 53,610 | 999,712 |
| 17 | 67,224 | 1,875 | 69,099 | 1,114,207 | 48,275 | 5% | 17 | 63,977 | 2,243 | 66,220 | 1,065,932 |
| 18 | 67,453 | 2,011 | 69,464 | 1,183,671 | 62,728 | 6% | 18 | 53,557 | 1,454 | 55,011 | 1,120,943 |
| 19 | 54,510 | 1,682 | 56,192 | 1,239,863 | 52,823 | 4% | 19 | 64,247 | 1,850 | 66,097 | 1,187,040 |
| 20 | 67,150 | 1,723 | 68,873 | 1,308,736 | 56,882 | 5% | 20 | 63,028 | 1,786 | 64,814 | 1,251,854 |
| 21 | 66,590 | 2,092 | 68,682 | 1,377,418 | 61,375 | 5% | 21 | 62,150 | 2,039 | 64,189 | 1,316,043 |
| 22 | 66,404 | 1,871 | 68,275 | 1,445,693 | 65,366 | 5% | 22 | 62,840 | 1,444 | 64,284 | 1,380,327 |
| 23 | 53,696 | 1,549 | 55,245 | 1,500,938 | 66,132 | 5% | 23 | 52,834 | 1,645 | 54,479 | 1,434,806 |
| 24 | 66,779 | 1,807 | 68,586 | 1,569,524 | 70,738 | 5% | 24 | 62,294 | 1,686 | 63,980 | 1,498,786 |
| 25 | 62,897 | 1,791 | 64,688 | 1,634,212 | 71,258 | 5% | 25 | 62,455 | 1,713 | 64,168 | 1,562,954 |
| 26 | 65,378 | 1,521 | 66,899 | 1,701,111 | 73,662 | 5% | 26 | 62,554 | 1,941 | 64,495 | 1,627,449 |
| 27 | 64,921 | 1,953 | 66,874 | 1,767,985 | 79,152 | 5% | 27 | 59,582 | 1,802 | 61,384 | 1,688,833 |
| 28 | 63,997 | 1,678 | 65,675 | 1,833,660 | 84,336 | 5% | 28 | 58,904 | 1,587 | 60,491 | 1,749,324 |
| 29 | 61,430 | 1,730 | 63,160 | 1,896,820 | 81,594 | 4% | 29 | 64,112 | 1,790 | 65,902 | 1,815,226 |
| 30 | 62,022 | 1,441 | 63,463 | 1,960,283 | 80,518 | 4% | 30 | 62,572 | 1,967 | 64,539 | 1,879,765 |
| 31 | 66,189 | 1,596 | 67,785 | 2,028,068 | 83,629 | 4% | 31 | 62,929 | 1,745 | 64,674 | 1,944,439 |
| 32 | | | | | | | 32 | 50,933 | 1,545 | 52,478 | 1,996,917 |
| 33 | | | | | | | 33 | 62,812 | 1,928 | 64,740 | 2,061,657 |
| 34 | | | | | | | 34 | 63,823 | 1,603 | 65,426 | 2,127,083 |
| 35 | | | | | | | 35 | 62,962 | 2,045 | 65,007 | 2,192,090 |
| 36 | | | | | | | 36 | 63,686 | 2,109 | 65,795 | 2,257,885 |
| 37 | | | | | | | 37 | 63,255 | 1,990 | 65,245 | 2,323,130 |
| 38 | | | | | | | 38 | 63,581 | 1,659 | 65,240 | 2,388,370 |
| 39 | | | | | | | 39 | 64,972 | 1,878 | 66,850 | 2,455,220 |
| 40 | | | | | | | 40 | 63,493 | 1,850 | 65,343 | 2,520,563 |
| 41 | | | | | | | 41 | 64,269 | 1,863 | 66,132 | 2,586,695 |
| 42 | | | | | | | 42 | 61,459 | 1,770 | 63,229 | 2,649,924 |
| 43 | | | | | | | 43 | 66,014 | 2,035 | 68,049 | 2,717,973 |
| 44 | | | | | | | 44 | 53,954 | 1,733 | 55,687 | 2,773,660 |
| 45 | | | | | | | 45 | 67,519 | 1,823 | 69,342 | 2,843,002 |
| 46 | | | | | | | 46 | 70,899 | 1,763 | 72,662 | 2,915,664 |
| 47 | | | | | | | 47 | 70,337 | 1,951 | 72,288 | 2,987,952 |
| 48 | | | | | | | 48 | 66,269 | 1,671 | 67,940 | 3,055,892 |
| 49 | | | | | | | 49 | 73,743 | 1,936 | 75,679 | 3,131,571 |
| 50 | | | | | | | 50 | 69,984 | 2,251 | 72,235 | 3,203,806 |
| 51 | | | | | | | 51 | 55,083 | 590 | 55,673 | 3,259,479 |
| 52 | | | | | | | 52 | 31,853 | 901 | 32,754 | 3,292,233 |
| 53 | | | | | | | 53 | | | | |
| Overall Total | 1,972,351 | 55,717 | 2,028,068 | | | | Overall Total | 3,200,891 | 91,342 | 3,292,233 | |

Sheepmeat Information for week 31

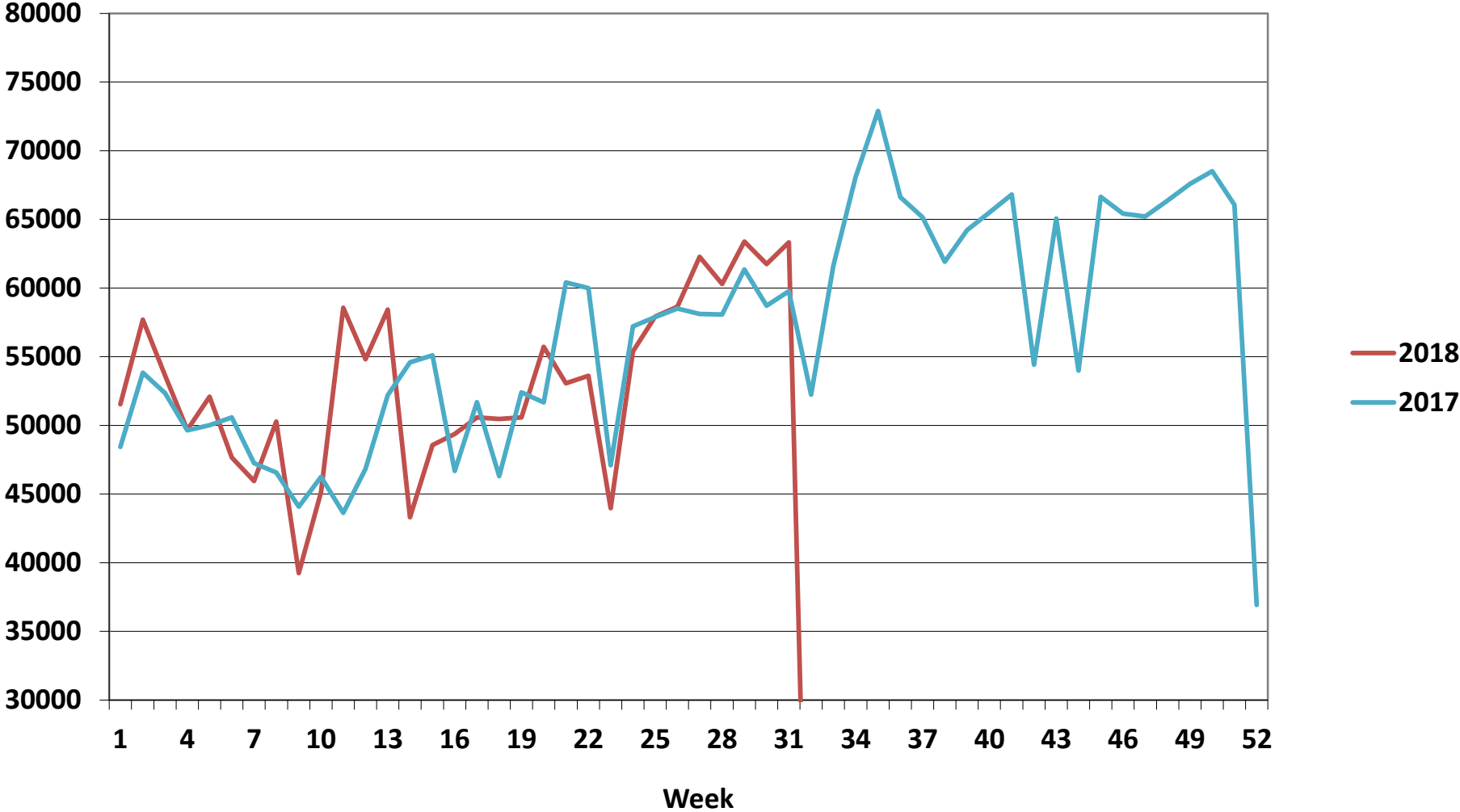
| Irish Prices €/100 kg | 2018 | 2017 | Change | EU Market Rates Heavy Lambs | €/100kg | % of Community Price |
|-----------------------|-----------|-----------|--------|-----------------------------|---------|----------------------|
| Ave Factory Price | 533.27 | 470.44 | 13.4% | Belgium | 510.7 | 108% |
| Ave Mart Price | 392.11 | 411.70 | -4.8% | Denmark | 534.0 | 113% |
| National Ave Price | 490.93 | 452.82 | 8.4% | Germany | 548.2 | 116% |
| YTD Ave | 521.99 | 474.18 | 10.1% | Spain | 512.5 | 109% |
| | | | | France | 626.0 | 133% |
| | | | | Hungary | 567.2 | 120% |
| | | | | Ireland | 490.9 | 104% |
| | | | | Italy | 487.0 | 103% |
| | | | | Cyprus | 447.0 | 95% |
| | | | | Latvia | 338.2 | 72% |
| Slaughterings | 2018 | 2017 | Change | Lithuania | 324.3 | 69% |
| Weekly | 63,326 | 59,766 | 6% | Netherlands | 592.5 | 126% |
| YTD | 1,646,949 | 1,627,242 | 1% | Austria | 569.0 | 121% |
| | | | | Poland | 419.9 | 89% |
| | | | | Romania | 200.7 | 43% |
| | | | | Finland | 384.5 | 82% |
| | | | | Sweden | 464.6 | 99% |
| | | | | Northern Ireland | 438.5 | 93% |
| | | | | Great Britain | 473.3 | 100% |
| | | | | United Kingdom | 470.8 | 100% |
| | | | | Community | 471.4 | 100% |



**REPORT ON SLAUGHTERING AT SHEEP EXPORT PREMISES
WEEK 31**

| CATEGORY | 2018 | | 2017 | DIFFERENCE | | % Differences 2018 vs 2017 |
|---------------|---------------|---------------|---------------|--------------|------------|----------------------------|
| | Weekly | Cumulative | Weekly | Weekly | Cumulative | Weekly |
| Lambs/Hoggets | 313 | 313 | 217 | 96 | | 44% |
| Spring Lambs | 50,536 | 50,536 | 47,980 | 2,556 | | 5% |
| Ewes and Rams | 12,477 | 12,477 | 11,568 | 909 | | 8% |
| Light Lambs | - | - | 1 | -1 | | -100% |
| TOTAL | 63,326 | 63,326 | 59,766 | 3,560 | | 6% |

Weekly Sheep Slaughtering



| Comparison of Poultry Slaughter Figures Between 2018 and 2017 | | | | | | |
|---|-------------|-----------------|-------------|-----------------|-------------|--------------|
| WEEK | 2018 weekly | 2018 cumulative | 2017 weekly | 2017 cumulative | 2017 v 2018 | % difference |
| 1 | 1,625,961 | 1,625,961 | 1,800,752 | 1,800,752 | -174,791 | -9.7% |
| 2 | 1,969,356 | 3,595,317 | 1,855,926 | 3,656,678 | -61,361 | -1.7% |
| 3 | 1,932,194 | 5,527,511 | 1,904,859 | 5,561,537 | -34,026 | -0.6% |
| 4 | 1,886,770 | 7,414,281 | 1,885,286 | 7,446,823 | -32,542 | -0.4% |
| 5 | 1,800,824 | 9,215,105 | 1,831,229 | 9,278,052 | -62,947 | -0.7% |
| 6 | 1,813,024 | 11,028,129 | 1,777,430 | 11,055,482 | -27,353 | -0.2% |
| 7 | 1,808,499 | 12,836,628 | 1,859,200 | 12,914,682 | -78,054 | -0.6% |
| 8 | 1,922,060 | 14,758,688 | 1,808,065 | 14,722,747 | 35,941 | 0.2% |
| 9 | 1,557,975 | 16,316,663 | 1,768,257 | 16,491,004 | -174,341 | -1.1% |
| 10 | 2,159,284 | 18,475,947 | 1,842,204 | 18,333,208 | 142,739 | 0.8% |
| 11 | 1,957,072 | 20,433,019 | 1,709,219 | 20,042,427 | 390,592 | 1.9% |
| 12 | 1,734,665 | 22,126,409 | 1,868,499 | 21,910,926 | 215,483 | 1.0% |
| 13 | 1,874,839 | 24,001,248 | 1,823,125 | 23,734,051 | 267,197 | 1.1% |
| 14 | 1,755,145 | 25,756,393 | 1,766,109 | 25,500,160 | 256,233 | 1.0% |
| 15 | 1,963,967 | 27,720,360 | 1,770,716 | 27,270,876 | 449,484 | 1.6% |
| 16 | 2,008,587 | 29,728,947 | 1,654,606 | 28,925,482 | 803,465 | 2.8% |
| 17 | 1,994,979 | 31,723,926 | 1,969,576 | 30,895,058 | 828,868 | 2.7% |
| 18 | 1,944,920 | 33,668,846 | 1,717,922 | 32,612,980 | 1,055,866 | 3.2% |
| 19 | 1,749,772 | 35,418,618 | 1,867,134 | 34,480,114 | 938,504 | 2.7% |
| 20 | 2,007,305 | 37,425,923 | 1,841,906 | 36,322,020 | 1,103,903 | 3.0% |
| 21 | 1,948,360 | 39,374,283 | 1,799,032 | 38,121,052 | 1,253,231 | 3.3% |
| 22 | 1,965,217 | 41,339,500 | 1,831,652 | 39,952,704 | 1,386,796 | 3.5% |
| 23 | 1,726,225 | 43,065,725 | 1,813,217 | 41,765,921 | 1,299,804 | 3.1% |
| 24 | 1,881,726 | 44,988,726 | 1,880,162 | 43,646,083 | 1,342,643 | 3.1% |
| 25 | 1,896,280 | 46,843,731 | 1,846,871 | 45,492,954 | 1,350,777 | 3.0% |
| 26 | 1,934,425 | 48,786,157 | 1,821,416 | 47,314,370 | 1,471,787 | 3.1% |
| 27 | 1,818,807 | 50,604,964 | 1,958,626 | 49,272,996 | 1,331,968 | 2.7% |
| 28 | 1,929,607 | 52,567,845 | 1,959,125 | 51,232,121 | 1,335,724 | 2.6% |
| 29 | 2,022,893 | 54,557,464 | 1,883,821 | 53,115,942 | 1,441,522 | 2.7% |
| 30 | 1,912,787 | 56,470,251 | 1,895,118 | 55,011,060 | 1,459,191 | 2.7% |
| 31 | | | | | | |
| 32 | | | | | | |
| 33 | | | | | | |
| 34 | | | | | | |
| 35 | | | | | | |
| 36 | | | | | | |
| 37 | | | | | | |
| 38 | | | | | | |
| 39 | | | | | | |
| 40 | | | | | | |
| 41 | | | | | | |
| 42 | | | | | | |
| 43 | | | | | | |
| 44 | | | | | | |
| 45 | | | | | | |
| 46 | | | | | | |
| 47 | | | | | | |
| 48 | | | | | | |
| 49 | | | | | | |
| 50 | | | | | | |
| 51 | | | | | | |
| 52 | | | | | | |