

# Meat Market Report

17/06/19 - 23/06/19

Week

25



**An Roinn Talmhaíochta,  
Bia agus Mara**

Department of Agriculture,  
Food and the Marine

# MARKET SUMMARY

## Beef

### Deadweight Prices c/100Kg (Including VAT)

	U3	U4	R3	R4	O3	O4	P+
Steers	406.5	404.4	396.2	396.8	380.7	382.7	355.6
Heifers	425.4	422.8	410.2	409.1	394.4	393.5	356.7
Young Bulls	396.0	395.2	384.7	386.4	358.1	361.7	338.8
Cows			330.2	329.7	309.8	310.5	299.1

### Liveweight Prices

*Bull Calf Average Price	€160.1 per head (Excluding VAT)
**Young Store Average Price	€219.0 per 100kg (Excluding VAT)
***Yearling (male & female) Price	€197.5 per 100kg (Excluding VAT)

\* Aged 8-28 days \*\* Aged 180-364 days, Male & Female \*\*\*age 365-730 days

### Slaughterings

**34,544** cattle slaughtered this week, of which steers were **10,517 (30%)**, heifers **10,160 (29%)**, young bulls **4,774 (14%)** and cows **8,306 (24%)**. Total YTD slaughter is **855,892** compared to **815,577** in 2018, a **5% increase**.

### Live Trade

**4,222** cattle were exported in the week commencing **17/06/2019\***; **3,706** to EU (Except NI). Live exports for 2019 amount to **224,599** compared to **172,889** in 2018, up **30%** on 2018 levels.

\*This data is provisional and subject to revision.

**The next meeting of the Management Committee for the Common Organisation of Agricultural Markets (Animal Products Sector) is 23rd May 2019**

### CONTENTS:

Page 2: Market Summary Beef  
 Page 3: Market Summary Other Meats  
 Page 4: Beef Price and Slaughter Summary  
 Page 5: Comparative Beef Prices  
 Page 6: Steer and Young Bull Price  
 Page 7: Heifer and Cow Graphs  
 Page 8: Price and Slaughter Graphs  
 Page 9: Liveweight Beef Graphs

Page 10: Beef Export Maps  
 Page 11: Beef Export Info  
 Page 12: Pig price and slaughter graphs  
 Page 13: Sheep prices and slaughter  
 Page 15: Sheep price and slaughter graphs

# MARKET SUMMARY

## Pigmeat

Grade E Pig  
Prices (Ex.  
VAT)

The Grade E Pig price for week commencing 17/06/2019 was €173.56 per 100Kg compared to €140.79 in the same week last year, which represents a 23% increase.

Slaughtering

63,515 pigs were slaughtered in week 25 of which 1,724 were sows. The cumulative figure for pig slaughterings in 2019 is 1,623,591 which is a 1% decrease with the same point last year.

## Sheepmeat

Sheepmeat  
Prices (Ex.  
VAT)

The national average price for the week commencing 17/06/2019 was €500.42 per 100Kg, a decrease of 7.1% over the same week last year.

Slaughtering

56,726 sheep were slaughtered at sheep export premises the week commencing 17/06/2019, compared to 57,926 in the same week of 2018. Sheep slaughterings for 2019 are 7% down on 2018 at 1,193,892 head.

Live Trade

Total live exports to European Countries stood at 20,769 head to the end of 2018.

## Poultry

Slaughtering

Cumulative poultry slaughterings for 2019\* stand at 50,919,706 birds at the end of week 25, up 9% compared to the same period last year.

\*Latest Figures are provisional and subject to change

Dead Weight Prices	W/C	W/C	Same week 2018	% change prev week	% change 2018
	17/06/19	10/06/19	18/06/18		
Steers (R3) (c/kg)	375.9	380.9	406.8	-1.3%	-7.6%
Heifers (R3) (c/kg)	389.3	394.4	419.3	-1.3%	-7.2%
Young Bulls (U3) (c/kg)	375.8	380.5	414.7	-1.3%	-9.4%
Cows (04) (c/kg)	294.6	299.4	336.2	-1.6%	-12.4%

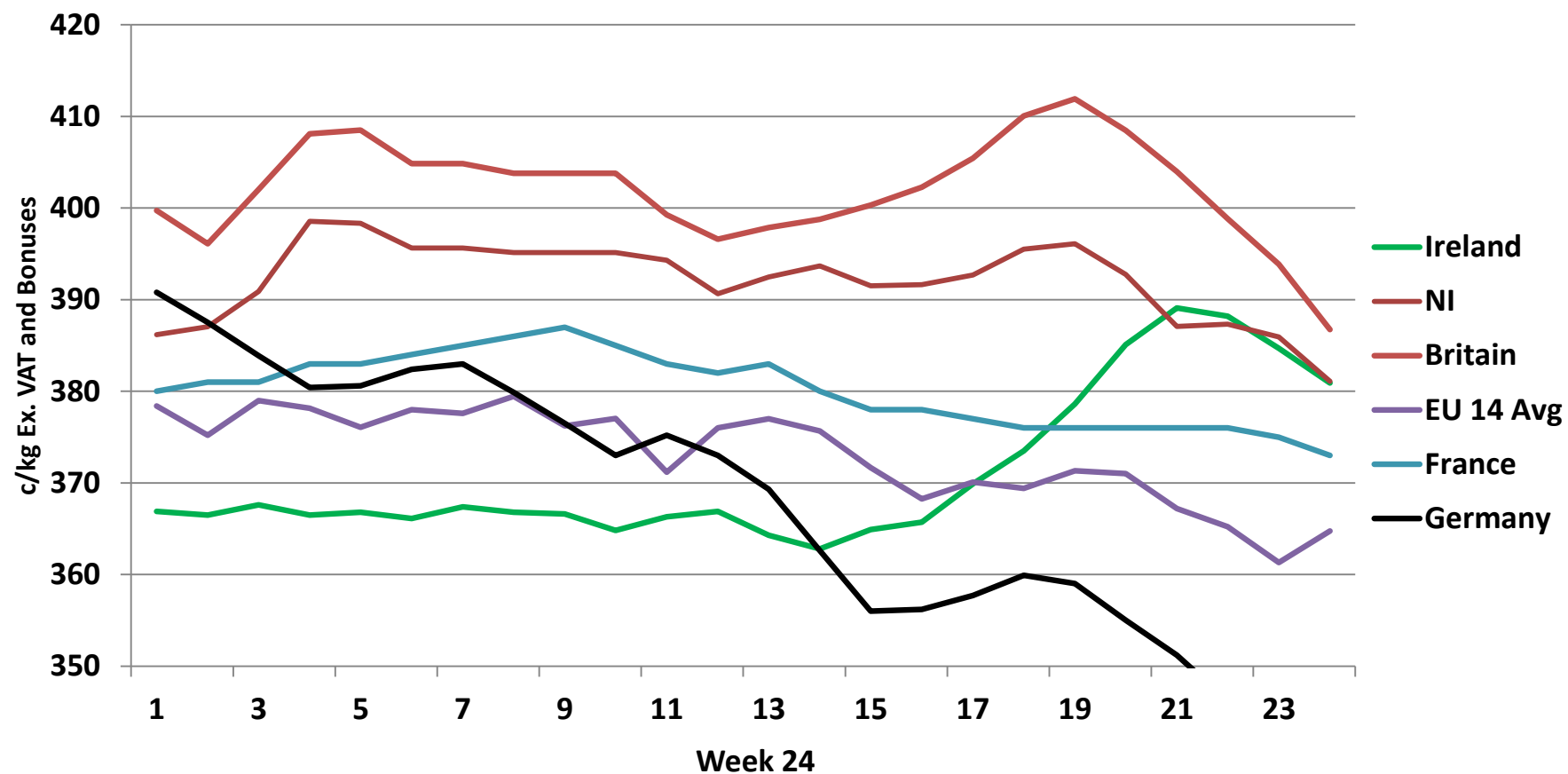
Live Weight Prices	W/C	W/C	Same week 2018	% change previous week	% change 2018
	17/06/19	10/06/19	18/06/18		
Yearlings (Male) (Aged 365 - 730 days) - (€/100Kg)	193	193	198	0.0%	-2.5%
Yearlings (Female) (Aged 365 - 730 days) - (€/100Kg)	202	206	208	-1.9%	-2.9%
Young Stores (Male & Female) (Aged 180 - 364 days) - (€/100Kg)	219	218	237	0.5%	-7.6%
Bull Calf (€/head) Dairy	140.8	170.2	168.5	-17.3%	-16.4%
Bull Calf (€/head) Beef	179.3	190.5	228.3	-5.8%	-21.5%
Bull Calf (€/head) Average	160.1	180.3	198.4	-11.2%	-19.3%

Slaughter Figures	% of weekly figures	W/C	Same week 2018	Year to Date		Change 2019 v 2018	
		17-Jun-19		2019	2018	Head	%
Steers	30.4%	10,517	11,086	275,430	280,680	-5,250	-1.9%
Cows	24.0%	8,306	8,451	177,089	177,189	-100	-0.1%
Heifers	29.4%	10,160	8,566	258,068	232,102	25,966	11.2%
Young Bulls	13.8%	4,774	5,066	125,661	110,284	15,377	13.9%
Mature Bulls	2.3%	787	671	19,631	15,322	4,309	28.1%
<b>Total</b>	<b>100%</b>	<b>34,544</b>	<b>33,840</b>	<b>855,892</b>	<b>815,577</b>	<b>40,315</b>	<b>4.9%</b>

821

Live Exports	W/C	Same week	W/C	Year to Date		Change 2019 v 2018	
	17-Jun-19	2018	10-Jun-19	2019	2018	Head	%
Northern Ireland	464	338	436	17,023	8,895	8,128	91%
EU Except NI	3,706	2,967	4,225	199,677	154,910	44,767	29%
Third Countries	52	0	113	7,899	9,084	-1,185	-
<b>Total</b>	<b>4,222</b>	<b>3,305</b>	<b>4,774</b>	<b>224,599</b>	<b>172,889</b>	<b>51,710</b>	<b>30%</b>
<b>Calves YTD:</b>	<b>184,086</b>			<b>Adult YTD:Cattle</b>		<b>40,384</b>	

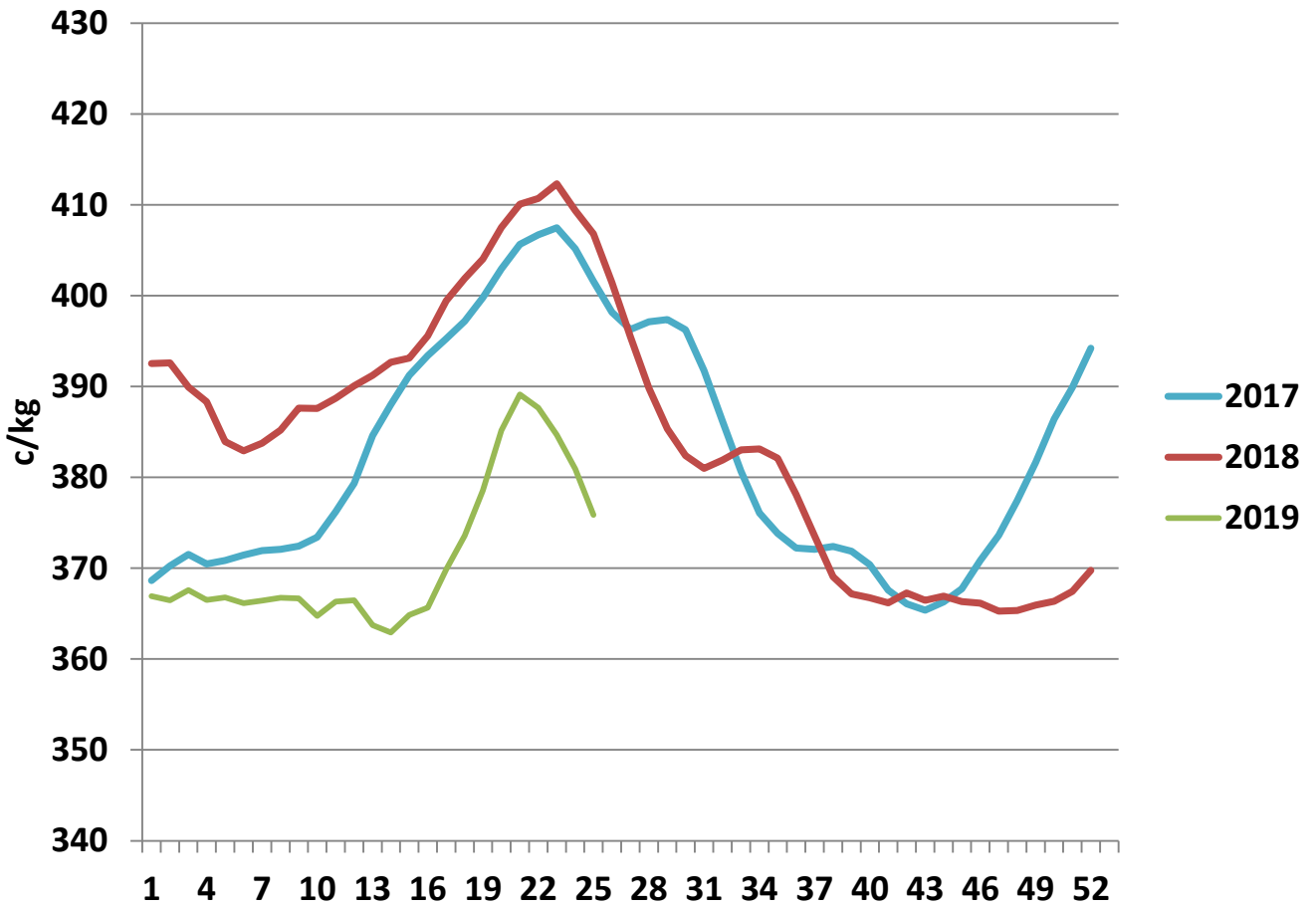
## Irish Deadweight Cattle Prices vs Selected Other Markets, 2019



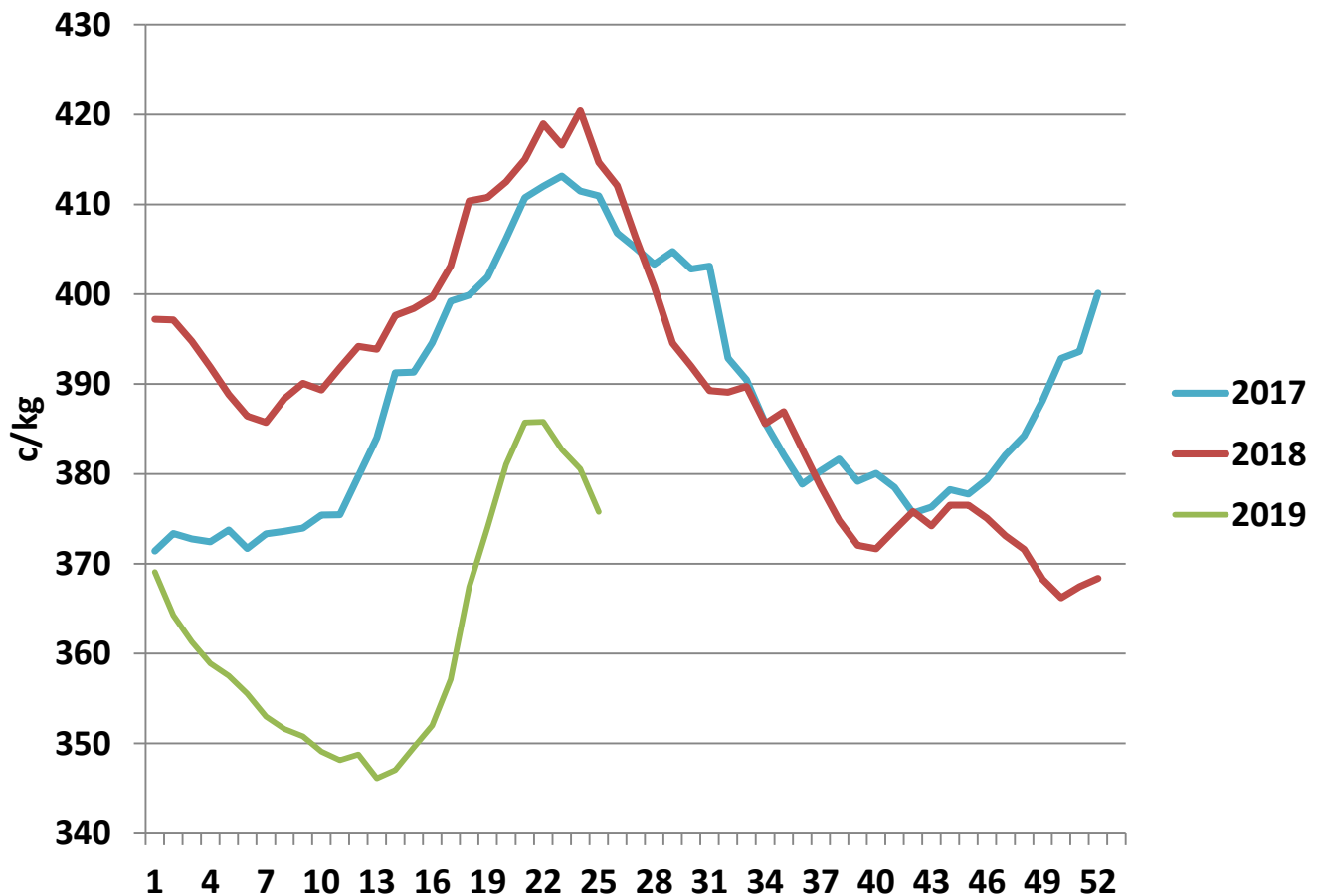
### Livestock Pricing

	Ireland	NI	Britain	EU 14 Average	France	Germany
W/C 10/06/19	380.9	381.1	386.73	364.74	373	340.8

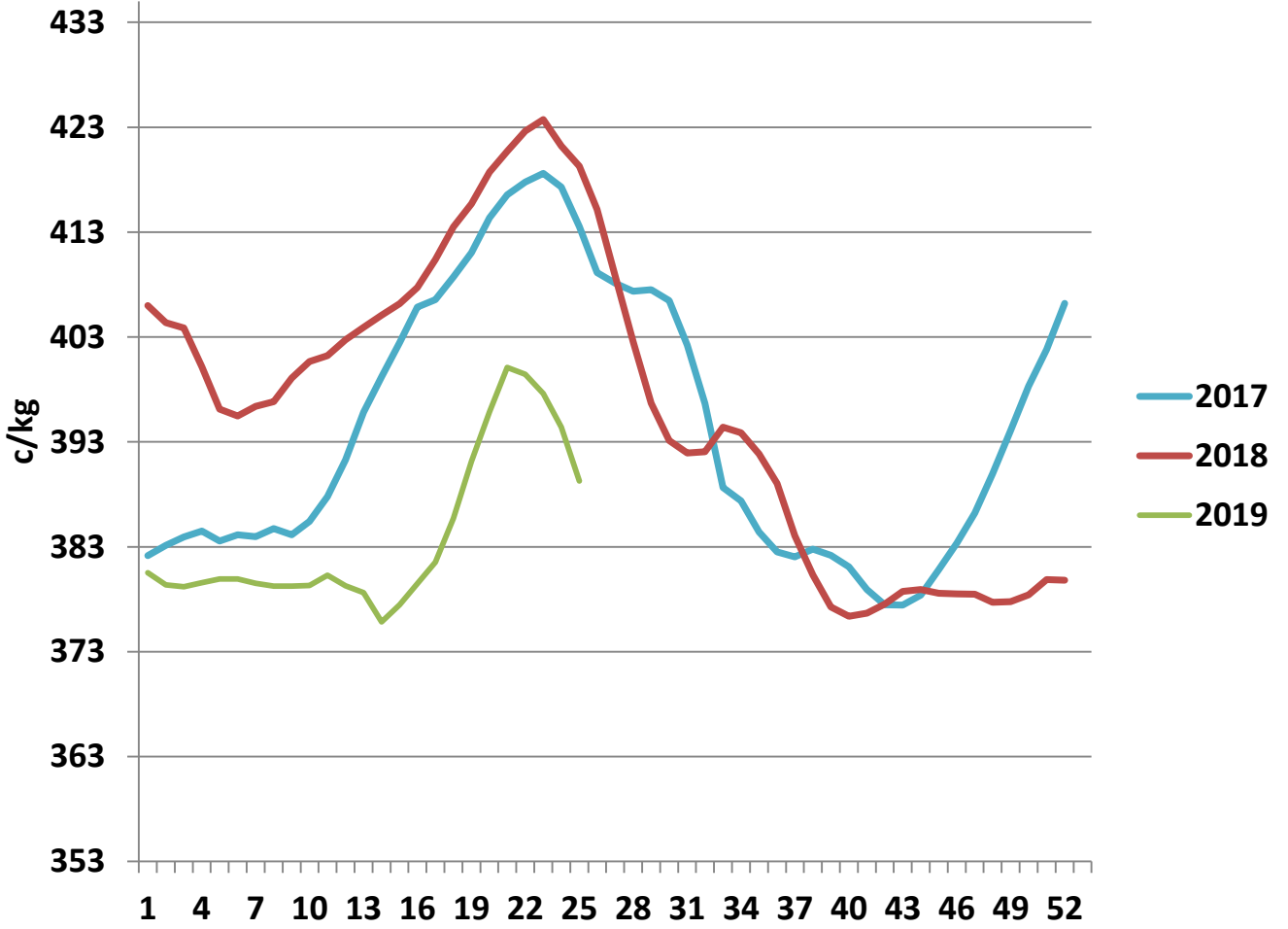
### R3 Steer prices ex. VAT



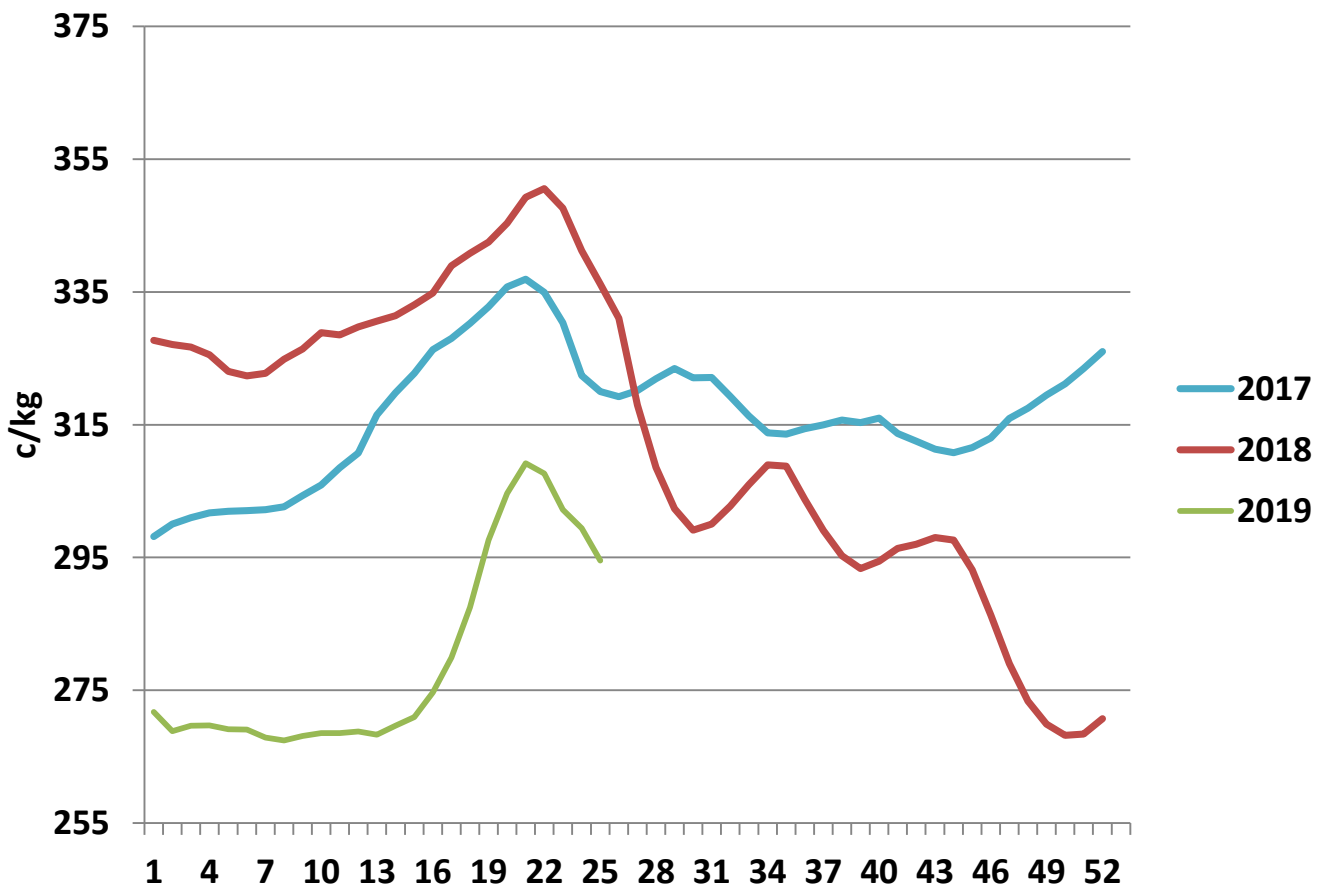
### U3 Young Bull prices ex. VAT

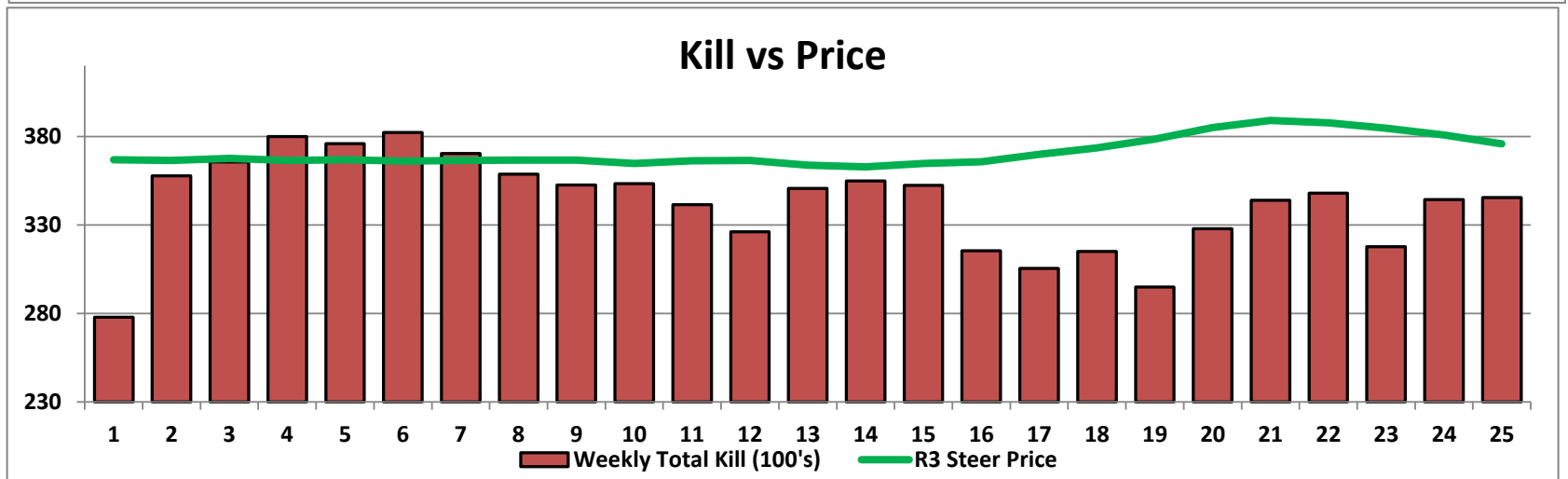
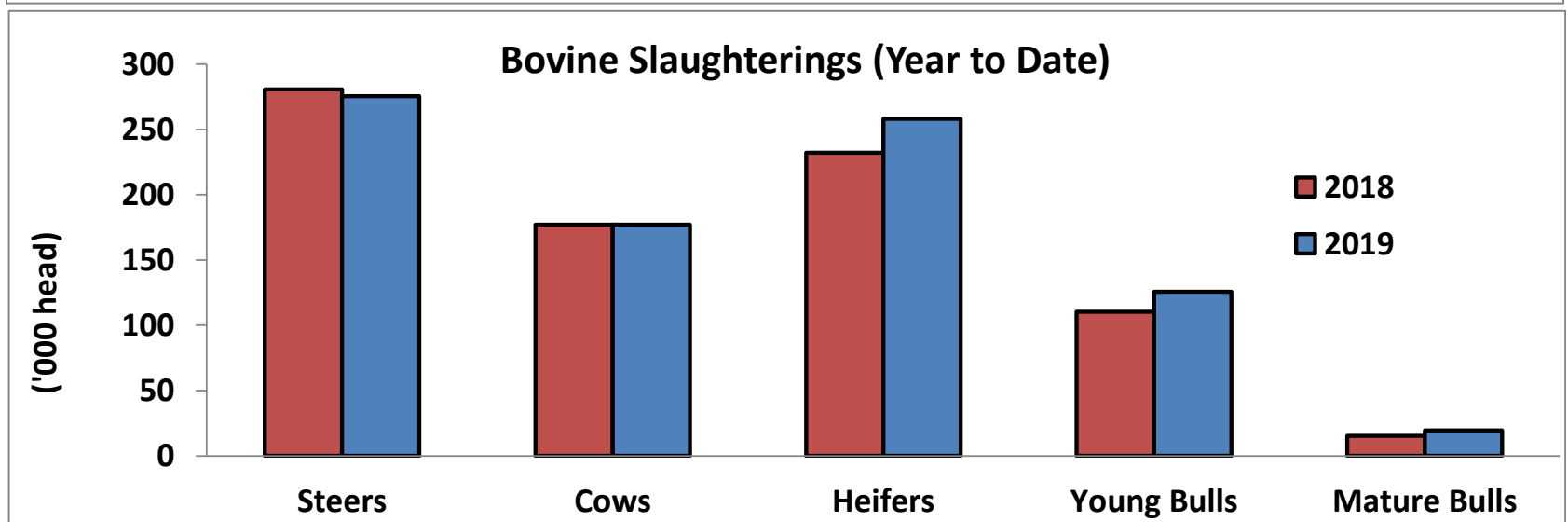
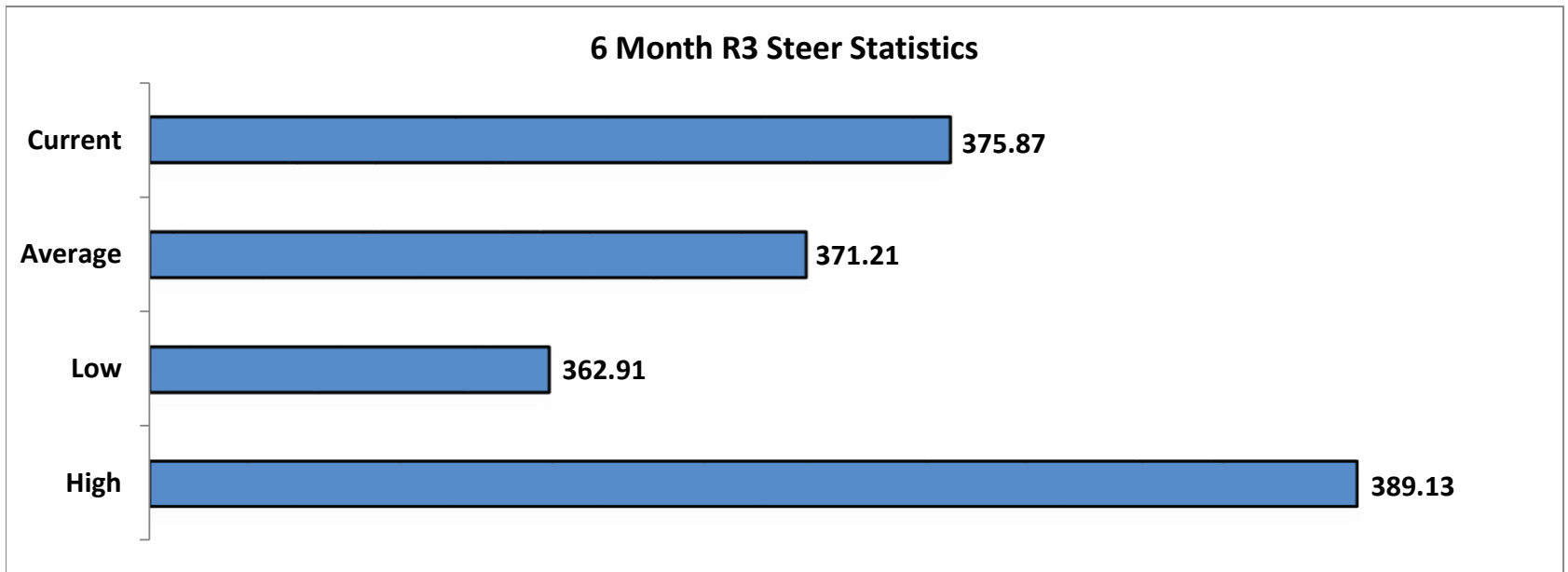


### R3 Heifer prices ex. VAT



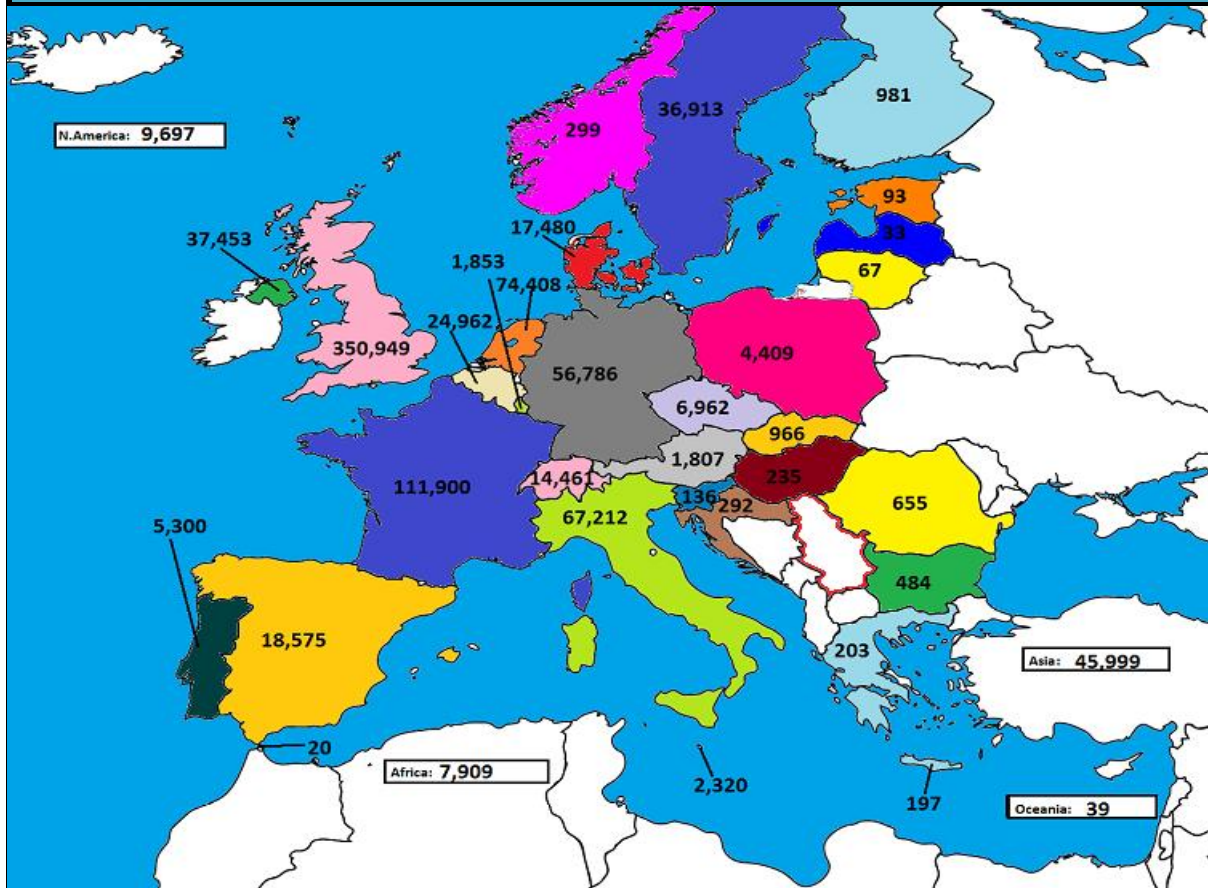
### O4 Cow prices ex. VAT



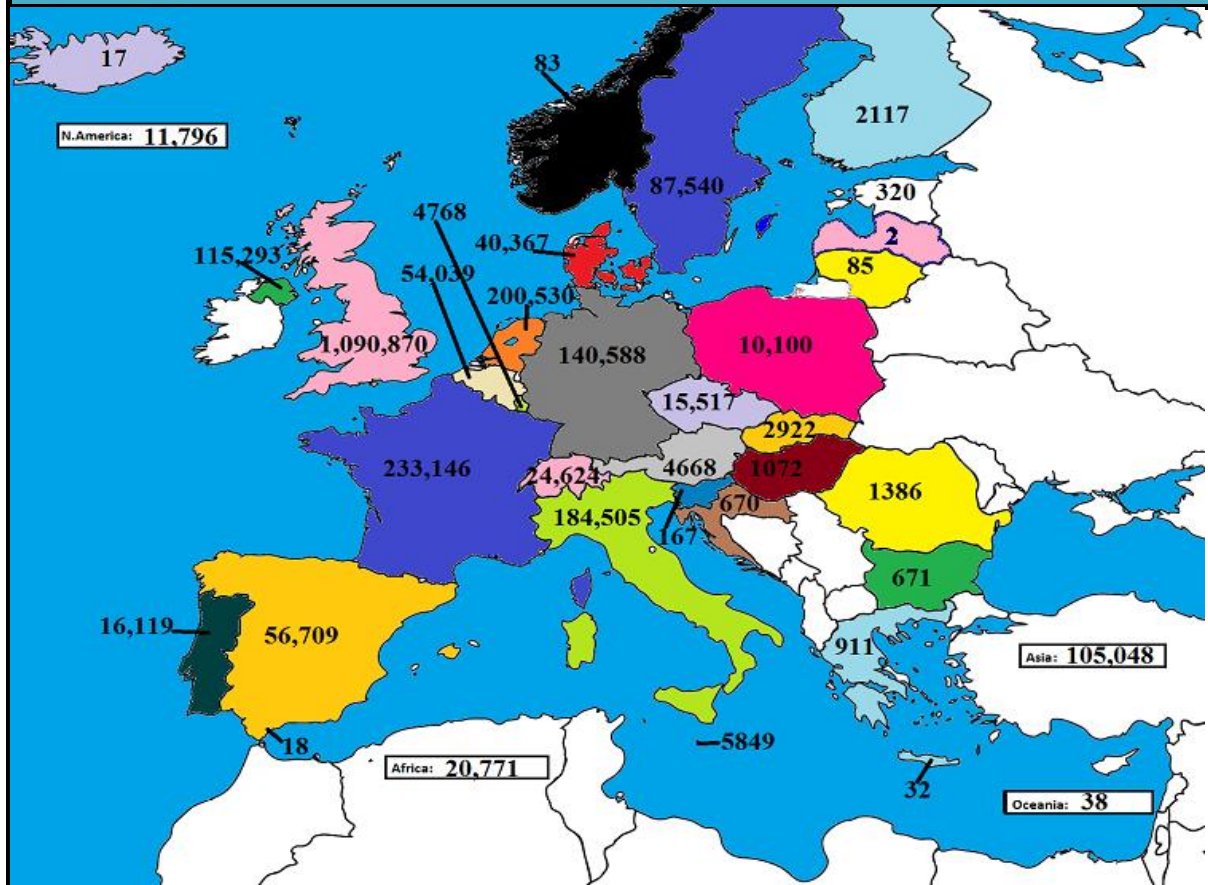




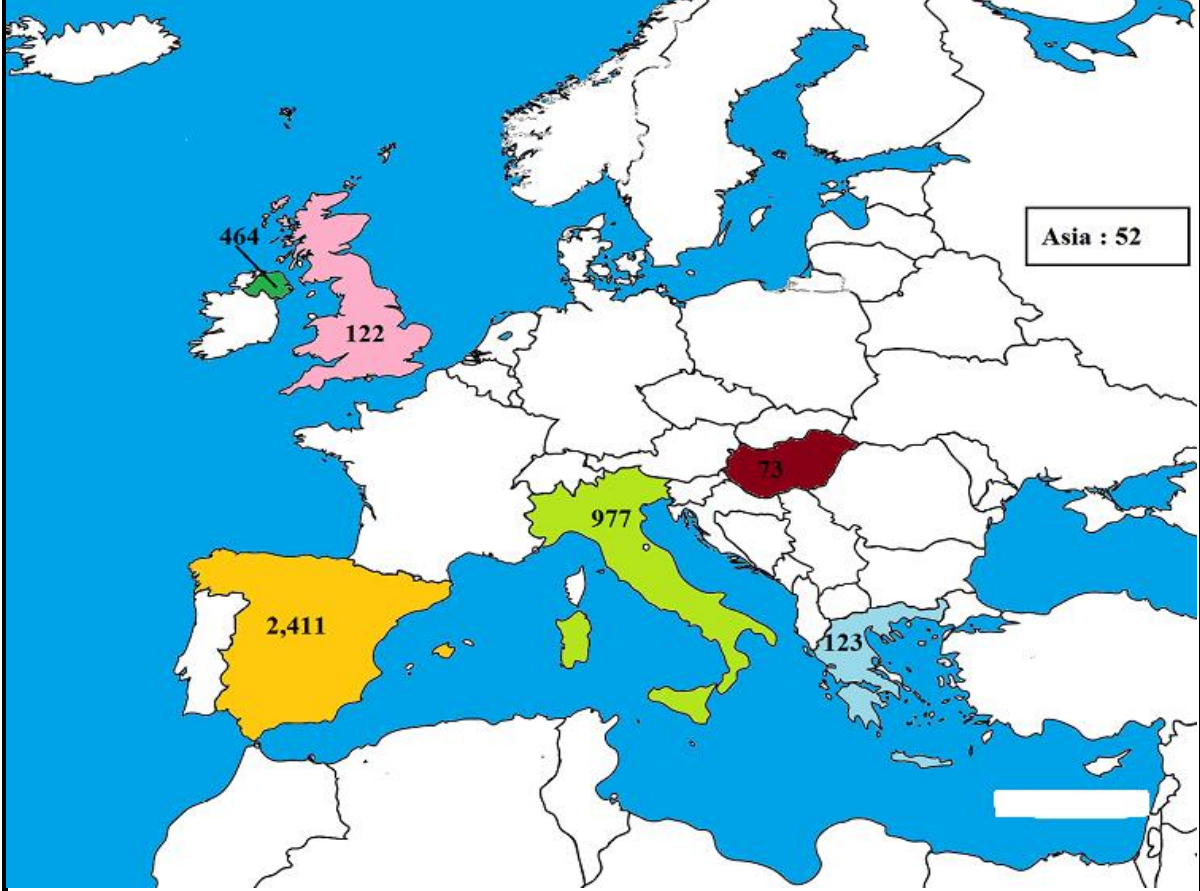
**April 2019 Beef exports, €000 (CSO figures)**



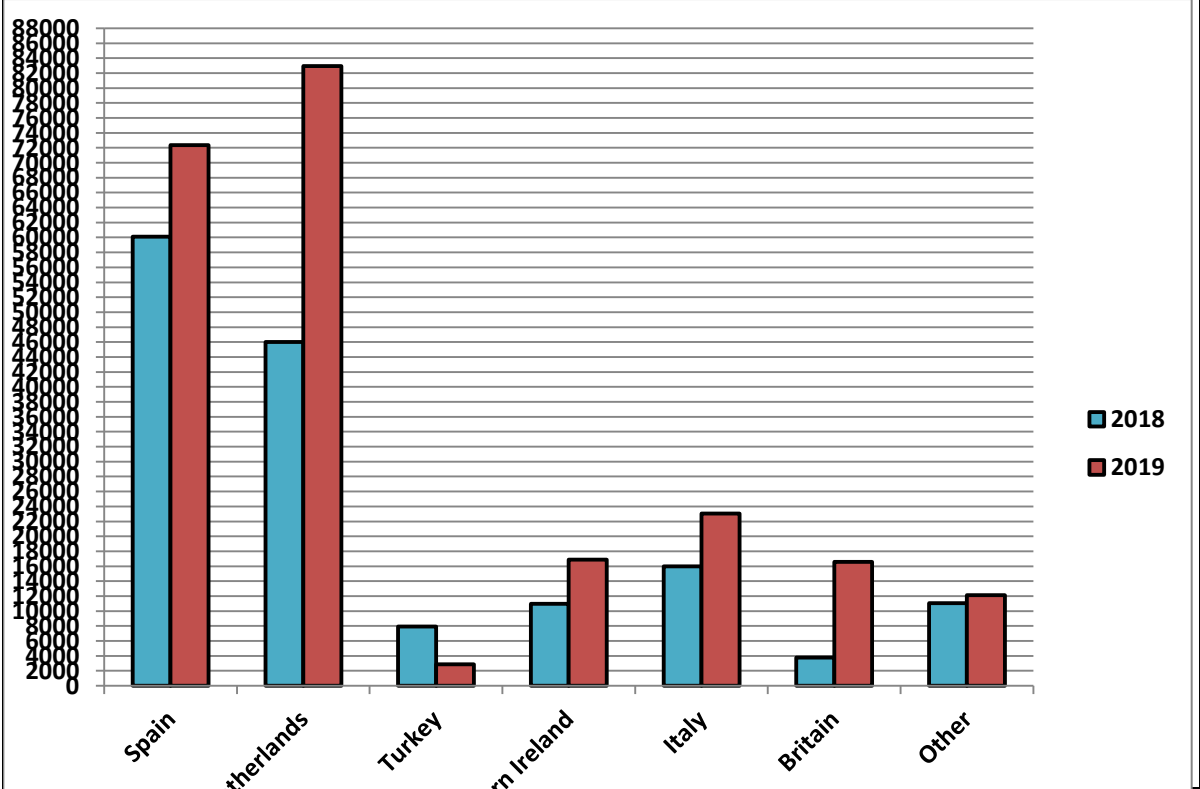
**Cumulative beef exports to Dec 2018, €000 (CSO figures)**

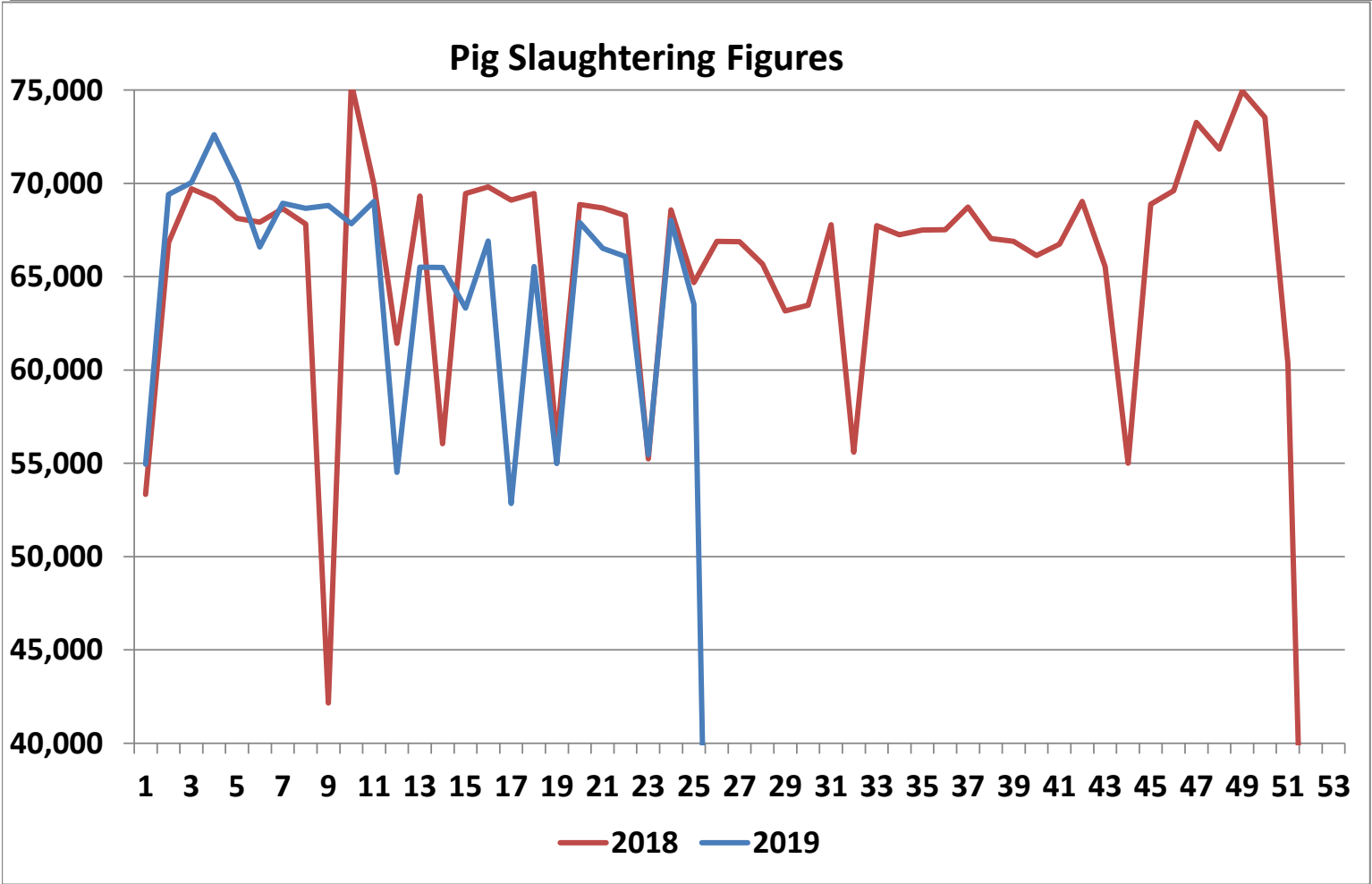
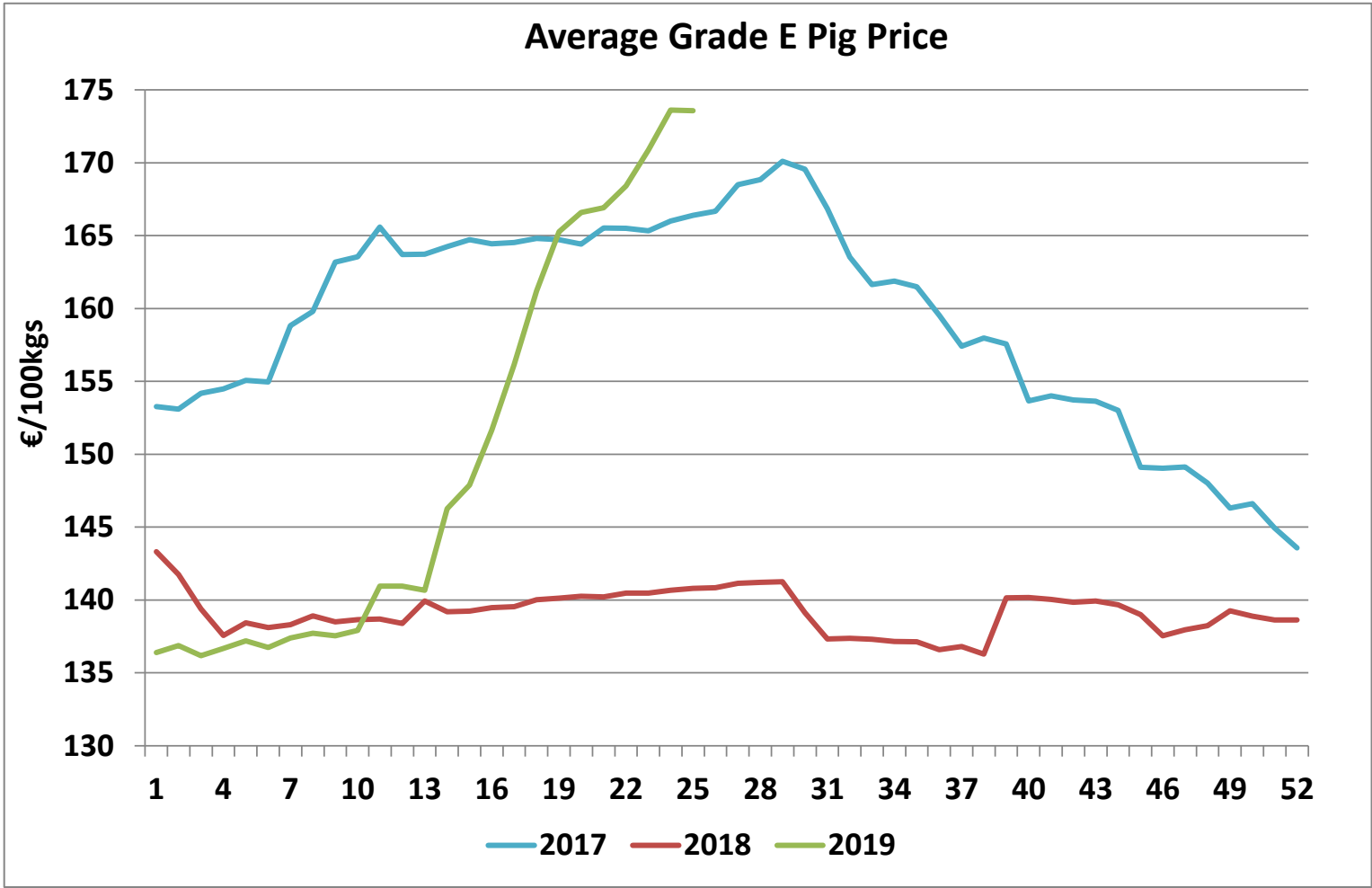


Cattle exported, w/c 17/06/19



Cumulative cattle export figures, 2019





**Sheepmeat Information for Week 25**

Irish Prices €/100 kg	2019	2018	Change
Ave Factory Price	516.71	563.01	-8.2%
Ave Mart Price	462.41	482.46	-4.2%
National Ave Price	500.42	538.84	-7.1%
YTD Ave	494.04	526.29	-6.1%

Slaughterings	2019	2018	Change
Weekly	56,726	57,926	-2%
YTD	1,193,892	1,277,247	-7%

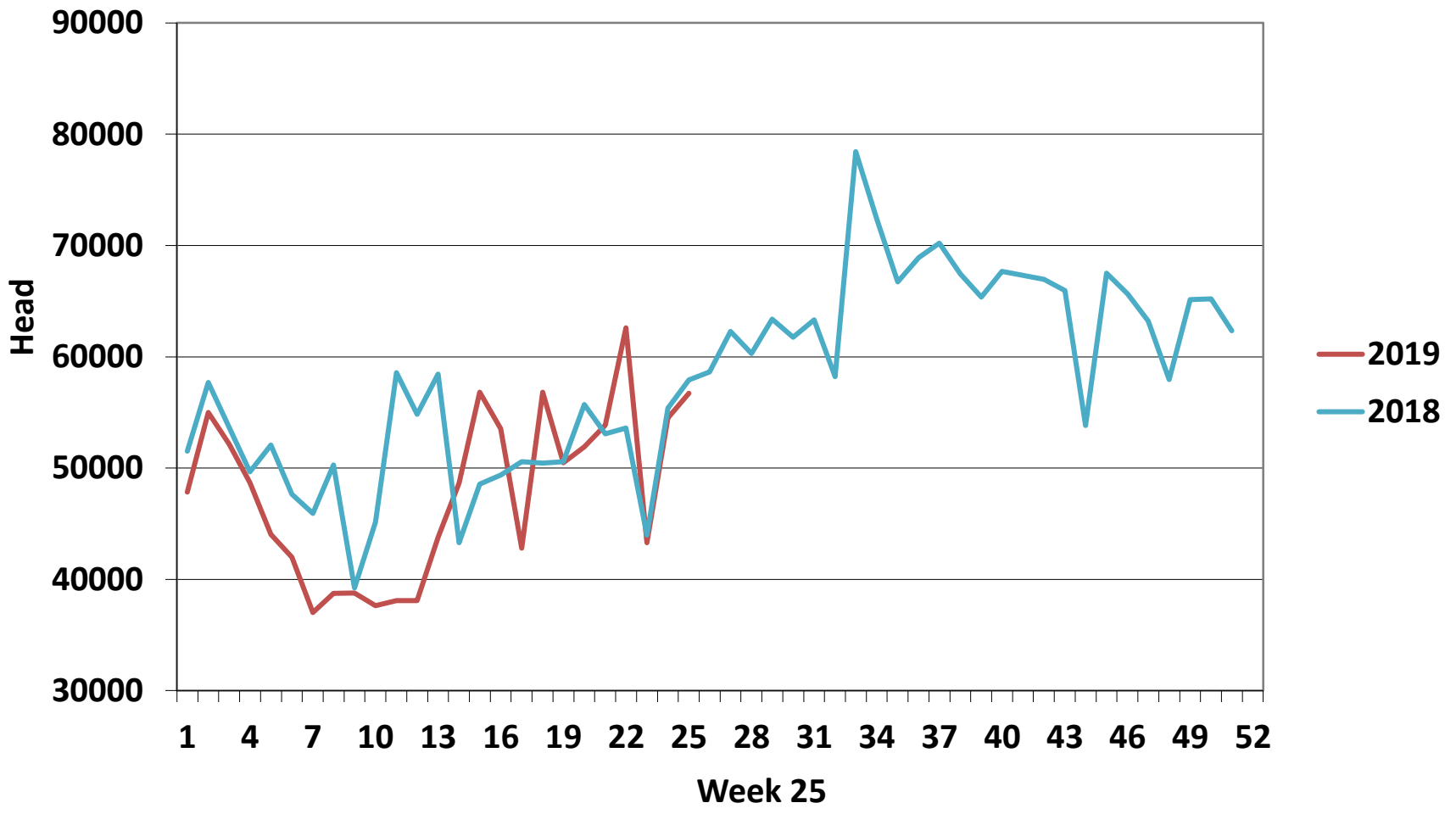
EU Market Rates Heavy Lambs	€/100kg	% of Community Price
Belgium	516.1	98%
Denmark	512.7	97%
Germany	531.8	101%
Spain	484.8	92%
France	594.0	113%
Croatia	504.3	96%
Ireland	564.3	107%
Italy	535.0	102%
Cyprus	451.0	86%
Latvia	409.3	78%
Lithuania	386.9	73%
Netherlands	533.3	101%
Austria	545.0	104%
Poland	445.6	85%
Romania	221.0	42%
Finland	358.8	68%
Sweden	550.0	104%
Northern Ireland	464.2	88%
Great Britain	506.0	96%
United Kingdom	503.0	96%
Community	526.5	100%

**REPORT ON SLAUGHTERING AT SHEEP EXPORT PREMISES  
WEEK 25**

CATEGORY	2019		2018		DIFFERENCE	
	Weekly	Cumulative	Weekly	Cumulative	Weekly	Cumulative
Lambs/Hoggets	2,375	733,335	3,609	824,519	-1,234	91,184
Spring Lambs	47,911	285,926	45,459	242,901	2,452	43,025
Ewes and Rams	6,422	174,579	8,848	209,706	-2,426	35,127
Light Lambs	18	52	10	121	8	69
<b>TOTAL</b>	<b>56,726</b>	<b>1,193,892</b>	<b>57,926</b>	<b>1,277,247</b>	<b>-1,200</b>	<b>-83,355</b>



### Weekly Sheep Slaughtering



### Ave. Price €/100 kg for Sheepmeat

