

Meat Market Report

24/06/19 - 30/06/19

Week
26



**An Roinn Talmhaíochta,
Bia agus Mara**
Department of Agriculture,
Food and the Marine

MARKET SUMMARY

Beef

Deadweight Prices c/100Kg (Including VAT)

	U3	U4	R3	R4	O3	O4	P+
Steers	401.7	398.7	390.4	390.1	374.6	375.9	349.4
Heifers	419.2	420.1	405.1	403.3	388.1	385.9	352.3
Young Bulls	395.3	401.2	380.8	382.5	352.0	365.0	336.1
Cows			326.6	326.7	305.3	305.6	296.2

Liveweight Prices

*Bull Calf Average Price	€159.6 per head (Excluding VAT)
**Young Store Average Price	€217.0 per 100kg (Excluding VAT)
***Yearling (male & female) Price	€192.0 per 100kg (Excluding VAT)

* Aged 8-28 days ** Aged 180-364 days, Male & Female ***age 365-730 days

Slaughtering

35,168 cattle slaughtered this week, of which steers were 11,396 (32%), heifers 10,124 (29%), young bulls 4,889 (14%) and cows 7,840 (22%). Total YTD slaughter is 891,060 compared to 849,420 in 2018, a 5% increase.

Live Trade

4,222 cattle were exported in the week commencing 17/06/2019*; 3,706 to EU (Except NI). Live exports for 2019 amount to 224,599 compared to 172,889 in 2018, up 30% on 2018 levels.

*This data is provisional and subject to revision.

The next meeting of the Management Committee for the Common Organisation of Agricultural Markets (Animal Products Sector) is 18th July 2019

CONTENTS:

Page 2: Market Summary Beef
 Page 3: Market Summary Other Meats
 Page 4: Beef Price and Slaughter Summary
 Page 5: Comparative Beef Prices
 Page 6: Steer and Young Bull Price
 Page 7: Heifer and Cow Graphs
 Page 8: Price and Slaughter Graphs
 Page 9: Liveweight Beef Graphs

Page 10: Beef Export Maps
 Page 11: Beef Export Info
 Page 12: Pig price and slaughter graphs
 Page 13: Sheep prices and slaughter
 Page 15: Sheep price and slaughter graphs

MARKET SUMMARY

Pigmeat

Grade E Pig
Prices (Ex.
VAT)

The Grade E Pig price for week commencing 24/06/2019 was €174.18 per 100Kg compared to €140.84 in the same week last year, which represents a 24% increase.

Slaughtering

66,671 pigs were slaughtered in week 26 of which 1,671 were sows. The cumulative figure for pig slaughterings in 2019 is 1,690,262 which is a 1% decrease with the same point last year.

Sheepmeat

Sheepmeat
Prices (Ex.
VAT)

The national average price for the week commencing 24/06/2019 was €461.50 per 100Kg, a decrease of 10.4% over the same week last year.

Slaughtering

58,904 sheep were slaughtered at sheep export premises the week commencing 24/06/2019, compared to 58,649 in the same week of 2018. Sheep slaughterings for 2019 are 6% down on 2018 at 1,252,796 head.

Live Trade

Total live exports to European Countries stood at 20,769 head to the end of 2018.

Poultry

Slaughtering

Cumulative poultry slaughterings for 2019* stand at 52,943,822 birds at the end of week 26, up 9% compared to the same period last year.

*Latest Figures are provisional and subject to change

Dead Weight Prices	W/C	W/C	Same week 2018	% change prev week	% change 2018
	24/06/19	17/06/19	25/06/18		
Steers (R3) (c/kg)	370.4	375.9	401.4	-1.5%	-7.7%
Heifers (R3) (c/kg)	384.3	389.3	415.2	-1.3%	-7.4%
Young Bulls (U3) (c/kg)	375.0	375.8	412.1	-0.2%	-9.0%
Cows (04) (c/kg)	289.9	294.6	331.0	-1.6%	-12.4%

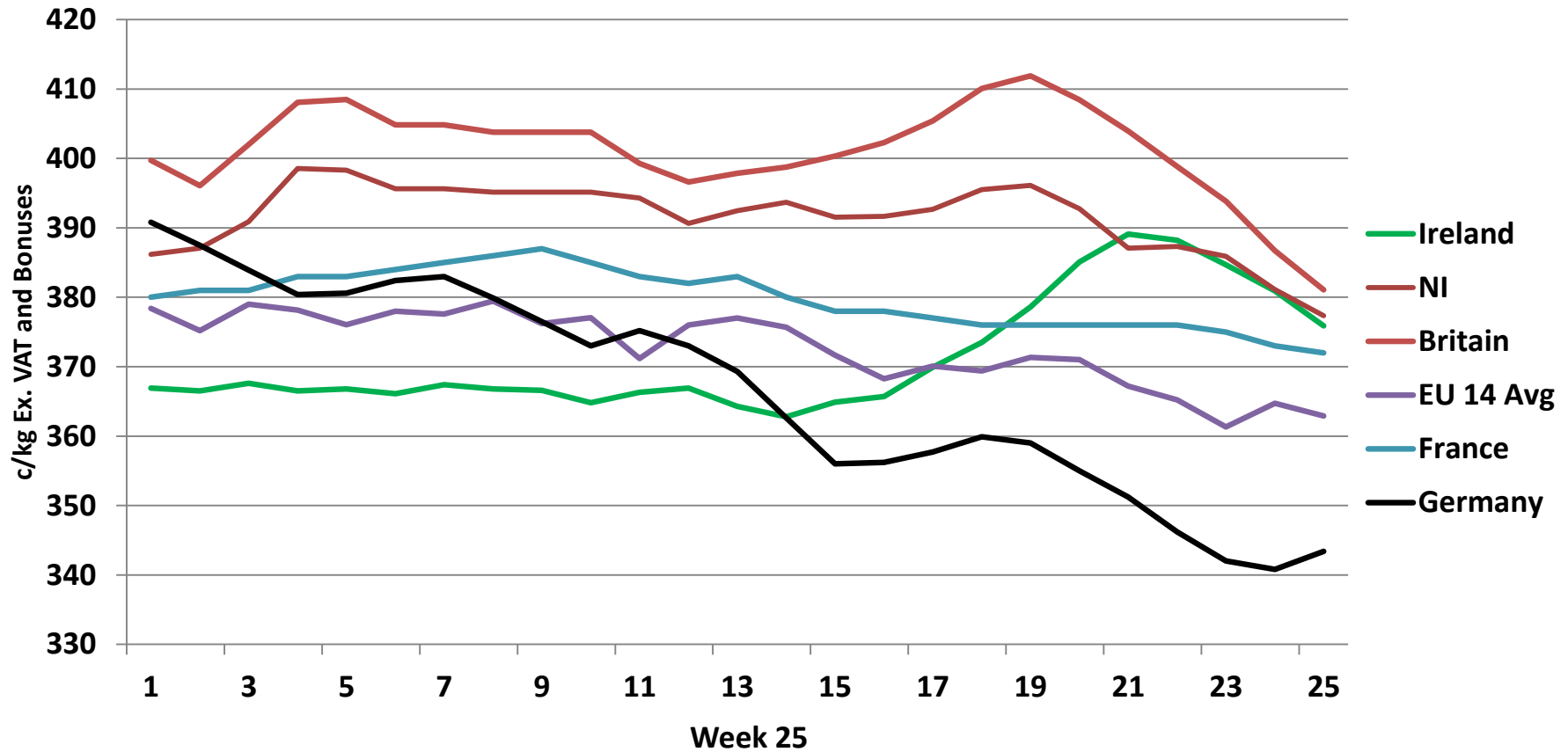
Live Weight Prices	W/C	W/C	Same week 2018	% change previous week	% change 2018
	24/06/19	17/06/19	25/06/18		
Yearlings (Male) (Aged 365 - 730 days) - (€/100Kg)	189	193	195	-2.1%	-3.1%
Yearlings (Female) (Aged 365 - 730 days) - (€/100Kg)	195	202	205	-3.5%	-4.9%
Young Stores (Male & Female) (Aged 180 - 364 days) - (€/100Kg)	217	219	230	-0.9%	-5.7%
Bull Calf (€/head) Dairy	136.4	140.8	163.7	-3.2%	-16.7%
Bull Calf (€/head) Beef	182.8	179.3	220.3	2.0%	-17.0%
Bull Calf (€/head) Average	159.6	160.1	192.0	-0.3%	-16.9%

Slaughter Figures	% of weekly figures	W/C	Same week 2018	Year to Date		Change 2019 v 2018	
		24-Jun-19		2019	2018	Head	%
Steers	32.4%	11,396	11,127	286,937	291,807	-4,870	-1.7%
Cows	22.3%	7,840	9,038	184,929	186,227	-1,298	-0.7%
Heifers	28.8%	10,124	8,865	268,099	240,967	27,132	11.3%
Young Bulls	13.9%	4,889	4,302	130,543	114,586	15,957	13.9%
Mature Bulls	2.6%	919	511	20,552	15,833	4,719	29.8%
Total	100%	35,168	33,843	891,060	849,420	41,640	4.9%

821

Live Exports	W/C	Same week	W/C	Year to Date		Change 2019 v 2018	
	17-Jun-19	2018	10-Jun-19	2019	2018	Head	%
Northern Ireland	464	338	436	17,023	8,895	8,128	91%
EU Except NI	3,706	2,967	4,225	199,677	154,910	44,767	29%
Third Countries	52	0	113	7,899	9,084	-1,185	-
Total	4,222	3,305	4,774	224,599	172,889	51,710	30%
Calves YTD:	184,086			Adult YTD:Cattle		40,384	

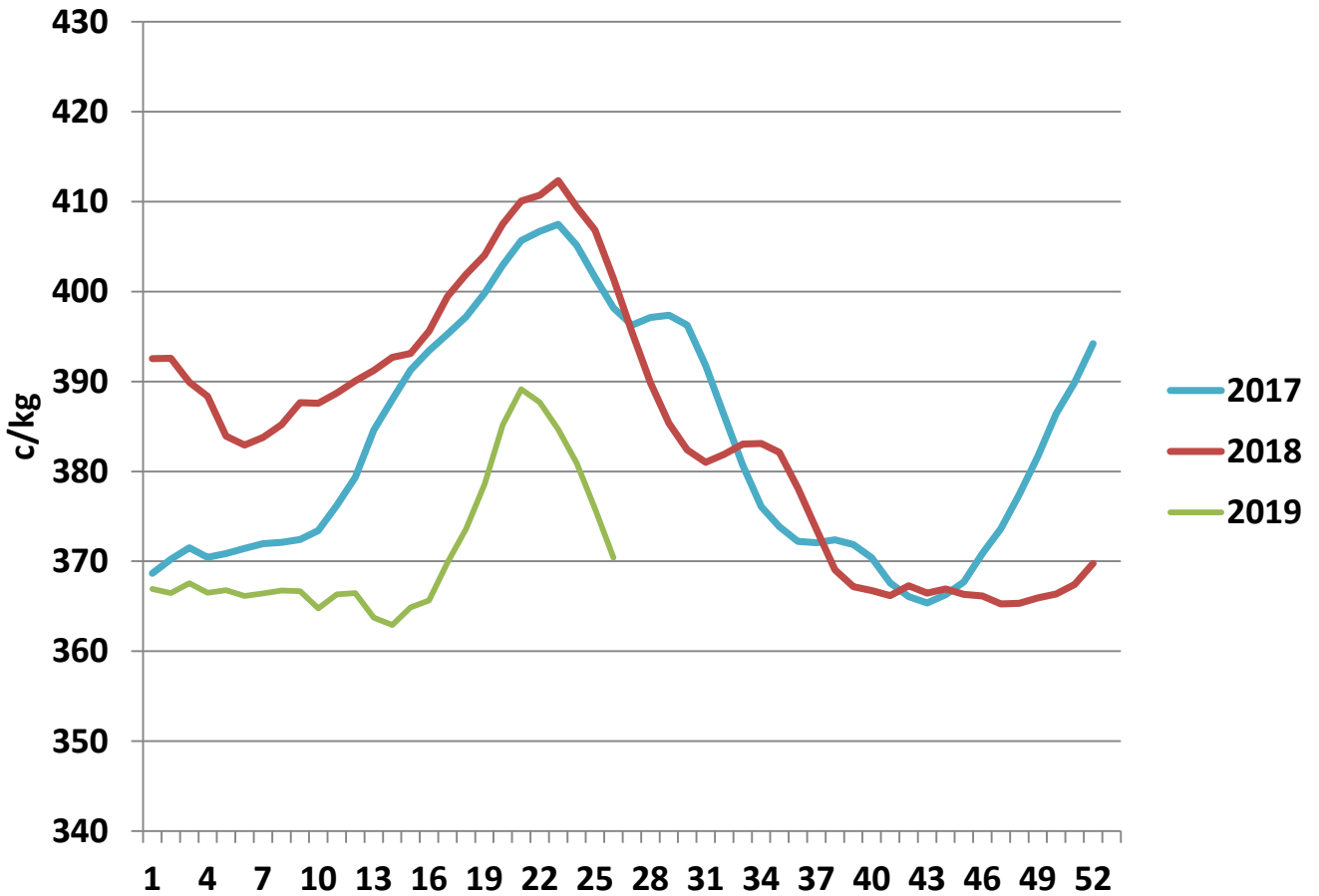
Irish Deadweight Cattle Prices vs Selected Other Markets, 2019



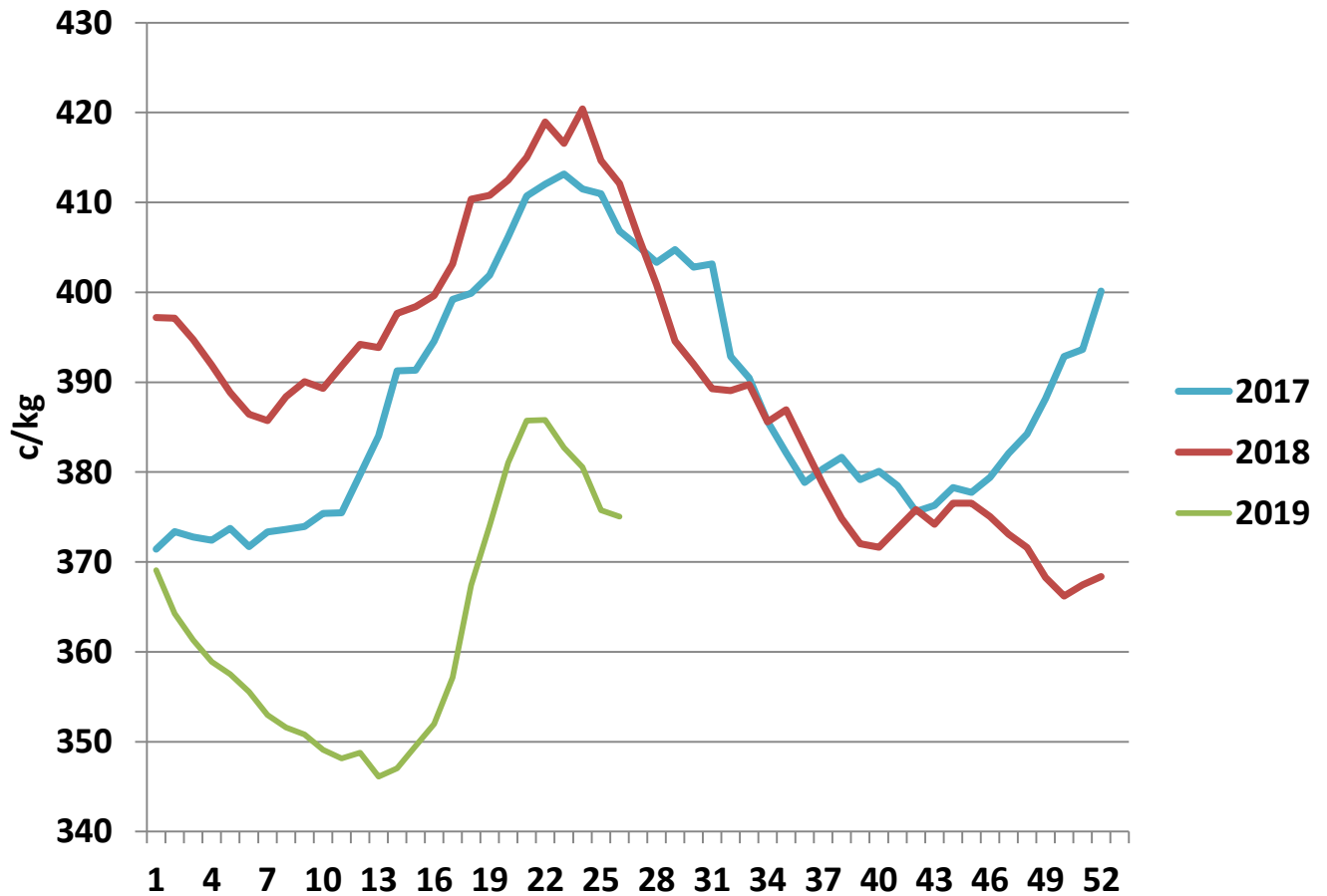
Livestock Pricing

	Ireland	NI	Britain	EU 14 Average	France	Germany
W/C 17/06/19	375.9	377.33	381.09	362.92	372	343.4

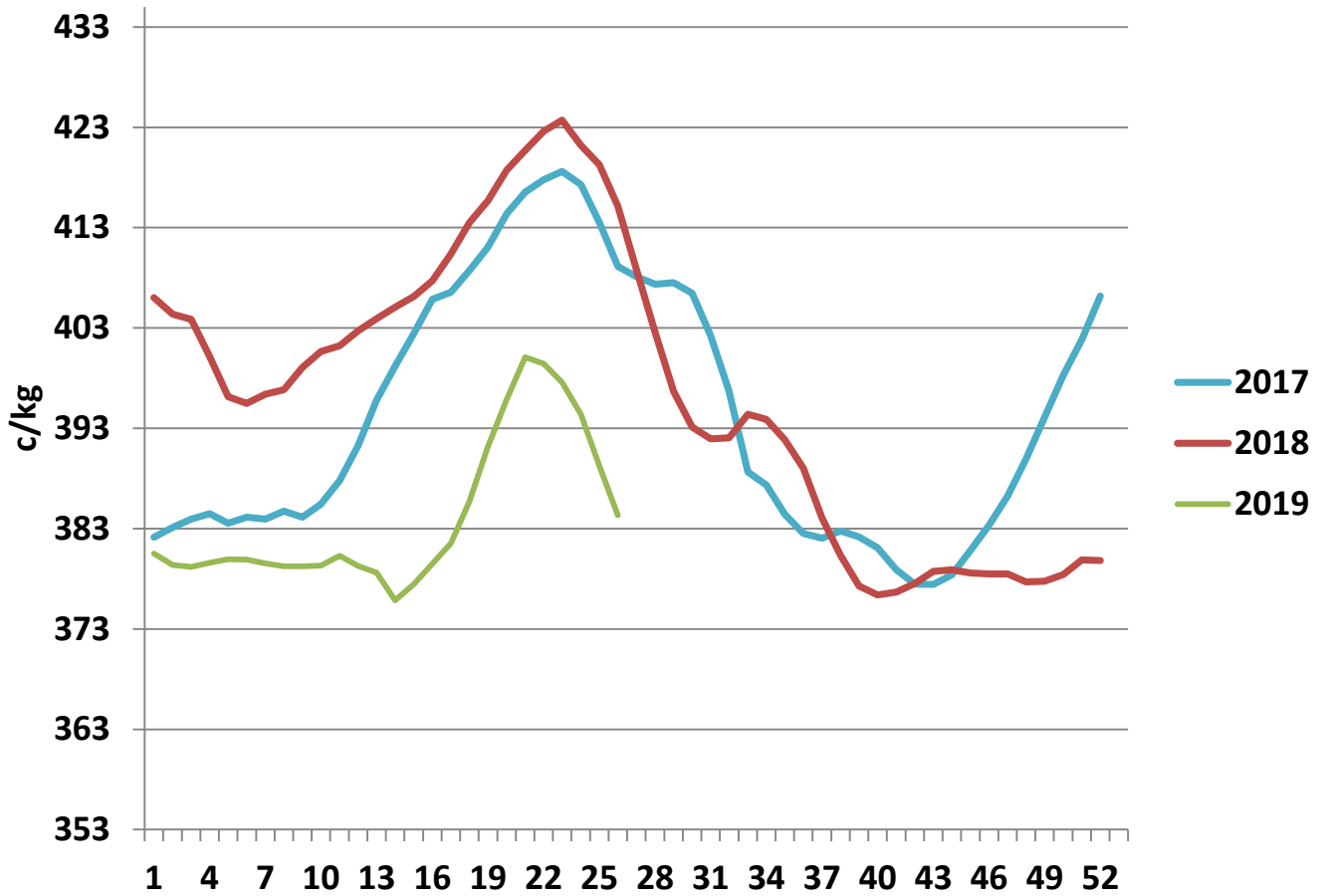
R3 Steer prices ex. VAT



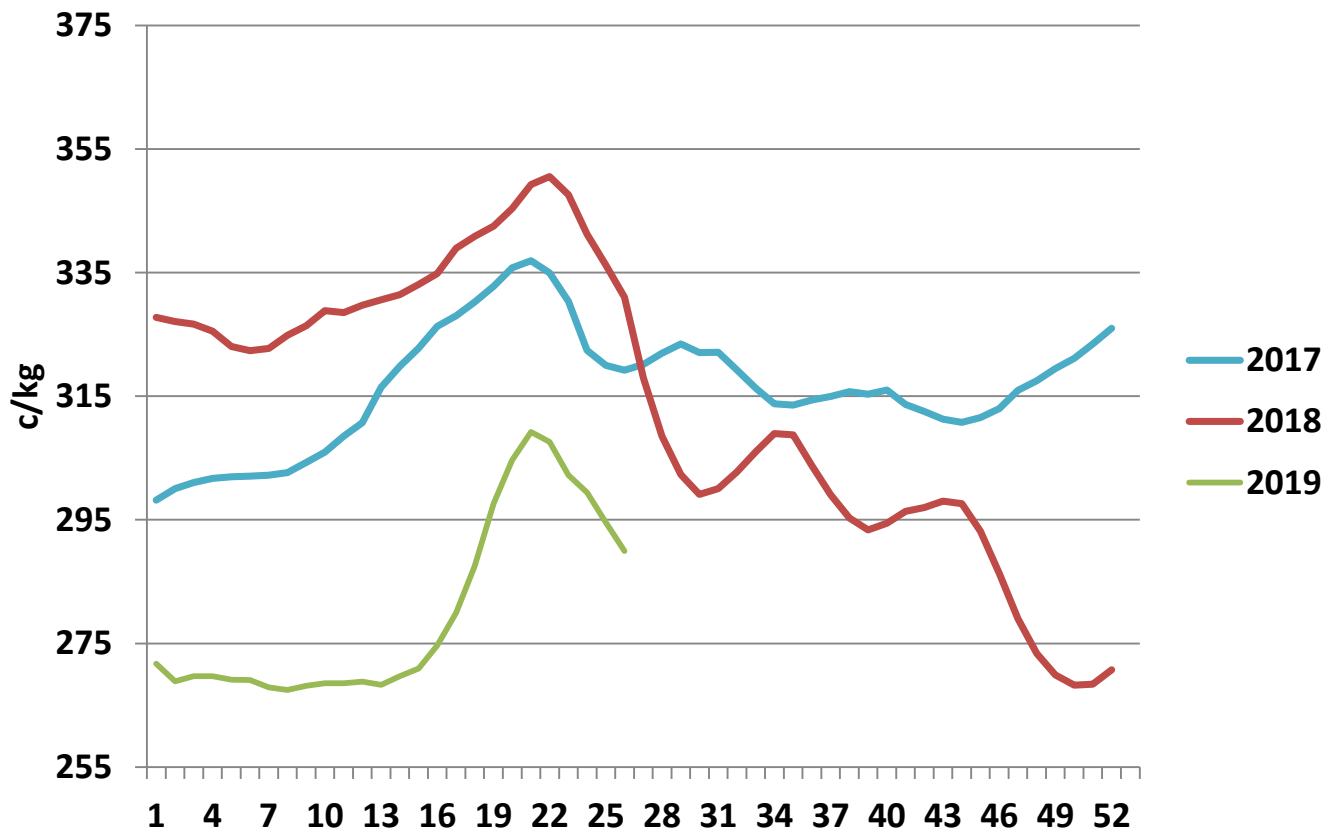
U3 Young Bull prices ex. VAT

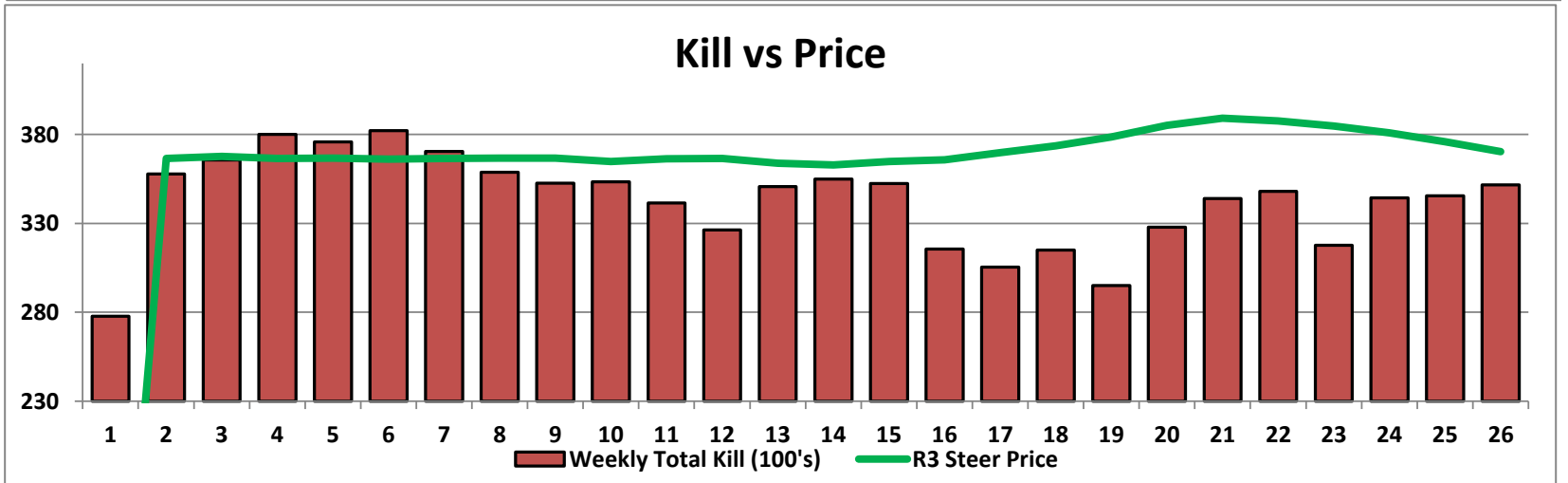
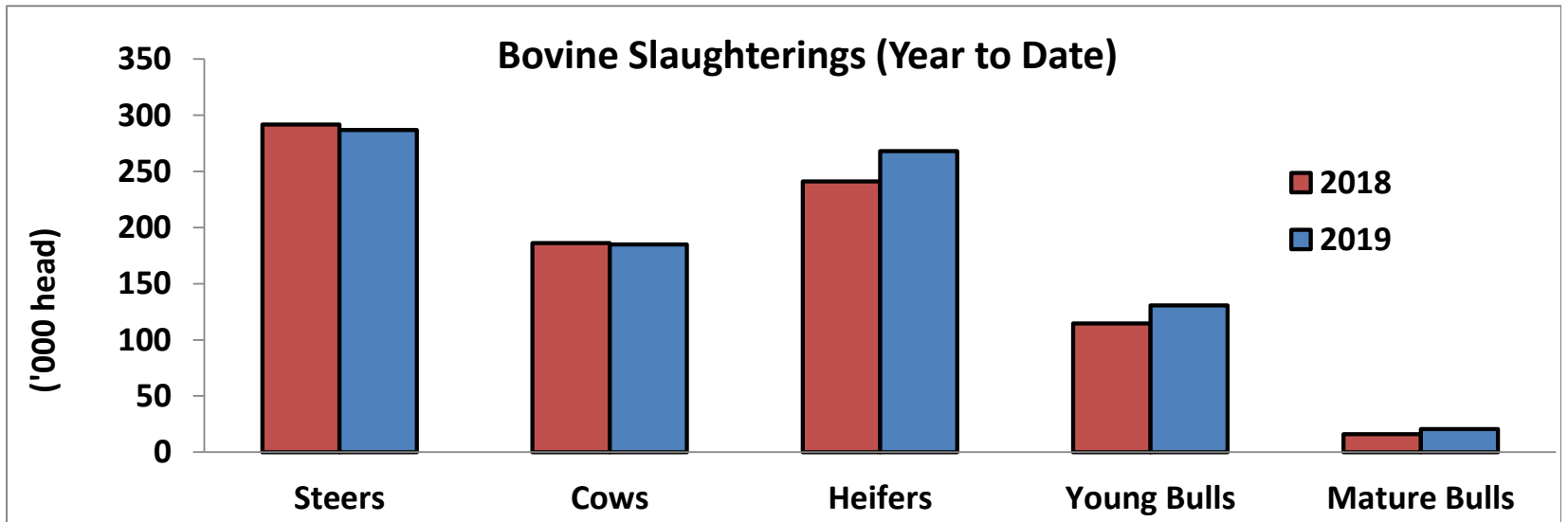
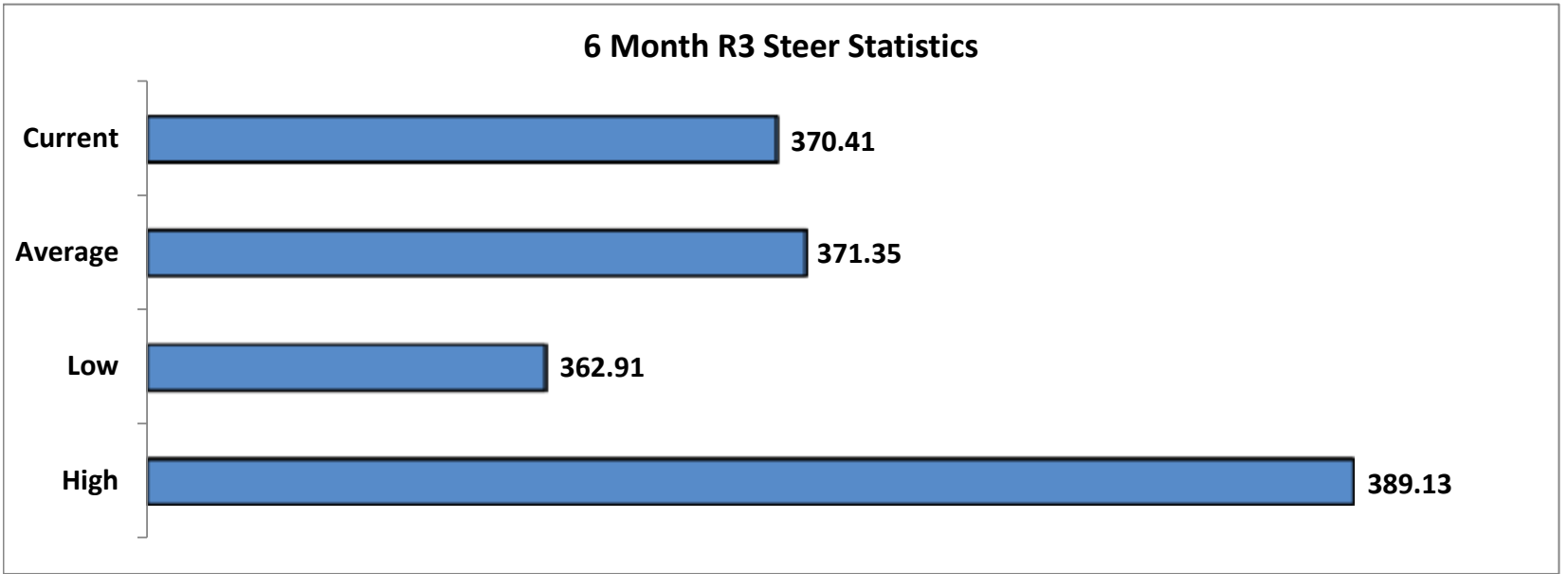


R3 Heifer prices ex. VAT

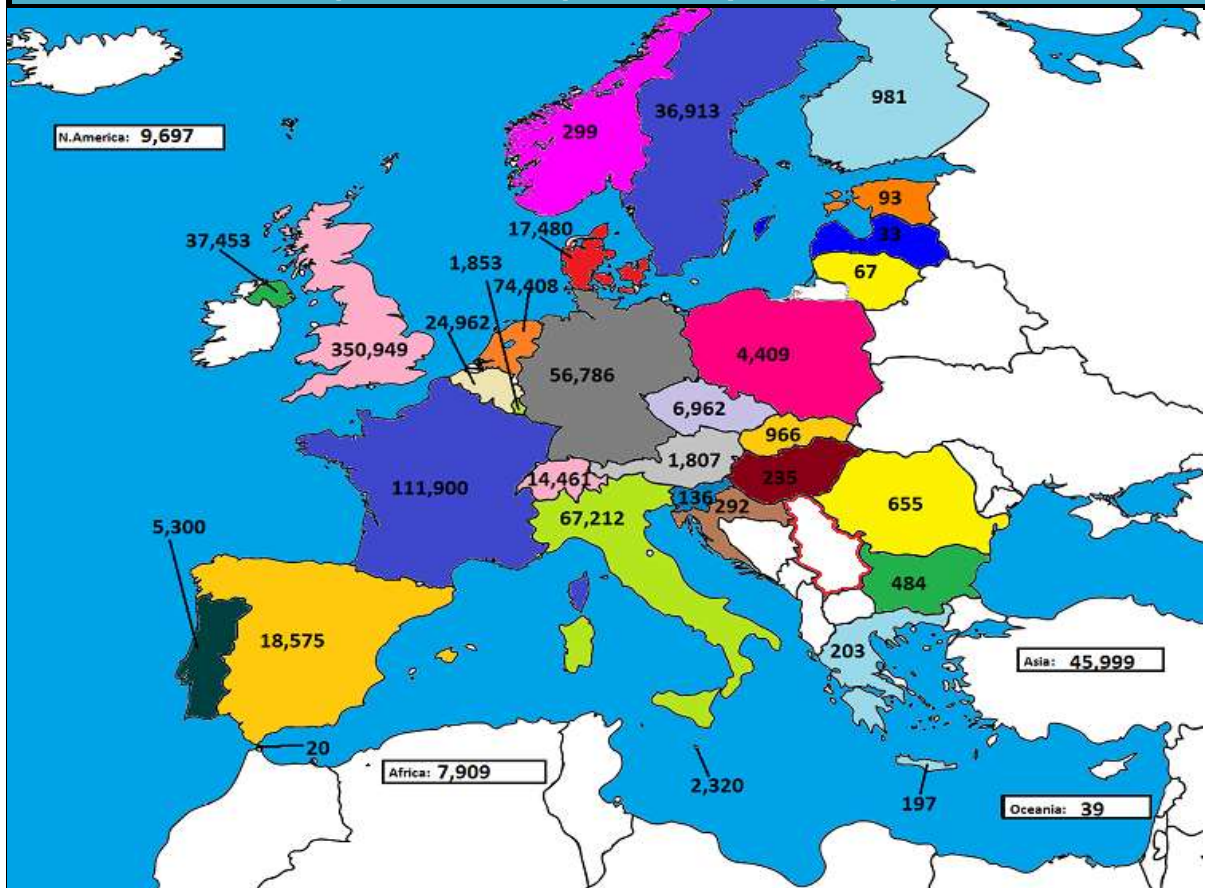


O4 Cow prices ex. VAT

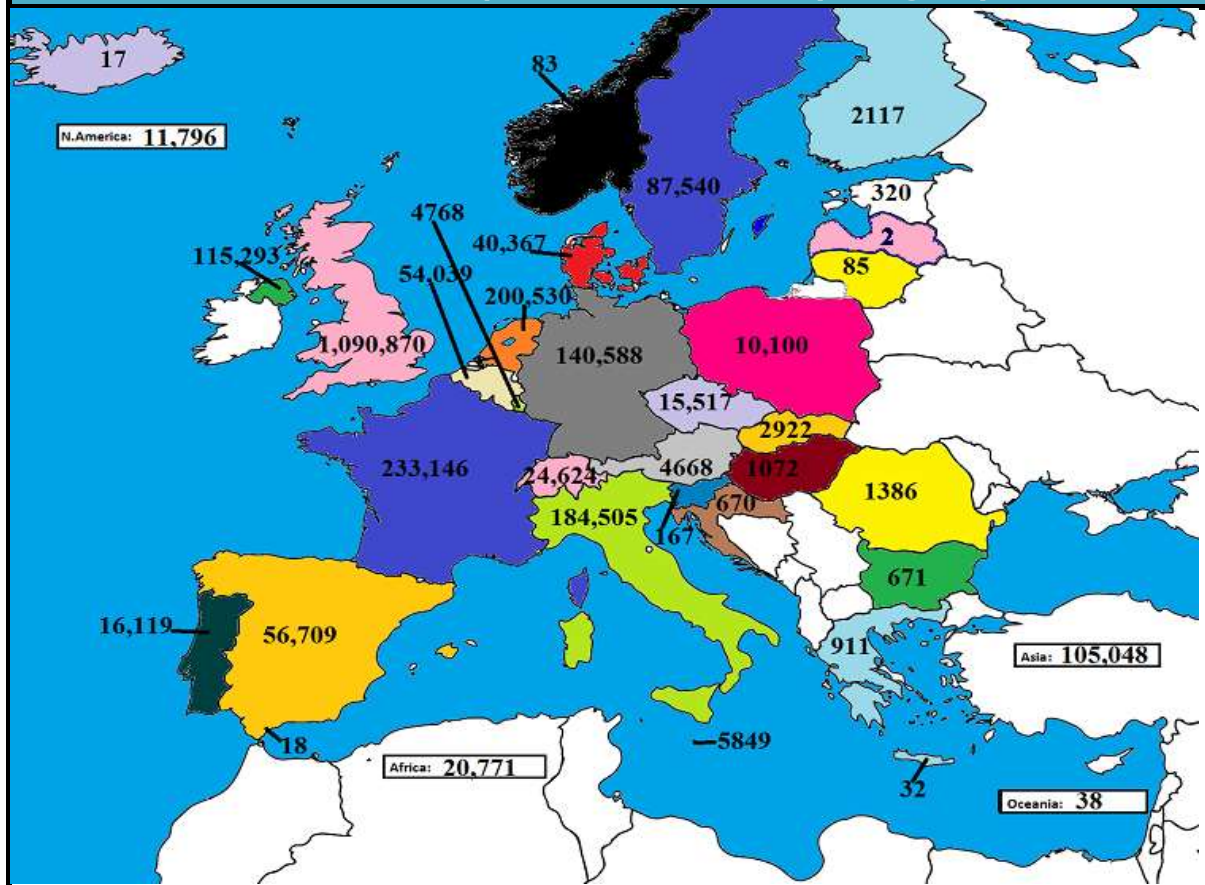




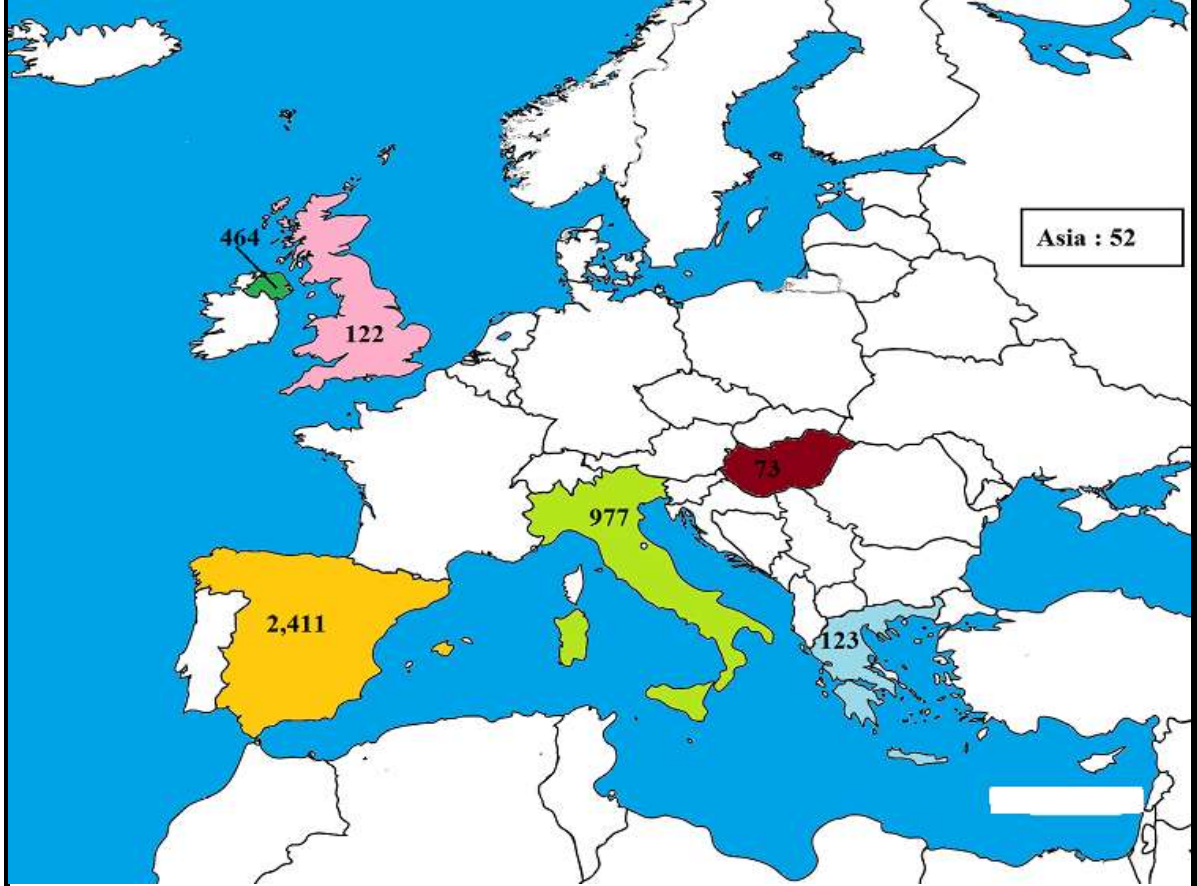
April 2019 Beef exports, €000 (CSO figures)



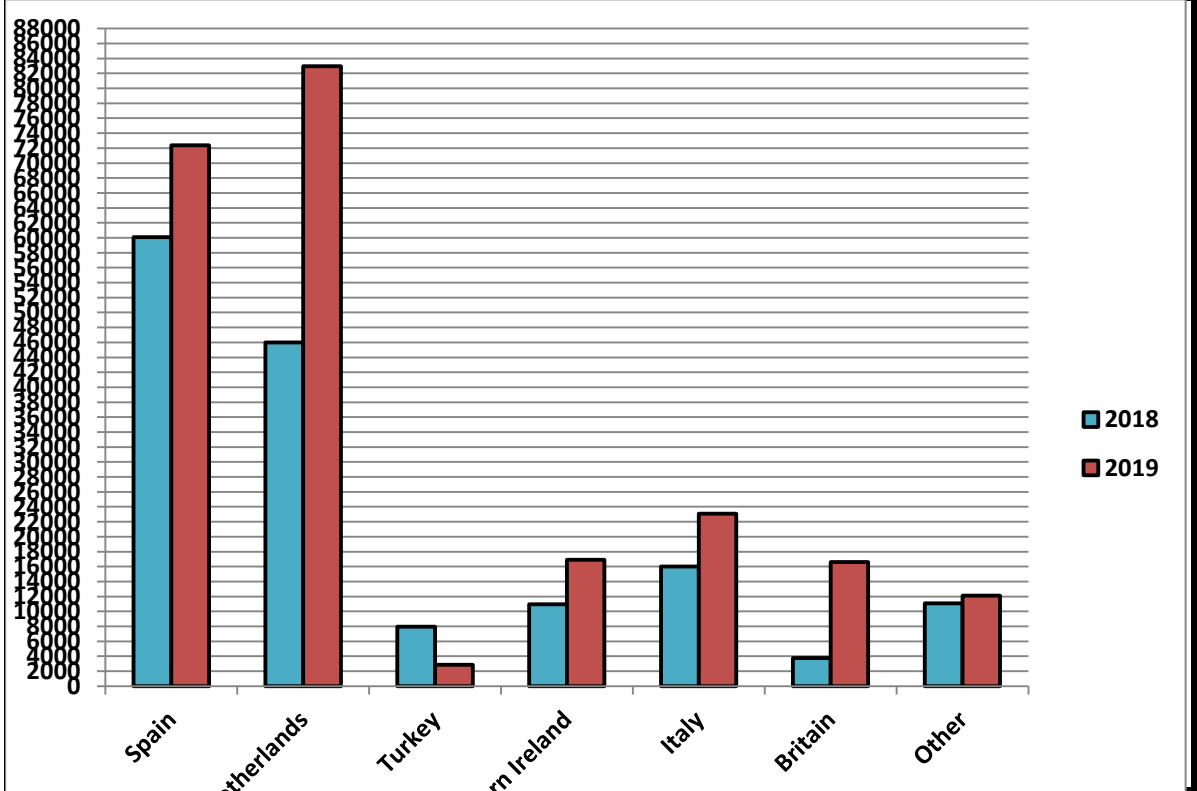
Cumulative beef exports to Dec 2018, €000 (CSO figures)

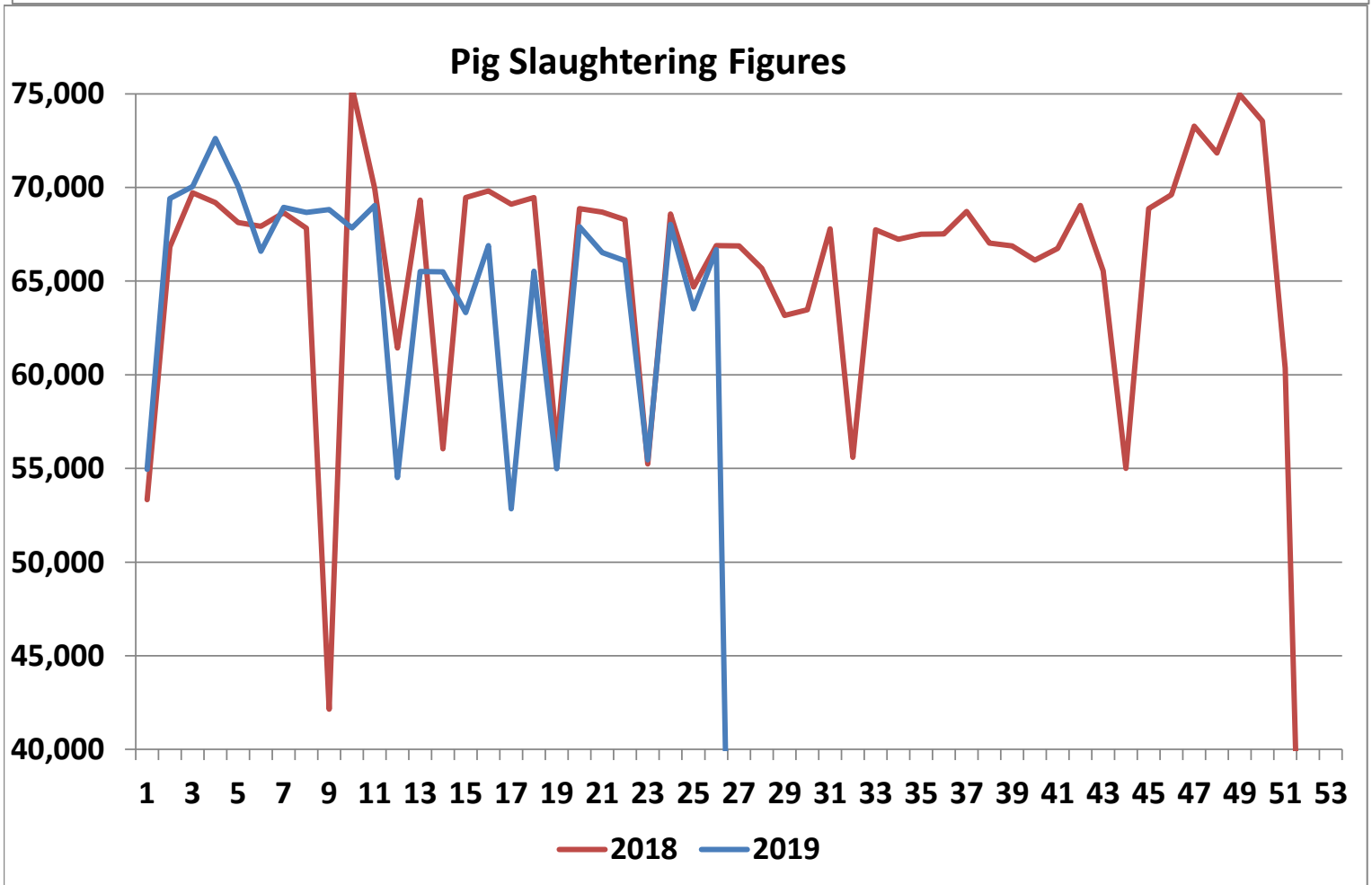
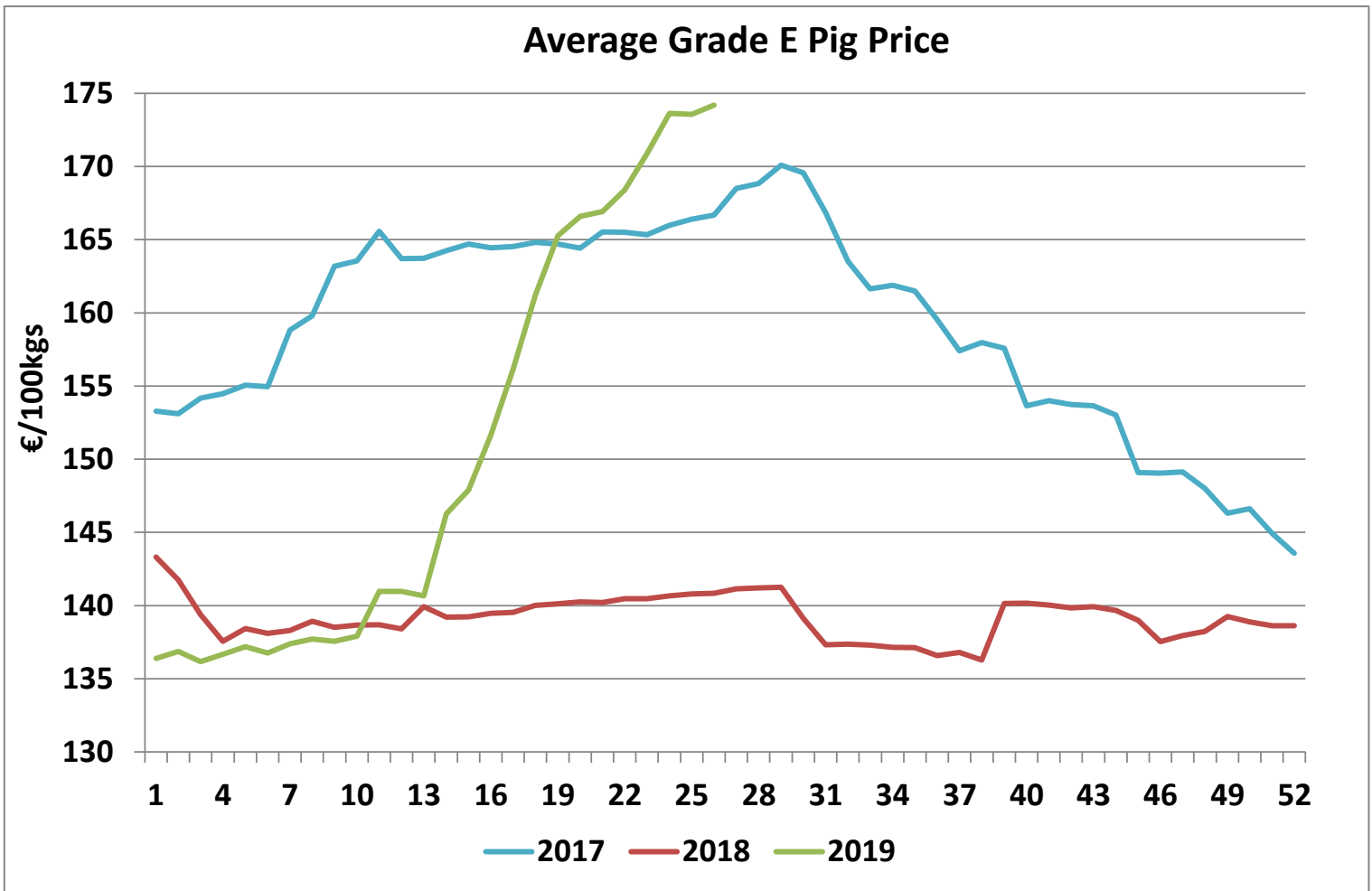


Cattle exported, w/c 17/06/19



Cumulative cattle export figures, 2019





Sheepmeat Information for Week 26

Irish Prices €/100 kg	2019	2018	Change
Ave Factory Price	484.44	542.31	-10.7%
Ave Mart Price	407.97	452.31	-9.8%
National Ave Price	461.5	515.31	-10.4%
YTD Ave	494.04	526.29	-6.1%

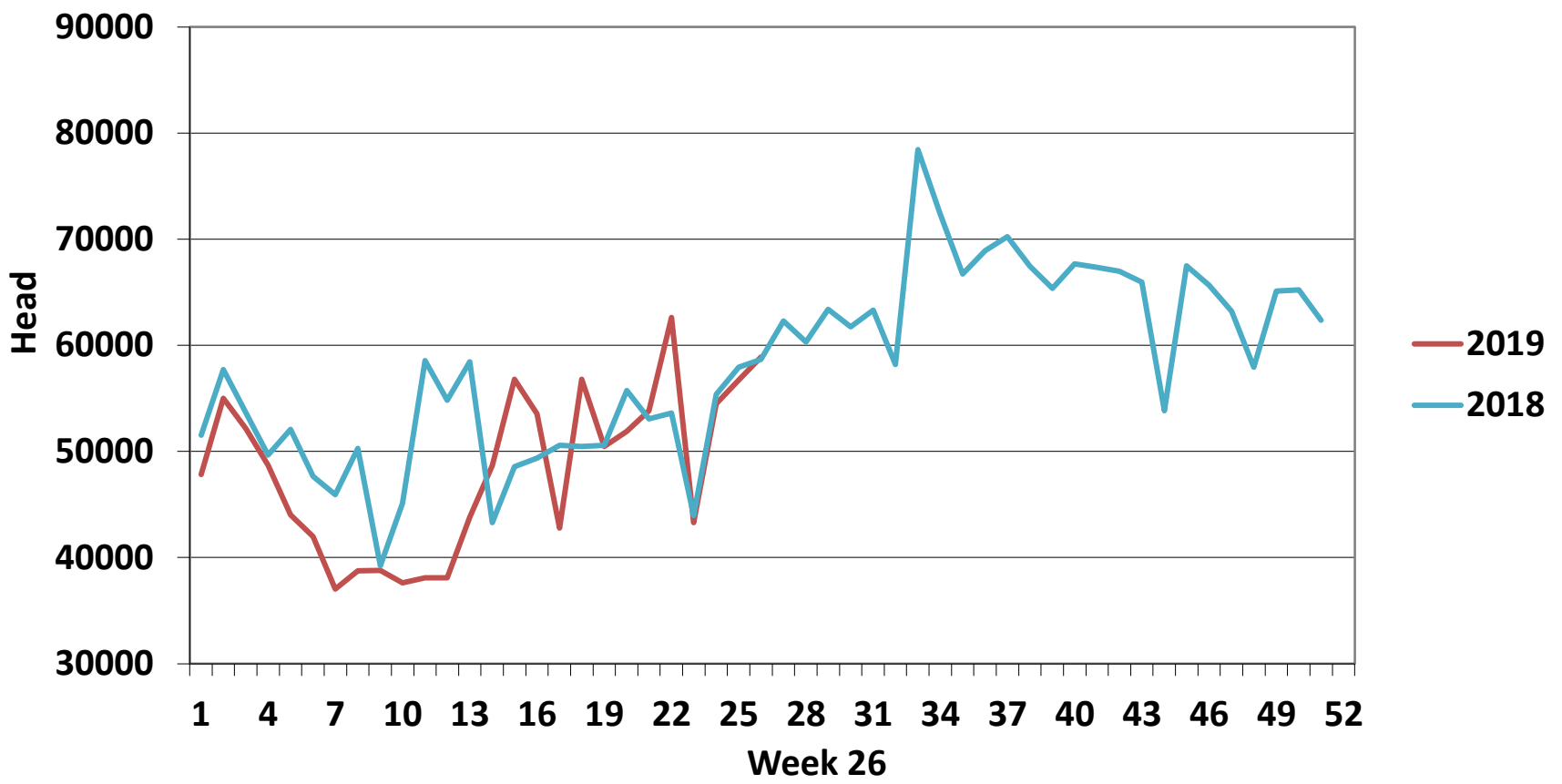
Slaughterings	2019	2018	Change
Weekly	58,904	58,649	0%
YTD	1,252,796	1,335,896	-6%

EU Market Rates Heavy Lambs	€/100kg	% of Community Price
Belgium	516.1	98%
Denmark	512.7	97%
Germany	531.8	101%
Spain	484.8	92%
France	594.0	113%
Croatia	504.3	96%
Ireland	564.3	107%
Italy	535.0	102%
Cyprus	451.0	86%
Latvia	409.3	78%
Lithuania	386.9	73%
Netherlands	533.3	101%
Austria	545.0	104%
Poland	445.6	85%
Romania	221.0	42%
Finland	358.8	68%
Sweden	550.0	104%
Northern Ireland	464.2	88%
Great Britain	506.0	96%
United Kingdom	503.0	96%
Community	526.5	100%

**REPORT ON SLAUGHTERING AT SHEEP EXPORT PREMISES
WEEK 26**

CATEGORY	2019		2018		DIFFERENCE	
	Weekly	Cumulative	Weekly	Cumulative	Weekly	Cumulative
Lambs/Hoggets	1,326	734,661	1,240	825,759	86	91,098
Spring Lambs	50,415	336,341	48,249	291,150	2,166	45,191
Ewes and Rams	7,137	181,716	9,156	218,862	-2,019	37,146
Light Lambs	26	78	4	125	22	47
TOTAL	58,904	1,252,796	58,649	1,335,896	255	-83,100

Weekly Sheep Slaughterings



Ave. Price €/100 kg for Sheepmeat

