

# Meat Market Report

28/01/19 - 03/02/19

Week

05



**An Roinn Talmhaíochta,  
Bia agus Mara**

Department of Agriculture,  
Food and the Marine

# MARKET SUMMARY

## Beef

### Deadweight Prices c/100Kg (Including VAT)

	U3	U4	R3	R4	O3	O4	P+
Steers	395.5	391.3	386.6	387.3	368.1	371.0	346.6
Heifers	415.5	414.1	400.5	400.2	383.0	383.1	351.1
Young Bulls	376.8	370.0	365.5	364.2	343.7	344.6	326.8
Cows			310.8	310.5	283.4	283.7	271.0

### Liveweight Prices

*Bull Calf Average Price	€161.2 per head (Excluding VAT)
**Young Store Average Price	€206.0 per 100kg (Excluding VAT)
***Yearling (male & female) Price	€185.5 per 100kg (Excluding VAT)

\* Aged 8-28 days \*\* Aged 180-364 days, Male & Female \*\*\*age 365-730 days

### Slaughtering

37,591 cattle slaughtered this week, of which steers were 11,259 (30%), heifers 11,674 (31%), young bulls 6,427 (17%) and cows 7,838 (21%). Total YTD slaughter is 175,736 compared to 164,444 in 2018, a 7% increase.

### Live Trade

1,770 cattle were exported in the week commencing 21/01/2019 1,271 to EU (Except NI). Live exports for same week in 2019 amount to 5,448 compared to 4,018 in 2018, up 36% on 2018 levels.

\*This data is provisional and subject to revision.

The next meeting of the Management Committee for the Common Organisation of Agricultural Markets (Animal Products Sector) is 21 February 2019

### CONTENTS:

Page 2: Market Summary Beef  
 Page 3: Market Summary Other Meats  
 Page 4: Beef Price and Slaughter Summary  
 Page 5: Comparative Beef Prices  
 Page 6: Steer and Young Bull Price  
 Page 7: Heifer and Cow Graphs  
 Page 8: Price and Slaughter Graphs  
 Page 9: Liveweight Beef Graphs

Page 10: Beef Export Maps  
 Page 11: Beef Export Info  
 Page 12: Market Access Update  
 Page 13: Pig Price Graph  
 Page 14: Pig Slaughtering  
 Page 15: Sheep Prices  
 Page 16: Sheep Slaughtering  
 Page 17: Poultry Slaughtering

# MARKET SUMMARY

## Pigmeat

Grade E Pig  
Prices (Ex.  
VAT)

The Grade E Pig price for week commencing 28/01/2019 was €137.19 per 100Kg. in comparison to €138.43 in the same week last year, which represents a 0.9% decrease.

[Further details available on page 13](#)

Slaughtering

70,070 pigs were slaughtered in week 5 of which 2,215 were sows. The cumulative figure for pig slaughtering in 2019 is 337,084 which is up 3% against the same point last year.

[Further details available on page 14](#)

## Sheepmeat

Sheepmeat  
Prices (Ex.  
VAT)

The national average price for the week commencing 28/01/2019 was €500.14 per 100Kg, an increase of 11.6% over the same week last year.

[Further details available on page 15](#)

Slaughtering

44,035 sheep were slaughtered at sheep export premises the week commencing 28/01/2019, compared to 52,081 in the same week of 2018. Sheep slaughtering for 2019 is 6% down on 2018 at 247,732 head.

Live Trade

Total live exports to European Countries stood at 20,769 head to the end of 2018.

## Poultry

Slaughtering

Cumulative poultry slaughtering for 2019\* stand at 10,140,356 birds at the end of week 5, up 10% compared to the same period last year.

[Further details available on page 17](#)

\*Latest Figures are provisional and subject to change

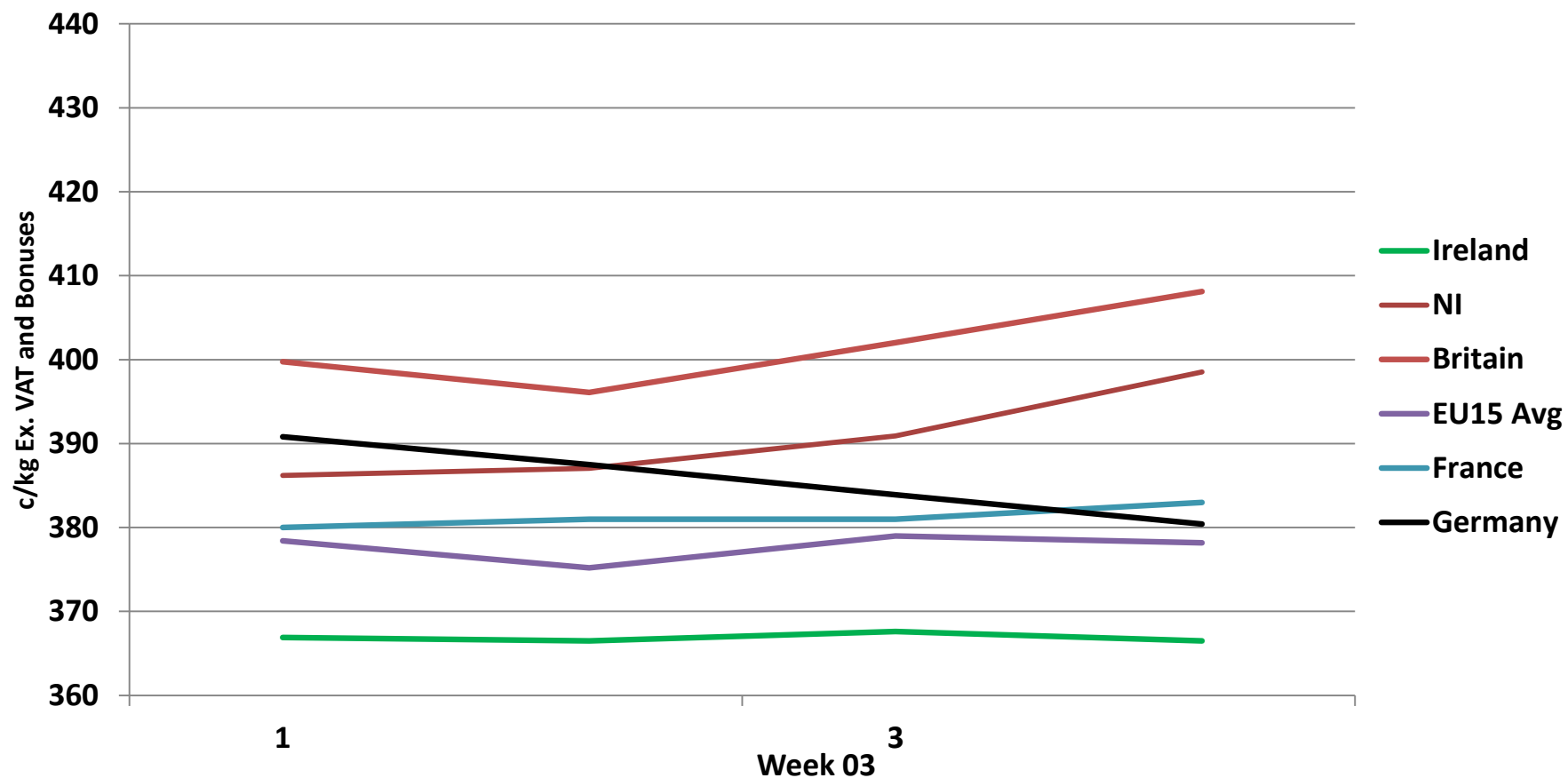
Dead Weight Prices	W/C	W/C	Same week 2018	% change prev week	% change 2018
	28/01/19	21/01/19	29/01/18		
Steers (R3) (c/kg)	366.8	366.5	383.9	0.1%	-4.5%
Heifers (R3) (c/kg)	379.9	379.6	396.1	0.1%	-4.1%
Young Bulls (U3) (c/kg)	357.5	358.9	388.9	-0.4%	-8.1%
Cows (04) (c/kg)	269.1	269.7	323.1	-0.2%	-16.7%

Live Weight Prices	W/C	W/C	Same week 2017	% change previous week	% change 2018
	28/01/19	21/01/19	29/01/18		
Yearlings (Male) (Aged 365 - 730 days) - (€/100Kg)	181	179	195	1.1%	-7.2%
Yearlings (Female) (Aged 365 - 730 days) - (€/100Kg)	190	183	205	3.8%	-7.3%
Young Stores (Male & Female) (Aged 180 - 364 days) - (€/100Kg)	206	203	233	1.5%	-11.6%
Bull Calf (€/head) Dairy	105.5	124.0	122.1	-14.9%	-13.6%
Bull Calf (€/head) Beef	216.9	213.2	288.3	1.7%	-24.8%
Bull Calf (€/head) Average	161.2	168.6	205.2	-4.4%	-21.4%

Slaughter Figures	% of weekly figures	W/C	Same week 2018	Year to Date		Change 2019 v 2018	
		28-Jan-19		2019	2018	Head	%
Steers	30.0%	11,259	10,430	53,466	52,657	809	1.5%
Cows	20.9%	7,838	7,488	35,554	31,693	3,861	12.2%
Heifers	31.1%	11,674	9,692	54,987	49,940	5,047	10.1%
Young Bulls	17.1%	6,427	5,869	29,865	28,202	1,663	5.9%
Mature Bulls	1.0%	393	659	1,864	1,952	-88	-4.5%
<b>Total</b>	<b>100%</b>	<b>37,591</b>	<b>34,138</b>	<b>175,736</b>	<b>164,444</b>	<b>11,292</b>	<b>6.9%</b>

Live Exports	W/C	Same week	W/C	Year to Date		Change 2019 v 2018	
	21-Jan-19	2018	14-Jan-19	2019	2018	Head	%
Northern Ireland	499	319	631	1,892	867	1,025	118%
EU Except NI	1,271	424	902	3,527	1,255	2,272	181%
Third Countries	0	1,896	29	29	1,896	-1,867	-
<b>Total</b>	<b>1,770</b>	<b>2,639</b>	<b>1,562</b>	<b>5,448</b>	<b>4,018</b>	<b>1,430</b>	<b>36%</b>
<b>Calves YTD:</b>	<b>2,089</b>			<b>Adult Cattle YTD:</b>		<b>3,233</b>	

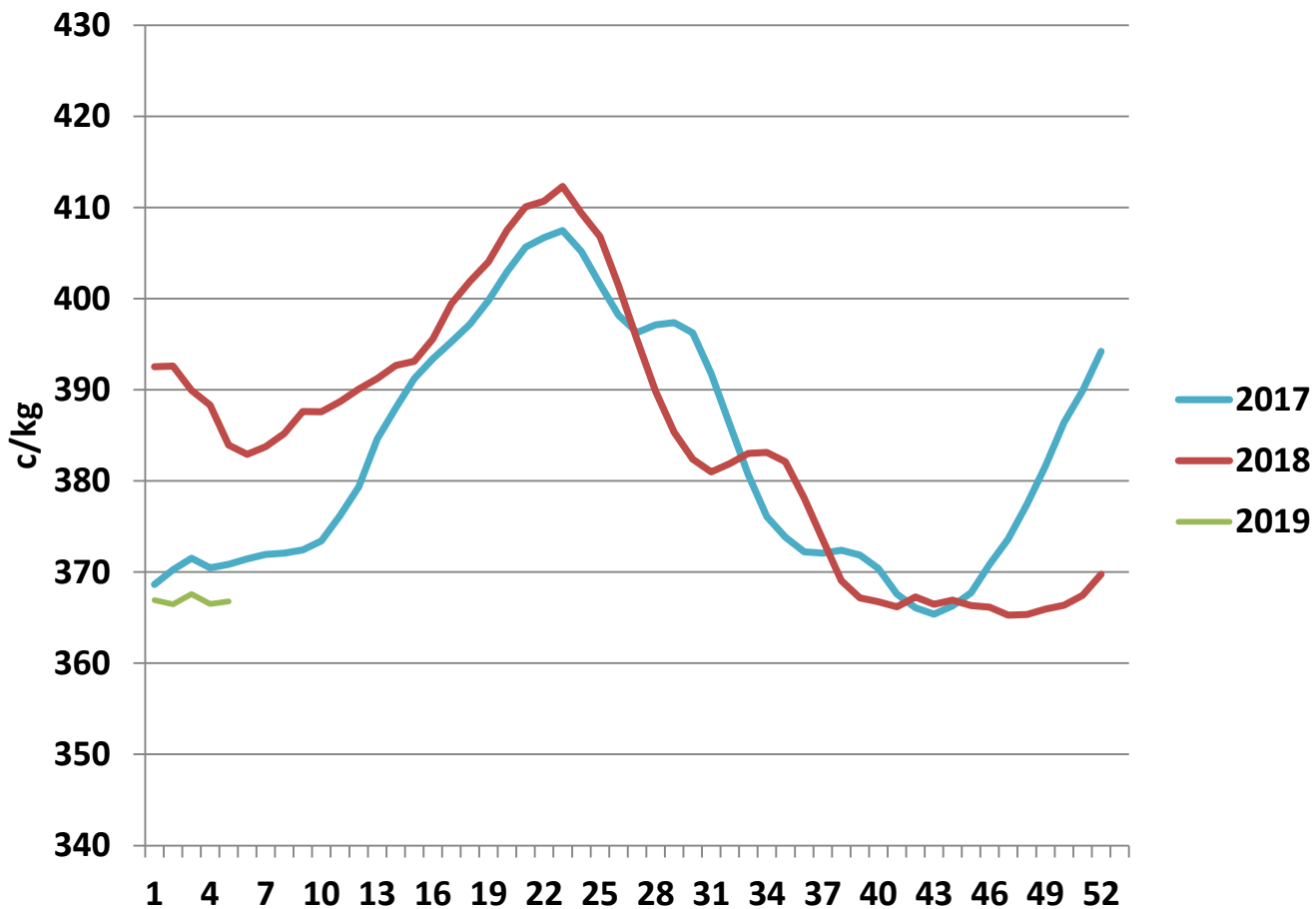
## Irish Deadweight Cattle Prices vs Selected Other Markets, 2019



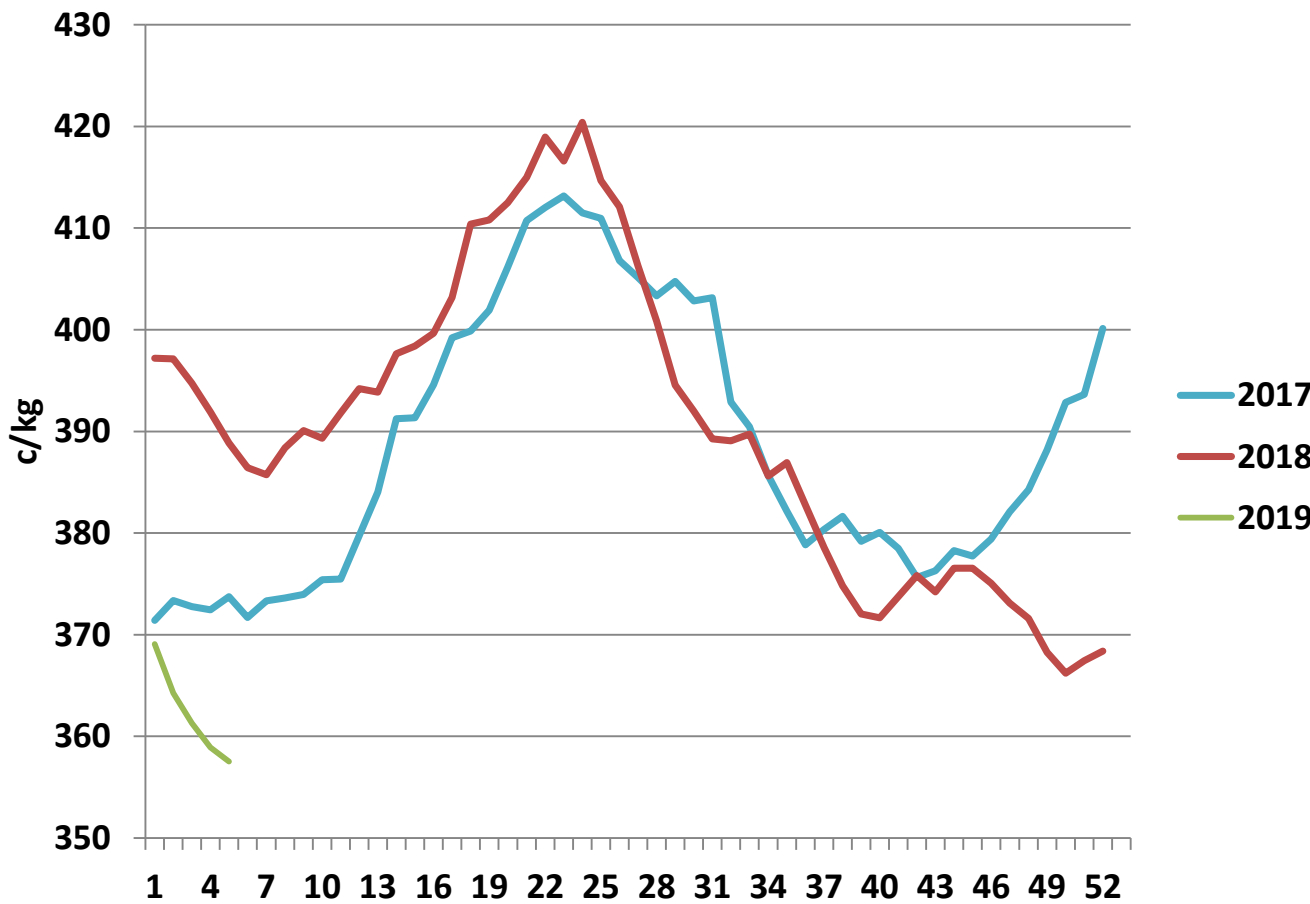
### Livestock Pricing

	Ireland	NI	Britain	EU 15 Average	France	Germany
<b>W/C 21/01/19</b>	<b>366.5</b>	<b>398.54</b>	<b>408.1</b>	<b>378.16</b>	<b>383</b>	<b>380.4</b>

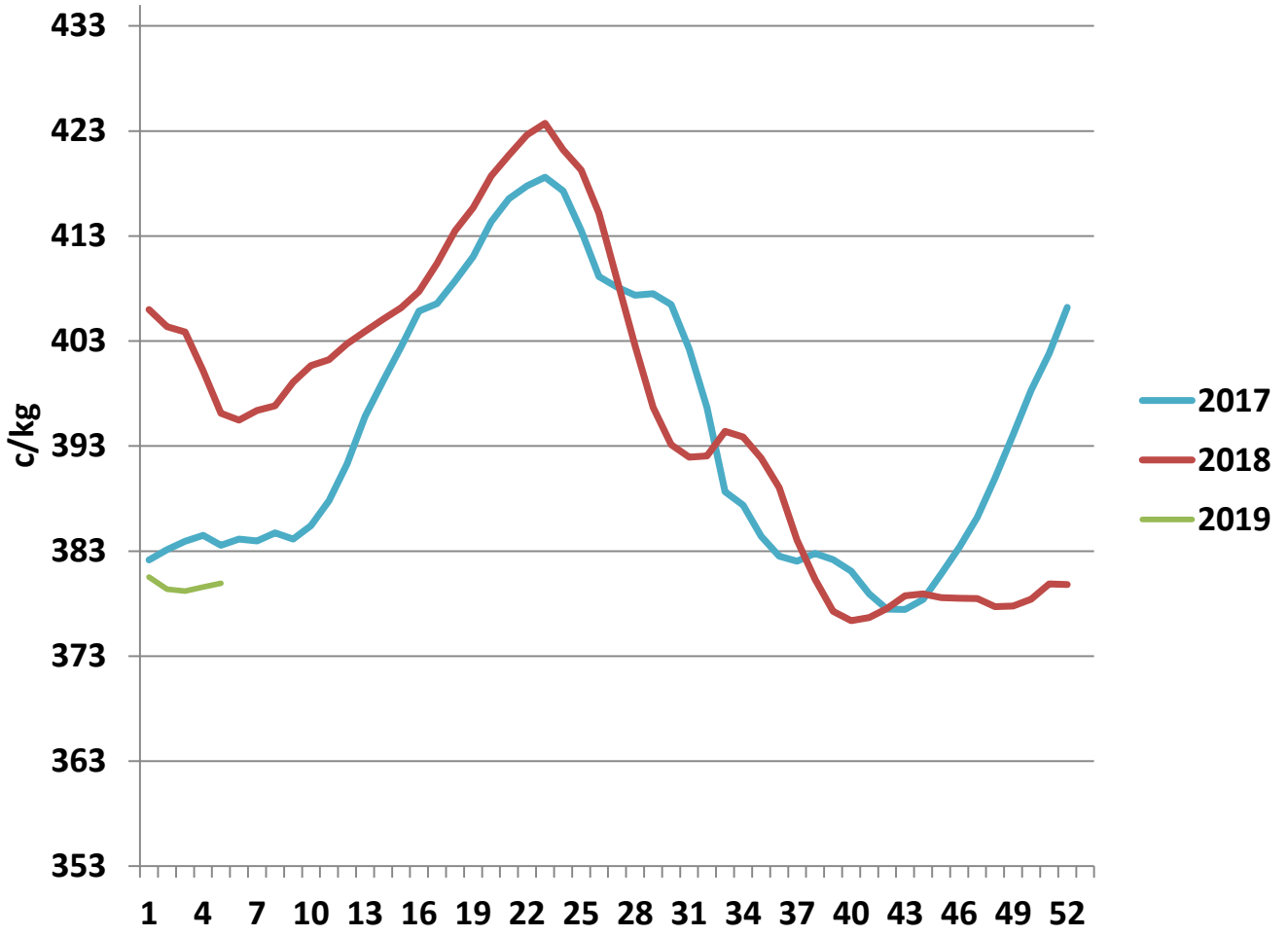
### R3 Steer prices ex. VAT



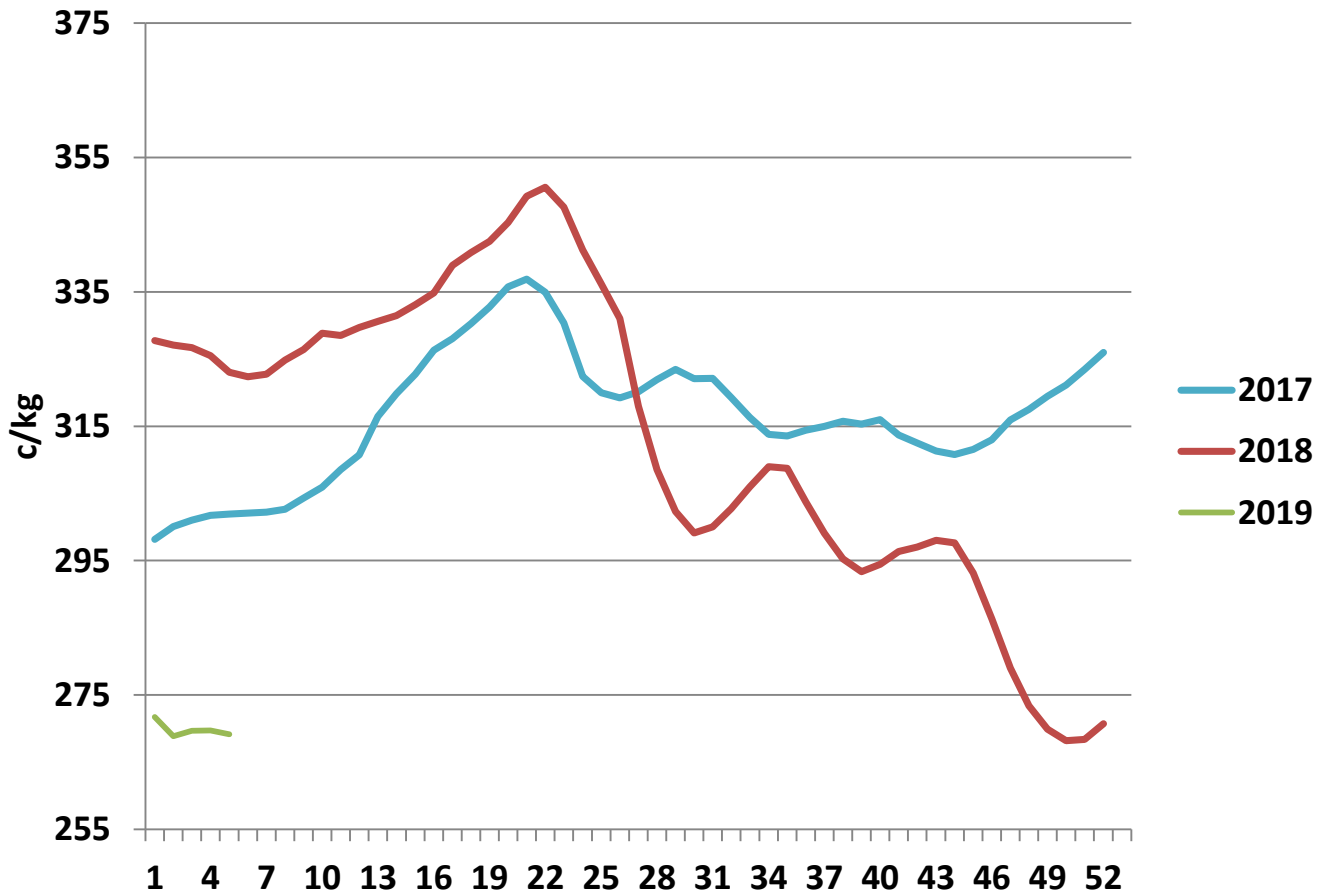
### U3 Young Bull prices ex. VAT



### R3 Heifer prices ex. VAT

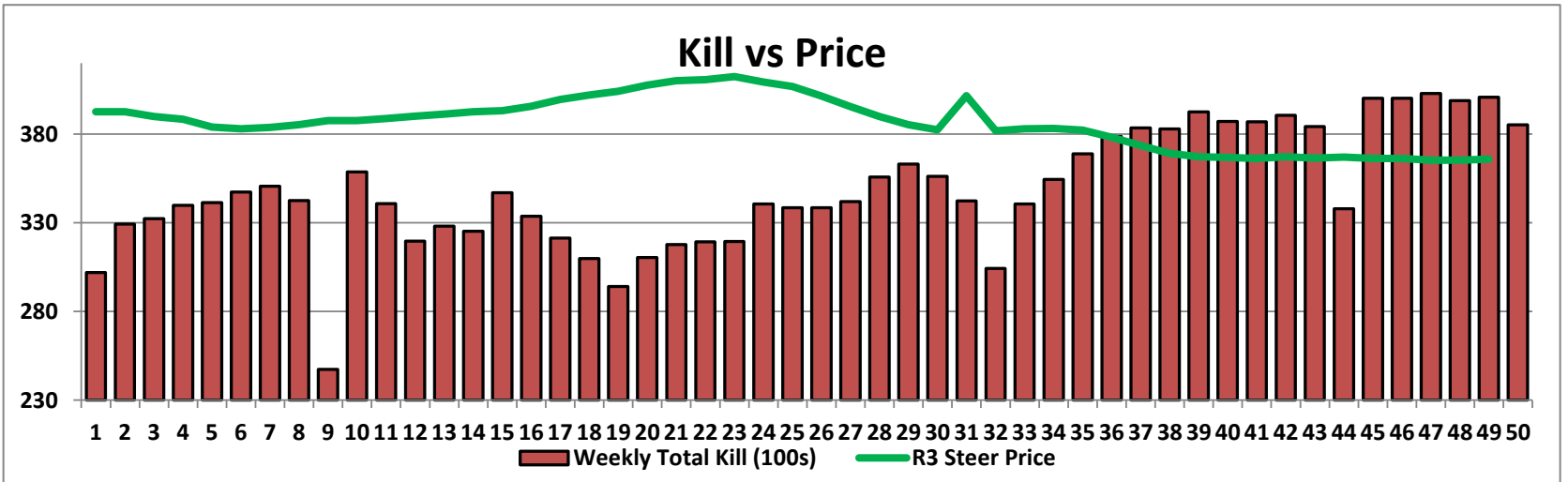
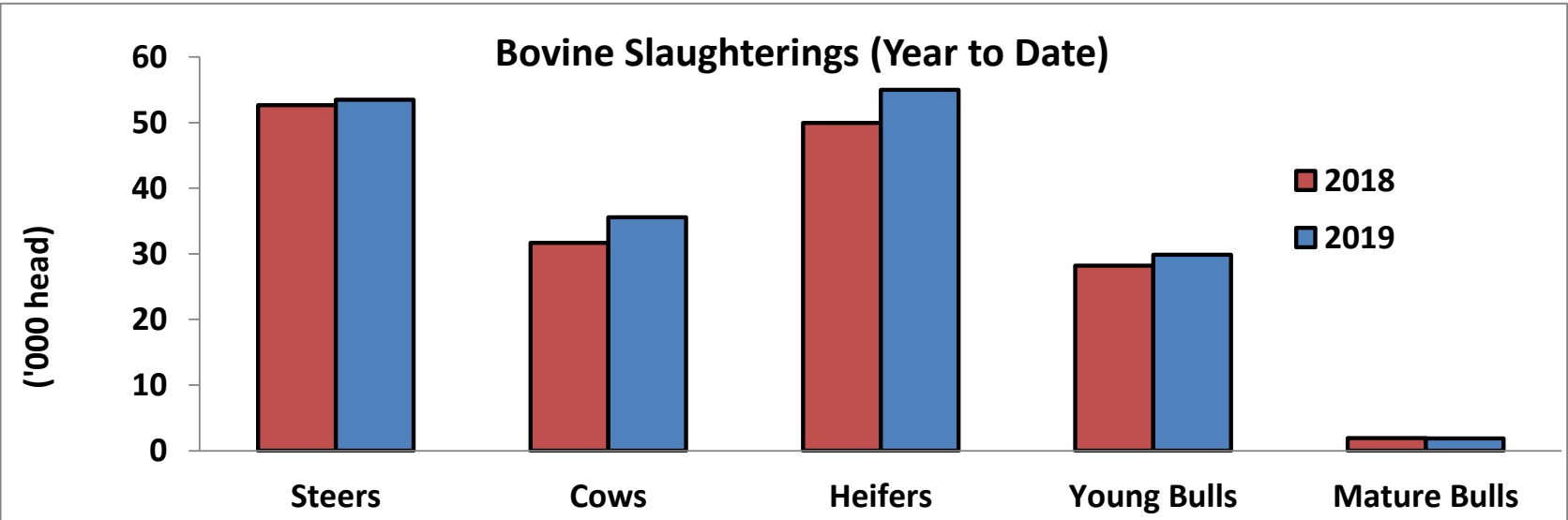
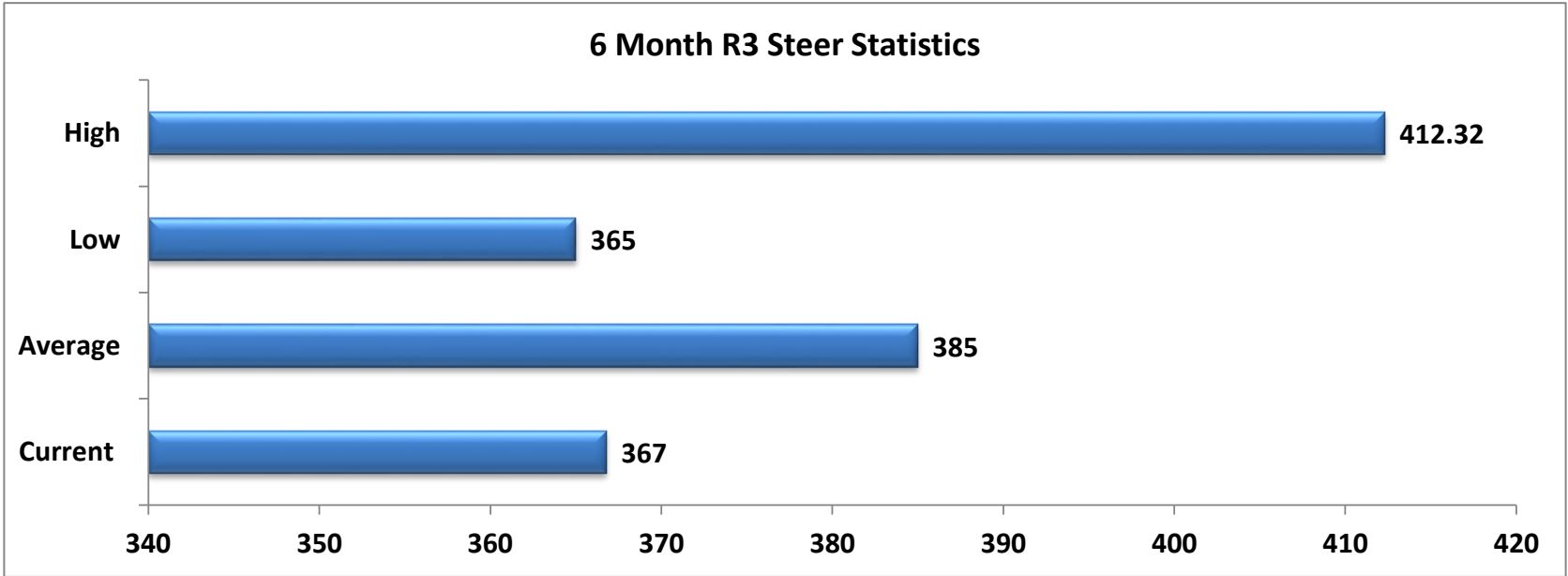


### O4 Cow prices ex. VAT

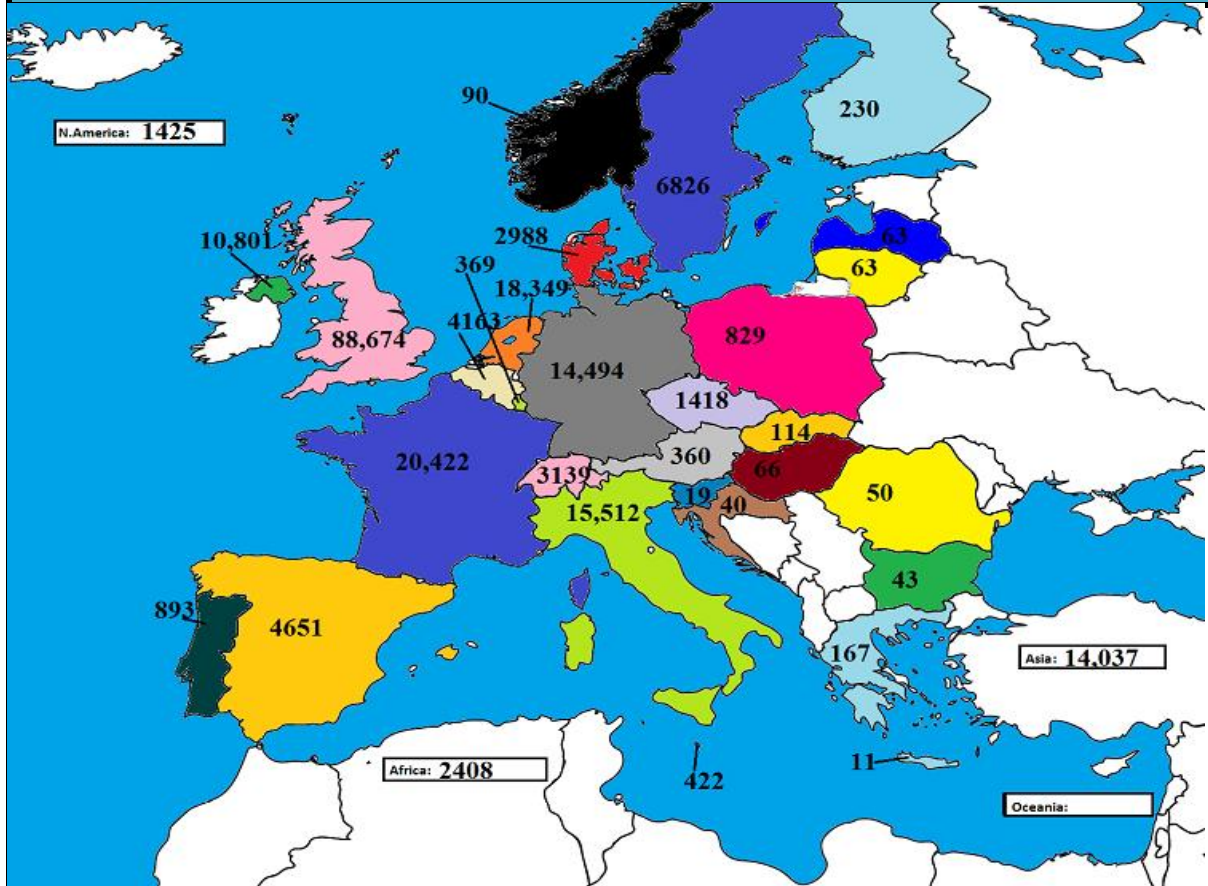




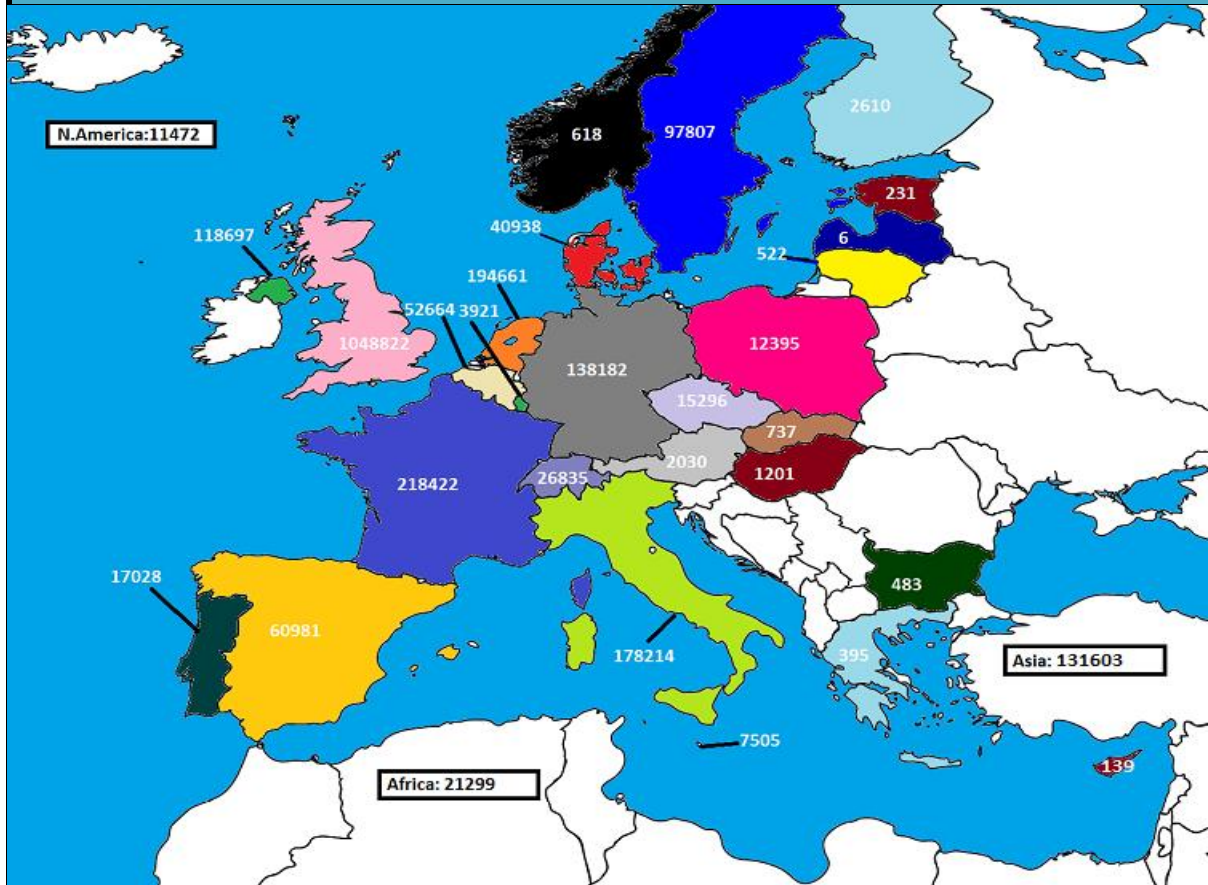




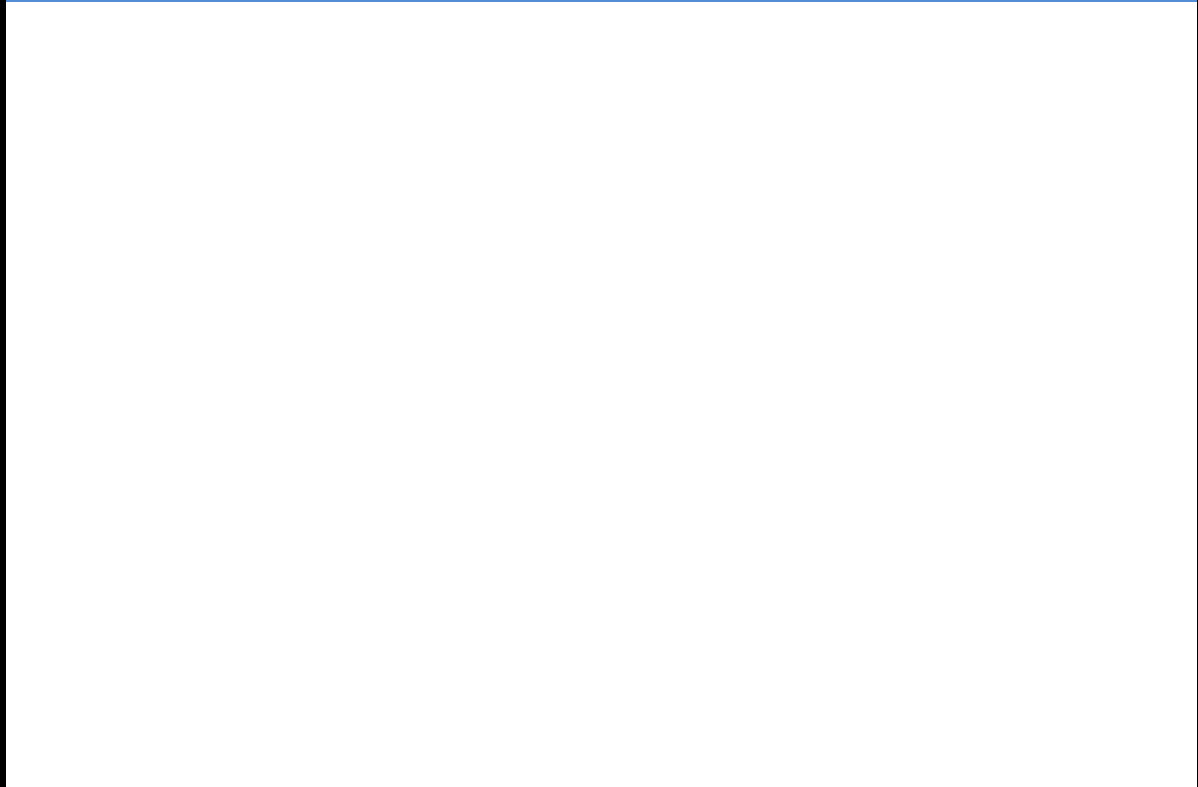
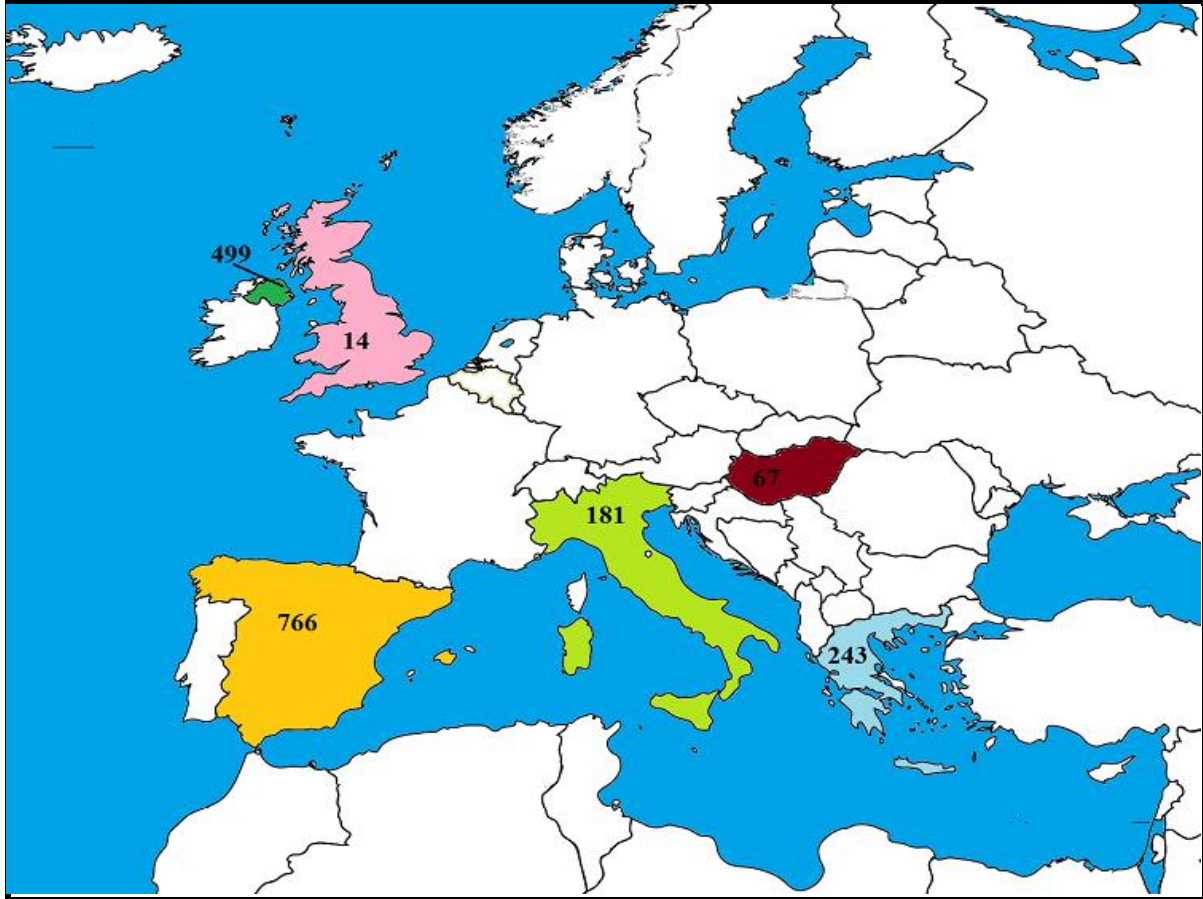
November 2018 Beef exports, €000 (CSO figures)



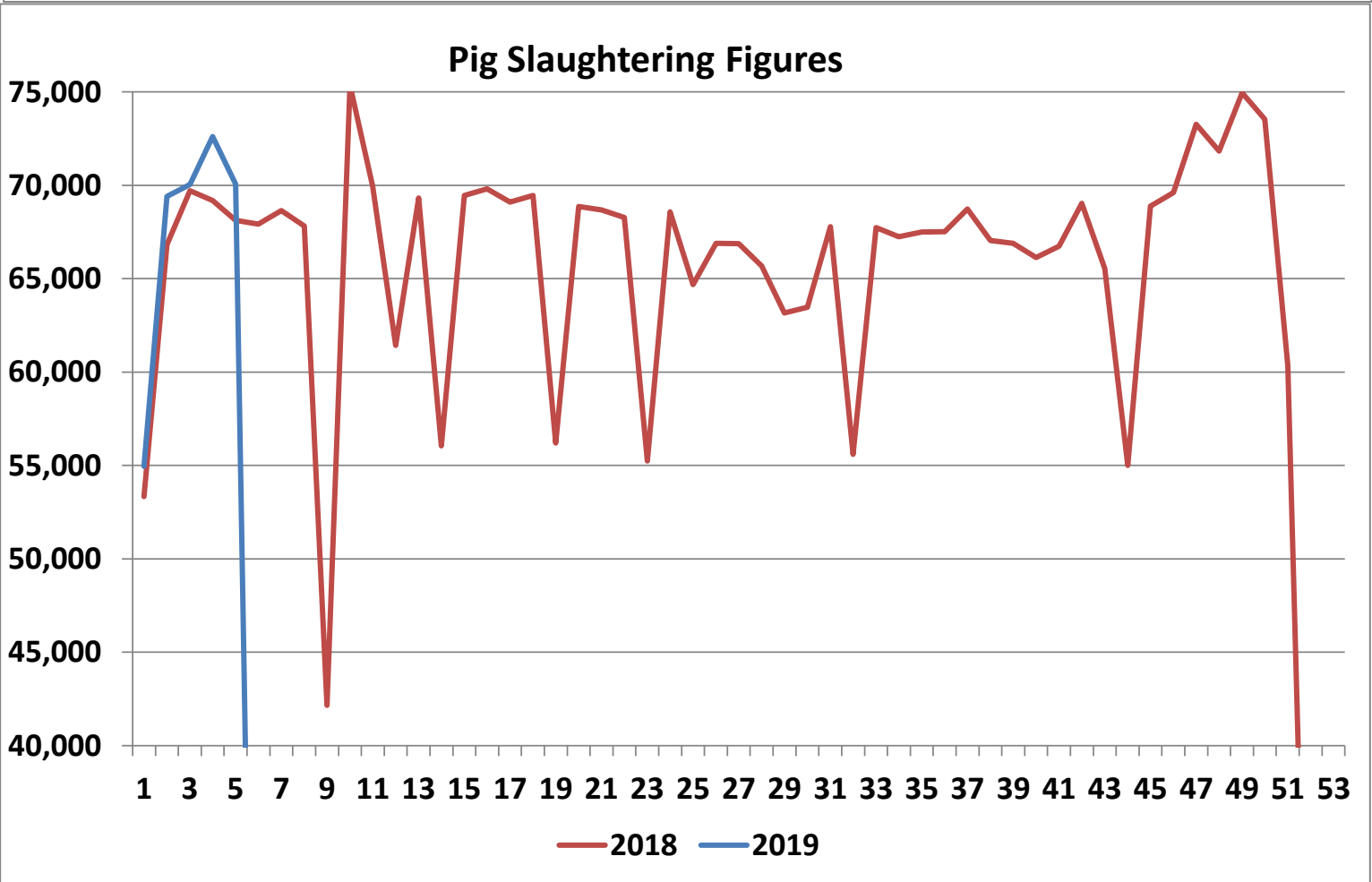
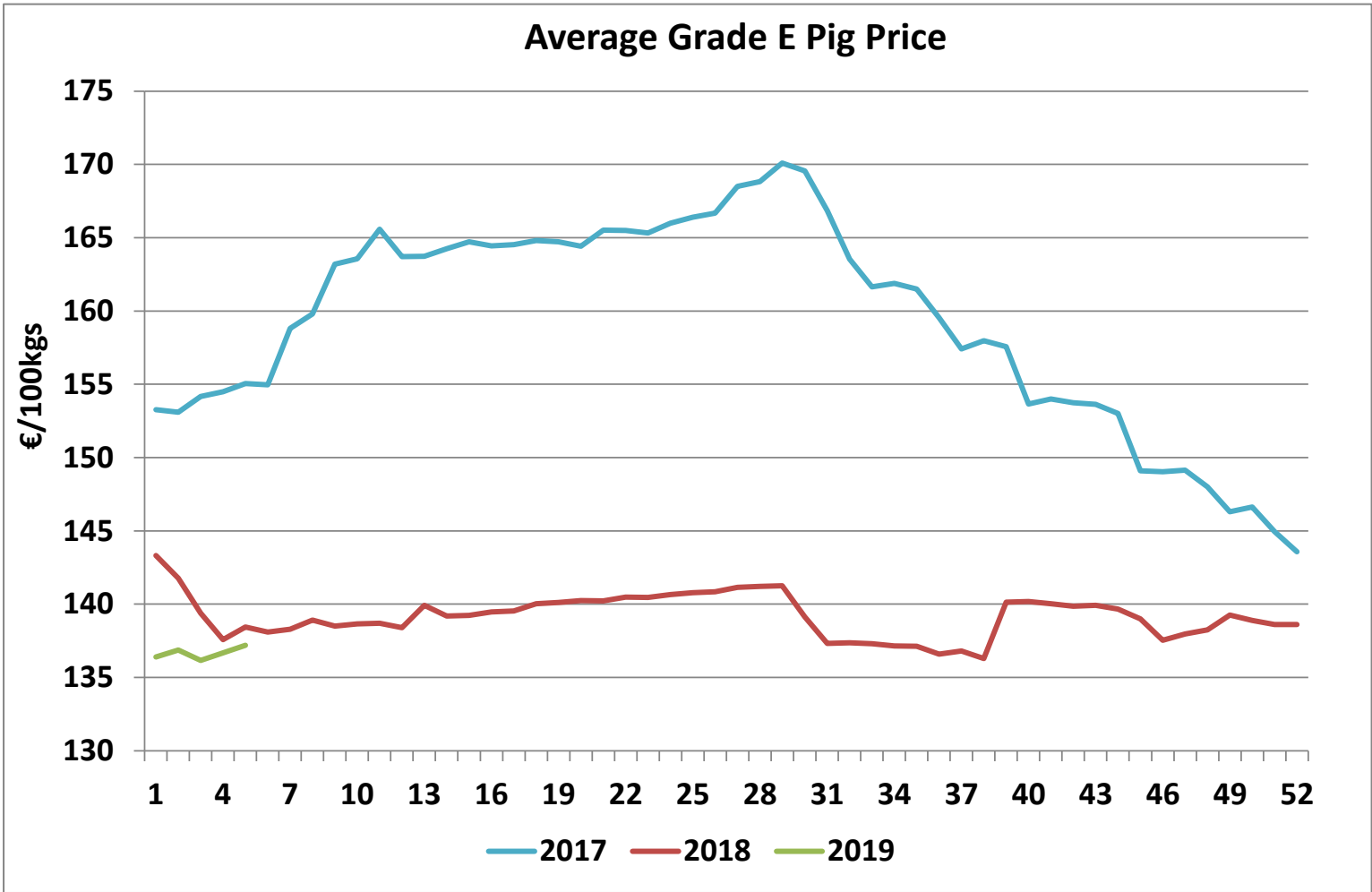
Cumulative beef exports to Dec 2017, €000 (CSO figures)



Cattle exported, w/c 21/01/19



Irish Average Grade E Pig Prices - €/100kgs						
Week	2019	Weekly %	% change	2018	2017	
1	136.39		-4.8%	<b>143.31</b>	153.27	
2	136.87	0.4%	-3.4%	<b>141.76</b>	153.10	
3	136.17	-0.5%	-2.3%	<b>139.39</b>	154.17	
4	136.68	0.4%	-0.6%	<b>137.57</b>	154.48	
5	137.19	0.4%	-0.9%	<b>138.43</b>	155.06	
6		-	-100.0%	<b>138.10</b>	154.96	
7		-	-100.0%	<b>138.30</b>	158.82	
8		-	-100.0%	<b>138.92</b>	159.79	
9		-	-100.0%	<b>138.51</b>	163.19	
10		-	-100.0%	<b>138.66</b>	163.55	
11		-	-100.0%	<b>138.69</b>	165.58	
12		-	-100.0%	<b>138.40</b>	163.71	
13		-	-100.0%	<b>139.93</b>	163.72	
14		-	-100.0%	<b>139.20</b>	164.25	
15		-	-100.0%	<b>139.23</b>	164.71	
16		-	-100.0%	<b>139.47</b>	164.43	
17		-	-100.0%	<b>139.54</b>	164.52	
18		-	-100.0%	<b>140.02</b>	164.80	
19		-	-100.0%	<b>140.12</b>	164.71	
20		-	-100.0%	<b>140.25</b>	164.42	
21		-	-100.0%	<b>140.22</b>	165.52	
22		-	-100.0%	<b>140.48</b>	165.50	
23		-	-100.0%	<b>140.47</b>	165.33	
24		-	-100.0%	<b>140.66</b>	165.99	
25		-	-100.0%	<b>140.79</b>	166.39	
26		-	-100.0%	<b>140.84</b>	166.68	
27		-	-100.0%	<b>141.14</b>	168.50	
28		-	-100.0%	<b>141.21</b>	168.83	
29		-	-100.0%	<b>141.26</b>	170.09	
30		-	-100.0%	<b>139.12</b>	169.56	
31		-	-100.0%	<b>137.33</b>	166.84	
32		-	-100.0%	<b>137.37</b>	163.53	
33		-	-100.0%	<b>137.30</b>	161.65	
34		-	-100.0%	<b>137.15</b>	161.88	
35		-	-100.0%	<b>137.13</b>	161.49	
36		-	-100.0%	<b>136.59</b>	159.53	
37		-	-100.0%	<b>136.80</b>	157.41	
38		-	-100.0%	<b>136.29</b>	157.97	
39		-	-100.0%	<b>140.14</b>	157.57	
40		-	-100.0%	<b>140.17</b>	153.65	
41		-	-100.0%	<b>140.04</b>	154.00	
42		-	-100.0%	<b>139.85</b>	153.73	
43		-	-100.0%	<b>139.93</b>	153.64	
44		-	-100.0%	<b>139.67</b>	153.01	
45		-	-100.0%	<b>139.00</b>	149.10	
46		-	-100.0%	<b>137.54</b>	149.04	
47		-	-100.0%	<b>137.96</b>	149.13	
48		-	-100.0%	<b>138.24</b>	148.01	
49		-	-100.0%	<b>139.25</b>	146.30	
50		-	-100.0%	<b>138.89</b>	146.62	
51		-	-100.0%	<b>138.62</b>	144.94	
52		-	-100.0%	<b>138.62</b>	143.57	





**Pig Slaughtering Figures at Export Approved Plants**

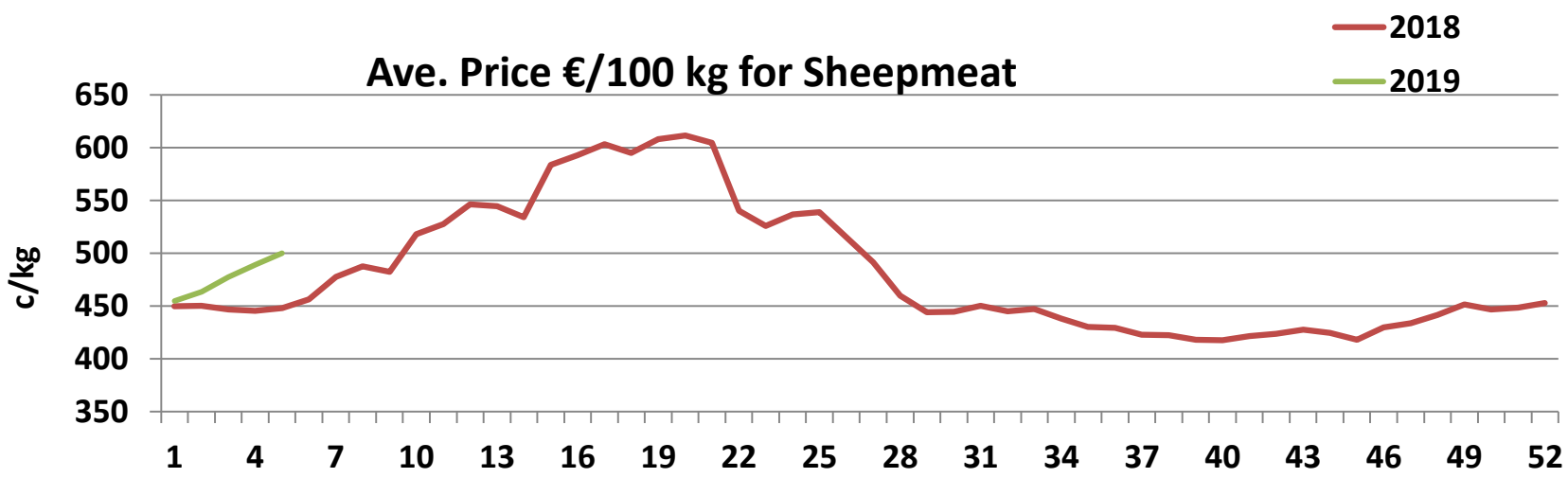
2019							2018				
Week	Pigs	Sows	Total	Cum	2019v2018	% Diff	Week	Pigs	Sows	Total	Cum
1	53,001	1,944	54,945	54,945	1,616	3%	1	51,490	1,839	53,329	53,329
2	67,781	1,629	69,410	124,355	4,199	3%	2	64,796	2,031	66,827	120,156
3	68,263	1,782	70,045	194,400	4,534	2%	3	68,008	1,702	69,710	189,866
4	70,203	2,411	72,614	267,014	7,963	3%	4	67,302	1,883	69,185	259,051
5	67,855	2,215	70,070	337,084	9,905	3%	5	65,886	2,242	68,128	327,179
6				267,014	-340,158	-32%	6	66,072	1,852	67,924	395,103
7				267,014	-408,812	-42%	7	66,751	1,903	68,654	463,757
8				267,014	-476,637	-50%	8	65,920	1,905	67,825	531,582
9				267,014	-518,790	-53%	9	41,794	359	42,153	573,735
10				267,014	-594,145	-59%	10	72,970	2,385	75,355	649,090
11				267,014	-664,090	-63%	11	68,008	1,937	69,945	719,035
12				267,014	-725,521	-66%	12	59,506	1,925	61,431	780,466
13				267,014	-794,847	-69%	13	67,692	1,634	69,326	849,792
14				267,014	-850,899	-71%	14	54,379	1,673	56,052	905,844
15				267,014	-920,350	-73%	15	67,346	2,105	69,451	975,295
16				267,014	-990,163	-74%	16	67,791	2,022	69,813	1,045,108
17				267,014	-1,059,262	-76%	17	67,224	1,875	69,099	1,114,207
18				267,014	-1,128,726	-77%	18	67,453	2,011	69,464	1,183,671
19				267,014	-1,184,918	-78%	19	54,510	1,682	56,192	1,239,863
20				267,014	-1,253,791	-80%	20	67,150	1,723	68,873	1,308,736
21				267,014	-1,322,473	-81%	21	66,590	2,092	68,682	1,377,418
22				267,014	-1,390,748	-82%	22	66,404	1,871	68,275	1,445,693
23				267,014	-1,445,993	-82%	23	53,696	1,549	55,245	1,500,938
24				267,014	-1,514,579	-83%	24	66,779	1,807	68,586	1,569,524
25				267,014	-1,579,267	-84%	25	62,897	1,791	64,688	1,634,212
26				267,014	-1,646,166	-84%	26	65,378	1,521	66,899	1,701,111
27				267,014	-1,713,040	-85%	27	64,921	1,953	66,874	1,767,985
28				267,014	-1,778,715	-85%	28	63,997	1,678	65,675	1,833,660
29				267,014	-1,841,875	-86%	29	61,430	1,730	63,160	1,896,820
30				267,014	-1,905,338	-86%	30	62,022	1,441	63,463	1,960,283
31				267,014	-1,973,123	-87%	31	66,189	1,596	67,785	2,028,068
32				267,014	-2,028,710	-87%	32	53,699	1,888	55,587	2,083,655
33				267,014	-2,096,445	-88%	33	65,461	2,274	67,735	2,151,390
34				267,014	-2,163,685	-88%	34	65,202	2,038	67,240	2,218,630
35				267,014	-2,231,193	-88%	35	65,350	2,158	67,508	2,286,138
36				267,014	-2,298,712	-89%	36	65,293	2,226	67,519	2,353,657
37				267,014	-2,367,436	-89%	37	67,118	1,606	68,724	2,422,381
38				267,014	-2,434,473	-89%	38	65,039	1,998	67,037	2,489,418
39				267,014	-2,501,359	-90%	39	65,375	1,511	66,886	2,556,304
40				267,014	-2,567,486	-90%	40	63,832	2,295	66,127	2,622,431
41				267,014	-2,634,231	-90%	41	64,943	1,802	66,745	2,689,176
42				267,014	-2,703,271	-90%	42	66,870	2,170	69,040	2,758,216
43				267,014	-2,768,822	-91%	43	63,792	1,759	65,551	2,823,767
44				267,014	-2,823,825	-91%	44	53,298	1,705	55,003	2,878,770
45				267,014	-2,892,700	-91%	45	67,201	1,674	68,875	2,947,645
46				267,014	-2,962,308	-91%	46	67,488	2,120	69,608	3,017,253
47				267,014	-3,035,573	-91%	47	71,192	2,073	73,265	3,090,518
48				267,014	-3,107,410	-92%	48	69,965	1,872	71,837	3,162,355
49				267,014	-3,182,362	-92%	49	73,120	1,832	74,952	3,237,307
50				267,014	-3,255,904	-92%	50	71,181	2,361	73,542	3,310,849
51				267,014	-3,316,249	-92%	51	60,190	155	60,345	3,371,194
52				267,014	-3,331,935	-92%	52	15,237	449	15,686	3,386,880
53				267,014			53				
<b>Overall Total</b>	<b>53,001</b>	<b>1,944</b>	<b>54,945</b>	<b>267,014</b>			<b>Overall Total</b>	<b>3,293,197</b>	<b>93,683</b>	<b>3,386,880</b>	

Sheepmeat Information for week 5

Irish Prices €/100 kg	2019	2018	Change
Ave Factory Price	512.70	474.39	8.1%
Ave Mart Price	470.83	386.98	21.7%
National Ave Price	500.14	448.17	11.6%
YTD Ave	477.10	448.14	6.5%

Slaughterings	2019	2018	Change
Weekly	44,035	52,081	-15%
YTD	247,732	264,625	-6%

EU Market Rates Heavy Lambs	€/100kg	% of Community Price
Belgium	476.2	95%
Denmark	459.9	92%
Germany	501.8	100%
Spain	508.0	102%
France	576.0	115%
Croatia	381.2	76%
Ireland	500.1	100%
Italy	527.0	105%
Cyprus	523.0	105%
Latvia	370.6	74%
Lithuania	380.8	76%
Netherlands	474.1	95%
Austria	575.0	115%
Poland	434.3	87%
Romania	248.4	50%
Finland	353.8	71%
Sweden	398.2	80%
Northern Ireland	489.0	98%
Great Britain	487.0	97%
United Kingdom	487.1	97%
Community	500.0	100%



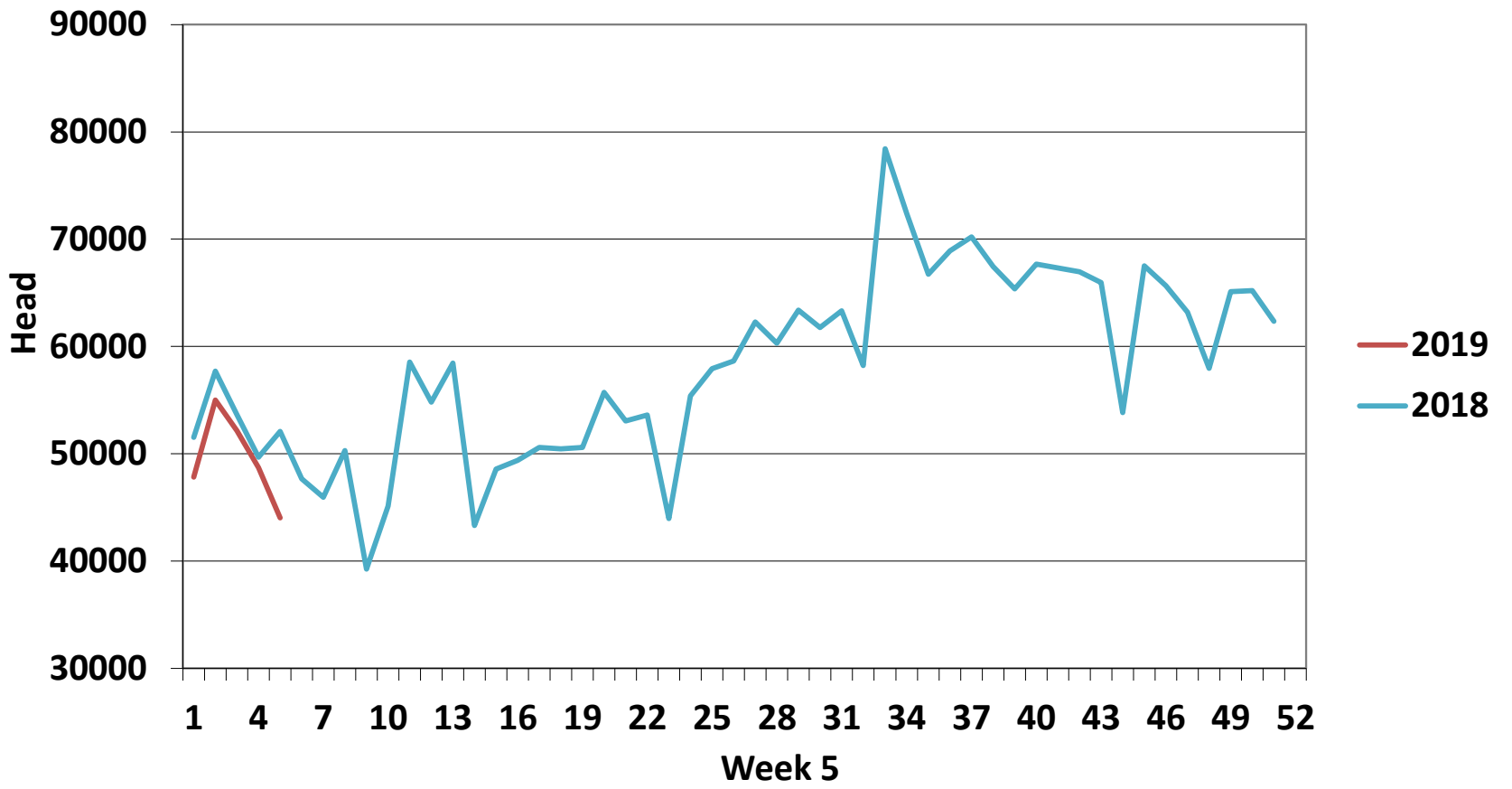
REPORT ON SLAUGHTERING AT SHEEP EXPORT PREMISES  
WEEK 05

CATEGORY	2019		2018		DIFFERENCE	
	Weekly	Cumulative	Weekly	Cumulative	Weekly	Cumulative
Lambs/Hoggets	35,414	188,371	43,021	223,265	-7607	34,894
Spring Lambs	-	12,825	-	-	0	12,825
Ewes and Rams	8,620	46,535	9,053	41,339	-433	5,196
Light Lambs	1	1	7	21	-6	20
<b>TOTAL</b>	<b>44,035</b>	<b>247,732</b>	<b>52,081</b>	<b>264,625</b>	<b>-8,046</b>	<b>-16,893</b>





# Weekly Sheep Slaughtering



Comparison of Poultry Slaughter Figures Between 2018 and 2019						
WEEK	2019 weekly	2019 cumulative	2018 weekly	2018 cumulative	2018 v 2019	% difference
1	1,601,081	1,601,081	1,625,961	1,625,961	-24,880	-1.5%
2	2,186,960	3,788,041	1,969,356	3,595,317	192,724	5.4%
3	2,150,267	5,938,308	1,932,194	5,527,511	410,797	7.4%
4	2,088,739	8,027,047	1,886,770	7,414,281	612,766	8.3%
5	2,113,309	10,140,356	1,800,824	9,215,105	925,251	10.0%
6	0	10,140,356	1,813,024	11,028,129	-11,028,129	-100.0%
7	0	10,140,356	1,808,499	12,836,628	-12,836,628	-100.0%
8	0	10,140,356	1,922,060	14,758,688	-14,758,688	-100.0%
9	0	10,140,356	1,516,700	16,275,388	-16,275,388	-100.0%
10	0	10,140,356	2,159,284	18,434,672	-18,434,672	-100.0%
11	0	10,140,356	1,957,072	20,391,744	-20,391,744	-100.0%
12	0	10,140,356	1,734,665	22,126,409	-22,126,409	-100.0%
13	0	10,140,356	1,874,839	24,001,248	-24,001,248	-100.0%
14	0	10,140,356	1,755,145	25,756,393	-25,756,393	-100.0%
15	0	10,140,356	1,963,967	27,720,360	-27,720,360	-100.0%
16	0	10,140,356	2,008,587	29,728,947	-29,728,947	-100.0%
17	0	10,140,356	1,994,979	31,723,926	-31,723,926	-100.0%
18	0	10,140,356	1,944,920	33,668,846	-33,668,846	-100.0%
19	0	10,140,356	1,749,772	35,418,618	-35,418,618	-100.0%
20	0	10,140,356	2,007,305	37,425,923	-37,425,923	-100.0%
21	0	10,140,356	1,948,360	39,374,283	-39,374,283	-100.0%
22	0	10,140,356	1,965,217	41,339,500	-41,339,500	-100.0%
23	0	10,140,356	1,726,225	43,065,725	-43,065,725	-100.0%
24	0	10,140,356	1,881,726	44,947,451	-44,947,451	-100.0%
25	0	10,140,356	1,904,281	46,851,732	-46,851,732	-100.0%
26	0	10,140,356	1,934,425	48,786,157	-48,786,157	-100.0%
27	0	10,140,356	1,818,807	50,604,964	-50,604,964	-100.0%
28	0	10,140,356	1,929,607	52,534,571	-52,534,571	-100.0%
29	0	10,140,356	2,022,893	54,557,464	-54,557,464	-100.0%
30	0	10,140,356	1,912,787	56,470,251	-56,470,251	-100.0%
31	0	10,140,356	2,013,496	58,483,747	-58,483,747	-100.0%
32	0	10,140,356	1,724,075	60,207,822	-60,207,822	-100.0%
33	0	10,140,356	1,923,341	62,131,163	-62,131,163	-100.0%
34	0	10,140,356	1,932,984	64,064,147	-64,064,147	-100.0%
35	0	10,140,356	1,990,167	66,054,314	-66,054,314	-100.0%
36	0	10,140,356	1,958,476	68,012,790	-68,012,790	-100.0%
37	0	10,140,356	1,954,910	69,967,700	-69,967,700	-100.0%
38	0	10,140,356	1,944,867	71,912,567	-71,912,567	-100.0%
39	0	10,140,356	1,927,534	73,840,101	-73,840,101	-100.0%
40	0	10,140,356	1,859,440	75,699,541	-75,699,541	-100.0%
41	0	10,140,356	1,868,389	77,567,930	-77,567,930	-100.0%
42	0	10,140,356	1,853,452	79,421,382	-79,421,382	-100.0%
43	0	10,140,356	1,982,639	81,404,021	-81,404,021	-100.0%
44	0	10,140,356	1,764,735	83,168,756	-83,168,756	-100.0%
45	0	10,140,356	1,876,069	85,044,825	-85,044,825	-100.0%
46	0	10,140,356	2,048,853	87,093,678	-87,093,678	-100.0%
47	0	10,140,356	1,864,758	88,958,436	-88,958,436	-100.0%
48	0	10,140,356	2,133,394	91,091,830	-91,091,830	-100.0%
49	0	10,140,356	3,850,235	94,942,065	-94,942,065	-100.0%
50	0	10,140,356	2,140,398	97,082,463	-97,082,463	-100.0%
51	0	10,140,356	1,975,187	99,057,650	-99,057,650	-100.0%
52	0	10,140,356	1,288,787	100,346,437	-100,346,437	-100.0%