

Meat Market Report

04/02/19 - 10/02/19

Week

06



**An Roinn Talmhaíochta,
Bia agus Mara**

Department of Agriculture,
Food and the Marine

MARKET SUMMARY

Beef

Deadweight Prices c/100Kg (Including VAT)

	U3	U4	R3	R4	O3	O4	P+
Steers	393.6	393.9	385.9	387.7	368.9	371.6	345.8
Heifers	414.1	413.1	400.4	400.1	382.5	382.3	350.5
Young Bulls	374.8	373.2	361.7	359.0	342.6	344.3	328.3
Cows			308.6	308.5	282.0	283.6	269.0

Liveweight Prices

*Bull Calf Average Price	€147.8 per head (Excluding VAT)
**Young Store Average Price	€213.0 per 100kg (Excluding VAT)
***Yearling (male & female) Price	€193.5 per 100kg (Excluding VAT)

* Aged 8-28 days ** Aged 180-364 days, Male & Female ***age 365-730 days

Slaughtering

38,221 cattle slaughtered this week, of which steers were 11,773 (31%), heifers 11,497 (30%), young bulls 6,447 (17%) and cows 7,981 (21%). Total YTD slaughter is 213,957 compared to 199,176 in 2018, a 7% increase.

Live Trade

4,580 cattle were exported in the week commencing 04/02/2019 4,011 to EU (Except NI). Live exports for 2019 amount to 13,067 compared to 6,836 in 2018, up 91% on 2018 levels.

*This data is provisional and subject to revision.

The next meeting of the Management Committee for the Common Organisation of Agricultural Markets (Animal Products Sector) is 21 February 2019

CONTENTS:

Page 2: Market Summary Beef
 Page 3: Market Summary Other Meats
 Page 4: Beef Price and Slaughter Summary
 Page 5: Comparative Beef Prices
 Page 6: Steer and Young Bull Price
 Page 7: Heifer and Cow Graphs
 Page 8: Price and Slaughter Graphs
 Page 9: Liveweight Beef Graphs

Page 10: Beef Export Maps
 Page 11: Beef Export Info
 Page 12: Market Access Update
 Page 13: Pig Price Graph
 Page 14: Pig Slaughtering
 Page 15: Sheep Prices
 Page 16: Sheep Slaughtering
 Page 17: Poultry Slaughtering

MARKET SUMMARY

Pigmeat

Grade E Pig
Prices (Ex.
VAT)

The Grade E Pig price for week commencing 04/02/2019 was €136.75 per 100Kg. in comparison to €138.10 in the same week last year, which represents a 1.0% decrease.

[Further details available on page 13](#)

Slaughtering

66,589 pigs were slaughtered in week 6 of which 1,833 were sows. The cumulative figure for pig slaughtering in 2019 is 403,673 which is up 2% against the same point last year.

[Further details available on page 14](#)

Sheepmeat

Sheepmeat
Prices (Ex.
VAT)

The national average price for the week commencing 04/02/2019 was €501.15 per 100Kg, an increase of 9.8% over the same week last year.

[Further details available on page 15](#)

Slaughtering

41,992 sheep were slaughtered at sheep export premises the week commencing 04/02/2019, compared to 47,665 in the same week of 2018. Sheep slaughtering for 2019 are 7% down on 2018 at 289,723 head.

Live Trade

Total live exports to European Countries stood at 20,769 head to the end of 2018.

Poultry

Slaughtering

Cumulative poultry slaughtering for 2019* stand at 12,127,150 birds at the end of week 6, up 10% compared to the same period last year.

[Further details available on page 17](#)

*Latest Figures are provisional and subject to change

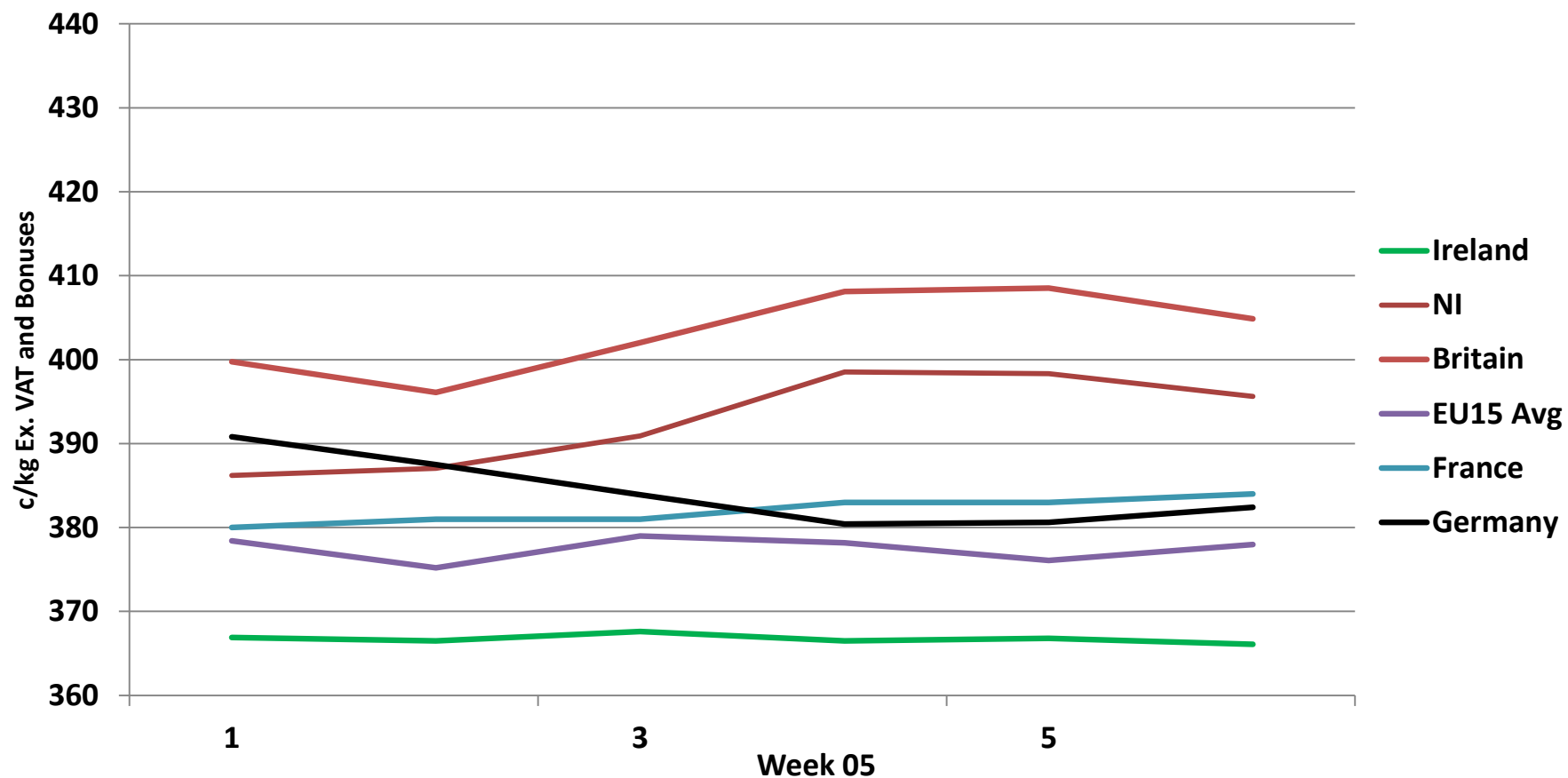
Dead Weight Prices	W/C	W/C	Same week 2018	% change prev week	% change 2018
	04/02/19	28/01/19	05/02/18		
Steers (R3) (c/kg)	366.1	366.8	382.9	-0.2%	-4.4%
Heifers (R3) (c/kg)	379.9	379.9	395.5	0.0%	-3.9%
Young Bulls (U3) (c/kg)	355.6	357.5	386.4	-0.5%	-8.0%
Cows (04) (c/kg)	269.1	269.1	322.4	0.0%	-16.5%

Live Weight Prices	W/C	W/C	Same week 2017	% change previous week	% change 2018
	04/02/19	28/01/19	05/02/18		
Yearlings (Male) (Aged 365 - 730 days) - (€/100Kg)	184	181	199	1.7%	-7.5%
Yearlings (Female) (Aged 365 - 730 days) - (€/100Kg)	203	190	204	6.8%	-0.5%
Young Stores (Male & Female) (Aged 180 - 364 days) - (€/100Kg)	213	206	236	3.4%	-9.7%
Bull Calf (€/head) Dairy	93.4	105.5	117.5	-11.5%	-20.5%
Bull Calf (€/head) Beef	202.3	216.9	251.8	-6.7%	-19.7%
Bull Calf (€/head) Average	147.8	161.2	184.7	-8.3%	-19.9%

Slaughter Figures	% of weekly figures	W/C	Same week 2018	Year to Date		Change 2019 v 2018	
		04-Feb-19		2019	2018	Head	%
Steers	30.8%	11,773	11,153	65,239	63,810	1,429	2.2%
Cows	20.9%	7,981	7,290	43,535	38,983	4,552	11.7%
Heifers	30.1%	11,497	10,000	66,484	59,940	6,544	10.9%
Young Bulls	16.9%	6,447	5,737	36,312	33,939	2,373	7.0%
Mature Bulls	1.4%	523	552	2,387	2,504	-117	-4.7%
Total	100%	38,221	34,732	213,957	199,176	14,781	7.4%

Live Exports	W/C	Same week	W/C	Year to Date		Change 2019 v 2018	
	4-Feb-19	2018	28-Jan-19	2019	2018	Head	%
Northern Ireland	569	332	940	3,401	1,448	1,953	135%
EU Except NI	4,011	1,351	2,099	9,637	3,492	6,145	176%
Third Countries	0	0	0	29	1,896	-1,867	-
Total	4,580	1,683	3,039	13,067	6,836	6,231	91%

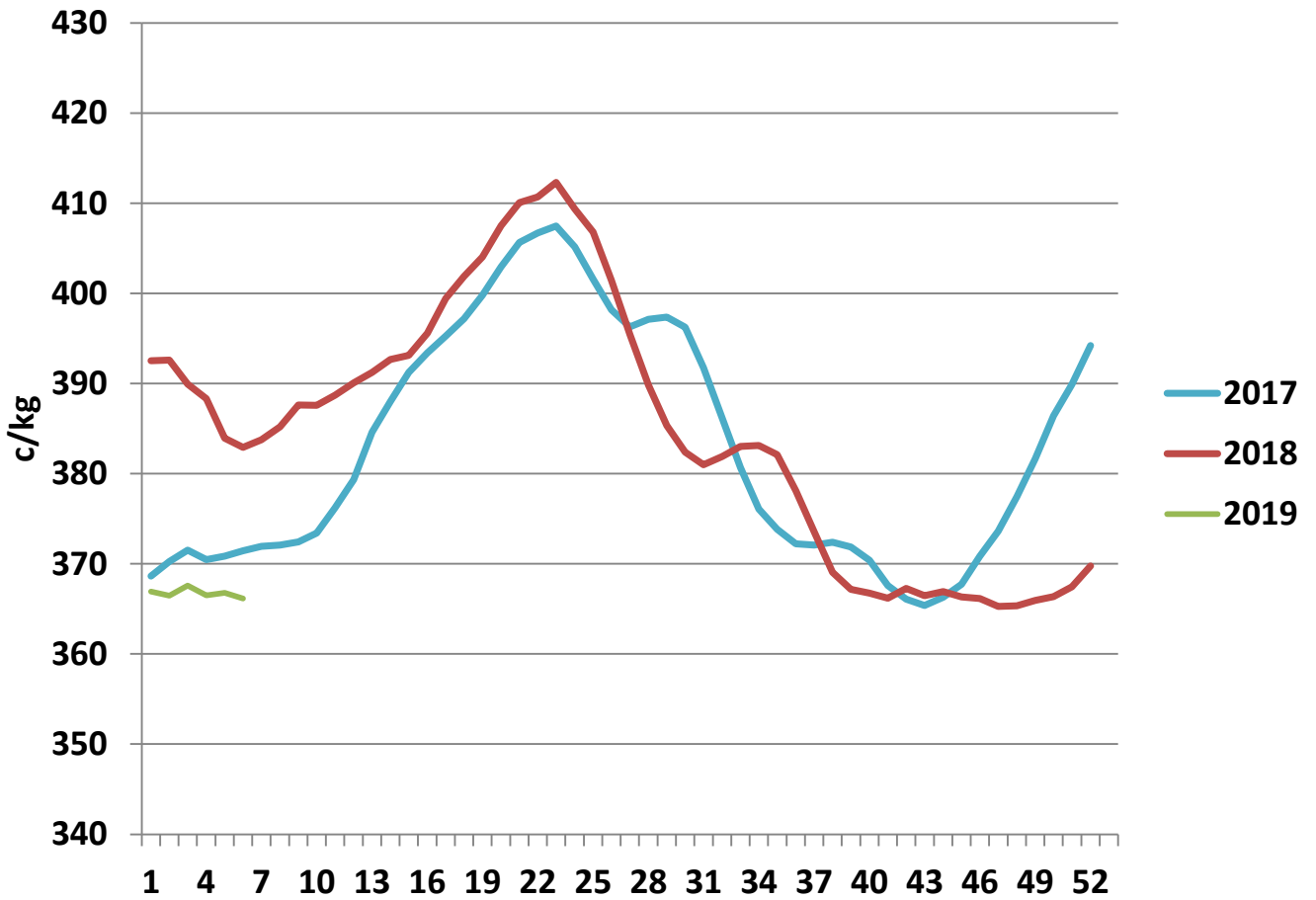
Irish Deadweight Cattle Prices vs Selected Other Markets, 2019



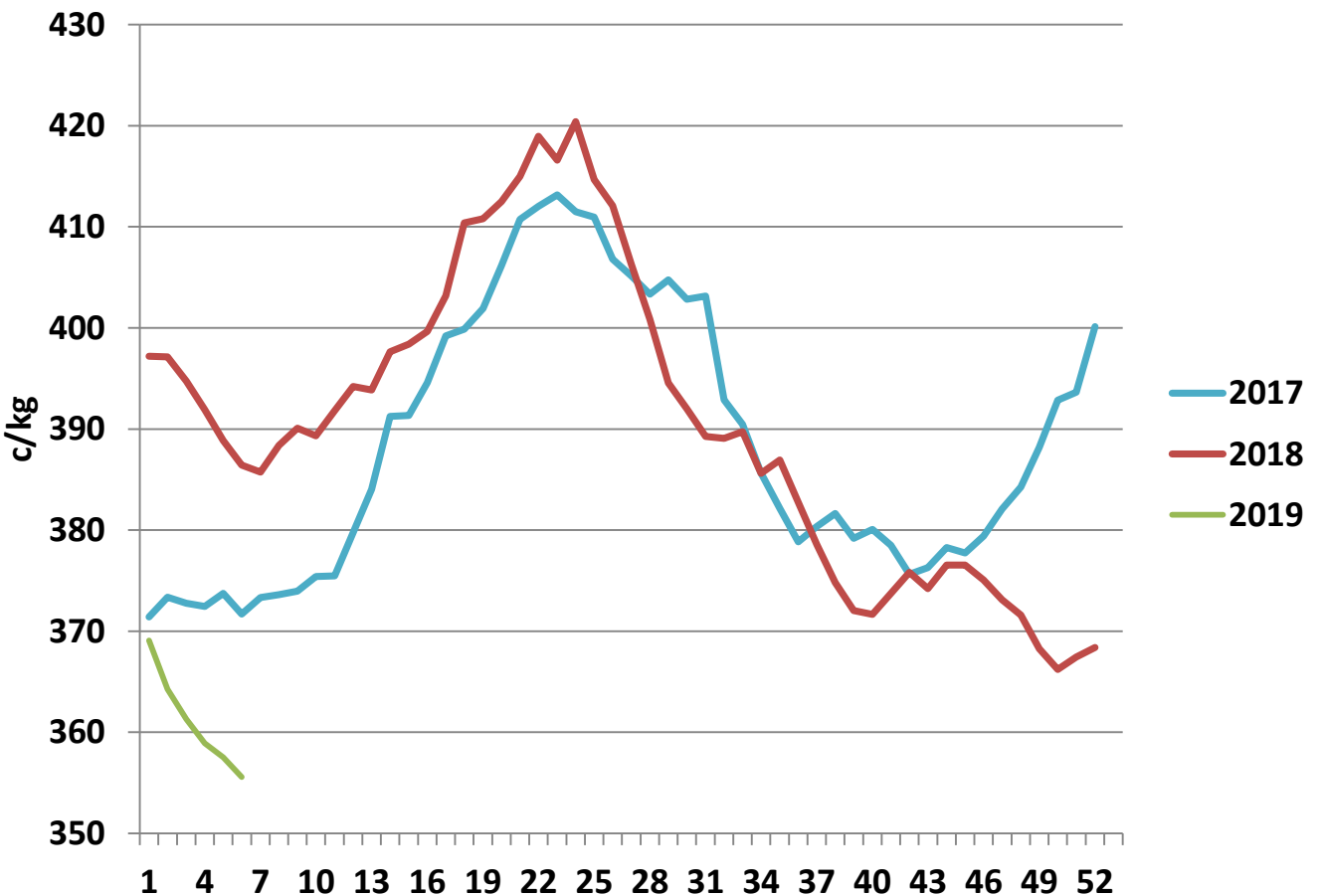
Livestock Pricing

	Ireland	NI	Britain	EU 15 Average	France	Germany
W/C 04/02/19	366.1	395.63	404.85	377.98	384	382.4

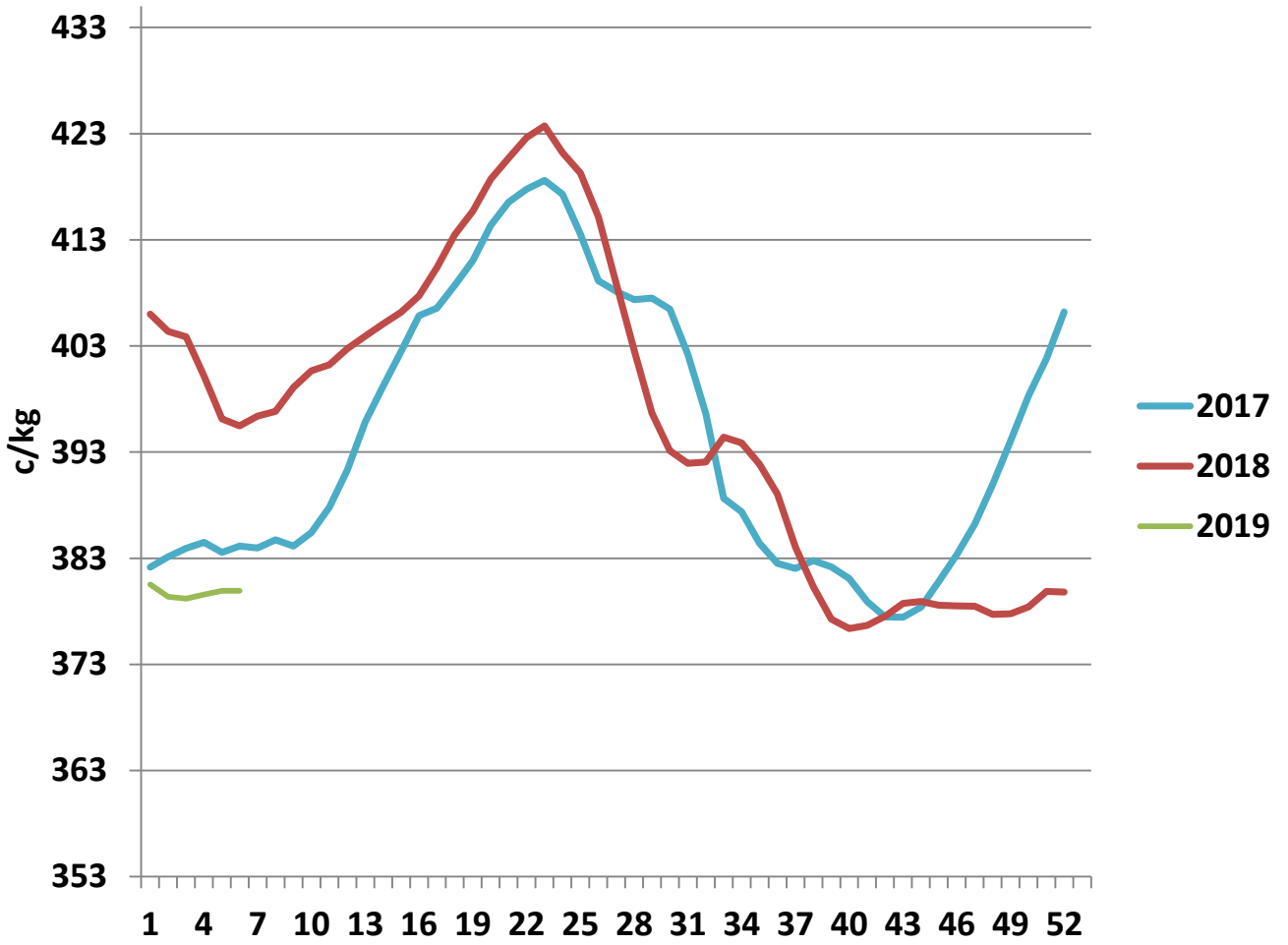
R3 Steer prices ex. VAT



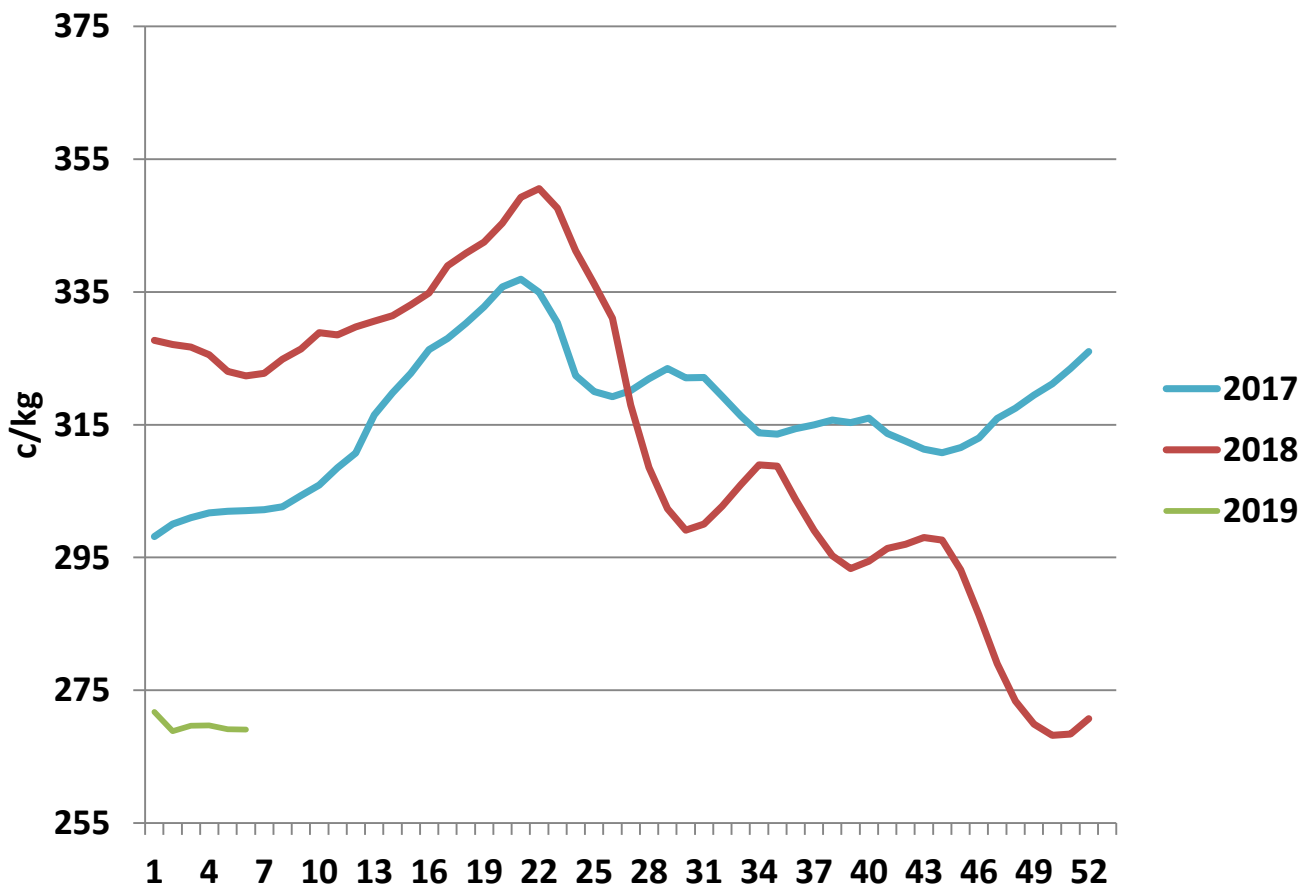
U3 Young Bull prices ex. VAT

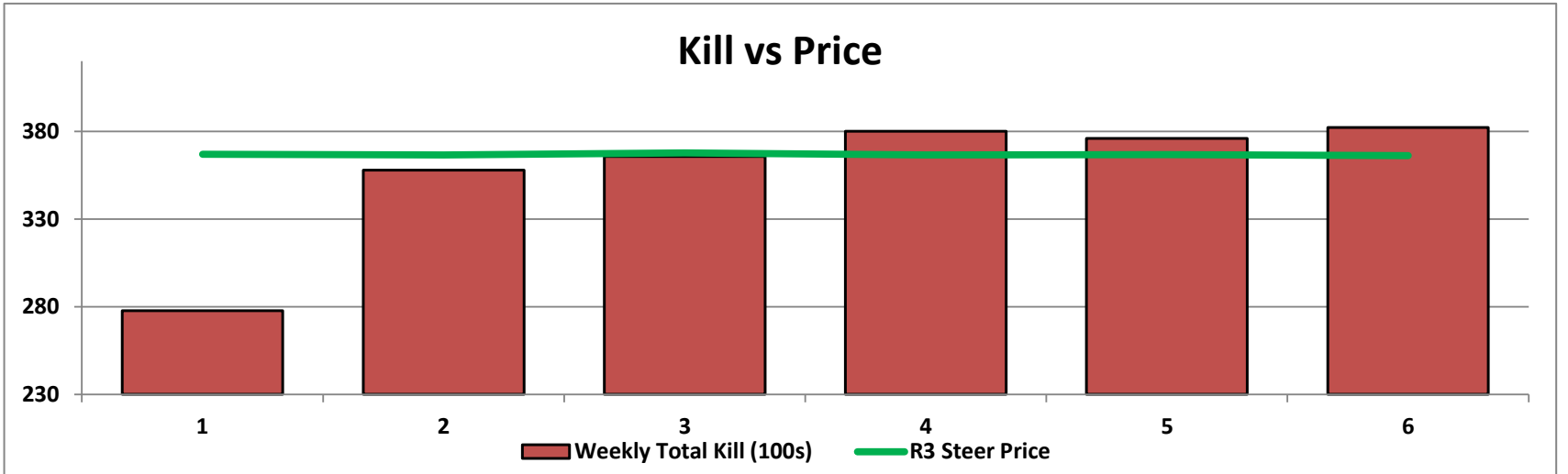
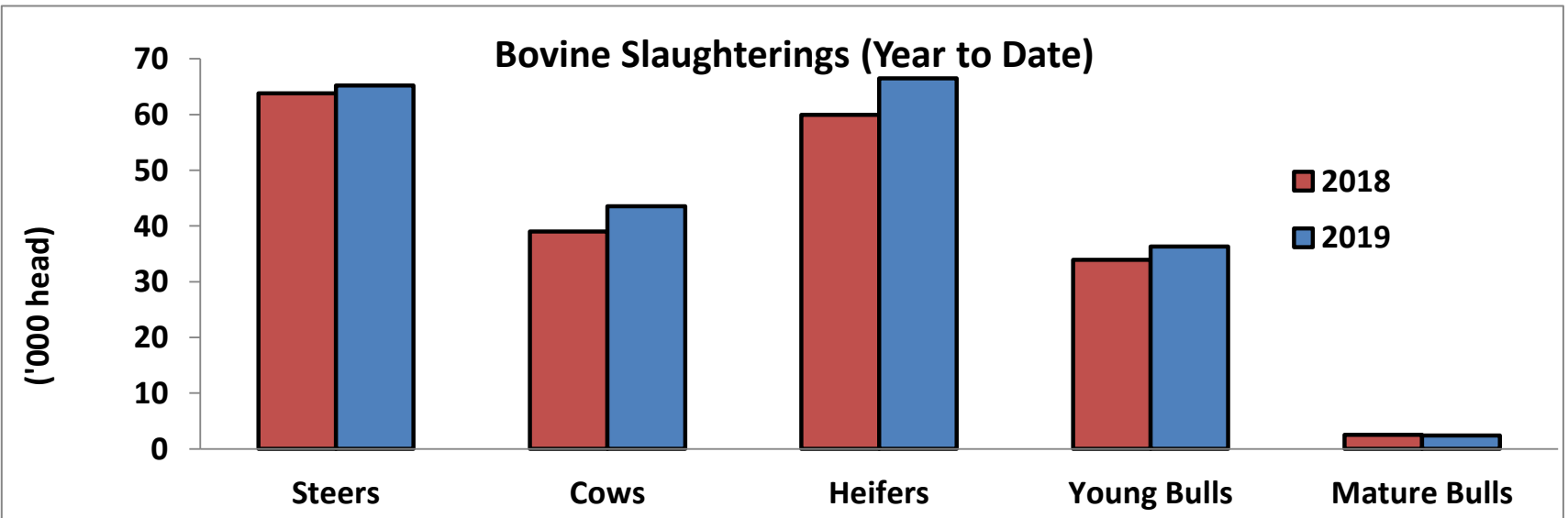
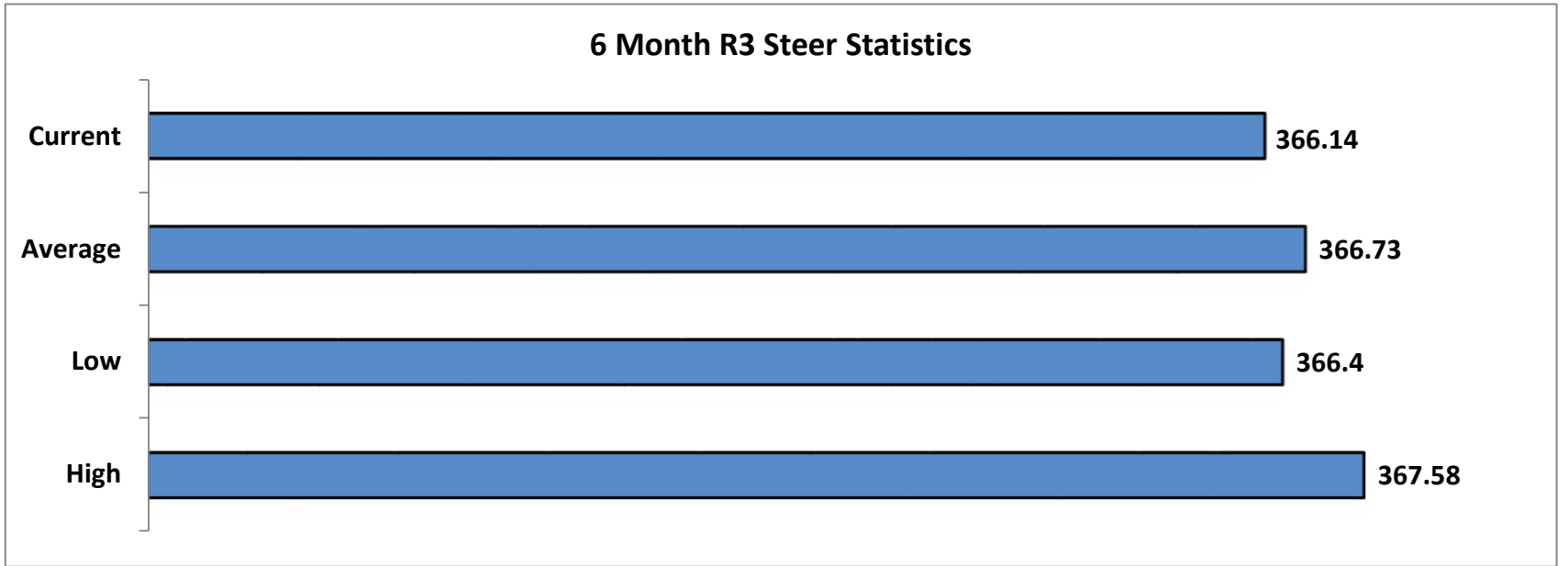


R3 Heifer prices ex. VAT

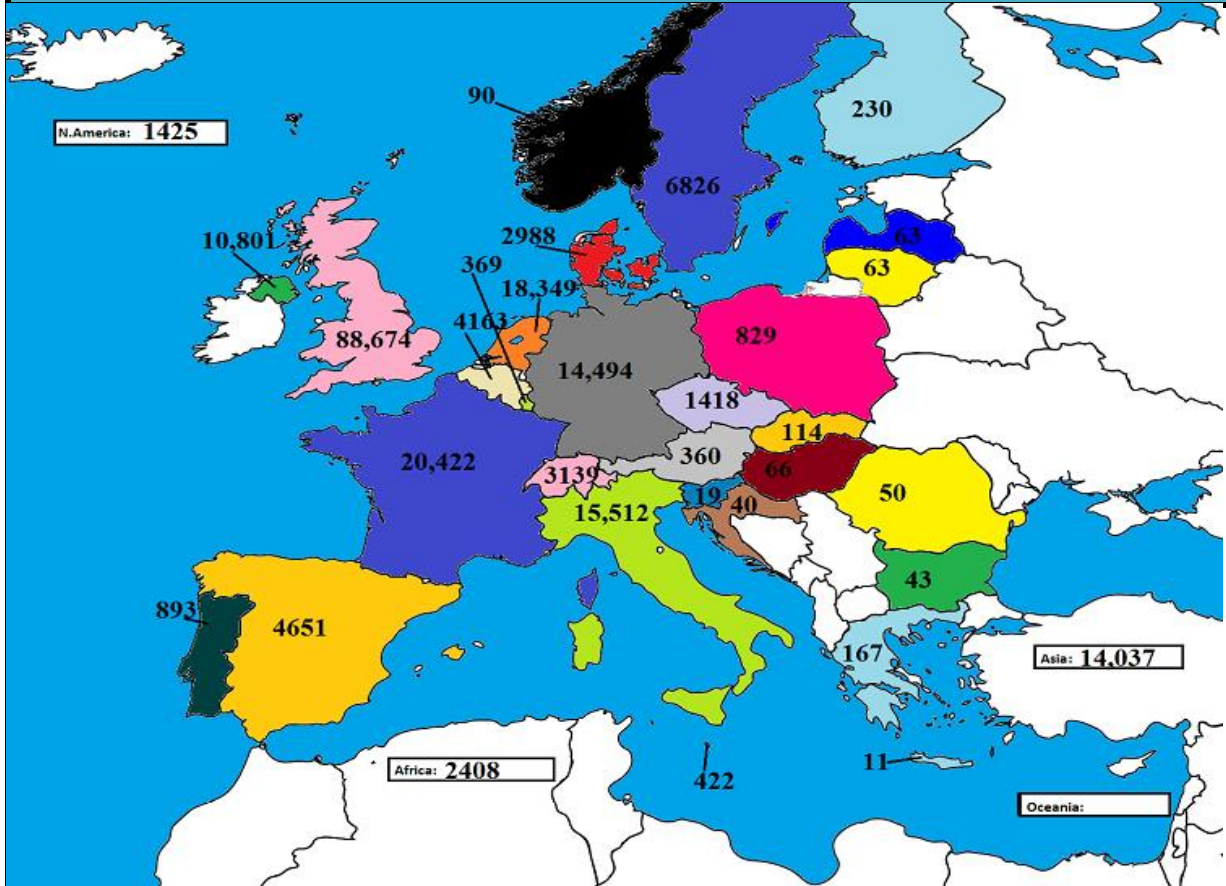


O4 Cow prices ex. VAT

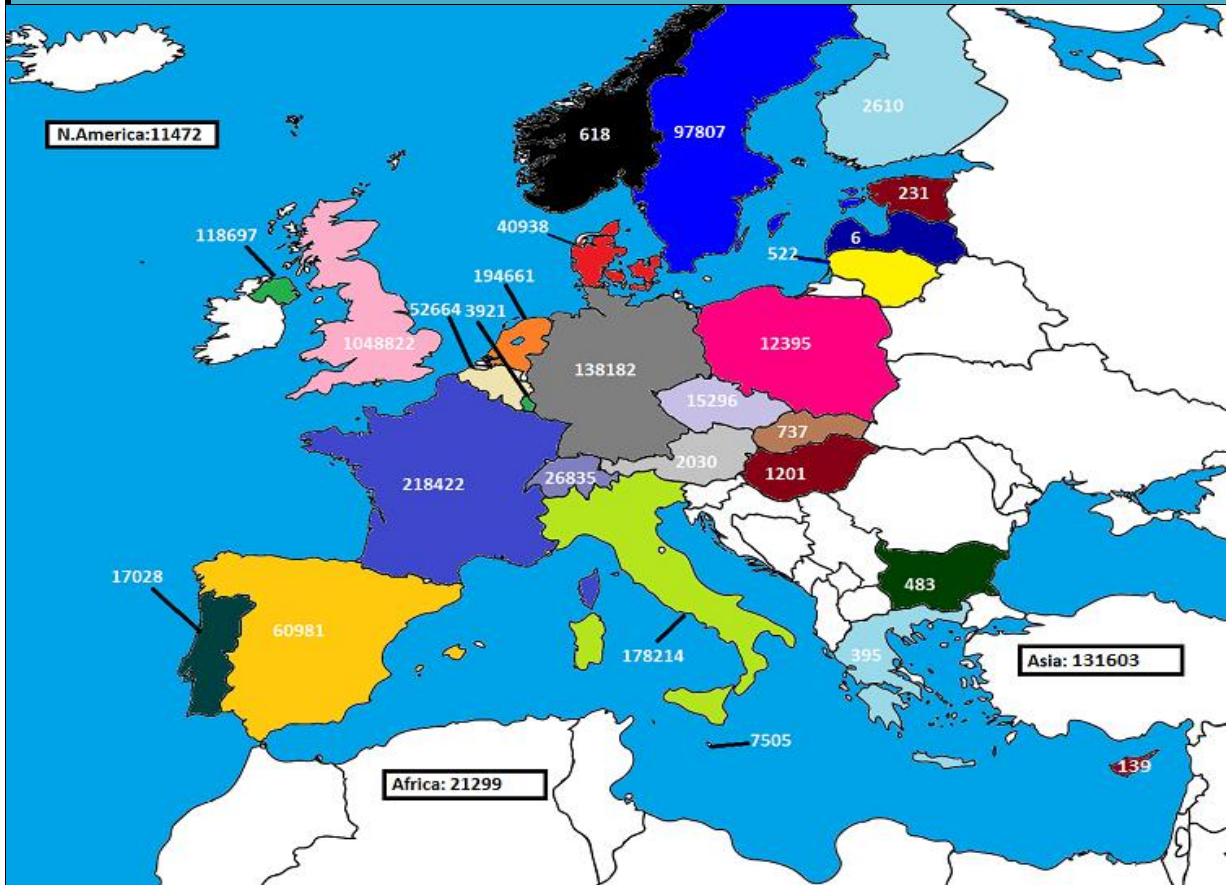




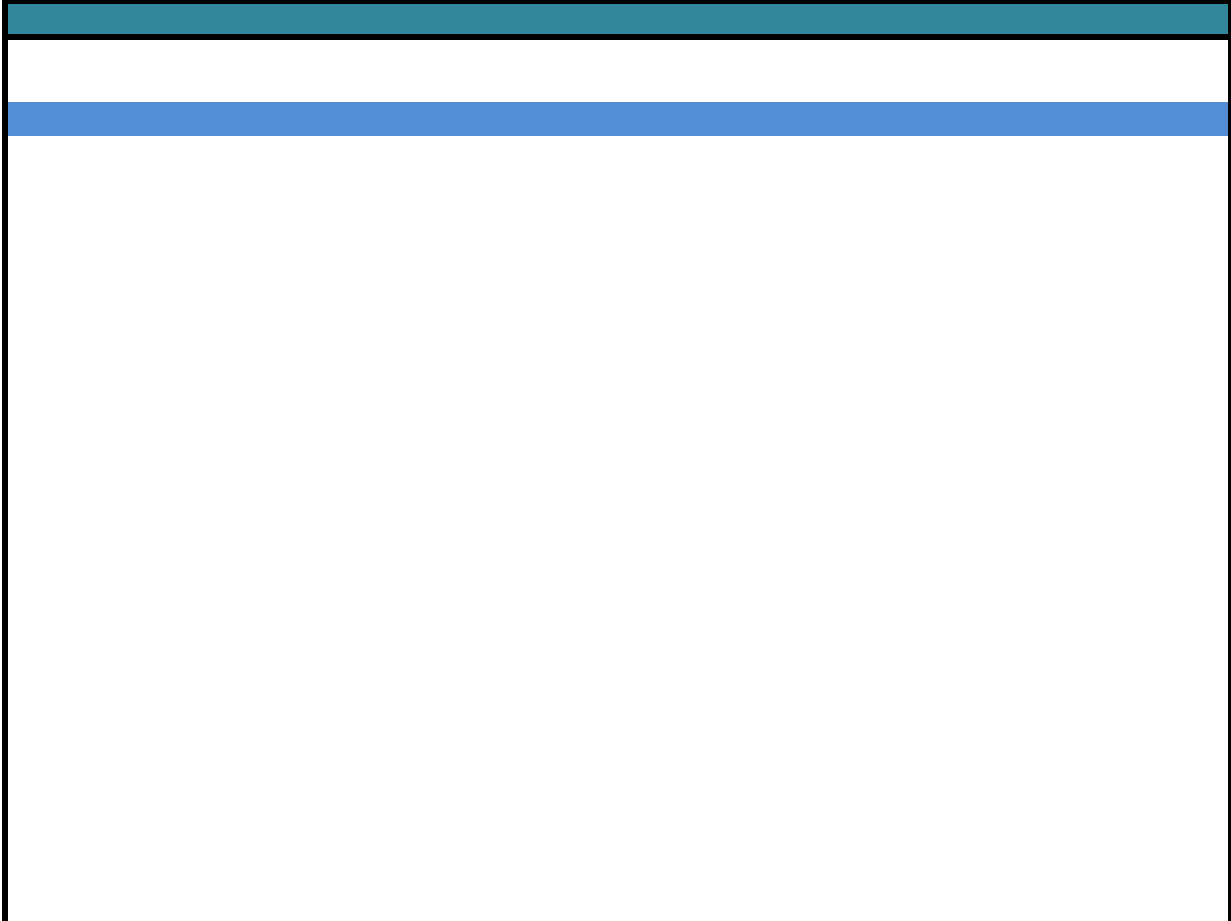
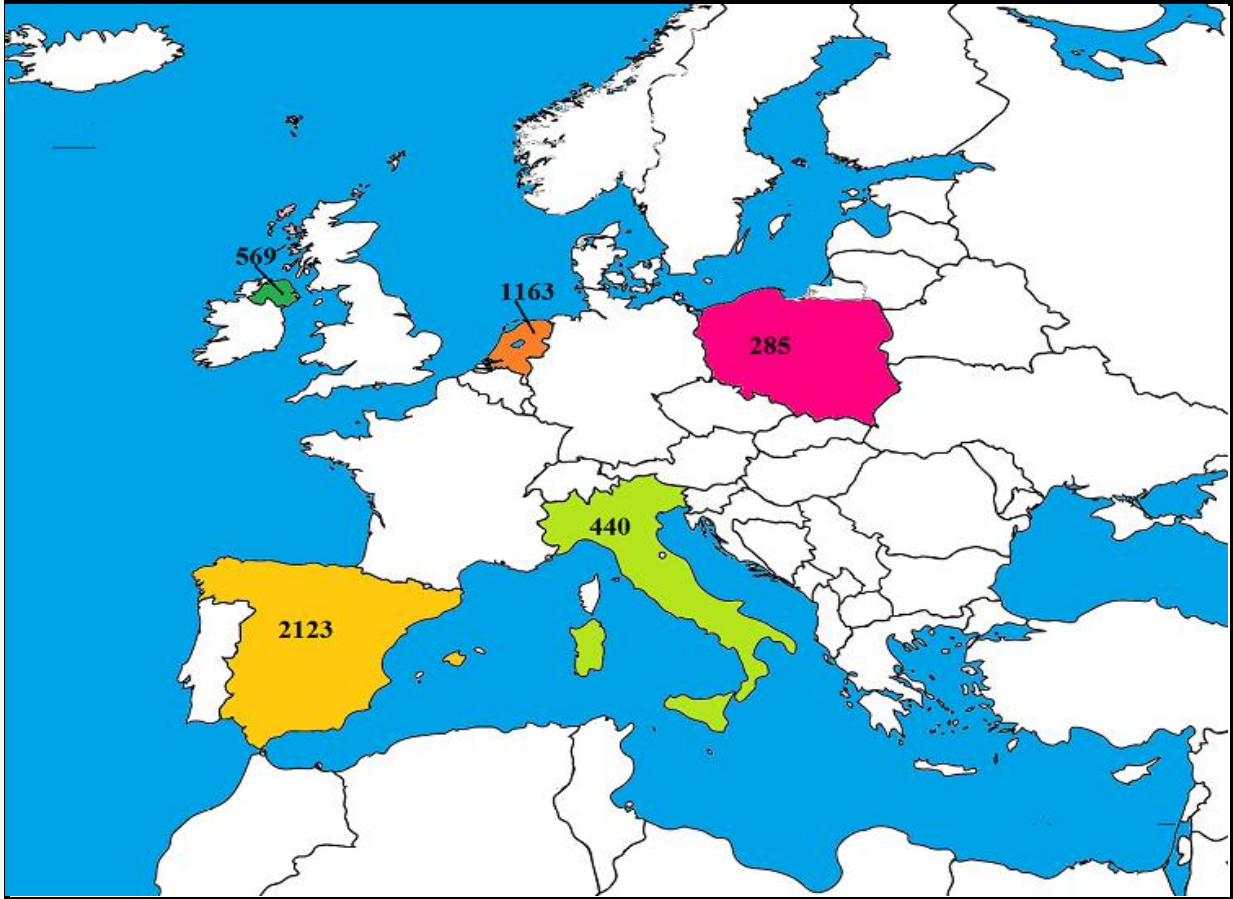
November 2018 Beef exports, €000 (CSO figures)



Cumulative beef exports to Dec 2017, €000 (CSO figures)

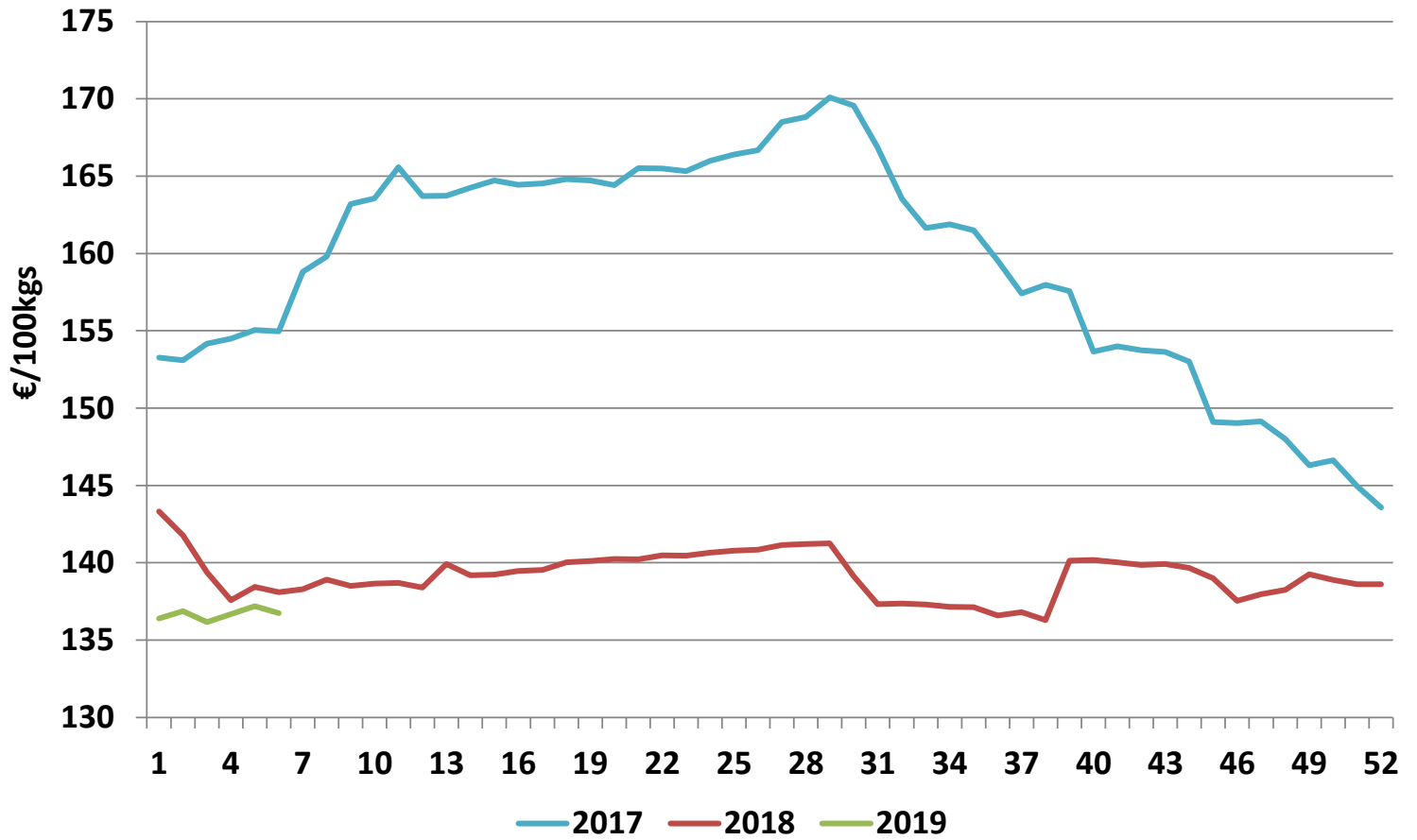


Cattle exported, w/c 04/02/19

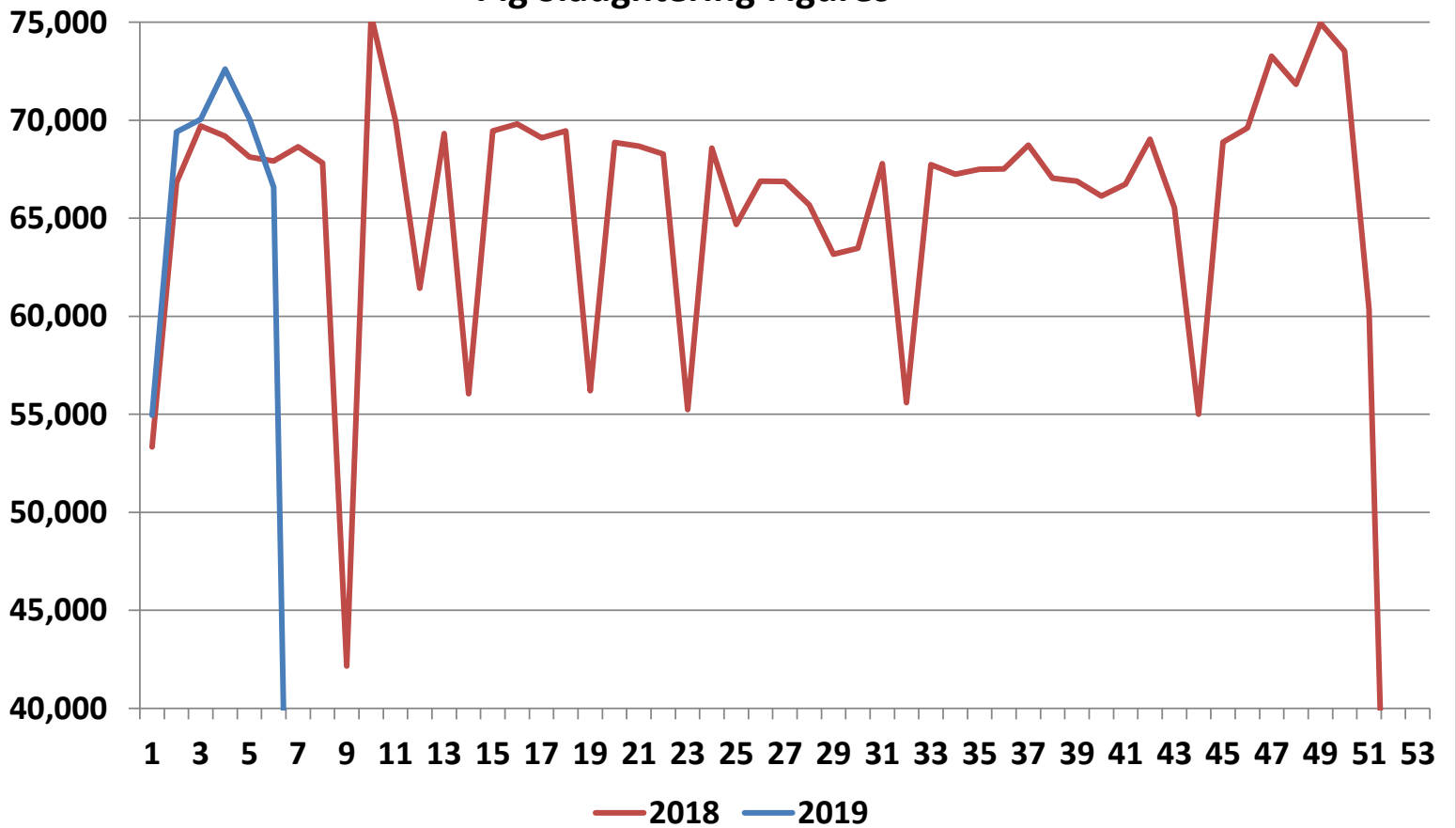


Irish Average Grade E Pig Prices - €/100kgs						
Week	2019	Weekly %	% change	2018	2017	
1	136.39		-4.8%	143.31	153.27	
2	136.87	0.4%	-3.4%	141.76	153.10	
3	136.17	-0.5%	-2.3%	139.39	154.17	
4	136.68	0.4%	-0.6%	137.57	154.48	
5	137.19	0.4%	-0.9%	138.43	155.06	
6	136.75	-0.3%	-1.0%	138.10	154.96	
7		-100.0%	-100.0%	138.30	158.82	
8		-	-100.0%	138.92	159.79	
9		-	-100.0%	138.51	163.19	
10		-	-100.0%	138.66	163.55	
11		-	-100.0%	138.69	165.58	
12		-	-100.0%	138.40	163.71	
13		-	-100.0%	139.93	163.72	
14		-	-100.0%	139.20	164.25	
15		-	-100.0%	139.23	164.71	
16		-	-100.0%	139.47	164.43	
17		-	-100.0%	139.54	164.52	
18		-	-100.0%	140.02	164.80	
19		-	-100.0%	140.12	164.71	
20		-	-100.0%	140.25	164.42	
21		-	-100.0%	140.22	165.52	
22		-	-100.0%	140.48	165.50	
23		-	-100.0%	140.47	165.33	
24		-	-100.0%	140.66	165.99	
25		-	-100.0%	140.79	166.39	
26		-	-100.0%	140.84	166.68	
27		-	-100.0%	141.14	168.50	
28		-	-100.0%	141.21	168.83	
29		-	-100.0%	141.26	170.09	
30		-	-100.0%	139.12	169.56	
31		-	-100.0%	137.33	166.84	
32		-	-100.0%	137.37	163.53	
33		-	-100.0%	137.30	161.65	
34		-	-100.0%	137.15	161.88	
35		-	-100.0%	137.13	161.49	
36		-	-100.0%	136.59	159.53	
37		-	-100.0%	136.80	157.41	
38		-	-100.0%	136.29	157.97	
39		-	-100.0%	140.14	157.57	
40		-	-100.0%	140.17	153.65	
41		-	-100.0%	140.04	154.00	
42		-	-100.0%	139.85	153.73	
43		-	-100.0%	139.93	153.64	
44		-	-100.0%	139.67	153.01	
45		-	-100.0%	139.00	149.10	
46		-	-100.0%	137.54	149.04	
47		-	-100.0%	137.96	149.13	
48		-	-100.0%	138.24	148.01	
49		-	-100.0%	139.25	146.30	
50		-	-100.0%	138.89	146.62	
51		-	-100.0%	138.62	144.94	
52		-	-100.0%	138.62	143.57	

Average Grade E Pig Price



Pig Slaughtering Figures



Pig Slaughtering Figures at Export Approved Plants

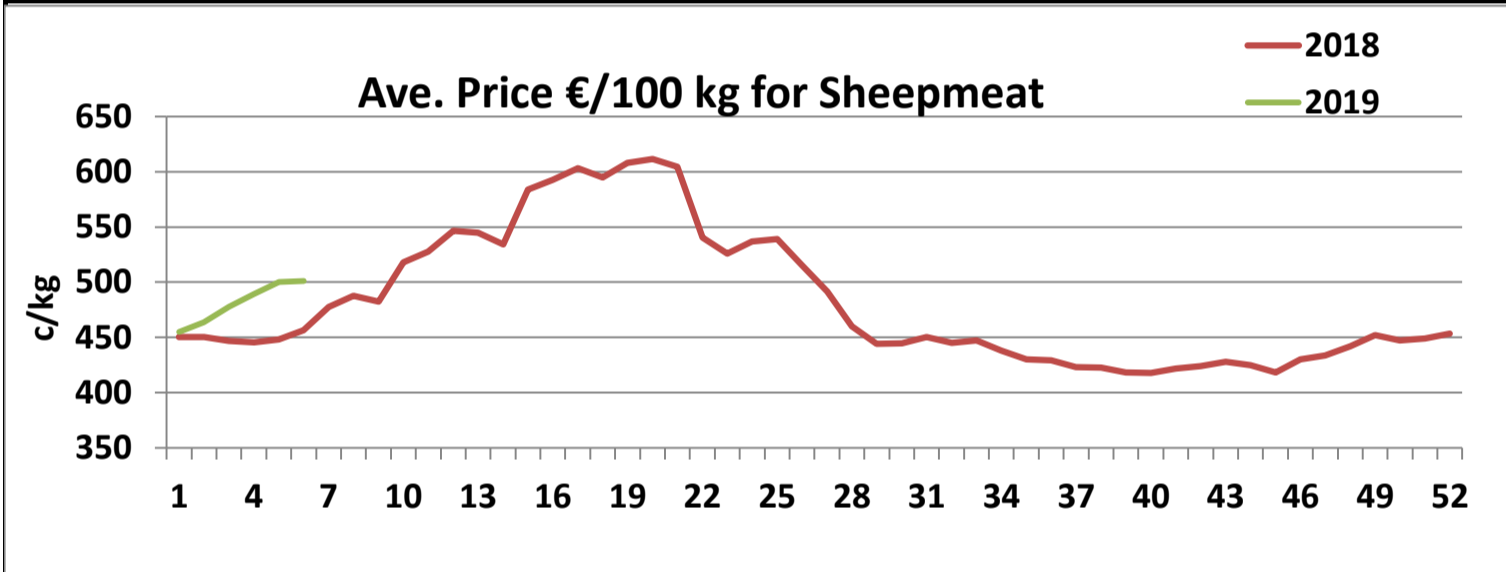
2019							2018				
Week	Pigs	Sows	Total	Cum	2019v2018	% Diff	Week	Pigs	Sows	Total	Cum
1	53,001	1,944	54,945	54,945	1,616	3%	1	51,490	1,839	53,329	53,329
2	67,781	1,629	69,410	124,355	4,199	3%	2	64,796	2,031	66,827	120,156
3	68,263	1,782	70,045	194,400	4,534	2%	3	68,008	1,702	69,710	189,866
4	70,203	2,411	72,614	267,014	7,963	3%	4	67,302	1,883	69,185	259,051
5	67,855	2,215	70,070	337,084	9,905	3%	5	65,886	2,242	68,128	327,179
6	64,756	1,833	66,589	403,673	8,570	2%	6	66,072	1,852	67,924	395,103
7				403,673	-60,084	-13%	7	66,751	1,903	68,654	463,757
8				403,673	-127,909	-24%	8	65,920	1,905	67,825	531,582
9				403,673	-170,062	-30%	9	41,794	359	42,153	573,735
10				403,673	-245,417	-38%	10	72,970	2,385	75,355	649,090
11				403,673	-315,362	-44%	11	68,008	1,937	69,945	719,035
12				403,673	-376,793	-48%	12	59,506	1,925	61,431	780,466
13				403,673	-446,119	-52%	13	67,692	1,634	69,326	849,792
14				403,673	-502,171	-55%	14	54,379	1,673	56,052	905,844
15				403,673	-571,622	-59%	15	67,346	2,105	69,451	975,295
16				403,673	-641,435	-61%	16	67,791	2,022	69,813	1,045,108
17				403,673	-710,534	-64%	17	67,224	1,875	69,099	1,114,207
18				403,673	-779,998	-66%	18	67,453	2,011	69,464	1,183,671
19				403,673	-836,190	-67%	19	54,510	1,682	56,192	1,239,863
20				403,673	-905,063	-69%	20	67,150	1,723	68,873	1,308,736
21				403,673	-973,745	-71%	21	66,590	2,092	68,682	1,377,418
22				403,673	-1,042,020	-72%	22	66,404	1,871	68,275	1,445,693
23				403,673	-1,097,265	-73%	23	53,696	1,549	55,245	1,500,938
24				403,673	-1,165,851	-74%	24	66,779	1,807	68,586	1,569,524
25				403,673	-1,230,539	-75%	25	62,897	1,791	64,688	1,634,212
26				403,673	-1,297,438	-76%	26	65,378	1,521	66,899	1,701,111
27				403,673	-1,364,312	-77%	27	64,921	1,953	66,874	1,767,985
28				403,673	-1,429,987	-78%	28	63,997	1,678	65,675	1,833,660
29				403,673	-1,493,147	-79%	29	61,430	1,730	63,160	1,896,820
30				403,673	-1,556,610	-79%	30	62,022	1,441	63,463	1,960,283
31				403,673	-1,624,395	-80%	31	66,189	1,596	67,785	2,028,068
32				403,673	-1,679,982	-81%	32	53,699	1,888	55,587	2,083,655
33				403,673	-1,747,717	-81%	33	65,461	2,274	67,735	2,151,390
34				403,673	-1,814,957	-82%	34	65,202	2,038	67,240	2,218,630
35				403,673	-1,882,465	-82%	35	65,350	2,158	67,508	2,286,138
36				403,673	-1,949,984	-83%	36	65,293	2,226	67,519	2,353,657
37				403,673	-2,018,708	-83%	37	67,118	1,606	68,724	2,422,381
38				403,673	-2,085,745	-84%	38	65,039	1,998	67,037	2,489,418
39				403,673	-2,152,631	-84%	39	65,375	1,511	66,886	2,556,304
40				403,673	-2,218,758	-85%	40	63,832	2,295	66,127	2,622,431
41				403,673	-2,285,503	-85%	41	64,943	1,802	66,745	2,689,176
42				403,673	-2,354,543	-85%	42	66,870	2,170	69,040	2,758,216
43				403,673	-2,420,094	-86%	43	63,792	1,759	65,551	2,823,767
44				403,673	-2,475,097	-86%	44	53,298	1,705	55,003	2,878,770
45				403,673	-2,543,972	-86%	45	67,201	1,674	68,875	2,947,645
46				403,673	-2,613,580	-87%	46	67,488	2,120	69,608	3,017,253
47				403,673	-2,686,845	-87%	47	71,192	2,073	73,265	3,090,518
48				403,673	-2,758,682	-87%	48	69,965	1,872	71,837	3,162,355
49				403,673	-2,833,634	-88%	49	73,120	1,832	74,952	3,237,307
50				403,673	-2,907,176	-88%	50	71,181	2,361	73,542	3,310,849
51				403,673	-2,967,521	-88%	51	60,190	155	60,345	3,371,194
52				403,673	-2,983,207	-88%	52	15,237	449	15,686	3,386,880
53				403,673			53				
Overall Total	53,001	1,944	54,945	267,014			Overall Total	3,293,197	93,683	3,386,880	

Sheepmeat Information for week 6

Irish Prices €/100 kg	2019	2018	Change
Ave Factory Price	517.85	485.05	6.8%
Ave Mart Price	462.16	389.24	18.7%
National Ave Price	501.15	456.31	9.8%
YTD Ave	481.11	449.51	7.0%

Slaughterings	2019	2018	Change
Weekly	41,992	47,665	-12%
YTD	289,724	312,290	-7%

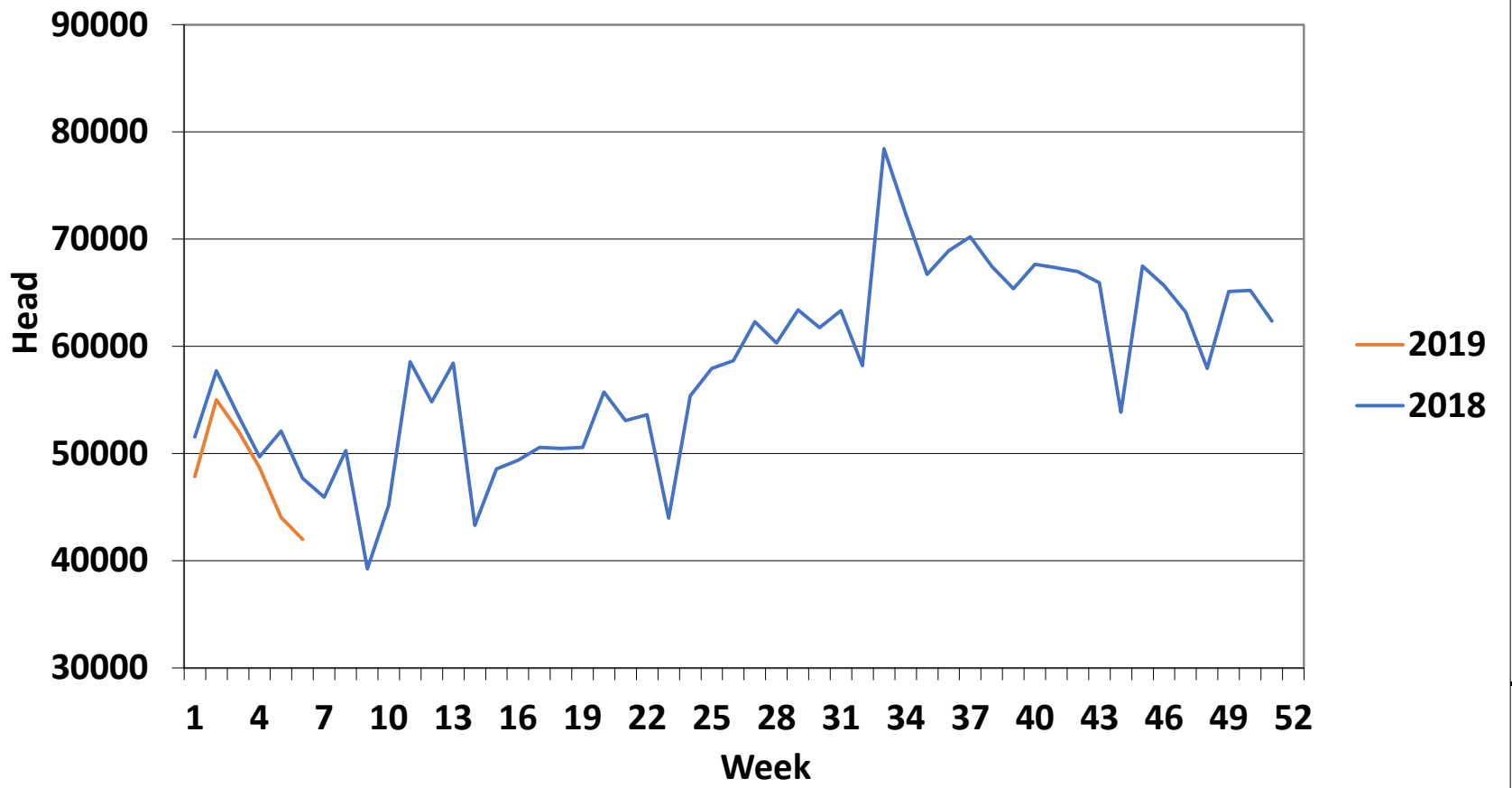
EU Market Rates Heavy Lambs	€/100kg	% of Community Price
Belgium	471.4	94%
Denmark	459.9	92%
Germany	498.1	100%
Spain	508.0	102%
France	569.0	114%
Croatia	369.3	74%
Ireland	501.2	100%
Italy	526.0	105%
Cyprus	524.0	105%
Latvia	385.5	77%
Lithuania	367.8	74%
Netherlands	488.1	98%
Austria	577.0	116%
Poland	434.3	87%
Romania	248.4	50%
Finland	353.8	71%
Sweden	477.2	96%
Northern Ireland	481.6	97%
Great Britain	485.5	97%
United Kingdom	485.2	97%
Community	498.9	100%



REPORT ON SLAUGHTERING AT SHEEP EXPORT PREMISES
WEEK 06

CATEGORY	2019		2018		DIFFERENCE	
	Weekly	Cumulative	Weekly	Cumulative	Weekly	Cumulative
Lambs/Hoggets	35,353	223,724	39,214	262,479	-3861	38,755
Spring Lambs	-	12,825	-	-	0	12,825
Ewes and Rams	6,639	53,174	8,451	49,790	-1,812	3,384
Light Lambs	-	1	-	21	0	20
TOTAL	41,992	289,724	47,665	312,290	-5,673	-22,566

Weekly Sheep Slaughtering



Comparison of Poultry Slaughter Figures Between 2018 and 2019						
WEEK	2019 weekly	2019 cumulative	2018 weekly	2018 cumulative	2018 v 2019	% difference
1	1,601,081	1,601,081	1,625,961	1,625,961	-24,880	-1.5%
2	2,186,960	3,788,041	1,969,356	3,595,317	192,724	5.4%
3	2,150,267	5,938,308	1,932,194	5,527,511	410,797	7.4%
4	2,088,739	8,027,047	1,886,770	7,414,281	612,766	8.3%
5	2,113,309	10,140,356	1,800,824	9,215,105	925,251	10.0%
6	1,986,794	12,127,150	1,994,979	11,028,136	1,099,014	10.0%
7	0	12,127,150	1,808,499	12,836,628	-12,836,628	-100.0%
8	0	12,127,150	1,922,060	14,758,688	-14,758,688	-100.0%
9	0	12,127,150	1,516,700	16,275,388	-16,275,388	-100.0%
10	0	12,127,150	2,159,284	18,434,672	-18,434,672	-100.0%
11	0	12,127,150	1,957,072	20,391,744	-20,391,744	-100.0%
12	0	12,127,150	1,734,665	22,126,409	-22,126,409	-100.0%
13	0	12,127,150	1,874,839	24,001,248	-24,001,248	-100.0%
14	0	12,127,150	1,755,145	25,756,393	-25,756,393	-100.0%
15	0	12,127,150	1,963,967	27,720,360	-27,720,360	-100.0%
16	0	12,127,150	2,008,587	29,728,947	-29,728,947	-100.0%
17	0	12,127,150	1,994,979	31,723,926	-31,723,926	-100.0%
18	0	12,127,150	1,944,920	33,668,846	-33,668,846	-100.0%
19	0	12,127,150	1,749,772	35,418,618	-35,418,618	-100.0%
20	0	12,127,150	2,007,305	37,425,923	-37,425,923	-100.0%
21	0	12,127,150	1,948,360	39,374,283	-39,374,283	-100.0%
22	0	12,127,150	1,965,217	41,339,500	-41,339,500	-100.0%
23	0	12,127,150	1,726,225	43,065,725	-43,065,725	-100.0%
24	0	12,127,150	1,881,726	44,947,451	-44,947,451	-100.0%
25	0	12,127,150	1,904,281	46,851,732	-46,851,732	-100.0%
26	0	12,127,150	1,934,425	48,786,157	-48,786,157	-100.0%
27	0	12,127,150	1,818,807	50,604,964	-50,604,964	-100.0%
28	0	12,127,150	1,929,607	52,534,571	-52,534,571	-100.0%
29	0	12,127,150	2,022,893	54,557,464	-54,557,464	-100.0%
30	0	12,127,150	1,912,787	56,470,251	-56,470,251	-100.0%
31	0	12,127,150	2,013,496	58,483,747	-58,483,747	-100.0%
32	0	12,127,150	1,724,075	60,207,822	-60,207,822	-100.0%
33	0	12,127,150	1,923,341	62,131,163	-62,131,163	-100.0%
34	0	12,127,150	1,932,984	64,064,147	-64,064,147	-100.0%
35	0	12,127,150	1,990,167	66,054,314	-66,054,314	-100.0%
36	0	12,127,150	1,958,476	68,012,790	-68,012,790	-100.0%
37	0	12,127,150	1,954,910	69,967,700	-69,967,700	-100.0%
38	0	12,127,150	1,944,867	71,912,567	-71,912,567	-100.0%
39	0	12,127,150	1,927,534	73,840,101	-73,840,101	-100.0%
40	0	12,127,150	1,859,440	75,699,541	-75,699,541	-100.0%
41	0	12,127,150	1,868,389	77,567,930	-77,567,930	-100.0%
42	0	12,127,150	1,853,452	79,421,382	-79,421,382	-100.0%
43	0	12,127,150	1,982,639	81,404,021	-81,404,021	-100.0%
44	0	12,127,150	1,764,735	83,168,756	-83,168,756	-100.0%
45	0	12,127,150	1,876,069	85,044,825	-85,044,825	-100.0%
46	0	12,127,150	2,048,853	87,093,678	-87,093,678	-100.0%
47	0	12,127,150	1,864,758	88,958,436	-88,958,436	-100.0%
48	0	12,127,150	2,133,394	91,091,830	-91,091,830	-100.0%
49	0	12,127,150	3,850,235	94,942,065	-94,942,065	-100.0%
50	0	12,127,150	2,140,398	97,082,463	-97,082,463	-100.0%
51	0	12,127,150	1,975,187	99,057,650	-99,057,650	-100.0%
52	0	12,127,150	1,288,787	100,346,437	-100,346,437	-100.0%