

# Meat Market Report

01/04/19 - 07/04/19

Week

14



**An Roinn Talmhaíochta,  
Bia agus Mara**  
Department of Agriculture,  
Food and the Marine

# MARKET SUMMARY

## Beef

### Deadweight Prices c/100Kg (Including VAT)

	U3	U4	R3	R4	O3	O4	P+
Steers	393.6	390.7	382.5	383.3	365.6	367.6	341.8
Heifers	412.4	412.8	396.1	398.3	378.0	380.6	343.6
Young Bulls	365.8	360.9	351.9	347.0	333.6	335.9	307.3
Cows			307.8	309.4	284.2	284.3	273.3

### Liveweight Prices

*Bull Calf Average Price	€133.2 per head (Excluding VAT)
**Young Store Average Price	€218.0 per 100kg (Excluding VAT)
***Yearling (male & female) Price	€194.0 per 100kg (Excluding VAT)

\* Aged 8-28 days \*\* Aged 180-364 days, Male & Female \*\*\*age 365-730 days

### Slaughterings

35,494 cattle slaughtered this week, of which steers were 11,880 (34%), heifers 10,981 (31%), young bulls 4,823 (14%) and cows 6,658 (19%). Total YTD slaughter is 494,814 compared to 460,419 in 2018, a 8% increase.

### Live Trade

18,354 cattle were exported in the week commencing 25/03/2019 15,573 to EU (Except NI). Live exports for 2019 amount to 107,013 compared to 79,226 in 2018, up 35% on 2018 levels.

\*This data is provisional and subject to revision.

The next meeting of the Management Committee for the Common Organisation of Agricultural Markets (Animal Products Sector) is 17th April 2019

### CONTENTS:

Page 2: Market Summary Beef  
 Page 3: Market Summary Other Meats  
 Page 4: Beef Price and Slaughter Summary  
 Page 5: Comparative Beef Prices  
 Page 6: Steer and Young Bull Price  
 Page 7: Heifer and Cow Graphs  
 Page 8: Price and Slaughter Graphs  
 Page 9: Liveweight Beef Graphs

Page 10: Beef Export Maps  
 Page 11: Beef Export Info  
 Page 12: Pig price and slaughter graphs  
 Page 13: Sheep prices and slaughter  
 Page 15: Sheep price and slaughter graphs

# MARKET SUMMARY

## Pigmeat

Grade E Pig  
Prices (Ex.  
VAT)

The Grade E Pig price for week commencing 01/04/2019 was €146.26 per 100Kg. in comparison to €139.20 in the same week last year, which represents a 4.0% increase.

Slaughtering

65,490 pigs were slaughtered in week 14 of which 1,923 were sows. The cumulative figure for pig slaughterings in 2019 is 932,502 which is up 3% against the same point last year.

## Sheepmeat

Sheepmeat  
Prices (Ex.  
VAT)

The national average price for the week commencing 01/04/2019 was €505.41 per 100Kg, a decrease of 5% over the same week last year.

Slaughtering

48,668 sheep were slaughtered at sheep export premises the week commencing 01/04/2019, compared to 43,308 in the same week of 2018. Sheep slaughterings for 2019 are 14% down on 2018 at 610,561 head.

Live Trade

Total live exports to European Countries stood at 20,769 head to the end of 2018.

## Poultry

Slaughtering

Cumulative poultry slaughterings for 2019\* stand at 26,480,093 birds at the end of week 13, up 10% compared to the same period last year.

\*Latest Figures are provisional and subject to change

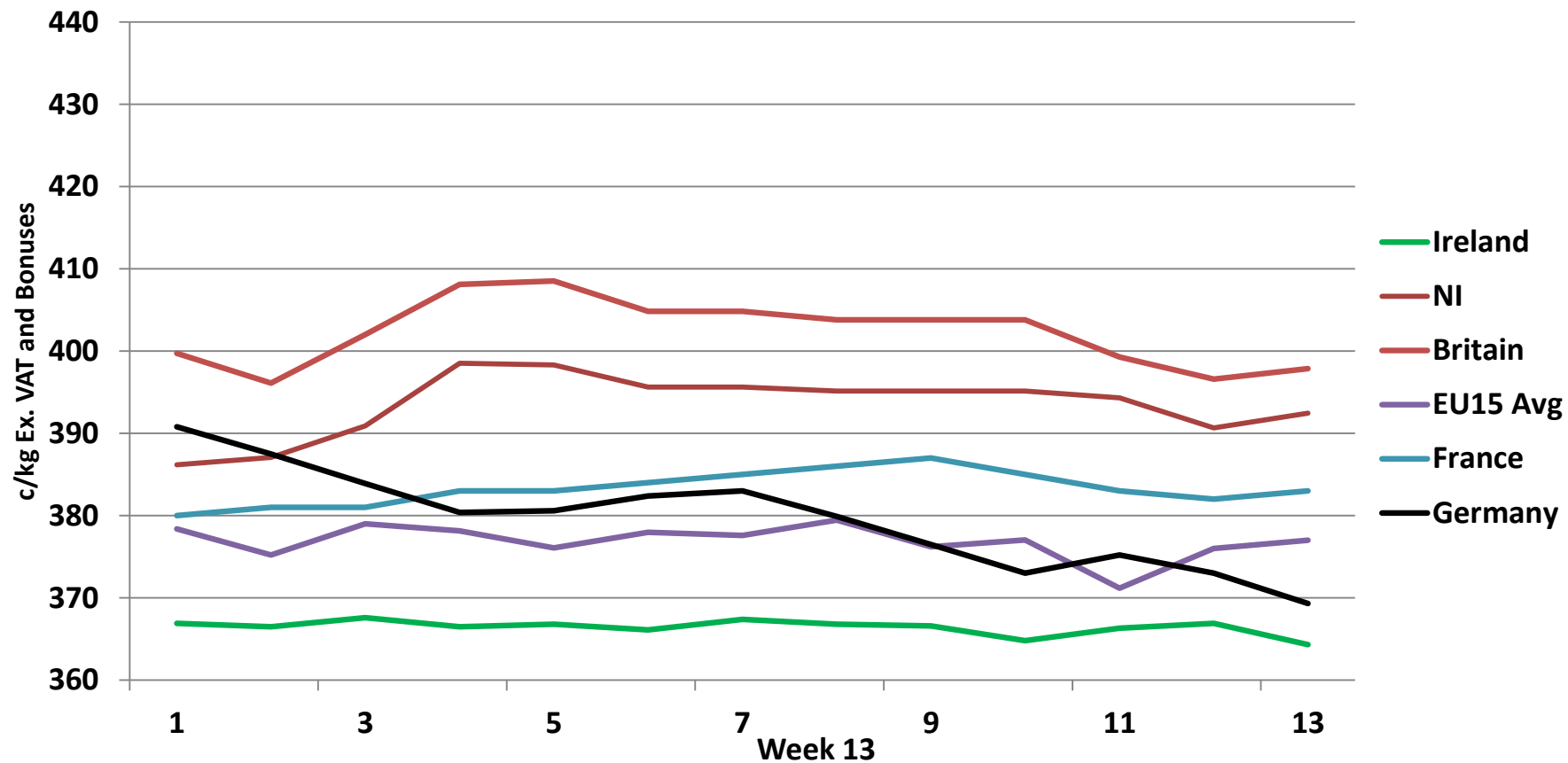
Dead Weight Prices	W/C	W/C	Same week 2018	% change prev week	% change 2018
	01/04/19	25/03/19	02/04/18		
Steers (R3) (c/kg)	362.9	363.7	392.7	-0.2%	-7.6%
Heifers (R3) (c/kg)	375.8	378.6	405.1	-0.7%	-7.2%
Young Bulls (U3) (c/kg)	347.0	346.1	397.6	0.3%	-12.7%
Cows (04) (c/kg)	269.7	268.3	331.4	0.5%	-18.6%

Live Weight Prices	W/C	W/C	Same week 2017	% change previous week	% change 2018
	01/04/19	25/03/19	02/04/18		
Yearlings (Male) (Aged 365 - 730 days) - (€/100Kg)	189	191	210	-1.0%	-10.0%
Yearlings (Female) (Aged 365 - 730 days) - (€/100Kg)	199	197	213	1.0%	-6.6%
Young Stores (Male & Female) (Aged 180 - 364 days) - (€/100Kg)	218	217	237	0.5%	-8.0%
Bull Calf (€/head) Dairy	103.2	84.9	118.9	21.6%	-13.2%
Bull Calf (€/head) Beef	163.1	158.7	197.9	2.7%	-17.6%
Bull Calf (€/head) Average	133.2	121.8	158.4	9.3%	-15.9%

Slaughter Figures	% of weekly figures	W/C	Same week 2018	Year to Date		Change 2019 v 2018	
		01-Apr-19		2019	2018	Head	%
Steers	33.5%	11,880	11,757	158,457	156,266	2,191	1.4%
Cows	18.8%	6,658	7,689	98,151	95,090	3,061	3.2%
Heifers	30.9%	10,981	9,334	152,073	135,398	16,675	12.3%
Young Bulls	13.6%	4,823	3,058	77,977	66,001	11,976	18.1%
Mature Bulls	3.2%	1,152	676	8,156	7,664	492	6.4%
<b>Total</b>	<b>100%</b>	<b>35,494</b>	<b>32,514</b>	<b>494,814</b>	<b>460,419</b>	<b>34,395</b>	<b>7.5%</b>

Live Exports	W/C	Same week	W/C	Year to Date		Change 2019 v 2018	
	25-Mar-19	2018	18-Mar-19	2019	2018	Head	%
Northern Ireland	909	247	757	7,797	3,826	3,971	104%
EU Except NI	15,573	11,028	16,971	97,141	70,908	26,233	37%
Third Countries	1,872	0	0	2,075	4,492	-2,417	-
<b>Total</b>	<b>18,354</b>	<b>11,275</b>	<b>17,728</b>	<b>107,013</b>	<b>79,226</b>	<b>27,787</b>	<b>35%</b>

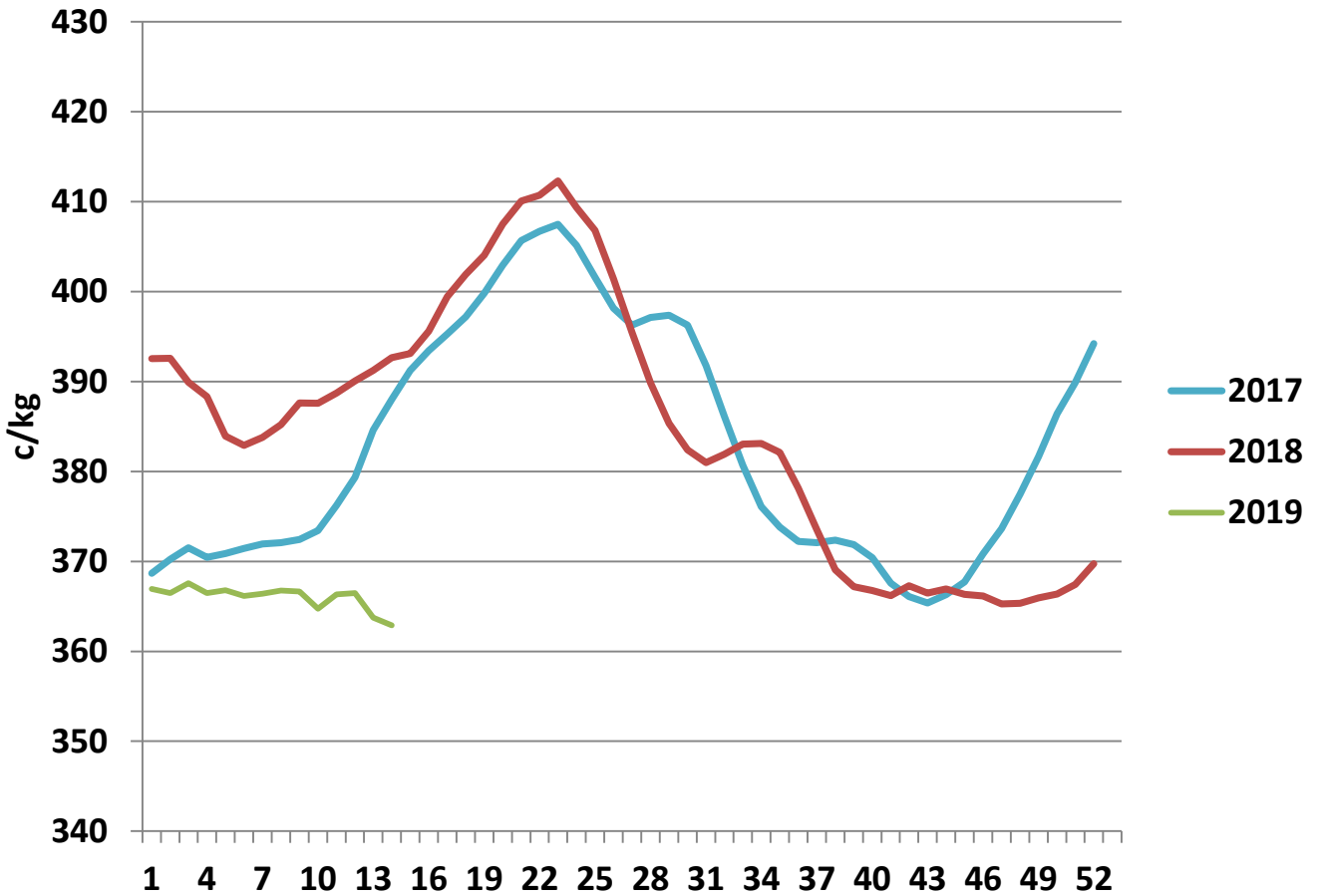
## Irish Deadweight Cattle Prices vs Selected Other Markets, 2019



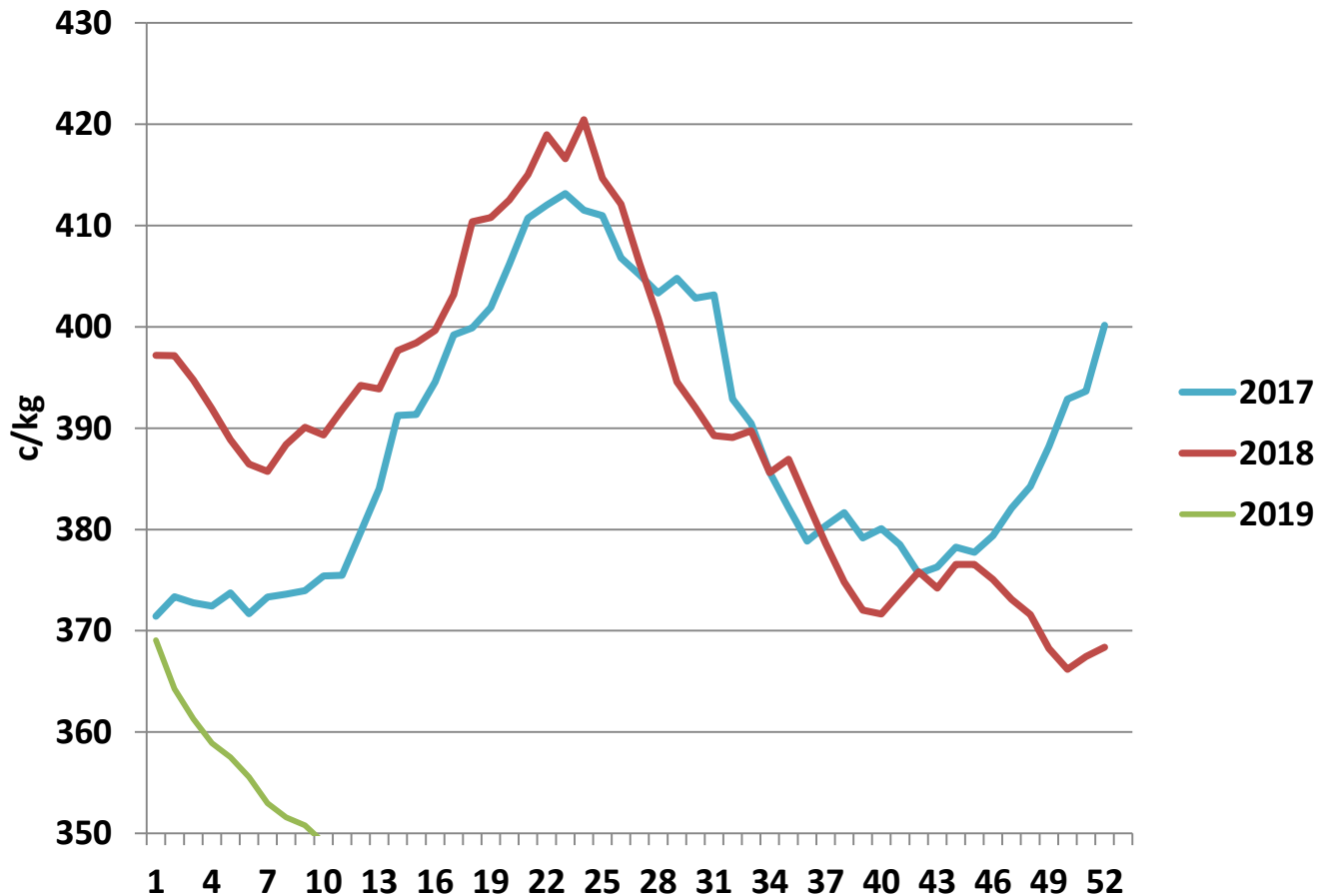
### Livestock Pricing

	Ireland	NI	Britain	EU 15 Average	France	Germany
<b>W/C 25/03/19</b>	<b>364.3</b>	<b>392.47</b>	<b>397.87</b>	<b>377</b>	<b>383</b>	<b>369.3</b>

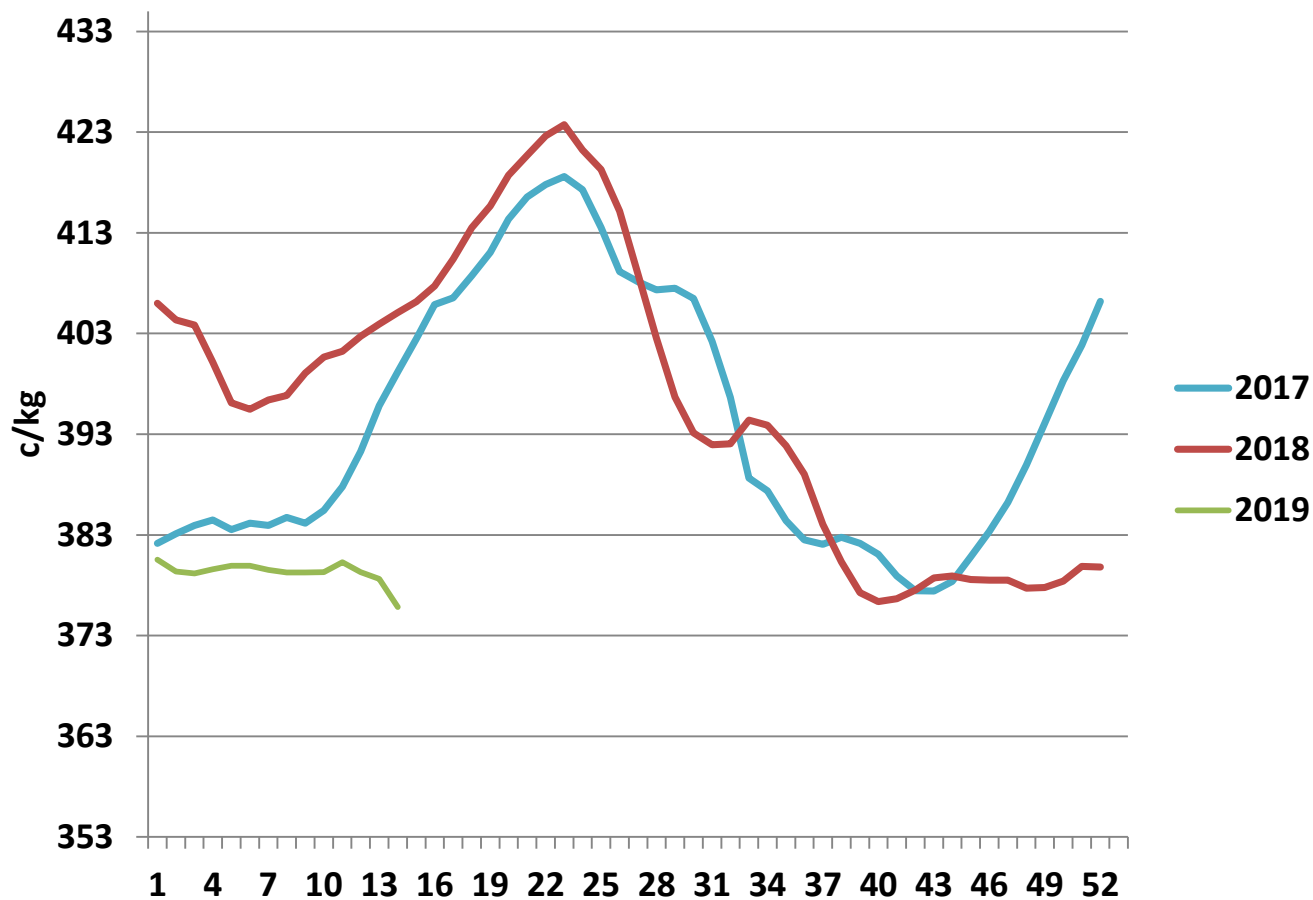
### R3 Steer prices ex. VAT



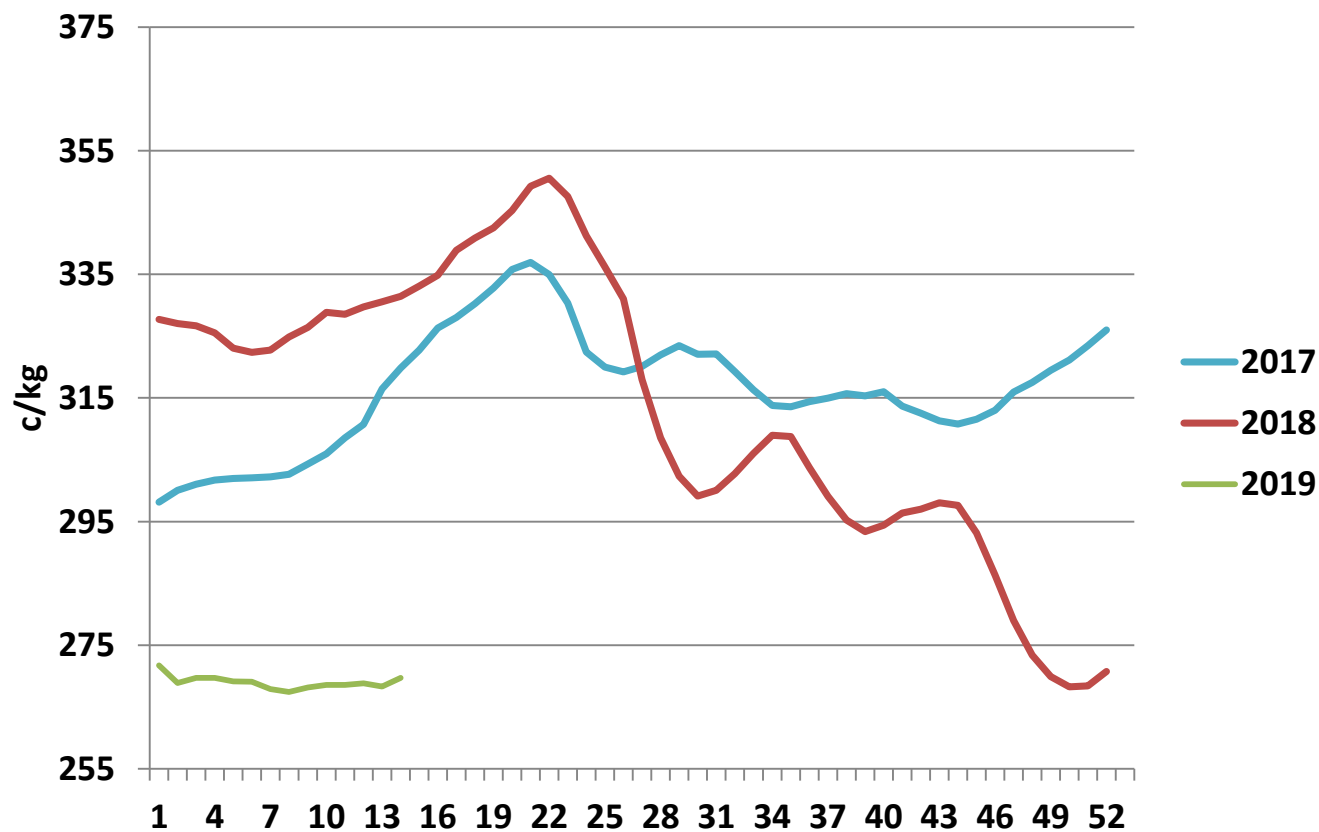
### U3 Young Bull prices ex. VAT

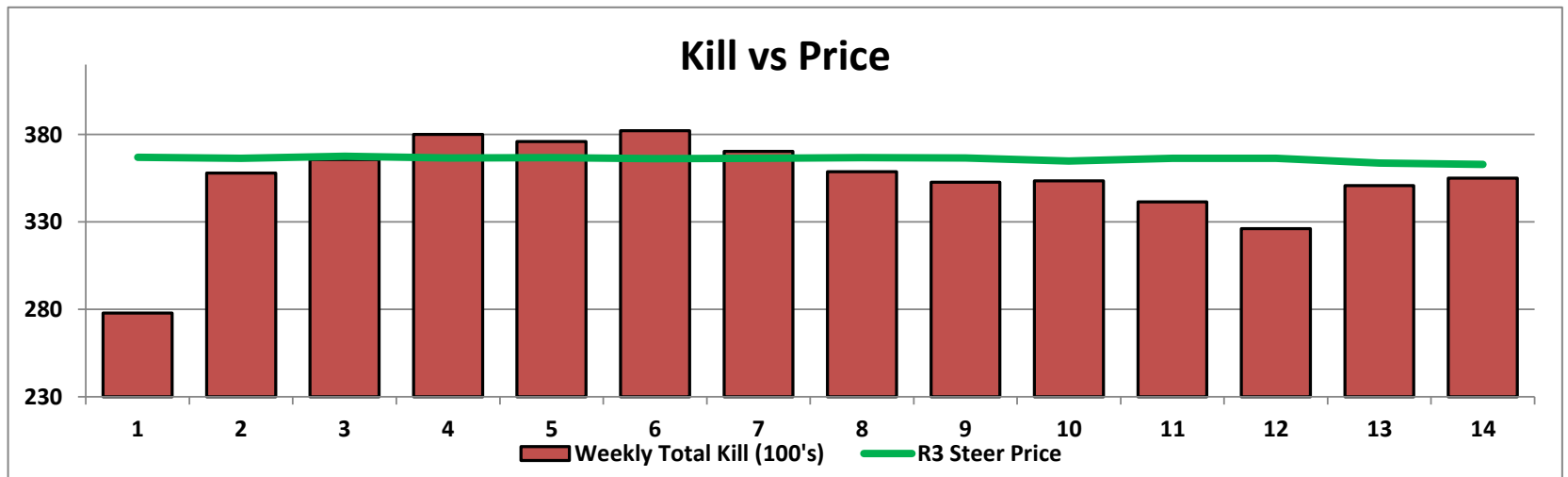
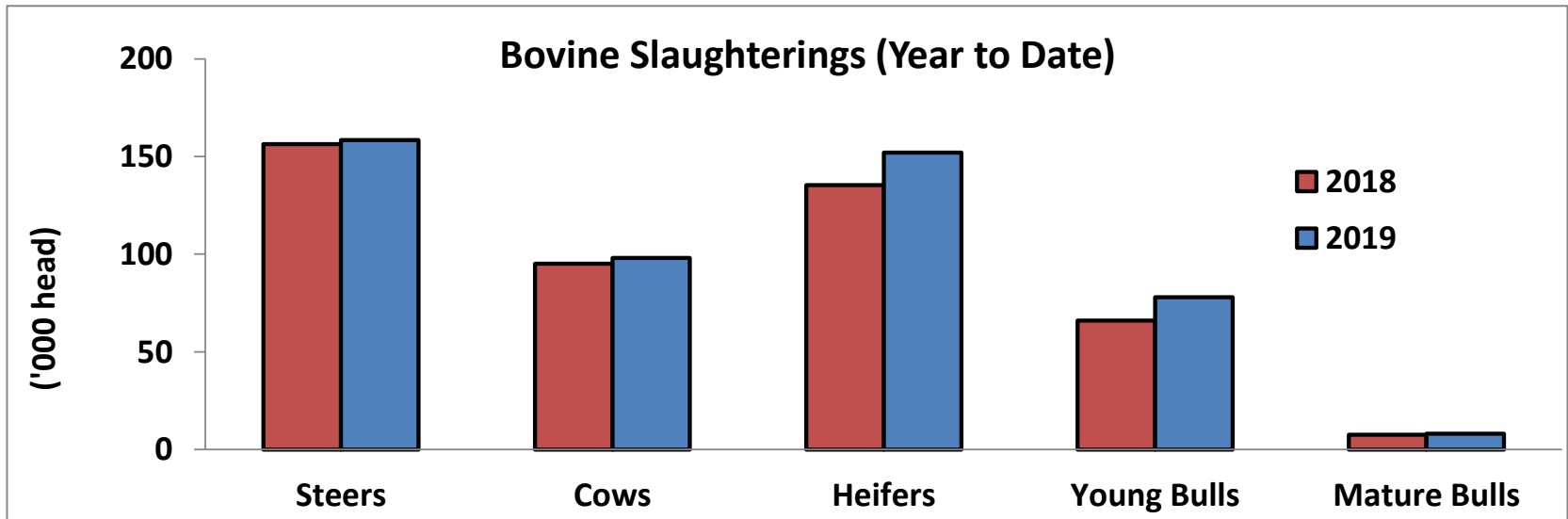
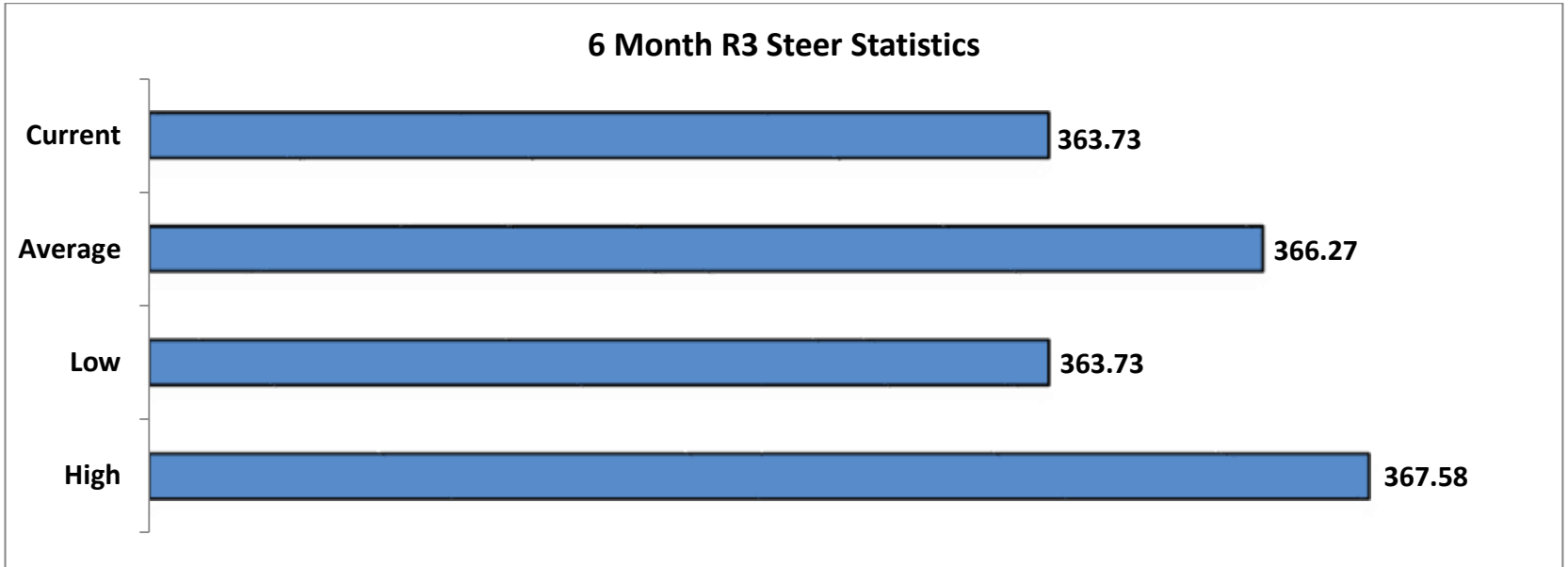


### R3 Heifer prices ex. VAT

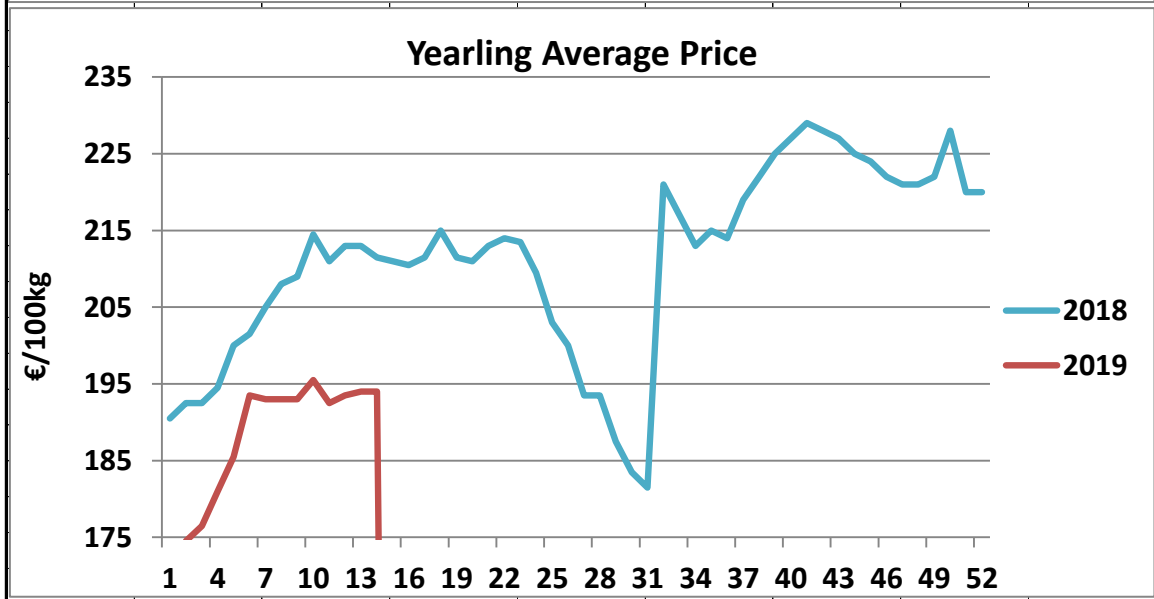
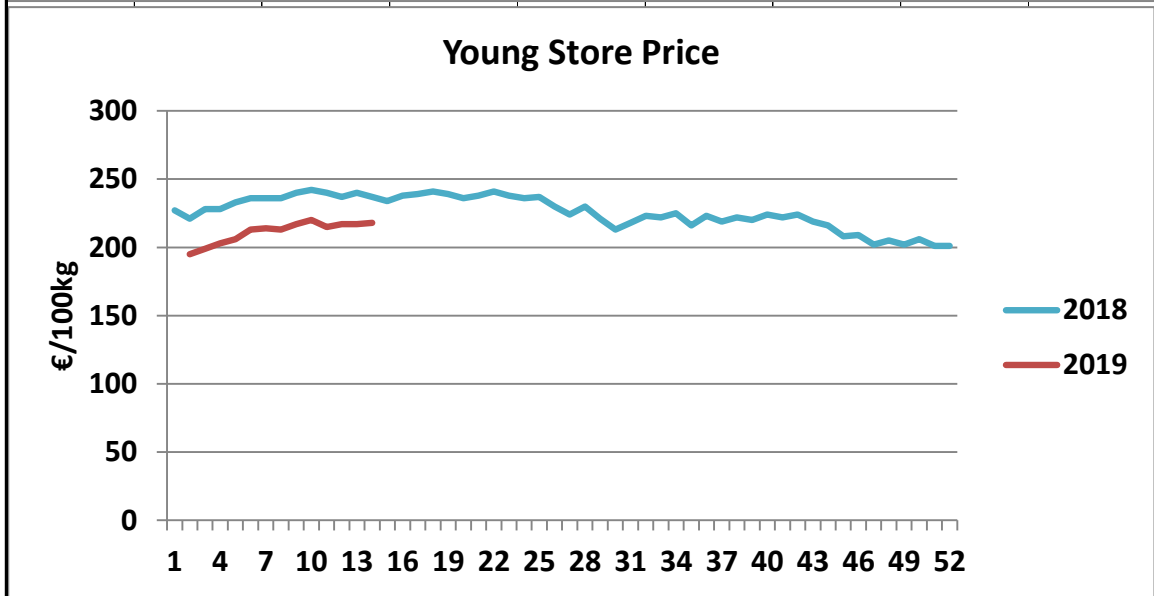
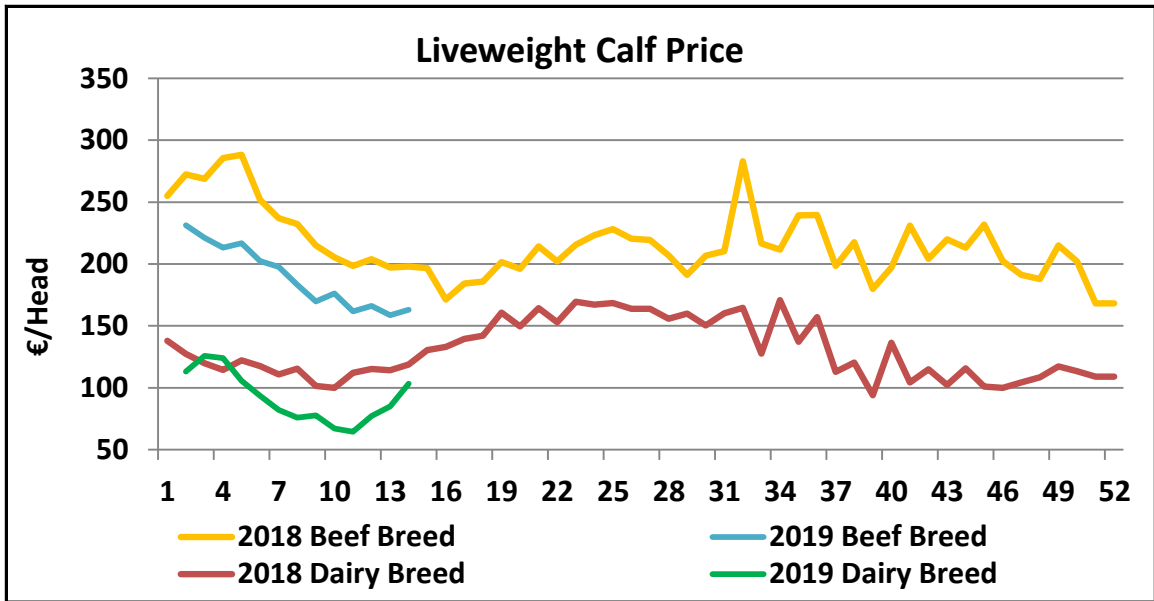


### O4 Cow prices ex. VAT

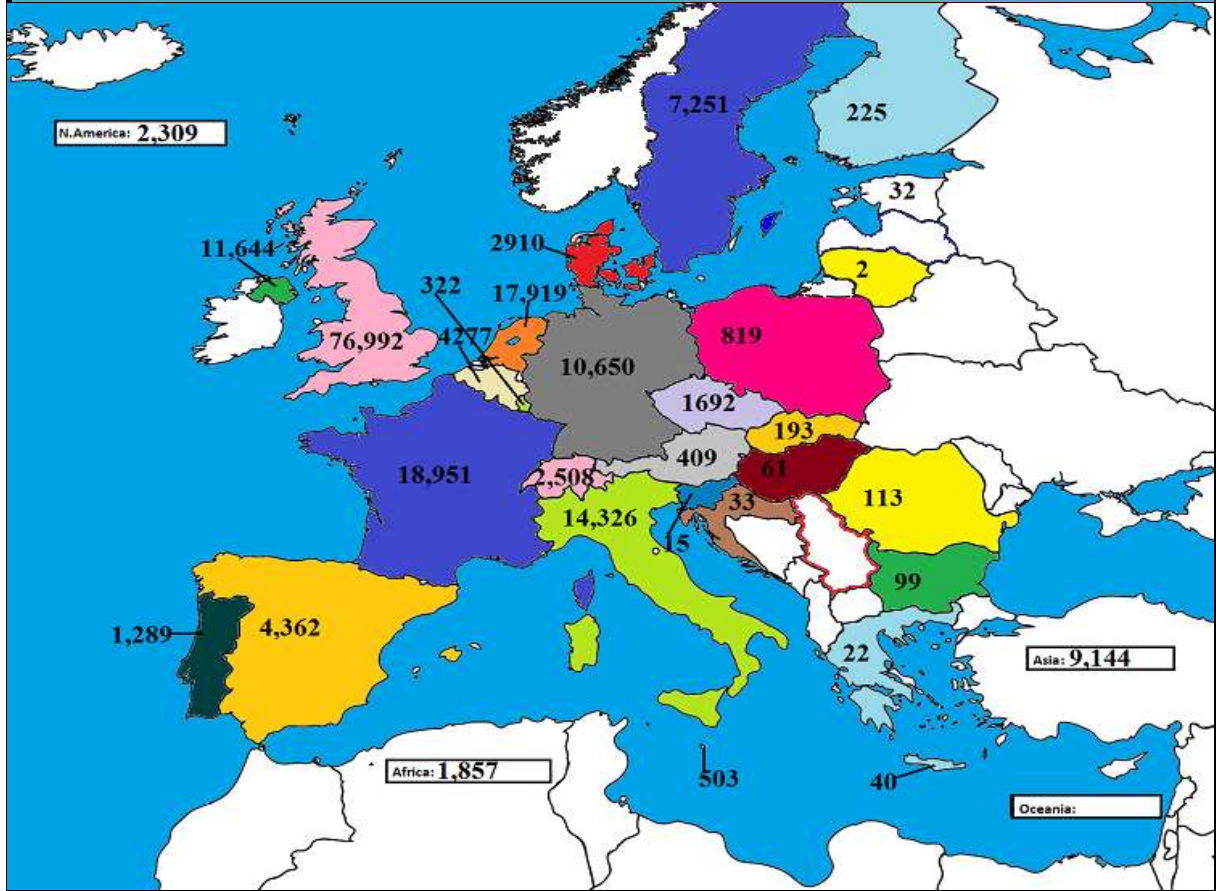




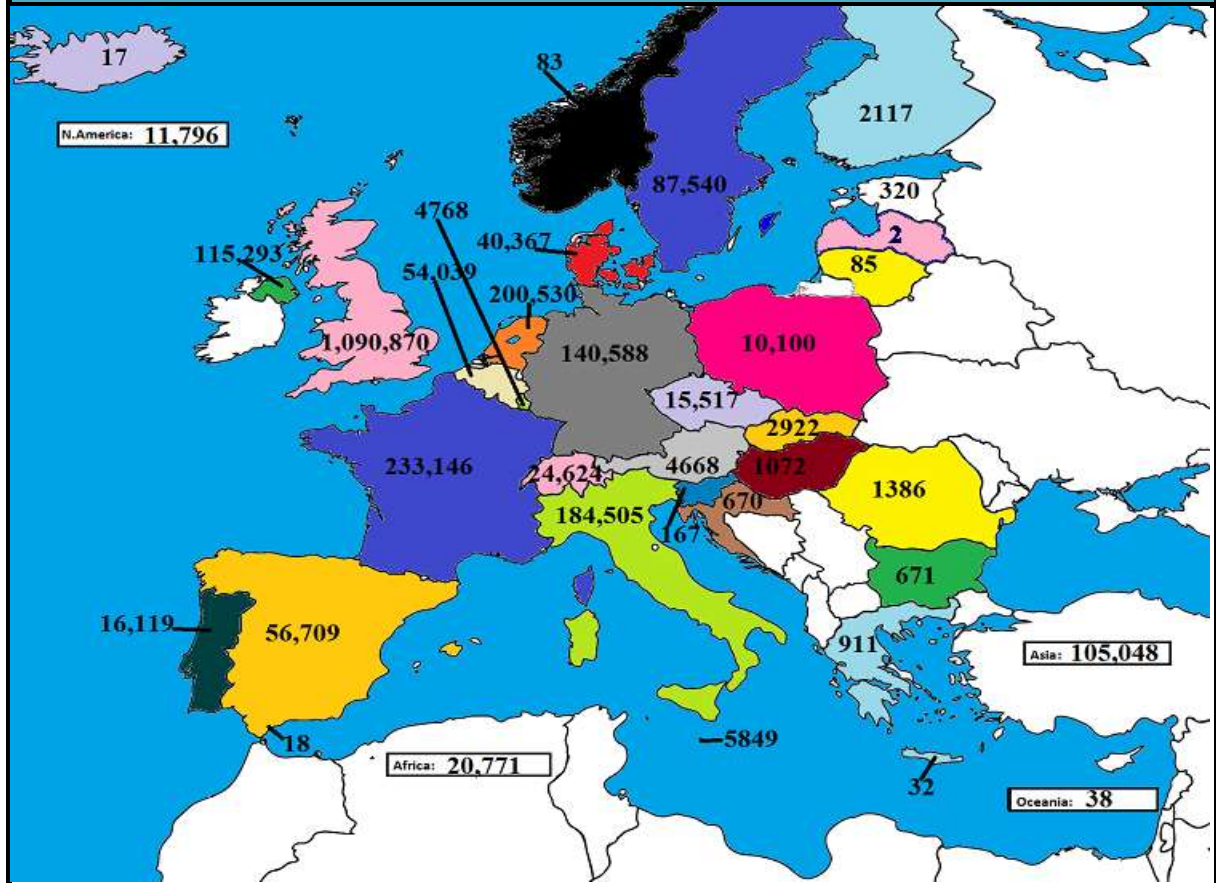




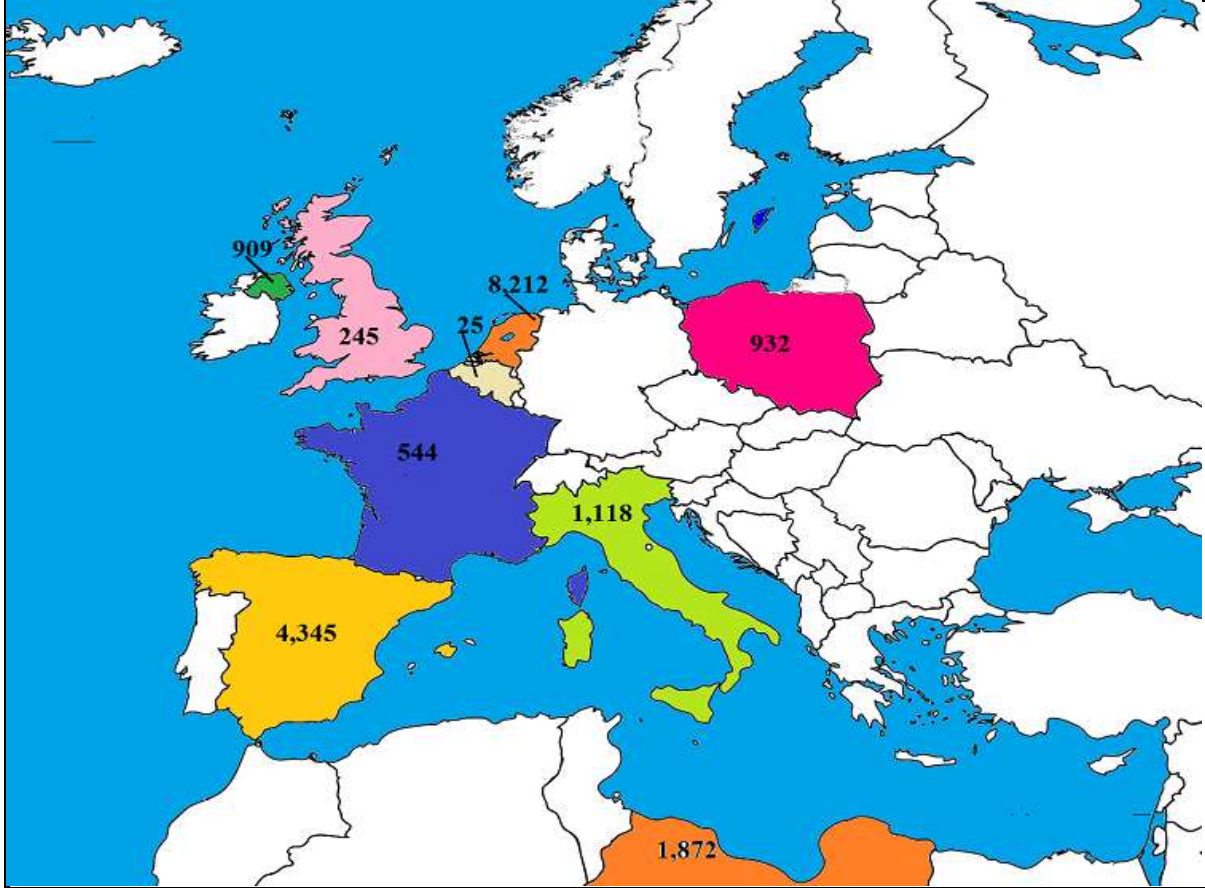
January 2019 Beef exports, €000 (CSO figures)



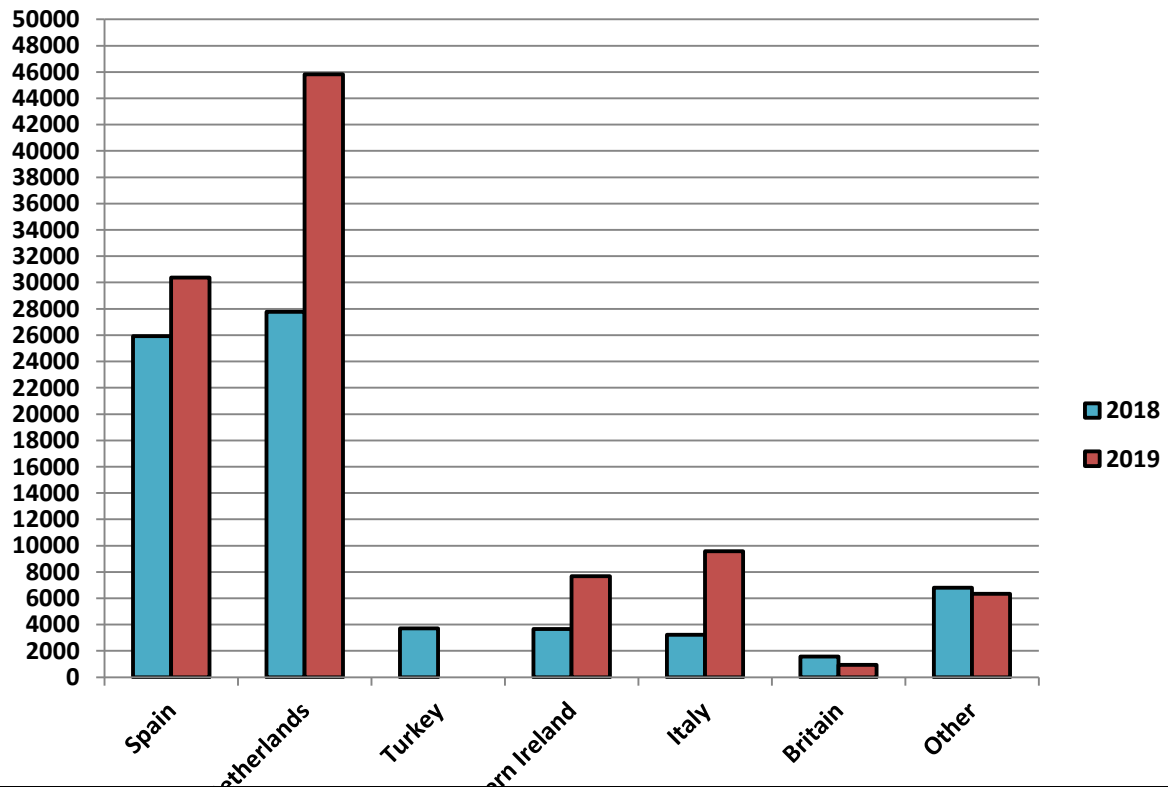
Cumulative beef exports to Dec 2018, €000 (CSO figures)

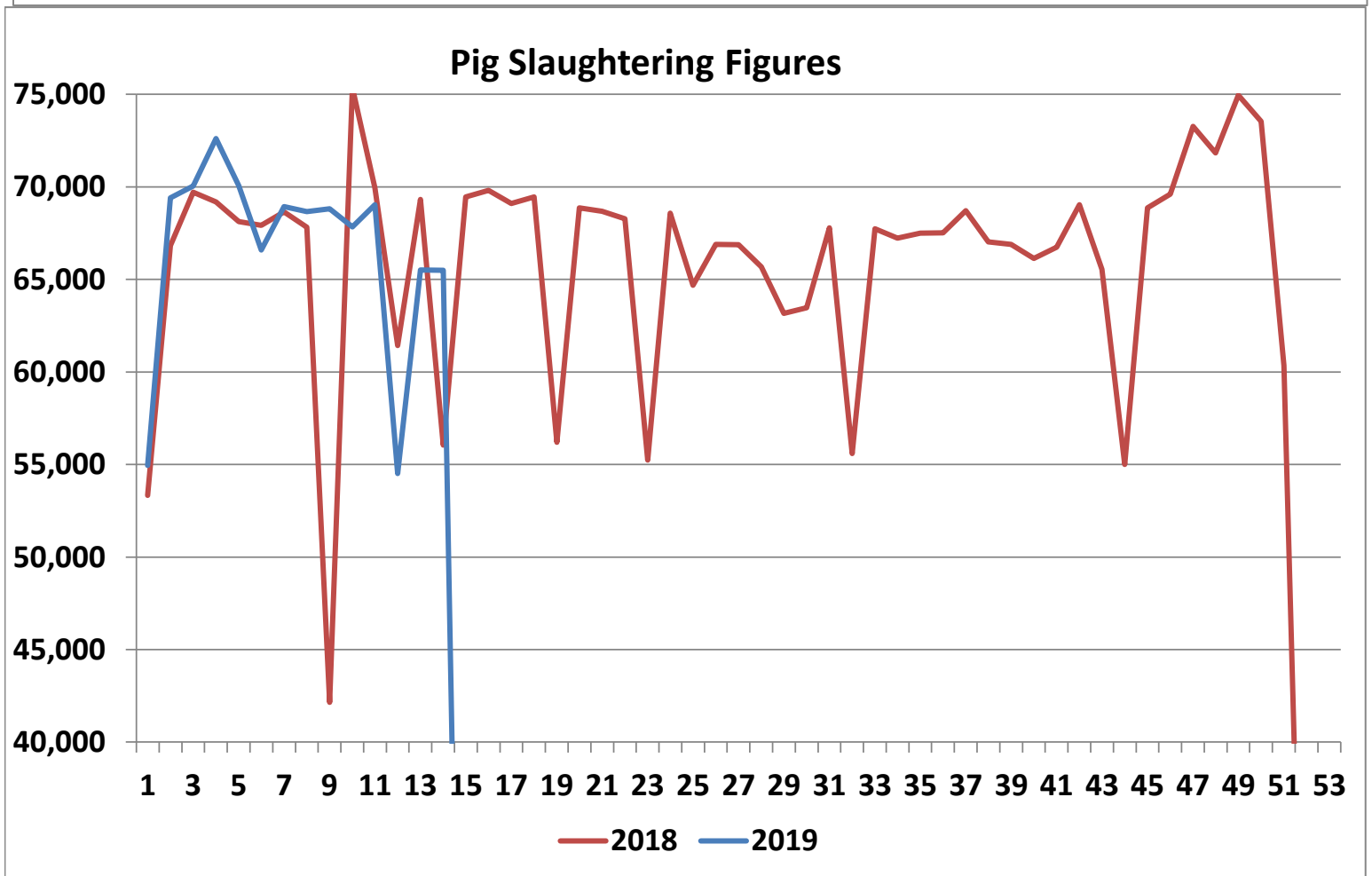
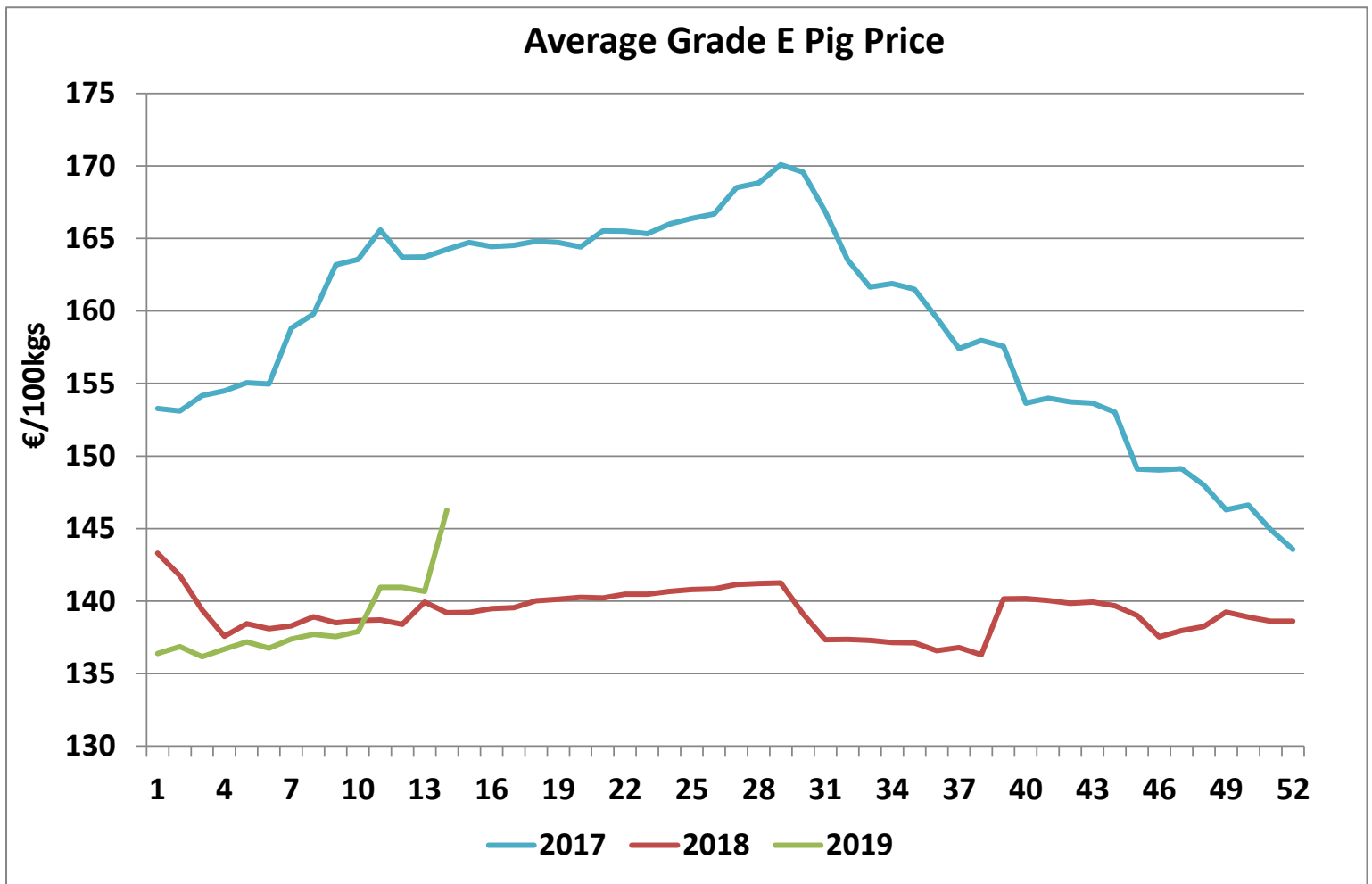


Cattle exported, w/c 25/03/19



Cumulative cattle export figures, 2019





**Sheepmeat Information Week 14 01/04/2019 - 07/04/2019**

Irish Prices €/100 kg	2019	2018	Change
Ave Factory Price	526.01	567.25	-7.3%
Ave Mart Price	457.35	456.74	0.1%
National Ave Price	505.41	534.1	-5.4%
YTD Ave	481.87	486.85	-1.0%

Slaughterings	2019	2018	Change
Weekly	48,668	43,308	12%
YTD	610,561	708,022	-14%

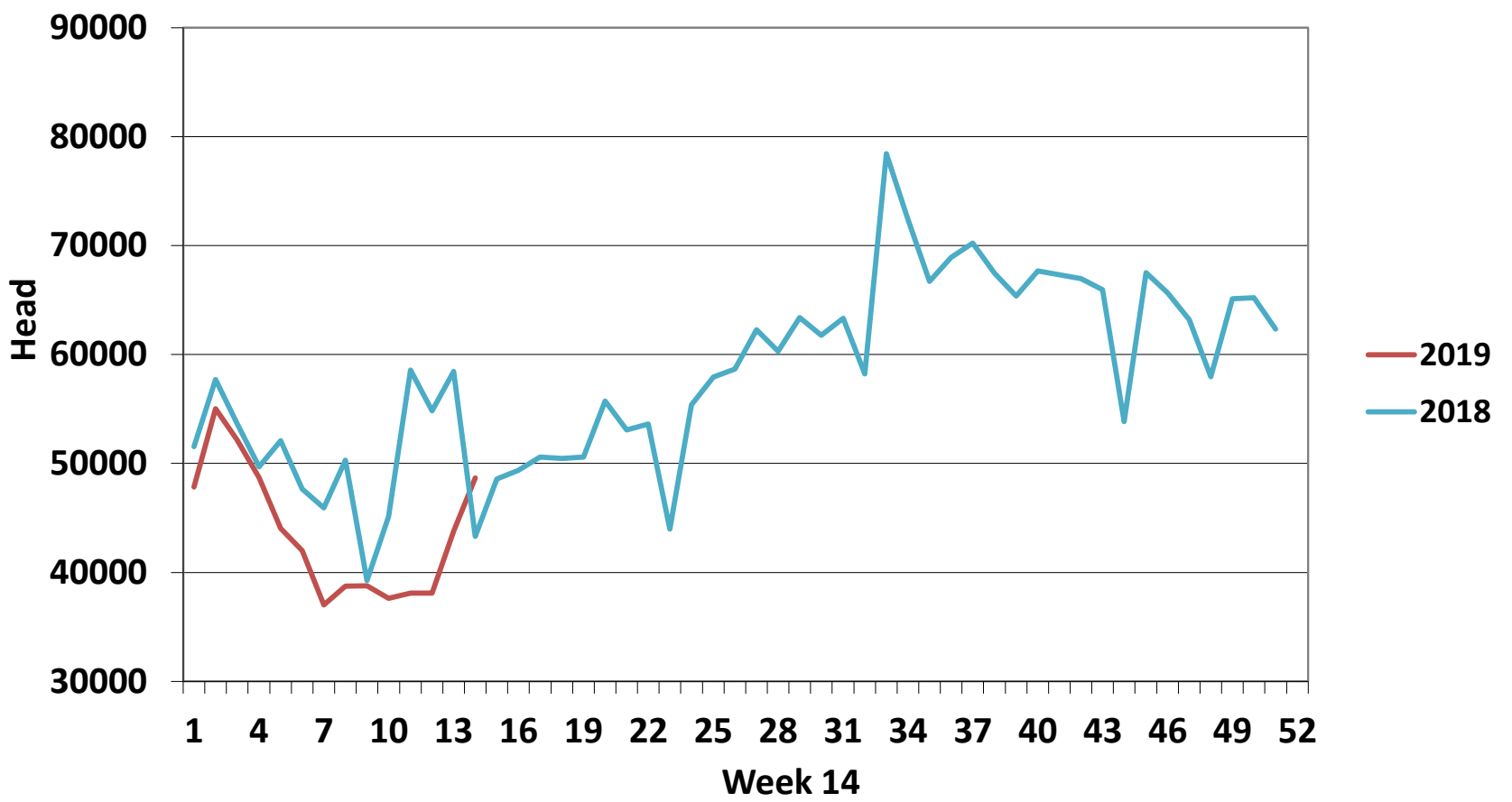
EU Market Rates Heavy Lambs	€/100kg
Belgium	536.3
Denmark	467.0
Germany	550.7
Spain	537.8
France	639.0
Croatia	569.9
Ireland	505.4
Italy	540.0
Cyprus	472.0
Latvia	400.9
Lithuania	315.2
Netherlands	532.3
Austria	570.0
Poland	453.5
Romania	212.2
Finland	361.8
Sweden	528.3
Northern Ireland	523.0
Great Britain	532.1
United Kingdom	531.4
Community	540.8

**REPORT ON SLAUGHTERING AT SHEEP EXPORT PREMISES  
WEEK 14**

CATEGORY	2019		2018		DIFFERENCE	
	Weekly	Cumulative	Weekly	Cumulative	Weekly	Cumulative
Lambs/Hoggets	42,069	498,190	34,630	595,861	7439	- 97,671
Spring Lambs	957	14,202	575	4,684	382	9,518
Ewes and Rams	5,642	98,166	8,103	107,439	-2,461	- 9,273
Light Lambs	-	3	-	38	0	- 35
<b>TOTAL</b>	<b>48,668</b>	<b>610,561</b>	<b>43,308</b>	<b>708,022</b>	<b>5,360</b>	<b>-97,461</b>



### Weekly Sheep Slaughtering



### Ave. Price €/100 kg for Sheepmeat

