

Meat Market Report

03/06/19 - 09/06/19

Week

23



**An Roinn Talmhaíochta,
Bia agus Mara**
Department of Agriculture,
Food and the Marine

MARKET SUMMARY

Beef

Deadweight Prices c/100Kg (Including VAT)

	U3	U4	R3	R4	O3	O4	P+
Steers	416.6	412.7	405.2	404.8	388.0	392.2	362.4
Heifers	433.3	430.6	419.1	417.3	400.9	399.8	364.4
Young Bulls	403.2	400.3	392.1	396.0	368.5	367.7	350.5
Cows			341.4	339.4	317.8	318.8	308.9

Liveweight Prices

*Bull Calf Average Price	€174.8 per head (Excluding VAT)
**Young Store Average Price	€224.0 per 100kg (Excluding VAT)
***Yearling (male & female) Price	€202.5 per 100kg (Excluding VAT)

* Aged 8-28 days ** Aged 180-364 days, Male & Female ***age 365-730 days

Slaughterings

31,772 cattle slaughtered this week, of which steers were 9,305 (29%), heifers 9,140 (29%), young bulls 4,785 (15%) and cows 7,584 (24%). Total YTD slaughter is 786,917 compared to 747,682 in 2018, a 5% increase.

Live Trade

6,518 cattle were exported in the week commencing 27/05/2019*; 5,868 to EU (Except NI). Live exports for 2019 amount to 209,642 compared to 160,534 in 2018, up 31% on 2018 levels.

*This data is provisional and subject to revision.

The next meeting of the Management Committee for the Common Organisation of Agricultural Markets (Animal Products Sector) is 23rd May 2019

CONTENTS:

Page 2: Market Summary Beef
 Page 3: Market Summary Other Meats
 Page 4: Beef Price and Slaughter Summary
 Page 5: Comparative Beef Prices
 Page 6: Steer and Young Bull Price
 Page 7: Heifer and Cow Graphs
 Page 8: Price and Slaughter Graphs
 Page 9: Liveweight Beef Graphs

Page 10: Beef Export Maps
 Page 11: Beef Export Info
 Page 12: Pig price and slaughter graphs
 Page 13: Sheep prices and slaughter
 Page 15: Sheep price and slaughter graphs

MARKET SUMMARY

Pigmeat

Grade E Pig
Prices (Ex.
VAT)

The Grade E Pig price for week commencing 03/06/2019 was €170.87 per 100Kg compared to €140.47 in the same week last year, which represents a 22% increase.

Slaughtering

54,000 pigs were slaughtered in week 23 of which 1,457 were sows. The cumulative figure for pig slaughterings in 2019 is 1,492,058 which is a 1% decrease with the same point last year.

Sheepmeat

Sheepmeat
Prices (Ex.
VAT)

The national average price for the week commencing 03/06/2019 was €493.73 per 100Kg, a decrease of 7% over the same week last year.

Slaughtering

43,299 sheep were slaughtered at sheep export premises the week commencing 03/06/2019, compared to 43,965 in the same week of 2018. Sheep slaughterings for 2019 are 7% down on 2018 at 1,082,670 head.

Live Trade

Total live exports to European Countries stood at 20,769 head to the end of 2018.

Poultry

Slaughtering

Cumulative poultry slaughterings for 2019* stand at 45,002,472 birds at the end of week 22, up 9% compared to the same period last year.

*Latest Figures are provisional and subject to change

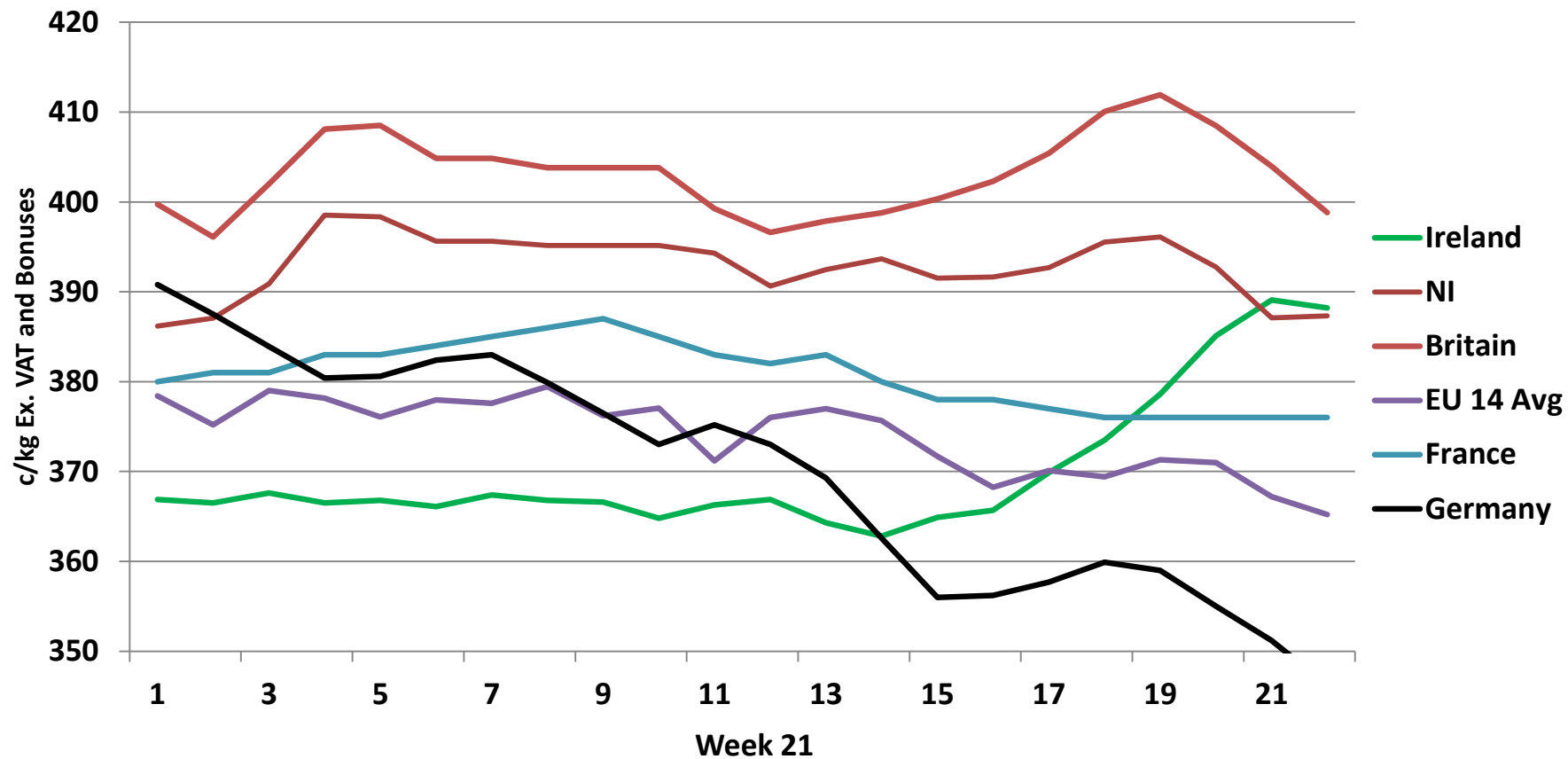
Dead Weight Prices	W/C	W/C	Same week 2018	% change prev week	% change 2018
	03/06/19	27/05/19	04/06/18		
Steers (R3) (c/kg)	384.7	387.7	412.3	-0.8%	-6.7%
Heifers (R3) (c/kg)	397.6	399.4	423.7	-0.5%	-6.2%
Young Bulls (U3) (c/kg)	382.7	385.8	416.6	-0.8%	-8.1%
Cows (04) (c/kg)	302.2	307.6	347.6	-1.8%	-13.1%

Live Weight Prices	W/C	W/C	Same week 2018	% change previous week	% change 2018
	03/06/19	27/05/19	04/06/18		
Yearlings (Male) (Aged 365 - 730 days) - (€/100Kg)	197	199	211	-1.0%	-6.6%
Yearlings (Female) (Aged 365 - 730 days) - (€/100Kg)	208	205	216	1.5%	-3.7%
Young Stores (Male & Female) (Aged 180 - 364 days) - (€/100Kg)	224	223	238	0.4%	-5.9%
Bull Calf (€/head) Dairy	150.0	141.8	169.4	5.8%	-11.5%
Bull Calf (€/head) Beef	199.7	183.4	215.7	8.9%	-7.4%
Bull Calf (€/head) Average	174.8	162.6	192.5	7.5%	-9.2%

Slaughter Figures	% of weekly figures	W/C	Same week 2018	Year to Date		Change 2019 v 2018	
		03-Jun-19		2019	2018	Head	%
Steers	29.3%	9,305	10,581	253,968	258,814	-4,846	-1.9%
Cows	23.9%	7,584	7,869	160,717	160,452	265	0.2%
Heifers	28.8%	9,140	7,979	238,779	214,463	24,316	11.3%
Young Bulls	15.1%	4,785	4,925	115,604	100,022	15,582	15.6%
Mature Bulls	3.0%	958	589	17,849	13,931	3,918	28.1%
Total	100%	31,772	31,943	786,917	747,682	39,235	5.2%

Live Exports	W/C	Same week	W/C	Year to Date		Change 2019 v 2018	
	27-May-19	2018	20-May-19	2019	2018	Head	%
Northern Ireland	650	385	616	15,615	7,859	7,756	99%
EU Except NI	5,868	5,499	7,034	186,293	143,755	42,538	30%
Third Countries	0	0	0	7,734	8,920	-1,186	-
Total	6,518	5,884	7,650	209,642	160,534	49,108	31%
Calves YTD:		173,665		Adult YTD:Cattle		35,848	

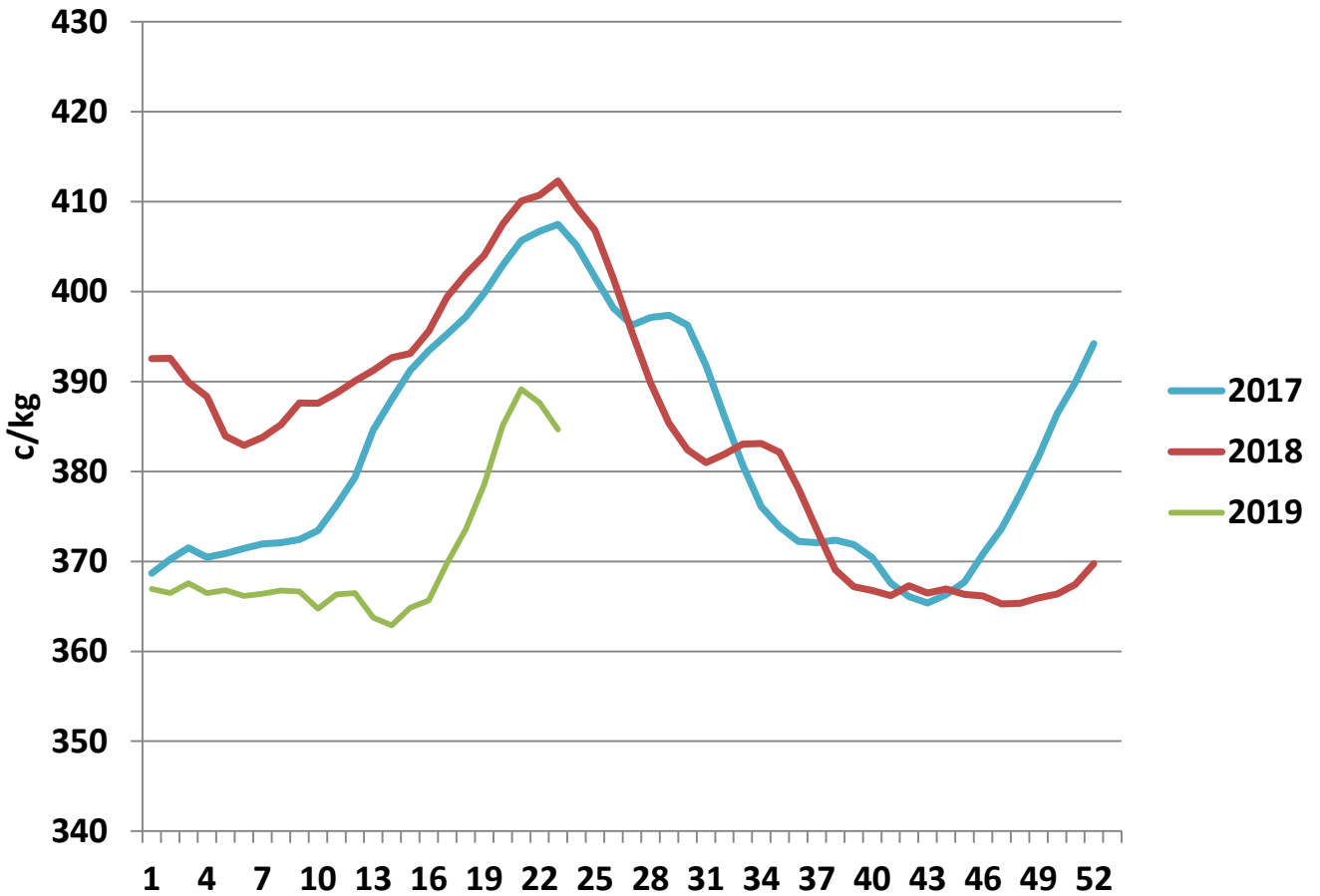
Irish Deadweight Cattle Prices vs Selected Other Markets, 2019



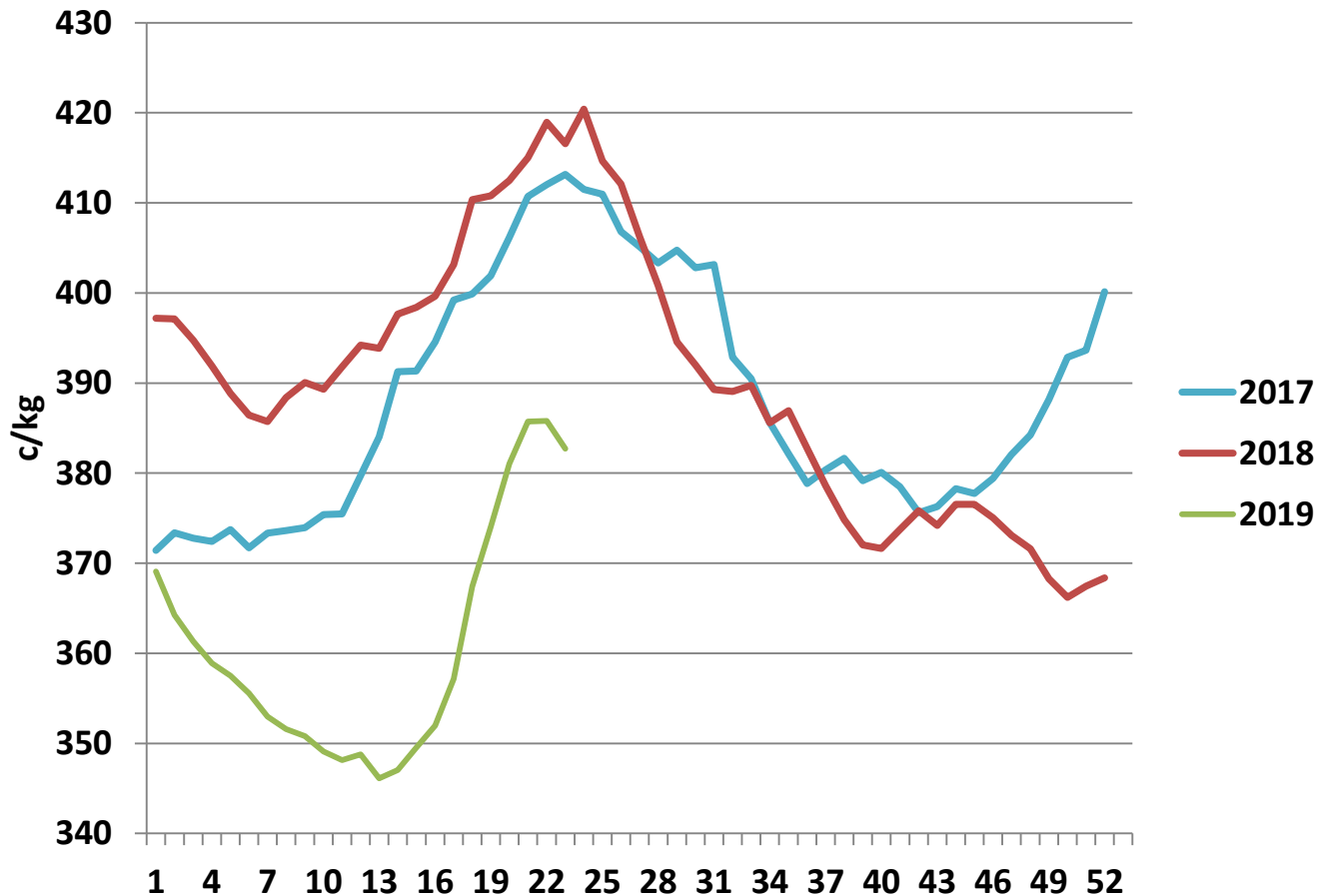
Livestock Pricing

	Ireland	NI	Britain	EU 14 Average	France	Germany
W/C 27/05/19	388.2	387.32	398.83	365.21	376	346.2

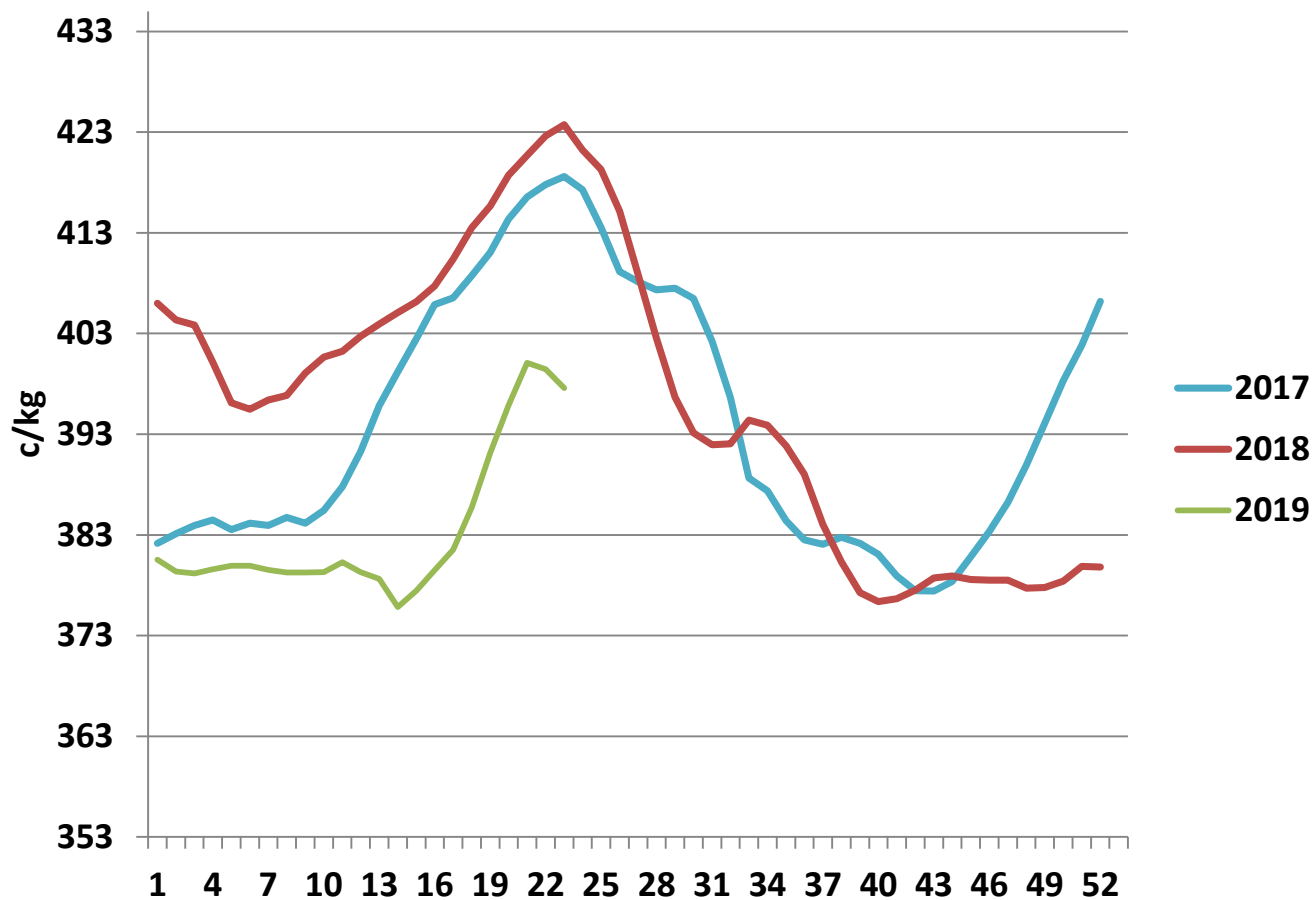
R3 Steer prices ex. VAT



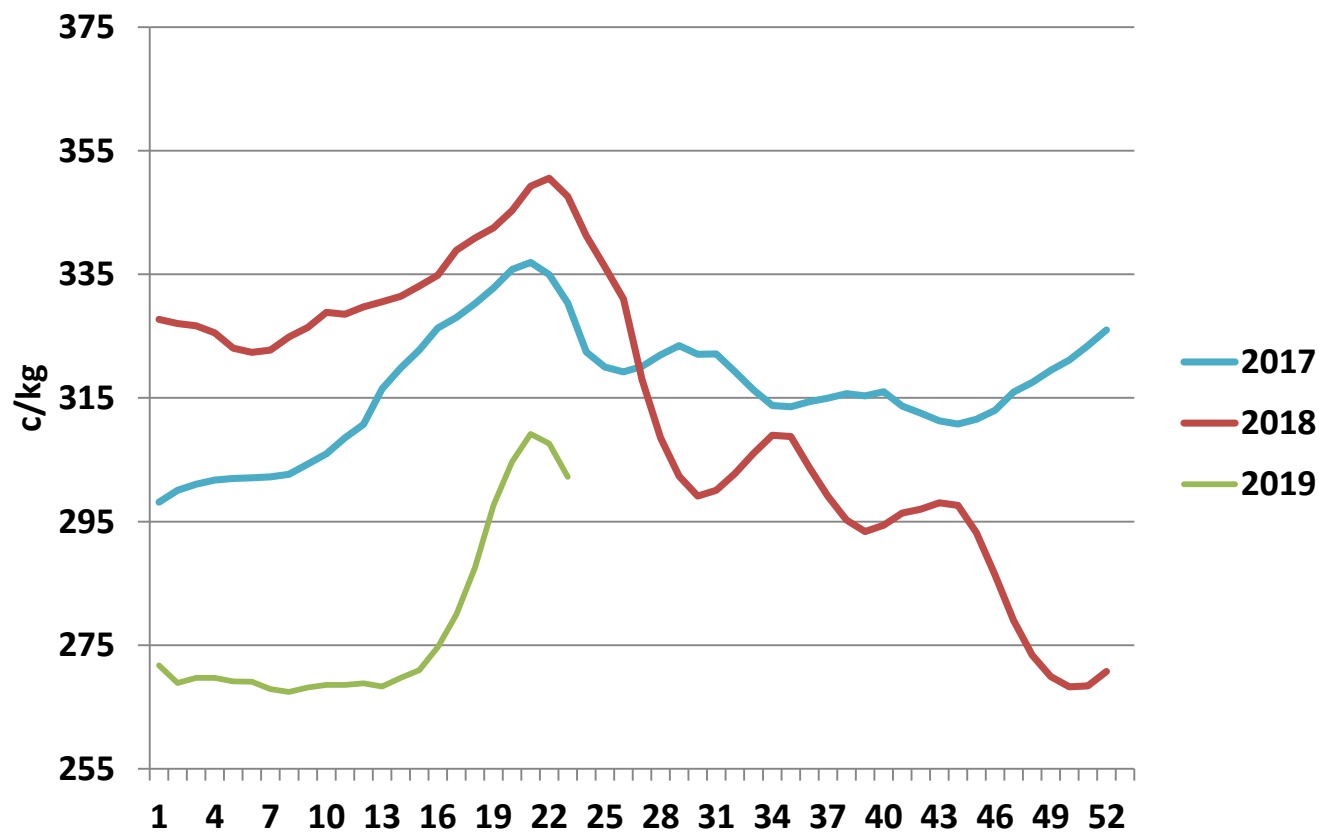
U3 Young Bull prices ex. VAT

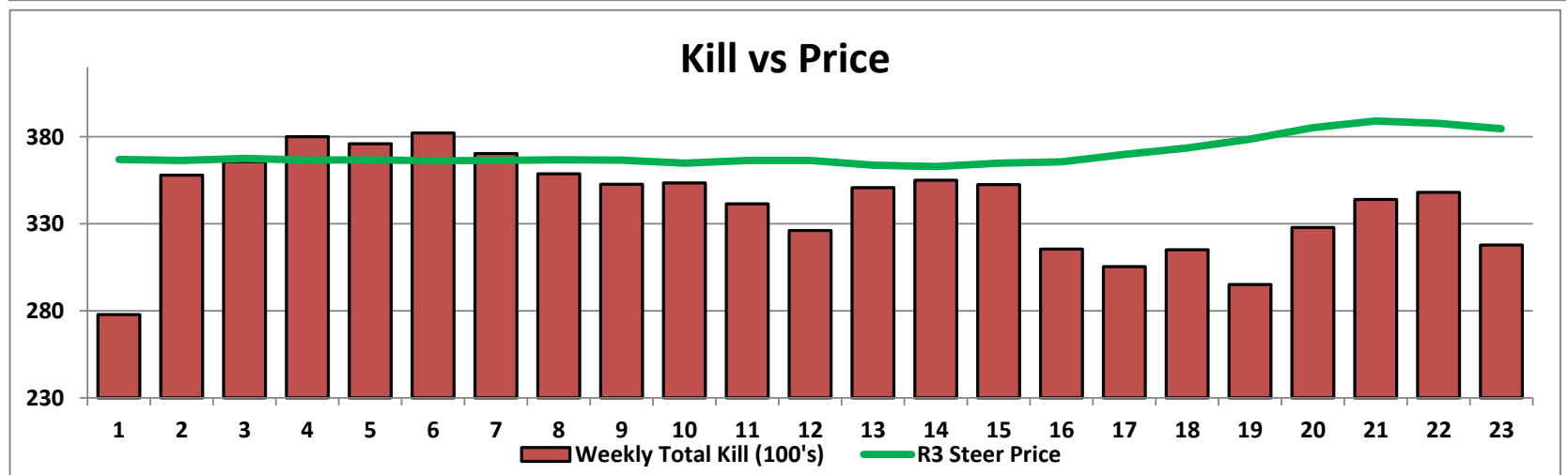
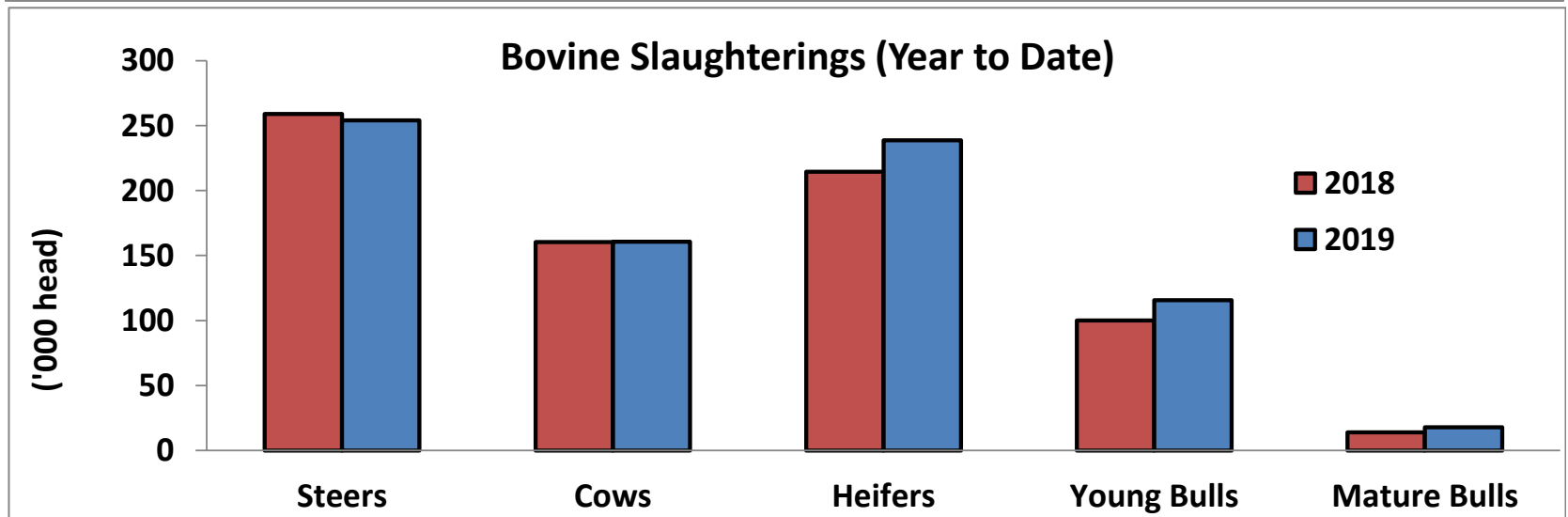
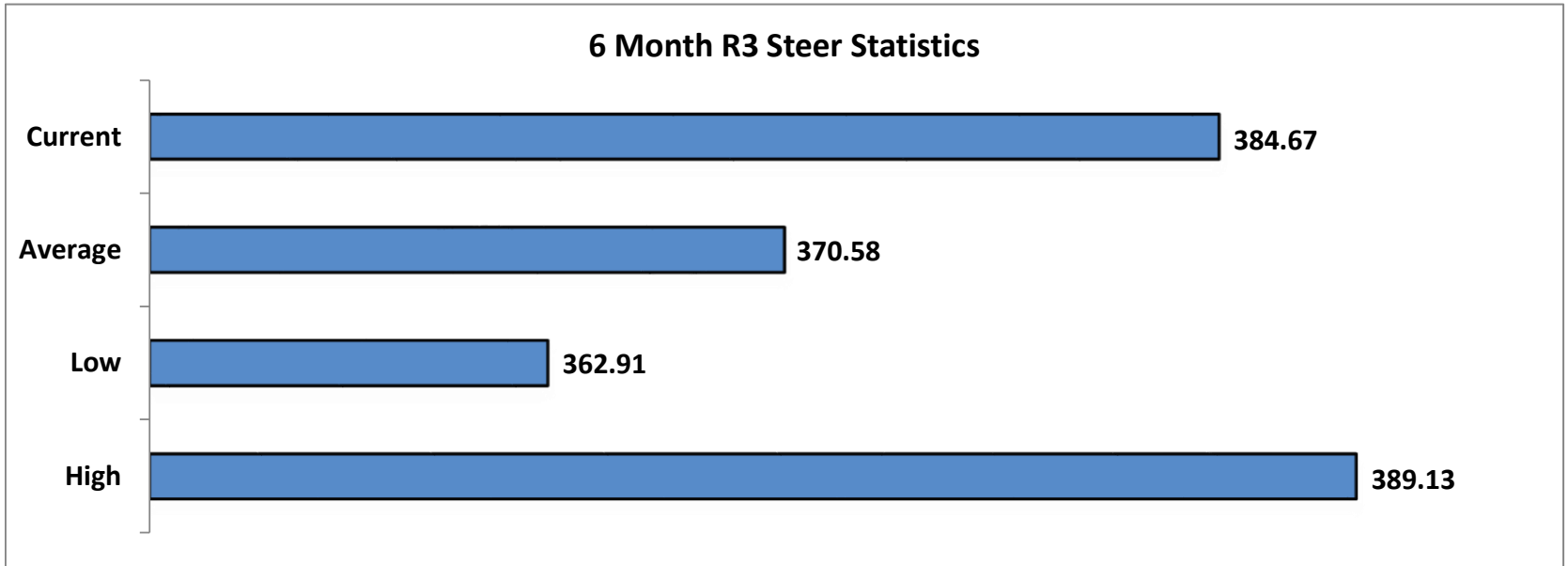


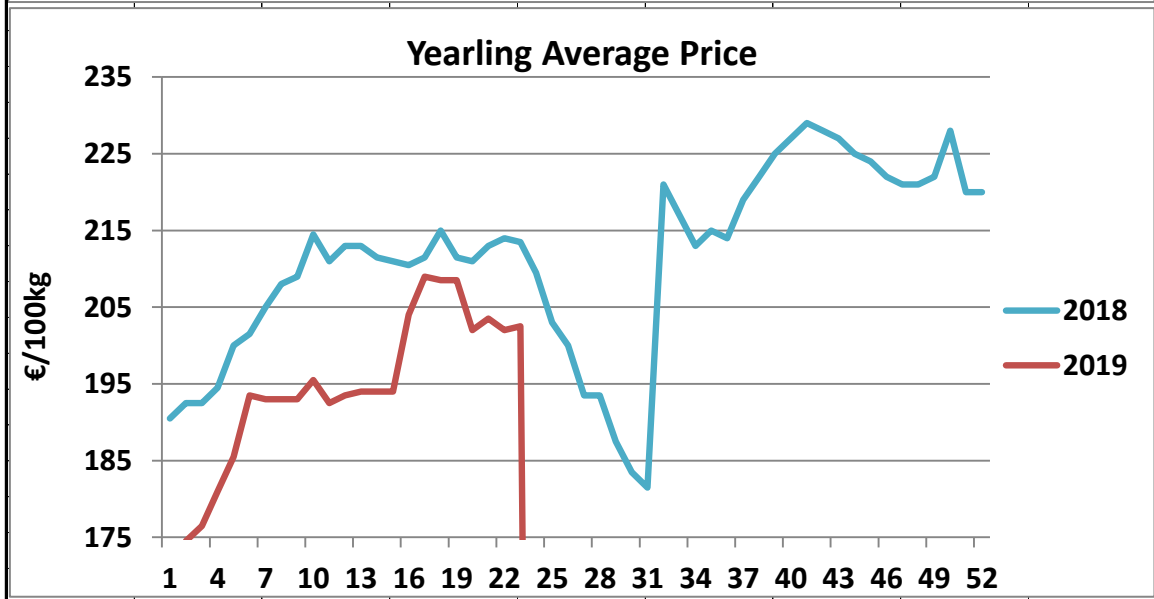
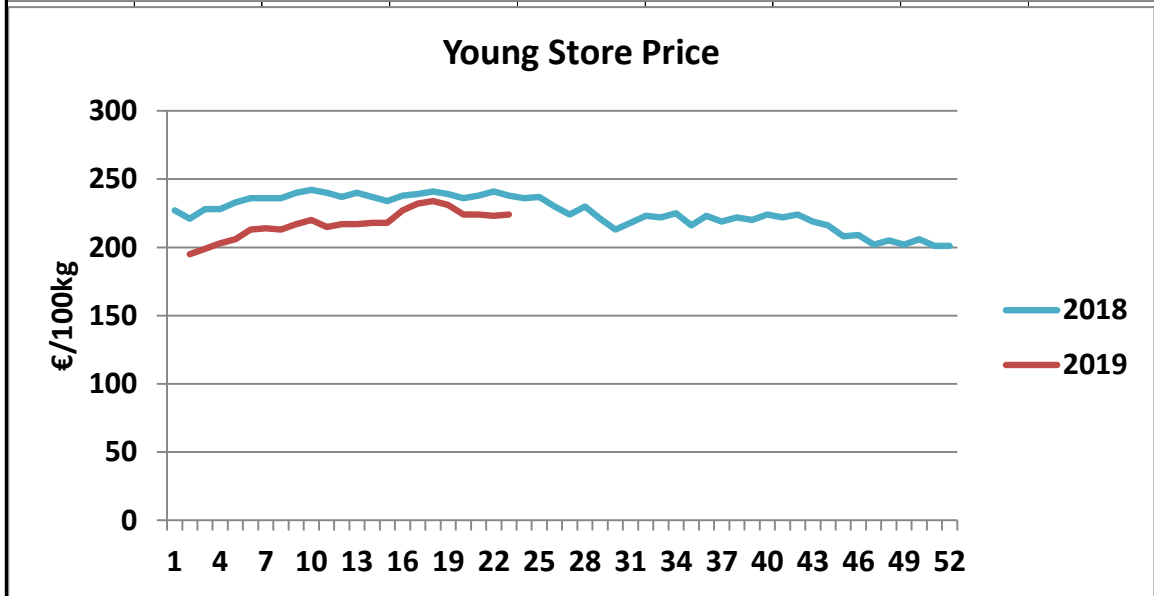
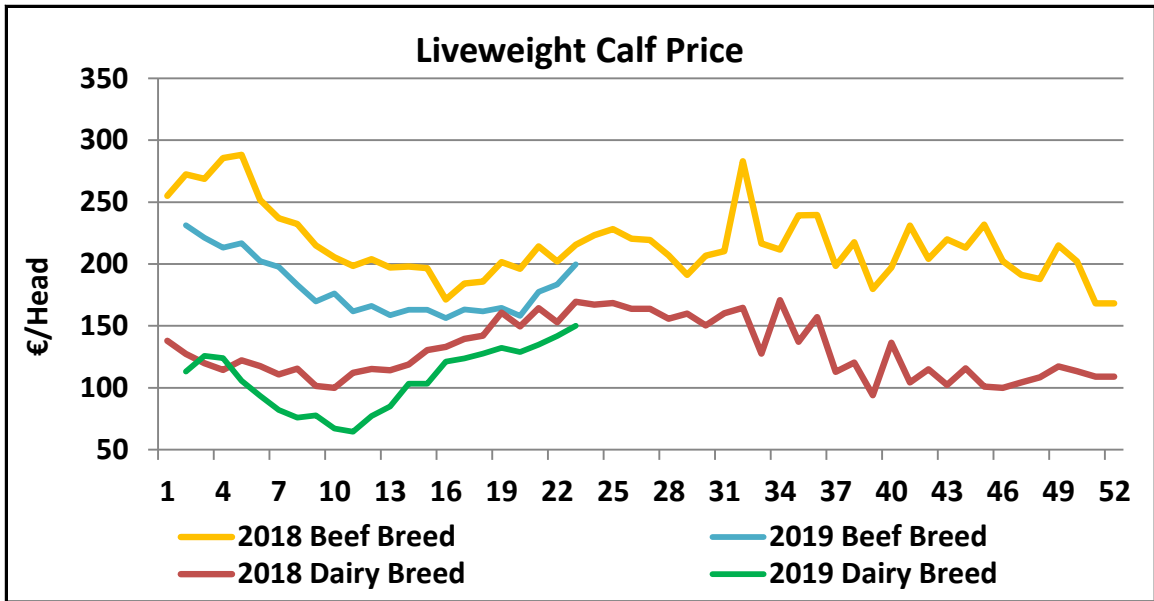
R3 Heifer prices ex. VAT



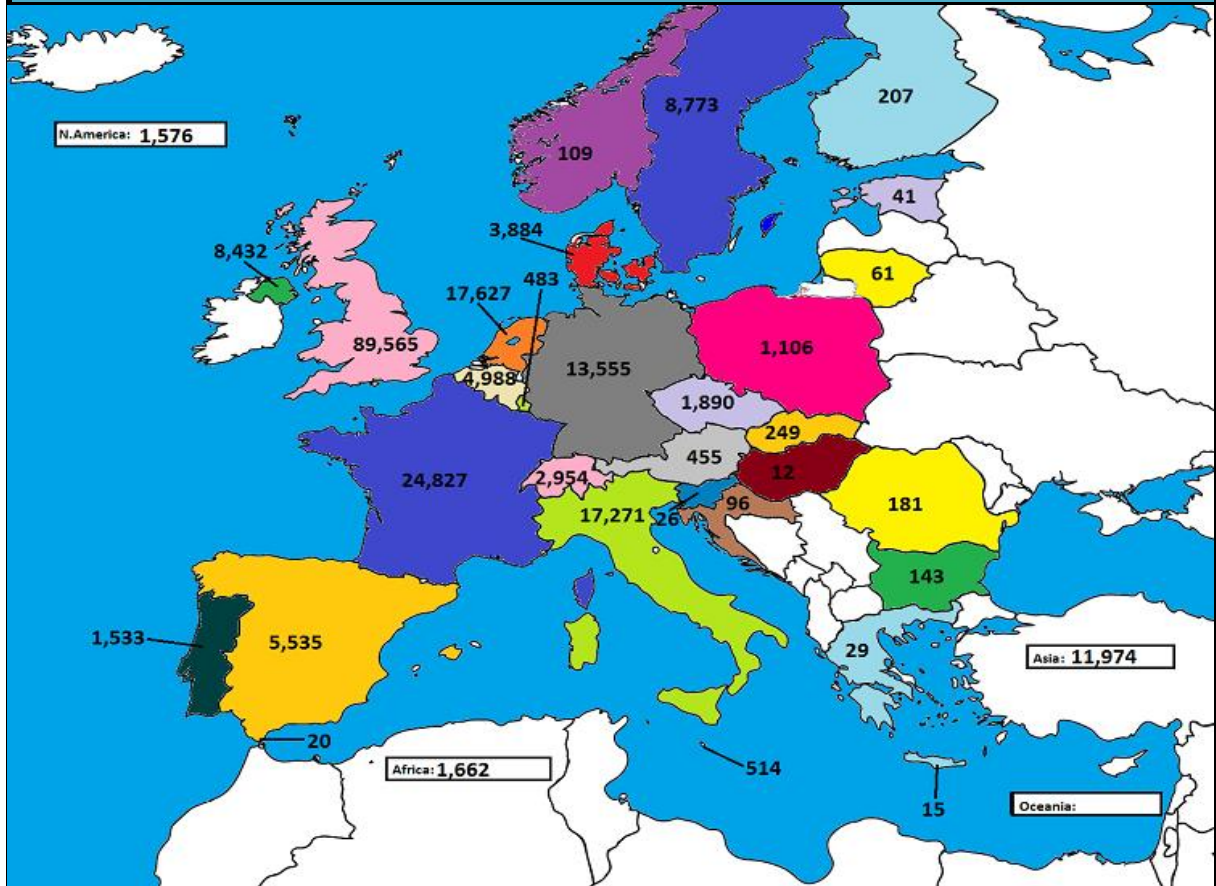
O4 Cow prices ex. VAT



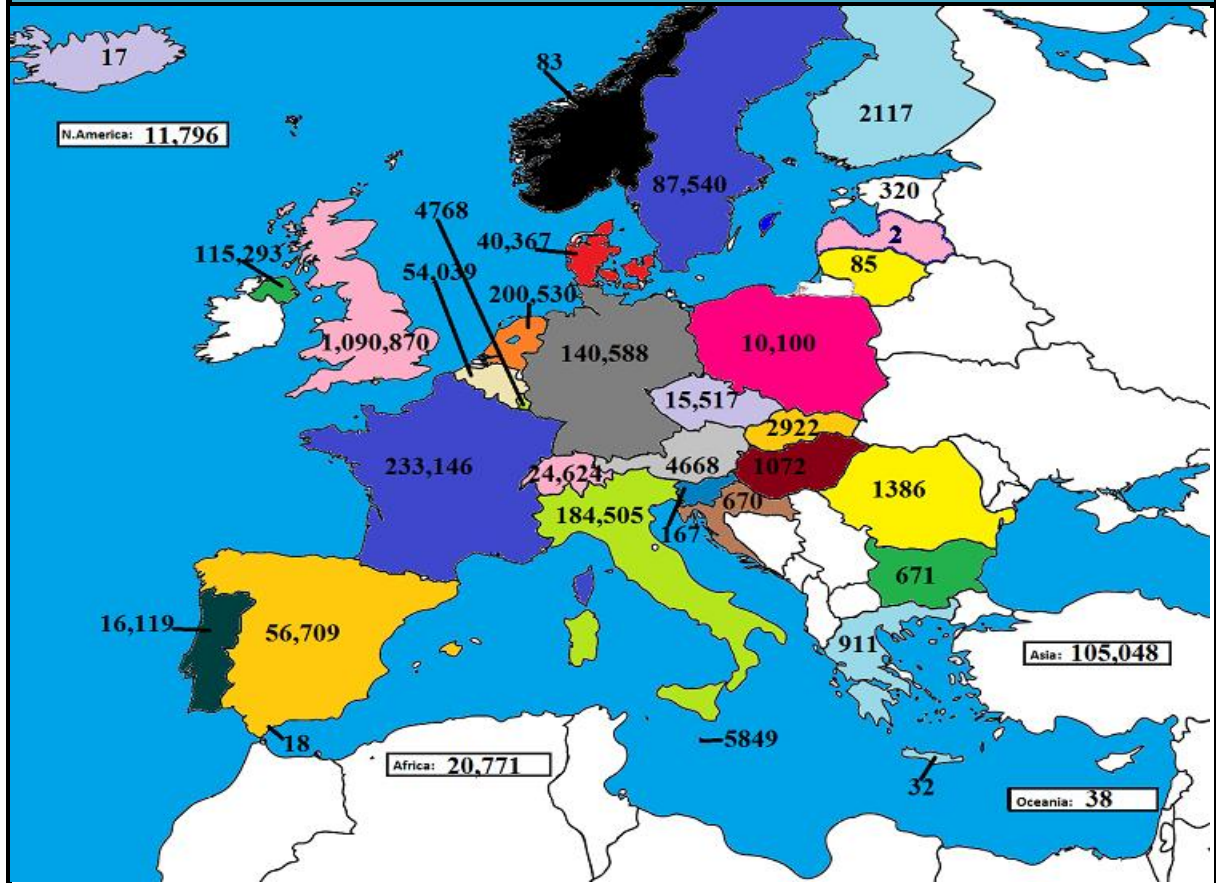




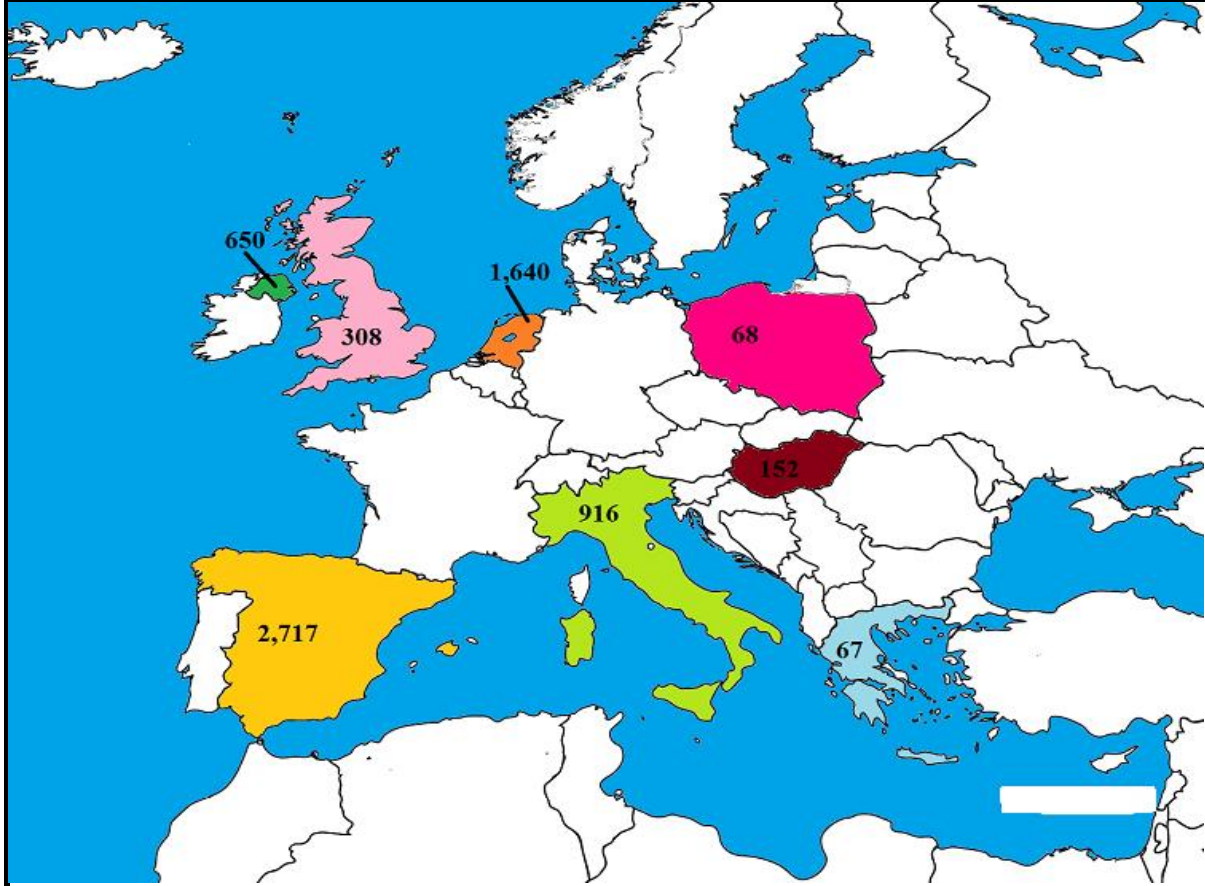
March 2019 Beef exports, €000 (CSO figures)



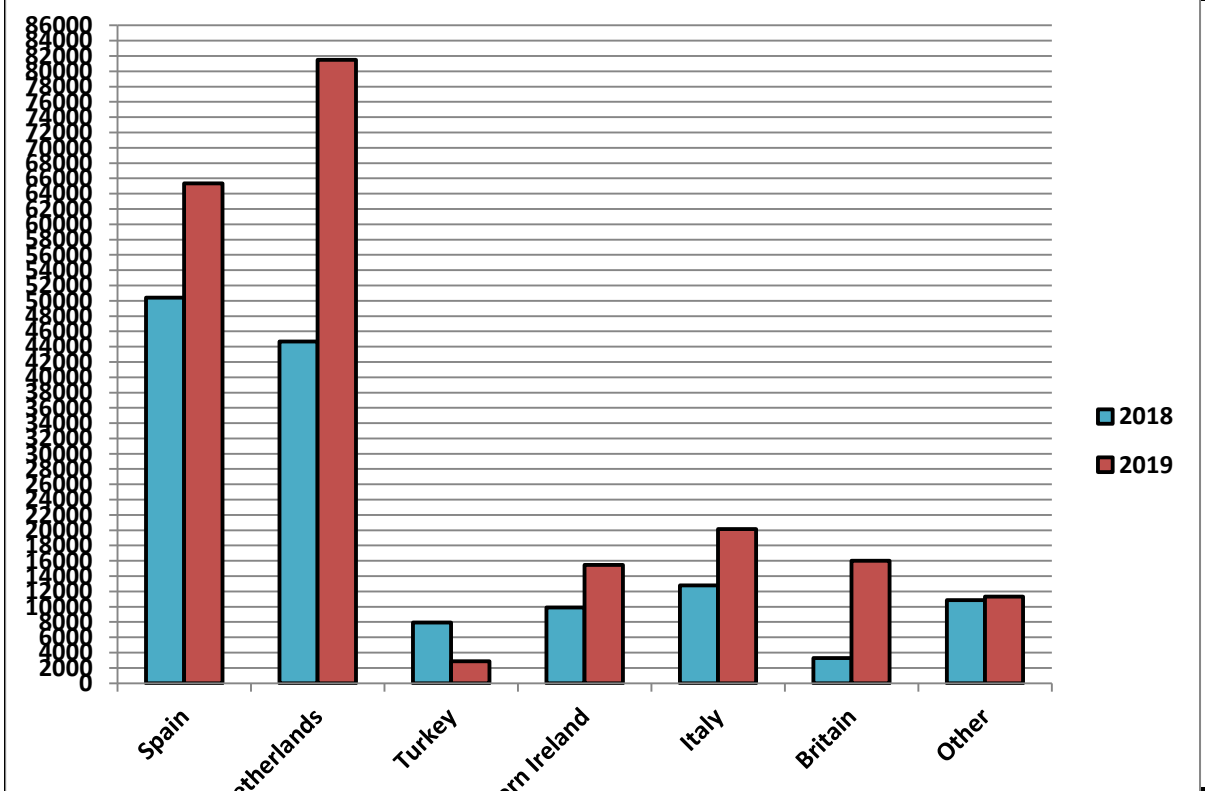
Cumulative beef exports to Dec 2018, €000 (CSO figures)

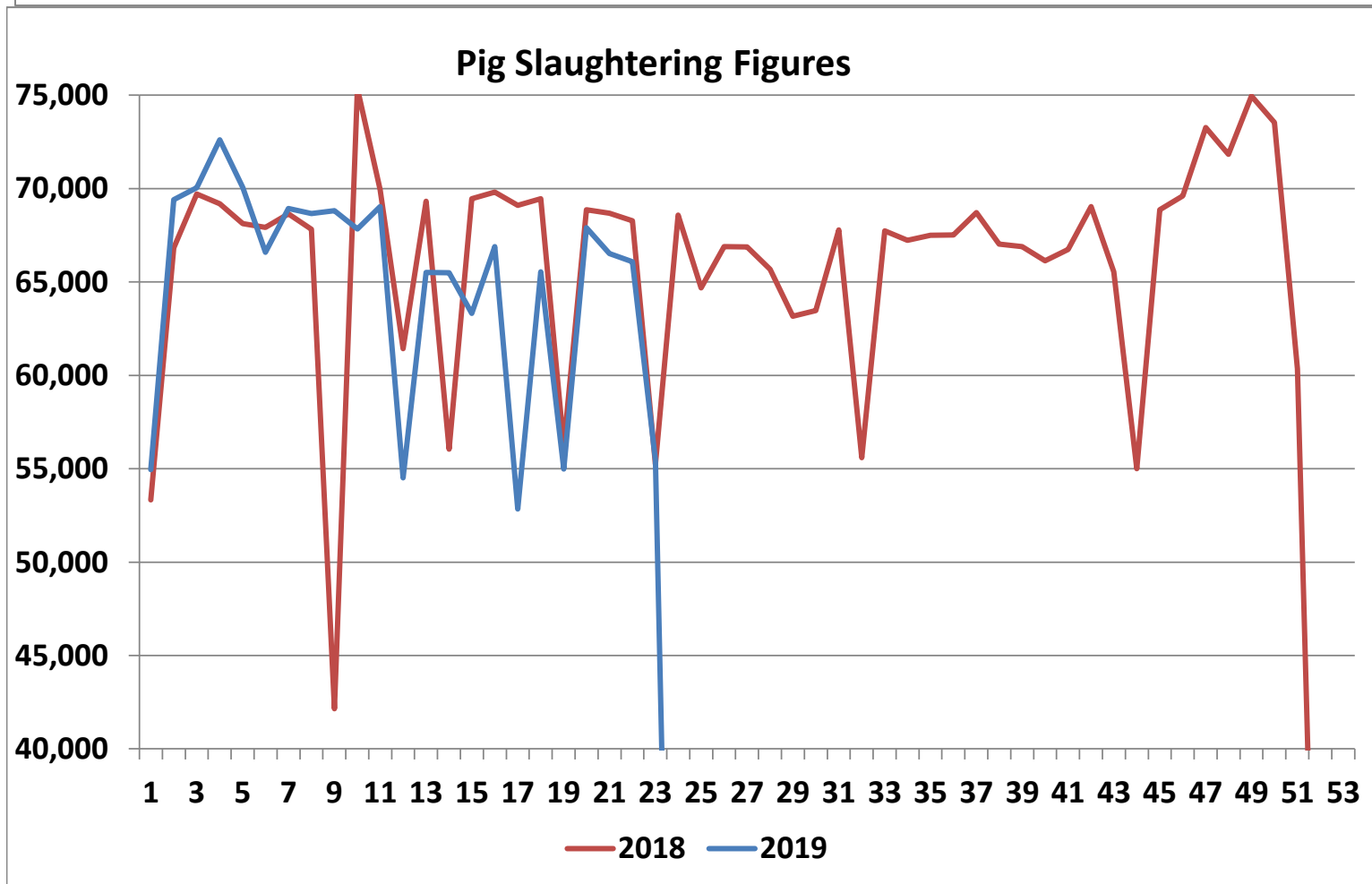
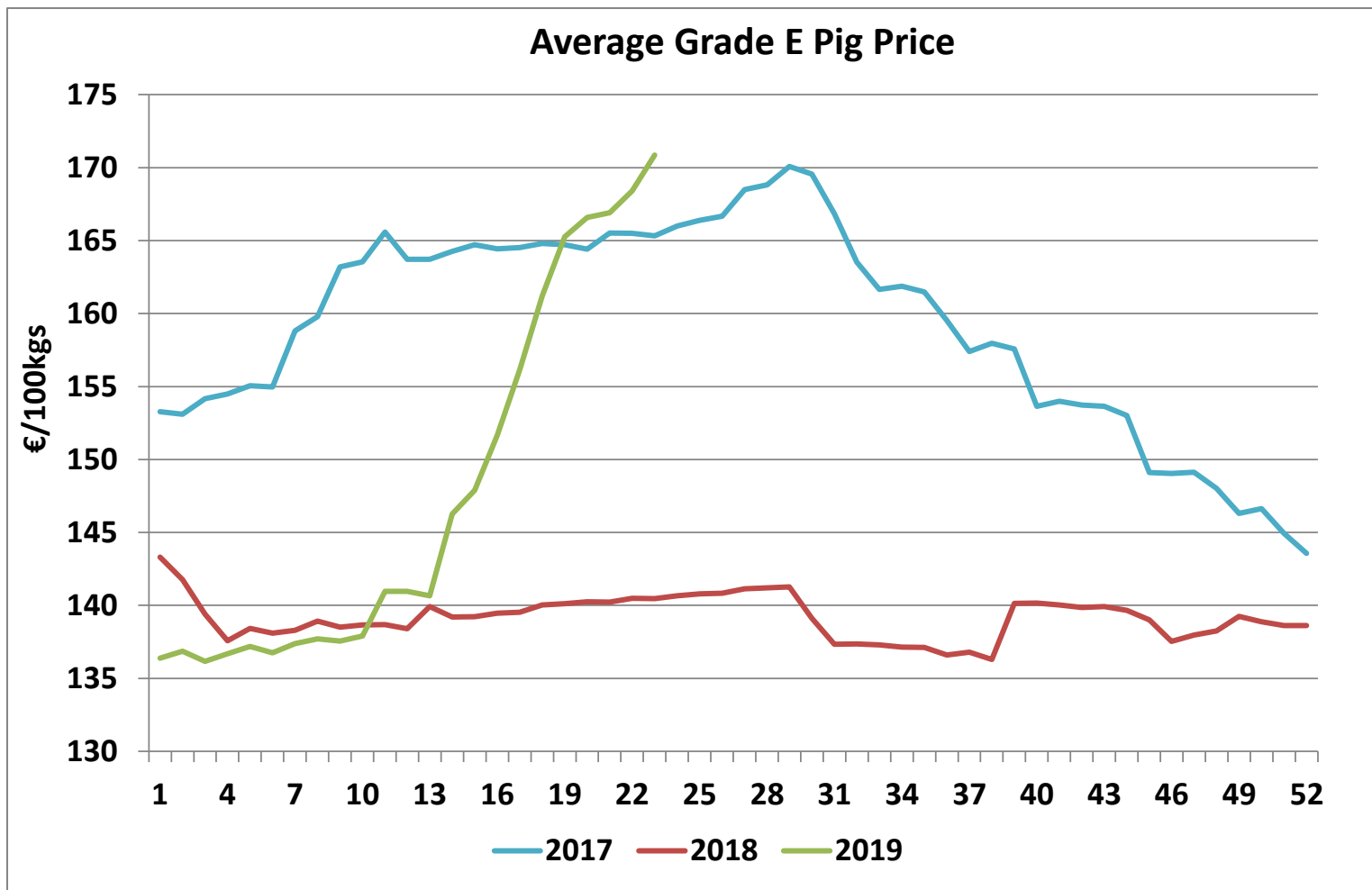


Cattle exported, w/c 27/05/19



Cumulative cattle export figures, 2019





Sheepmeat Information for Week 23

Irish Prices €/100 kg	2019	2018	Change
Ave Factory Price	511.30	551.05	-7.2%
Ave Mart Price	452.74	477.99	-5.3%
National Ave Price	493.73	529.13	-6.7%
YTD Ave	493.24	525.28	-6.1%

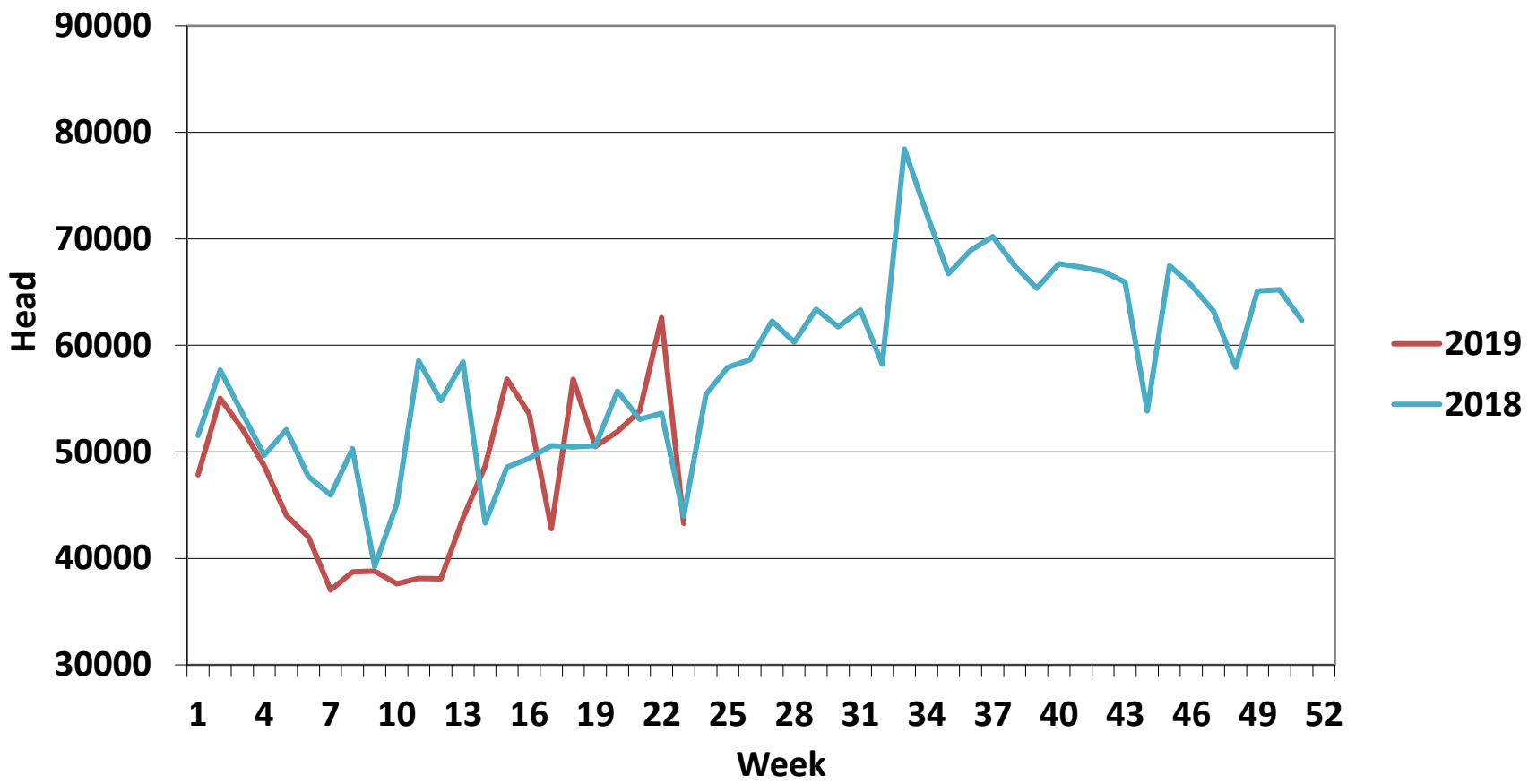
Slaughterings	2019	2018	Change
Weekly	43,299	43,965	-2%
YTD	1,082,670	1,163,941	-7%

EU Market Rates Heavy Lambs	€/100kg	% of Community Price
Belgium	518.4	96%
Denmark	512.7	96%
Germany	547.8	103%
Spain	492.2	93%
France	603.0	115%
Croatia	604.3	117%
Ireland	493.7	92%
Italy	538.0	101%
Cyprus	447.0	84%
Latvia	471.3	76%
Lithuania	383.8	88%
Netherlands	536.7	102%
Austria	545.0	102%
Poland	436.7	82%
Romania	229.6	38%
Finland	369.7	70%
Sweden	564.4	106%
Northern Ireland	464.8	87%
Great Britain	533.0	102%
United Kingdom	528.1	101%
Community	529.5	100%

**REPORT ON SLAUGHTERING AT SHEEP EXPORT PREMISES
WEEK 23**

CATEGORY	2019		2018		DIFFERENCE	
	Weekly	Cumulative	Weekly	Cumulative	Weekly	Cumulative
Lambs/Hoggets	4,770	726,658	6,215	817,026	-1445	90,368
Spring Lambs	32,288	194,666	30,579	154,522	1,709	40,144
Ewes and Rams	6,240	161,335	7,171	192,298	-931	30,963
Light Lambs	1	11	-	95	1	84
TOTAL	43,299	1,082,670	43,965	1,163,941	-666	-81,271

Weekly Sheep Slaughtering



Ave. Price €/100 kg for Sheepmeat

