

# Meat Market Report

01/07/19 - 07/07/19

Week

27



**An Roinn Talmhaíochta,  
Bia agus Mara**

Department of Agriculture,  
Food and the Marine

# MARKET SUMMARY

## Beef

### Deadweight Prices c/100Kg (Including VAT)

	U3	U4	R3	R4	O3	O4	P+
Steers	394.2	393.6	385.3	385.0	367.3	367.5	343.5
Heifers	413.5	412.1	398.1	396.7	381.2	378.8	347.0
Young Bulls	387.4	381.5	375.5	369.6	347.5	352.9	320.1
Cows			325.8	322.2	301.9	303.7	293.6

### Liveweight Prices

*Bull Calf Average Price	€158.4 per head (Excluding VAT)
**Young Store Average Price	€209.0 per 100kg (Excluding VAT)
***Yearling (male & female) Price	€189.5 per 100kg (Excluding VAT)

\* Aged 8-28 days \*\* Aged 180-364 days, Male & Female \*\*\*age 365-730 days

### Slaughterings

35,227 cattle slaughtered this week, of which steers were 11,641 (33%), heifers 9,849 (28%), young bulls 4,764 (13%) and cows 8,267 (23%). Total YTD slaughter is 926,288 compared to 883,615 in 2018, a 5% increase.

### Live Trade

3,754 cattle were exported in the week commencing 01/07/2019\*; 3,347 to EU (Except NI). Live exports for 2019 amount to 228,942 compared to 179,380 in 2018, up 28% on 2018 levels.

\*This data is provisional and subject to revision.

The next meeting of the Management Committee for the Common Organisation of Agricultural Markets (Animal Products Sector) is 18th July 2019

### CONTENTS:

Page 2: Market Summary Beef  
 Page 3: Market Summary Other Meats  
 Page 4: Beef Price and Slaughter Summary  
 Page 5: Comparative Beef Prices  
 Page 6: Steer and Young Bull Price  
 Page 7: Heifer and Cow Graphs  
 Page 8: Price and Slaughter Graphs  
 Page 9: Liveweight Beef Graphs

Page 10: Beef Export Maps  
 Page 11: Beef Export Info  
 Page 12: Pig price and slaughter graphs  
 Page 13: Sheep prices and slaughter  
 Page 15: Sheep price and slaughter graphs

# MARKET SUMMARY

## Pigmeat

Grade E Pig  
Prices (Ex.  
VAT)

The Grade E Pig price for week commencing 01/07/2019 was €173.85 per 100Kg compared to €141.14 in the same week last year, which represents a 23% increase.

Slaughtering

64,084 pigs were slaughtered in week 27 of which 1,530 were sows. The cumulative figure for pig slaughterings in 2019 is 1,754,346 which is a 1% decrease with the same point last year.

## Sheepmeat

Sheepmeat  
Prices (Ex.  
VAT)

The national average price for the week commencing 01/07/2019 was €449.55 per 100Kg, a decrease of 8.5% over the same week last year.

Slaughtering

56,776 sheep were slaughtered at sheep export premises the week commencing 01/07/2019, compared to 62,285 in the same week of 2018. Sheep slaughterings for 2019 are 6% down on 2018 at 1,309,572 head.

Live Trade

Total live exports to European Countries stood at 20,769 head to the end of 2018.

## Poultry

Slaughtering

Cumulative poultry slaughterings for 2019\* stand at 54,955,454 birds at the end of week 27, up 9% compared to the same period last year.

\*Latest Figures are provisional and subject to change

Dead Weight Prices	W/C	W/C	Same week 2018	% change prev week	% change 2018
	01/07/19	24/06/19			
Steers (R3) (c/kg)	365.7	370.4	395.5	-1.3%	-7.5%
Heifers (R3) (c/kg)	377.1	384.3	408.8	-1.9%	-7.8%
Young Bulls (U3) (c/kg)	367.1	375.0	406.3	-2.1%	-9.6%
Cows (04) (c/kg)	288.4	289.9	318.0	-0.5%	-9.3%

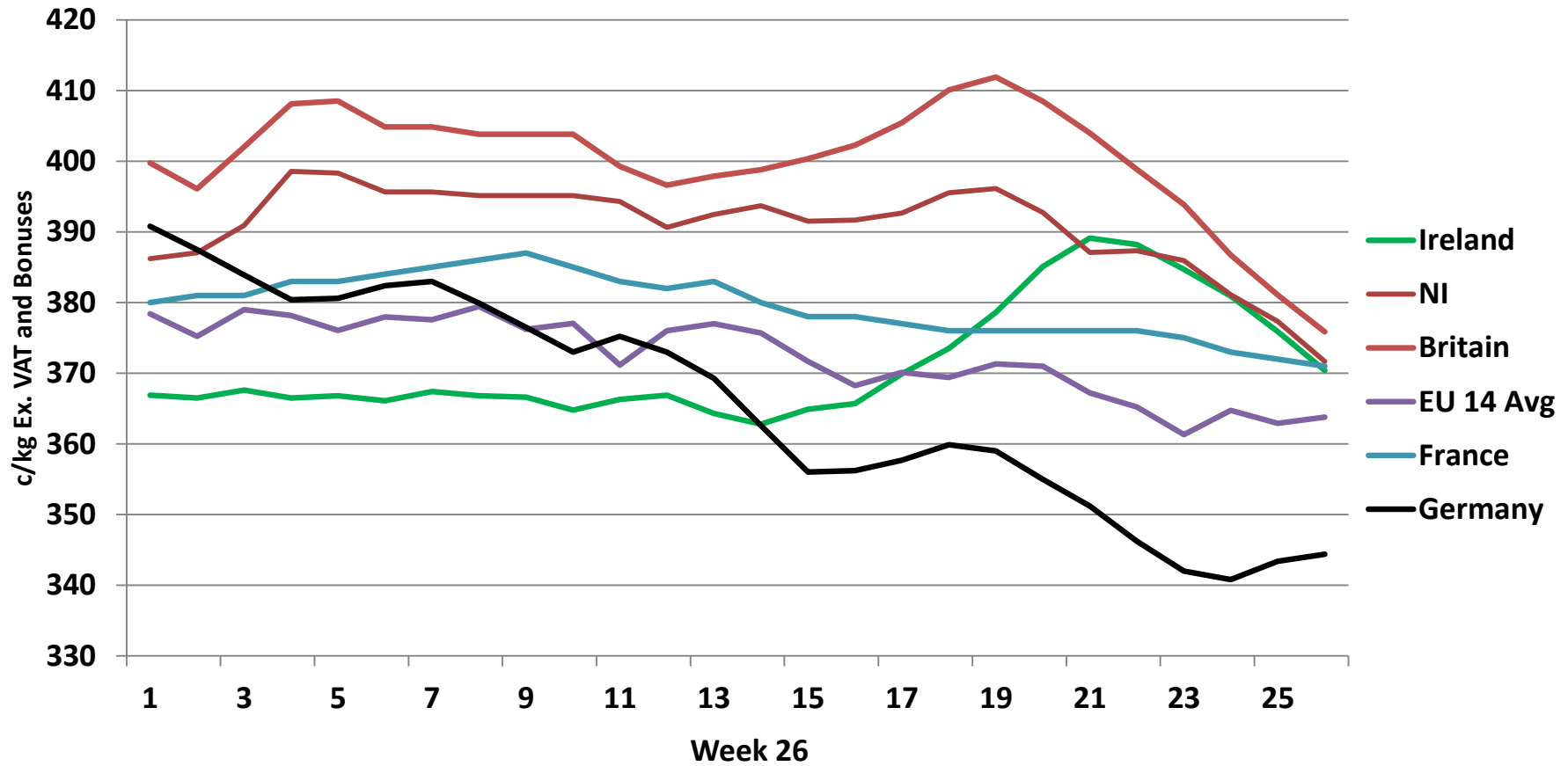
Live Weight Prices	W/C	W/C	Same week 2018	% change previous week	% change 2018
	01/07/19	24/06/19			
Yearlings (Male) (Aged 365 - 730 days) - (€/100Kg)	186	189	191	-1.6%	-2.6%
Yearlings (Female) (Aged 365 - 730 days) - (€/100Kg)	193	195	196	-1.0%	-1.5%
Young Stores (Male & Female) (Aged 180 - 364 days) - (€/100Kg)	209	217	224	-3.7%	-6.7%
Bull Calf (€/head) Dairy	140.2	136.4	163.8	2.8%	-14.4%
Bull Calf (€/head) Beef	176.6	182.8	219.4	-3.4%	-19.5%
Bull Calf (€/head) Average	158.4	159.6	191.6	-0.8%	-17.3%

Slaughter Figures	% of weekly figures	W/C	Same week 2018	Year to Date		Change 2019 v 2018	
		01-Jul-19		2019	2018	Head	%
Steers	33.0%	11,641	11,681	298,578	303,488	-4,910	-1.6%
Cows	23.5%	8,267	9,282	193,196	195,509	-2,313	-1.2%
Heifers	28.0%	9,849	8,639	277,948	249,606	28,342	11.4%
Young Bulls	13.5%	4,764	4,111	135,308	118,697	16,611	14.0%
Mature Bulls	2.0%	706	482	21,258	16,315	4,943	30.3%
<b>Total</b>	<b>100%</b>	<b>35,227</b>	<b>34,195</b>	<b>926,288</b>	<b>883,615</b>	<b>42,673</b>	<b>4.8%</b>

821

Live Exports	W/C	Same week 2018	W/C	Year to Date		Change 2019 v 2018	
	1-Jul-19		24-Jun-19	2019	2018	Head	%
Northern Ireland	407	107	354	17,784	9,164	8,620	94%
EU Except NI	3,347	2,498	235	203,259	160,233	43,026	27%
Third Countries	0	0	0	7,899	9,983	-2,084	-
<b>Total</b>	<b>3,754</b>	<b>2,605</b>	<b>589</b>	<b>228,942</b>	<b>179,380</b>	<b>49,562</b>	<b>28%</b>
<b>Calves YTD:</b>	<b>186,901</b>			<b>Adult YTD:Cattle</b>	<b>41,912</b>		

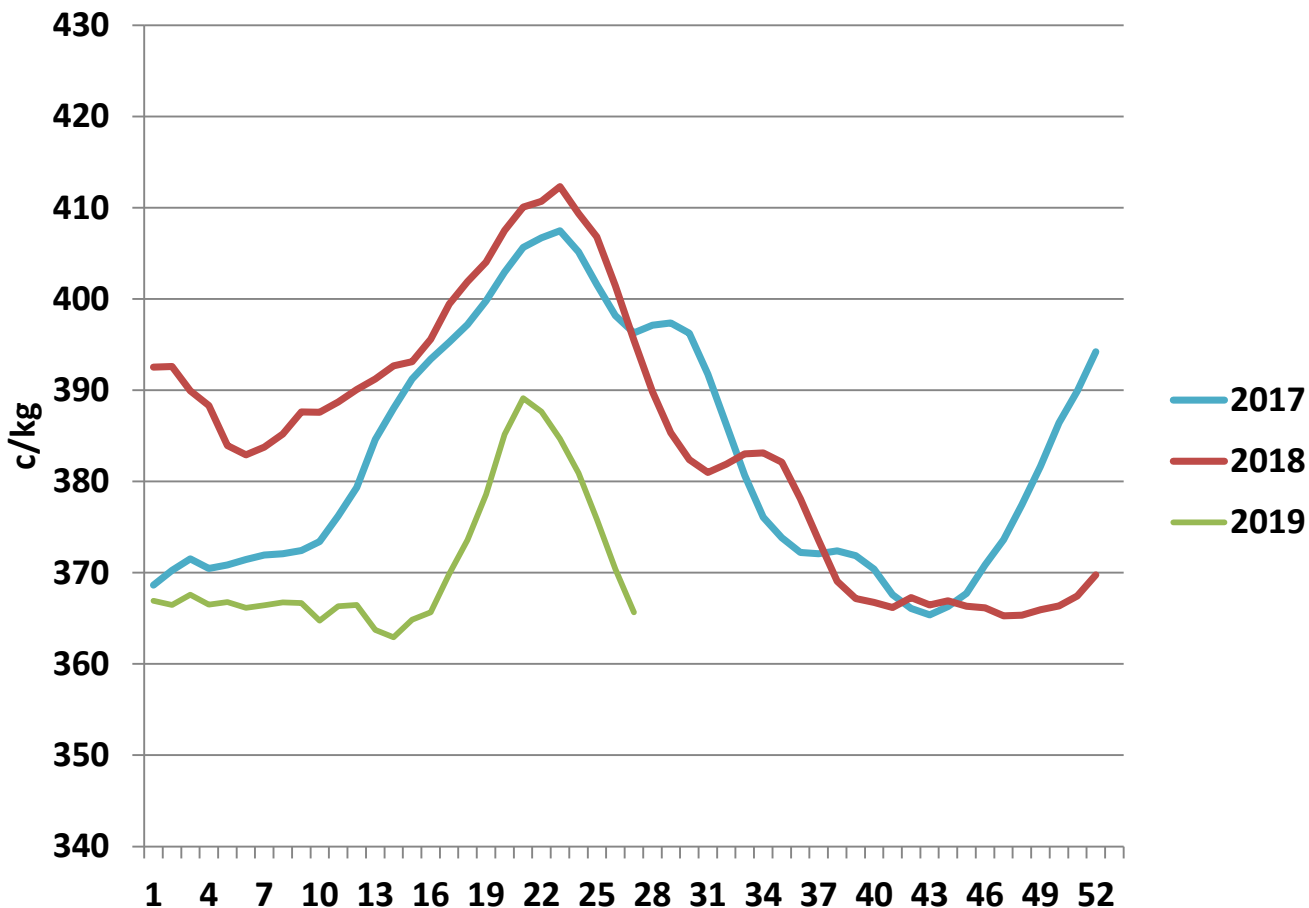
## Irish Deadweight Cattle Prices vs Selected Other Markets, 2019



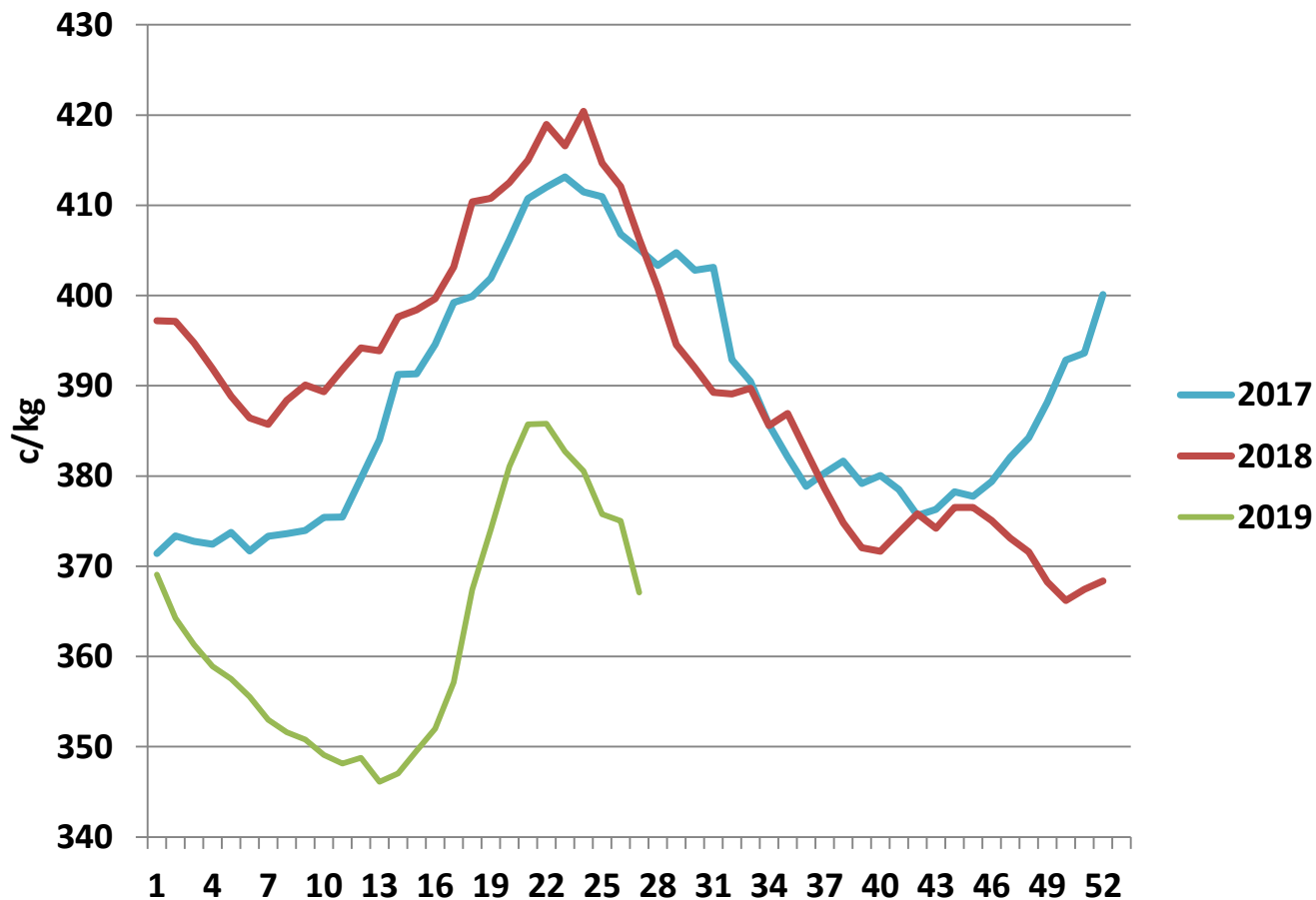
### Livestock Pricing

	Ireland	NI	Britain	EU 14 Average	France	Germany
W/C 24/06/19	370.4	371.66	375.84	363.8	371	344.4

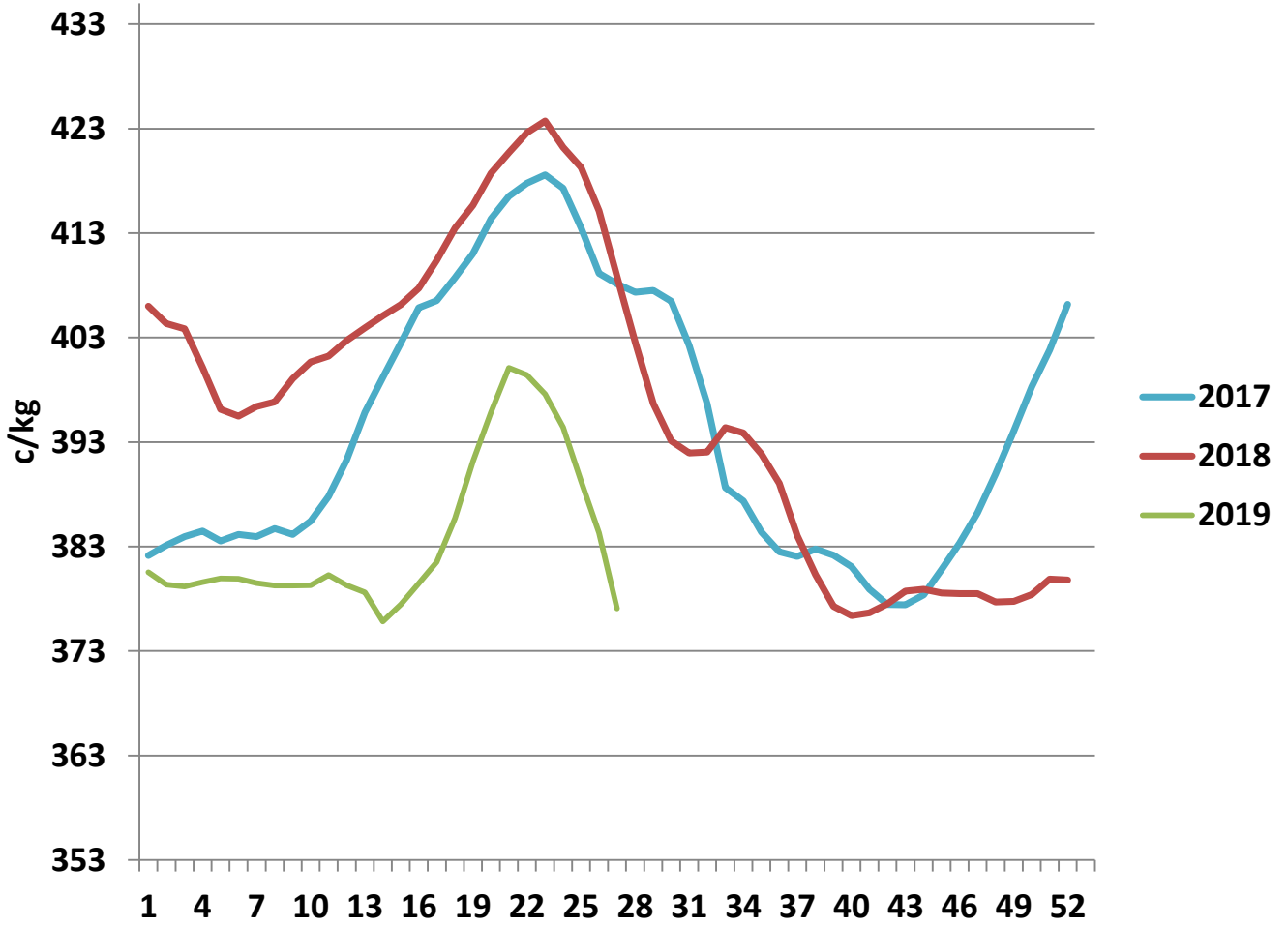
### R3 Steer prices ex. VAT



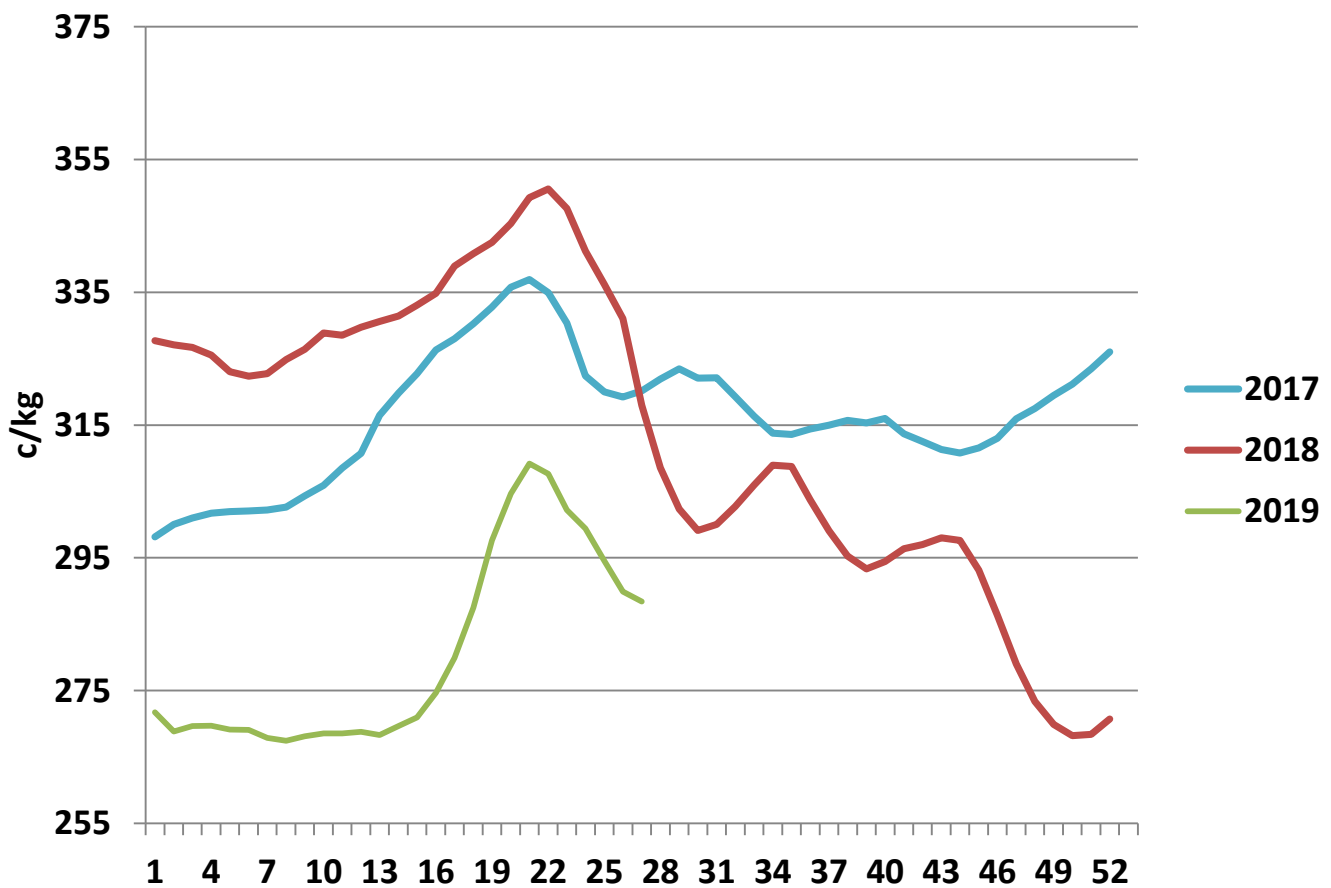
### U3 Young Bull prices ex. VAT

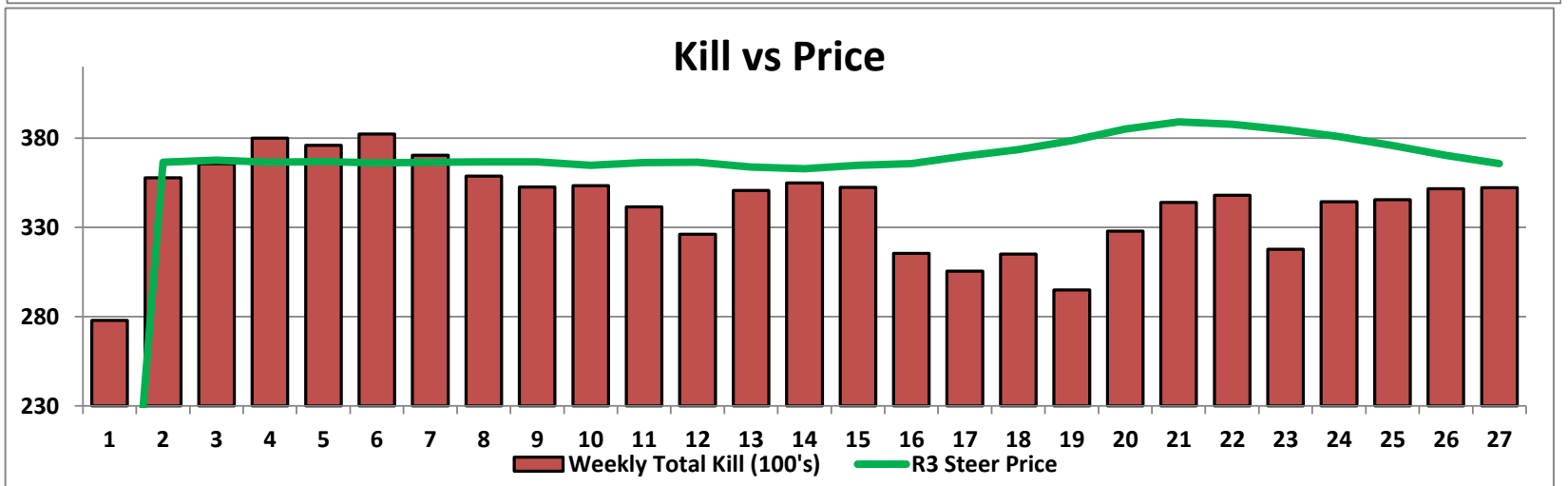
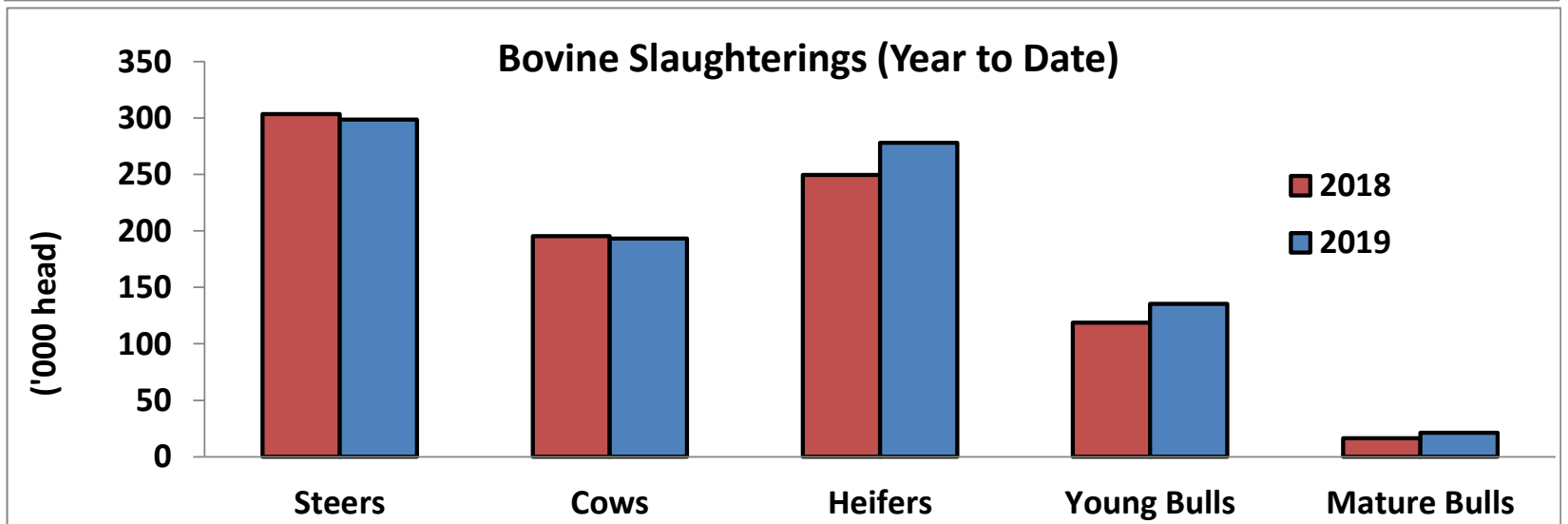
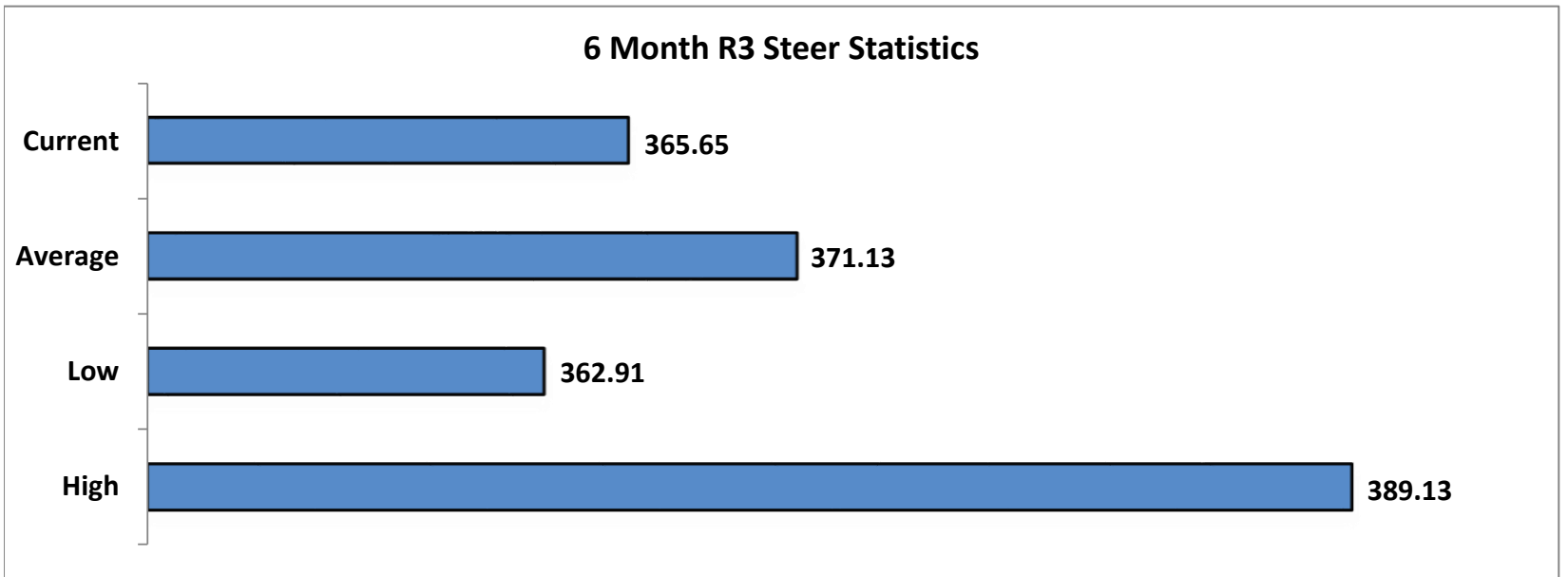


### R3 Heifer prices ex. VAT



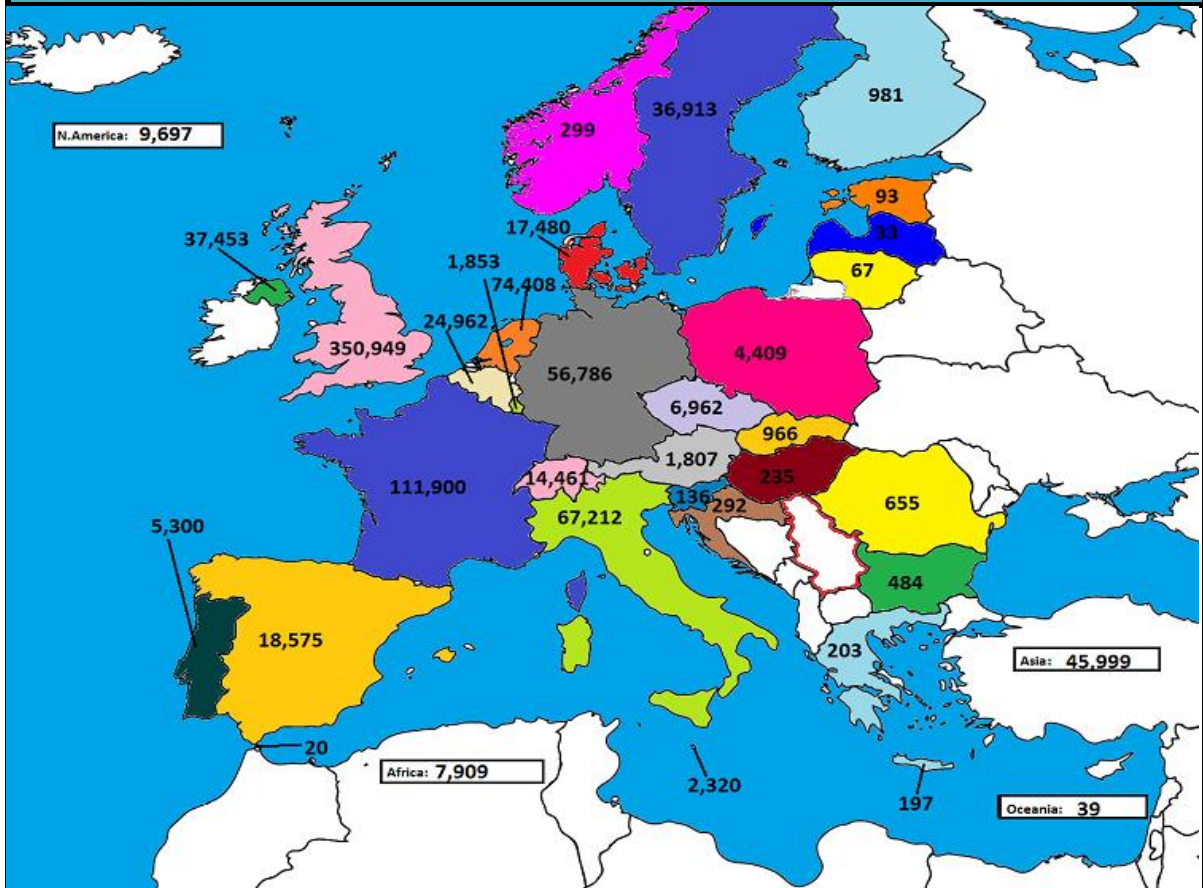
### O4 Cow prices ex. VAT



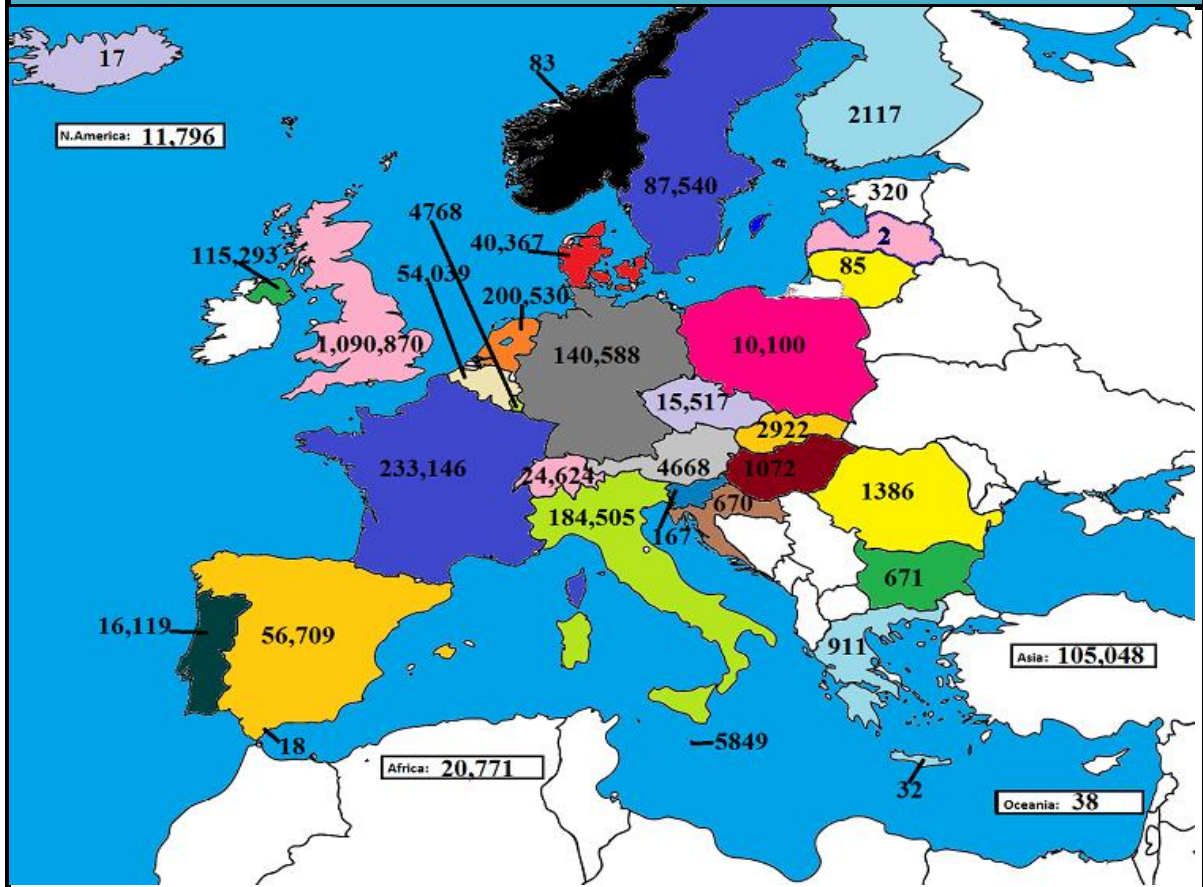




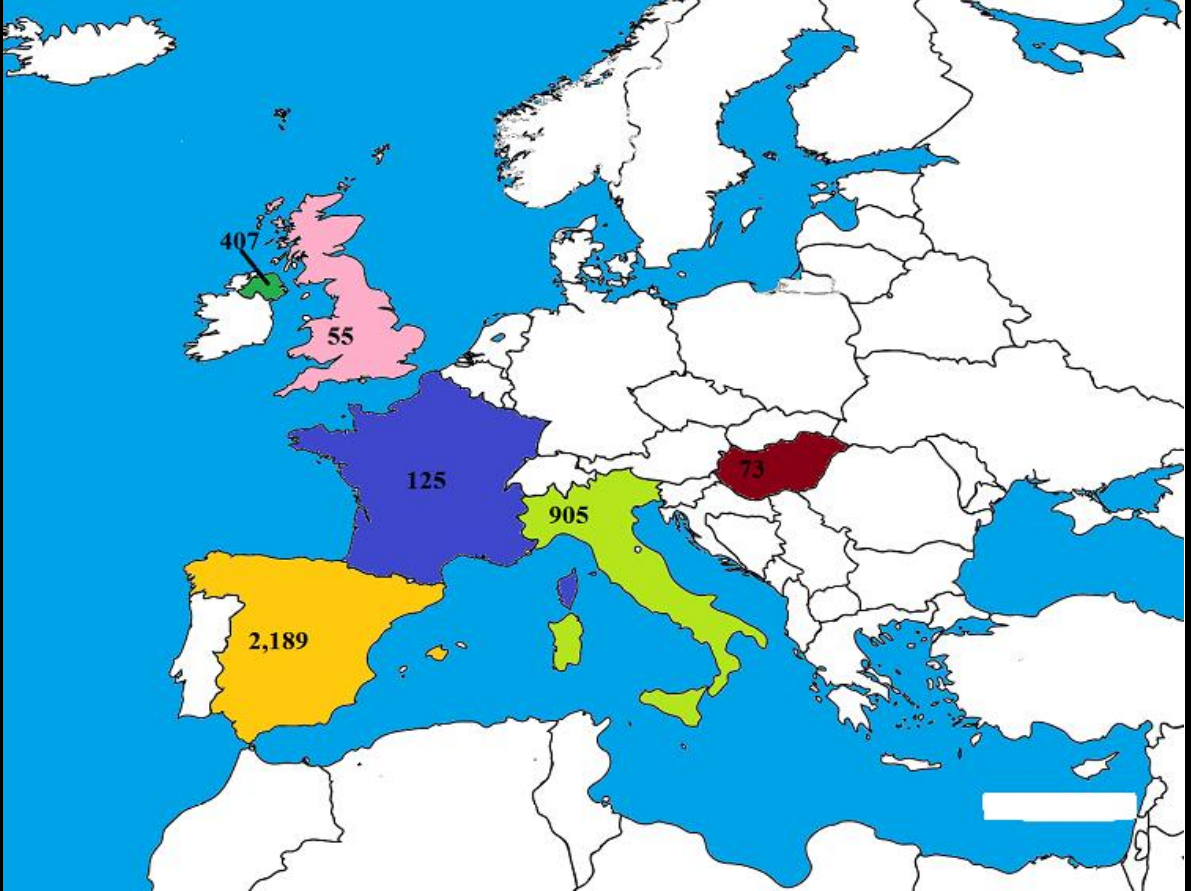
**April 2019 Beef exports, €000 (CSO figures)**



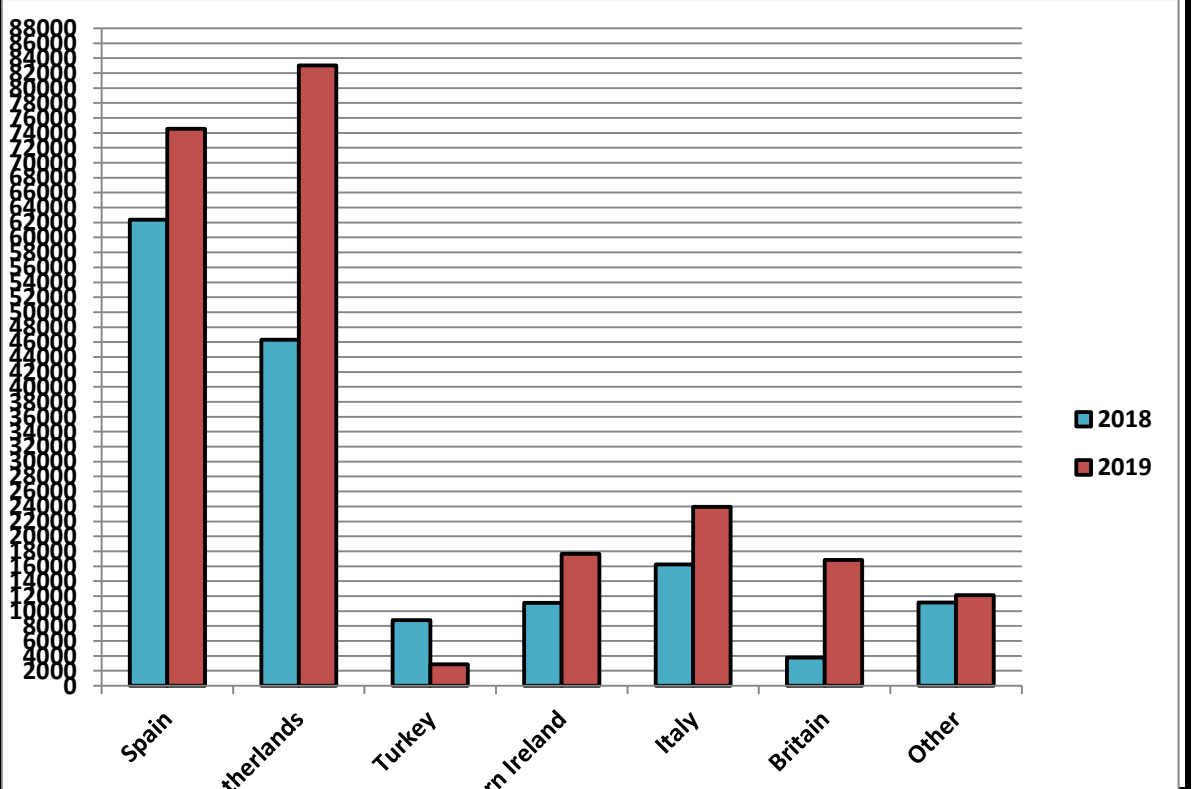
**Cumulative beef exports to Dec 2018, €000 (CSO figures)**

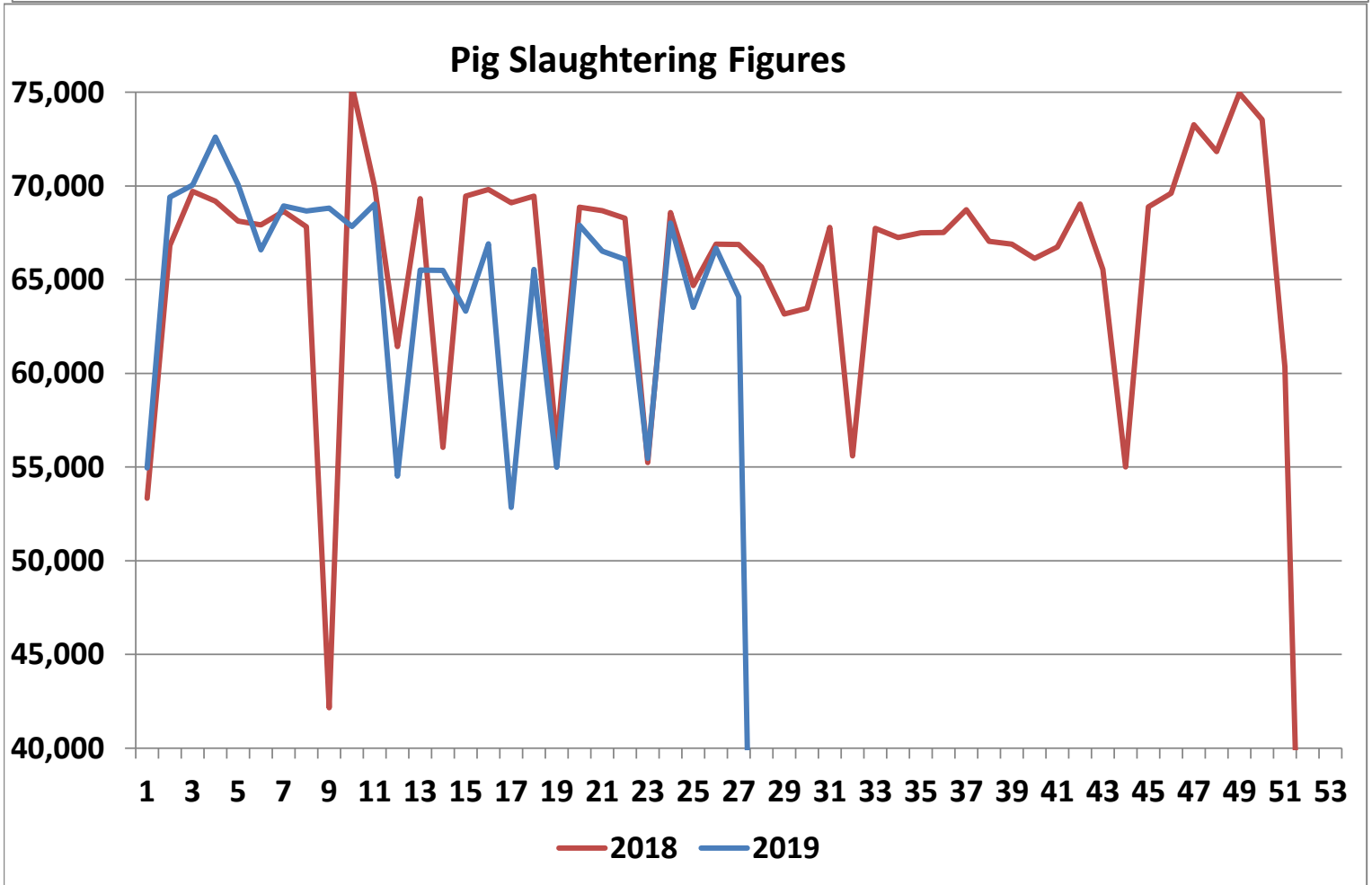
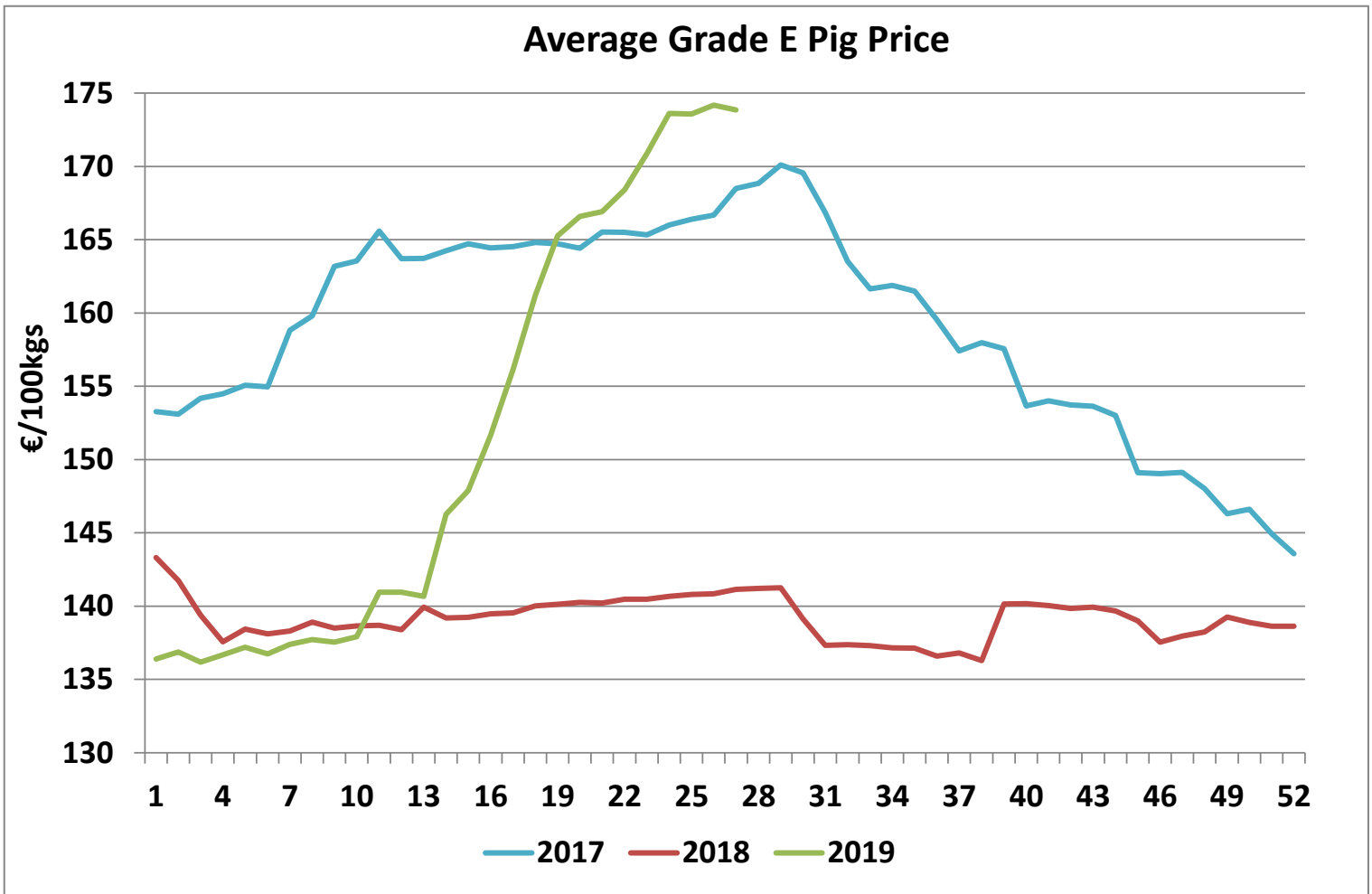


Cattle exported, w/c 01/07/19



Cumulative cattle export figures, 2019





**Sheepmeat Information for Week 27**

Irish Prices €/100 kg	2019	2018	Change
Ave Factory Price	470.06	521.12	-9.8%
Ave Mart Price	401.70	422.43	-4.9%
National Ave Price	449.55	491.51	-8.5%
YTD Ave	491.19	524.60	-6.4%

Slaughterings	2019	2018	Change
Weekly	56,776	62,285	-9%
YTD	1,309,572	1,398,181	-6%

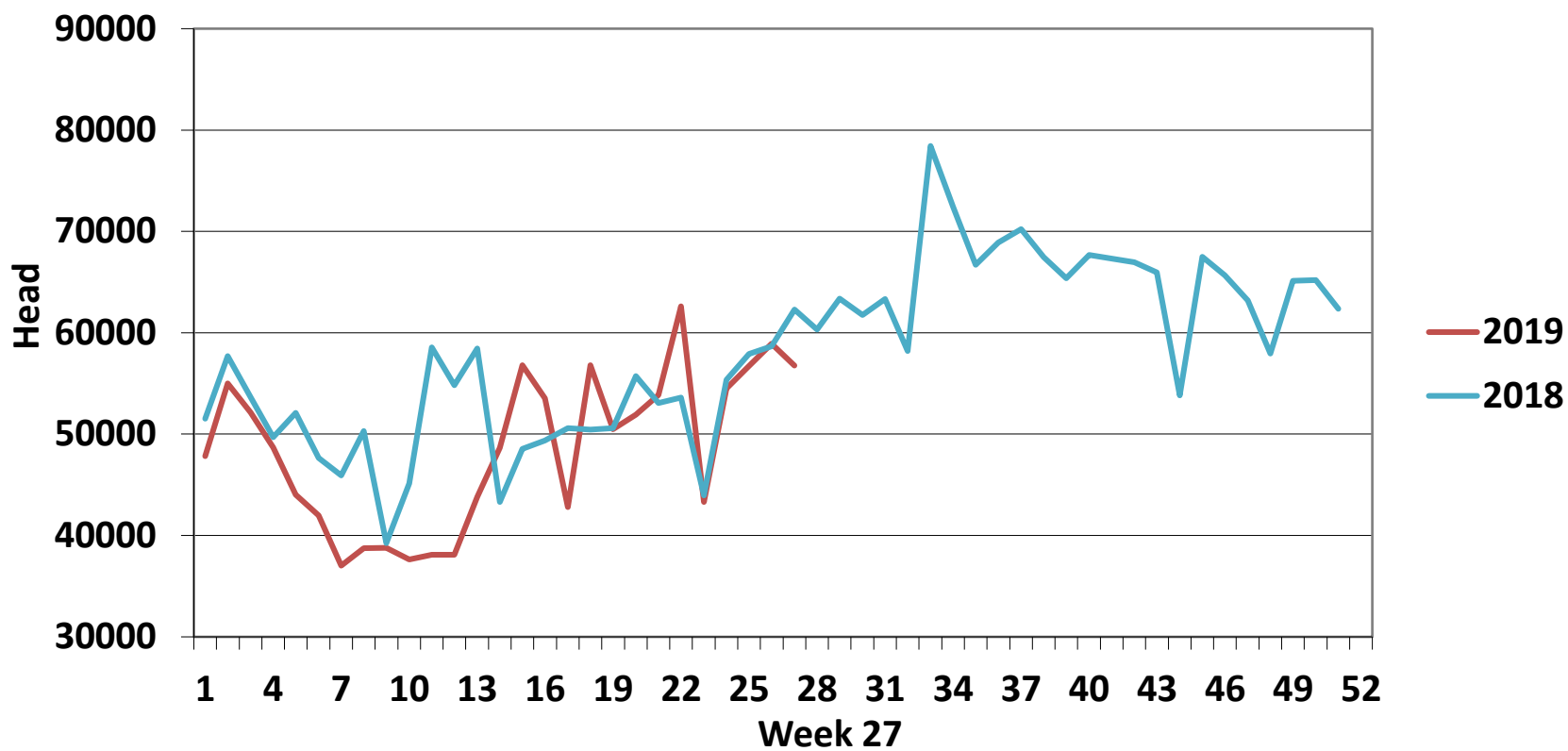
EU Market Rates Heavy Lambs	€/100kg	% of Community Price
Belgium	516.1	98%
Denmark	512.7	97%
Germany	531.8	101%
Spain	484.8	92%
France	594.0	113%
Croatia	504.3	96%
Ireland	564.3	107%
Italy	535.0	102%
Cyprus	451.0	86%
Latvia	409.3	78%
Lithuania	386.9	73%
Netherlands	533.3	101%
Austria	545.0	104%
Poland	445.6	85%
Romania	221.0	42%
Finland	358.8	68%
Sweden	550.0	104%
Northern Ireland	464.2	88%
Great Britain	506.0	96%
United Kingdom	503.0	96%
Community	526.5	100%

**REPORT ON SLAUGHTERING AT SHEEP EXPORT PREMISES  
WEEK 27**

CATEGORY	2019		2018		DIFFERENCE	
	Weekly	Cumulative	Weekly	Cumulative	Weekly	Cumulative
Lambs/Hoggets	672	735,333	668	826,427	4	91,094
Spring Lambs	47,911	384,252	51,790	342,940	-3,879	41,312
Ewes and Rams	8,172	189,888	9,827	228,689	-1,655	38,801
Light Lambs	21	99	-	125	21	26
<b>TOTAL</b>	<b>56,776</b>	<b>1,309,572</b>	<b>62,285</b>	<b>1,398,181</b>	<b>-5,509</b>	<b>-88,609</b>



### Weekly Sheep Slaughtering



### Ave. Price €/100 kg for Sheepmeat

