

# Meat Market Report

29/07/19 - 04/08/19

Week

31



**An Roinn Talmhaíochta,  
Bia agus Mara**

Department of Agriculture,  
Food and the Marine

# MARKET SUMMARY

## Beef

### Deadweight Prices c/100Kg (Including VAT)

	U3	U4	R3	R4	O3	O4	P+
Steers	376.0	373.6	364.1	363.3	345.6	346.3	321.6
Heifers	388.9	387.2	375.8	374.1	360.2	357.0	326.4
Young Bulls	370.9	385.3	350.9	357.3	328.8	339.6	315.3
Cows			314.9	316.5	296.1	296.3	286.9

### Liveweight Prices

*Bull Calf Average Price	€170.9 per head (Excluding VAT)
**Young Store Average Price	€199.0 per 100kg (Excluding VAT)
***Yearling (male & female) Price	€179.0 per 100kg (Excluding VAT)

\* Aged 8-28 days \*\* Aged 180-364 days, Male & Female \*\*\*age 365-730 days

### Slaughterings

29,094 cattle slaughtered this week, of which steers were 11,738 (40%), heifers 7,849 (27%), young bulls 3,253 (11%) and cows 5,608 (19%). Total YTD slaughter is 1,059,731 compared to 1,025,326 in 2018, a 3% increase.

### Live Trade

2,279 cattle were exported in the week commencing 22/07/2019\*; 1,783 to EU (Except NI). Live exports for 2019 amount to 235,278 compared to 189,927 in 2018, up 24% on 2018 levels.

\*This data is provisional and subject to revision.

The next meeting of the Management Committee for the Common Organisation of Agricultural Markets (Animal Products Sector) is 29th August 2019

### CONTENTS:

Page 2: Market Summary Beef

Page 3: Market Summary Other Meats

Page 4: Beef Price and Slaughter Summary

Page 5: Comparative Beef Prices

Page 6: Steer and Young Bull Price

Page 7: Heifer and Cow Graphs

Page 8: Price and Slaughter Graphs

Page 9: Liveweight Beef Graphs

Page 10: Beef Export Maps

Page 11: Beef Export Info

Page 12: Pig price and slaughter graphs

Page 13: Sheep prices and slaughter

Page 15: Sheep price and slaughter graphs

# MARKET SUMMARY

## Pigmeat

Grade E Pig  
Prices (Ex.  
VAT)

The Grade E Pig price for week commencing 29/07/2019 was €170.79 per 100Kg compared to €137.33 in the same week last year, which represents a 24% increase.

Slaughtering

67,836 pigs were slaughtered in week 31 of which 1,855 were sows. The cumulative figure for pig slaughterings in 2019 is 2,017,168 which is a 1% decrease with the same point last year.

## Sheepmeat

Sheepmeat  
Prices (Ex.  
VAT)

The national average price for the week commencing 29/07/2019 was €415.15 per 100Kg, a decrease of 7.8% over the same week last year.

Slaughtering

52,802 sheep were slaughtered at sheep export premises the week commencing 29/07/2019, compared to 63,326 in the same week of 2018. Sheep slaughterings for 2019 are 6% down on 2018 at 1,544,423 head.

Live Trade

Total live exports to European Countries stood at 20,769 head to the end of 2018.

## Poultry

Slaughtering

Cumulative poultry slaughterings for 2019\* stand at 62,972,648 birds at the end of week 31, up 8% compared to the same period last year.

\*Latest Figures are provisional and subject to change

Dead Weight Prices	W/C	W/C	Same week 2018	% change prev week	% change 2018
	29/07/19	22/07/19			
Steers (R3) (c/kg)	345.4	348.6	381.0	-0.9%	-9.3%
Heifers (R3) (c/kg)	356.5	360.4	392.0	-1.1%	-9.0%
Young Bulls (U3) (c/kg)	351.9	349.7	389.3	0.6%	-9.6%
Cows (04) (c/kg)	281.1	280.6	300.0	0.2%	-6.3%

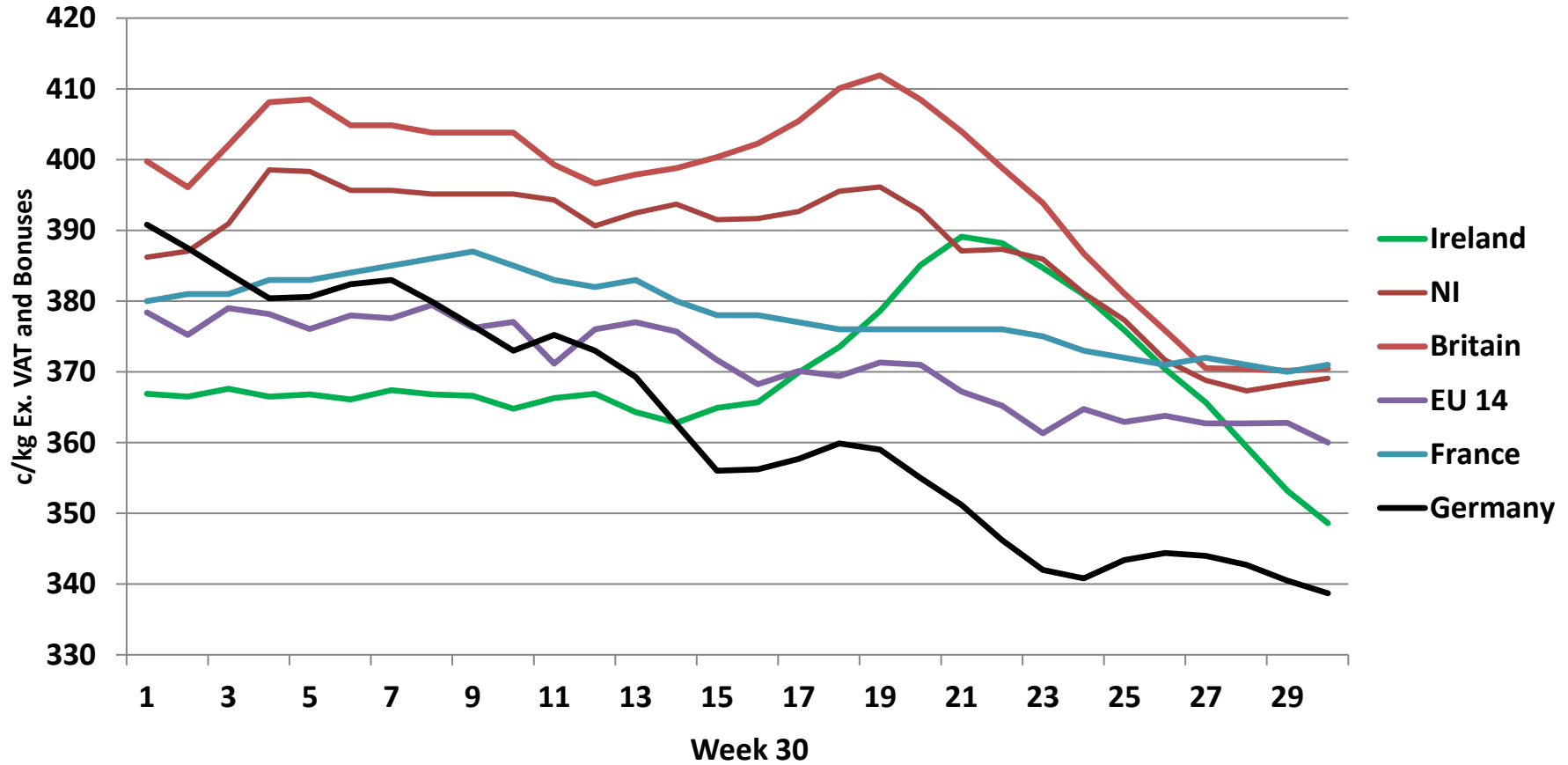
Live Weight Prices	W/C	W/C	Same week 2018	% change previous week	% change 2018
	29/07/19	22/07/19			
Yearlings (Male) (Aged 365 - 730 days) - (€/100Kg)	174	178	176	-2.2%	-1.1%
Yearlings (Female) (Aged 365 - 730 days) - (€/100Kg)	184	188	187	-2.1%	-1.6%
Young Stores (Male & Female) (Aged 180 - 364 days) - (€/100Kg)	199	198	218	0.5%	-8.7%
Bull Calf (€/head) Dairy	140.3	148.5	160.1	-5.5%	-12.4%
Bull Calf (€/head) Beef	201.5	229.9	210.5	-12.4%	-4.3%
Bull Calf (€/head) Average	170.9	189.2	185.3	-9.7%	-7.8%

Slaughter Figures	% of weekly figures	W/C	Same week 2018	Year to Date		Change 2019 v 2018	
		29-Jul-19		2019	2018	Head	%
Steers	40.3%	11,738	12,445	348,909	360,215	-11,306	-3.1%
Cows	19.3%	5,608	7,775	222,305	229,051	-6,746	-2.9%
Heifers	27.0%	7,849	8,091	313,808	284,472	29,336	10.3%
Young Bulls	11.2%	3,253	2,323	150,602	132,626	17,976	13.6%
Mature Bulls	2.2%	646	676	24,107	18,962	5,145	27.1%
<b>Total</b>	<b>100%</b>	<b>29,094</b>	<b>31,310</b>	<b>1,059,731</b>	<b>1,025,326</b>	<b>34,405</b>	<b>3.4%</b>

821

Live Exports	W/C	Same week 2018	W/C	Year to Date		Change 2019 v 2018	
	22-Jul-19		15-Jul-19	2019	2018	Head	%
Northern Ireland	496	306	582	19,131	9,845	9,286	94%
EU Except NI	1,783	1,439	1,216	208,248	165,973	42,275	25%
Third Countries	0	407	0	7,899	14,109	-6,210	-
<b>Total</b>	<b>2,279</b>	<b>2,152</b>	<b>1,798</b>	<b>235,278</b>	<b>189,927</b>	<b>45,351</b>	<b>24%</b>
<b>Calves YTD:</b>	<b>189,675</b>			<b>Adult YTD:Cattle</b>	<b>45,474</b>		

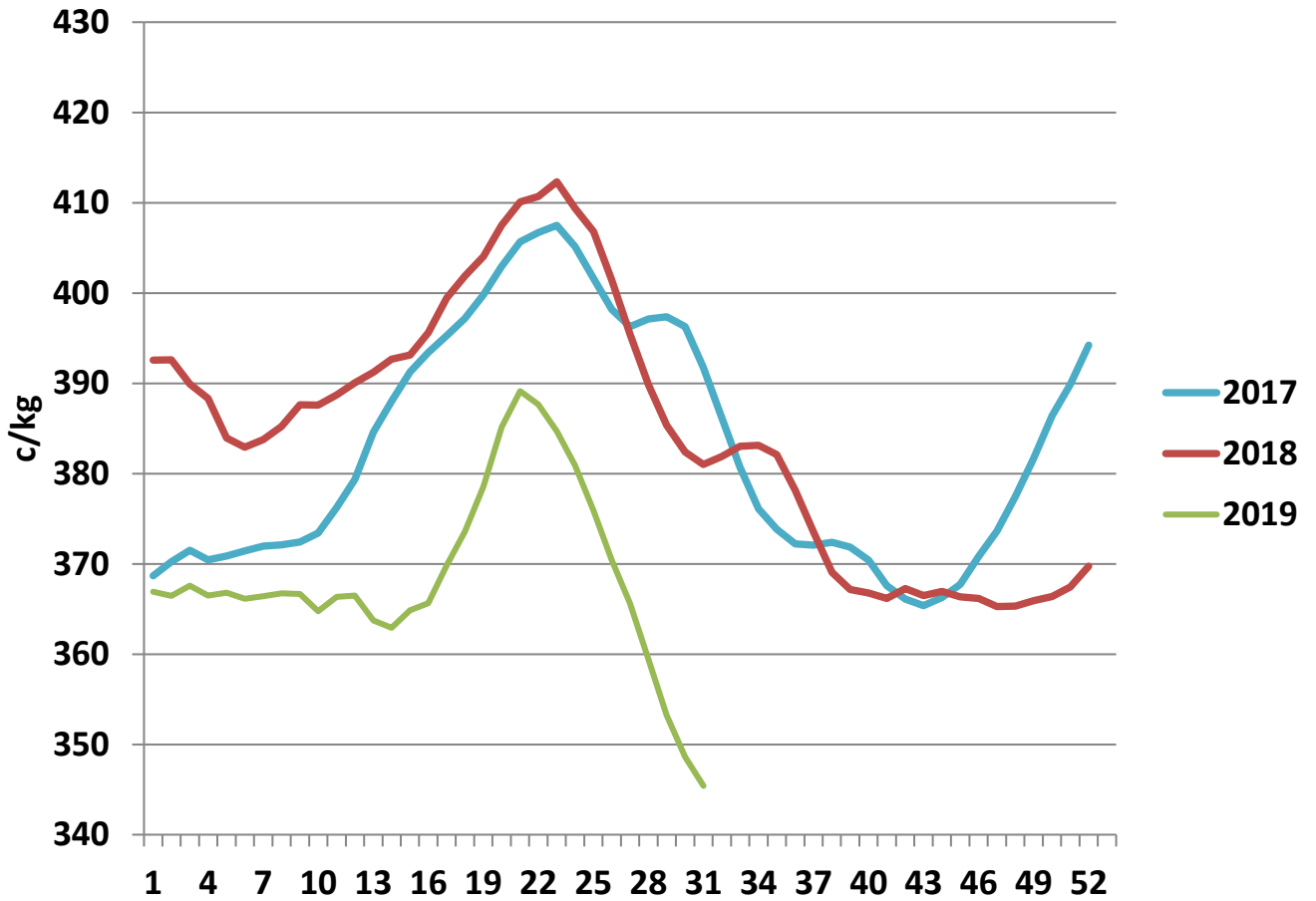
## Irish Deadweight Cattle Prices vs Selected Other Markets, 2019



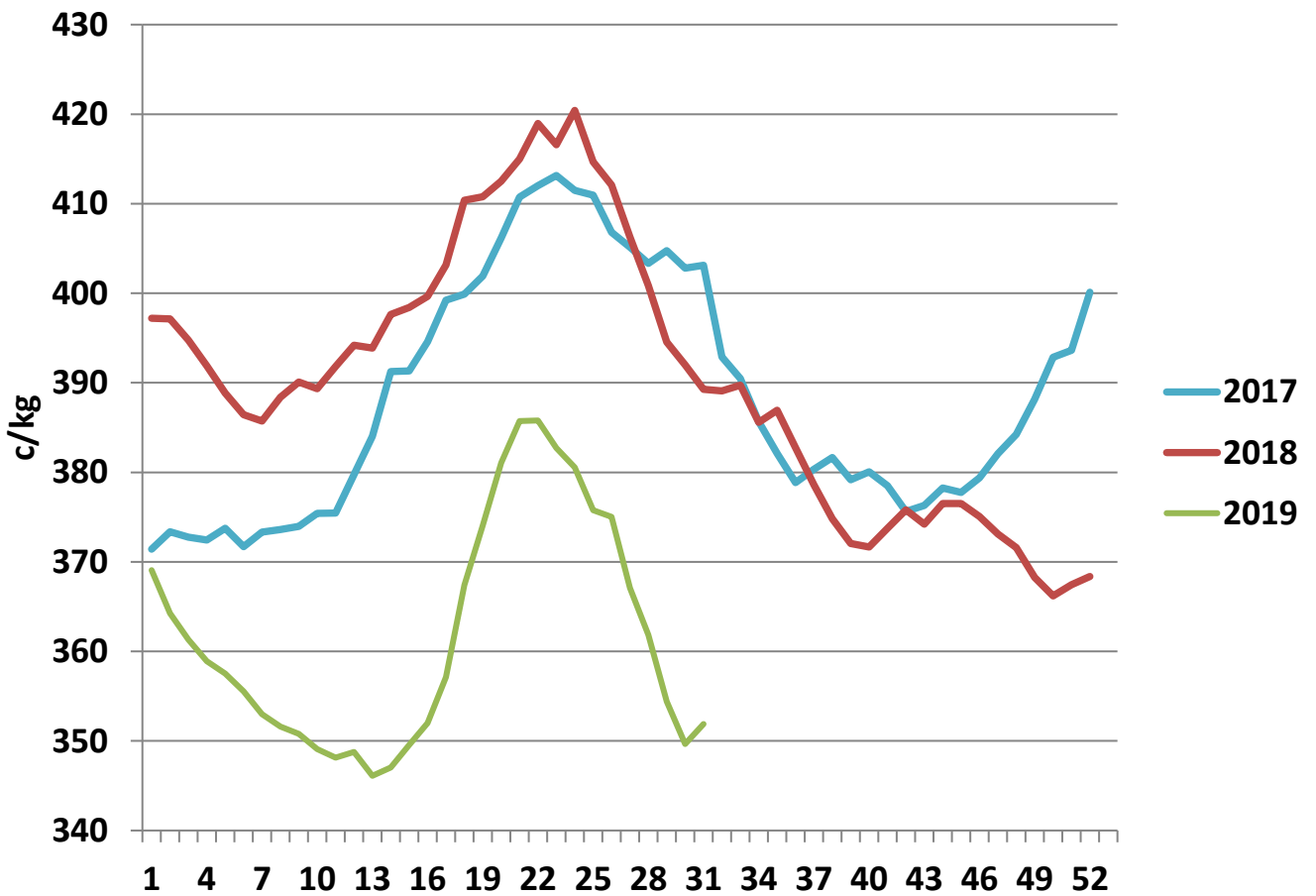
### Livestock Pricing

	Ireland	NI	Britain	EU 14 Average	France	Germany
W/C 22/07/19	348.6	369.07	370.46	360	371	338.7

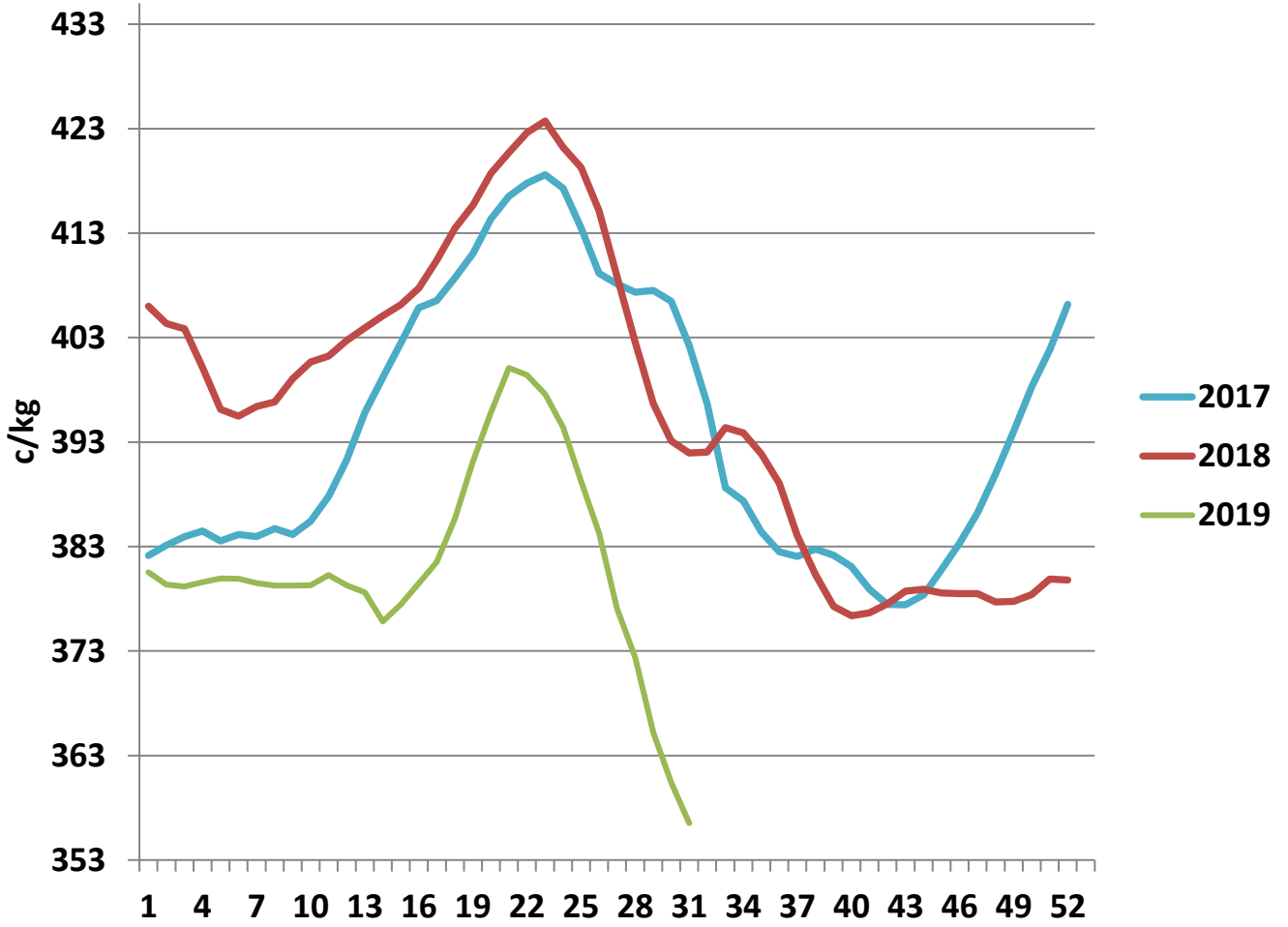
### R3 Steer prices ex. VAT



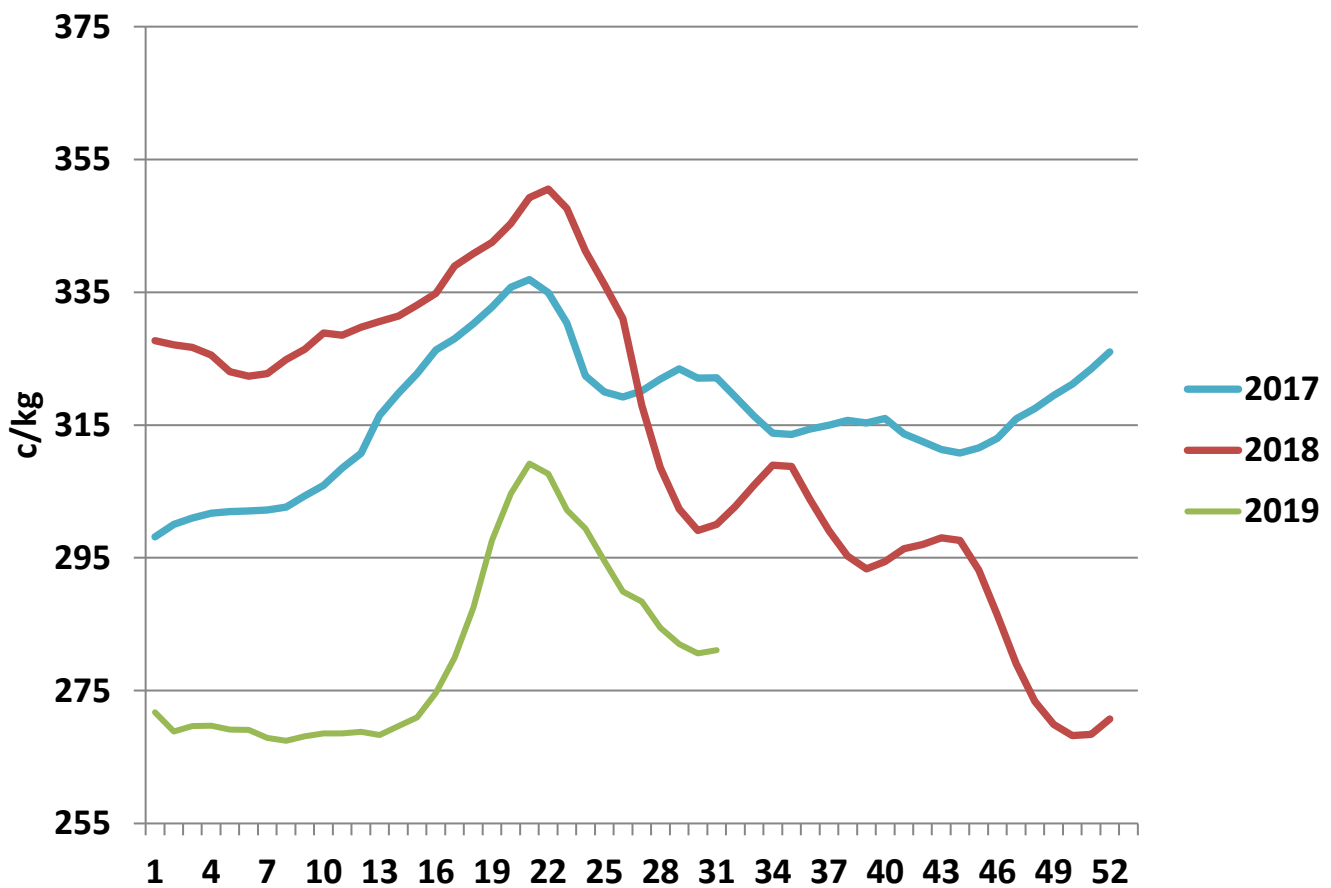
### U3 Young Bull prices ex. VAT



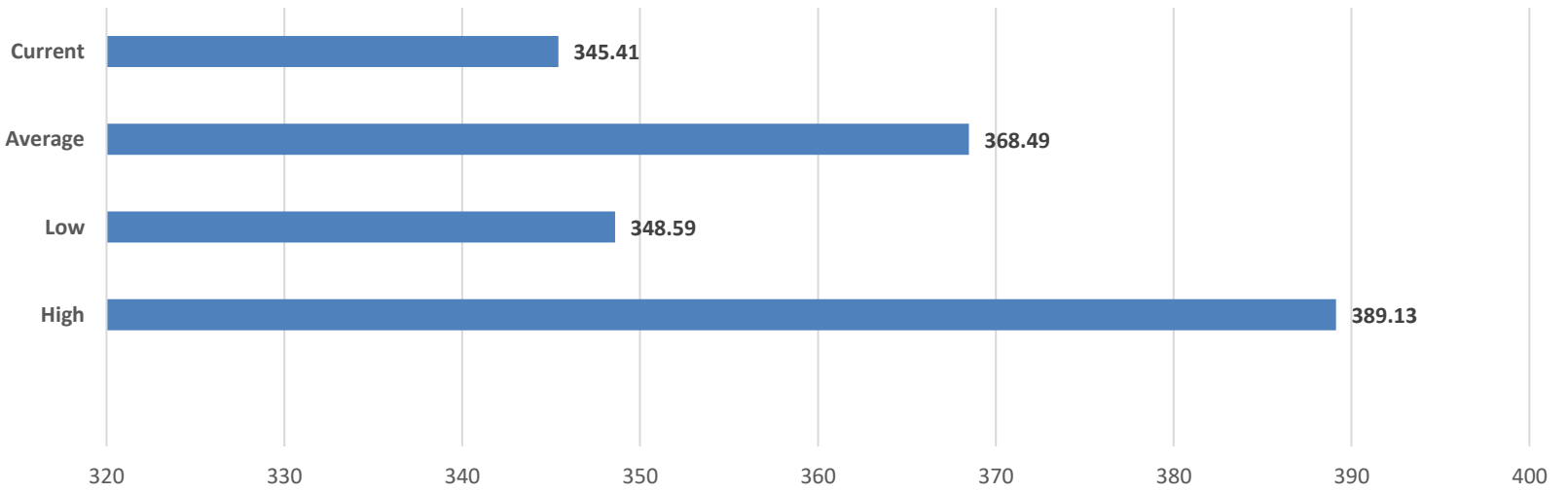
### R3 Heifer prices ex. VAT



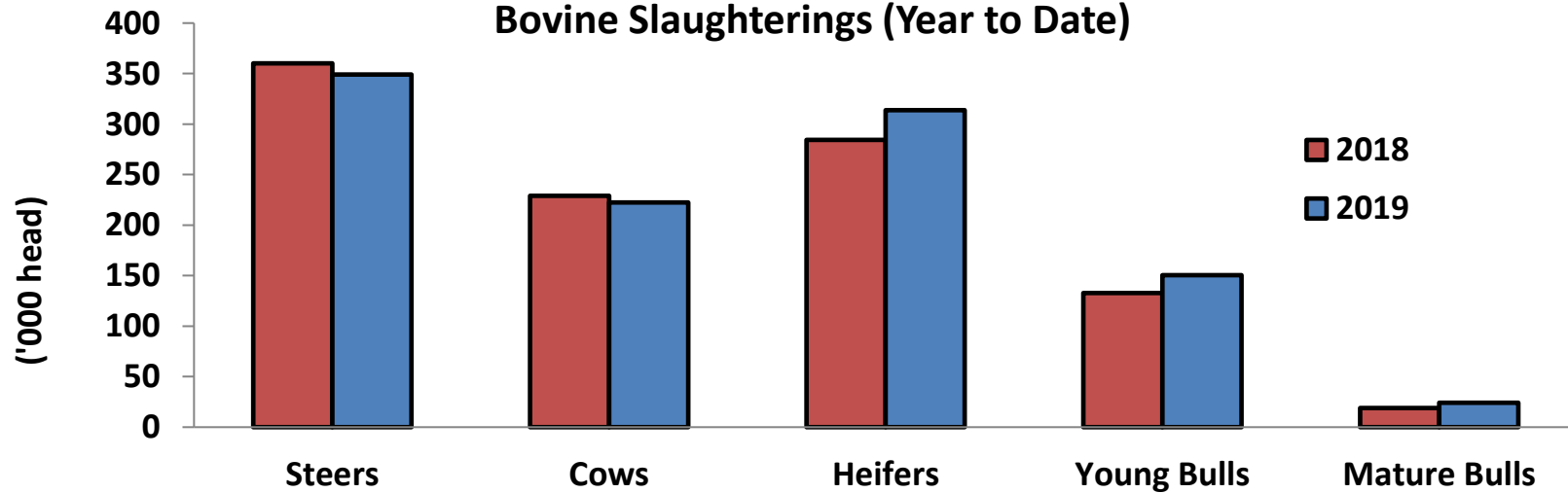
### O4 Cow prices ex. VAT



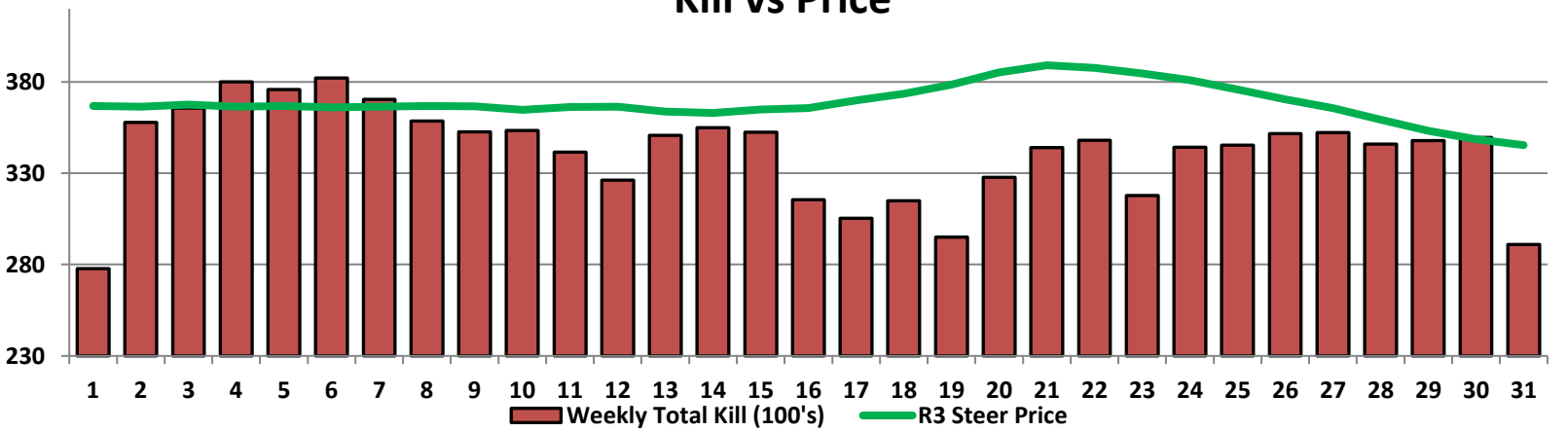
### 6 Month R3 Steer Statistics



### Bovine Slaughterings (Year to Date)



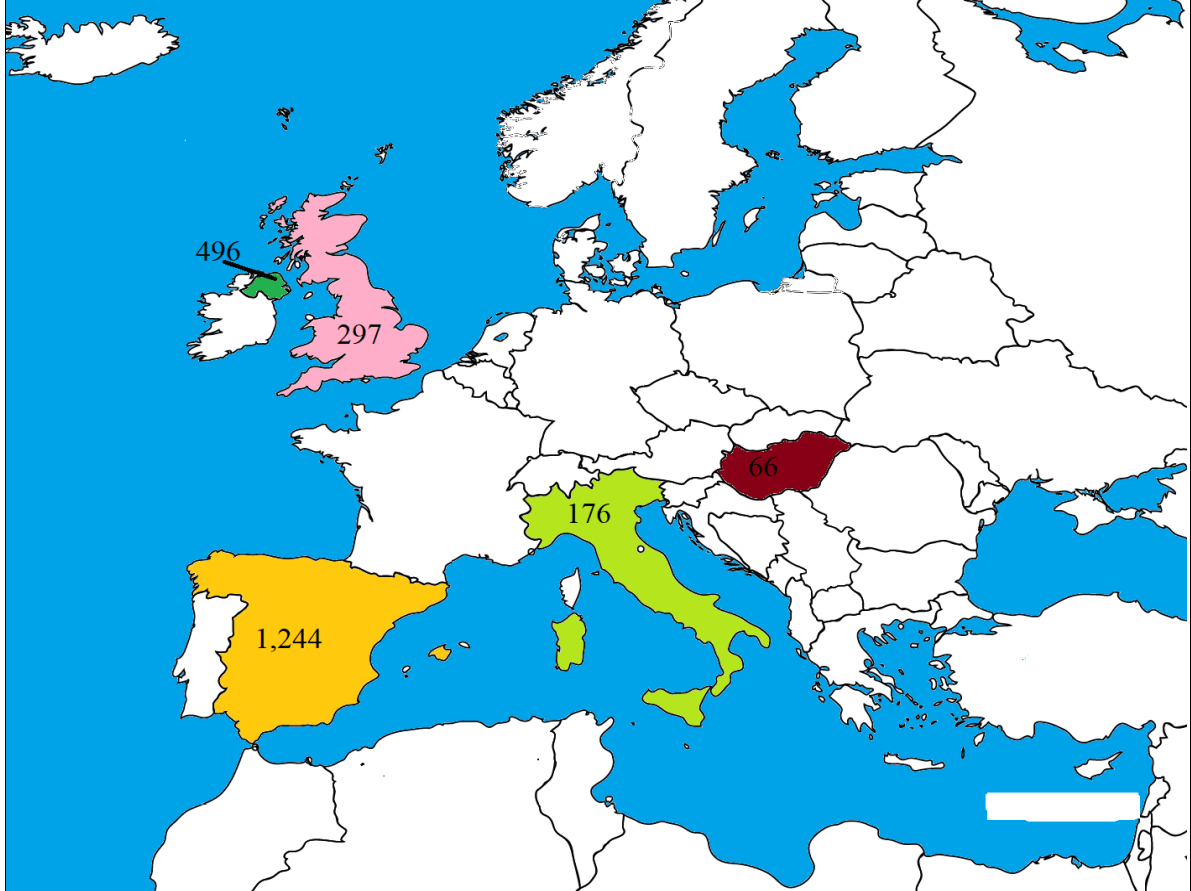
### Kill vs Price



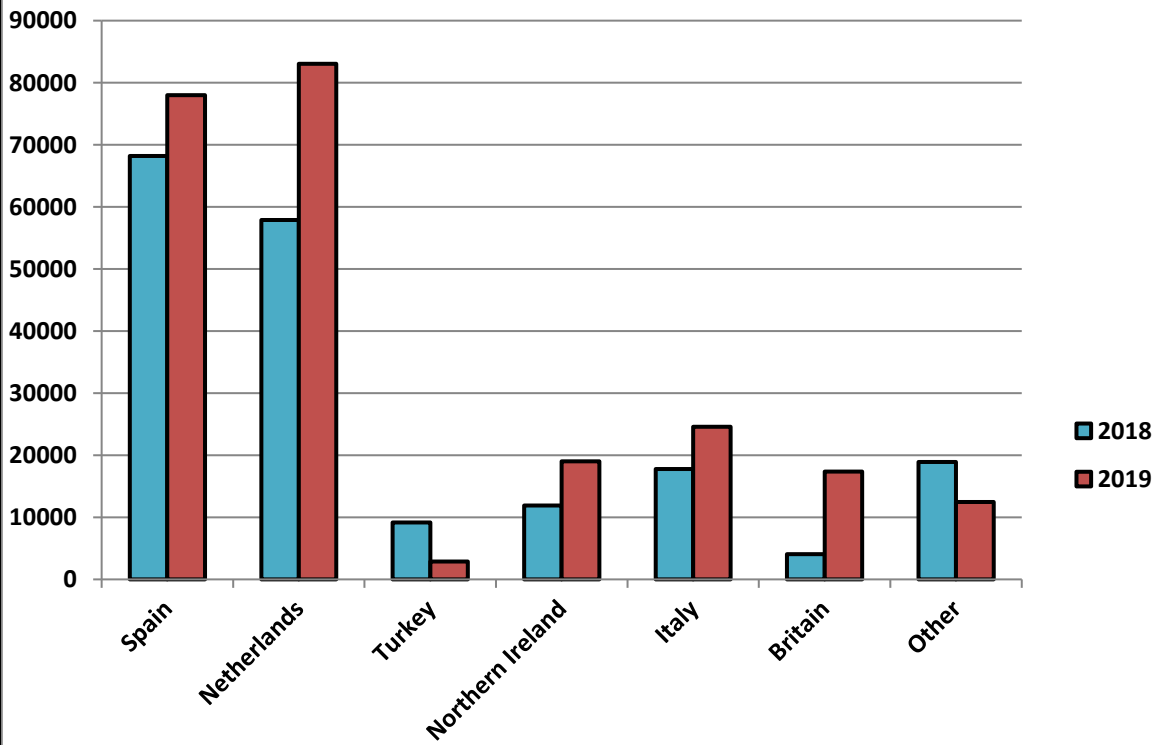




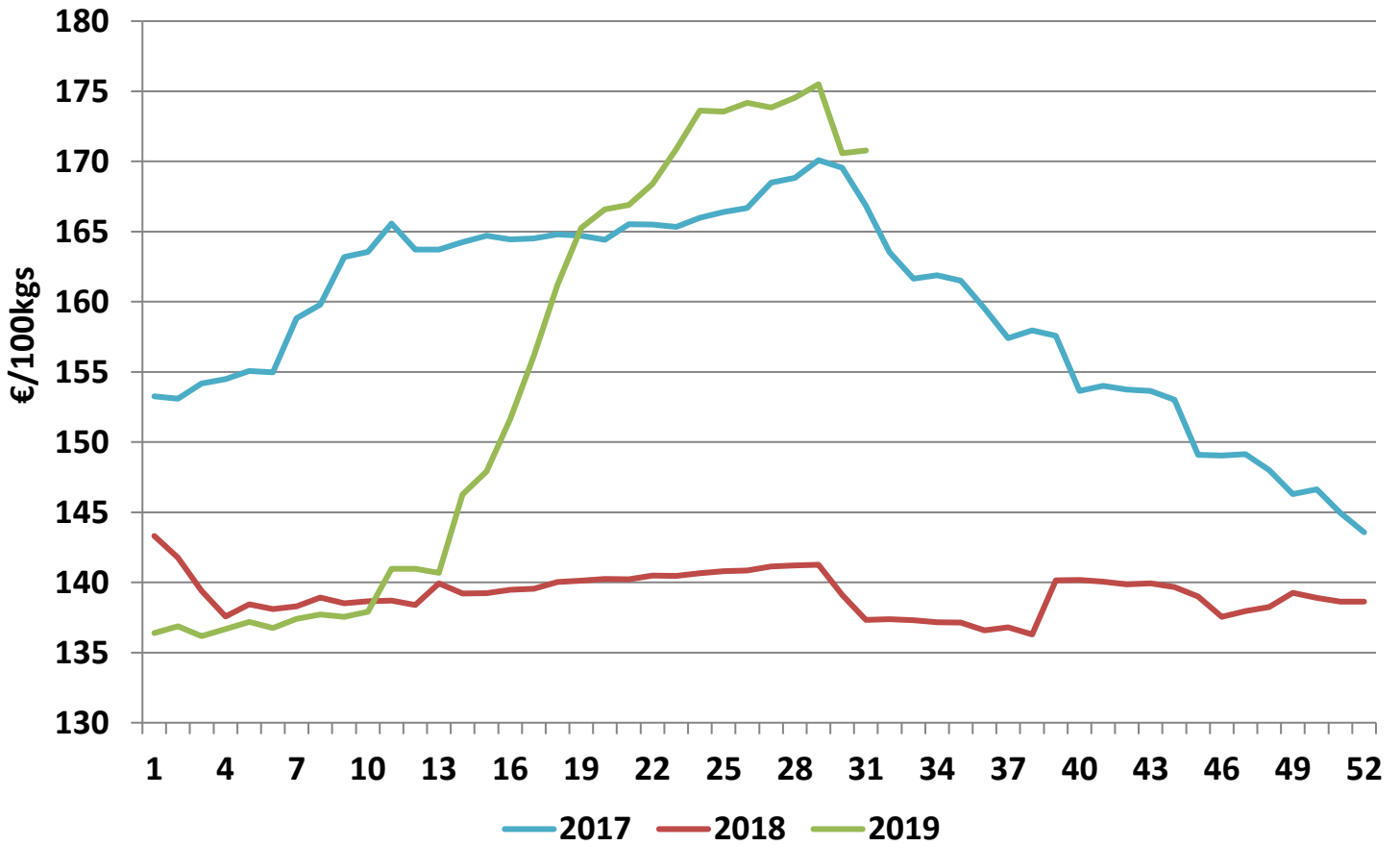
Cattle exported, w/c 22/07/19



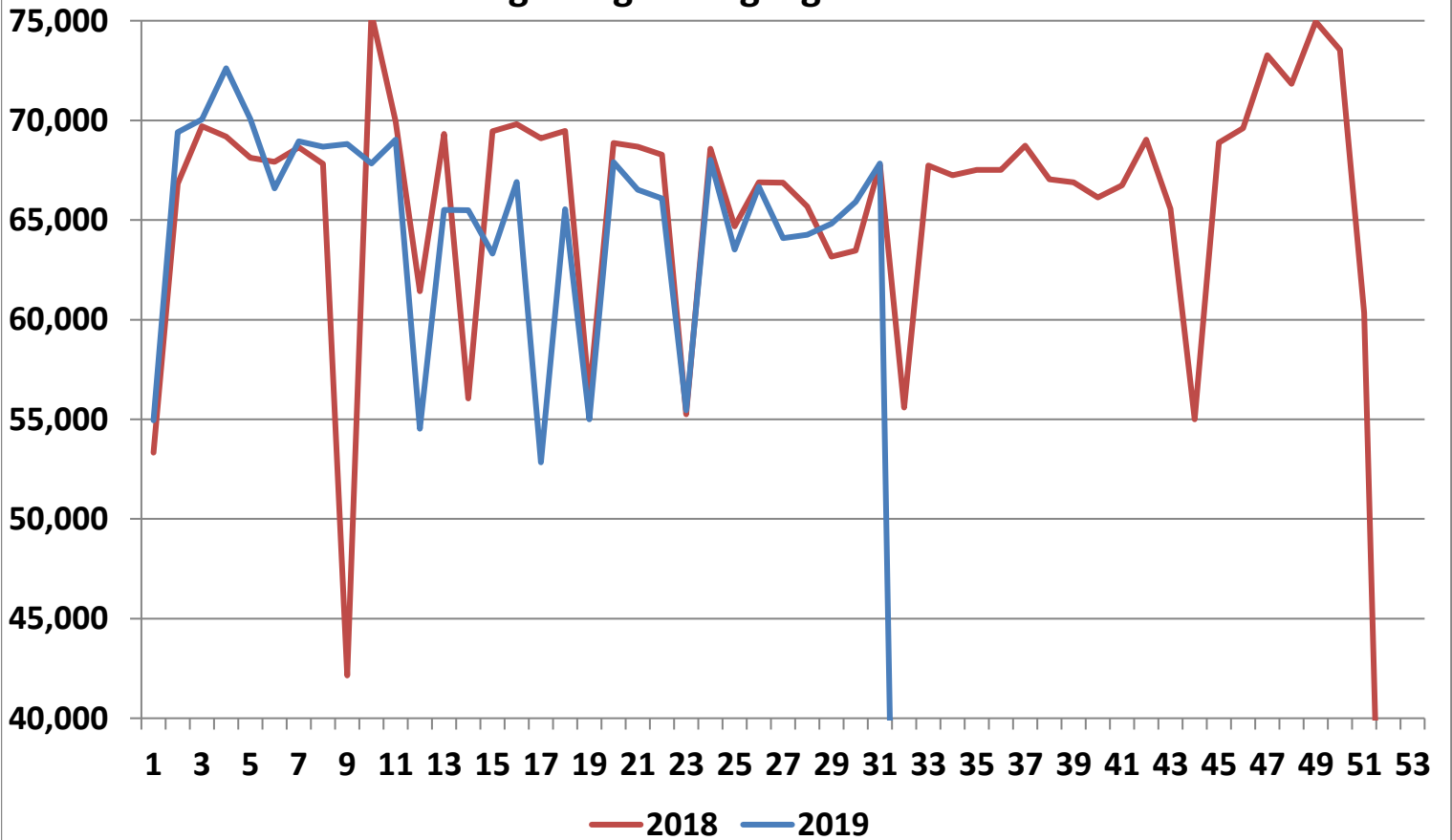
Cumulative cattle export figures, 2019



### Average Grade E Pig Price



### Pig Slaughtering Figures



**Sheepmeat Information for Week 31**

NOTE: EU PRICES  
ARE PROVISIONAL AT  
THE TIME OF  
PUBLICATION AND  
MAY NOT BE  
REFLECTIVE OF THE  
CURRENT PERIOD

Irish Prices €/100 kg	2019	2018	Change
Ave Factory Price	429.83	475.10	-9.5%
Ave Mart Price	380.89	392.11	-2.9%
National Ave Price	415.15	450.2	-7.8%
YTD Ave	483.86	514.93	-6.0%

Slaughterings	2019	2018	Change
Weekly	52,802	63,326	-17%
YTD	1,544,423	1,646,949	-6%

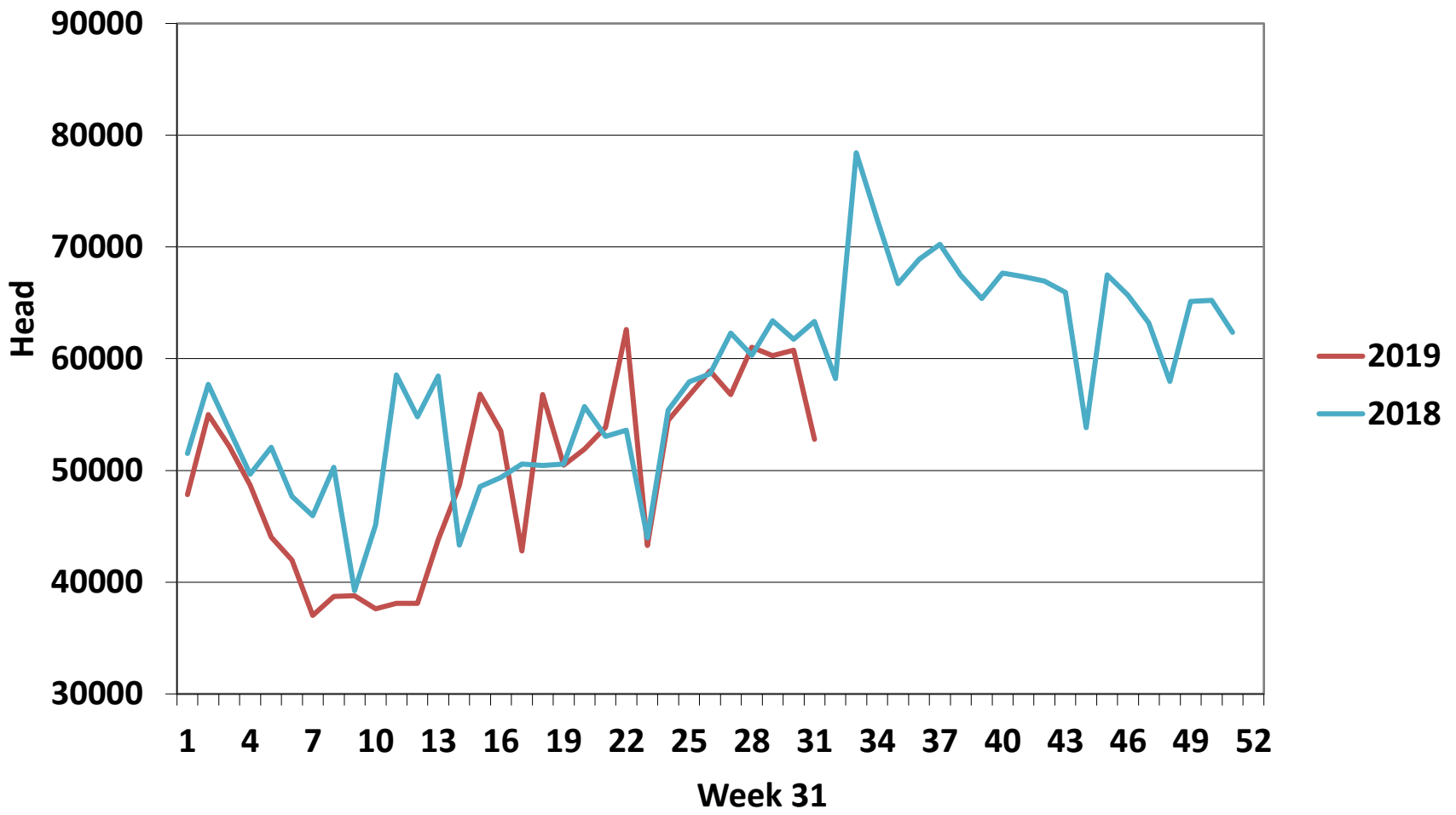
EU Market Rates Heavy Lambs	€/100kg	% of Community Price
Belgium	490.8	105%
Denmark	512.7	109%
Germany	508.2	108%
Spain	475.3	101%
France	590.0	126%
Croatia	537.5	115%
Ireland	432.4	92%
Italy	542.0	116%
Cyprus	457.0	97%
Latvia	435.6	93%
Lithuania	433.5	92%
Netherlands	514.1	110%
Austria	553.0	118%
Poland	441.0	94%
Romania	240.5	51%
Finland	391.4	83%
Sweden	486.5	104%
Northern Ireland	388.5	83%
Great Britain	446.2	95%
United Kingdom	442.0	94%
Community	469.2	100%

**REPORT ON SLAUGHTERING AT SHEEP EXPORT PREMISES  
WEEK 31**

CATEGORY	2019		2018		DIFFERENCE	
	Weekly	Cumulative	Weekly	Cumulative	Weekly	Cumulative
Lambs/Hoggets	142	736,975	313	827,823	-171	-90,848
Spring Lambs	42,906	582,227	50,536	540,728	-7,630	41,499
Ewes and Rams	9,709	224,925	12,477	278,271	-2,768	-53,346
Light Lambs	45	296	-	127	45	169
<b>TOTAL</b>	<b>52,802</b>	<b>1,544,423</b>	<b>63,326</b>	<b>1,646,949</b>	<b>-10,524</b>	<b>-102,526</b>



### Weekly Sheep Slaughterings



### Ave. Price €/100 kg for Sheepmeat

