

Meat Market Report

12/08/19 - 18/08/19

Week

33



**An Roinn Talmhaíochta,
Bia agus Mara**

Department of Agriculture,
Food and the Marine

MARKET SUMMARY

Beef

Deadweight Prices c/100Kg (Including VAT)

	U3	U4	R3	R4	O3	O4	P+
Steers	373.5	372.1	362.8	362.4	344.4	345.1	321.4
Heifers	385.0	381.7	372.5	371.4	357.0	354.4	330.0
Young Bulls	360.6	358.1	349.3	342.8	326.6	338.1	307.5
Cows			319.4	317.9	299.5	299.1	290.0

Liveweight Prices

*Bull Calf Average Price	€172.2 per head (Excluding VAT)
**Young Store Average Price	€199.0 per 100kg (Excluding VAT)
***Yearling (male & female) Price	€182.0 per 100kg (Excluding VAT)

* Aged 8-28 days ** Aged 180-364 days, Male & Female ***age 365-730 days

Slaughterings

38,010 cattle slaughtered this week, of which steers were 17,585 (46%), heifers 10,173 (27%), young bulls 2,949 (8%) and cows 6,558 (17%). Total YTD slaughter is 1,112,783 compared to 1,089,814 in 2018, a 2% increase.

Live Trade

1,814 cattle were exported in the week commencing 05/08/2019*; 1,151 to EU (Except NI). Live exports for 2019 amount to 238,418 compared to 193,055 in 2018, up 23% on 2018 levels.

*This data is provisional and subject to revision.

The next meeting of the Management Committee for the Common Organisation of Agricultural Markets (Animal Products Sector) is 29th August 2019

CONTENTS:

Page 2: Market Summary Beef
 Page 3: Market Summary Other Meats
 Page 4: Beef Price and Slaughter Summary
 Page 5: Comparative Beef Prices
 Page 6: Steer and Young Bull Price
 Page 7: Heifer and Cow Graphs
 Page 8: Price and Slaughter Graphs
 Page 9: Liveweight Beef Graphs

Page 10: Beef Export Maps
 Page 11: Beef Export Info
 Page 12: Pig price and slaughter graphs
 Page 13: Sheep prices and slaughter
 Page 15: Sheep price and slaughter graphs

MARKET SUMMARY

Pigmeat

Grade E Pig
Prices (Ex.
VAT)

The Grade E Pig price for week commencing 12/08/2019 was €170.93 per 100Kg compared to €137.30 in the same week last year, which represents a 24% increase.

Slaughtering

63,892 pigs were slaughtered in week 33 of which 2,020 were sows. The cumulative figure for pig slaughterings in 2019 is 2,138,255 which is a 1% decrease with the same point last year.

Sheepmeat

Sheepmeat
Prices (Ex.
VAT)

The national average price for the week commencing 12/08/2019 was €429.03 per 100Kg, a decrease of 4.1% over the same week last year.

Slaughtering

66,960 sheep were slaughtered at sheep export premises the week commencing 12/08/2019, compared to 78,428 in the same week of 2018. Sheep slaughterings for 2019 are 7% down on 2018 at 1,661,938 head.

Live Trade

Total live exports to European Countries stood at 20,769 head to the end of 2018.

Poultry

Slaughtering

Cumulative poultry slaughterings for 2019* stand at 66,904,298 birds at the end of week 33, up 8% compared to the same period last year.

*Latest Figures are provisional and subject to change

Dead Weight Prices	W/C	W/C	Same week 2018	% change prev week	% change 2018
	12/08/19	05/08/19	13/08/18		
Steers (R3) (c/kg)	344.2	345.5	383.0	-0.4%	-10.1%
Heifers (R3) (c/kg)	353.4	356.2	394.4	-0.8%	-10.4%
Young Bulls (U3) (c/kg)	342.2	351.4	389.7	-2.6%	-12.2%
Cows (04) (c/kg)	283.8	285.0	306.0	-0.4%	-7.3%

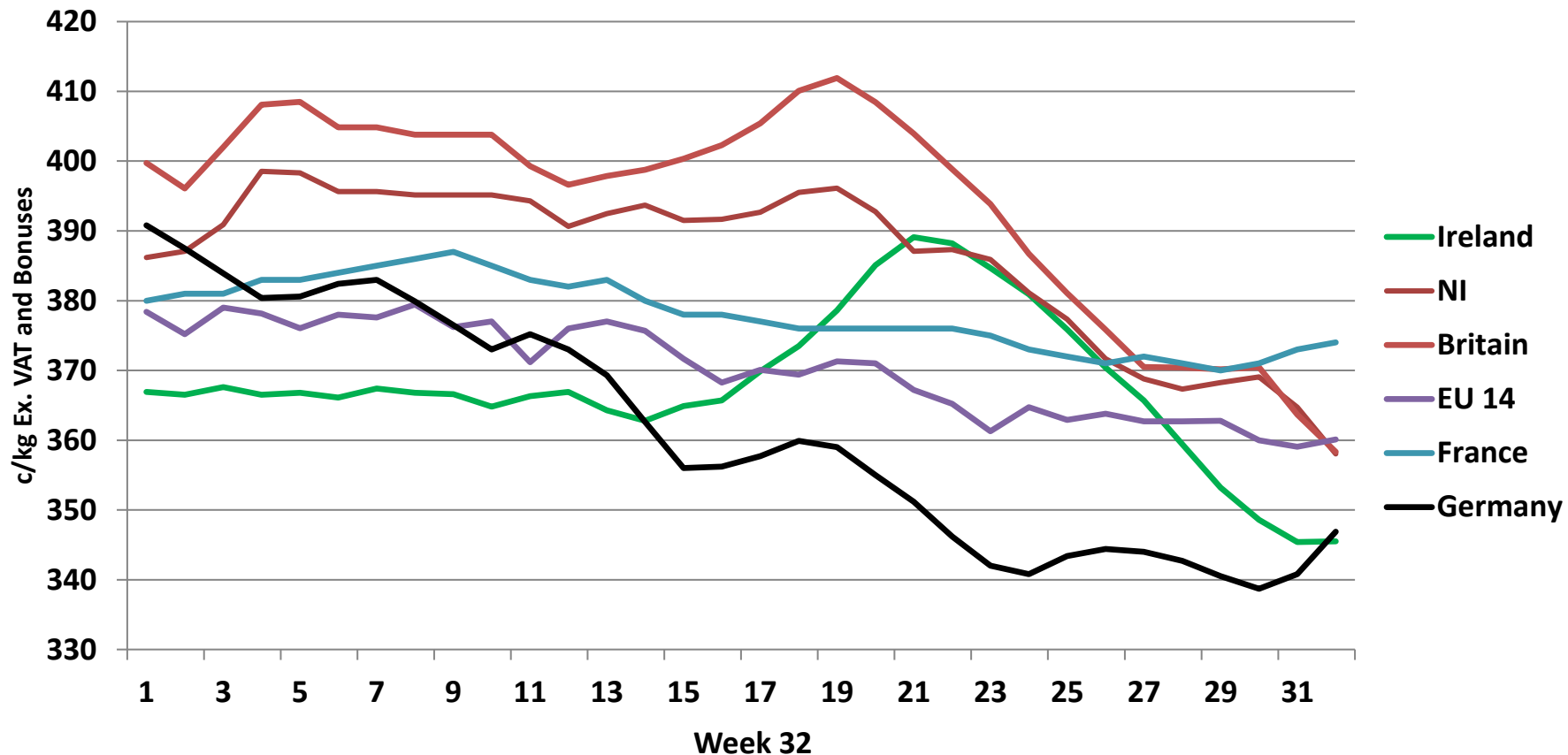
Live Weight Prices	W/C	W/C	Same week 2018	% change previous week	% change 2018
	12/08/19	05/08/19	13/08/18		
Yearlings (Male) (Aged 365 - 730 days) - (€/100Kg)	180	183	189	-1.6%	-4.8%
Yearlings (Female) (Aged 365 - 730 days) - (€/100Kg)	184	185	192	-0.5%	-4.2%
Young Stores (Male & Female) (Aged 180 - 364 days) - (€/100Kg)	199	202	222	-1.5%	-10.4%
Bull Calf (€/head) Dairy	149.7	145.6	127.5	2.8%	17.4%
Bull Calf (€/head) Beef	194.6	222.9	216.5	-12.7%	-10.1%
Bull Calf (€/head) Average	172.2	184.3	172.0	-6.6%	0.1%

Slaughter Figures	% of weekly figures	W/C	Same week 2018	Year to Date		Change 2019 v 2018	
		12-Aug-19		2019	2018	Head	%
Steers	46.3%	17,585	13,922	372,677	386,749	-14,072	-3.6%
Cows	17.3%	6,558	7,643	231,599	243,675	-12,076	-5.0%
Heifers	26.8%	10,173	8,474	328,221	300,456	27,765	9.2%
Young Bulls	7.8%	2,949	2,117	155,024	138,378	16,646	12.0%
Mature Bulls	2.0%	745	856	25,262	20,556	4,706	22.9%
Total	100%	38,010	33,012	1,112,783	1,089,814	22,969	2.1%

821

Live Exports	W/C	Same week	W/C	Year to Date		Change 2019 v 2018	
	5-Aug-19	2018	29-Jul-19	2019	2018	Head	%
Northern Ireland	663	134	543	20,337	10,283	10,054	98%
EU Except NI	1,151	1,378	783	210,182	168,111	42,071	25%
Third Countries	0	552	0	7,899	14,661	-6,762	-
Total	1,814	2,064	1,326	238,418	193,055	45,363	23%
Calves YTD:		190,485		Adult YTD:Cattle		47,804	

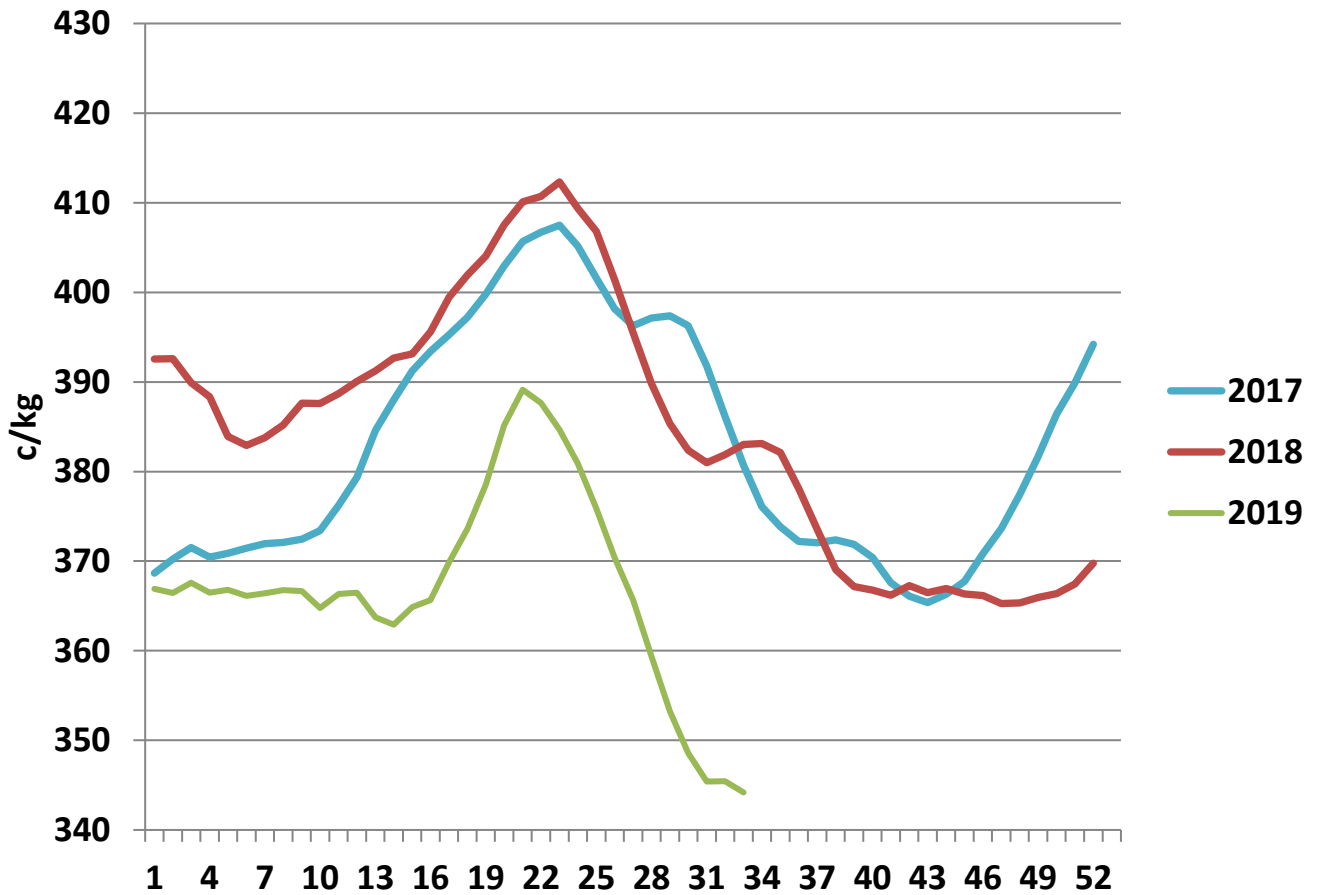
Irish Deadweight Cattle Prices vs Selected Other Markets, 2019



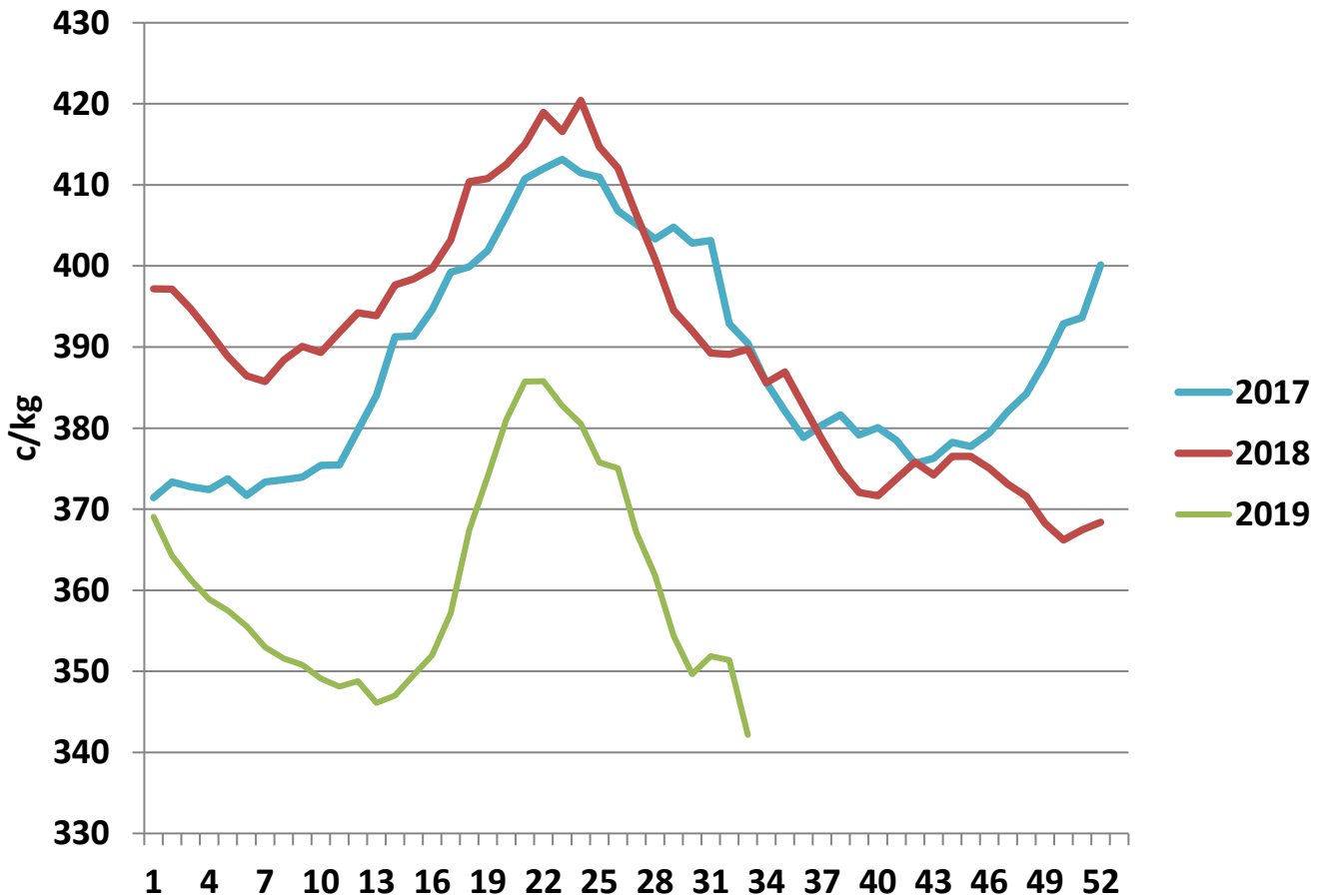
Livestock Pricing

	Ireland	NI	Britain	EU 14 Average	France	Germany
W/C 05/08/19	345.5	358.04	358.33	360.11	374	346.9

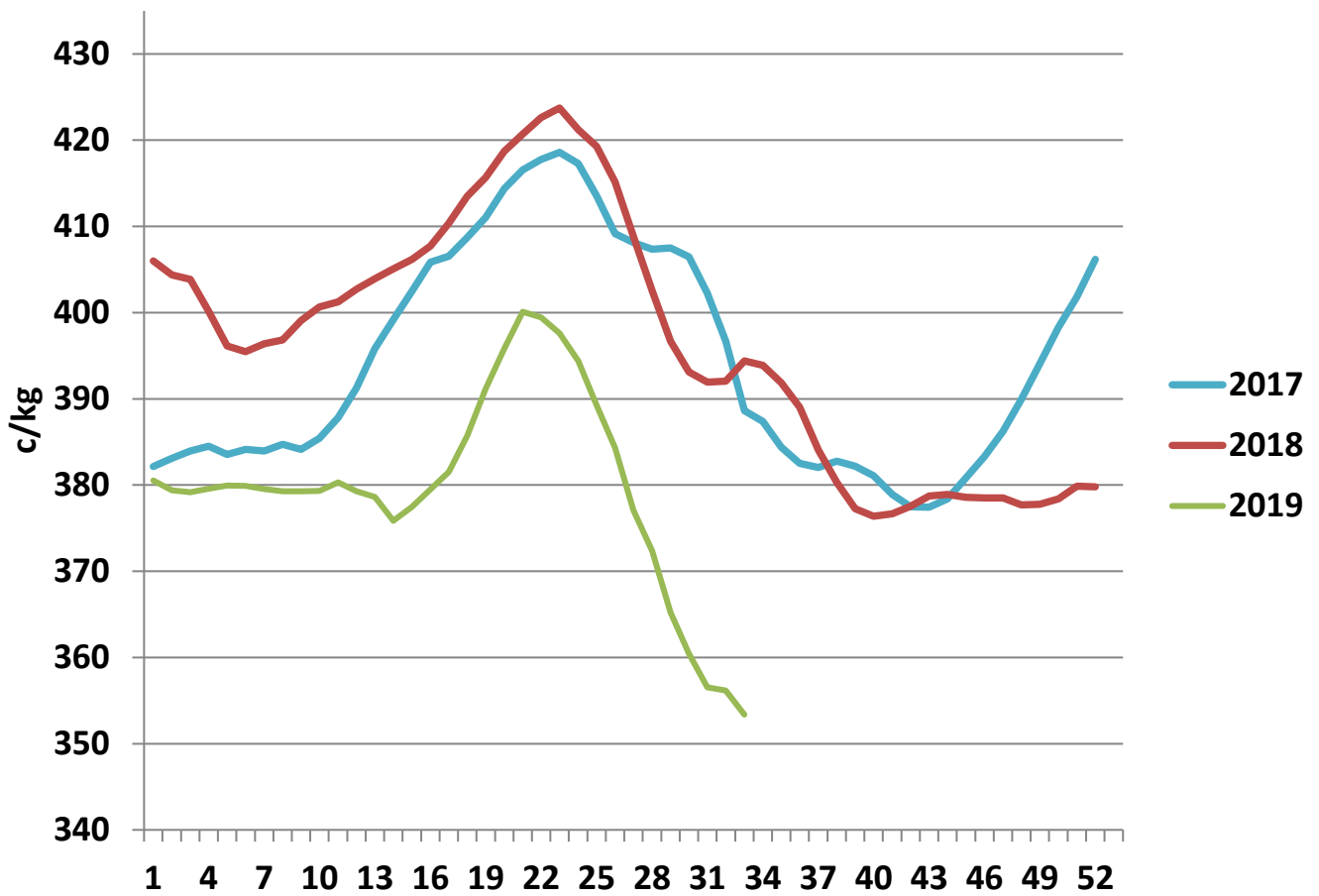
R3 Steer prices ex. VAT



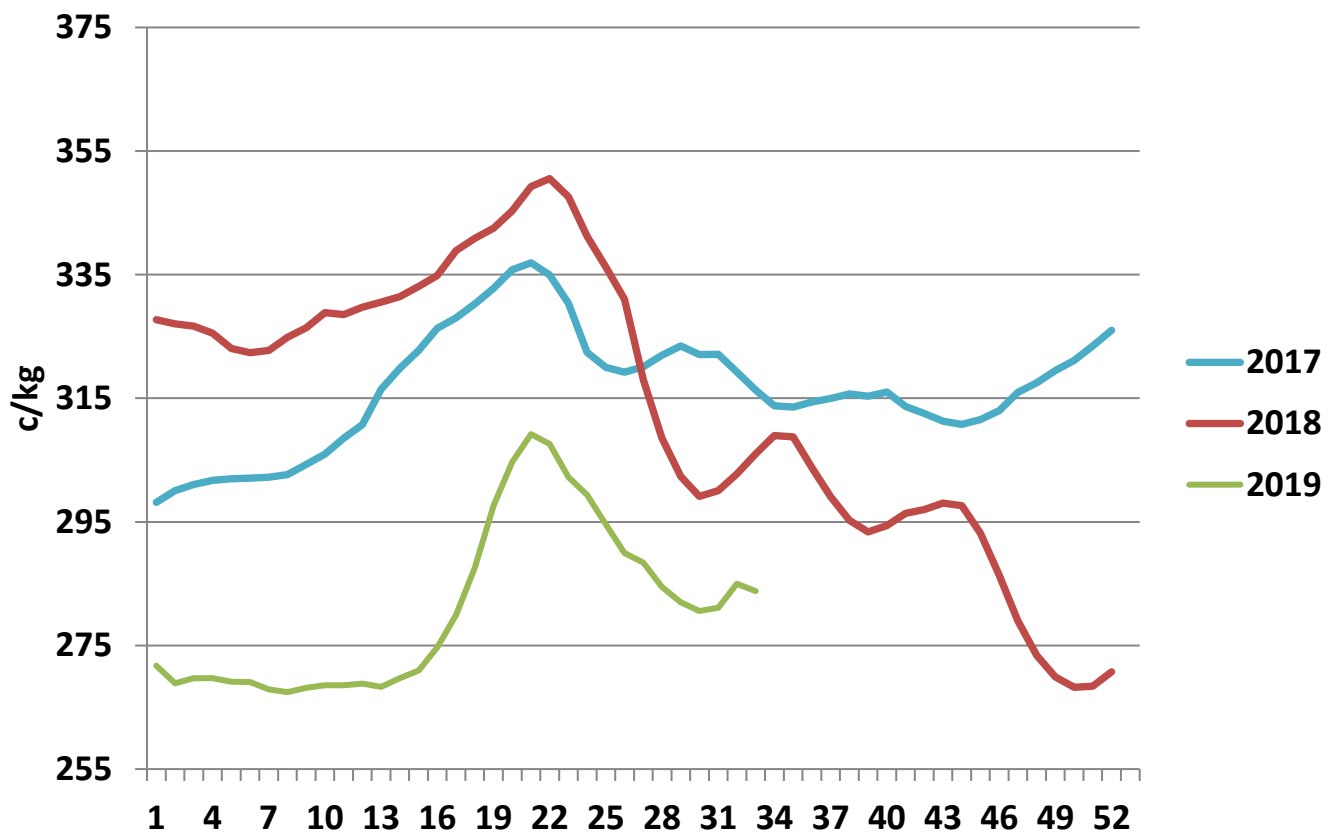
U3 Young Bull prices ex. VAT



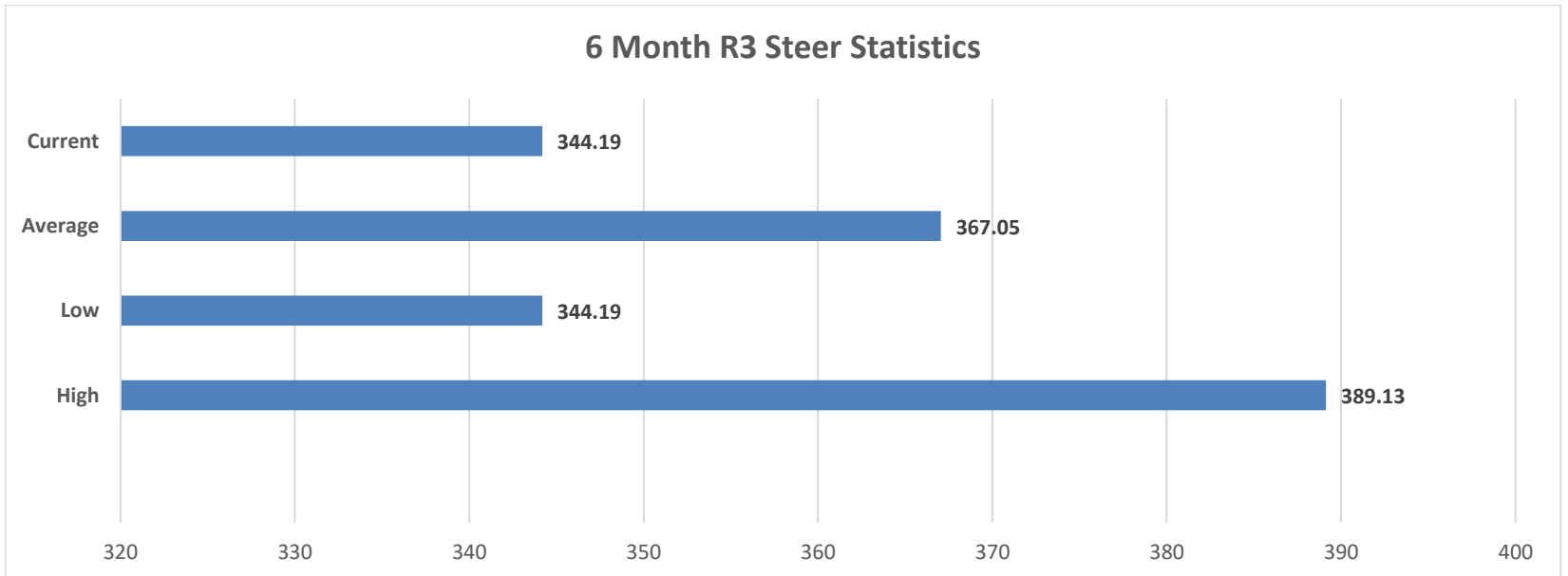
R3 Heifer prices ex. VAT



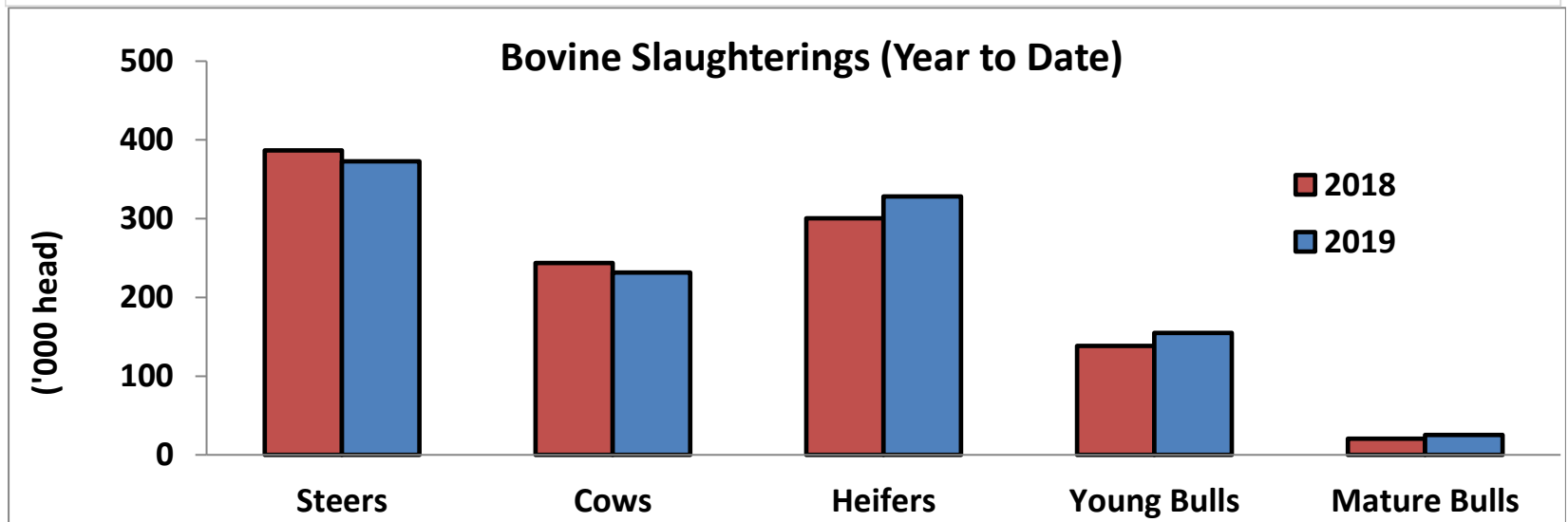
O4 Cow prices ex. VAT



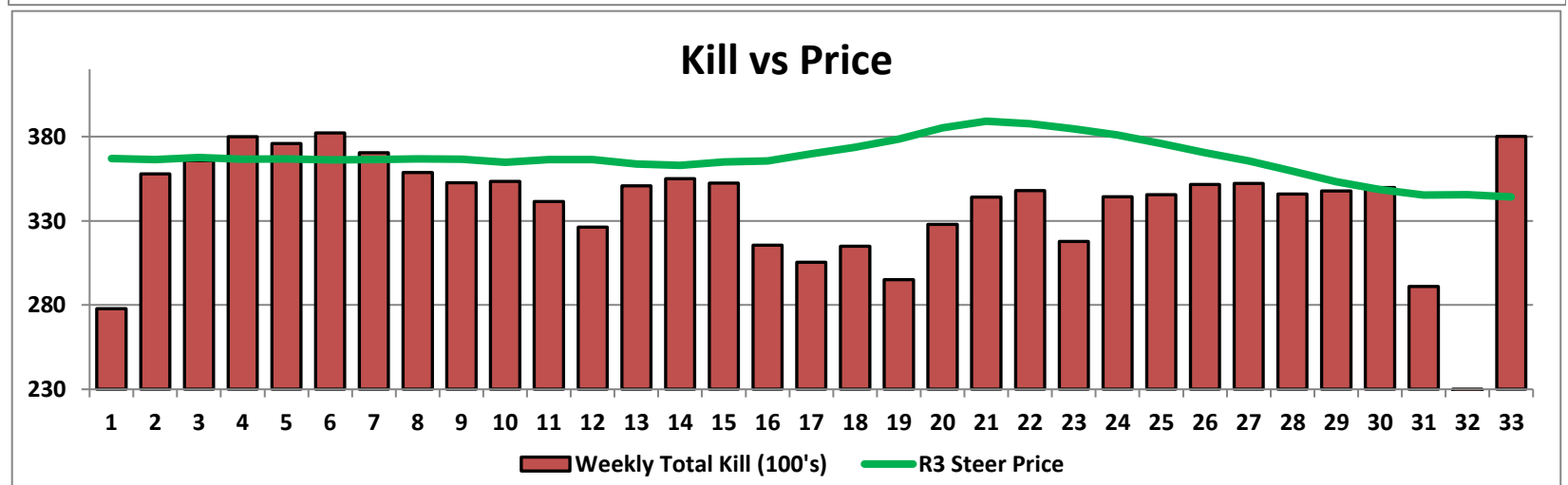
6 Month R3 Steer Statistics



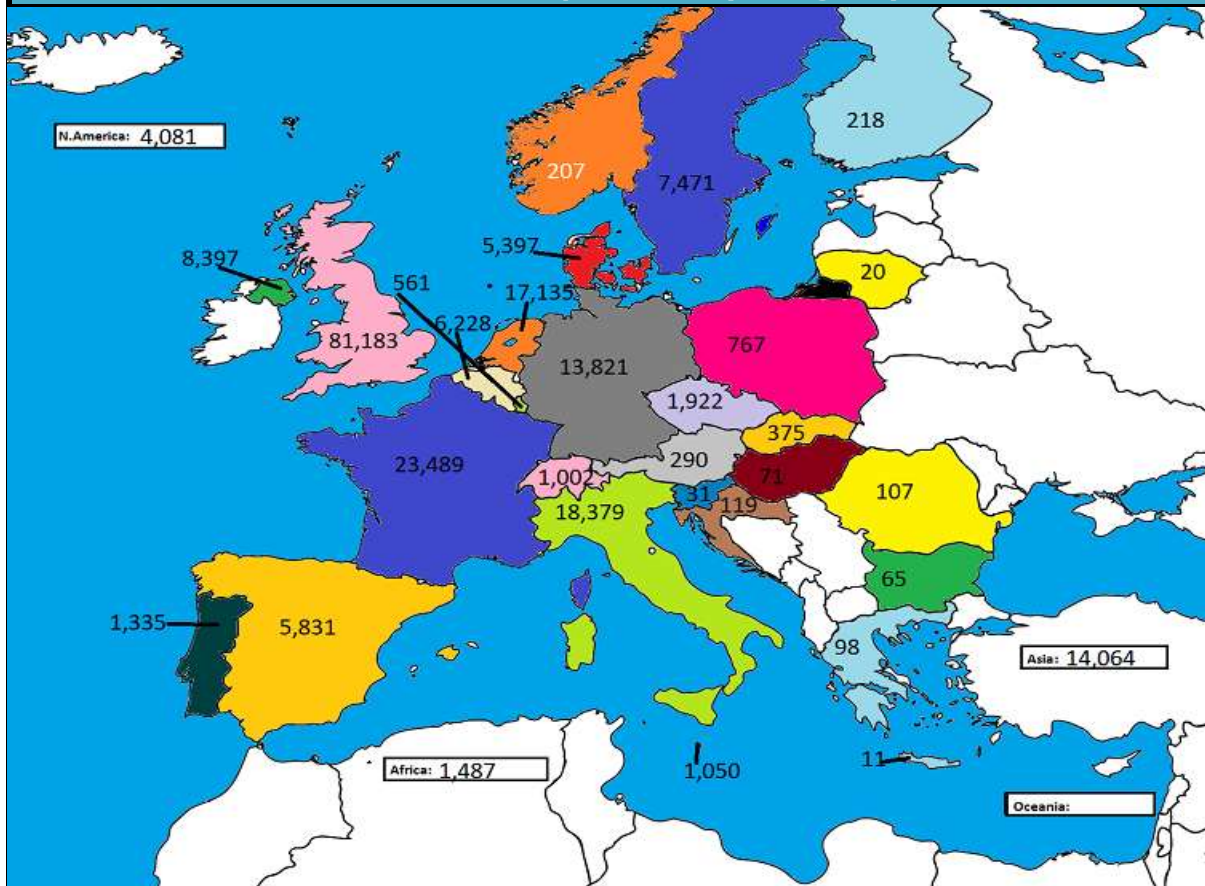
Bovine Slaughterings (Year to Date)



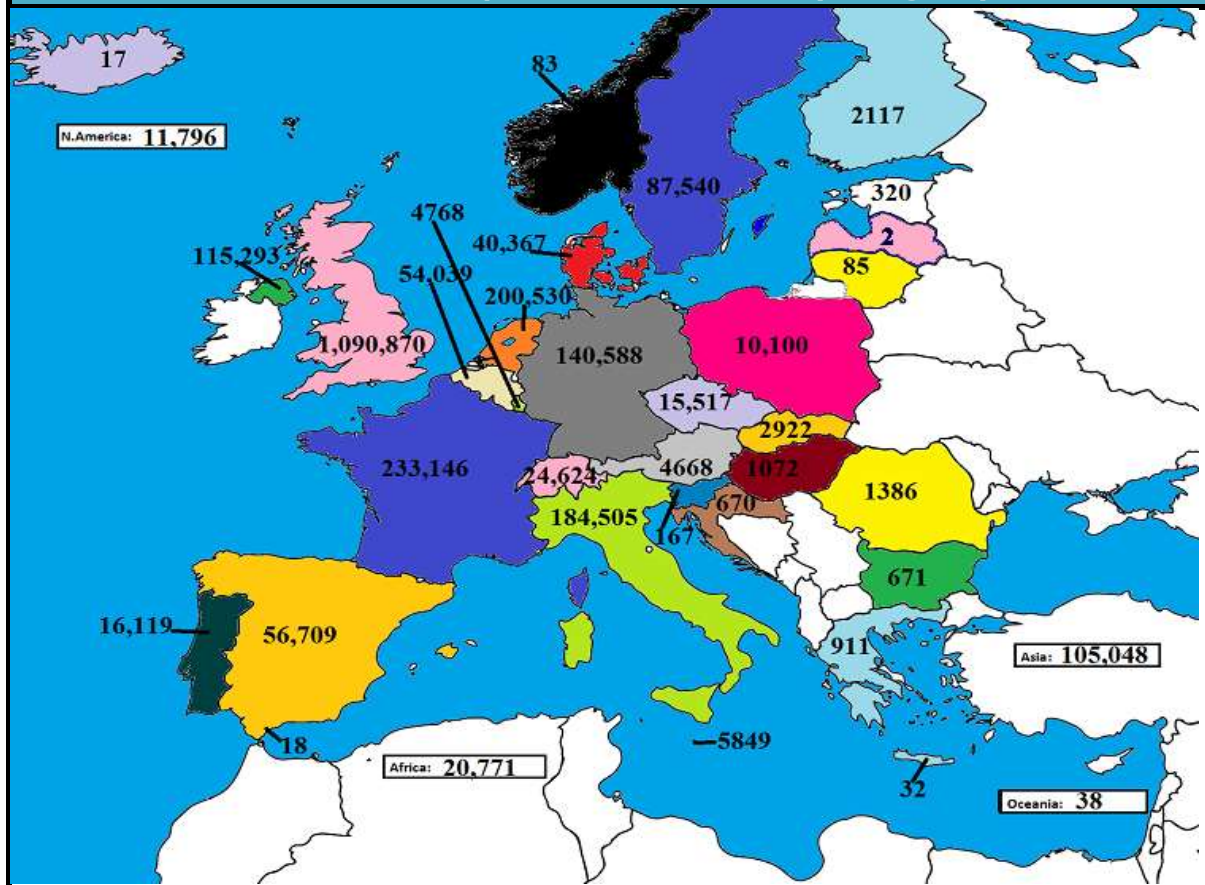
Kill vs Price



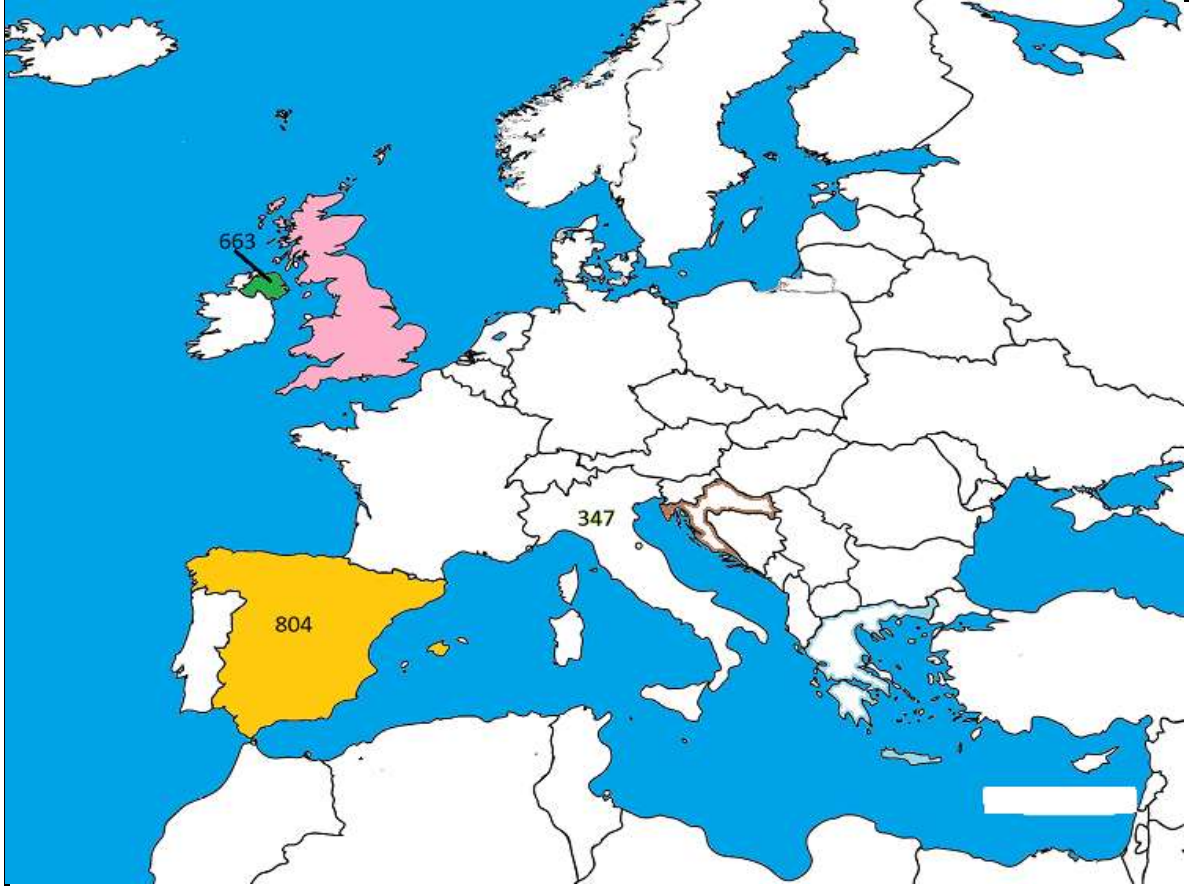
June 2019 Beef exports, €000 (CSO figures)



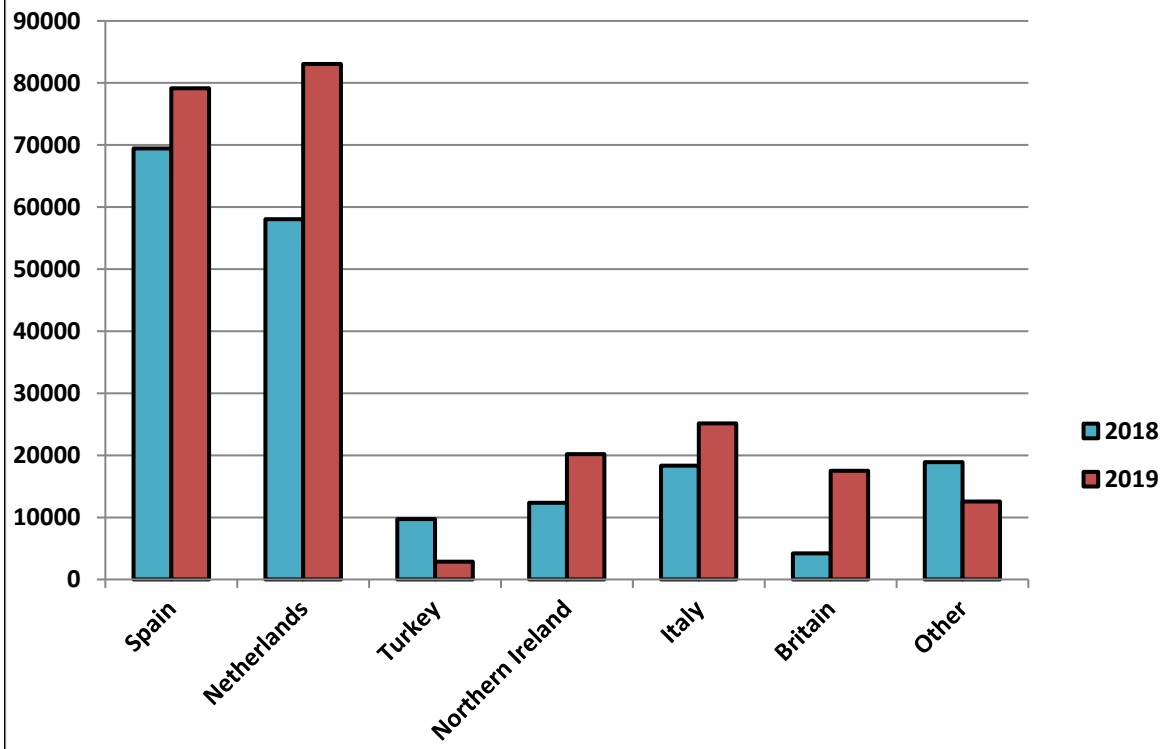
Cumulative beef exports to Dec 2018, €000 (CSO figures)

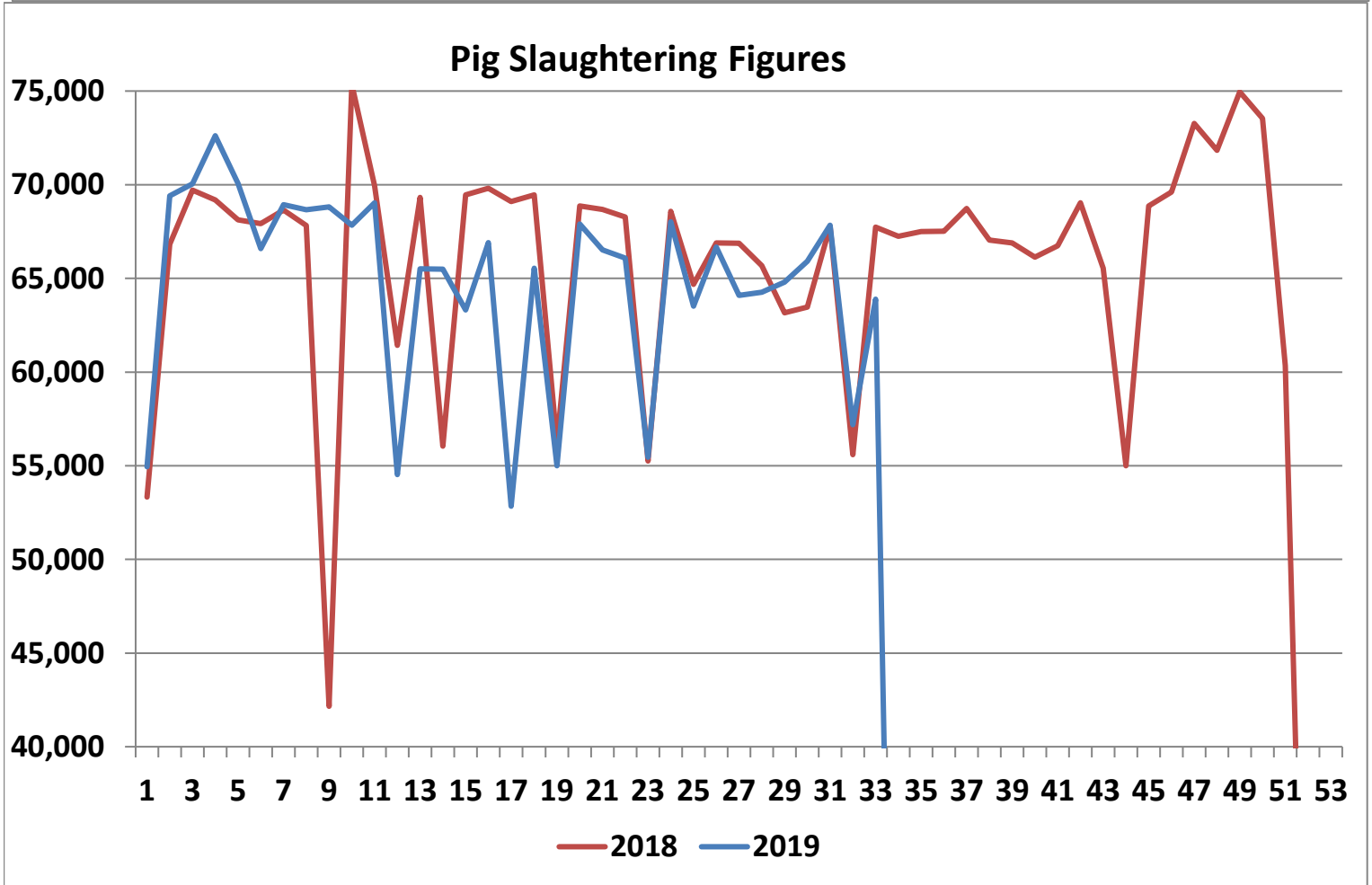
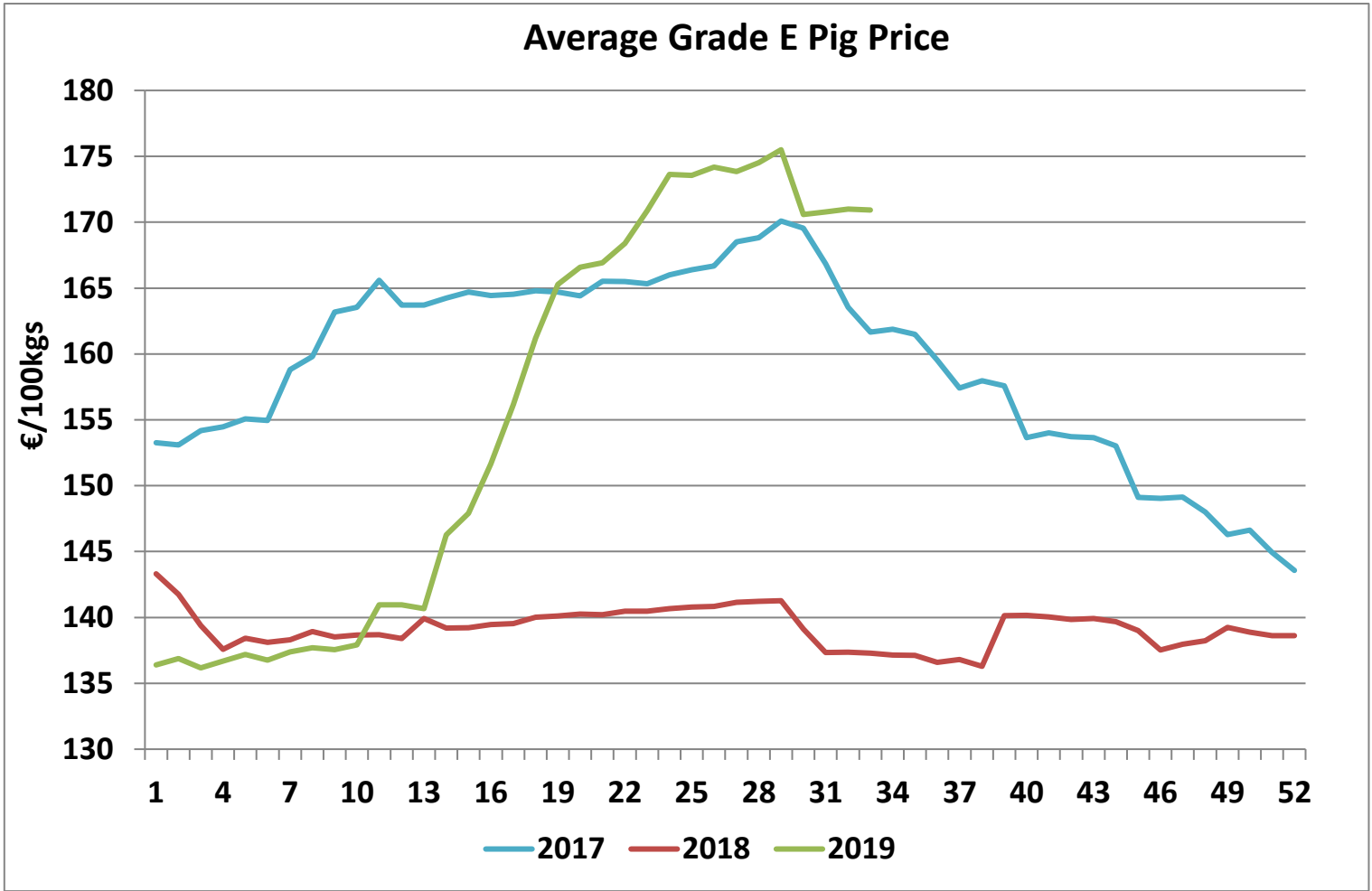


Cattle exported, w/c 05/08/19



Cumulative cattle export figures, 2019





Sheepmeat Information for Week 33

NOTE: EU PRICES
ARE PROVISIONAL AT
THE TIME OF
PUBLICATION AND
MAY NOT BE
REFLECTIVE OF THE
CURRENT PERIOD

Irish Prices €/100 kg	2019	2018	Change
Ave Factory Price	446.96	475.88	-6.1%
Ave Mart Price	387.19	380.33	1.8%
National Ave Price	429.03	447.21	-4.1%
YTD Ave	480.73	512.75	-6.2%

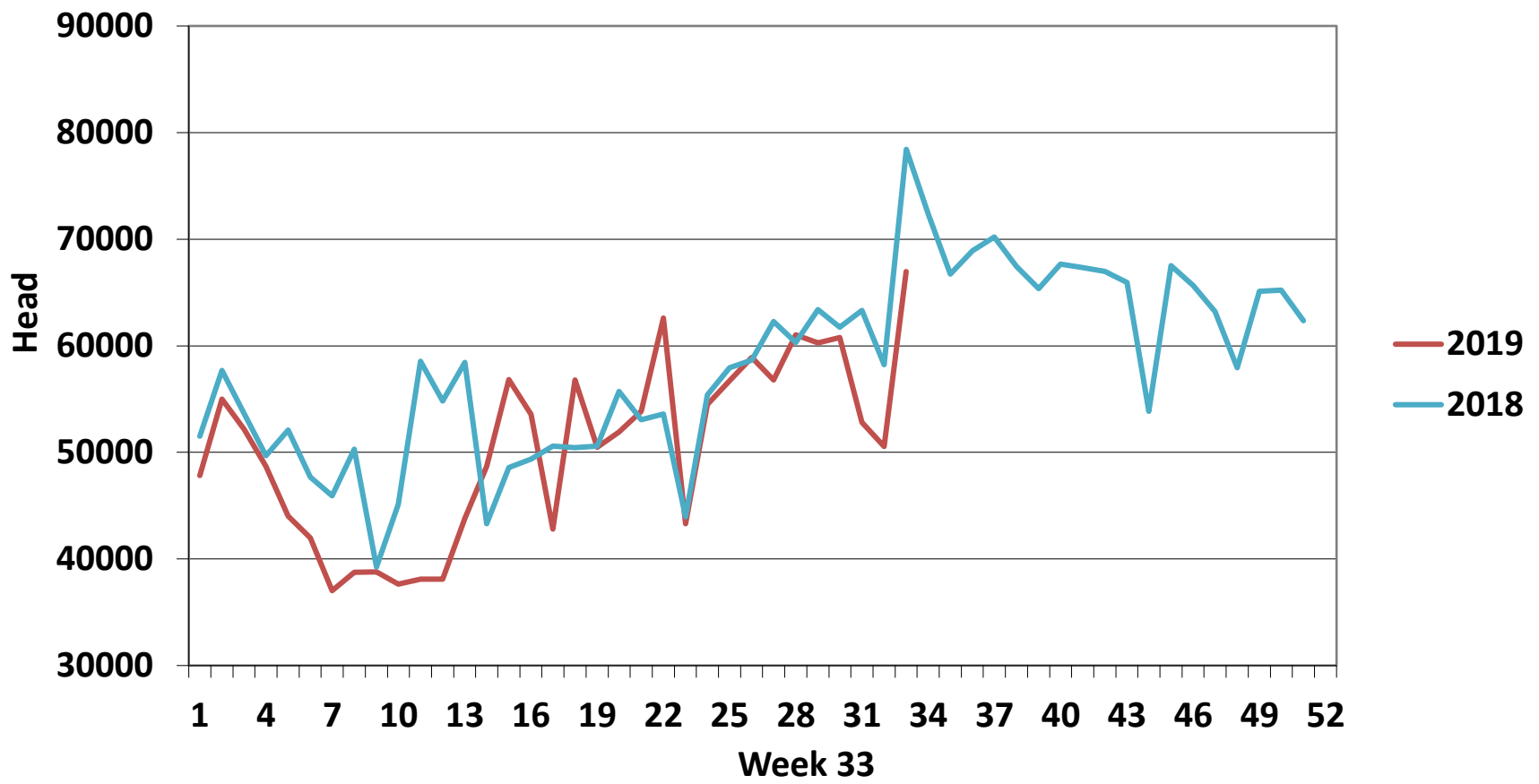
Slaughterings	2019	2018	Change
Weekly	66,960	78,428	-15%
YTD	1,661,938	1,783,586	-7%

EU Market Rates Heavy Lambs	€/100kg	% of Commu Price
Belgium	501.4	109%
Denmark	512.7	111%
Germany	496.7	108%
Spain	488.3	106%
France	589.0	128%
Croatia	504.5	109%
Ireland	435.4	94%
Italy	544.0	118%
Cyprus	481.0	104%
Latvia	406.2	88%
Lithuania	448.9	97%
Netherlands	527.1	114%
Austria	573.0	124%
Poland	441.0	96%
Romania	254.5	55%
Finland	391.4	85%
Sweden	452.8	98%
Northern Ireland	393.9	85%
Great Britain	430.0	93%
United Kingdom	427.4	93%
Community	461.7	100%

**REPORT ON SLAUGHTERING AT SHEEP EXPORT PREMISES
WEEK 33**

CATEGORY	2019		2018		DIFFERENCE	
	Weekly	Cumulative	Weekly	Cumulative	Weekly	Cumulative
Lambs/Hoggets	151	737,273	177	828,256	-26	90,983
Spring Lambs	56,190	684,010	68,300	656,917	-12,110	27,093
Ewes and Rams	10,566	240,294	9,950	298,285	616	57,991
Light Lambs	53	361	1	128	52	233
TOTAL	66,960	1,661,938	78,428	1,783,586	-11,468	-121,648

Weekly Sheep Slaughtering



Ave. Price €/100 kg for Sheepmeat

