

Meat Market Report

02/09/19 - 08/09/19

Week

36



**An Roinn Talmhaíochta,
Bia agus Mara**

Department of Agriculture,
Food and the Marine

MARKET SUMMARY

Beef

Deadweight Prices c/100Kg (Including VAT)

	U3	U4	R3	R4	O3	O4	P+3
Steers	372.3	367.5	361.4	359.0	341.4	342.0	318.9
Heifers	386.4	384.0	371.7	369.5	356.1	354.4	325.3
Young Bulls	353.1	346.7	348.3	344.2	327.2	326.0	310.0
Cows			316.8	316.9	298.1	297.5	287.6

Liveweight Prices

*Bull Calf Average Price	€165.6 per head (Excluding VAT)
**Young Store Average Price	€211.0 per 100kg (Excluding VAT)
***Yearling (male & female) Price	€184.5 per 100kg (Excluding VAT)

* Aged 8-28 days ** Aged 180-364 days, Male & Female ***age 365-730 days

Slaughterings

22,147 cattle slaughtered this week, of which steers were 10,125 (46%), heifers 6,218 (28%), young bulls 1,631 (7%) and cows 3,786 (17%). Total YTD slaughter is 1,199,224 compared to 1,200,002 in 2018, a 0.1% decrease.

Live Trade

1,413 cattle were exported in the week commencing 02/09/2019, 1,070 to EU (Except NI). Live exports for 2019 amount to 244,028 compared to 203,922 in 2018, up 20% on 2018 levels.

*This data is provisional and subject to revision.

The next meeting of the Management Committee for the Common Organisation of Agricultural Markets (Animal Products Sector) is 19th September 2019

CONTENTS:

Page 2: Market Summary Beef
 Page 3: Market Summary Other Meats
 Page 4: Beef Price and Slaughter Summary
 Page 5: Comparative Beef Prices
 Page 6: Steer and Young Bull Price
 Page 7: Heifer and Cow Graphs
 Page 8: Price and Slaughter Graphs
 Page 9: Liveweight Beef Graphs

Page 10: Beef Export Maps
 Page 11: Beef Export Info
 Page 12: Pig price and slaughter graphs
 Page 13: Sheep prices and slaughter
 Page 15: Sheep price and slaughter graphs

MARKET SUMMARY

Pigmeat

Grade E Pig
Prices (Ex.
VAT)

The Grade E Pig price for week commencing 02/09/2019 was €174.05 per 100Kg compared to €136.59 in the same week last year, which represents a 27% increase.

Slaughtering

66,070 pigs were slaughtered in week 36 of which 1,706 were sows. The cumulative figure for pig slaughterings in 2019 is 2,338,699 which is a 1% decrease with the same point last year.

Sheepmeat

Sheepmeat
Prices (Ex.
VAT)

The national average price for the week commencing 02/09/2019 was €418.17 per 100Kg, a decrease of 2.6% over the same week last year.

Slaughtering

46,895 sheep were slaughtered at sheep export premises the week commencing 02/09/2019, compared to 68,913 in the same week of 2018. Sheep slaughterings for 2019 are 8% down on 2018 at 1,834,682 head.

Live Trade

Total live exports to European Countries stood at 6,227 head to the end of August 2019.

Poultry

Slaughtering

Cumulative poultry slaughterings for 2019* stand at 73,160,233 birds at the end of week 36, up 7% compared to the same period last year.

*Latest Figures are provisional and subject to change

Dead Weight Prices	W/C	W/C	Same week 2018	% change prev week	% change 2018
	02/09/19	26/08/19	03/09/18		
Steers (R3) (c/kg)	342.9	343.1	378.1	0.0%	-9.3%
Heifers (R3) (c/kg)	352.7	352.9	389.0	-0.1%	-9.3%
Young Bulls (U3) (c/kg)	335.0	341.8	382.7	-2.0%	-12.5%
Cows (04) (c/kg)	282.2	284.0	303.8	-0.6%	-7.1%

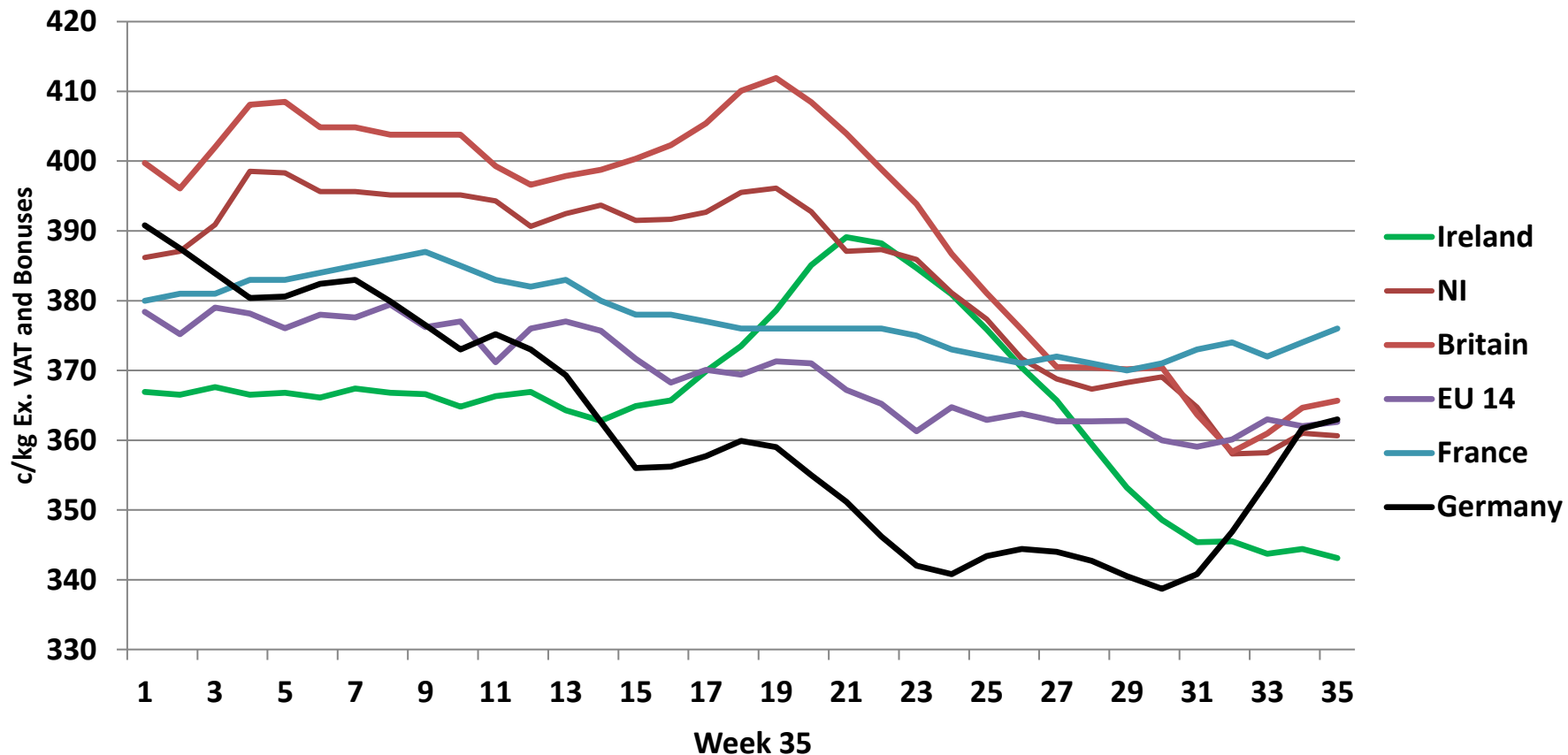
Live Weight Prices	W/C	W/C	Same week 2018	% change previous week	% change 2018
	02/09/19	26/08/19	03/09/18		
Yearlings (Male) (Aged 365 - 730 days) - (€/100Kg)	181	178	183	1.7%	-1.1%
Yearlings (Female) (Aged 365 - 730 days) - (€/100Kg)	188	180	186	4.4%	1.1%
Young Stores (Male & Female) (Aged 180 - 364 days) - (€/100Kg)	211	203	223	3.9%	-5.4%
Bull Calf (€/head) Dairy	136.0	171.9	157.0	-20.9%	-13.4%
Bull Calf (€/head) Beef	195.3	242.7	239.7	-19.5%	-18.5%
Bull Calf (€/head) Average	165.6	207.3	198.3	-20.1%	-16.5%

Slaughter Figures	% of weekly figures	W/C	Same week 2018	Year to Date		Change 2019 v 2018	
		02-Sep-19		2019	2018	Head	%
Steers	45.7%	10,125	16,084	411,539	436,197	-24,658	-5.7%
Cows	17.1%	3,786	8,284	246,846	267,058	-20,212	-7.6%
Heifers	28.1%	6,218	9,257	352,493	327,973	24,520	7.5%
Young Bulls	7.4%	1,631	1,902	161,439	146,188	15,251	10.4%
Mature Bulls	1.7%	387	607	26,907	22,586	4,321	19.1%
Total	100%	22,147	36,134	1,199,224	1,200,002	-778	-0.1%

821

Live Exports	W/C	Same week	W/C	Year to Date		Change 2019 v 2018	
	2-Sep-19	2018	26-Aug-19	2019	2018	Head	%
Northern Ireland	343	1,008	263	21,630	12,203	9,427	77%
EU Except NI	1,070	2,081	1,808	214,321	173,728	40,593	23%
Third Countries	0	199	0	8,077	17,991	-9,914	-
Total	1,413	3,288	2,071	244,028	203,922	40,106	20%
Calves YTD:	191,605			Adult YTD:Cattle		52,294	

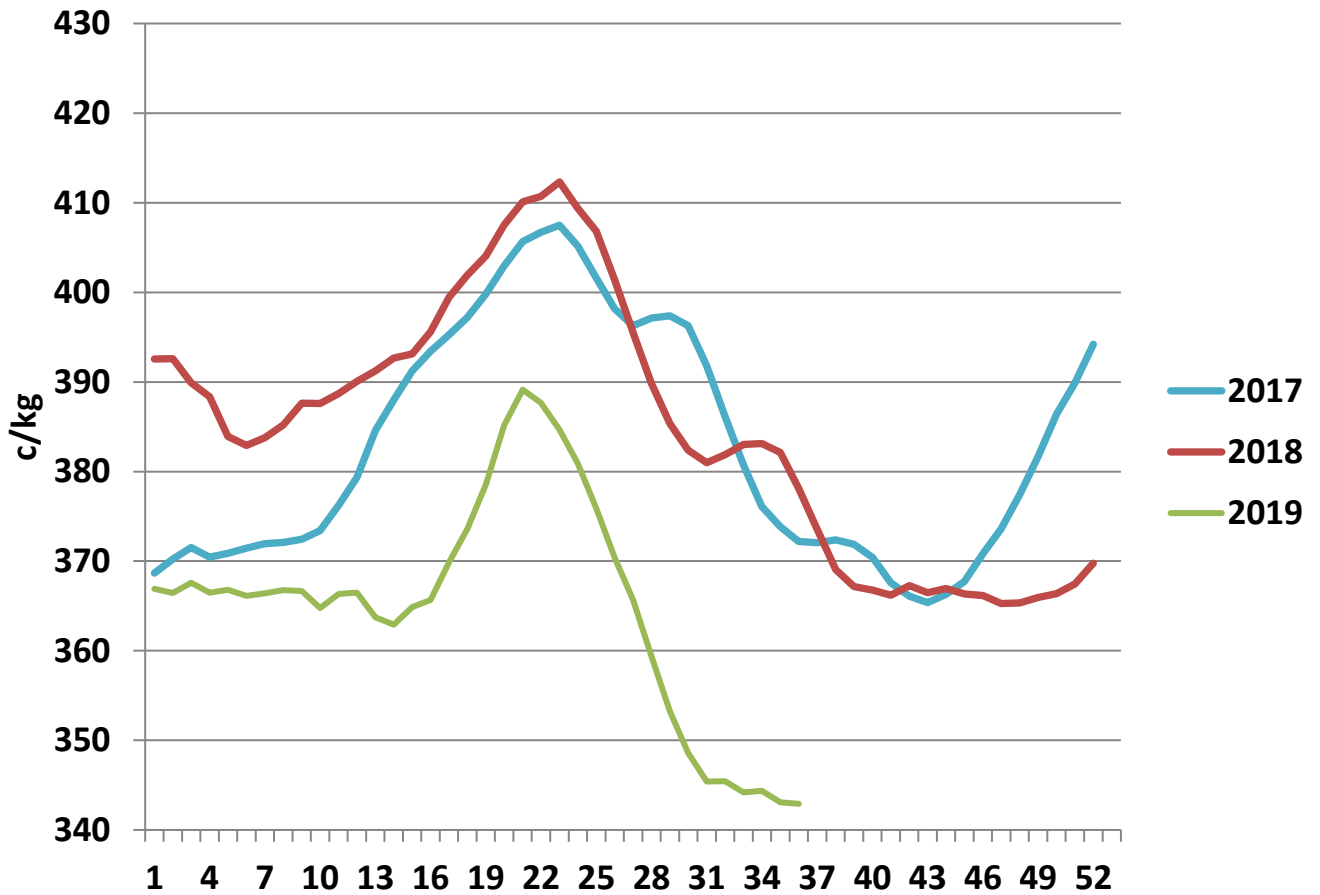
Irish Deadweight Cattle Prices vs Selected Other Markets, 2019



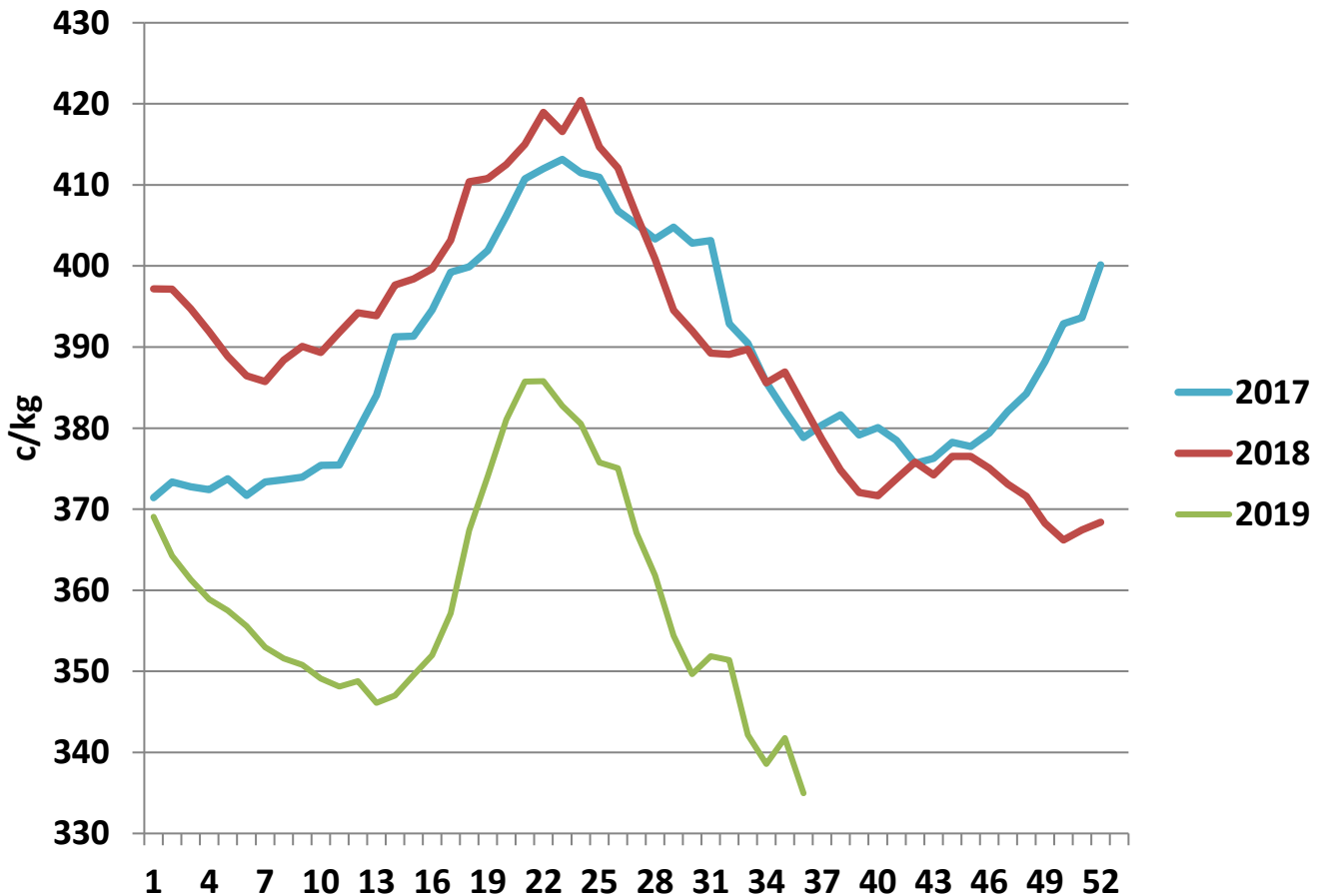
Livestock Pricing

	Ireland	NI	Britain	EU 14 Average	France	Germany
W/C 26/08/19	343.1	360.62	364.65	362.62	376	363

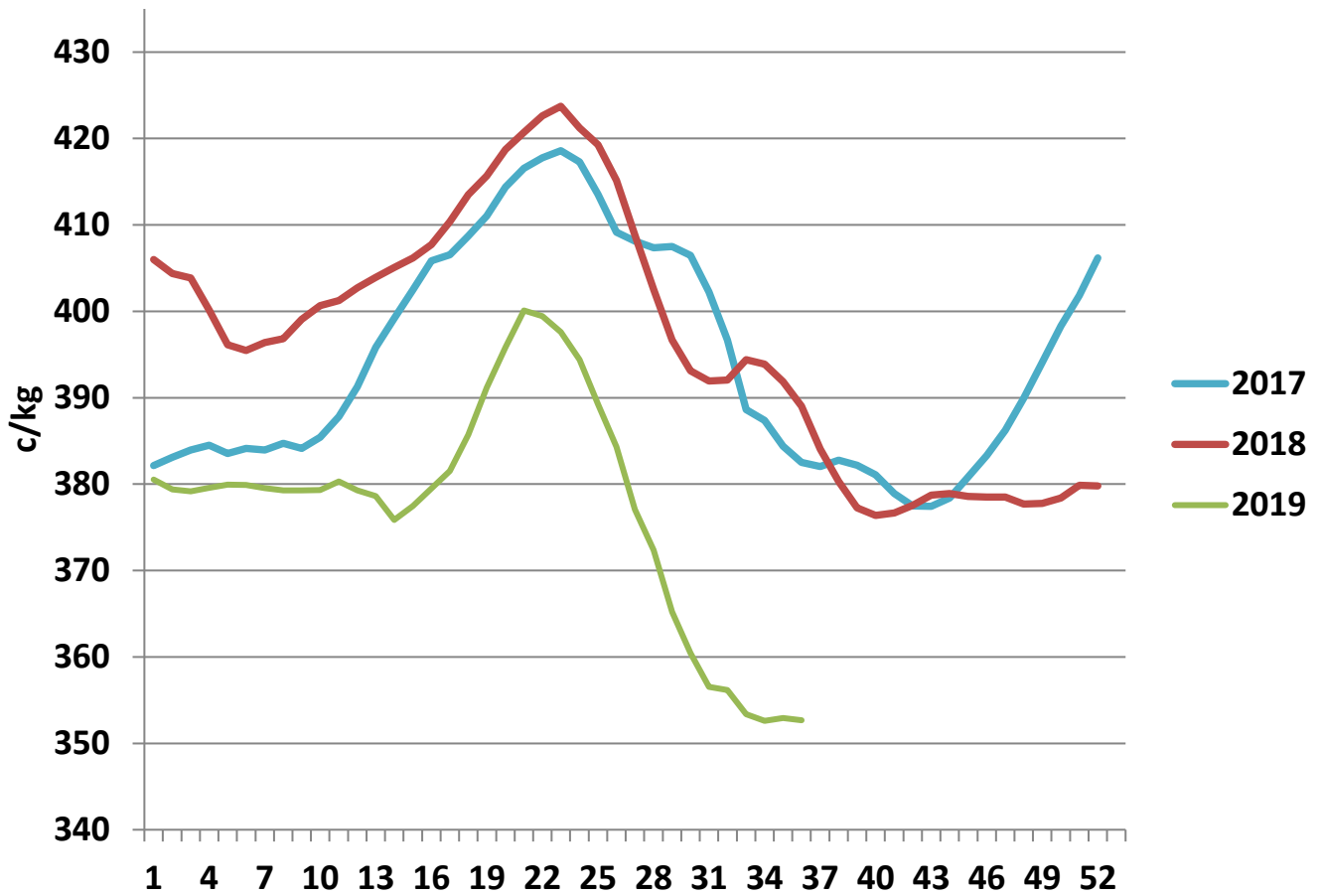
R3 Steer prices ex. VAT



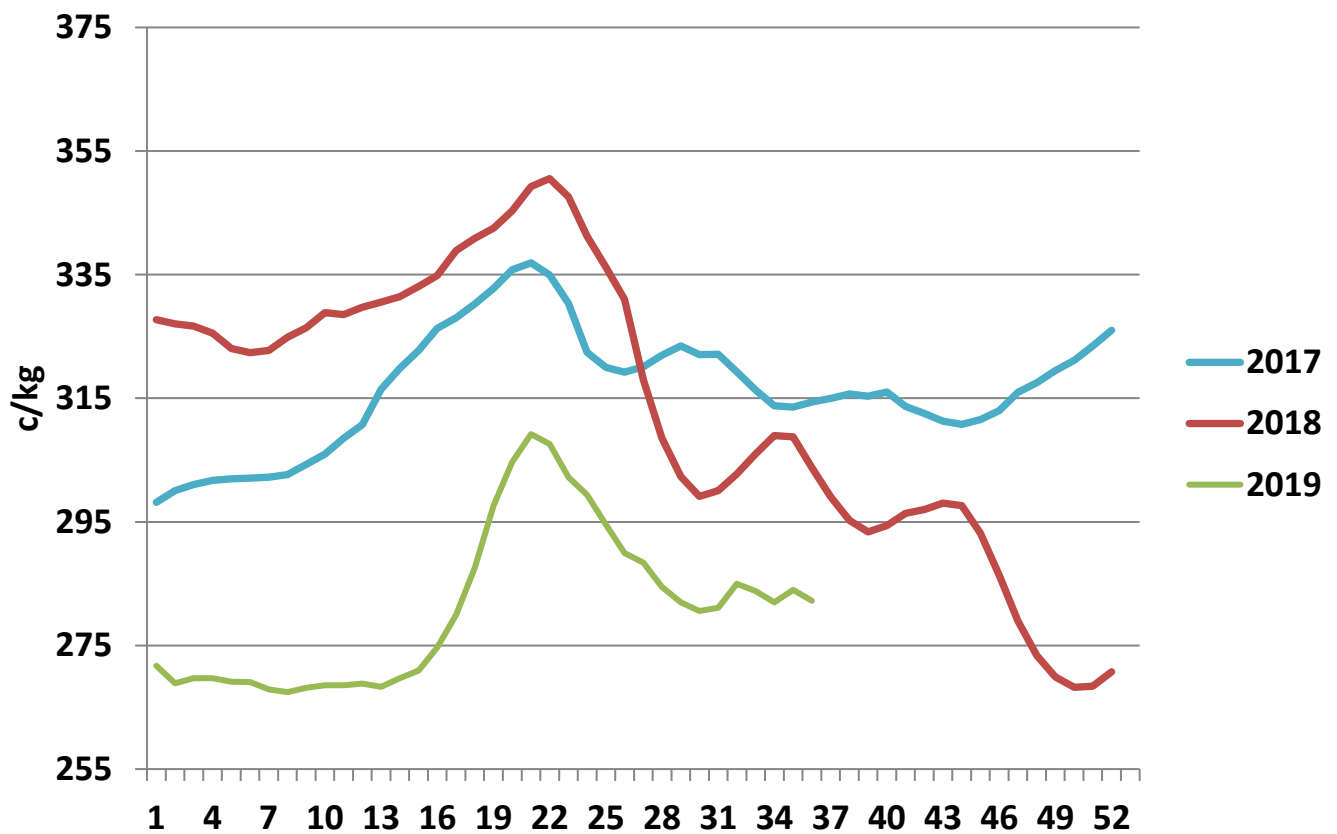
U3 Young Bull prices ex. VAT



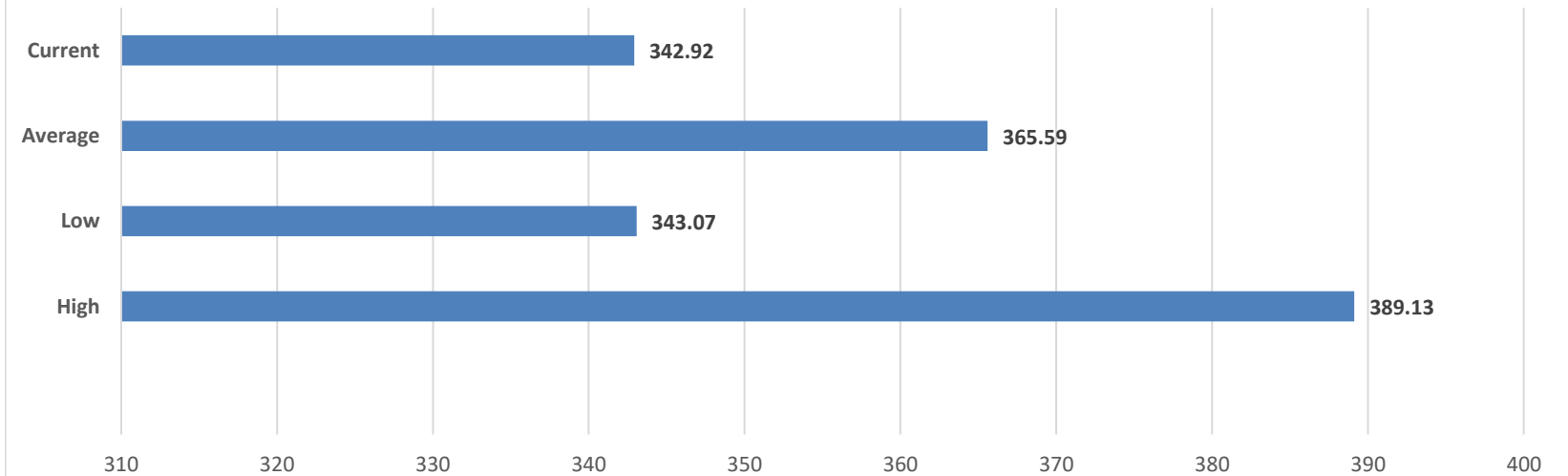
R3 Heifer prices ex. VAT



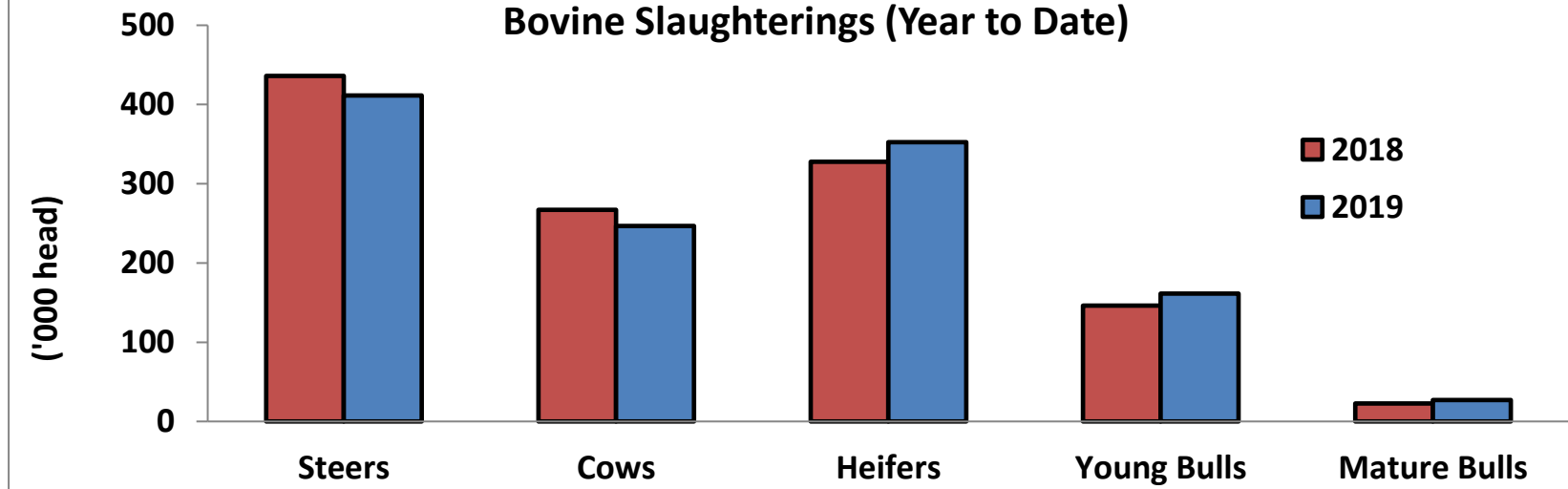
O4 Cow prices ex. VAT



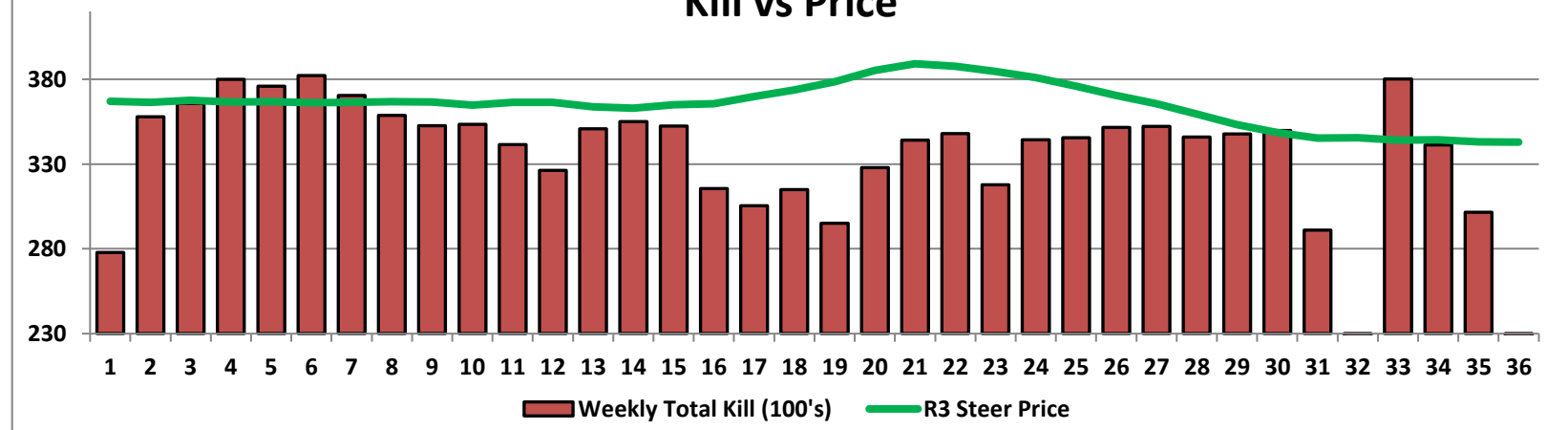
6 Month R3 Steer Statistics



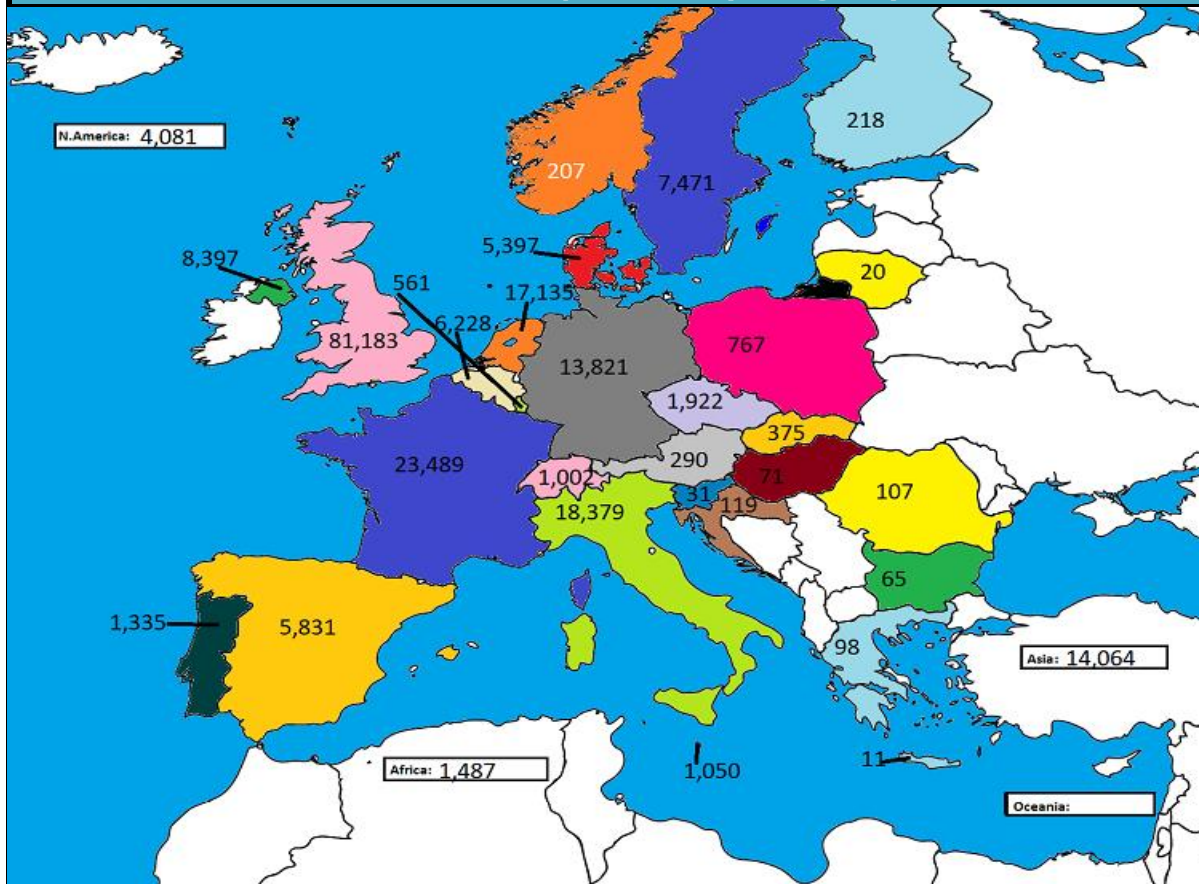
Bovine Slaughterings (Year to Date)



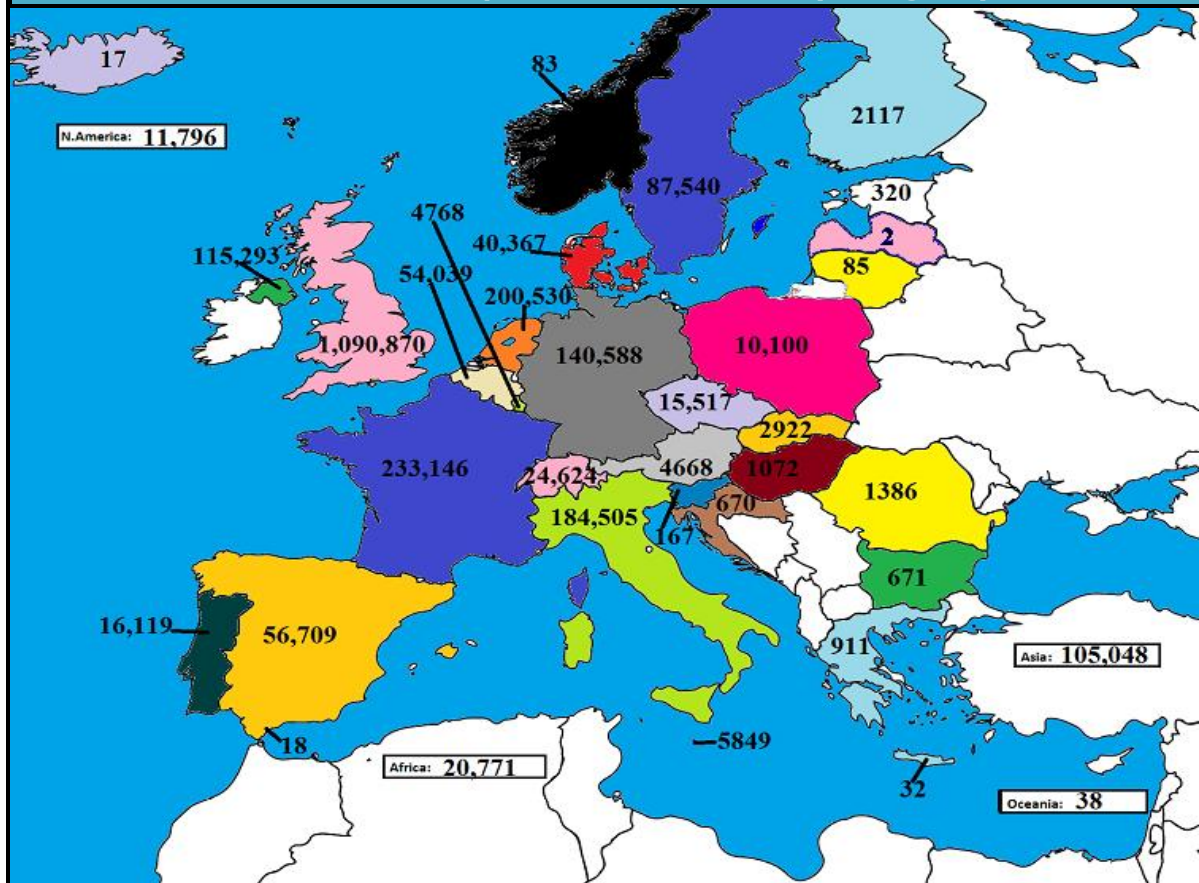
Kill vs Price



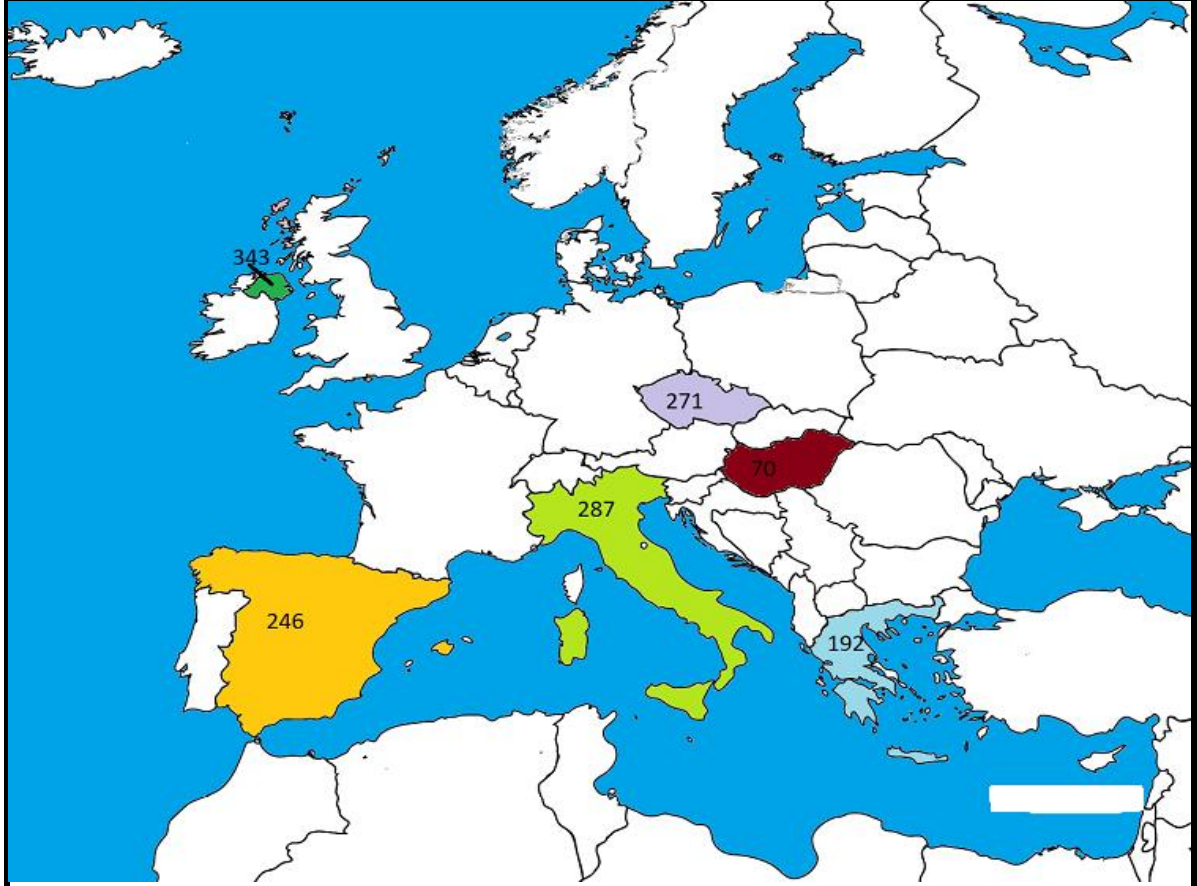
June 2019 Beef exports, €000 (CSO figures)



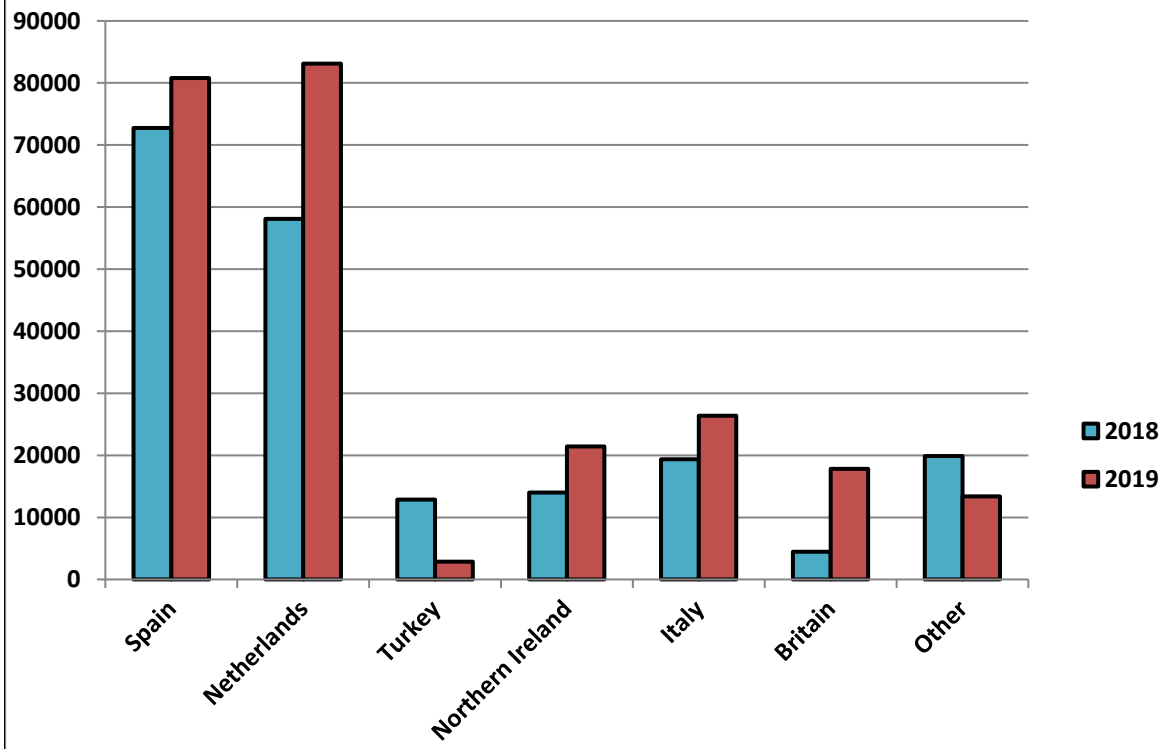
Cumulative beef exports to Dec 2018, €000 (CSO figures)



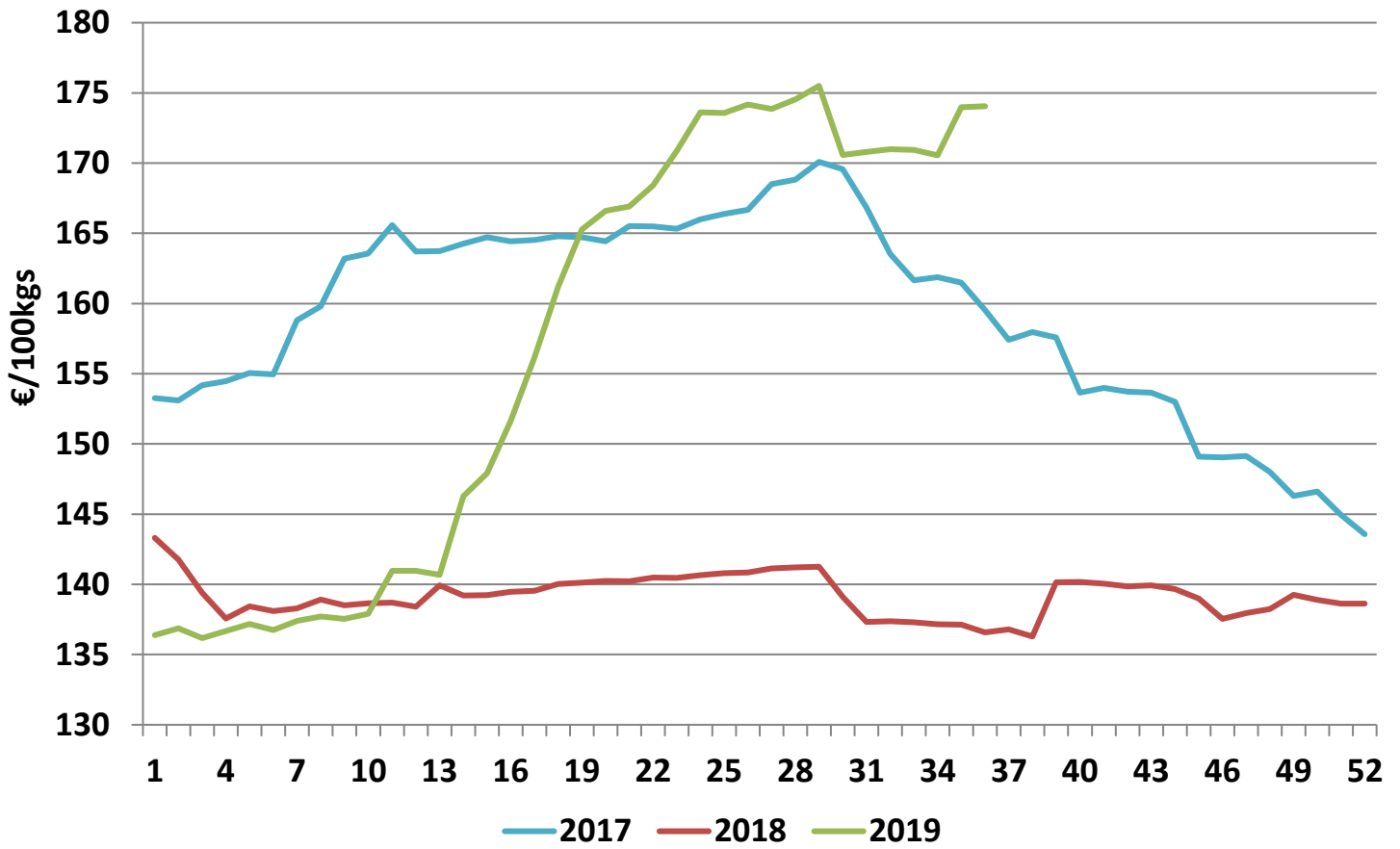
Cattle exported, w/c 02/09/19



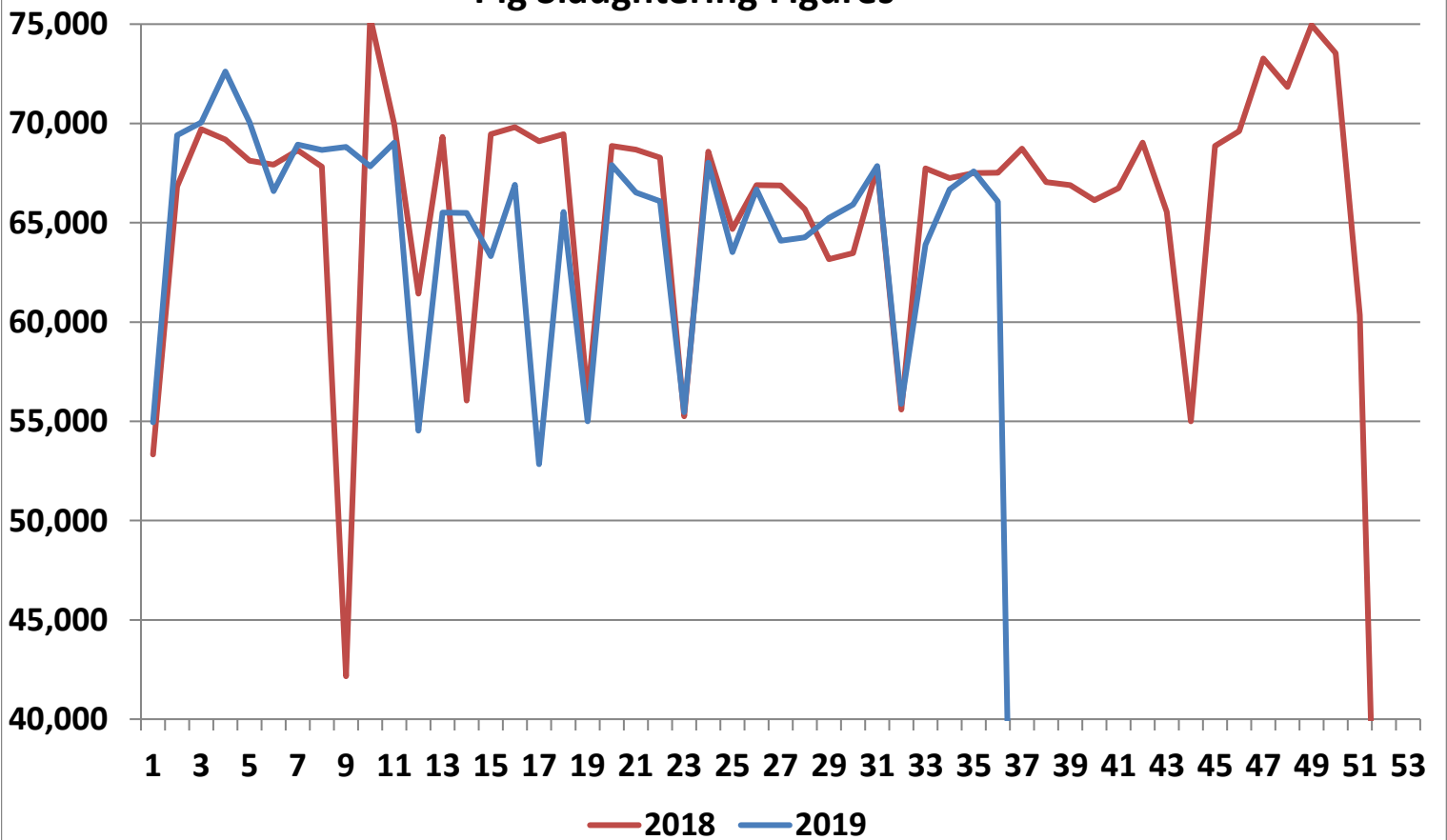
Cumulative cattle export figures, 2019



Average Grade E Pig Price



Pig Slaughtering Figures



Sheepmeat Information for Week 36

NOTE: EU PRICES
ARE PROVISIONAL AT
THE TIME OF
PUBLICATION AND
MAY NOT BE
REFLECTIVE OF THE
CURRENT PERIOD

Irish Prices €/100 kg	2019	2018	Change
Ave Factory Price	433.52	454.80	-4.7%
Ave Mart Price	382.33	370.03	3.3%
National Ave Price	418.17	429.37	-2.6%
YTD Ave	475.26	504.24	-5.7%

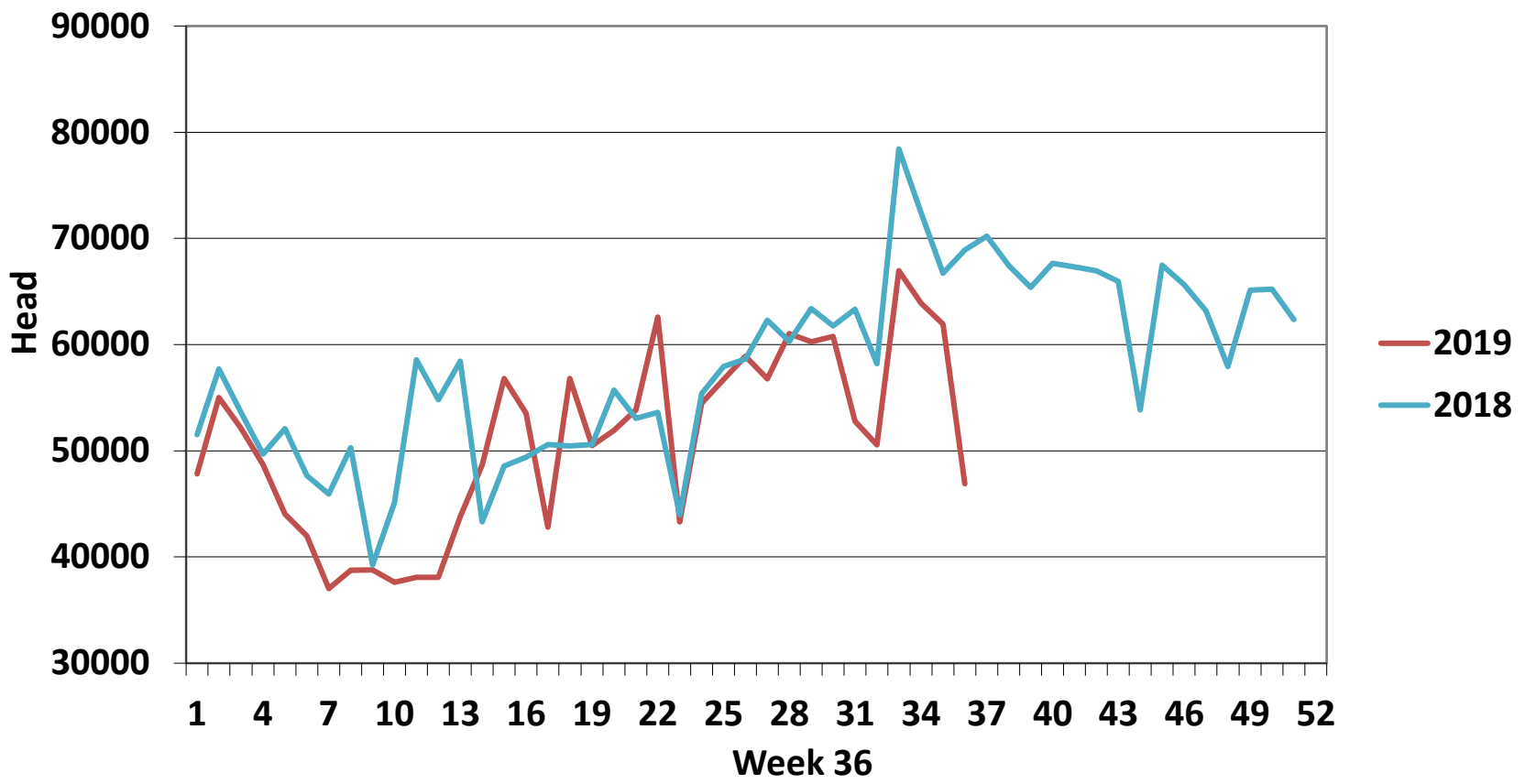
Slaughterings	2019	2018	Change
Weekly	46,895	68,913	-32%
YTD	1,834,682	1,991,619	-8%

EU Market Rates Heavy Lambs	€/100kg	% of Community Price
Belgium	483.5	104%
Denmark	512.7	111%
Germany	493.6	107%
Spain	501.8	108%
France	609.0	131%
Croatia	530.4	114%
Ireland	418.2	89%
Italy	576.0	124%
Cyprus	517.0	112%
Latvia	400.0	86%
Lithuania	411.0	89%
Netherlands	529.1	114%
Austria	548.0	118%
Poland	433.7	94%
Romania	180.0	39%
Finland	409.6	88%
Sweden	436.2	94%
Northern Ireland	376.4	81%
Great Britain	432.7	93%
United Kingdom	428.7	92%
Community	463.5	100%

**REPORT ON SLAUGHTERING AT SHEEP EXPORT PREMISES
WEEK 36**

CATEGORY	2019		2018		DIFFERENCE	
	Weekly	Cumulative	Weekly	Cumulative	Weekly	Cumulative
Lambs/Hoggets	101	737,691	95	828,505	6	-90,814
Spring Lambs	39,833	828,884	55,758	829,622	-15,925	-738
Ewes and Rams	6,961	267,746	13,059	333,363	-6,098	-65,617
Light Lambs		361	1	129	-1	232
TOTAL	46,895	1,834,682	68,913	1,991,619	-22,018	-156,937

Weekly Sheep Slaughtering



Ave. Price €/100 kg for Sheepmeat

