

Meat Market Report

14/10/19 - 20/10/19

Week

42



**An Roinn Talmhaíochta,
Bia agus Mara**

Department of Agriculture,
Food and the Marine

MARKET SUMMARY

Beef

Deadweight Prices c/100Kg (Including VAT)

	U3	U4	R3	R4	O3	O4	P+3
Steers	373.0	368.0	363.0	360.0	342.0	341.0	314.0
Heifers	385.0	381.0	374.0	370.0	357.0	353.0	315.0
Young Bulls	350.0	355.0	340.0	336.0	321.0	318.0	301.0
Cows			304.0	303.0	283.0	283.0	269.0

Liveweight Prices

*Bull Calf Average Price	€144.8 per head (Excluding VAT)
**Young Store Average Price	€207.0 per 100kg (Excluding VAT)
***Yearling (male & female) Price	€176.0 per 100kg (Excluding VAT)

* Aged 8-28 days ** Aged 180-364 days, Male & Female ***age 365-730 days

Slaughterings

38,089 cattle slaughtered this week, of which steers were 17,219 (45%), heifers 10,486 (27%), young bulls 2,580 (7%) and cows 7,275 (19%). Total YTD slaughter is 1,371,196 compared to 1,432,319 in 2018, a 4.3% decrease.

Live Trade

2,820 cattle were exported in the week commencing 14/10/2019, 1,843 to EU (Except NI). Live exports for 2019 amount to 266,225 compared to 221,507 in 2018, up 20% on 2018 levels.

*This data is provisional and subject to revision.

The next meeting of the Management Committee for the Common Organisation of Agricultural Markets (Animal Products Sector) is 17th October 2019

CONTENTS:

Page 2: Market Summary Beef
 Page 3: Market Summary Other Meats
 Page 4: Beef Price and Slaughter Summary
 Page 5: Comparative Beef Prices
 Page 6: Steer and Young Bull Price
 Page 7: Heifer and Cow Graphs
 Page 8: Price and Slaughter Graphs
 Page 9: Liveweight Beef Graphs

Page 10: Beef Export Maps
 Page 11: Beef Export Info
 Page 12: Pig price and slaughter graphs
 Page 13: Sheep prices and slaughter
 Page 15: Sheep price and slaughter graphs

MARKET SUMMARY

Pigmeat

Grade E Pig
Prices (Ex.
VAT)

The Grade E Pig price for week commencing 14/10/2019 was €178.61 per 100Kg compared to €139.85 in the same week last year, which represents a 28% increase.

Slaughtering

66,965 pigs were slaughtered in week 42 of which 1,709 were sows. The cumulative figure for pig slaughterings in 2019 is 2,734,479 which is a 1% decrease with the same point last year.

Sheepmeat

Sheepmeat
Prices (Ex.
VAT)

The national average price for the week commencing 14/10/2019 was €407.46 per 100Kg, a decrease of 4% over the same week last year.

Slaughtering

65,156 sheep were slaughtered at sheep export premises the week commencing 14/10/2019, compared to 66,959 in the same week of 2018. Sheep slaughterings for 2019 are 8% down on 2018 at 2,194,652 head.

Live Trade

Total live exports to European Countries stood at 6,227 head to the end of August 2019.

Poultry

Slaughtering

Cumulative poultry slaughterings for 2019* stand at 85,735,749 birds at the end of week 42, up 8% compared to the same period last year.

*Latest Figures are provisional and subject to change

Dead Weight Prices	W/C	W/C	Same week 2018	% change prev week	% change 2018
	14/10/19	07/10/19	15/10/18		
Steers (R3) (c/kg)	344.8	345.8	367.3	-0.3%	-6.1%
Heifers (R3) (c/kg)	354.9	355.7	377.5	-0.2%	-6.0%
Young Bulls (U3) (c/kg)	331.9	334.6	375.8	-0.8%	-11.7%
Cows (04) (c/kg)	268.6	274.6	297.0	-2.2%	-9.6%

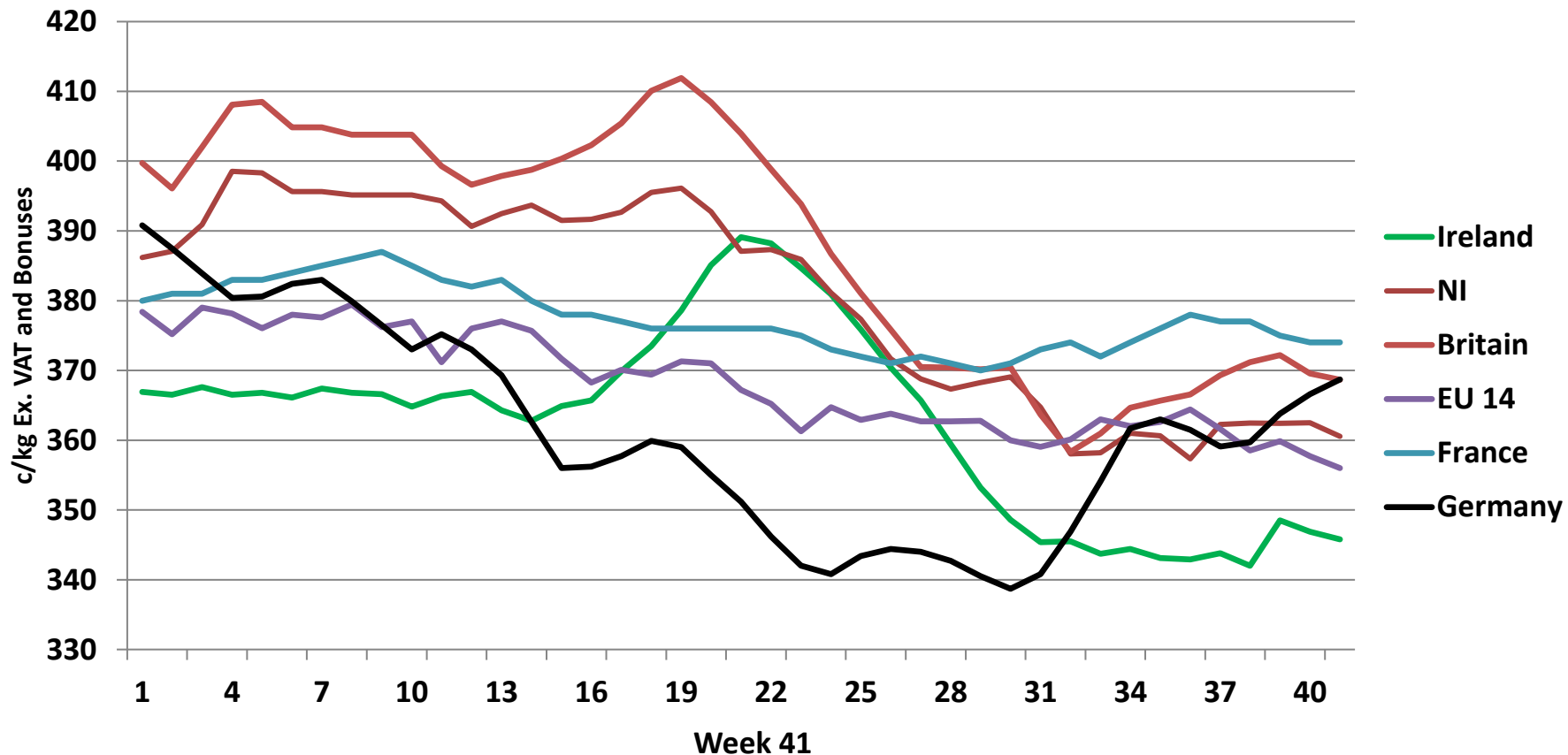
Live Weight Prices	W/C	W/C	Same week 2018	% change previous week	% change 2018
	14/10/19	07/10/19	15/10/18		
Yearlings (Male) (Aged 365 - 730 days) - (€/100Kg)	173	178	182	-2.8%	-4.9%
Yearlings (Female) (Aged 365 - 730 days) - (€/100Kg)	179	180	190	-0.6%	-5.8%
Young Stores (Male & Female) (Aged 180 - 364 days) - (€/100Kg)	207	212	224	-2.4%	-7.6%
Bull Calf (€/head) Dairy	91.5	96.4	115.0	-5.1%	-20.5%
Bull Calf (€/head) Beef	198.1	186.7	204.3	6.1%	-3.0%
Bull Calf (€/head) Average	144.8	141.5	159.6	2.3%	-9.3%

Slaughter Figures	% of weekly figures	W/C	Same week 2018	Year to Date		Change 2019 v 2018	
		14-Oct-19		2019	2018	Head	%
Steers	45.2%	17,219	16,717	489,897	538,705	-48,808	-9.1%
Cows	19.1%	7,275	8,988	277,630	317,891	-40,261	-12.7%
Heifers	27.5%	10,486	9,883	401,800	386,650	15,150	3.9%
Young Bulls	6.8%	2,580	2,625	172,391	162,796	9,595	5.9%
Mature Bulls	1.4%	529	493	29,478	26,277	3,201	12.2%
Total	100%	38,089	38,706	1,371,196	1,432,319	-61,123	-4.3%

821

Live Exports	W/C	Same week	W/C	Year to Date		Change 2019 v 2018	
	14-Oct-19	2018	07-Oct-19	2019	2018	Head	%
Northern Ireland	785	1,173	607	25,801	17,394	8,407	48%
EU Except NI	1,843	2,129	2,685	226,808	186,092	40,716	22%
Third Countries	192	0	0	13,616	18,021	-4,405	-
Total	2,820	3,302	3,292	266,225	221,507	44,718	20%
Calves YTD:		194,114		Adult YTD:Cattle		71,974	

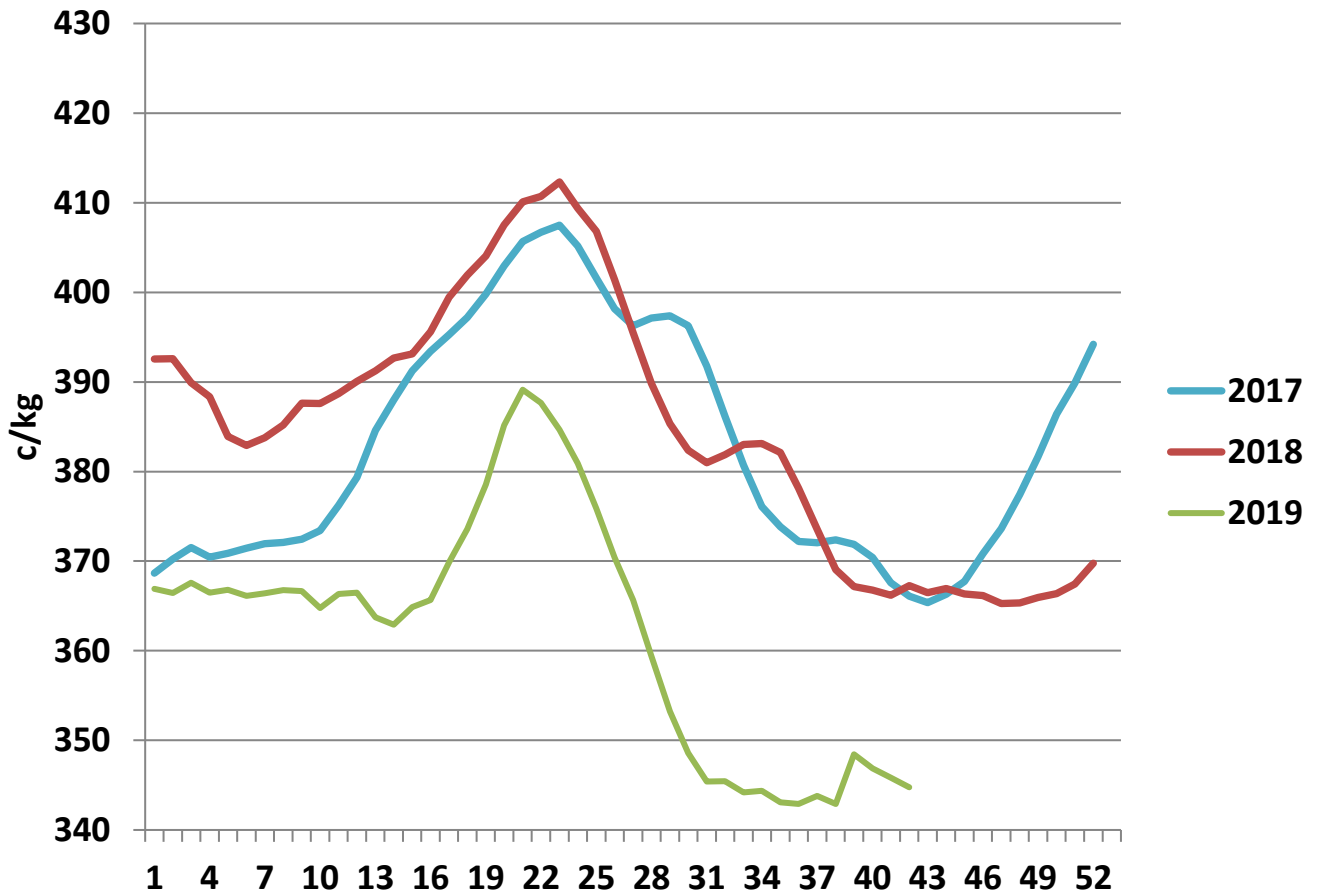
Irish Deadweight Cattle Prices vs Selected Other Markets, 2019



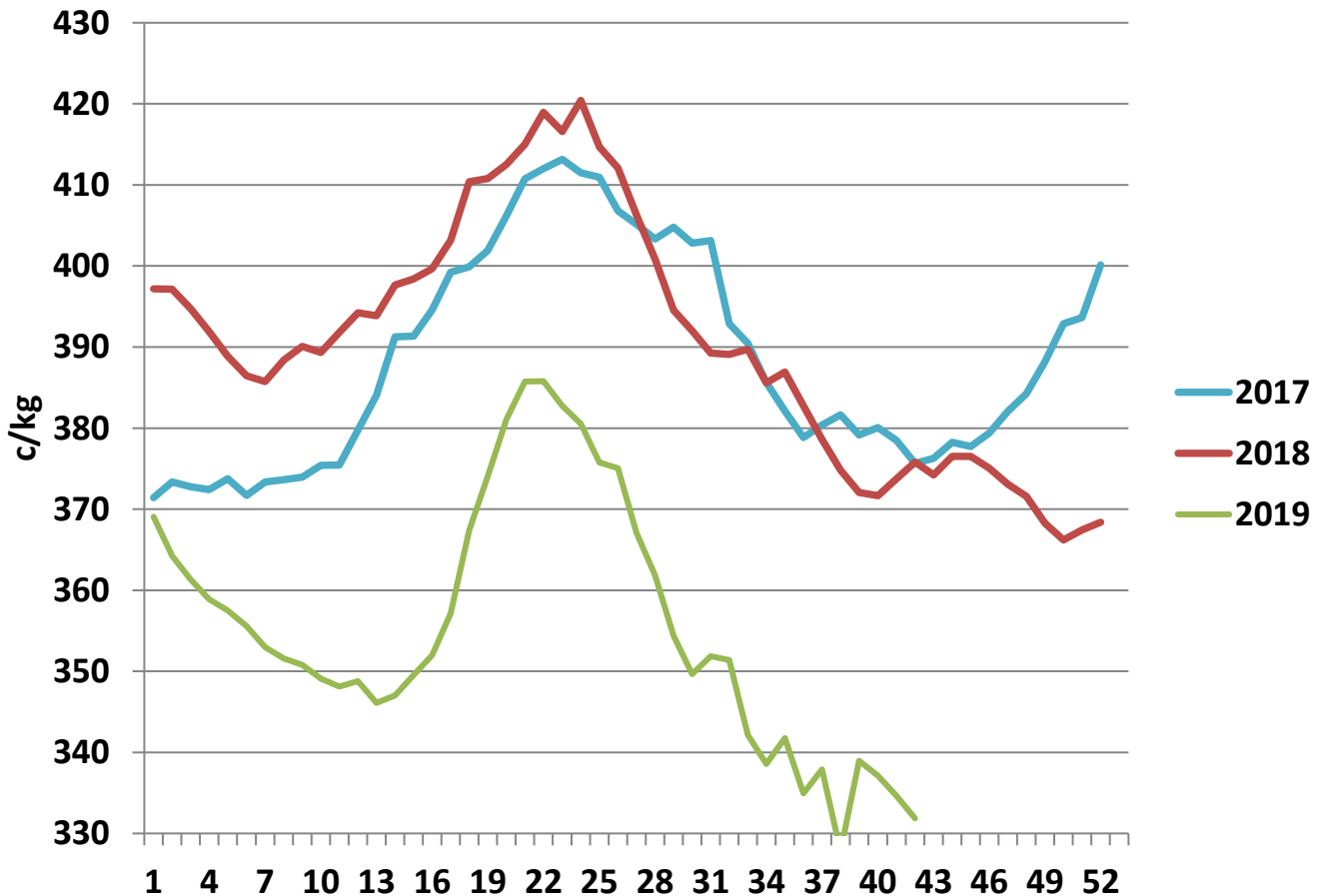
Livestock Pricing

	Ireland	NI	Britain	EU 14 Average	France	Germany
W/C 07/10/19	345.8	360.56	368.66	356	374	368.7

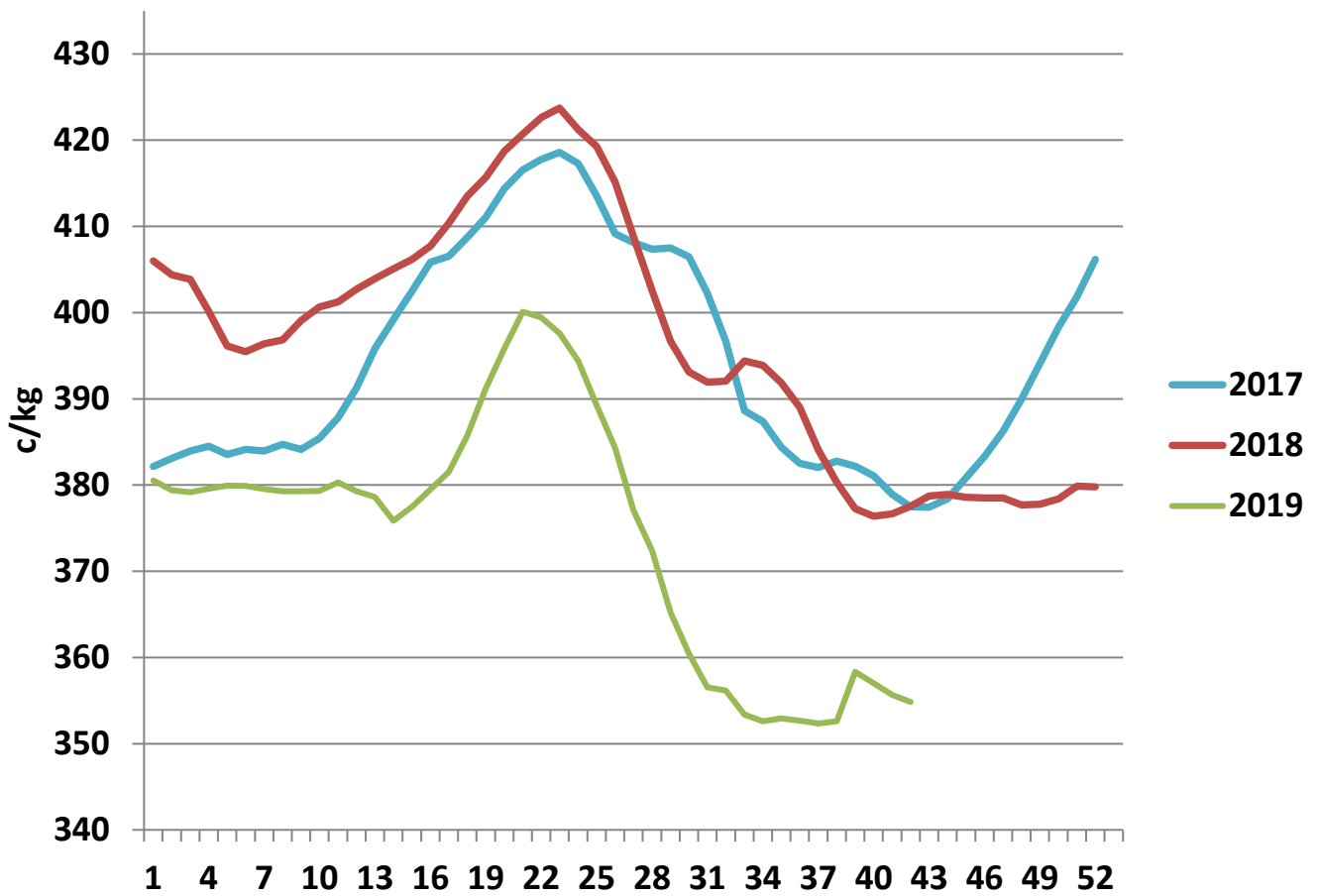
R3 Steer prices ex. VAT



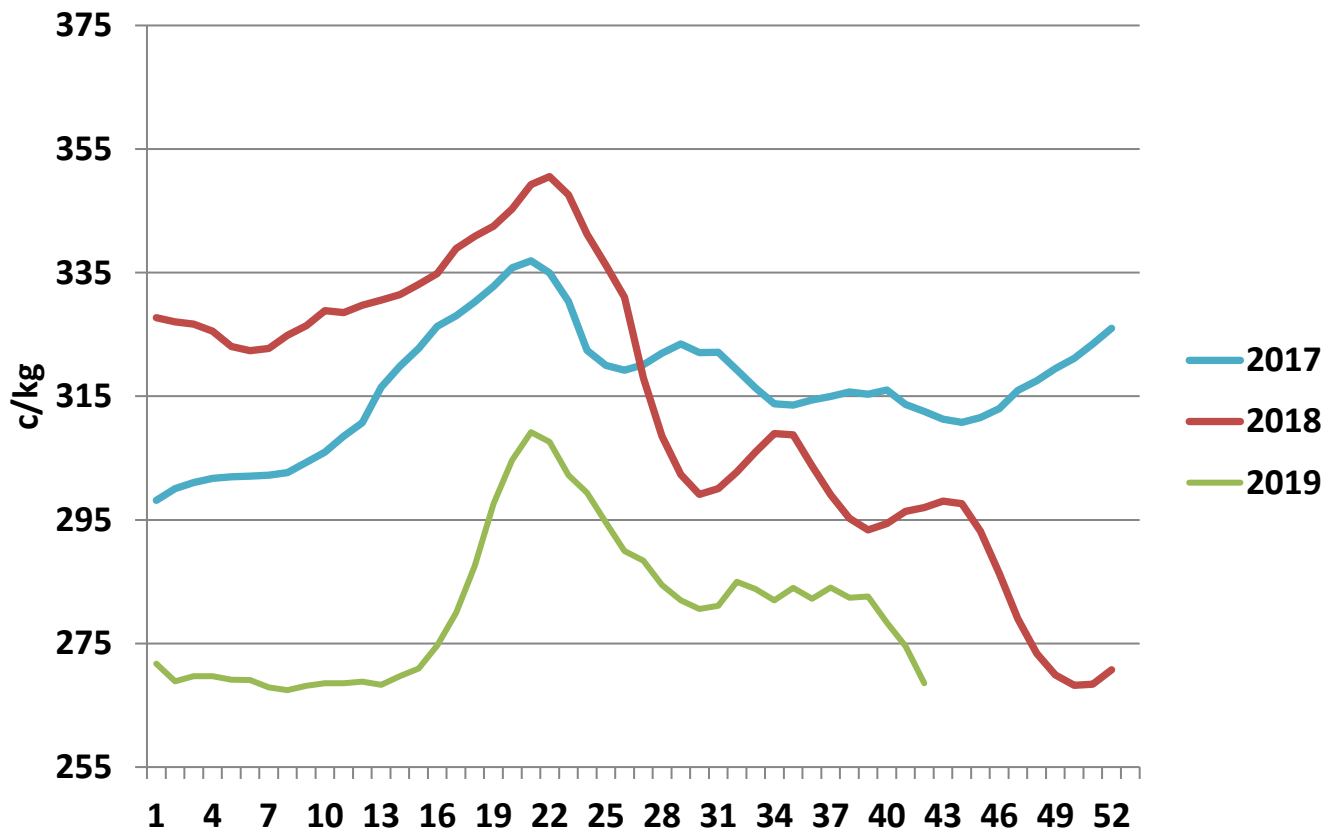
U3 Young Bull prices ex. VAT



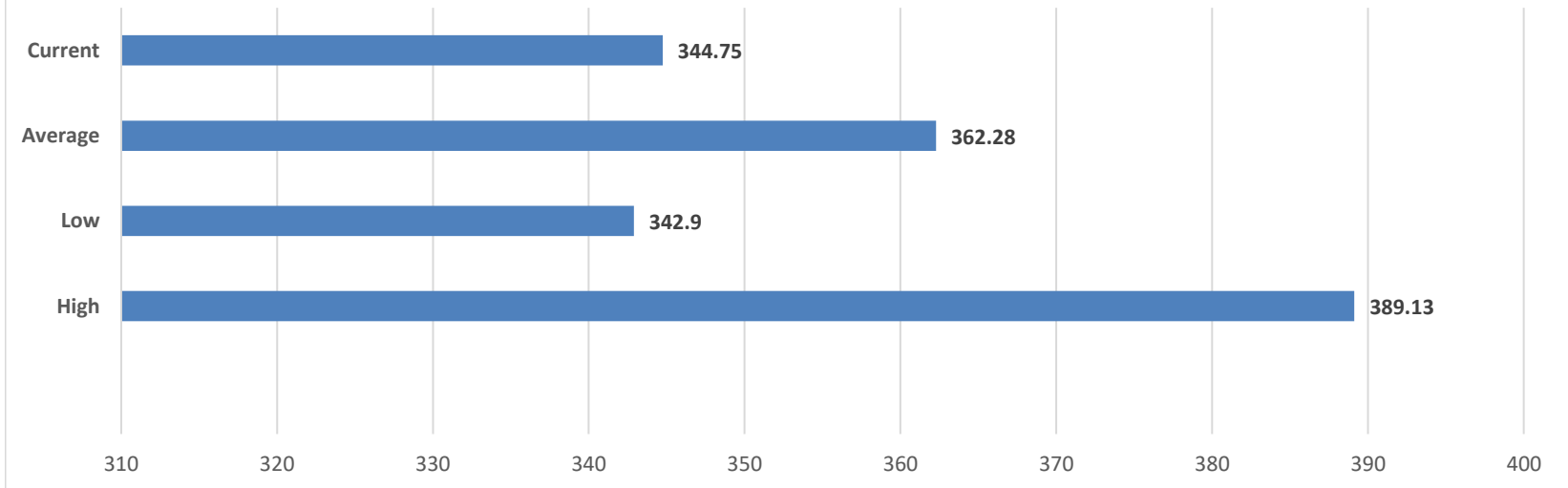
R3 Heifer prices ex. VAT



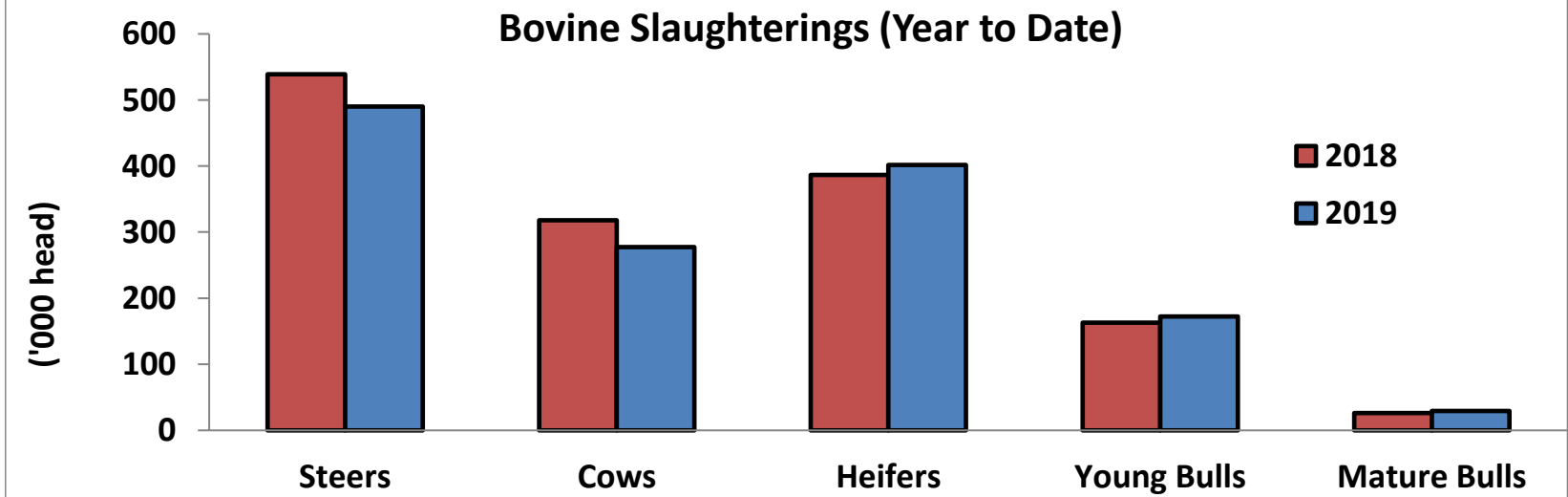
O4 Cow prices ex. VAT



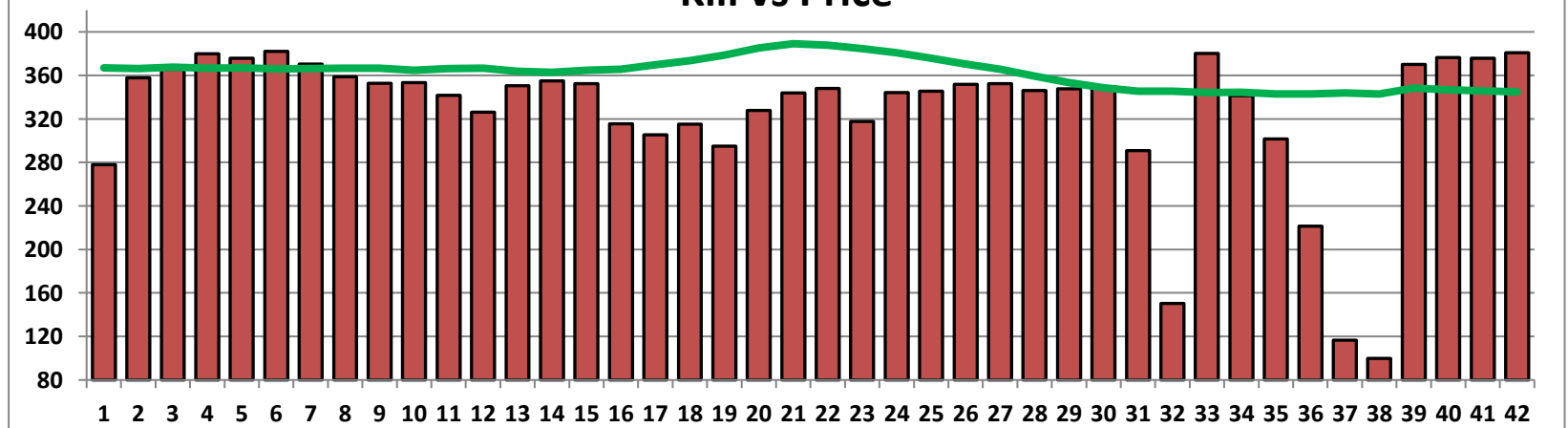
6 Month R3 Steer Statistics



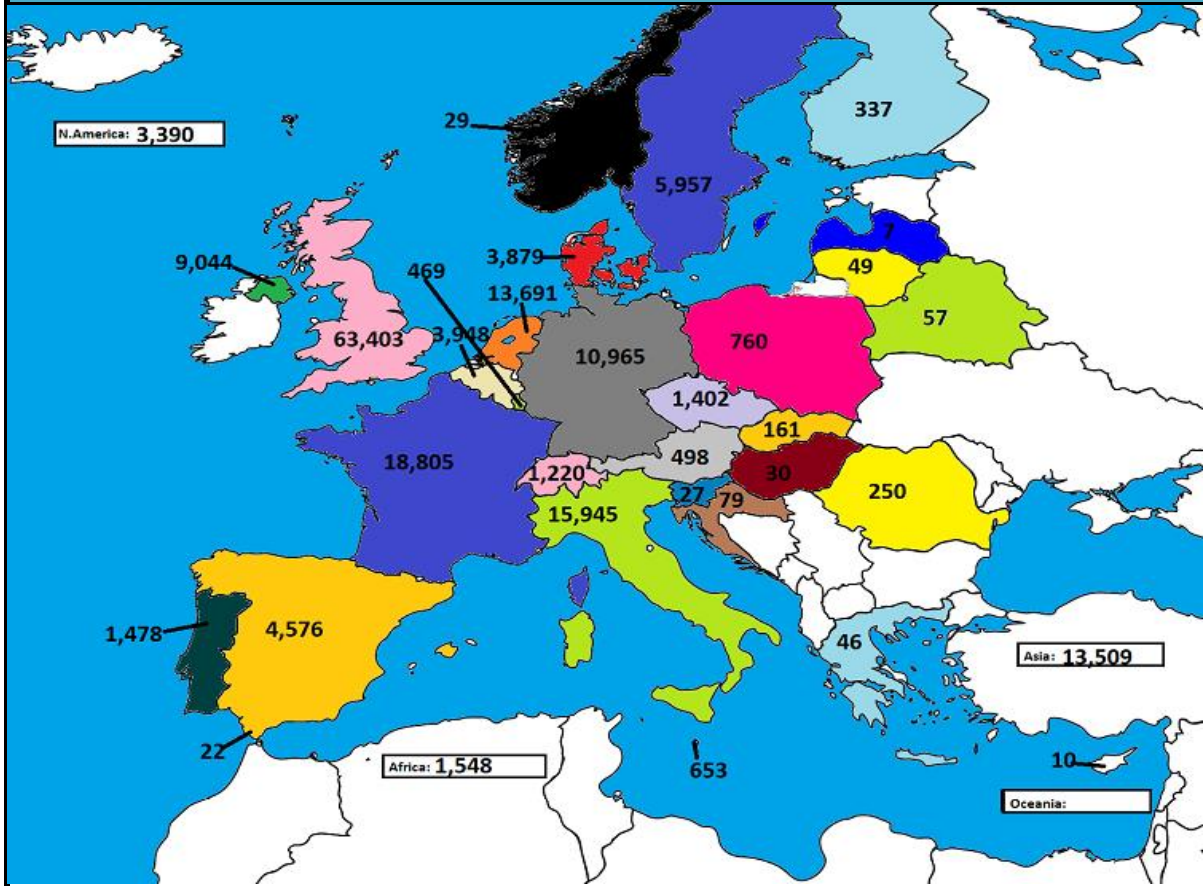
Bovine Slaughterings (Year to Date)



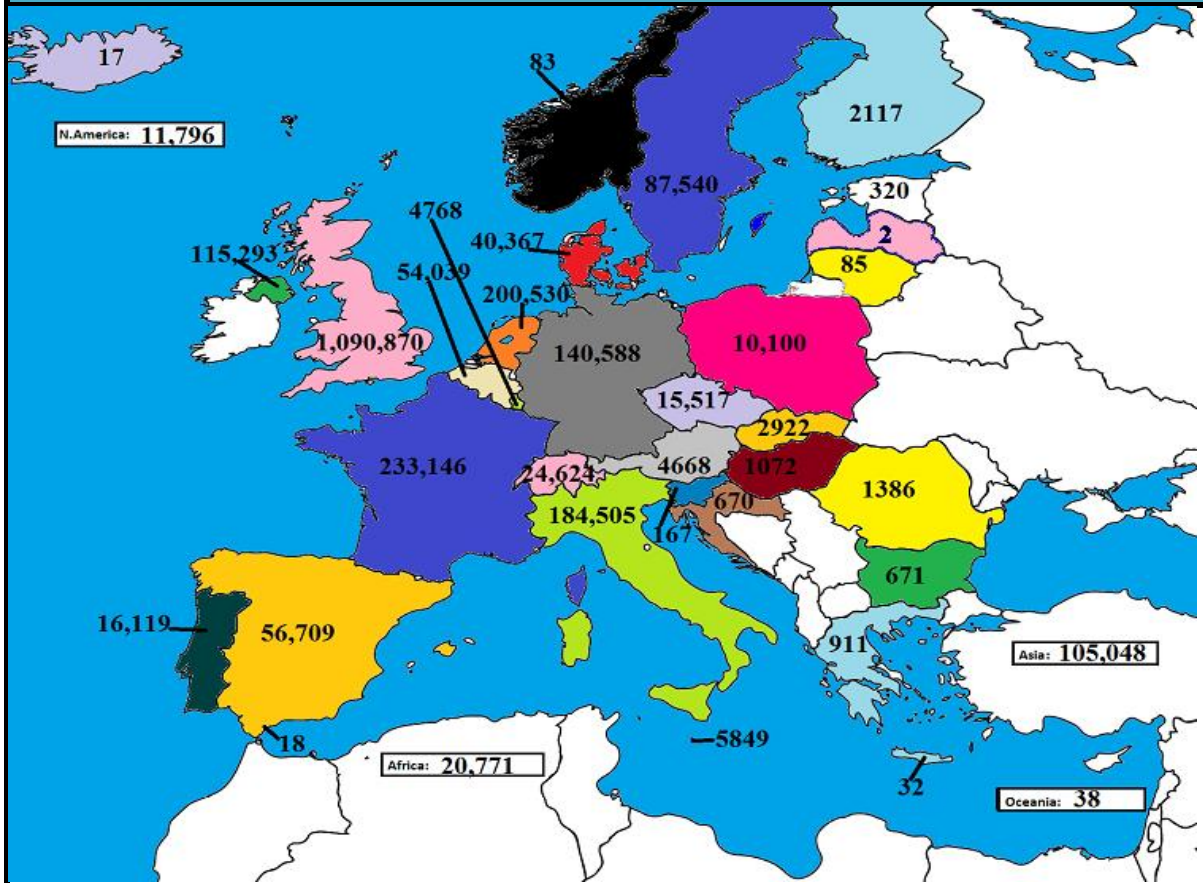
Kill vs Price



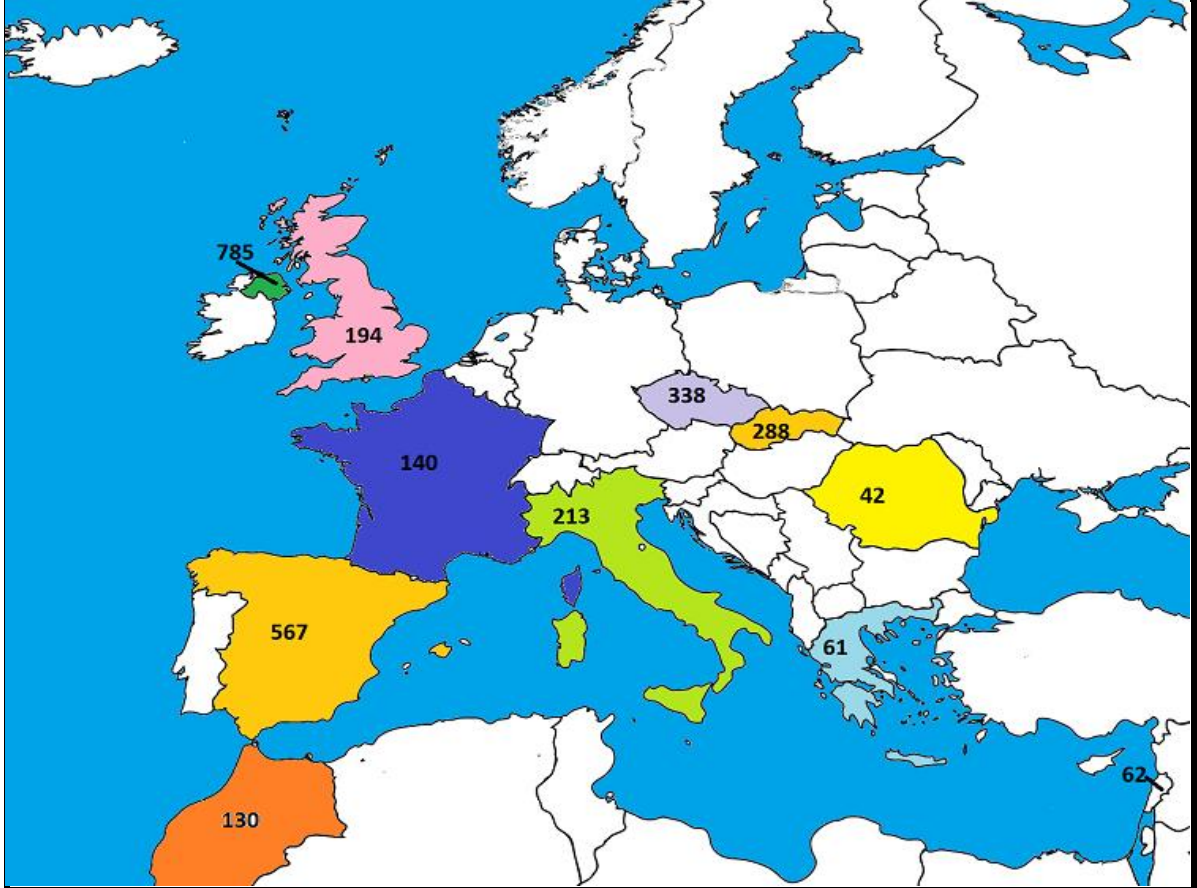
August 2019 Beef exports, €000 (CSO figures)



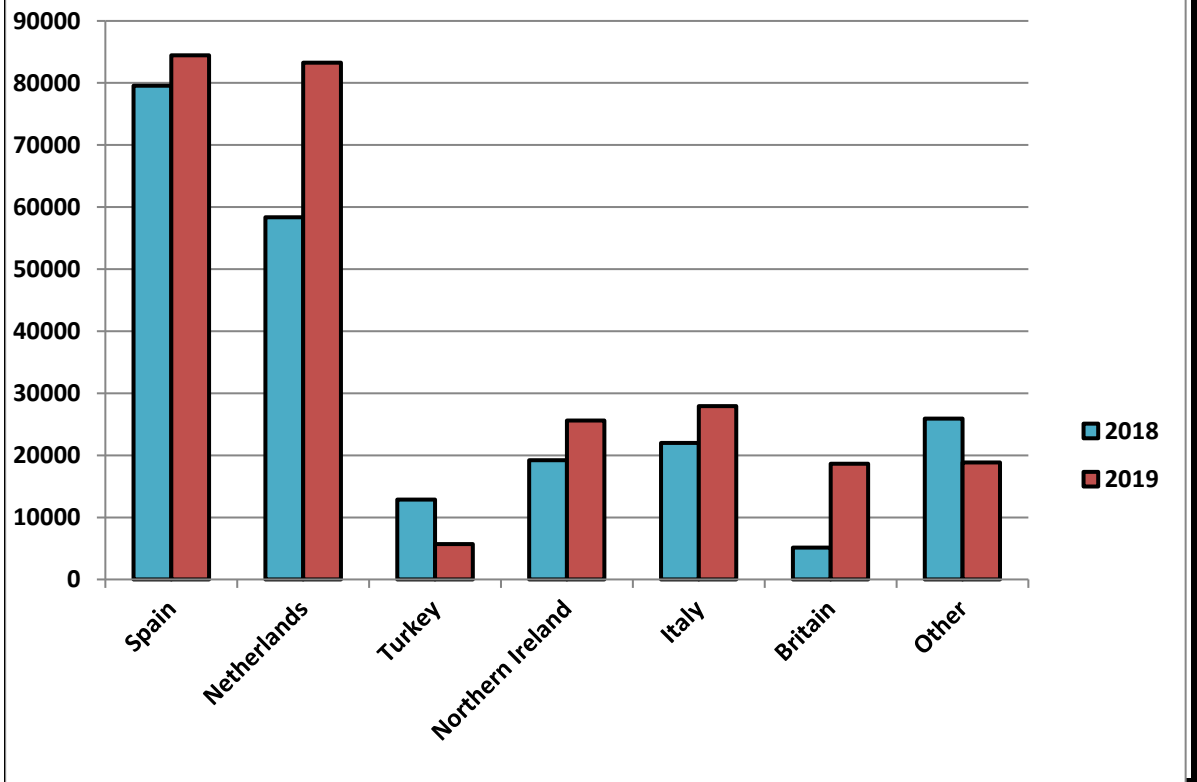
Cumulative beef exports to Dec 2018, €000 (CSO figures)



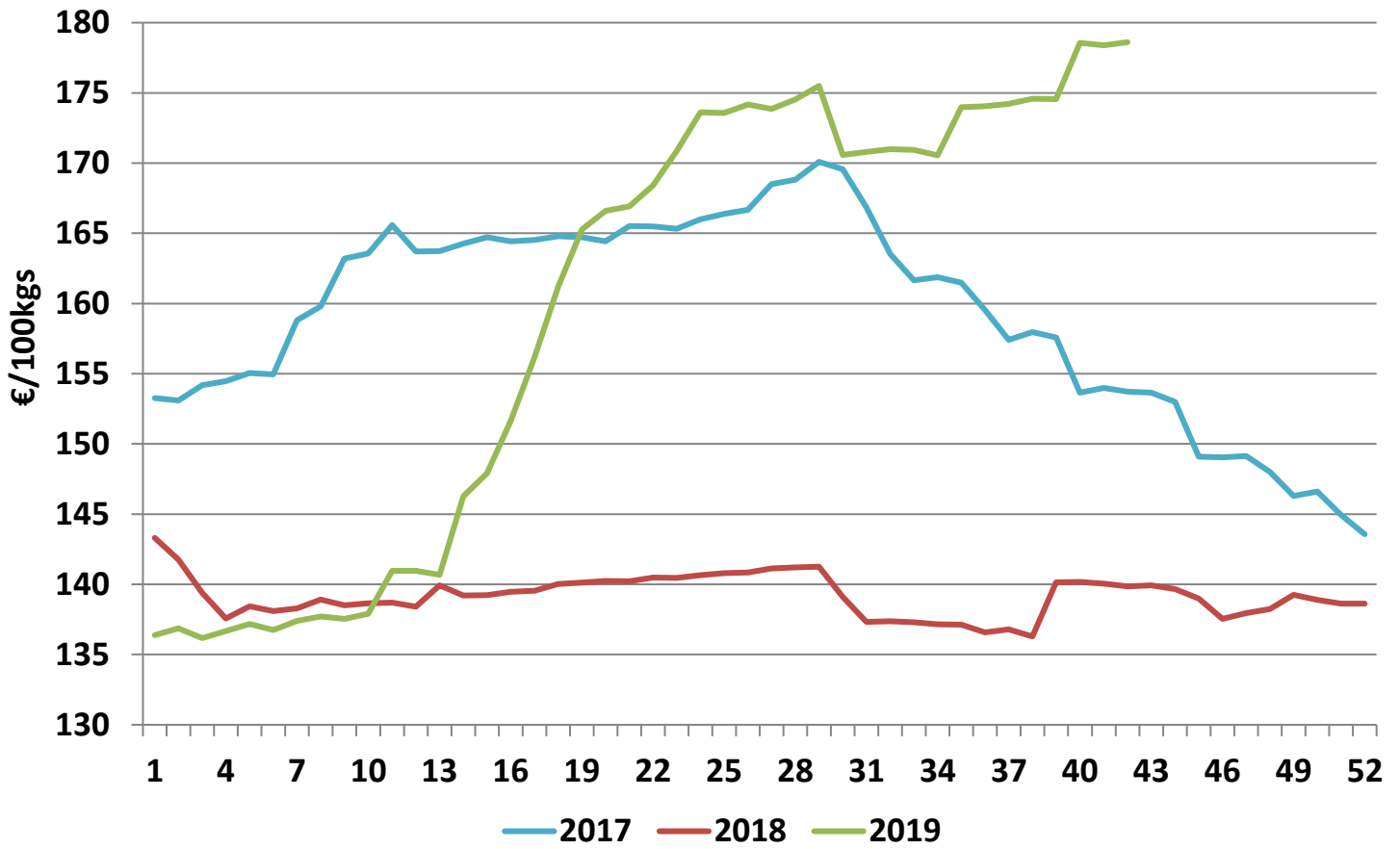
Cattle exported, w/c 14/10/19



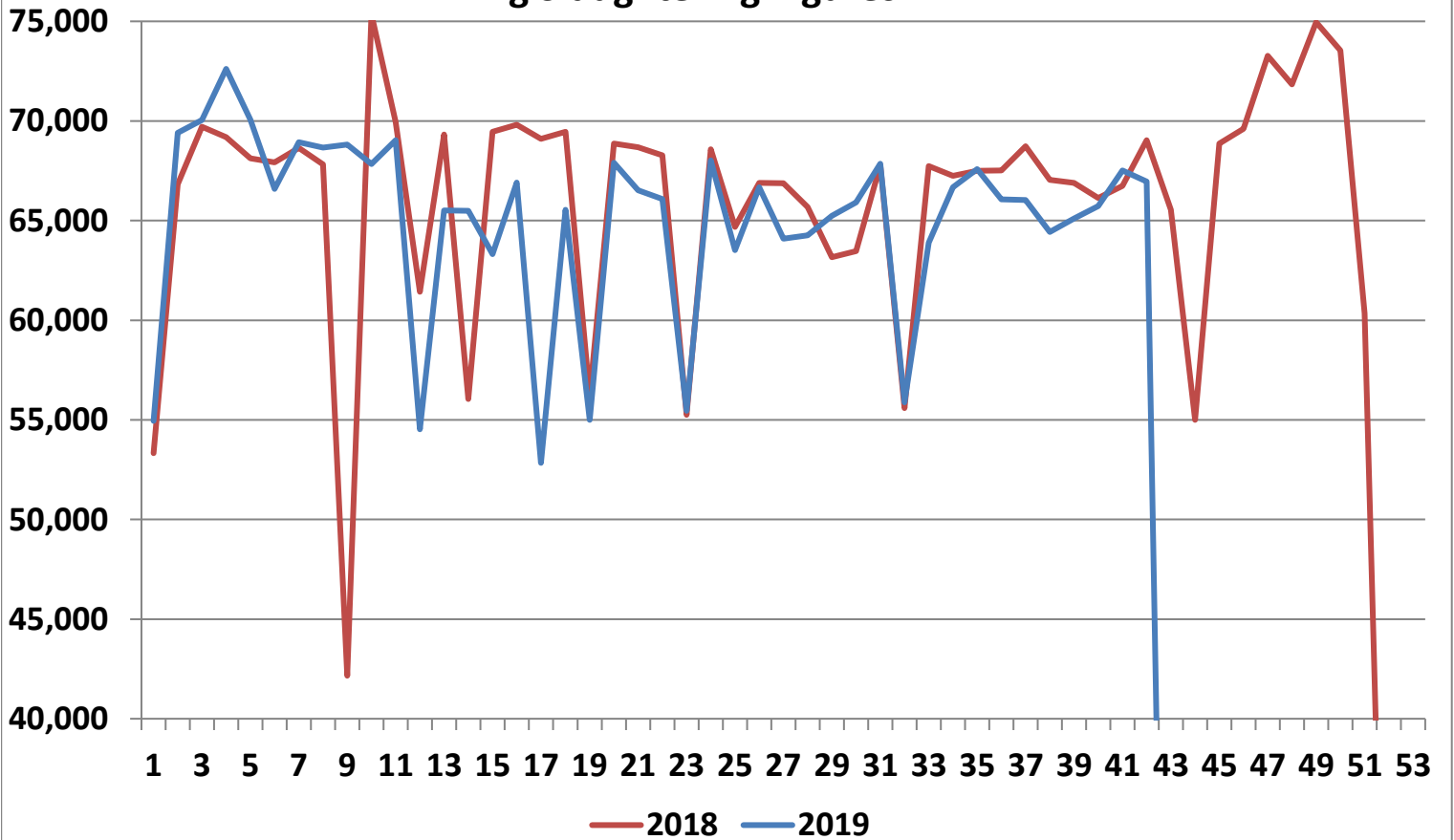
Cumulative cattle export figures, 2019



Average Grade E Pig Price



Pig Slaughtering Figures



Sheepmeat Information for Week 42

NOTE: EU PRICES
ARE PROVISIONAL AT
THE TIME OF
PUBLICATION AND
MAY NOT BE
REFLECTIVE OF THE
CURRENT PERIOD

Irish Prices €/100 kg	2019	2018	Change
Ave Factory Price	417.44	441.41	-5.4%
Ave Mart Price	384.16	382.33	0.5%
National Ave Price	407.46	423.69	-3.8%
YTD Ave	465.67	492.38	-5.4%

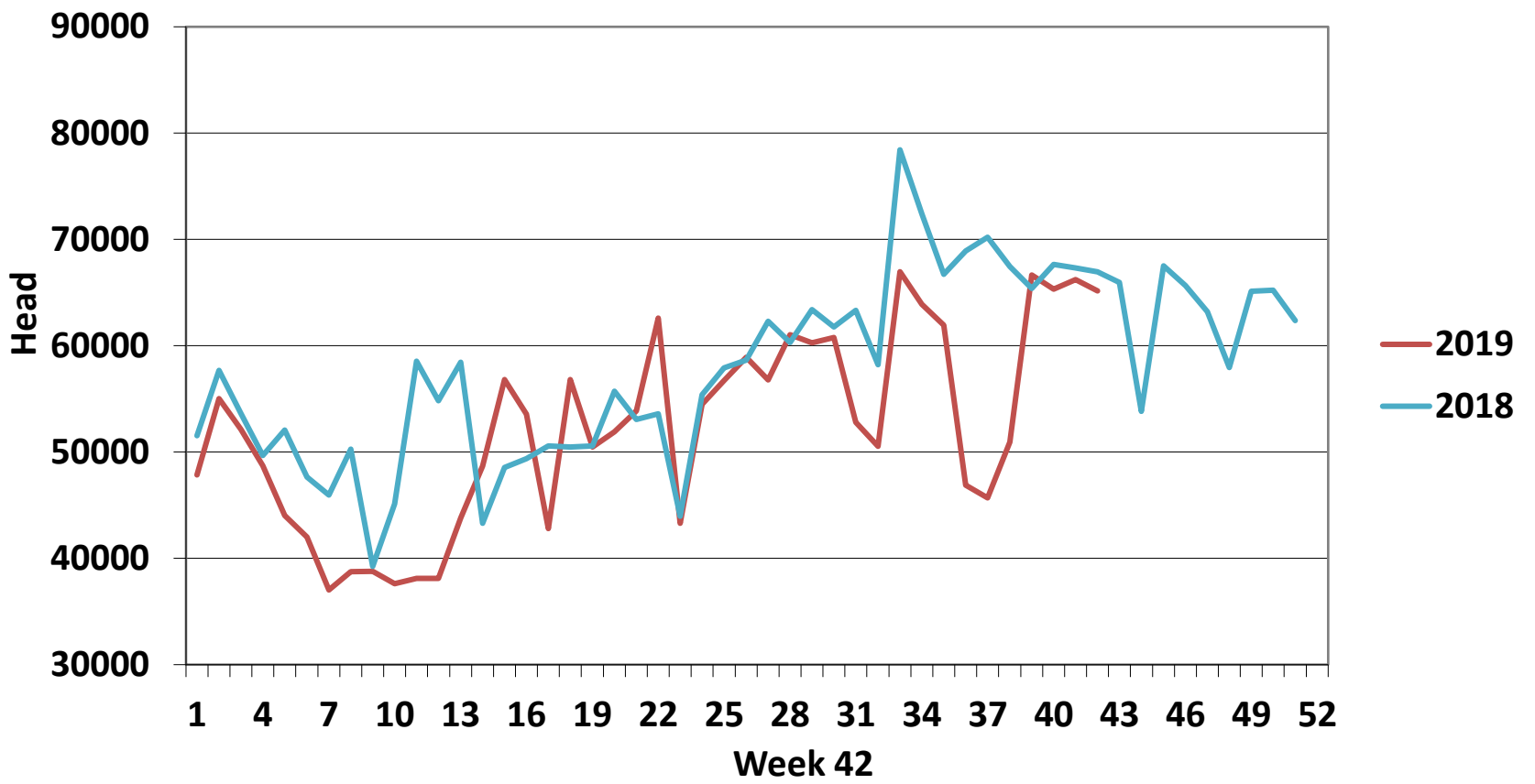
EU Market Rates Heavy Lambs	€/100kg
Belgium	459.5
Denmark	512.7
Germany	519.5
Spain	536.6
France	617.0
Croatia	541.5
Ireland	407.5
Italy	583.0
Cyprus	609.0
Latvia	321.8
Lithuania	368.9
Netherlands	476.7
Austria	562.0
Poland	429.6
Romania	189.9
Finland	414.4
Sweden	414.7
Northern Ireland	374.6
Great Britain	430.4
United Kingdom	426.4
Community	466.4

Slaughterings	2019	2018	Change
Weekly	65,156	66,959	-3%
YTD	2,194,652	2,396,629	-8%

**REPORT ON SLAUGHTERING AT SHEEP EXPORT PREMISES
WEEK 42**

CATEGORY	2019		2018		DIFFERENCE	
	Weekly	Cumulative	Weekly	Cumulative	Weekly	Cumulative
Lambs/Hoggets	105	738,414	157	829,126	-52	-90,712
Spring Lambs	53,979	1,130,620	55,178	1,158,736	-1,199	-28,116
Ewes and Rams	11,071	325,053	11,624	408,626	-553	-83,573
Light Lambs	1	565	-	141	1	424
TOTAL	65,156	2,194,652	66,959	2,396,629	-1,803	-201,977

Weekly Sheep Slaughtering



Ave. Price €/100 kg for Sheepmeat

