

Meat Market Report

21/10/19 - 27/10/19

Week

43



**An Roinn Talmhaíochta,
Bia agus Mara**

Department of Agriculture,
Food and the Marine

MARKET SUMMARY

Beef

Deadweight Prices c/100Kg (Including VAT)

	U3	U4	R3	R4	O3	O4	P+3
Steers	372.0	368.0	363.0	360.0	341.0	339.0	314.0
Heifers	385.0	380.0	373.0	369.0	356.0	353.0	309.0
Young Bulls	348.0	347.0	340.0	339.0	322.0	328.0	297.0
Cows			300.0	299.0	279.0	278.0	264.0

Liveweight Prices

*Bull Calf Average Price	€140.0 per head (Excluding VAT)
**Young Store Average Price	€204.0 per 100kg (Excluding VAT)
***Yearling (male & female) Price	€166.0 per 100kg (Excluding VAT)

* Aged 8-28 days ** Aged 180-364 days, Male & Female ***age 365-730 days

Slaughterings

37,863 cattle slaughtered this week, of which steers were 16,604 (44%), heifers 10,800 (29%), young bulls 2,882 (8%) and cows 7,080 (19%). Total YTD slaughter is 1,409,059 compared to 1,470,746 in 2018, a 4.2% decrease.

Live Trade

2,820 cattle were exported in the week commencing 14/10/2019, 1,843 to EU (Except NI). Live exports for 2019 amount to 266,225 compared to 221,507 in 2018, up 20% on 2018 levels.

*This data is provisional and subject to revision.

The next meeting of the Management Committee for the Common Organisation of Agricultural Markets (Animal Products Sector) is 21st November 2019

CONTENTS:

Page 2: Market Summary Beef
 Page 3: Market Summary Other Meats
 Page 4: Beef Price and Slaughter Summary
 Page 5: Comparative Beef Prices
 Page 6: Steer and Young Bull Price
 Page 7: Heifer and Cow Graphs
 Page 8: Price and Slaughter Graphs
 Page 9: Liveweight Beef Graphs

Page 10: Beef Export Maps
 Page 11: Beef Export Info
 Page 12: Pig price and slaughter graphs
 Page 13: Sheep prices and slaughter
 Page 15: Sheep price and slaughter graphs

MARKET SUMMARY

Pigmeat

Grade E Pig
Prices (Ex.
VAT)

The Grade E Pig price for week commencing 21/10/2019 was €178.82 per 100Kg compared to €139.93 in the same week last year, which represents a 28% increase.

Slaughtering

64,200 pigs were slaughtered in week 43 of which 1,746 were sows. The cumulative figure for pig slaughterings in 2019 is 2,798,679 which is a 1% decrease with the same point last year.

Sheepmeat

Sheepmeat
Prices (Ex.
VAT)

The national average price for the week commencing 21/10/2019 was €403.24 per 100Kg, a decrease of 6% over the same week last year.

Slaughtering

62,784 sheep were slaughtered at sheep export premises the week commencing 21/10/2019, compared to 65,943 in the same week of 2018. Sheep slaughterings for 2019 are 8% down on 2018 at 2,257,436 head.

Live Trade

Total live exports to European Countries stood at 6,227 head to the end of August 2019.

Poultry

Slaughtering

Cumulative poultry slaughterings for 2019* stand at 85,735,749 birds at the end of week 42, up 8% compared to the same period last year.

*Latest Figures are provisional and subject to change

Dead Weight Prices	W/C	W/C	Same week 2018	% change prev week	% change 2018
	21/10/19	14/10/19	22/10/18		
Steers (R3) (c/kg)	344.1	344.8	366.5	-0.2%	-6.1%
Heifers (R3) (c/kg)	354.3	354.9	378.7	-0.2%	-6.5%
Young Bulls (U3) (c/kg)	330.3	331.9	374.2	-0.5%	-11.7%
Cows (04) (c/kg)	264.2	268.6	298.0	-1.6%	-11.3%

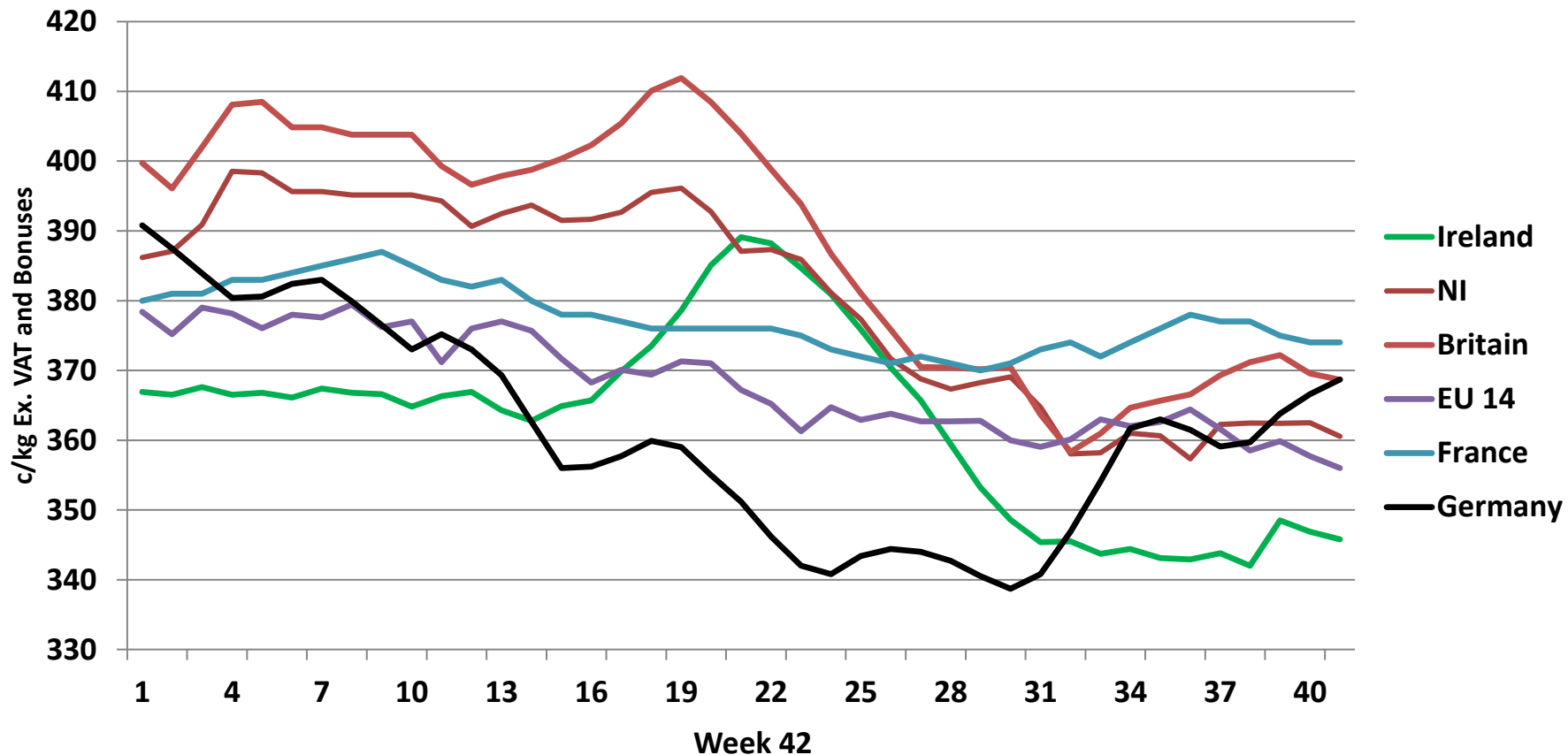
Live Weight Prices	W/C	W/C	Same week 2018	% change previous week	% change 2018
	21/10/19	14/10/19	22/10/18		
Yearlings (Male) (Aged 365 - 730 days) - (€/100Kg)	161	173	182	-6.9%	-11.5%
Yearlings (Female) (Aged 365 - 730 days) - (€/100Kg)	171	179	186	-4.5%	-8.1%
Young Stores (Male & Female) (Aged 180 - 364 days) - (€/100Kg)	204	207	219	-1.4%	-6.8%
Bull Calf (€/head) Dairy	77.6	91.5	102.3	-15.1%	-24.1%
Bull Calf (€/head) Beef	202.1	198.1	220.0	2.0%	-8.2%
Bull Calf (€/head) Average	139.8	144.8	161.2	-3.4%	-13.2%

Slaughter Figures	% of weekly figures	W/C	Same week 2018	Year to Date		Change 2019 v 2018	
		21-Oct-19		2019	2018	Head	%
Steers	43.9%	16,604	15,102	506,501	554,961	-48,460	-8.7%
Cows	18.7%	7,080	8,853	284,710	326,744	-42,034	-12.9%
Heifers	28.5%	10,800	9,592	412,600	396,242	16,358	4.1%
Young Bulls	7.6%	2,882	2,932	175,273	166,022	9,251	5.6%
Mature Bulls	1.3%	497	481	29,975	26,777	3,198	11.9%
Total	100%	37,863	36,960	1,409,059	1,470,746	-61,687	-4.2%

821

Live Exports	W/C	Same week	W/C	Year to Date		Change 2019 v 2018	
	14-Oct-19	2018	07-Oct-19	2019	2018	Head	%
Northern Ireland	785	1,173	607	25,801	17,394	8,407	48%
EU Except NI	1,843	2,129	2,685	226,808	186,092	40,716	22%
Third Countries	192	0	0	13,616	18,021	-4,405	-
Total	2,820	3,302	3,292	266,225	221,507	44,718	20%
Calves YTD:	194,114			Adult YTD:Cattle		71,974	

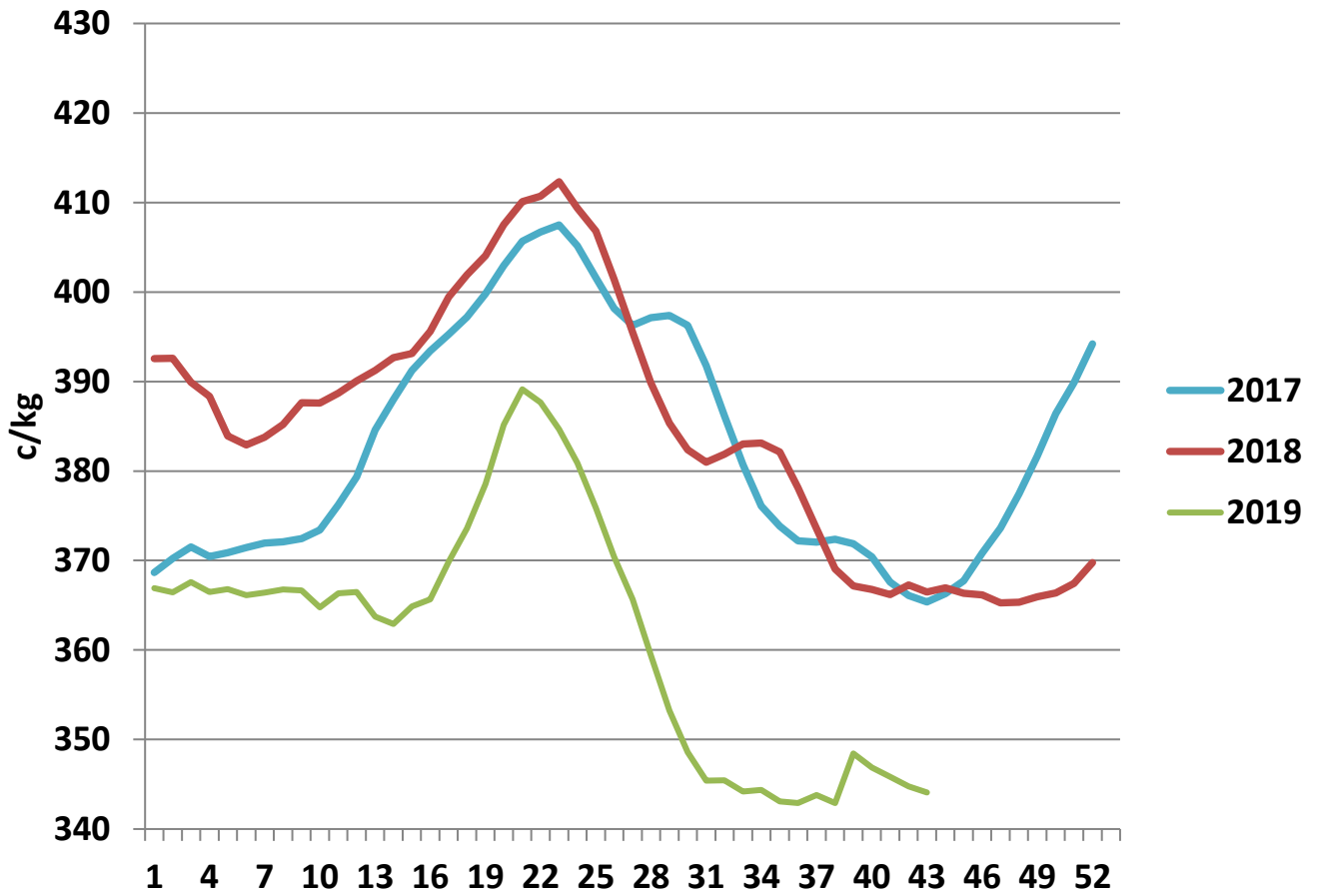
Irish Deadweight Cattle Prices vs Selected Other Markets, 2019



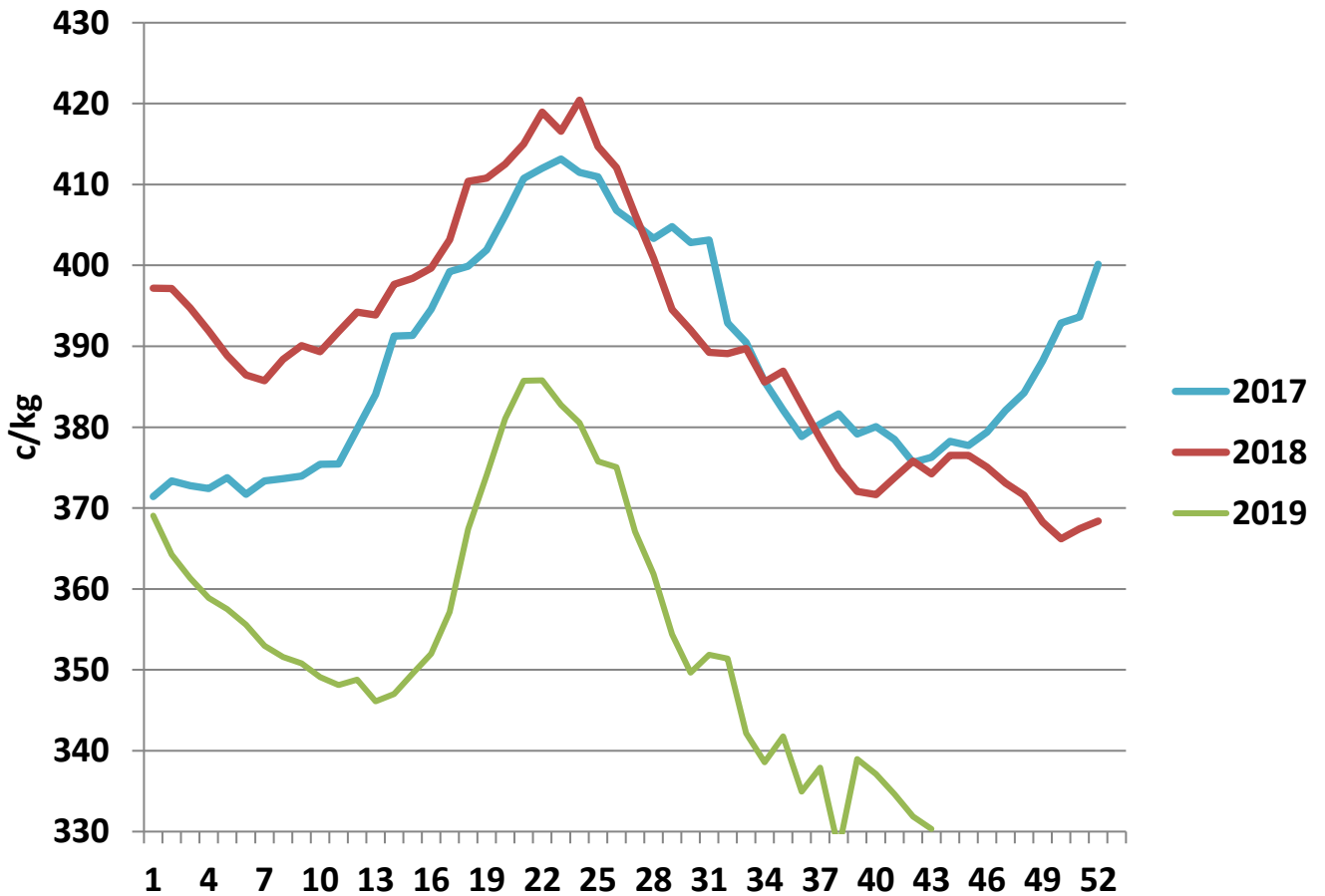
Livestock Pricing

	Ireland	NI	Britain	EU 14 Average	France	Germany
W/C 14/10/19	344.9	370.05	377.88	357.63	373	369.1

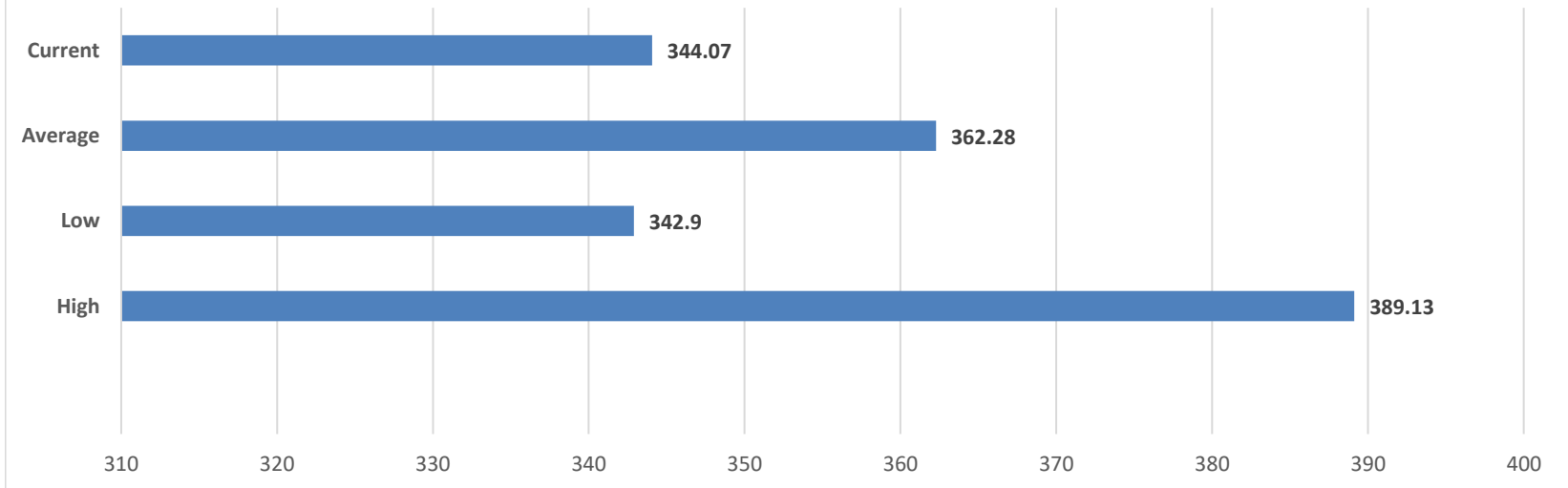
R3 Steer prices ex. VAT



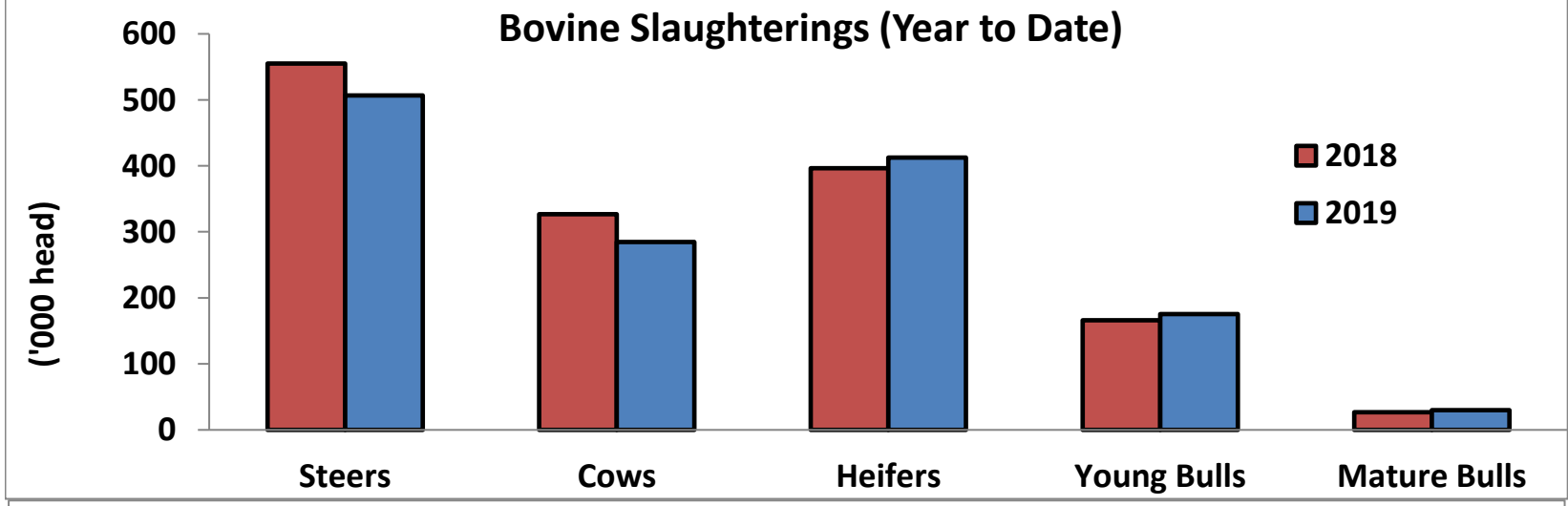
U3 Young Bull prices ex. VAT



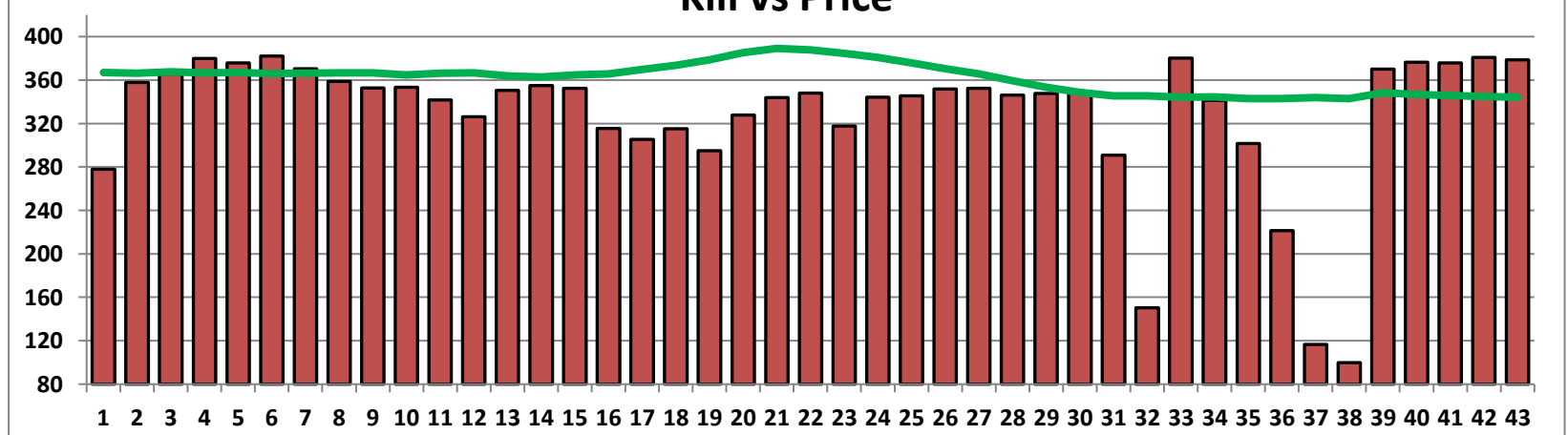
6 Month R3 Steer Statistics



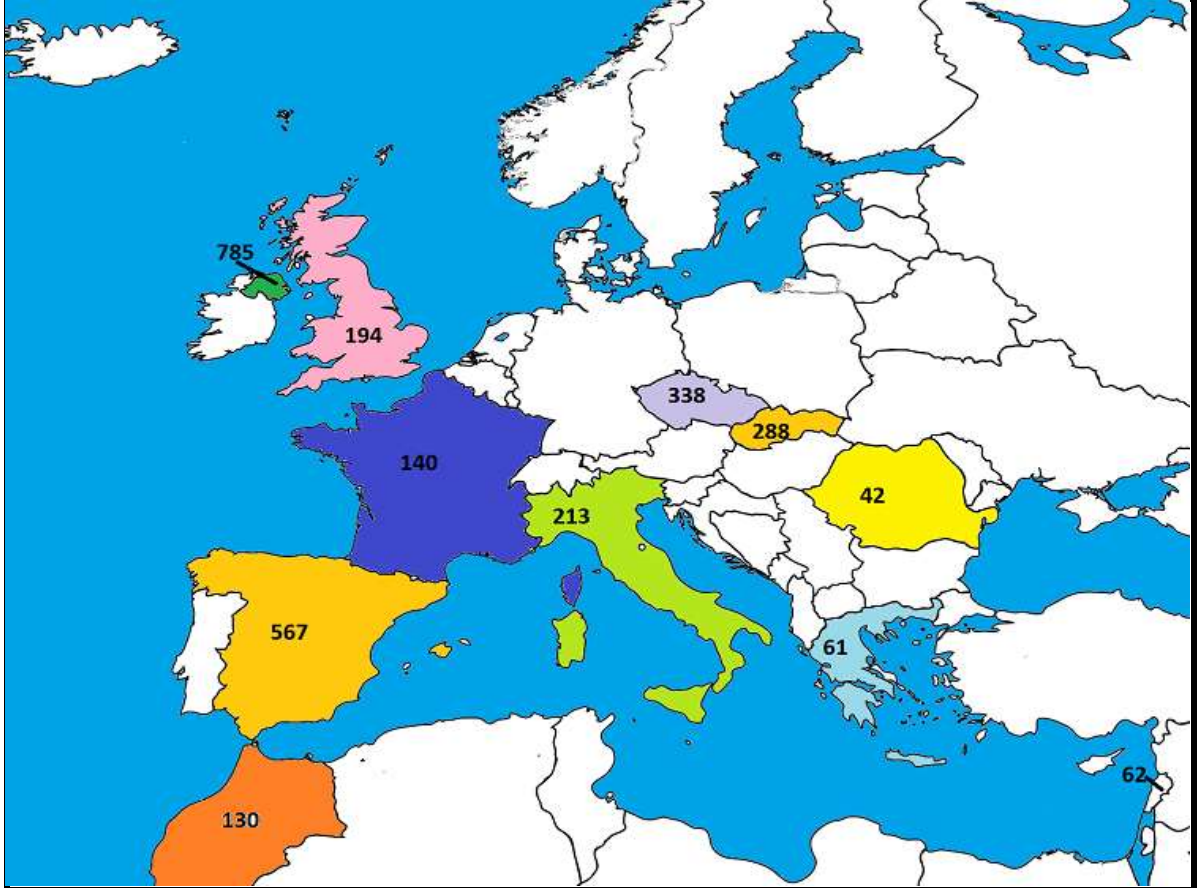
Bovine Slaughtering (Year to Date)



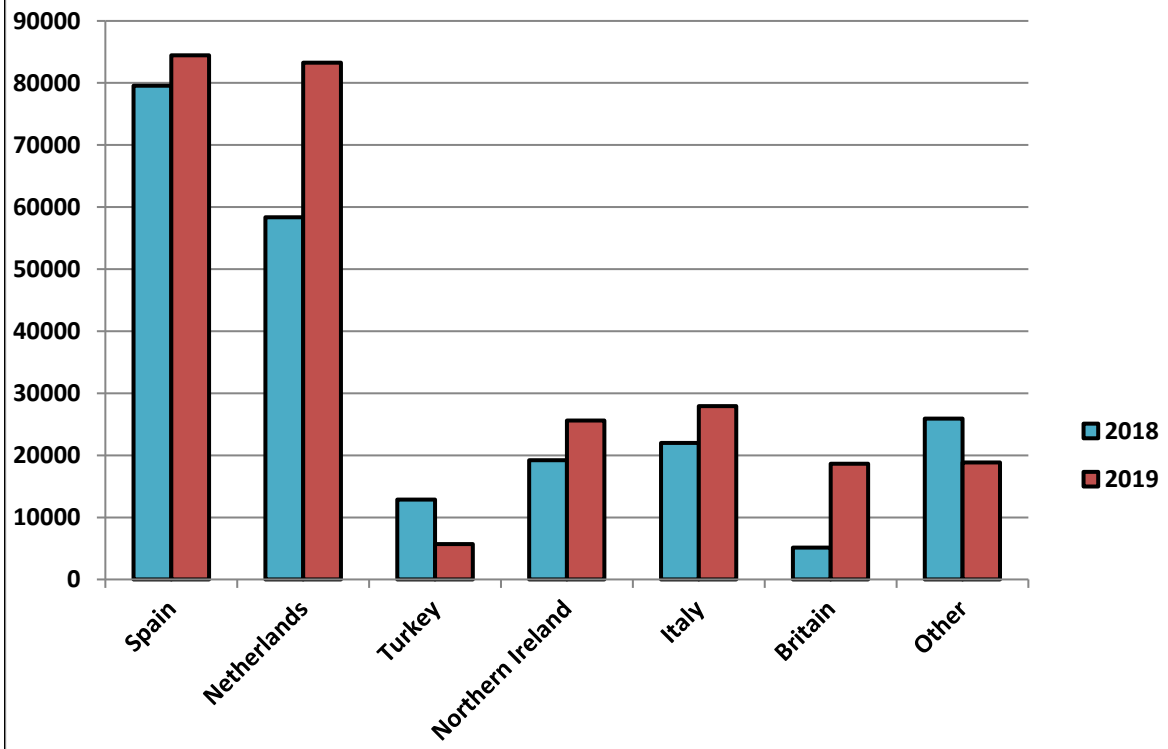
Kill vs Price



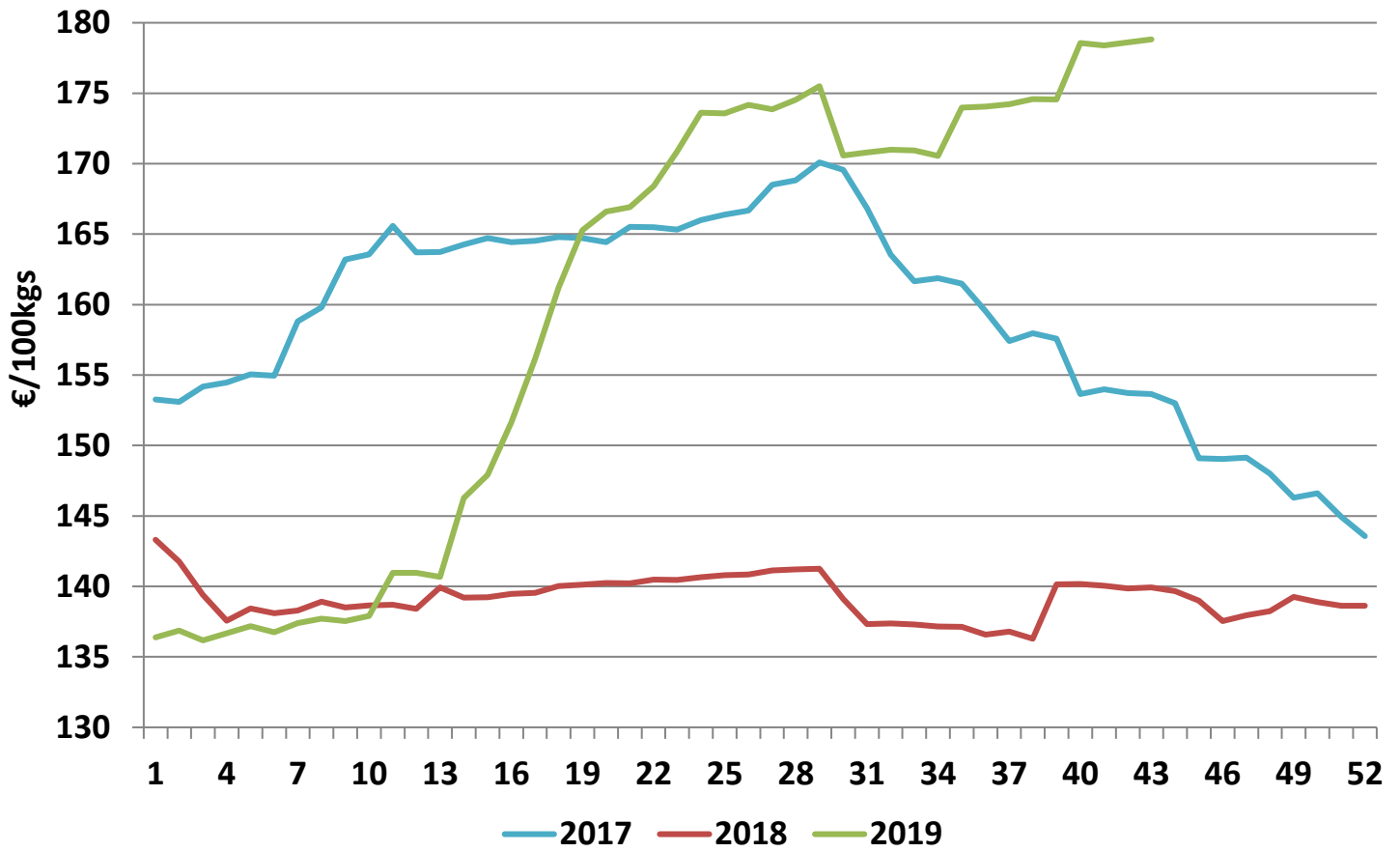
Cattle exported, w/c 14/10/19



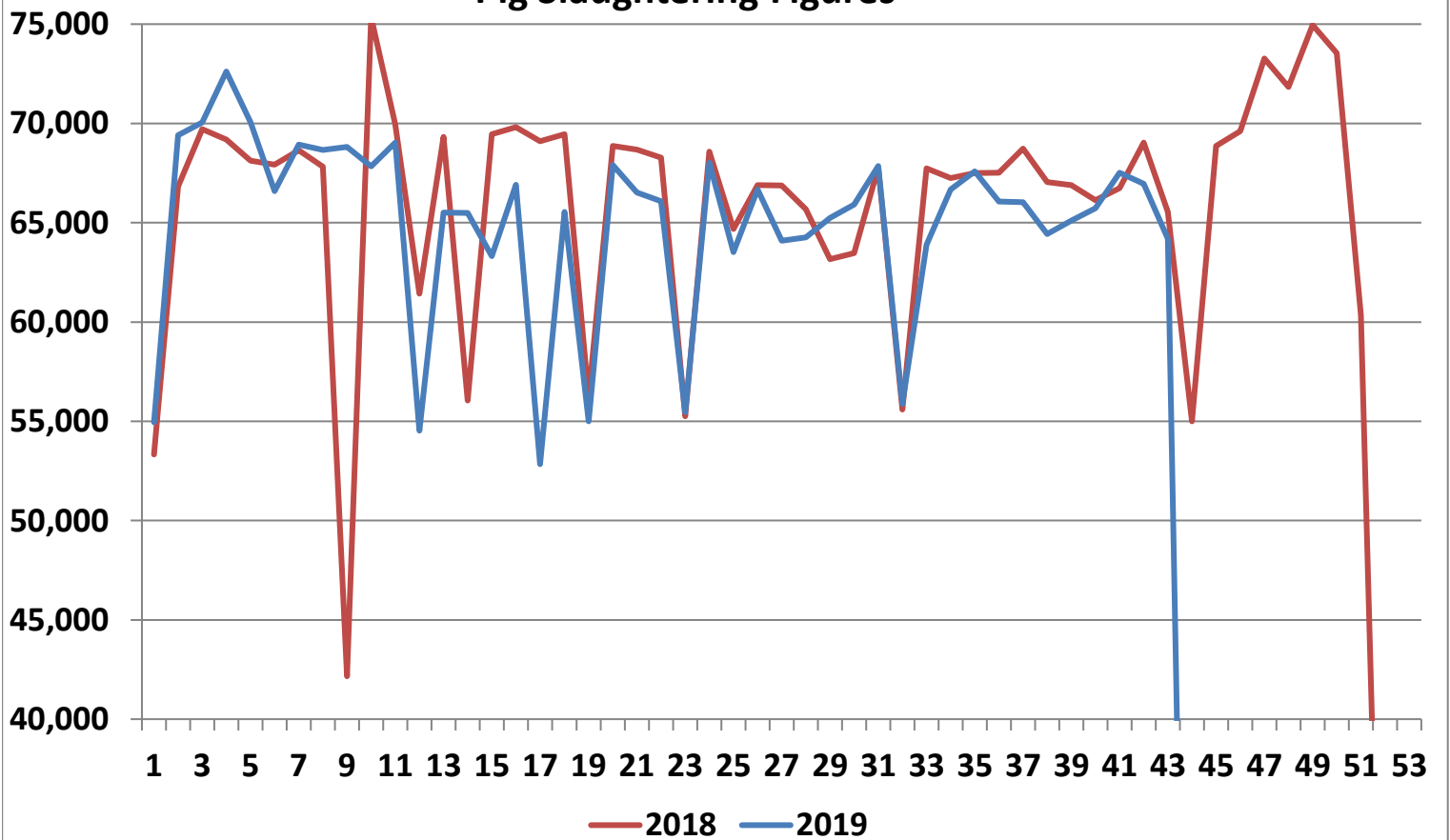
Cumulative cattle export figures, 2019



Average Grade E Pig Price



Pig Slaughtering Figures



Sheepmeat Information for Week 43

NOTE: EU PRICES
ARE PROVISIONAL AT
THE TIME OF
PUBLICATION AND
MAY NOT BE
REFLECTIVE OF THE
CURRENT PERIOD

Irish Prices €/100 kg	2019	2018	Change
Ave Factory Price	422.68	443.83	-4.8%
Ave Mart Price	357.88	390.20	-8.3%
National Ave Price	403.24	427.74	-5.7%
YTD Ave	464.22	490.87	-5.4%

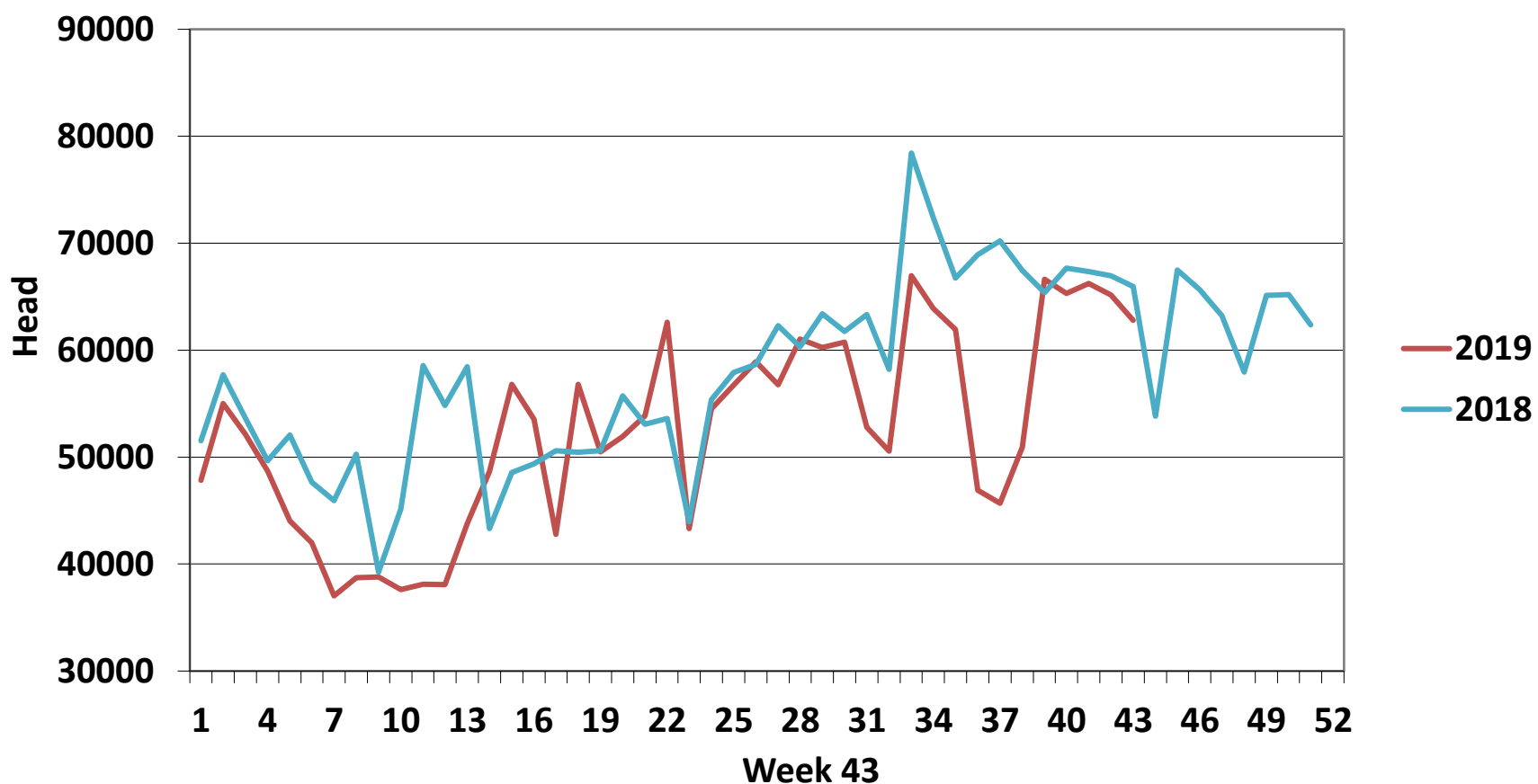
EU Market Rates Heavy Lambs	€/100kg
Belgium	461.8
Denmark	512.7
Germany	524.1
Spain	539.1
France	619.0
Croatia	547.7
Ireland	403.2
Italy	582.0
Cyprus	601.0
Latvia	356.9
Lithuania	444.6
Netherlands	479.1
Austria	566.0
Poland	429.6
Romania	187.7
Finland	401.0
Sweden	415.2
Northern Ireland	377.4
Great Britain	432.6
United Kingdom	428.7
Community	467.9

Slaughterings	2019	2018	Change
Weekly	62,784	65,943	-5%
YTD	2,257,436	2,462,572	-8%

**REPORT ON SLAUGHTERING AT SHEEP EXPORT PREMISES
WEEK 43**

CATEGORY	2019		2018		DIFFERENCE	
	Weekly	Cumulative	Weekly	Cumulative	Weekly	Cumulative
Lambs/Hoggets	93	738,507	77	829,203	16	90,696
Spring Lambs	53,337	1,183,957	55,576	1,214,312	-2,239	30,355
Ewes and Rams	9,348	334,401	10,290	418,916	-942	84,515
Light Lambs	6	571	-	141	6	430
TOTAL	62,784	2,257,436	65,943	2,462,572	-3,159	-205,136

Weekly Sheep Slaughtering



Ave. Price €/100 kg for Sheepmeat

