

Meat Market Report

11/11/19 - 17/11/19

Week

46



**An Roinn Talmhaíochta,
Bia agus Mara**

Department of Agriculture,
Food and the Marine

MARKET SUMMARY

Beef

Deadweight Prices c/100Kg (Including VAT)

	U3	U4	R3	R4	O3	O4	P+3
Steers	369.0	366.0	362.0	358.0	341.0	339.0	314.0
Heifers	382.0	378.0	370.0	369.0	355.0	353.0	311.0
Young Bulls	348.0	338.0	338.0	334.0	319.0	319.0	308.0
Cows			293.0	292.0	271.0	270.0	256.0

Liveweight Prices

*Bull Calf Average Price	€163.9 per head (Excluding VAT)
**Young Store Average Price	€199.0 per 100kg (Excluding VAT)
***Yearling (male & female) Price	€167.5 per 100kg (Excluding VAT)

* Aged 8-28 days ** Aged 180-364 days, Male & Female ***age 365-730 days

Slaughterings

38,990 cattle slaughtered this week, of which steers were 15,844 (41%), heifers 11,472 (29%), young bulls 3,494 (9%) and cows 7,580 (19%). Total YTD slaughter is 1,521,229 compared to 1,584,557 in 2018, a 4% decrease.

Live Trade

5,745 cattle were exported in the week commencing 04/11/2019, 2,799 to EU (Except NI). Live exports for 2019 amount to 279,119 compared to 230,356 in 2018, up 21% on 2018 levels.

*This data is provisional and subject to revision.

The next meeting of the Management Committee for the Common Organisation of Agricultural Markets (Animal Products Sector) is 21st November 2019

CONTENTS:

Page 2: Market Summary Beef
 Page 3: Market Summary Other Meats
 Page 4: Beef Price and Slaughter Summary
 Page 5: Comparative Beef Prices
 Page 6: Steer and Young Bull Price
 Page 7: Heifer and Cow Graphs
 Page 8: Price and Slaughter Graphs
 Page 9: Liveweight Beef Graphs

Page 10: Beef Export Maps
 Page 11: Beef Export Info
 Page 12: Pig price and slaughter graphs
 Page 13: Sheep prices and slaughter
 Page 15: Sheep price and slaughter graphs

MARKET SUMMARY

Pigmeat

Grade E Pig
Prices (Ex.
VAT)

The Grade E Pig price for week commencing 11/11/2019 was €186.80 per 100Kg compared to €137.54 in the same week last year, which represents a 36% increase.

Slaughtering

68,248 pigs were slaughtered in week 46 of which 2,015 were sows. The cumulative figure for pig slaughterings in 2019 is 2,991,573 which is a 1% decrease with the same point last year.

Sheepmeat

Sheepmeat
Prices (Ex.
VAT)

The national average price for the week commencing 11/11/2019 was €422.13 per 100Kg, a decrease of 2% over the same week last year.

Slaughtering

57,118 sheep were slaughtered at sheep export premises the week commencing 11/11/2019, compared to 65,662 in the same week of 2018. Sheep slaughterings for 2019 are 8% down on 2018 at 2,430,108 head.

Live Trade

Total live exports to European Countries stood at 6,227 head to the end of August 2019.

Poultry

Slaughtering

Cumulative poultry slaughterings for 2019* stand at 94,024,451 birds at the end of week 46, up 8% compared to the same period last year.

*Latest Figures are provisional and subject to change

Dead Weight Prices	W/C	W/C	Same week 2018	% change prev week	% change 2018
	11/11/19	04/11/19	12/11/18		
Steers (R3) (c/kg)	343.3	343.4	366.2	0.0%	-6.2%
Heifers (R3) (c/kg)	351.2	351.6	378.5	-0.1%	-7.2%
Young Bulls (U3) (c/kg)	330.1	328.5	375.1	0.5%	-12.0%
Cows (04) (c/kg)	256.6	258.9	286.3	-0.9%	-10.4%

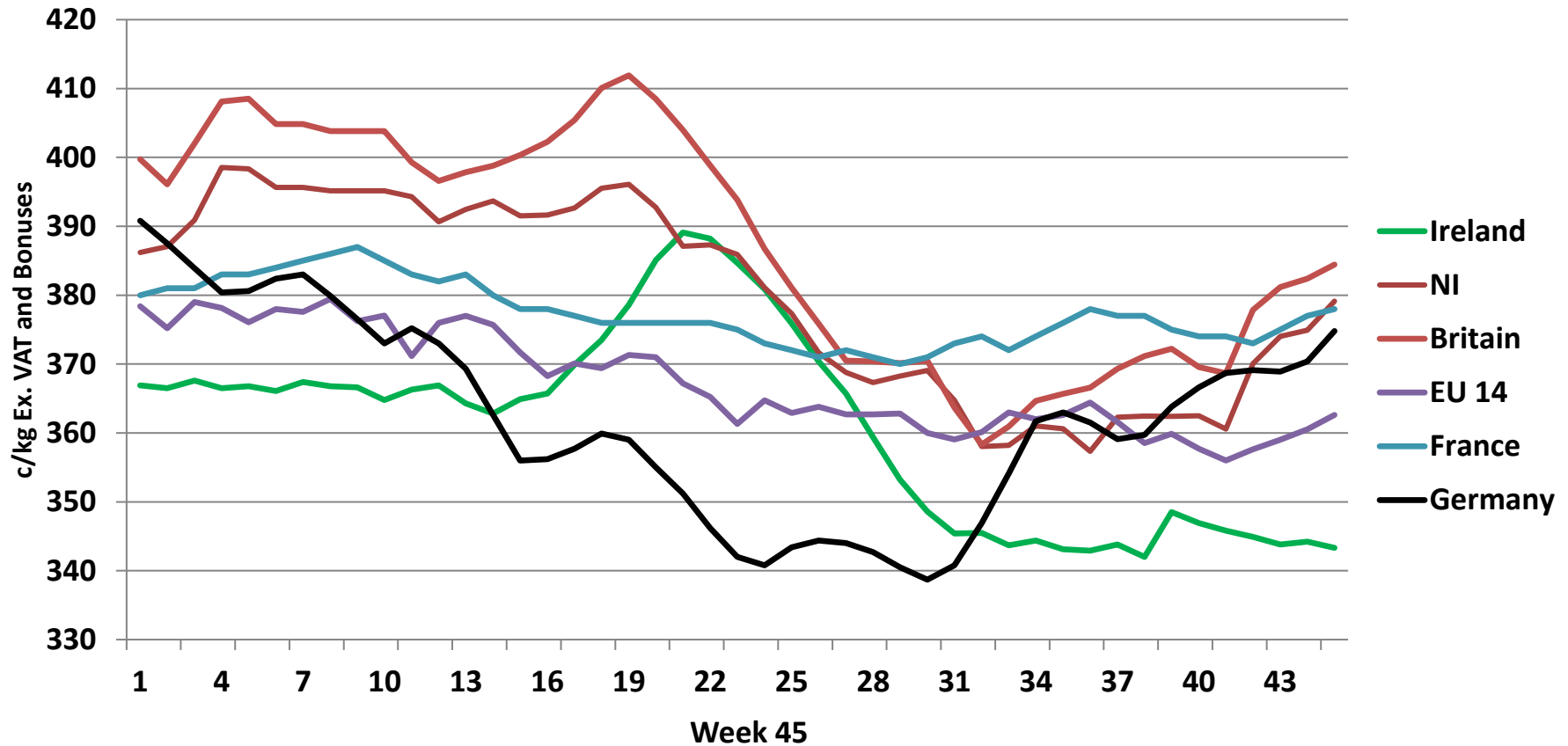
Live Weight Prices	W/C	W/C	Same week 2018	% change previous week	% change 2018
	11/11/19	04/11/19	12/11/18		
Yearlings (Male) (Aged 365 - 730 days) - (€/100Kg)	164	166	176	-1.2%	-6.8%
Yearlings (Female) (Aged 365 - 730 days) - (€/100Kg)	171	172	179	-0.6%	-4.5%
Young Stores (Male & Female) (Aged 180 - 364 days) - (€/100Kg)	199	199	209	0.0%	-4.8%
Bull Calf (€/head) Dairy	90.7	71.7	100.0	26.5%	-9.3%
Bull Calf (€/head) Beef	237.2	166.6	202.4	42.3%	17.2%
Bull Calf (€/head) Average	163.9	119.2	151.2	37.6%	8.4%

Slaughter Figures	% of weekly figures	W/C	Same week 2018	Year to Date		Change 2019 v 2018	
		11-Nov-19		2019	2018	Head	%
Steers	40.6%	15,844	12,960	553,363	600,187	-46,824	-7.8%
Cows	19.4%	7,580	8,810	306,779	352,890	-46,111	-13.1%
Heifers	29.4%	11,472	11,281	444,847	426,734	18,113	4.2%
Young Bulls	9.0%	3,494	3,407	184,629	176,632	7,997	4.5%
Mature Bulls	1.5%	600	526	31,611	28,114	3,497	12.4%
Total	100%	38,990	36,984	1,521,229	1,584,557	-63,328	-4.0%

821

Live Exports	W/C	Same week	W/C	Year to Date		Change 2019 v 2018	
	4-Nov-19	2018	28-Oct-19	2019	2018	Head	%
Northern Ireland	913	829	907	28,369	20,105	8,264	41%
EU Except NI	2,799	1,985	755	232,280	191,927	40,353	21%
Third Countries	2,033	0	2,821	18,470	18,324	146	-
Total	5,745	2,814	4,483	279,119	230,356	48,763	21%
Calves YTD:	196,388			Adult YTD:Cattle		82,591	

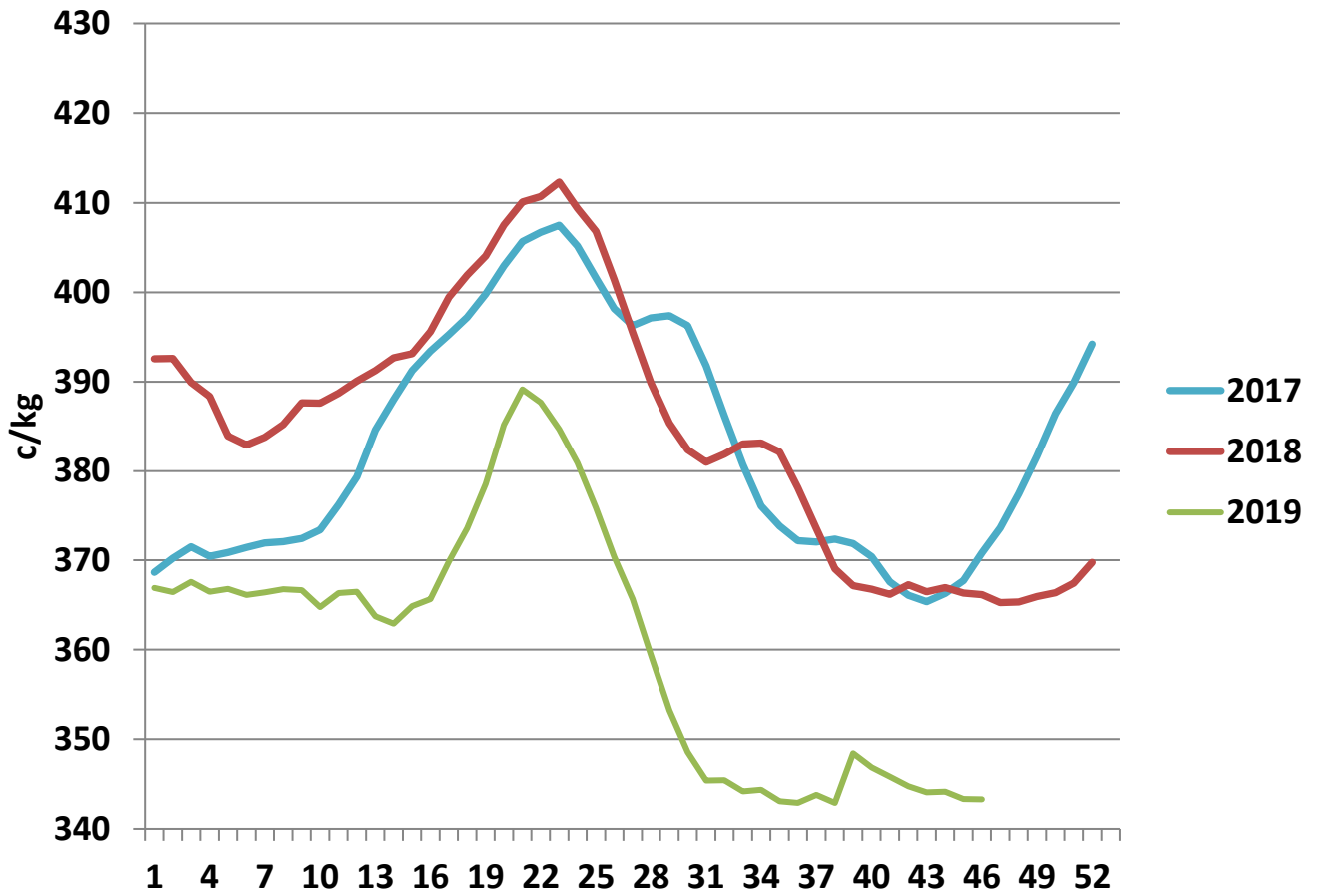
Irish Deadweight Cattle Prices vs Selected Other Markets, 2019



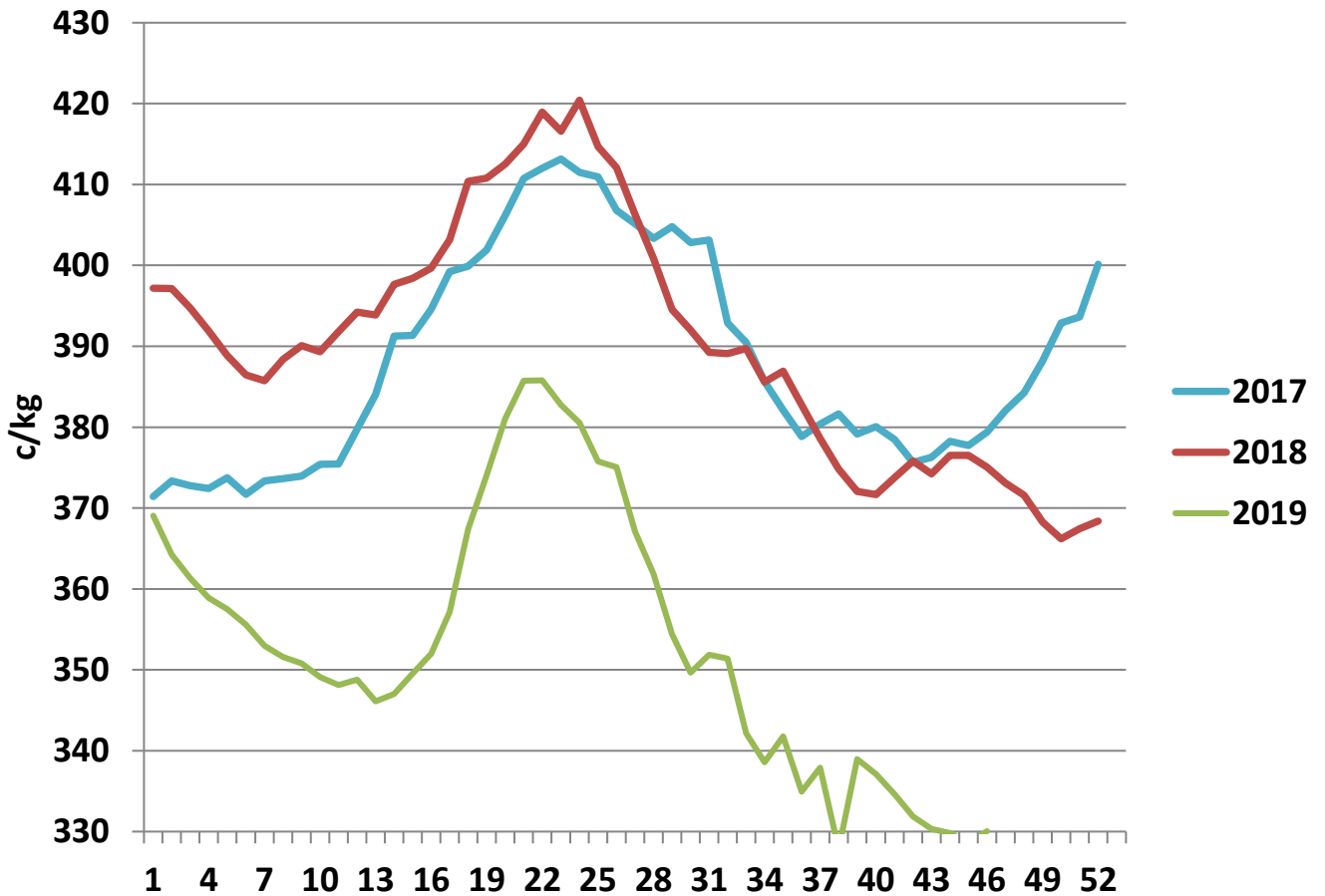
Livestock Pricing

	Ireland	NI	Britain	EU 14 Average	France	Germany
04/11/2019	343	379	384	363	378	375

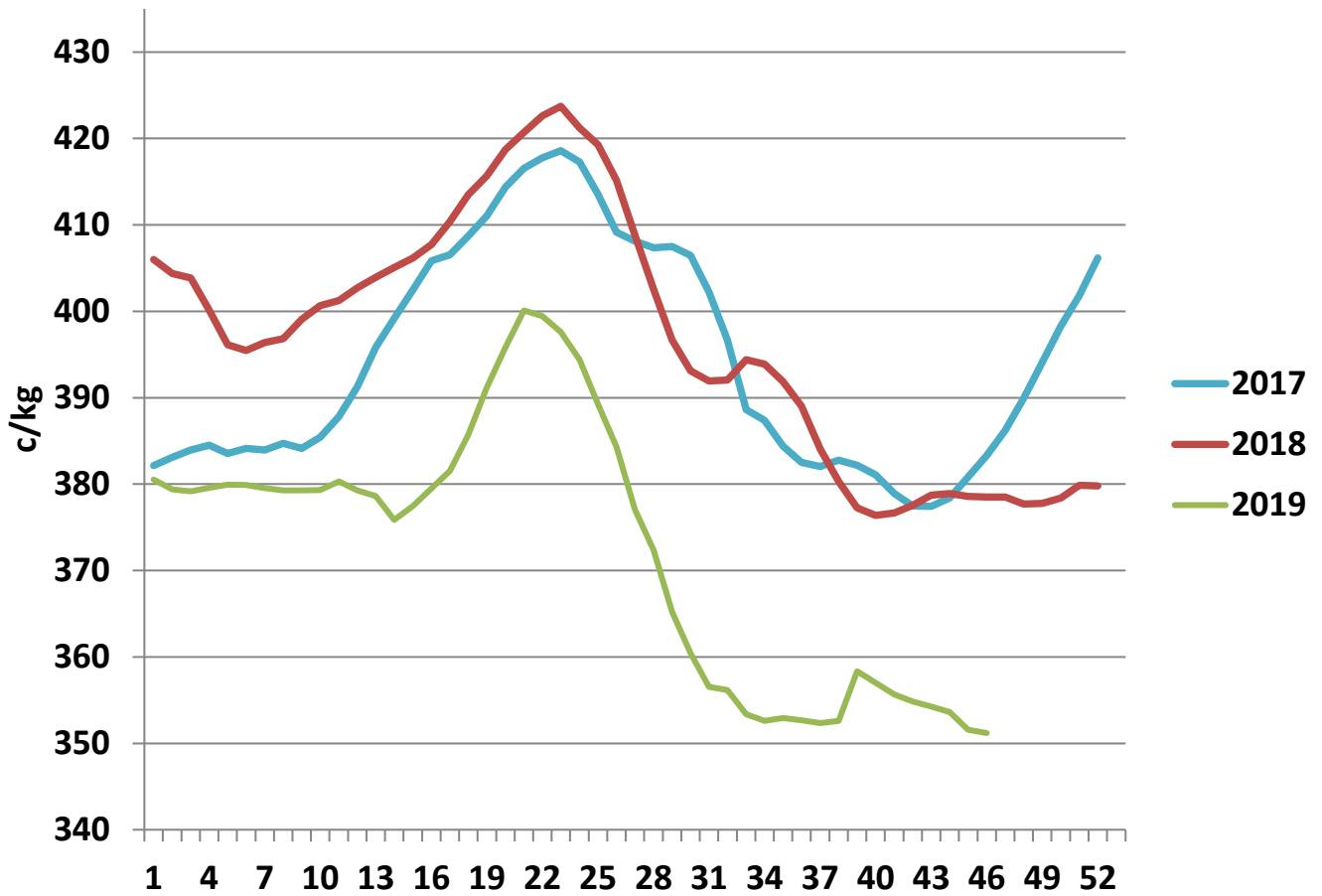
R3 Steer prices ex. VAT



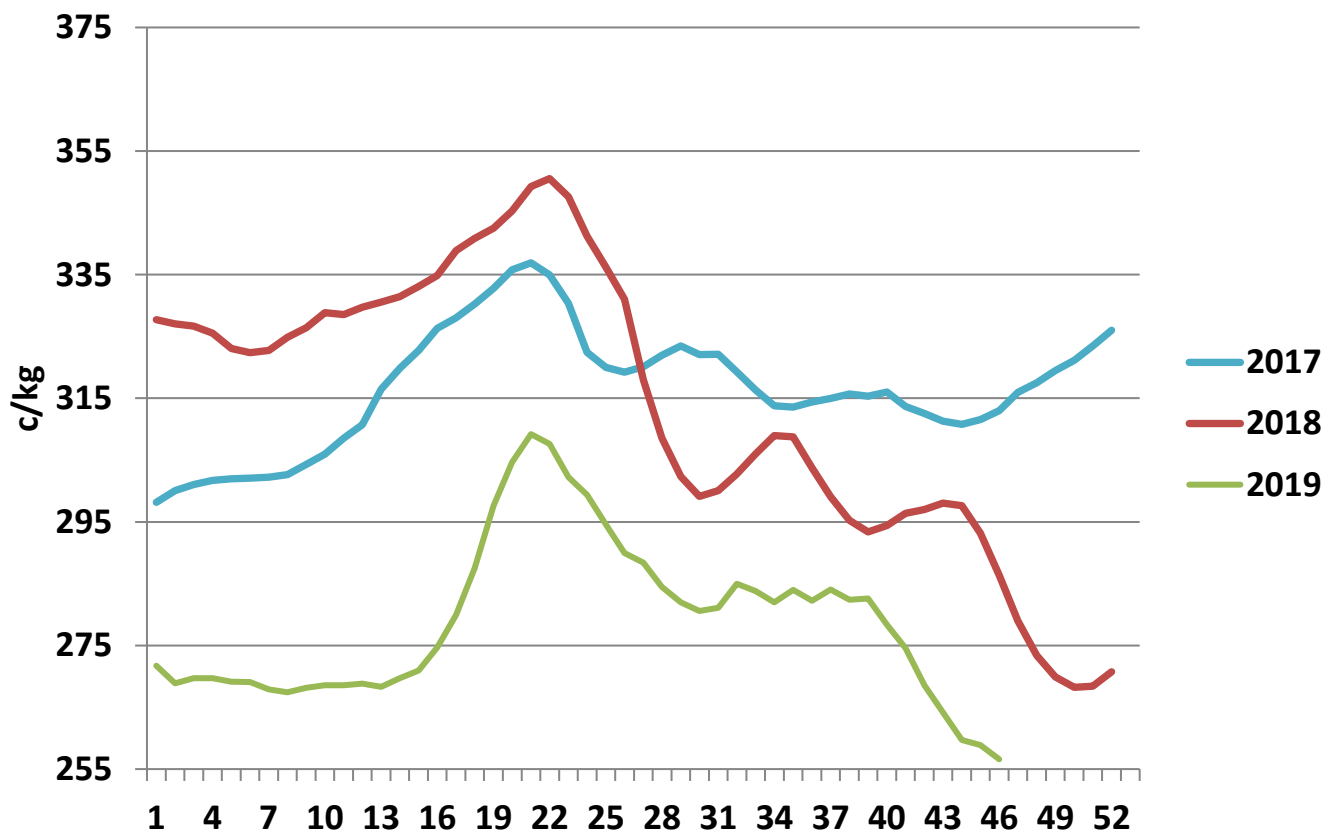
U3 Young Bull prices ex. VAT



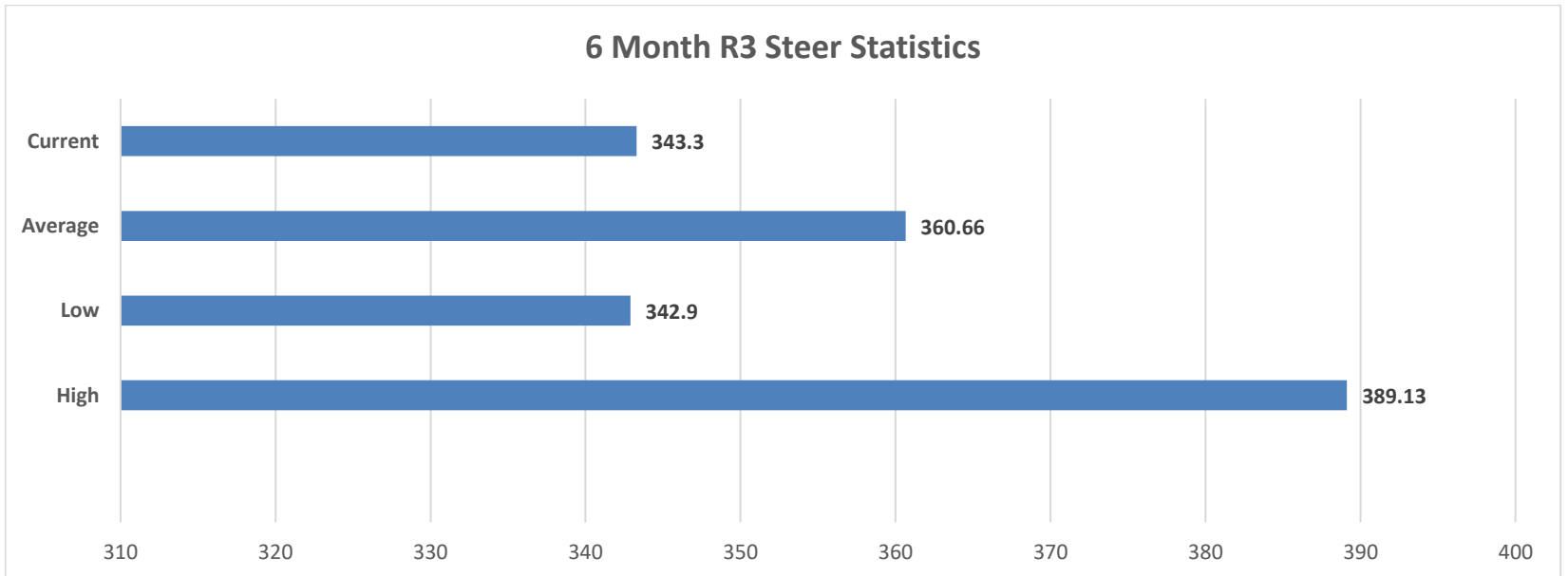
R3 Heifer prices ex. VAT



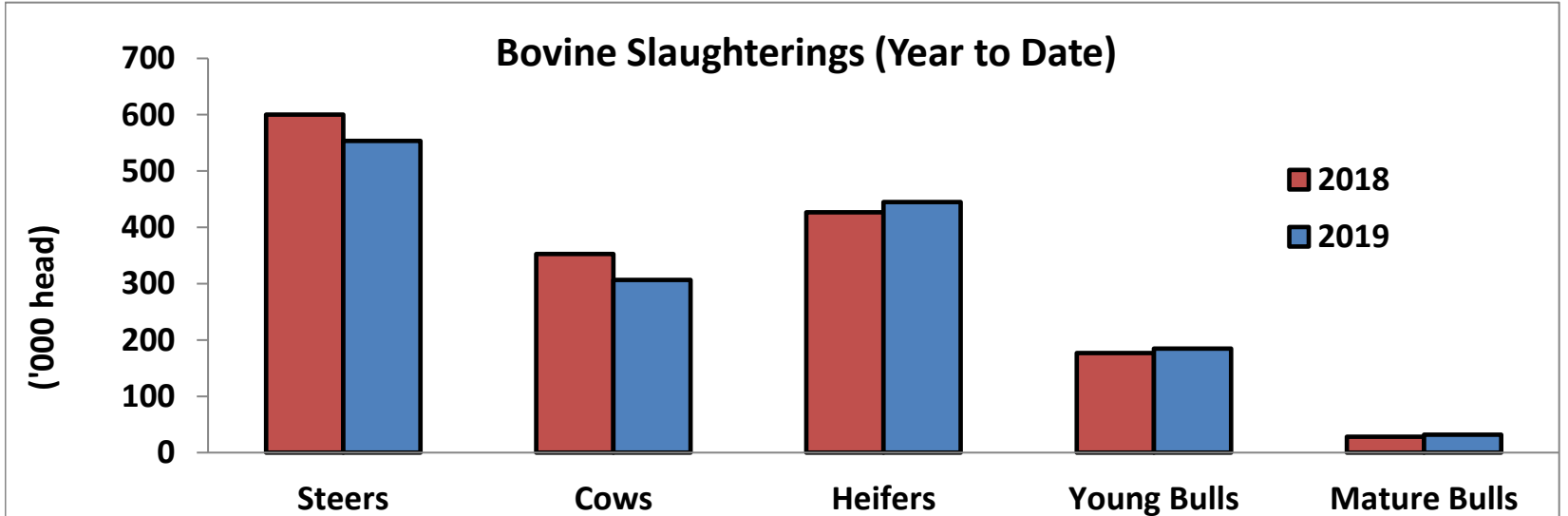
O4 Cow prices ex. VAT



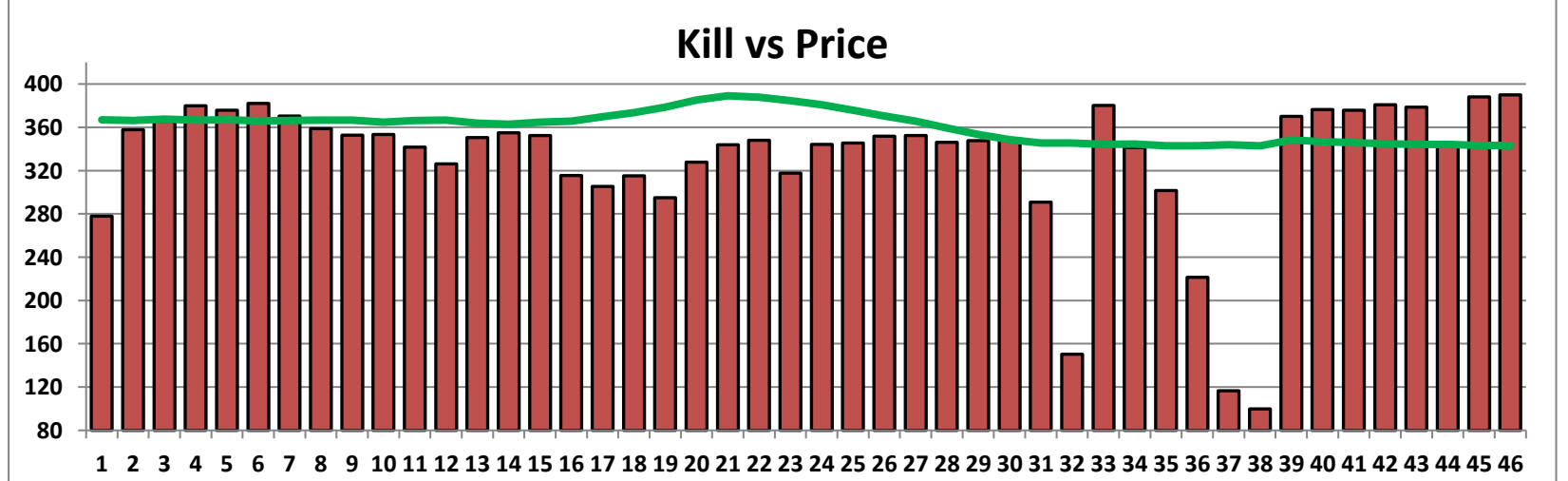
6 Month R3 Steer Statistics



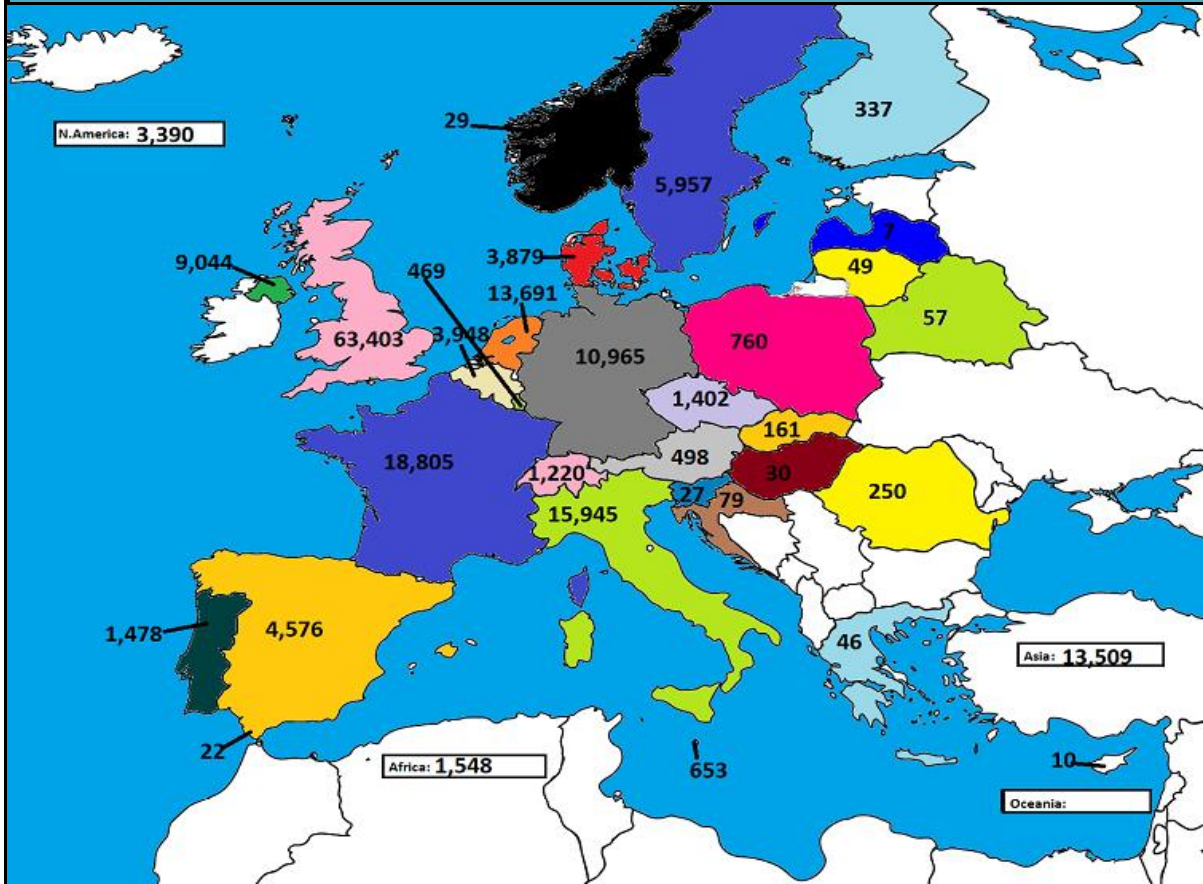
Bovine Slaughtering (Year to Date)



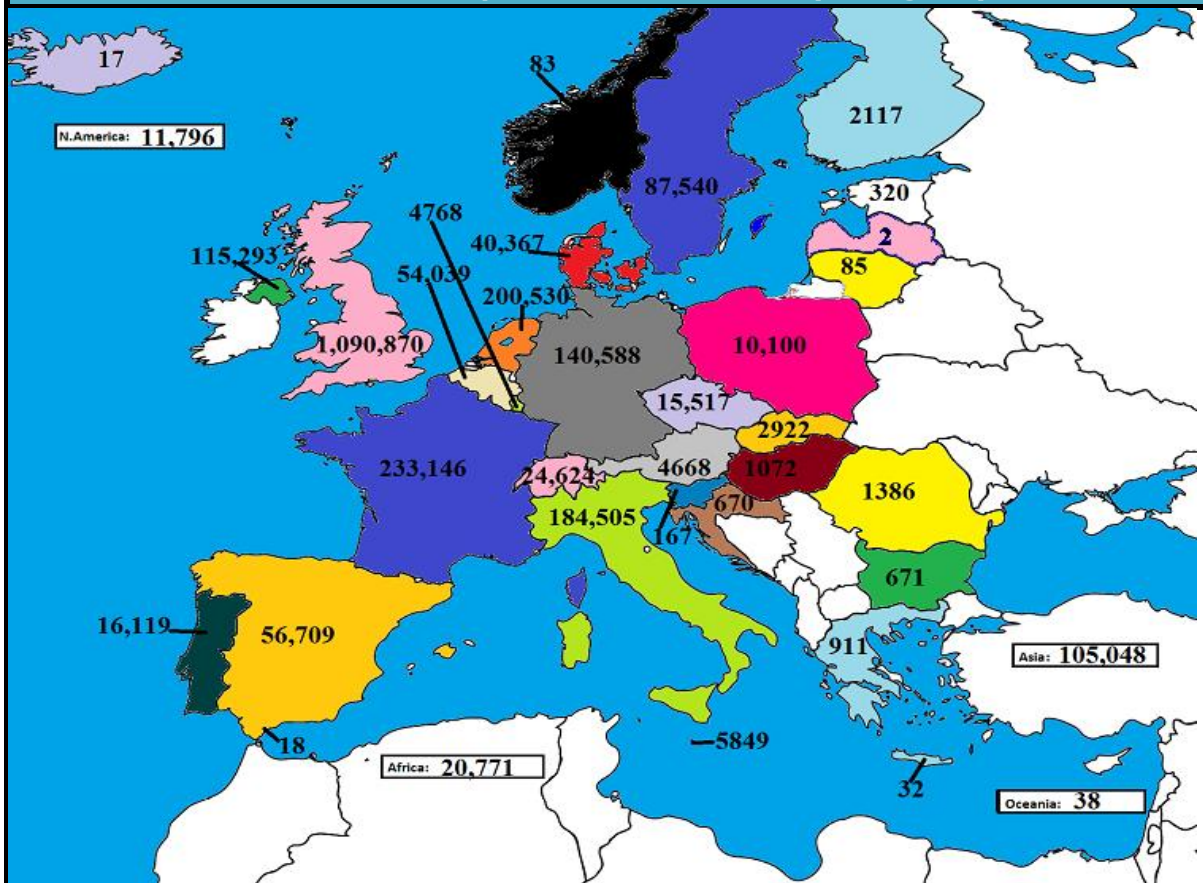
Kill vs Price



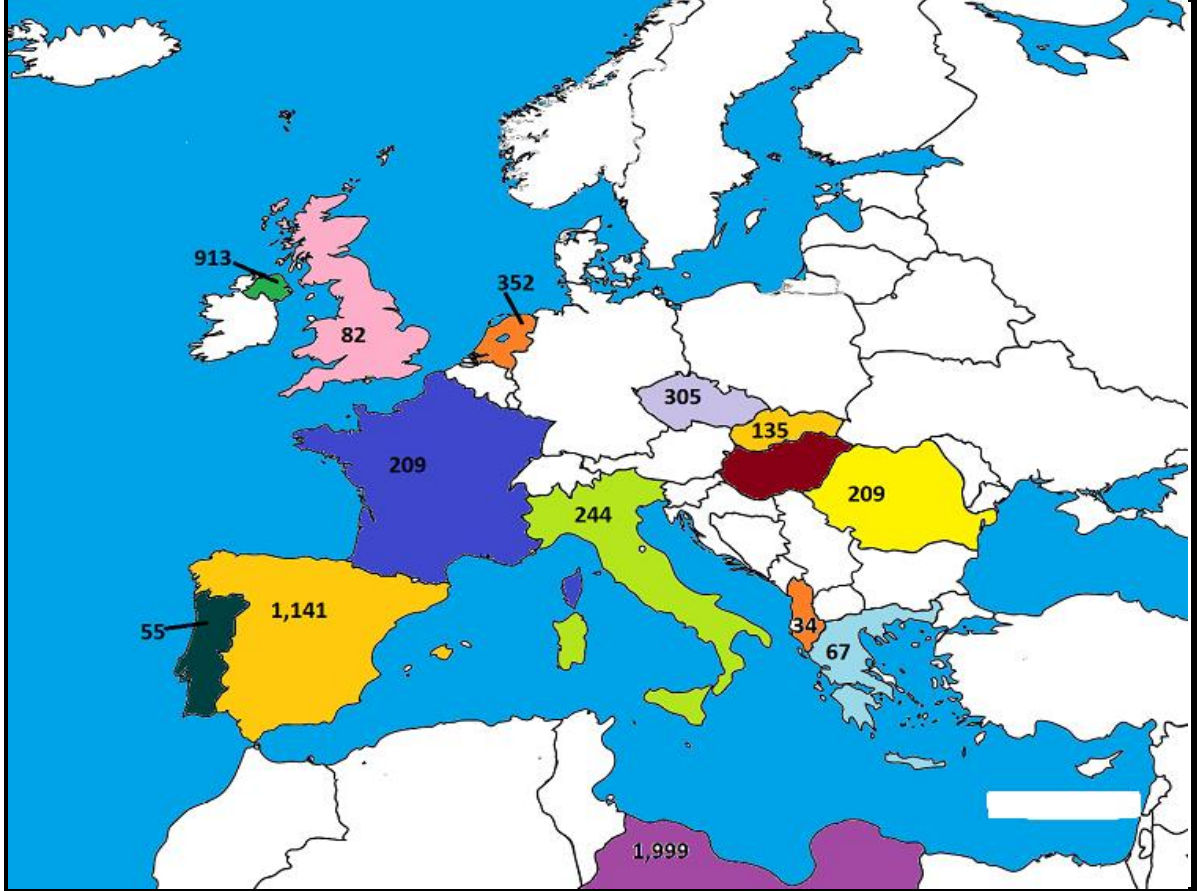
August 2019 Beef exports, €000 (CSO figures)



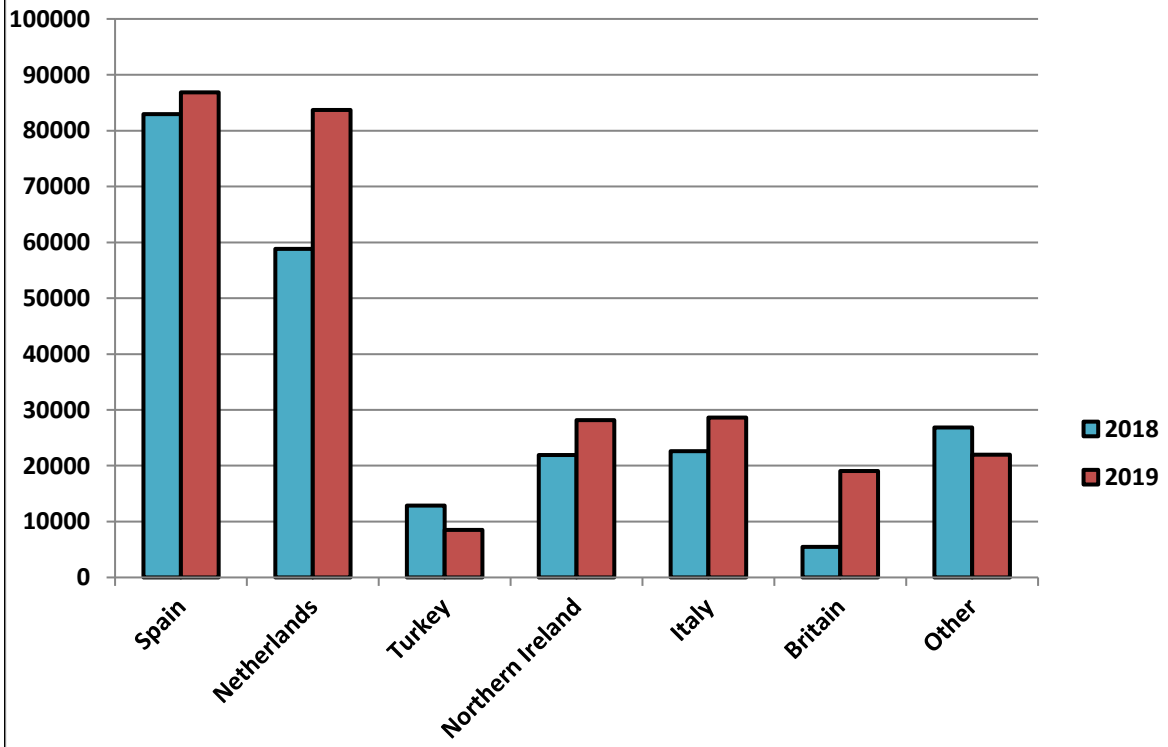
Cumulative beef exports to Dec 2018, €000 (CSO figures)



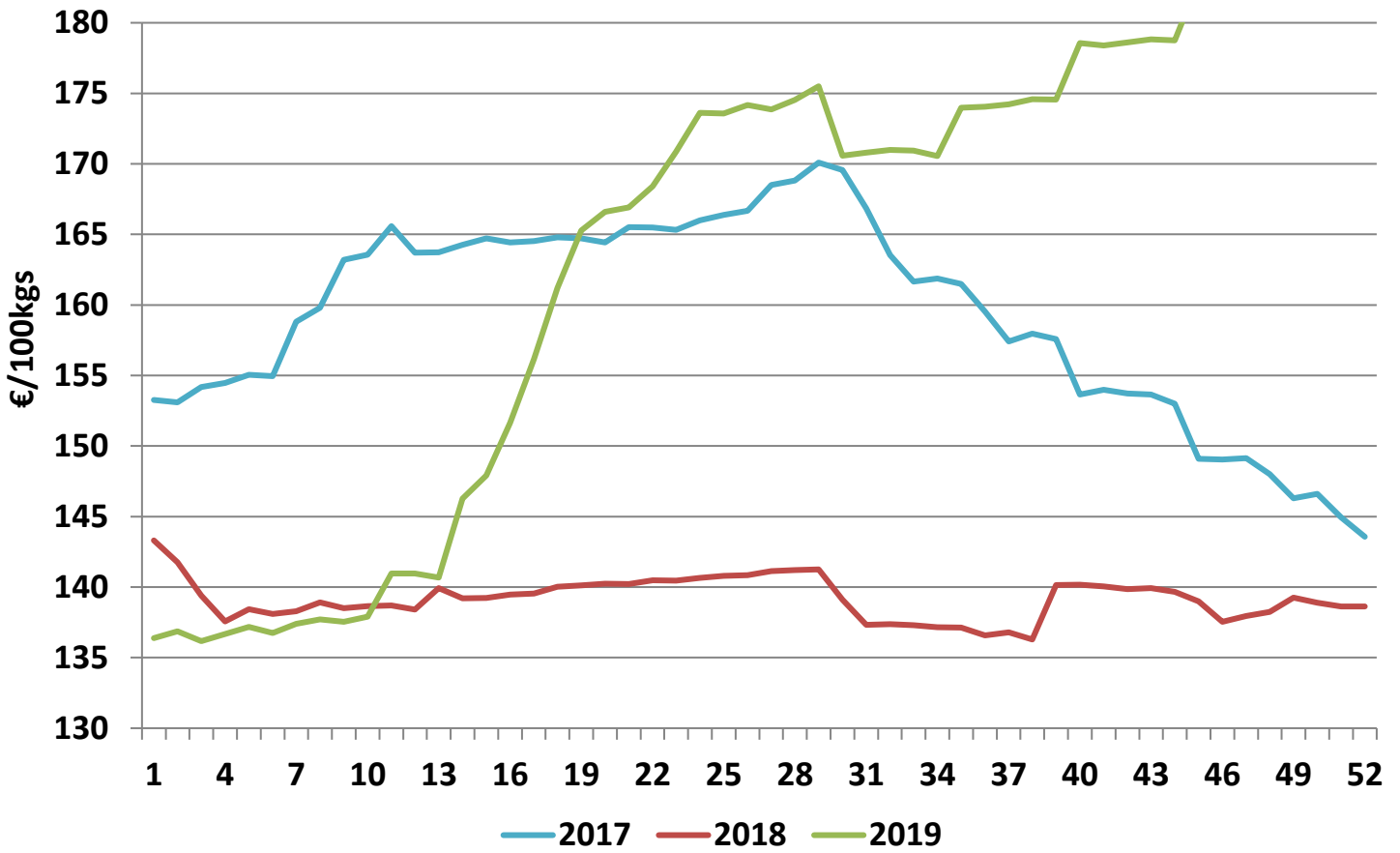
Cattle exported, w/c 04/11/19



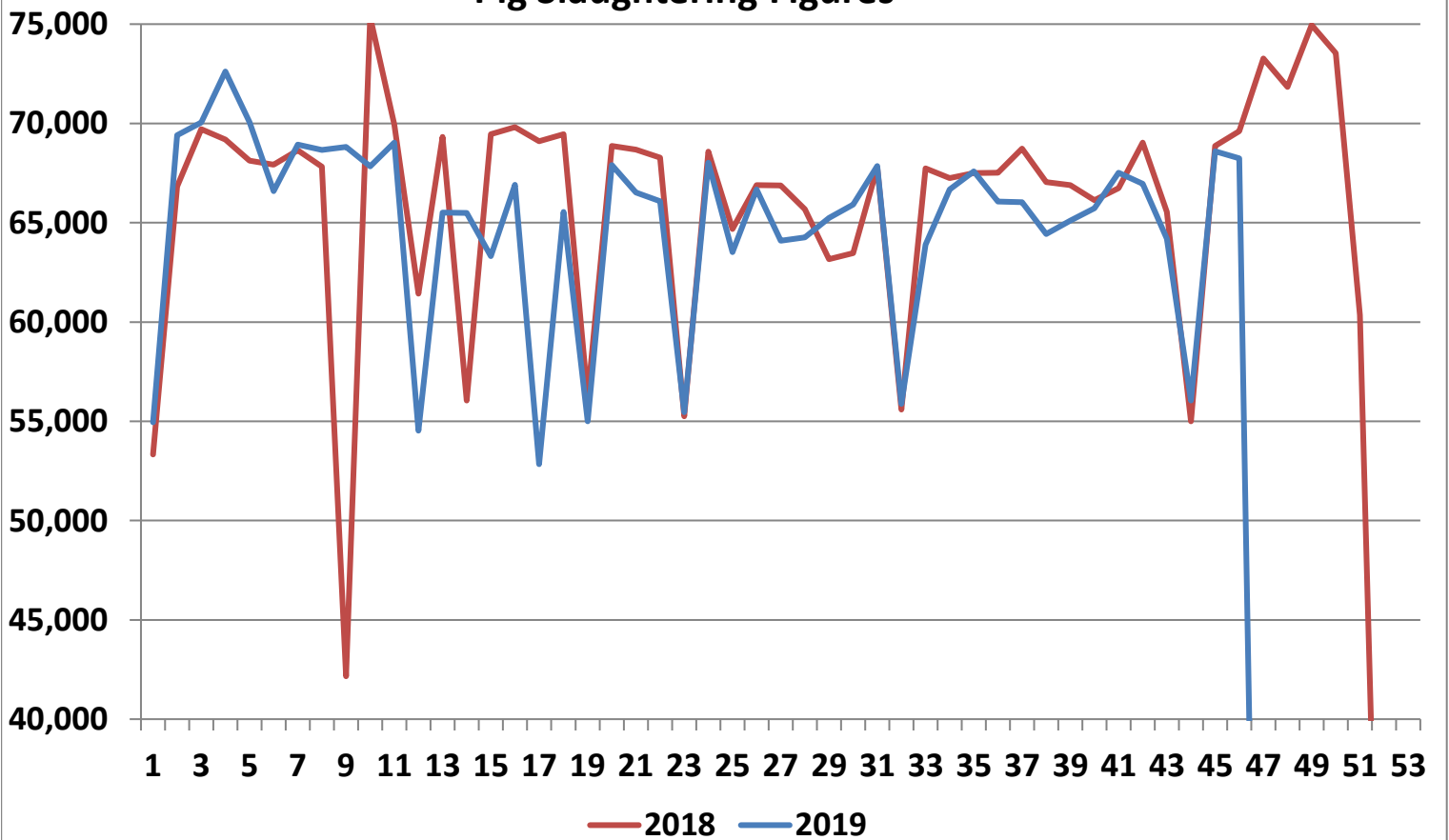
Cumulative cattle export figures, 2019



Average Grade E Pig Price



Pig Slaughtering Figures



Sheepmeat Information for Week 45

NOTE: EU PRICES ARE PROVISIONAL AT THE TIME OF PUBLICATION AND MAY NOT BE REFLECTIVE OF THE CURRENT PERIOD

Irish Prices €/100 kg	2019	2018	Change
Ave Factory Price	442.04	448.90	-1.5%
Ave Mart Price	375.68	385.55	-2.6%
National Ave Price	422.13	429.89	-1.8%
YTD Ave	461.44	486.52	-5.2%

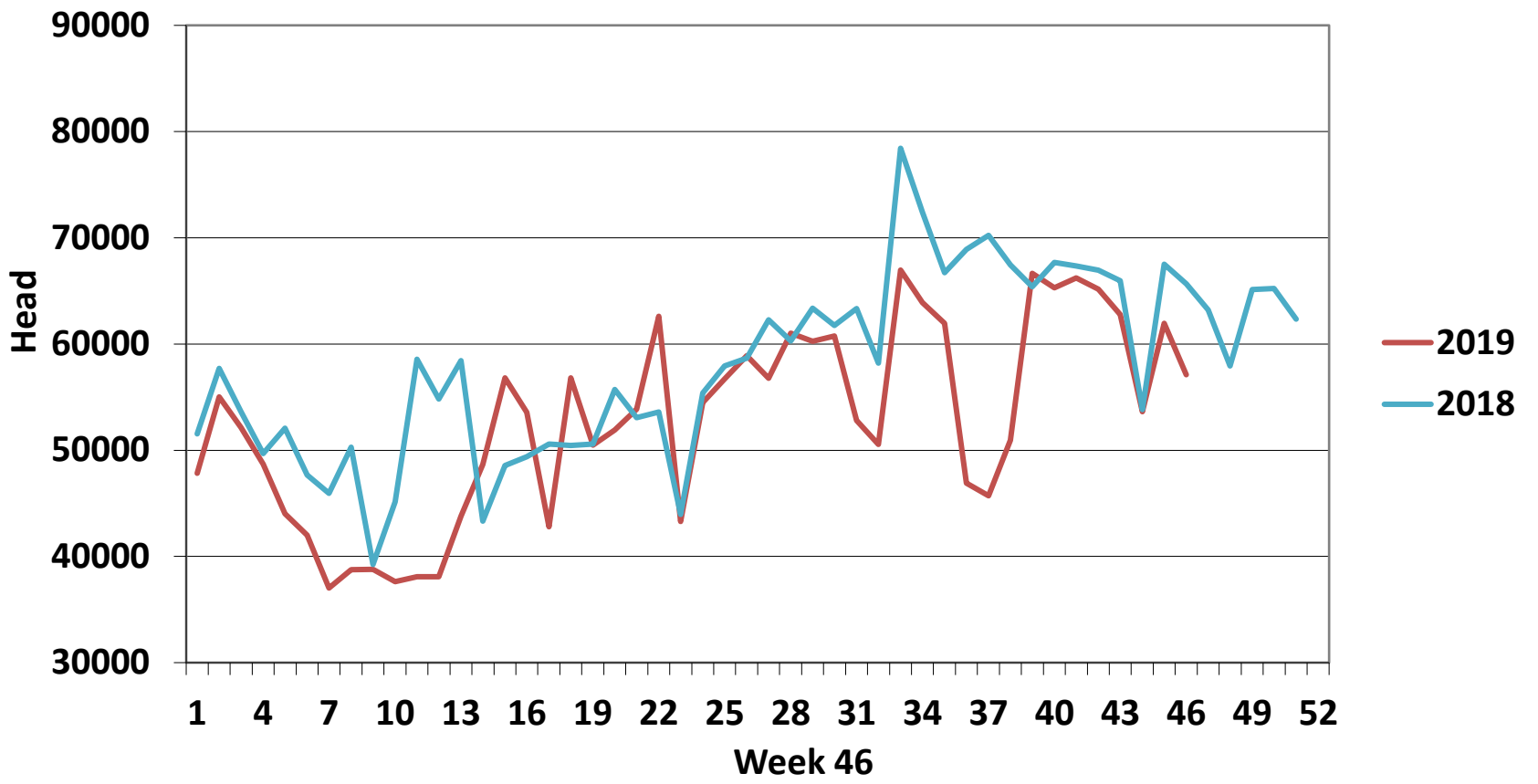
EU Market Rates Heavy Lambs	€/100kg
Belgium	460.7
Denmark	512.7
Germany	532.2
Spain	576.3
France	637.0
Croatia	492.8
Ireland	422.1
Italy	583.0
Cyprus	607.0
Latvia	304.0
Lithuania	316.1
Netherlands	477.2
Austria	553.0
Poland	435.9
Romania	198.7
Finland	401.0
Sweden	394.6
Northern Ireland	423.0
Great Britain	474.8
United Kingdom	471.1
Community	498.9

Slaughterings	2019	2018	Change
Weekly	57,118	65,662	-13%
YTD	2,430,108	2,649,570	-8%

**REPORT ON SLAUGHTERING AT SHEEP EXPORT PREMISES
WEEK 46**

CATEGORY	2019		2018		DIFFERENCE	
	Weekly	Cumulative	Weekly	Cumulative	Weekly	Cumulative
Lambs/Hoggets	57	738,676	79	829,475	-22	90,799
Spring Lambs	48,099	1,329,871	53,901	1,369,646	-5,802	39,775
Ewes and Rams	8,962	360,990	11,661	450,278	-2,699	89,288
Light Lambs		571	21	171	-21	400
TOTAL	57,118	2,430,108	65,662	2,649,570	-8,544	-219,462

Weekly Sheep Slaughterings



Ave. Price €/100 kg for Sheepmeat

