

# Meat Market Report

25/11/19 - 01/12/19

Week

48



**An Roinn Talmhaíochta,  
Bia agus Mara**

Department of Agriculture,  
Food and the Marine

# MARKET SUMMARY

## Beef

### Deadweight Prices c/100Kg (Including VAT)

	U3	U4	R3	R4	O3	O4	P+3
Steers	369.0	364.0	360.0	356.0	340.0	338.0	313.0
Heifers	381.0	378.0	369.0	367.0	354.0	351.0	312.0
Young Bulls	351.0	352.0	338.0	337.0	322.0	320.0	306.0
Cows			295.0	295.0	272.0	272.0	256.0

### Liveweight Prices

*Bull Calf Average Price	€126.4 per head (Excluding VAT)
**Young Store Average Price	€199.0 per 100kg (Excluding VAT)
***Yearling (male & female) Price	€174.5 per 100kg (Excluding VAT)

\* Aged 8-28 days \*\* Aged 180-364 days, Male & Female \*\*\*age 365-730 days

### Slaughterings

40,128 cattle slaughtered this week, of which steers were 15,662 (39%), heifers 11,534 (29%), young bulls 4,276 (11%) and cows 8,090 (20%). Total YTD slaughter is 1,600,856 compared to 1,664,730 in 2018, a 4% decrease.

### Live Trade

2,406 cattle were exported in the week commencing 25/11/2019, 1,457 to EU (Except NI). Live exports for 2019 amount to 286,968 compared to 238,514 in 2018, up 20% on 2018 levels.

\*This data is provisional and subject to revision.

The next meeting of the Management Committee for the Common Organisation of Agricultural Markets (Animal Products Sector) is 12th December 2019

### CONTENTS:

Page 2: Market Summary Beef  
 Page 3: Market Summary Other Meats  
 Page 4: Beef Price and Slaughter Summary  
 Page 5: Comparative Beef Prices  
 Page 6: Steer and Young Bull Price  
 Page 7: Heifer and Cow Graphs  
 Page 8: Price and Slaughter Graphs  
 Page 9: Liveweight Beef Graphs

Page 10: Beef Export Maps  
 Page 11: Beef Export Info  
 Page 12: Pig price and slaughter graphs  
 Page 13: Sheep prices and slaughter  
 Page 15: Sheep price and slaughter graphs

# MARKET SUMMARY

## Pigmeat

Grade E Pig  
Prices (Ex.  
VAT)

The Grade E Pig price for week commencing 25/11/2019 was €189.04 per 100Kg compared to €138.24 in the same week last year, which represents a 37% increase.

Slaughtering

70,228 pigs were slaughtered in week 48 of which 1,540 were sows. The cumulative figure for pig slaughterings in 2019 is 3,133,095 which is a 1% decrease with the same point last year.

## Sheepmeat

Sheepmeat  
Prices (Ex.  
VAT)

The national average price for the week commencing 25/11/2019 was €447.19 per 100Kg, an increase of 1.2% over the same week last year.

Slaughtering

64,682 sheep were slaughtered at sheep export premises the week commencing 25/11/2019, compared to 57,948 in the same week of 2018. Sheep slaughterings for 2019 are 8% down on 2018 at 2,557,310 head.

Live Trade

Total live exports to European Countries stood at 6,227 head to the end of August 2019.

## Poultry

Slaughtering

Cumulative poultry slaughterings for 2019\* stand at 96,135,809 birds at the end of week 47, up 8% compared to the same period last year.

\*Latest Figures are provisional and subject to change

Dead Weight Prices	W/C	W/C	Same week 2018	% change prev week	% change 2018
	25/11/19	18/11/19	26/11/18		
Steers (R3) (c/kg)	341.6	341.7	365.3	0.0%	-6.5%
Heifers (R3) (c/kg)	350.6	350.4	377.7	0.0%	-7.2%
Young Bulls (U3) (c/kg)	333.0	331.5	371.6	0.5%	-10.4%
Cows (04) (c/kg)	257.8	257.6	273.4	0.1%	-5.7%

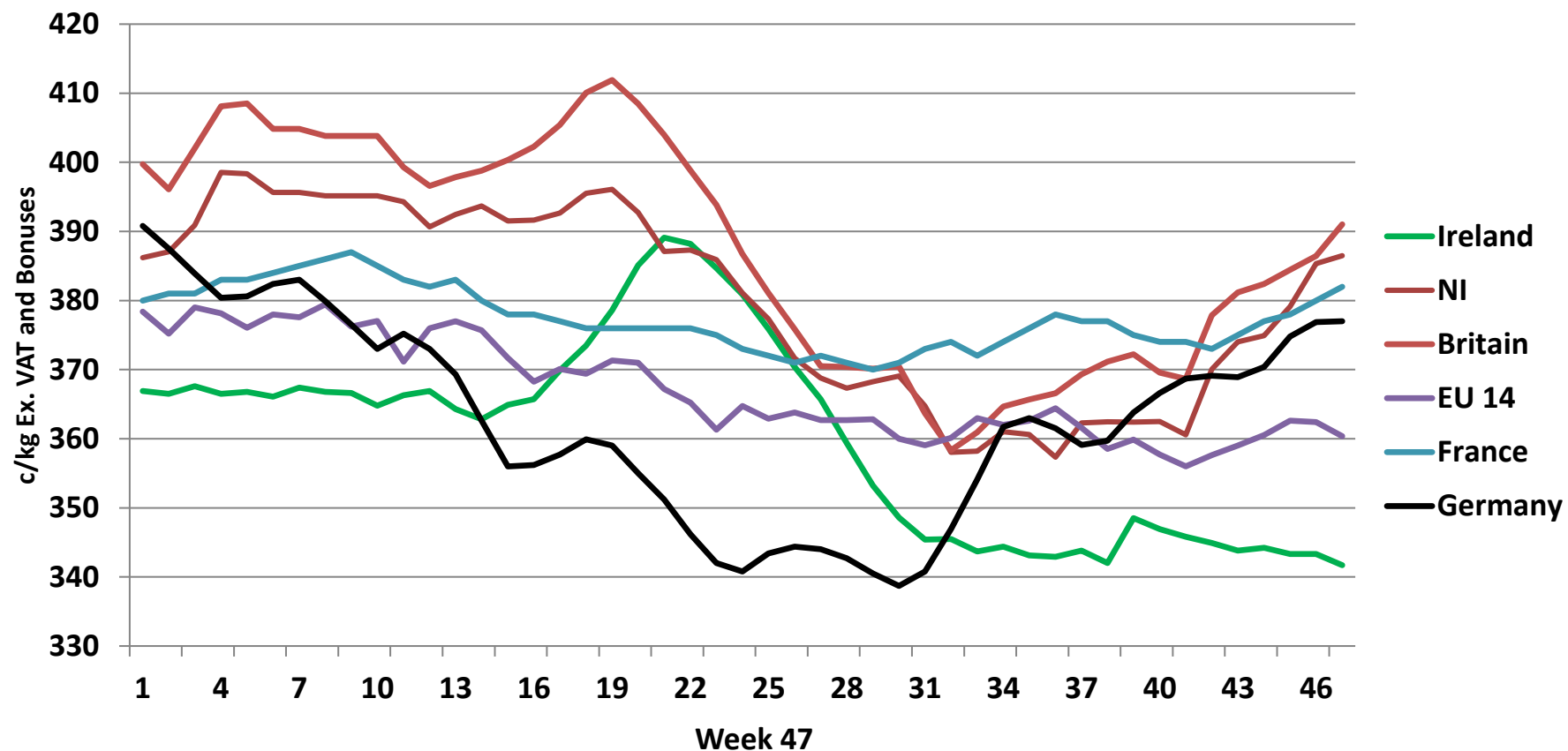
Live Weight Prices	W/C	W/C	Same week 2018	% change previous week	% change 2018
	25/11/19	18/11/19	26/11/18		
Yearlings (Male) (Aged 365 - 730 days) - (€/100Kg)	172	167	176	3.0%	-2.3%
Yearlings (Female) (Aged 365 - 730 days) - (€/100Kg)	177	175	179	1.1%	-1.1%
Young Stores (Male & Female) (Aged 180 - 364 days) - (€/100Kg)	199	196	205	1.5%	-2.9%
Bull Calf (€/head) Dairy	91.8	89.0	108.4	3.1%	-15.4%
Bull Calf (€/head) Beef	161.0	187.6	188.0	-14.2%	-14.3%

Slaughter Figures	% of weekly figures	W/C	Same week 2018	Year to Date		Change 2019 v 2018	
		25-Nov-19		2019	2018	Head	%
Steers	39.0%	15,662	12,481	584,528	629,643	-45,115	-7.2%
Cows	20.2%	8,090	8,714	322,928	370,562	-47,634	-12.9%
Heifers	28.7%	11,534	11,292	467,676	449,266	18,410	4.1%
Young Bulls	10.7%	4,276	4,323	192,954	186,180	6,774	3.6%
Mature Bulls	1.4%	566	495	32,770	29,079	3,691	12.7%
<b>Total</b>	<b>100%</b>	<b>40,128</b>	<b>37,305</b>	<b>1,600,856</b>	<b>1,664,730</b>	<b>-63,874</b>	<b>-3.8%</b>

821

Live Exports	W/C	Same week	W/C	Year to Date		Change 2019 v 2018	
	25-Nov-19	2018	11-Nov-19	2019	2018	Head	%
Northern Ireland	919	628	711	30,832	22,455	8,377	37%
EU Except NI	1,457	1,803	1,625	236,498	197,155	39,343	20%
Third Countries	30	0	481	19,638	18,904	734	-
<b>Total</b>	<b>2,406</b>	<b>2,431</b>	<b>2,817</b>	<b>286,968</b>	<b>238,514</b>	<b>48,454</b>	<b>20%</b>
<b>Calves YTD:</b>	<b>198,592</b>			<b>Adult YTD:Cattle</b>		<b>88,236</b>	

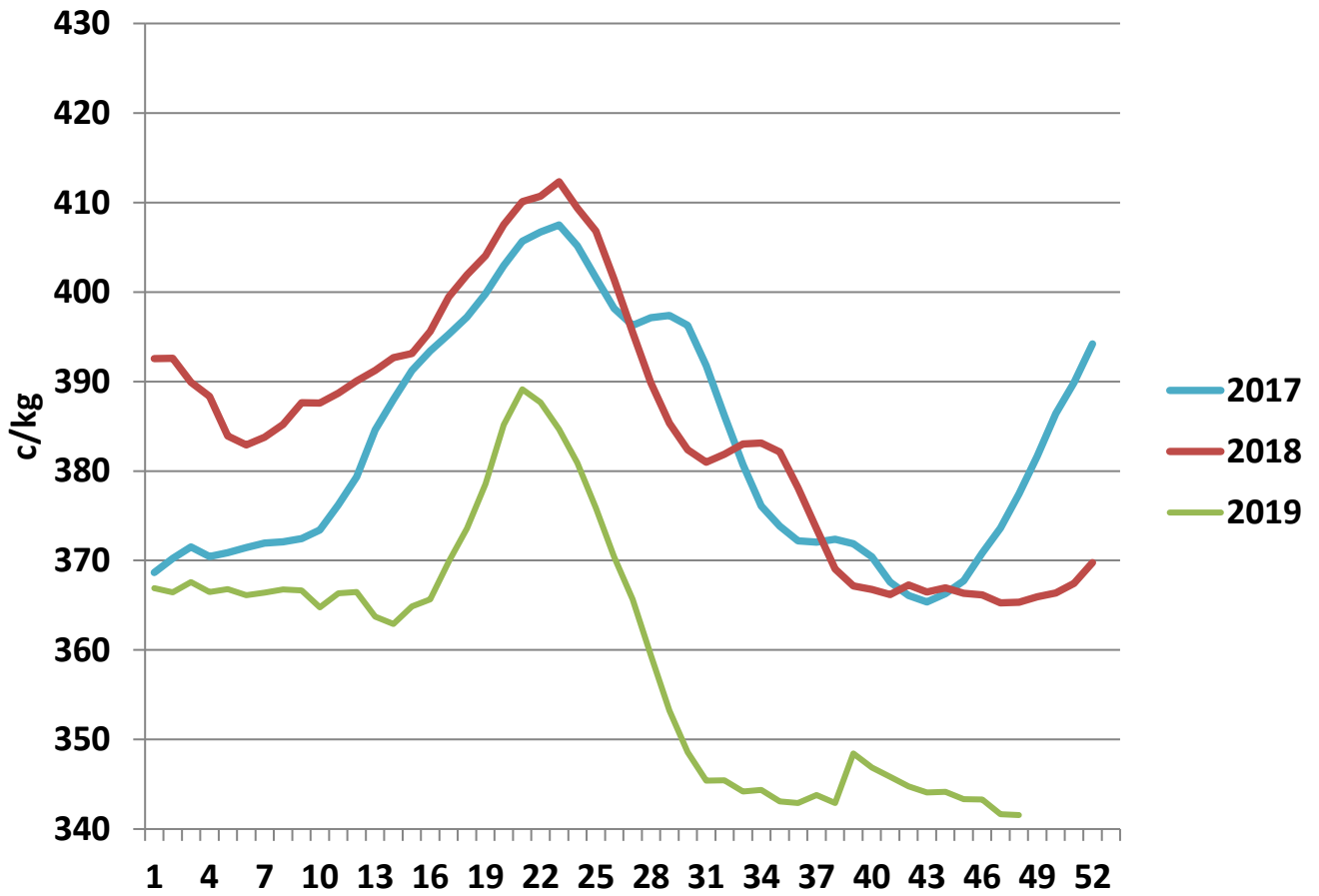
## Irish Deadweight Cattle Prices vs Selected Other Markets, 2019



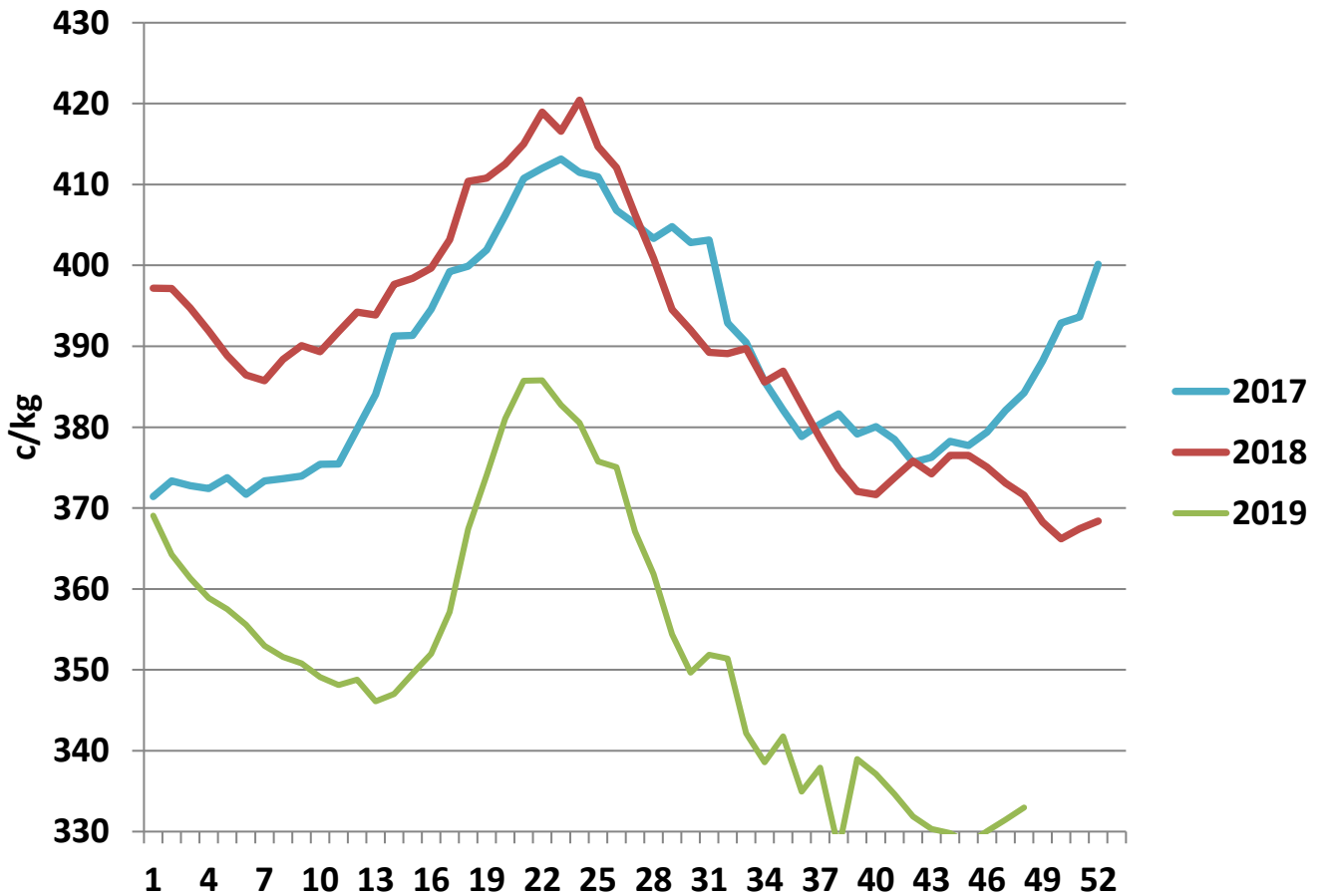
### Livestock Pricing

	Ireland	NI	Britain	EU 14 Average	France	Germany
<b>18/11/2019</b>	<b>342</b>	<b>386</b>	<b>391</b>	<b>360</b>	<b>382</b>	<b>377</b>

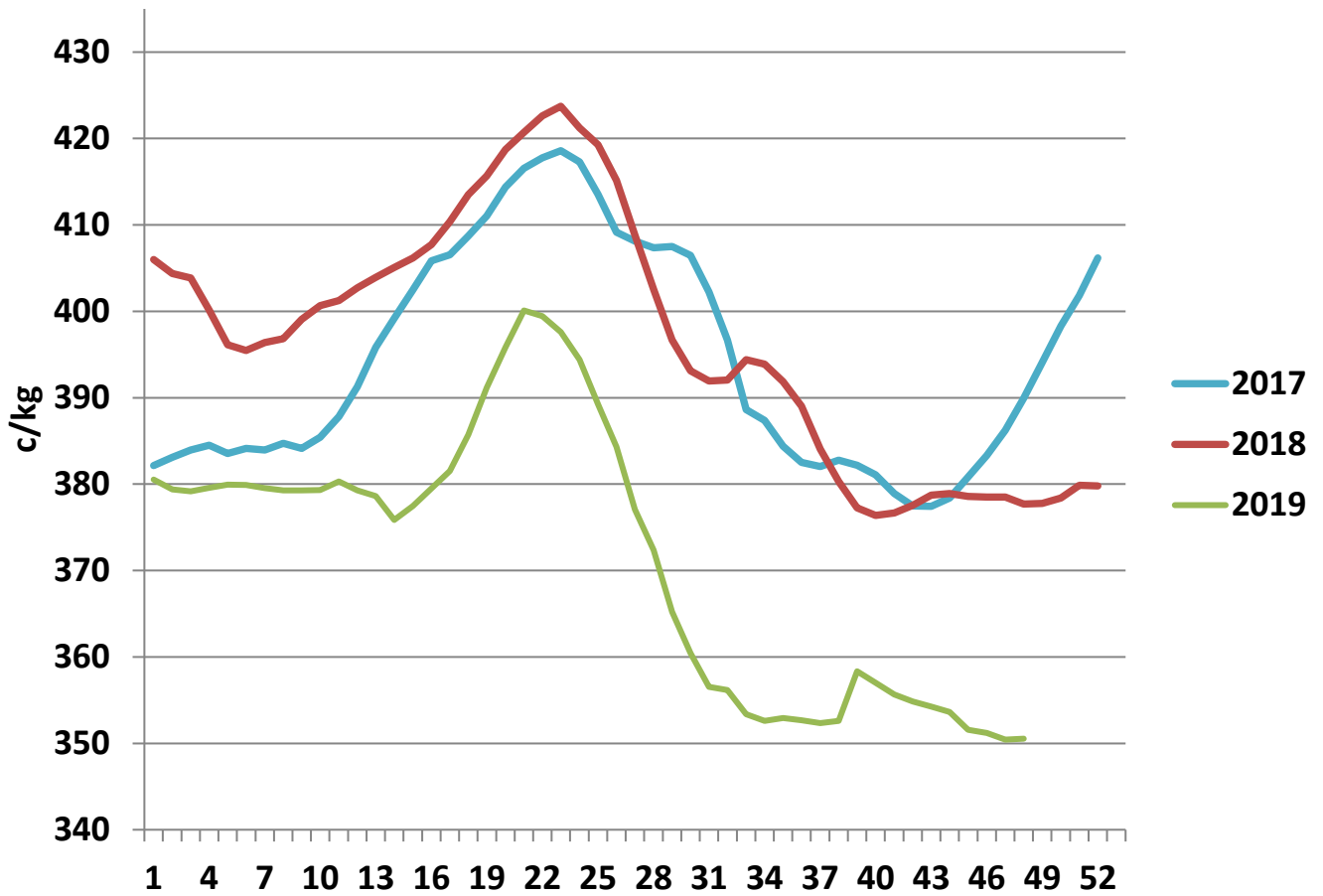
### R3 Steer prices ex. VAT



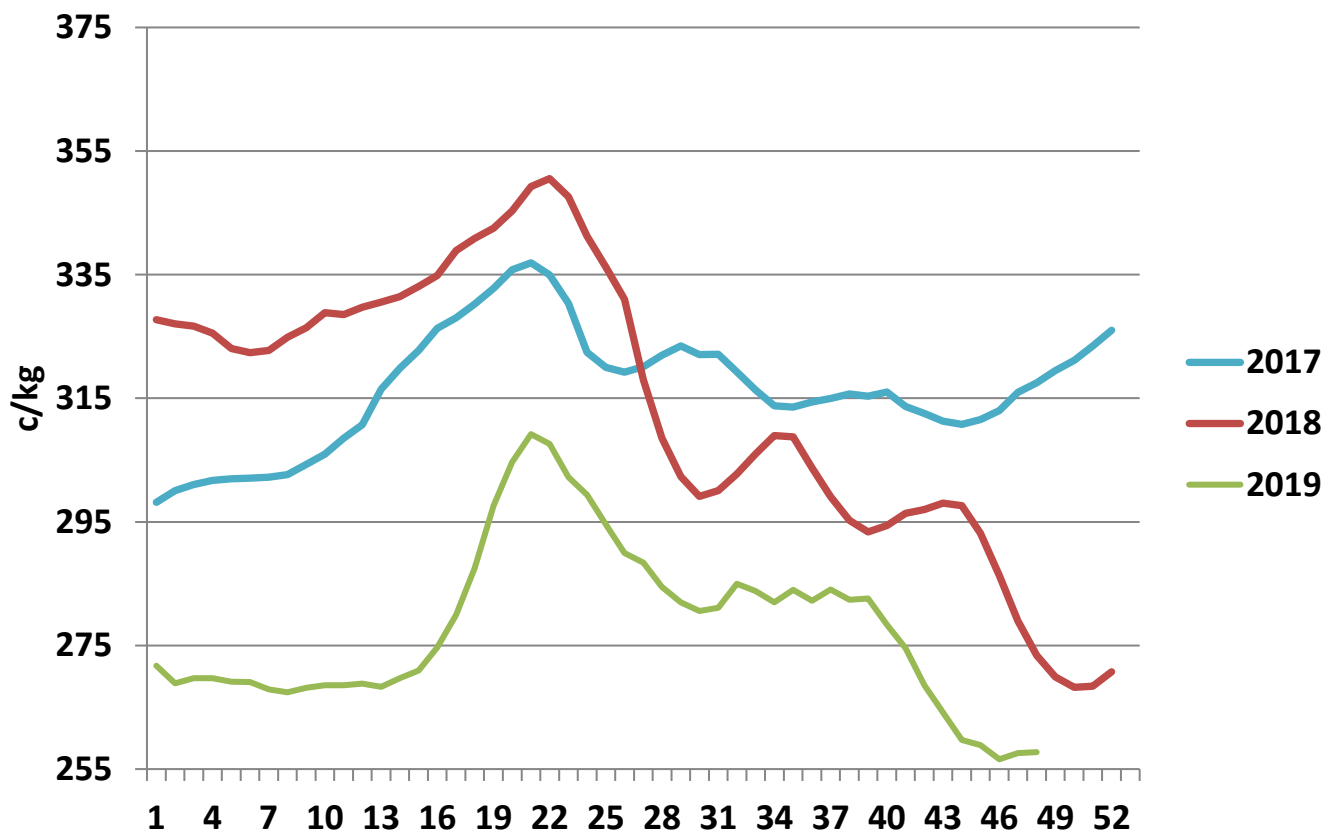
### U3 Young Bull prices ex. VAT



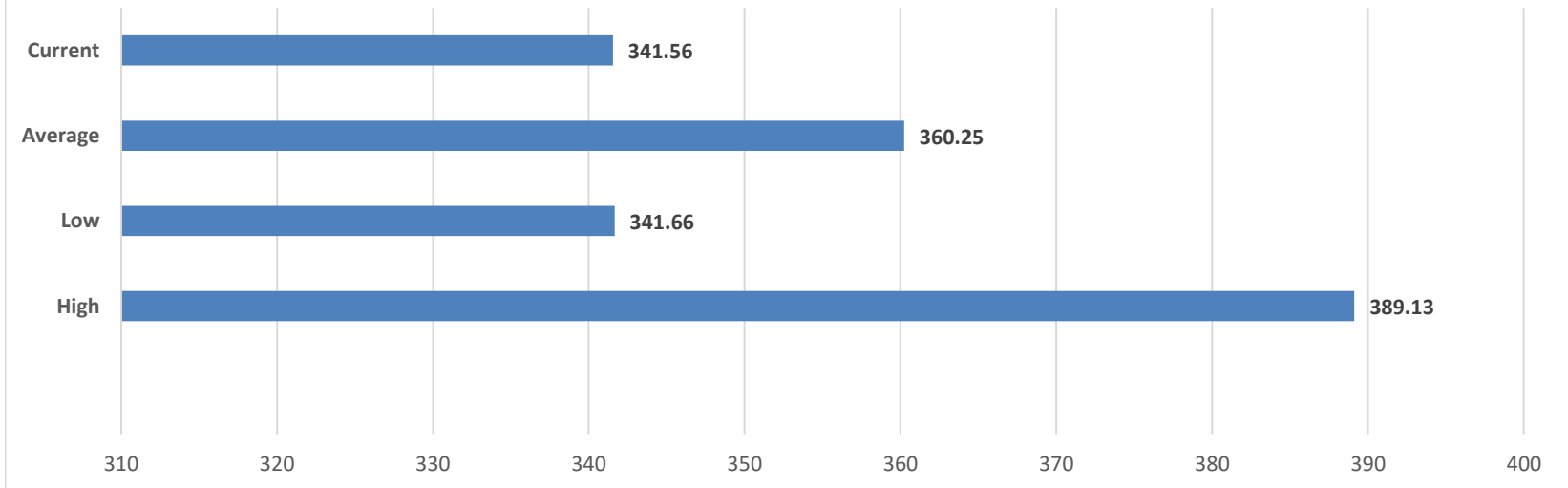
### R3 Heifer prices ex. VAT



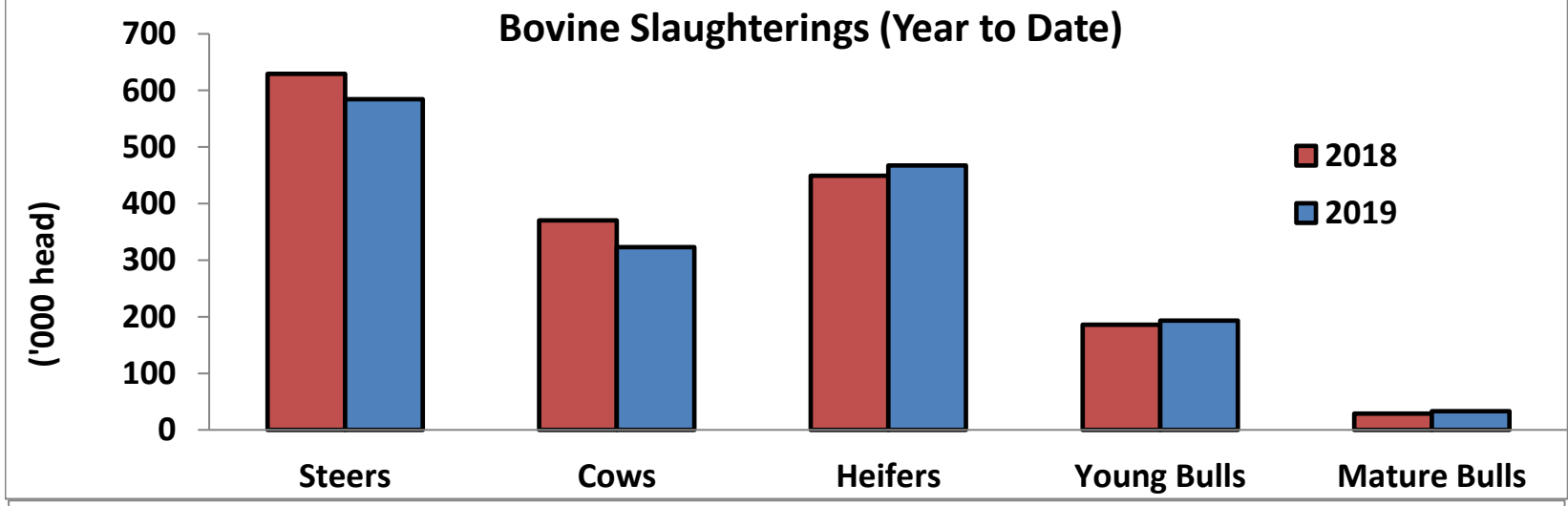
### O4 Cow prices ex. VAT



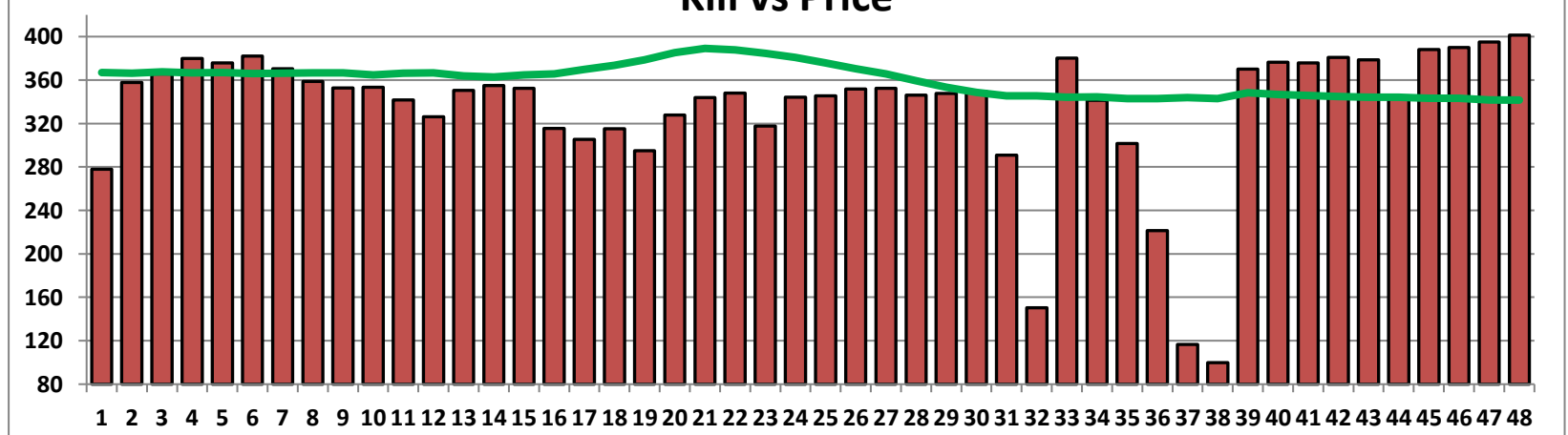
### 6 Month R3 Steer Statistics



### Bovine Slaughtering (Year to Date)

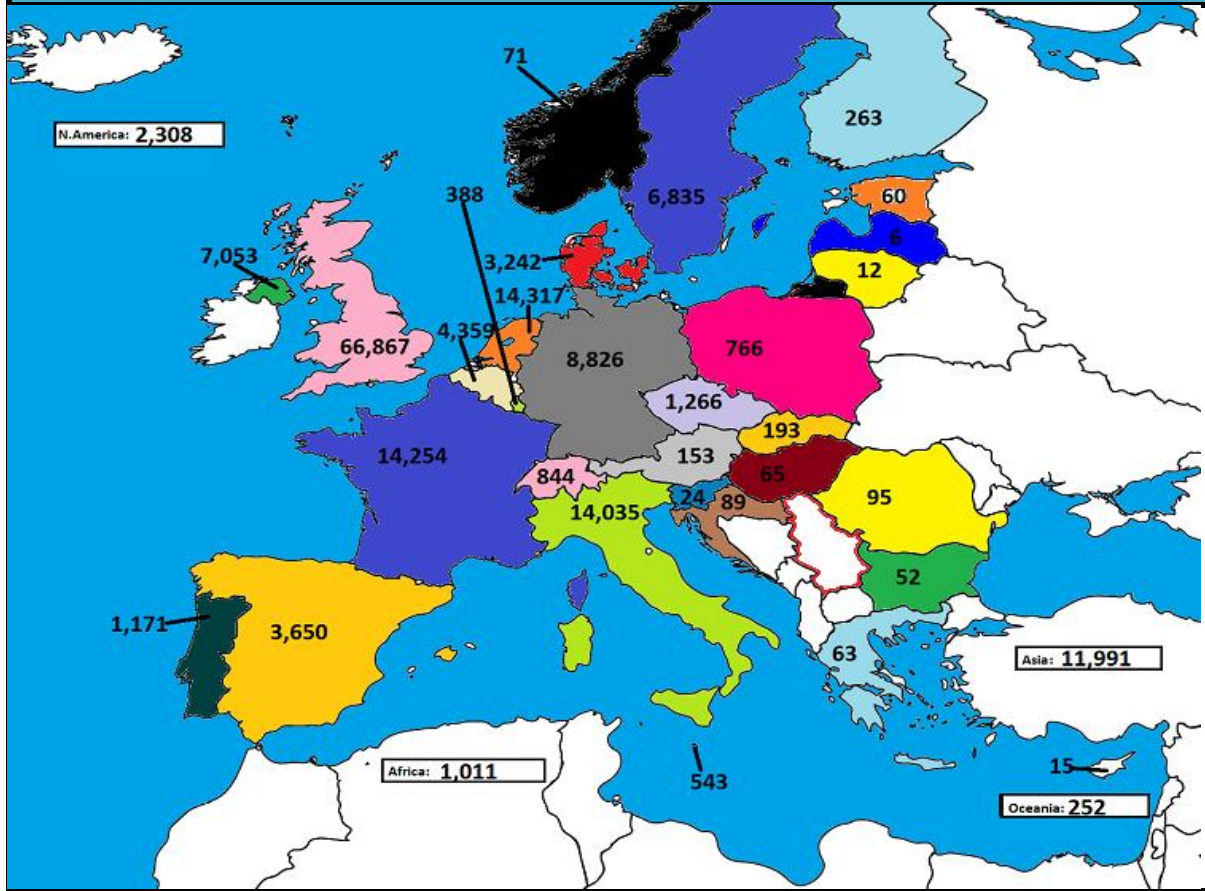


### Kill vs Price

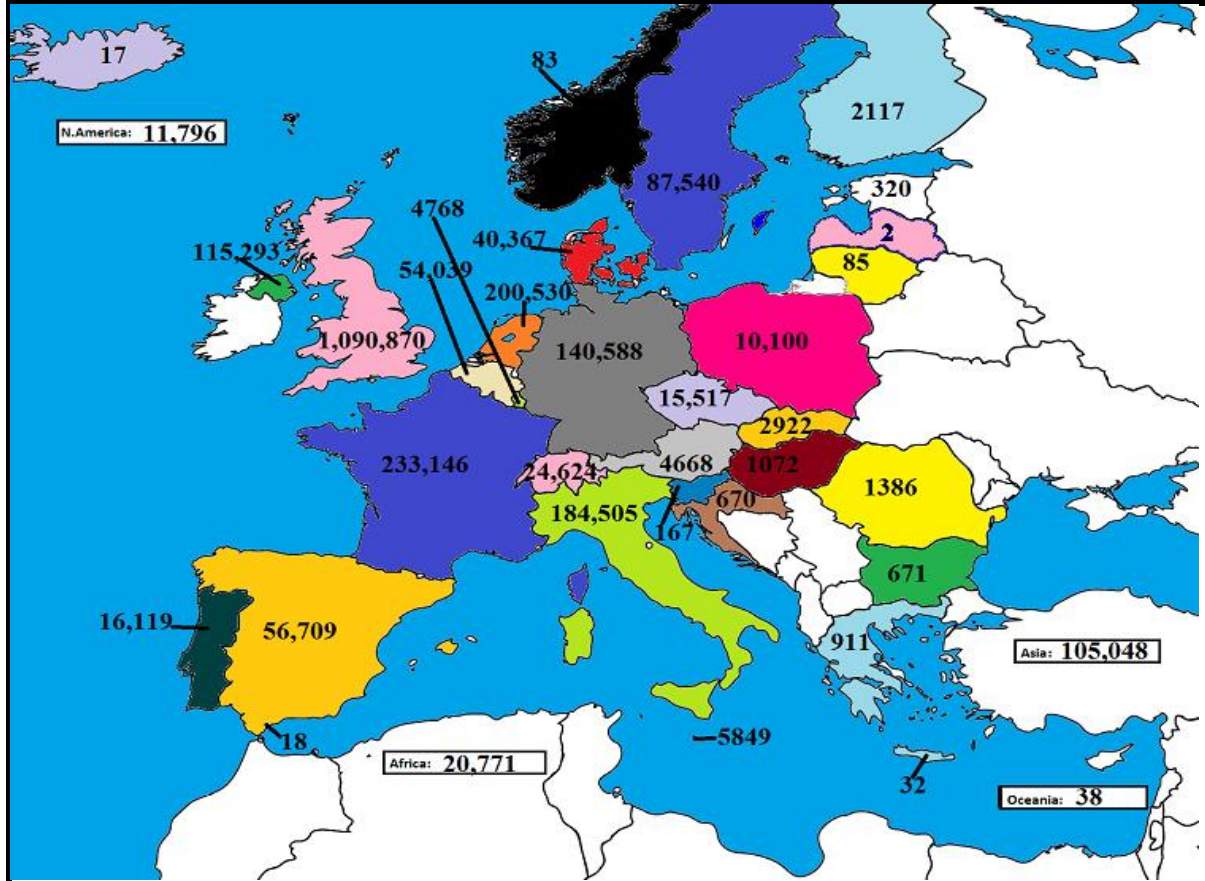




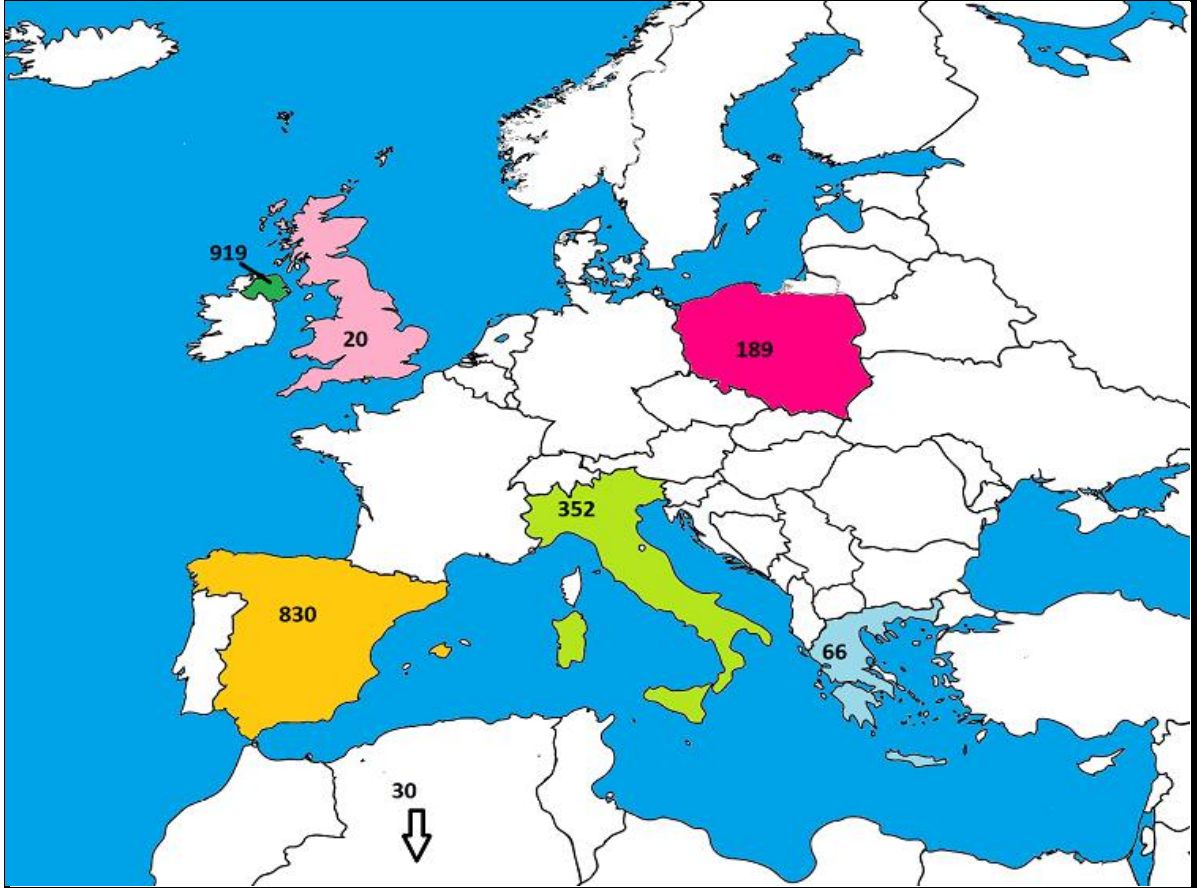
September 2019 Beef exports, €000 (CSO figures)



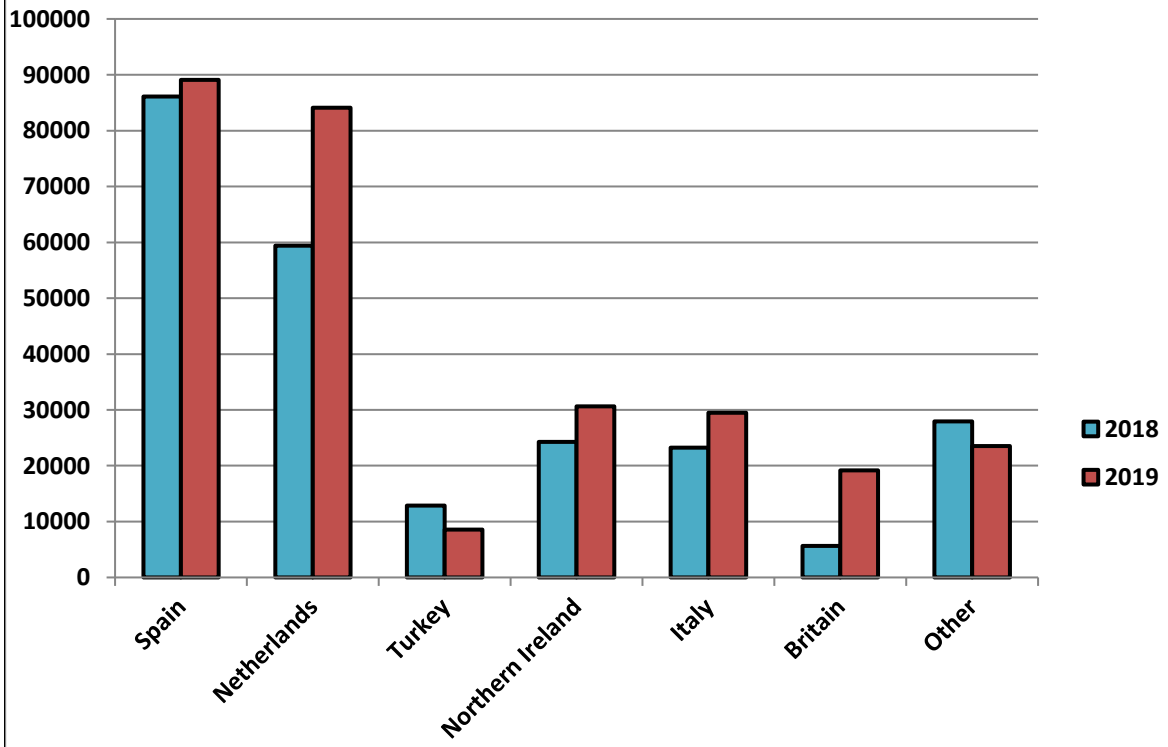
Cumulative beef exports to Dec 2018, €000 (CSO figures)



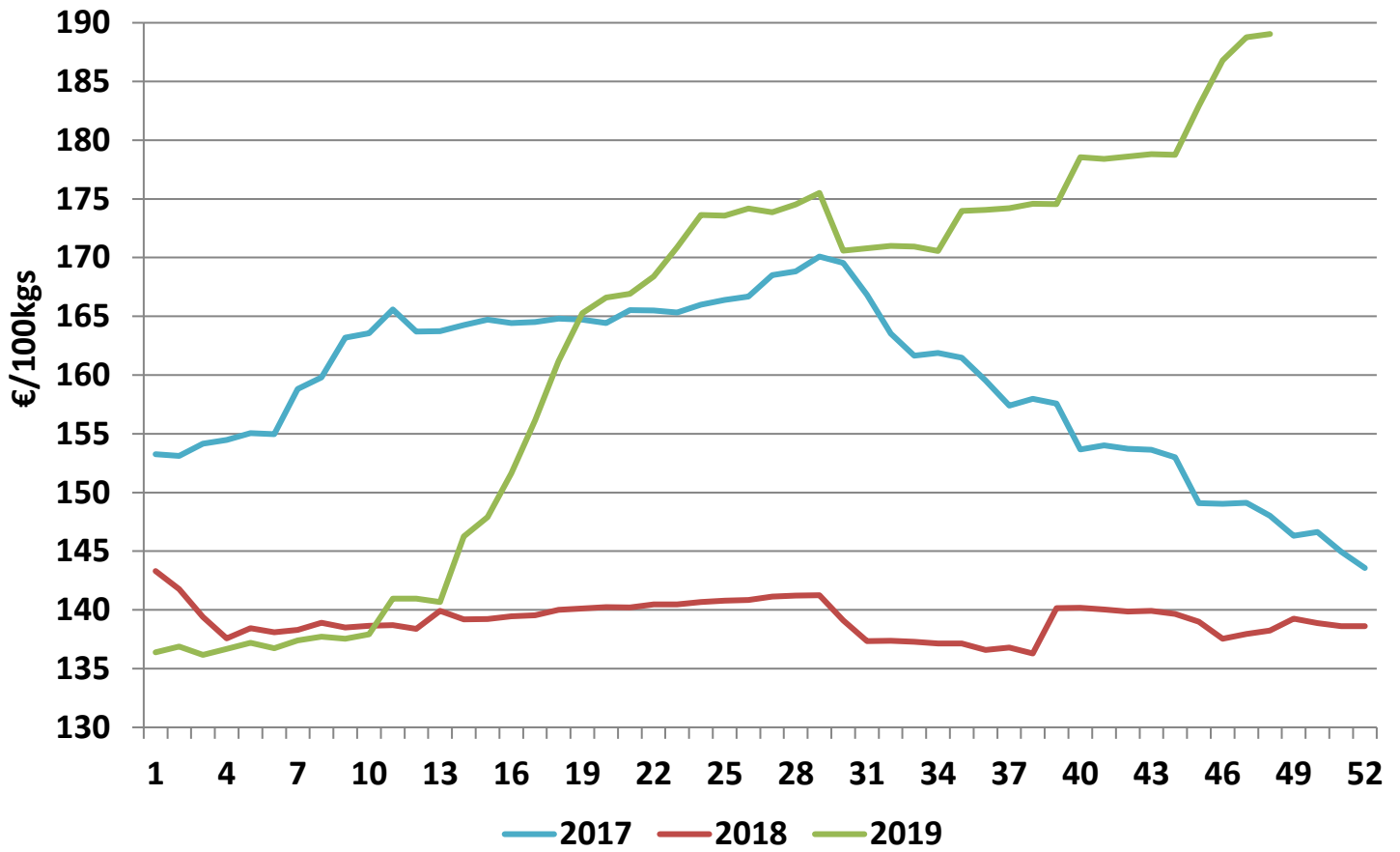
Cattle exported, w/c 25/11/19



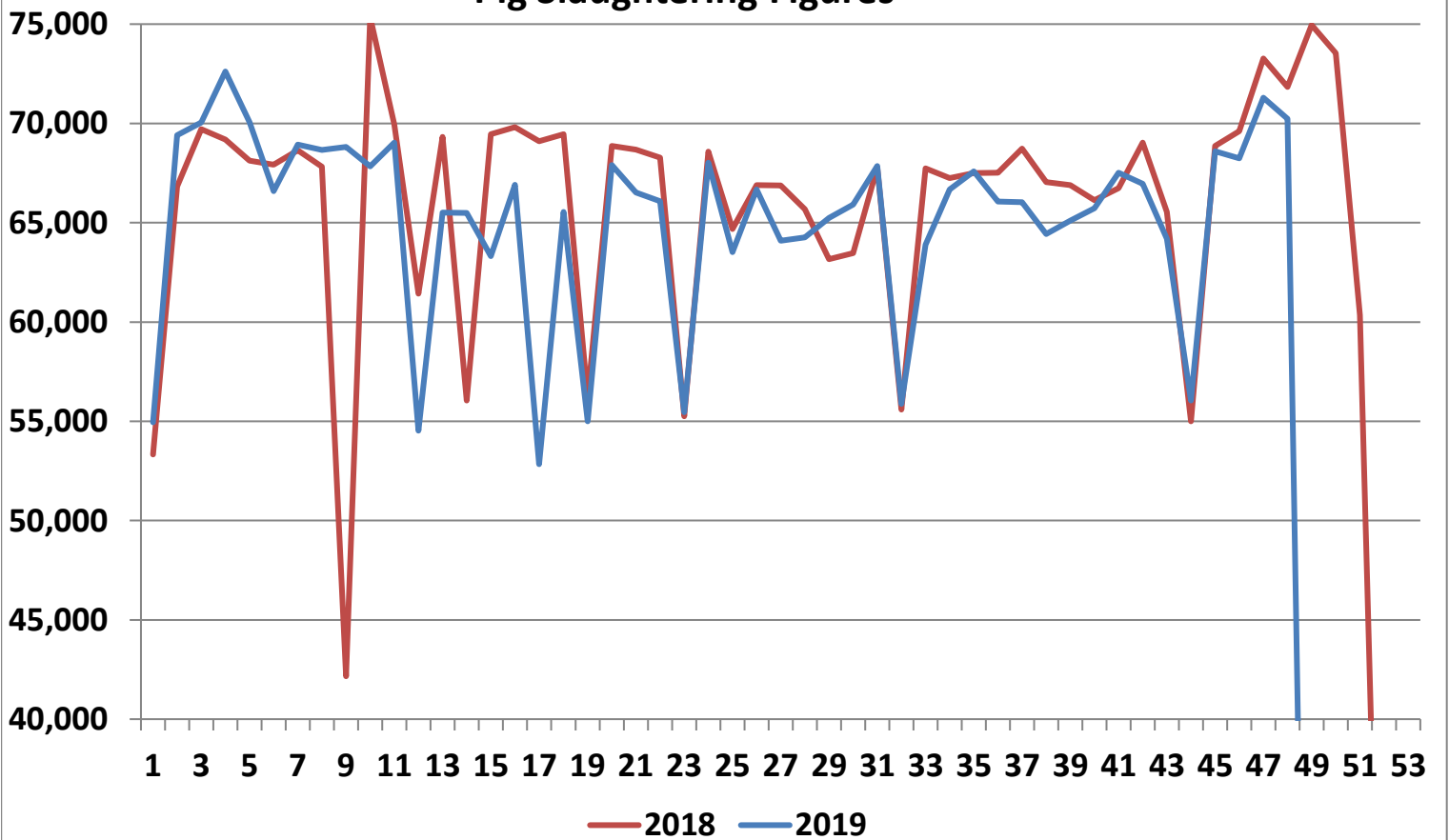
Cumulative cattle export figures, 2019



### Average Grade E Pig Price



### Pig Slaughtering Figures



**Sheepmeat Information for Week 48**

NOTE: EU PRICES  
ARE PROVISIONAL AT  
THE TIME OF  
PUBLICATION AND  
MAY NOT BE  
REFLECTIVE OF THE  
CURRENT PERIOD

Irish Prices €/100 kg	2019	2018	Change
Ave Factory Price	464.37	459.35	1.1%
Ave Mart Price	407.10	400.86	1.6%
National Ave Price	447.19	441.81	1.2%
YTD Ave	460.58	484.49	-4.9%

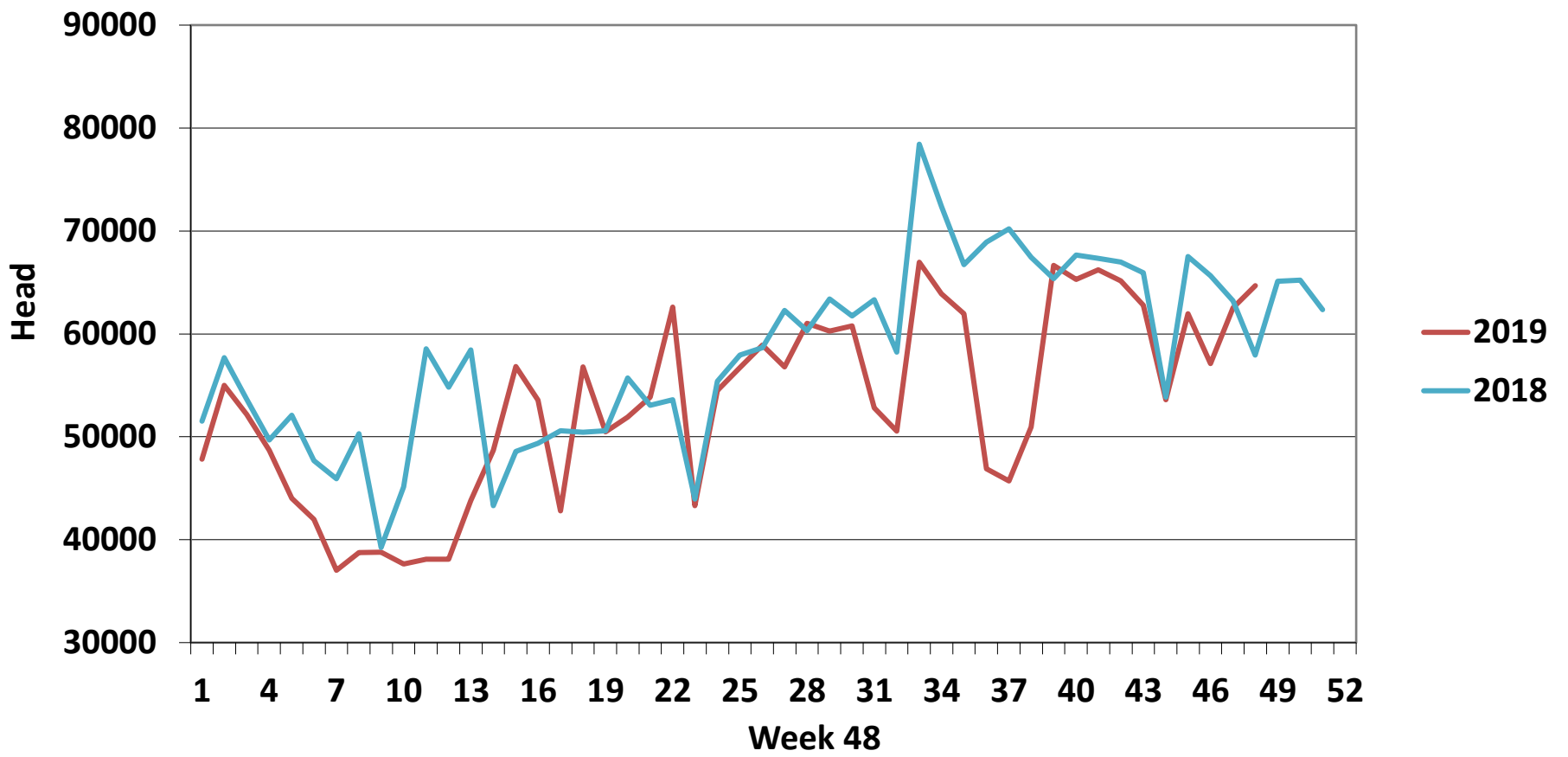
EU Market Rates Heavy Lambs	€/100kg
Belgium	460.7
Denmark	512.7
Germany	532.2
Spain	576.3
France	637.0
Croatia	492.8
Ireland	447.2
Italy	583.0
Cyprus	607.0
Latvia	304.0
Lithuania	316.1
Netherlands	477.2
Austria	553.0
Poland	435.9
Romania	198.7
Finland	401.0
Sweden	394.6
Northern Ireland	423.0
Great Britain	474.8
United Kingdom	471.1
Community	498.9

Slaughterings	2019	2018	Change
Weekly	64,682	57,948	12%
YTD	2,557,310	2,770,723	-8%

**REPORT ON SLAUGHTERING AT SHEEP EXPORT PREMISES  
WEEK 47**

CATEGORY	2019		2018		DIFFERENCE	
	Weekly	Cumulative	Weekly	Cumulative	Weekly	Cumulative
Lambs/Hoggets	90	738,842	93	829,638	-3	-90,796
Spring Lambs	55,600	1,438,856	47,294	1,468,771	8,306	-29,915
Ewes and Rams	8,992	379,041	10,560	472,138	-1,568	-93,097
Light Lambs		571	1	176	-1	395
<b>TOTAL</b>	<b>64,682</b>	<b>2,557,310</b>	<b>57,948</b>	<b>2,770,723</b>	<b>6,734</b>	<b>-213,413</b>

### Weekly Sheep Slaughtering



### Ave. Price €/100 kg for Sheepmeat

