

Meat Market Report

11/02/19 - 17/02/19

Week

07



**An Roinn Talmhaíochta,
Bia agus Mara**

Department of Agriculture,
Food and the Marine

MARKET SUMMARY

Beef

Deadweight Prices c/100Kg (Including VAT)

	U3	U4	R3	R4	O3	O4	P+
Steers	395.5	393.0	386.2	386.2	367.9	371.6	344.7
Heifers	415.5	413.7	400.0	399.3	382.7	382.8	350.5
Young Bulls	372.1	369.8	361.2	359.3	342.3	343.5	327.1
Cows			307.1	308.6	281.5	282.4	268.8

Liveweight Prices

*Bull Calf Average Price	€139.8 per head (Excluding VAT)
**Young Store Average Price	€214.0 per 100kg (Excluding VAT)
***Yearling (male & female) Price	€193.0 per 100kg (Excluding VAT)

* Aged 8-28 days ** Aged 180-364 days, Male & Female ***age 365-730 days

Slaughtering

37,041 cattle slaughtered this week, of which steers were 11,752 (32%), heifers 10,760 (29%), young bulls 6,460 (17%) and cows 7,422 (20%). Total YTD slaughter is 250,998 compared to 234,231 in 2018, a 7% increase.

Live Trade

7,454 cattle were exported in the week commencing 11/02/2019 6,779 to EU (Except NI). Live exports for 2019 amount to 20,521 compared to 13,021 in 2018, up 58% on 2018 levels.

*This data is provisional and subject to revision.

The next meeting of the Management Committee for the Common Organisation of Agricultural Markets (Animal Products Sector) is 21 February 2019

CONTENTS:

Page 2: Market Summary Beef
 Page 3: Market Summary Other Meats
 Page 4: Beef Price and Slaughter Summary
 Page 5: Comparative Beef Prices
 Page 6: Steer and Young Bull Price
 Page 7: Heifer and Cow Graphs
 Page 8: Price and Slaughter Graphs
 Page 9: Liveweight Beef Graphs

Page 10: Beef Export Maps
 Page 11: Beef Export Info
 Page 12: Market Access Update
 Page 13: Pig Price Graph
 Page 14: Pig Slaughtering
 Page 15: Sheep Prices
 Page 16: Sheep Slaughtering
 Page 17: Poultry Slaughtering

MARKET SUMMARY

Pigmeat

Grade E Pig
Prices (Ex.
VAT)

The Grade E Pig price for week commencing 11/02/2019 was €137.39 per 100Kg. in comparison to €138.30 in the same week last year, which represents a 0.7% decrease.

Further details available on page 13

Slaughtering

68,942 pigs were slaughtered in week 7 of which 2,070 were sows. The cumulative figure for pig slaughtering in 2019 is 472,615 which is up 2% against the same point last year.

Further details available on page 14

Sheepmeat

Sheepmeat
Prices (Ex.
VAT)

The national average price for the week commencing 11/02/2019 was €494.23 per 100Kg, an increase of 3.5% over the same week last year.

Further details available on page 15

Slaughtering

37,026 sheep were slaughtered at sheep export premises the week commencing 11/02/2019, compared to 45,939 in the same week of 2018. Sheep slaughtering for 2019 are 9% down on 2018 at 326,750 head.

Live Trade

Total live exports to European Countries stood at 20,769 head to the end of 2018.

Poultry

Slaughtering

Cumulative poultry slaughtering for 2019* stand at 14,253,936 birds at the end of week 7, up 11% compared to the same period last year.

Further details available on page 17

*Latest Figures are provisional and subject to change

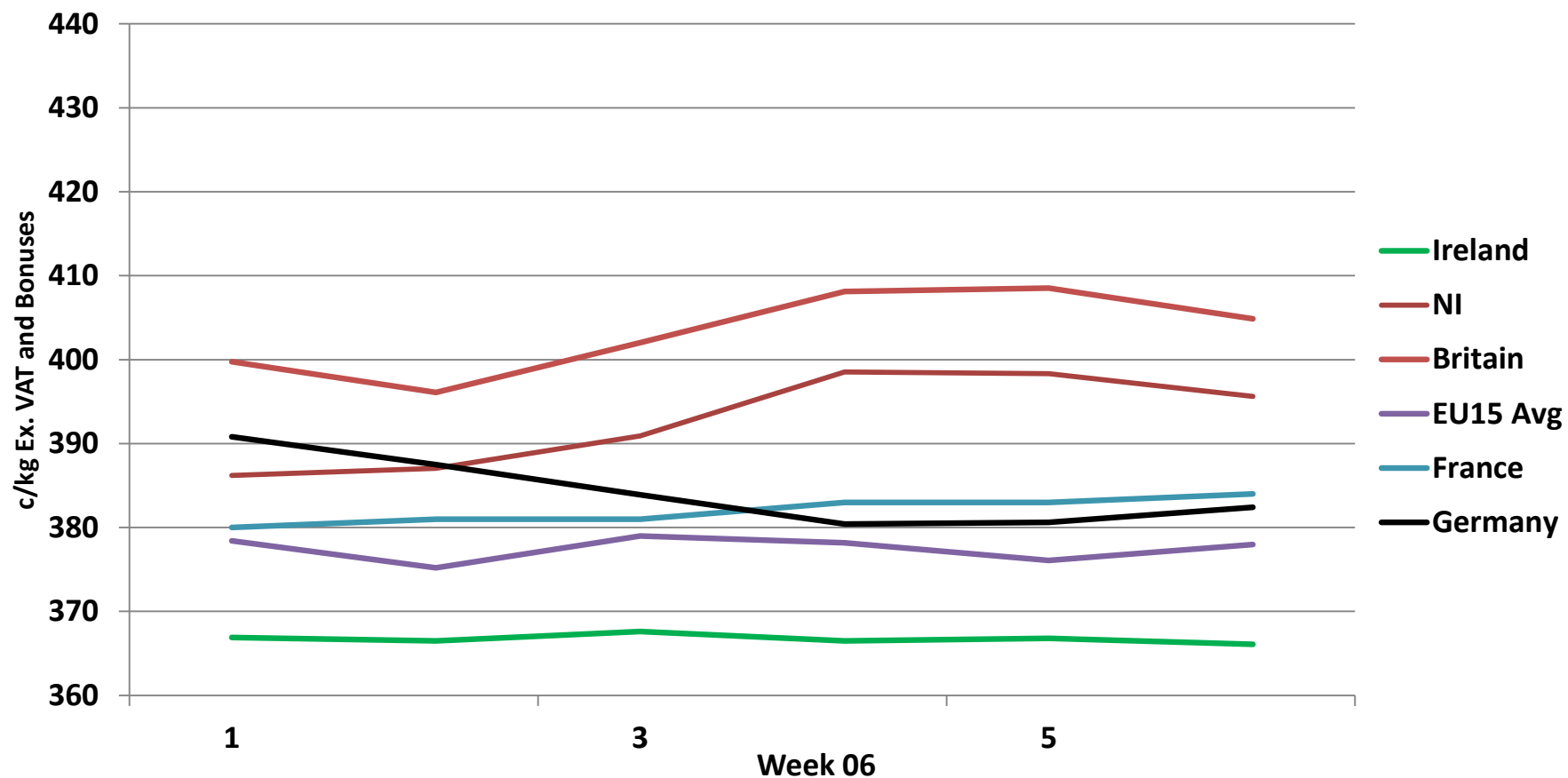
Dead Weight Prices	W/C	W/C	Same week 2018	% change prev week	% change 2018
	11/02/19	04/02/19	12/02/18		
Steers (R3) (c/kg)	366.4	366.1	383.8	0.1%	-4.5%
Heifers (R3) (c/kg)	379.5	379.9	396.4	-0.1%	-4.3%
Young Bulls (U3) (c/kg)	353.0	355.6	385.7	-0.7%	-8.5%
Cows (04) (c/kg)	267.9	269.1	322.8	-0.4%	-17.0%

Live Weight Prices	W/C	W/C	Same week 2017	% change previous week	% change 2018
	11/02/19	04/02/19	12/02/18		
Yearlings (Male) (Aged 365 - 730 days) - (€/100Kg)	191	184	205	3.8%	-6.8%
Yearlings (Female) (Aged 365 - 730 days) - (€/100Kg)	195	203	205	-3.9%	-4.9%
Young Stores (Male & Female) (Aged 180 - 364 days) - (€/100Kg)	214	213	236	0.5%	-9.3%
Bull Calf (€/head) Dairy	82.1	93.4	110.7	-12.1%	-25.8%
Bull Calf (€/head) Beef	197.6	202.3	237.0	-2.3%	-16.6%
Bull Calf (€/head) Average	139.8	147.8	173.9	-5.4%	-19.6%

Slaughter Figures	% of weekly figures	W/C	Same week 2018	Year to Date		Change 2019 v 2018	
		11-Feb-19		2019	2018	Head	%
Steers	31.7%	11,752	11,871	76,991	75,681	1,310	1.7%
Cows	20.0%	7,422	7,550	50,957	46,533	4,424	9.5%
Heifers	29.0%	10,760	9,977	77,244	69,917	7,327	10.5%
Young Bulls	17.4%	6,460	5,038	42,772	38,977	3,795	9.7%
Mature Bulls	1.7%	647	619	3,034	3,123	-89	-2.8%
Total	100%	37,041	35,055	250,998	234,231	16,767	7.2%

Live Exports	W/C	Same week	W/C	Year to Date		Change 2019 v 2018	
	11-Feb-19	2018	04-Feb-19	2019	2018	Head	%
Northern Ireland	675	296	569	4,076	1,744	2,332	134%
EU Except NI	6,779	5,889	4,011	16,416	9,381	7,035	75%
Third Countries	0	0	0	29	1,896	-1,867	-
Total	7,454	6,185	4,580	20,521	13,021	7,500	58%

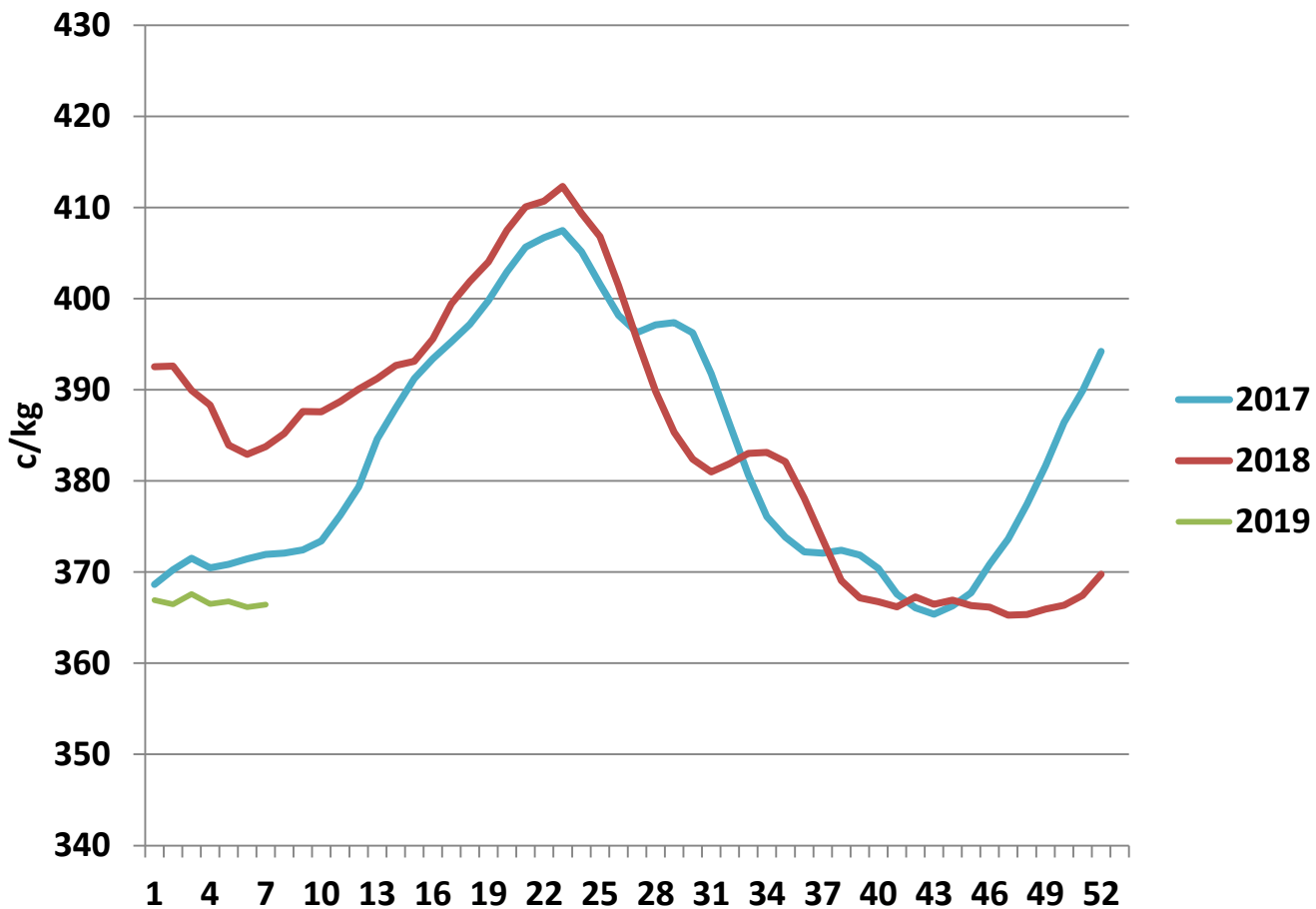
Irish Deadweight Cattle Prices vs Selected Other Markets, 2019



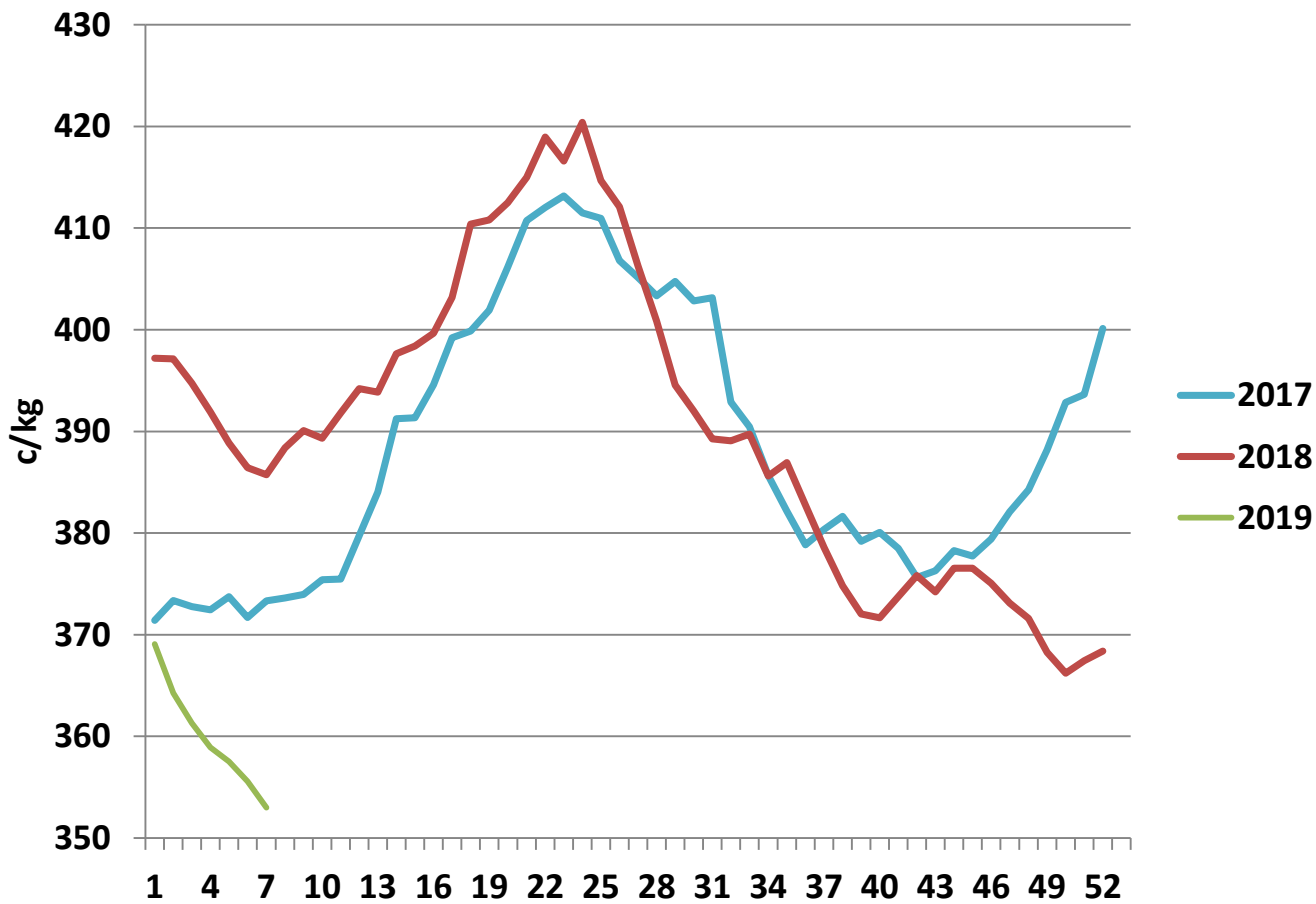
Livestock Pricing

	Ireland	NI	Britain	EU 15 Average	France	Germany
W/C 04/02/19	366.1	395.63	404.85	377.98	384	382.4

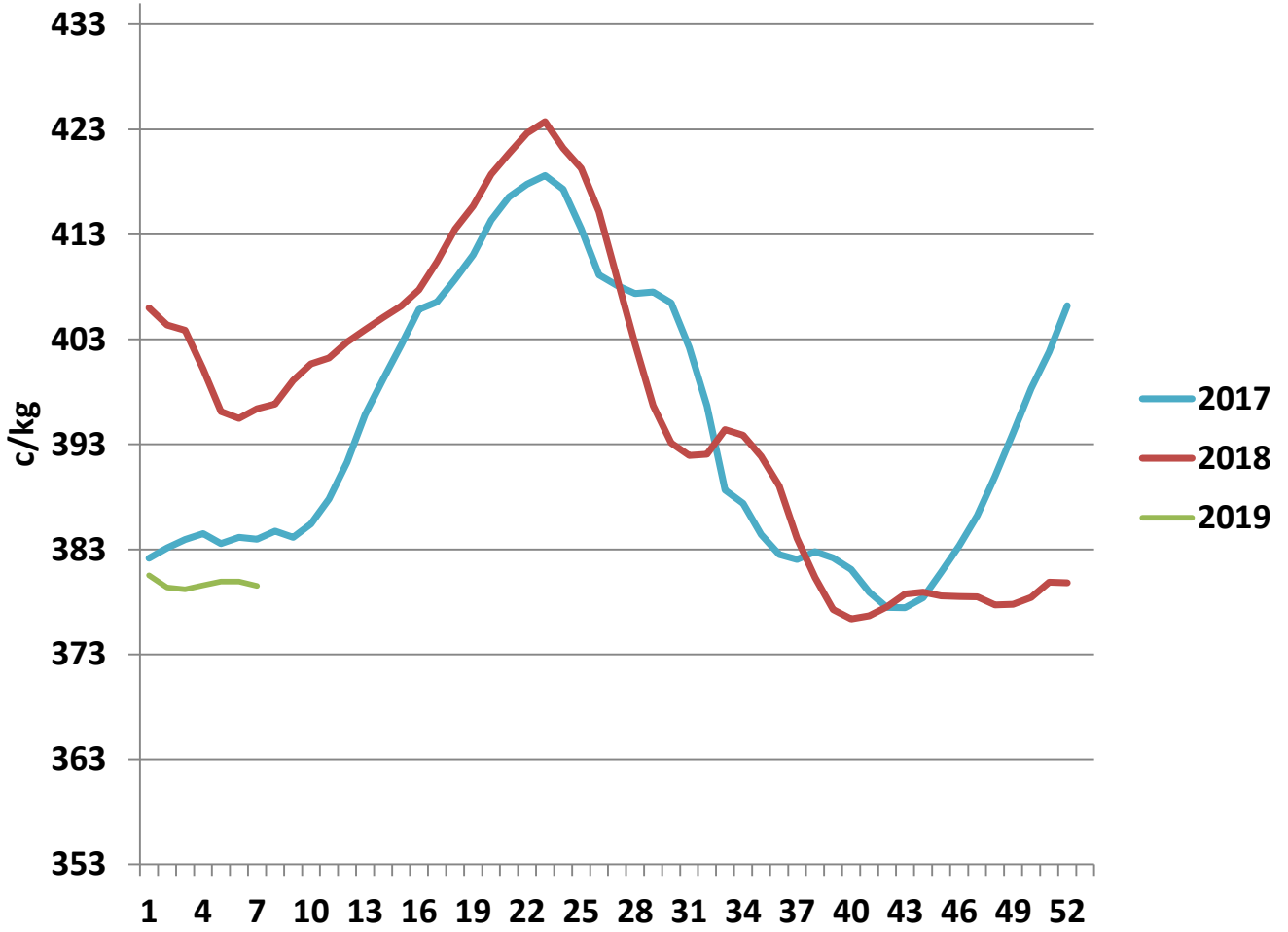
R3 Steer prices ex. VAT



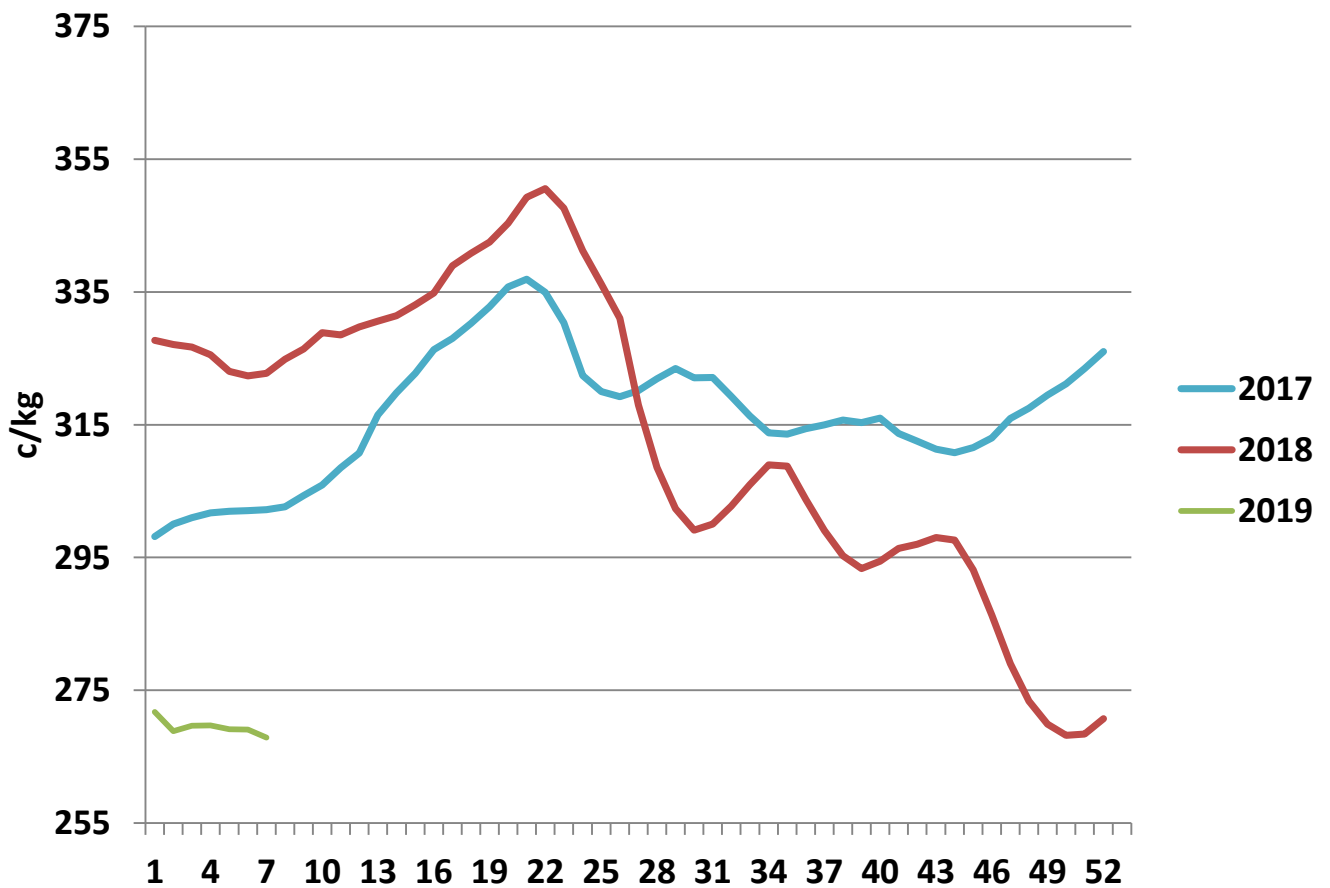
U3 Young Bull prices ex. VAT

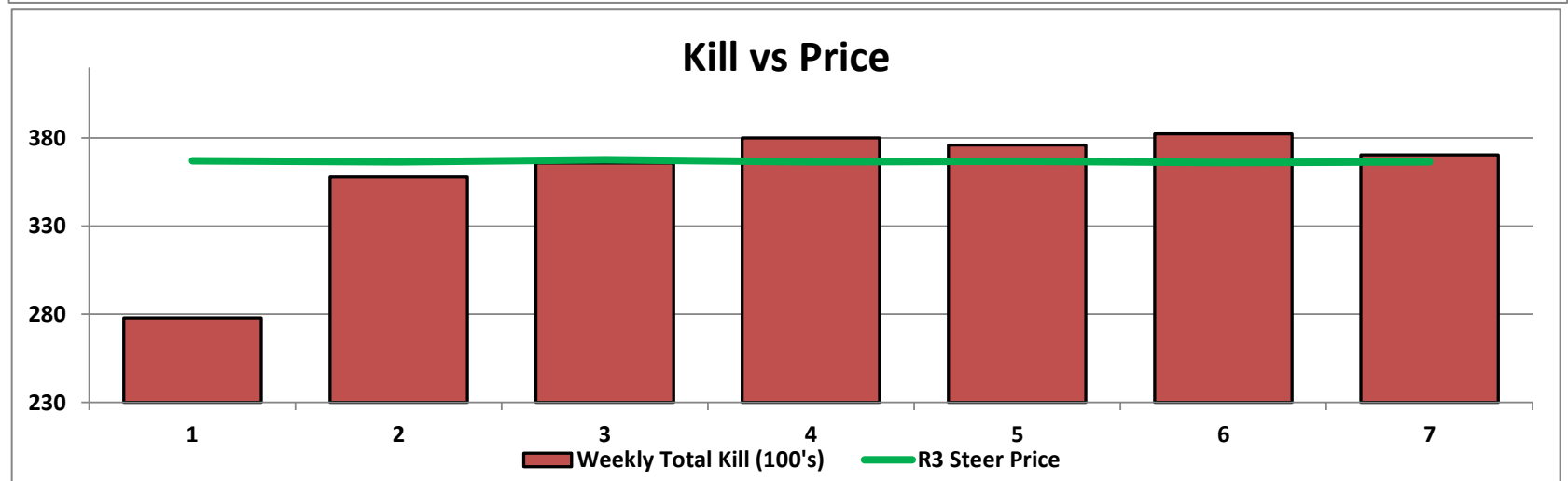
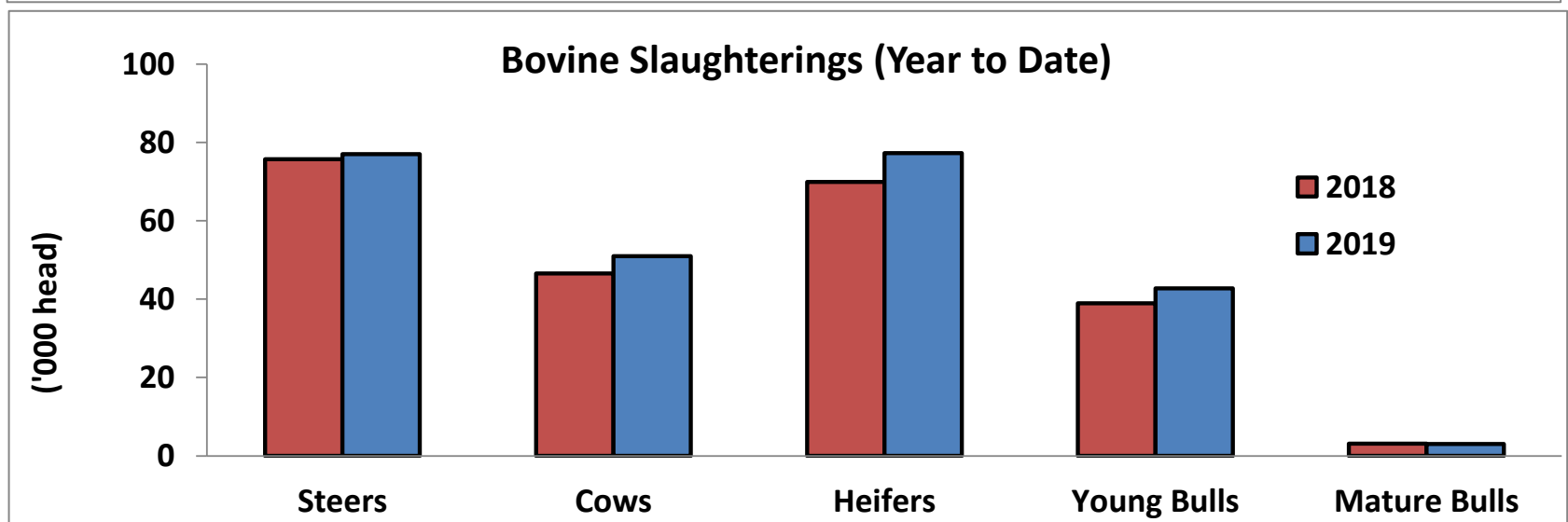
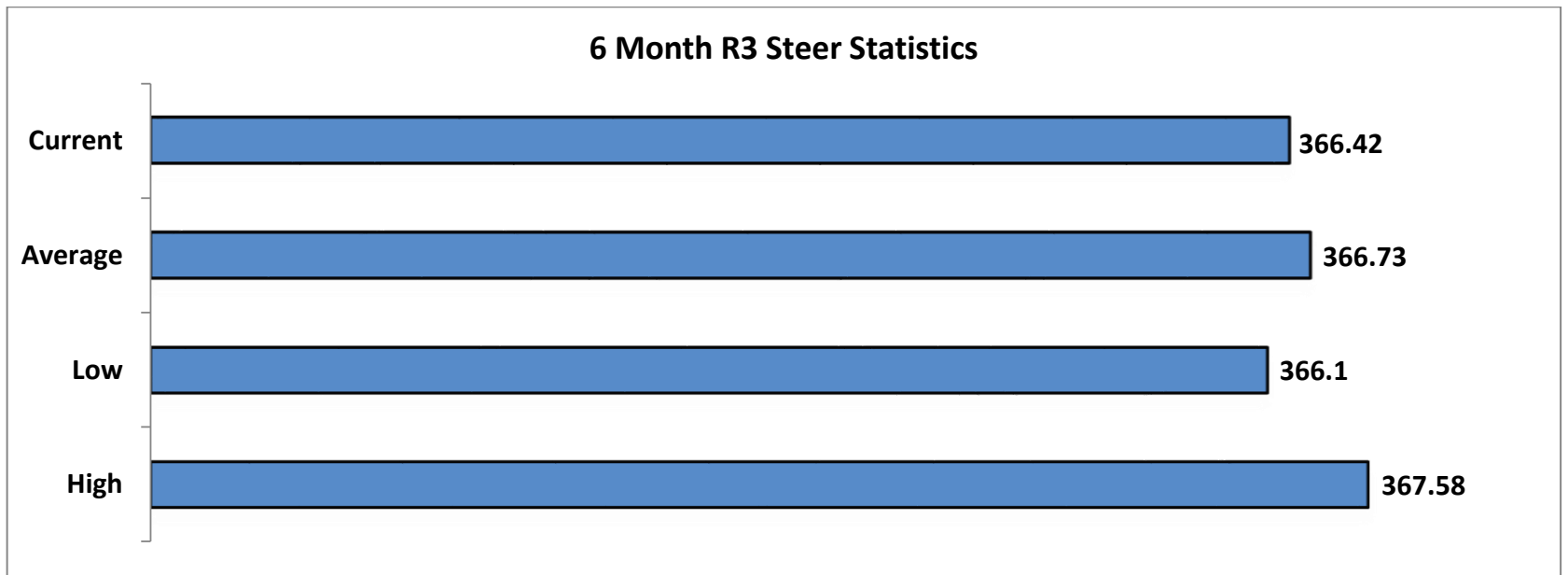


R3 Heifer prices ex. VAT

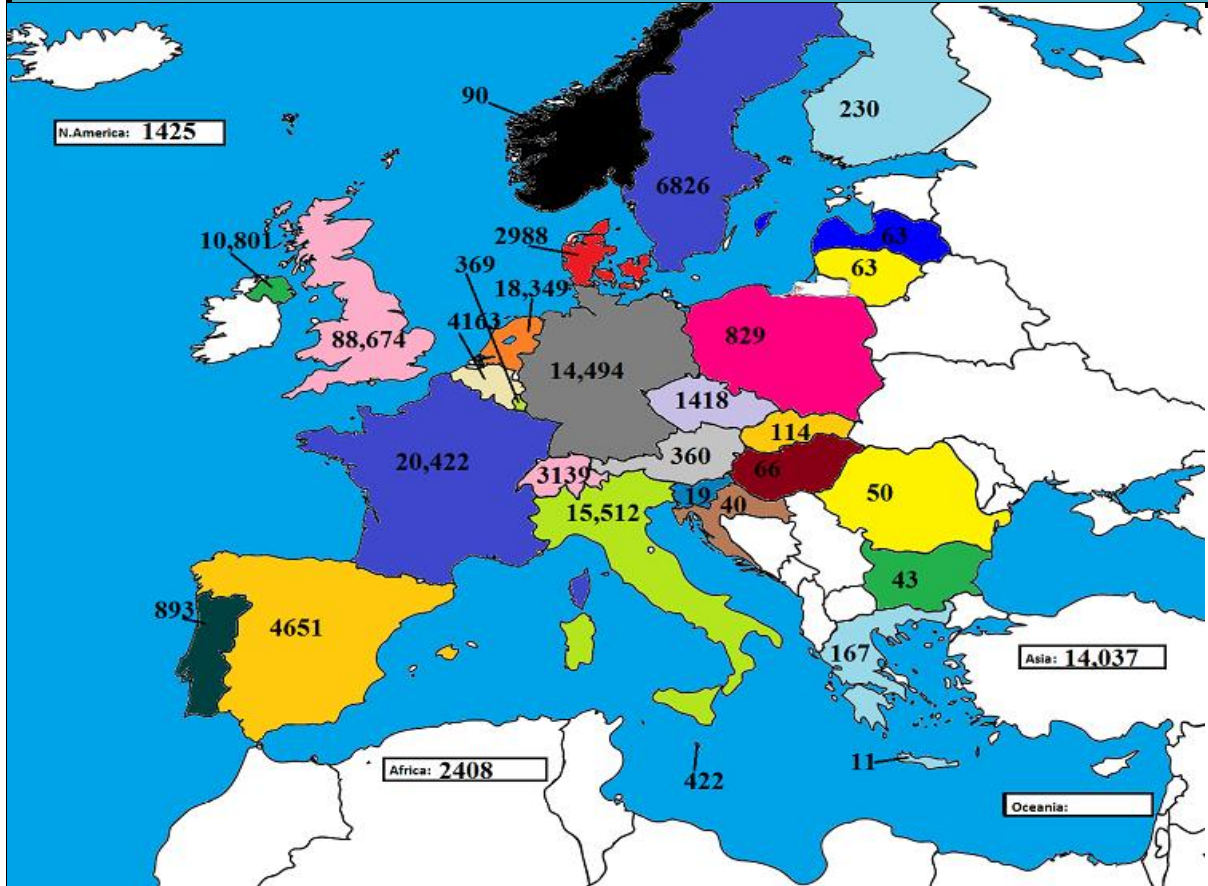


O4 Cow prices ex. VAT

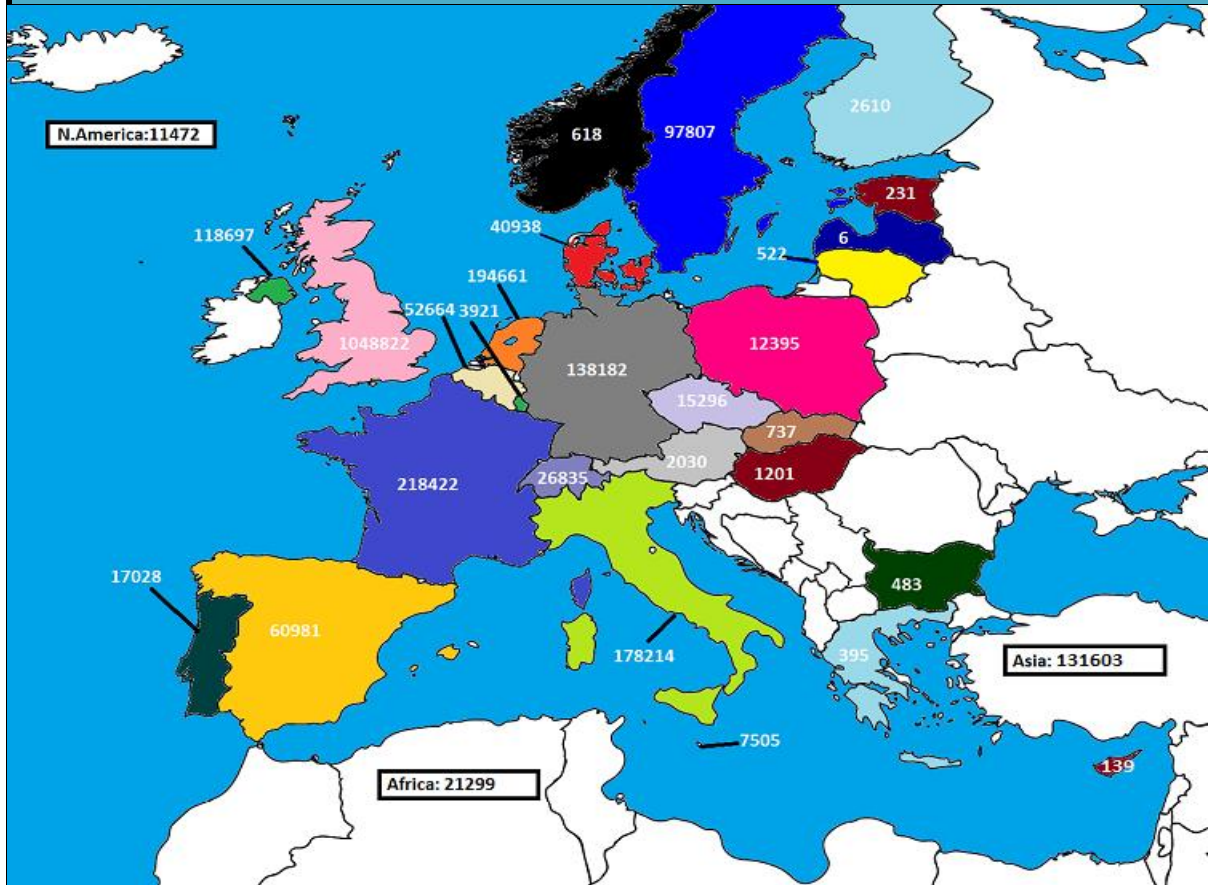




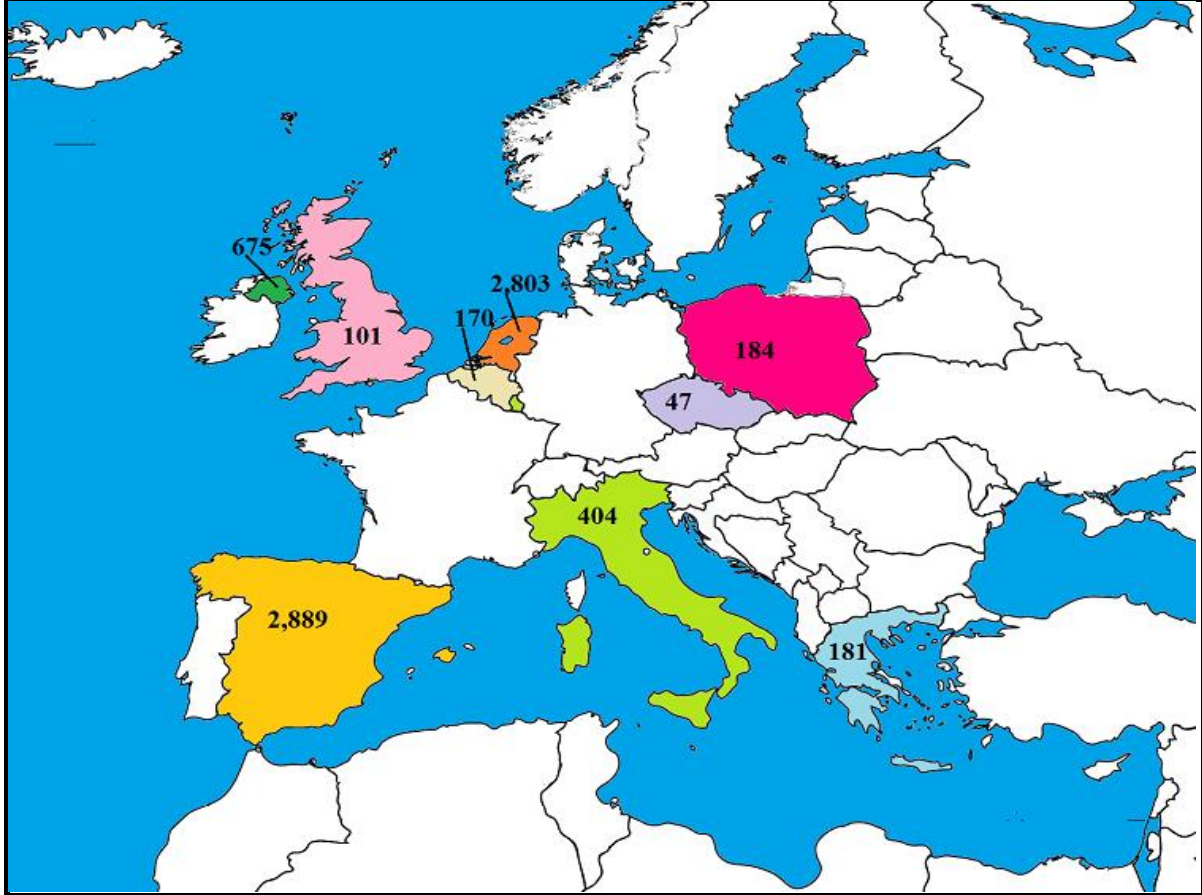
November 2018 Beef exports, €000 (CSO figures)



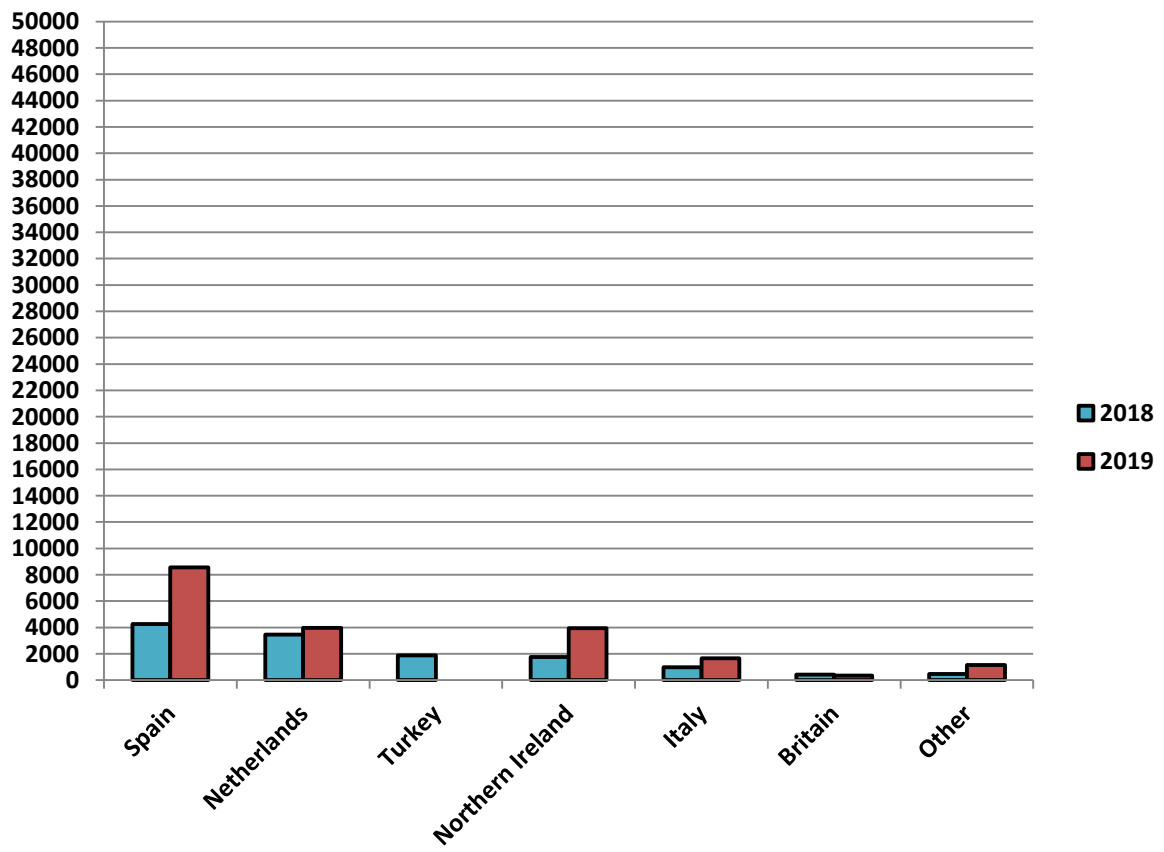
Cumulative beef exports to Dec 2017, €000 (CSO figures)

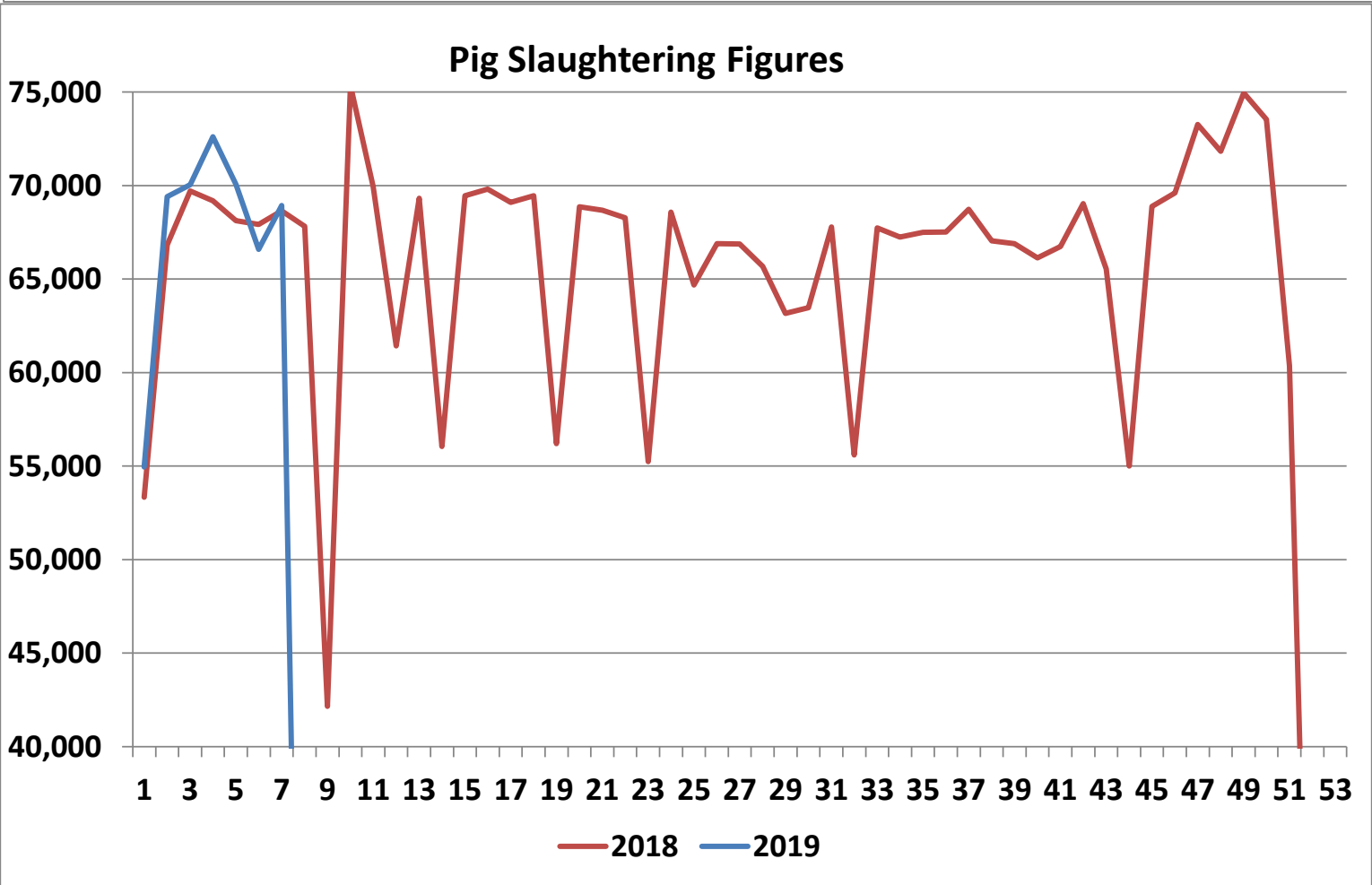
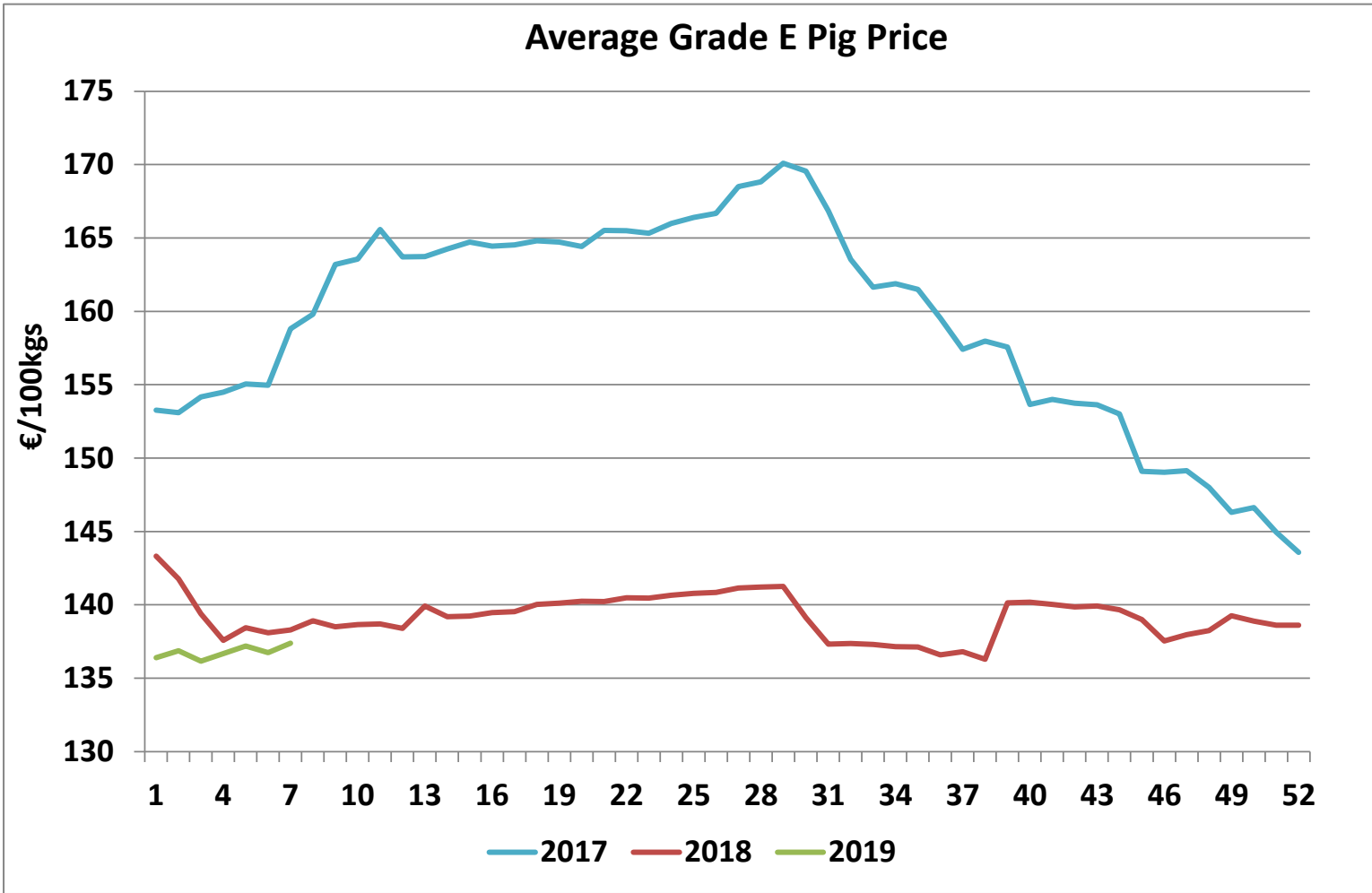


Cattle exported, w/c 11/02/19



Cumulative cattle export figures, 2019





Sheepmeat Information for week 7

11/02/2019 - 17/02/2019

Irish Prices €/100 kg	2019	2018	Change
Ave Factory Price	512.50	504.84	1.5%
Ave Mart Price	451.59	413.77	9.1%
National Ave Price	494.23	477.52	3.5%
YTD Ave	482.98	453.51	6.5%

Slaughterings	2019	2018	Change
Weekly	37,026	45,939	-19%
YTD	326,750	358,229	-9%

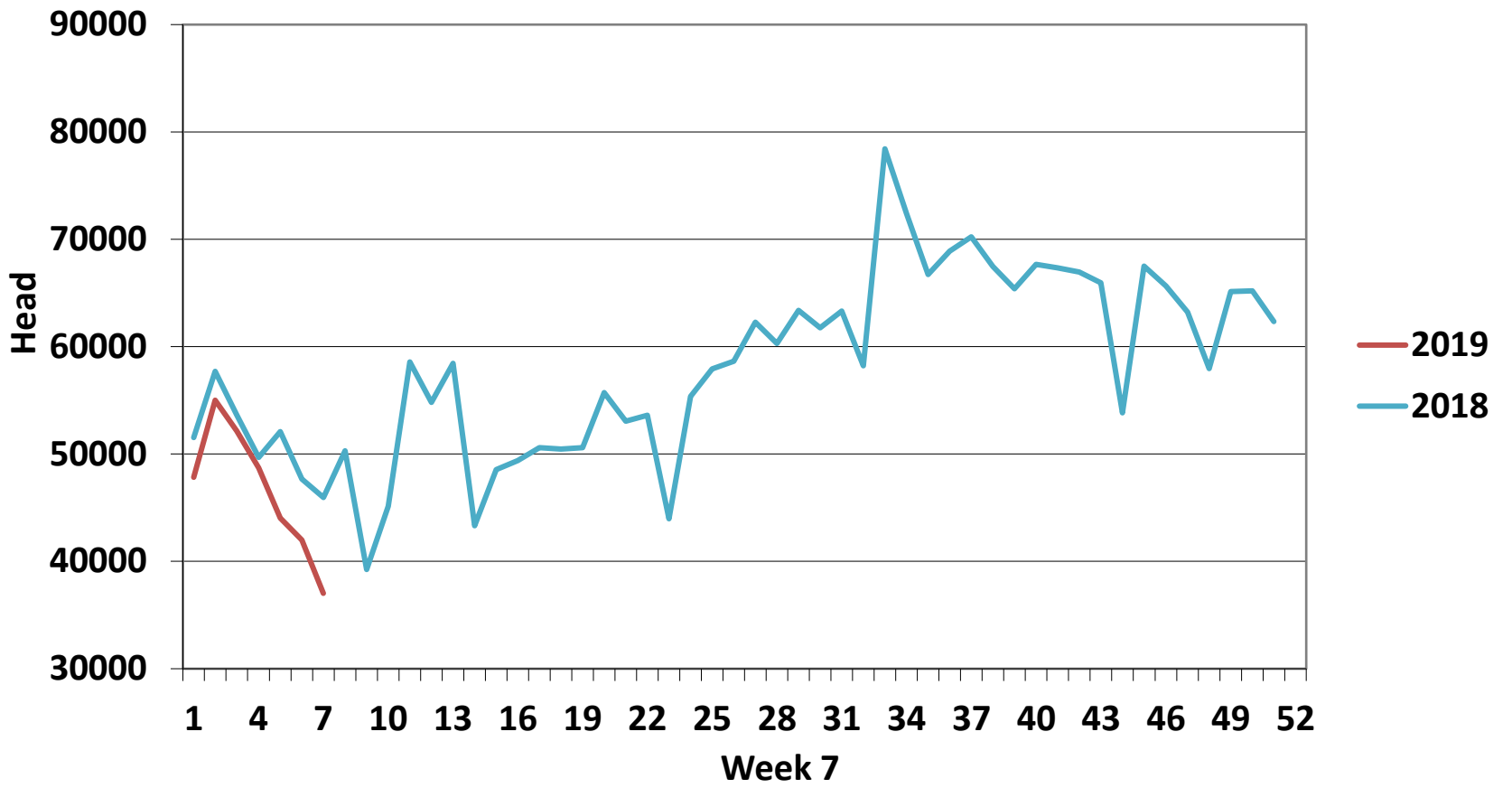
EU Market Rates Heavy Lambs	€/100kg	% of Commu Price
Belgium	485.0	97%
Denmark	450.9	90%
Germany	519.7	104%
Spain	508.0	102%
France	570.0	114%
Croatia	372.1	75%
Ireland	494.2	99%
Italy	526.0	106%
Cyprus	524.0	105%
Latvia	398.2	80%
Lithuania	467.3	94%
Netherlands	488.6	98%
Austria	587.0	118%
Poland	434.3	87%
Romania	241.4	48%
Finland	353.8	71%
Sweden	477.2	96%
Northern Ireland	467.6	94%
Great Britain	483.4	97%
United Kingdom	482.2	97%
Community	498.2	100%

REPORT ON SLAUGHTERING AT SHEEP EXPORT PREMISES

WEEK 07 11/02/2019 - 17/02/2019

CATEGORY	2019		2018		DIFFERENCE	
	Weekly	Cumulative	Weekly	Cumulative	Weekly	Cumulative
Lambs/Hoggets	31,766	255,490	38,609	301,088	-6843	45,598
Spring Lambs	-	12,825	-	-	0	12,825
Ewes and Rams	5,259	58,433	7,324	57,114	-2,065	1,319
Light Lambs	1	2	6	27	-5	25
TOTAL	37,026	326,750	45,939	358,229	-8,913	-31,479

Weekly Sheep Slaughterings



Ave. Price €/100 kg for Sheepmeat

