

Meat Market Report

18/02/19 - 24/02/19

Week

08



**An Roinn Talmhaíochta,
Bia agus Mara**

Department of Agriculture,
Food and the Marine

MARKET SUMMARY

Beef

Deadweight Prices c/100Kg (Including VAT)

	U3	U4	R3	R4	O3	O4	P+
Steers	396.0	391.5	386.6	387.8	369.7	374.4	345.6
Heifers	413.3	411.8	399.7	399.1	381.5	382.8	347.9
Young Bulls	370.6	367.7	359.7	359.1	341.9	343.1	327.0
Cows			310.5	309.7	281.1	281.9	268.7

Liveweight Prices

*Bull Calf Average Price	€129.6 per head (Excluding VAT)
**Young Store Average Price	€213.0 per 100kg (Excluding VAT)
***Yearling (male & female) Price	€193.0 per 100kg (Excluding VAT)

* Aged 8-28 days ** Aged 180-364 days, Male & Female ***age 365-730 days

Slaughtering

35,869 cattle slaughtered this week, of which steers were 11,266 (31%), heifers 10,894 (30%), young bulls 5,910 (16%) and cows 7,343 (20%). Total YTD slaughter is 286,867 compared to 268,480 in 2018, a 7% increase.

Live Trade

7,454 cattle were exported in the week commencing 11/02/2019 6,779 to EU (Except NI). Live exports for 2019 amount to 20,521 compared to 13,021 in 2018, up 58% on 2018 levels.

*This data is provisional and subject to revision.

The next meeting of the Management Committee for the Common Organisation of Agricultural Markets (Animal Products Sector) is 21 February 2019

CONTENTS:

Page 2: Market Summary Beef
 Page 3: Market Summary Other Meats
 Page 4: Beef Price and Slaughter Summary
 Page 5: Comparative Beef Prices
 Page 6: Steer and Young Bull Price
 Page 7: Heifer and Cow Graphs
 Page 8: Price and Slaughter Graphs
 Page 9: Liveweight Beef Graphs

Page 10: Beef Export Maps
 Page 11: Beef Export Info
 Page 12: Market Access Update
 Page 13: Pig Price Graph
 Page 14: Pig Slaughtering
 Page 15: Sheep Prices
 Page 16: Sheep Slaughtering
 Page 17: Poultry Slaughtering

MARKET SUMMARY

Pigmeat

Grade E Pig
Prices (Ex.
VAT)

The Grade E Pig price for week commencing 18/02/2019 was €137.71 per 100Kg. in comparison to €138.92 in the same week last year, which represents a 0.9% decrease.

[Further details available on page 13](#)

Slaughtering

68,672 pigs were slaughtered in week 8 of which 1,691 were sows. The cumulative figure for pig slaughtering in 2019 is 541,287 which is up 2% against the same point last year.

[Further details available on page 14](#)

Sheepmeat

Sheepmeat
Prices (Ex.
VAT)

The national average price for the week commencing 18/02/2019 was €478.47 per 100Kg, an decrease of 1.9% over the same week last year.

[Further details available on page 15](#)

Slaughtering

38,739 sheep were slaughtered at sheep export premises the week commencing 18/02/2019, compared to 50,286 in the same week of 2018. Sheep slaughtering for 2019 are 11% down on 2018 at 365,489 head.

Live Trade

Total live exports to European Countries stood at 20,769 head to the end of 2018.

Poultry

Slaughtering

Cumulative poultry slaughtering for 2019* stand at 14,253,936 birds at the end of week 7, up 11% compared to the same period last year.

[Further details available on page 17](#)

*Latest Figures are provisional and subject to change

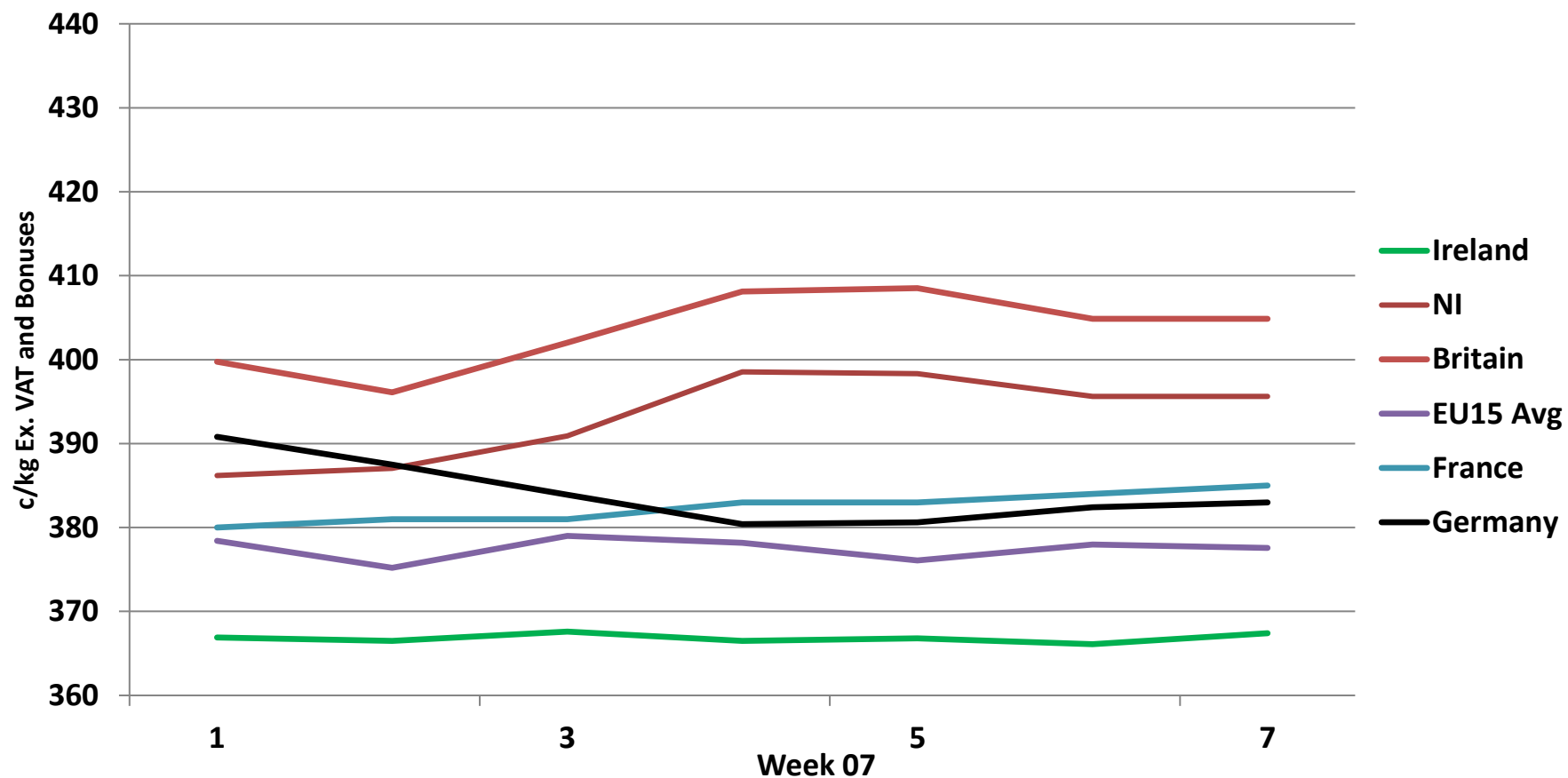
Dead Weight Prices	W/C	W/C	Same week 2018	% change prev week	% change 2018
	18/02/19	11/02/19	19/02/18		
Steers (R3) (c/kg)	366.8	366.4	385.2	0.1%	-4.8%
Heifers (R3) (c/kg)	379.3	379.5	396.8	-0.1%	-4.4%
Young Bulls (U3) (c/kg)	351.6	353.0	388.4	-0.4%	-9.5%
Cows (04) (c/kg)	267.5	267.9	324.8	-0.2%	-17.7%

Live Weight Prices	W/C	W/C	Same week 2017	% change previous week	% change 2018
	18/02/19	11/02/19	19/02/18		
Yearlings (Male) (Aged 365 - 730 days) - (€/100Kg)	188	191	207	-1.6%	-9.2%
Yearlings (Female) (Aged 365 - 730 days) - (€/100Kg)	198	195	209	1.5%	-5.3%
Young Stores (Male & Female) (Aged 180 - 364 days) - (€/100Kg)	213	214	236	-0.5%	-9.7%
Bull Calf (€/head) Dairy	76.0	82.1	115.6	-7.5%	-34.3%
Bull Calf (€/head) Beef	183.3	197.6	232.3	-7.2%	-21.1%
Bull Calf (€/head) Average	129.6	139.8	173.9	-7.3%	-25.5%

Slaughter Figures	% of weekly figures	W/C	Same week 2018	Year to Date		Change 2019 v 2018	
		18-Feb-19		2019	2018	Head	%
Steers	31.4%	11,266	11,168	88,257	86,849	1,408	1.6%
Cows	20.5%	7,343	7,419	58,300	53,952	4,348	8.1%
Heifers	30.4%	10,894	10,124	88,138	80,041	8,097	10.1%
Young Bulls	16.5%	5,910	4,871	48,682	43,848	4,834	11.0%
Mature Bulls	1.3%	456	667	3,490	3,790	-300	-7.9%
Total	100%	35,869	34,249	286,867	268,480	18,387	6.8%

Live Exports	W/C	Same week	W/C	Year to Date		Change 2019 v 2018	
	11-Feb-19	2018	04-Feb-19	2019	2018	Head	%
Northern Ireland	675	296	569	4,076	1,744	2,332	134%
EU Except NI	6,779	5,889	4,011	16,416	9,381	7,035	75%
Third Countries	0	0	0	29	1,896	-1,867	-
Total	7,454	6,185	4,580	20,521	13,021	7,500	58%

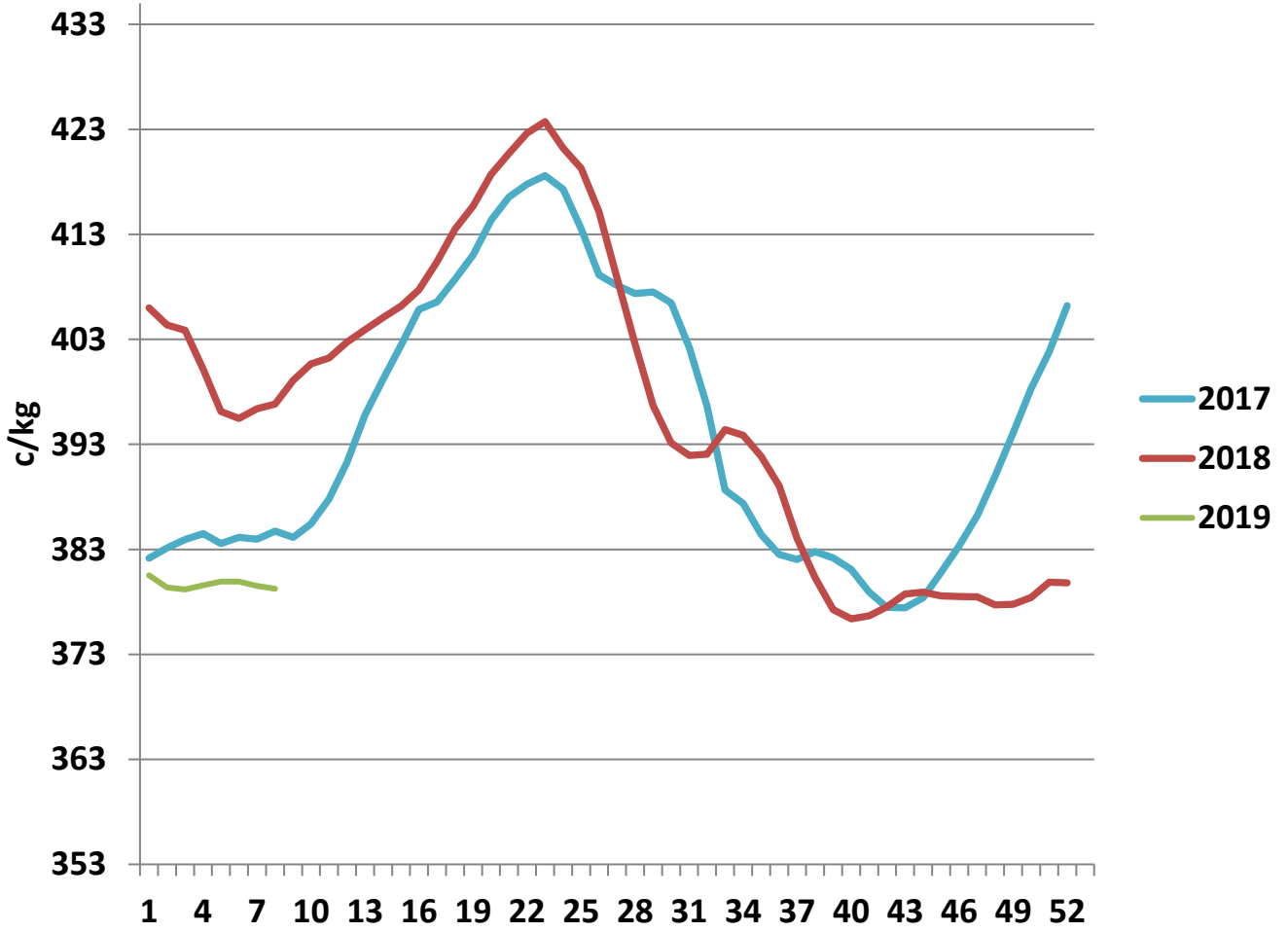
Irish Deadweight Cattle Prices vs Selected Other Markets, 2019



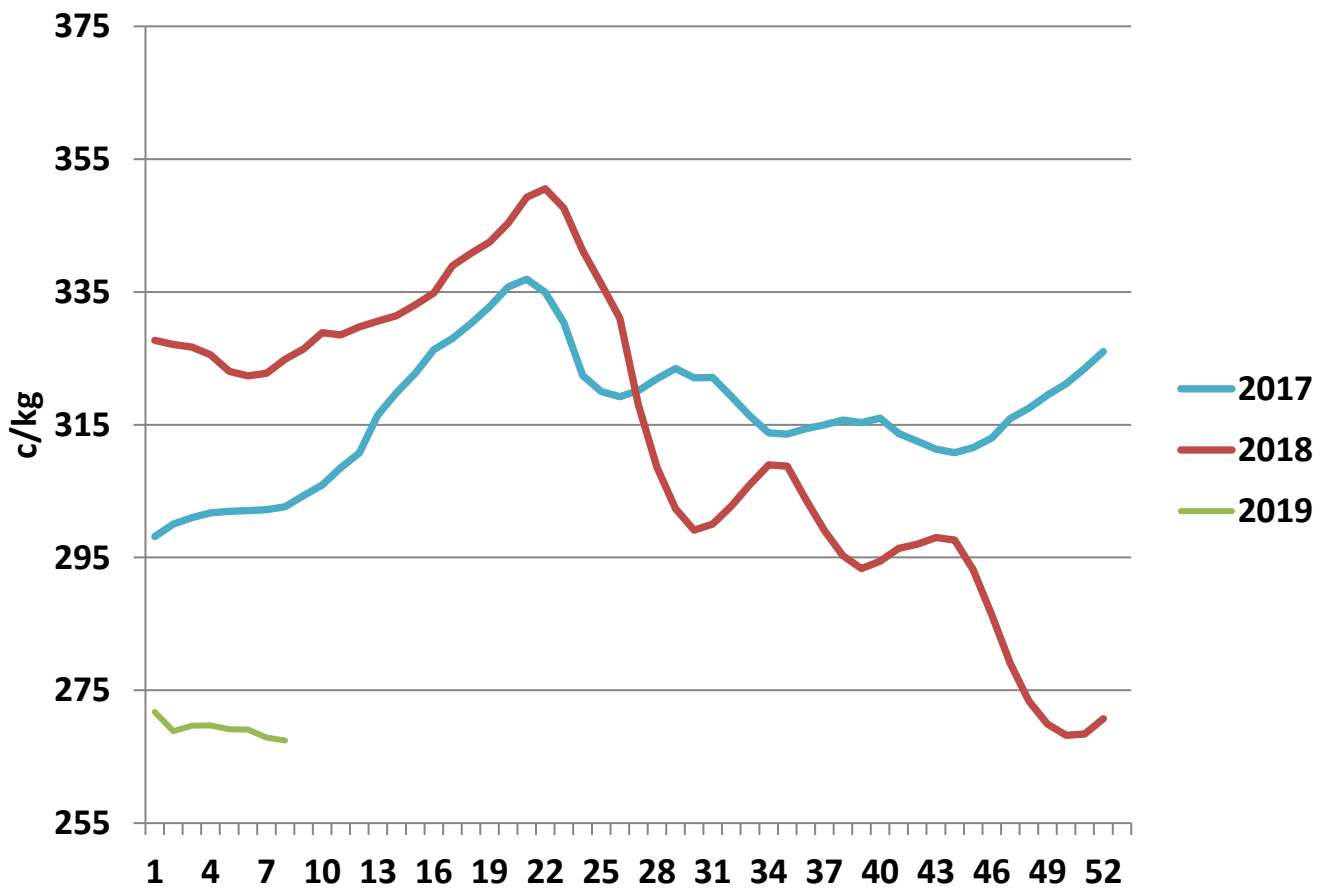
Livestock Pricing

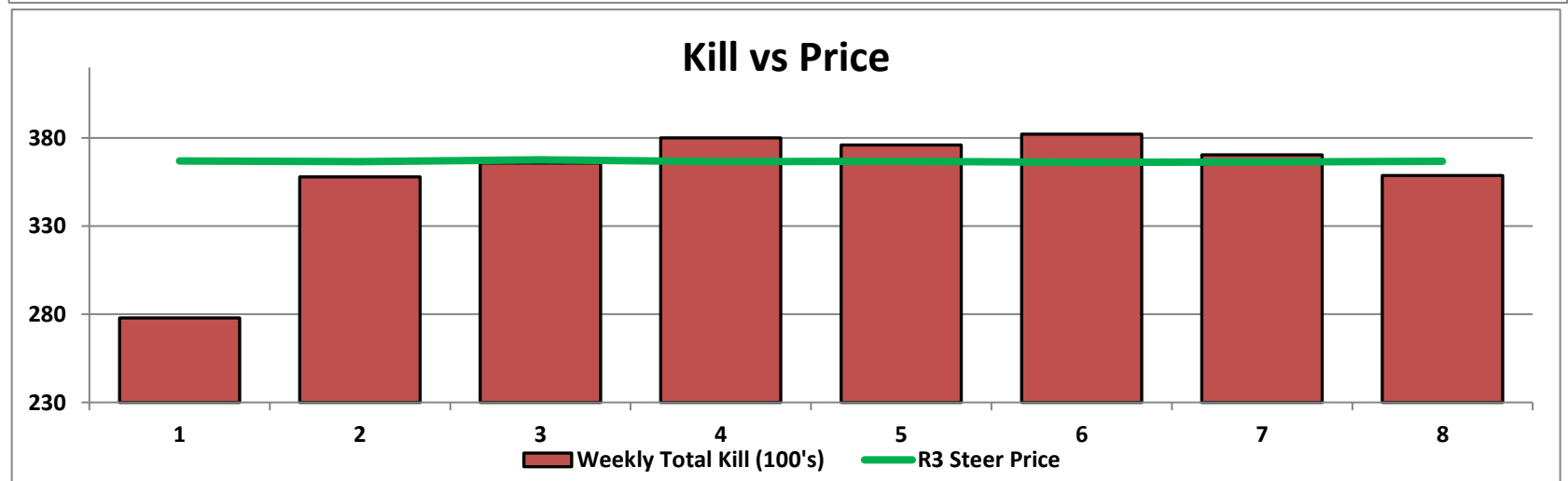
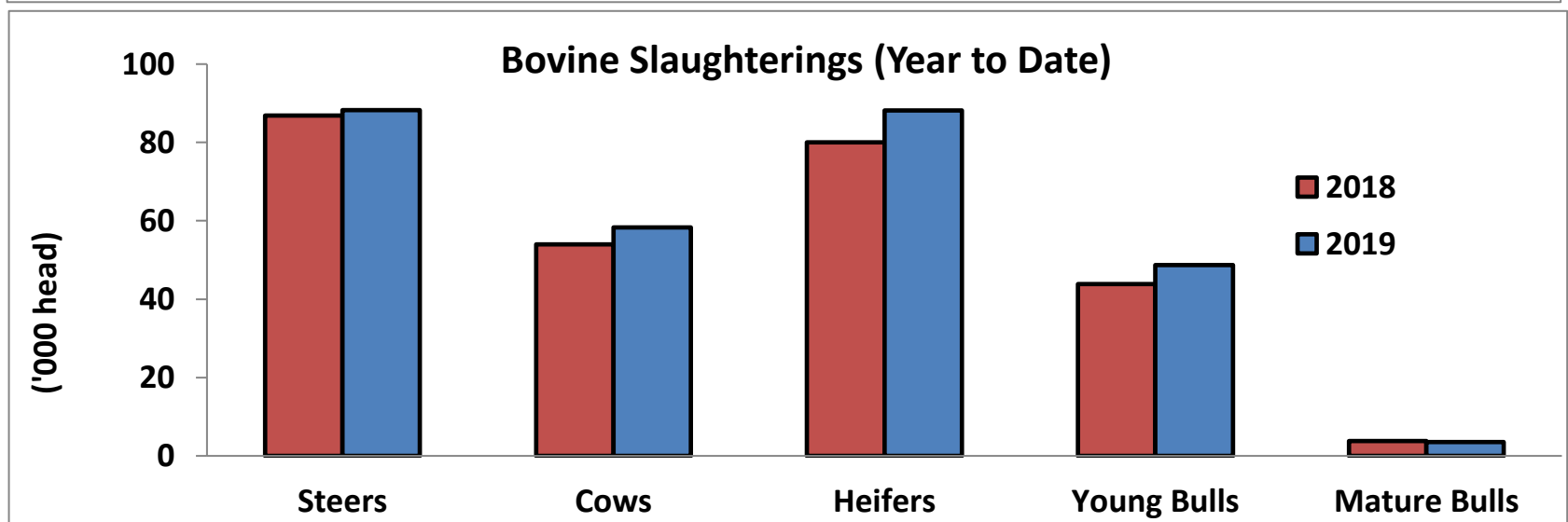
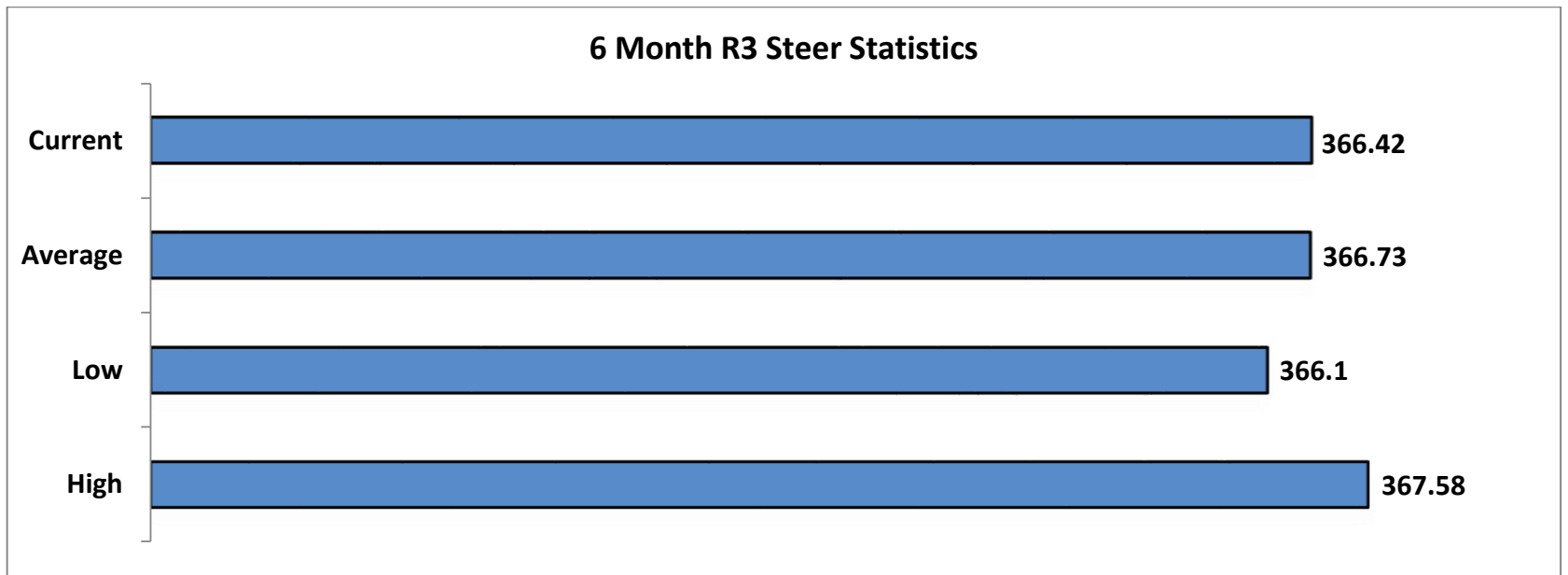
	Ireland	NI	Britain	EU 15 Average	France	Germany
W/C 11/02/19	367.4	395.63	404.85	377.58	385	383

R3 Heifer prices ex. VAT

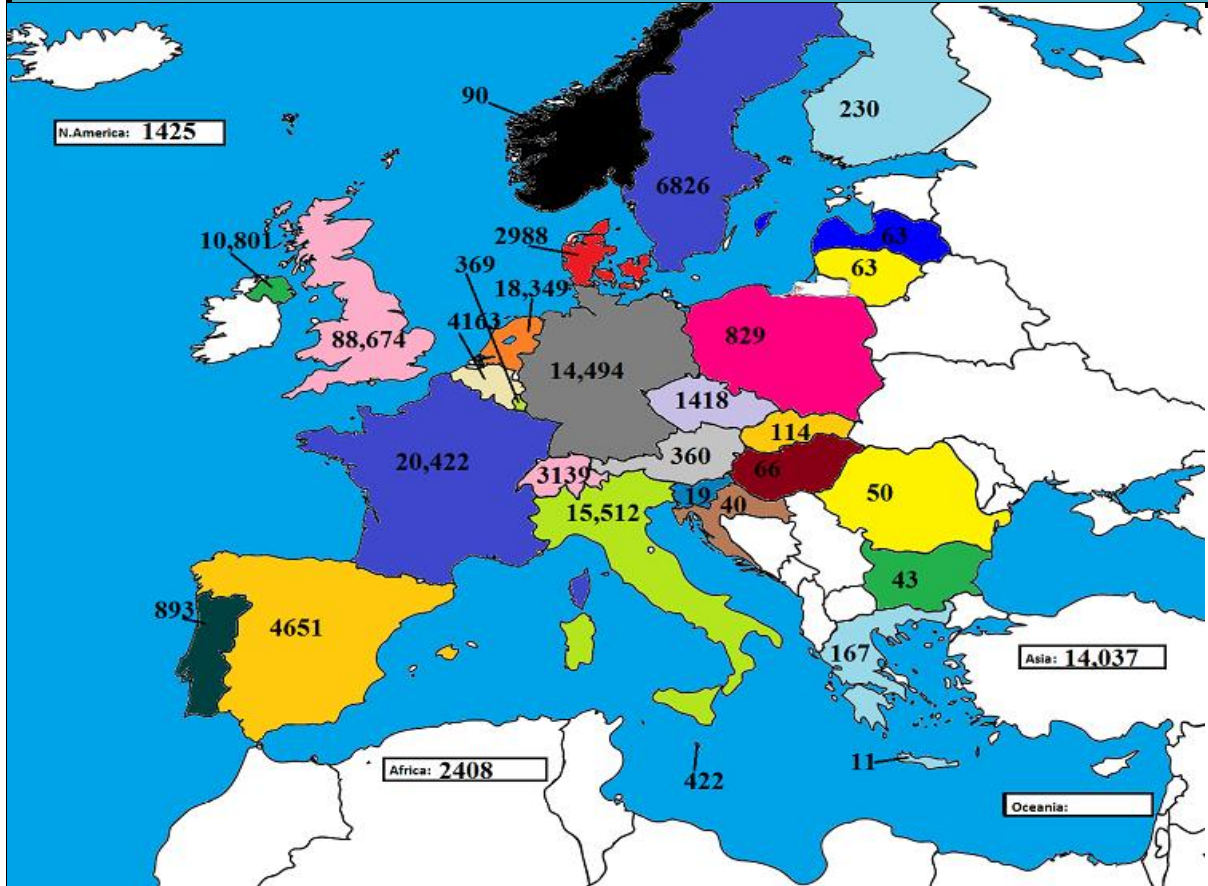


O4 Cow prices ex. VAT

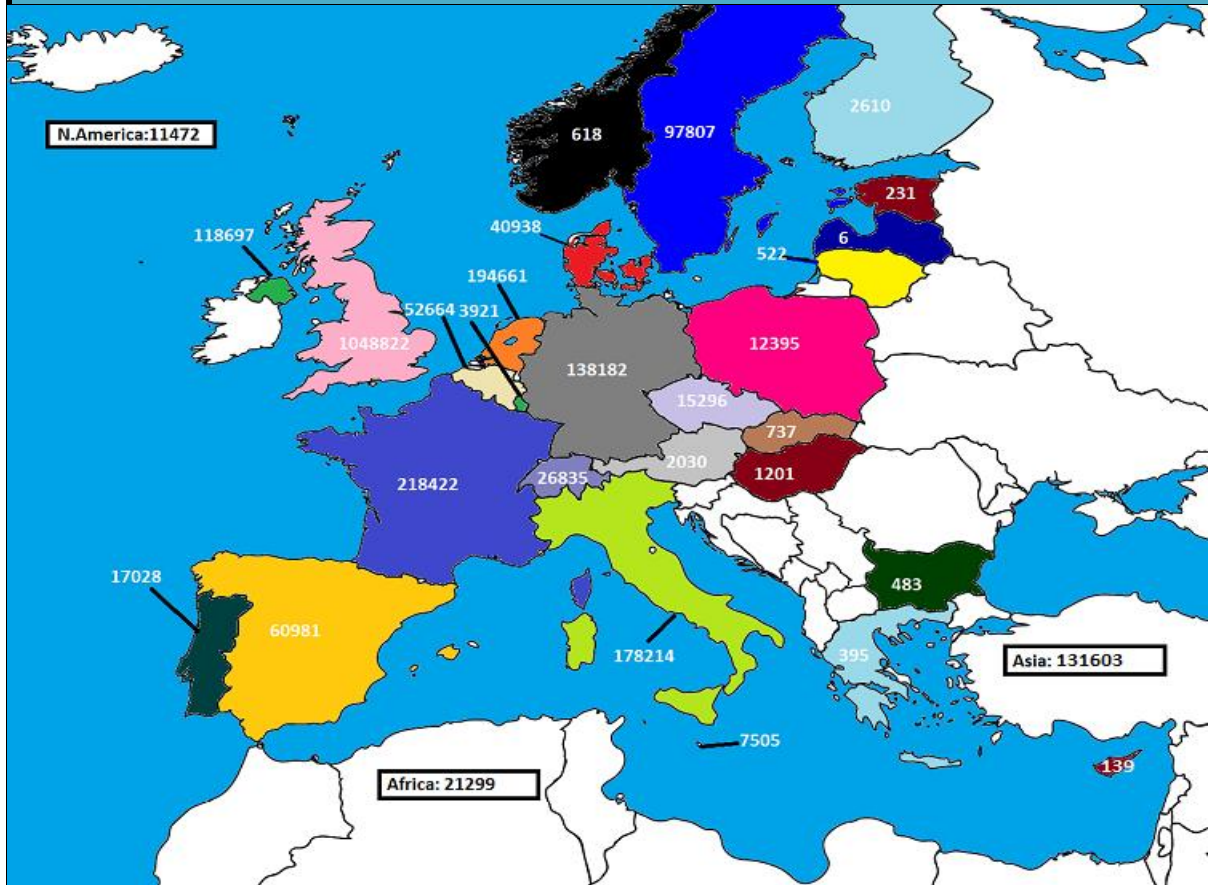




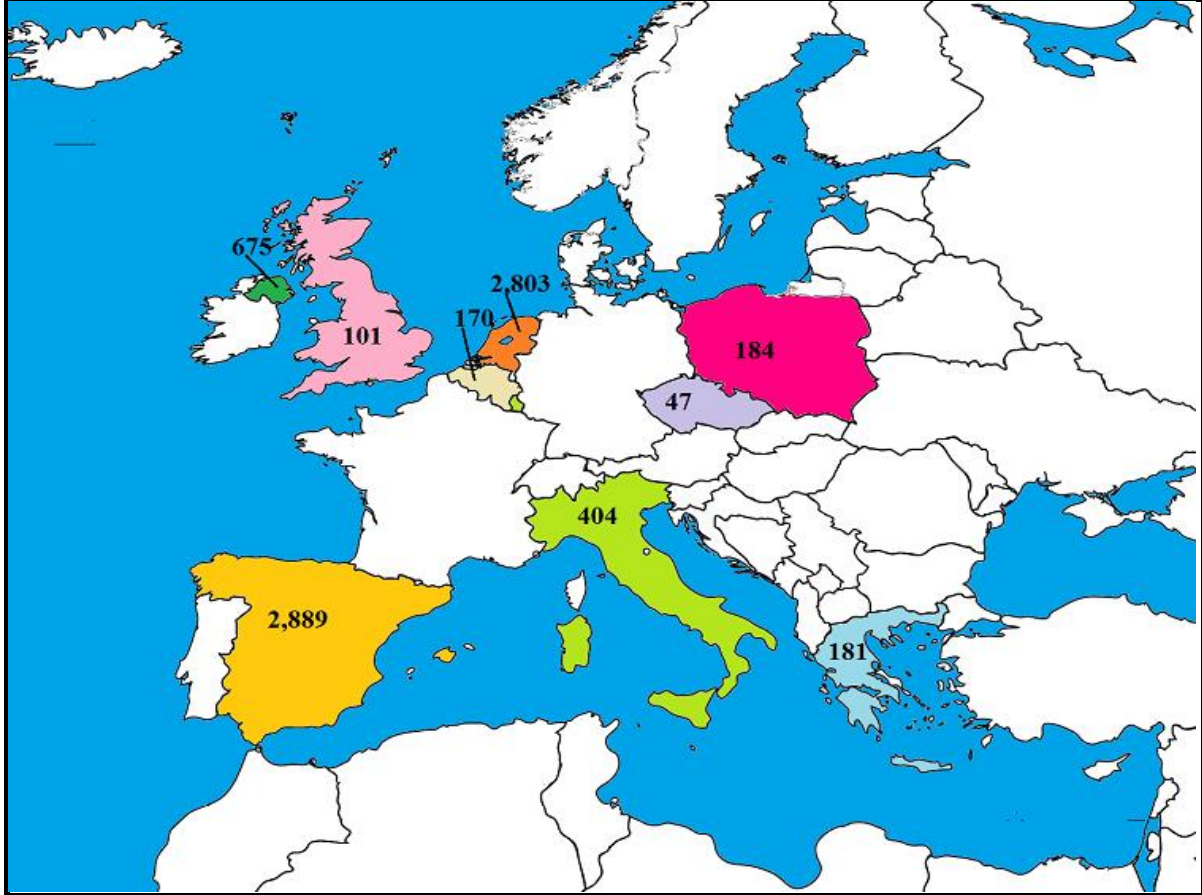
November 2018 Beef exports, €000 (CSO figures)



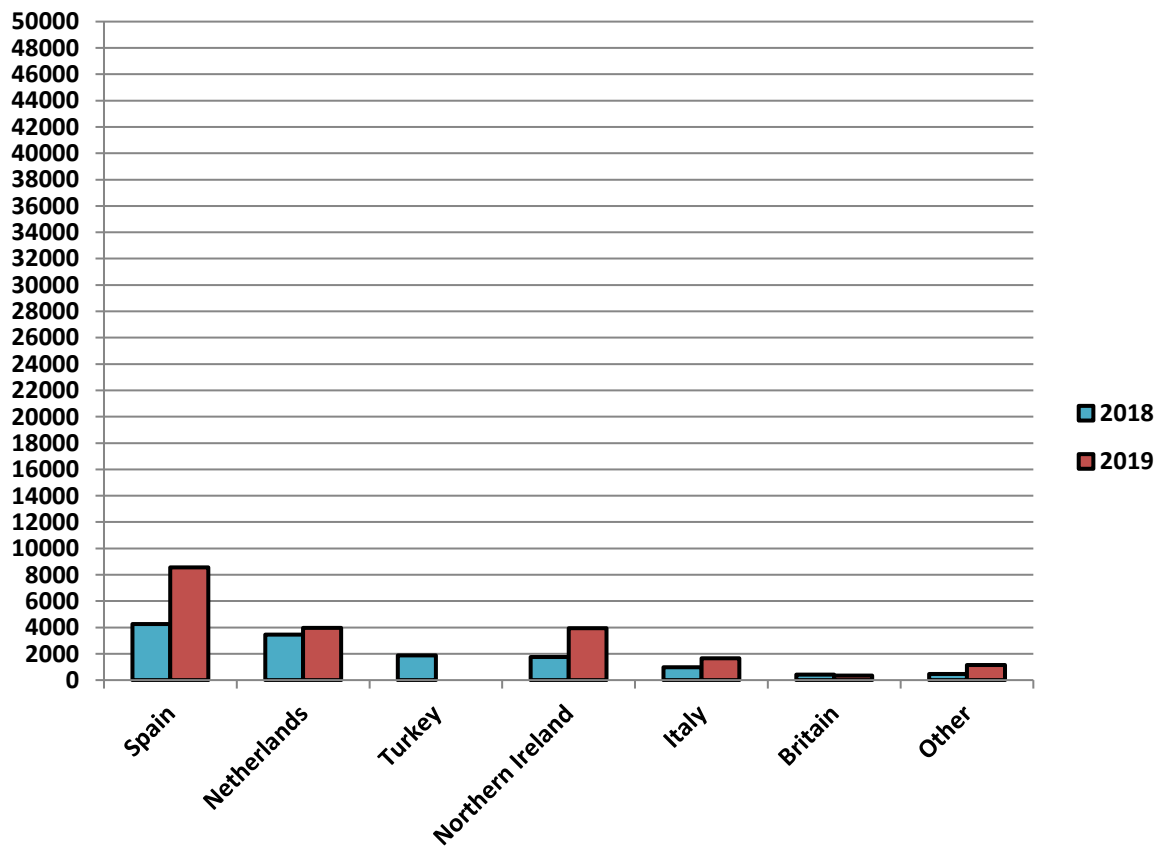
Cumulative beef exports to Dec 2017, €000 (CSO figures)



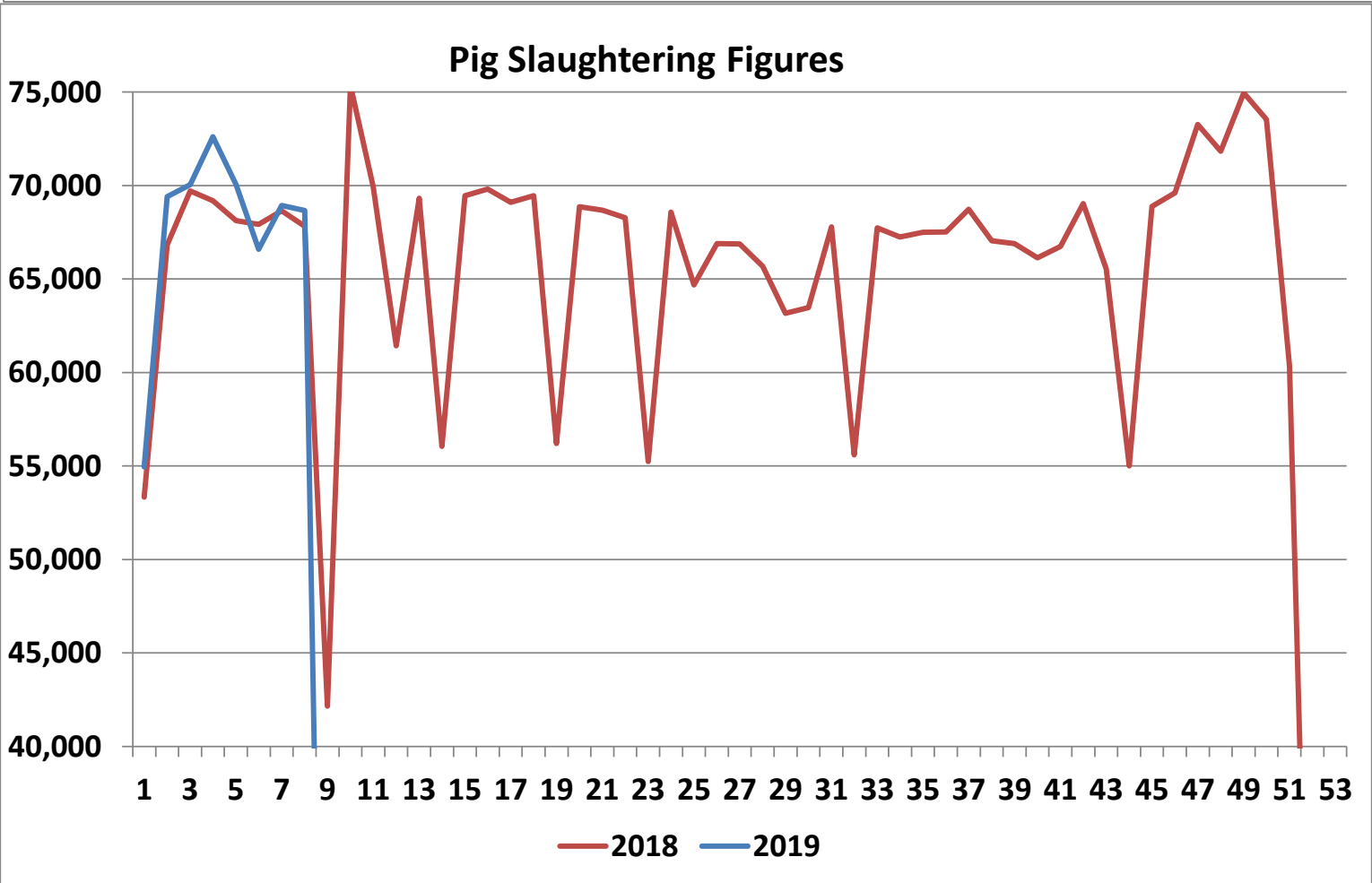
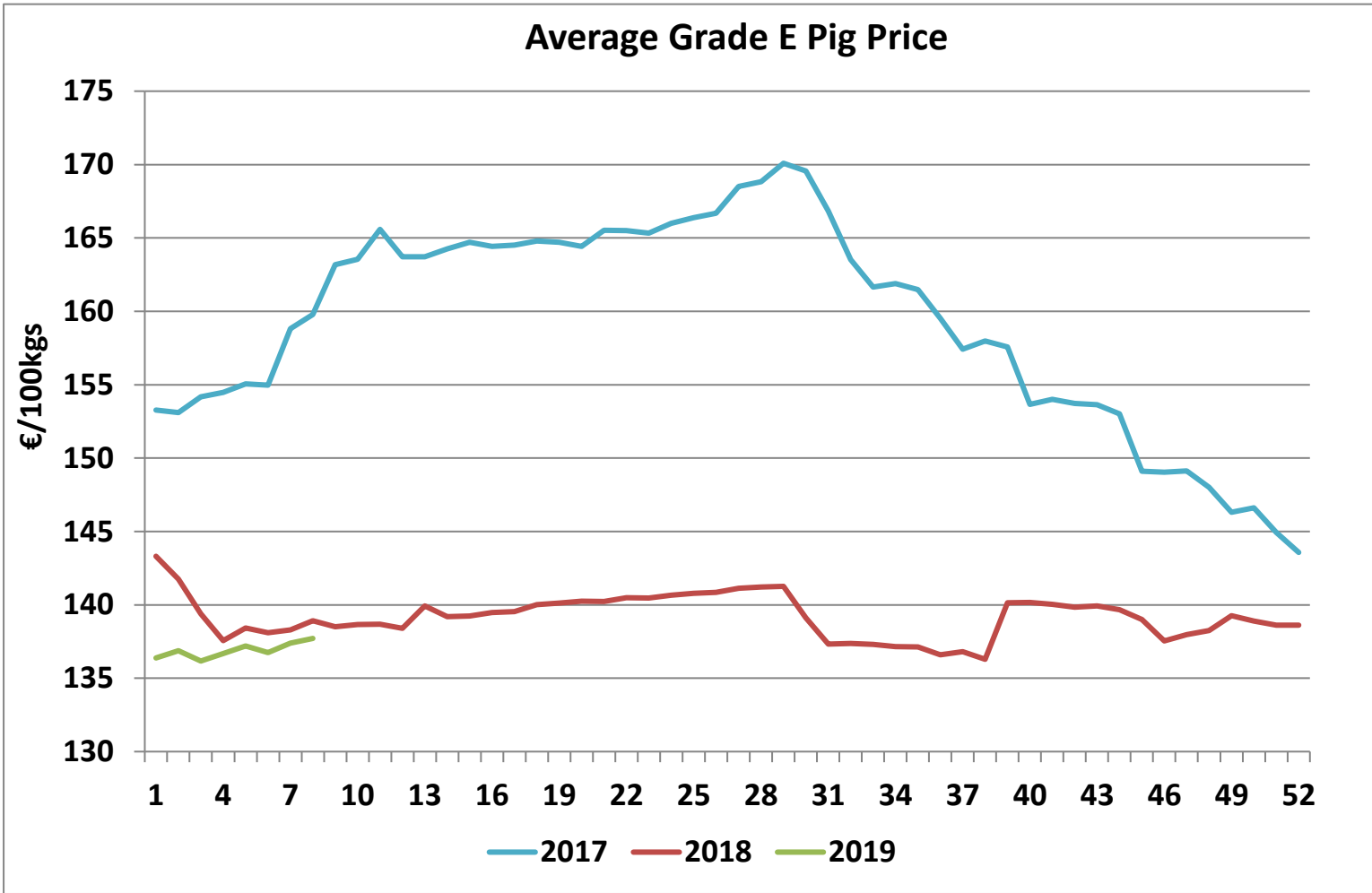
Cattle exported, w/c 11/02/19



Cumulative cattle export figures, 2019



Irish Average Grade E Pig Prices - €/100kgs						
Week	2019	Weekly %	% change	2018	2017	
1	136.39		-4.8%	143.31	153.27	
2	136.87	0.4%	-3.4%	141.76	153.10	
3	136.17	-0.5%	-2.3%	139.39	154.17	
4	136.68	0.4%	-0.6%	137.57	154.48	
5	137.19	0.4%	-0.9%	138.43	155.06	
6	136.75	-0.3%	-1.0%	138.10	154.96	
7	137.39	0.5%	-0.7%	138.30	158.82	
8	137.71	0.2%	-0.9%	138.92	159.79	
9		100.0%	-100.0%	138.51	163.19	
10		-	-100.0%	138.66	163.55	
11		-	-100.0%	138.69	165.58	
12		-	-100.0%	138.40	163.71	
13		-	-100.0%	139.93	163.72	
14		-	-100.0%	139.20	164.25	
15		-	-100.0%	139.23	164.71	
16		-	-100.0%	139.47	164.43	
17		-	-100.0%	139.54	164.52	
18		-	-100.0%	140.02	164.80	
19		-	-100.0%	140.12	164.71	
20		-	-100.0%	140.25	164.42	
21		-	-100.0%	140.22	165.52	
22		-	-100.0%	140.48	165.50	
23		-	-100.0%	140.47	165.33	
24		-	-100.0%	140.66	165.99	
25		-	-100.0%	140.79	166.39	
26		-	-100.0%	140.84	166.68	
27		-	-100.0%	141.14	168.50	
28		-	-100.0%	141.21	168.83	
29		-	-100.0%	141.26	170.09	
30		-	-100.0%	139.12	169.56	
31		-	-100.0%	137.33	166.84	
32		-	-100.0%	137.37	163.53	
33		-	-100.0%	137.30	161.65	
34		-	-100.0%	137.15	161.88	
35		-	-100.0%	137.13	161.49	
36		-	-100.0%	136.59	159.53	
37		-	-100.0%	136.80	157.41	
38		-	-100.0%	136.29	157.97	
39		-	-100.0%	140.14	157.57	
40		-	-100.0%	140.17	153.65	
41		-	-100.0%	140.04	154.00	
42		-	-100.0%	139.85	153.73	
43		-	-100.0%	139.93	153.64	
44		-	-100.0%	139.67	153.01	
45		-	-100.0%	139.00	149.10	
46		-	-100.0%	137.54	149.04	
47		-	-100.0%	137.96	149.13	
48		-	-100.0%	138.24	148.01	
49		-	-100.0%	139.25	146.30	
50		-	-100.0%	138.89	146.62	
51		-	-100.0%	138.62	144.94	
52		-	-100.0%	138.62	143.57	



Sheepmeat Information for week 8

18/02/2019 - 24/02/2019

Irish Prices €/100 kg	2019	2018	Change
Ave Factory Price	494.43	517.87	-4.5%
Ave Mart Price	441.23	417.48	5.7%
National Ave Price	478.47	487.75	-1.9%
YTD Ave	482.42	457.79	5.4%

Slaughterings	2019	2018	Change
Weekly	38,739	50,286	-23%
YTD	365,489	408,515	-11%

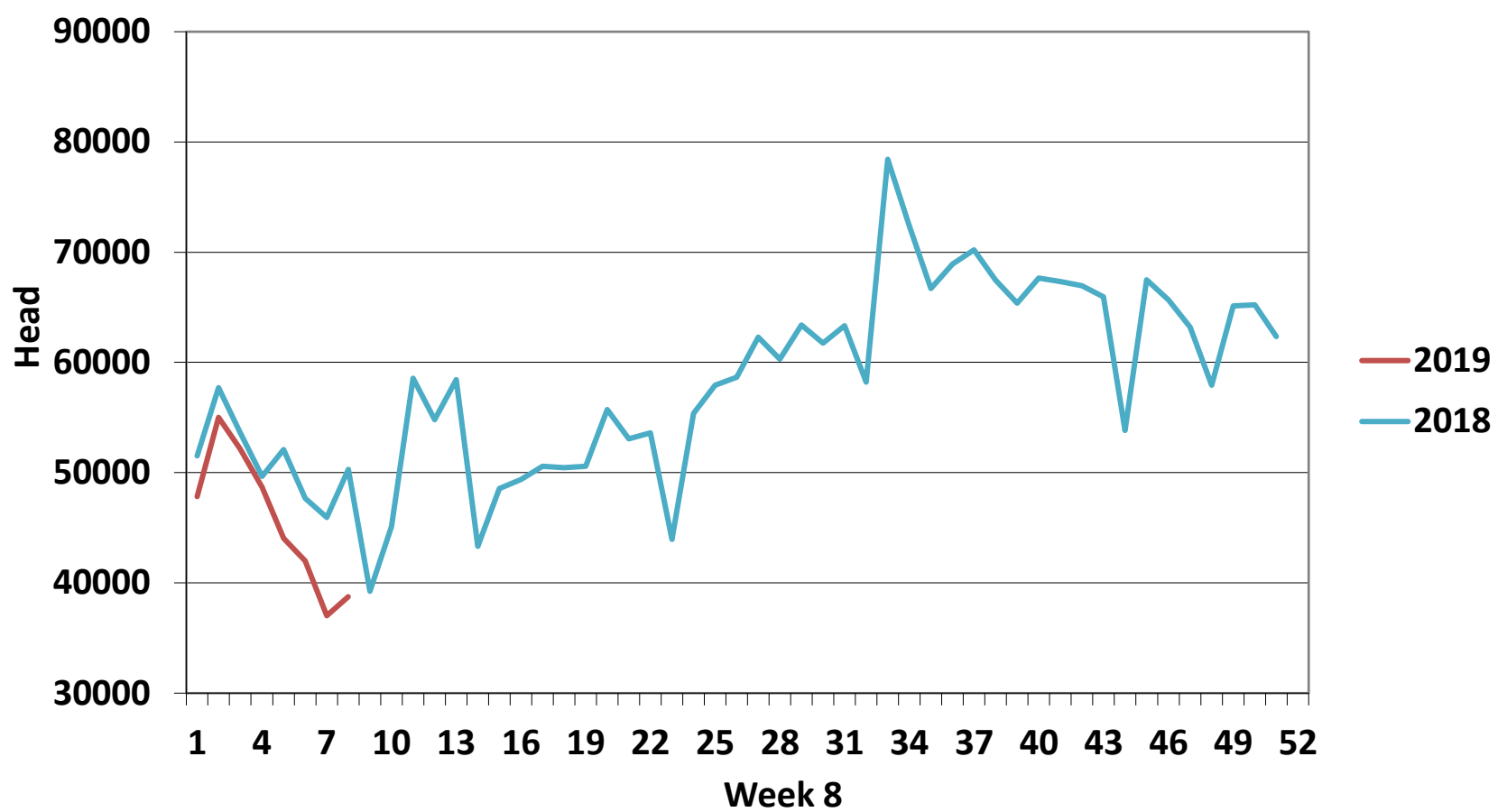
EU Market Rates Heavy Lambs	€/100kg	% of Commu Price
Belgium	489.5	99%
Denmark	458.5	93%
Germany	502.7	101%
Spain	507.9	102%
France	576.0	116%
Croatia	369.2	74%
Ireland	478.5	97%
Italy	519.0	105%
Cyprus	517.0	104%
Latvia	356.9	72%
Lithuania	331.0	67%
Netherlands	495.7	100%
Austria	595.0	120%
Poland	434.1	88%
Romania	260.1	52%
Finland	366.5	74%
Sweden	476.9	96%
Northern Ireland	468.4	95%
Great Britain	480.8	97%
United Kingdom	479.9	97%
Community	495.6	100%

REPORT ON SLAUGHTERING AT SHEEP EXPORT PREMISES

WEEK 08 18/02/2019 - 24/02/2019

CATEGORY	2019		2018		DIFFERENCE	
	Weekly	Cumulative	Weekly	Cumulative	Weekly	Cumulative
Lambs/Hoggets	32,579	288,069	42,292	343,380	-9713	55,311
Spring Lambs	-	12,825	-	-	0	12,825
Ewes and Rams	6,160	64,593	7,986	65,100	-1,826	507
Light Lambs	-	2	8	35	-8	33
TOTAL	38,739	365,489	50,286	408,515	-11,547	-43,026

Weekly Sheep Slaughtering



Ave. Price €/100 kg for Sheepmeat

