

Meat Market Report

25/02/19 - 03/03/19

Week

09



**An Roinn Talmhaíochta,
Bia agus Mara**
Department of Agriculture,
Food and the Marine

MARKET SUMMARY

Beef

Deadweight Prices c/100Kg (Including VAT)

	U3	U4	R3	R4	O3	O4	P+
Steers	395.4	393.3	386.5	387.0	368.8	372.8	345.6
Heifers	413.1	411.9	399.7	399.6	381.5	383.2	343.9
Young Bulls	369.8	366.3	357.6	354.8	340.7	342.8	322.7
Cows			309.5	310.3	280.7	282.6	270.5

Liveweight Prices

*Bull Calf Average Price	€123.8 per head (Excluding VAT)
**Young Store Average Price	€217.0 per 100kg (Excluding VAT)
***Yearling (male & female) Price	€193.0 per 100kg (Excluding VAT)

* Aged 8-28 days ** Aged 180-364 days, Male & Female ***age 365-730 days

Slaughterings

35,267 cattle slaughtered this week, of which steers were 11,364 (32%), heifers 10,670 (30%), young bulls 5,449 (15%) and cows 7,112 (20%). Total YTD slaughter is 322,134 compared to 293,214 in 2018, a 10% increase.

Live Trade

11,629 cattle were exported in the week commencing 18/02/2019 11,001 to EU (Except NI). Live exports for 2019 amount to 32,150 compared to 22,266 in 2018, up 44% on 2018 levels.

*This data is provisional and subject to revision.

The next meeting of the Management Committee for the Common Organisation of Agricultural Markets (Animal Products Sector) is 21 February 2019

CONTENTS:

Page 2: Market Summary Beef

Page 3: Market Summary Other Meats

Page 4: Beef Price and Slaughter Summary

Page 5: Comparative Beef Prices

Page 6: Steer and Young Bull Price

Page 7: Heifer and Cow Graphs

Page 8: Price and Slaughter Graphs

Page 9: Liveweight Beef Graphs

Page 10: Beef Export Maps

Page 11: Beef Export Info

Page 12: Market Access Update

Page 13: Pig Price Graph

Page 14: Pig Slaughtering

Page 15: Sheep Prices

Page 16: Sheep Slaughterings

Page 17: Poultry Slaughtering

MARKET SUMMARY

Pigmeat

Grade E Pig
Prices (Ex.
VAT)

The Grade E Pig price for week commencing 25/02/2019 was €137.55 per 100Kg. in comparison to €138.51 in the same week last year, which represents a 0.7% decrease.

[Further details available on page 13](#)

Slaughtering

68,820 pigs were slaughtered in week 9 of which 1,889 were sows. The cumulative figure for pig slaughterings in 2019 is 610,107 which is up 6% against the same point last year.

[Further details available on page 14](#)

Sheepmeat

Sheepmeat
Prices (Ex.
VAT)

The national average price for the week commencing 25/02/2019 was €480.2 per 100Kg, a decrease of 0.5% over the same week last year.

[Further details available on page 15](#)

Slaughtering

38,786 sheep were slaughtered at sheep export premises the week commencing 25/02/2019, compared to 39,244 in the same week of 2018. Sheep slaughterings for 2019 are 10% down on 2018 at 404,275 head.

Live Trade

Total live exports to European Countries stood at 20,769 head to the end of 2018.

Poultry

Slaughtering

Cumulative poultry slaughterings for 2019* stand at 18,349,703 birds at the end of week 9, up 13% compared to the same period last year.

[Further details available on page 17](#)

*Latest Figures are provisional and subject to change

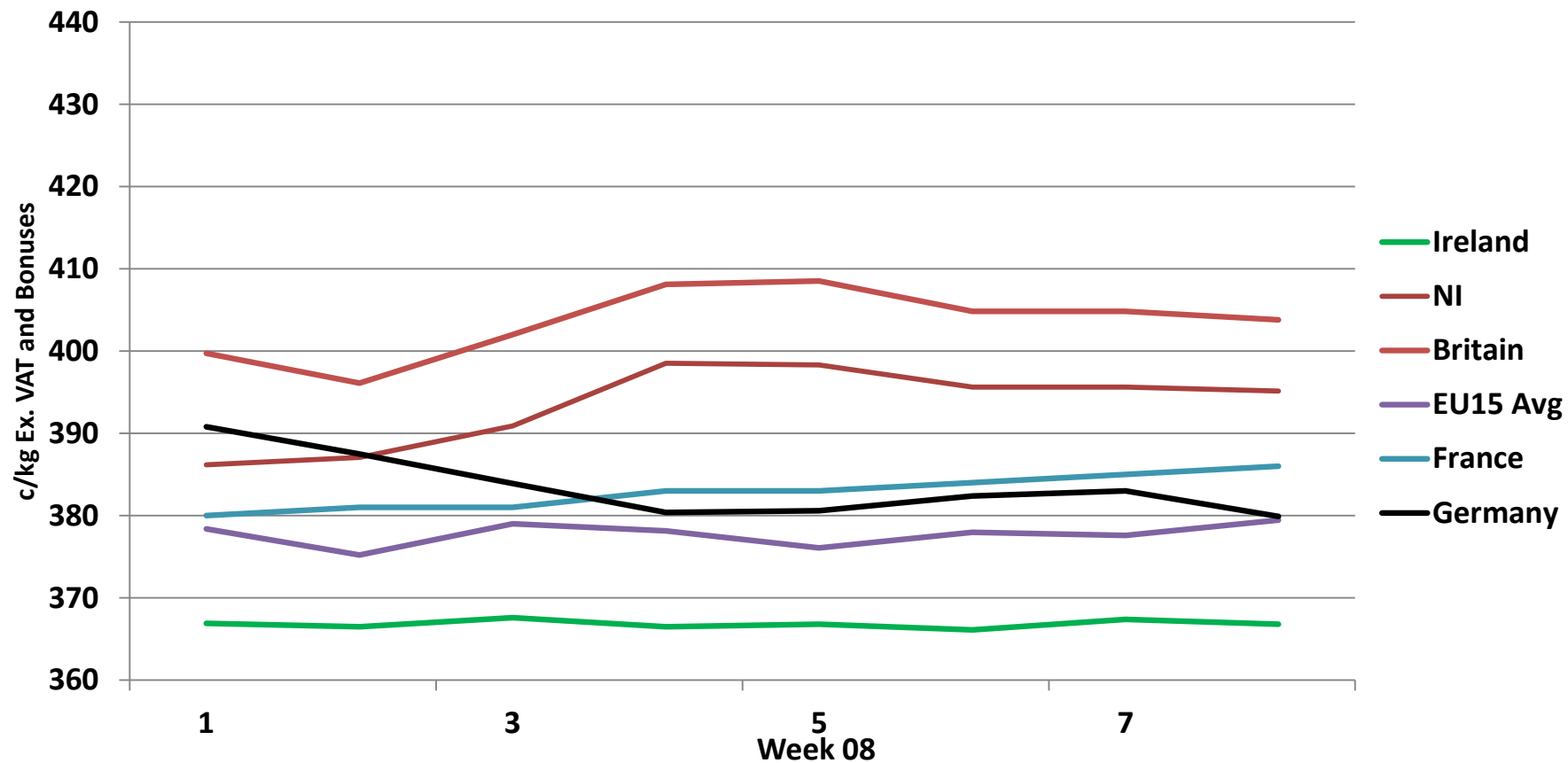
Dead Weight Prices	W/C	W/C	Same week 2018	% change prev week	% change 2018
	25/02/19	18/02/19	26/02/18		
Steers (R3) (c/kg)	366.7	366.8	387.6	0.0%	-5.4%
Heifers (R3) (c/kg)	379.3	379.3	399.1	0.0%	-5.0%
Young Bulls (U3) (c/kg)	350.8	351.6	390.1	-0.2%	-10.1%
Cows (04) (c/kg)	268.1	267.5	326.4	0.3%	-17.8%

Live Weight Prices	W/C	W/C	Same week 2017	% change previous week	% change 2018
	25/02/19	18/02/19	26/02/18		
Yearlings (Male) (Aged 365 - 730 days) - (€/100Kg)	191	188	204	1.6%	-6.4%
Yearlings (Female) (Aged 365 - 730 days) - (€/100Kg)	195	198	214	-1.5%	-8.9%
Young Stores (Male & Female) (Aged 180 - 364 days) - (€/100Kg)	217	213	240	1.9%	-9.6%
Bull Calf (€/head) Dairy	77.7	76.0	101.4	2.3%	-23.4%
Bull Calf (€/head) Beef	169.9	183.3	215.1	-7.3%	-21.0%
Bull Calf (€/head) Average	123.8	129.6	158.3	-4.5%	-21.8%

Slaughter Figures	% of weekly figures	W/C	Same week 2018	Year to Date		Change 2019 v 2018	
		25-Feb-19		2019	2018	Head	%
Steers	32.2%	11,364	8,844	99,621	95,693	3,928	4.1%
Cows	20.2%	7,112	4,668	65,412	58,620	6,792	11.6%
Heifers	30.3%	10,670	7,331	98,808	87,372	11,436	13.1%
Young Bulls	15.5%	5,449	3,533	54,131	47,381	6,750	14.2%
Mature Bulls	1.9%	672	358	4,162	4,148	14	0.3%
Total	100%	35,267	24,734	322,134	293,214	28,920	9.9%

Live Exports	W/C	Same week	W/C	Year to Date		Change 2019 v 2018	
	18-Feb-19	2018	11-Feb-19	2019	2018	Head	%
Northern Ireland	454	213	675	4,530	1,957	2,573	131%
EU Except NI	11,001	8,109	6,779	27,417	17,490	9,927	57%
Third Countries	174	923	0	203	2,819	-2,616	-
Total	11,629	9,245	7,454	32,150	22,266	9,884	44%

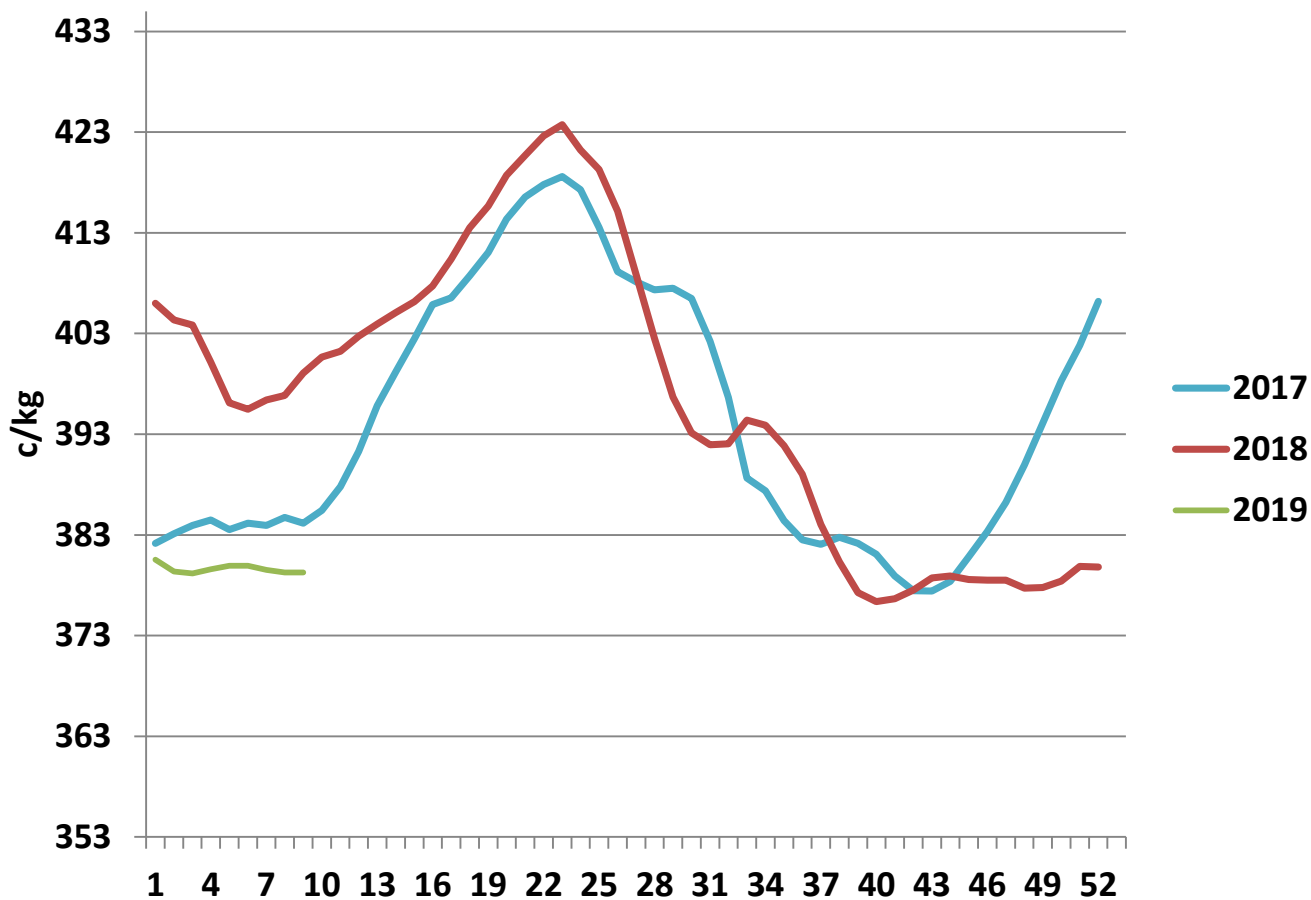
Irish Deadweight Cattle Prices vs Selected Other Markets, 2019



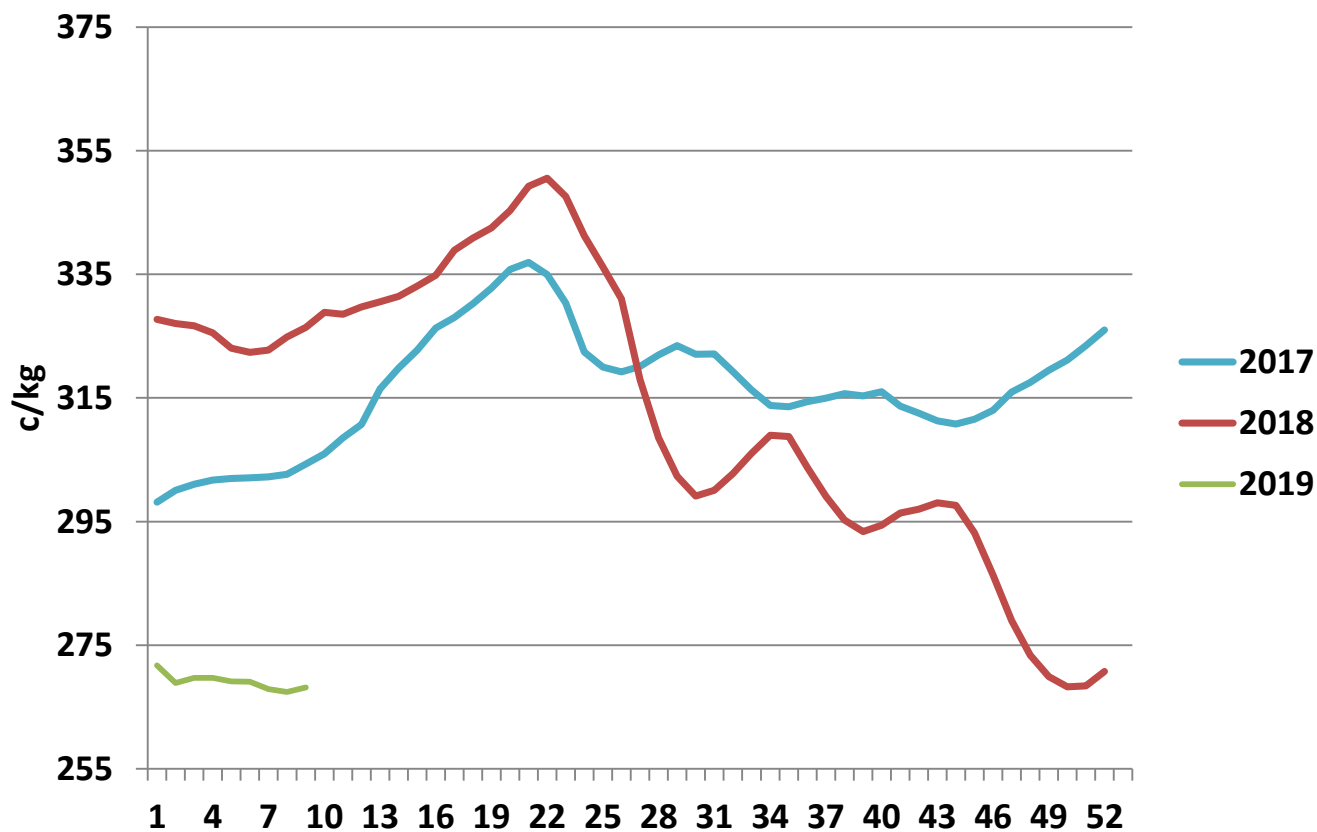
Livestock Pricing

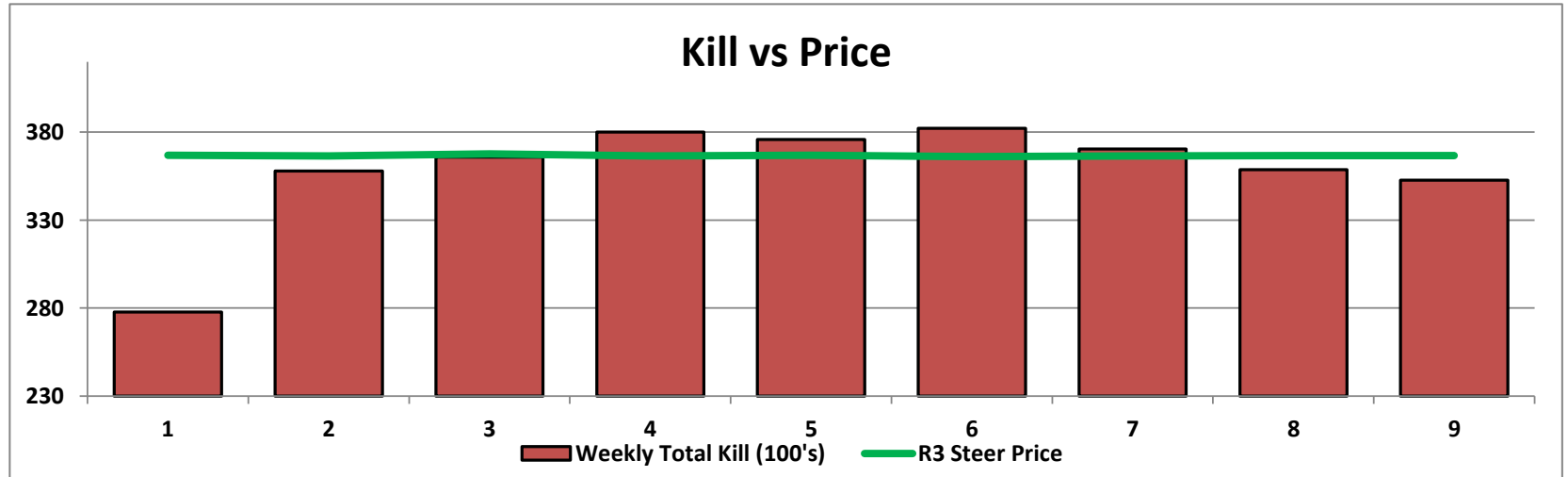
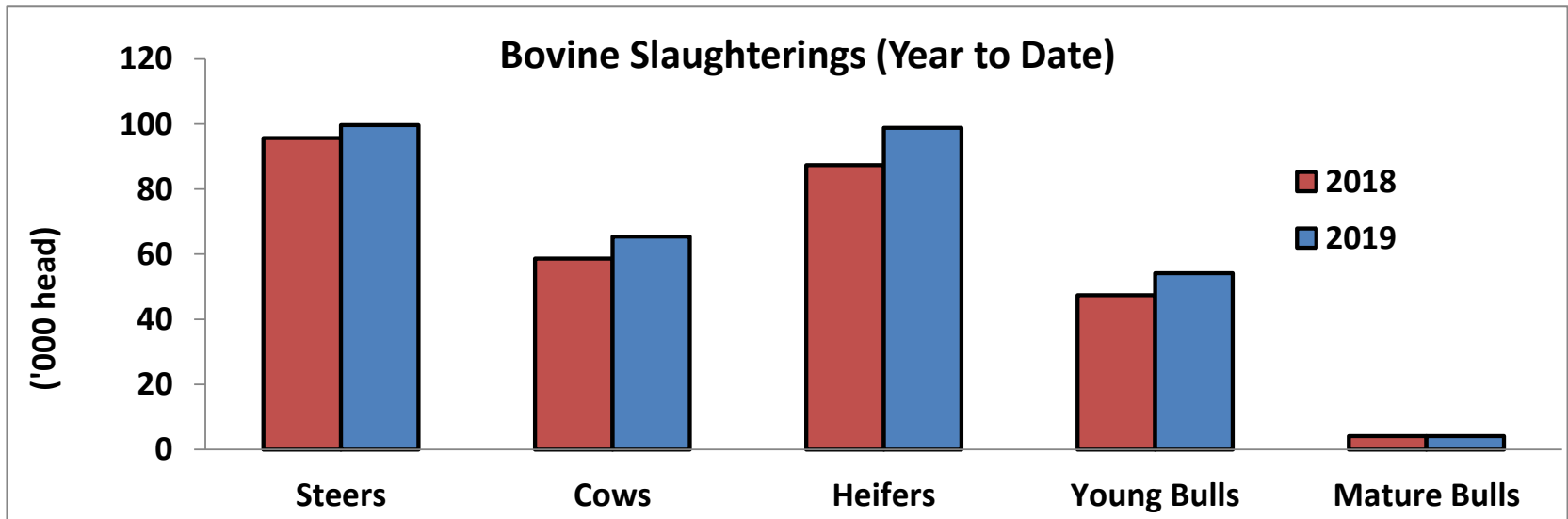
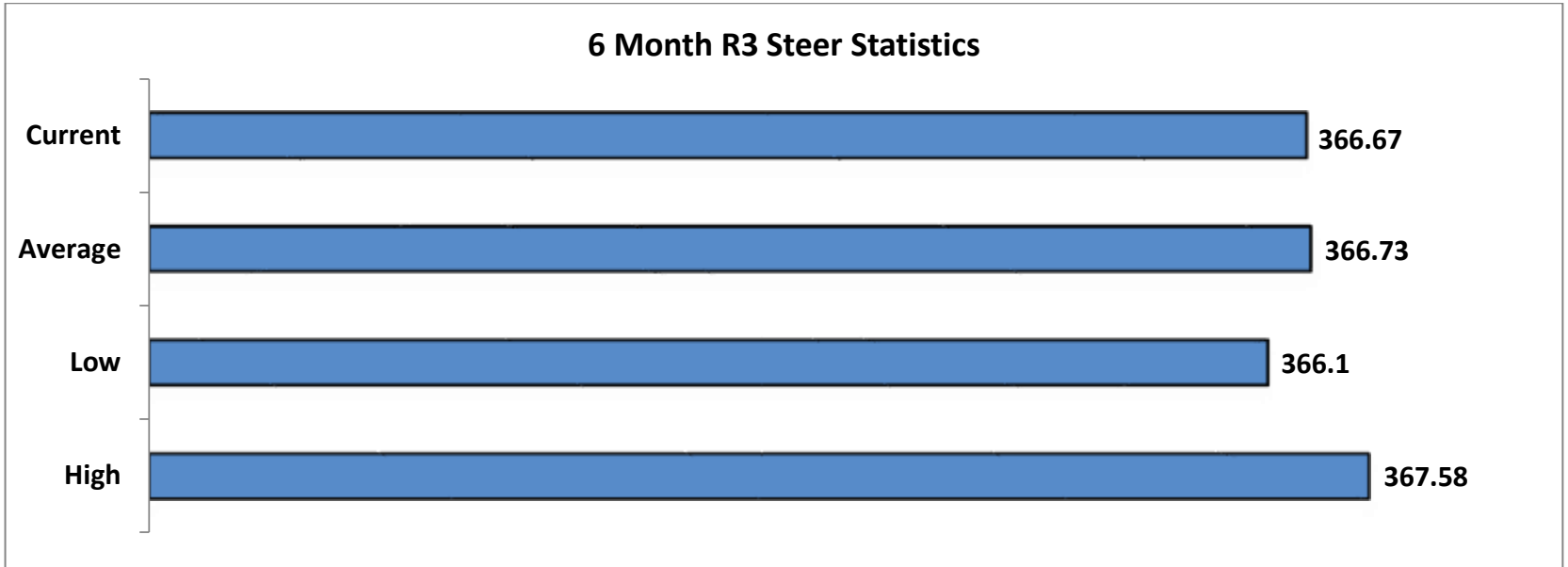
	Ireland	NI	Britain	EU 15 Average	France	Germany
W/C 18/02/19	366.8	395.14	403.8	379.45	386	379.9

R3 Heifer prices ex. VAT

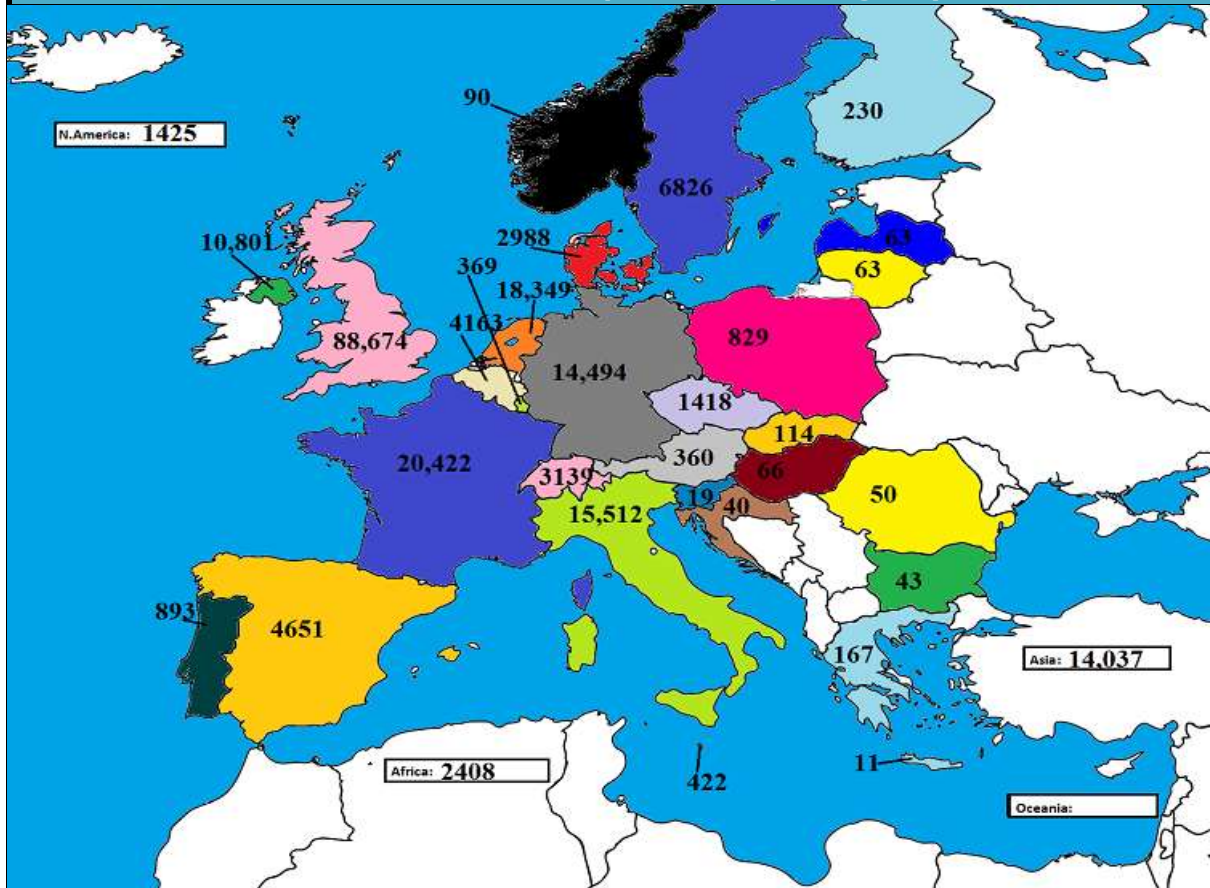


O4 Cow prices ex. VAT

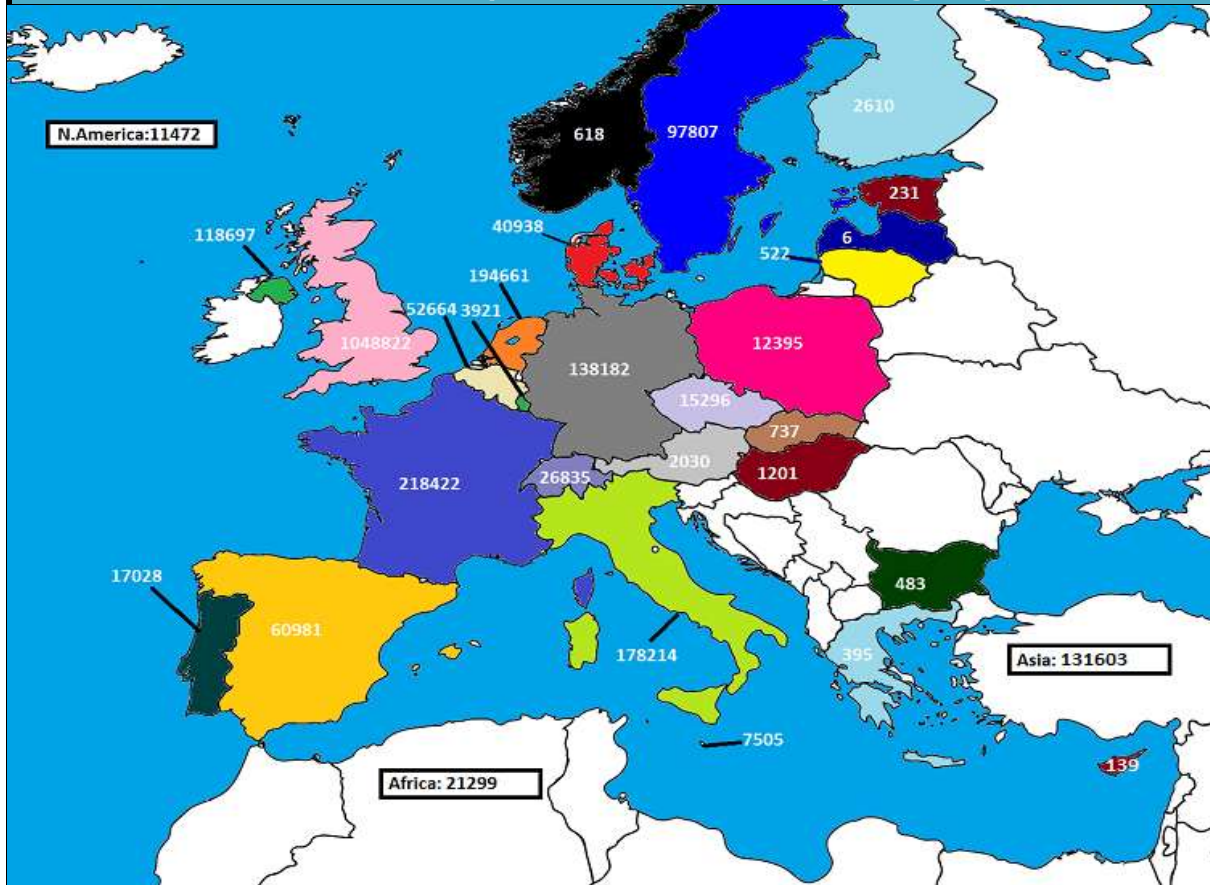




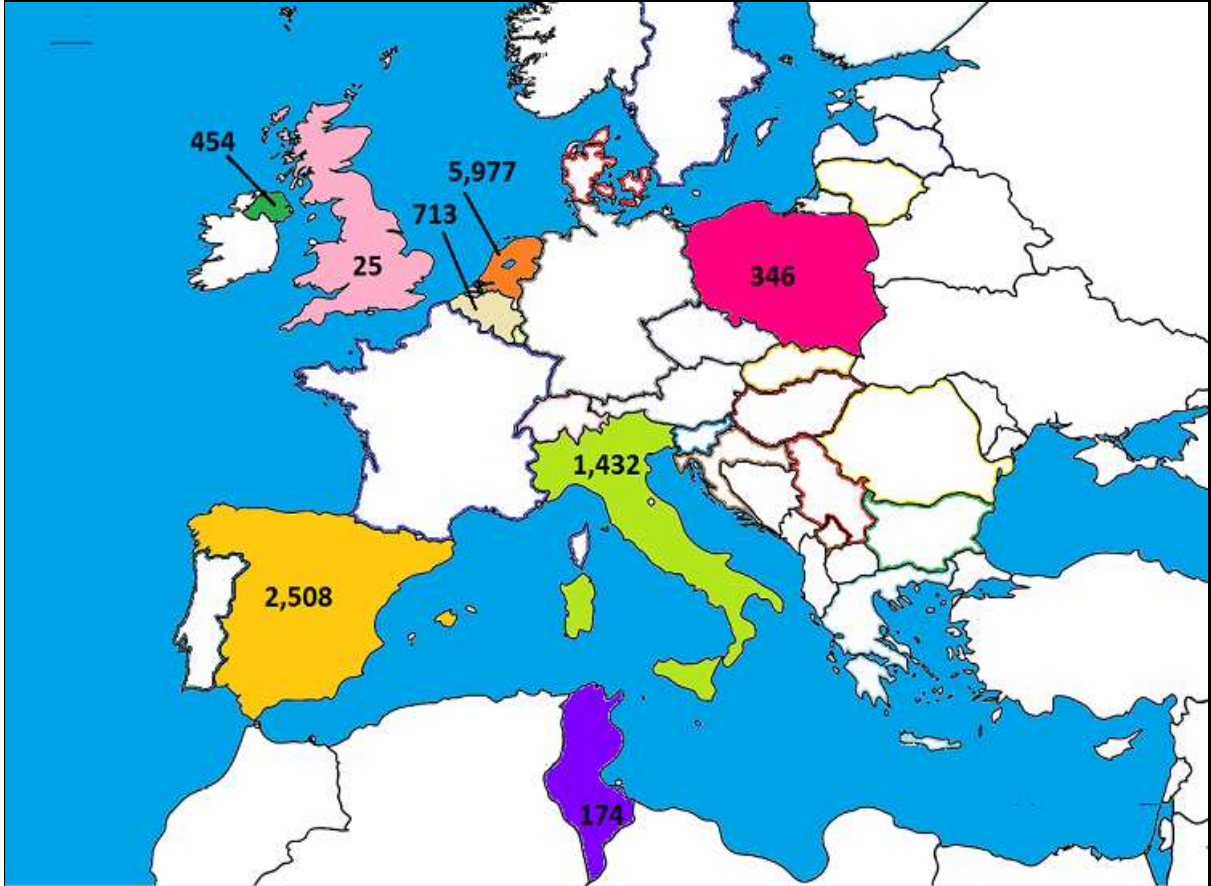
November 2018 Beef exports, €000 (CSO figures)



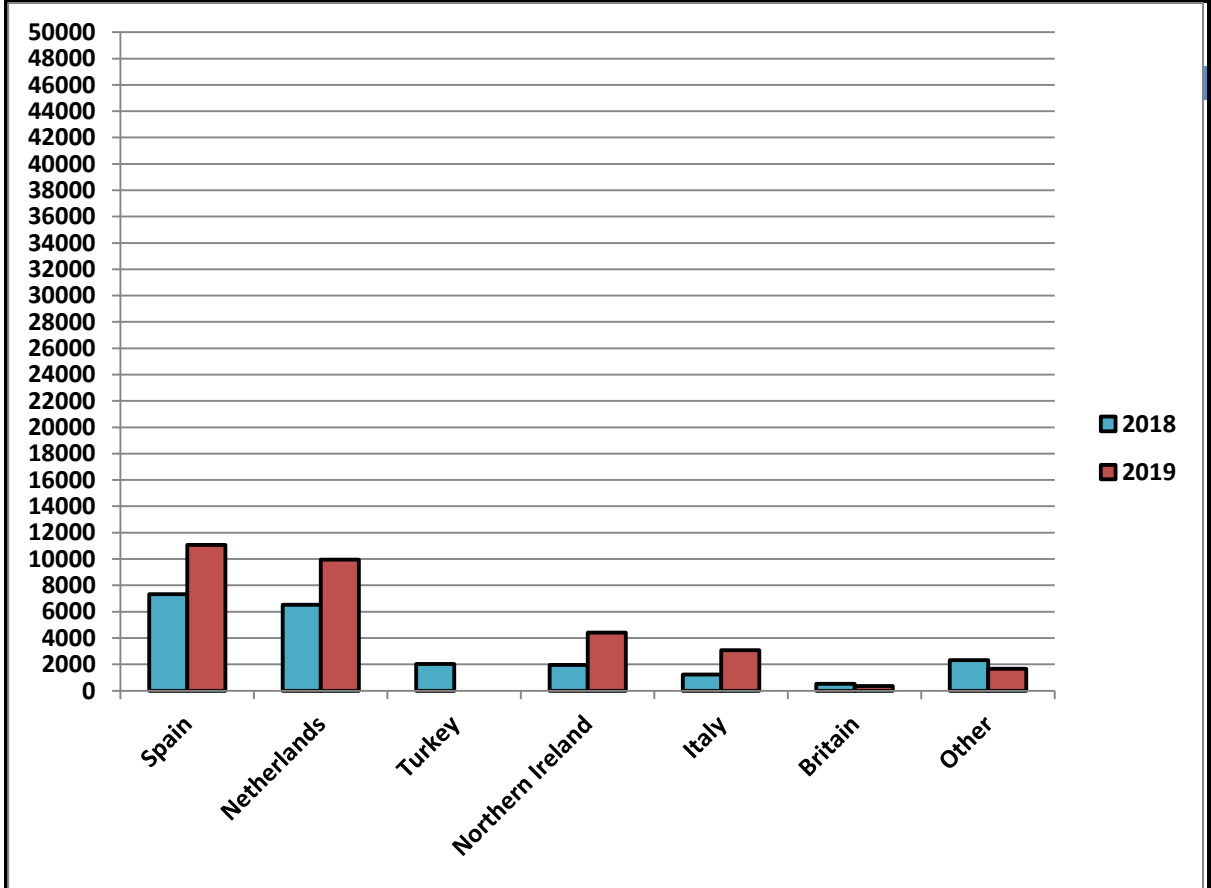
Cumulative beef exports to Dec 2017, €000 (CSO figures)

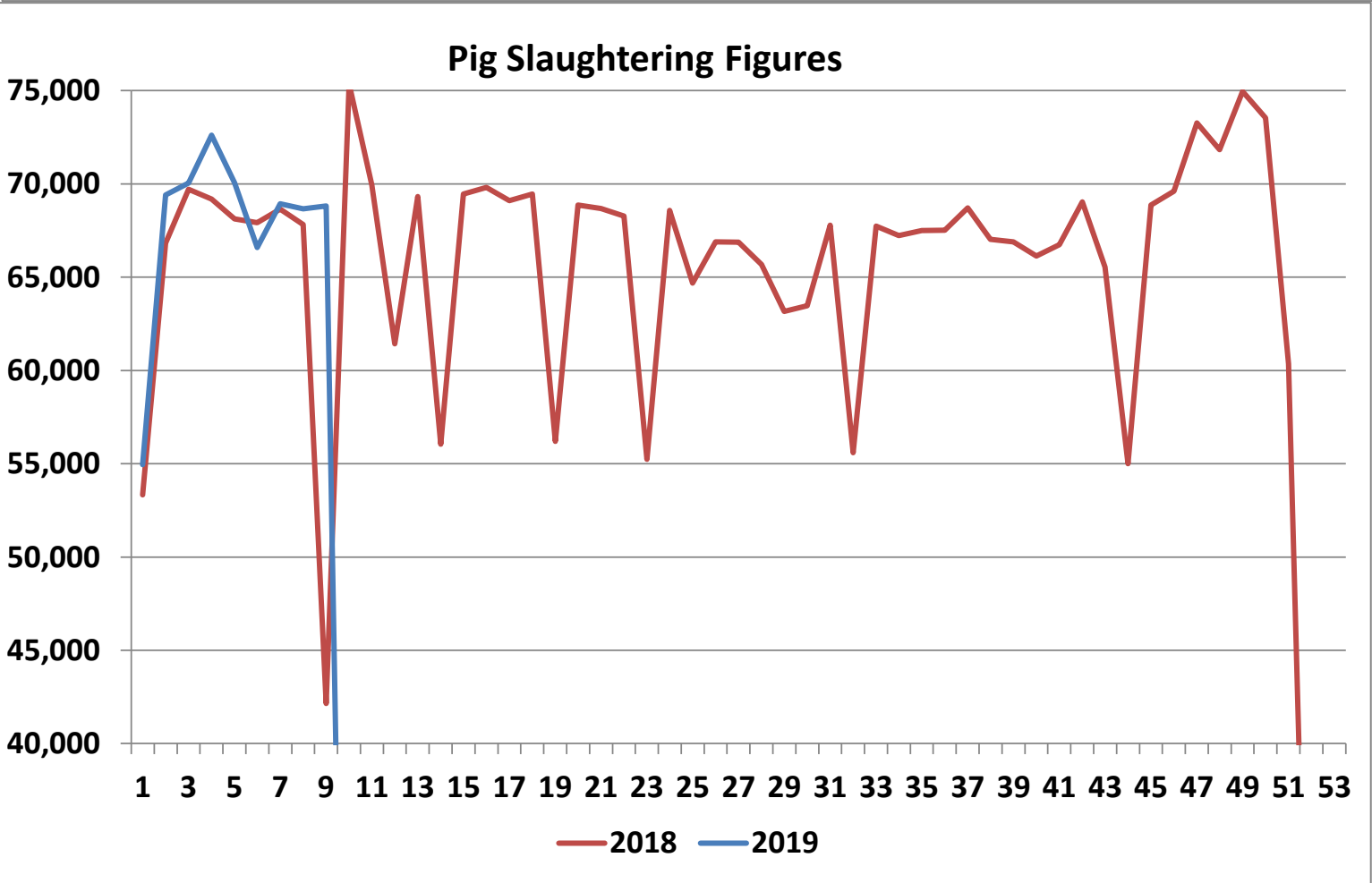
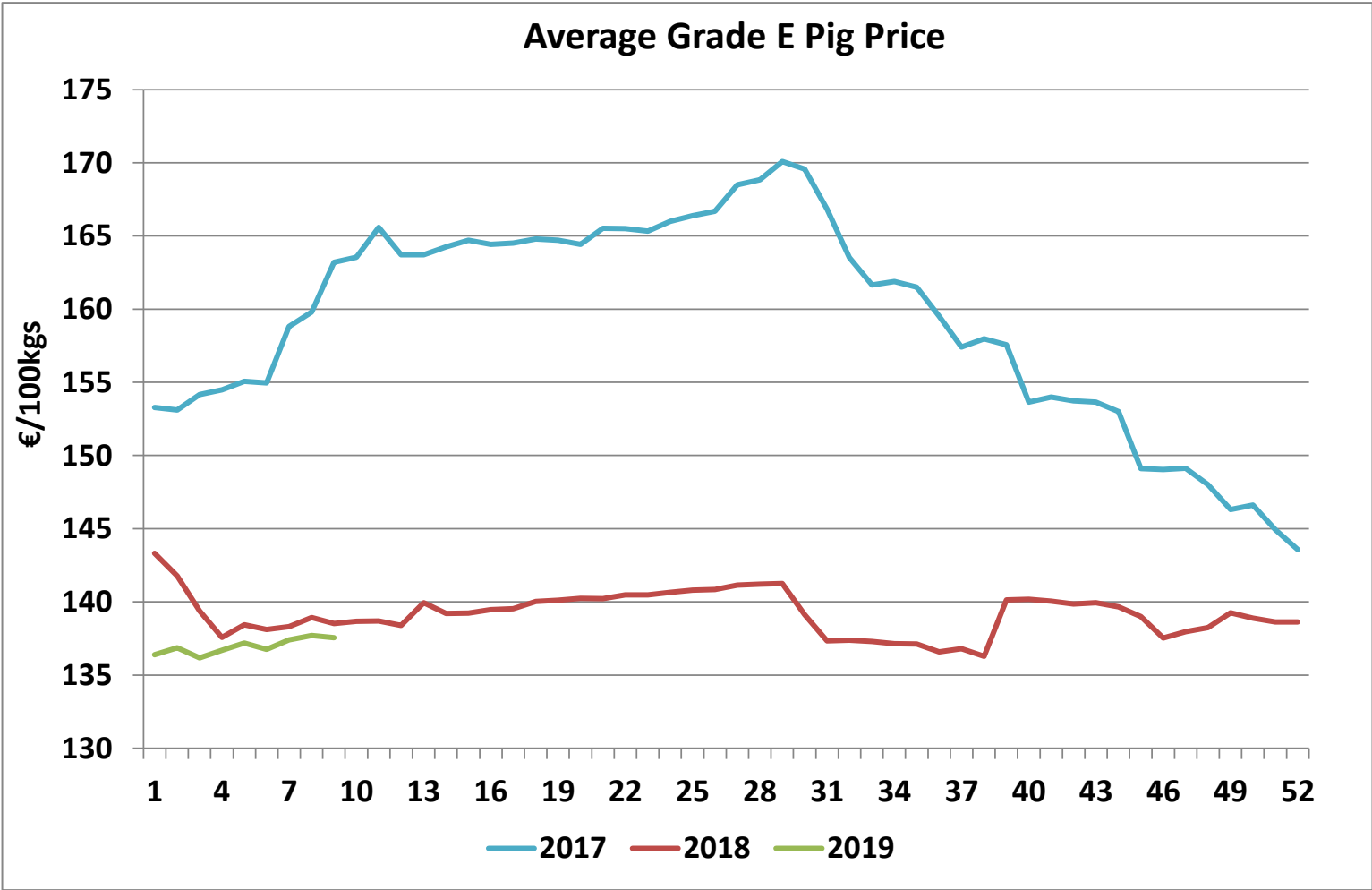


Cattle exported, w/c 18/02/19



Cumulative cattle export figures, 2019





Sheepmeat Information for week 9

25/02/2019 - 03/03/2019

Irish Prices €/100 kg	2019	2018	Change
Ave Factory Price	494.37	521.69	-5.2%
Ave Mart Price	447.13	390.72	14.4%
National Ave Price	480.2	482.4	-0.5%
YTD Ave	482.17	460.52	4.7%

Slaughterings	2019	2018	Change
Weekly	38,786	39,244	-1%
YTD	404,275	447,759	-10%

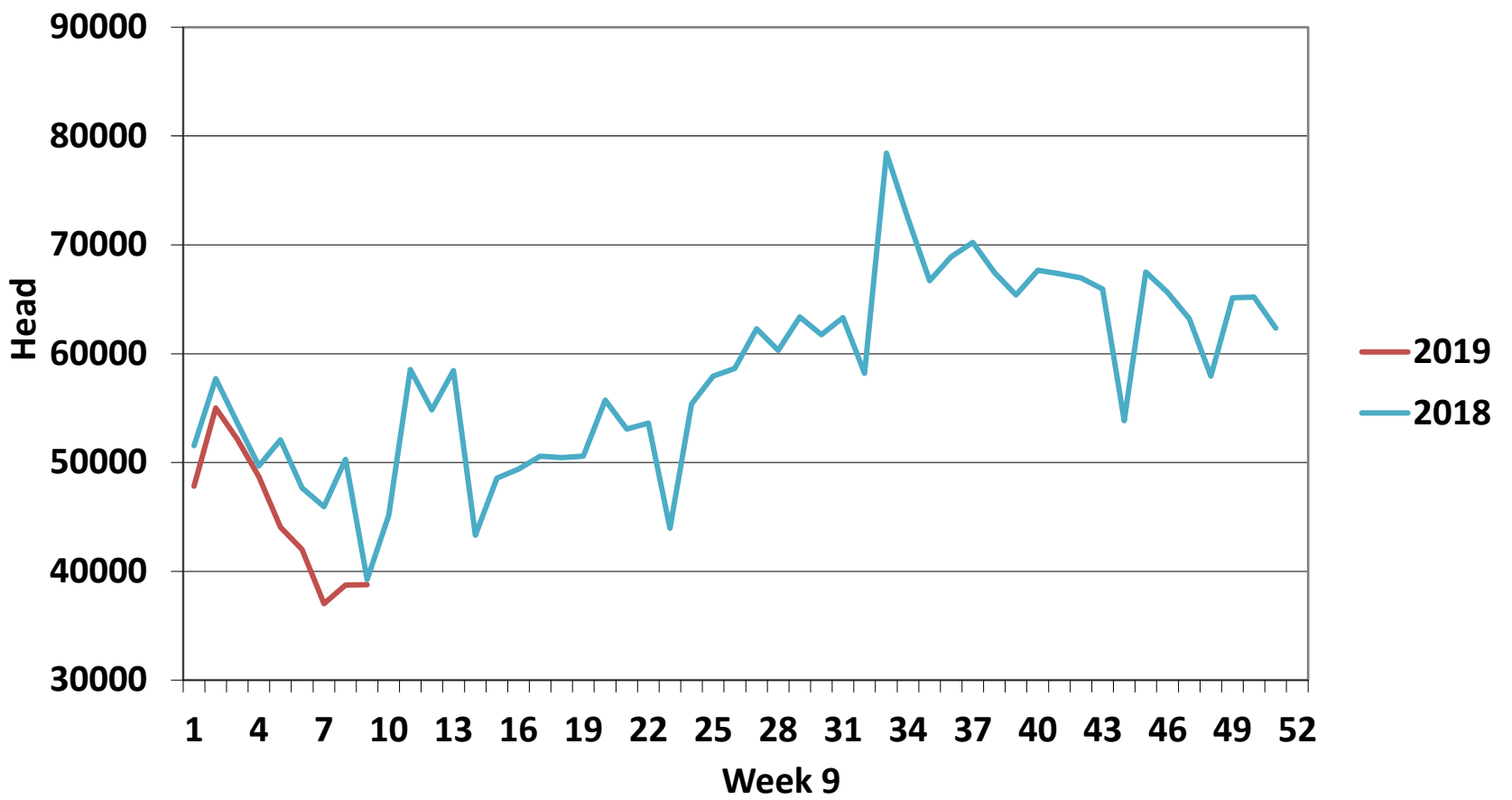
EU Market Rates Heavy Lambs	€/100kg	% of Community Price
Belgium	495.7	99%
Denmark	458.5	92%
Germany	519.9	104%
Spain	507.9	102%
France	588.0	118%
Croatia	413.3	83%
Ireland	480.2	96%
Italy	519.0	104%
Cyprus	515.0	103%
Latvia	381.2	76%
Lithuania	458.1	92%
Netherlands	500.3	100%
Austria	571.0	114%
Poland	434.1	87%
Romania	272.8	55%
Finland	366.5	73%
Sweden	489.1	98%
Northern Ireland	474.3	95%
Great Britain	482.0	96%
United Kingdom	481.5	96%
Community	499.7	100%

REPORT ON SLAUGHTERING AT SHEEP EXPORT PREMISES

WEEK 09 25/02/2019 - 03/03/2019

CATEGORY	2019		2018		DIFFERENCE	
	Weekly	Cumulative	Weekly	Cumulative	Weekly	Cumulative
Lambs/Hoggets	32,284	320,353	33,562	376,942	-1278	56,589
Spring Lambs	-	12,825	-	-	0	12,825
Ewes and Rams	6,502	71,095	5,679	70,779	823	316
Light Lambs	-	2	3	38	-3	36
TOTAL	38,786	404,275	39,244	447,759	-458	-43,484

Weekly Sheep Slaughtering



Ave. Price €/100 kg for Sheepmeat

