

Meat Market Report

11/03/19 - 17/03/19

Week

11



**An Roinn Talmhaíochta,
Bia agus Mara**

Department of Agriculture,
Food and the Marine

MARKET SUMMARY

Beef

Deadweight Prices c/100Kg (Including VAT)

	U3	U4	R3	R4	O3	O4	P+
Steers	394.2	392.0	386.1	387.2	368.5	373.0	345.5
Heifers	414.4	414.8	400.8	400.3	380.8	382.4	345.7
Young Bulls	366.9	363.5	357.1	353.9	339.4	341.5	325.2
Cows			307.6	307.9	282.4	283.1	271.6

Liveweight Prices

*Bull Calf Average Price	€113.2 per head (Excluding VAT)
**Young Store Average Price	€215.0 per 100kg (Excluding VAT)
***Yearling (male & female) Price	€192.5 per 100kg (Excluding VAT)

* Aged 8-28 days ** Aged 180-364 days, Male & Female ***age 365-730 days

Slaughterings

34,154 cattle slaughtered this week, of which steers were 11,552 (34%), heifers 10,247 (30%), young bulls 4,997 (15%) and cows 6,724 (20%). Total YTD slaughter is 391,634 compared to 363,137 in 2018, a 8% increase.

Live Trade

15,796 cattle were exported in the week commencing 04/03/2019 15,320 to EU (Except NI). Live exports for 2019 amount to 58,332 compared to 43,276 in 2018, up 35% on 2018 levels.

*This data is provisional and subject to revision.

The next meeting of the Management Committee for the Common Organisation of Agricultural Markets (Animal Products Sector) is 21st March 2019

CONTENTS:

Page 2: Market Summary Beef
 Page 3: Market Summary Other Meats
 Page 4: Beef Price and Slaughter Summary
 Page 5: Comparative Beef Prices
 Page 6: Steer and Young Bull Price
 Page 7: Heifer and Cow Graphs
 Page 8: Price and Slaughter Graphs
 Page 9: Liveweight Beef Graphs

Page 10: Beef Export Maps
 Page 11: Beef Export Info
 Page 12: Pig price and slaughter graphs
 Page 13: Sheep prices and slaughter
 Page 15: Sheep price and slaughter graphs

MARKET SUMMARY

Pigmeat

Grade E Pig
Prices (Ex.
VAT)

The Grade E Pig price for week commencing 11/03/2019 was €140.96 per 100Kg. in comparison to €138.69 in the same week last year, which represents a 1.6% increase.

Slaughtering

69,038 pigs were slaughtered in week 11 of which 1,749 were sows. The cumulative figure for pig slaughterings in 2019 is 746,986 which is up 4% against the same point last year.

Sheepmeat

Sheepmeat
Prices (Ex.
VAT)

The national average price for the week commencing 11/03/2019 was €467.26 per 100Kg, a decrease of 11.4% over the same week last year.

Slaughtering

38,102 sheep were slaughtered at sheep export premises the week commencing 11/03/2019, compared to 58,561 in the same week of 2018. Sheep slaughterings for 2019 are 13% down on 2018 at 480,003 head.

Live Trade

Total live exports to European Countries stood at 20,769 head to the end of 2018.

Poultry

Slaughtering

Cumulative poultry slaughterings for 2019* stand at 20,348,551 birds at the end of week 10, up 10% compared to the same period last year.

*Latest Figures are provisional and subject to change

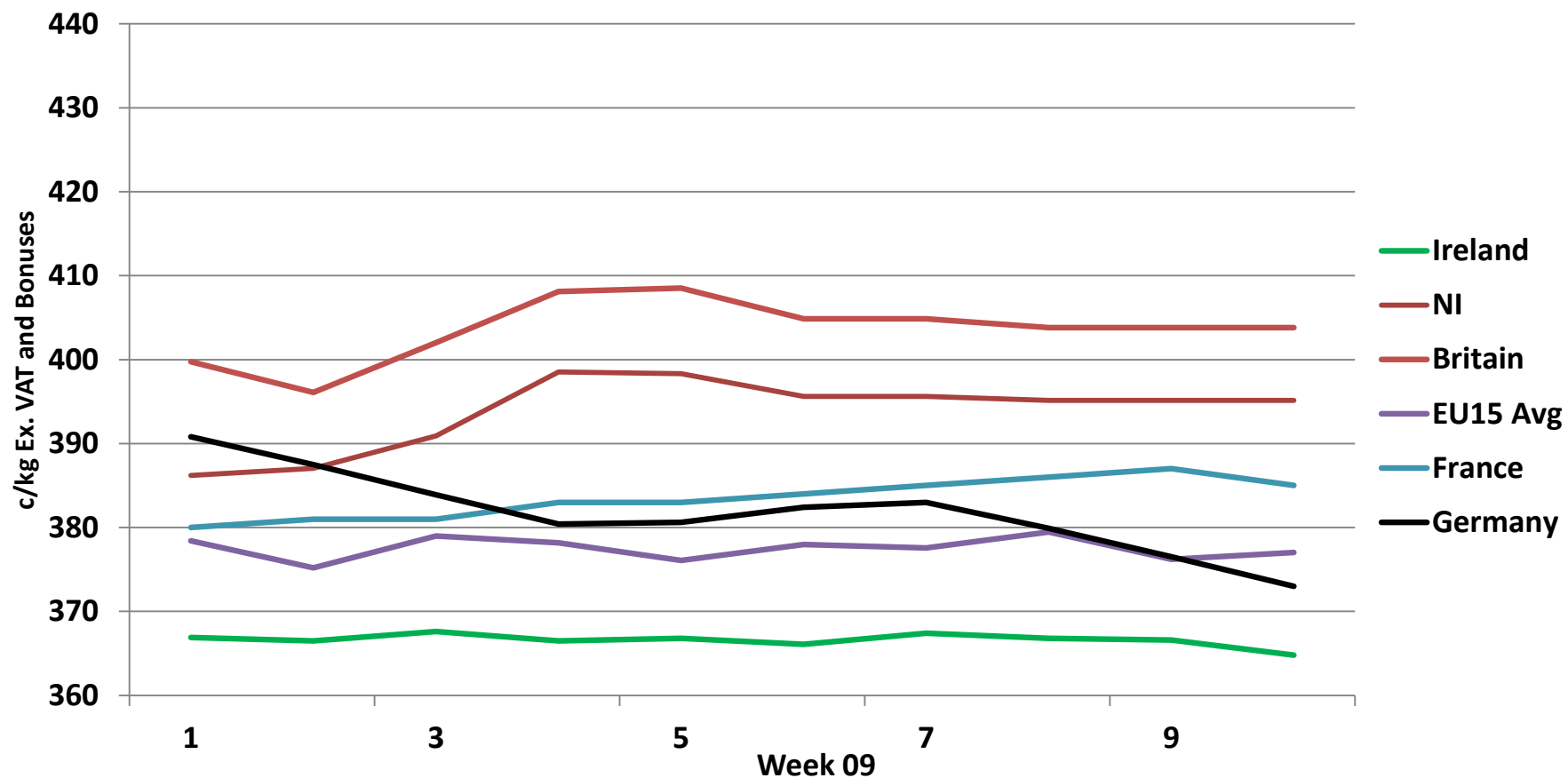
Dead Weight Prices	W/C	W/C	Same week 2018	% change prev week	% change 2018
	11/03/19	04/03/19	12/03/18		
Steers (R3) (c/kg)	366.3	364.8	388.7	0.4%	-5.8%
Heifers (R3) (c/kg)	380.3	379.3	401.2	0.3%	-5.2%
Young Bulls (U3) (c/kg)	348.1	349.1	391.8	-0.3%	-11.1%
Cows (04) (c/kg)	268.6	268.6	328.5	0.0%	-18.2%

Live Weight Prices	W/C	W/C	Same week 2017	% change previous week	% change 2018
	11/03/19	04/03/19	12/03/18		
Yearlings (Male) (Aged 365 - 730 days) - (€/100Kg)	186	193	209	-3.6%	-11.0%
Yearlings (Female) (Aged 365 - 730 days) - (€/100Kg)	199	198	213	0.5%	-6.6%
Young Stores (Male & Female) (Aged 180 - 364 days) - (€/100Kg)	215	220	240	-2.3%	-10.4%
Bull Calf (€/head) Dairy	64.5	67.1	112.0	-3.9%	-42.4%
Bull Calf (€/head) Beef	161.8	176.2	198.5	-8.1%	-18.5%
Bull Calf (€/head) Average	113.2	121.7	155.3	-7.0%	-27.1%

Slaughter Figures	% of weekly figures	W/C	Same week 2018	Year to Date		Change 2019 v 2018	
		11-Mar-19		2019	2018	Head	%
Steers	33.8%	11,552	11,949	123,273	120,972	2,301	1.9%
Cows	19.7%	6,724	7,454	78,975	73,102	5,873	8.0%
Heifers	30.0%	10,247	10,231	119,798	107,250	12,548	11.7%
Young Bulls	14.6%	4,997	3,797	64,143	56,144	7,999	14.2%
Mature Bulls	1.9%	634	636	5,445	5,669	-224	-4.0%
Total	100%	34,154	34,067	391,634	363,137	28,497	7.8%

Live Exports	W/C	Same week	W/C	Year to Date		Change 2019 v 2018	
	4-Mar-19	2018	25-Feb-19	2019	2018	Head	%
Northern Ireland	476	557	420	5,426	2,794	2,632	94%
EU Except NI	15,320	11,735	9,966	52,703	35,990	16,713	46%
Third Countries	0	1,673	0	203	4,492	-4,289	-
Total	15,796	13,965	10,386	58,332	43,276	15,056	35%

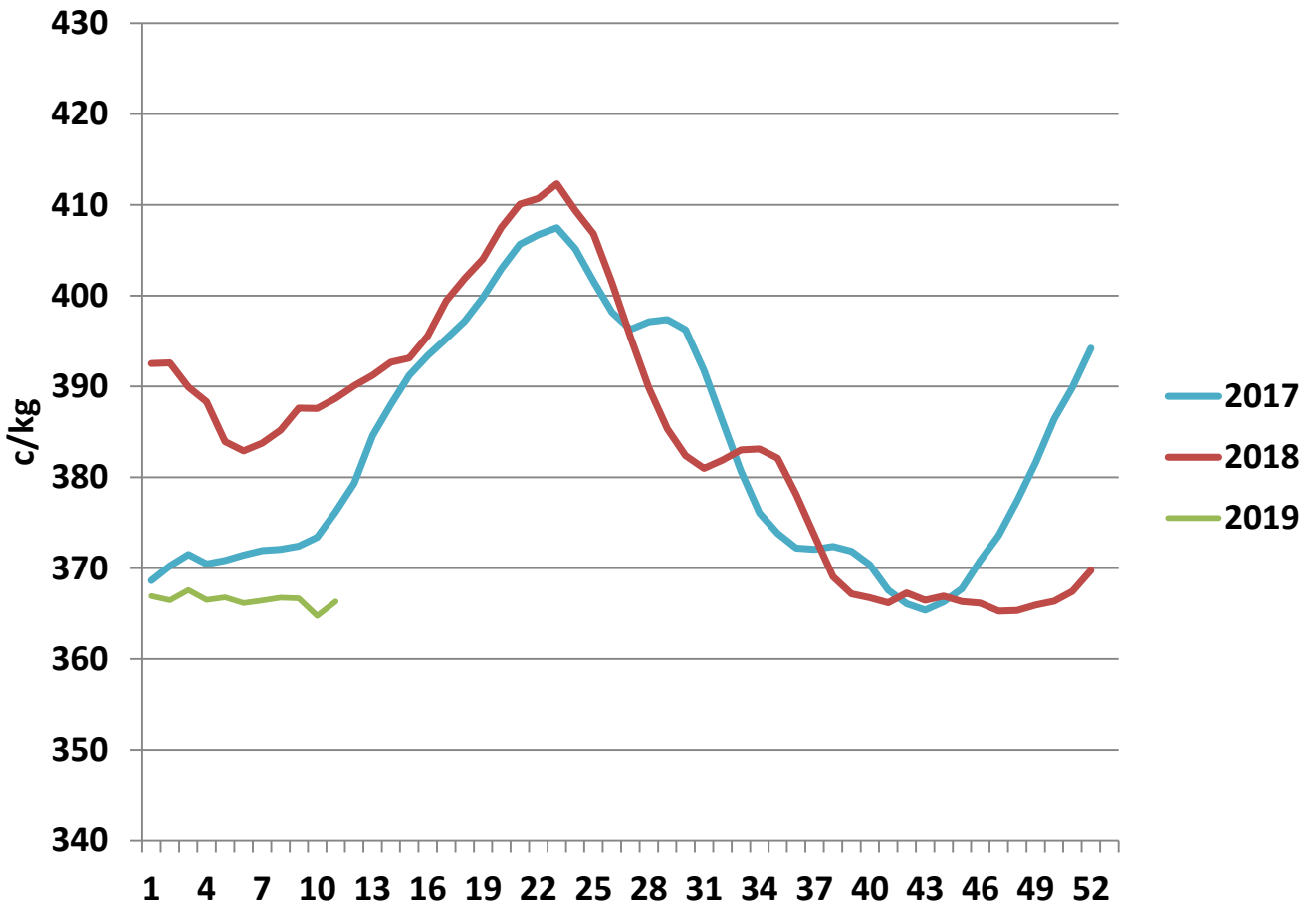
Irish Deadweight Cattle Prices vs Selected Other Markets, 2019



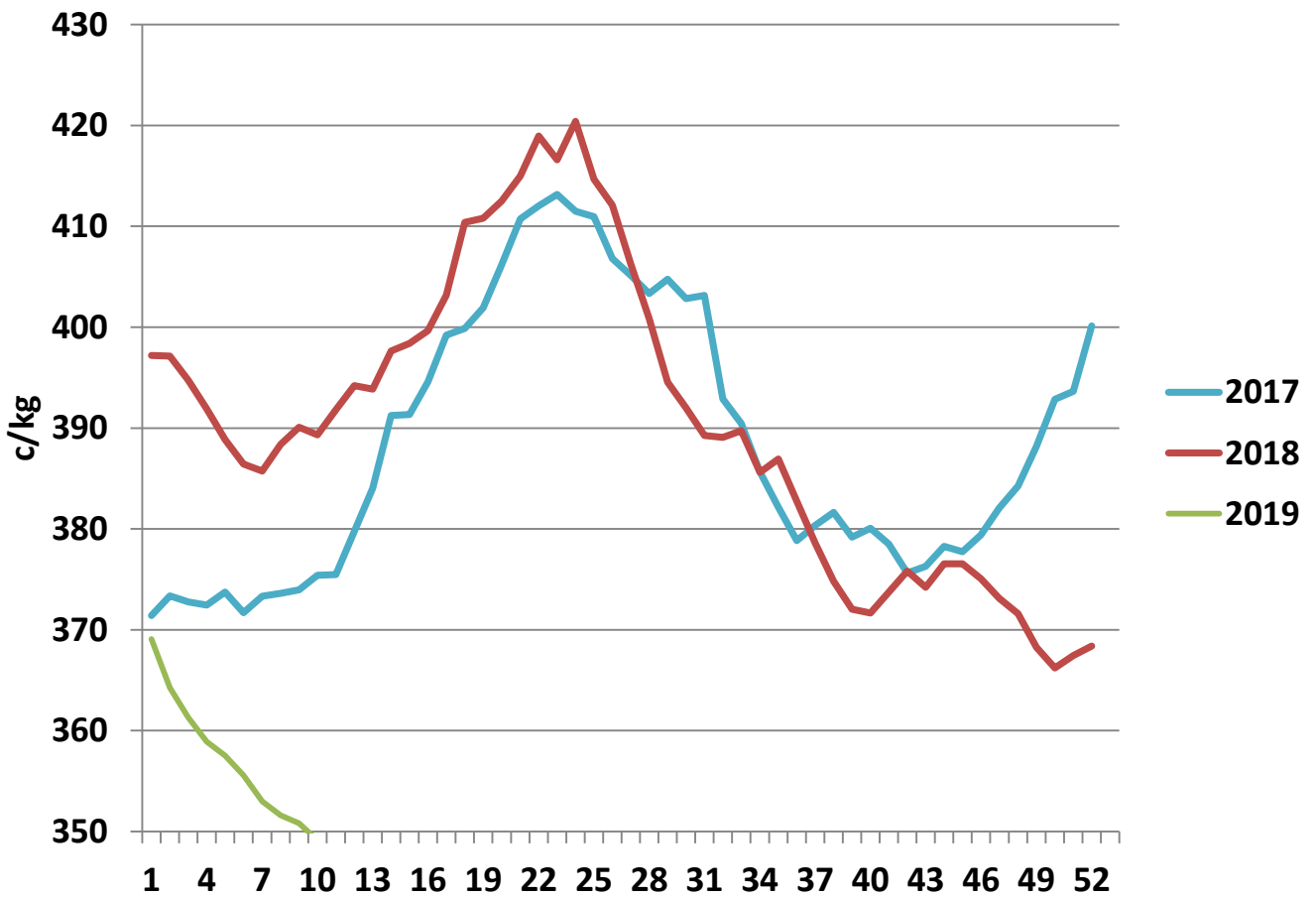
Livestock Pricing

	Ireland	NI	Britain	EU 15 Average	France	Germany
W/C 04/03/19	364.8	395.14	403.8	377.04	385	373

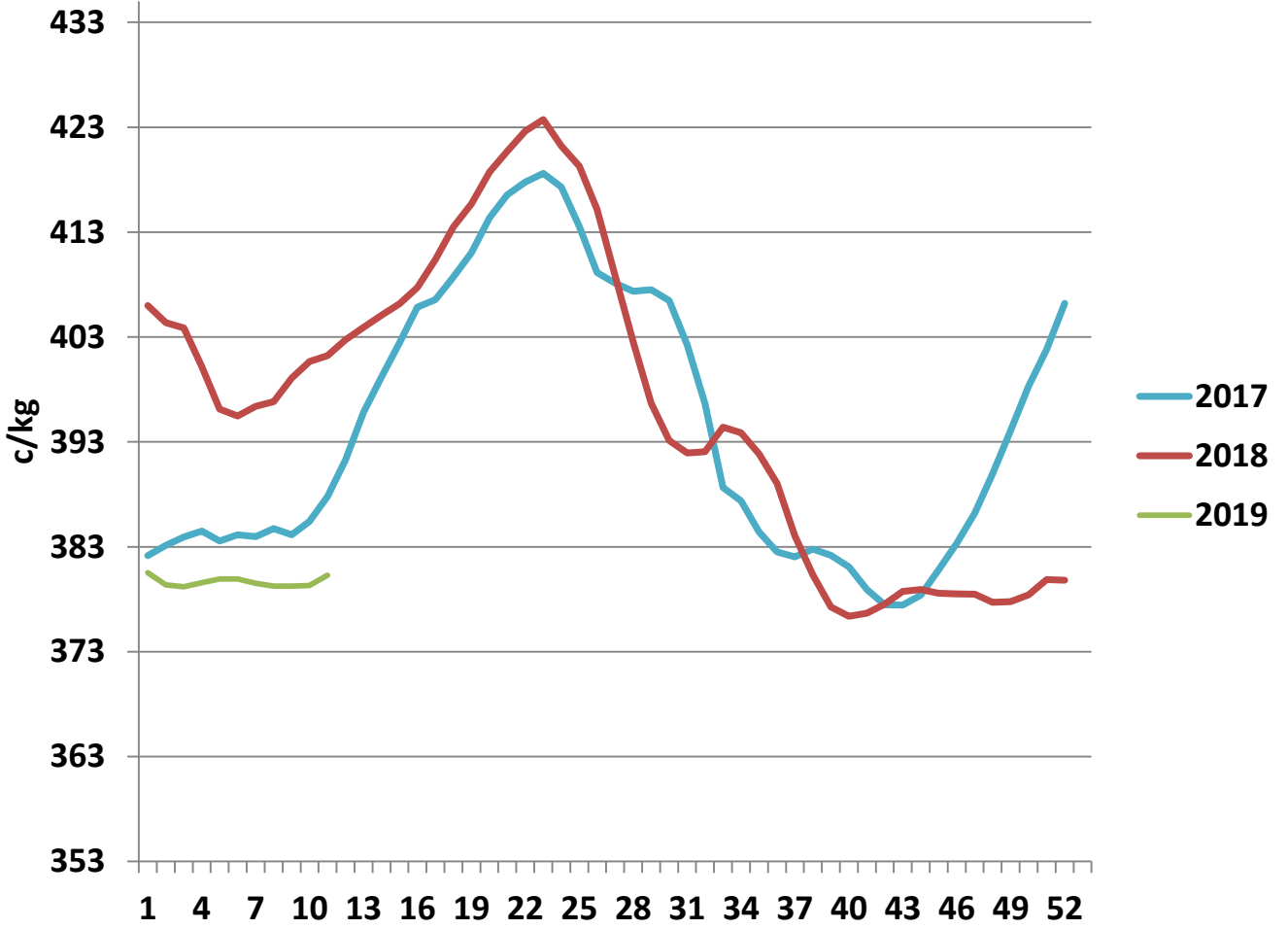
R3 Steer prices ex. VAT



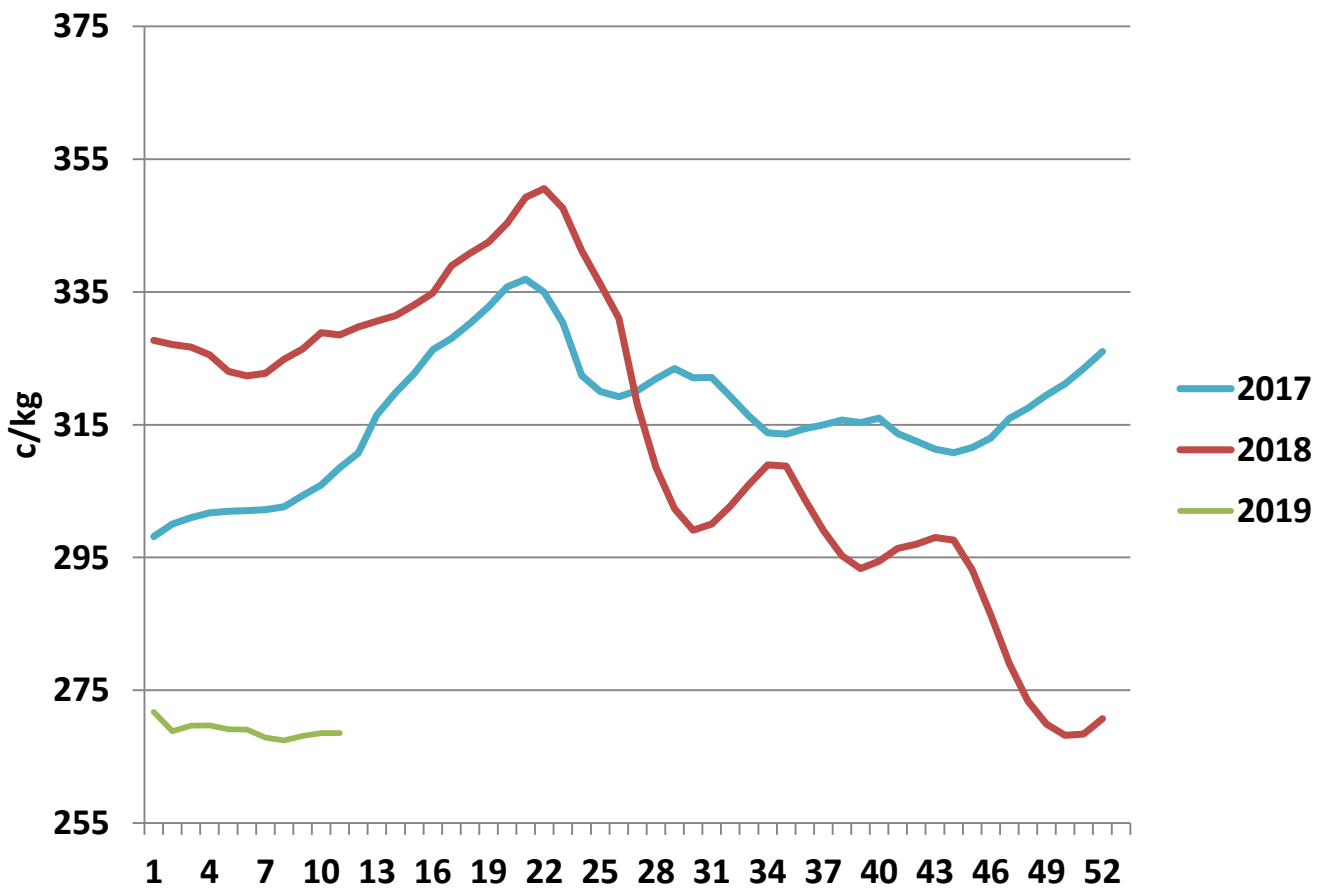
U3 Young Bull prices ex. VAT

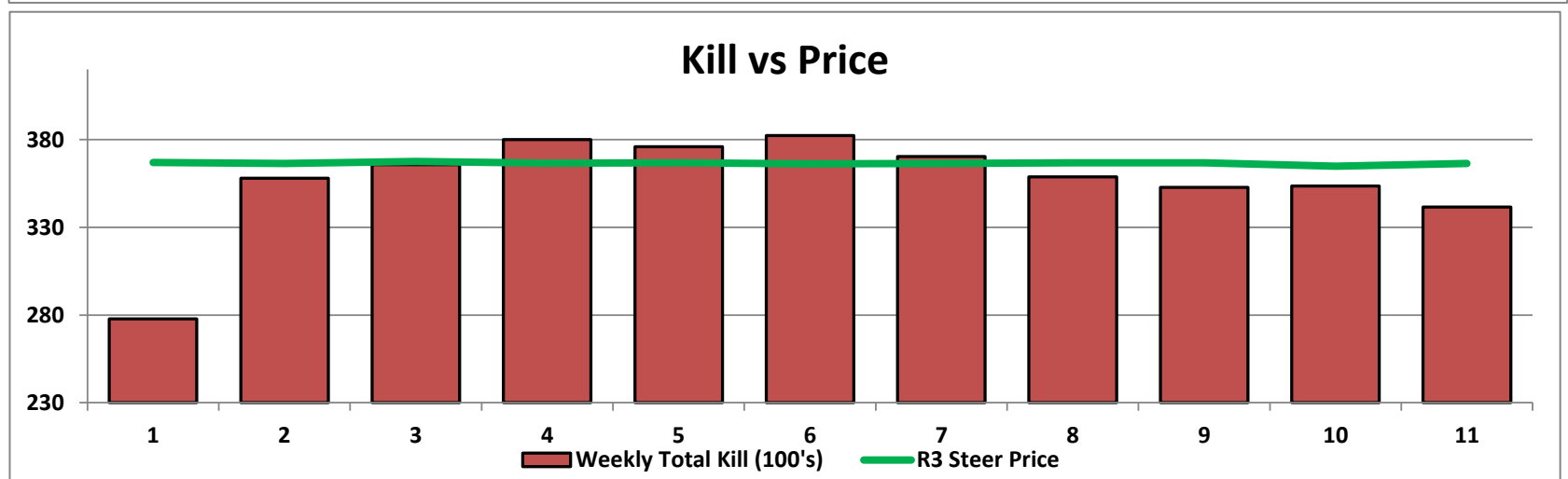
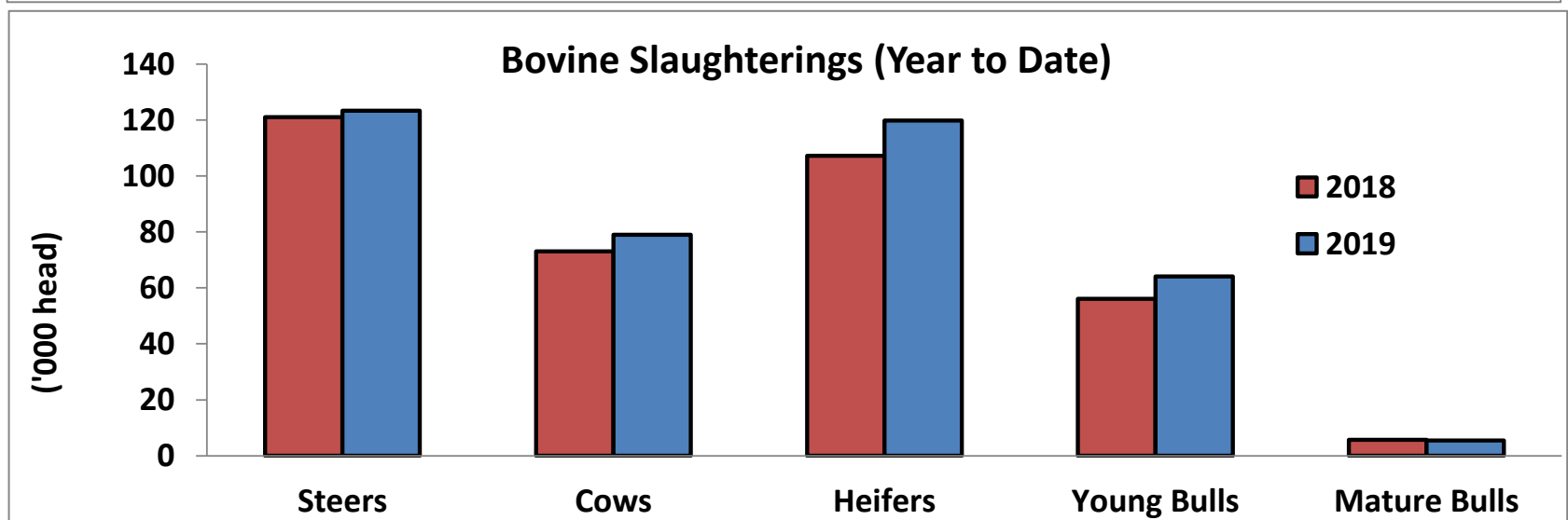
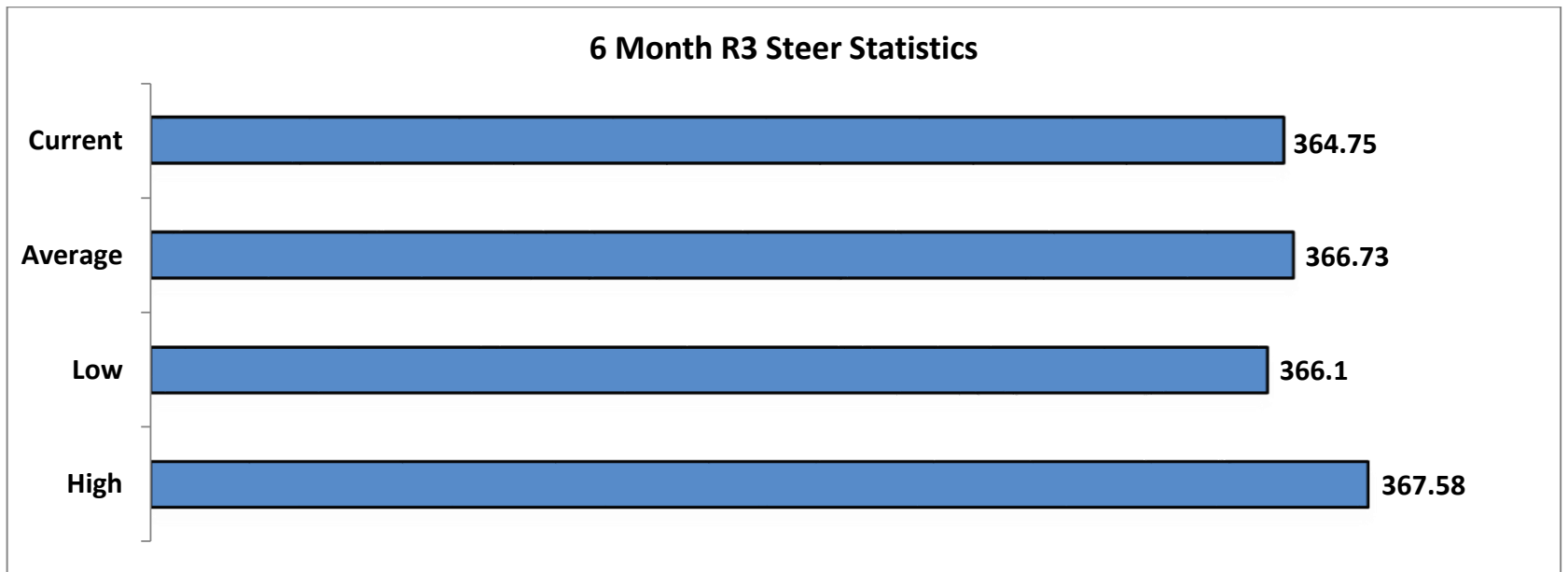


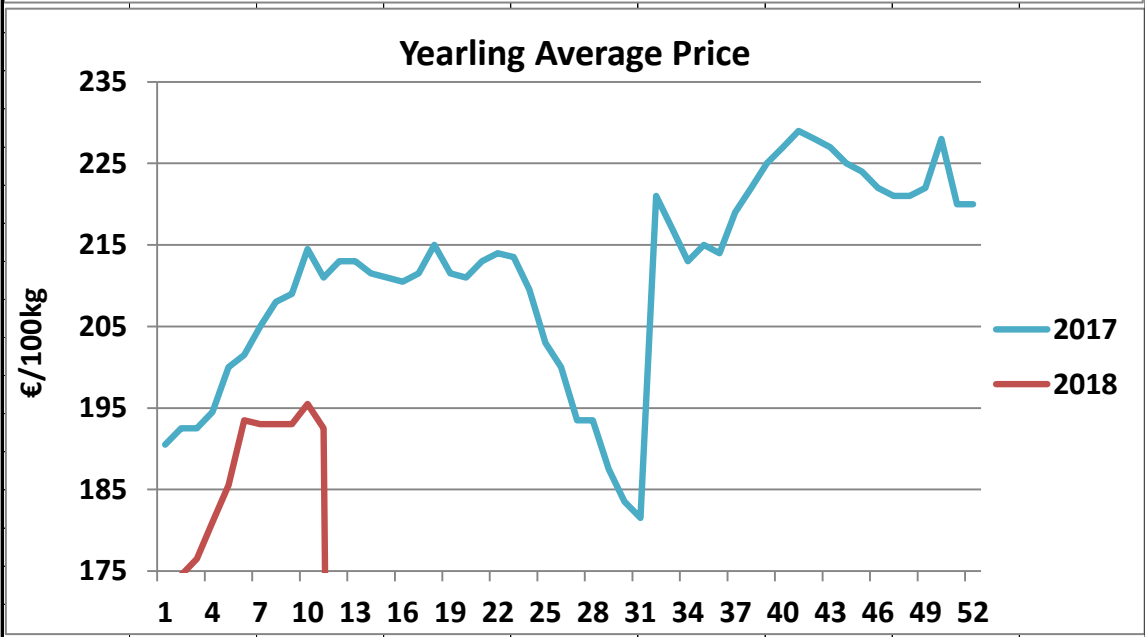
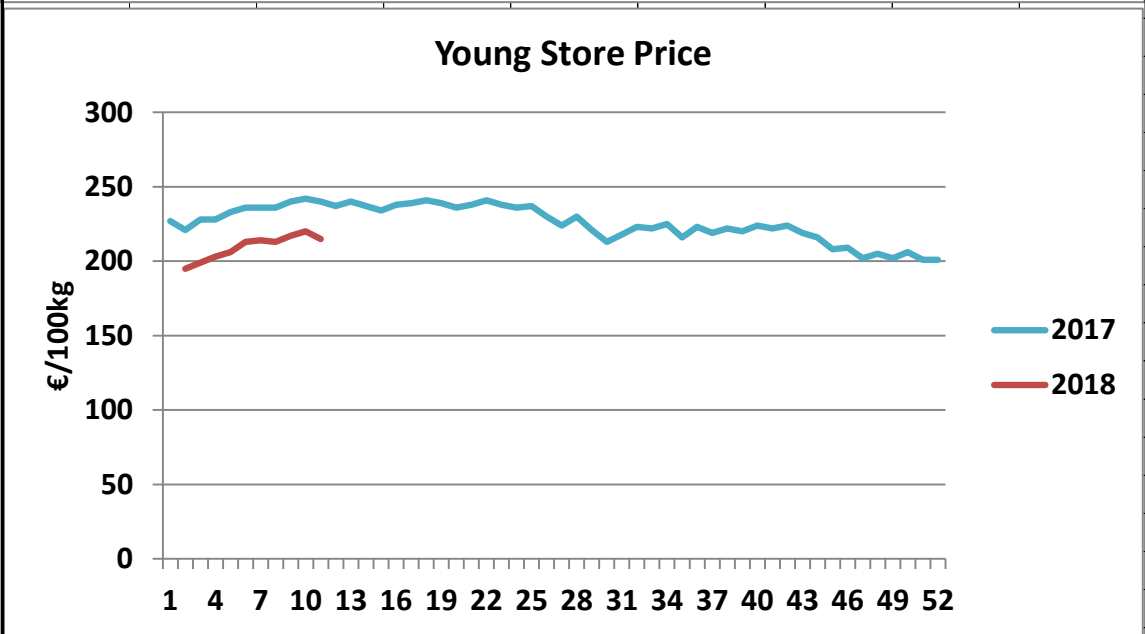
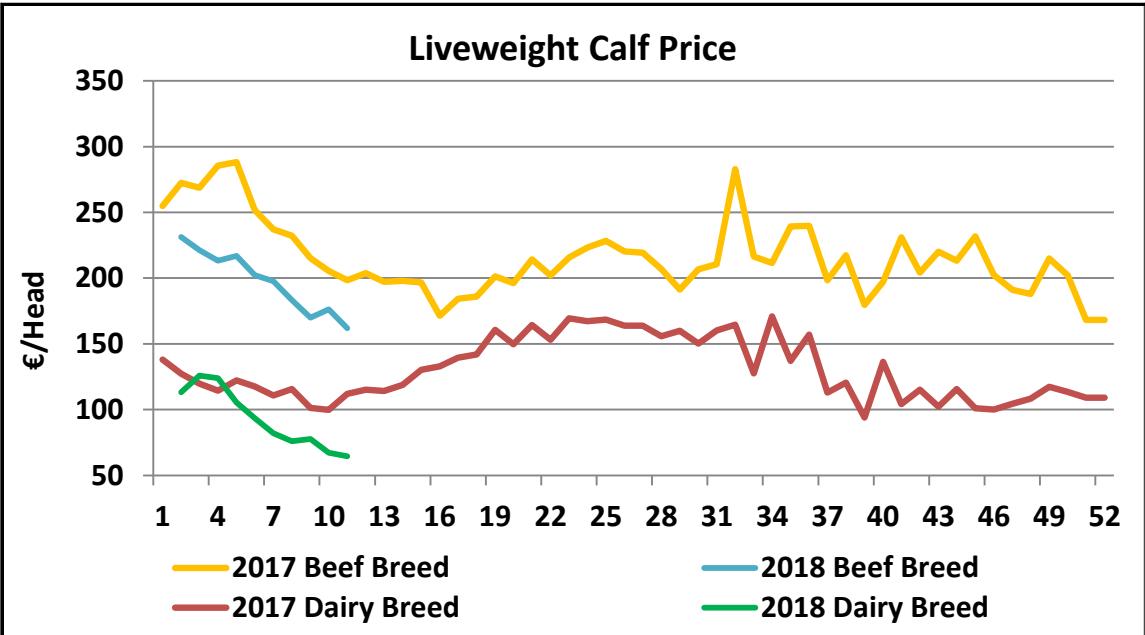
R3 Heifer prices ex. VAT



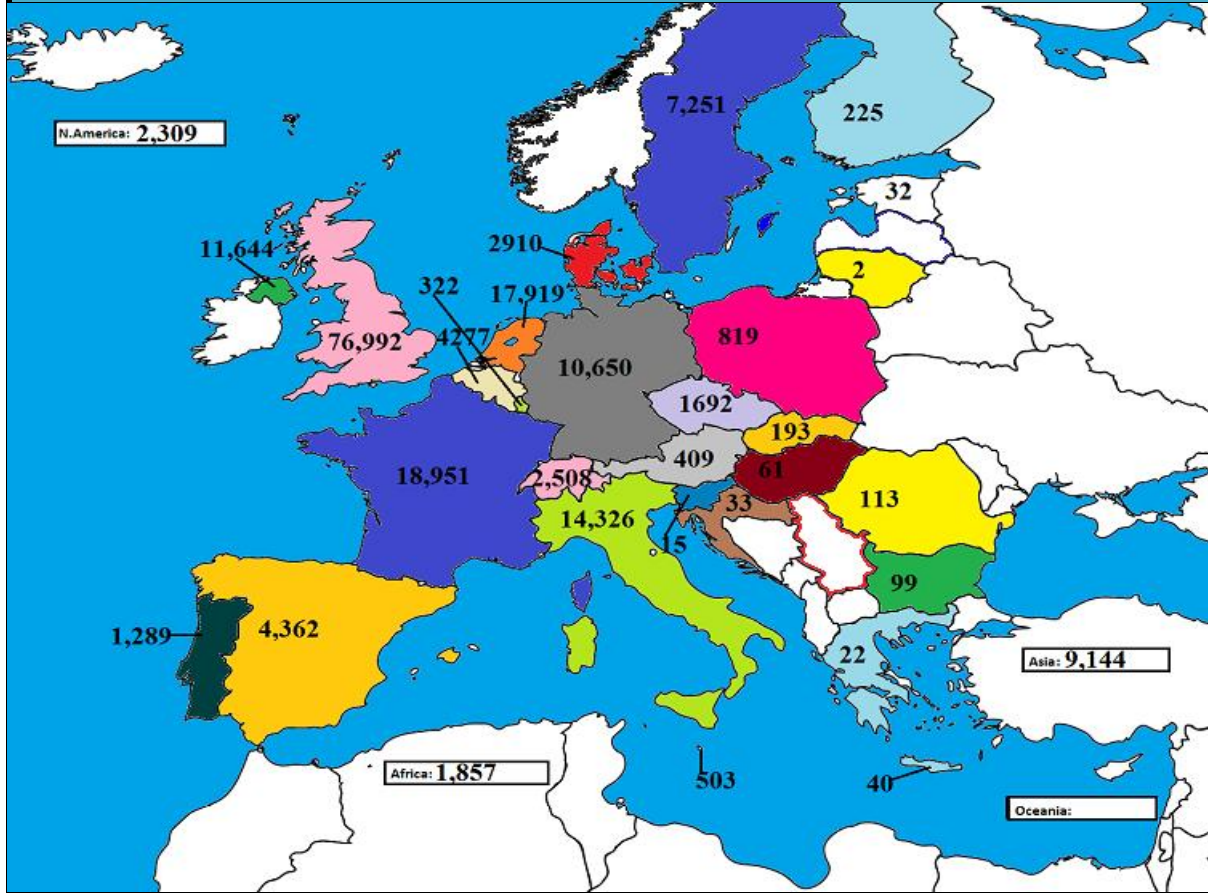
O4 Cow prices ex. VAT



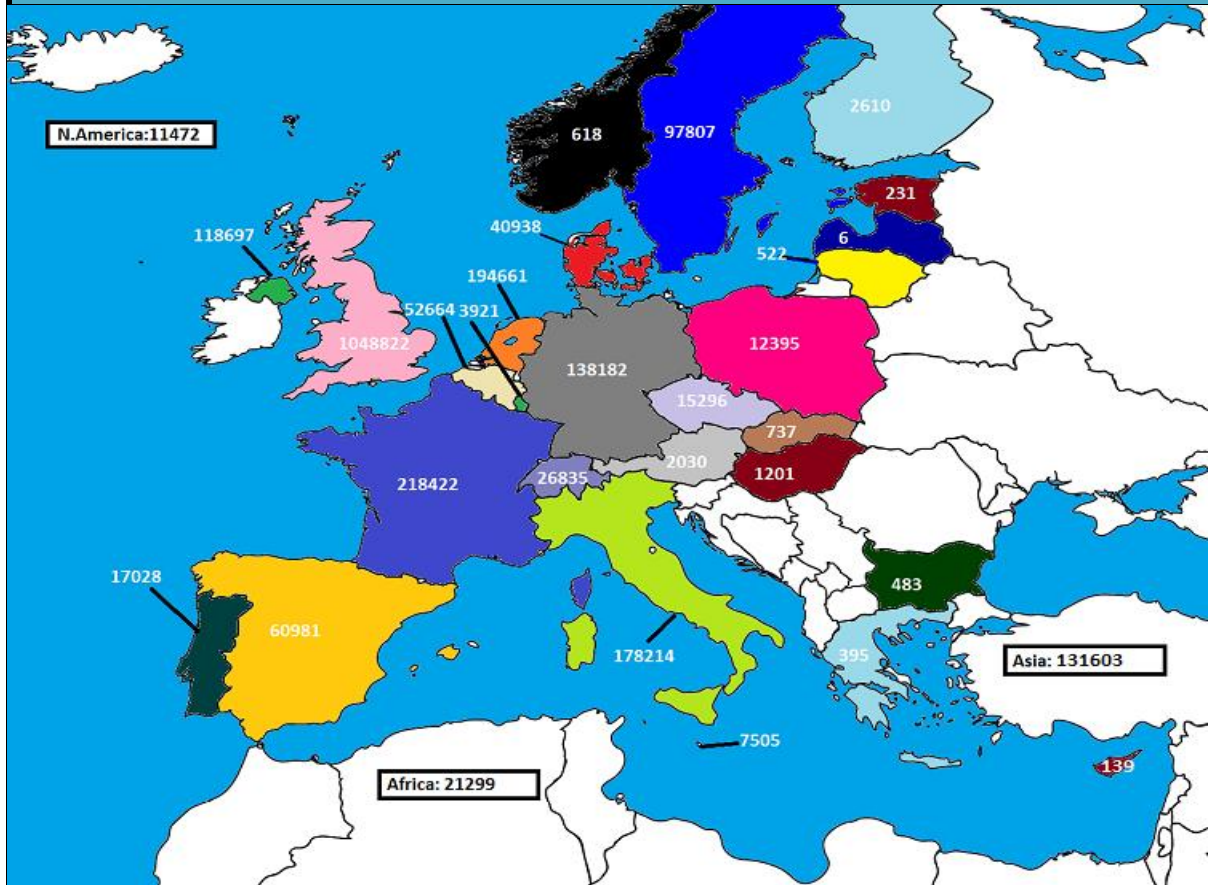




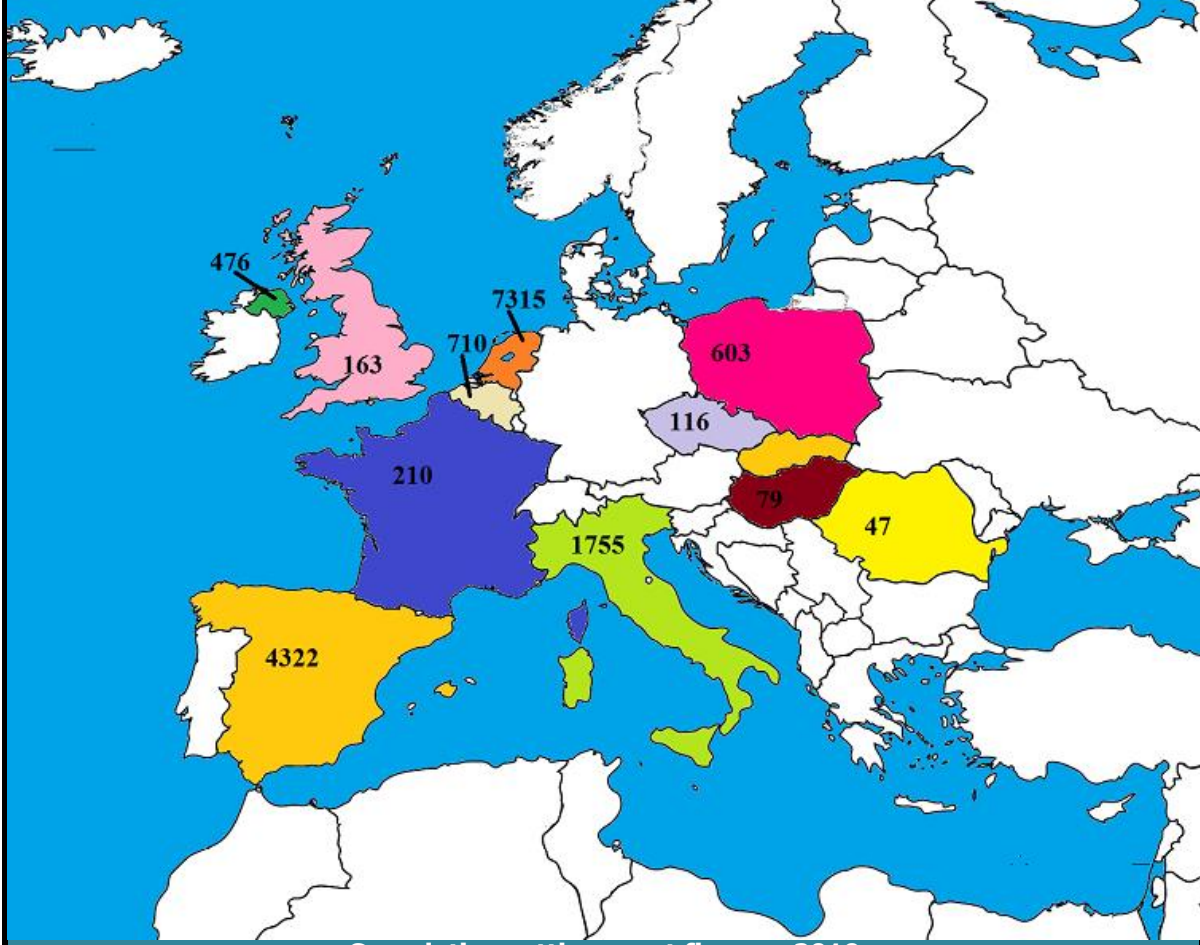
January 2019 Beef exports, €000 (CSO figures)



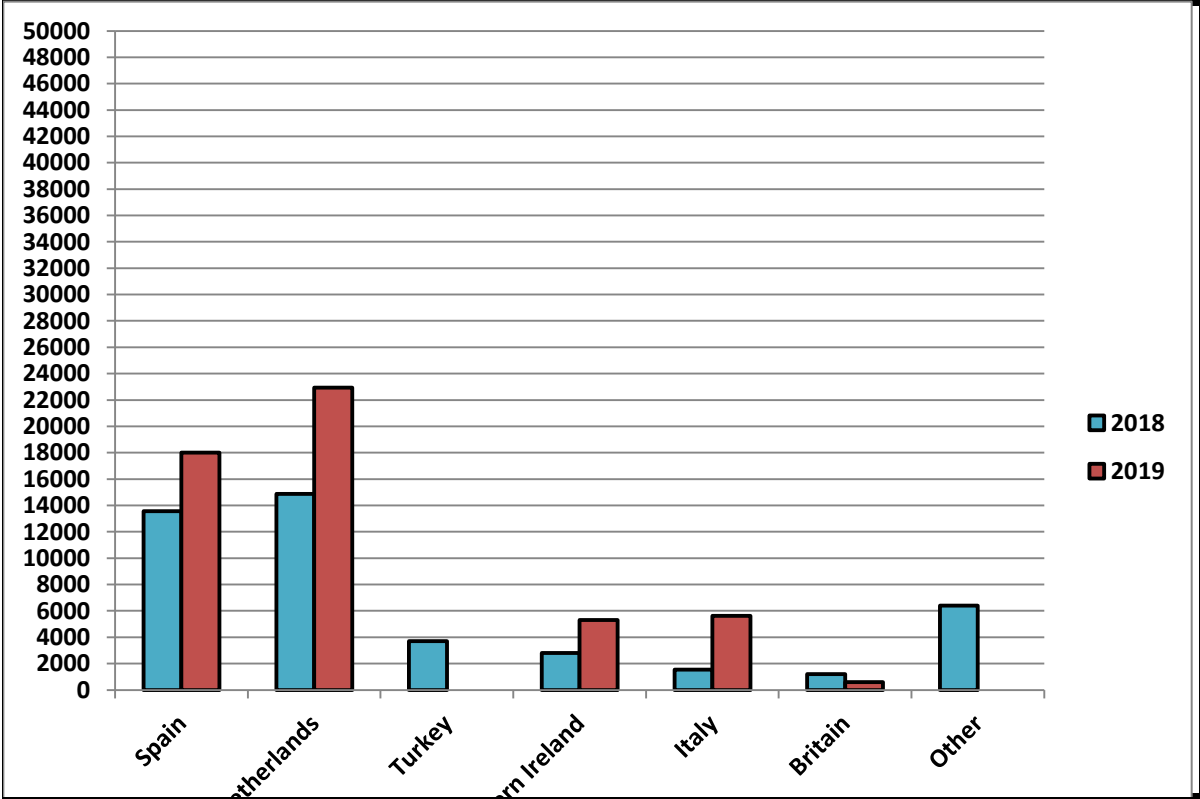
Cumulative beef exports to Dec 2017, €000 (CSO figures)

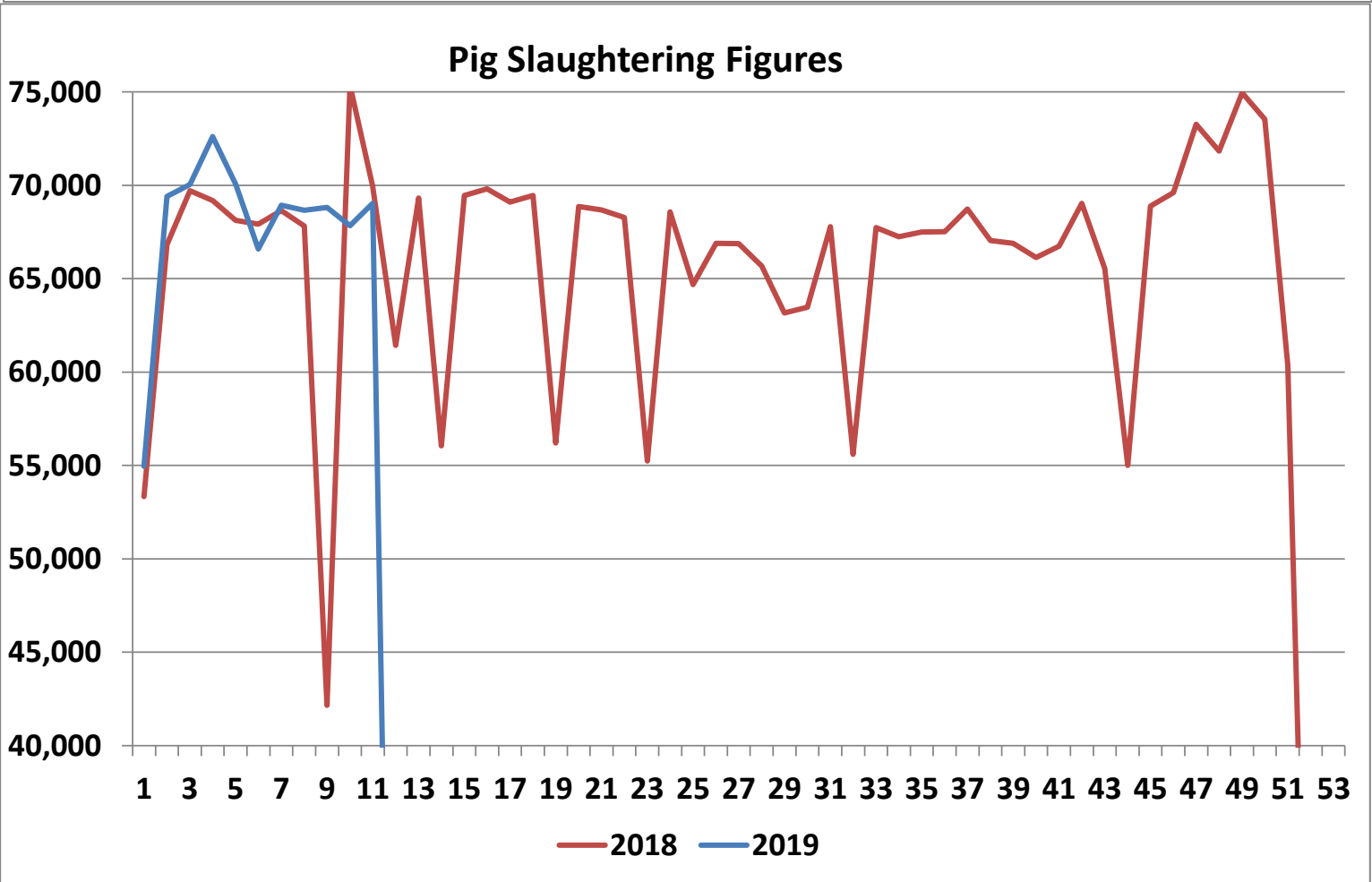
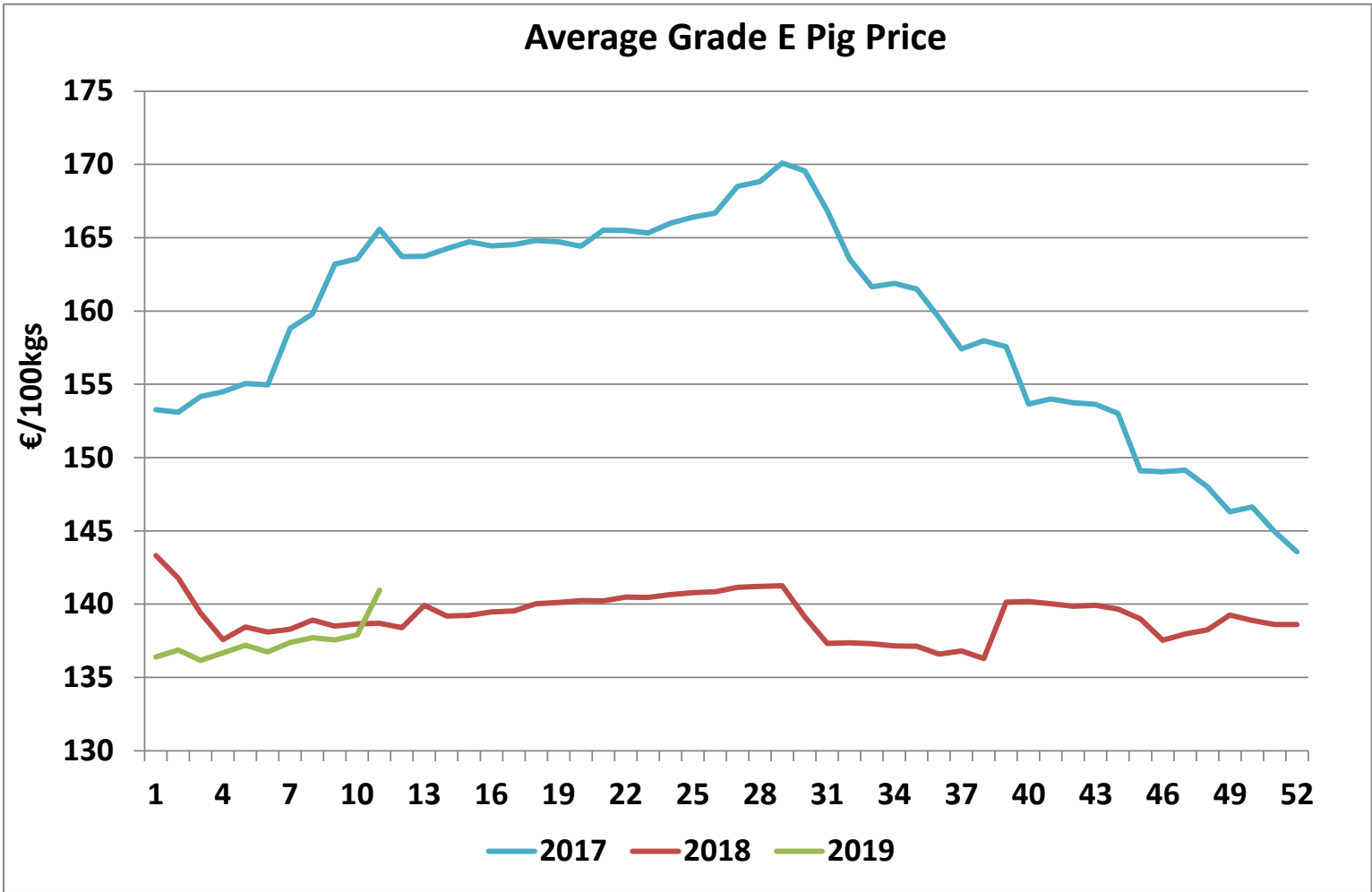


Cattle exported, w/c 04/03/19



Cumulative cattle export figures, 2019





Sheepmeat Information Week 11

11/03/2019 - 17/03/2019

Irish Prices €/100 kg	2019	2018	Change
Ave Factory Price	492.08	573.56	-14.2%
Ave Mart Price	409.34	420.49	-2.7%
National Ave Price	467.26	527.64	-11.4%
YTD Ave	480.58	471.85	1.9%

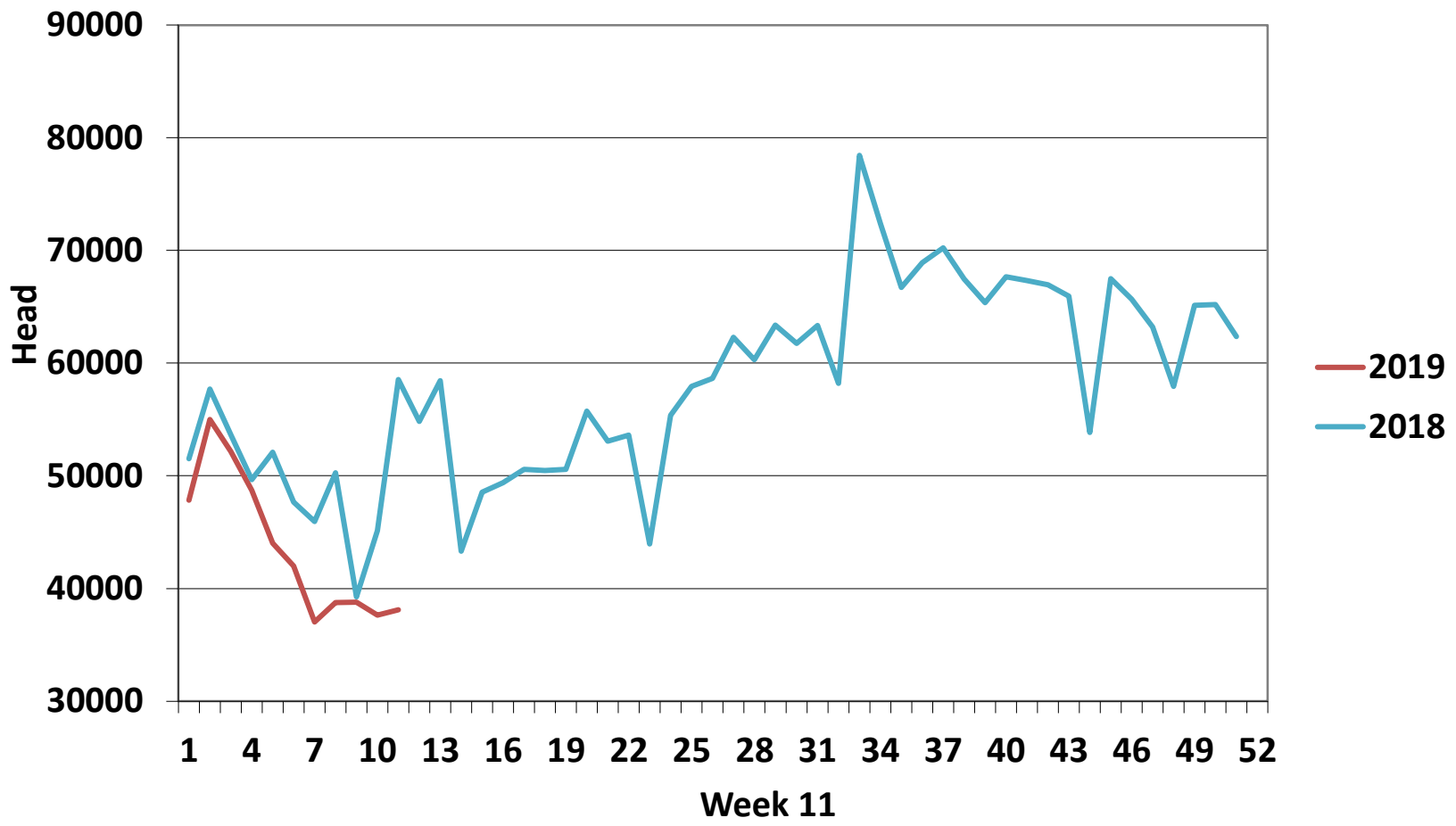
Slaughterings	2019	2018	Change
Weekly	38,102	58,561	-35%
YTD	480,003	551,452	-13%

EU Market Rates Heavy Lambs	€/100kg	% of Community Price
Belgium	511.7	101%
Denmark	466.9	92%
Germany	514.9	102%
Spain	525.3	104%
France	613.0	121%
Croatia	509.7	101%
Ireland	467.3	92%
Italy	519.0	102%
Cyprus	506.0	100%
Latvia	420.0	83%
Lithuania	367.9	73%
Netherlands	511.5	101%
Austria	576.0	114%
Poland	434.1	86%
Romania	253.5	50%
Finland	366.5	72%
Sweden	528.3	104%
Northern Ireland	469.5	93%
Great Britain	489.0	97%
United Kingdom	487.6	96%
Community	506.7	100%

REPORT ON SLAUGHTERING AT SHEEP EXPORT PREMISES
WEEK 11

CATEGORY	2019		2018		DIFFERENCE	
	Weekly	Cumulative	Weekly	Cumulative	Weekly	Cumulative
Lambs/Hoggets	33,069	385,442	49,606	466,168	-16,537	-80,726
Spring Lambs	23	12,848	358	372	-335	12,476
Ewes and Rams	5,010	81,711	8,597	84,874	-3,587	3,163
Light Lambs	-	2	-	38	0	36
TOTAL	38,102	480,003	58,561	551,452	-20,459	-71,449

Weekly Sheep Slaughtering



Ave. Price €/100 kg for Sheepmeat

