

Meat Market Report

18/03/19 - 24/03/19

Week

12



**An Roinn Talmhaíochta,
Bia agus Mara**

Department of Agriculture,
Food and the Marine

MARKET SUMMARY

Beef

Deadweight Prices c/100Kg (Including VAT)

	U3	U4	R3	R4	O3	O4	P+
Steers	394.3	390.8	386.3	384.7	368.5	370.7	345.7
Heifers	415.5	413.4	399.8	400.3	381.2	382.7	347.7
Young Bulls	367.6	358.9	358.3	356.3	337.7	336.1	326.3
Cows			309.7	308.7	283.9	283.3	270.9

Liveweight Prices

*Bull Calf Average Price	€121.6 per head (Excluding VAT)
**Young Store Average Price	€217.0 per 100kg (Excluding VAT)
***Yearling (male & female) Price	€193.5 per 100kg (Excluding VAT)

* Aged 8-28 days ** Aged 180-364 days, Male & Female ***age 365-730 days

Slaughterings

32,623 cattle slaughtered this week, of which steers were 11,193 (34%), heifers 10,354 (32%), young bulls 4,397 (13%) and cows 5,970 (18%). Total YTD slaughter is 424,257 compared to 395,093 in 2018, a 7% increase.

Live Trade

17,728 cattle were exported in the week commencing 18/03/2019 16,971 to EU (Except NI). Live exports for 2019 amount to 88,659 compared to 67,951 in 2018, up 30% on 2018 levels.

*This data is provisional and subject to revision.

CONTENTS:

Page 2: Market Summary Beef
 Page 3: Market Summary Other Meats
 Page 4: Beef Price and Slaughter Summary
 Page 5: Comparative Beef Prices
 Page 6: Steer and Young Bull Price
 Page 7: Heifer and Cow Graphs
 Page 8: Price and Slaughter Graphs
 Page 9: Liveweight Beef Graphs

Page 10: Beef Export Maps
 Page 11: Beef Export Info
 Page 12: Pig price and slaughter graphs
 Page 13: Sheep prices and slaughter
 Page 15: Sheep price and slaughter graphs

MARKET SUMMARY

Pigmeat

Grade E Pig
Prices (Ex.
VAT)

The Grade E Pig price for week commencing 18/03/2019 was €140.96 per 100Kg. in comparison to €138.40 in the same week last year, which represents a 1.8% increase.

Slaughtering

54,521 pigs were slaughtered in week 12 of which 1,664 were sows. The cumulative figure for pig slaughterings in 2019 is 801,507 which is up 3% against the same point last year.

Sheepmeat

Sheepmeat
Prices (Ex.
VAT)

The national average price for the week commencing 18/03/2019 was €469.27 per 100Kg, a decrease of 14% over the same week last year.

Slaughtering

38,098 sheep were slaughtered at sheep export premises the week commencing 18/03/2019, compared to 54,822 in the same week of 2018. Sheep slaughterings for 2019 are 15% down on 2018 at 518,101 head.

Live Trade

Total live exports to European Countries stood at 20,769 head to the end of 2018.

Poultry

Slaughtering

Cumulative poultry slaughterings for 2019* stand at 24,329,975 birds at the end of week 12, up 10% compared to the same period last year.

*Latest Figures are provisional and subject to change

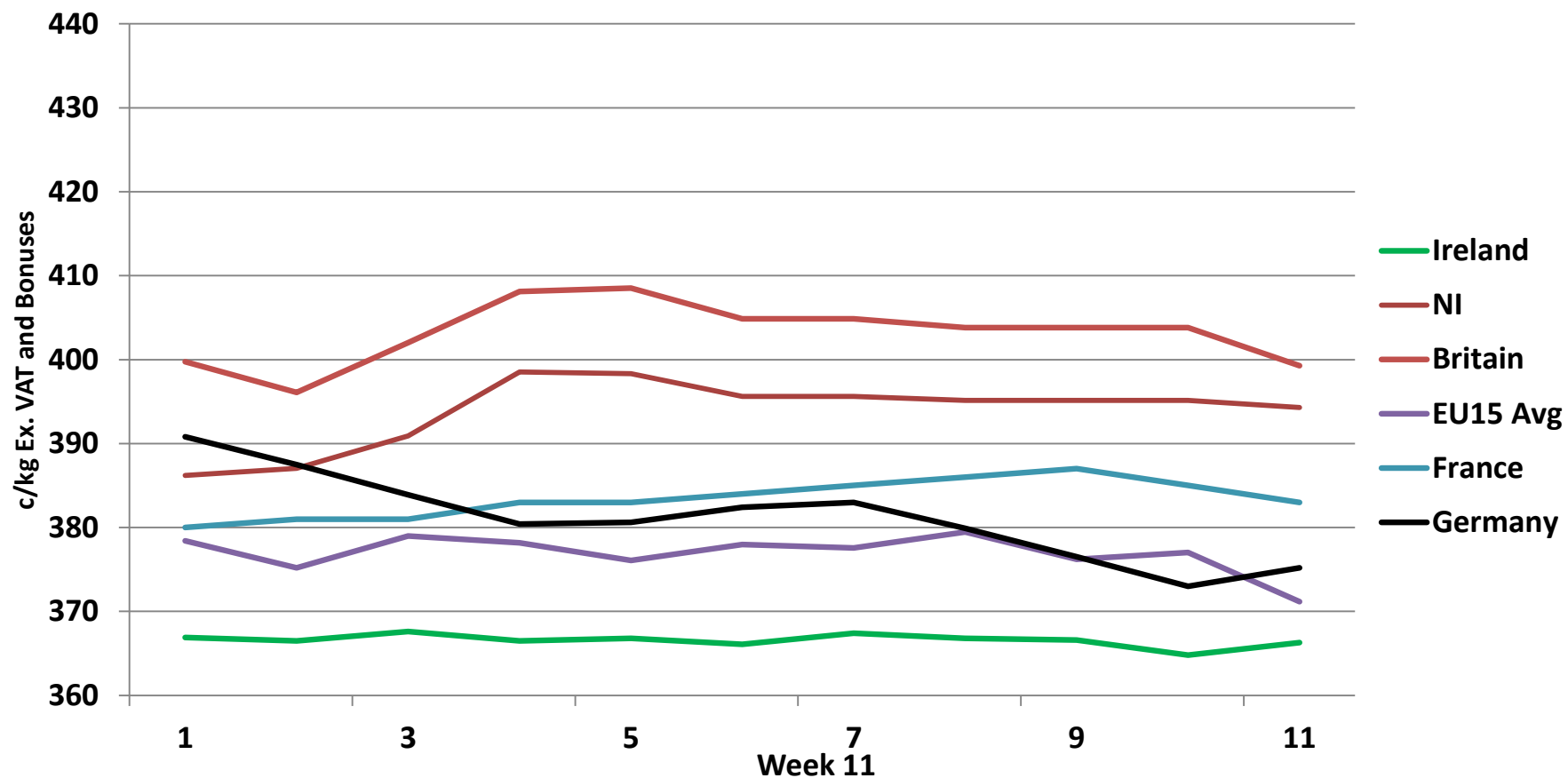
Dead Weight Prices	W/C	W/C	Same week 2018	% change prev week	% change 2018
	18/03/19	11/03/19	19/03/18		
Steers (R3) (c/kg)	366.5	366.3	390.1	0.0%	-6.1%
Heifers (R3) (c/kg)	379.3	380.3	402.7	-0.3%	-5.8%
Young Bulls (U3) (c/kg)	348.8	348.1	394.2	0.2%	-11.5%
Cows (04) (c/kg)	268.8	268.6	329.7	0.1%	-18.5%

Live Weight Prices	W/C	W/C	Same week 2017	% change previous week	% change 2018
	18/03/19	11/03/19	19/03/18		
Yearlings (Male) (Aged 365 - 730 days) - (€/100Kg)	190	186	212	2.2%	-10.4%
Yearlings (Female) (Aged 365 - 730 days) - (€/100Kg)	197	199	214	-1.0%	-7.9%
Young Stores (Male & Female) (Aged 180 - 364 days) - (€/100Kg)	217	215	237	0.9%	-8.4%
Bull Calf (€/head) Dairy	77.3	64.5	115.1	19.7%	-32.9%
Bull Calf (€/head) Beef	166.0	161.8	203.8	2.6%	-18.5%
Bull Calf (€/head) Average	121.6	113.2	159.4	7.5%	-23.7%

Slaughter Figures	% of weekly figures	W/C	Same week 2018	Year to Date		Change 2019 v 2018	
		18-Mar-19		2019	2018	Head	%
Steers	34.3%	11,193	11,691	134,466	132,663	1,803	1.4%
Cows	18.3%	5,970	6,885	84,945	79,987	4,958	6.2%
Heifers	31.7%	10,354	9,414	130,152	116,664	13,488	11.6%
Young Bulls	13.5%	4,397	3,314	68,540	59,458	9,082	15.3%
Mature Bulls	2.2%	709	652	6,154	6,321	-167	-2.6%
Total	100%	32,623	31,956	424,257	395,093	29,164	7.4%

Live Exports	W/C	Same week	W/C	Year to Date		Change 2019 v 2018	
	18-Mar-19	2018	11-Mar-19	2019	2018	Head	%
Northern Ireland	757	360	705	6,888	3,579	3,309	92%
EU Except NI	16,971	11,799	11,894	81,568	59,880	21,688	36%
Third Countries	0	0	0	203	4,492	-4,289	-
Total	17,728	12,159	12,599	88,659	67,951	20,708	30%

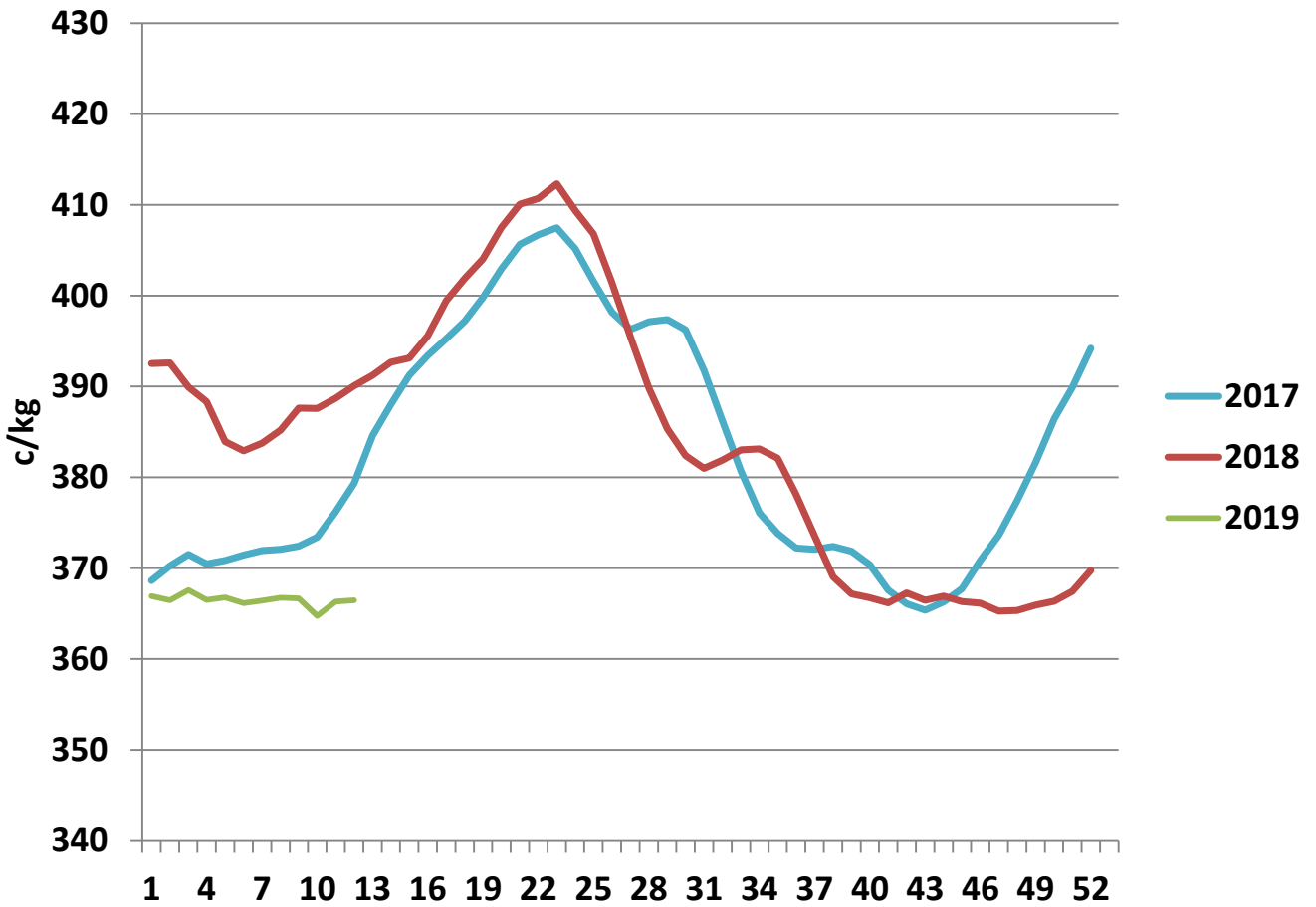
Irish Deadweight Cattle Prices vs Selected Other Markets, 2019



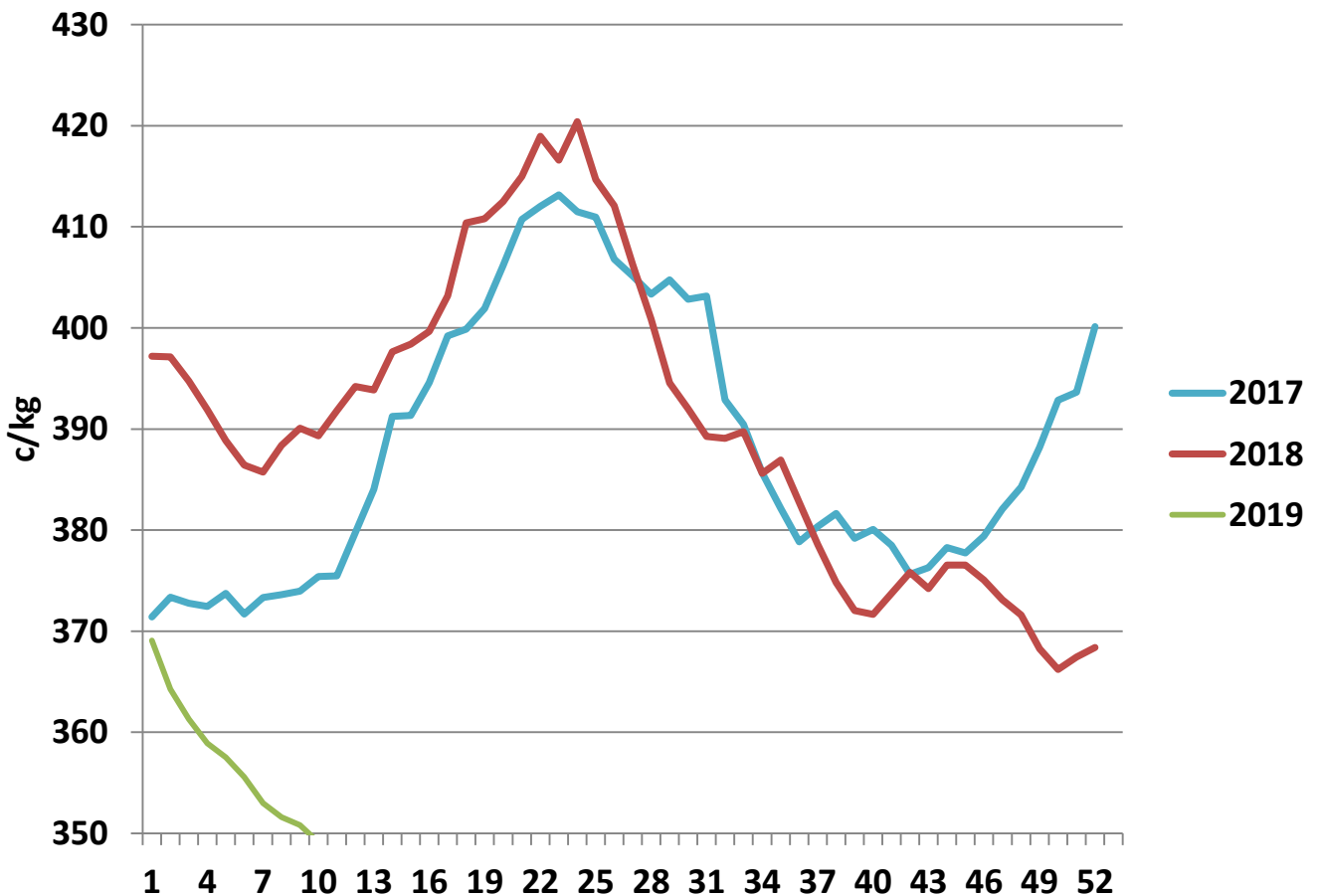
Livestock Pricing

	Ireland	NI	Britain	EU 15 Average	France	Germany
W/C 11/03/19	366.3	394.31	399.27	371.17	383	375.2

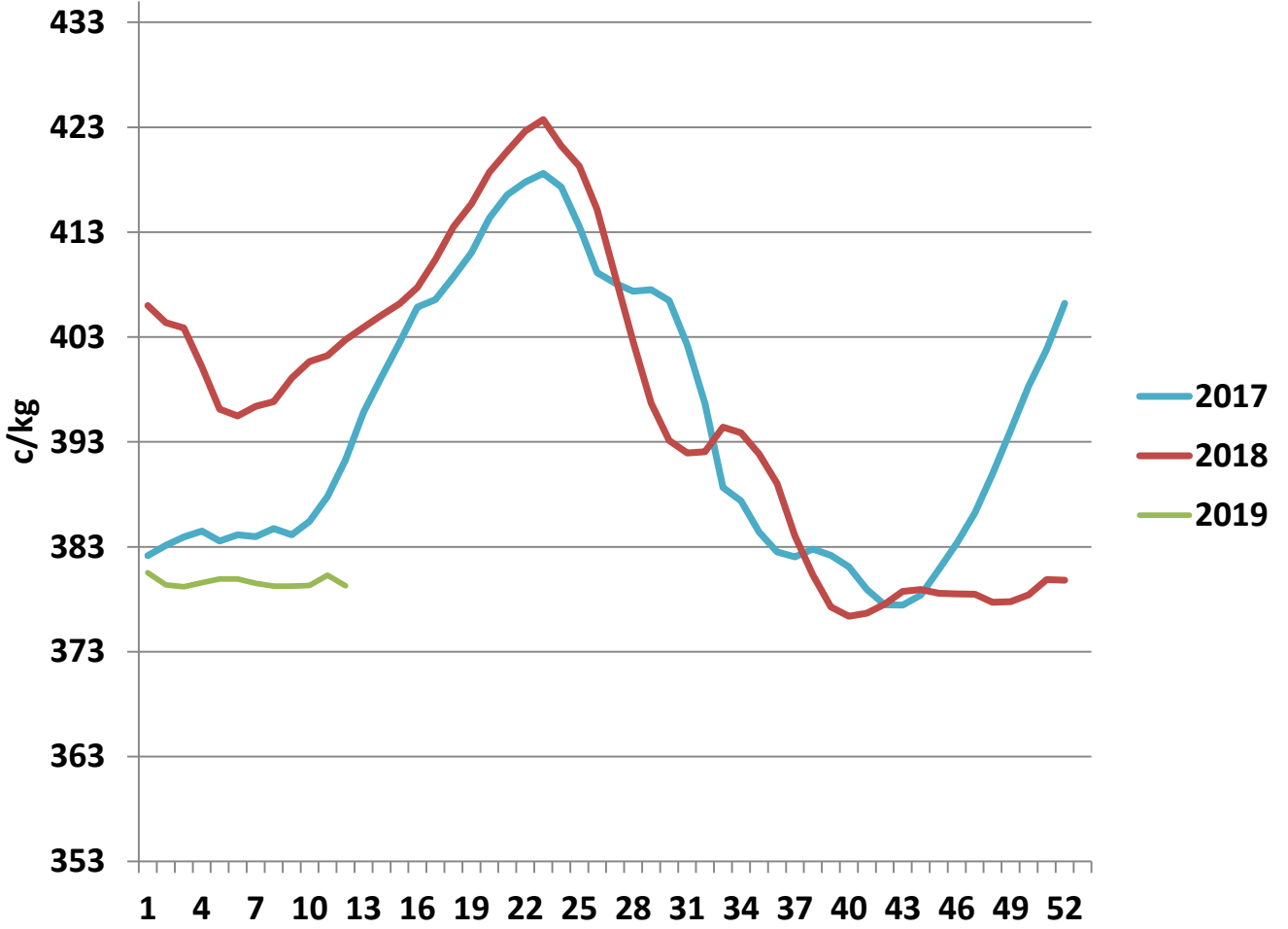
R3 Steer prices ex. VAT



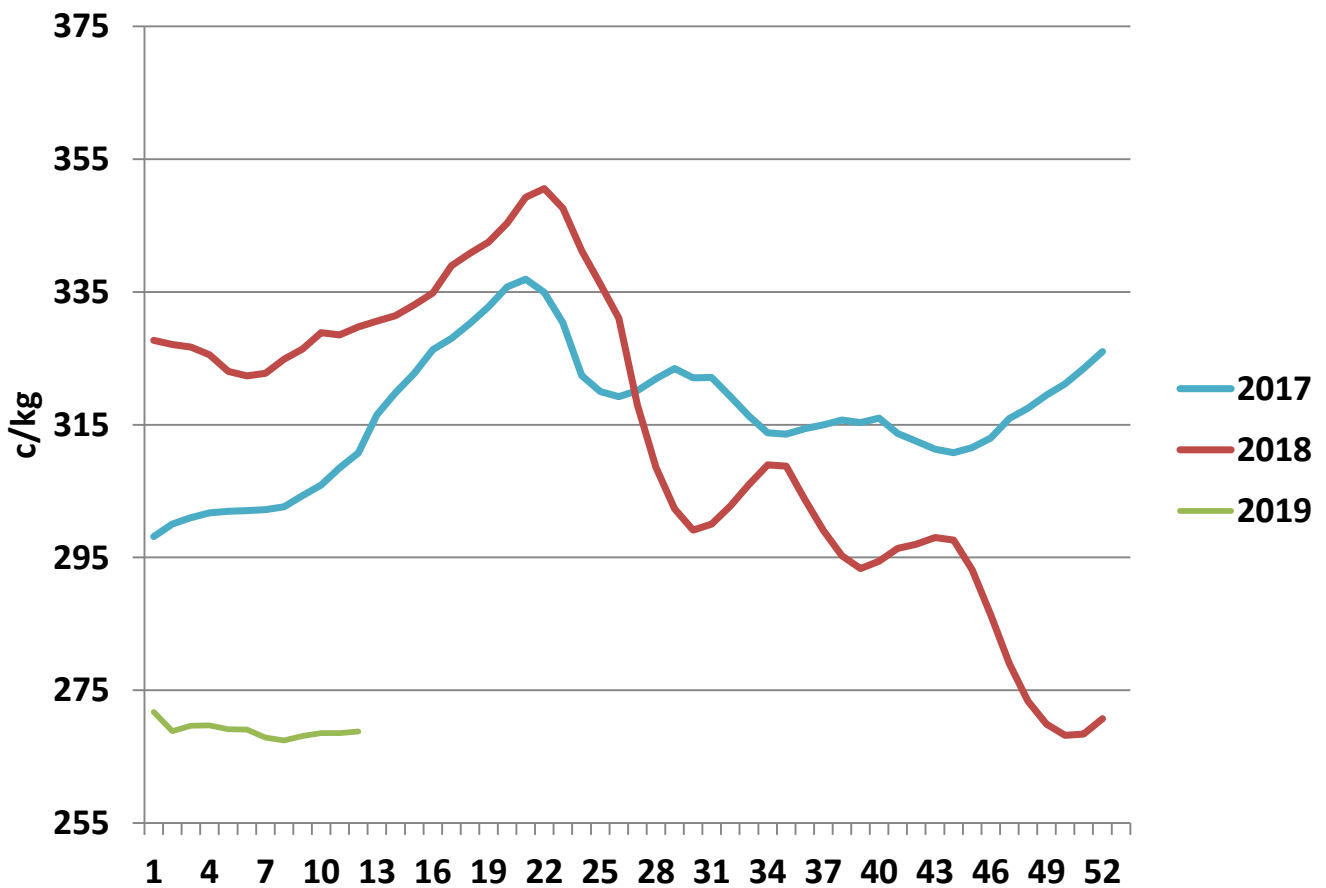
U3 Young Bull prices ex. VAT

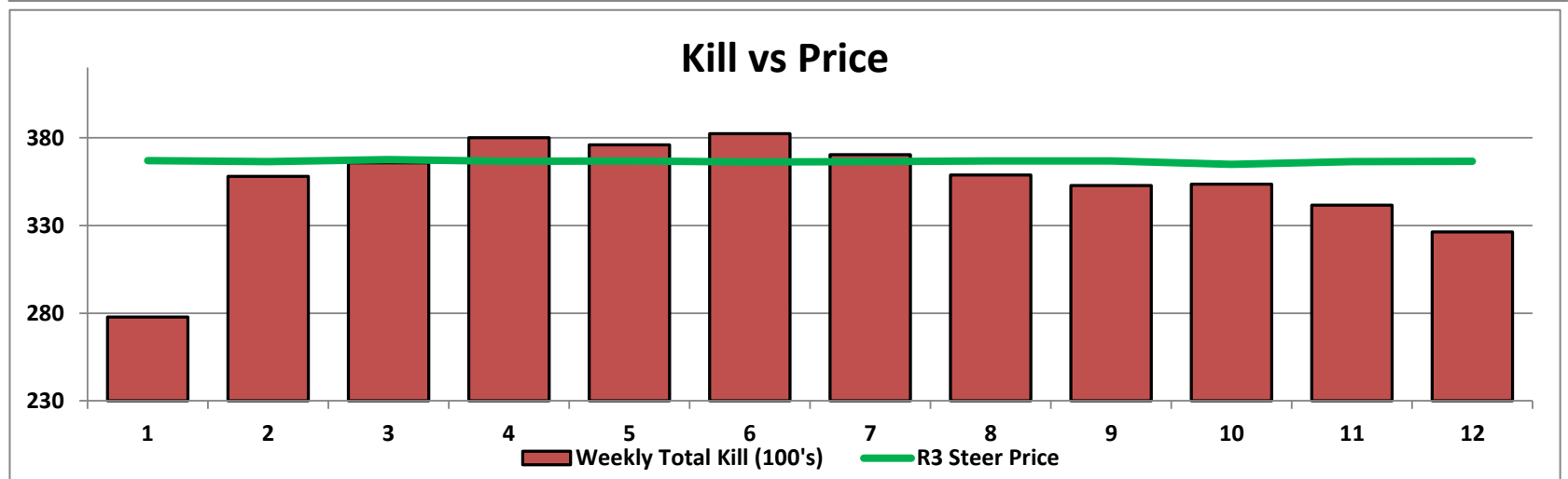
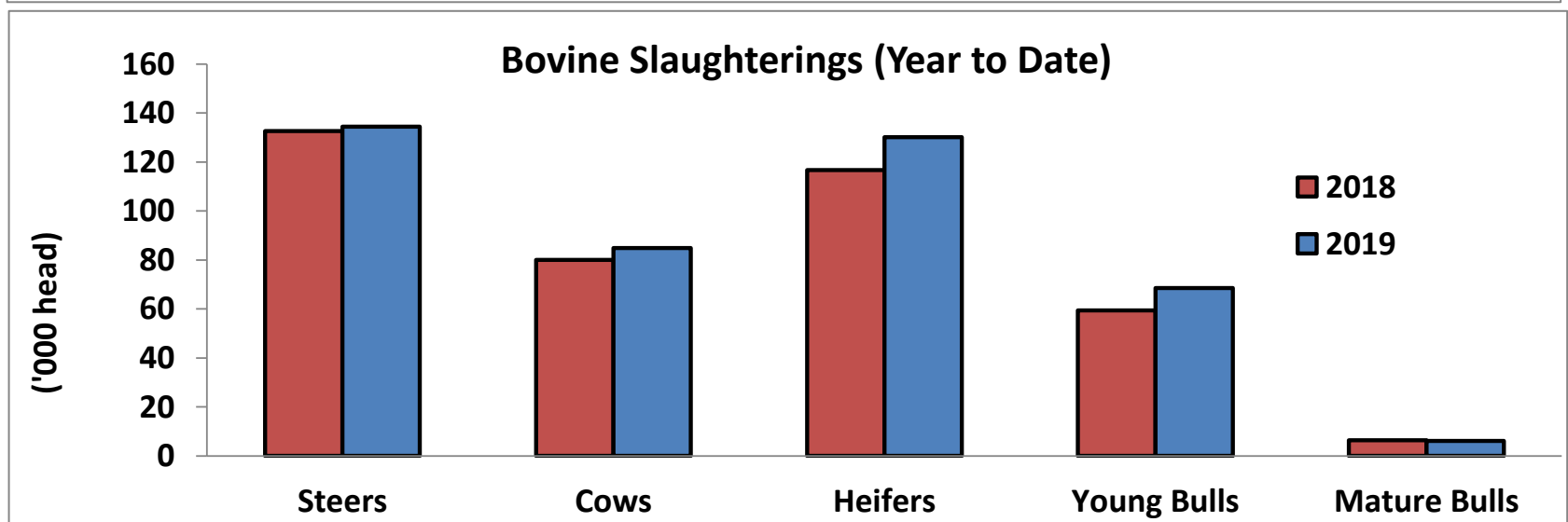
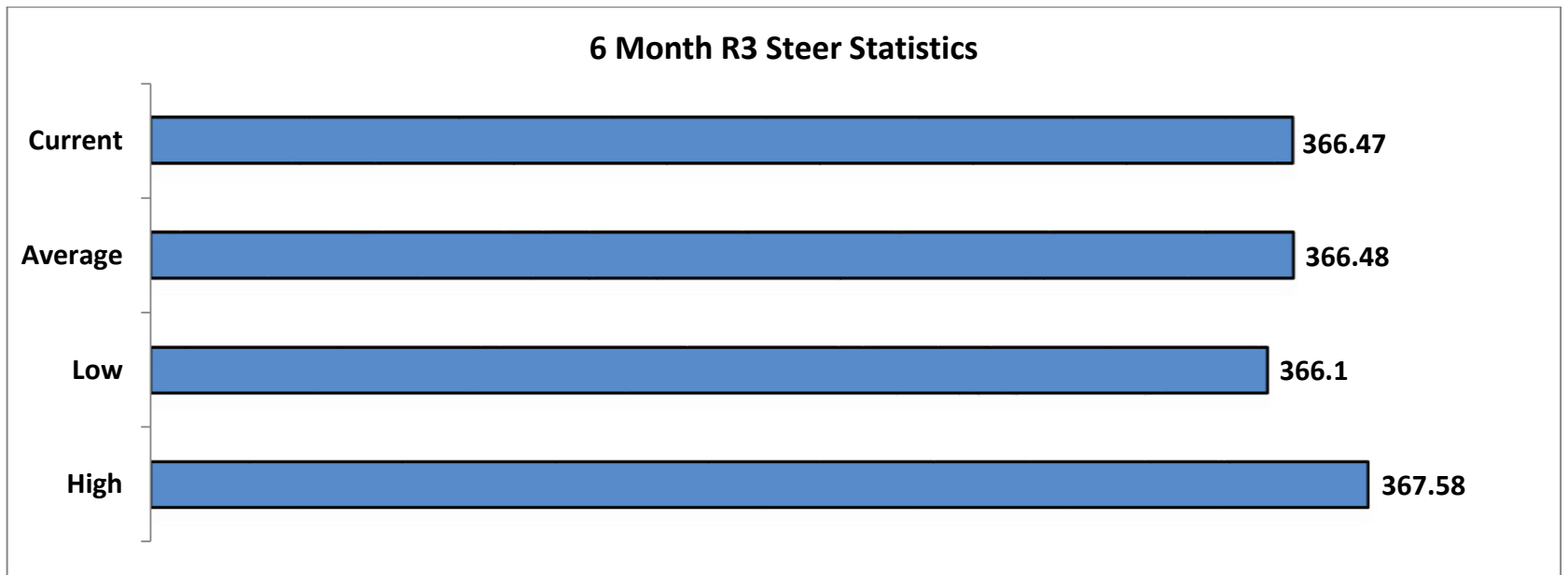


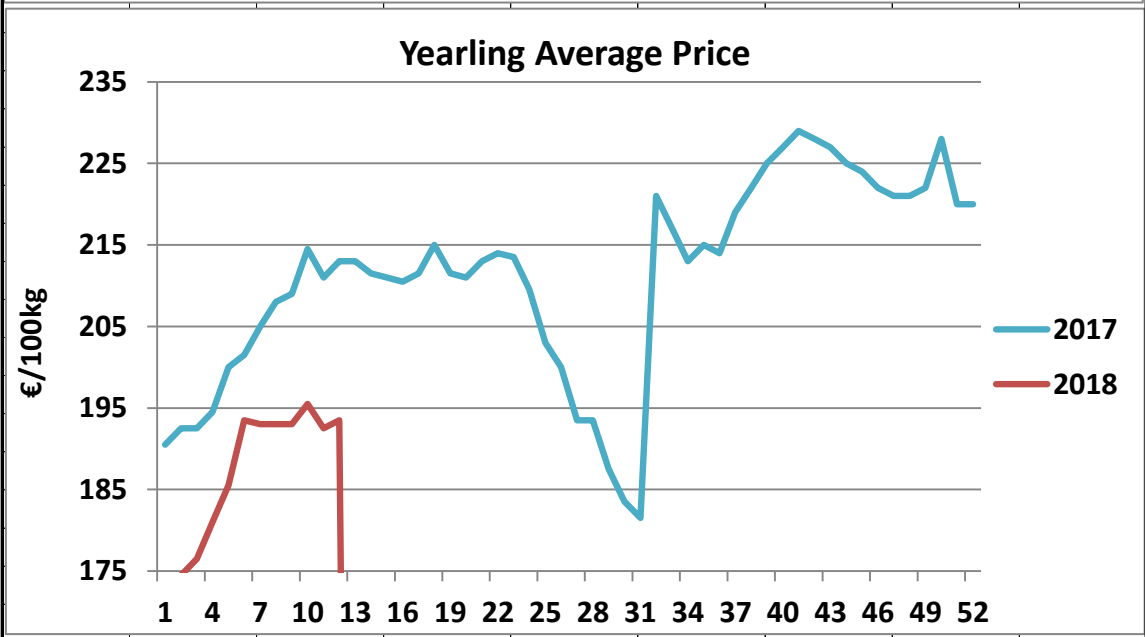
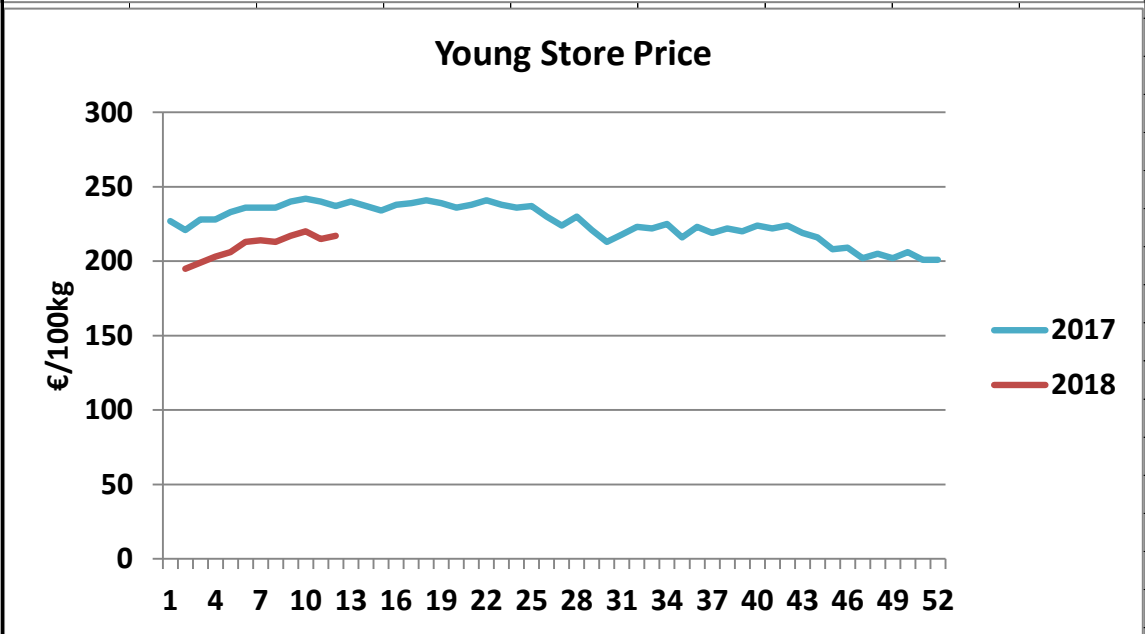
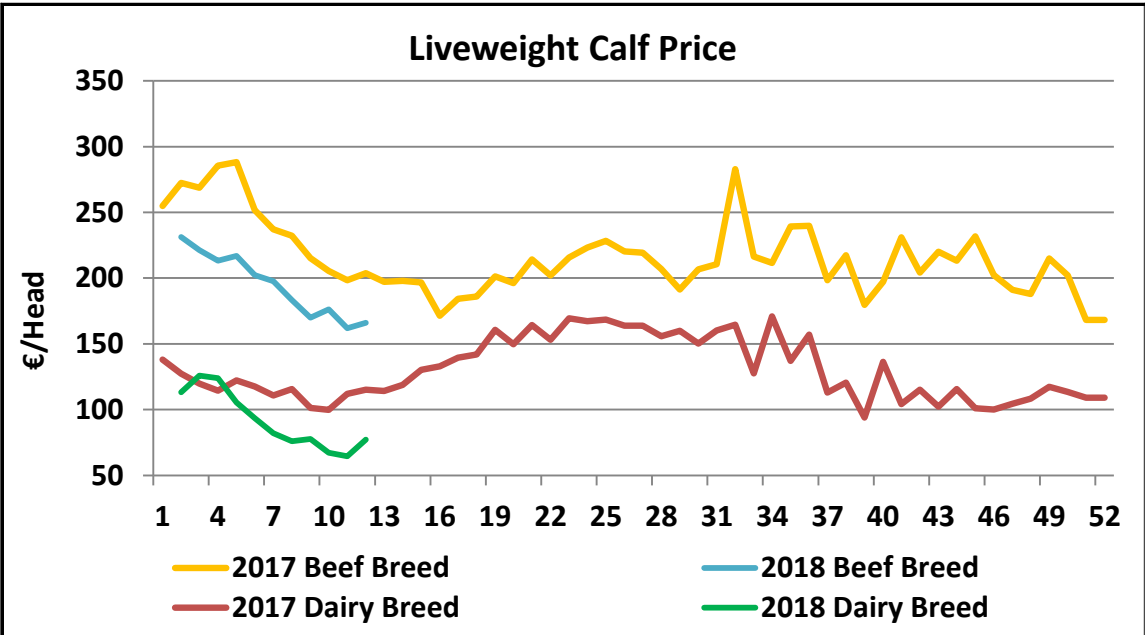
R3 Heifer prices ex. VAT



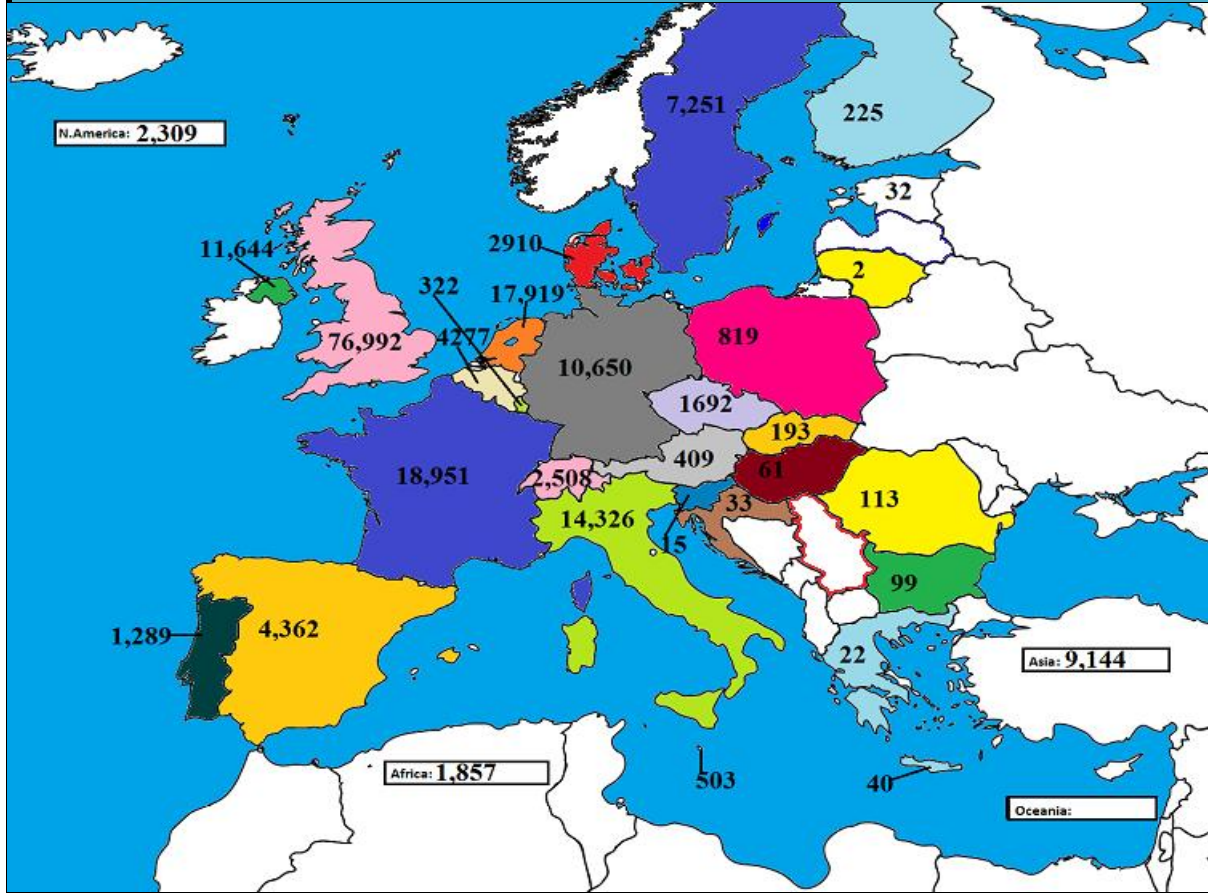
O4 Cow prices ex. VAT



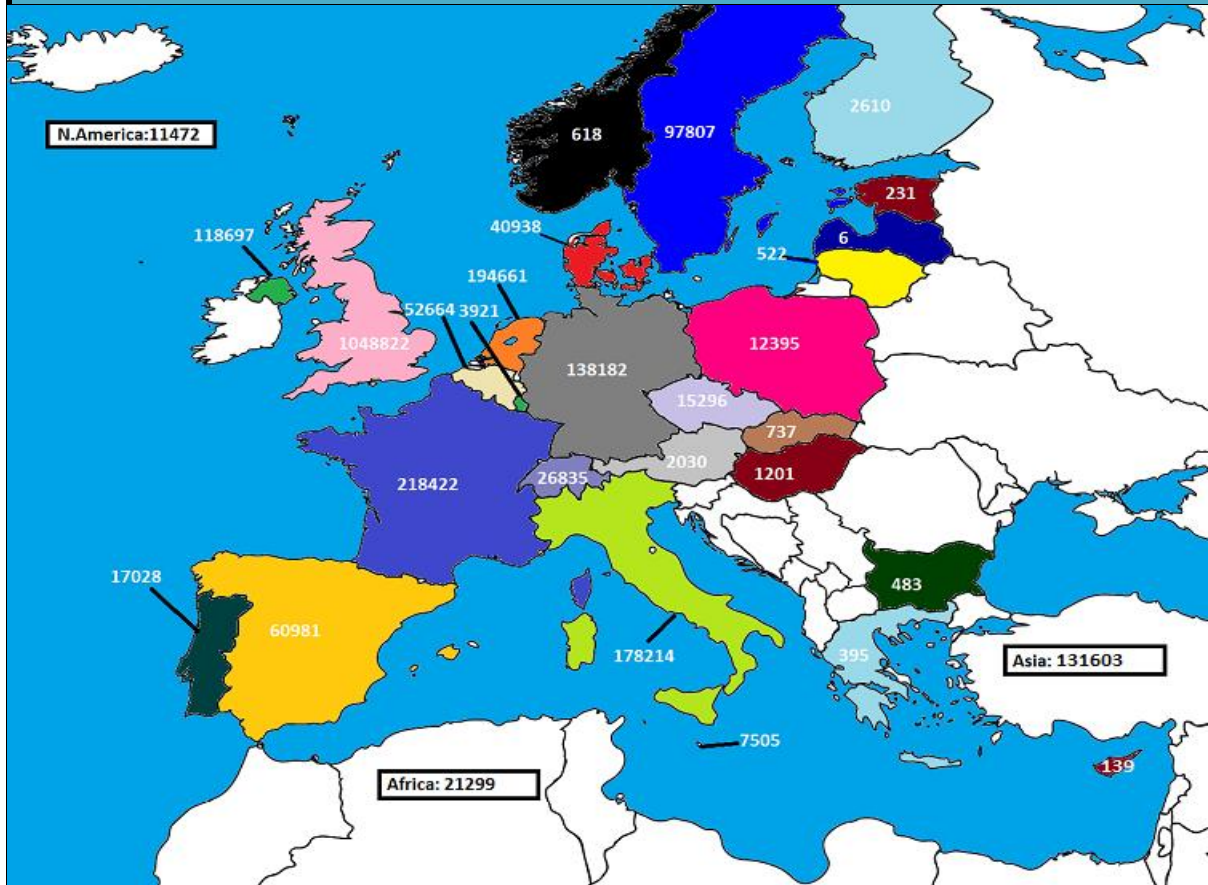




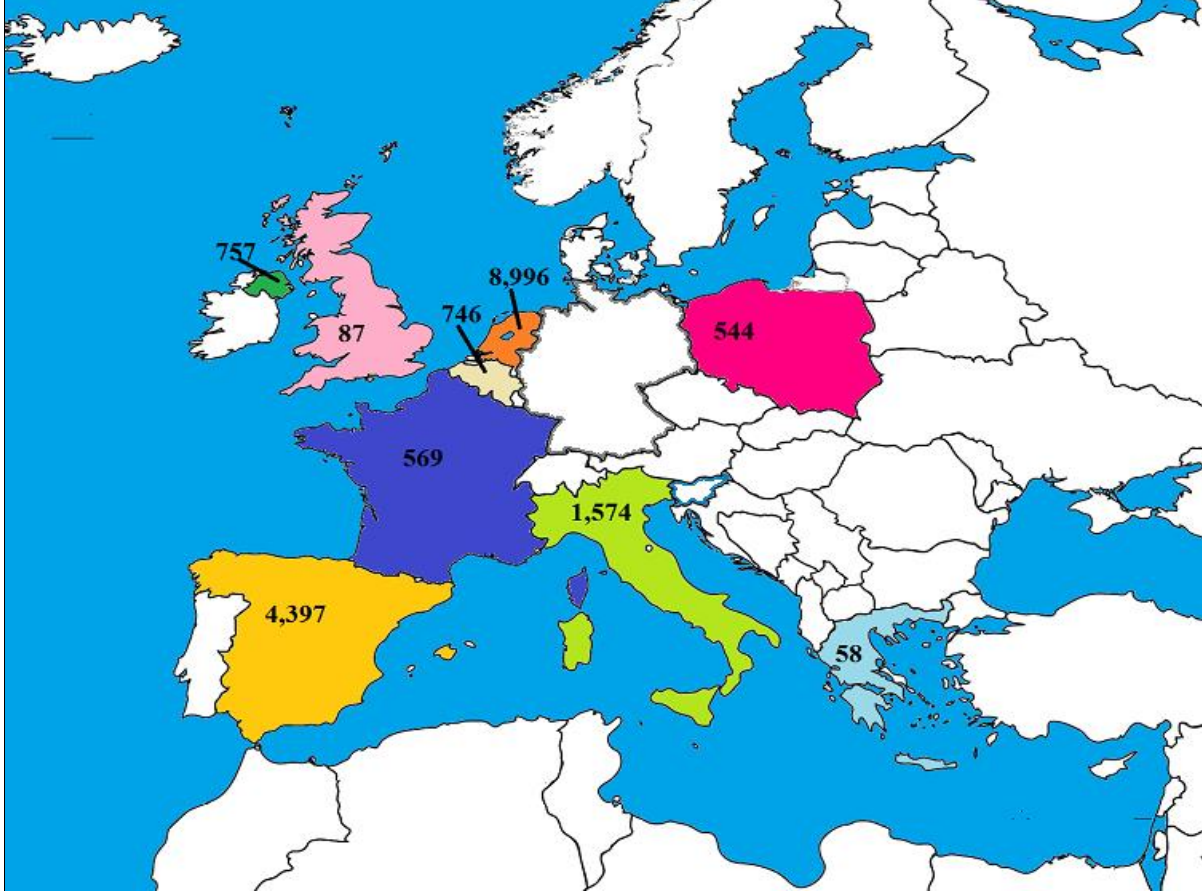
January 2019 Beef exports, €000 (CSO figures)



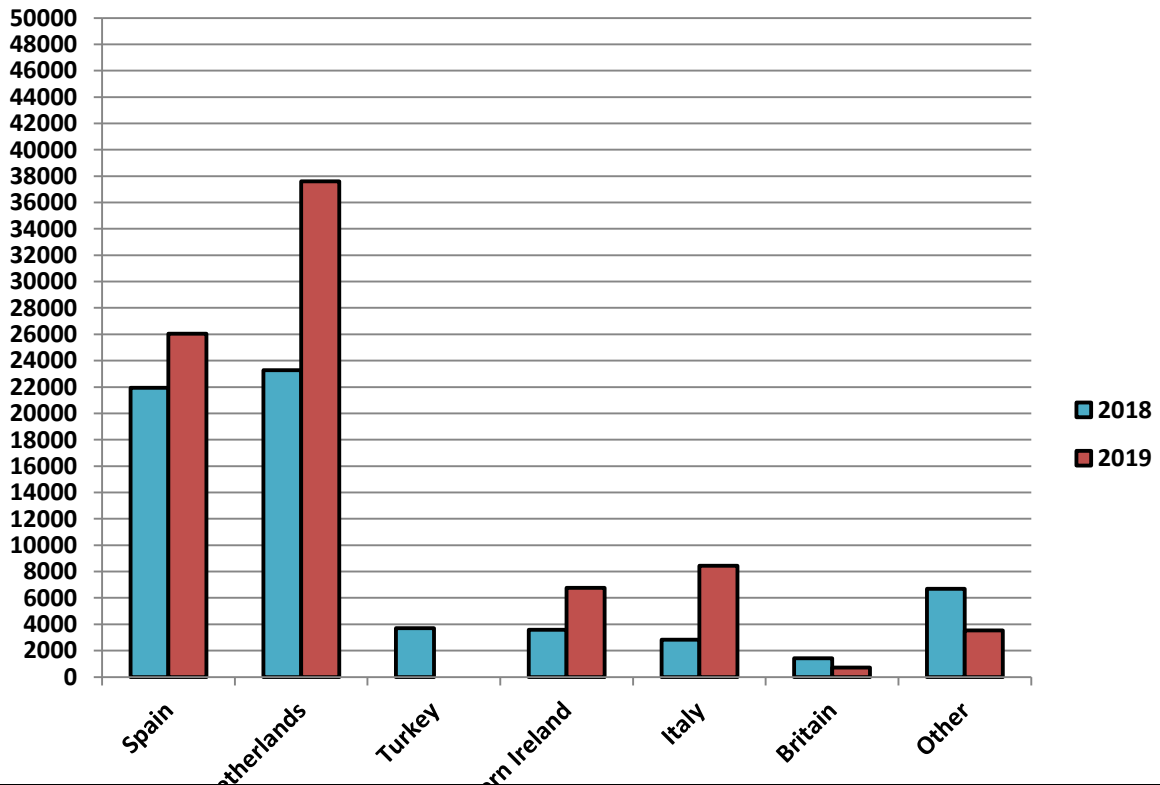
Cumulative beef exports to Dec 2017, €000 (CSO figures)

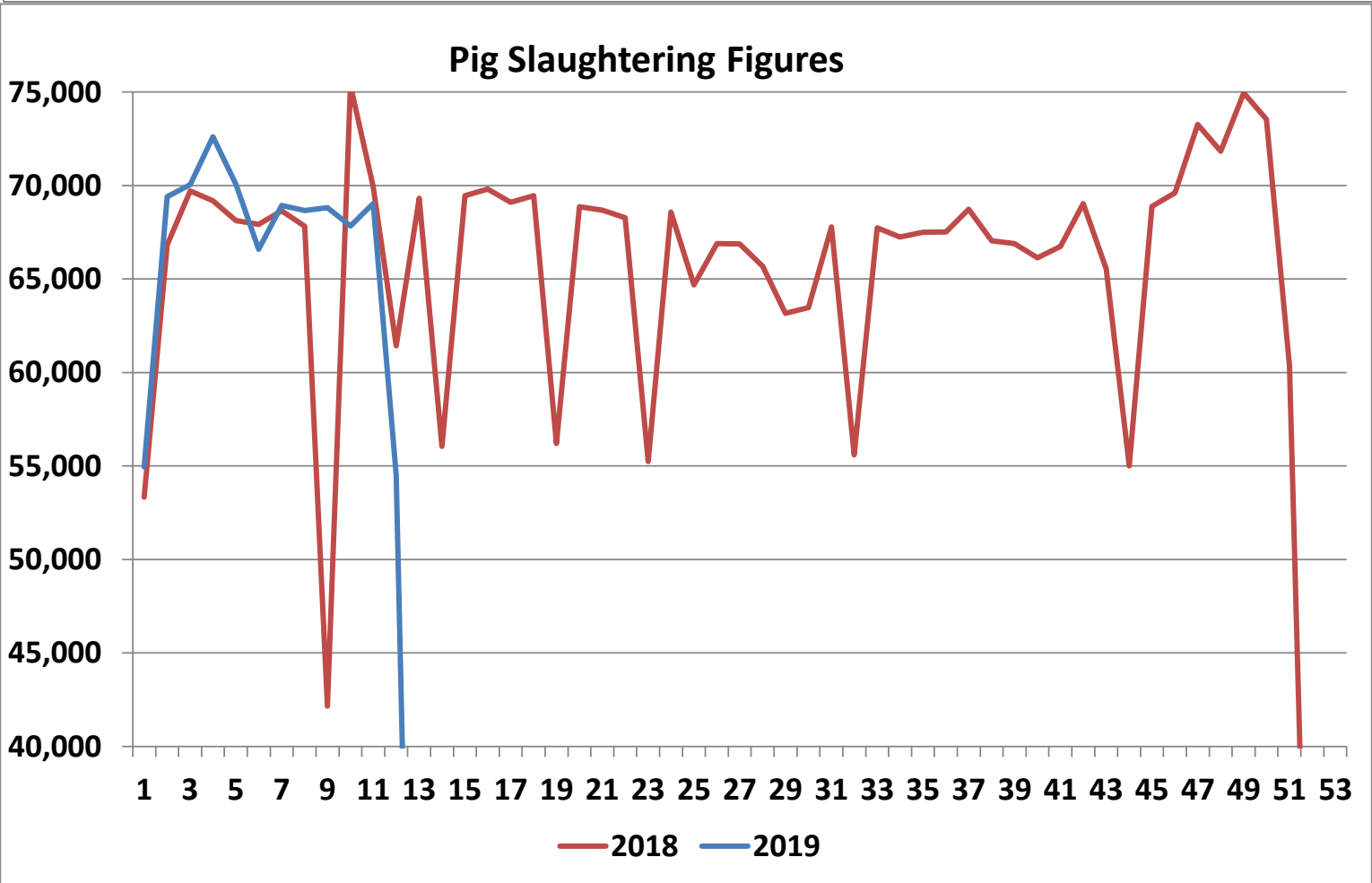
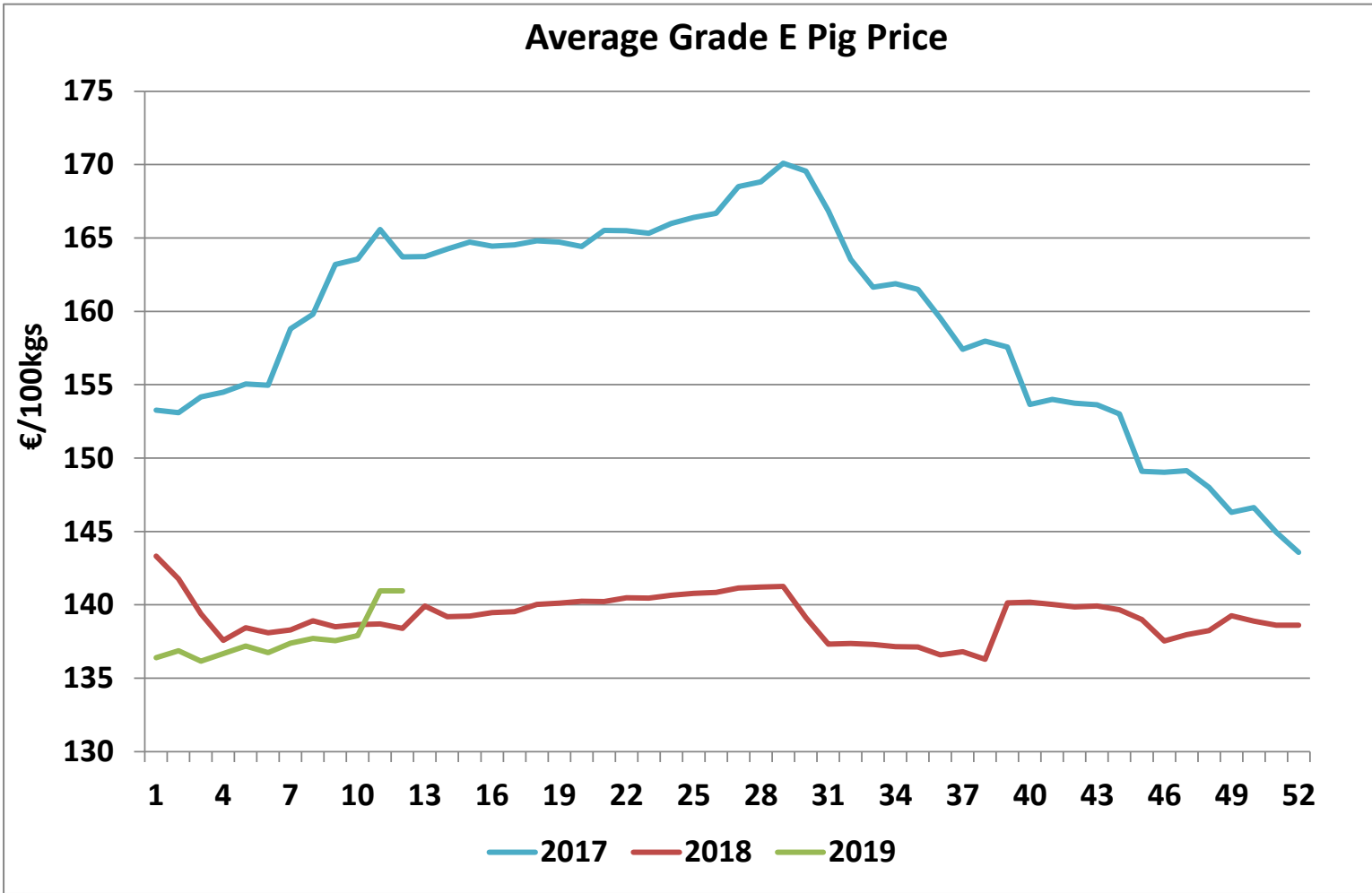


Cattle exported, w/c 18/03/19



Cumulative cattle export figures, 2019





Sheepmeat Information Week 12

18/03/2019 - 24/03/2019

Irish Prices €/100 kg	2019	2018	Change
Ave Factory Price	492.75	579.13	-14.9%
Ave Mart Price	414.47	470.61	-11.9%
National Ave Price	469.27	546.58	-14.1%
YTD Ave	479.64	478.08	0.3%

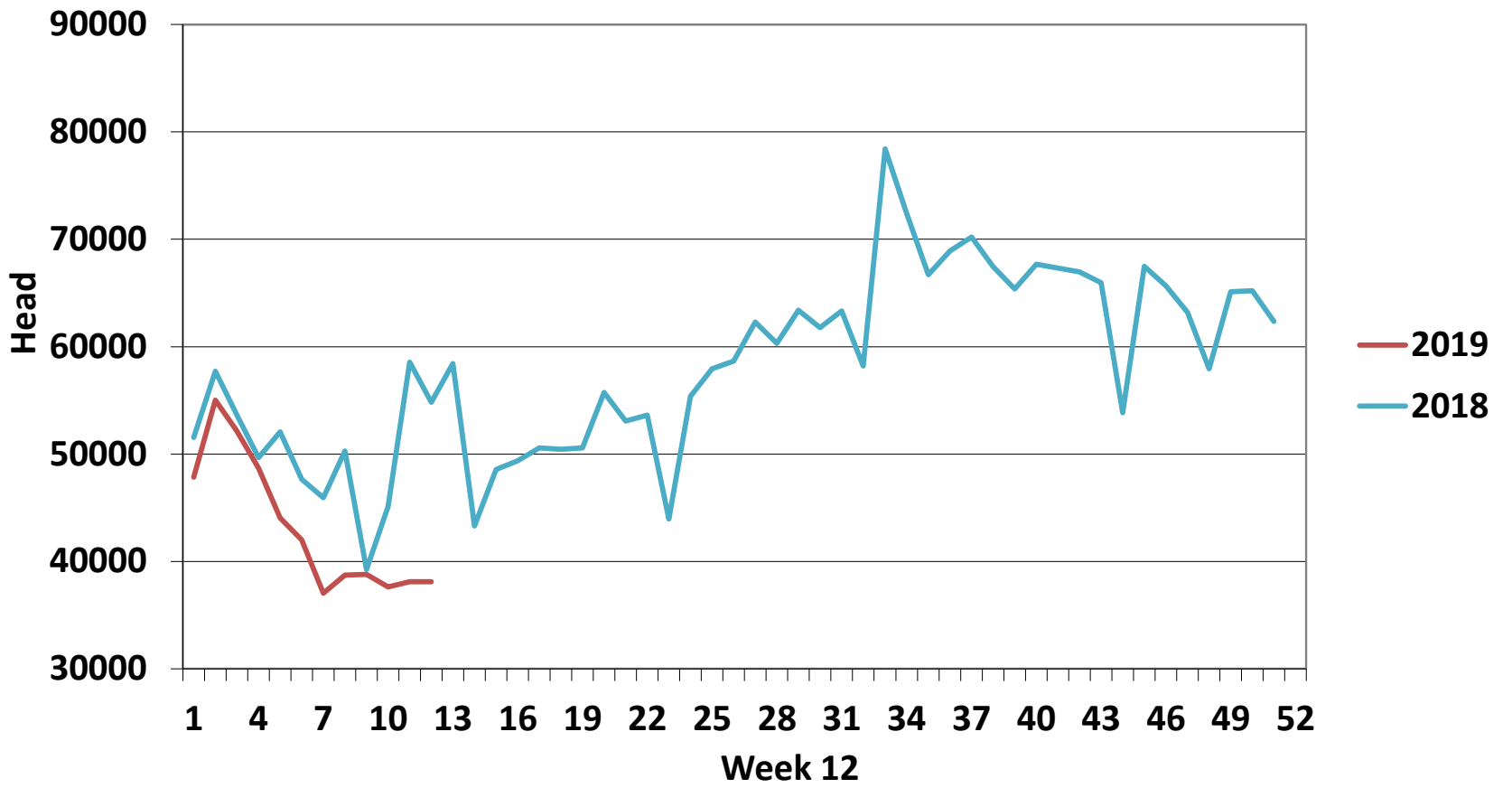
Slaughterings	2019	2018	Change
Weekly	38,098	54,822	-31%
YTD	518,101	606,274	-15%

EU Market Rates Heavy Lambs	€/100kg	% of Community Price
Belgium	529.5	103%
Denmark	458.5	89%
Germany	517.5	101%
Spain	527.8	103%
France	626.0	122%
Croatia	559.3	109%
Ireland	469.3	92%
Italy	501.0	98%
Cyprus	495.0	97%
Latvia	407.2	79%
Lithuania	361.1	70%
Netherlands	504.4	98%
Austria	566.0	110%
Poland	434.1	85%
Romania	246.5	48%
Finland	361.8	71%
Sweden	528.3	103%
Northern Ireland	468.6	91%
Great Britain	496.6	97%
United Kingdom	494.6	96%
Community	512.8	100%

REPORT ON SLAUGHTERING AT SHEEP EXPORT PREMISES
WEEK 12

CATEGORY	2019		2018		DIFFERENCE	
	Weekly	Cumulative	Weekly	Cumulative	Weekly	Cumulative
Lambs/Hoggets	32,966	418,408	46,615	512,783	-13,649	-94,375
Spring Lambs	60	12,908	1,953	2,325	-1,893	10,583
Ewes and Rams	5,072	86,783	6,254	91,128	-1,182	4,345
Light Lambs	-	2	-	38	0	36
TOTAL	38,098	518,101	54,822	606,274	-16,724	-88,173

Weekly Sheep Slaughtering



Ave. Price €/100 kg for Sheepmeat

