

Meat Market Report

25/03/19 - 31/03/19

Week

13



**An Roinn Talmhaíochta,
Bia agus Mara**

Department of Agriculture,
Food and the Marine

MARKET SUMMARY

Beef

Deadweight Prices c/100Kg (Including VAT)

	U3	U4	R3	R4	O3	O4	P+
Steers	392.7	389.3	383.4	383.8	364.9	369.0	341.3
Heifers	413.3	412.4	399.1	398.5	378.2	380.0	346.3
Young Bulls	364.8	359.6	355.7	352.2	334.7	335.3	321.9
Cows			310.6	309.2	282.5	282.8	271.3

Liveweight Prices

*Bull Calf Average Price	€121.8 per head (Excluding VAT)
**Young Store Average Price	€217.0 per 100kg (Excluding VAT)
***Yearling (male & female) Price	€194.0 per 100kg (Excluding VAT)

* Aged 8-28 days ** Aged 180-364 days, Male & Female ***age 365-730 days

Slaughterings

35,068 cattle slaughtered this week, of which steers were 11,947 (34%), heifers 10,941 (31%), young bulls 4,744 (13%) and cows 6,548 (19%). Total YTD slaughter is 459,325 compared to 427,905 in 2018, a 7% increase.

Live Trade

17,728 cattle were exported in the week commencing 18/03/2019 16,971 to EU (Except NI). Live exports for 2019 amount to 88,659 compared to 67,951 in 2018, up 30% on 2018 levels.

*This data is provisional and subject to revision.

CONTENTS:

Page 2: Market Summary Beef
 Page 3: Market Summary Other Meats
 Page 4: Beef Price and Slaughter Summary
 Page 5: Comparative Beef Prices
 Page 6: Steer and Young Bull Price
 Page 7: Heifer and Cow Graphs
 Page 8: Price and Slaughter Graphs
 Page 9: Liveweight Beef Graphs

Page 10: Beef Export Maps
 Page 11: Beef Export Info
 Page 12: Pig price and slaughter graphs
 Page 13: Sheep prices and slaughter
 Page 15: Sheep price and slaughter graphs

MARKET SUMMARY

Pigmeat

Grade E Pig
Prices (Ex.
VAT)

The Grade E Pig price for week commencing 25/03/2019 was €140.67 per 100Kg. in comparison to €139.93 in the same week last year, which represents a 0.5% increase.

Slaughtering

65,505 pigs were slaughtered in week 13 of which 1,873 were sows. The cumulative figure for pig slaughterings in 2019 is 867,012 which is up 2% against the same point last year.

Sheepmeat

Sheepmeat
Prices (Ex.
VAT)

The national average price for the week commencing 25/03/2019 was €485.07 per 100Kg, a decrease of 11% over the same week last year.

Slaughtering

43,792 sheep were slaughtered at sheep export premises the week commencing 25/03/2019, compared to 58,440 in the same week of 2018. Sheep slaughterings for 2019 are 15% down on 2018 at 561,893 head.

Live Trade

Total live exports to European Countries stood at 20,769 head to the end of 2018.

Poultry

Slaughtering

Cumulative poultry slaughterings for 2019* stand at 26,480,093 birds at the end of week 13, up 10% compared to the same period last year.

*Latest Figures are provisional and subject to change

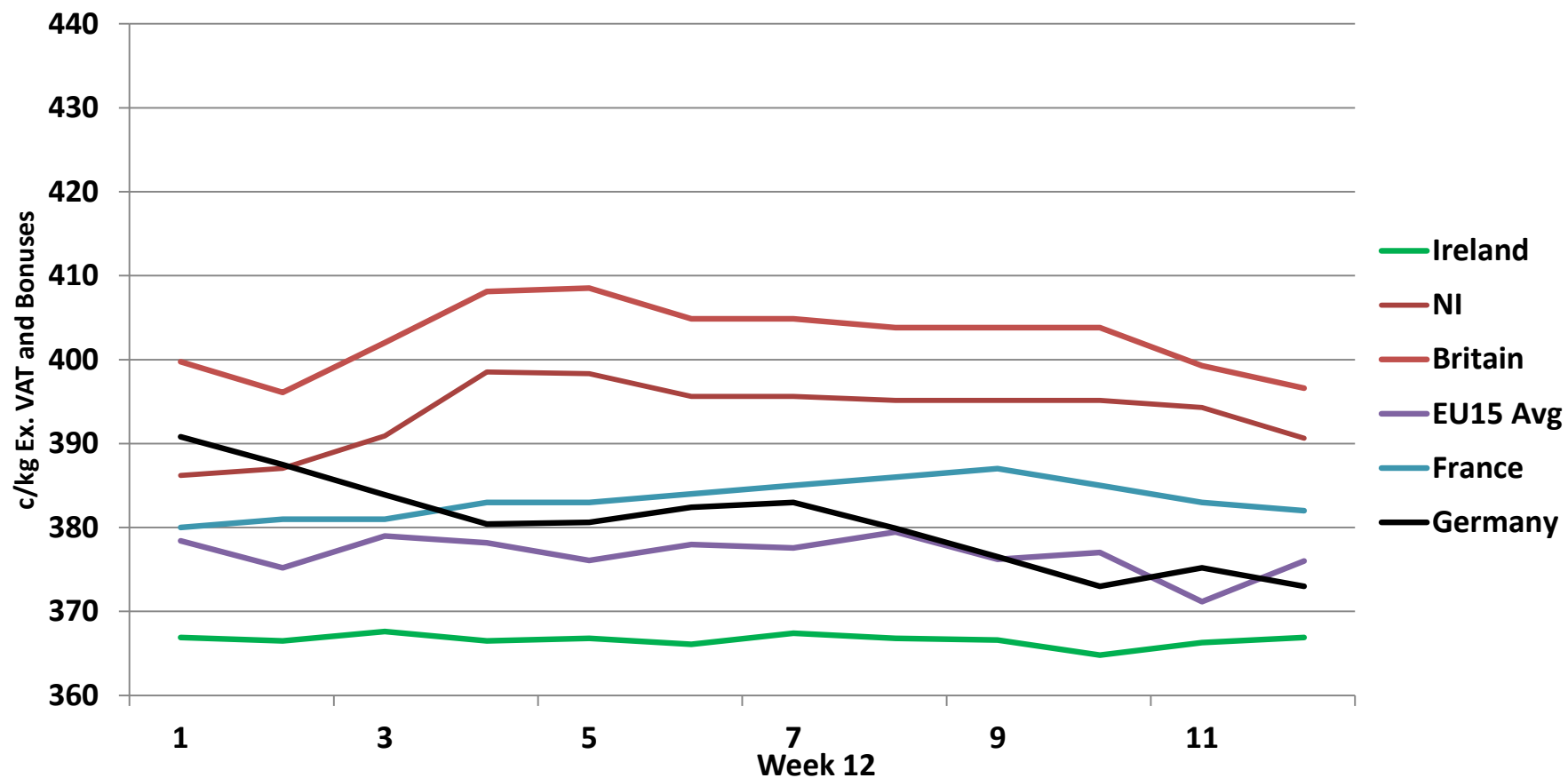
Dead Weight Prices	W/C	W/C	Same week 2018	% change prev week	% change 2018
	25/03/19	18/03/19	26/03/18		
Steers (R3) (c/kg)	363.7	366.5	391.2	-0.7%	-7.0%
Heifers (R3) (c/kg)	378.6	379.3	403.9	-0.2%	-6.3%
Young Bulls (U3) (c/kg)	346.1	348.8	393.9	-0.8%	-12.1%
Cows (04) (c/kg)	268.3	268.8	330.6	-0.2%	-18.8%

Live Weight Prices	W/C	W/C	Same week 2017	% change previous week	% change 2018
	25/03/19	18/03/19	26/03/18		
Yearlings (Male) (Aged 365 - 730 days) - (€/100Kg)	190	186	212	2.2%	-10.4%
Yearlings (Female) (Aged 365 - 730 days) - (€/100Kg)	197	199	214	-1.0%	-7.9%
Young Stores (Male & Female) (Aged 180 - 364 days) - (€/100Kg)	217	215	237	0.9%	-8.4%
Bull Calf (€/head) Dairy	84.9	64.5	114.3	31.6%	-25.7%
Bull Calf (€/head) Beef	158.7	161.8	197.2	-1.9%	-19.5%
Bull Calf (€/head) Average	121.8	113.2	155.7	7.6%	-21.8%

Slaughter Figures	% of weekly figures	W/C	Same week 2018	Year to Date		Change 2019 v 2018	
		25-Mar-19		2019	2018	Head	%
Steers	34.1%	11,947	11,850	146,577	144,509	2,068	1.4%
Cows	18.7%	6,548	7,414	91,493	87,401	4,092	4.7%
Heifers	31.2%	10,941	9,400	141,092	126,064	15,028	11.9%
Young Bulls	13.5%	4,744	3,477	73,154	62,943	10,211	16.2%
Mature Bulls	2.5%	888	672	7,004	6,988	16	0.2%
Total	100%	35,068	32,813	459,320	427,905	31,415	7.3%

Live Exports	W/C	Same week	W/C	Year to Date		Change 2019 v 2018	
	18-Mar-19	2018	11-Mar-19	2019	2018	Head	%
Northern Ireland	757	360	705	6,888	3,579	3,309	92%
EU Except NI	16,971	11,799	11,894	81,568	59,880	21,688	36%
Third Countries	0	0	0	203	4,492	-4,289	-
Total	17,728	12,159	12,599	88,659	67,951	20,708	30%

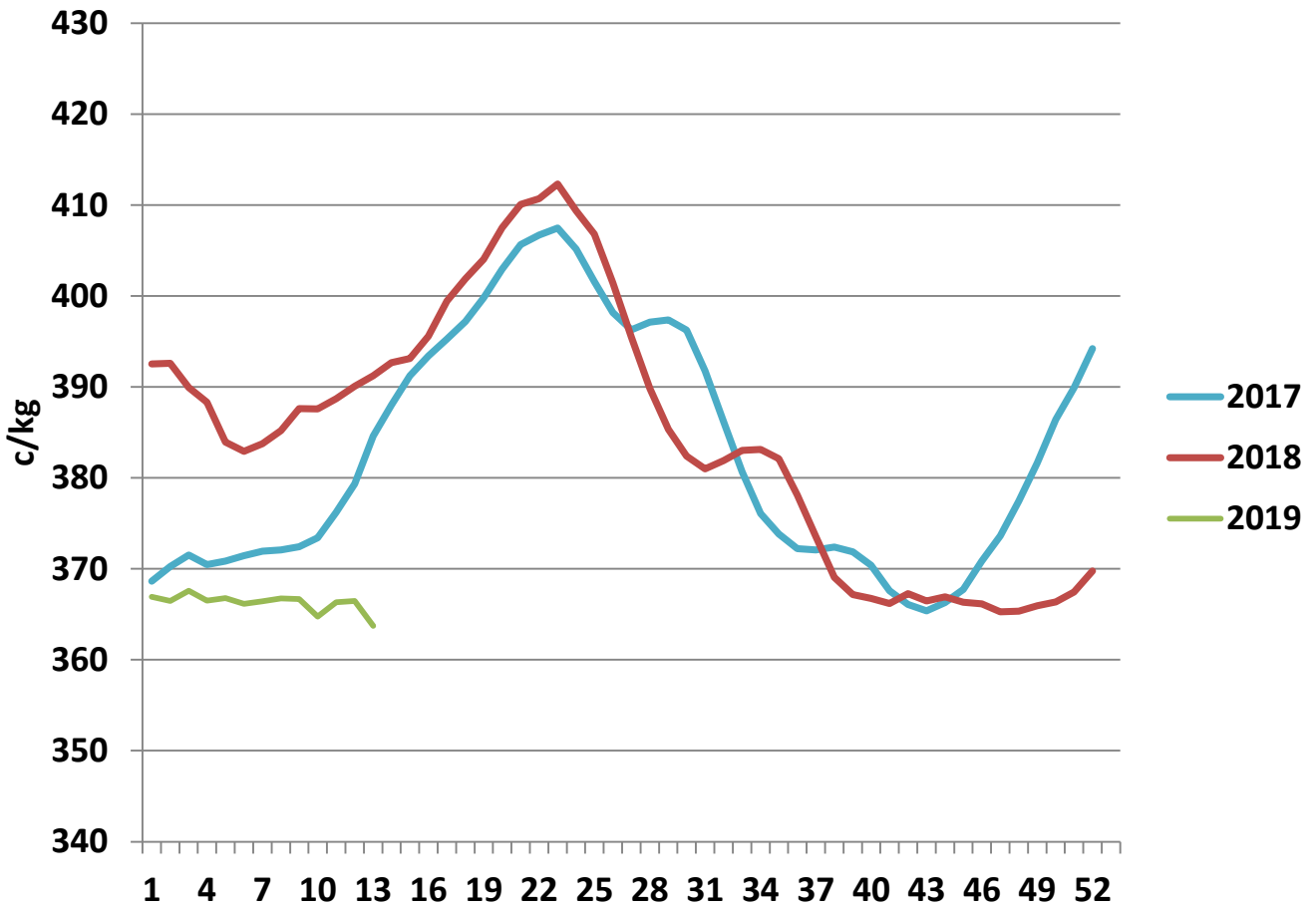
Irish Deadweight Cattle Prices vs Selected Other Markets, 2019



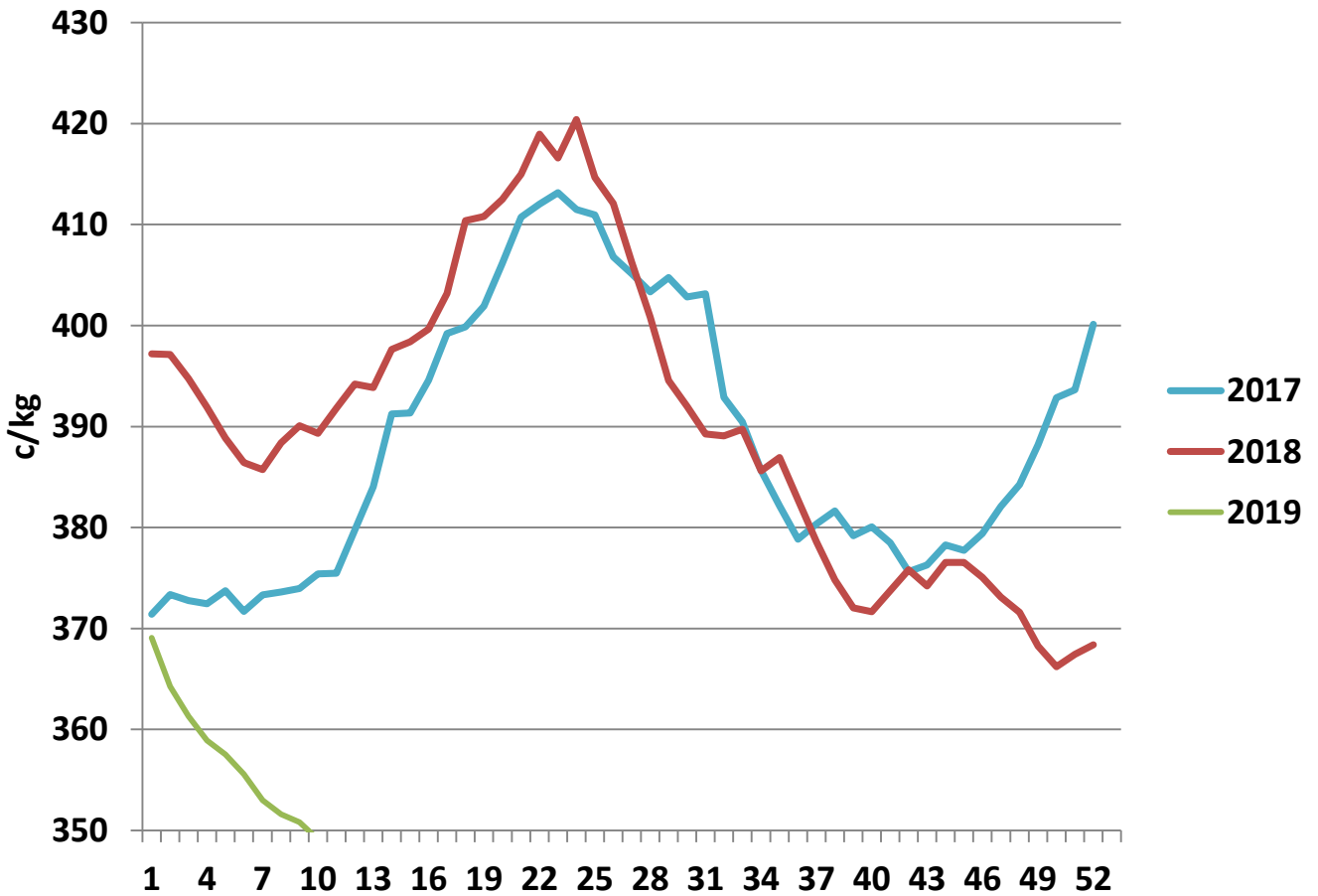
Livestock Pricing

	Ireland	NI	Britain	EU 15 Average	France	Germany
W/C 18/03/19	366.9	390.65	396.6	376	382	373

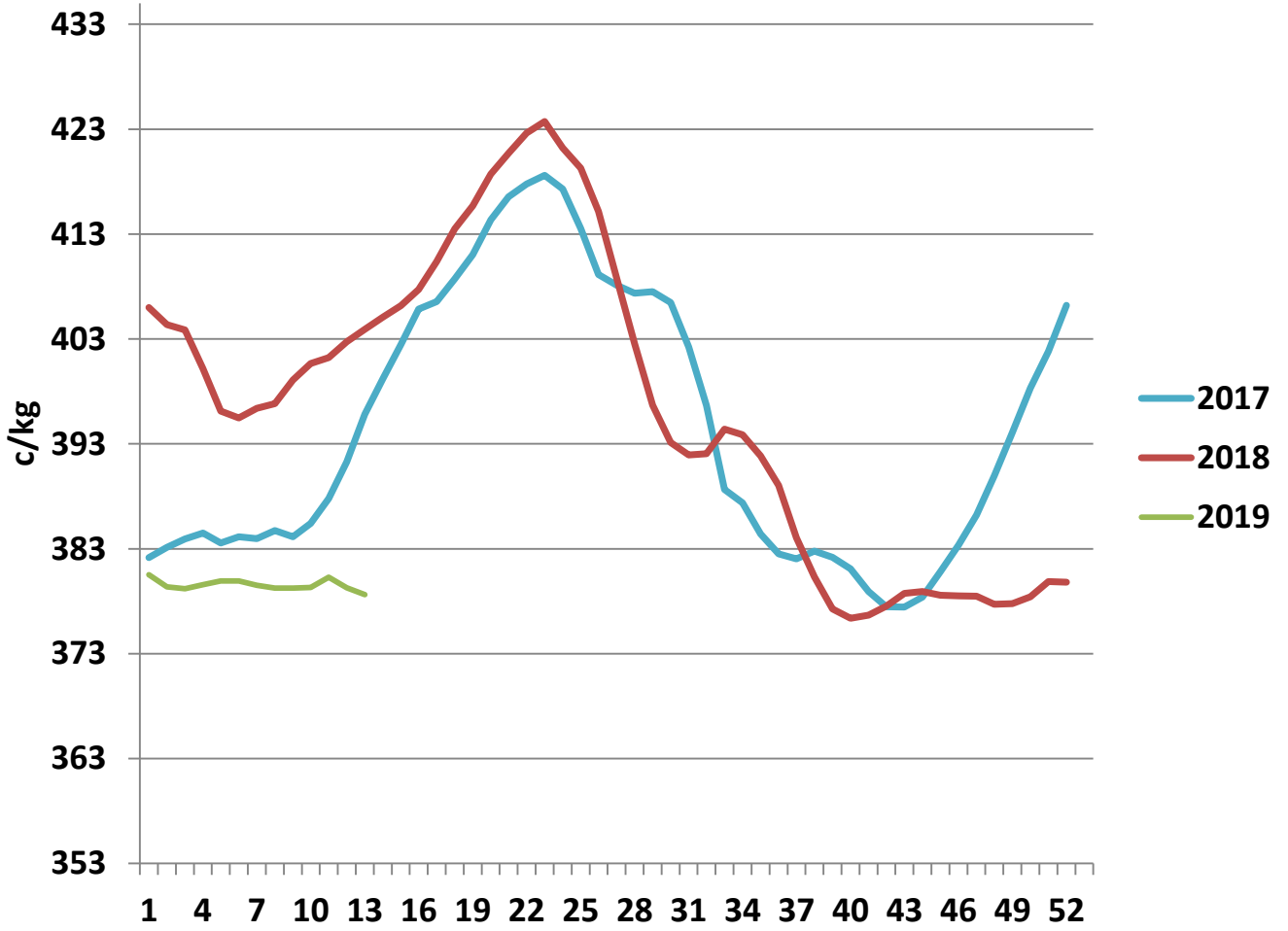
R3 Steer prices ex. VAT



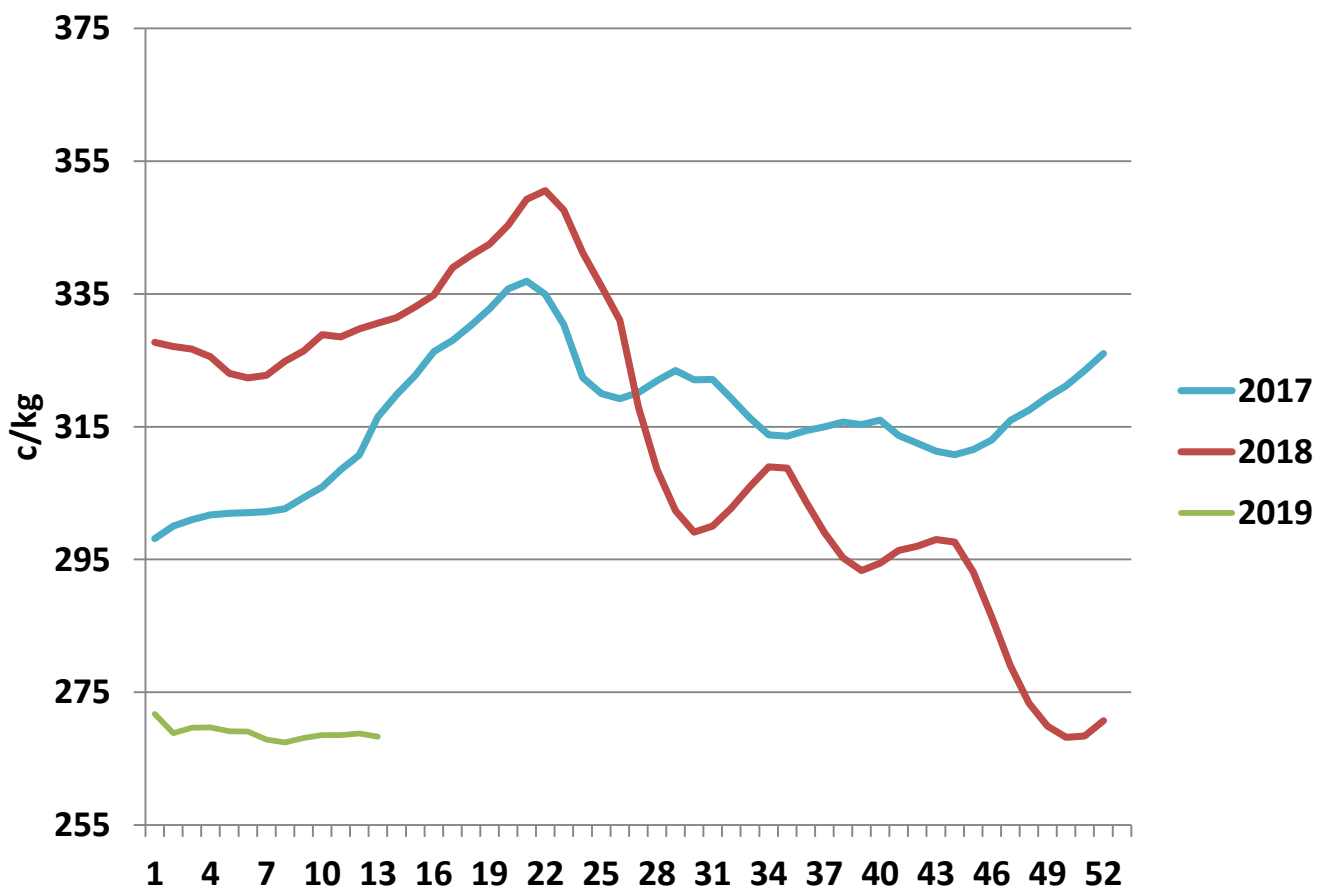
U3 Young Bull prices ex. VAT

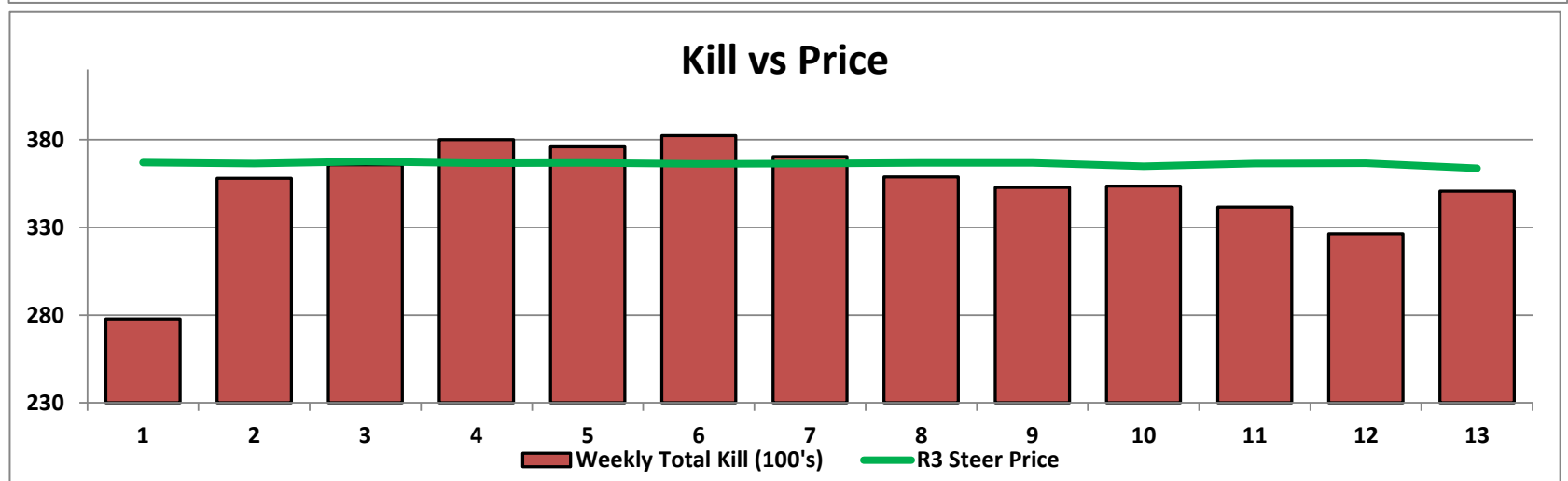
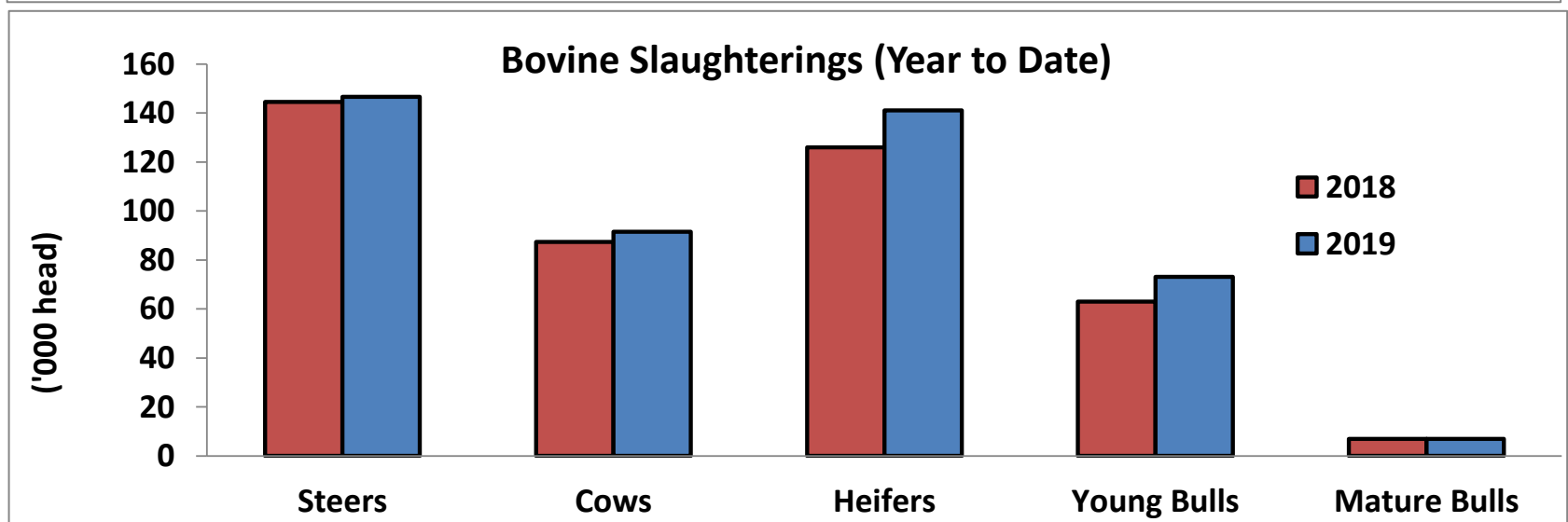
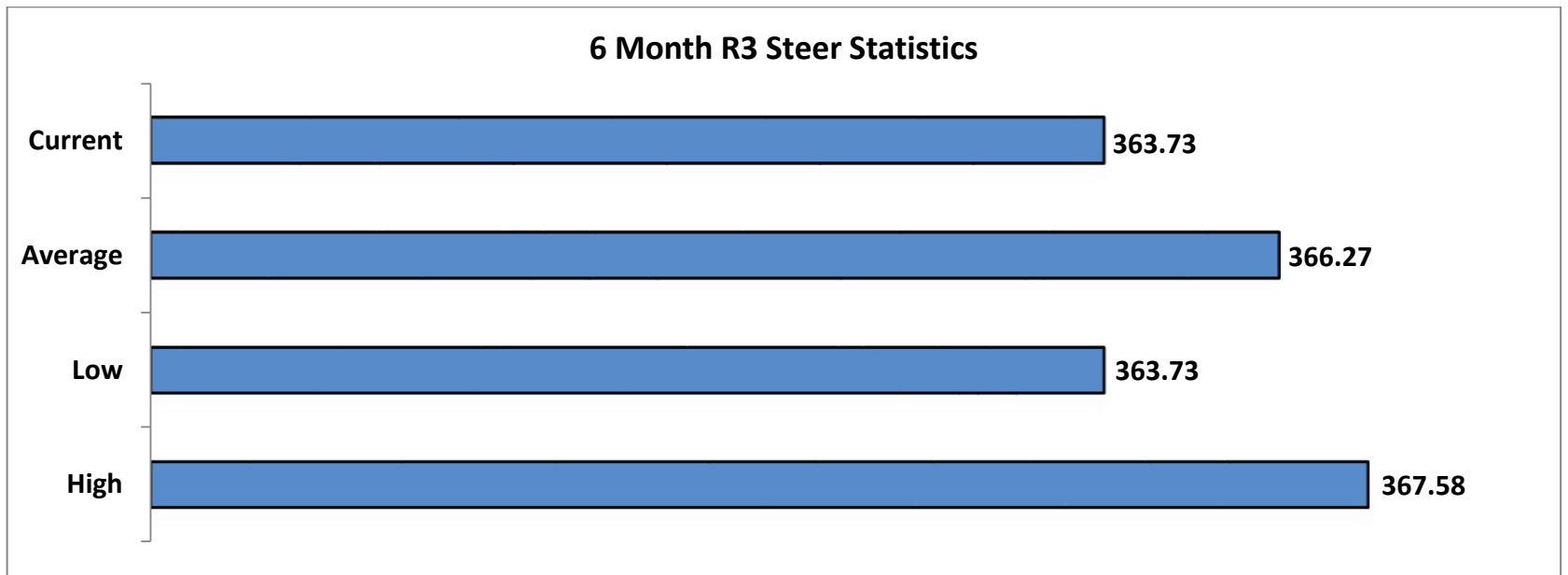


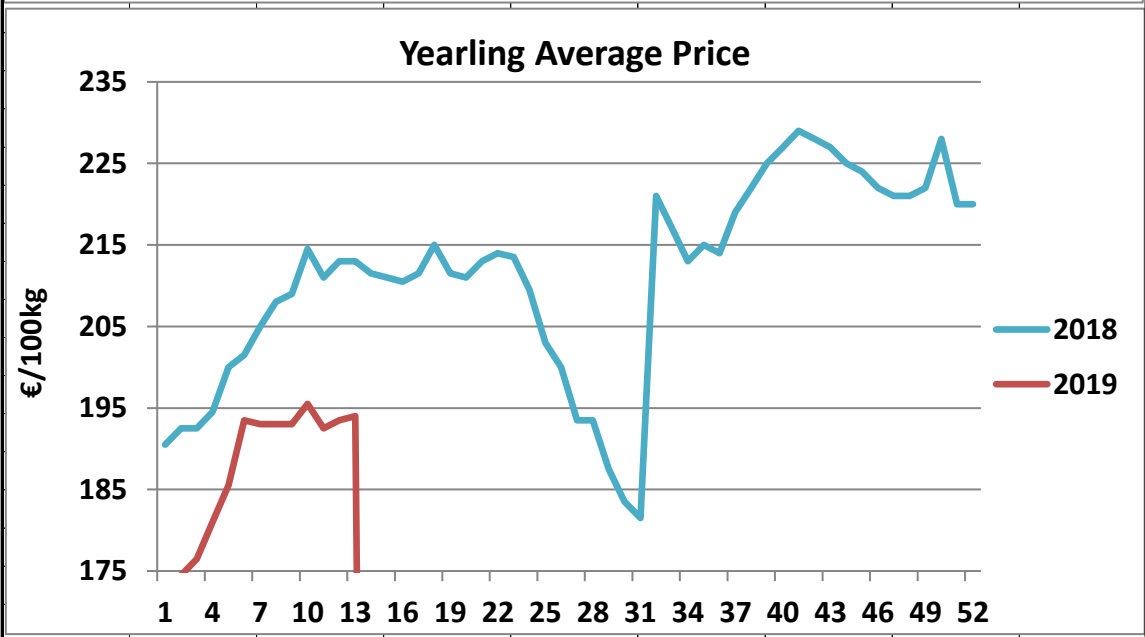
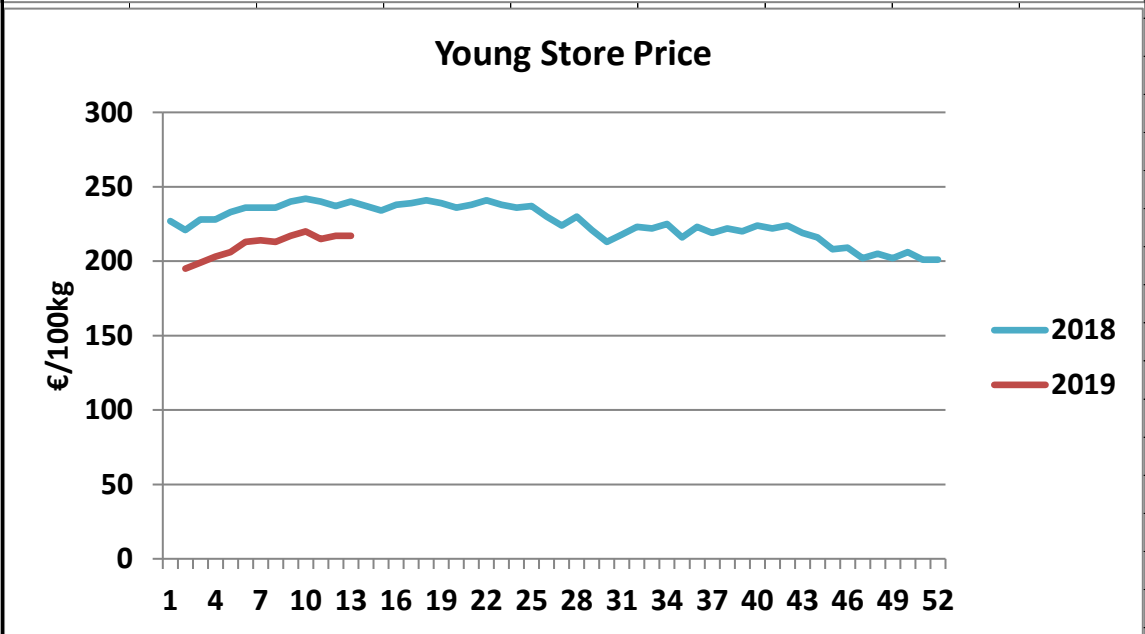
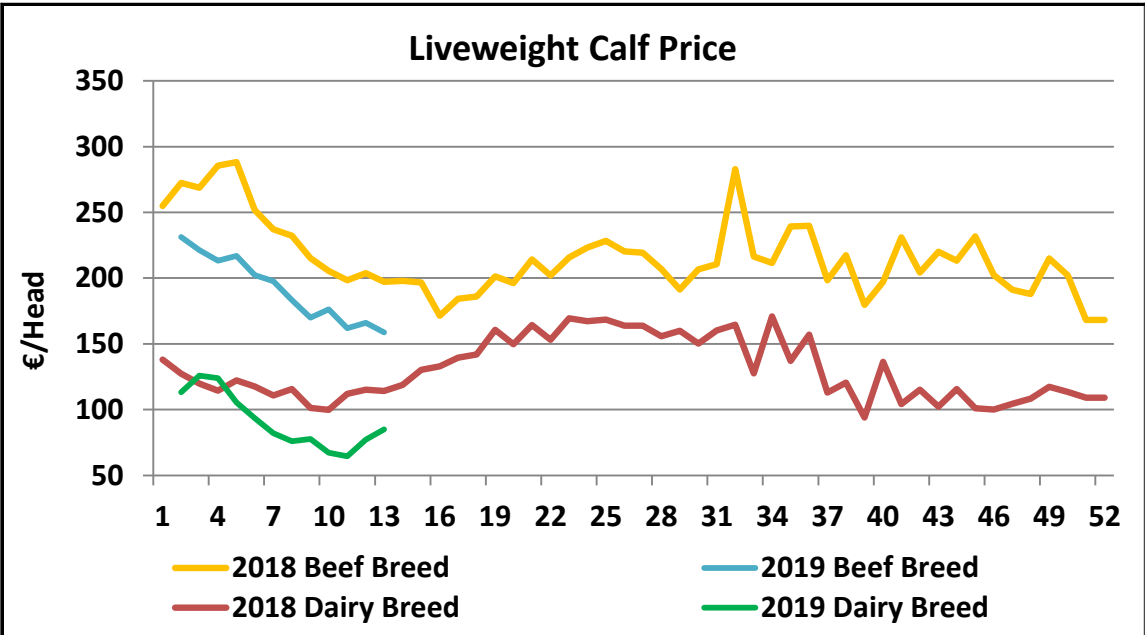
R3 Heifer prices ex. VAT



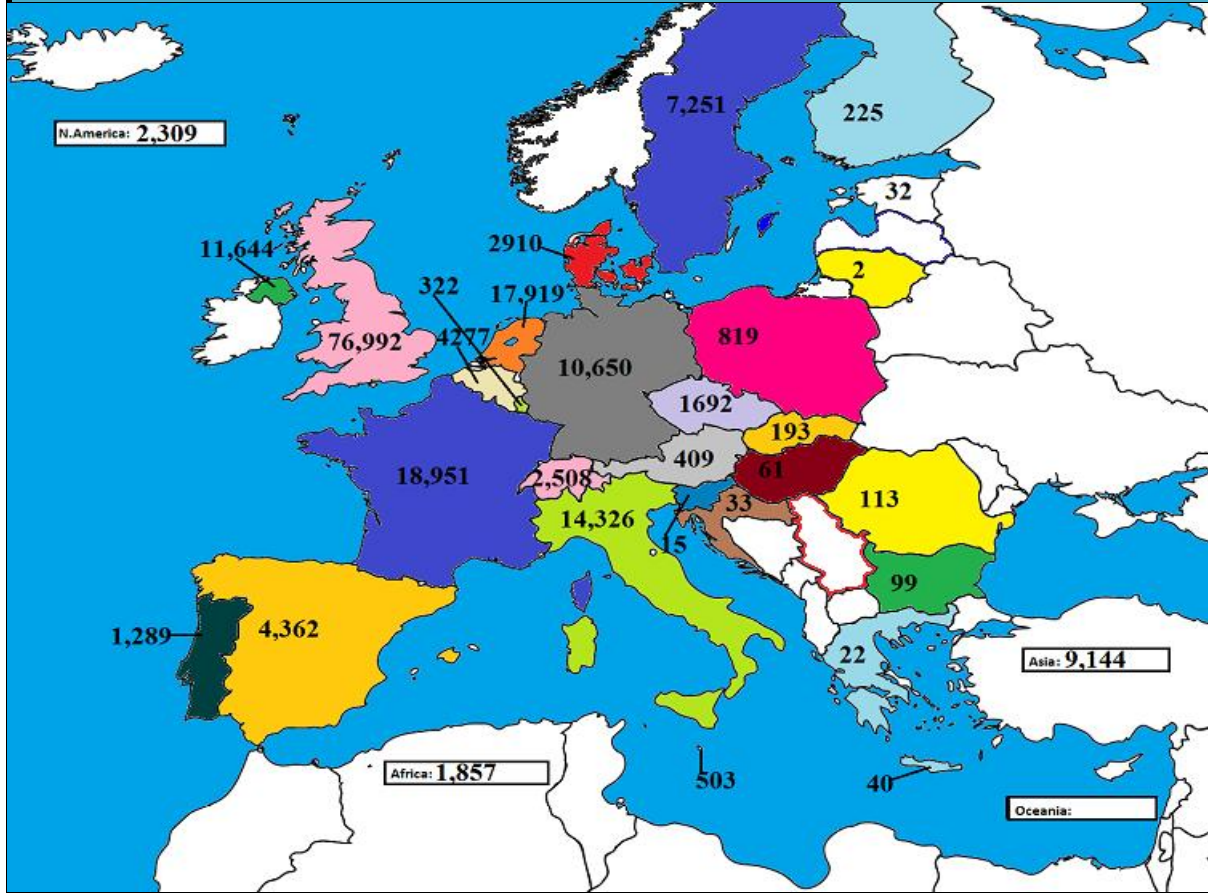
O4 Cow prices ex. VAT



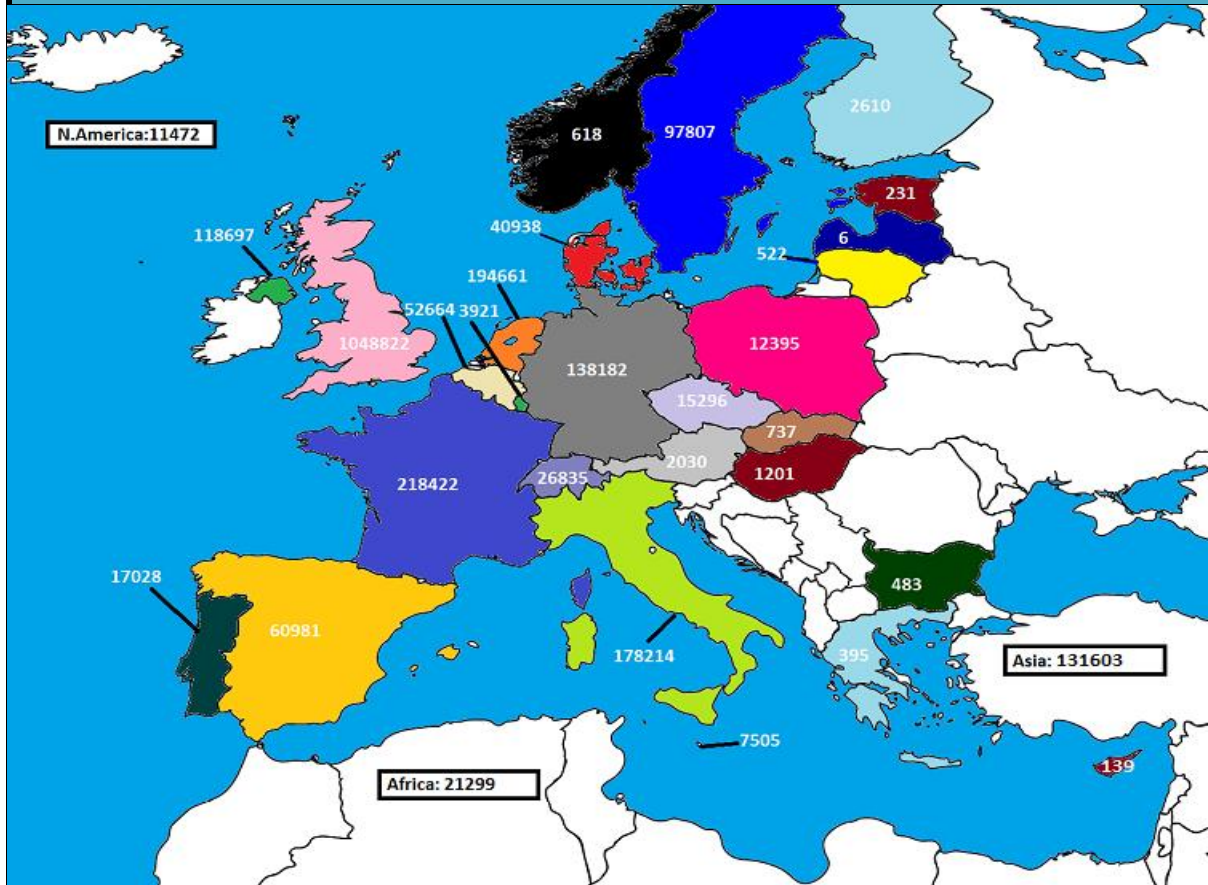




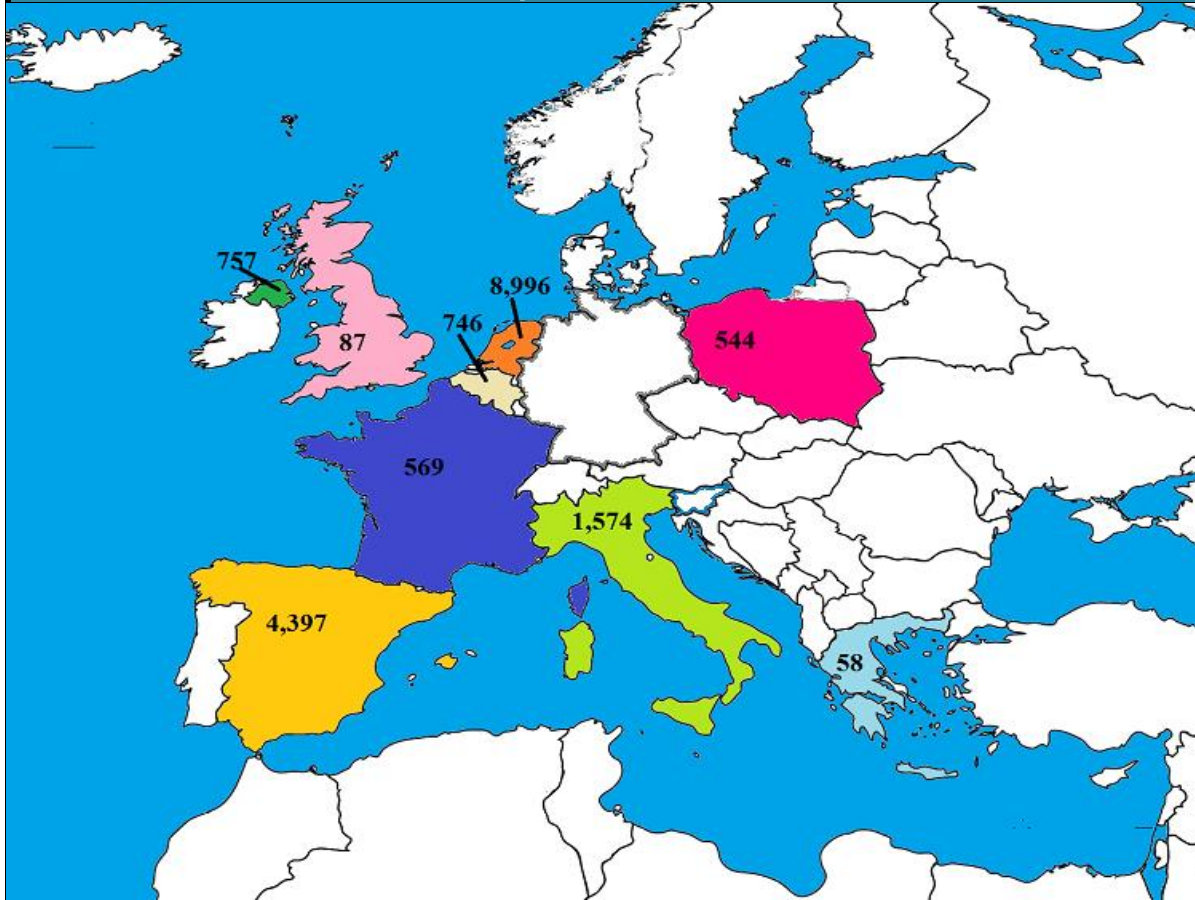
January 2019 Beef exports, €000 (CSO figures)



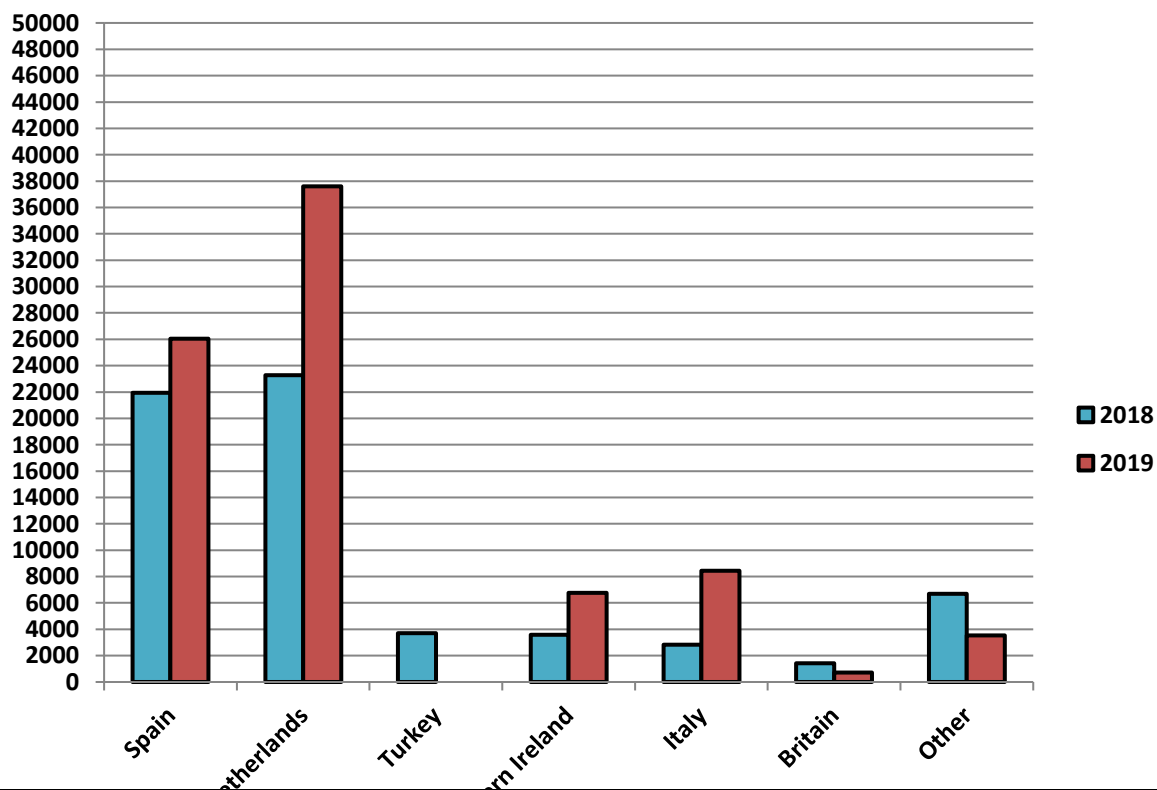
Cumulative beef exports to Dec 2017, €000 (CSO figures)

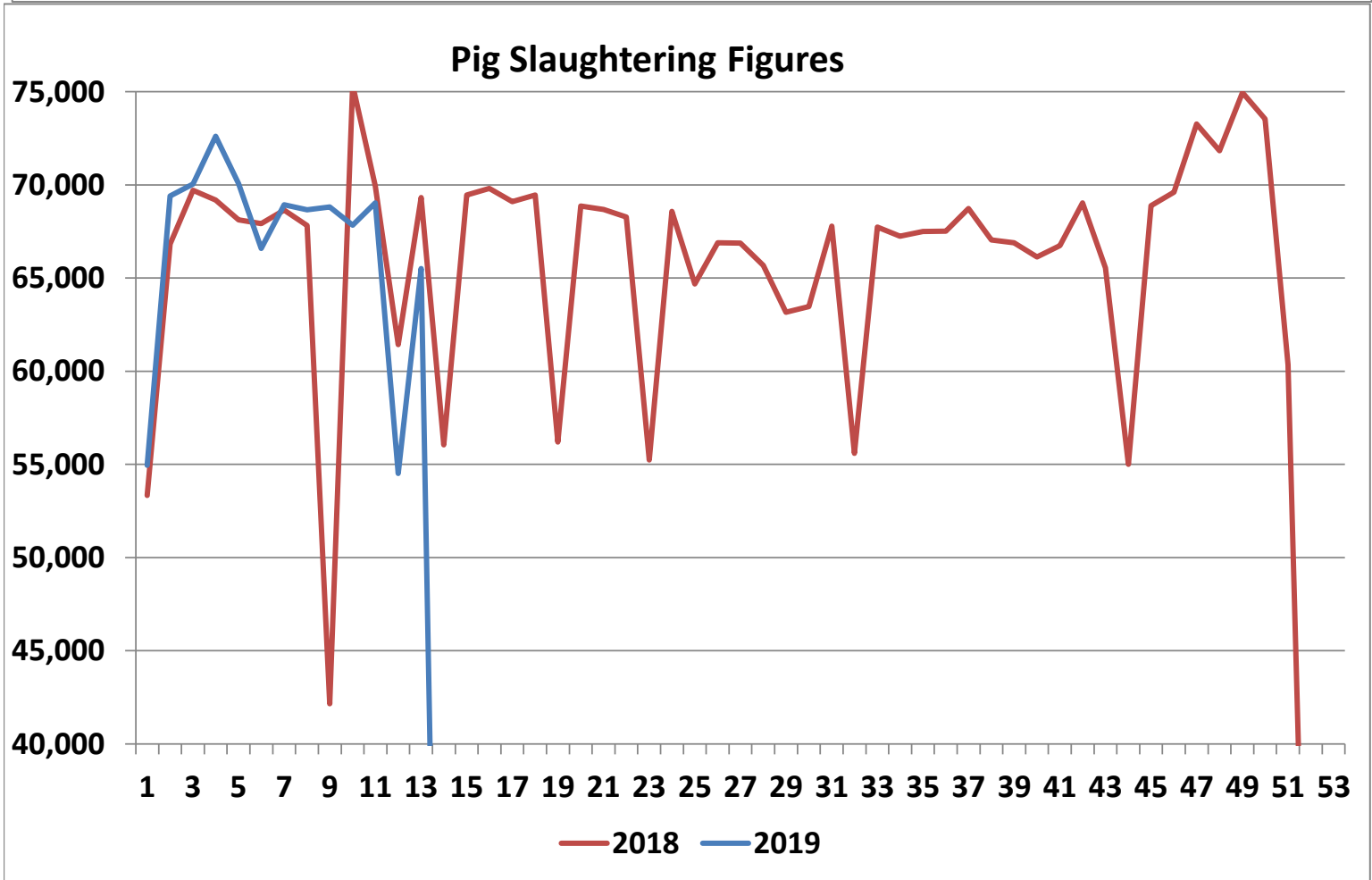
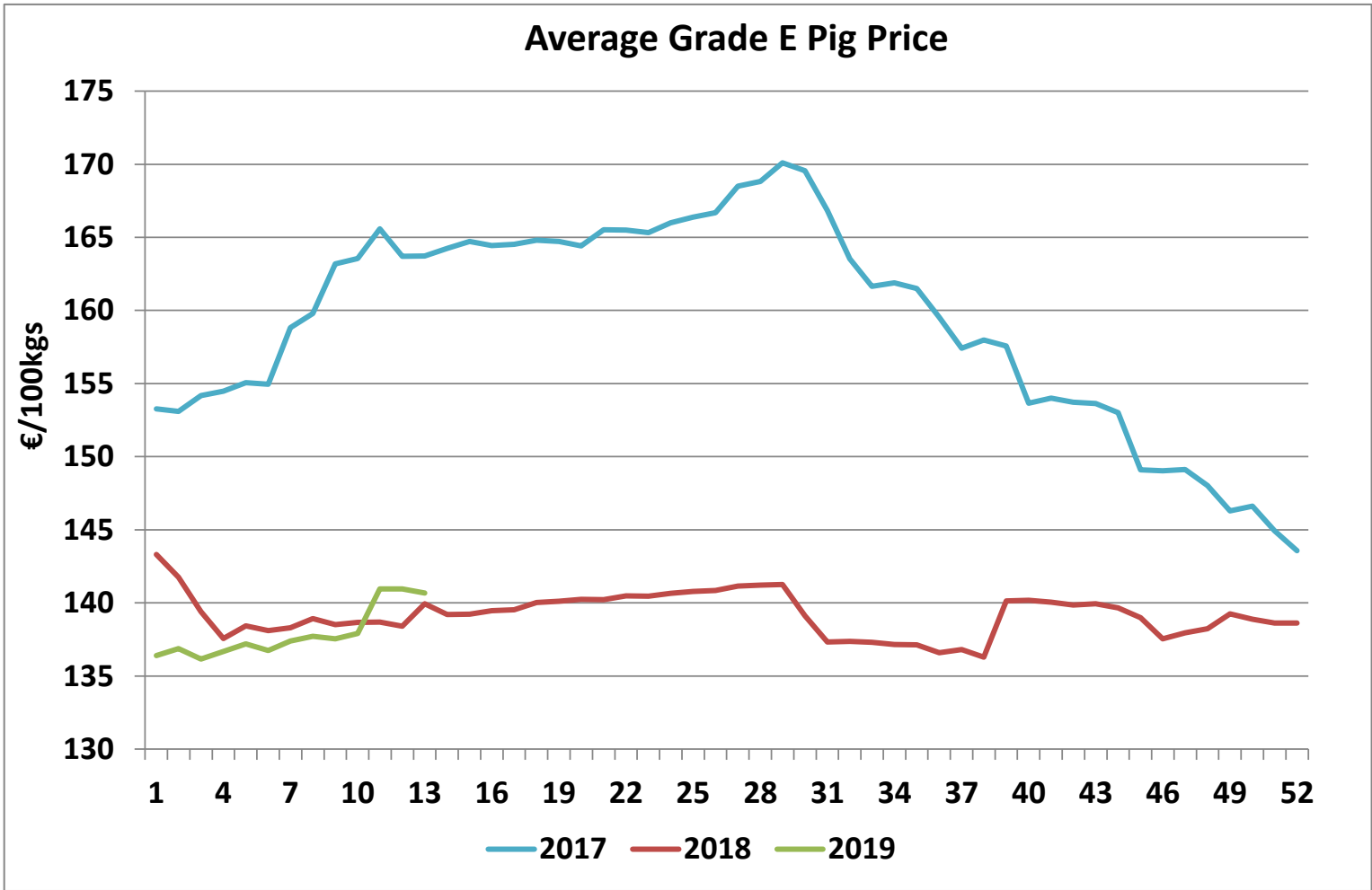


Cattle exported, w/c 18/03/19



Cumulative cattle export figures, 2019





Sheepmeat Information Week 13

25/03/2019 - 31/03/2019

Irish Prices €/100 kg	2019	2018	Change
Ave Factory Price	499.14	571.21	-12.6%
Ave Mart Price	452.24	483.55	-6.5%
National Ave Price	485.07	544.91	-11.0%
YTD Ave	480.06	483.22	-0.7%

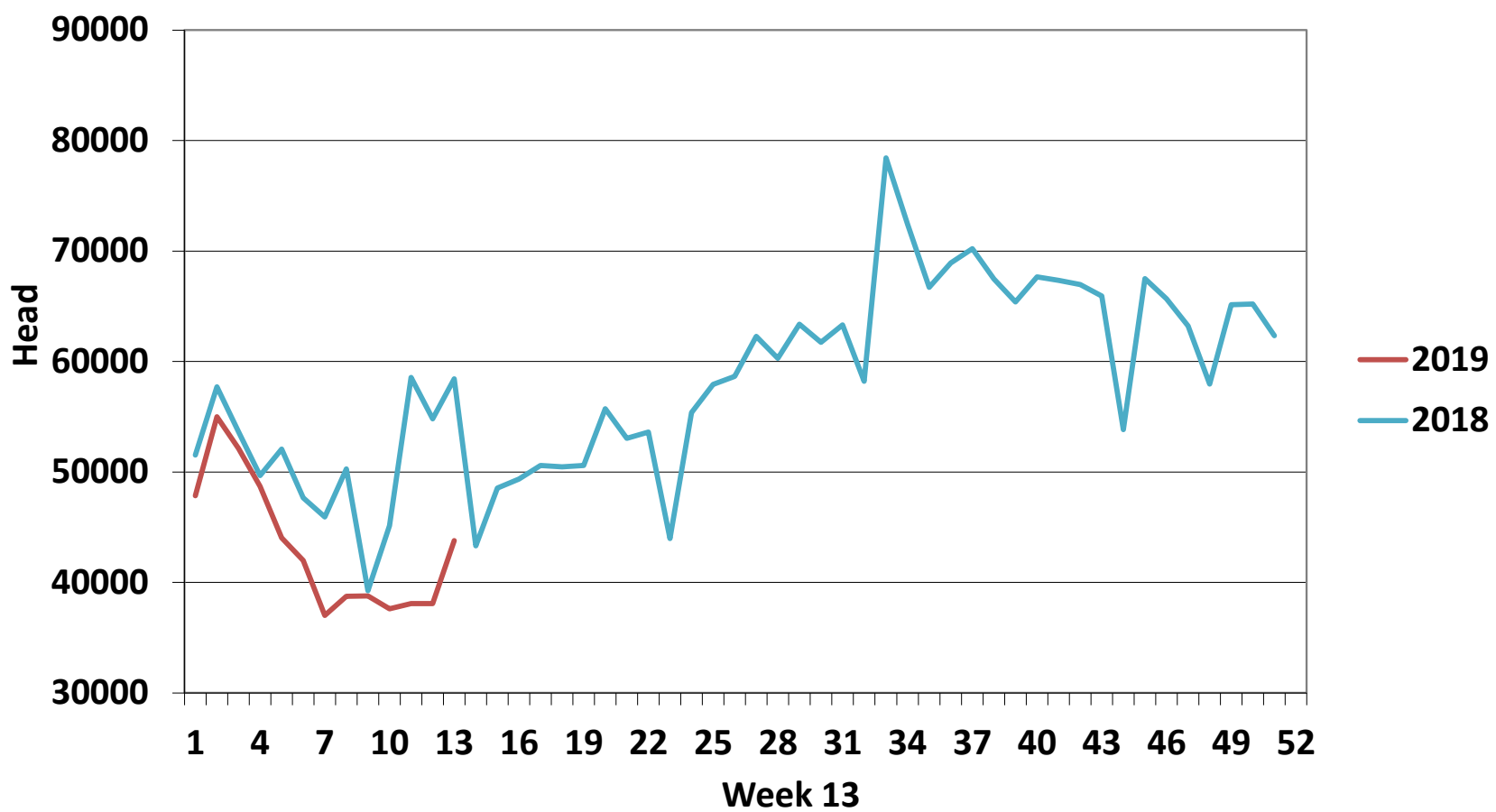
Slaughterings	2019	2018	Change
Weekly	43,792	58,440	-25%
YTD	561,893	664,714	-15%

EU Market Rates Heavy Lambs	€/100kg	% of Community Price
Belgium	529.5	103%
Denmark	458.5	89%
Germany	517.5	101%
Spain	527.8	103%
France	626.0	122%
Croatia	559.3	109%
Ireland	469.3	92%
Italy	501.0	98%
Cyprus	495.0	97%
Latvia	407.2	79%
Lithuania	361.1	70%
Netherlands	504.4	98%
Austria	566.0	110%
Poland	434.1	85%
Romania	246.5	48%
Finland	361.8	71%
Sweden	528.3	103%
Northern Ireland	468.6	91%
Great Britain	496.6	97%
United Kingdom	494.6	96%
Community	512.8	100%

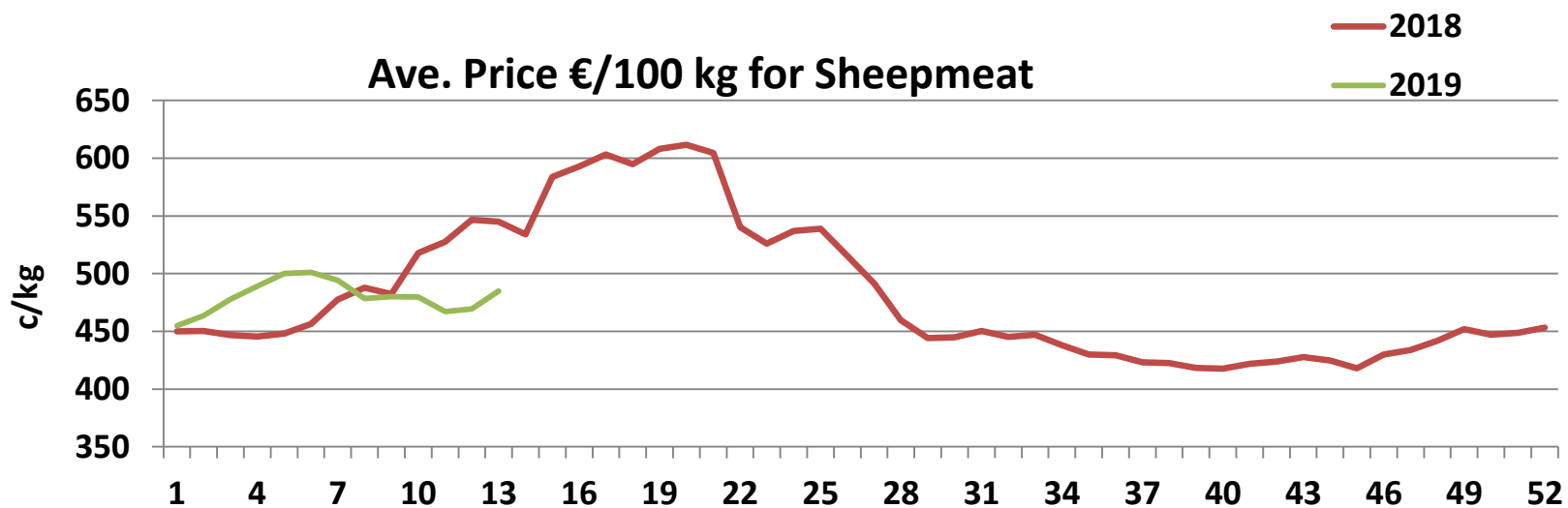
REPORT ON SLAUGHTERING AT SHEEP EXPORT PREMISES
WEEK 13

CATEGORY	2019		2018		DIFFERENCE	
	Weekly	Cumulative	Weekly	Cumulative	Weekly	Cumulative
Lambs/Hoggets	37,713	456,121	48,448	561,231	-10,735	-105,110
Spring Lambs	337	13,245	1,784	4,109	-1,447	9,136
Ewes and Rams	5,741	92,524	8,208	99,336	-2,467	6,812
Light Lambs	1	3	-	38	1	35
TOTAL	43,792	561,893	58,440	664,714	-14,648	-102,821

Weekly Sheep Slaughterings



Ave. Price €/100 kg for Sheepmeat



Comparison of Poultry Slaughter Figures Between 2018 and 2019						
WEEK	2019 weekly	2019 cumulative	2018 weekly	2018 cumulative	2018 v 2019	% difference
1	1,601,081	1,601,081	1,625,961	1,625,961	-24,880	-1.5%
2	2,186,960	3,788,041	1,969,356	3,595,317	192,724	5.4%
3	2,150,267	5,938,308	1,932,194	5,527,511	410,797	7.4%
4	2,088,739	8,027,047	1,886,770	7,414,281	612,766	8.3%
5	2,113,309	10,140,356	1,800,824	9,215,105	925,251	10.0%
6	1,986,794	12,127,150	1,994,979	11,028,136	1,099,014	10.0%
7	2,126,786	14,253,936	1,808,499	12,836,628	1,417,301	11.0%
8	2,028,518	16,282,454	1,922,060	14,758,695	1,523,759	10.3%
9	2,067,249	18,349,703	1,511,943	16,270,638	2,079,065	12.8%
10	1,998,848	20,348,551	2,159,284	18,429,922	1,918,629	10.4%
11	1,990,151	22,338,702	1,957,072	20,386,994	1,951,708	9.6%
12	1,991,273	24,329,975	1,734,665	22,121,659	2,208,316	10.0%
13	2,150,118	26,480,093	1,874,839	23,996,498	2,483,595	10.3%
14	0	26,480,093	1,755,145	25,756,393	-25,756,393	2.8%
15	0	26,480,093	1,963,967	27,720,360	-27,720,360	-100.0%
16	0	26,480,093	2,008,587	29,728,947	-29,728,947	-100.0%
17	0	26,480,093	1,994,979	31,723,926	-31,723,926	-100.0%
18	0	26,480,093	1,944,920	33,668,846	-33,668,846	-100.0%
19	0	26,480,093	1,749,772	35,418,618	-35,418,618	-100.0%
20	0	26,480,093	2,007,305	37,425,923	-37,425,923	-100.0%
21	0	26,480,093	1,948,360	39,374,283	-39,374,283	-100.0%
22	0	26,480,093	1,965,217	41,339,500	-41,339,500	-100.0%
23	0	26,480,093	1,726,225	43,065,725	-43,065,725	-100.0%
24	0	26,480,093	1,881,726	44,947,451	-44,947,451	-100.0%
25	0	26,480,093	1,904,281	46,851,732	-46,851,732	-100.0%
26	0	26,480,093	1,934,425	48,786,157	-48,786,157	-100.0%
27	0	26,480,093	1,818,807	50,604,964	-50,604,964	-100.0%
28	0	26,480,093	1,929,607	52,534,571	-52,534,571	-100.0%
29	0	26,480,093	2,022,893	54,557,464	-54,557,464	-100.0%
30	0	26,480,093	1,912,787	56,470,251	-56,470,251	-100.0%
31	0	26,480,093	2,013,496	58,483,747	-58,483,747	-100.0%
32	0	26,480,093	1,724,075	60,207,822	-60,207,822	-100.0%
33	0	26,480,093	1,923,341	62,131,163	-62,131,163	-100.0%
34	0	26,480,093	1,932,984	64,064,147	-64,064,147	-100.0%
35	0	26,480,093	1,990,167	66,054,314	-66,054,314	-100.0%
36	0	26,480,093	1,958,476	68,012,790	-68,012,790	-100.0%
37	0	26,480,093	1,954,910	69,967,700	-69,967,700	-100.0%
38	0	26,480,093	1,944,867	71,912,567	-71,912,567	-100.0%
39	0	26,480,093	1,927,534	73,840,101	-73,840,101	-100.0%
40	0	26,480,093	1,859,440	75,699,541	-75,699,541	-100.0%
41	0	26,480,093	1,868,389	77,567,930	-77,567,930	-100.0%
42	0	26,480,093	1,853,452	79,421,382	-79,421,382	-100.0%
43	0	26,480,093	1,982,639	81,404,021	-81,404,021	-100.0%
44	0	26,480,093	1,764,735	83,168,756	-83,168,756	-100.0%
45	0	26,480,093	1,876,069	85,044,825	-85,044,825	-100.0%
46	0	26,480,093	2,048,853	87,093,678	-87,093,678	-100.0%
47	0	26,480,093	1,864,758	88,958,436	-88,958,436	-100.0%
48	0	26,480,093	2,133,394	91,091,830	-91,091,830	-100.0%
49	0	26,480,093	3,850,235	94,942,065	-94,942,065	-100.0%
50	0	26,480,093	2,140,398	97,082,463	-97,082,463	-100.0%
51	0	26,480,093	1,975,187	99,057,650	-99,057,650	-100.0%
52	0	26,480,093	1,288,787	100,346,437	-100,346,437	-100.0%