

Meat Market Report

15/04/19 - 21/04/19

Week

16



**An Roinn Talmhaíochta,
Bia agus Mara**

Department of Agriculture,
Food and the Marine

MARKET SUMMARY

Beef

Deadweight Prices c/100Kg (Including VAT)

	U3	U4	R3	R4	O3	O4	P+
Steers	396.4	392.8	385.4	385.8	367.4	370.6	344.0
Heifers	413.7	413.1	400.0	399.3	379.7	379.6	347.2
Young Bulls	371.0	365.8	356.7	354.2	336.9	345.2	317.6
Cows			312.5	314.1	287.3	289.5	278.8

Liveweight Prices

*Bull Calf Average Price	€138.7 per head (Excluding VAT)
**Young Store Average Price	€227.0 per 100kg (Excluding VAT)
***Yearling (male & female) Price	€204.0 per 100kg (Excluding VAT)

* Aged 8-28 days ** Aged 180-364 days, Male & Female ***age 365-730 days

Slaughterings

31,552 cattle slaughtered this week, of which steers were 11,424 (36%), heifers 9,542 (30%), young bulls 3,723 (12%) and cows 5,739 (18%). Total YTD slaughter is 561,611 compared to 528,489 in 2018, a 6% increase.

Live Trade

14,506 cattle were exported in the week commencing 08/04/2019*; 13,244 to EU (Except NI). Live exports for 2019 amount to 136,671 compared to 100,668 in 2018, up 36% on 2018 levels.

*This data is provisional and subject to revision.

The next meeting of the Management Committee for the Common Organisation of Agricultural Markets (Animal Products Sector) is 23rd May 2019

CONTENTS:

Page 2: Market Summary Beef
 Page 3: Market Summary Other Meats
 Page 4: Beef Price and Slaughter Summary
 Page 5: Comparative Beef Prices
 Page 6: Steer and Young Bull Price
 Page 7: Heifer and Cow Graphs
 Page 8: Price and Slaughter Graphs
 Page 9: Liveweight Beef Graphs

Page 10: Beef Export Maps
 Page 11: Beef Export Info
 Page 12: Pig price and slaughter graphs
 Page 13: Sheep prices and slaughter
 Page 15: Sheep price and slaughter graphs

MARKET SUMMARY

Pigmeat

Grade E Pig
Prices (Ex.
VAT)

The Grade E Pig price for week commencing 08/04/2019 was €147.90 per 100Kg compared to €139.23 in the same week last year, which represents a 1.1% increase.

Slaughtering

65,021 pigs were slaughtered in week 16 of which 1,881 were sows. The cumulative figure for pig slaughterings in 2019 is 1,062,724 which is up 2% against the same point last year.

Sheepmeat

Sheepmeat
Prices (Ex.
VAT)

The national average price for the week commencing 15/04/2019 was €529.06 per 100Kg, a decrease of 11% over the same week last year.

Slaughtering

53,548 sheep were slaughtered at sheep export premises the week commencing 15/04/2019, compared to 49,378 in the same week of 2018. Sheep slaughterings for 2019 are 11% down on 2018 at 720,920 head.

Live Trade

Total live exports to European Countries stood at 20,769 head to the end of 2018.

Poultry

Slaughtering

Cumulative poultry slaughterings for 2019* stand at 30,558,985 birds at the end of week 15, up 10% compared to the same period last year.

*Latest Figures are provisional and subject to change

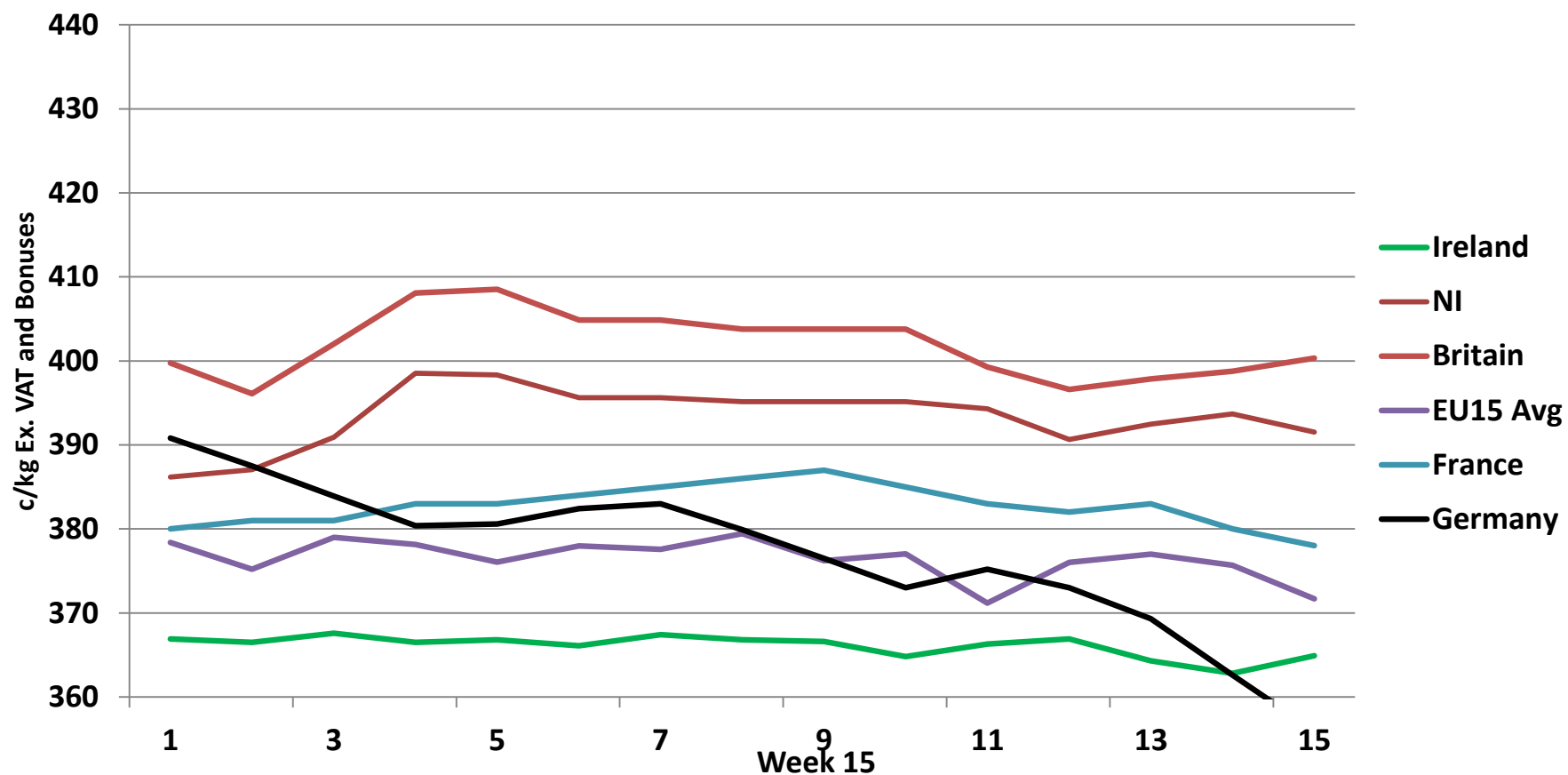
Dead Weight Prices	W/C	W/C	Same week 2018	% change prev week	% change 2018
	15/04/19	08/04/19	16/04/18		
Steers (R3) (c/kg)	365.7	364.9	395.6	0.2%	-7.6%
Heifers (R3) (c/kg)	379.5	377.5	407.7	0.5%	-6.9%
Young Bulls (U3) (c/kg)	352.0	349.5	399.7	0.7%	-11.9%
Cows (04) (c/kg)	274.7	271.0	334.8	1.4%	-18.0%

Live Weight Prices	W/C	W/C	Same week 2017	% change previous week	% change 2018
	15/04/19	08/04/19	16/04/18		
Yearlings (Male) (Aged 365 - 730 days) - (€/100Kg)	201	189	208	6.3%	-3.4%
Yearlings (Female) (Aged 365 - 730 days) - (€/100Kg)	207	199	213	4.0%	-2.8%
Young Stores (Male & Female) (Aged 180 - 364 days) - (€/100Kg)	227	218	238	4.1%	-4.6%
Bull Calf (€/head) Dairy	121.0	103.2	133.0	17.2%	-9.0%
Bull Calf (€/head) Beef	156.4	163.1	171.4	-4.1%	-8.8%
Bull Calf (€/head) Average	138.7	133.2	152.2	4.2%	-8.9%

Slaughter Figures	% of weekly figures	W/C	Same week 2018	Year to Date		Change 2019 v 2018	
		15-Apr-19		2019	2018	Head	%
Steers	36.2%	11,424	12,585	182,300	181,393	907	0.5%
Cows	18.2%	5,739	7,534	110,129	110,968	-839	-0.8%
Heifers	30.2%	9,542	9,622	172,338	154,850	17,488	11.3%
Young Bulls	11.8%	3,723	3,024	86,285	72,300	13,985	19.3%
Mature Bulls	3.6%	1,124	609	10,559	8,978	1,581	17.6%
Total	100%	31,552	33,374	561,611	528,489	33,122	6.3%

Live Exports	W/C	Same week	W/C	Year to Date		Change 2019 v 2018	
	8-Apr-19	2018	01-Apr-19	2019	2018	Head	%
Northern Ireland	1,097	431	989	9,883	4,722	5,161	109%
EU Except NI	13,244	8,845	14,163	124,548	89,336	35,212	39%
Third Countries	165	2,118	0	2,240	6,610	-4,370	-
Total	14,506	11,394	15,152	136,671	100,668	36,003	36%

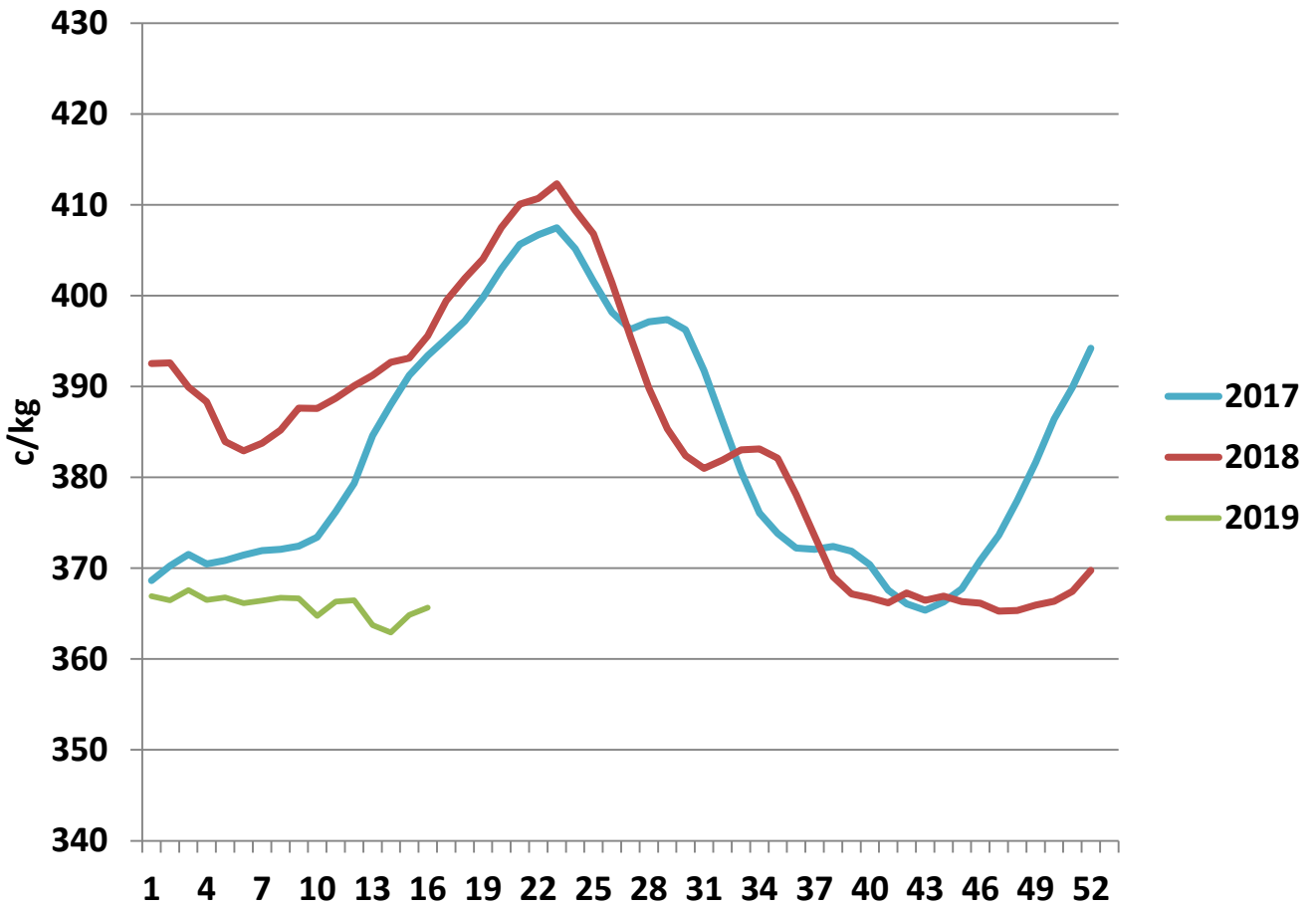
Irish Deadweight Cattle Prices vs Selected Other Markets, 2019



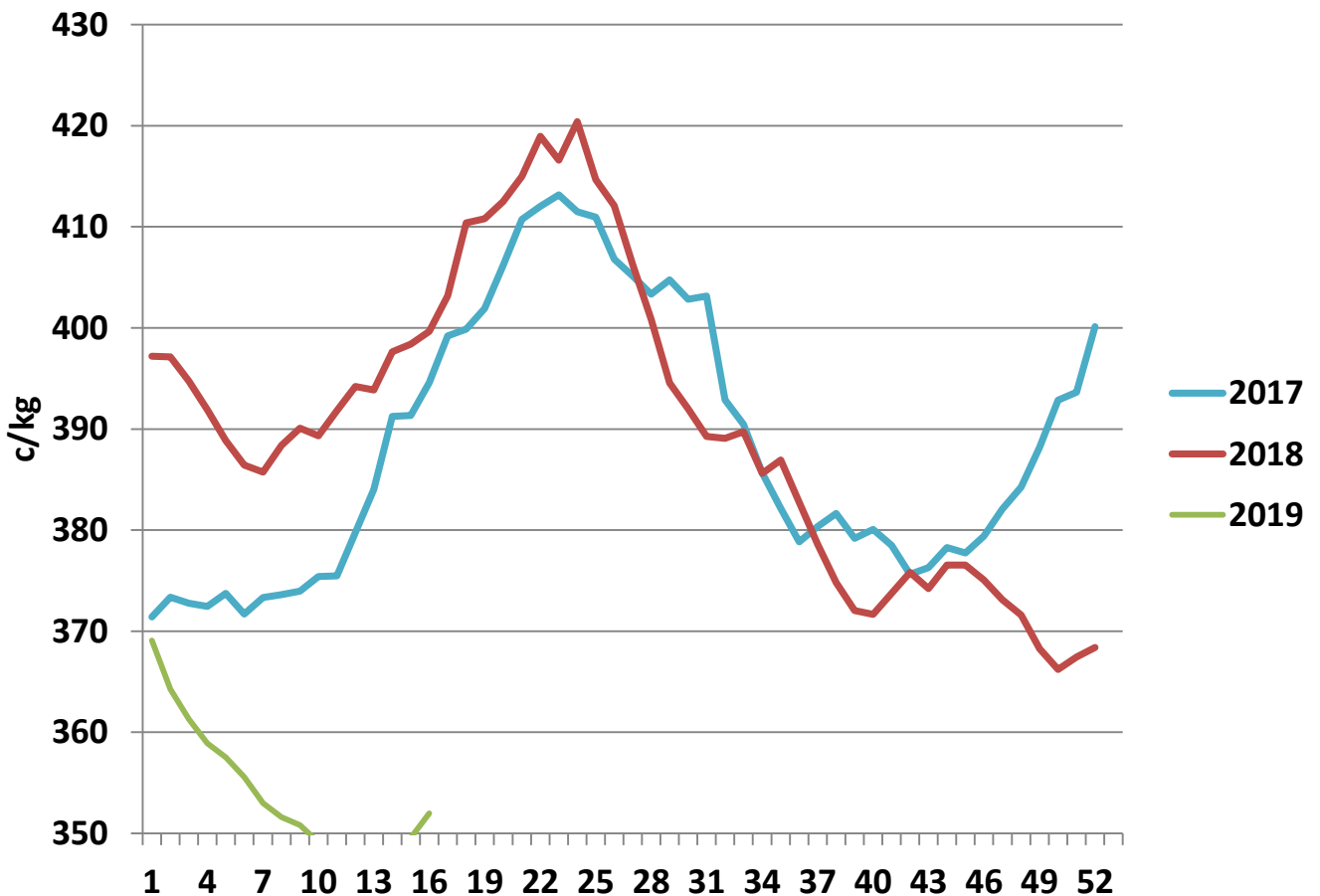
Livestock Pricing

	Ireland	NI	Britain	EU 15 Average	France	Germany
W/C 08/04/19	364.9	391.52	400.33	371.67	378	356

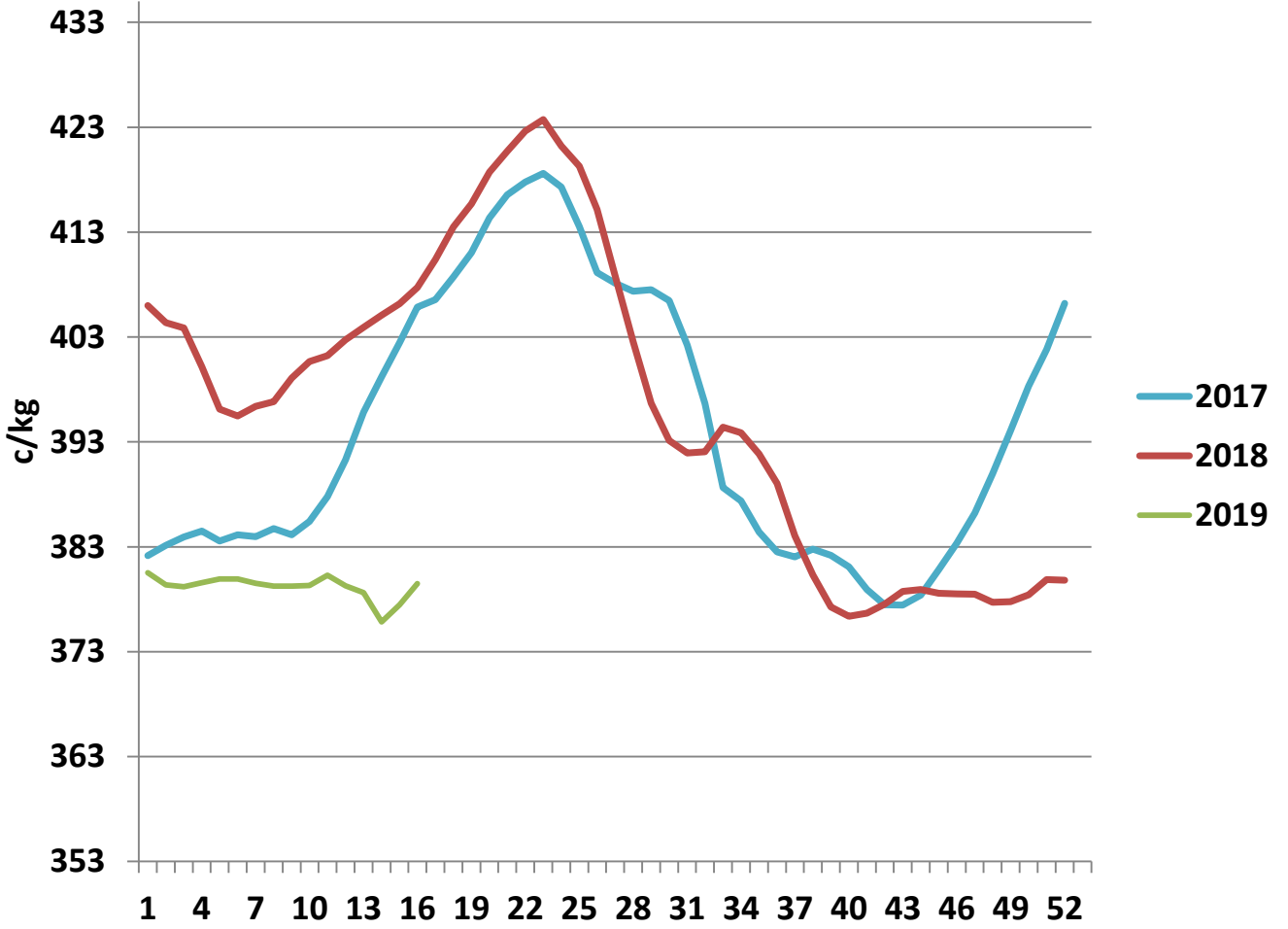
R3 Steer prices ex. VAT



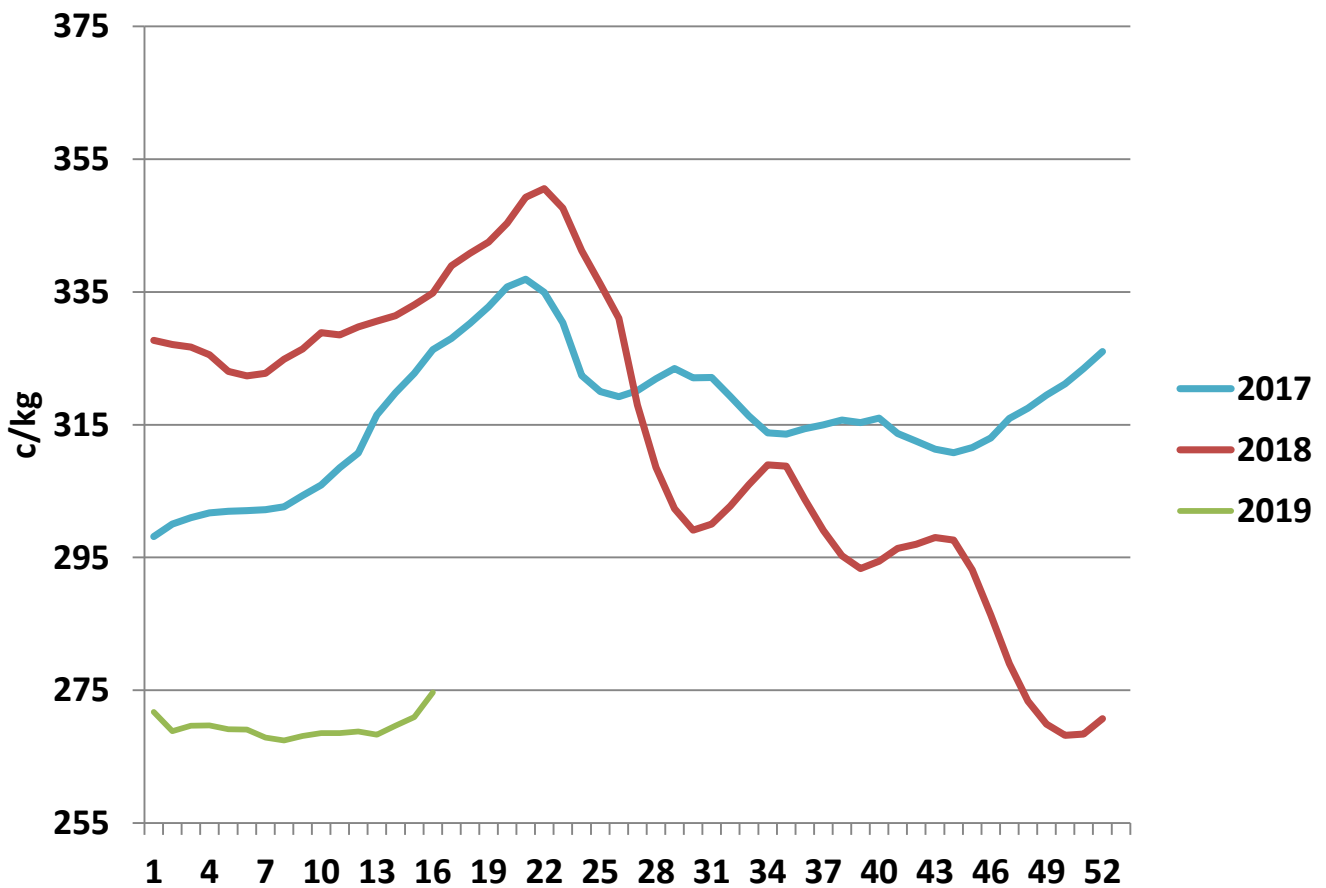
U3 Young Bull prices ex. VAT

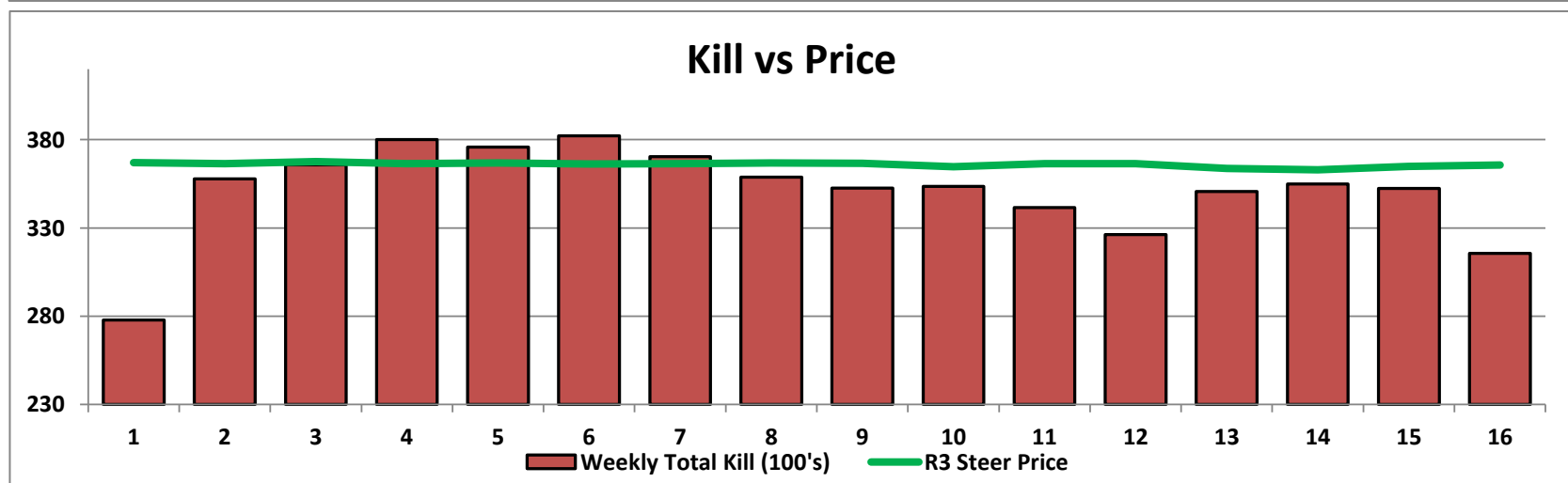
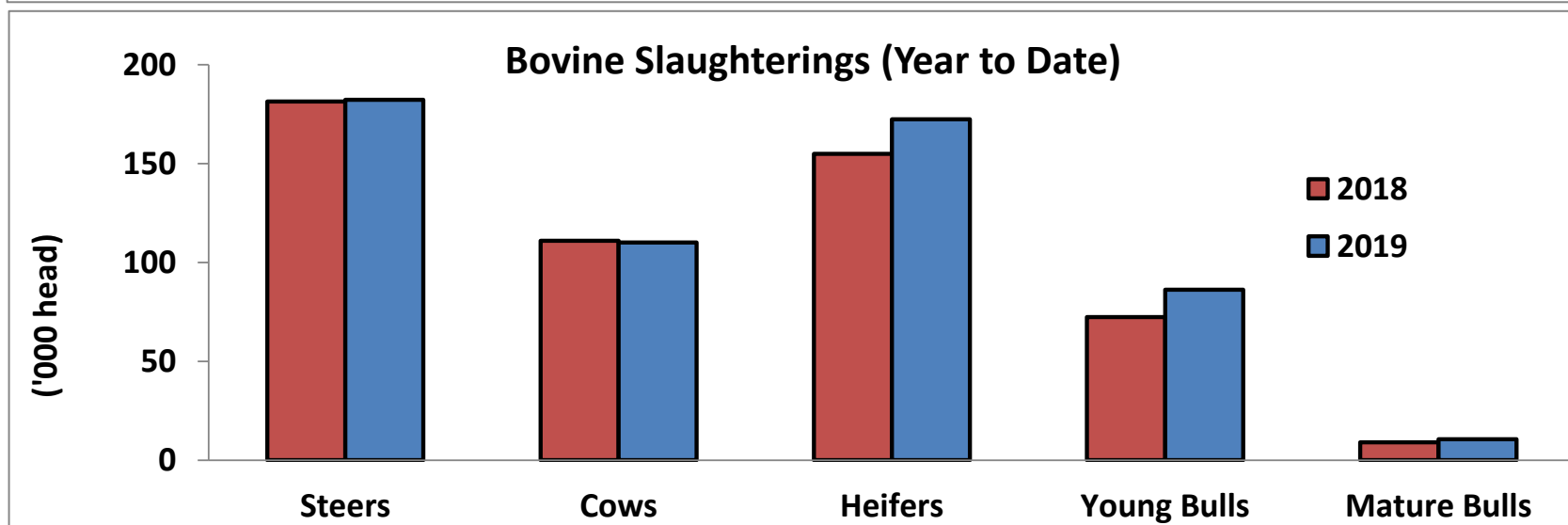
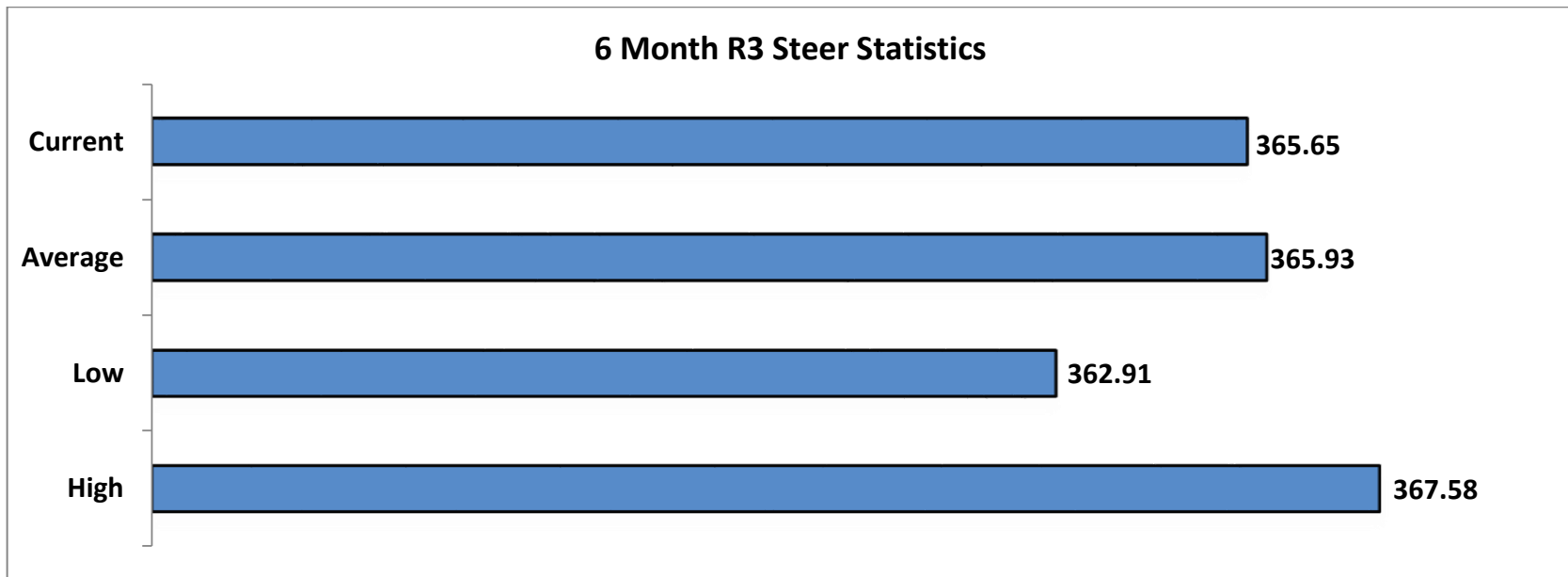


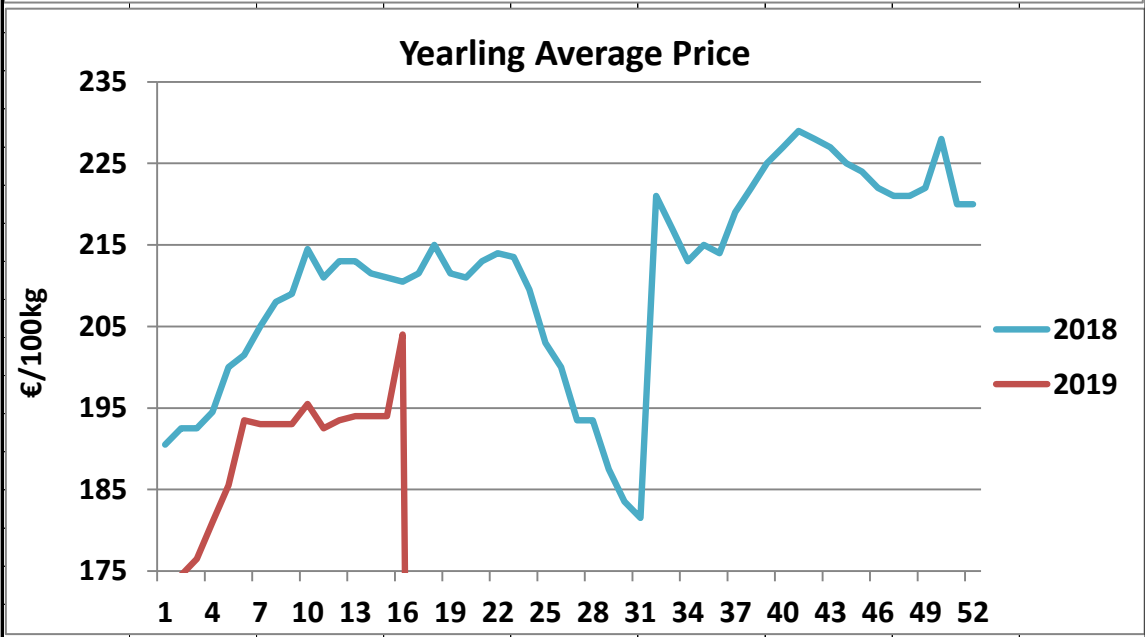
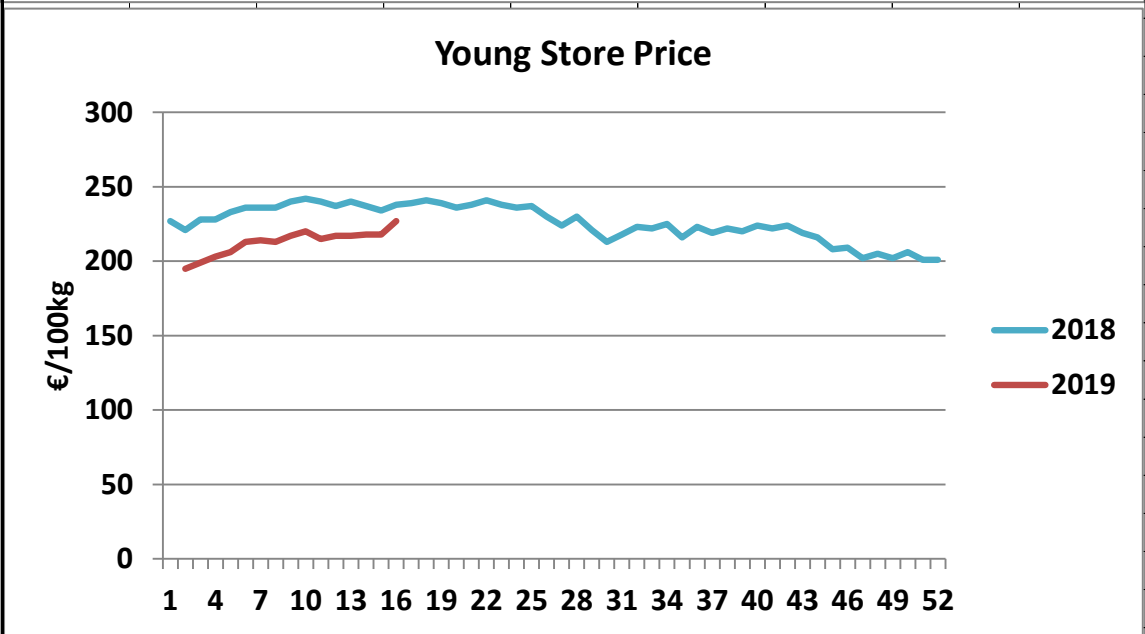
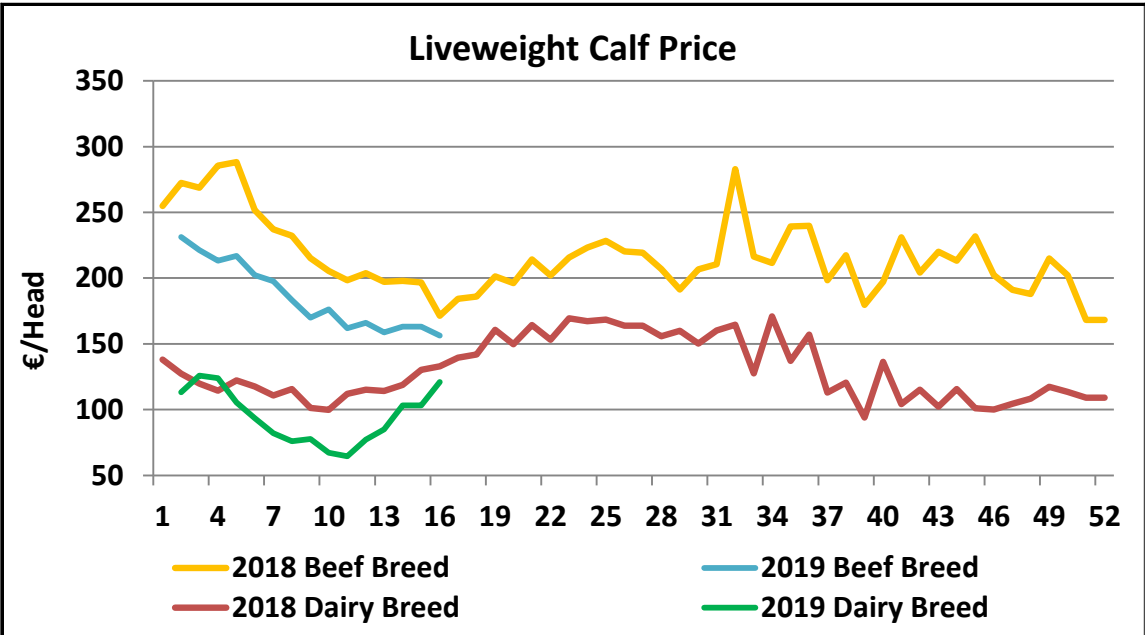
R3 Heifer prices ex. VAT



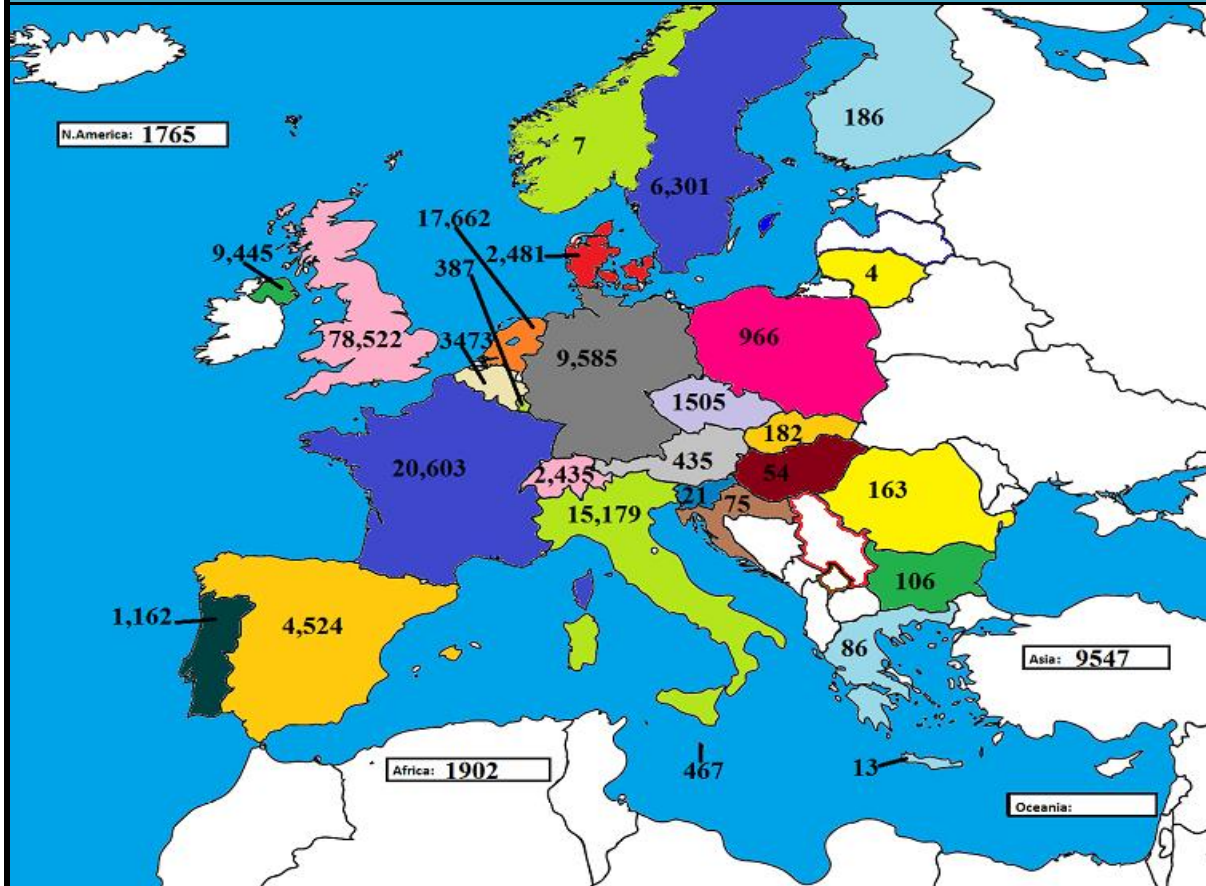
O4 Cow prices ex. VAT



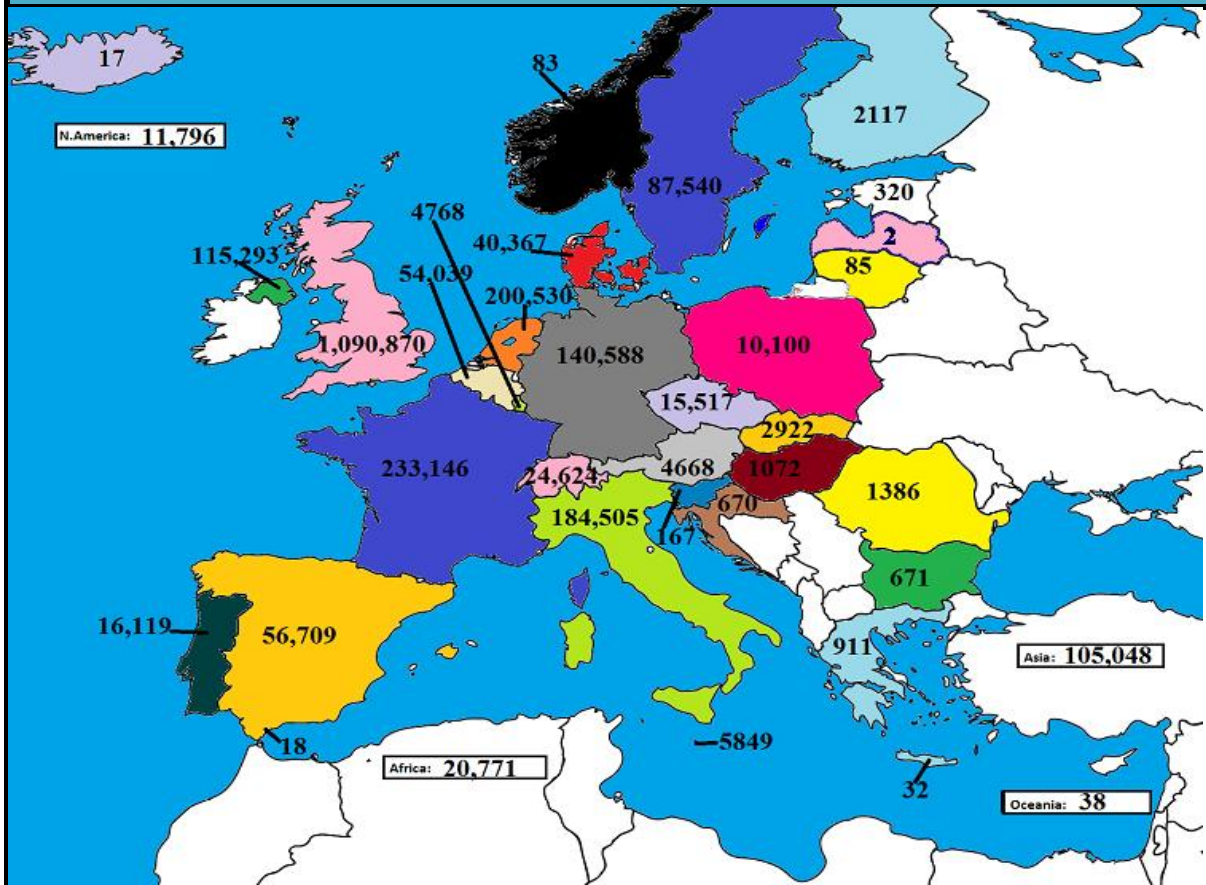




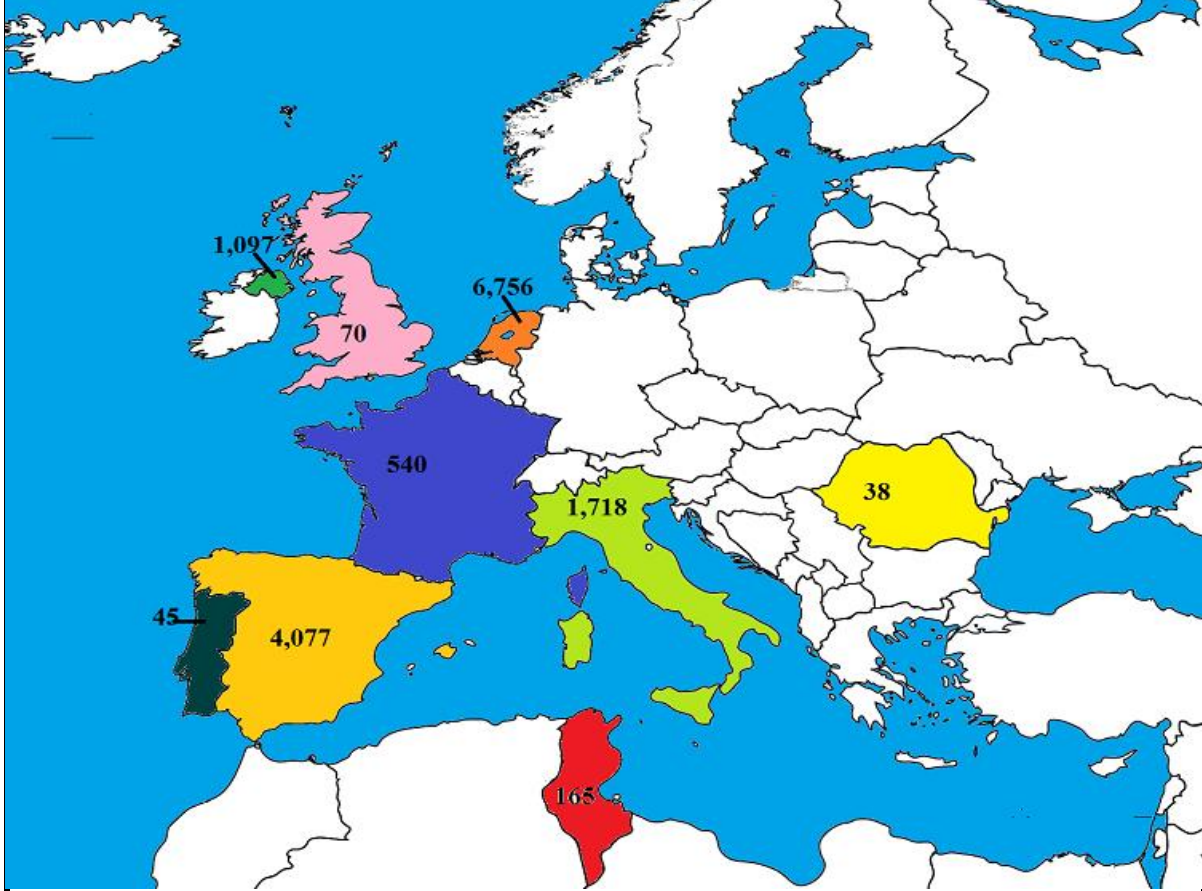
February 2019 Beef exports, €000 (CSO figures)



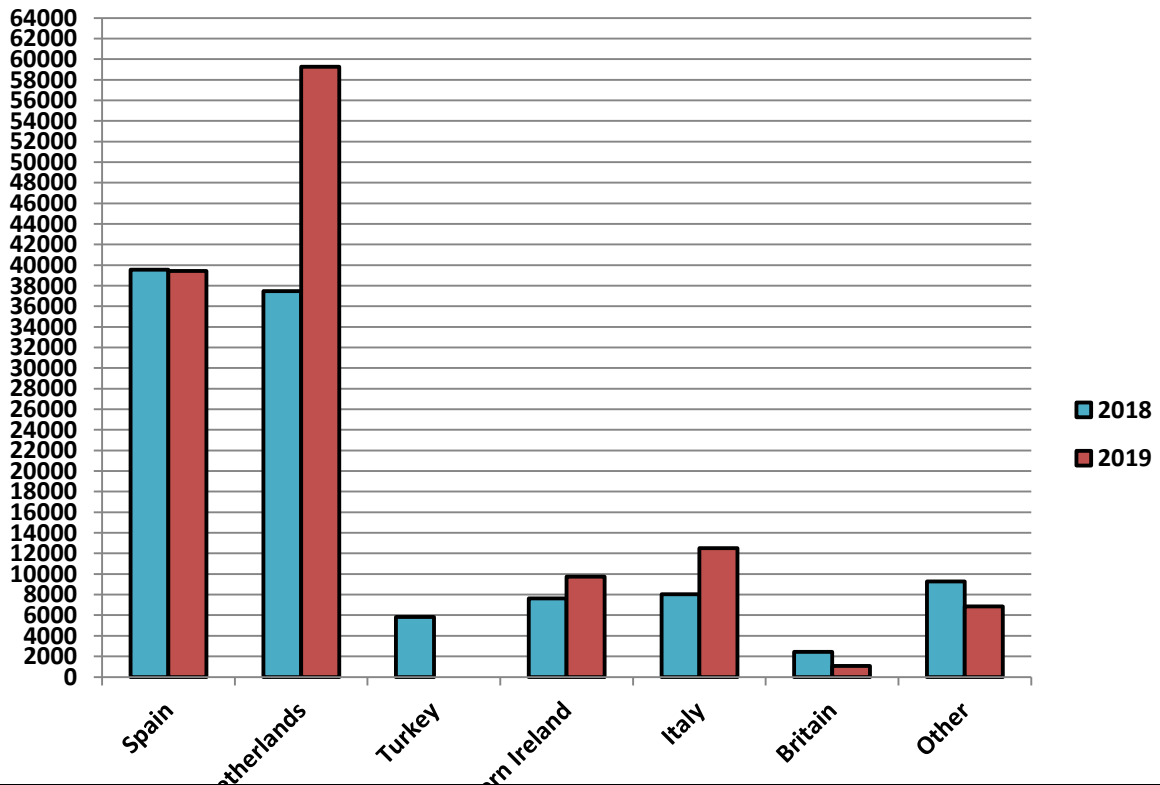
Cumulative beef exports to Dec 2018, €000 (CSO figures)

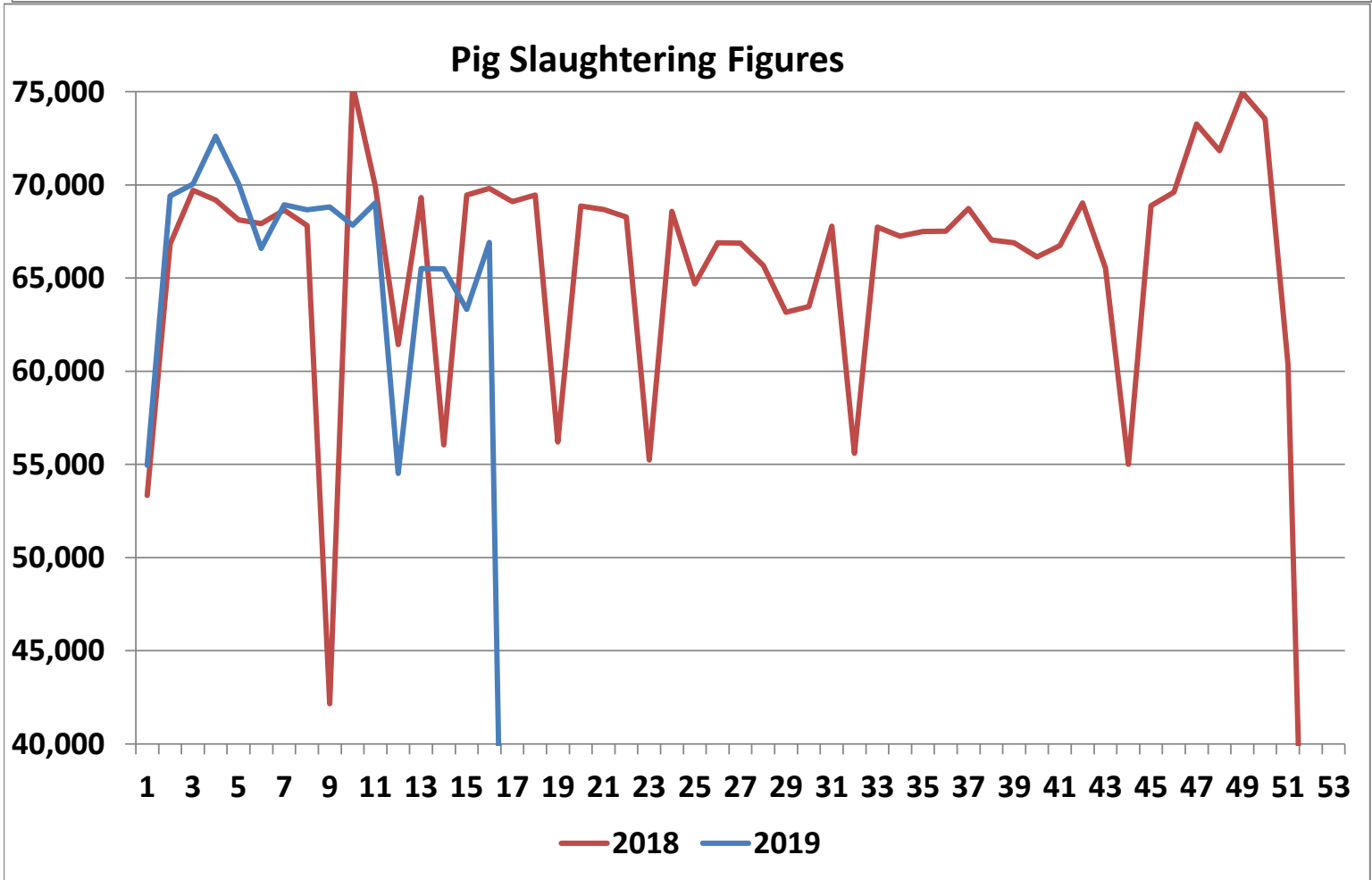
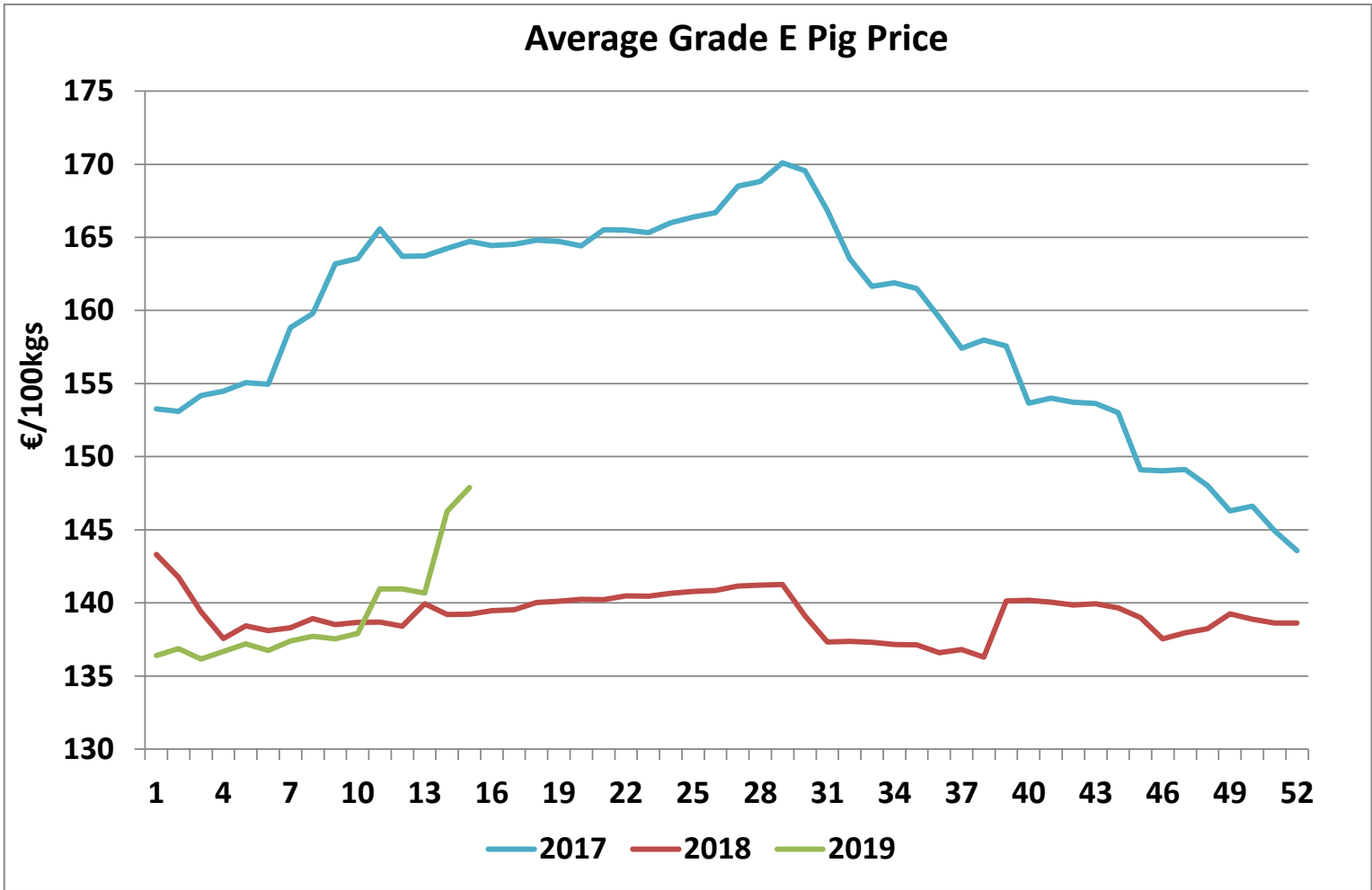


Cattle exported, w/c 08/04/19



Cumulative cattle export figures, 2019





Sheepmeat Information for Week 16 15.04.2019 - 21.04.2019

Irish Prices €/100 kg	2019	2018	Change
Ave Factory Price	535.73	605.87	-11.6%
Ave Mart Price	513.48	562.27	-8.7%
National Ave Price	529.06	592.79	-10.8%
YTD Ave	486.85	499.54	-2.5%

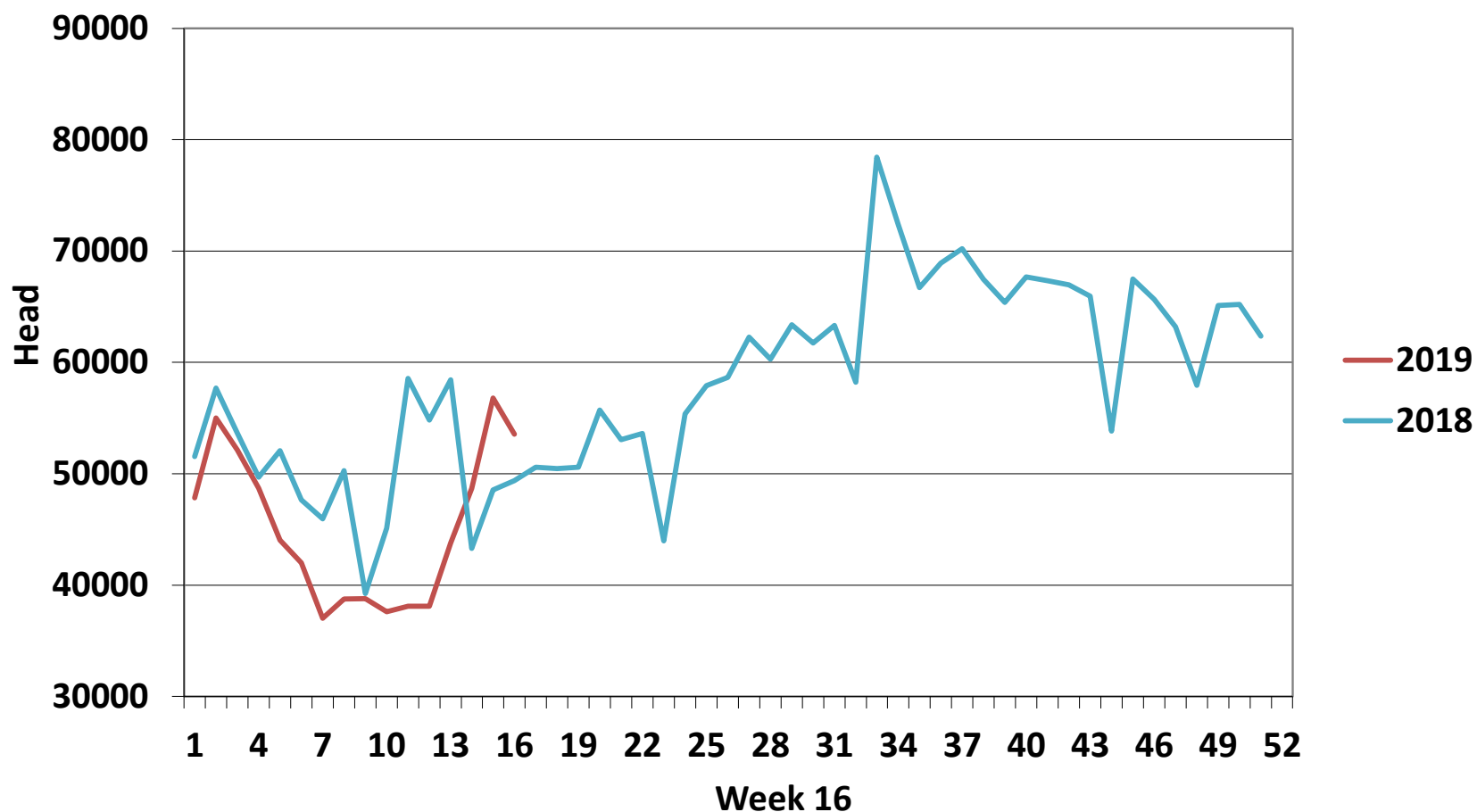
Slaughterings	2019	2018	Change
Weekly	53,548	49,378	8%
YTD	720,920	805,960	-11%

EU Market Rates Heavy Lambs	€/100kg	% of Community Price
Belgium	558.1	101%
Denmark	472.8	86%
Germany	548.3	99%
Spain	537.8	97%
France	667.0	121%
Croatia	518.8	94%
Ireland	529.1	96%
Italy	588.0	106%
Cyprus	454.0	82%
Latvia	333.8	60%
Lithuania	435.7	79%
Netherlands	558.0	101%
Austria	566.0	102%
Poland	466.0	84%
Romania	284.4	51%
Finland	361.8	65%
Sweden	528.3	96%
Northern Ireland	500.8	91%
Great Britain	541.7	98%
United Kingdom	538.8	97%
Community	552.9	100%

**REPORT ON SLAUGHTERING AT SHEEP EXPORT PREMISES
WEEK 16**

CATEGORY	2019		2018		DIFFERENCE	
	Weekly	Cumulative	Weekly	Cumulative	Weekly	Cumulative
Lambs/Hoggets	41,424	583,347	37,218	670,907	4,206	87,560
Spring Lambs	4,712	25,474	2,432	8,767	2,280	16,707
Ewes and Rams	7,412	112,096	9,708	126,228	-2,296	14,132
Light Lambs	-	3	20	58	-20	55
TOTAL	53,548	720,920	49,378	805,960	4,170	-85,040

Weekly Sheep Slaughtering



Ave. Price €/100 kg for Sheepmeat

