

Meat Market Report

22/04/19 - 28/04/19

Week
17



**An Roinn Talmhaíochta,
Bia agus Mara**
Department of Agriculture,
Food and the Marine

MARKET SUMMARY

Beef

Deadweight Prices c/100Kg (Including VAT)

	U3	U4	R3	R4	O3	O4	P+
Steers	398.5	399.6	389.8	389.3	369.6	373.6	347.3
Heifers	415.3	416.2	402.1	401.7	383.5	384.3	347.3
Young Bulls	376.4	369.2	365.1	360.2	342.1	355.4	327.3
Cows			315.9	316.9	293.9	295.1	285.8

Liveweight Prices

*Bull Calf Average Price	€143.4 per head (Excluding VAT)
**Young Store Average Price	€232.0 per 100kg (Excluding VAT)
***Yearling (male & female) Price	€209.0 per 100kg (Excluding VAT)

* Aged 8-28 days ** Aged 180-364 days, Male & Female ***age 365-730 days

Slaughterings

30,544 cattle slaughtered this week, of which steers were 10,540 (34%), heifers 9,307 (30%), young bulls 3,880 (13%) and cows 5,716 (19%). Total YTD slaughter is 592,155 compared to 560,618 in 2018, a 6% increase.

Live Trade

11,444 cattle were exported in the week commencing 15/04/2019*; 10,204 to EU (Except NI). Live exports for 2019 amount to 148,115 compared to 109,813 in 2018, up 35% on 2018 levels.

*This data is provisional and subject to revision.

The next meeting of the Management Committee for the Common Organisation of Agricultural Markets (Animal Products Sector) is 23rd May 2019

CONTENTS:

Page 2: Market Summary Beef
 Page 3: Market Summary Other Meats
 Page 4: Beef Price and Slaughter Summary
 Page 5: Comparative Beef Prices
 Page 6: Steer and Young Bull Price
 Page 7: Heifer and Cow Graphs
 Page 8: Price and Slaughter Graphs
 Page 9: Liveweight Beef Graphs

Page 10: Beef Export Maps
 Page 11: Beef Export Info
 Page 12: Pig price and slaughter graphs
 Page 13: Sheep prices and slaughter
 Page 15: Sheep price and slaughter graphs

MARKET SUMMARY

Pigmeat

Grade E Pig
Prices (Ex.
VAT)

The Grade E Pig price for week commencing 22/04/2019 was €156.15 per 100Kg compared to €139.54 in the same week last year, which represents a 3% increase.

Slaughtering

52,840 pigs were slaughtered in week 17 of which 1,616 were sows. The cumulative figure for pig slaughterings in 2019 is 1,115,564 which is level with the same point last year at 0%.

Sheepmeat

Sheepmeat
Prices (Ex.
VAT)

The national average price for the week commencing 22/04/2019 was €526.75 per 100Kg, a decrease of 13% over the same week last year.

Slaughtering

42,794 sheep were slaughtered at sheep export premises the week commencing 22/04/2019, compared to 50,582 in the same week of 2018. Sheep slaughterings for 2019 are 11% down on 2018 at 763,714 head.

Live Trade

Total live exports to European Countries stood at 20,769 head to the end of 2018.

Poultry

Slaughtering

Cumulative poultry slaughterings for 2019* stand at 32,602,099 birds at the end of week 16, up 10% compared to the same period last year.

*Latest Figures are provisional and subject to change

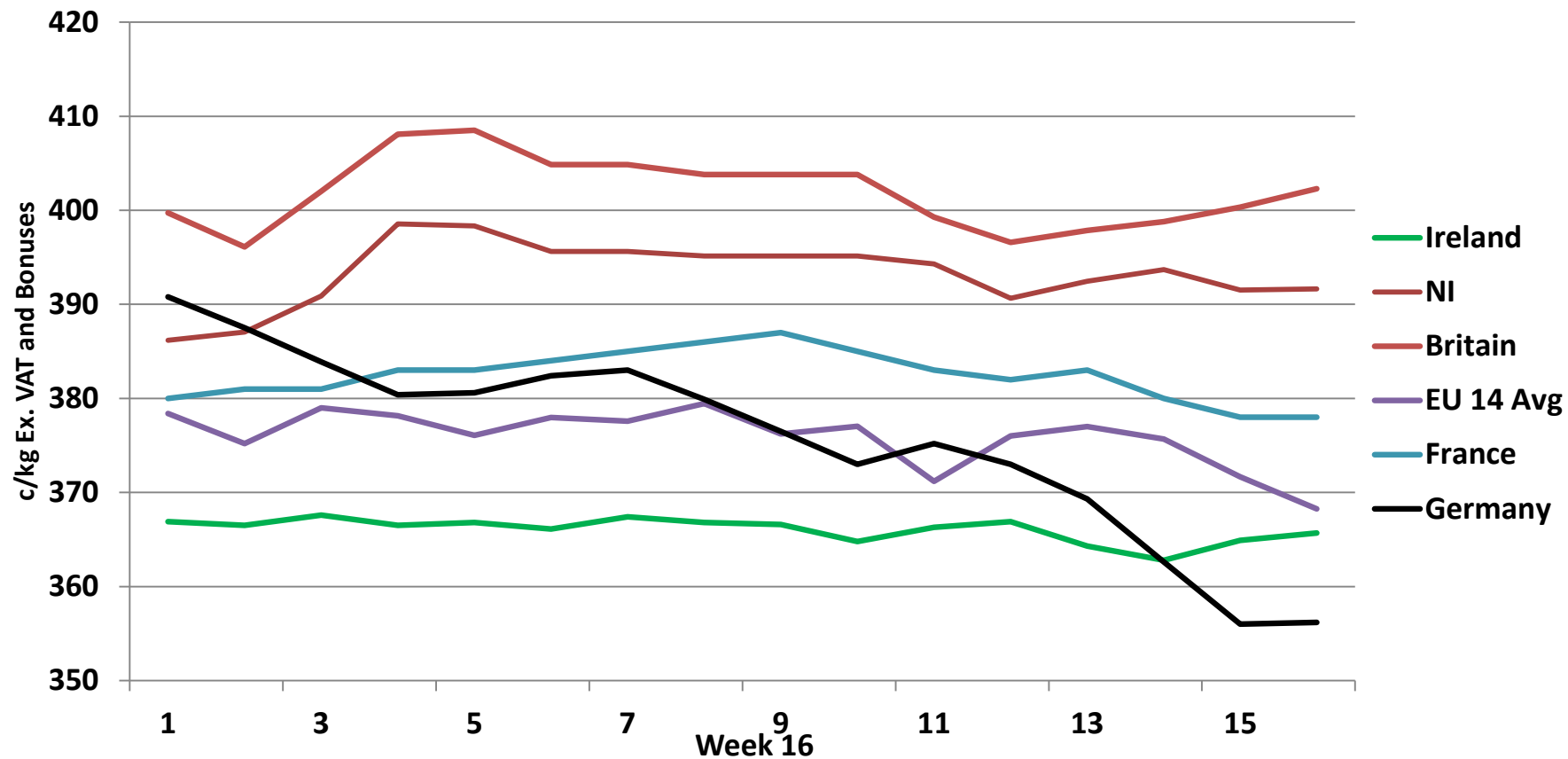
Dead Weight Prices	W/C	W/C	Same week 2018	% change prev week	% change 2018
	22/04/19	15/04/19	23/04/18		
Steers (R3) (c/kg)	369.9	365.7	399.4	1.2%	-7.4%
Heifers (R3) (c/kg)	381.5	379.5	410.4	0.5%	-7.0%
Young Bulls (U3) (c/kg)	357.1	352.0	403.2	1.5%	-11.4%
Cows (04) (c/kg)	280.0	274.7	338.9	1.9%	-17.4%

Live Weight Prices	W/C	W/C	Same week 2017	% change previous week	% change 2018
	22/04/19	15/04/19	23/04/18		
Yearlings (Male) (Aged 365 - 730 days) - (€/100Kg)	207	201	209	3.0%	-1.0%
Yearlings (Female) (Aged 365 - 730 days) - (€/100Kg)	211	207	214	1.9%	-1.4%
Young Stores (Male & Female) (Aged 180 - 364 days) - (€/100Kg)	232	227	239	2.2%	-2.9%
Bull Calf (€/head) Dairy	123.6	121.0	139.5	2.1%	-11.4%
Bull Calf (€/head) Beef	163.2	156.4	184.2	4.4%	-11.4%
Bull Calf (€/head) Average	143.4	138.7	161.8	3.4%	-11.4%

Slaughter Figures	% of weekly figures	W/C	Same week 2018	Year to Date		Change 2019 v 2018	
		22-Apr-19		2019	2018	Head	%
Steers	34.5%	10,540	11,745	192,878	193,171	-293	-0.2%
Cows	18.7%	5,716	7,119	115,845	118,087	-2,242	-1.9%
Heifers	30.5%	9,307	9,215	181,645	164,065	17,580	10.7%
Young Bulls	12.7%	3,880	3,261	90,127	75,545	14,582	19.3%
Mature Bulls	3.6%	1,101	789	11,660	9,750	1,910	19.6%
Total	100%	30,544	32,129	592,155	560,618	31,537	5.6%

Live Exports	W/C	Same week	W/C	Year to Date		Change 2019 v 2018	
	15-Apr-19	2018	08-Apr-19	2019	2018	Head	%
Northern Ireland	945	371	1,097	10,828	5,093	5,735	113%
EU Except NI	10,204	8,774	13,244	134,752	98,110	36,642	37%
Third Countries	295	0	165	2,535	6,610	-4,075	-
Total	11,444	9,145	14,506	148,115	109,813	38,302	35%

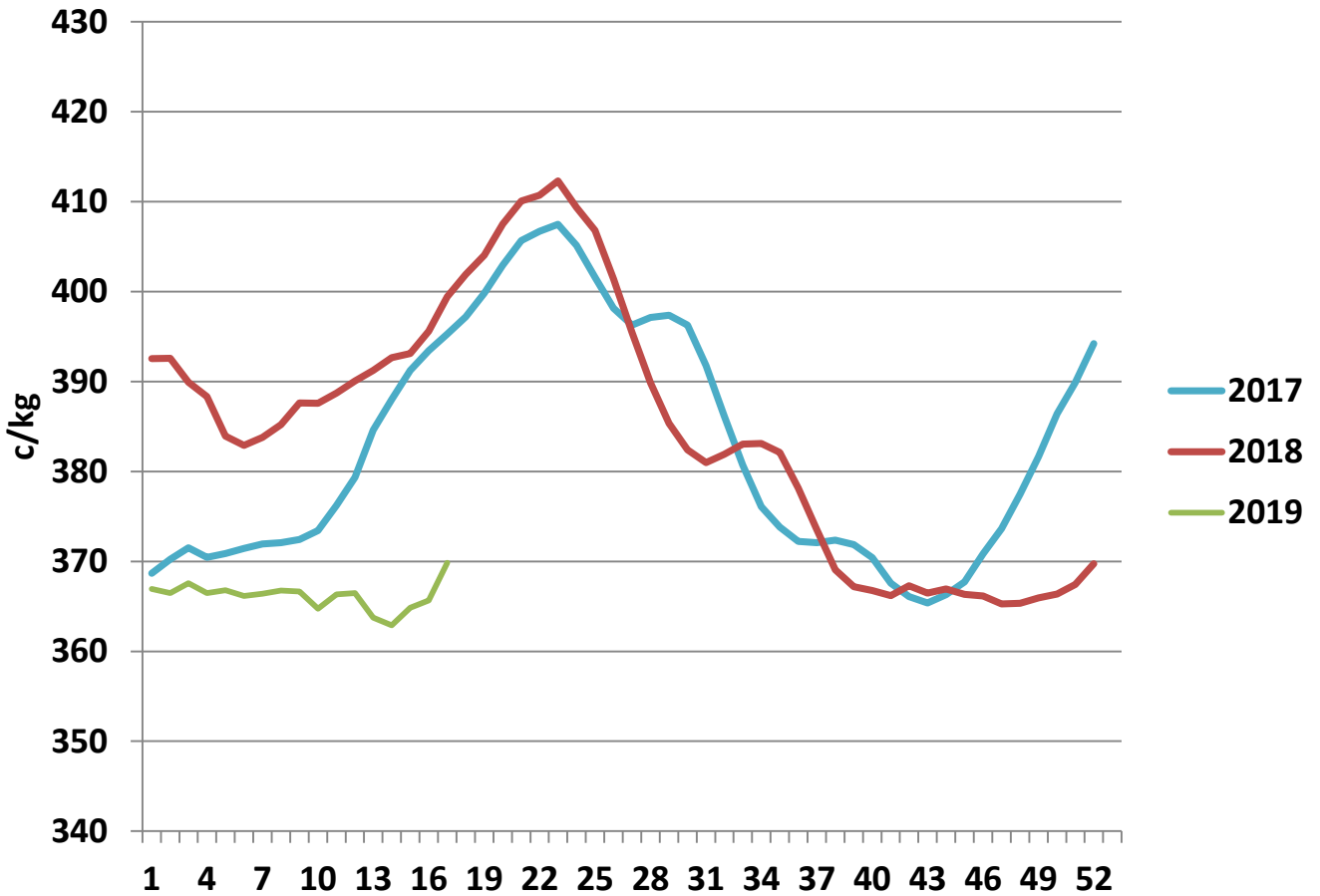
Irish Deadweight Cattle Prices vs Selected Other Markets, 2019



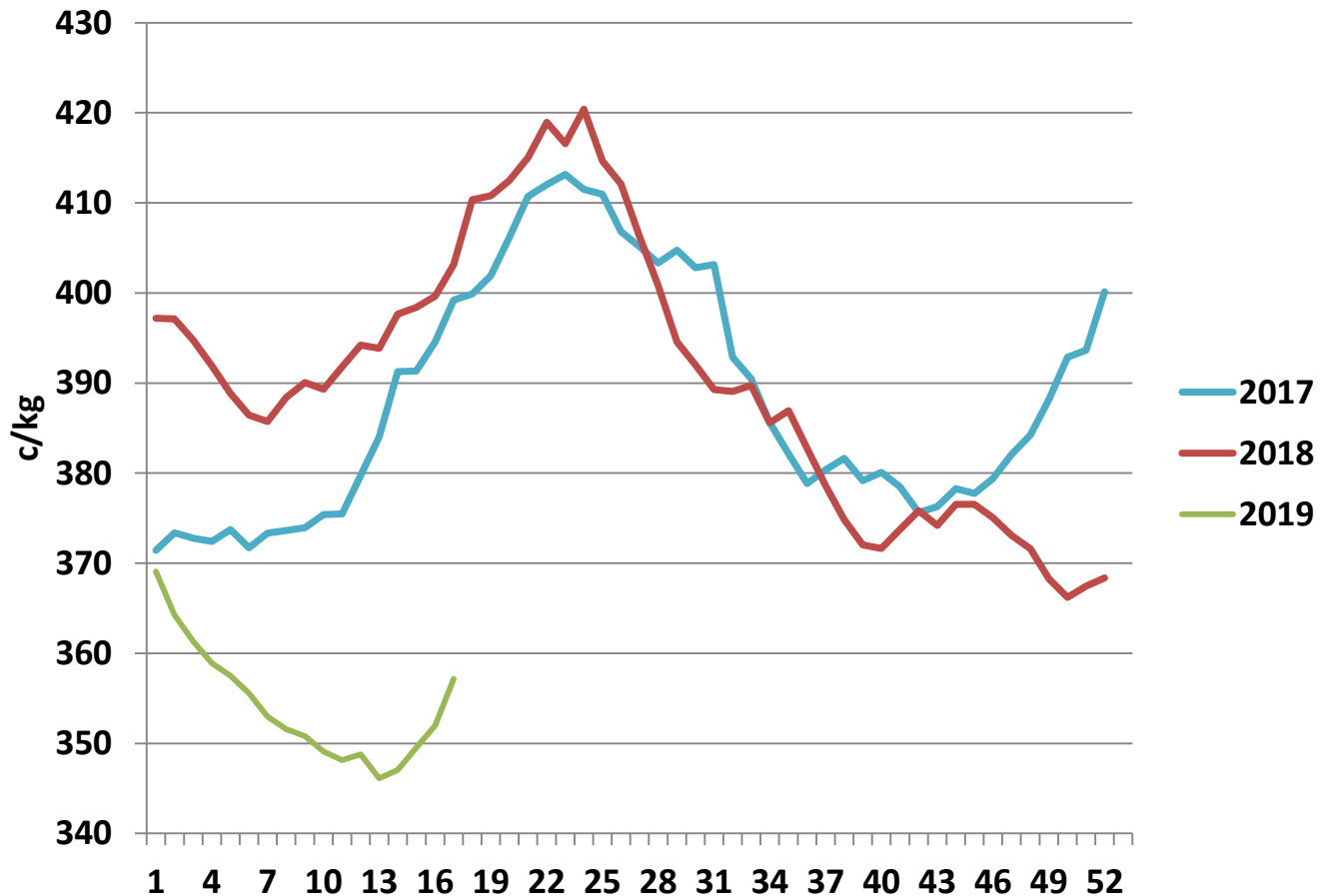
Livestock Pricing

	Ireland	NI	Britain	EU 14 Average	France	Germany
W/C 15/04/19	365.7	391.65	402.28	368.25	378	356.2

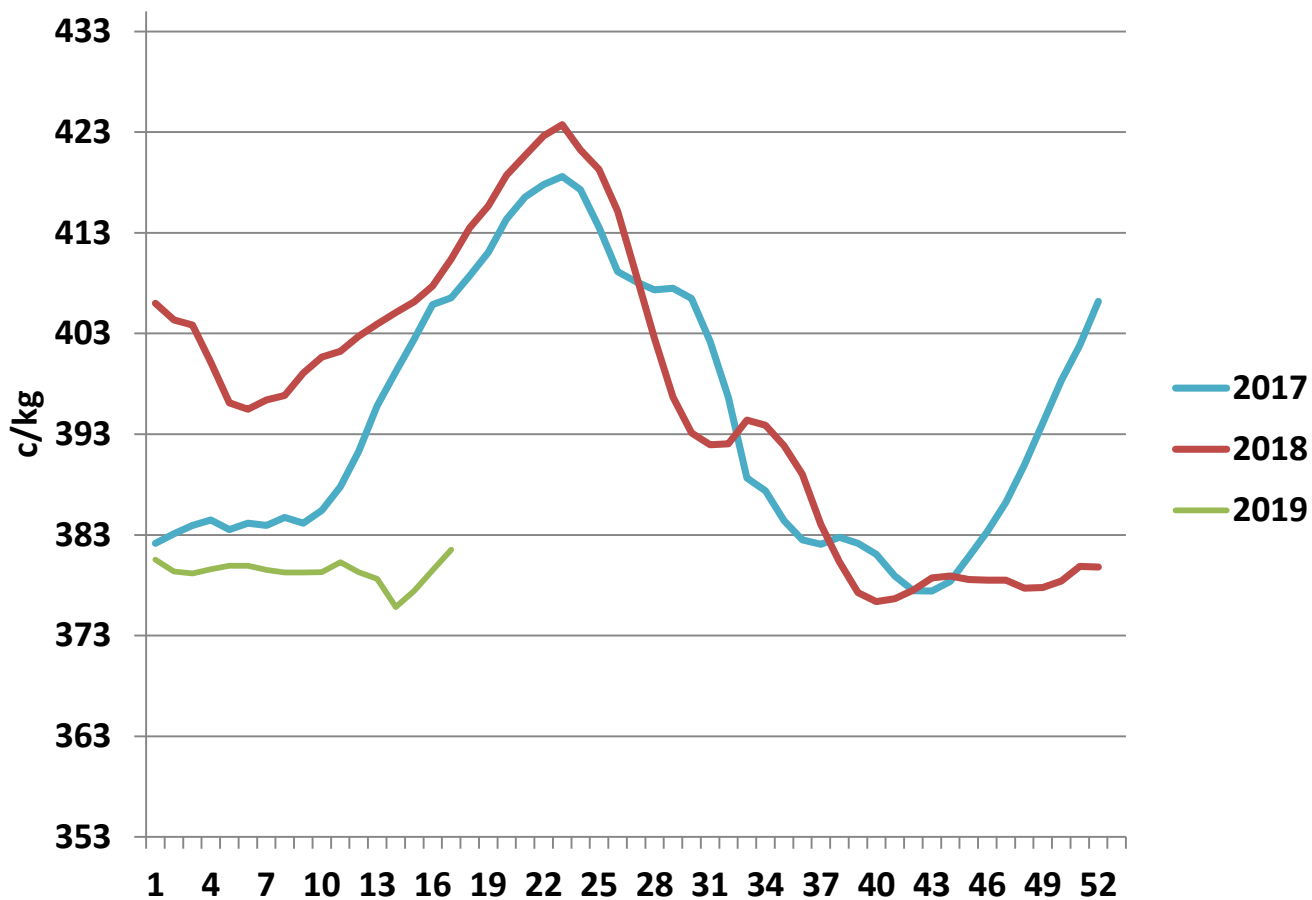
R3 Steer prices ex. VAT



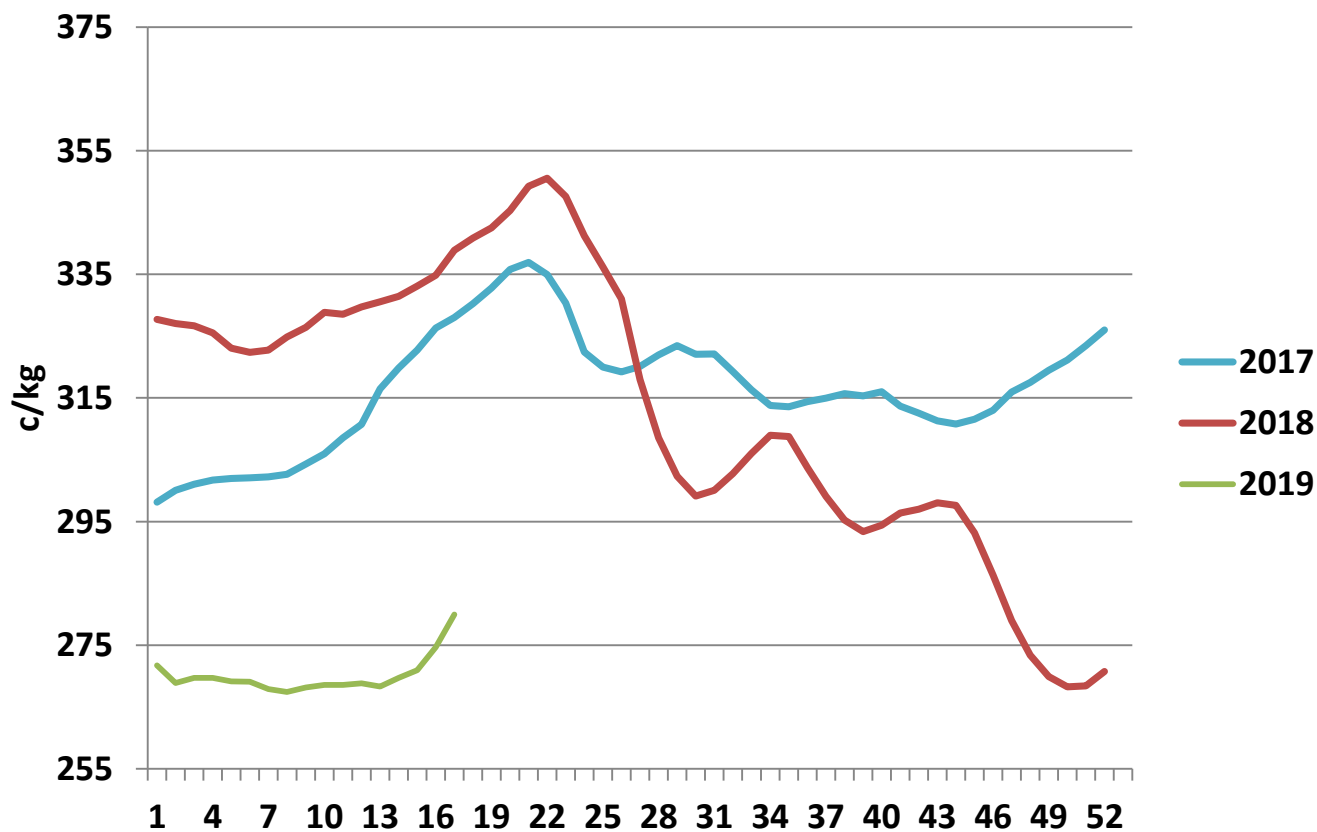
U3 Young Bull prices ex. VAT

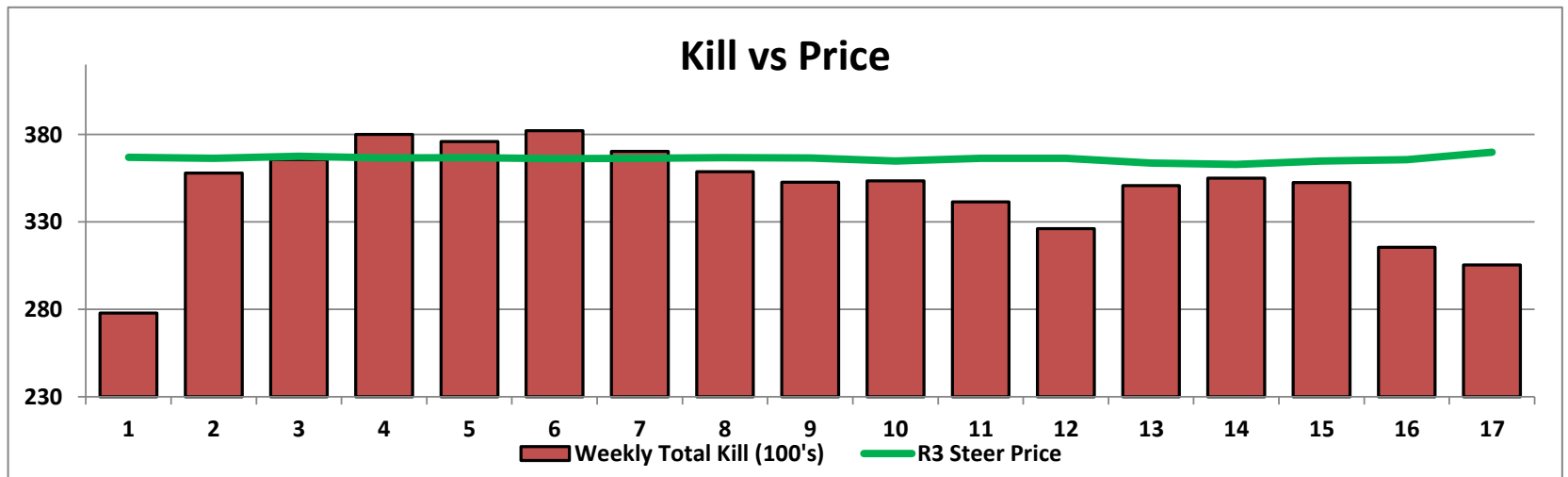
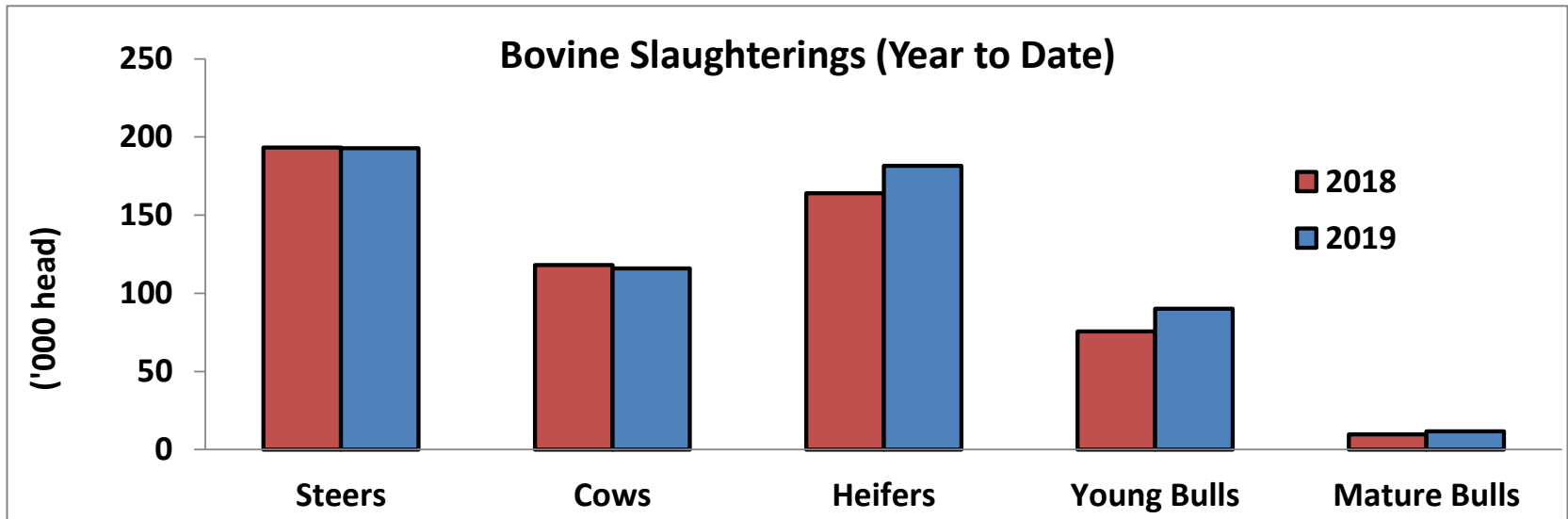
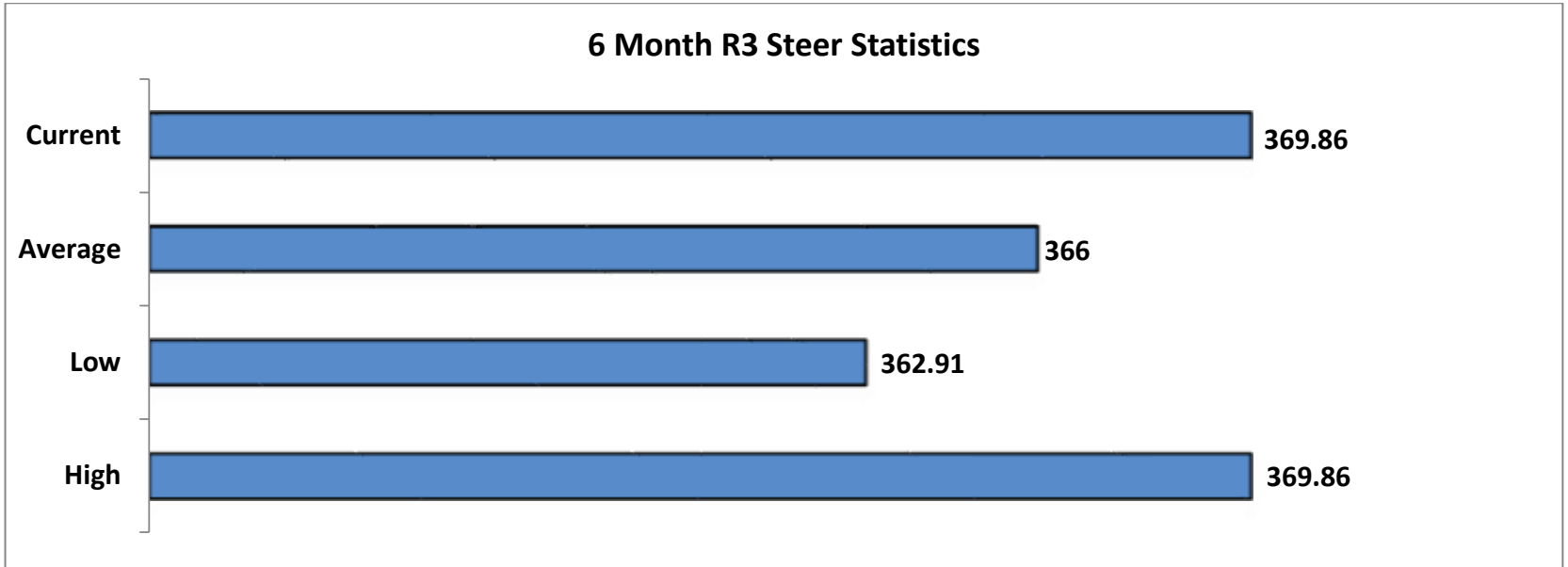


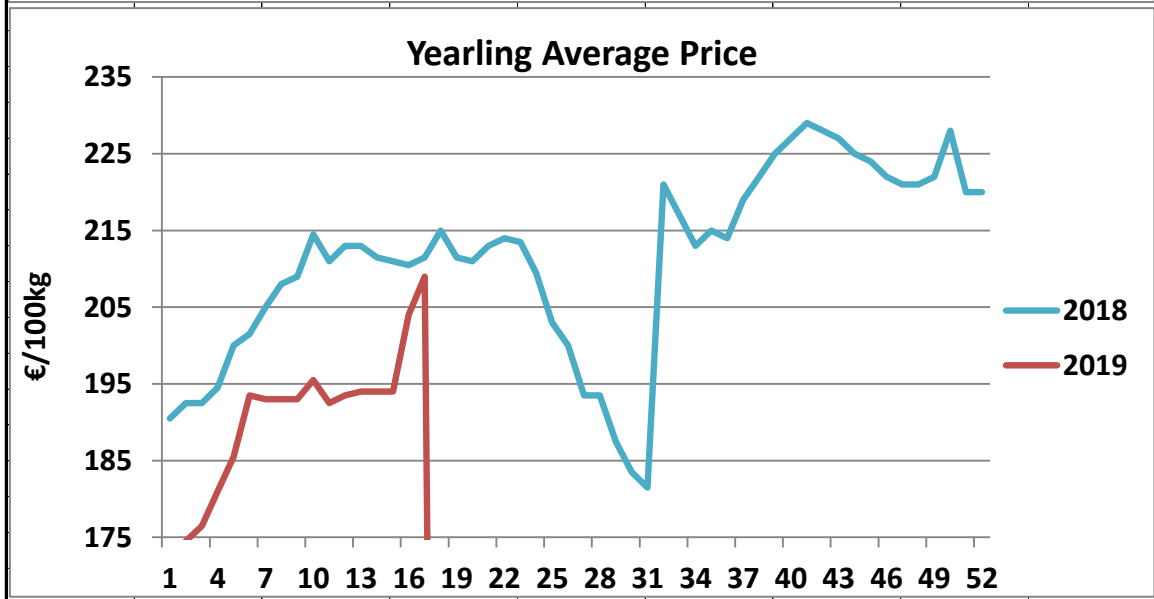
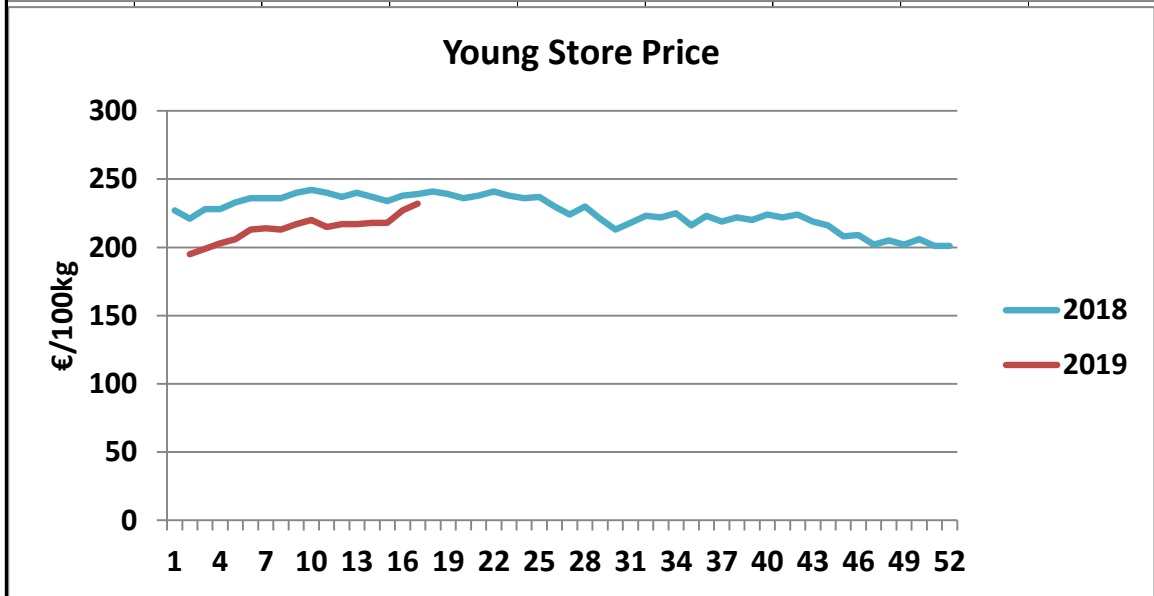
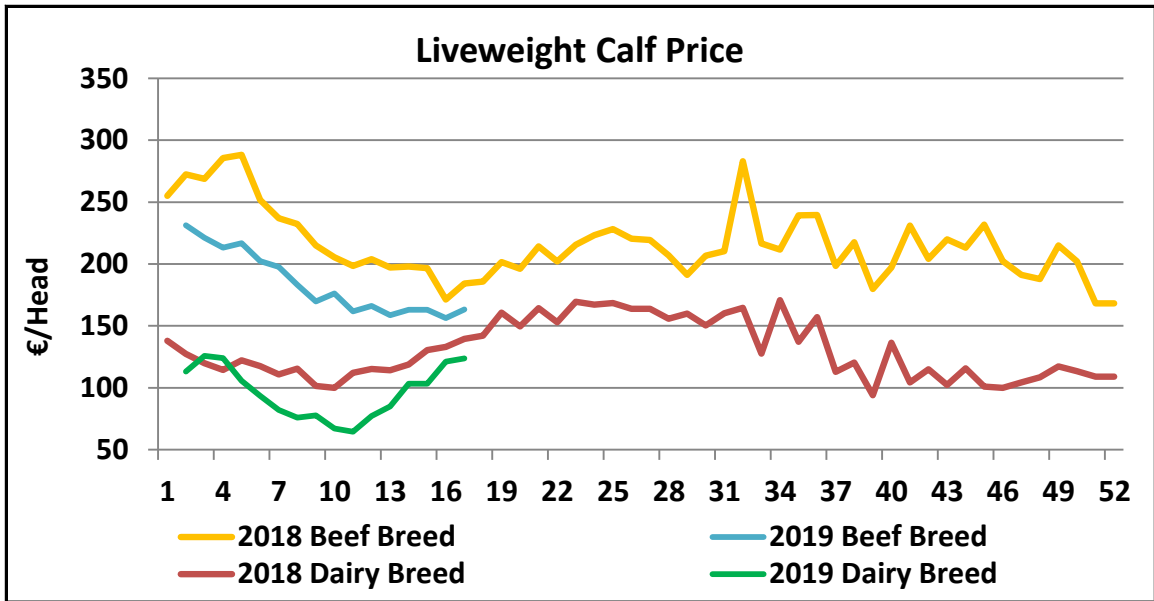
R3 Heifer prices ex. VAT



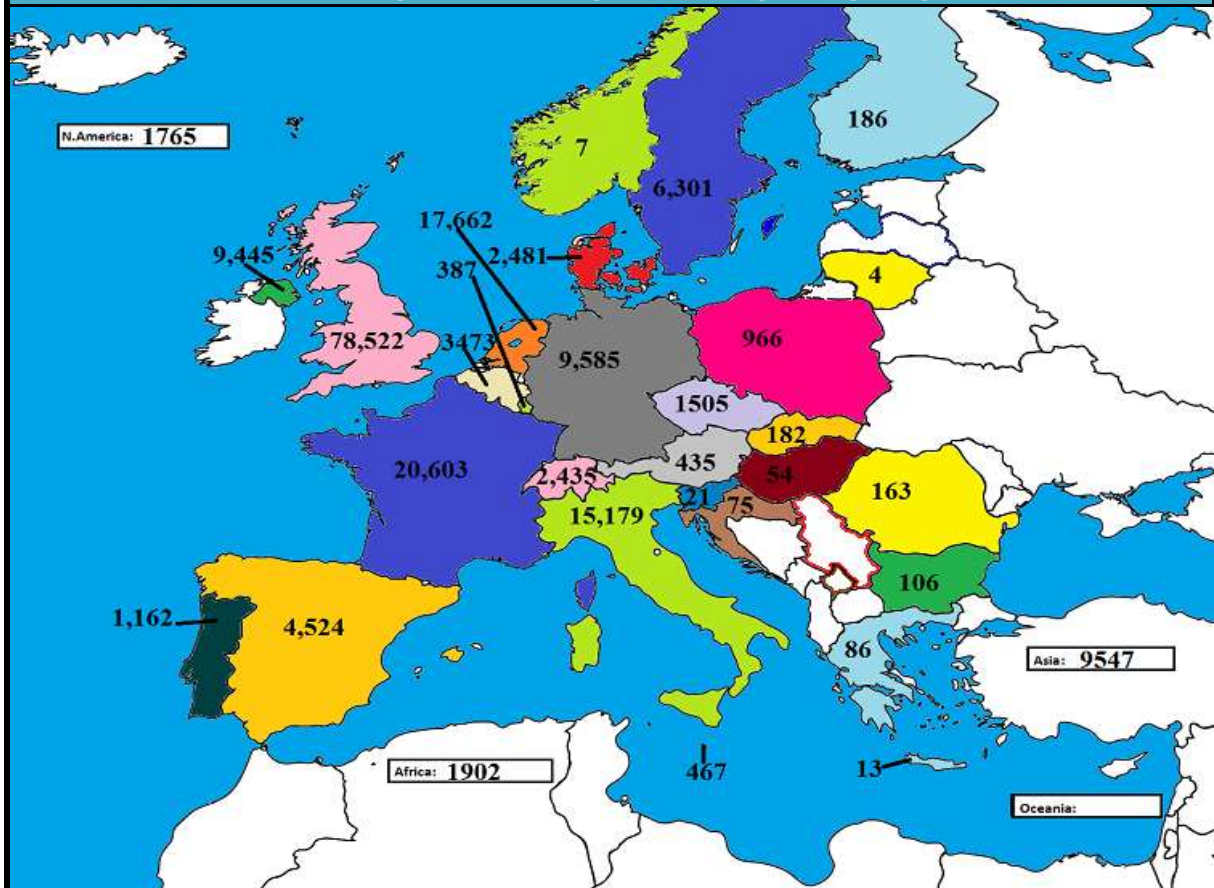
O4 Cow prices ex. VAT



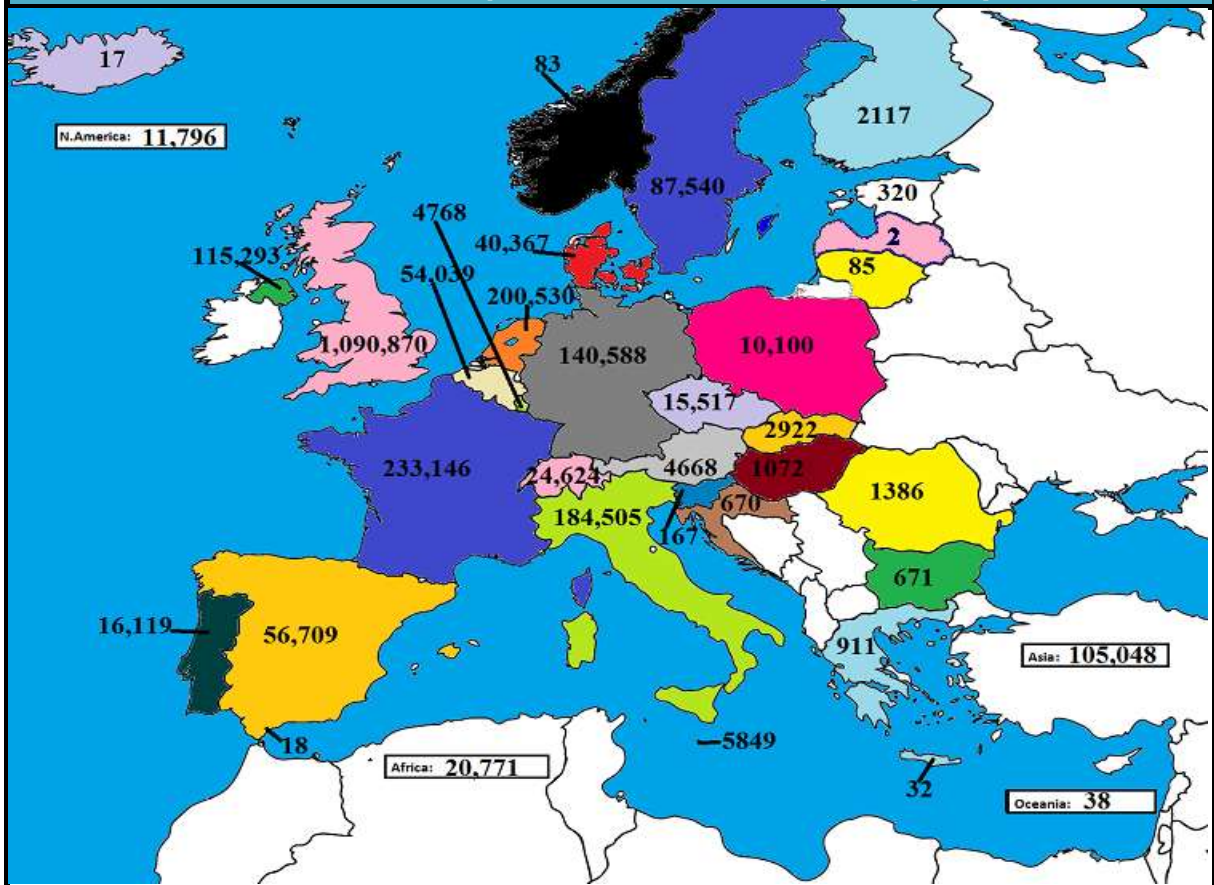




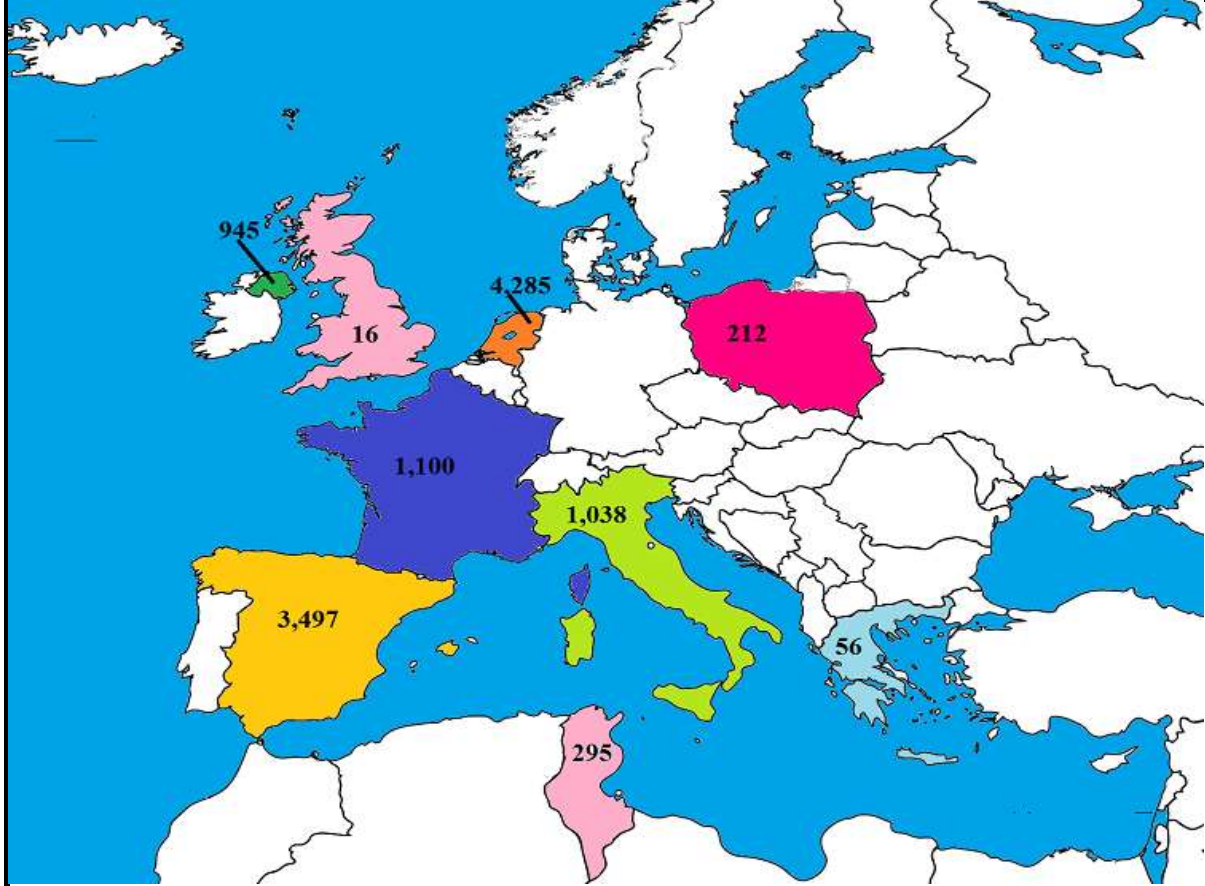
February 2019 Beef exports, €000 (CSO figures)



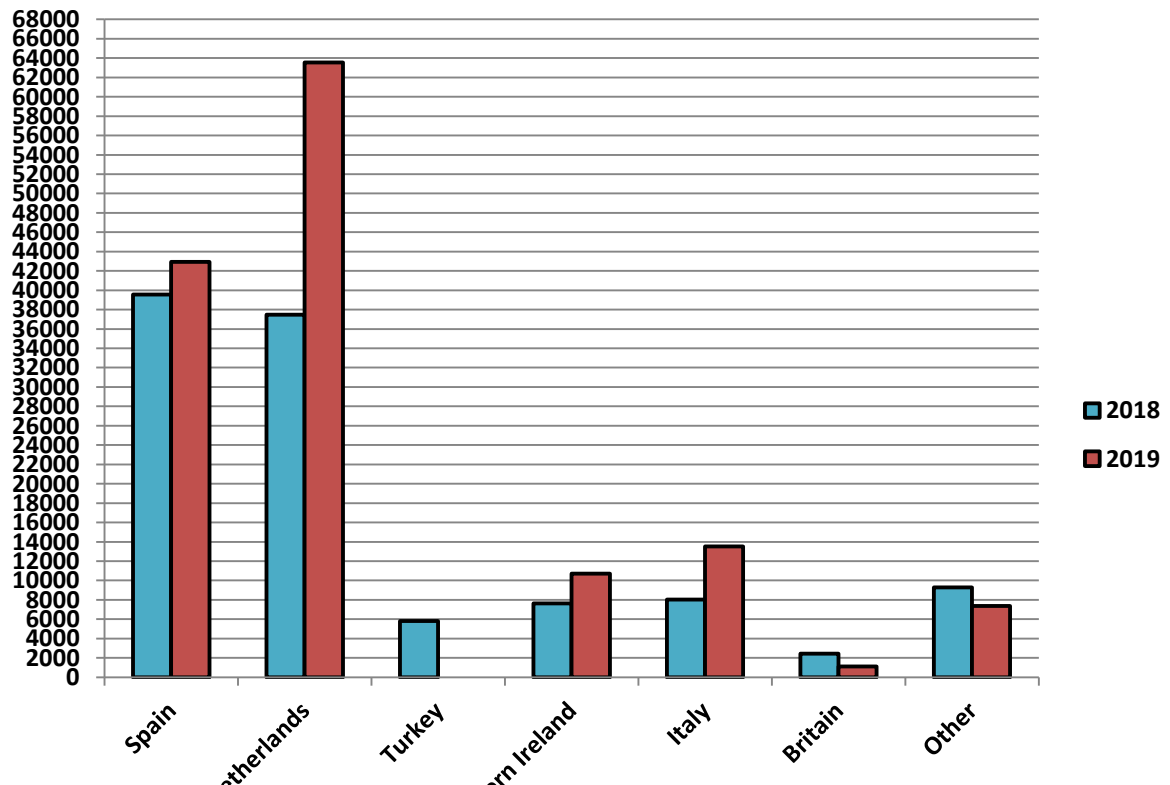
Cumulative beef exports to Dec 2018, €000 (CSO figures)

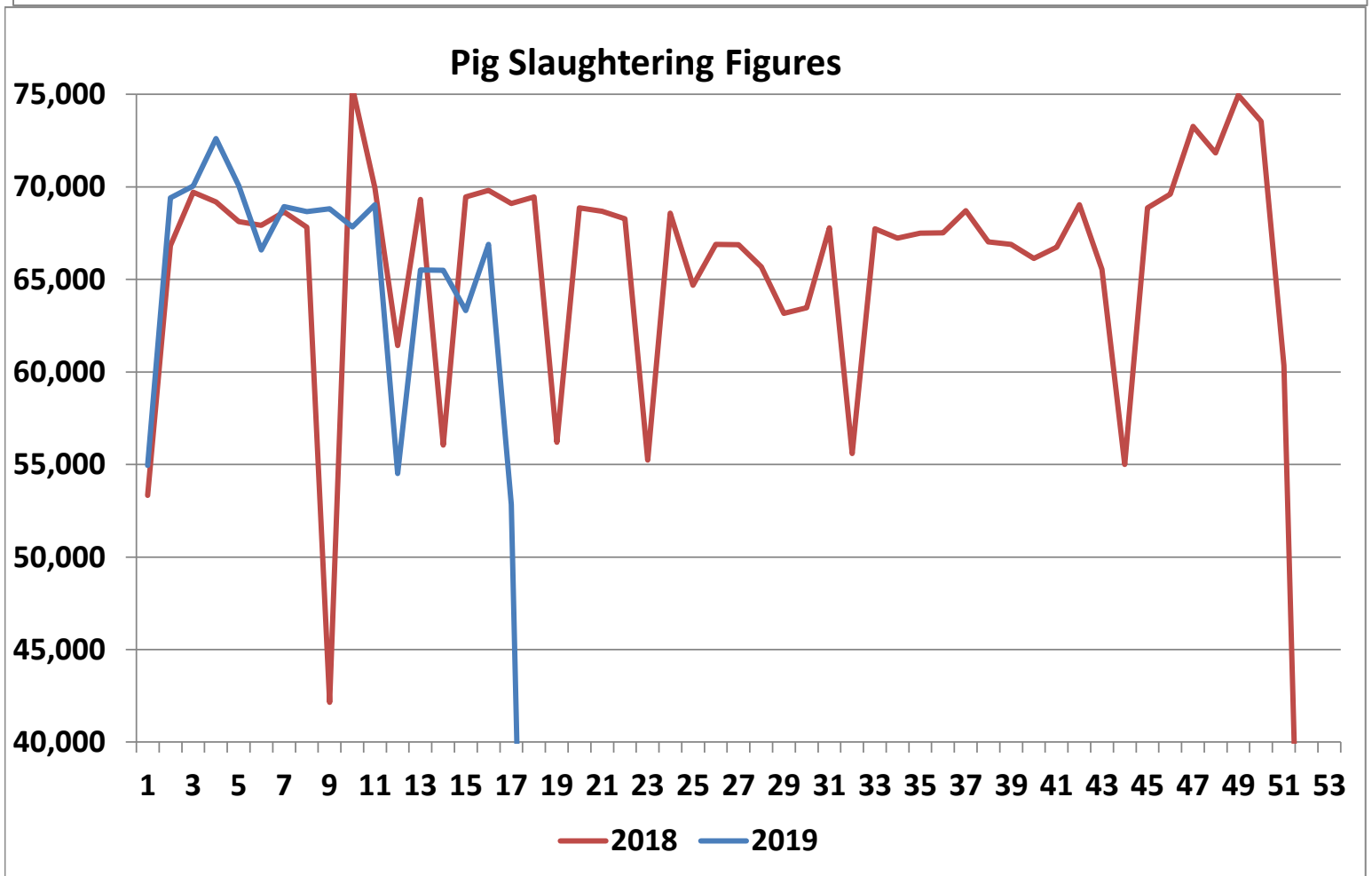
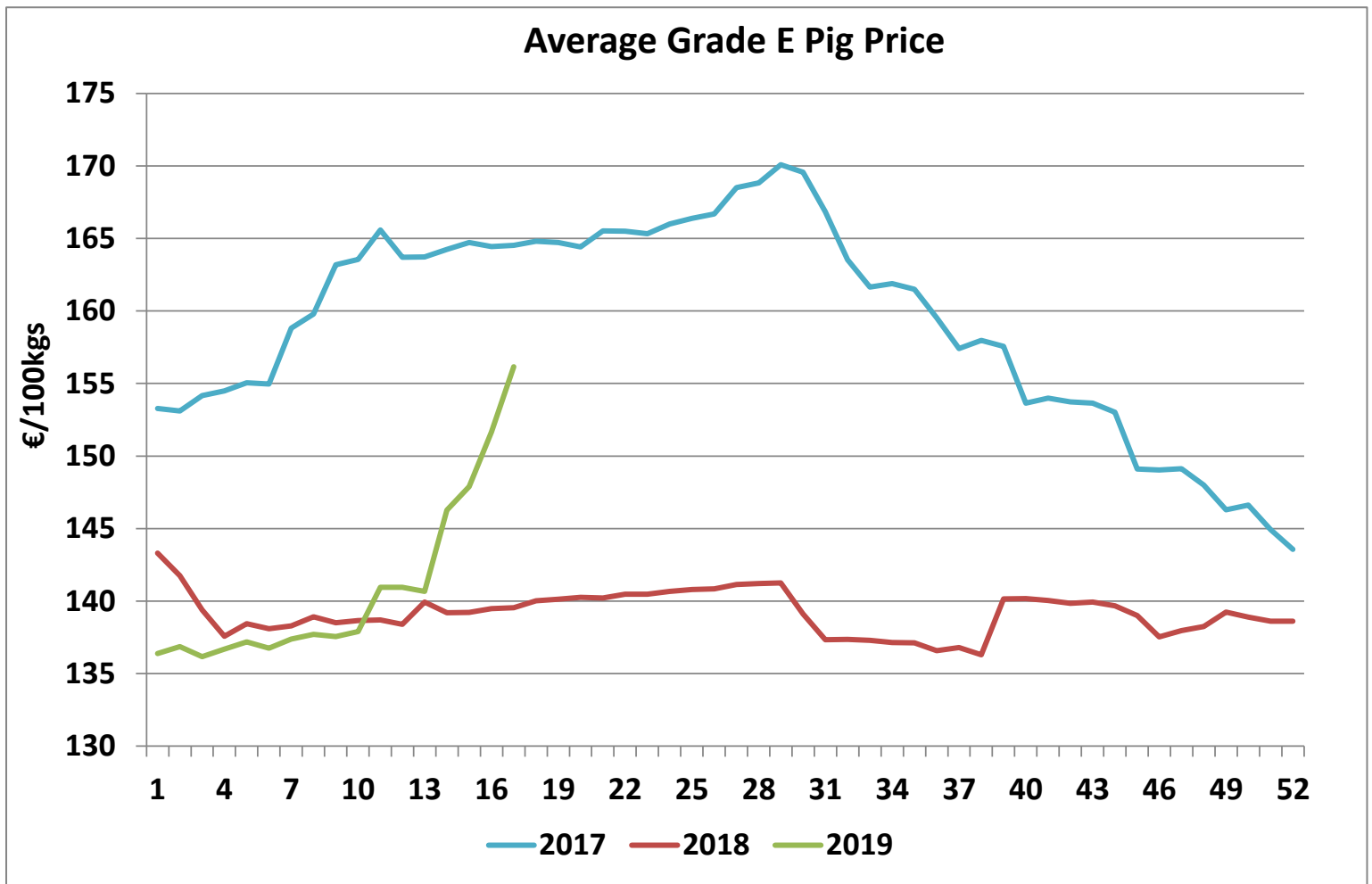


Cattle exported, w/c 15/04/19



Cumulative cattle export figures, 2019





Sheepmeat Information for Week 17 22/04/2019 - 28/04/2019

Irish Prices €/100 kg	2019	2018	Change
Ave Factory Price	535.70	599.16	-10.6%
Ave Mart Price	505.85	613.23	-17.5%
National Ave Price	526.75	603.38	-12.7%
YTD Ave	489.19	505.64	-3.3%

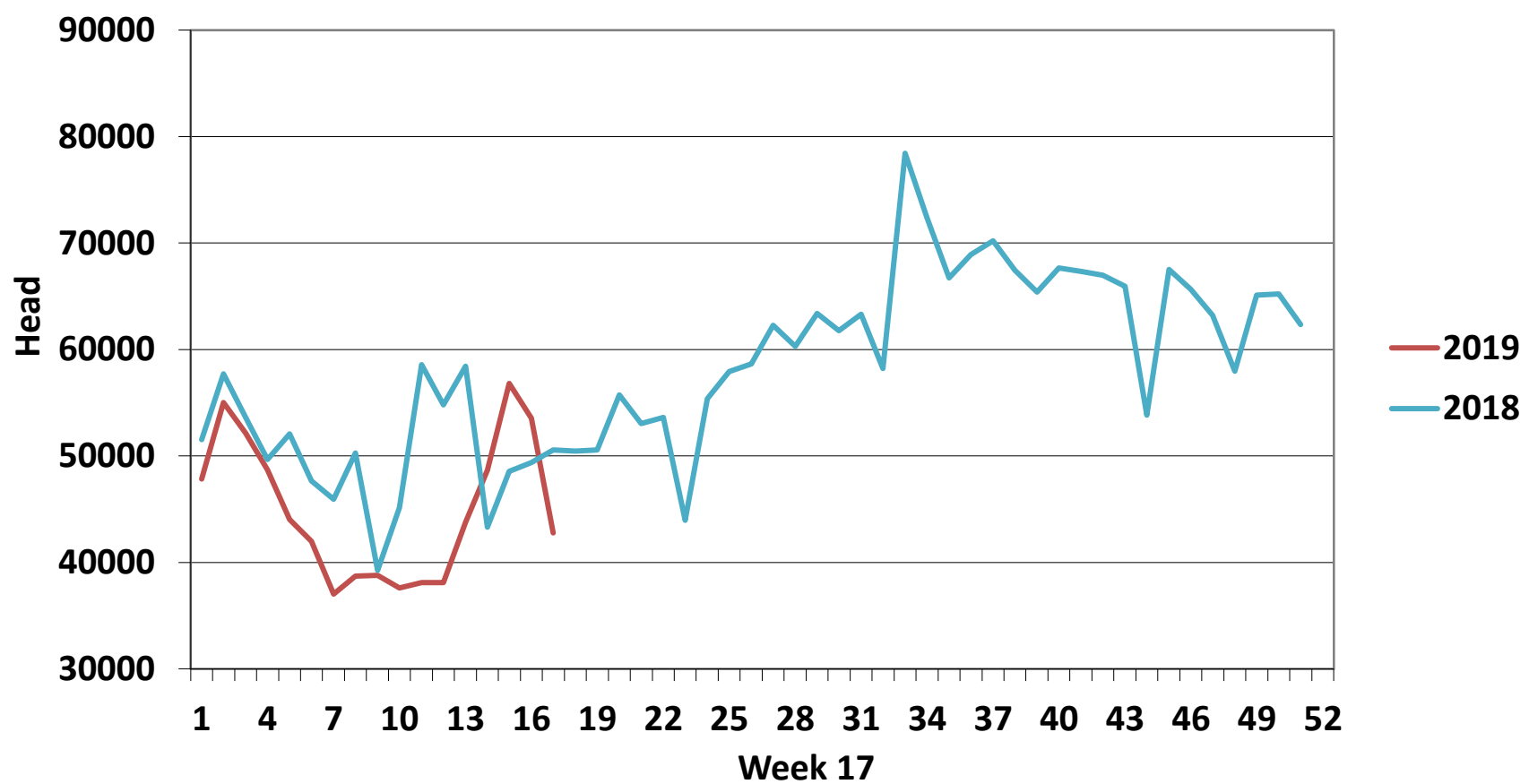
Slaughterings	2019	2018	Change
Weekly	42,794	50,582	-15%
YTD	763,714	856,542	-11%

EU Market Rates Heavy Lambs	€/100kg	% of Community Price
Belgium	558.1	101%
Denmark	472.8	86%
Germany	548.3	99%
Spain	537.8	97%
France	667.0	121%
Croatia	518.8	94%
Ireland	529.1	96%
Italy	588.0	106%
Cyprus	454.0	82%
Latvia	333.8	60%
Lithuania	435.7	79%
Netherlands	558.0	101%
Austria	566.0	102%
Poland	466.0	84%
Romania	284.4	51%
Finland	361.8	65%
Sweden	528.3	96%
Northern Ireland	500.8	91%
Great Britain	541.7	98%
United Kingdom	538.8	97%
Community	552.9	100%

**REPORT ON SLAUGHTERING AT SHEEP EXPORT PREMISES
WEEK 17**

CATEGORY	2019		2018		DIFFERENCE	
	Weekly	Cumulative	Weekly	Cumulative	Weekly	Cumulative
Lambs/Hoggets	30,373	613,720	36,928	707,835	-6555	94,115
Spring Lambs	6,192	31,666	3,940	12,707	2,252	18,959
Ewes and Rams	6,225	118,321	9,704	135,932	-3,479	17,611
Light Lambs	4	7	10	68	-6	61
TOTAL	42,794	763,714	50,582	856,542	-7,788	-92,828

Weekly Sheep Slaughtering



Ave. Price €/100 kg for Sheepmeat

