

Meat Market Report

06/05/19 - 12/05/19

Week

19



**An Roinn Talmhaíochta,
Bia agus Mara**

Department of Agriculture,
Food and the Marine

MARKET SUMMARY

Beef

Deadweight Prices c/100Kg (Including VAT)

	U3	U4	R3	R4	O3	O4	P+
Steers	410.0	411.3	399.0	403.0	381.9	387.9	360.7
Heifers	426.8	424.3	412.3	412.4	393.5	394.8	358.1
Young Bulls	394.3	391.4	380.1	377.1	363.4	356.1	344.4
Cows			334.1	333.2	313.0	313.7	306.0

Liveweight Prices

*Bull Calf Average Price	€148.4 per head (Excluding VAT)
**Young Store Average Price	€231.0 per 100kg (Excluding VAT)
***Yearling (male & female) Price	€208.5 per 100kg (Excluding VAT)

* Aged 8-28 days ** Aged 180-364 days, Male & Female ***age 365-730 days

Slaughterings

29,505 cattle slaughtered this week, of which steers were 9,563 (32%), heifers 9,245 (31%), young bulls 3,387 (11%) and cows 6,350 (21%). Total YTD slaughter is 653,163 compared to 621,004 in 2018, a 5% increase.

Live Trade

13,060 cattle were exported in the week commencing 29/04/2019*; 9,722 to EU (Except NI). Live exports for 2019 amount to 176,259 compared to 127,275 in 2018, up 38% on 2018 levels.

*This data is provisional and subject to revision.

The next meeting of the Management Committee for the Common Organisation of Agricultural Markets (Animal Products Sector) is 23rd May 2019

CONTENTS:

Page 2: Market Summary Beef
 Page 3: Market Summary Other Meats
 Page 4: Beef Price and Slaughter Summary
 Page 5: Comparative Beef Prices
 Page 6: Steer and Young Bull Price
 Page 7: Heifer and Cow Graphs
 Page 8: Price and Slaughter Graphs
 Page 9: Liveweight Beef Graphs

Page 10: Beef Export Maps
 Page 11: Beef Export Info
 Page 12: Pig price and slaughter graphs
 Page 13: Sheep prices and slaughter
 Page 15: Sheep price and slaughter graphs

MARKET SUMMARY

Pigmeat

Grade E Pig
Prices (Ex.
VAT)

The Grade E Pig price for week commencing 06/05/2019 was €165.27 per 100Kg compared to €140.12 in the same week last year, which represents a 3% increase.

Slaughtering

54,992 pigs were slaughtered in week 19 of which 1,741 were sows. The cumulative figure for pig slaughterings in 2019 is 1,236,093 which is level with the same point last year.

Sheepmeat

Sheepmeat
Prices (Ex.
VAT)

The national average price for the week commencing 06/05/2019 was €529.84 per 100Kg, a decrease of 13% over the same week last year.

Slaughtering

50,485 sheep were slaughtered at sheep export premises the week commencing 06/05/2019, compared to 50,580 in the same week of 2018. Sheep slaughterings for 2019 are 9% down on 2018 at 871,006 head.

Live Trade

Total live exports to European Countries stood at 20,769 head to the end of 2018.

Poultry

Slaughtering

Cumulative poultry slaughterings for 2019* stand at 36,714,406 birds at the end of week 18, up 9% compared to the same period last year.

*Latest Figures are provisional and subject to change

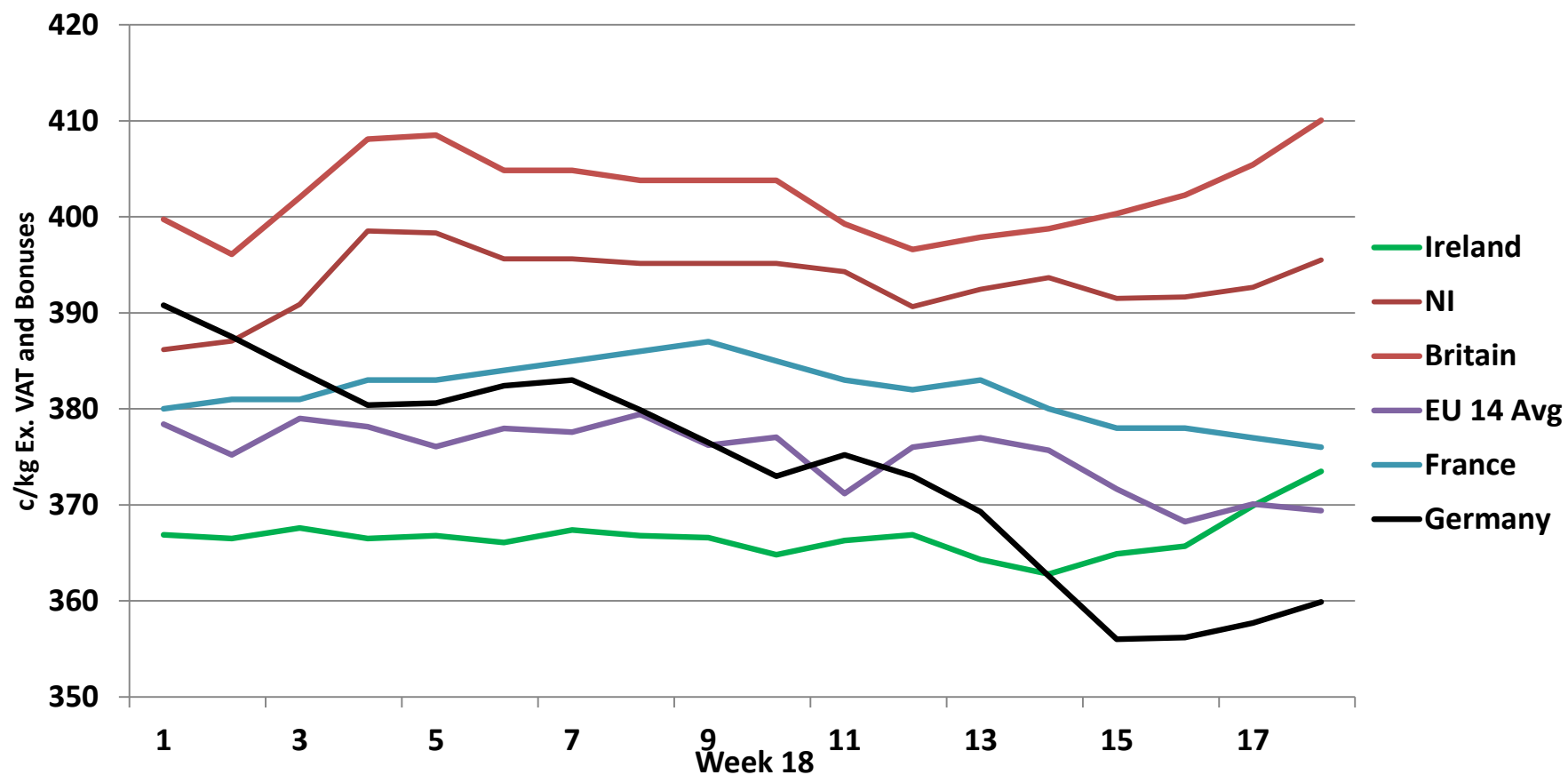
Dead Weight Prices	W/C	W/C	Same week 2018	% change prev week	% change 2018
	06/05/19	29/04/19	07/05/18		
Steers (R3) (c/kg)	378.6	373.6	404.1	1.3%	-6.3%
Heifers (R3) (c/kg)	391.2	385.7	415.7	1.4%	-5.9%
Young Bulls (U3) (c/kg)	374.1	367.4	410.8	1.8%	-8.9%
Cows (04) (c/kg)	297.6	287.5	342.5	3.5%	-13.1%

Live Weight Prices	W/C	W/C	Same week 2017	% change previous week	% change 2018
	06/05/19	29/04/19	07/05/18		
Yearlings (Male) (Aged 365 - 730 days) - (€/100Kg)	203	205	208	-1.0%	-2.4%
Yearlings (Female) (Aged 365 - 730 days) - (€/100Kg)	214	212	215	0.9%	-0.5%
Young Stores (Male & Female) (Aged 180 - 364 days) - (€/100Kg)	231	234	239	-1.3%	-3.3%
Bull Calf (€/head) Dairy	132.1	127.7	160.7	3.5%	-17.8%
Bull Calf (€/head) Beef	164.7	161.8	201.4	1.8%	-18.2%
Bull Calf (€/head) Average	148.4	144.7	181.0	2.5%	-18.0%

Slaughter Figures	% of weekly figures	W/C	Same week 2018	Year to Date		Change 2019 v 2018	
		06-May-19		2019	2018	Head	%
Steers	32.4%	9,563	10,593	212,962	214,679	-1,717	-0.8%
Cows	21.5%	6,350	6,590	128,564	131,775	-3,211	-2.4%
Heifers	31.3%	9,245	8,239	200,508	181,069	19,439	10.7%
Young Bulls	11.5%	3,387	3,367	97,398	82,412	14,986	18.2%
Mature Bulls	3.3%	960	643	13,729	11,069	2,660	24.0%
Total	100%	29,505	29,432	653,161	621,004	32,157	5.2%

Live Exports	W/C	Same week	W/C	Year to Date		Change 2019 v 2018	
	29-Apr-19	2018	22-Apr-19	2019	2018	Head	%
Northern Ireland	999	419	827	12,654	5,991	6,663	111%
EU Except NI	9,722	7,675	11,397	155,871	114,612	41,259	36%
Third Countries	2,339	0	2,860	7,734	6,672	1,062	-
Total	13,060	8,094	15,084	176,259	127,275	48,984	38%
Calves YTD:	146,342			Adult YTD:Cattle		29,788	

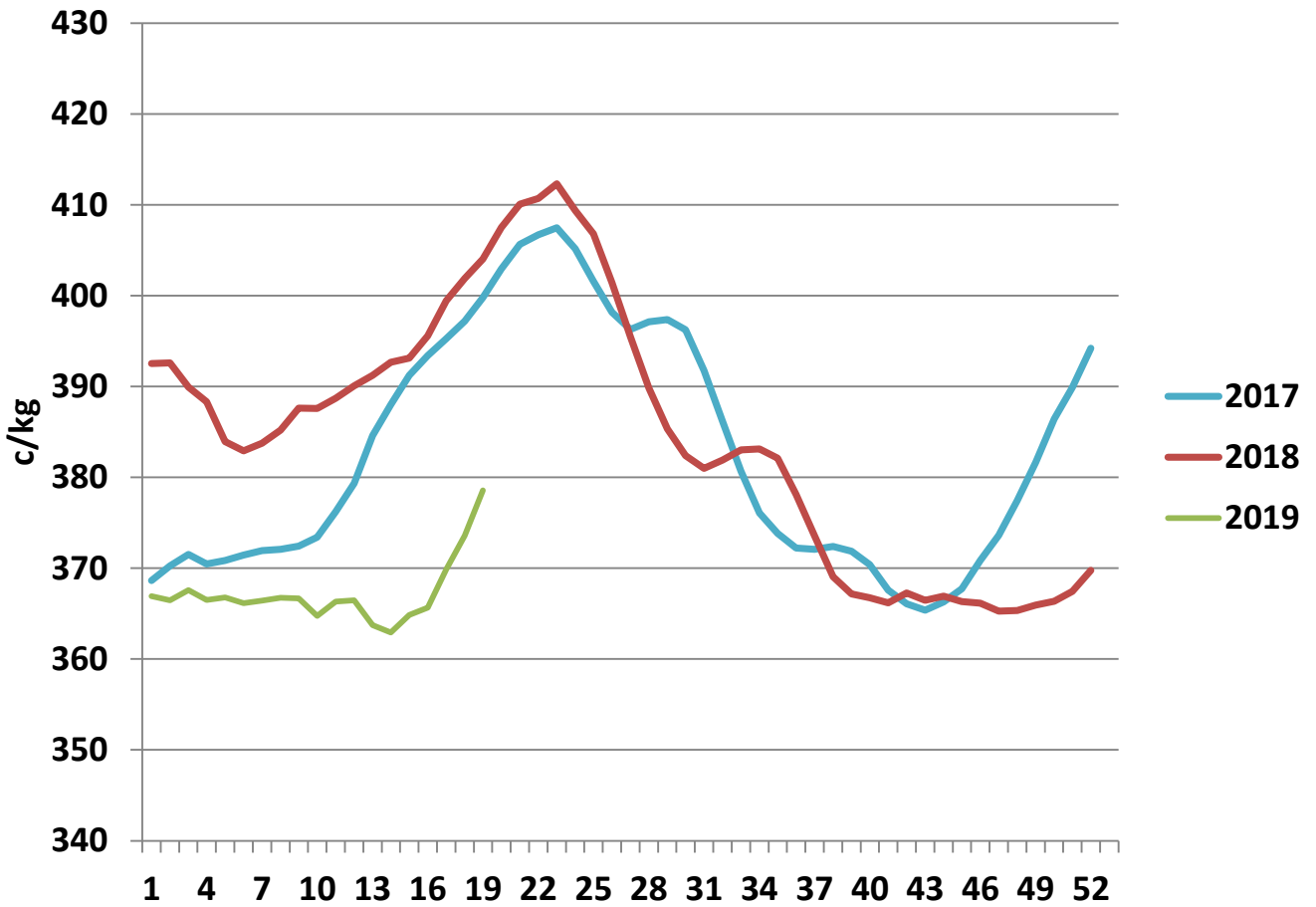
Irish Deadweight Cattle Prices vs Selected Other Markets, 2019



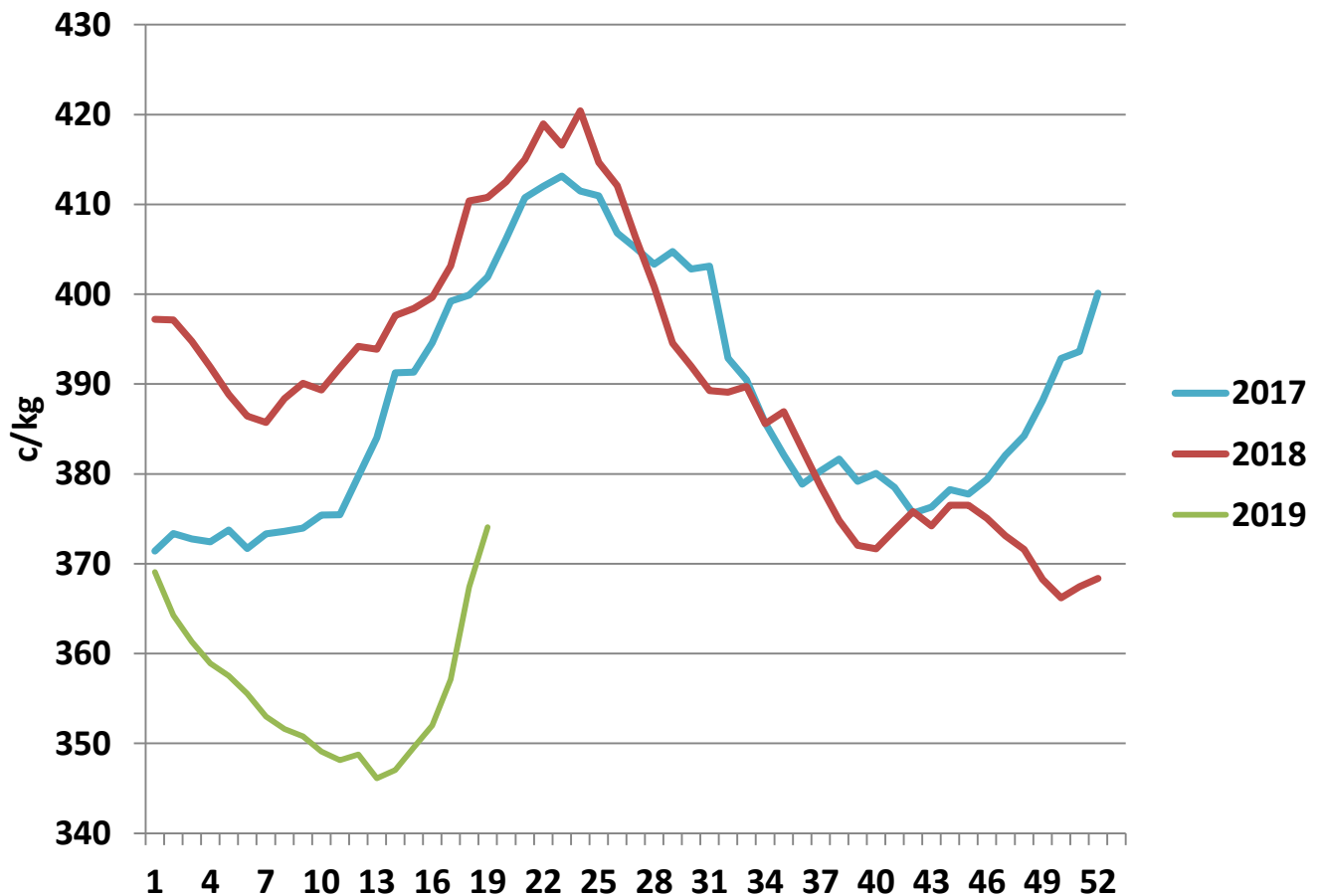
Livestock Pricing

	Ireland	NI	Britain	EU 14 Average	France	Germany
W/C 29/04/19	373.5	395.52	410.07	369.04	376	359.9

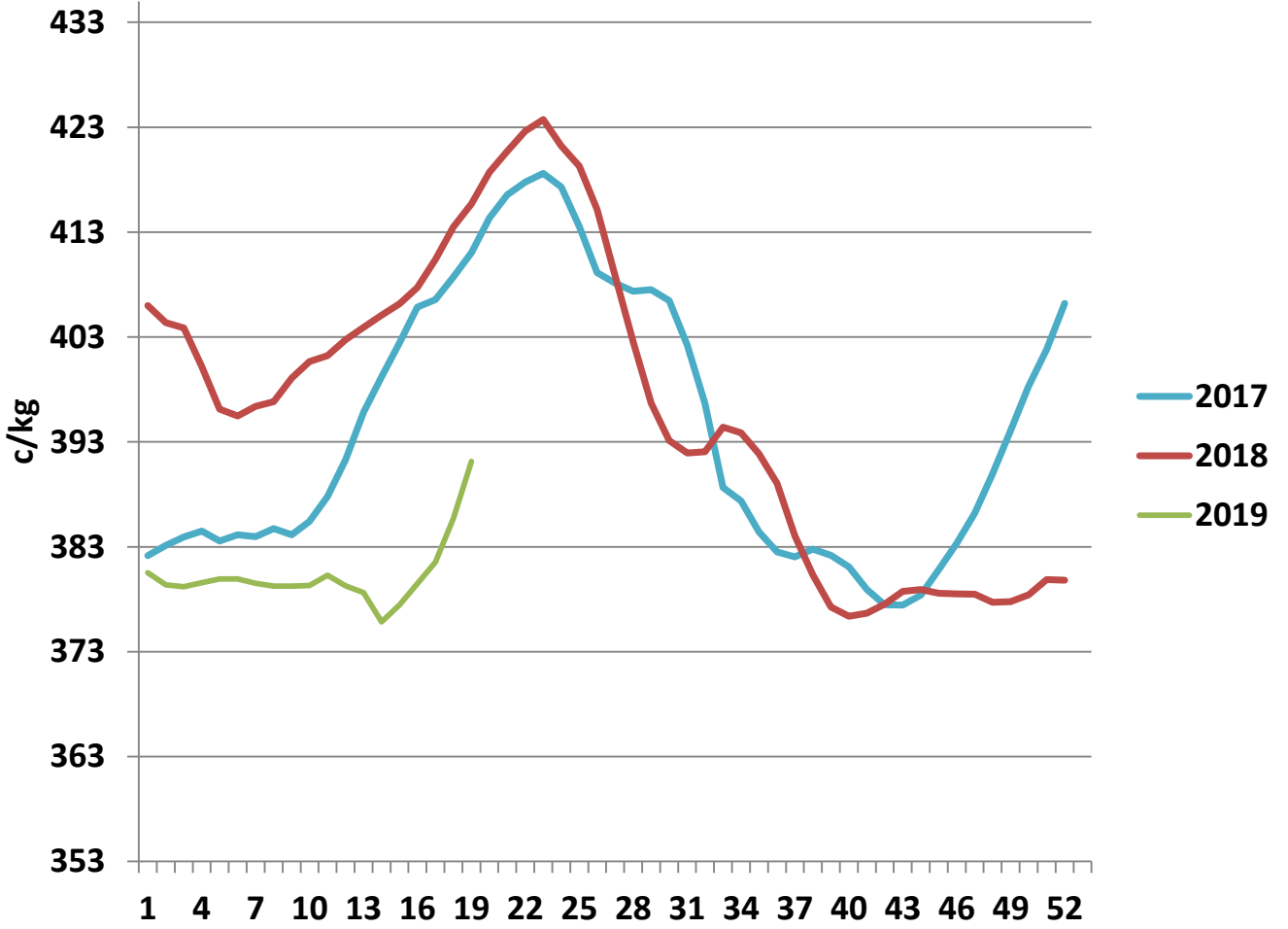
R3 Steer prices ex. VAT



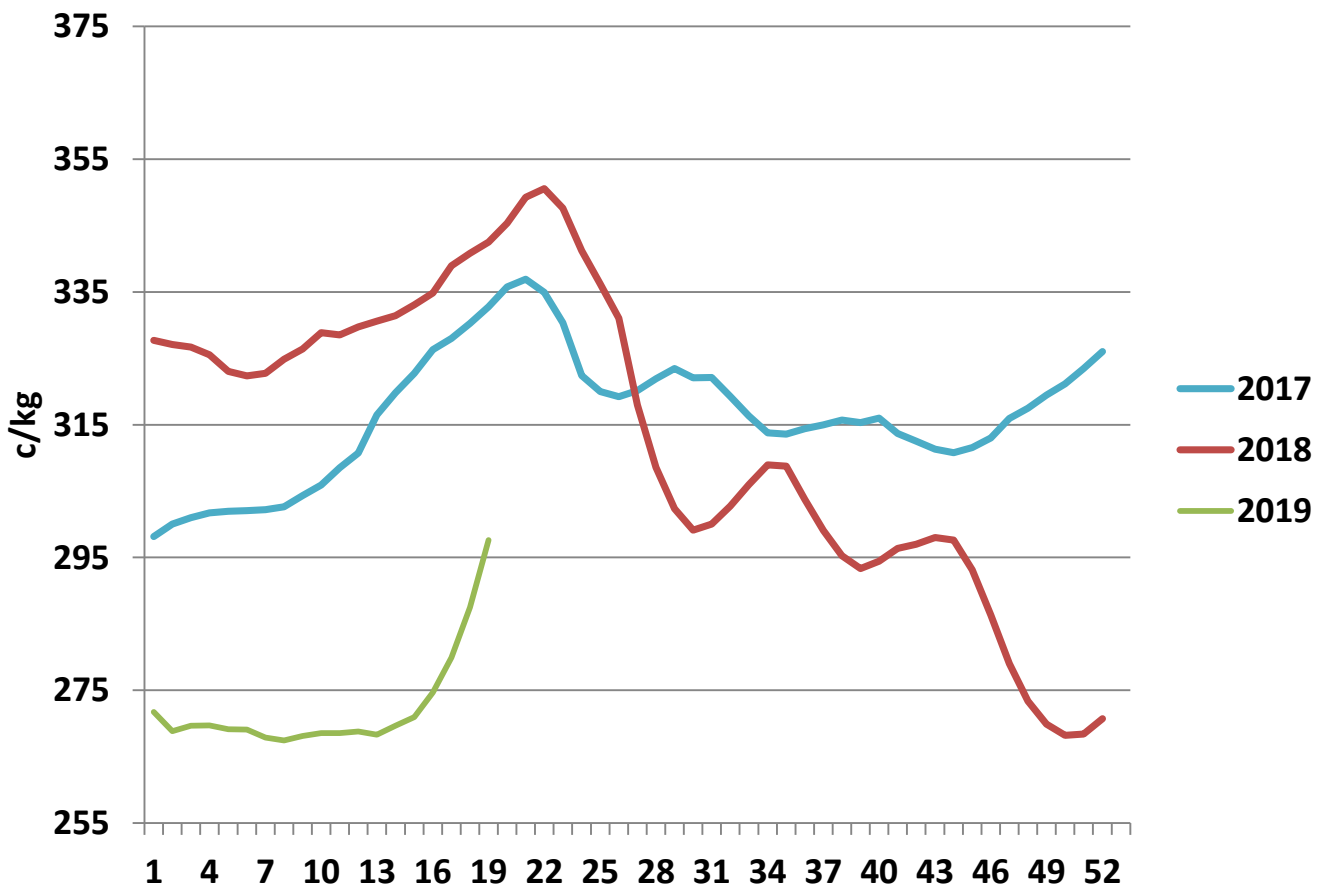
U3 Young Bull prices ex. VAT



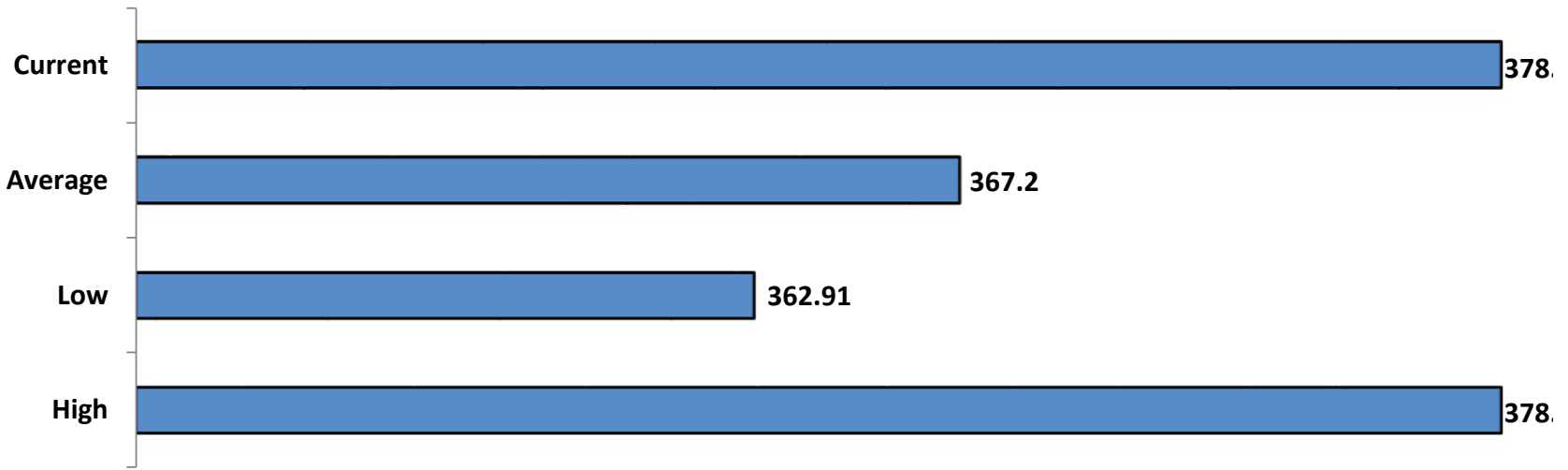
R3 Heifer prices ex. VAT



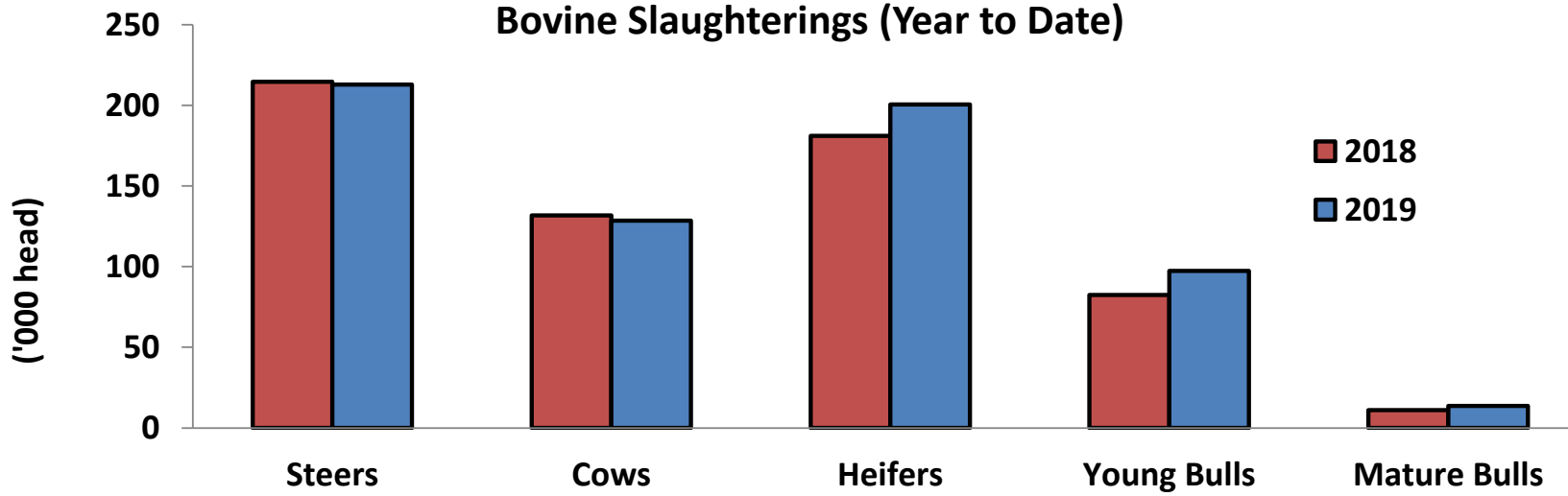
O4 Cow prices ex. VAT



6 Month R3 Steer Statistics

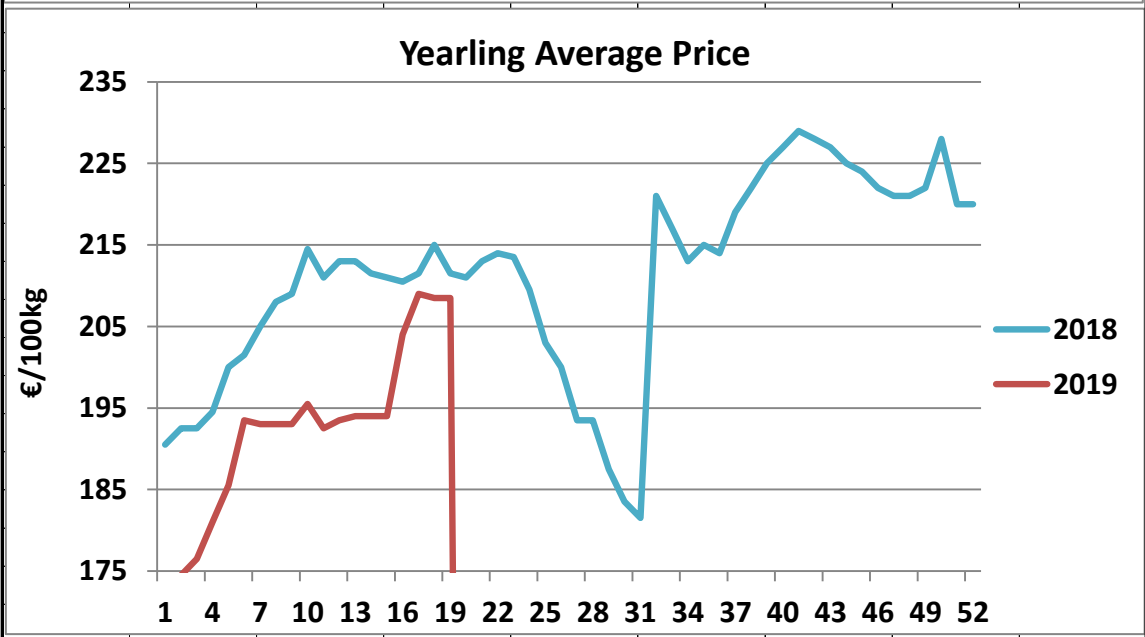
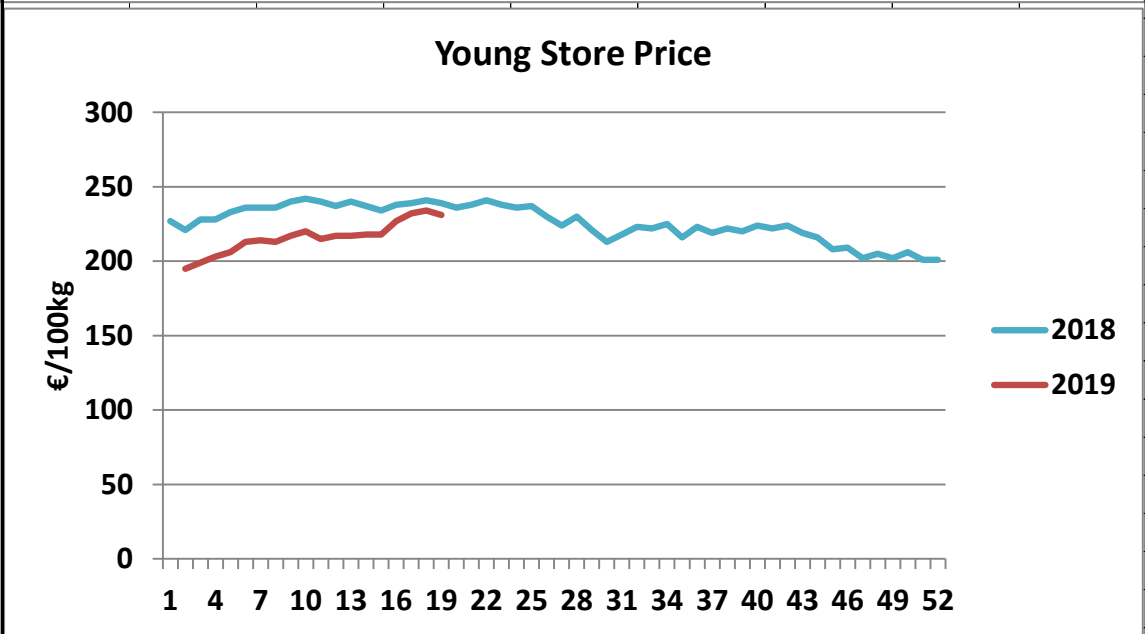
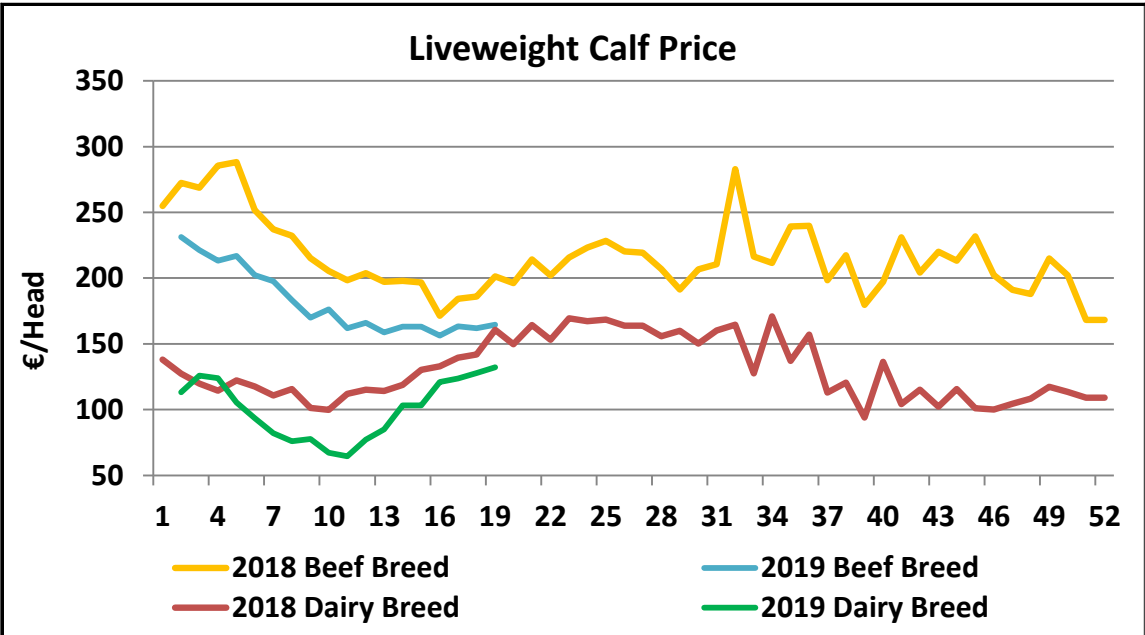


Bovine Slaughtering (Year to Date)

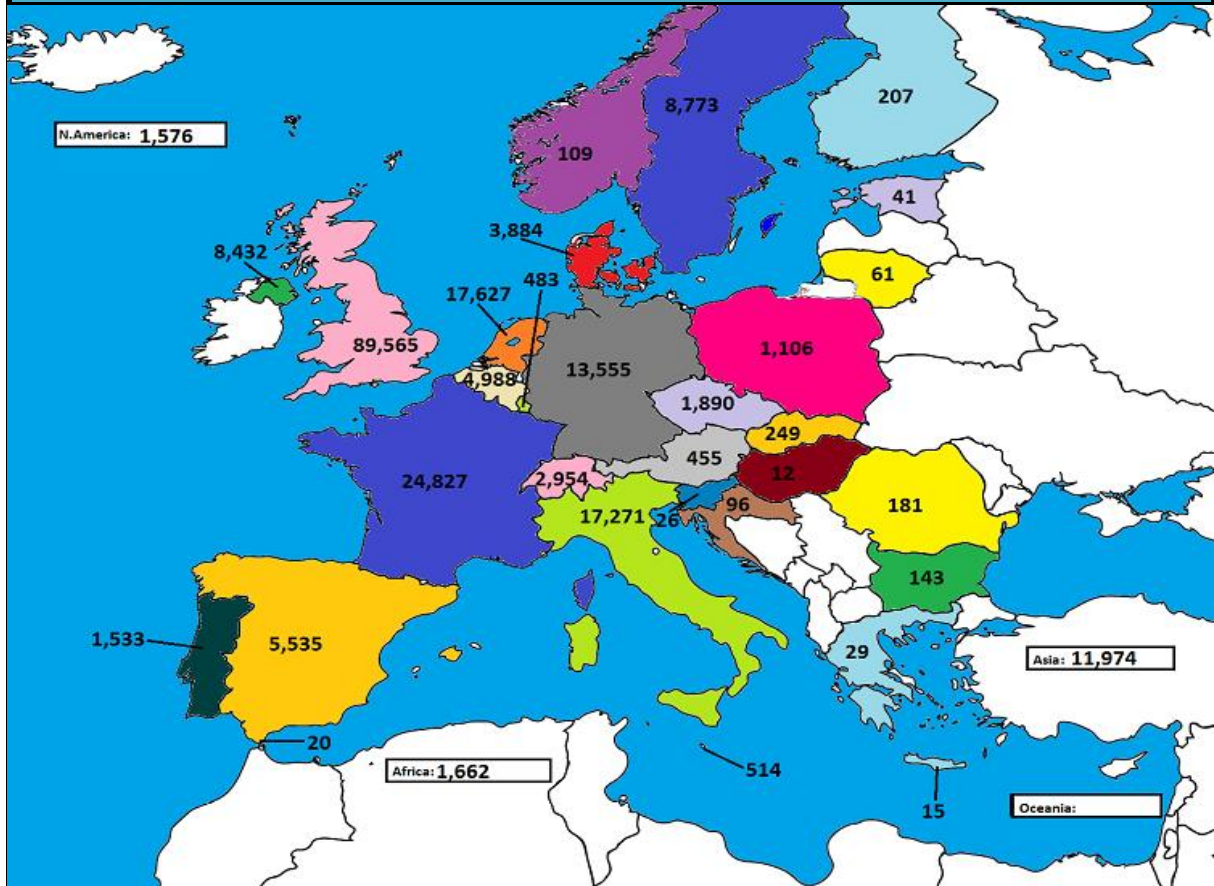


Kill vs Price

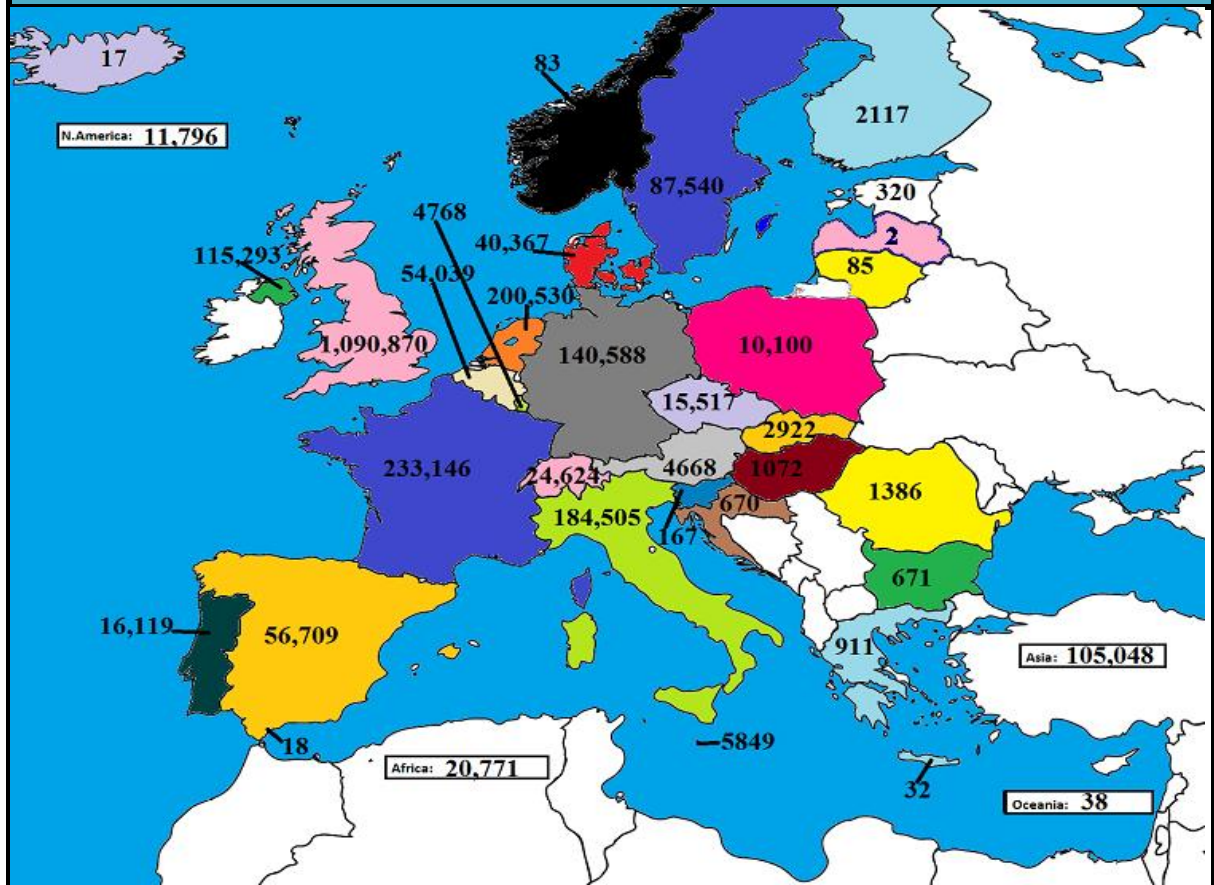




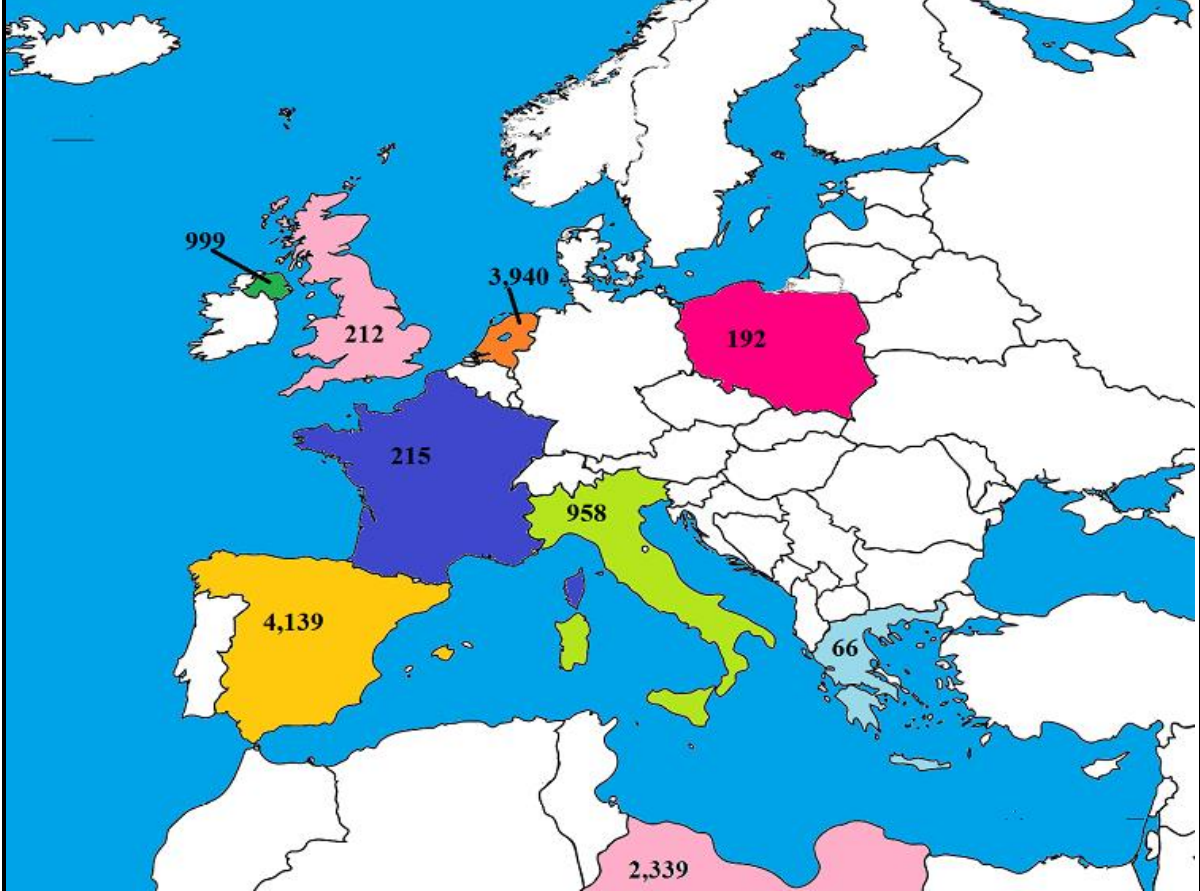
March 2019 Beef exports, €000 (CSO figures)



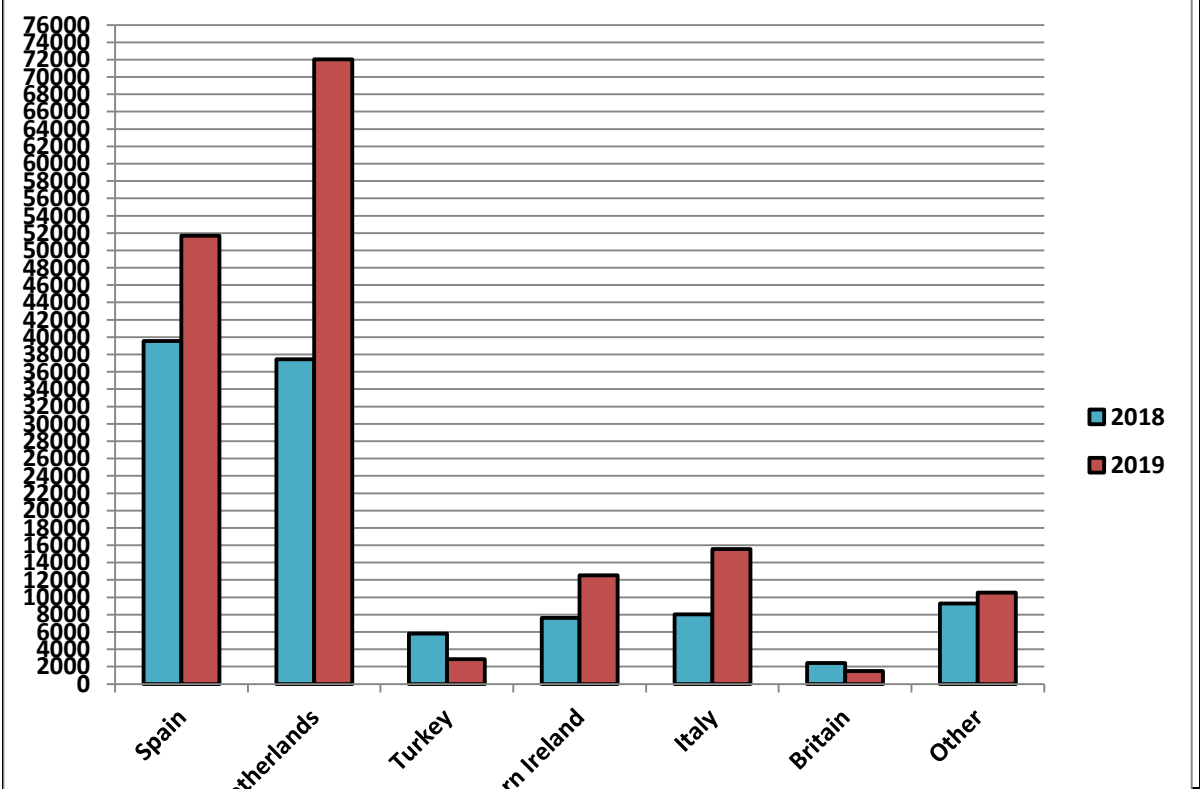
Cumulative beef exports to Dec 2018, €000 (CSO figures)

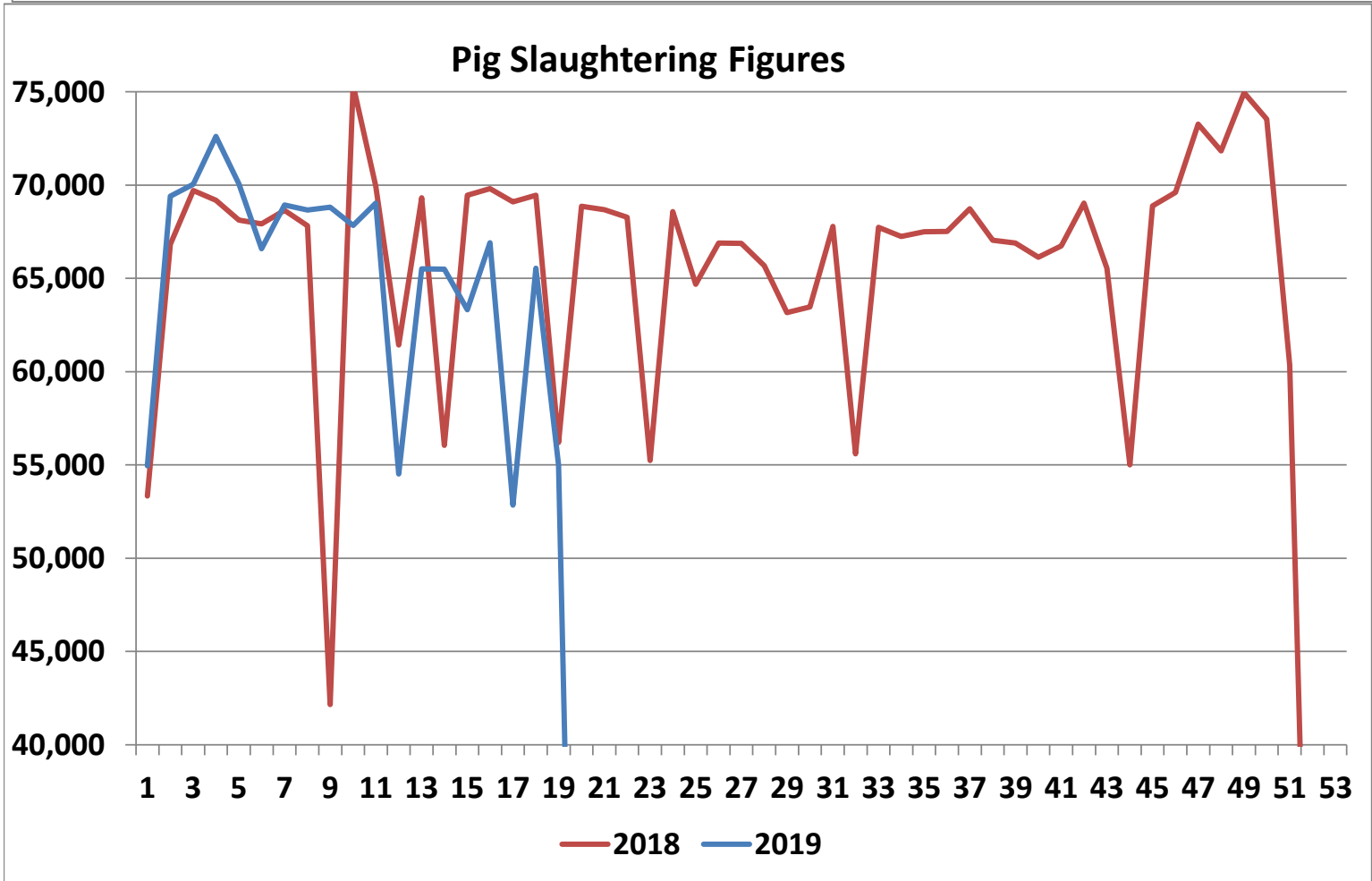
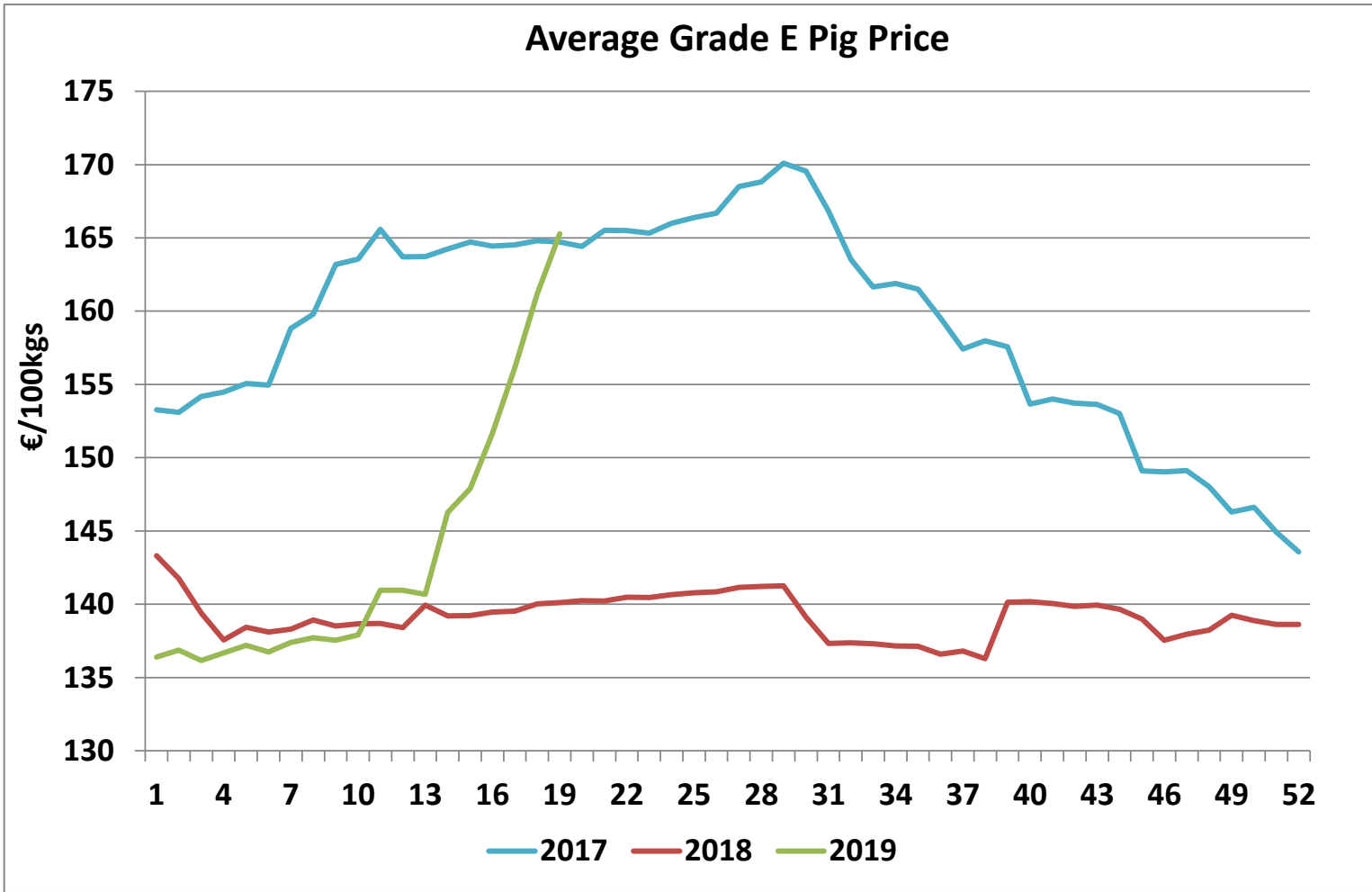


Cattle exported, w/c 29/04/19



Cumulative cattle export figures, 2019





Sheepmeat Information for Week 19 06/05/2019 - 12/05/2019

Irish Prices €/100 kg	2019	2018	Change
Ave Factory Price	539.34	618.70	-12.8%
Ave Mart Price	507.68	583.01	-12.9%
National Ave Price	529.84	607.99	-12.9%
YTD Ave	493.25	515.73	-4.4%

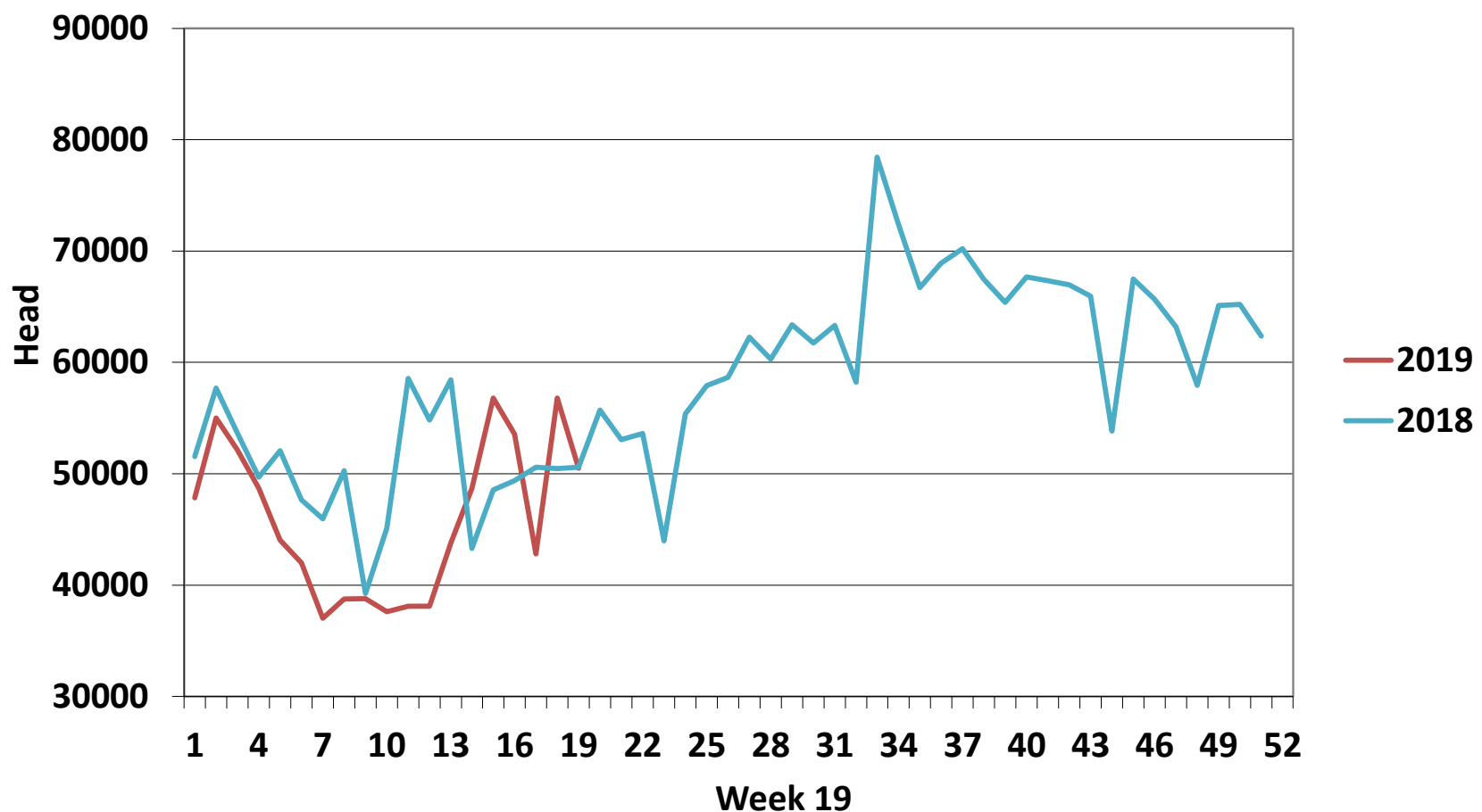
Slaughterings	2019	2018	Change
Weekly	50,485	50,580	0%
YTD	871,006	957,580	-9%

EU Market Rates Heavy Lambs	€/100kg	% of Community Price
Belgium	549.2	99%
Denmark	512.7	93%
Germany	552.3	100%
Spain	532.0	96%
France	652.0	118%
Croatia	568.5	103%
Ireland	525.6	95%
Italy	569.0	103%
Cyprus	453.0	82%
Latvia	419.8	76%
Lithuania	385.4	70%
Netherlands	550.5	100%
Austria	574.0	104%
Poland	429.9	78%
Romania	284.2	51%
Finland	359.4	65%
Sweden	528.3	96%
Northern Ireland	513.1	93%
Great Britain	536.7	97%
United Kingdom	535.0	97%
Community	552.9	100%

**REPORT ON SLAUGHTERING AT SHEEP EXPORT PREMISES
WEEK 19**

CATEGORY	2019		2018		DIFFERENCE	
	Weekly	Cumulative	Weekly	Cumulative	Weekly	Cumulative
Lambs/Hoggets	23,505	672,857	25,121	761,857	-1616	89,000
Spring Lambs	20,740	66,403	17,184	40,825	3,556	25,578
Ewes and Rams	6,240	131,736	8,275	154,825	-2,035	23,089
Light Lambs	-	10	-	73	0	63
TOTAL	50,485	871,006	50,580	957,580	-95	-86,574

Weekly Sheep Slaughtering



Ave. Price €/100 kg for Sheepmeat

