

Meat Market Report

13/05/19 - 19/05/19

Week

20



**An Roinn Talmhaíochta,
Bia agus Mara**

Department of Agriculture,
Food and the Marine

MARKET SUMMARY

Beef

Deadweight Prices c/100Kg (Including VAT)

	U3	U4	R3	R4	O3	O4	P+
Steers	415.3	413.8	406.0	407.1	389.6	393.8	367.2
Heifers	430.0	429.1	417.2	416.8	399.8	400.6	365.1
Young Bulls	401.6	396.9	388.8	387.1	370.2	370.3	354.5
Cows			338.5	337.8	321.4	321.1	315.3

Liveweight Prices

*Bull Calf Average Price	€143.5 per head (Excluding VAT)
**Young Store Average Price	€224.0 per 100kg (Excluding VAT)
***Yearling (male & female) Price	€202.0 per 100kg (Excluding VAT)

* Aged 8-28 days ** Aged 180-364 days, Male & Female ***age 365-730 days

Slaughterings

32,785 cattle slaughtered this week, of which steers were 10,895 (33%), heifers 9,698 (30%), young bulls 3,997 (12%) and cows 6,964 (21%). Total YTD slaughter is 685,946 compared to 652,043 in 2018, a 5% increase.

Live Trade

10,144 cattle were exported in the week commencing 06/05/2019*; 9,234 to EU (Except NI). Live exports for 2019 amount to 186,403 compared to 139,411 in 2018, up 34% on 2018 levels.

*This data is provisional and subject to revision.

The next meeting of the Management Committee for the Common Organisation of Agricultural Markets (Animal Products Sector) is 23rd May 2019

CONTENTS:

Page 2: Market Summary Beef
 Page 3: Market Summary Other Meats
 Page 4: Beef Price and Slaughter Summary
 Page 5: Comparative Beef Prices
 Page 6: Steer and Young Bull Price
 Page 7: Heifer and Cow Graphs
 Page 8: Price and Slaughter Graphs
 Page 9: Liveweight Beef Graphs

Page 10: Beef Export Maps
 Page 11: Beef Export Info
 Page 12: Pig price and slaughter graphs
 Page 13: Sheep prices and slaughter
 Page 15: Sheep price and slaughter graphs

MARKET SUMMARY

Pigmeat

Grade E Pig
Prices (Ex.
VAT)

The Grade E Pig price for week commencing 13/05/2019 was €166.59 per 100Kg compared to €140.25 in the same week last year, which represents a 19% increase.

Slaughtering

67,908 pigs were slaughtered in week 20 of which 1,979 were sows. The cumulative figure for pig slaughterings in 2019 is 1,304,001 which is level with the same point last year.

Sheepmeat

Sheepmeat
Prices (Ex.
VAT)

The national average price for the week commencing 13/05/2019 was €513.59 per 100Kg, a decrease of 16% over the same week last year.

Slaughtering

51,908 sheep were slaughtered at sheep export premises the week commencing 13/05/2019, compared to 55,725 in the same week of 2018. Sheep slaughterings for 2019 are 9% down on 2018 at 922,914 head.

Live Trade

Total live exports to European Countries stood at 20,769 head to the end of 2018.

Poultry

Slaughtering

Cumulative poultry slaughterings for 2019* stand at 38,661,608 birds at the end of week 19, up 9% compared to the same period last year.

*Latest Figures are provisional and subject to change

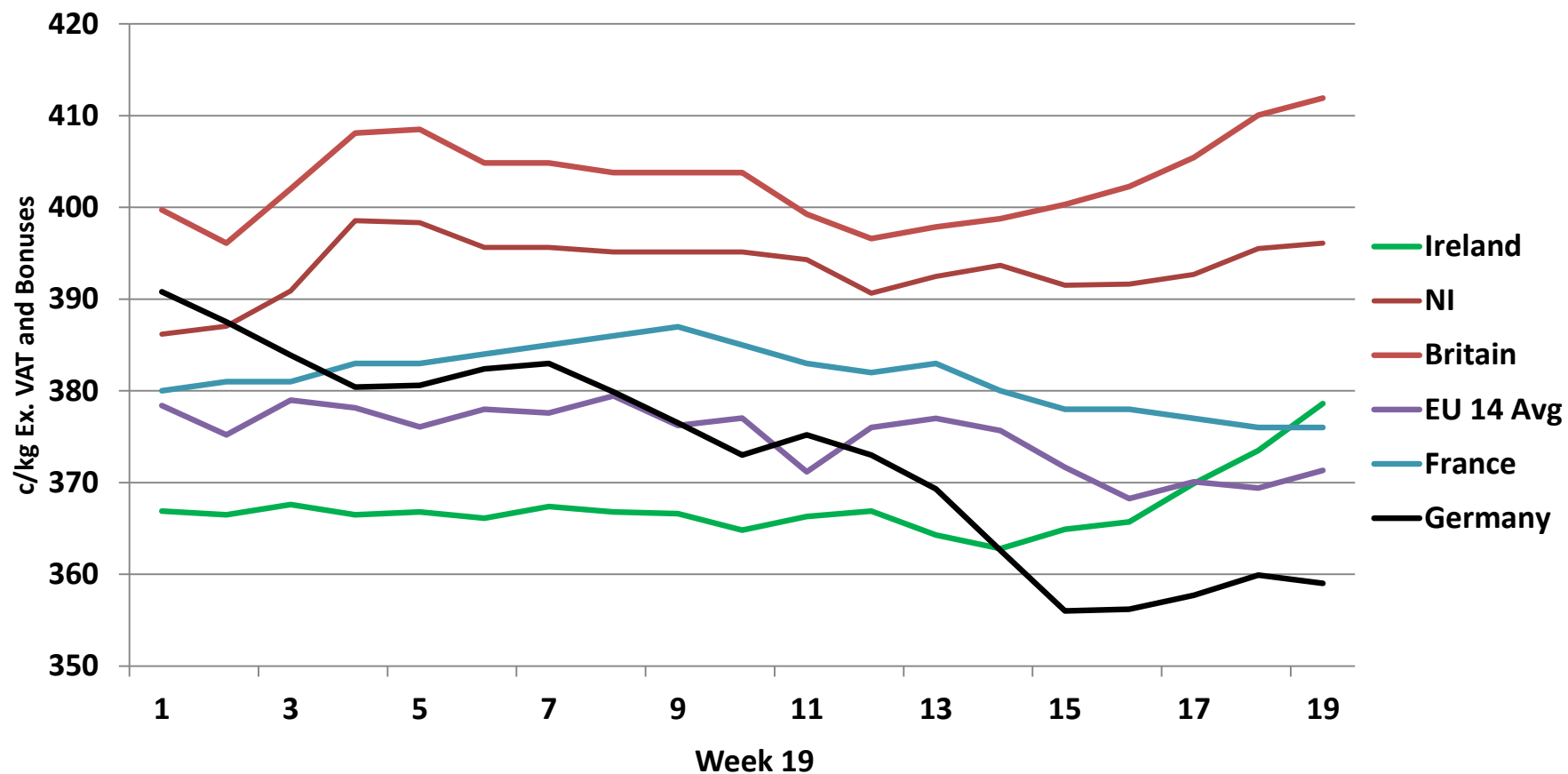
Dead Weight Prices	W/C	W/C	Same week 2018	% change prev week	% change 2018
	13/05/19	06/05/19	14/05/18		
Steers (R3) (c/kg)	385.2	378.6	407.5	1.7%	-5.5%
Heifers (R3) (c/kg)	395.9	391.2	418.7	1.2%	-5.5%
Young Bulls (U3) (c/kg)	381.1	374.1	412.5	1.9%	-7.6%
Cows (O4) (c/kg)	304.7	297.6	345.3	2.4%	-11.8%

Live Weight Prices	W/C	W/C	Same week 2018	% change previous week	% change 2018
	13/05/19	06/05/19	14/05/18		
Yearlings (Male) (Aged 365 - 730 days) - (€/100Kg)	197	203	209	-3.0%	-5.7%
Yearlings (Female) (Aged 365 - 730 days) - (€/100Kg)	207	214	213	-3.3%	-2.8%
Young Stores (Male & Female) (Aged 180 - 364 days) - (€/100Kg)	224	231	236	-3.0%	-5.1%
Bull Calf (€/head) Dairy	128.9	132.1	149.7	-2.5%	-13.9%
Bull Calf (€/head) Beef	158.1	164.7	196.2	-4.0%	-19.4%
Bull Calf (€/head) Average	143.5	148.4	172.9	-3.3%	-17.0%

Slaughter Figures	% of weekly figures	W/C	Same week 2018	Year to Date		Change 2019 v 2018	
		13-May-19		2019	2018	Head	%
Steers	33.2%	10,895	11,309	223,857	225,931	-2,074	-0.9%
Cows	21.2%	6,964	6,881	135,528	138,656	-3,128	-2.3%
Heifers	29.6%	9,698	8,246	210,206	189,315	20,891	11.0%
Young Bulls	12.2%	3,997	3,871	101,395	86,283	15,112	17.5%
Mature Bulls	3.8%	1,231	789	14,960	11,858	3,102	26.2%
Total	100%	32,785	31,096	685,946	652,043	33,903	5.2%

Live Exports	W/C	Same week	W/C	Year to Date		Change 2019 v 2018	
	6-May-19	2018	22-Apr-19	2019	2018	Head	%
Northern Ireland	910	612	827	13,564	6,603	6,961	105%
EU Except NI	9,234	9,396	11,397	165,105	124,008	41,097	33%
Third Countries	0	2,128	2,860	7,734	8,800	-1,066	-
Total	10,144	12,136	15,084	186,403	139,411	46,992	34%
Calves YTD:		154,764		Adult YTD:Cattle		31,510	

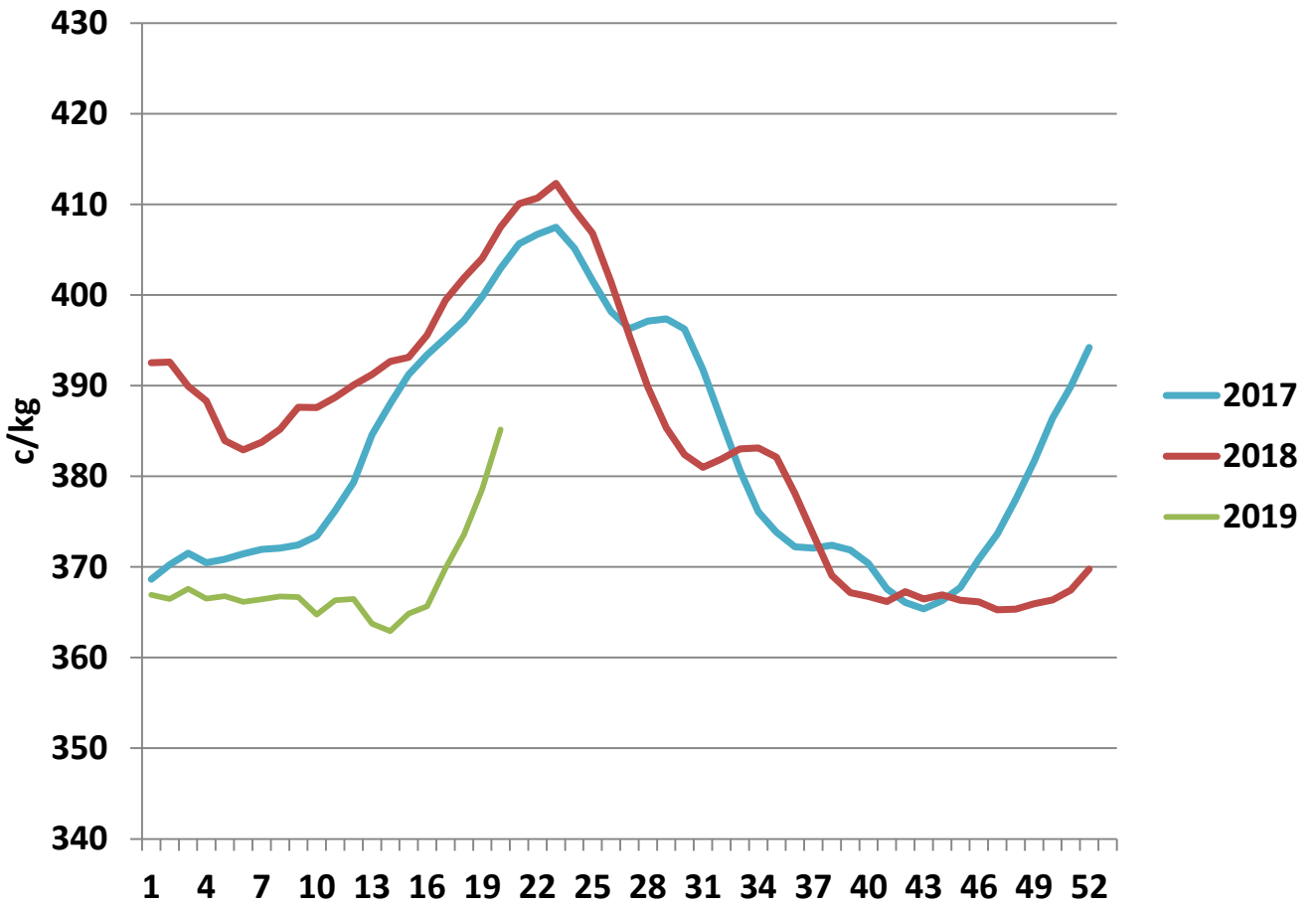
Irish Deadweight Cattle Prices vs Selected Other Markets, 2019



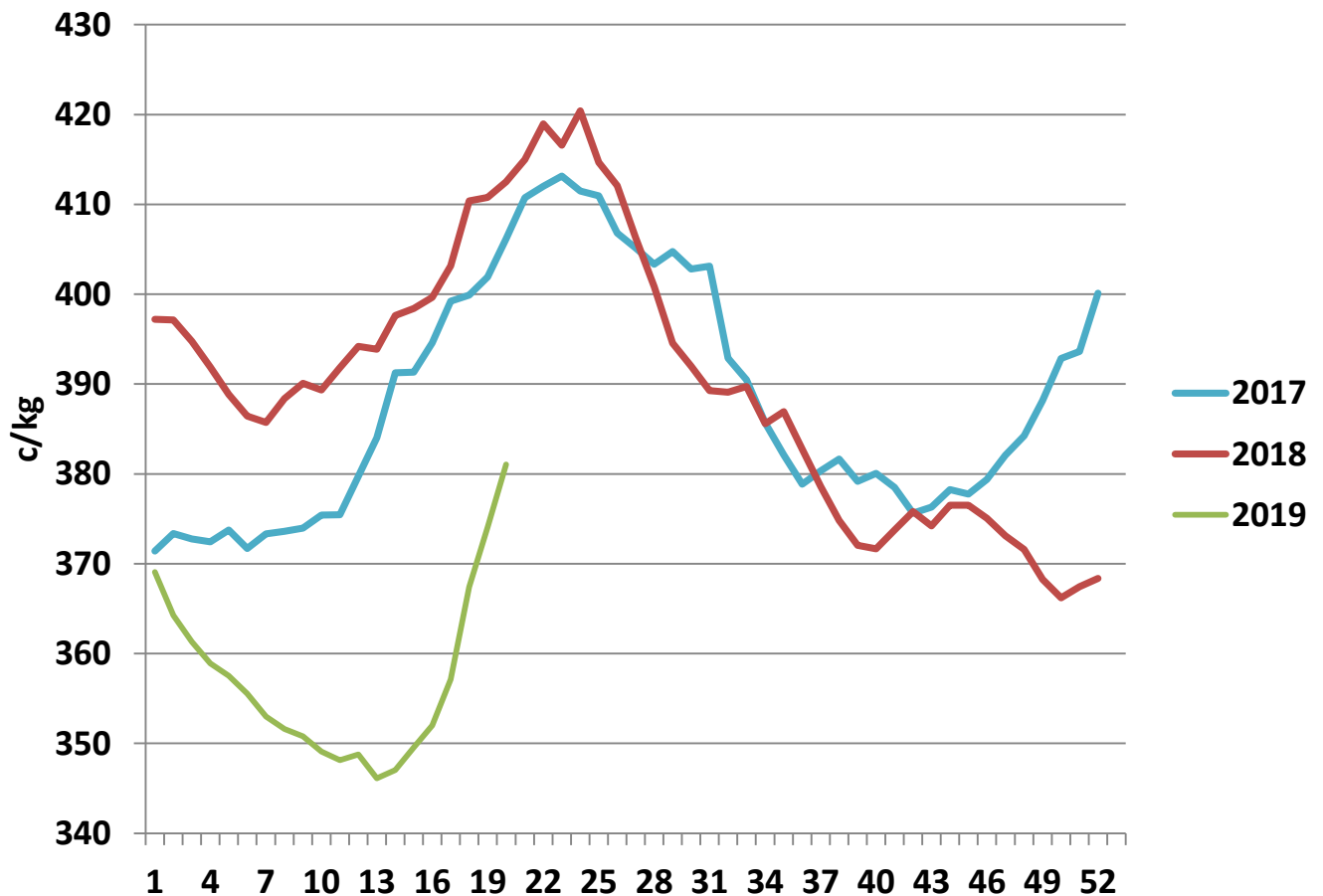
Livestock Pricing

	Ireland	NI	Britain	EU 14 Average	France	Germany
W/C 06/05/19	378.6	396.11	411.91	371.32	376	359

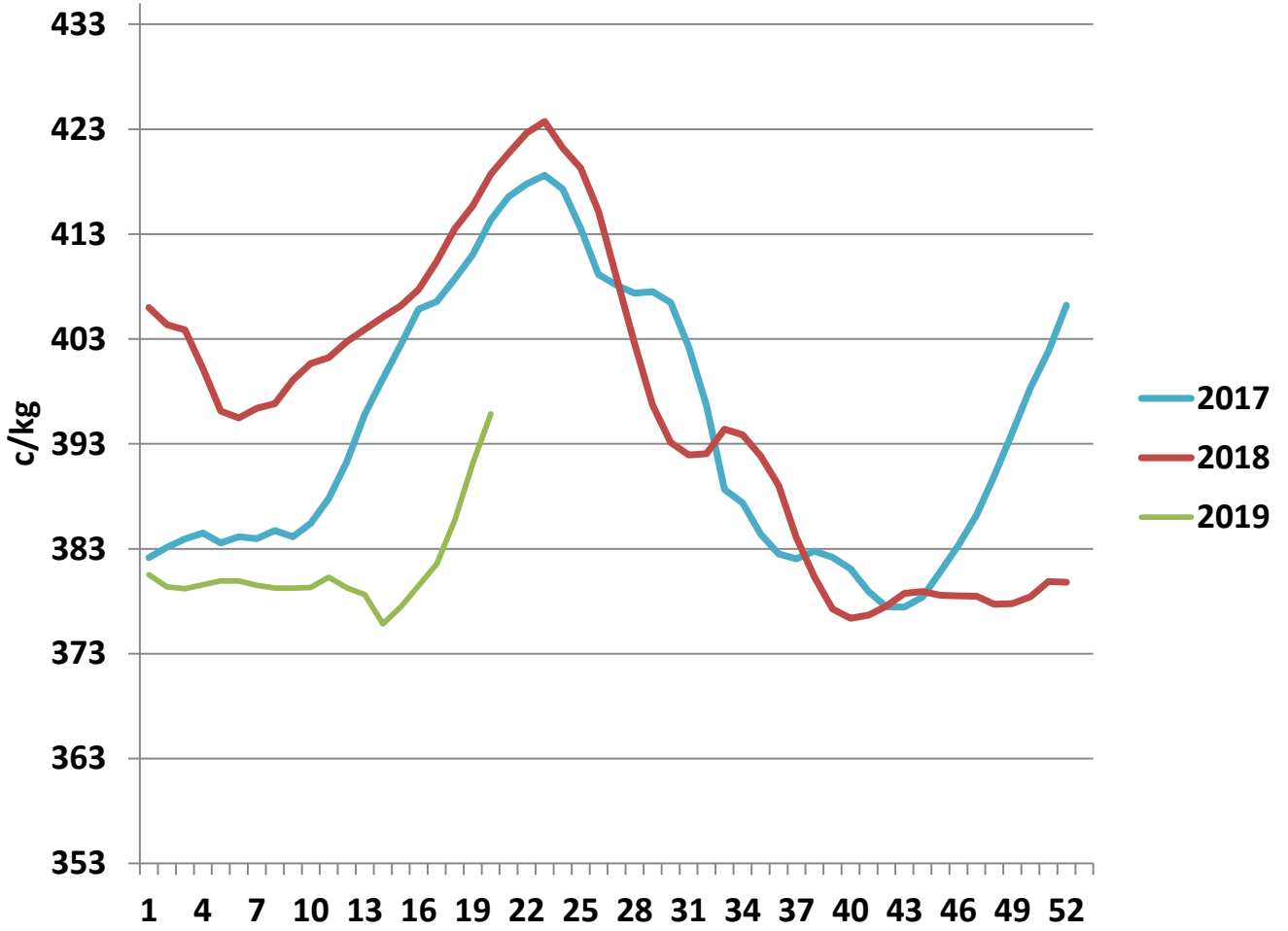
R3 Steer prices ex. VAT



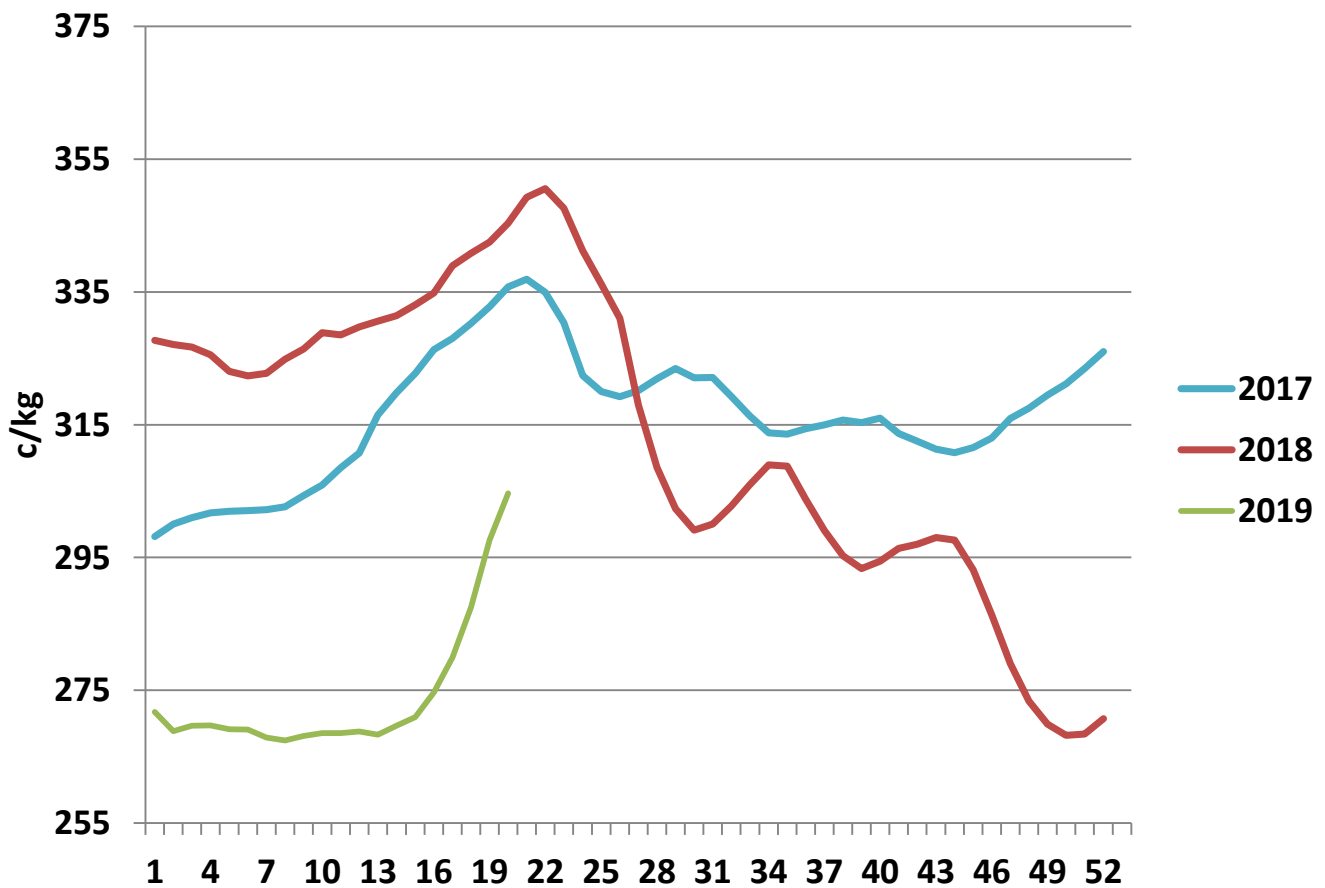
U3 Young Bull prices ex. VAT



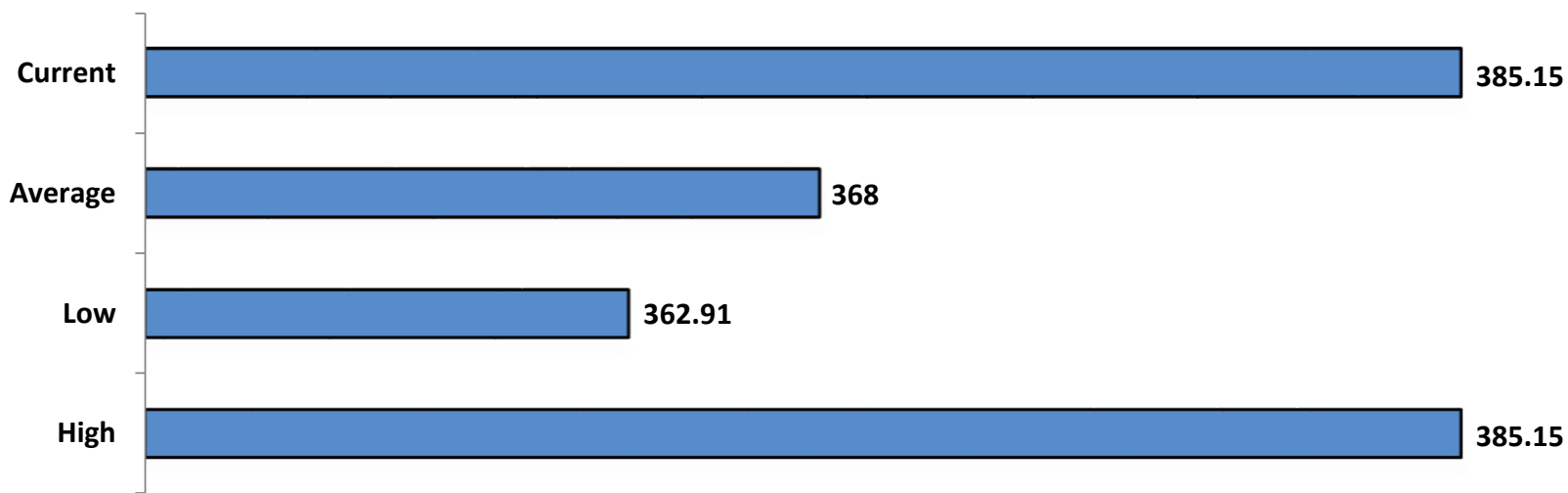
R3 Heifer prices ex. VAT



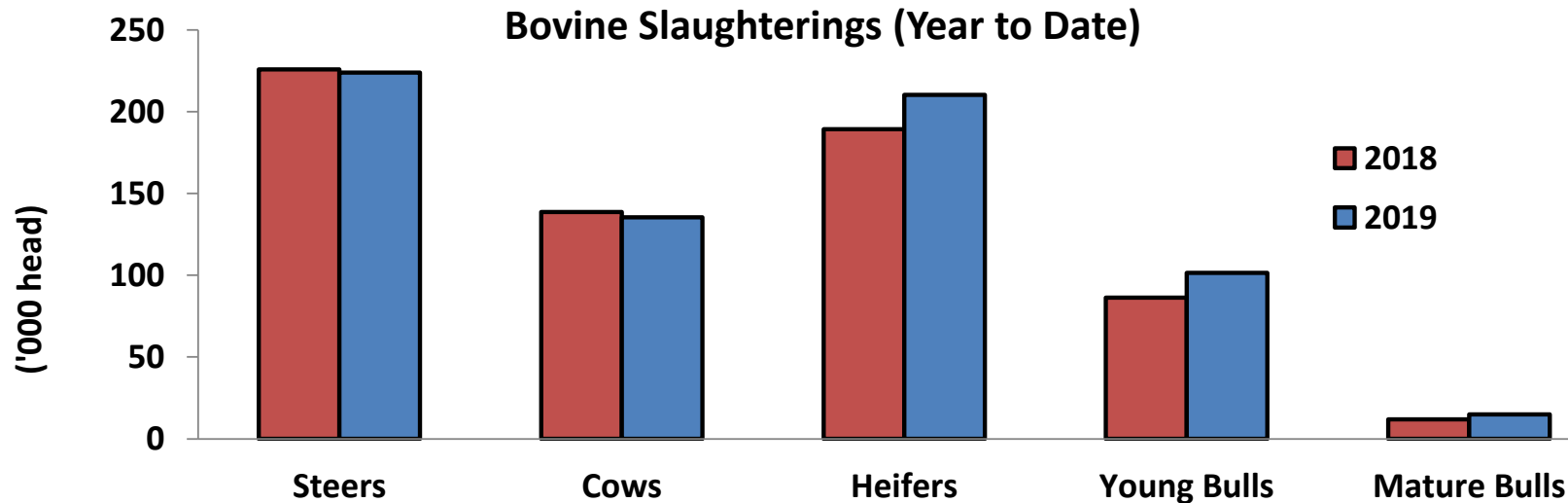
O4 Cow prices ex. VAT



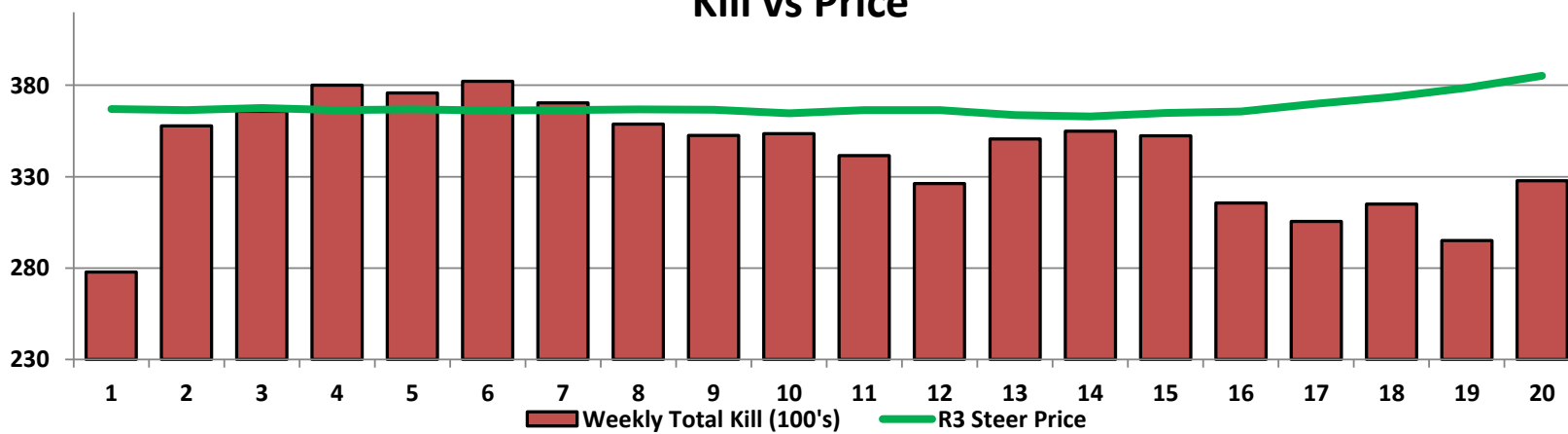
6 Month R3 Steer Statistics

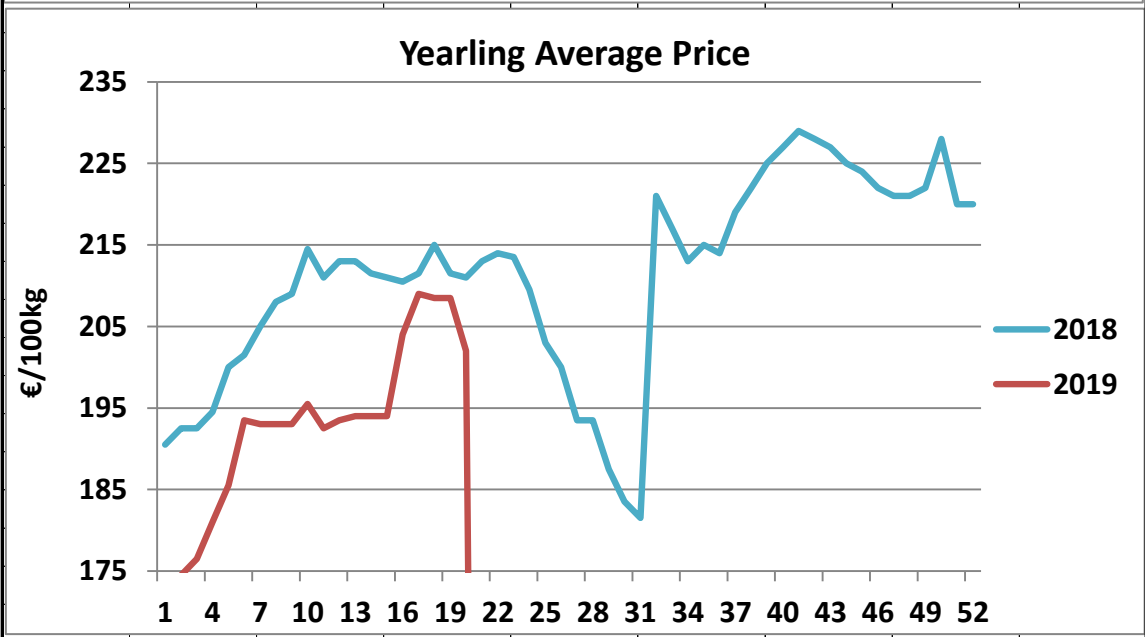
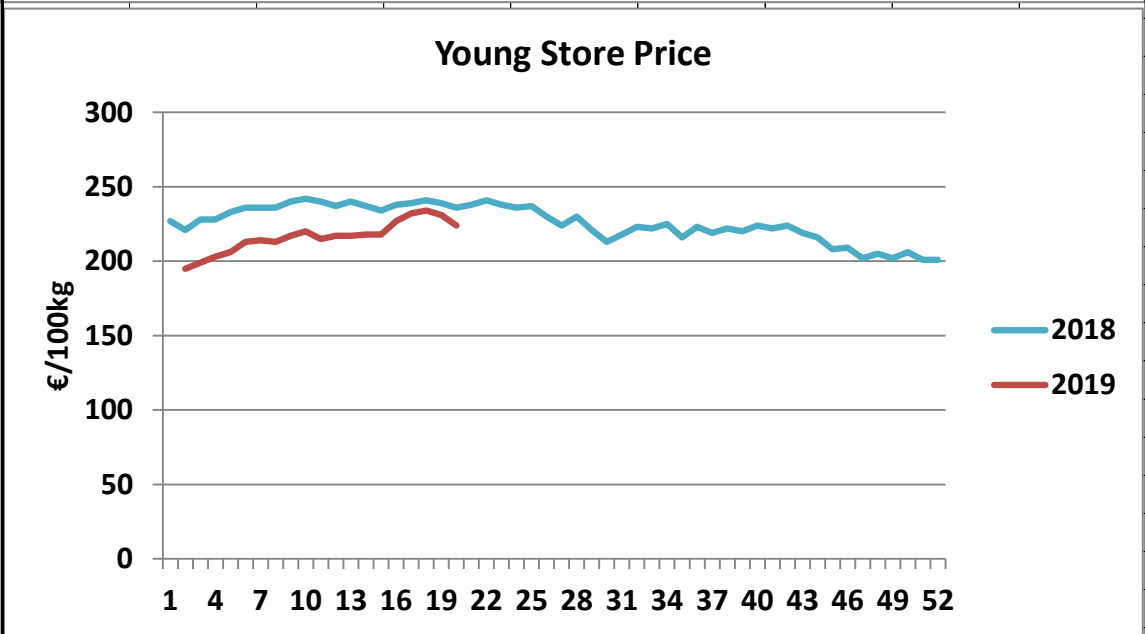
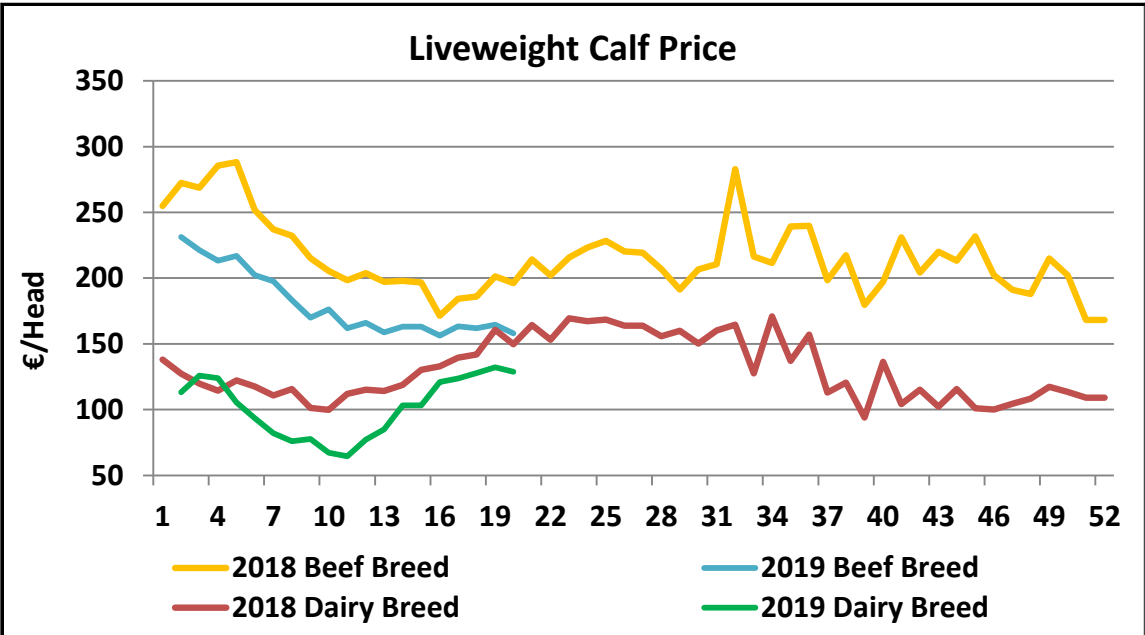


Bovine Slaughtering (Year to Date)

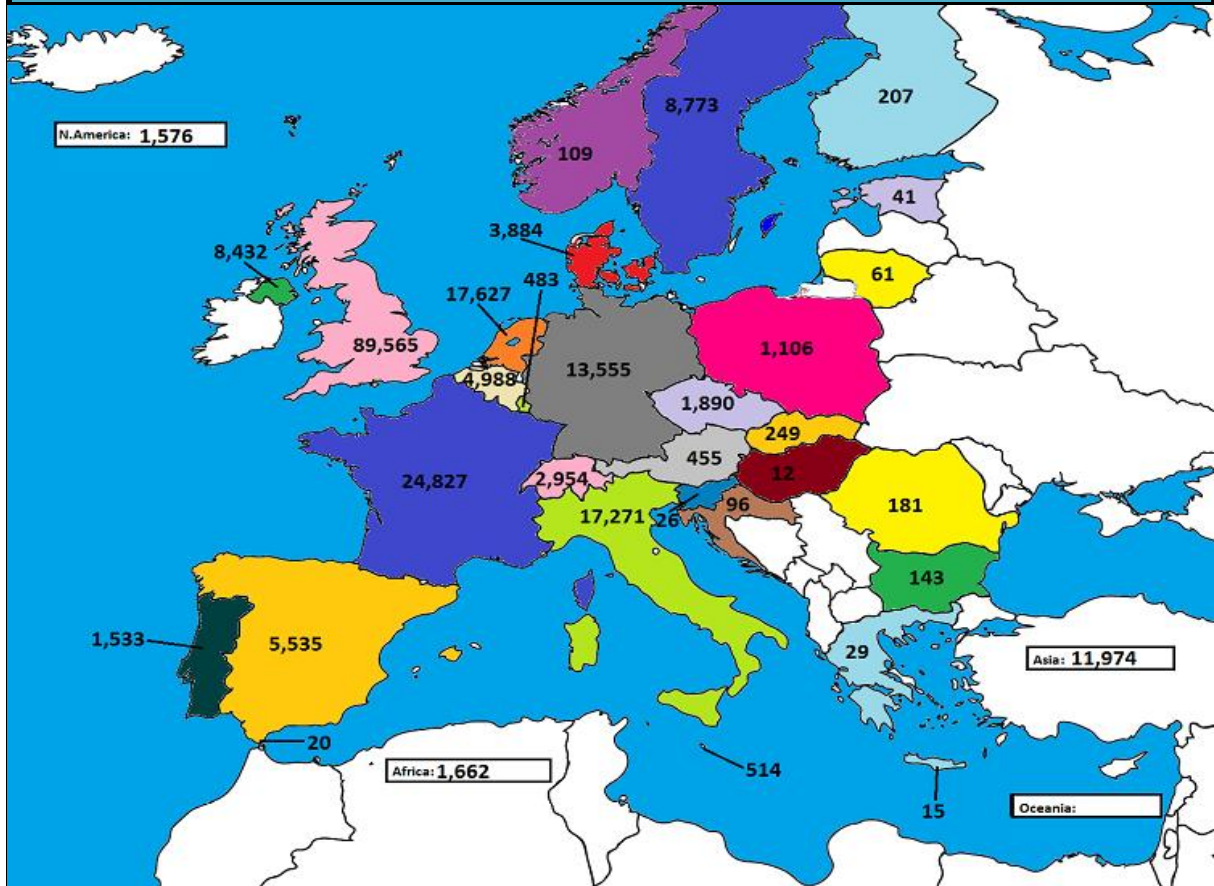


Kill vs Price

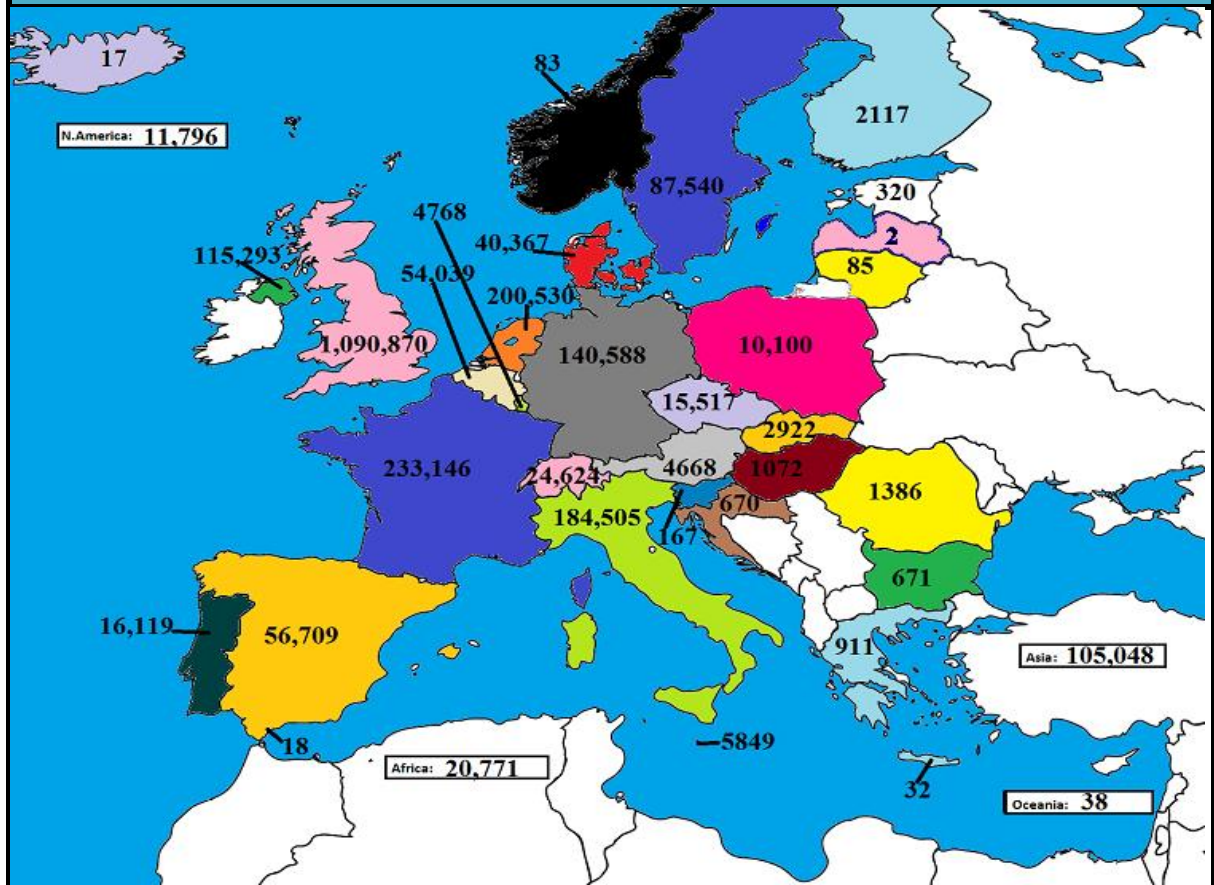




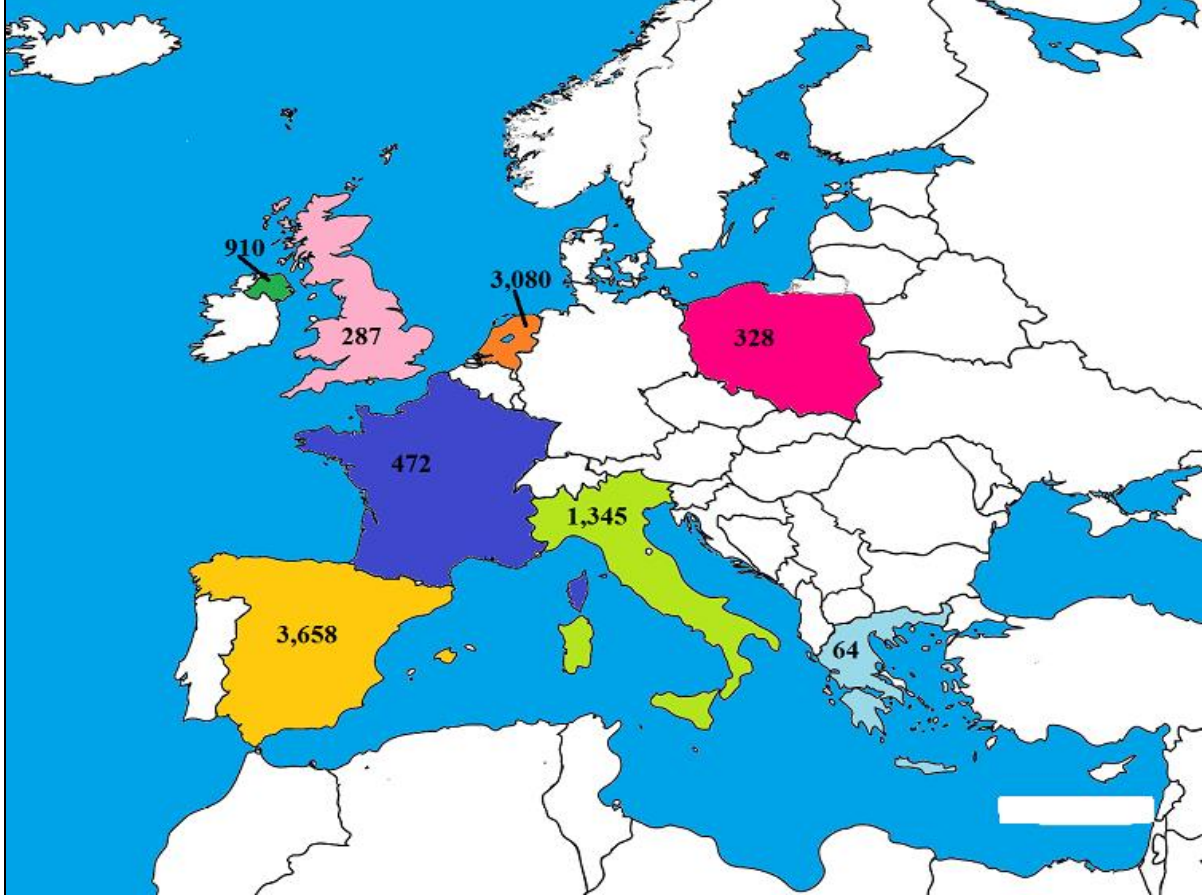
March 2019 Beef exports, €000 (CSO figures)



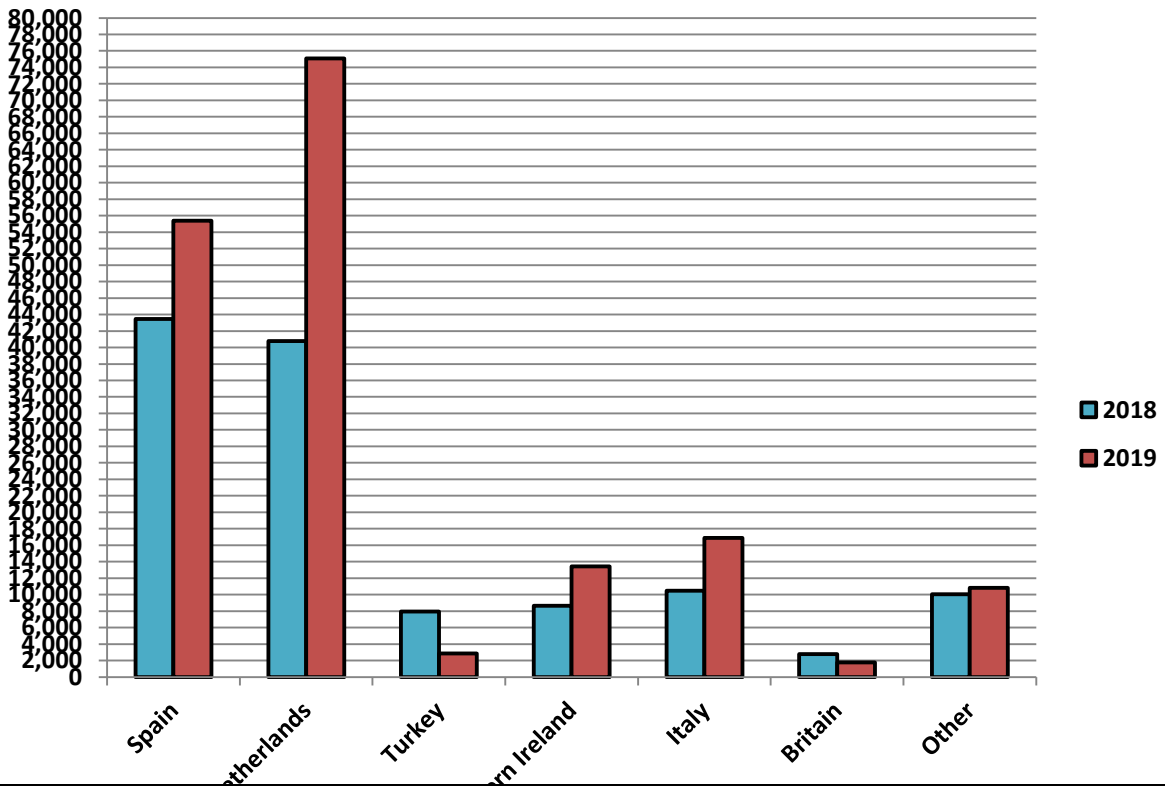
Cumulative beef exports to Dec 2018, €000 (CSO figures)

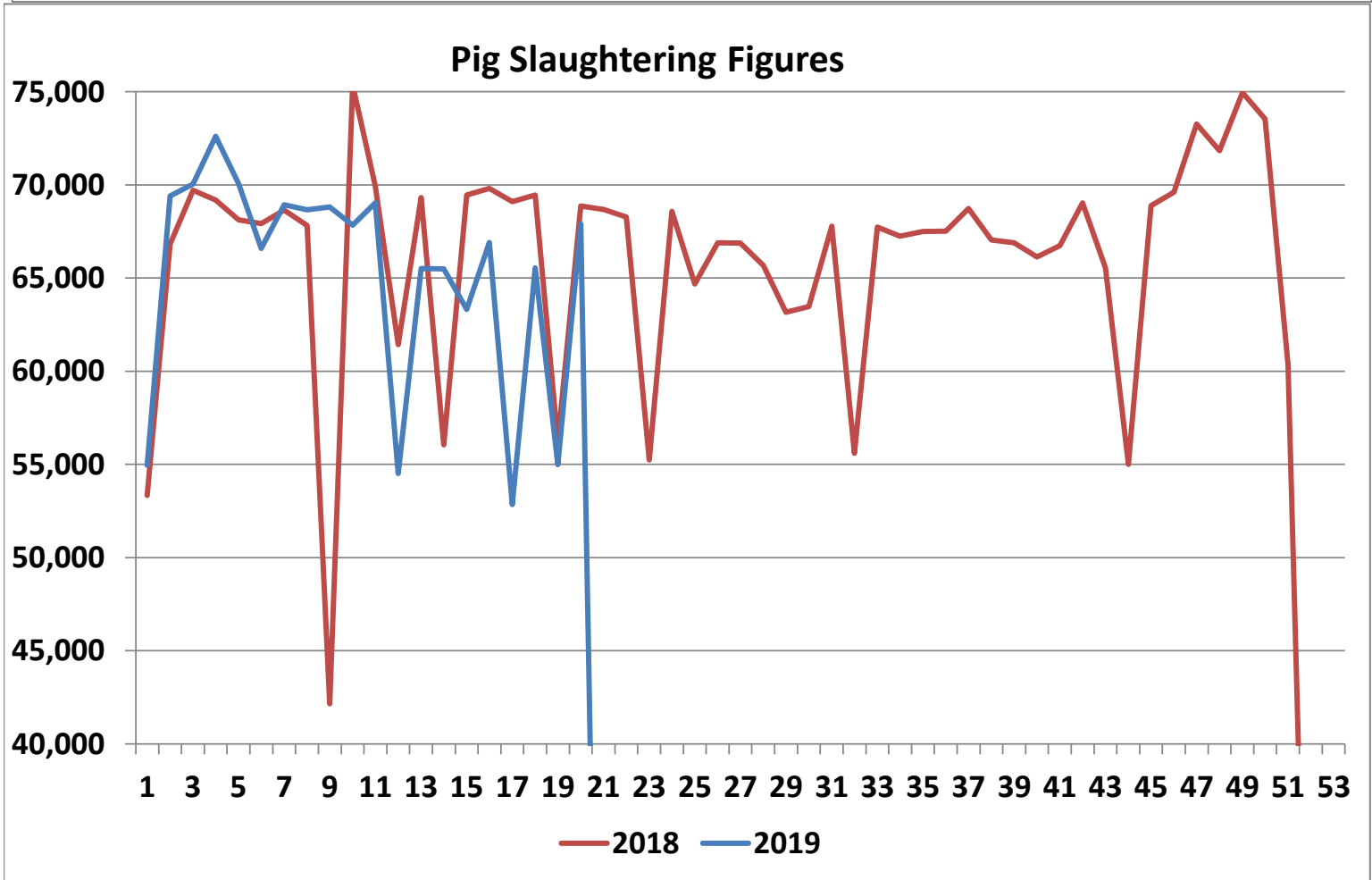
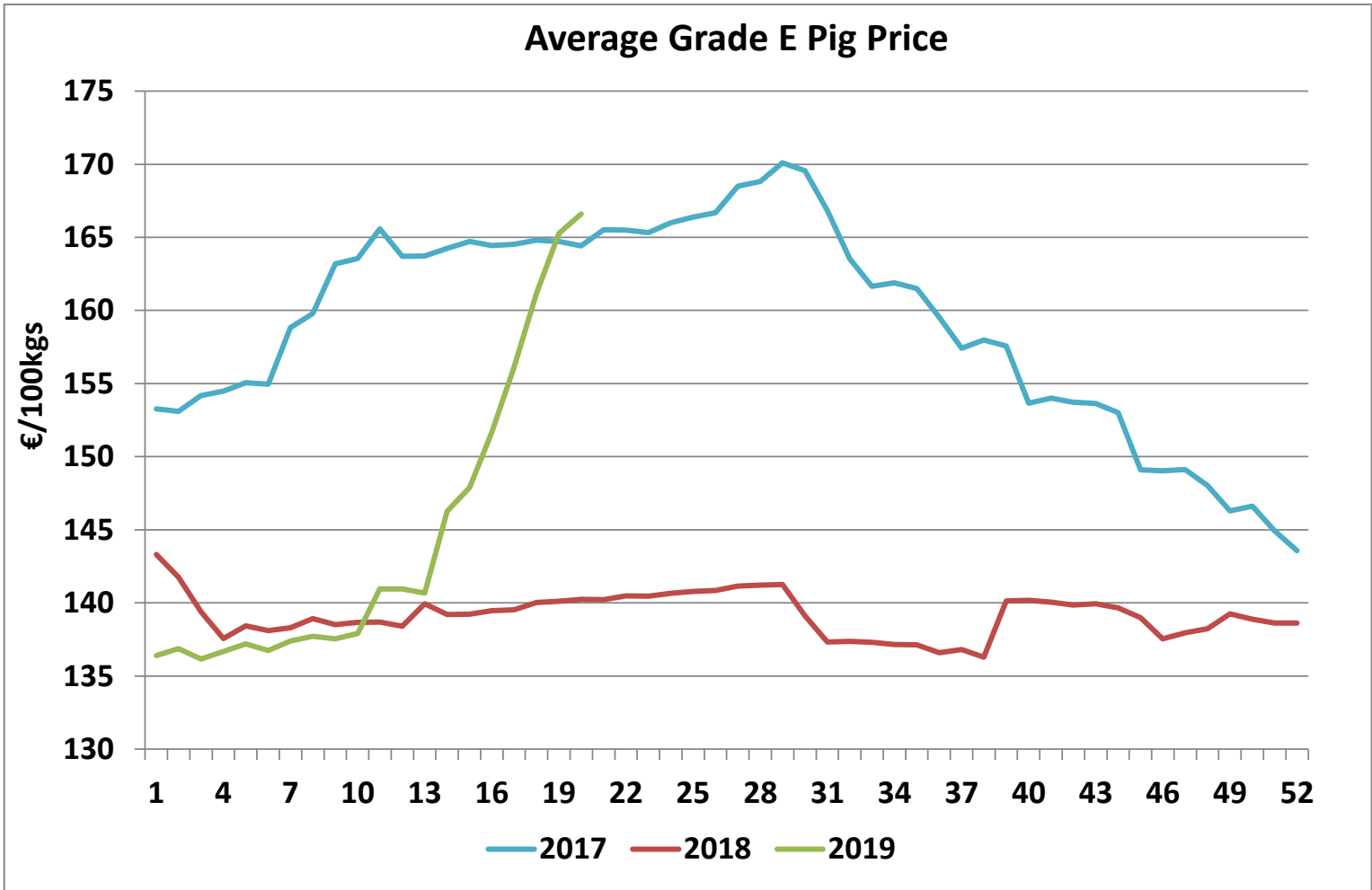


Cattle exported, w/c 06/05/19



Cumulative cattle export figures, 2019





Sheepmeat Information for Week 20 13/05/2019 - 19/05/2019

Irish Prices €/100 kg	2019	2018	Change
Ave Factory Price	519.01	631.33	-17.8%
Ave Mart Price	500.96	565.63	-11.4%
National Ave Price	513.59	611.62	-16.0%
YTD Ave	494.26	520.53	-5.0%

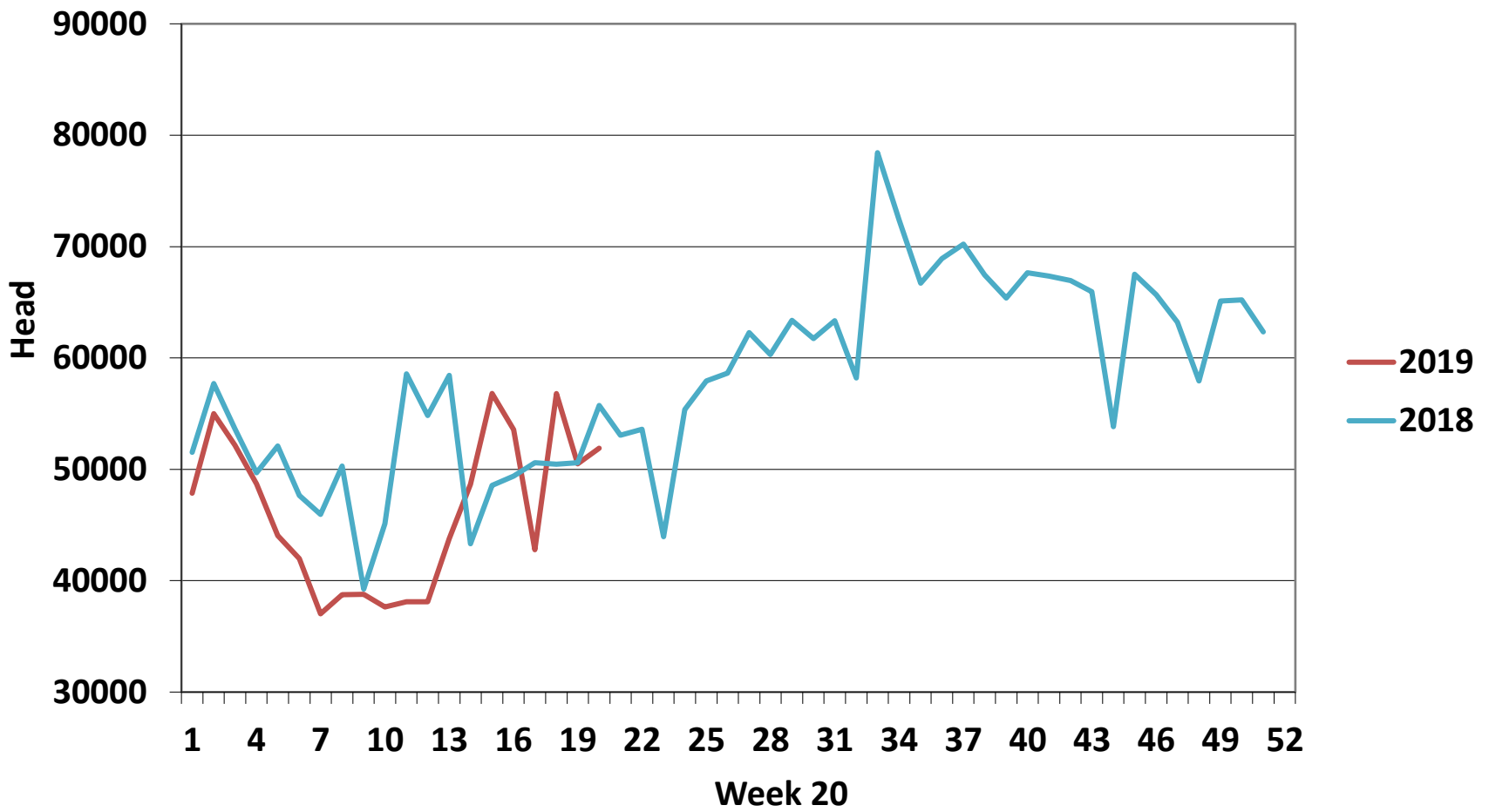
Slaughterings	2019	2018	Change
Weekly	51,908	55,725	-7%
YTD	922,914	1,013,305	-9%

EU Market Rates Heavy Lambs	€/100kg	% of Community Price
Belgium	549.2	99%
Denmark	512.7	93%
Germany	552.3	100%
Spain	532.0	96%
France	652.0	118%
Croatia	568.5	103%
Ireland	525.6	95%
Italy	569.0	103%
Cyprus	453.0	82%
Latvia	419.8	76%
Lithuania	385.4	70%
Netherlands	550.5	100%
Austria	574.0	104%
Poland	429.9	78%
Romania	284.2	51%
Finland	359.4	65%
Sweden	528.3	96%
Northern Ireland	513.1	93%
Great Britain	536.7	97%
United Kingdom	535.0	97%
Community	552.9	100%

**REPORT ON SLAUGHTERING AT SHEEP EXPORT PREMISES
WEEK 20**

CATEGORY	2019		2018		DIFFERENCE	
	Weekly	Cumulative	Weekly	Cumulative	Weekly	Cumulative
Lambs/Hoggets	20,233	693,090	22,955	784,812	-2722	-91,722
Spring Lambs	24,398	90,801	22,020	62,845	2,378	27,956
Ewes and Rams	7,277	139,013	10,745	165,570	-3,468	-26,557
Light Lambs	-	10	5	78	-5	-68
TOTAL	51,908	922,914	55,725	1,013,305	-3,817	-90,391

Weekly Sheep Slaughterings



Ave. Price €/100 kg for Sheepmeat

