

# Meat Market Report

20/05/19 - 26/05/19

Week

21



**An Roinn Talmhaíochta,  
Bia agus Mara**

Department of Agriculture,  
Food and the Marine

# MARKET SUMMARY

## Beef

### Deadweight Prices c/100Kg (Including VAT)

	U3	U4	R3	R4	O3	O4	P+
Steers	418.3	419.4	410.1	411.1	393.7	397.1	369.8
Heifers	436.0	434.3	421.7	420.2	403.2	403.6	368.9
Young Bulls	406.6	402.6	396.1	393.7	375.9	381.6	362.3
Cows			345.1	344.0	324.9	325.9	319.3

### Liveweight Prices

*Bull Calf Average Price	€156.2 per head (Excluding VAT)
**Young Store Average Price	€224.0 per 100kg (Excluding VAT)
***Yearling (male & female) Price	€203.5 per 100kg (Excluding VAT)

\* Aged 8-28 days \*\* Aged 180-364 days, Male & Female \*\*\*age 365-730 days

### Slaughterings

**34,402** cattle slaughtered this week, of which steers were **10,738 (31%)**, heifers **10,055 (29%)**, young bulls **4,413 (13%)** and cows **8,207 (24%)**. Total YTD slaughter is **720,346** compared to **683,811** in 2018, a 5% increase.

### Live Trade

**7,650** cattle were exported in the week commencing **20/05/2019\***; **7,034** to EU (Except NI). Live exports for 2019 amount to **203,124** compared to **154,650** in 2018, up 31% on 2018 levels.

\*This data is provisional and subject to revision.

**The next meeting of the Management Committee for the Common Organisation of Agricultural Markets (Animal Products Sector) is 23rd May 2019**

### CONTENTS:

Page 2: Market Summary Beef  
 Page 3: Market Summary Other Meats  
 Page 4: Beef Price and Slaughter Summary  
 Page 5: Comparative Beef Prices  
 Page 6: Steer and Young Bull Price  
 Page 7: Heifer and Cow Graphs  
 Page 8: Price and Slaughter Graphs  
 Page 9: Liveweight Beef Graphs

Page 10: Beef Export Maps  
 Page 11: Beef Export Info  
 Page 12: Pig price and slaughter graphs  
 Page 13: Sheep prices and slaughter  
 Page 15: Sheep price and slaughter graphs

# MARKET SUMMARY

## Pigmeat

Grade E Pig  
Prices (Ex.  
VAT)

The Grade E Pig price for week commencing 20/05/2019 was €166.91 per 100Kg compared to €140.22 in the same week last year, which represents a 19% increase.

Slaughtering

66,520 pigs were slaughtered in week 21 of which 1,686 were sows. The cumulative figure for pig slaughterings in 2019 is 1,370,521 which is a 1% decrease with the same point last year.

## Sheepmeat

Sheepmeat  
Prices (Ex.  
VAT)

The national average price for the week commencing 20/05/2019 was €474.35 per 100Kg, a decrease of 22% over the same week last year.

Slaughtering

53,847 sheep were slaughtered at sheep export premises the week commencing 20/05/2019, compared to 53,063 in the same week of 2018. Sheep slaughterings for 2019 are 8% down on 2018 at 976,761 head.

Live Trade

Total live exports to European Countries stood at 20,769 head to the end of 2018.

## Poultry

Slaughtering

Cumulative poultry slaughterings for 2019\* stand at 40,759,240 birds at the end of week 20, up 9% compared to the same period last year.

\*Latest Figures are provisional and subject to change

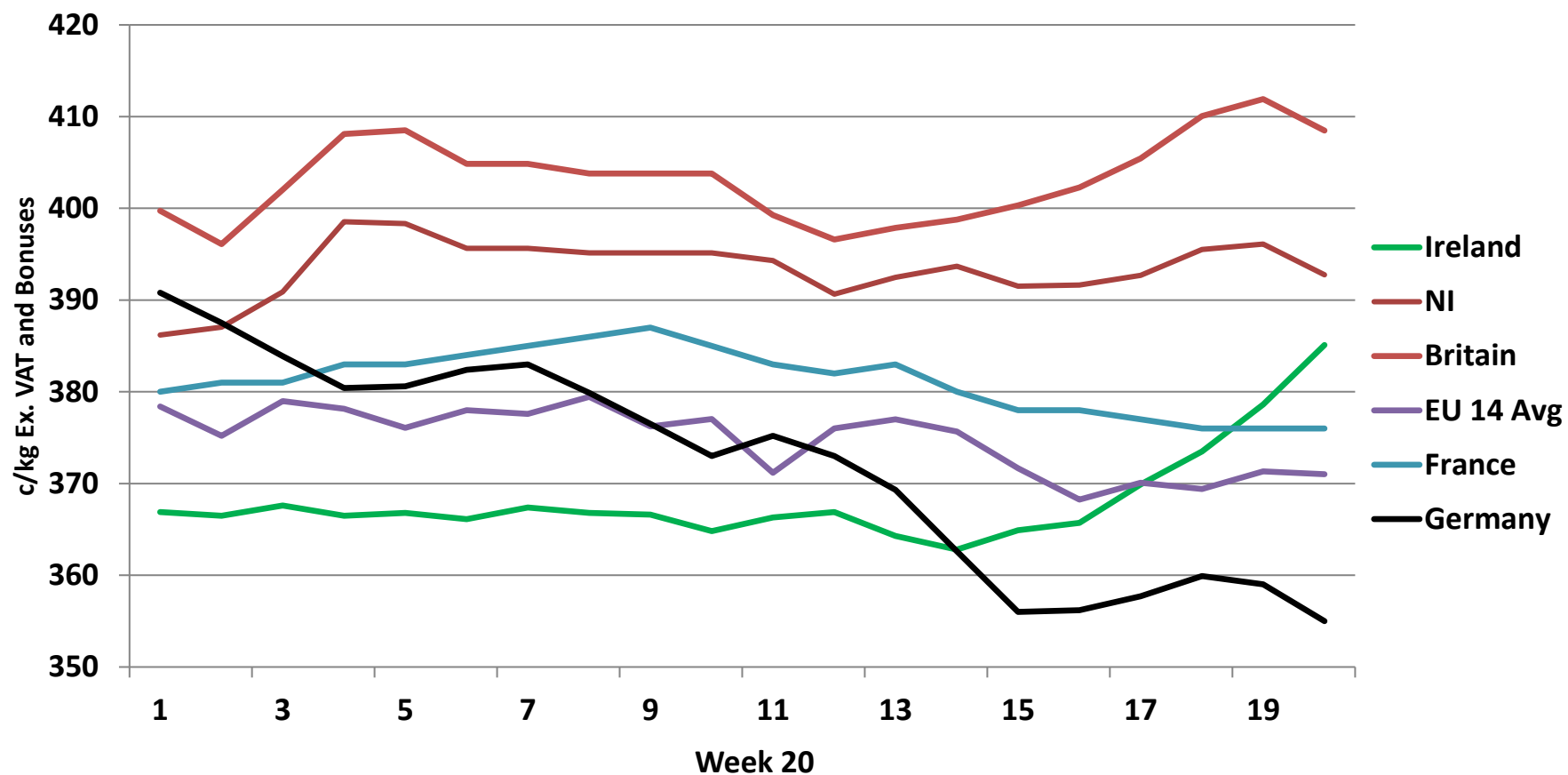
Dead Weight Prices	W/C	W/C	Same week 2018	% change prev week	% change 2018
	20/05/19	13/05/19	21/05/18		
Steers (R3) (c/kg)	389.1	385.2	410.1	1.0%	-5.1%
Heifers (R3) (c/kg)	400.1	395.9	420.7	1.1%	-4.9%
Young Bulls (U3) (c/kg)	385.7	381.1	415.0	1.2%	-7.1%
Cows (04) (c/kg)	309.2	304.7	349.2	1.5%	-11.5%

Live Weight Prices	W/C	W/C	Same week 2018	% change previous week	% change 2018
	20/05/19	13/05/19	21/05/18		
Yearlings (Male) (Aged 365 - 730 days) - (€/100Kg)	198	197	210	0.5%	-5.7%
Yearlings (Female) (Aged 365 - 730 days) - (€/100Kg)	209	207	216	1.0%	-3.2%
Young Stores (Male & Female) (Aged 180 - 364 days) - (€/100Kg)	224	224	238	0.0%	-5.9%
Bull Calf (€/head) Dairy	134.9	128.9	164.4	4.7%	-17.9%
Bull Calf (€/head) Beef	177.4	158.1	214.2	12.2%	-17.2%
Bull Calf (€/head) Average	156.2	143.5	189.3	8.8%	-17.5%

Slaughter Figures	% of weekly figures	W/C	Same week 2018	Year to Date		Change 2019 v 2018	
		20-May-19		2019	2018	Head	%
Steers	31.2%	10,738	11,287	234,538	237,218	-2,680	-1.1%
Cows	23.9%	8,207	6,714	143,752	145,370	-1,618	-1.1%
Heifers	29.2%	10,055	8,693	220,244	198,008	22,236	11.2%
Young Bulls	12.8%	4,413	4,345	105,876	90,628	15,248	16.8%
Mature Bulls	2.9%	989	729	15,936	12,587	3,349	26.6%
Total	100%	34,402	31,768	720,346	683,811	36,535	5.3%

Live Exports	W/C	Same week	W/C	Year to Date		Change 2019 v 2018	
	20-May-19	2018	13-May-19	2019	2018	Head	%
Northern Ireland	616	341	785	14,965	7,474	7,491	100%
EU Except NI	7,034	7,904	8,286	180,425	138,256	42,169	31%
Third Countries	0	0	0	7,734	8,920	-1,186	-
Total	7,650	8,245	9,071	203,124	154,650	48,474	31%
Calves YTD:		168,548		Adult YTD:Cattle		34,447	

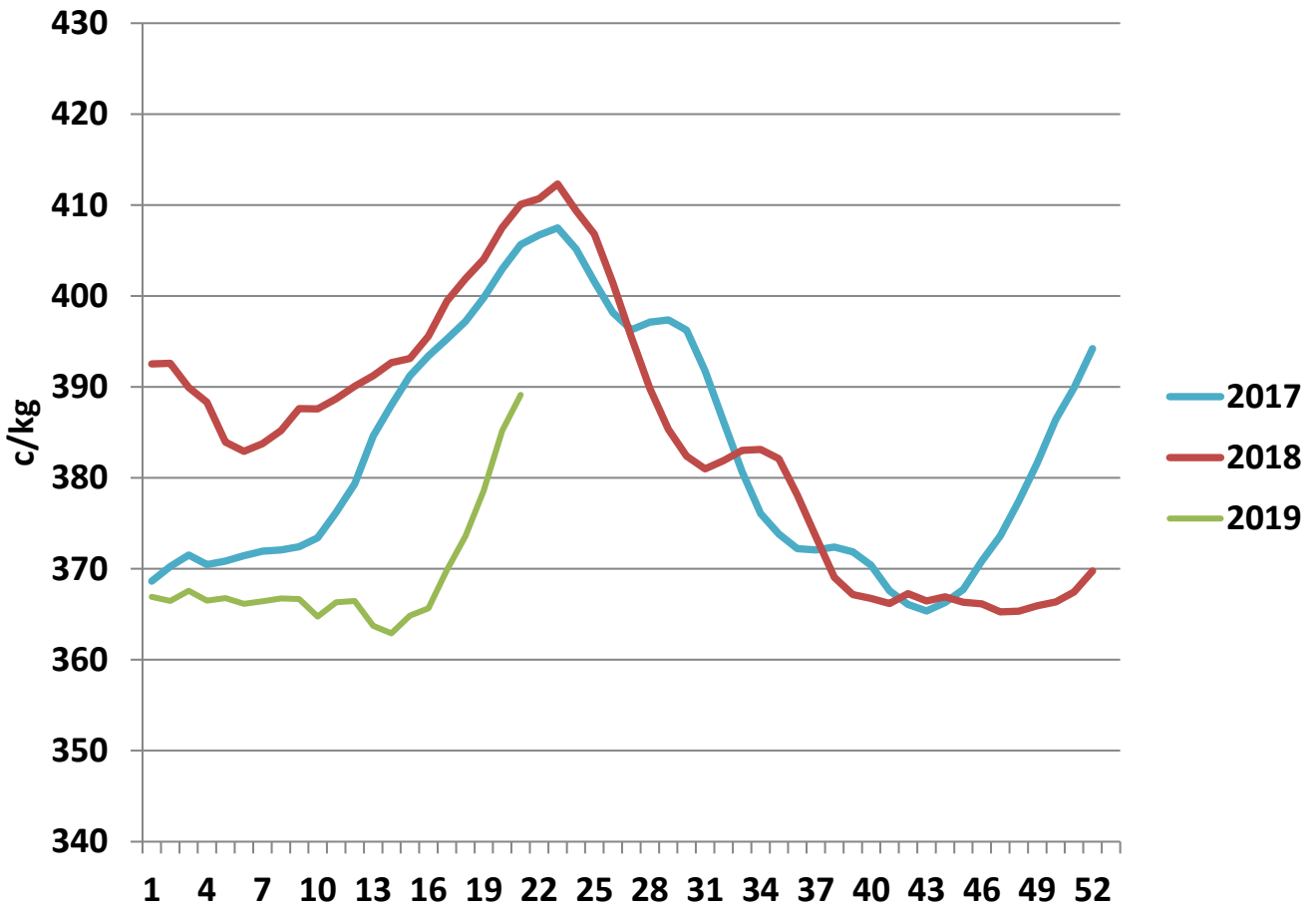
## Irish Deadweight Cattle Prices vs Selected Other Markets, 2019



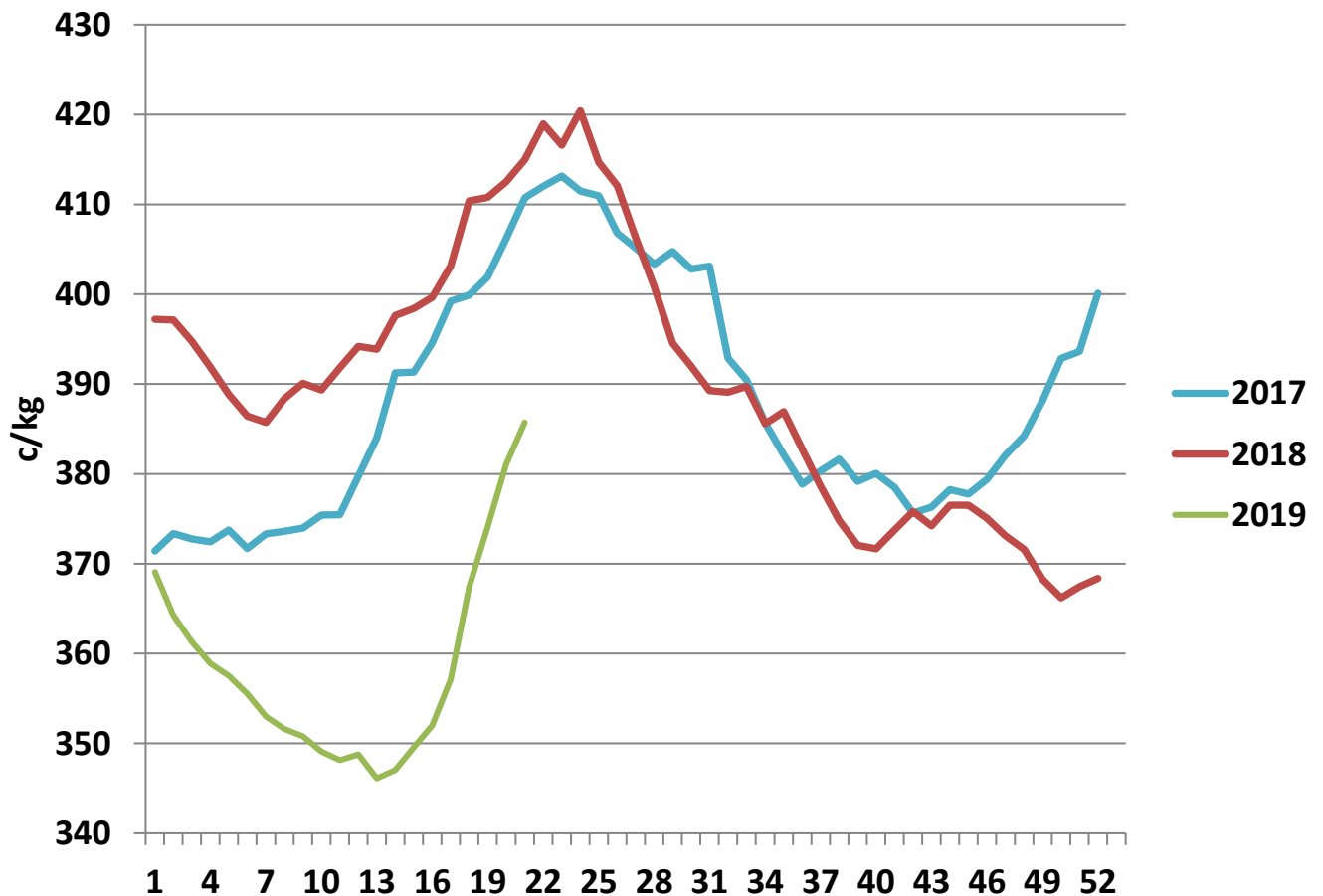
### Livestock Pricing

	Ireland	NI	Britain	EU 14 Average	France	Germany
W/C 13/05/19	385.1	392.76	408.47	371	376	355

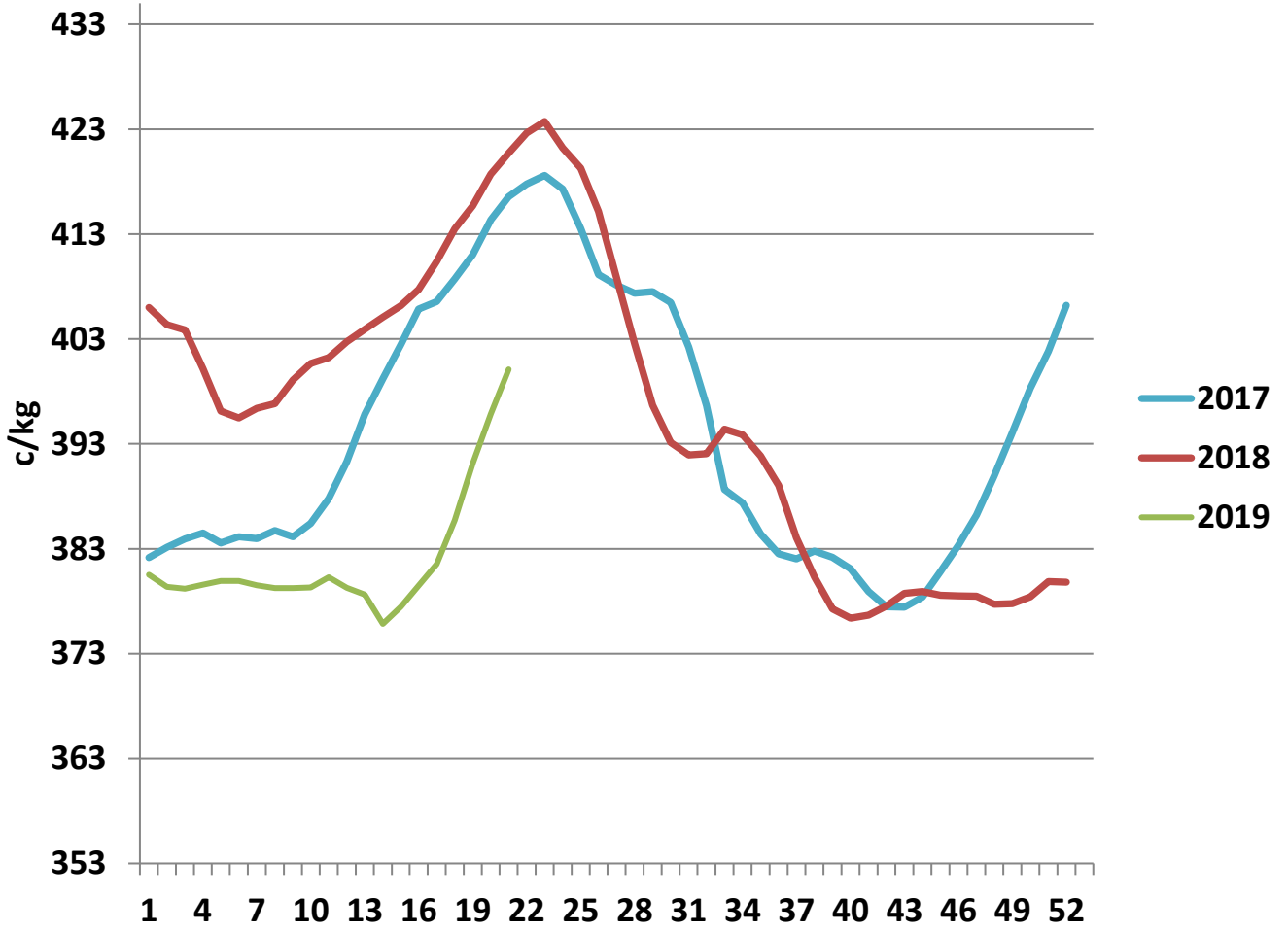
### R3 Steer prices ex. VAT



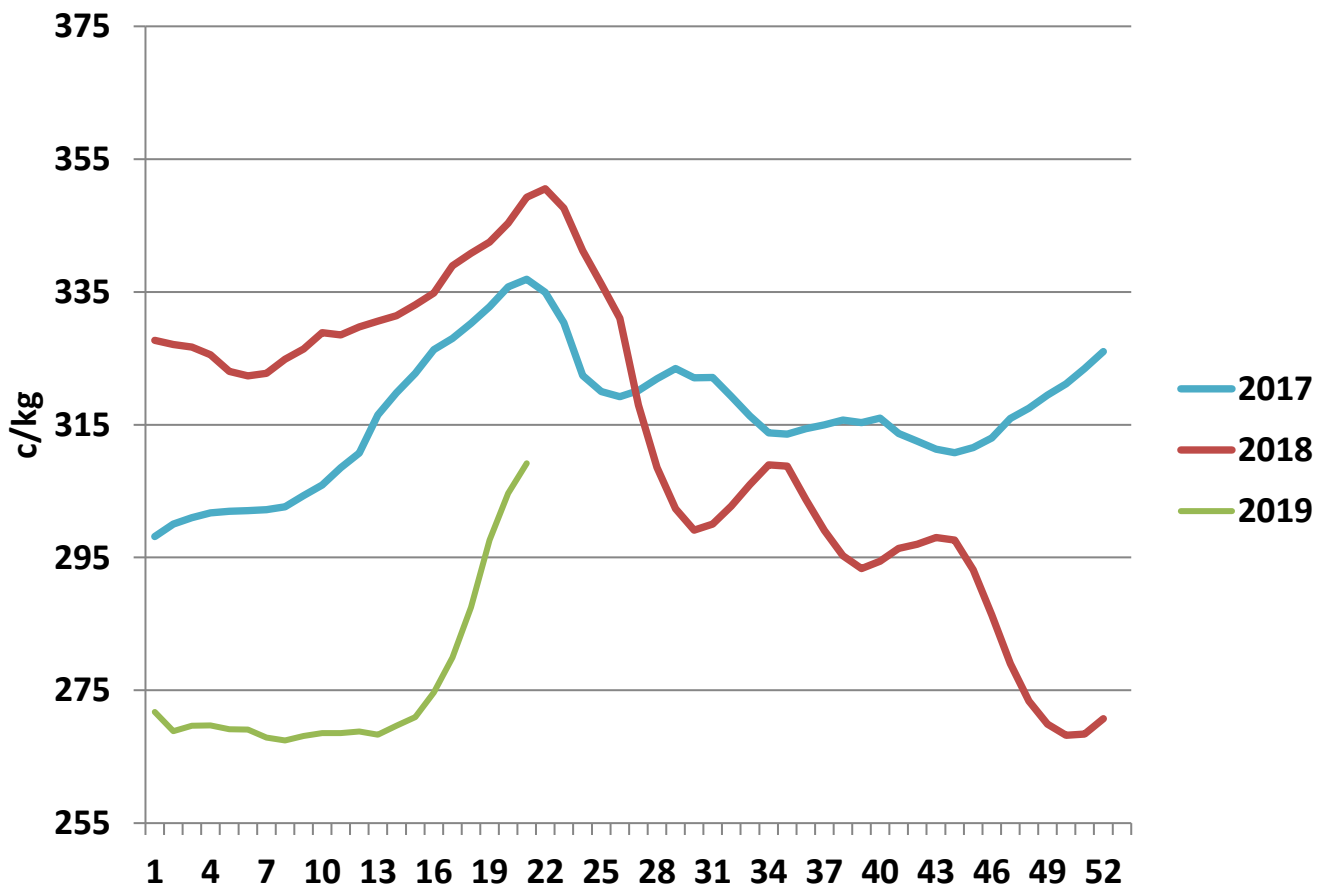
### U3 Young Bull prices ex. VAT

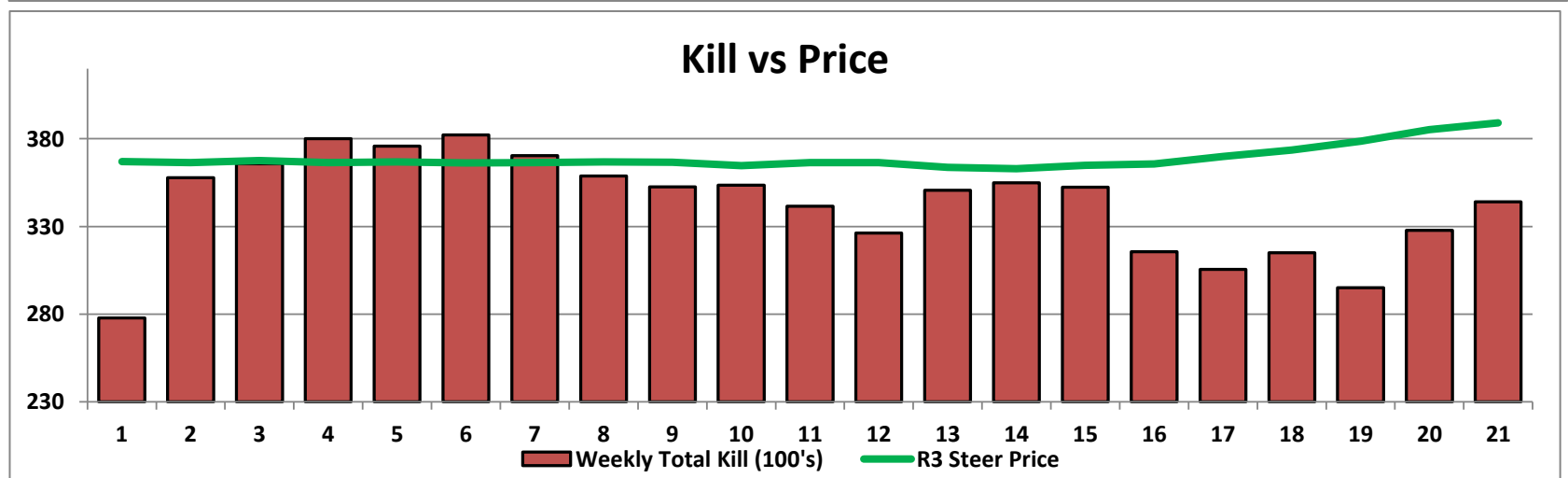
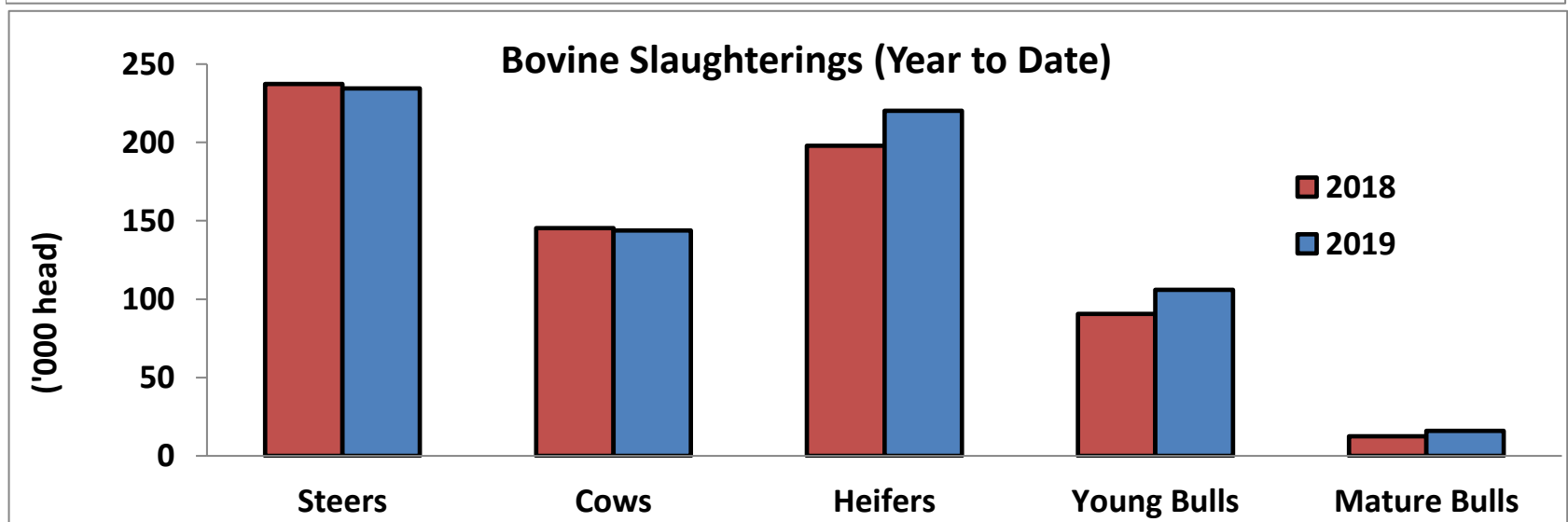
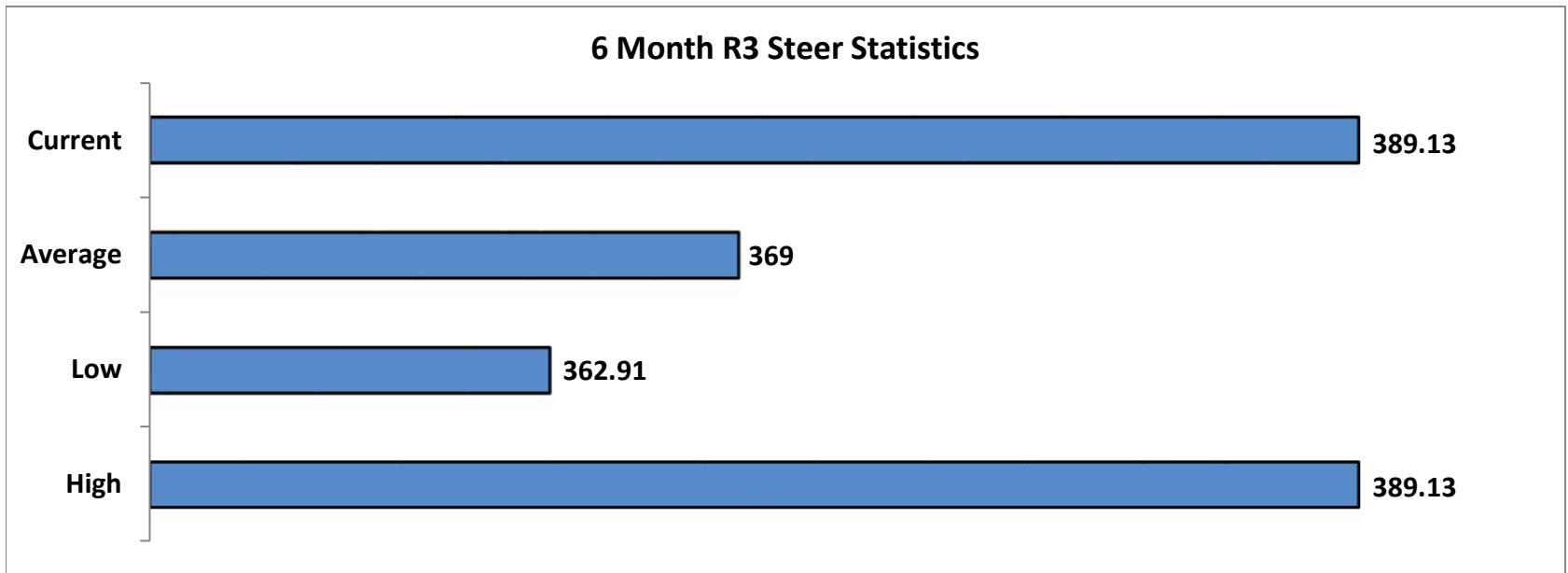


### R3 Heifer prices ex. VAT

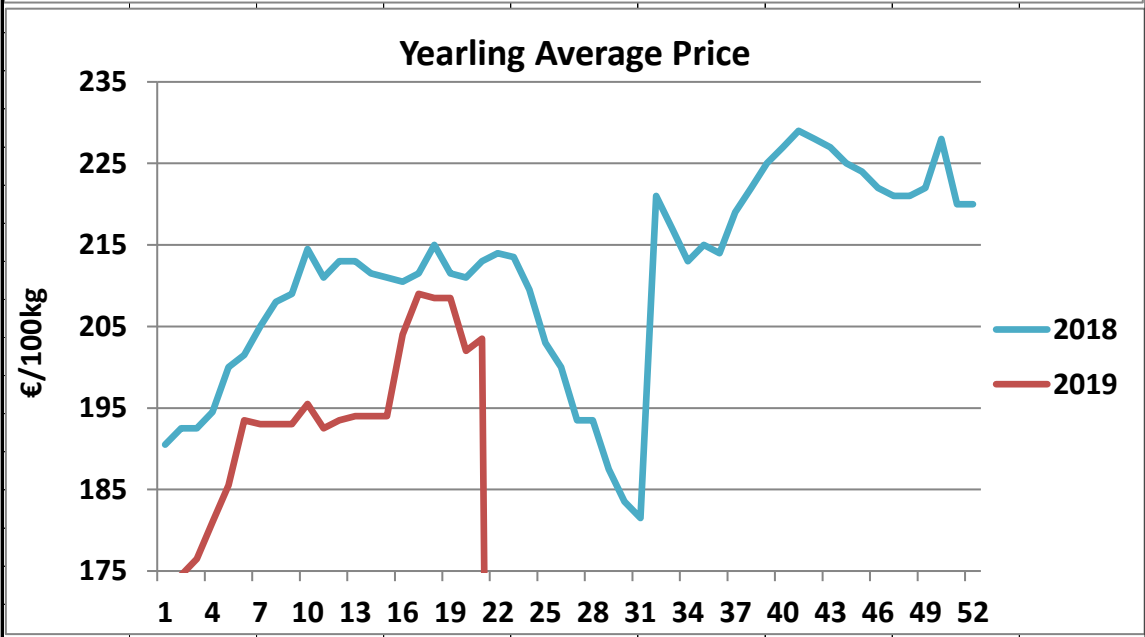
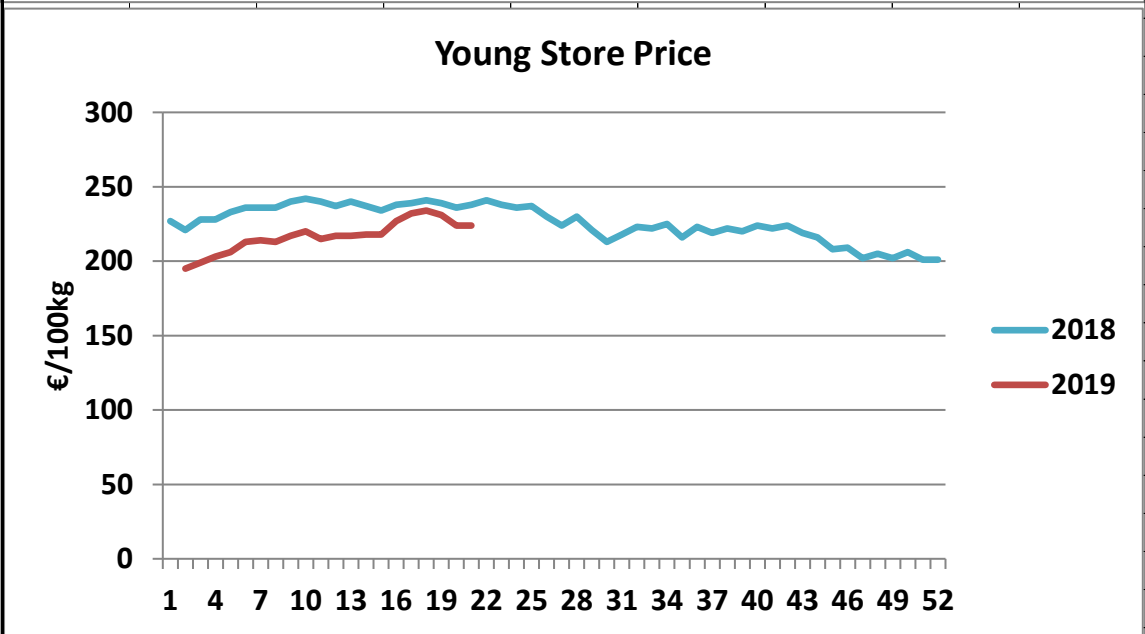
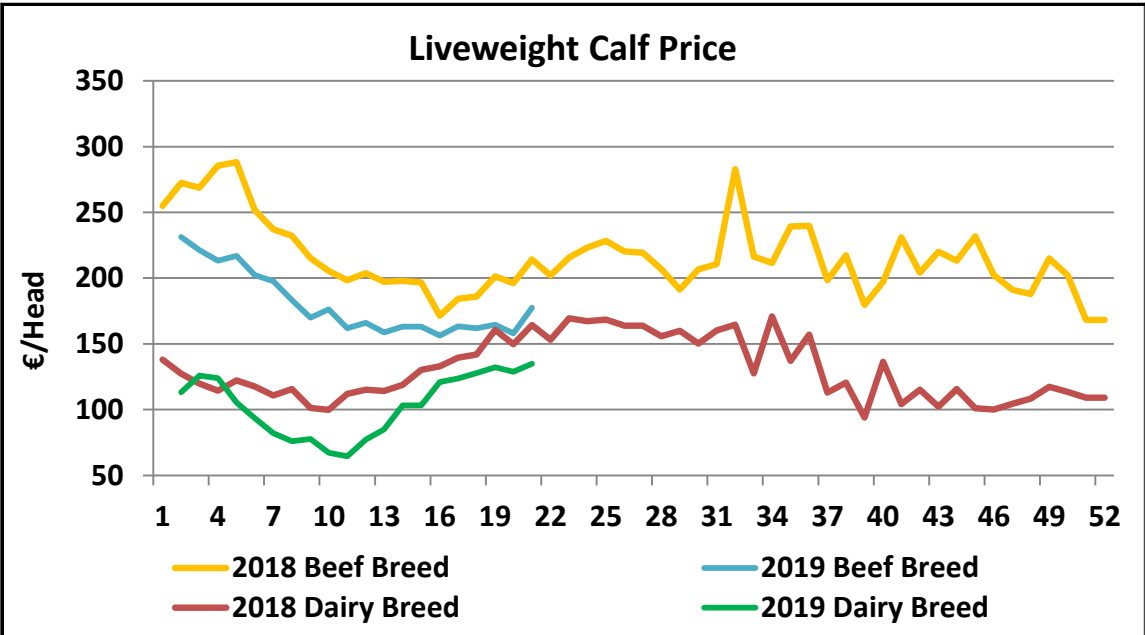


### O4 Cow prices ex. VAT

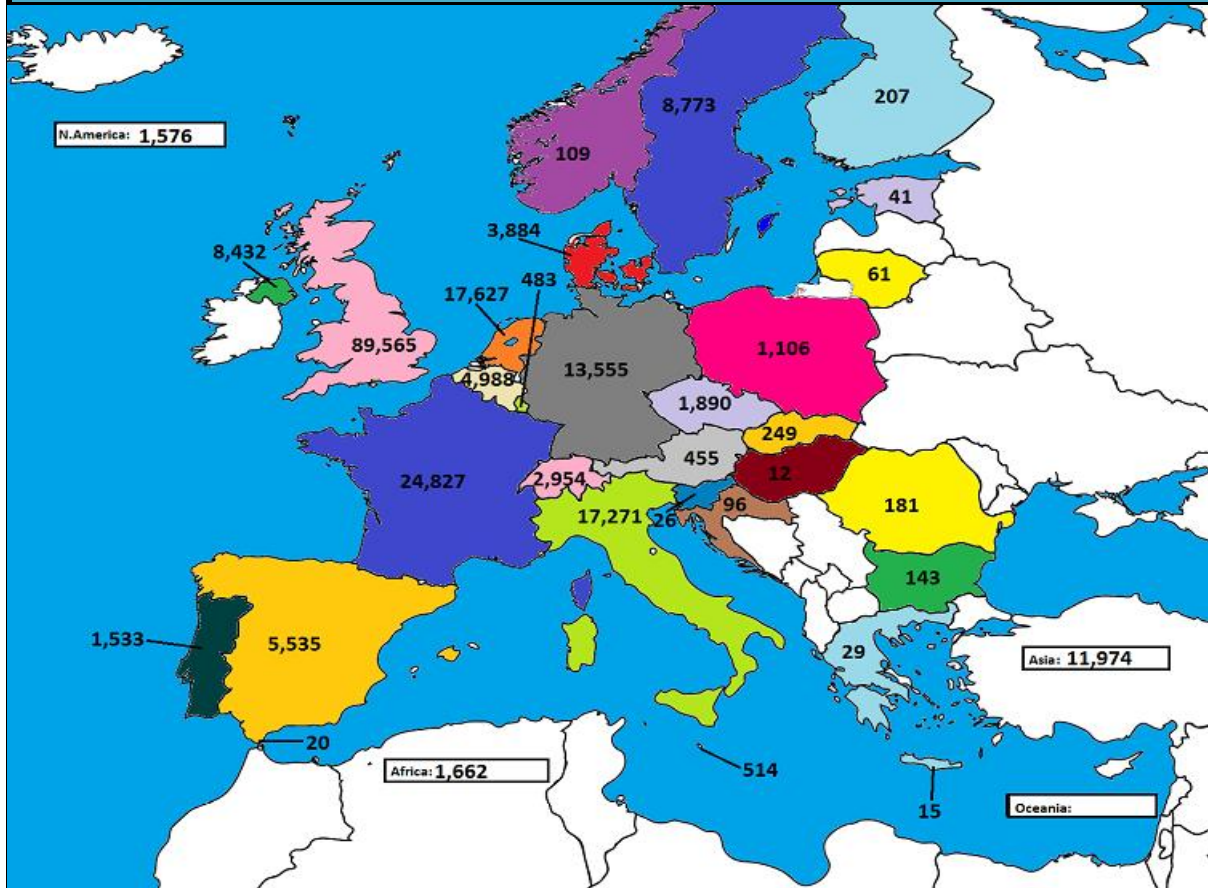




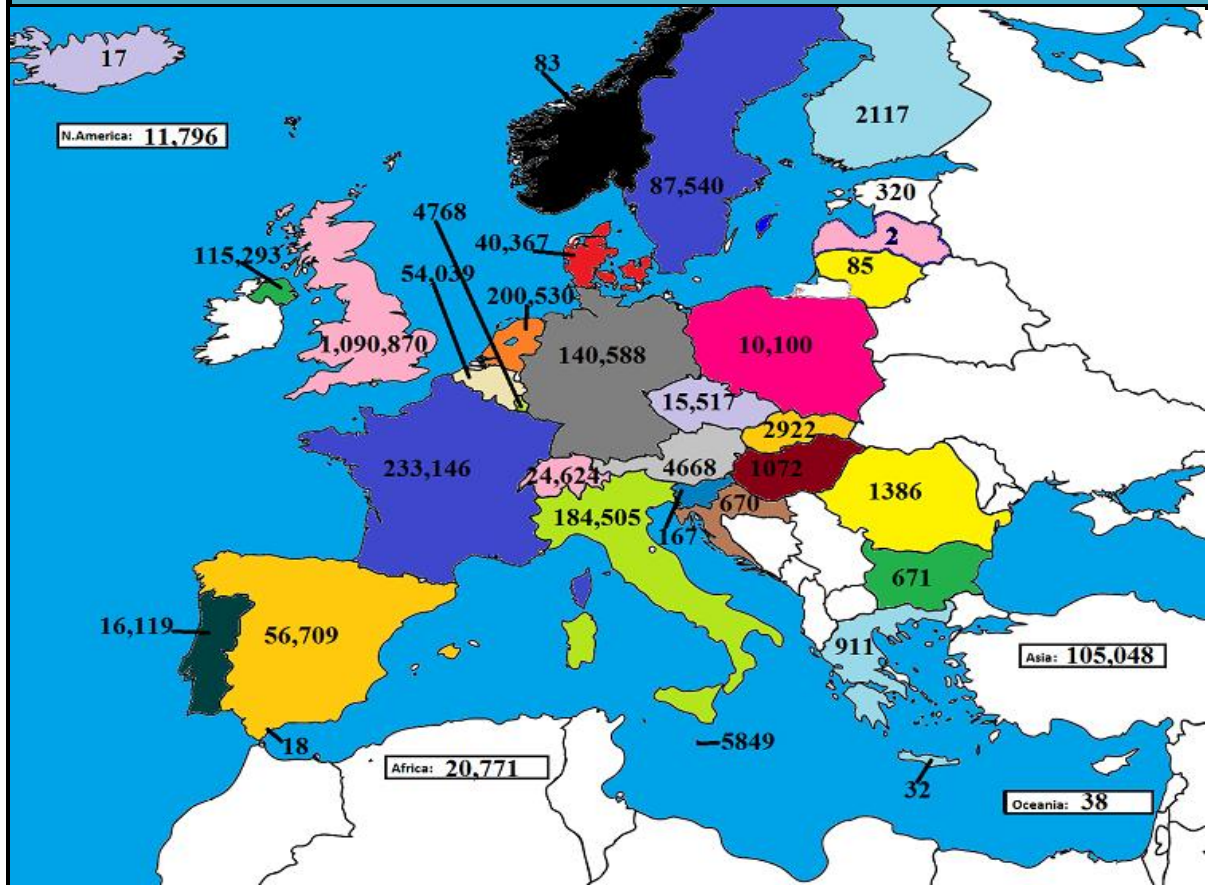




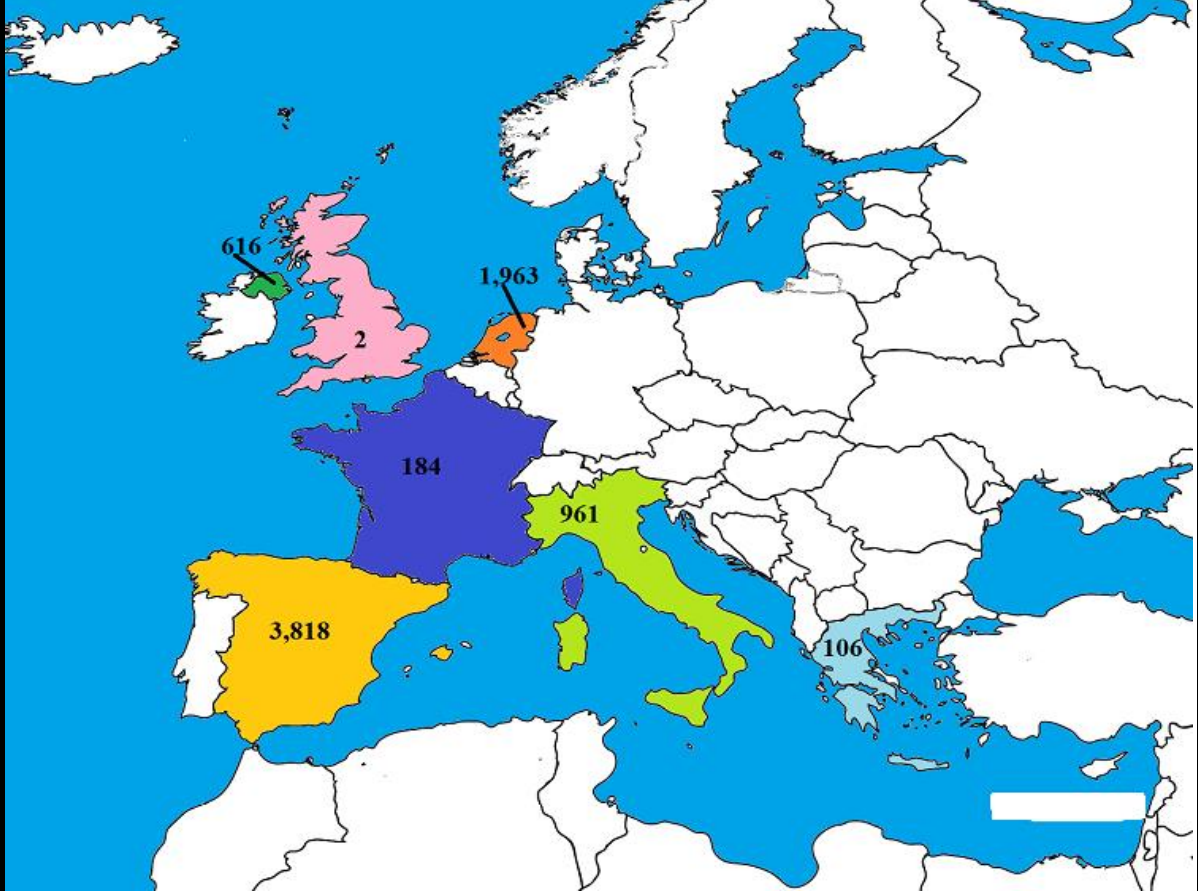
March 2019 Beef exports, €000 (CSO figures)



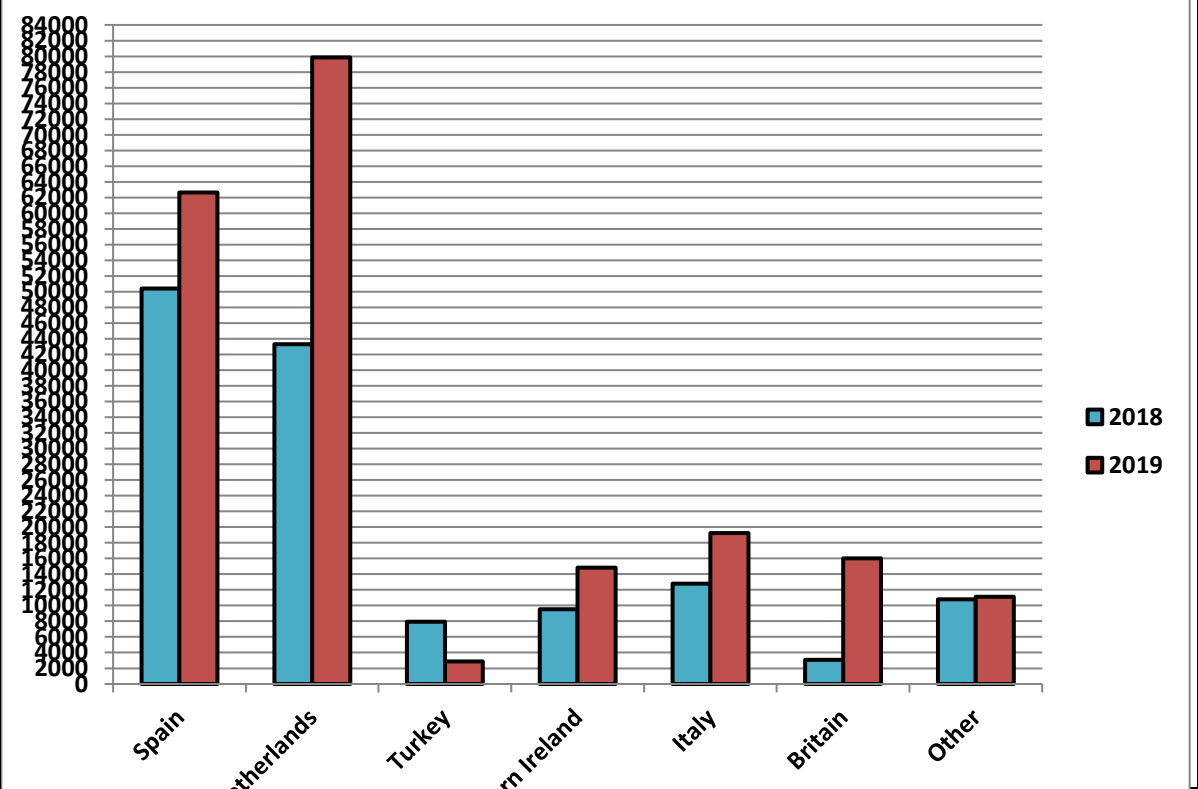
Cumulative beef exports to Dec 2018, €000 (CSO figures)

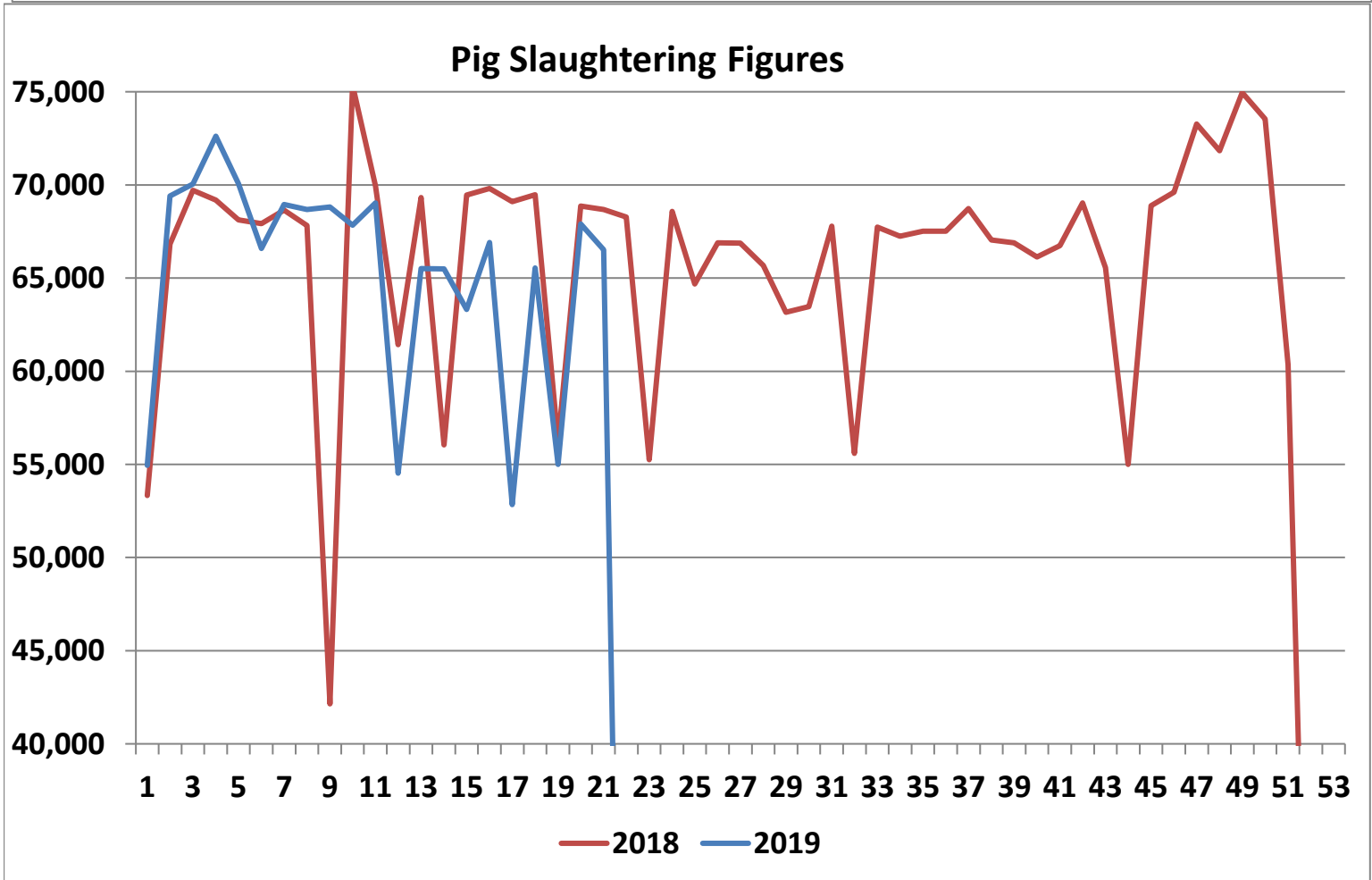
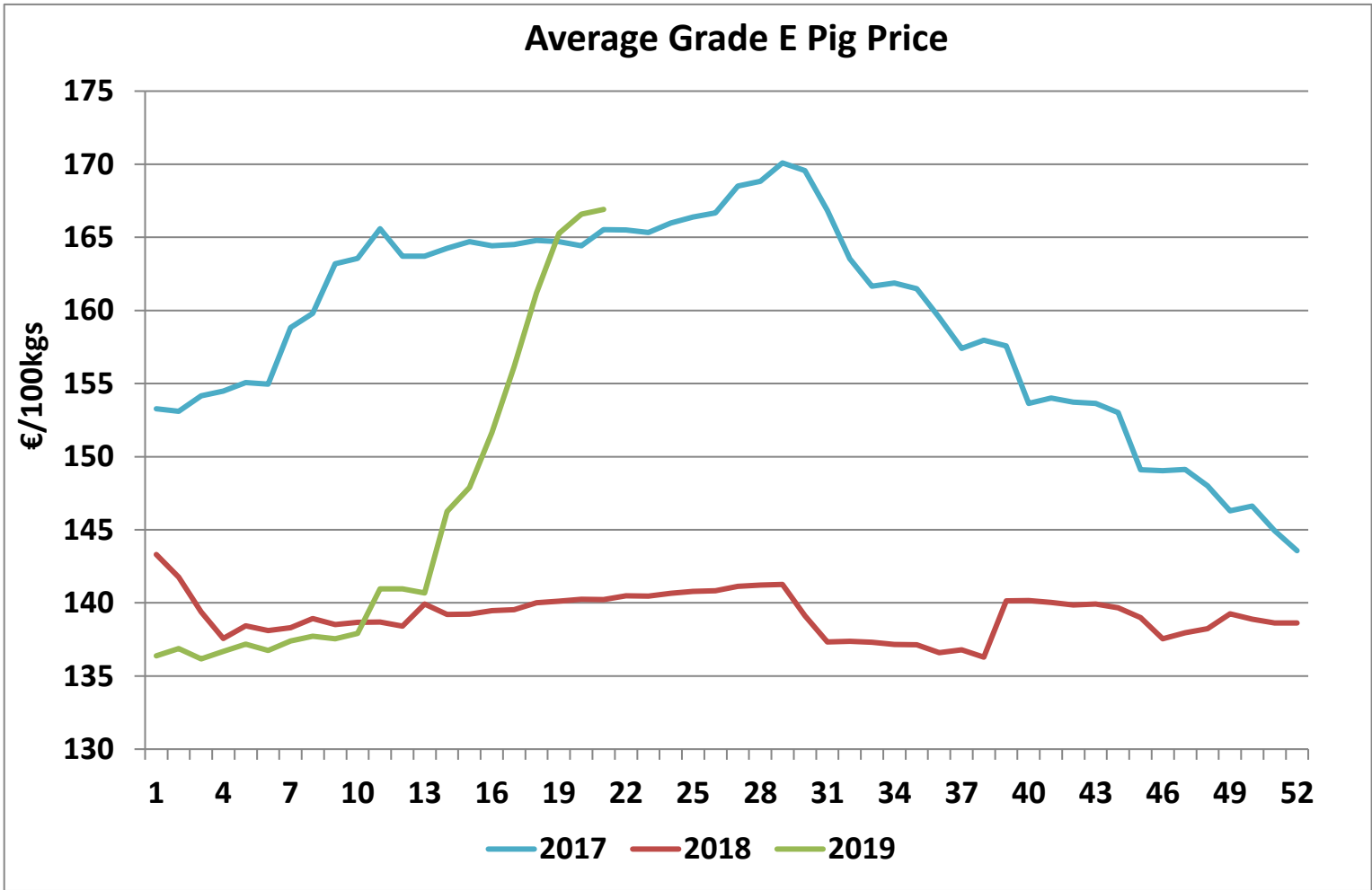


Cattle exported, w/c 20/05/19



Cumulative cattle export figures, 2019





**Sheepmeat Information for Week 21**

Irish Prices €/100 kg	2019	2018	Change
Ave Factory Price	483.18	623.73	-22.5%
Ave Mart Price	453.75	559.94	-19.0%
National Ave Price	474.35	604.59	-21.5%
YTD Ave	493.31	524.53	-6.0%

Slaughterings	2019	2018	Change
Weekly	53,847	53,063	1%
YTD	976,761	1,066,368	-8%

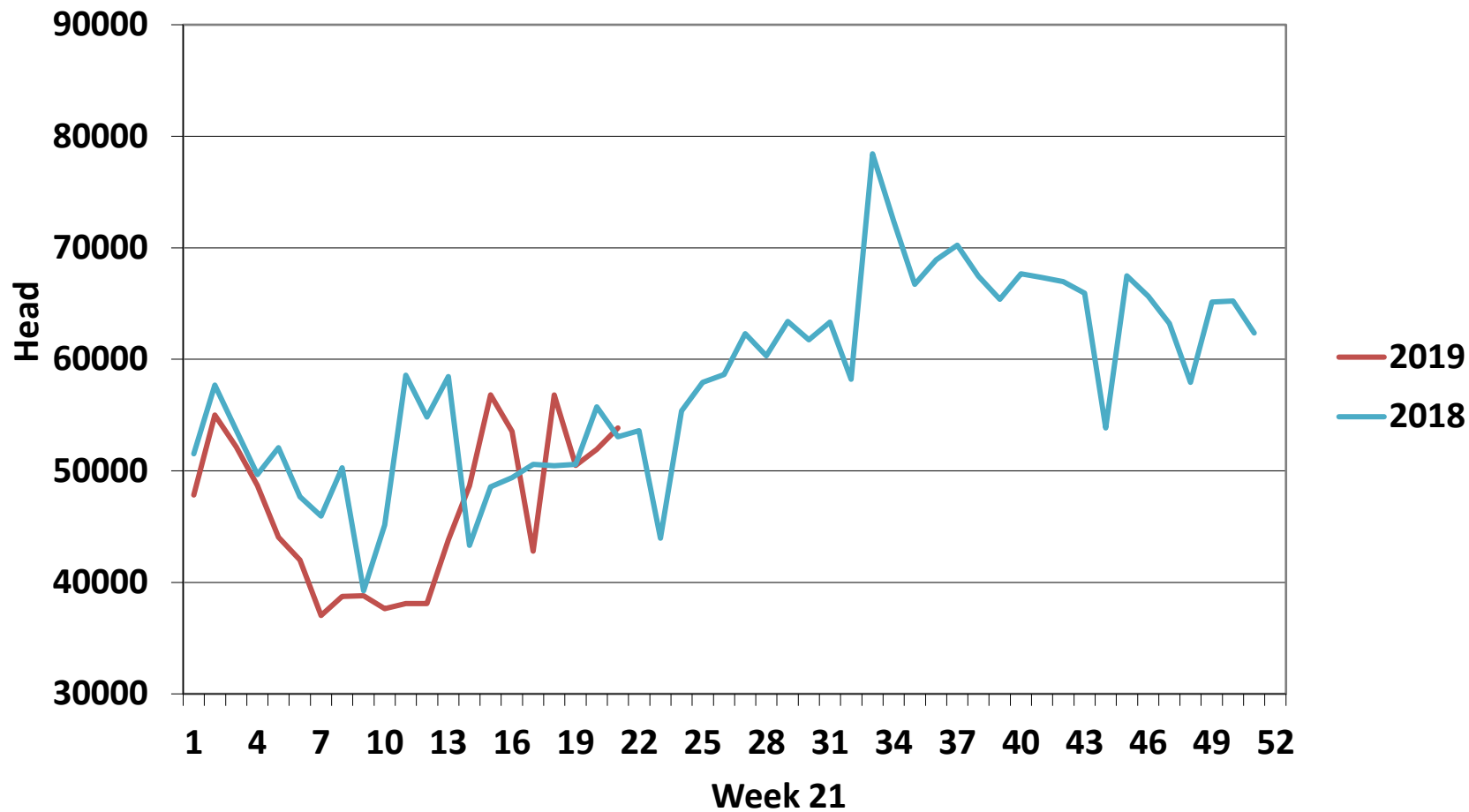
EU Market Rates Heavy Lambs	€/100kg	% of Community Price
Belgium	527.5	97%
Denmark	512.7	94%
Germany	556.0	102%
Spain	512.8	94%
France	620.0	114%
Croatia	489.2	90%
Ireland	474.4	87%
Italy	545.0	100%
Cyprus	453.0	83%
Latvia	394.4	73%
Lithuania	449.3	83%
Netherlands	548.7	101%
Austria	550.0	101%
Poland	446.1	82%
Romania	214.6	39%
Finland	369.6	68%
Sweden	528.3	97%
Northern Ireland	478.8	88%
Great Britain	566.7	104%
United Kingdom	560.4	103%
Community	543.9	100%

**REPORT ON SLAUGHTERING AT SHEEP EXPORT PREMISES  
WEEK 21**

CATEGORY	2019		2018		DIFFERENCE	
	Weekly	Cumulative	Weekly	Cumulative	Weekly	Cumulative
Lambs/Hoggets	16,193	709,283	16,277	801,089	-84	91,806
Spring Lambs	29,981	120,782	27,249	90,094	2,732	30,688
Ewes and Rams	7,673	146,686	9,525	175,095	-1,852	28,409
Light Lambs	-	10	12	90	-12	80
<b>TOTAL</b>	<b>53,847</b>	<b>976,761</b>	<b>53,063</b>	<b>1,066,368</b>	<b>784</b>	<b>-89,607</b>



### Weekly Sheep Slaughtering



### Ave. Price €/100 kg for Sheepmeat

