

Meat Market Report

10/06/19 - 16/06/19

Week

24



**An Roinn Talmhaíochta,
Bia agus Mara**
Department of Agriculture,
Food and the Marine

MARKET SUMMARY

Beef

Deadweight Prices c/100Kg (Including VAT)

	U3	U4	R3	R4	O3	O4	P+
Steers	410.4	412.1	401.8	401.2	383.0	387.1	359.7
Heifers	430.1	427.3	415.6	413.8	397.6	396.0	359.7
Young Bulls	401.7	395.2	387.6	387.6	362.0	363.4	346.6
Cows			333.5	335.1	313.1	315.3	303.7

Liveweight Prices

*Bull Calf Average Price	€180.3 per head (Excluding VAT)
**Young Store Average Price	€218.0 per 100kg (Excluding VAT)
***Yearling (male & female) Price	€199.5 per 100kg (Excluding VAT)

* Aged 8-28 days ** Aged 180-364 days, Male & Female ***age 365-730 days

Slaughterings

34,428 cattle slaughtered this week, of which steers were 10,945 (32%), heifers 9,129 (26%), young bulls 5,284 (15%) and cows 8,075 (24%). Total YTD slaughter is 821,344 compared to 781,737 in 2018, a 5% increase.

Live Trade

5,961 cattle were exported in the week commencing 03/06/2019*; 5,453 to EU (Except NI). Live exports for 2019 amount to 215,603 compared to 165,236 in 2018, up 30% on 2018 levels.

*This data is provisional and subject to revision.

The next meeting of the Management Committee for the Common Organisation of Agricultural Markets (Animal Products Sector) is 23rd May 2019

CONTENTS:

Page 2: Market Summary Beef
 Page 3: Market Summary Other Meats
 Page 4: Beef Price and Slaughter Summary
 Page 5: Comparative Beef Prices
 Page 6: Steer and Young Bull Price
 Page 7: Heifer and Cow Graphs
 Page 8: Price and Slaughter Graphs
 Page 9: Liveweight Beef Graphs

Page 10: Beef Export Maps
 Page 11: Beef Export Info
 Page 12: Pig price and slaughter graphs
 Page 13: Sheep prices and slaughter
 Page 15: Sheep price and slaughter graphs

MARKET SUMMARY

Pigmeat

Grade E Pig
Prices (Ex.
VAT)

The Grade E Pig price for week commencing 10/06/2019 was €173.62 per 100Kg compared to €140.66 in the same week last year, which represents a 23% increase.

Slaughtering

68,018 pigs were slaughtered in week 24 of which 1,794 were sows. The cumulative figure for pig slaughterings in 2019 is 1,560,076 which is a 1% decrease with the same point last year.

Sheepmeat

Sheepmeat
Prices (Ex.
VAT)

The national average price for the week commencing 10/06/2019 was €506.16 per 100Kg, a decrease of 5% over the same week last year.

Slaughtering

54,496 sheep were slaughtered at sheep export premises the week commencing 10/06/2019, compared to 55,380 in the same week of 2018. Sheep slaughterings for 2019 are 7% down on 2018 at 1,137,166 head.

Live Trade

Total live exports to European Countries stood at 20,769 head to the end of 2018.

Poultry

Slaughtering

Cumulative poultry slaughterings for 2019* stand at 46,993,567 birds at the end of week 23, up 9% compared to the same period last year.

*Latest Figures are provisional and subject to change

Dead Weight Prices	W/C	W/C	Same week 2018	% change prev week	% change 2018
	10/06/19	03/06/19	11/06/18		
Steers (R3) (c/kg)	380.9	384.7	409.4	-1.0%	-7.0%
Heifers (R3) (c/kg)	394.4	397.6	421.2	-0.8%	-6.4%
Young Bulls (U3) (c/kg)	380.5	382.7	420.4	-0.6%	-9.5%
Cows (04) (c/kg)	299.4	302.2	341.2	-0.9%	-12.3%

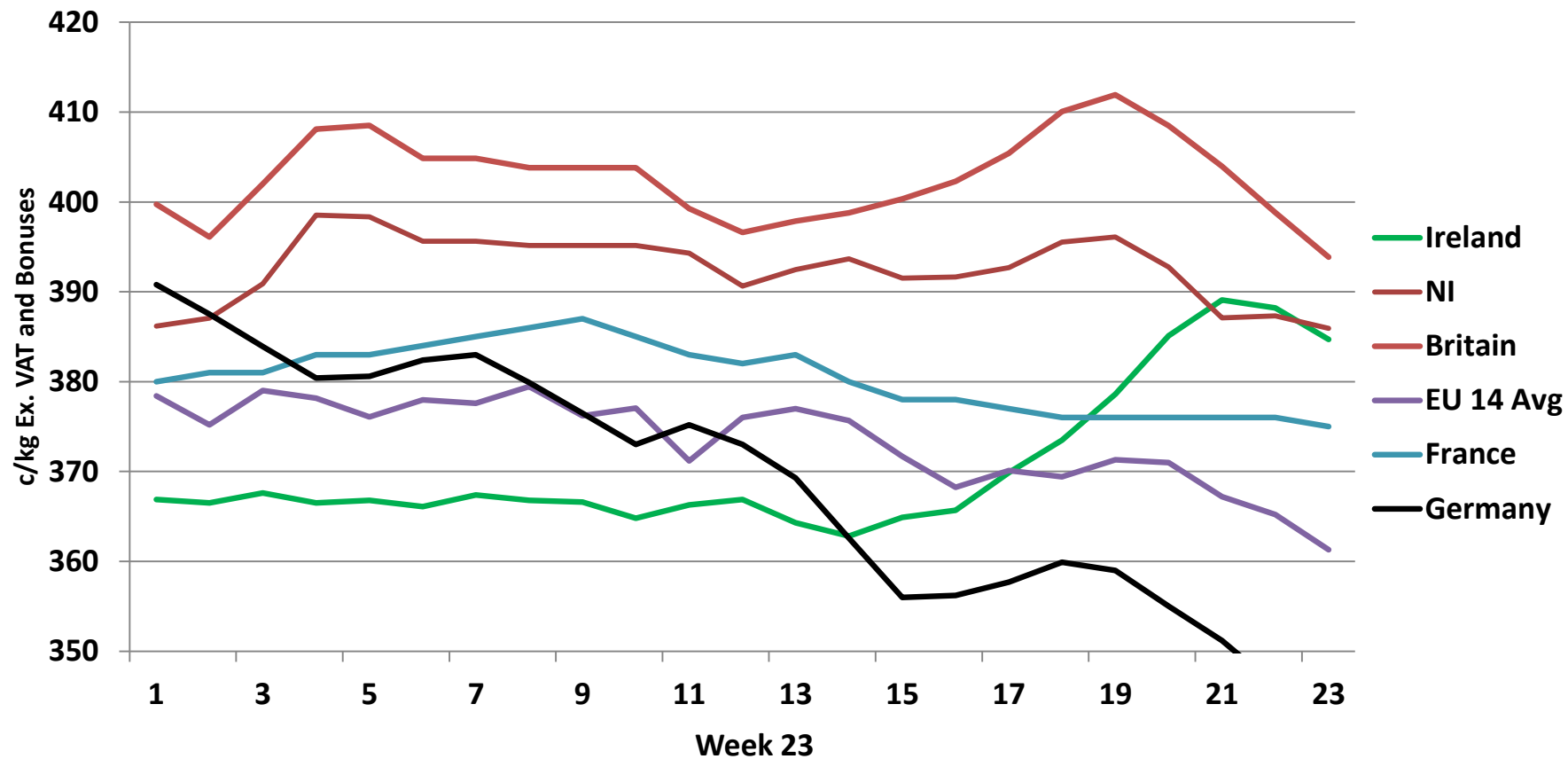
Live Weight Prices	W/C	W/C	Same week 2018	% change previous week	% change 2018
	10/06/19	03/06/19	11/06/18		
Yearlings (Male) (Aged 365 - 730 days) - (€/100Kg)	193	197	206	-2.0%	-6.3%
Yearlings (Female) (Aged 365 - 730 days) - (€/100Kg)	206	208	213	-1.0%	-3.3%
Young Stores (Male & Female) (Aged 180 - 364 days) - (€/100Kg)	218	224	236	-2.7%	-7.6%
Bull Calf (€/head) Dairy	170.2	150.0	167.2	13.5%	1.8%
Bull Calf (€/head) Beef	190.5	199.7	223.2	-4.6%	-14.7%
Bull Calf (€/head) Average	180.3	174.8	195.2	3.1%	-7.6%

Slaughter Figures	% of weekly figures	W/C	Same week 2018	Year to Date		Change 2019 v 2018	
		10-Jun-19		2019	2018	Head	%
Steers	31.8%	10,945	10,791	264,913	269,594	-4,681	-1.7%
Cows	23.5%	8,075	8,286	168,792	168,738	54	0.0%
Heifers	26.5%	9,129	9,073	247,908	223,536	24,372	10.9%
Young Bulls	15.3%	5,284	5,196	120,887	105,218	15,669	14.9%
Mature Bulls	2.9%	995	720	18,844	14,651	4,193	28.6%
Total	100%	34,428	34,066	821,344	781,737	39,607	5.1%

821

Live Exports	W/C	Same week	W/C	Year to Date		Change 2019 v 2018	
	3-Jun-19	2018	27-May-19	2019	2018	Head	%
Northern Ireland	508	359	650	16,123	8,218	7,905	96%
EU Except NI	5,453	4,343	5,868	191,746	148,098	43,648	29%
Third Countries	0	0	0	7,734	8,920	-1,186	-
Total	5,961	4,702	6,518	215,603	165,236	50,367	30%
Calves YTD:	178,044			Adult YTD:Cattle		37,430	

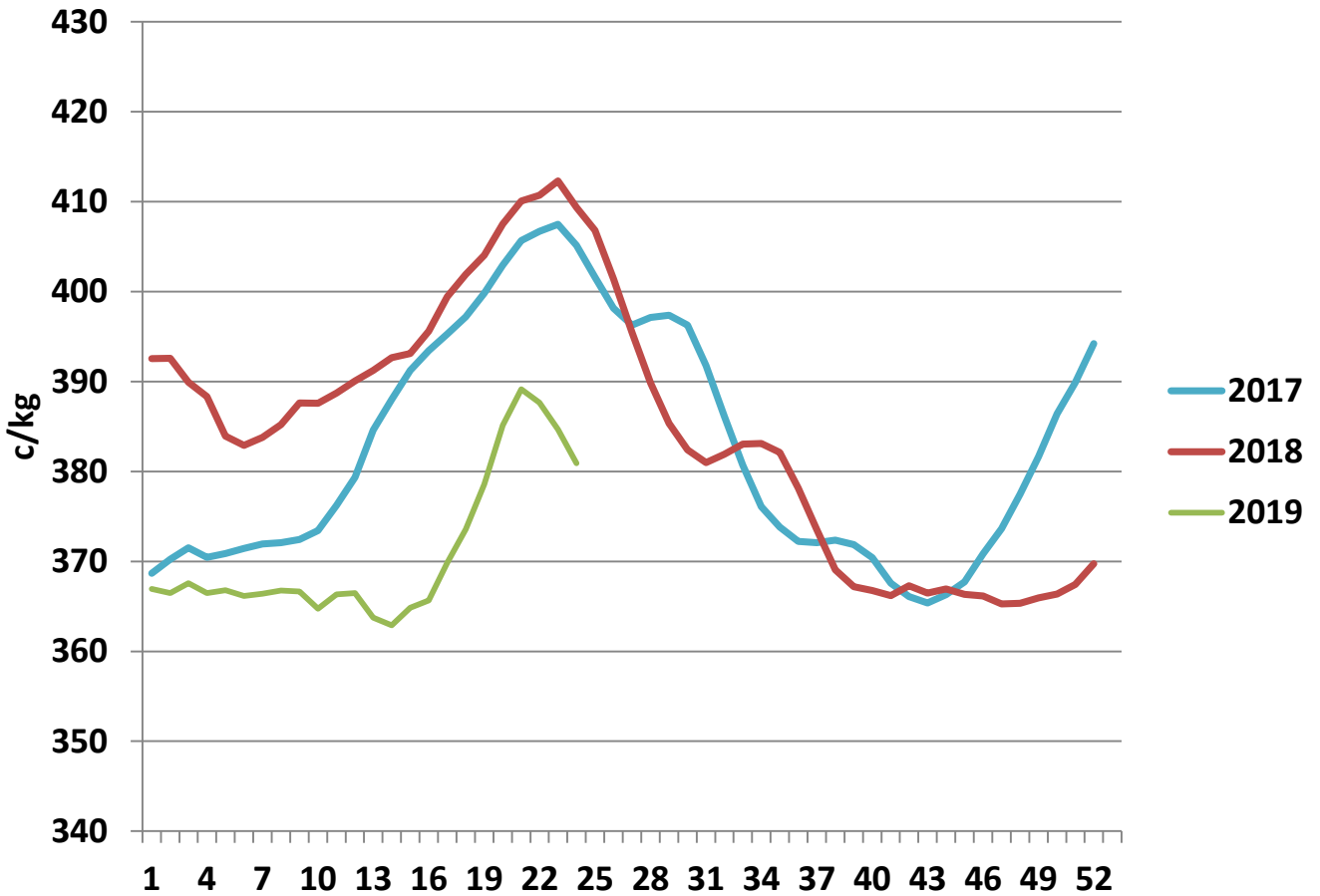
Irish Deadweight Cattle Prices vs Selected Other Markets, 2019



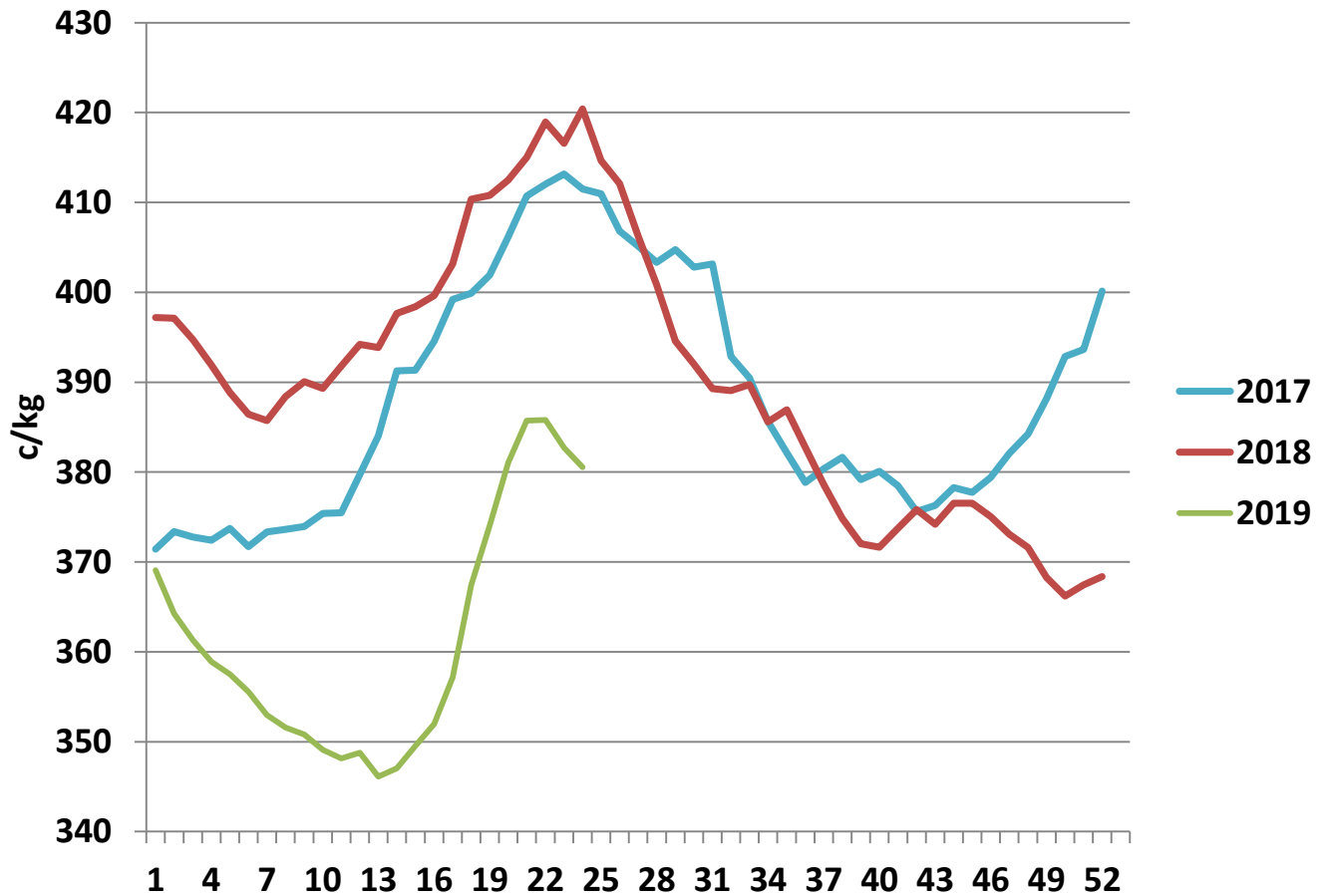
Livestock Pricing

	Ireland	NI	Britain	EU 14 Average	France	Germany
W/C 03/06/19	384.7	385.92	393.86	361.3	375	342

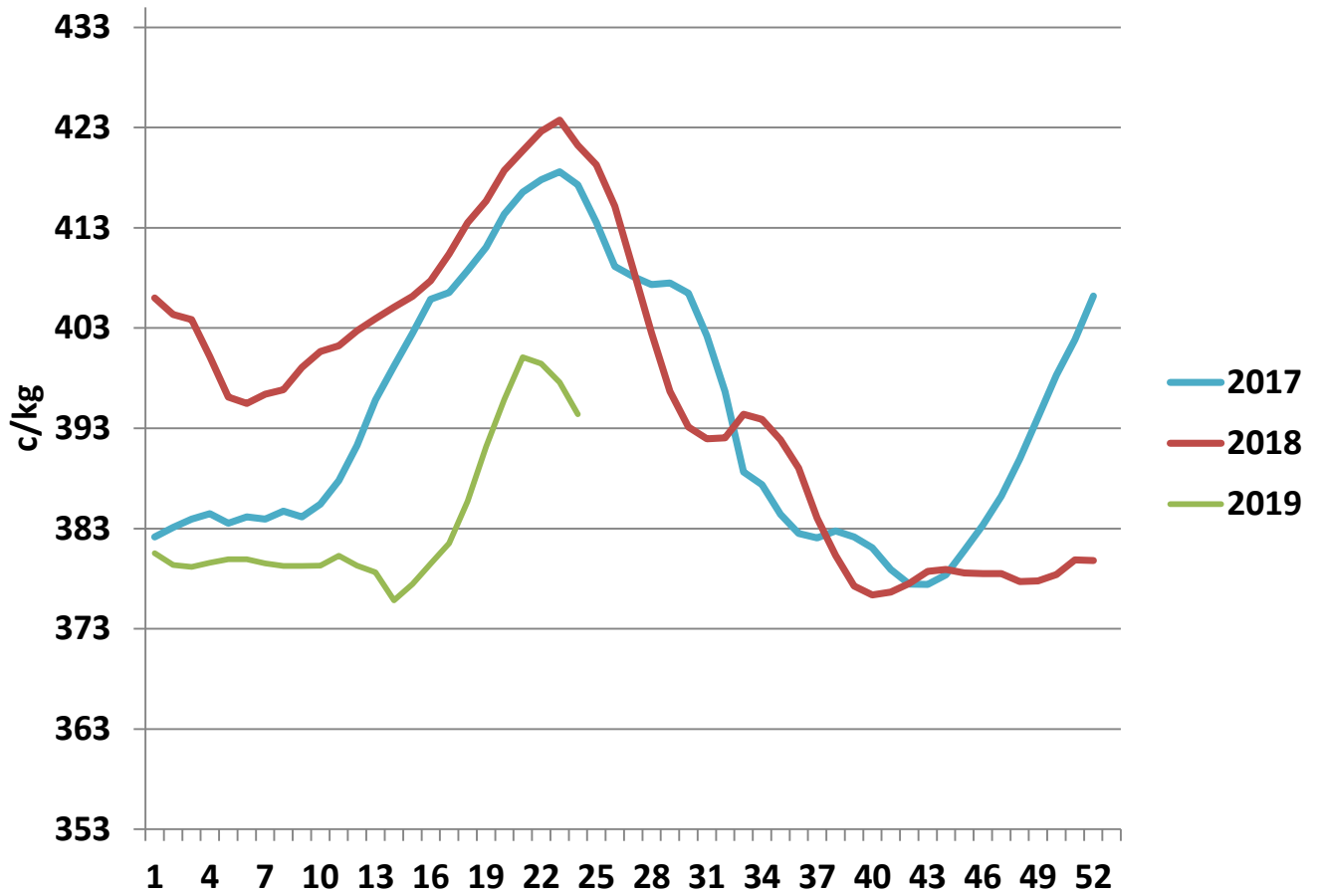
R3 Steer prices ex. VAT



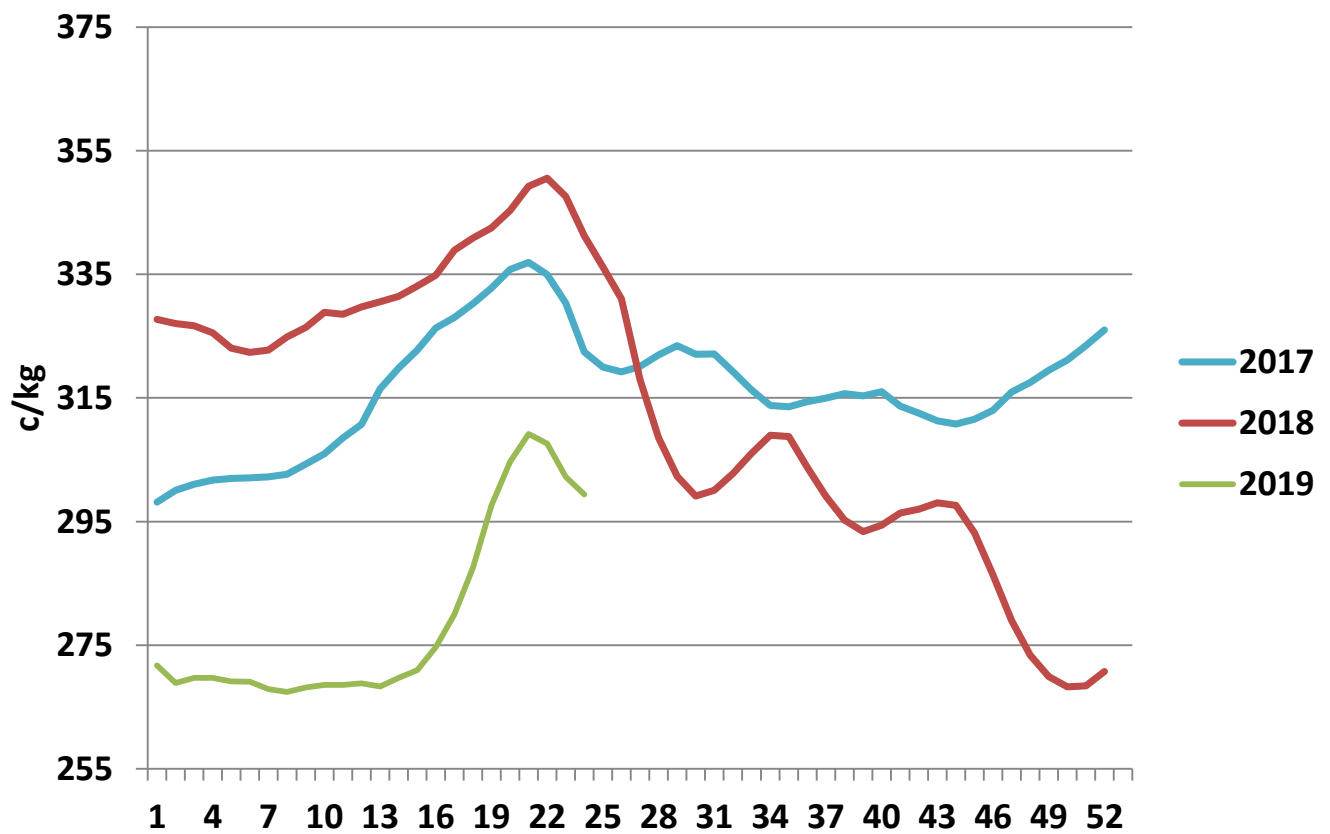
U3 Young Bull prices ex. VAT

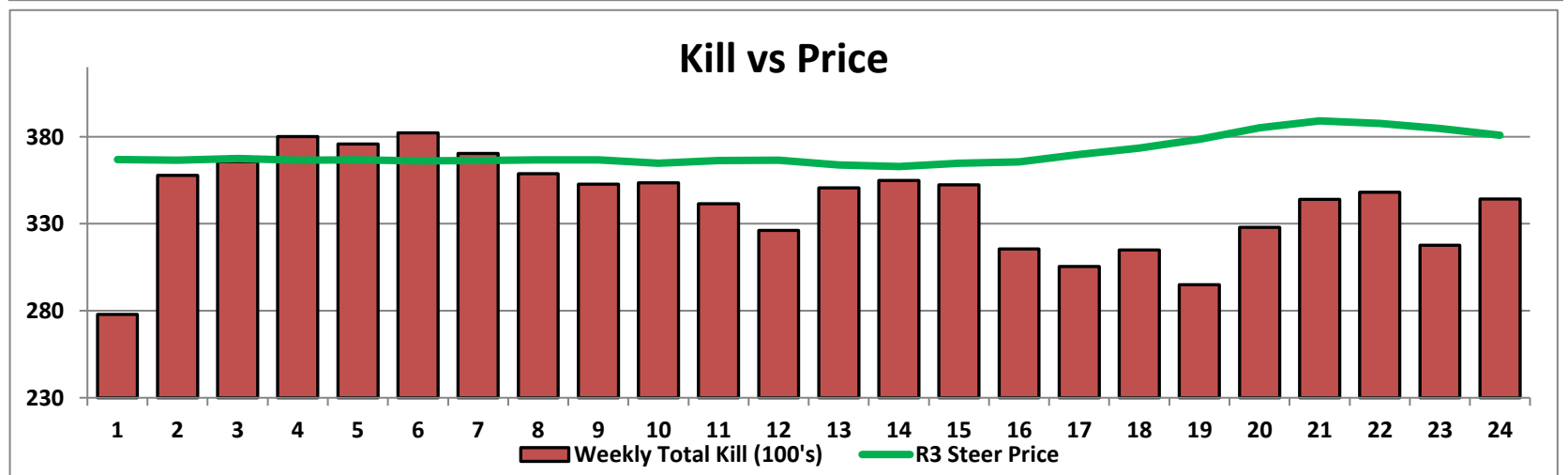
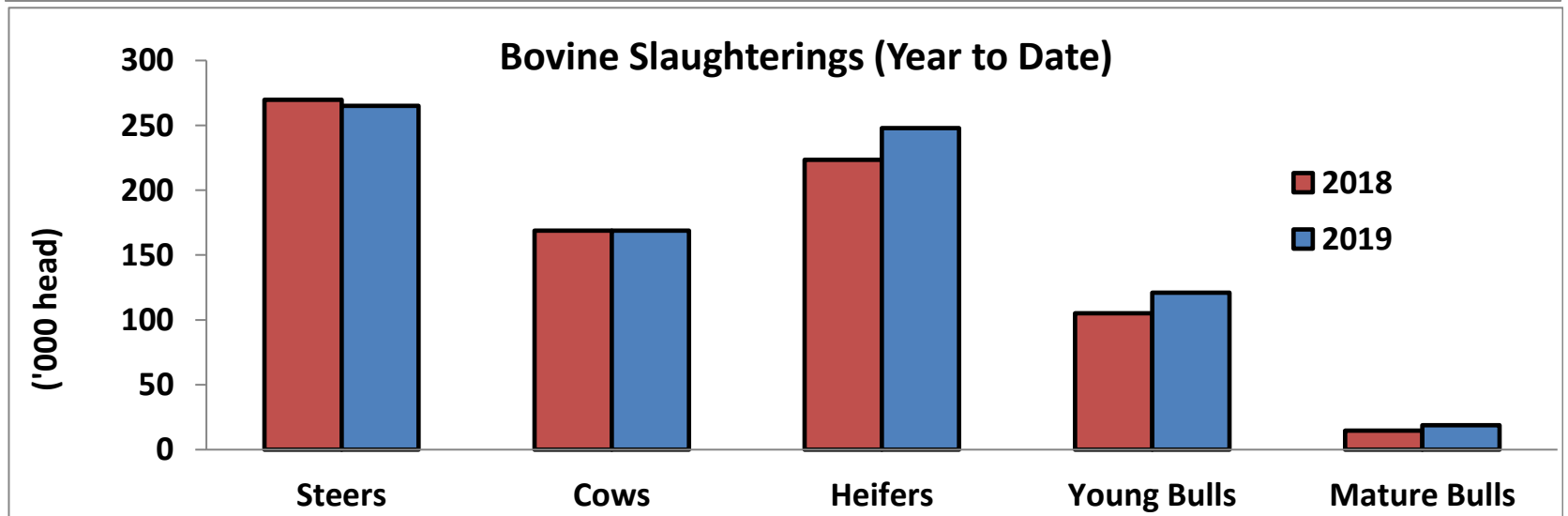
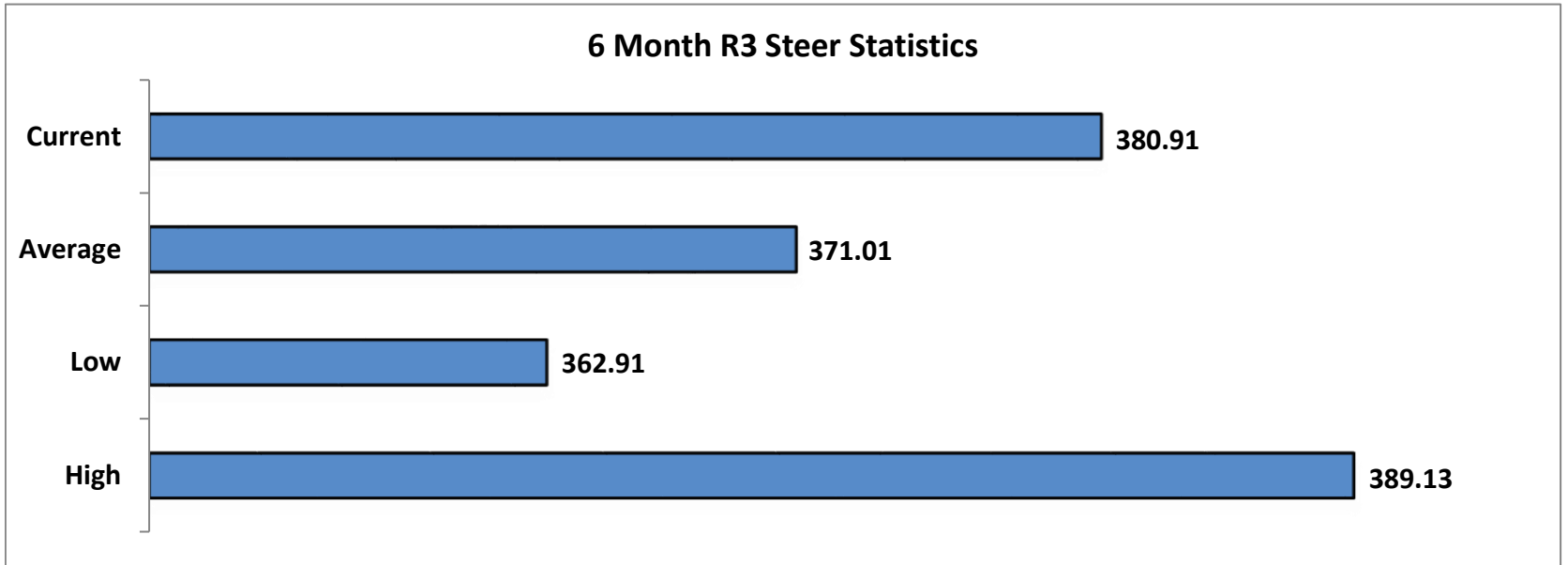


R3 Heifer prices ex. VAT

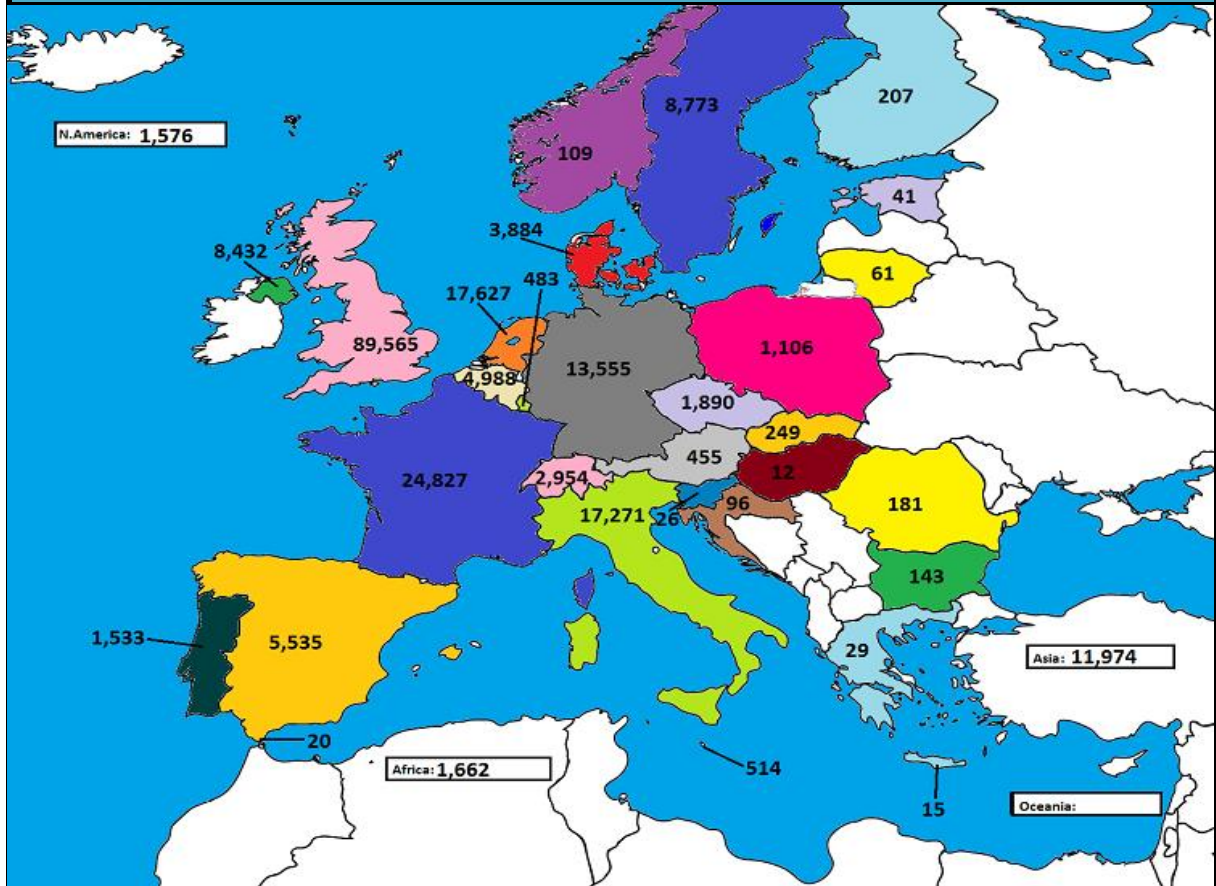


O4 Cow prices ex. VAT

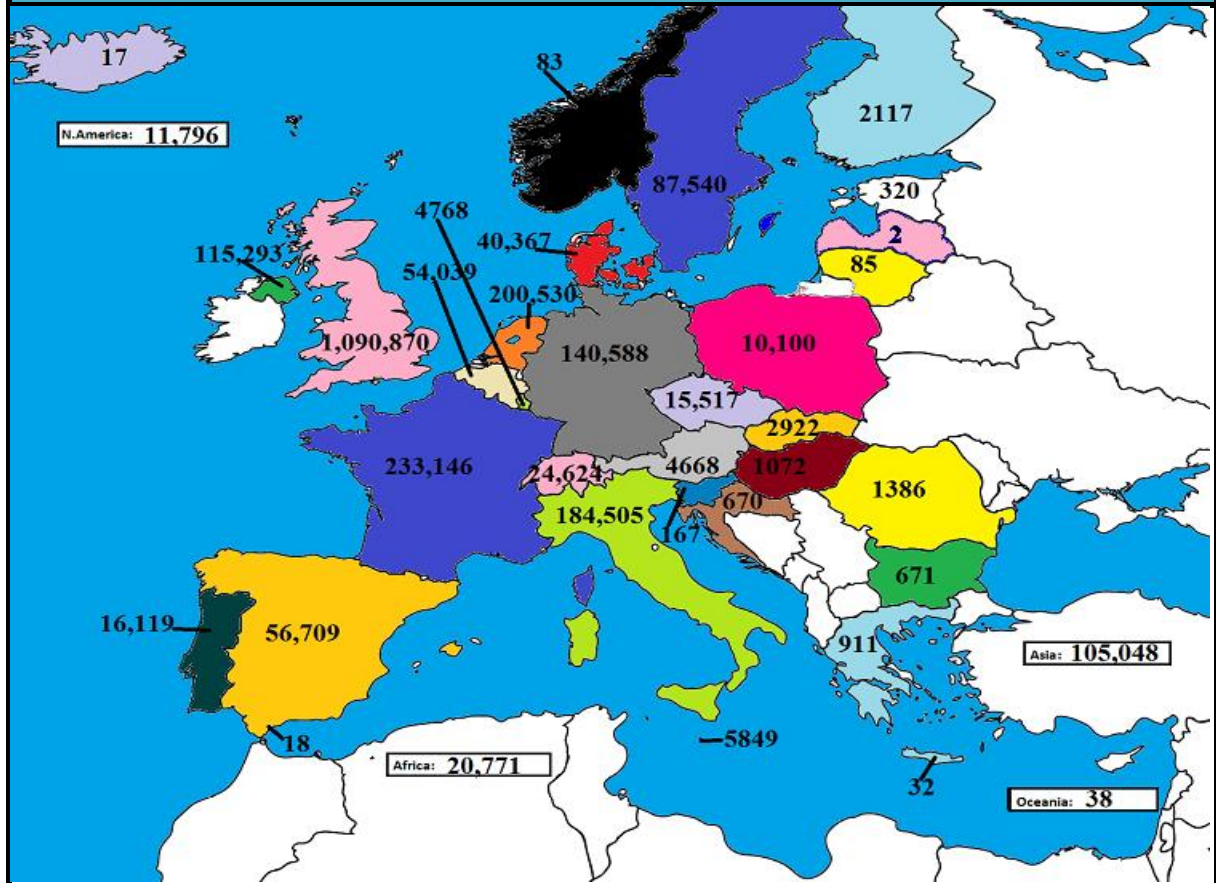




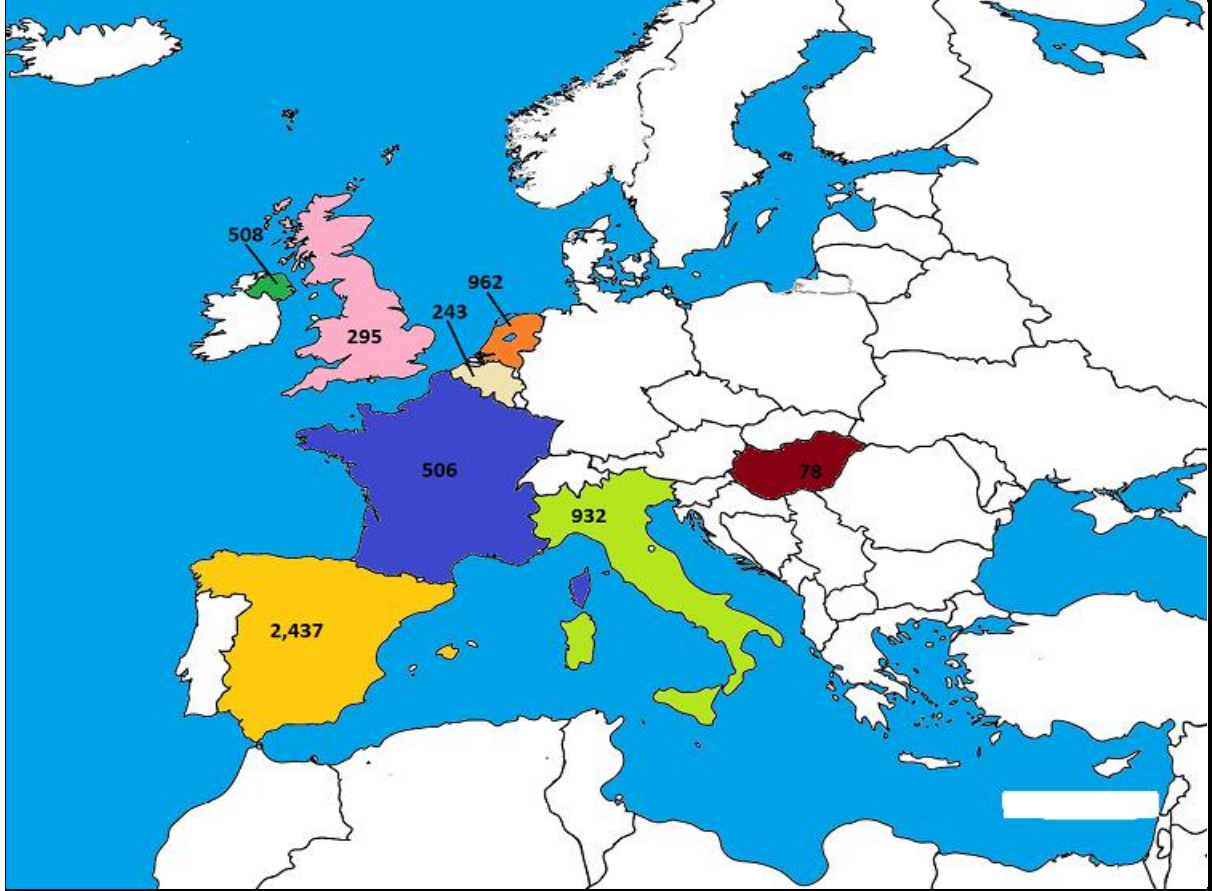
March 2019 Beef exports, €000 (CSO figures)



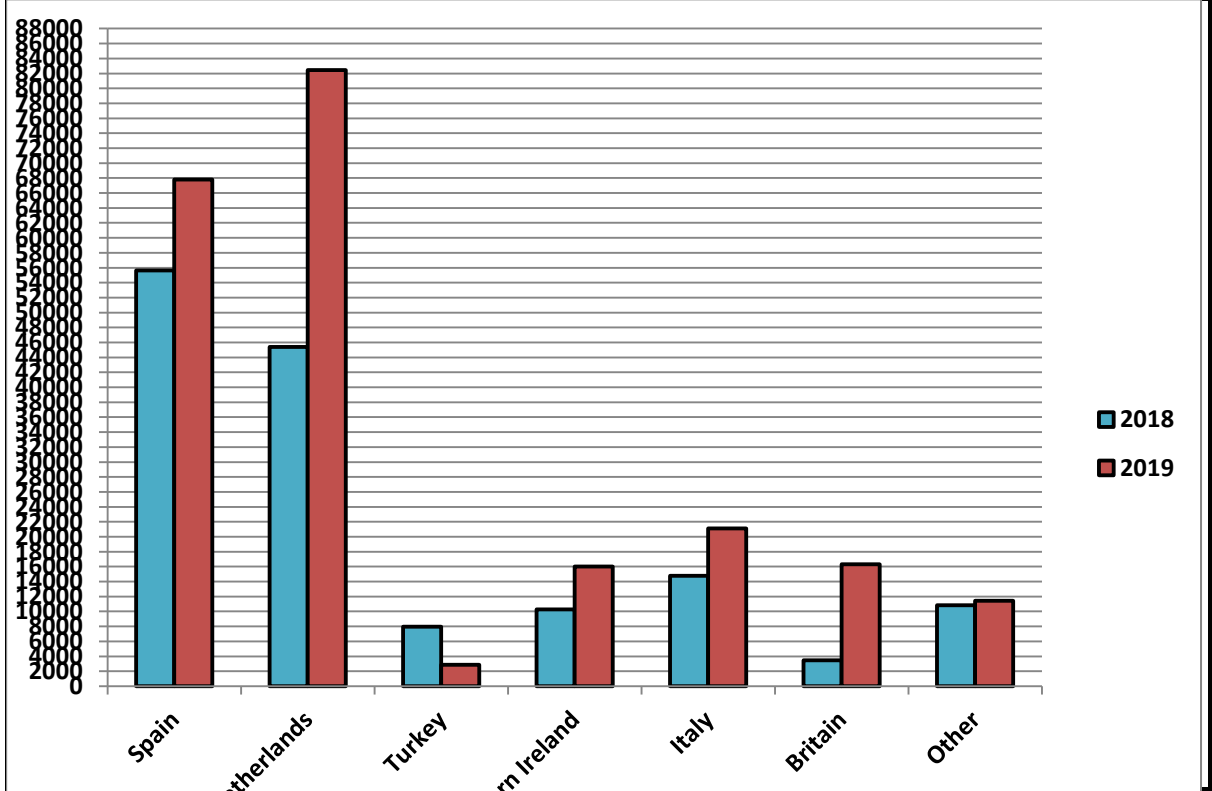
Cumulative beef exports to Dec 2018, €000 (CSO figures)

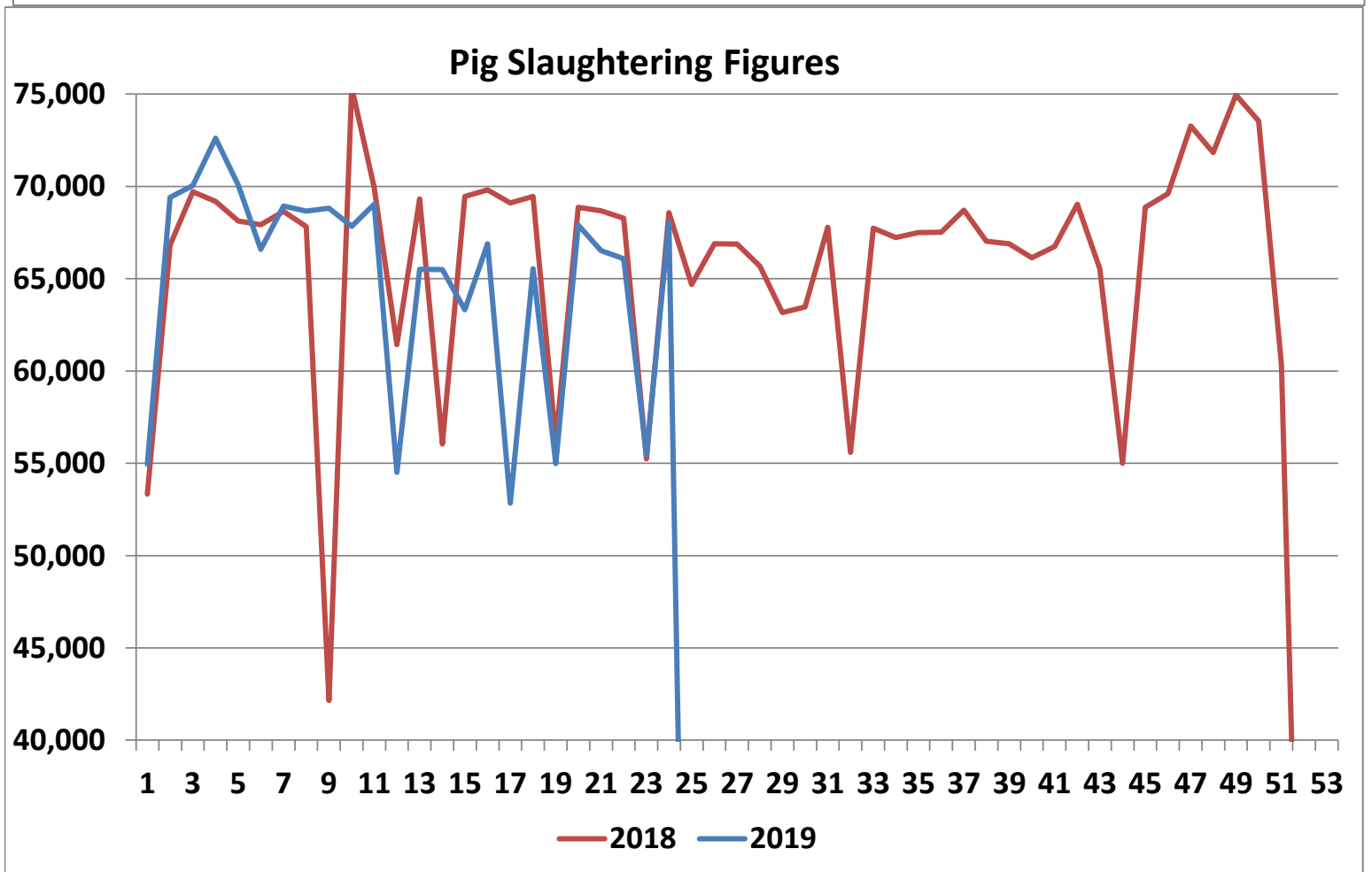
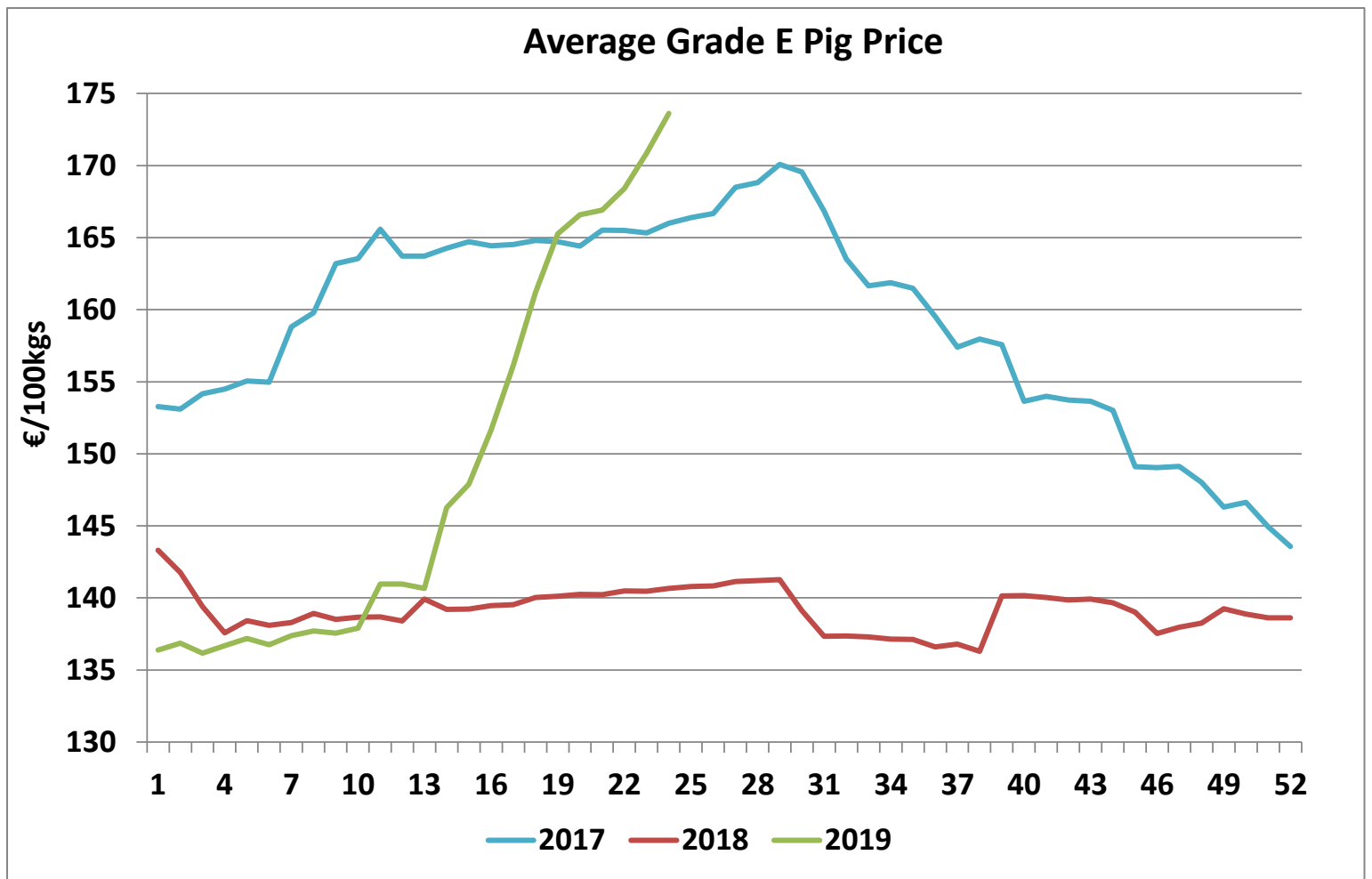


Cattle exported, w/c 03/06/19



Cumulative cattle export figures, 2019





Sheepmeat Information for Week 24

Irish Prices €/100 kg	2019	2018	Change
Ave Factory Price	516.78	555.80	-7.0%
Ave Mart Price	481.38	477.99	0.7%
National Ave Price	506.16	532.46	-4.9%
YTD Ave	493.78	525.77	-6.1%

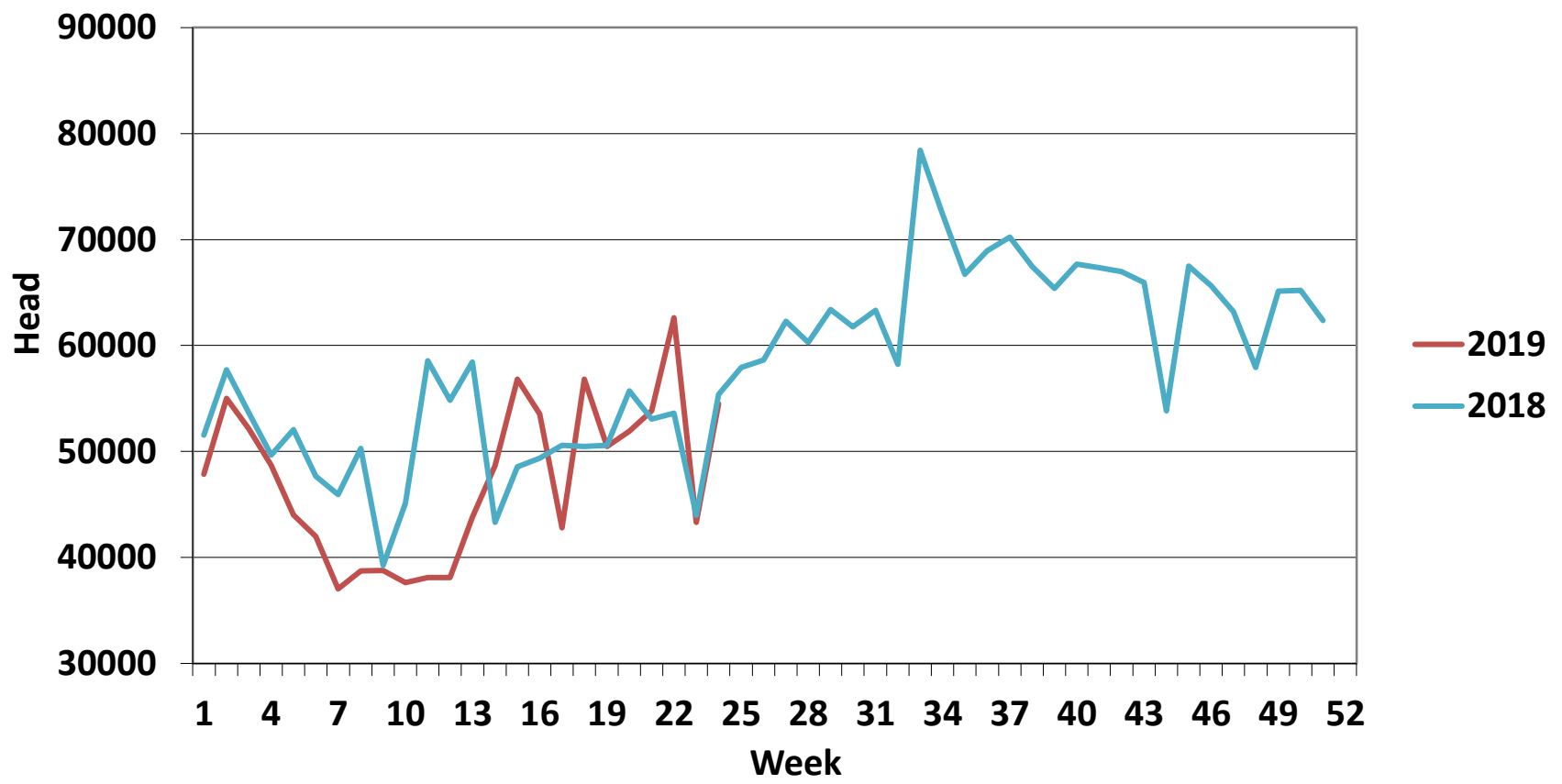
Slaughterings	2019	2018	Change
Weekly	54,496	55,380	-2%
YTD	1,137,166	1,219,321	-7%

EU Market Rates Heavy Lambs	€/100kg	% of Community Price
Belgium	518.4	96%
Denmark	512.7	96%
Germany	547.8	103%
Spain	492.2	93%
France	603.0	115%
Croatia	604.3	117%
Ireland	493.7	92%
Italy	538.0	101%
Cyprus	447.0	84%
Latvia	471.3	76%
Lithuania	383.8	88%
Netherlands	536.7	102%
Austria	545.0	102%
Poland	436.7	82%
Romania	229.6	38%
Finland	369.7	70%
Sweden	564.4	106%
Northern Ireland	464.8	87%
Great Britain	533.0	102%
United Kingdom	528.1	101%
Community	529.5	100%

**REPORT ON SLAUGHTERING AT SHEEP EXPORT PREMISES
WEEK 24**

CATEGORY	2019		2018		DIFFERENCE	
	Weekly	Cumulative	Weekly	Cumulative	Weekly	Cumulative
Lambs/Hoggets	4,302	730,960	3,884	820,910	418	89,950
Spring Lambs	43,349	238,015	42,920	197,442	429	40,573
Ewes and Rams	6,822	168,157	8,560	200,858	-1,738	32,701
Light Lambs	23	34	16	111	7	77
TOTAL	54,496	1,137,166	55,380	1,219,321	-884	82,155

Weekly Sheep Slaughterings



Ave. Price €/100 kg for Sheepmeat

