

Meat Market Report

15/07/19 - 21/07/19

Week
29



**An Roinn Talmhaíochta,
Bia agus Mara**
Department of Agriculture,
Food and the Marine

MARKET SUMMARY

Beef

Deadweight Prices c/100Kg (Including VAT)

	U3	U4	R3	R4	O3	O4	P+
Steers	382.6	380.6	372.3	371.5	355.8	355.8	330.9
Heifers	401.0	400.3	384.9	384.4	369.4	367.2	331.9
Young Bulls	373.5	367.0	360.8	363.8	333.4	340.0	317.6
Cows			314.3	314.6	296.7	297.2	289.9

Liveweight Prices

*Bull Calf Average Price	€183.0 per head (Excluding VAT)
**Young Store Average Price	€204.0 per 100kg (Excluding VAT)
***Yearling (male & female) Price	€186.5 per 100kg (Excluding VAT)

* Aged 8-28 days ** Aged 180-364 days, Male & Female ***age 365-730 days

Slaughterings

34,783 cattle slaughtered this week, of which steers were 13,147 (38%), heifers 9,142 (26%), young bulls 4,001 (12%) and cows 7,687 (22%). Total YTD slaughter is 995,670 compared to 955,494 in 2018, a 4% increase.

Live Trade

1,798 cattle were exported in the week commencing 15/07/2019*; 1,216 to EU (Except NI). Live exports for 2019 amount to 232,999 compared to 187,775 in 2018, up 24% on 2018 levels.

*This data is provisional and subject to revision.

The next meeting of the Management Committee for the Common Organisation of Agricultural Markets (Animal Products Sector) is 29th August 2019

CONTENTS:

Page 2: Market Summary Beef
 Page 3: Market Summary Other Meats
 Page 4: Beef Price and Slaughter Summary
 Page 5: Comparative Beef Prices
 Page 6: Steer and Young Bull Price
 Page 7: Heifer and Cow Graphs
 Page 8: Price and Slaughter Graphs
 Page 9: Liveweight Beef Graphs

Page 10: Beef Export Maps
 Page 11: Beef Export Info
 Page 12: Pig price and slaughter graphs
 Page 13: Sheep prices and slaughter
 Page 15: Sheep price and slaughter graphs

MARKET SUMMARY

Pigmeat

Grade E Pig
Prices (Ex.
VAT)

The Grade E Pig price for week commencing 15/07/2019 was €175.50 per 100Kg compared to €141.26 in the same week last year, which represents a 24% increase.

Slaughtering

64,809 pigs were slaughtered in week 29 of which 1,722 were sows. The cumulative figure for pig slaughterings in 2019 is 1,883,417, which is a 1% decrease with the same point last year.

Sheepmeat

Sheepmeat
Prices (Ex.
VAT)

The national average price for the week commencing 15/07/2019 was €437.27 per 100Kg, a decrease of 1.5% over the same week last year.

Slaughtering

60,260 sheep were slaughtered at sheep export premises the week commencing 15/07/2019, compared to 63,384 in the same week of 2018. Sheep slaughterings for 2019 are 6% down on 2018 at 1,430,860 head.

Live Trade

Total live exports to European Countries stood at 20,769 head to the end of 2018.

Poultry

Slaughtering

Cumulative poultry slaughterings for 2019* stand at 54,955,454 birds at the end of week 27, up 9% compared to the same period last year.

*Latest Figures are provisional and subject to change

Dead Weight Prices	W/C	W/C	Same week 2018	% change prev week	% change 2018
	15/07/19	08/07/19	16/07/18		
Steers (R3) (c/kg)	353.2	359.4	385.4	-1.7%	-8.3%
Heifers (R3) (c/kg)	365.2	372.4	396.7	-1.9%	-7.9%
Young Bulls (U3) (c/kg)	354.4	361.9	394.6	-2.1%	-10.2%
Cows (04) (c/kg)	282.0	284.5	302.3	-0.9%	-6.7%

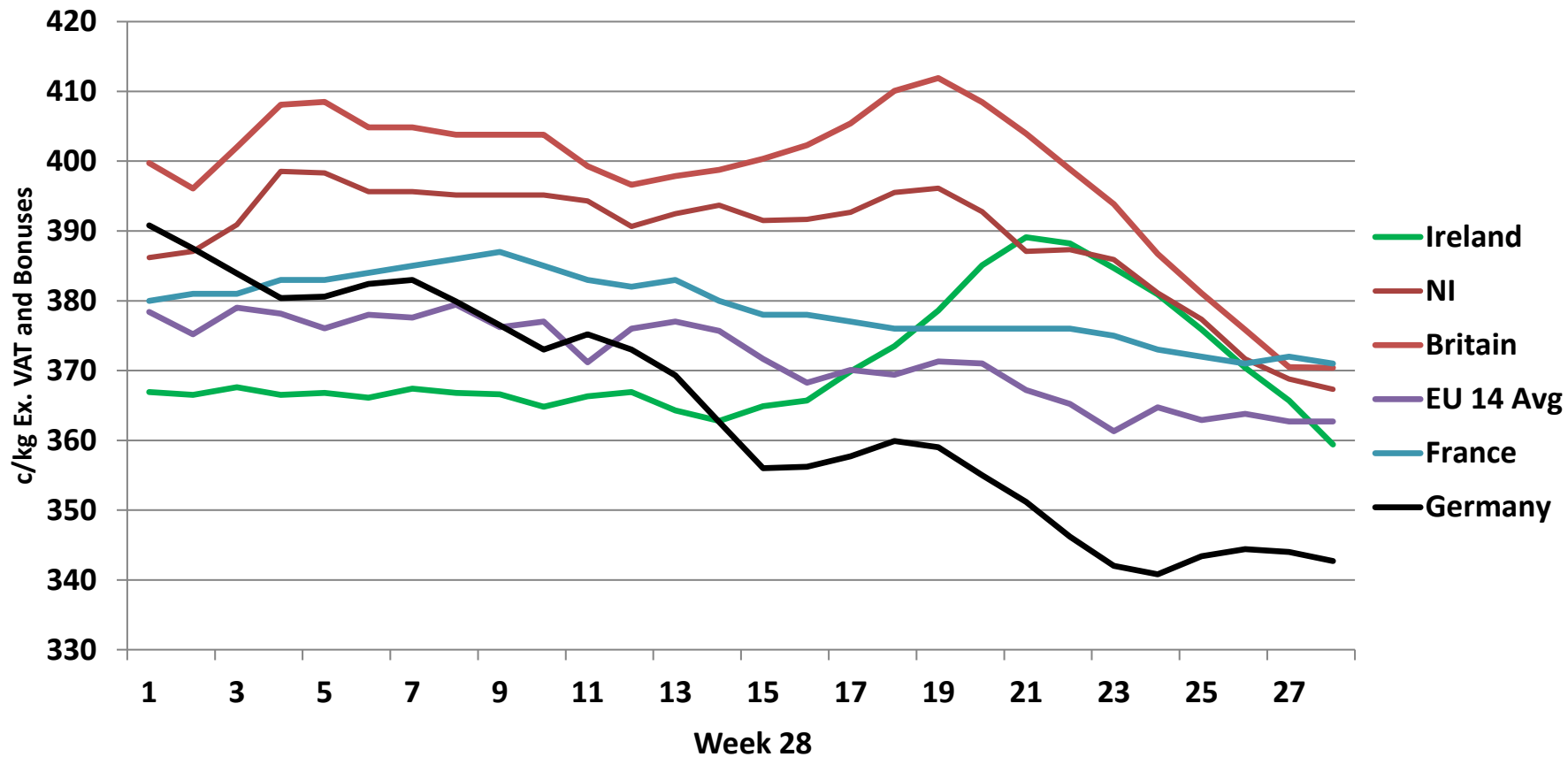
Live Weight Prices	W/C	W/C	Same week 2018	% change previous week	% change 2018
	15/07/19	08/07/19	16/07/18		
Yearlings (Male) (Aged 365 - 730 days) - (€/100Kg)	183	187	183	-2.1%	0.0%
Yearlings (Female) (Aged 365 - 730 days) - (€/100Kg)	190	190	192	0.0%	-1.0%
Young Stores (Male & Female) (Aged 180 - 364 days) - (€/100Kg)	204	211	221	-3.3%	-7.7%
Bull Calf (€/head) Dairy	143.1	135.8	159.8	5.4%	-10.5%
Bull Calf (€/head) Beef	222.8	175.7	191.3	26.8%	16.5%
Bull Calf (€/head) Average	183.0	155.8	175.6	17.5%	4.2%

Slaughter Figures	% of weekly figures	W/C	Same week 2018	Year to Date		Change 2019 v 2018	
		15-Jul-19		2019	2018	Head	%
Steers	37.8%	13,147	14,444	323,493	331,618	-8,125	-2.5%
Cows	22.1%	7,687	8,350	209,114	212,967	-3,853	-1.8%
Heifers	26.3%	9,142	9,168	296,628	267,534	29,094	10.9%
Young Bulls	11.5%	4,001	3,579	143,709	125,917	17,792	14.1%
Mature Bulls	2.3%	806	626	22,726	17,458	5,268	30.2%
Total	100%	34,783	36,167	995,670	955,494	40,176	4.2%

821

Live Exports	W/C	Same week	W/C	Year to Date		Change 2019 v 2018	
	15-Jul-19	2018	08-Jul-19	2019	2018	Head	%
Northern Ireland	582	205	269	18,635	9,539	9,096	95%
EU Except NI	1,216	2,498	1,990	206,465	164,534	41,931	25%
Third Countries	0	3,719	0	7,899	13,702	-5,803	-
Total	1,798	6,422	2,259	232,999	187,775	45,224	24%
Calves YTD:	188,803			Adult YTD:Cattle		44,067	

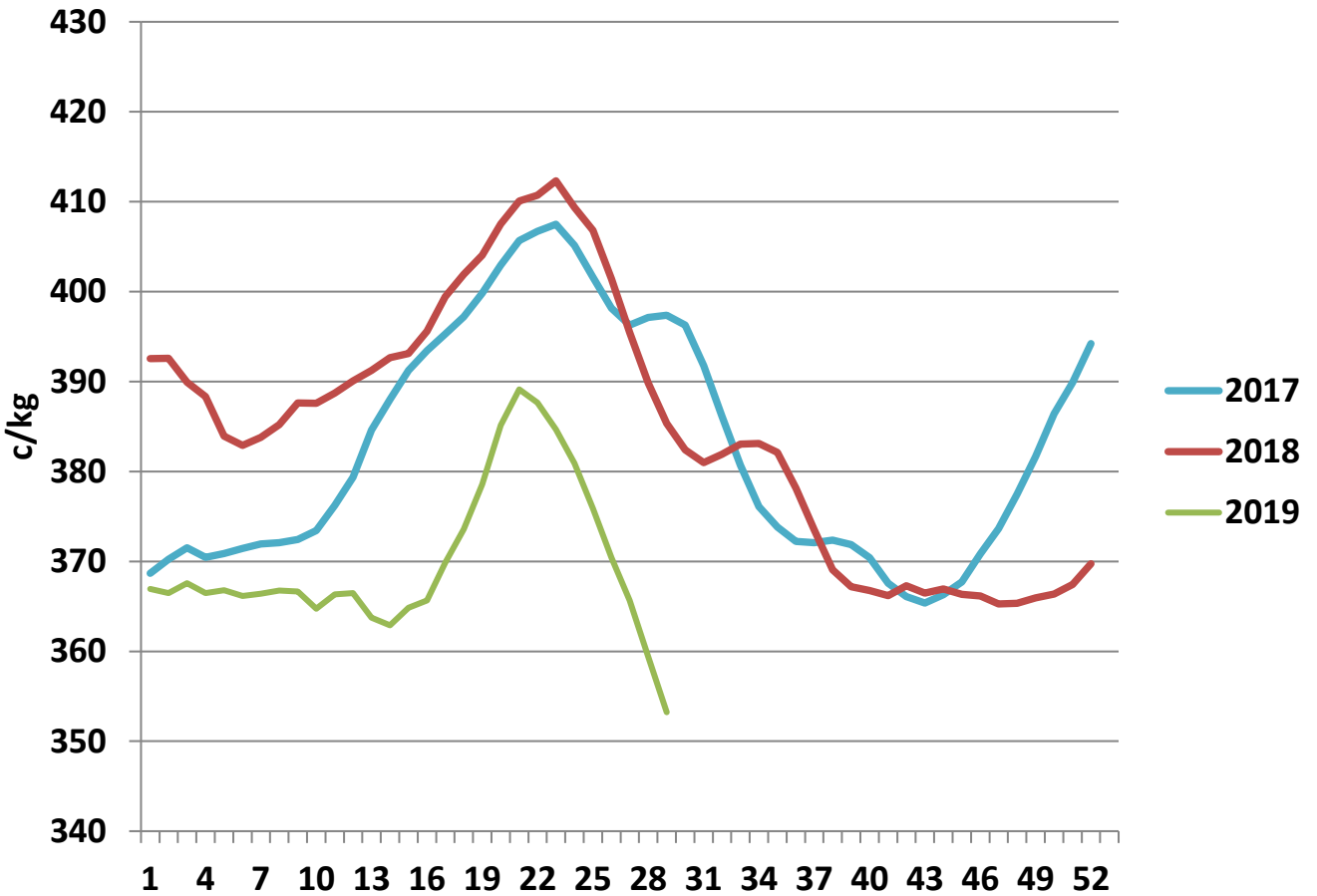
Irish Deadweight Cattle Prices vs Selected Other Markets, 2019



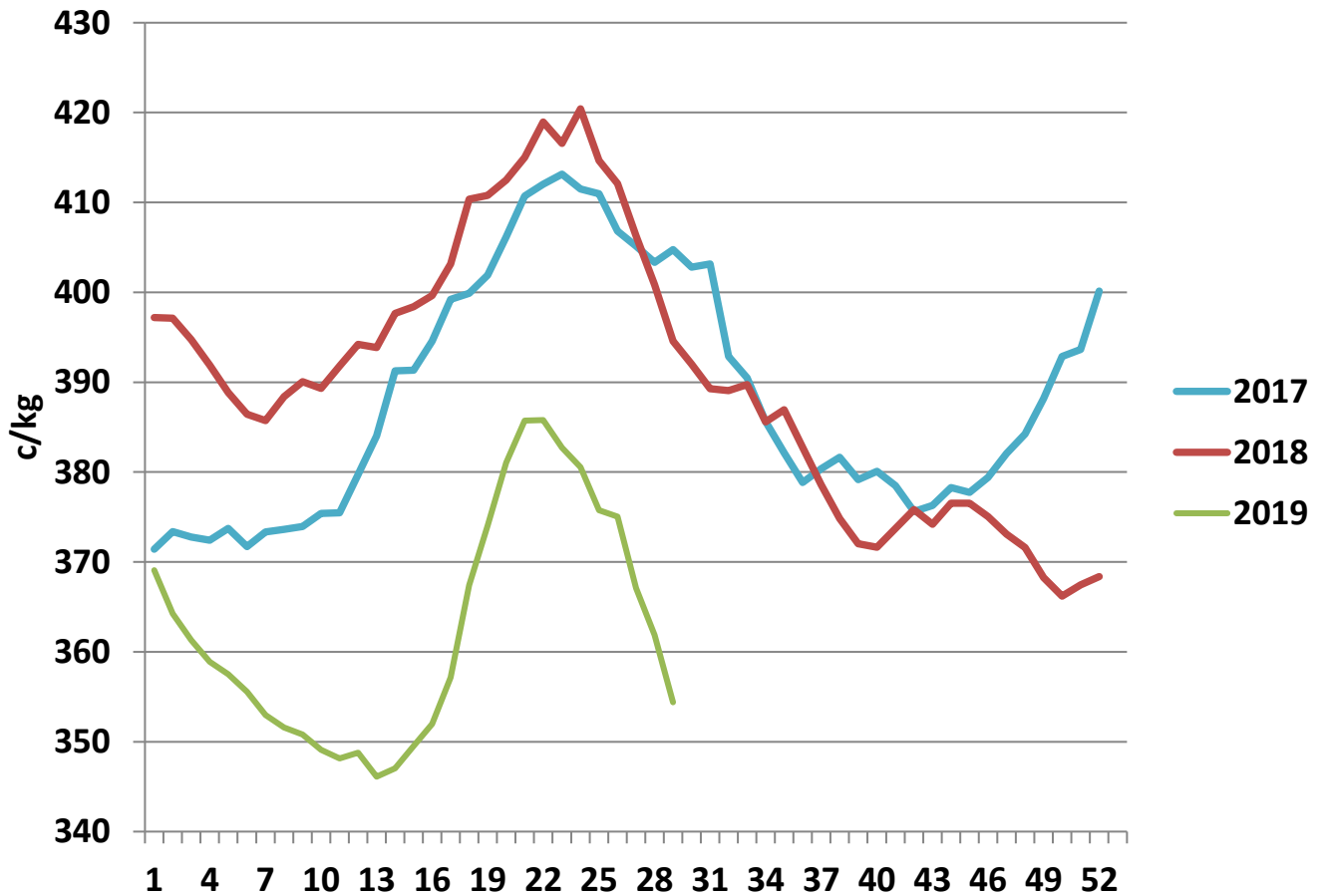
Livestock Pricing

	Ireland	NI	Britain	EU 14 Average	France	Germany
W/C 08/07/19	359.4	367.31	370.4	362.7	371	342.7

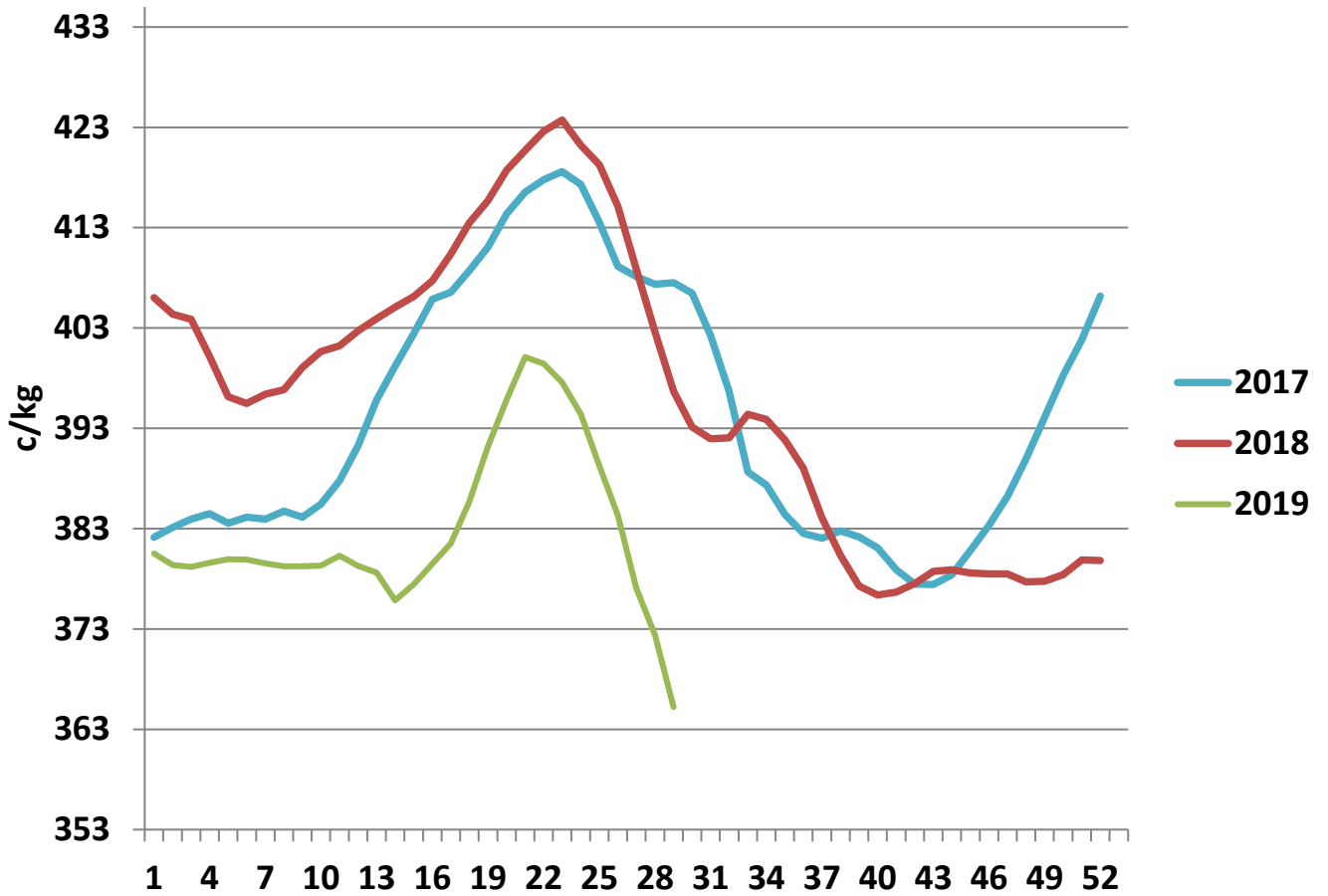
R3 Steer prices ex. VAT



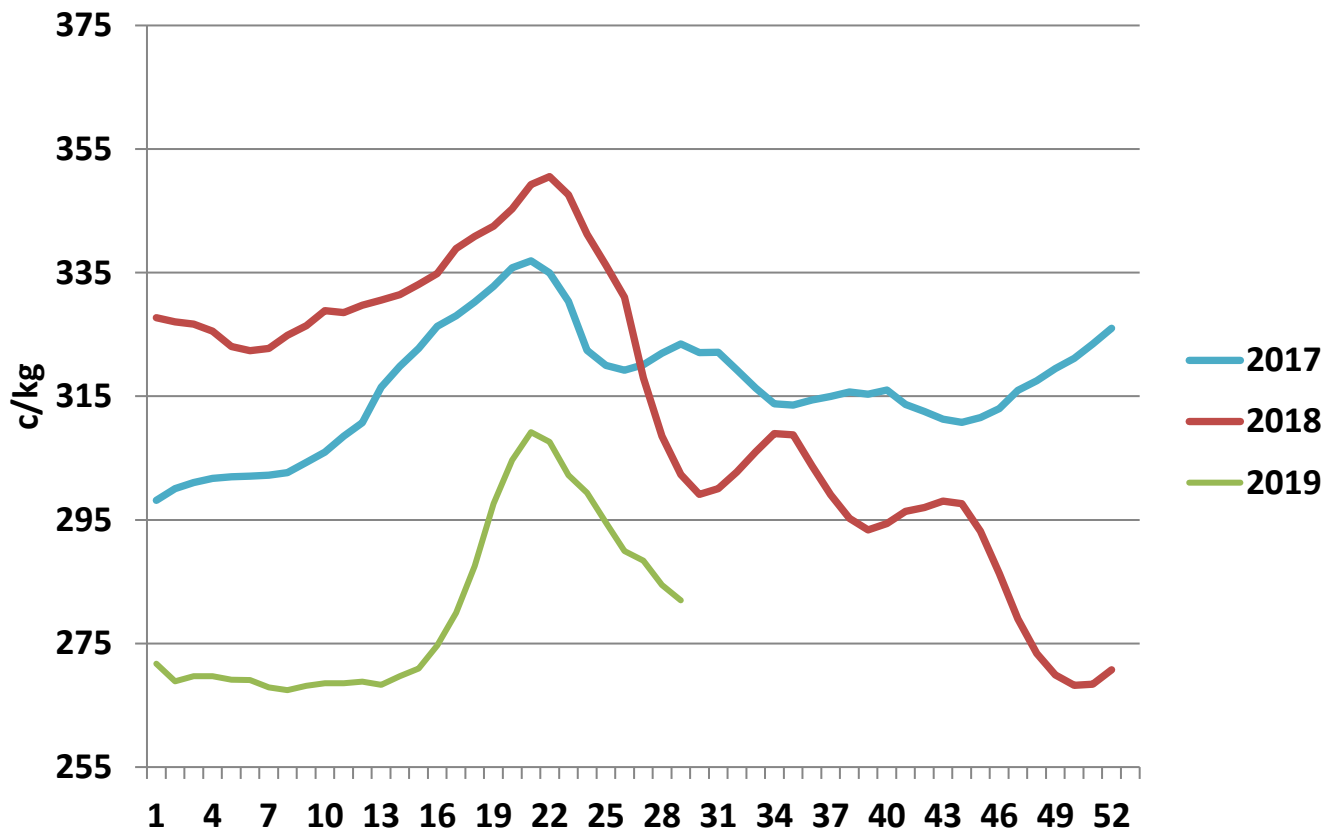
U3 Young Bull prices ex. VAT



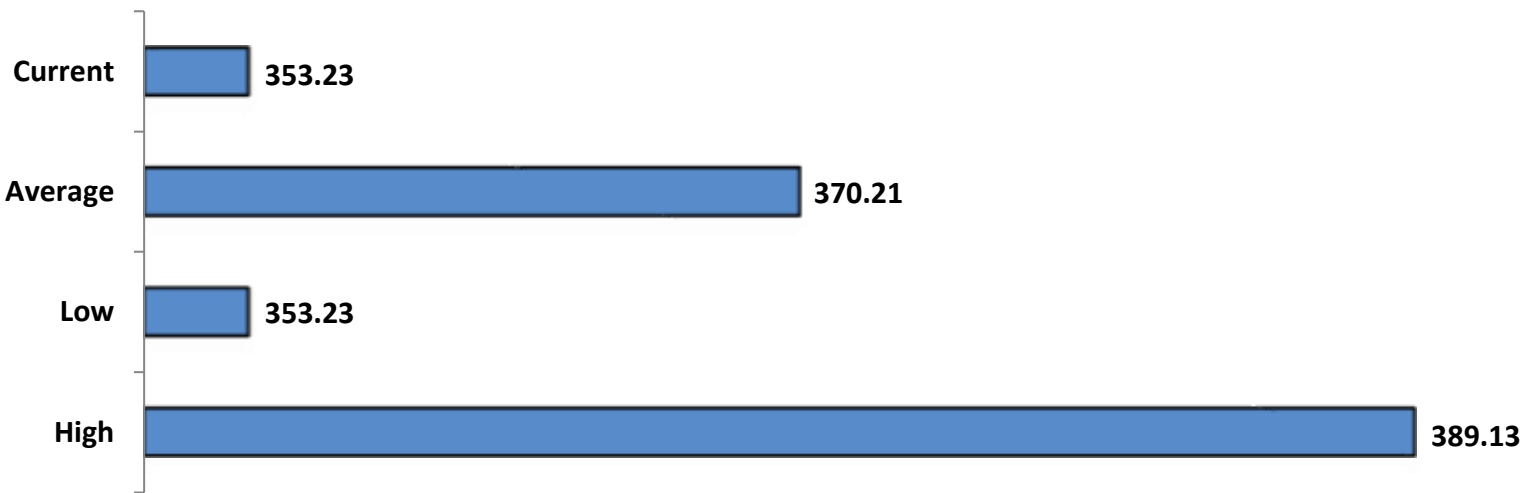
R3 Heifer prices ex. VAT



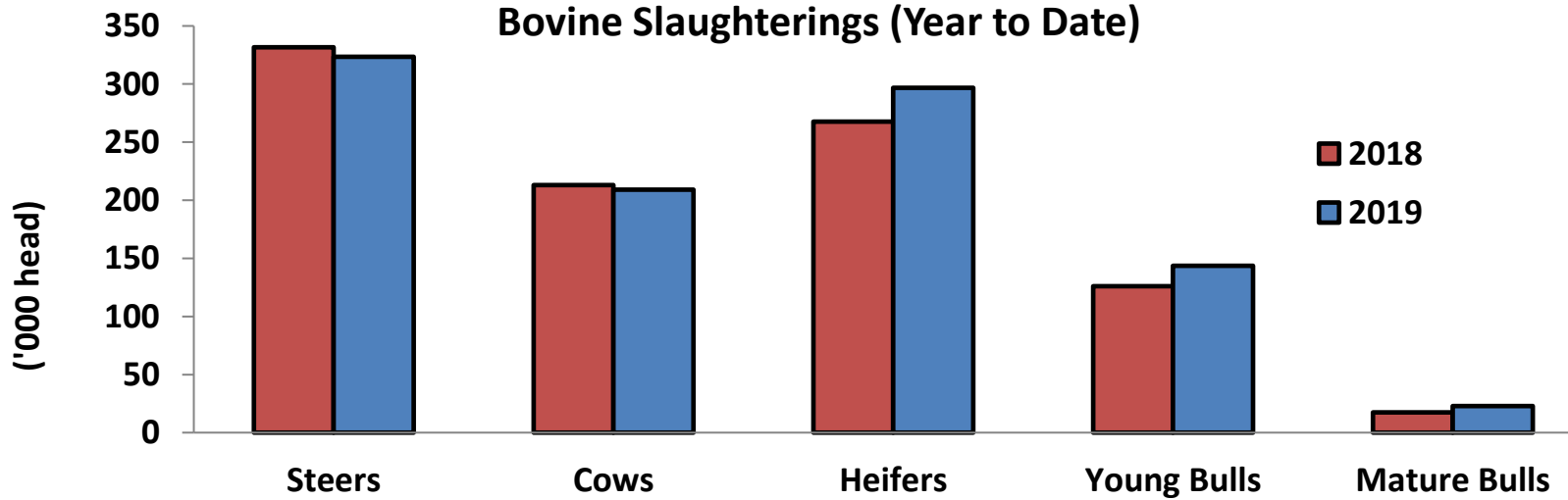
O4 Cow prices ex. VAT



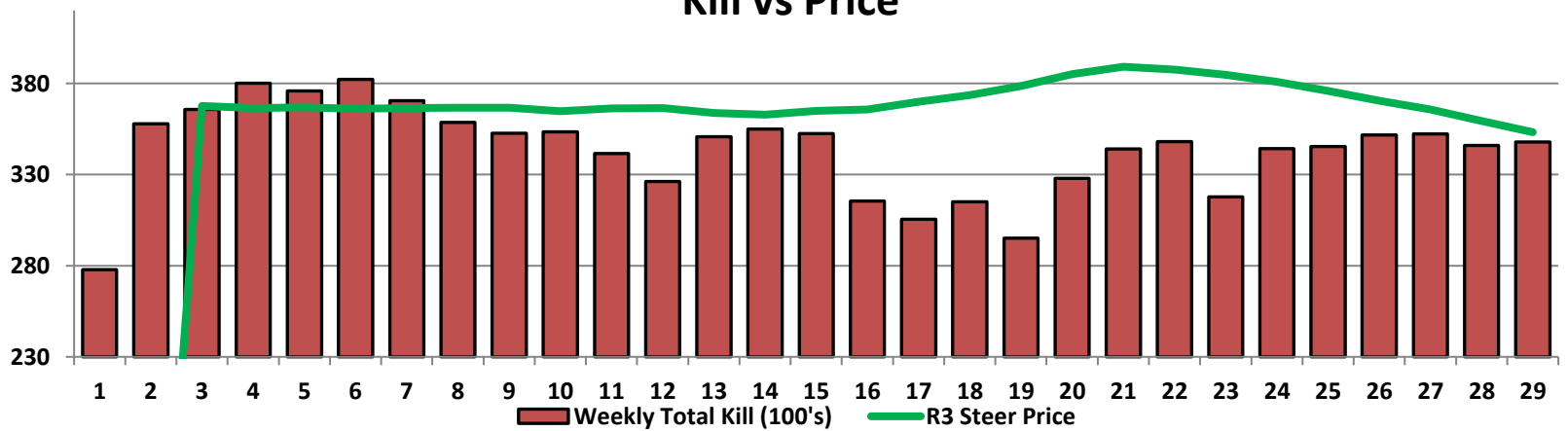
6 Month R3 Steer Statistics



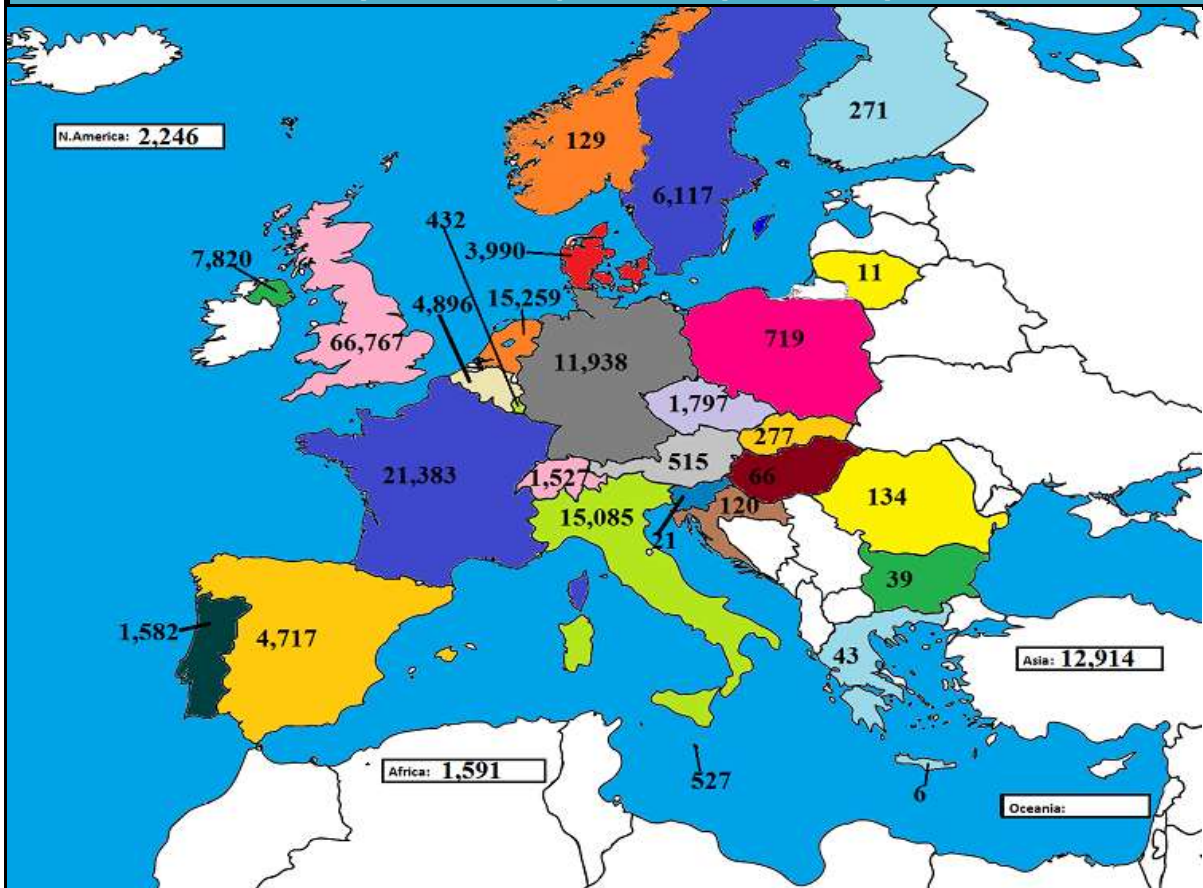
Bovine Slaughterings (Year to Date)



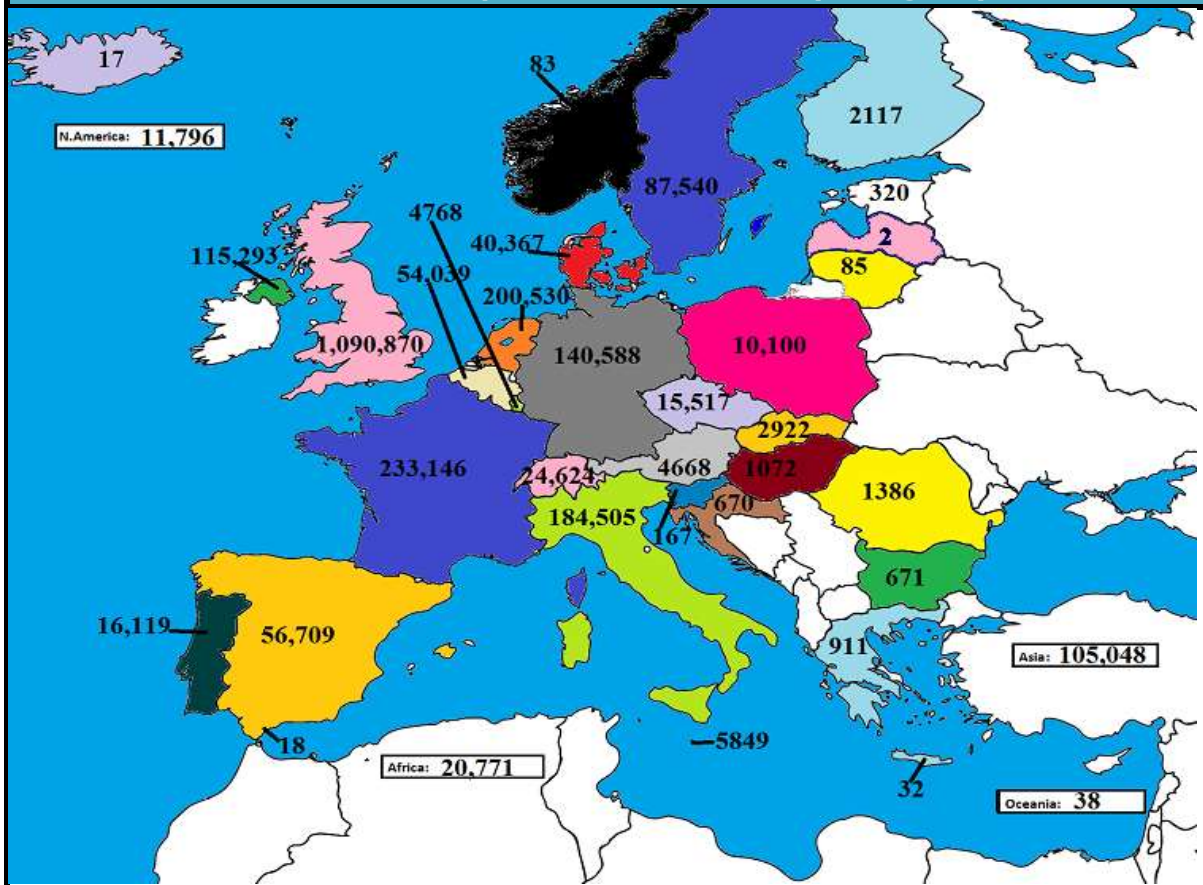
Kill vs Price



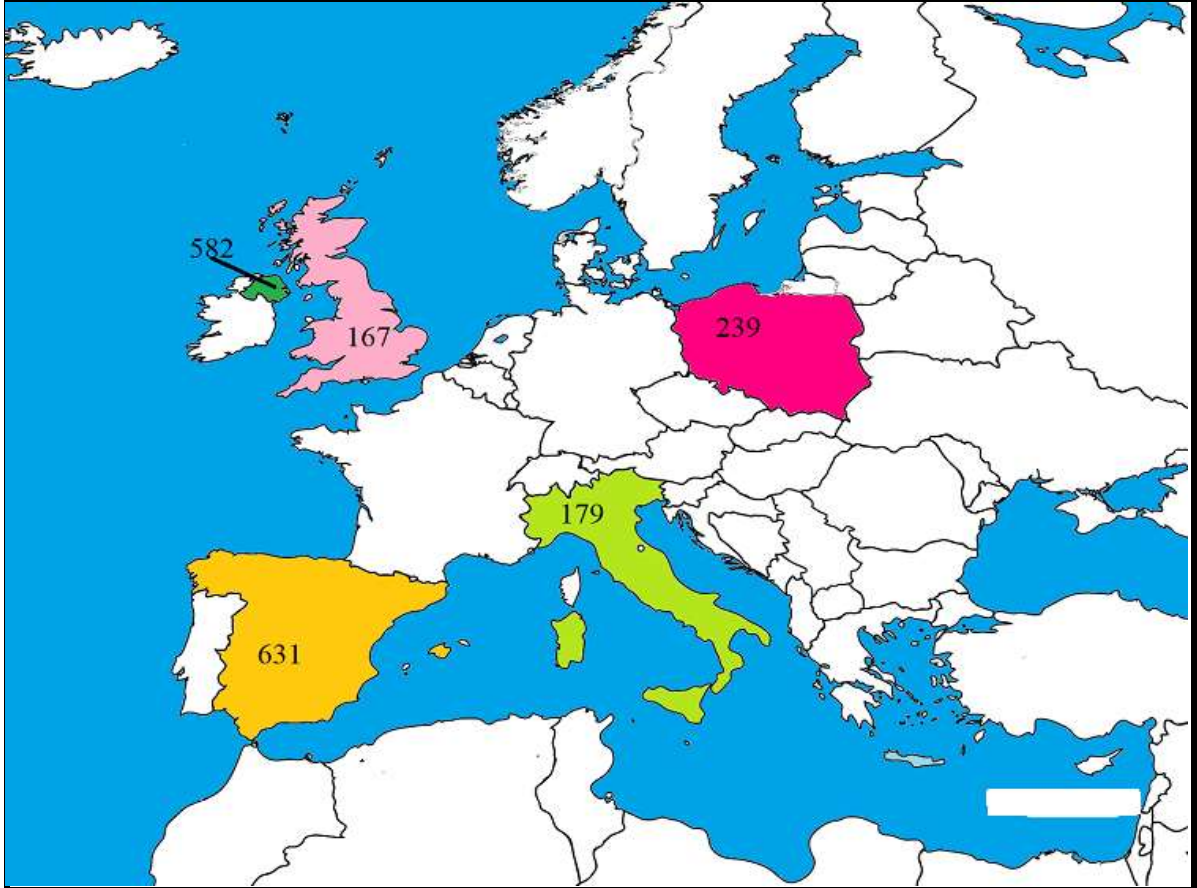
May 2019 Beef exports, €000 (CSO figures)



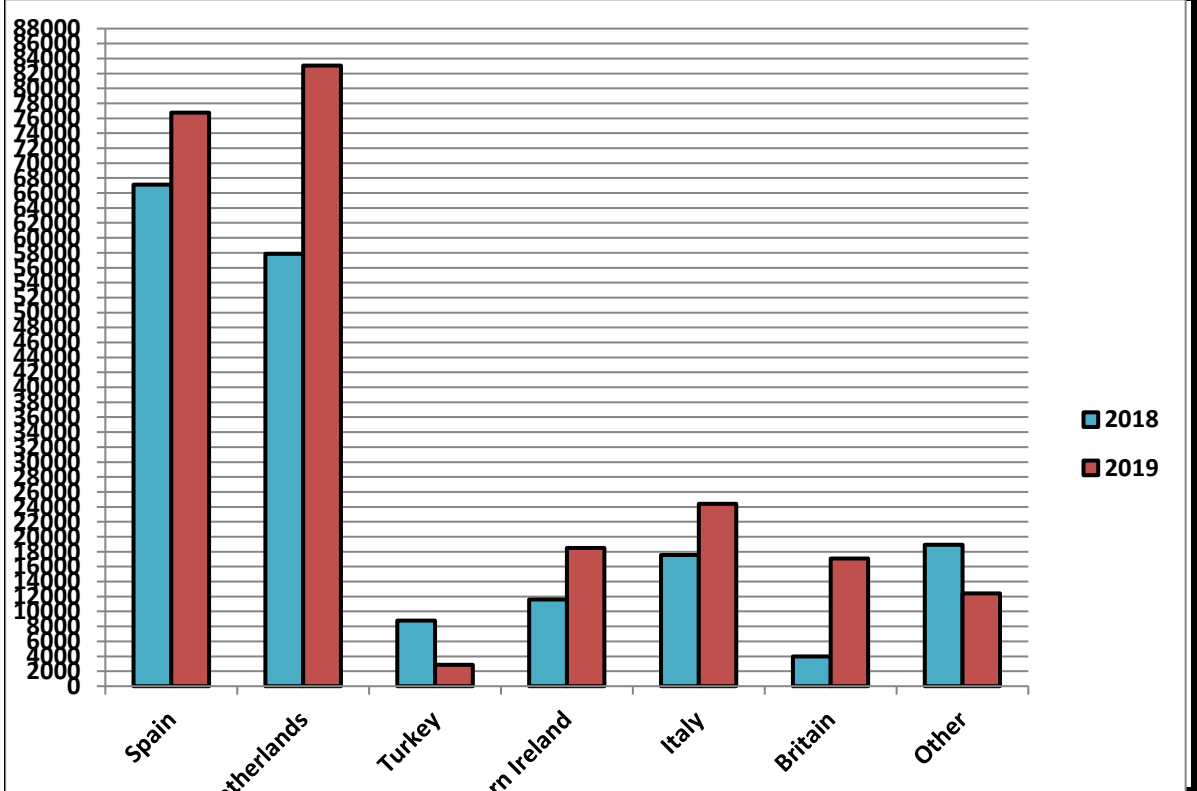
Cumulative beef exports to Dec 2018, €000 (CSO figures)

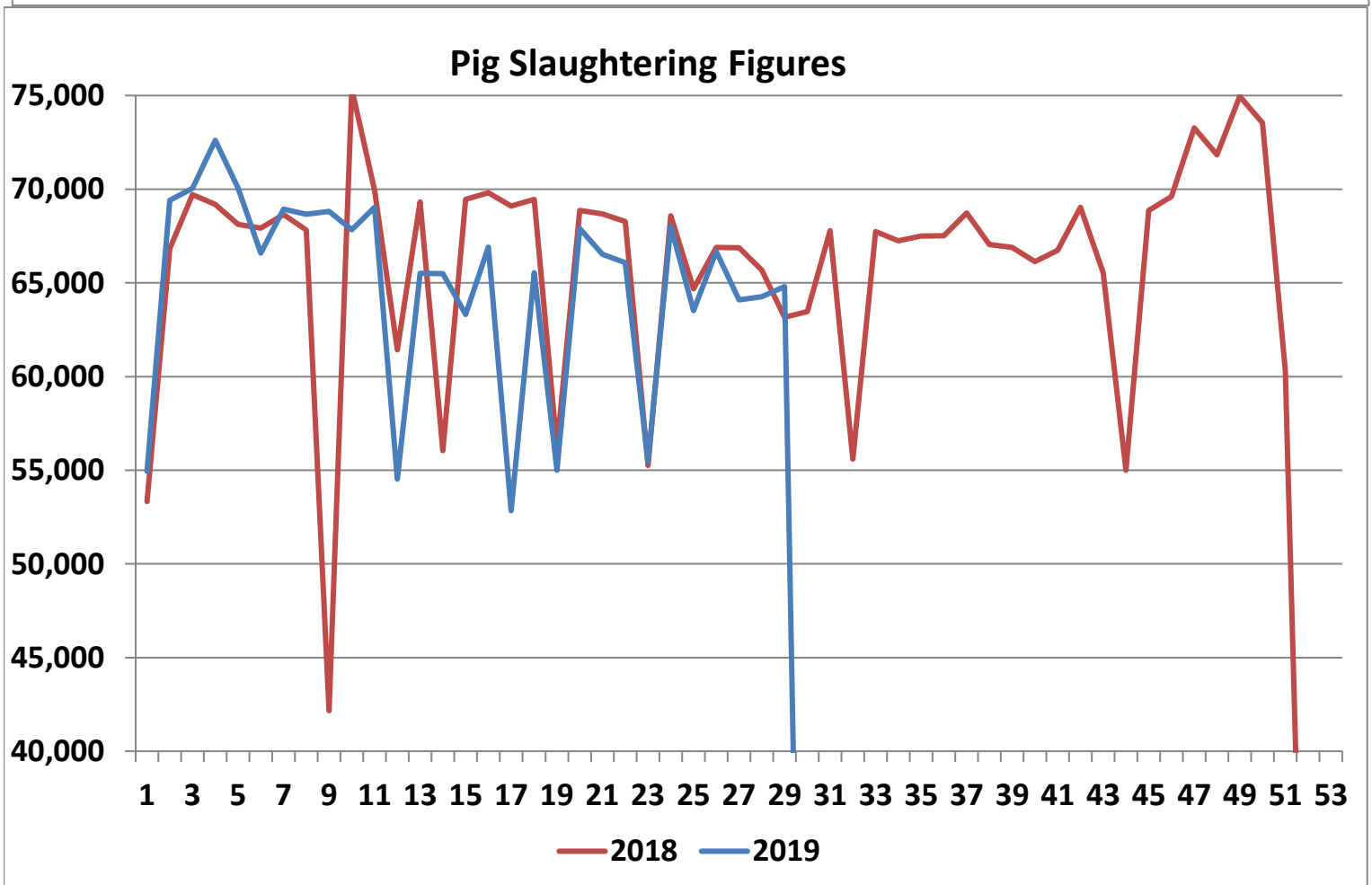
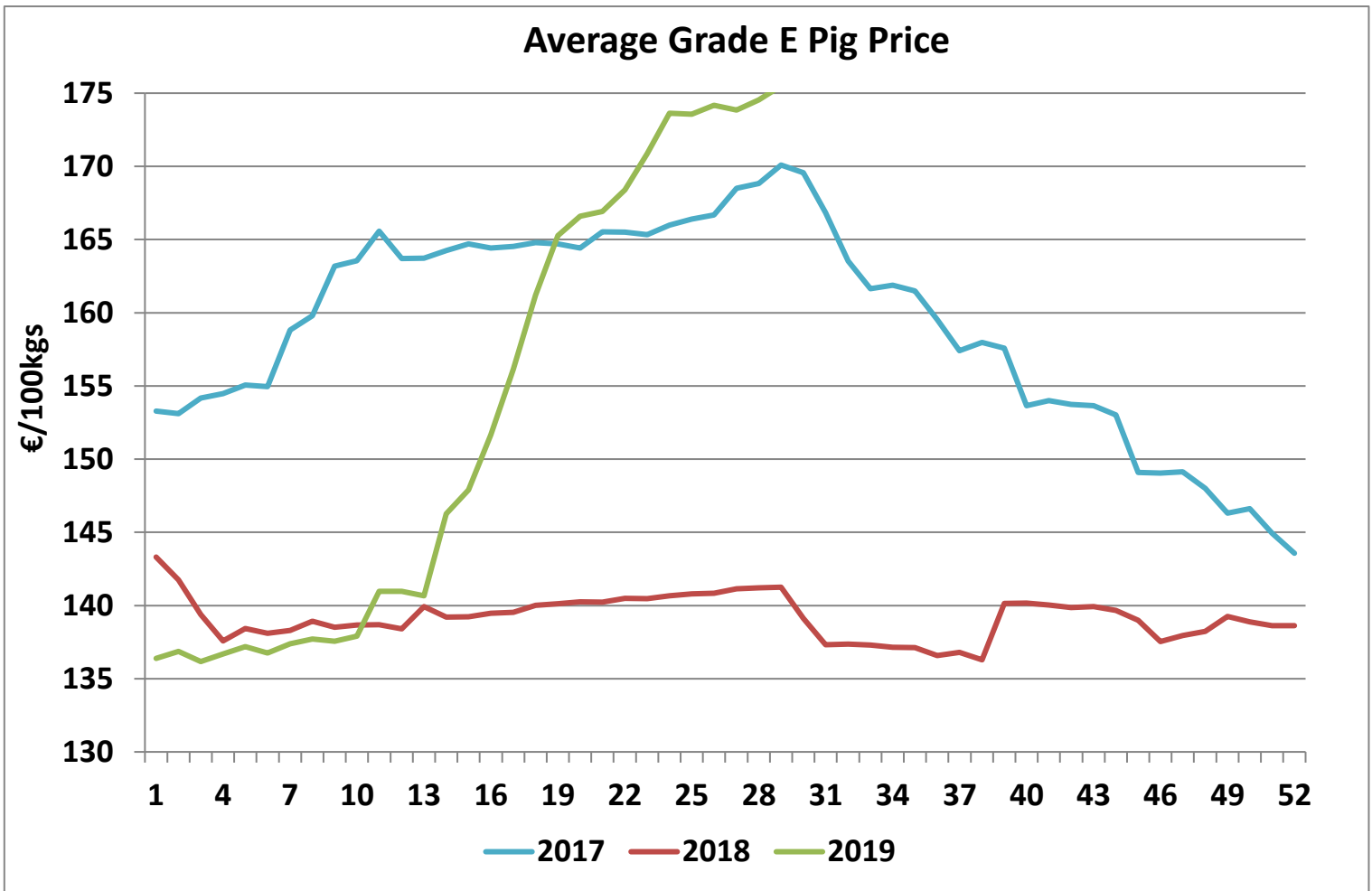


Cattle exported, w/c 15/07/19



Cumulative cattle export figures, 2019





Sheepmeat Information for Week 29

Irish Prices €/100 kg	2019	2018	Change
Ave Factory Price	455.97	466.97	-2.4%
Ave Mart Price	393.64	390.67	0.8%
National Ave Price	437.27	444.08	-1.5%
YTD Ave	488.01	519.59	-6.1%

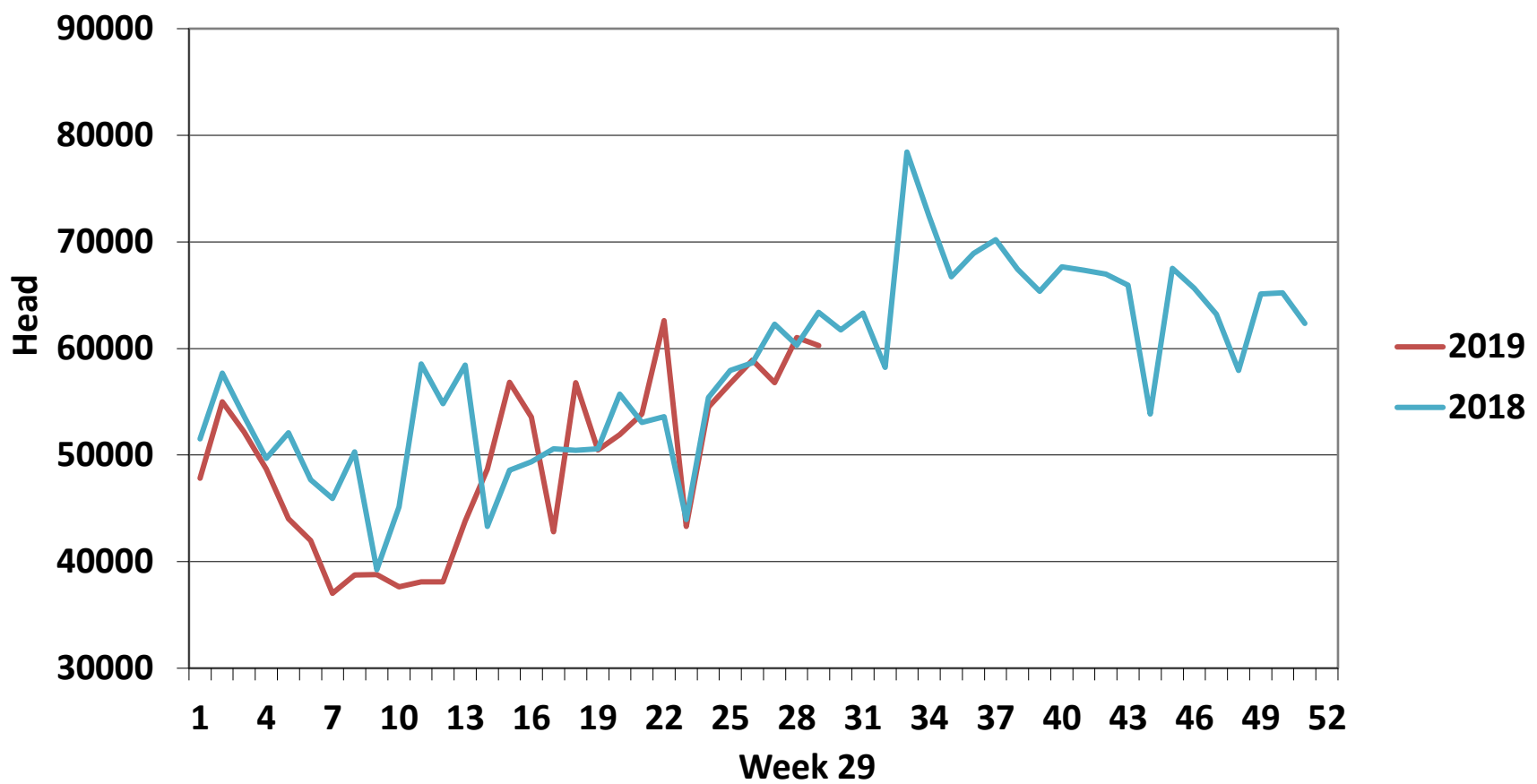
Slaughterings	2019	2018	Change
Weekly	60,260	63,384	-5%
YTD	1,430,860	1,521,868	-6%

EU Market Rates Heavy Lambs	€/100kg	% of Community Price
Belgium	497.7	102%
Denmark	512.7	104%
Germany	494.9	106%
Spain	475.3	97%
France	586.0	120%
Croatia	535.6	100%
Ireland	452.9	91%
Italy	539.0	110%
Cyprus	455.0	92%
Latvia	412.1	86%
Lithuania	432.7	88%
Netherlands	521.1	107%
Austria	549.0	112%
Poland	445.6	91%
Romania	234.9	47%
Finland	358.8	73%
Sweden	499.4	107%
Northern Ireland	416.3	84%
Great Britain	462.0	98%
United Kingdom	458.8	97%
Community	479.5	100%

**REPORT ON SLAUGHTERING AT SHEEP EXPORT PREMISES
WEEK 29**

CATEGORY	2019		2018		DIFFERENCE	
	Weekly	Cumulative	Weekly	Cumulative	Weekly	Cumulative
Lambs/Hoggets	622	736,451	287	827,155	335	90,704
Spring Lambs	51,646	488,841	49,914	441,860	1,732	46,981
Ewes and Rams	7,958	205,376	13,183	252,728	5,225	47,352
Light Lambs	34	192	-	125	34	67
TOTAL	60,260	1,430,860	63,384	1,521,868	-3,124	-91,008

Weekly Sheep Slaughtering



Ave. Price €/100 kg for Sheepmeat

