

# Meat Market Report

22/07/19 - 28/07/19

Week

30



**An Roinn Talmhaíochta,  
Bia agus Mara**

Department of Agriculture,  
Food and the Marine

# MARKET SUMMARY

## Beef

### Deadweight Prices c/100Kg (Including VAT)

	U3	U4	R3	R4	O3	O4	P+
Steers	376.9	374.3	367.4	367.9	349.9	351.3	325.0
Heifers	393.2	393.4	379.9	377.9	361.2	361.0	327.7
Young Bulls	368.5	365.9	354.1	355.6	331.5	341.1	312.4
Cows			314.5	311.8	295.0	295.7	286.6

### Liveweight Prices

*Bull Calf Average Price	€189.2 per head (Excluding VAT)
**Young Store Average Price	€198.0 per 100kg (Excluding VAT)
***Yearling (male & female) Price	€183.0 per 100kg (Excluding VAT)

\* Aged 8-28 days \*\* Aged 180-364 days, Male & Female \*\*\*age 365-730 days

### Slaughterings

34,967 cattle slaughtered this week, of which steers were 13,678 (39%), heifers 9,331 (27%), young bulls 3,640 (10%) and cows 7,583 (22%). Total YTD slaughter is 1,030,637 compared to 991,100 in 2018, a 4% increase.

### Live Trade

2,279 cattle were exported in the week commencing 22/07/2019\*; 1,783 to EU (Except NI). Live exports for 2019 amount to 235,278 compared to 189,927 in 2018, up 24% on 2018 levels.

\*This data is provisional and subject to revision.

The next meeting of the Management Committee for the Common Organisation of Agricultural Markets (Animal Products Sector) is 29th August 2019

### CONTENTS:

Page 2: Market Summary Beef

Page 3: Market Summary Other Meats

Page 4: Beef Price and Slaughter Summary

Page 5: Comparative Beef Prices

Page 6: Steer and Young Bull Price

Page 7: Heifer and Cow Graphs

Page 8: Price and Slaughter Graphs

Page 9: Liveweight Beef Graphs

Page 10: Beef Export Maps

Page 11: Beef Export Info

Page 12: Pig price and slaughter graphs

Page 13: Sheep prices and slaughter

Page 15: Sheep price and slaughter graphs

# MARKET SUMMARY

## Pigmeat

Grade E Pig  
Prices (Ex.  
VAT)

The Grade E Pig price for week commencing 22/07/2019 was €170.58 per 100Kg compared to €139.12 in the same week last year, which represents a 23% increase.

Slaughtering

65,915 pigs were slaughtered in week 30 of which 706 were sows. The cumulative figure for pig slaughterings in 2019 is 1,949,332 which is a 1% decrease with the same point last year.

## Sheepmeat

Sheepmeat  
Prices (Ex.  
VAT)

The national average price for the week commencing 22/07/2019 was €432.39 per 100Kg, a decrease of 2.8% over the same week last year.

Slaughtering

60,761 sheep were slaughtered at sheep export premises the week commencing 22/07/2019, compared to 61,755 in the same week of 2018. Sheep slaughterings for 2019 are 6% down on 2018 at 1,491,621 head.

Live Trade

Total live exports to European Countries stood at 20,769 head to the end of 2018.

## Poultry

Slaughtering

Cumulative poultry slaughterings for 2019\* stand at 58,887,016 birds at the end of week 29, up 8% compared to the same period last year.

\*Latest Figures are provisional and subject to change

Dead Weight Prices	W/C	W/C	Same week 2018	% change prev week	% change 2018
	22/07/19	15/07/19			
Steers (R3) (c/kg)	348.6	353.2	382.4	-1.3%	-8.8%
Heifers (R3) (c/kg)	360.4	365.2	393.1	-1.3%	-8.3%
Young Bulls (U3) (c/kg)	349.7	354.4	392.0	-1.3%	-10.8%
Cows (04) (c/kg)	280.6	282.0	299.1	-0.5%	-6.2%

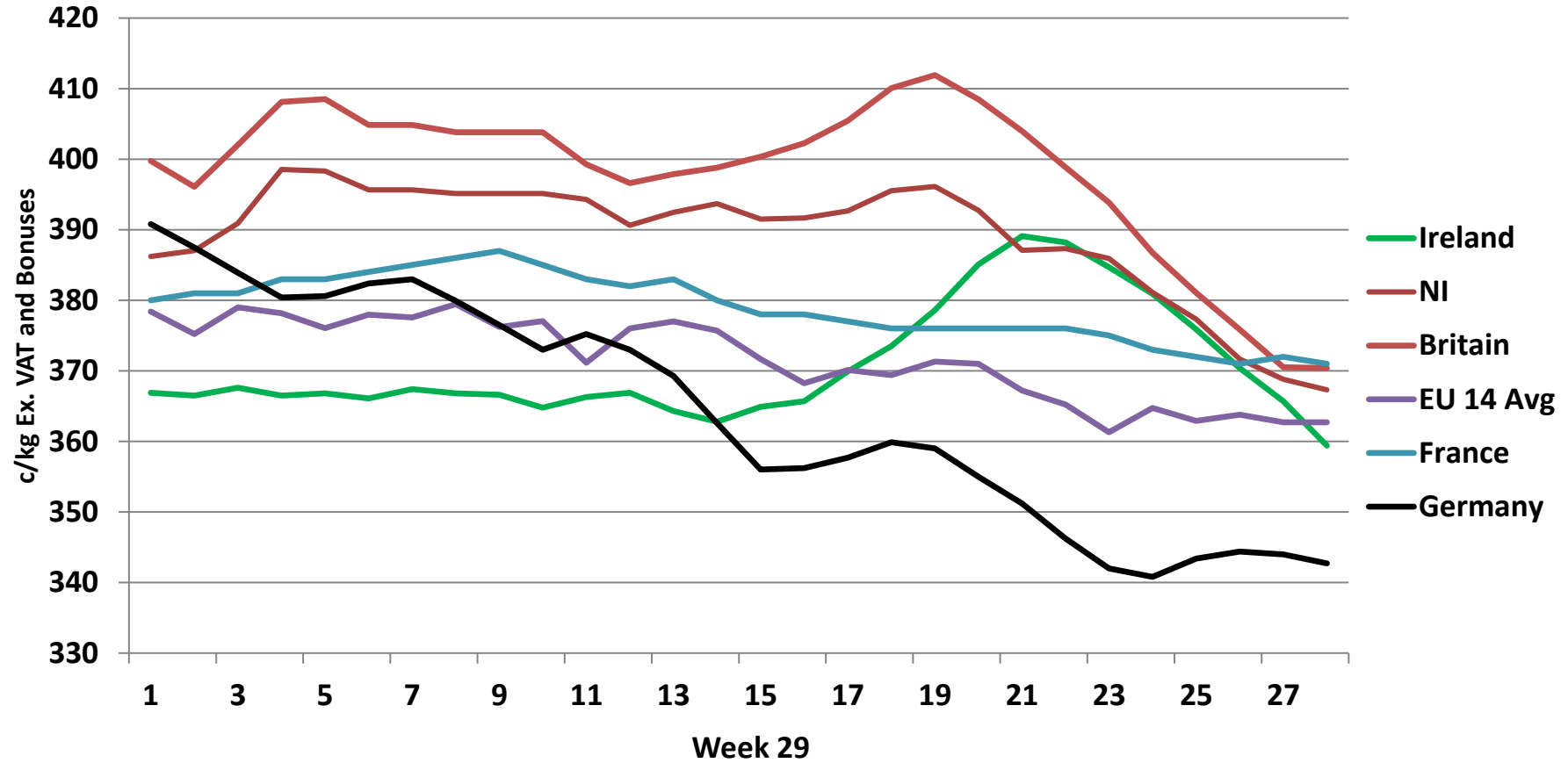
Live Weight Prices	W/C	W/C	Same week 2018	% change previous week	% change 2018
	22/07/19	15/07/19			
Yearlings (Male) (Aged 365 - 730 days) - (€/100Kg)	178	183	181	-2.7%	-1.7%
Yearlings (Female) (Aged 365 - 730 days) - (€/100Kg)	188	190	186	-1.1%	1.1%
Young Stores (Male & Female) (Aged 180 - 364 days) - (€/100Kg)	198	204	213	-2.9%	-7.0%
Bull Calf (€/head) Dairy	148.5	143.1	150.3	3.8%	-1.2%
Bull Calf (€/head) Beef	229.9	222.8	206.8	3.2%	11.2%
Bull Calf (€/head) Average	189.2	183.0	178.5	3.4%	6.0%

Slaughter Figures	% of weekly figures	W/C	Same week 2018	Year to Date		Change 2019 v 2018	
		22-Jul-19		2019	2018	Head	%
Steers	39.1%	13,678	12,094	337,171	345,949	-8,778	-2.5%
Cows	21.7%	7,583	8,309	216,697	221,276	-4,579	-2.1%
Heifers	26.7%	9,331	8,847	305,959	276,381	29,578	10.7%
Young Bulls	10.4%	3,640	2,962	147,349	129,355	17,994	13.9%
Mature Bulls	2.1%	735	672	23,461	18,139	5,322	29.3%
<b>Total</b>	<b>100%</b>	<b>34,967</b>	<b>32,884</b>	<b>1,030,637</b>	<b>991,100</b>	<b>39,537</b>	<b>4.0%</b>

821

Live Exports	W/C	Same week 2018	W/C	Year to Date		Change 2019 v 2018	
	22-Jul-19		15-Jul-19	2019	2018	Head	%
Northern Ireland	496	306	582	19,131	9,845	9,286	94%
EU Except NI	1,783	1,439	1,216	208,248	165,973	42,275	25%
Third Countries	0	407	0	7,899	14,109	-6,210	-
<b>Total</b>	<b>2,279</b>	<b>2,152</b>	<b>1,798</b>	<b>235,278</b>	<b>189,927</b>	<b>45,351</b>	<b>24%</b>
<b>Calves YTD:</b>	<b>189,675</b>			<b>Adult YTD:Cattle</b>	<b>45,474</b>		

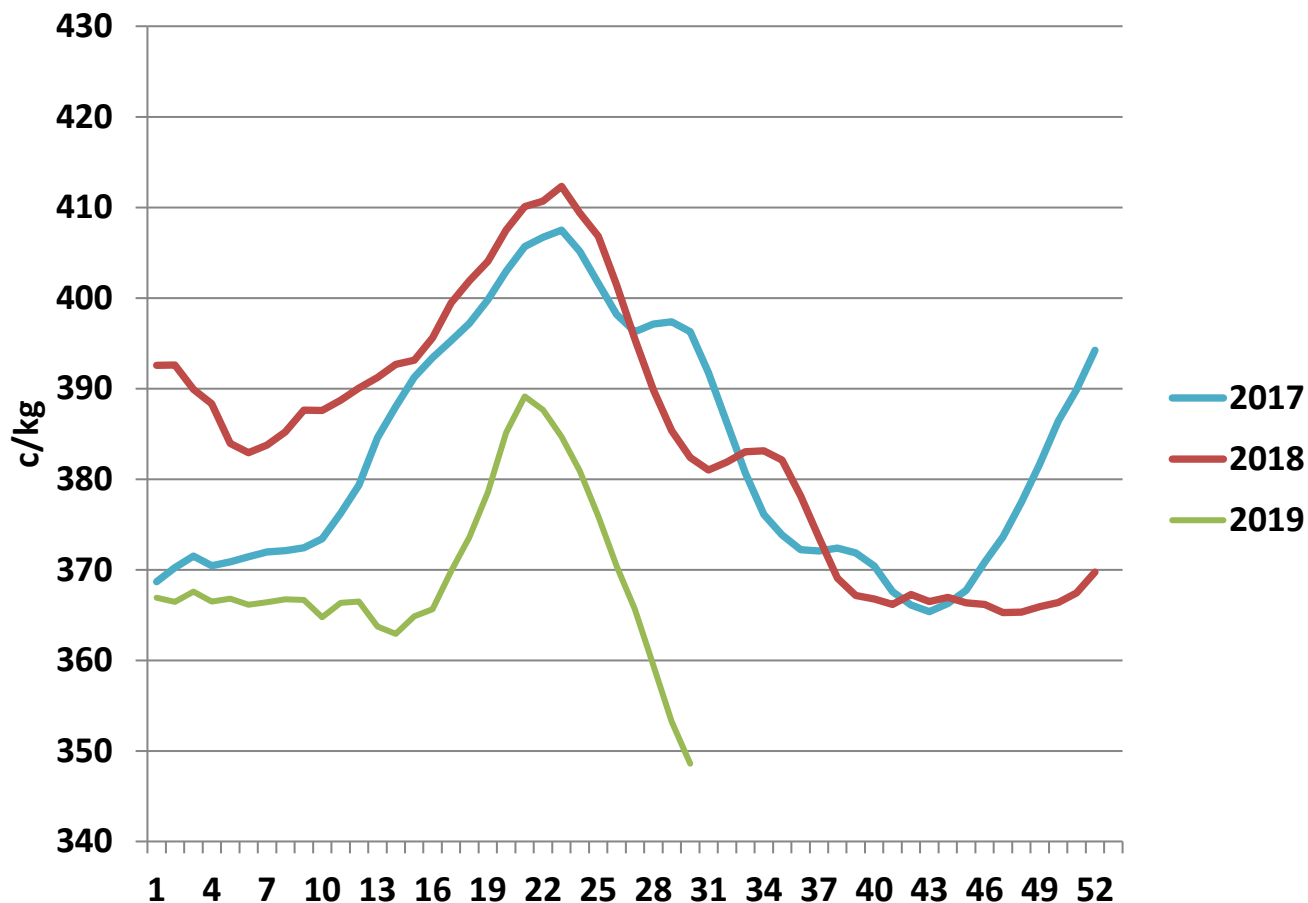
## Irish Deadweight Cattle Prices vs Selected Other Markets, 2019



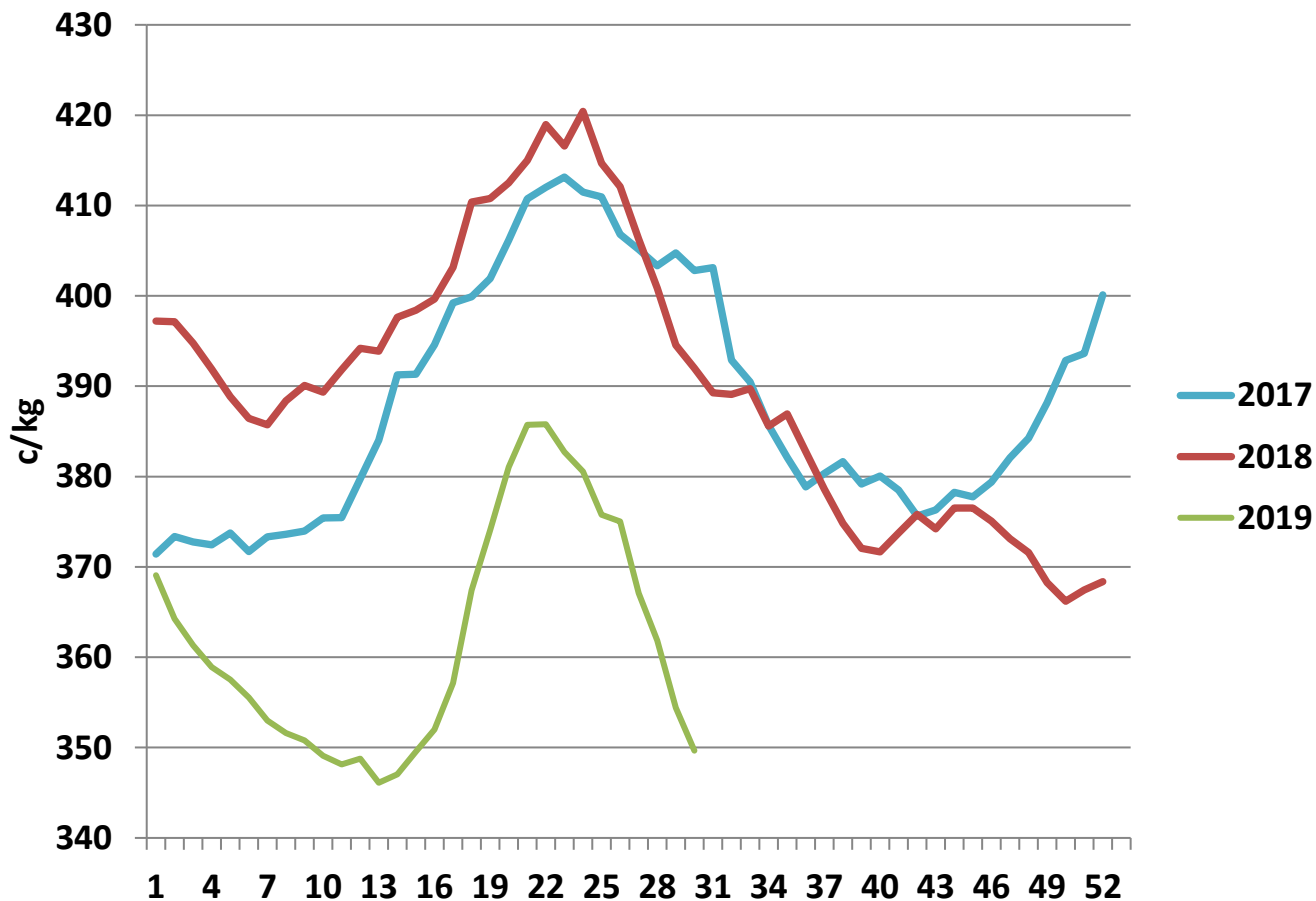
### Livestock Pricing

	Ireland	NI	Britain	EU 14 Average	France	Germany
W/C 15/07/19	353.2	368.25	370.15	362.8	370	340.5

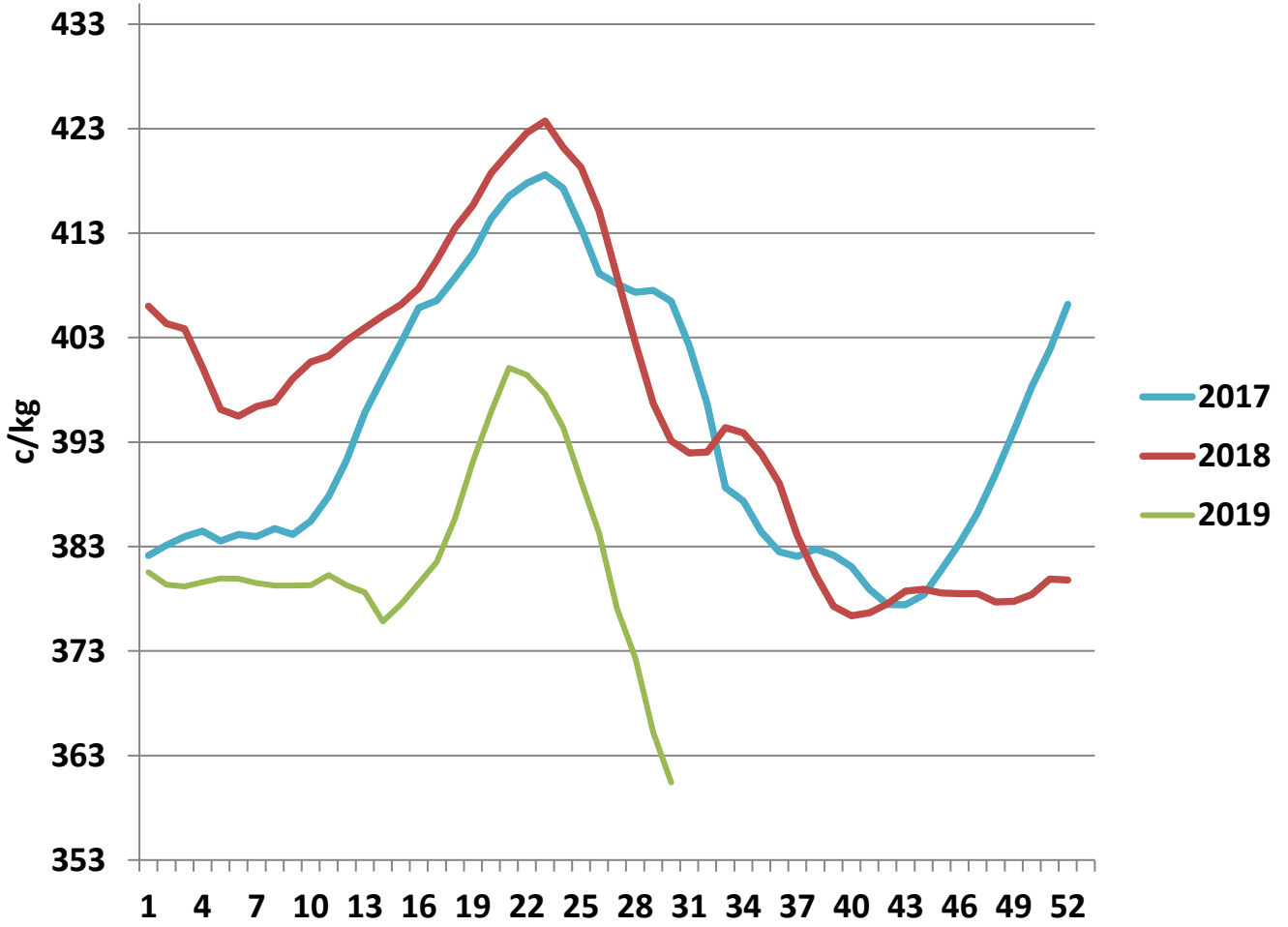
### R3 Steer prices ex. VAT



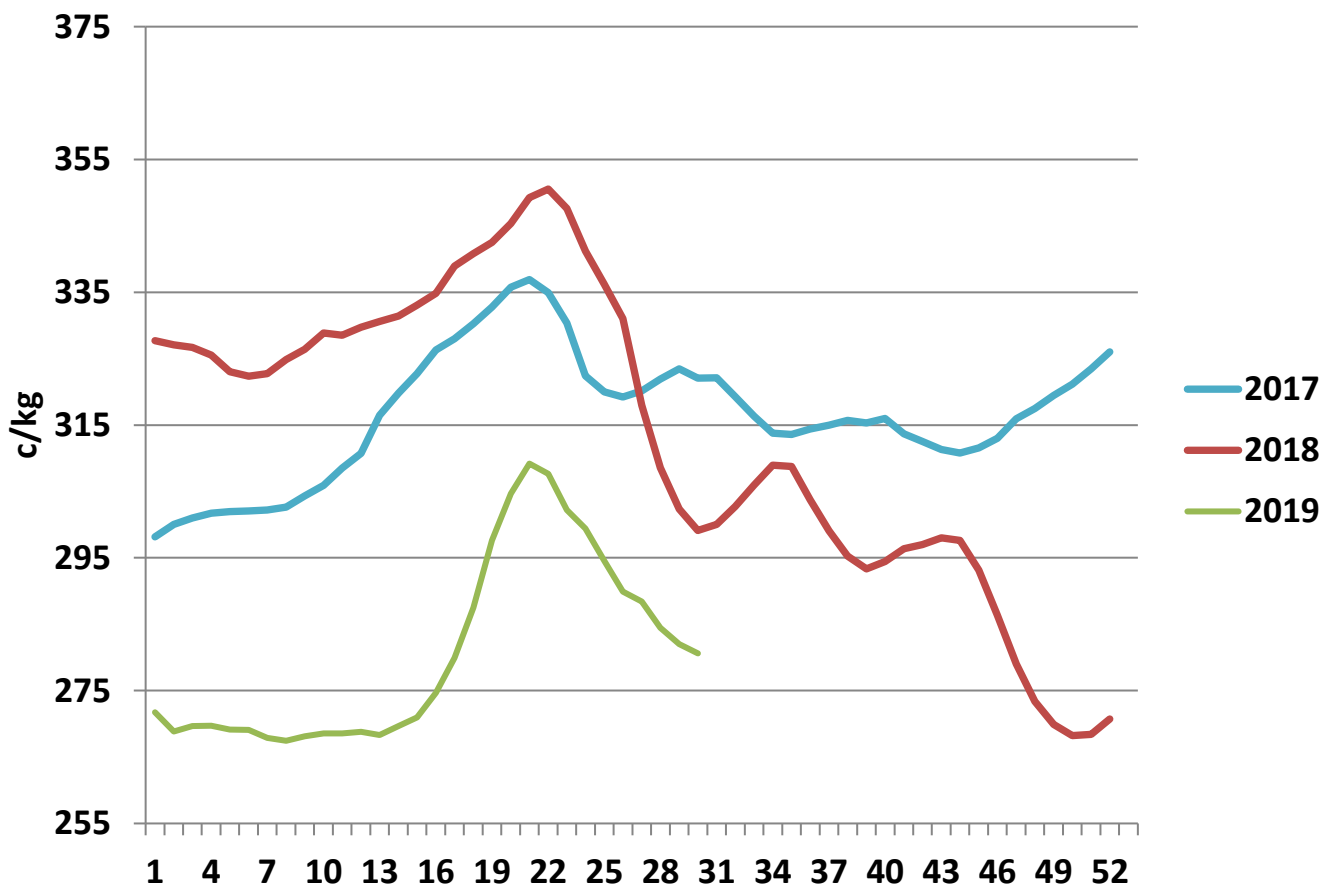
### U3 Young Bull prices ex. VAT

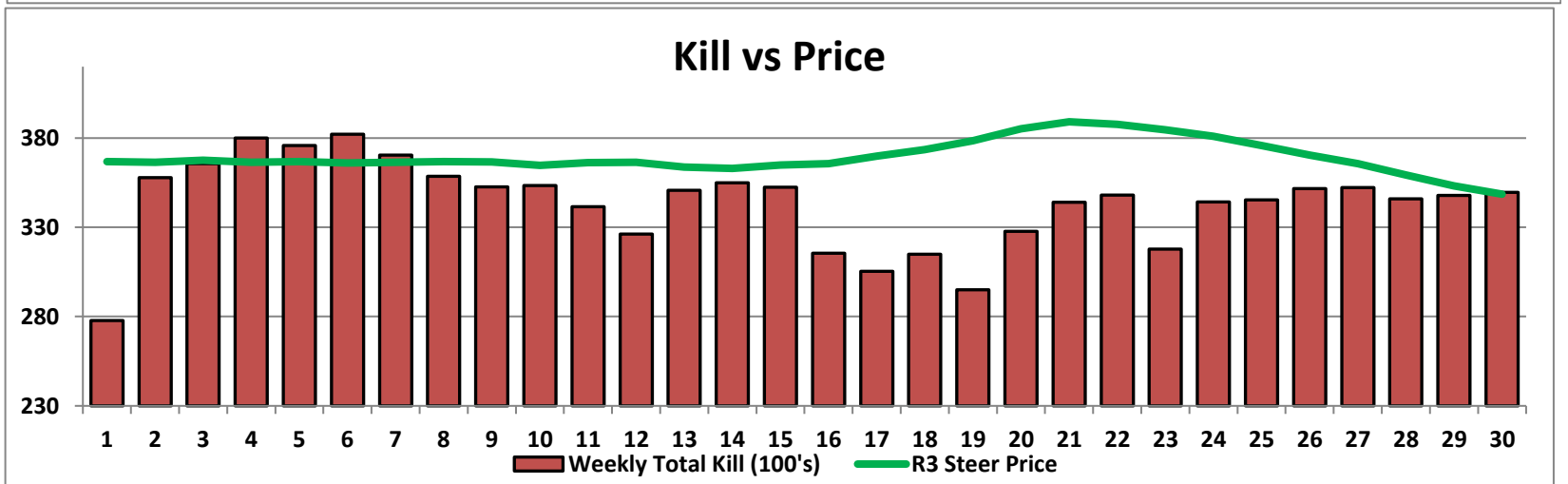
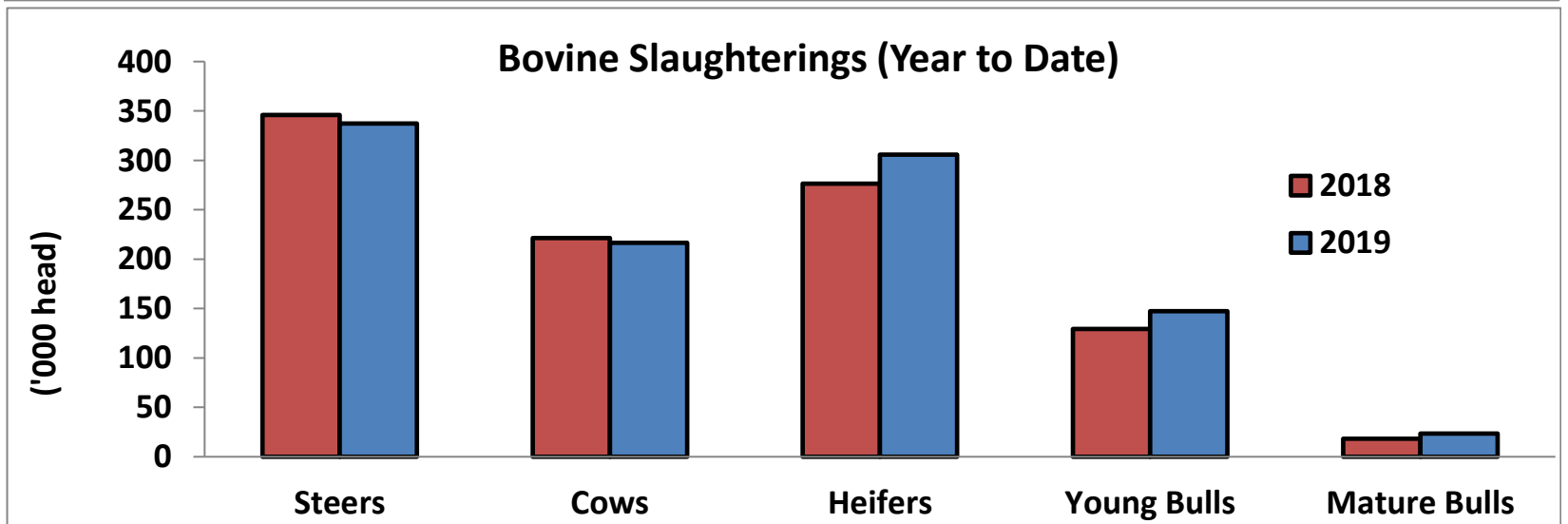
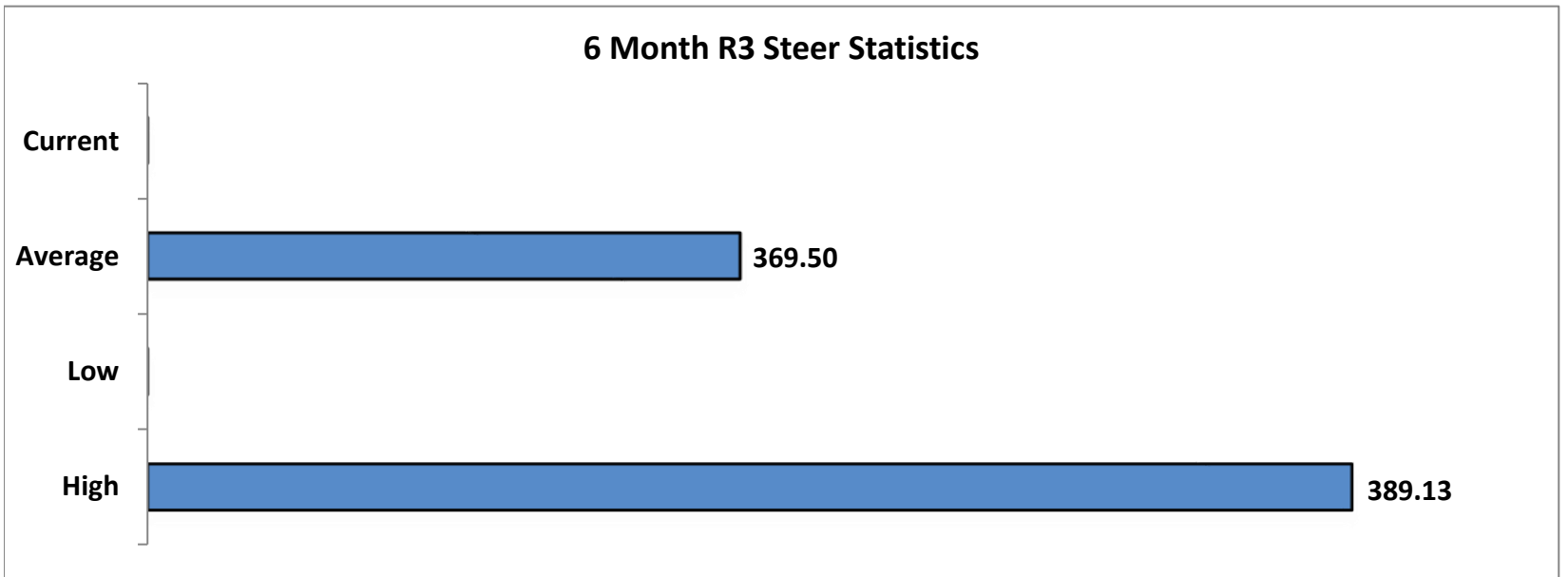


### R3 Heifer prices ex. VAT



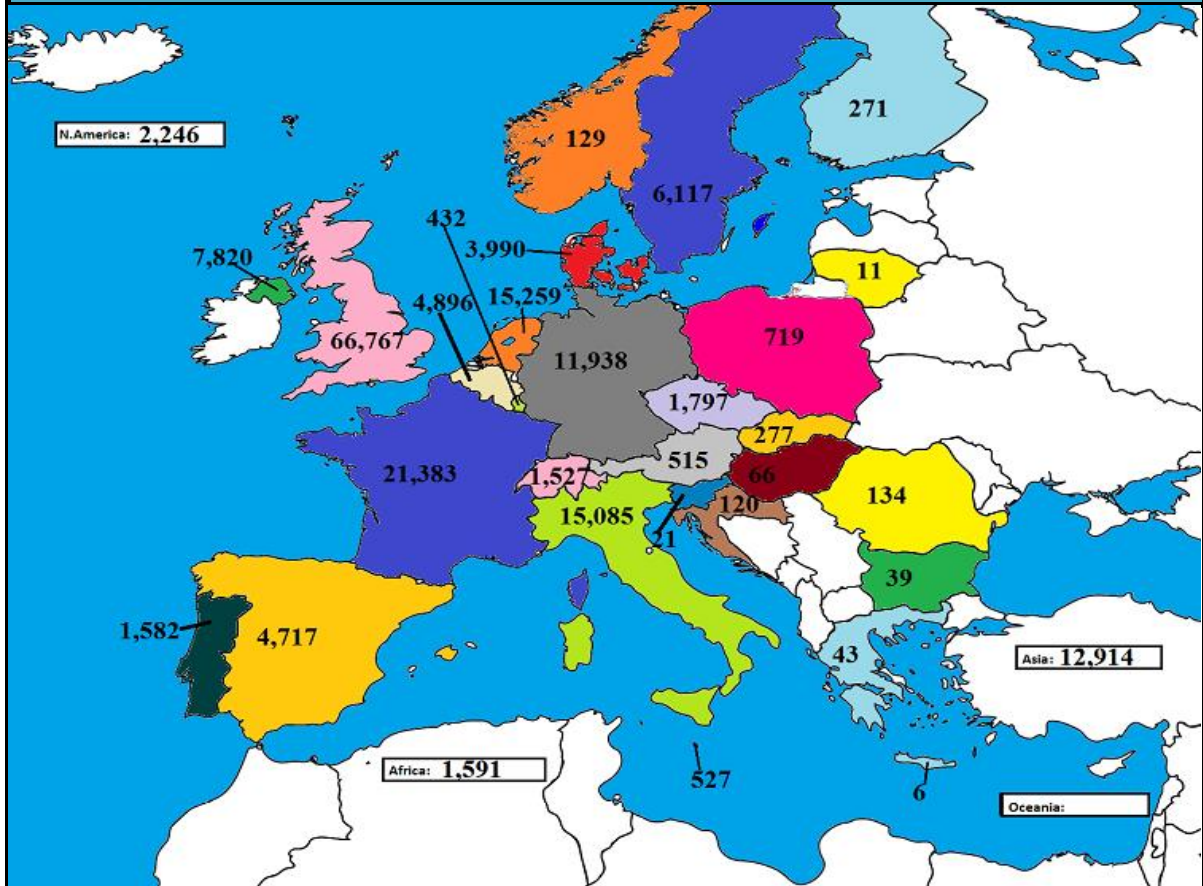
### O4 Cow prices ex. VAT



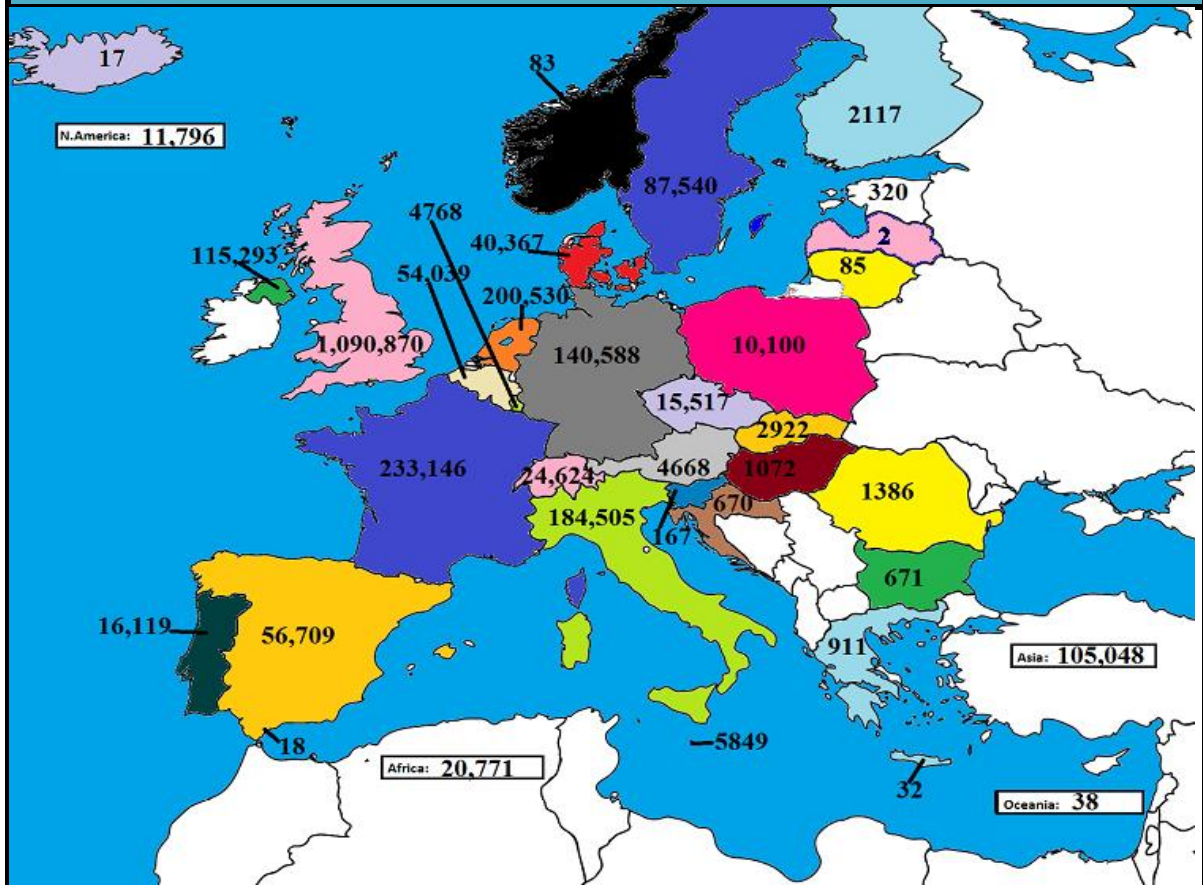




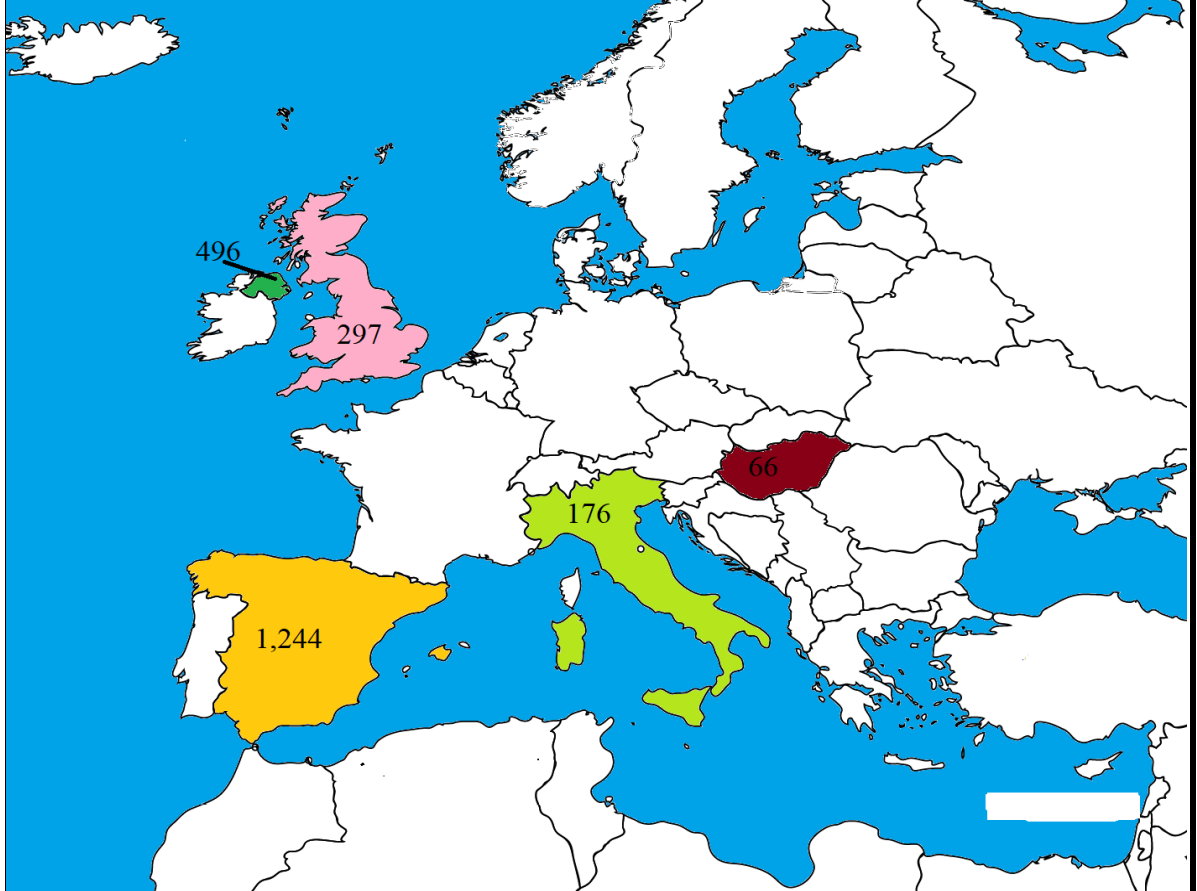
May 2019 Beef exports, €000 (CSO figures)



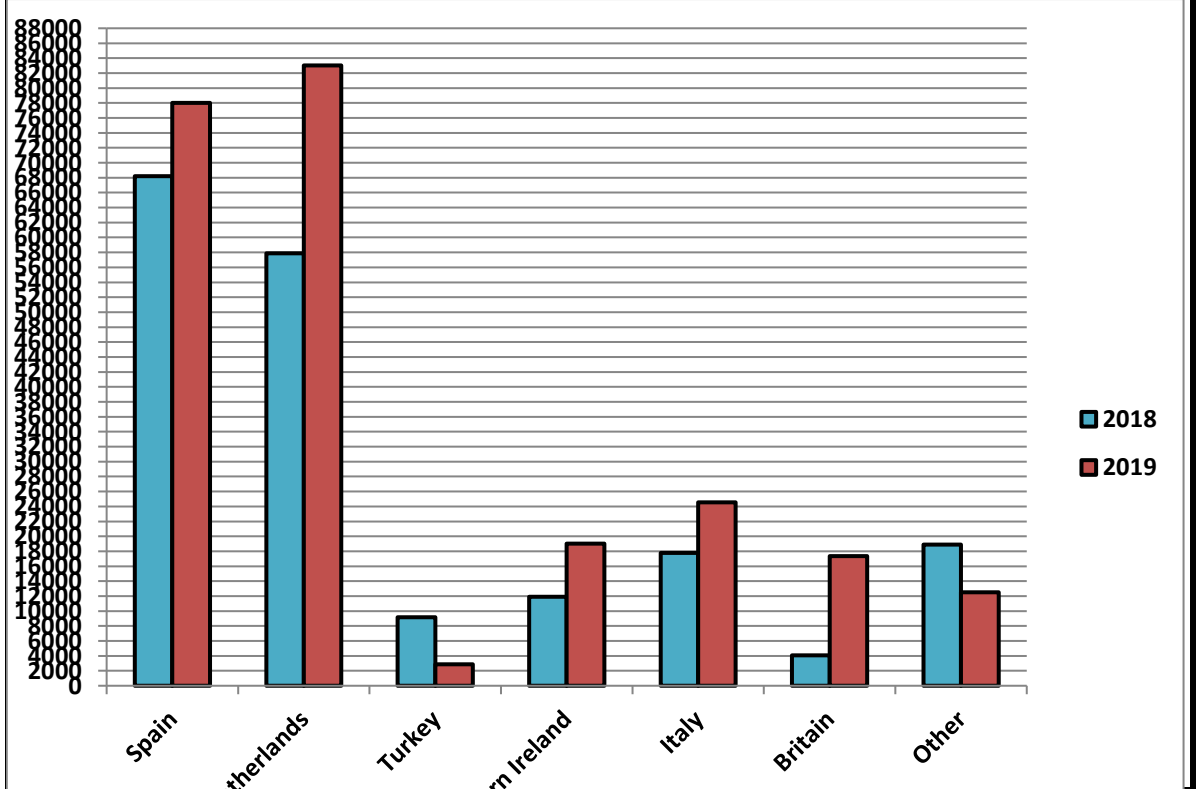
Cumulative beef exports to Dec 2018, €000 (CSO figures)



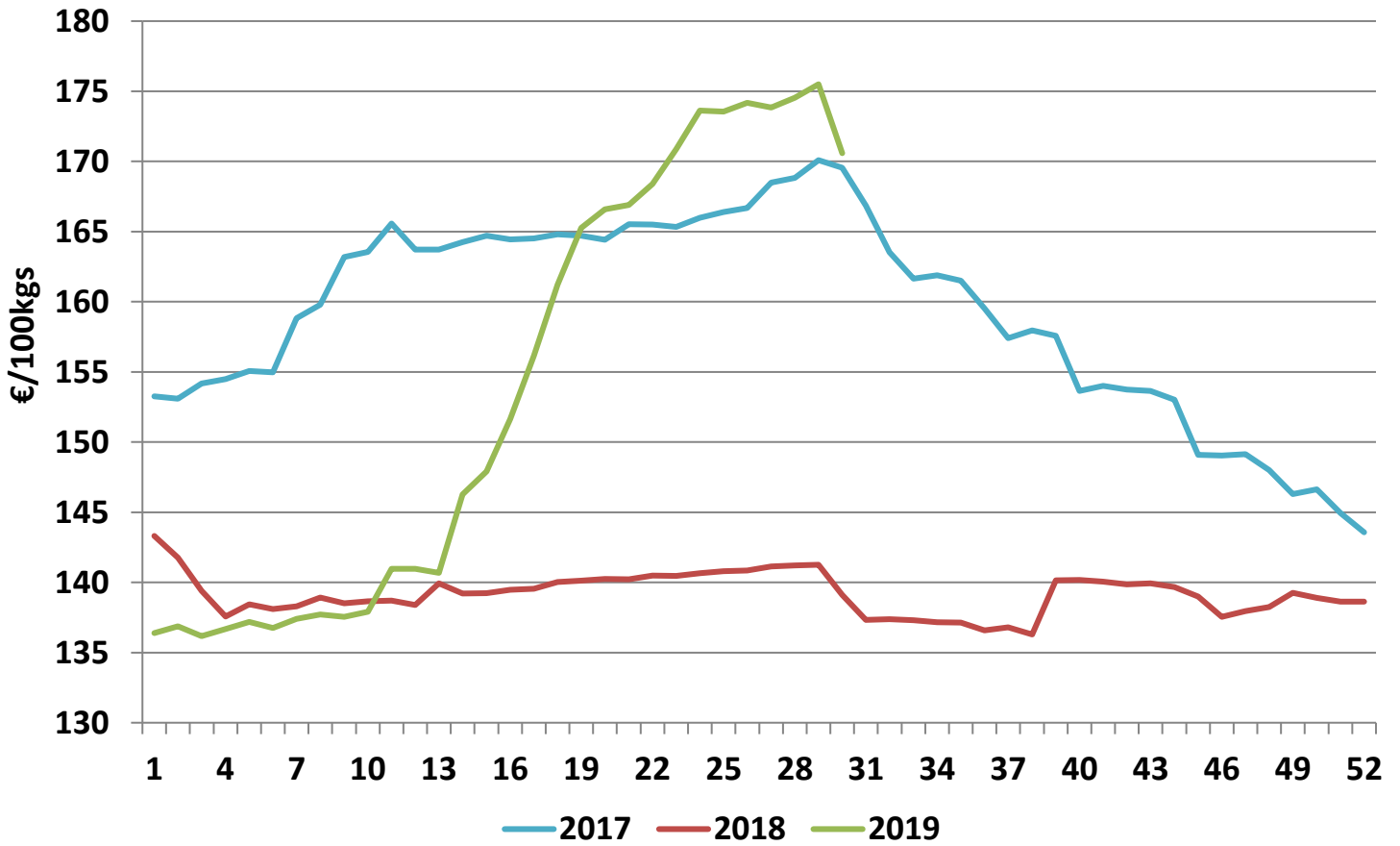
Cattle exported, w/c 22/07/19



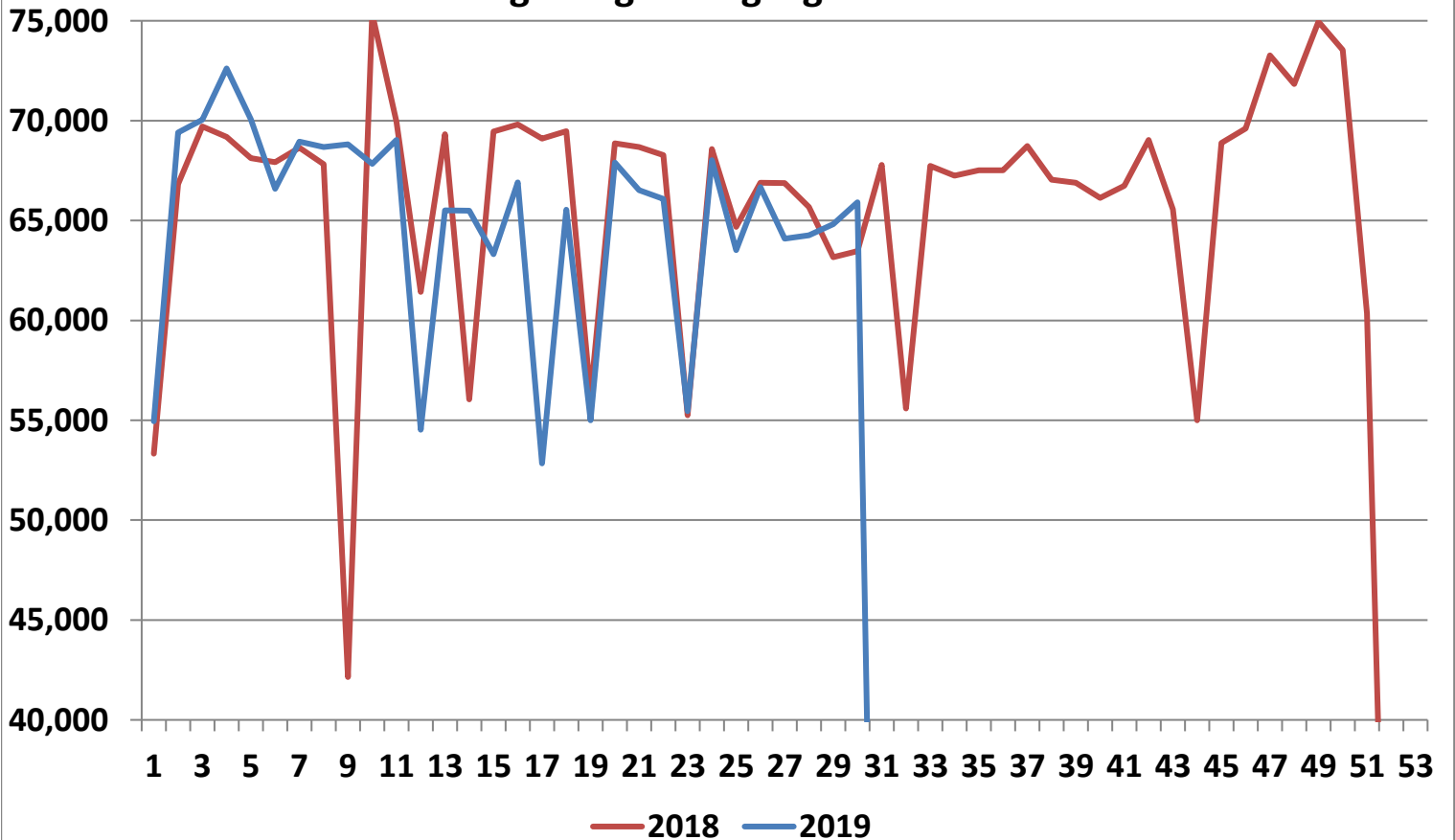
Cumulative cattle export figures, 2019



### Average Grade E Pig Price



### Pig Slaughtering Figures



**Sheepmeat Information for Week 30**

NOTE: EU PRICES  
ARE PROVISIONAL AT  
THE TIME OF  
PUBLICATION AND  
MAY NOT BE  
REFLECTIVE OF THE  
CURRENT PERIOD

Irish Prices €/100 kg	2019	2018	Change
<b>Ave Factory Price</b>	<b>447.33</b>	<b>468.74</b>	<b>-4.6%</b>
<b>Ave Mart Price</b>	<b>397.54</b>	<b>388.62</b>	<b>2.3%</b>
<b>National Ave Price</b>	<b>432.39</b>	<b>444.7</b>	<b>-2.8%</b>
<b>YTD Ave</b>	<b>486.16</b>	<b>517.09</b>	<b>-6.0%</b>

EU Market Rates Heavy Lambs	€/100kg	% of Commu Price
Belgium	488.8	102%
Denmark	512.7	107%
Germany	508.8	107%
Spain	475.3	100%
France	589.0	123%
Croatia	523.6	110%
Ireland	437.3	92%
Italy	542.0	114%
Cyprus	455.0	95%
Latvia	420.1	88%
Lithuania	395.9	83%
Netherlands	515.9	108%
Austria	546.0	114%
Poland	441.0	92%
Romania	242.4	51%
Finland	358.8	75%
Sweden	486.5	102%
Northern Ireland	400.6	84%
Great Britain	461.1	97%
United Kingdom	456.8	96%
Community	477.4	100%

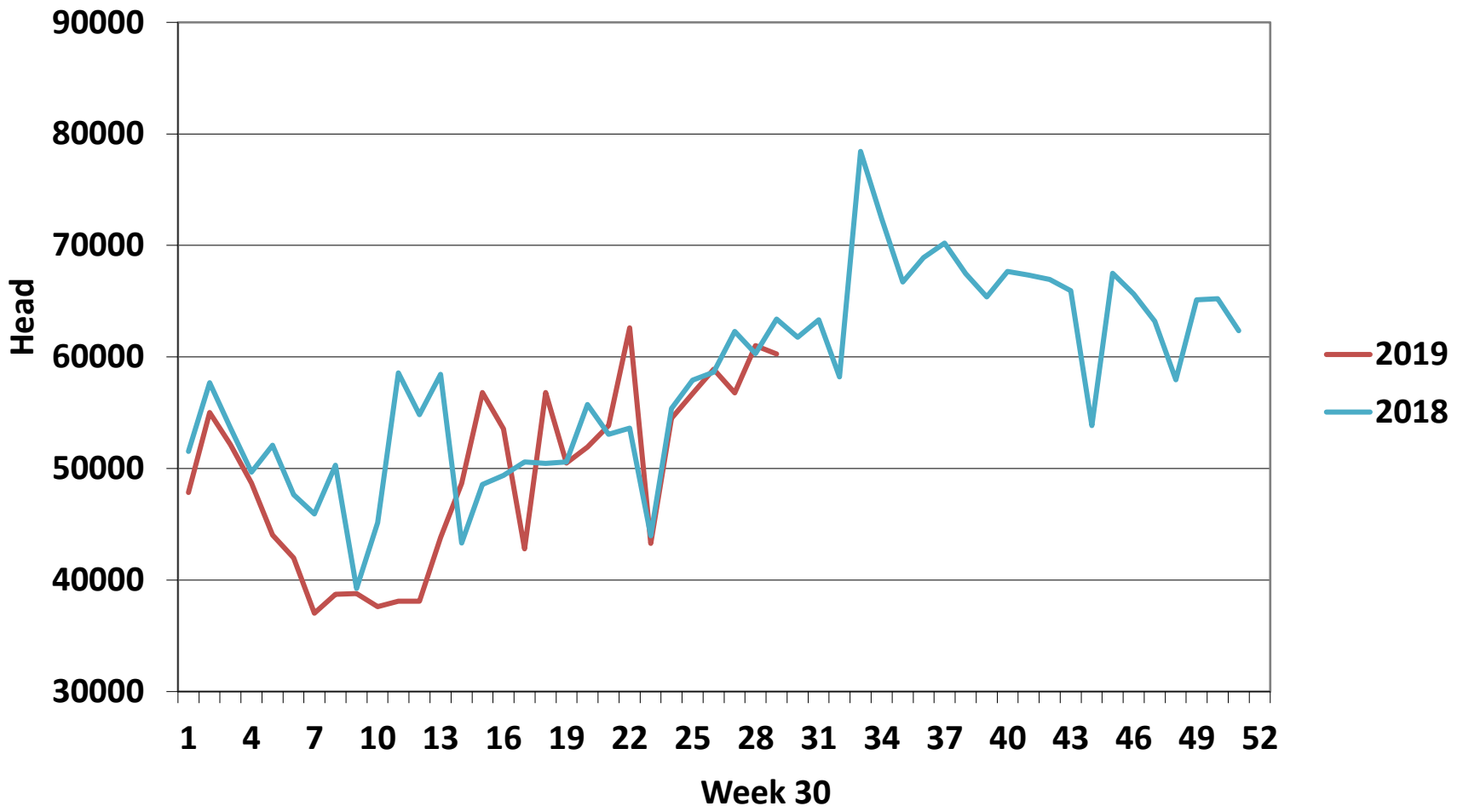
Slaughterings	2019	2018	Change
<b>Weekly</b>	<b>60,761</b>	<b>61,755</b>	<b>-2%</b>
<b>YTD</b>	<b>1,491,621</b>	<b>1,583,623</b>	<b>-6%</b>

**REPORT ON SLAUGHTERING AT SHEEP EXPORT PREMISES  
WEEK 30**

CATEGORY	2019		2018		DIFFERENCE	
	Weekly	Cumulative	Weekly	Cumulative	Weekly	Cumulative
Lambs/Hoggets	382	736,833	355	827,510	27	90,677
Spring Lambs	50,480	539,321	48,332	490,192	2,148	49,129
Ewes and Rams	9,840	215,216	13,066	265,794	-3,226	50,578
Light Lambs	59	251	2	127	57	124
<b>TOTAL</b>	<b>60,761</b>	<b>1,491,621</b>	<b>61,755</b>	<b>1,583,623</b>	<b>-994</b>	<b>-92,002</b>



### Weekly Sheep Slaughtering



### Ave. Price €/100 kg for Sheepmeat

