

Meat Market Report

19/08/19 - 25/08/19

Week

34



**An Roinn Talmhaíochta,
Bia agus Mara**

Department of Agriculture,
Food and the Marine

MARKET SUMMARY

Beef

Deadweight Prices c/100Kg (Including VAT)

	U3	U4	R3	R4	O3	O4	P+
Steers	373.3	373.1	362.9	361.6	343.2	343.5	319.5
Heifers	384.9	379.9	371.7	369.5	353.8	352.3	320.3
Young Bulls	356.8	353.1	345.4	347.6	325.0	327.9	308.2
Cows			316.7	316.5	297.3	297.5	287.9

Liveweight Prices

*Bull Calf Average Price	€176.7 per head (Excluding VAT)
**Young Store Average Price	€200.0 per 100kg (Excluding VAT)
***Yearling (male & female) Price	€181.0 per 100kg (Excluding VAT)

* Aged 8-28 days ** Aged 180-364 days, Male & Female ***age 365-730 days

Slaughterings

34,129 cattle slaughtered this week, of which steers were 14,875 (44%), heifers 9,073 (27%), young bulls 2,886 (8%) and cows 6,541 (19%). Total YTD slaughter is 1,146,912 compared to 1,125,254 in 2018, a 2% increase.

Live Trade

1,081 cattle were exported in the week commencing 19/08/2019*; 627 to EU (Except NI). Live exports for 2019 amount to 240,544 compared to 199,000 in 2018, up 21% on 2018 levels.

*This data is provisional and subject to revision.

The next meeting of the Management Committee for the Common Organisation of Agricultural Markets (Animal Products Sector) is 29th August 2019

CONTENTS:

Page 2: Market Summary Beef
 Page 3: Market Summary Other Meats
 Page 4: Beef Price and Slaughter Summary
 Page 5: Comparative Beef Prices
 Page 6: Steer and Young Bull Price
 Page 7: Heifer and Cow Graphs
 Page 8: Price and Slaughter Graphs
 Page 9: Liveweight Beef Graphs

Page 10: Beef Export Maps
 Page 11: Beef Export Info
 Page 12: Pig price and slaughter graphs
 Page 13: Sheep prices and slaughter
 Page 15: Sheep price and slaughter graphs

MARKET SUMMARY

Pigmeat

Grade E Pig
Prices (Ex.
VAT)

The Grade E Pig price for week commencing 19/08/2019 was €170.56 per 100Kg compared to €137.15 in the same week last year, which represents a 24% increase.

Slaughtering

66,669 pigs were slaughtered in week 34 of which 1,713 were sows. The cumulative figure for pig slaughterings in 2019 is 2,204,924 which is a 1% decrease with the same point last year.

Sheepmeat

Sheepmeat
Prices (Ex.
VAT)

The national average price for the week commencing 19/08/2019 was €414.37 per 100Kg, a decrease of 5.4% over the same week last year.

Slaughtering

63,907 sheep were slaughtered at sheep export premises the week commencing 19/08/2019, compared to 72,400 in the same week of 2018. Sheep slaughterings for 2019 are 7% down on 2018 at 1,725,845 head.

Live Trade

Total live exports to European Countries stood at 20,769 head to the end of 2018.

Poultry

Slaughtering

Cumulative poultry slaughterings for 2019* stand at 68,989,882 birds at the end of week 34, up 8% compared to the same period last year.

*Latest Figures are provisional and subject to change

Dead Weight Prices	W/C	W/C	Same week 2018	% change prev week	% change 2018
	19/08/19	12/08/19	20/08/18		
Steers (R3) (c/kg)	344.4	344.2	383.1	0.1%	-10.1%
Heifers (R3) (c/kg)	352.6	353.4	393.9	-0.2%	-10.5%
Young Bulls (U3) (c/kg)	338.6	342.2	385.6	-1.0%	-12.2%
Cows (04) (c/kg)	282.0	283.8	309.0	-0.6%	-8.7%

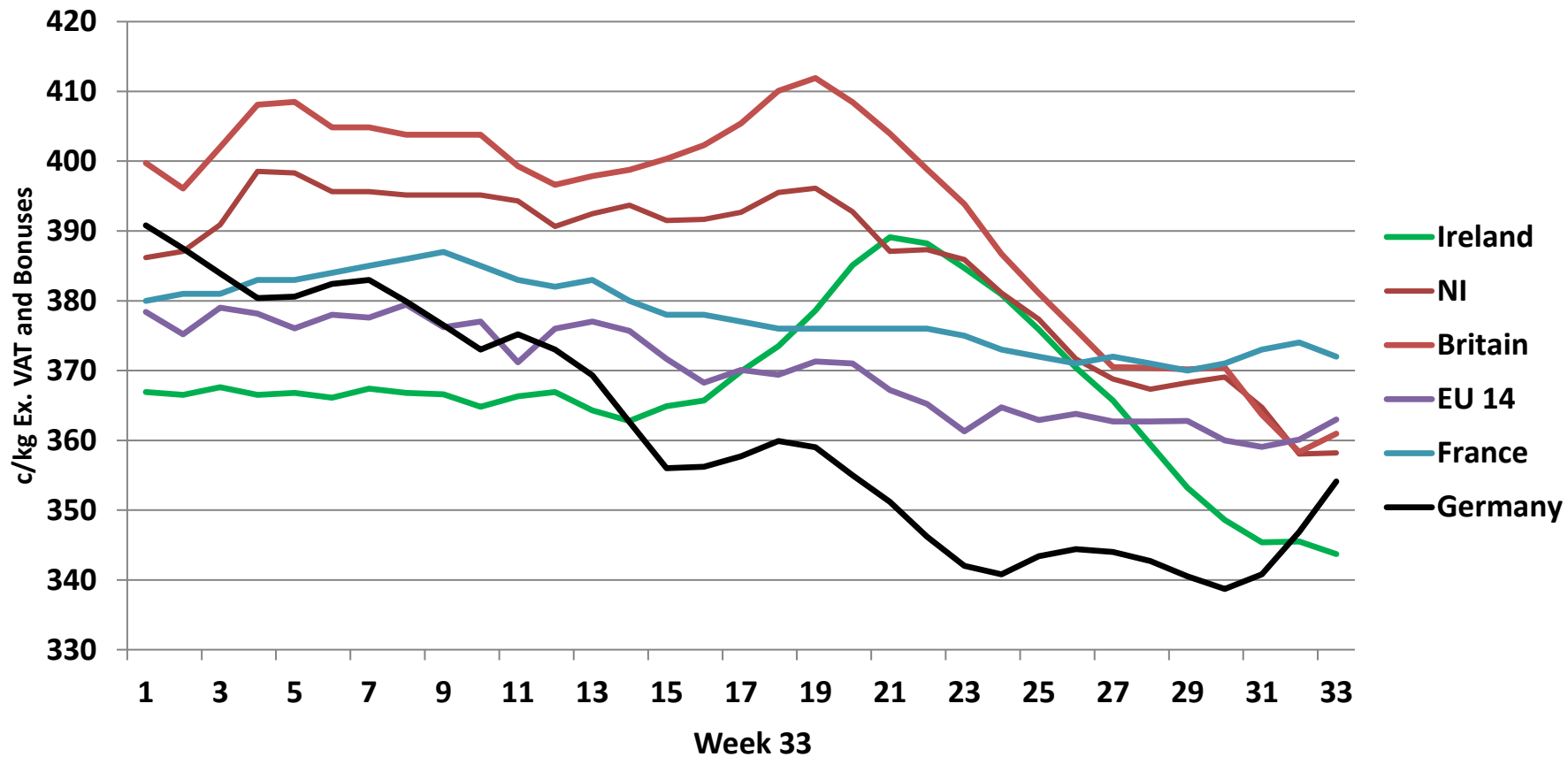
Live Weight Prices	W/C	W/C	Same week 2018	% change previous week	% change 2018
	19/08/19	12/08/19	20/08/18		
Yearlings (Male) (Aged 365 - 730 days) - (€/100Kg)	179	180	186	-0.6%	-3.8%
Yearlings (Female) (Aged 365 - 730 days) - (€/100Kg)	183	184	192	-0.5%	-4.7%
Young Stores (Male & Female) (Aged 180 - 364 days) - (€/100Kg)	200	199	225	0.5%	-11.1%
Bull Calf (€/head) Dairy	130.2	149.7	170.8	-13.1%	-23.8%
Bull Calf (€/head) Beef	223.3	194.6	211.6	14.7%	5.6%
Bull Calf (€/head) Average	176.7	172.2	191.2	2.7%	-7.5%

Slaughter Figures	% of weekly figures	W/C	Same week 2018	Year to Date		Change 2019 v 2018	
		19-Aug-19		2019	2018	Head	%
Steers	43.6%	14,875	14,259	387,552	402,106	-14,554	-3.6%
Cows	19.2%	6,541	7,616	238,140	251,291	-13,151	-5.2%
Heifers	26.6%	9,073	9,013	337,294	309,469	27,825	9.0%
Young Bulls	8.5%	2,886	2,227	157,910	141,073	16,837	11.9%
Mature Bulls	2.2%	754	720	26,016	21,315	4,701	22.1%
Total	100%	34,129	33,835	1,146,912	1,125,254	21,658	1.9%

821

Live Exports	W/C	Same week	W/C	Year to Date		Change 2019 v 2018	
	19-Aug-19	2018	12-Aug-19	2019	2018	Head	%
Northern Ireland	276	372	411	21,024	10,913	10,111	93%
EU Except NI	627	1,386	634	211,443	170,295	41,148	24%
Third Countries	178	3,131	0	8,077	17,792	-9,715	-
Total	1,081	4,889	1,045	240,544	199,000	41,544	21%
Calves YTD:	190,996			Adult YTD:Cattle		49,419	

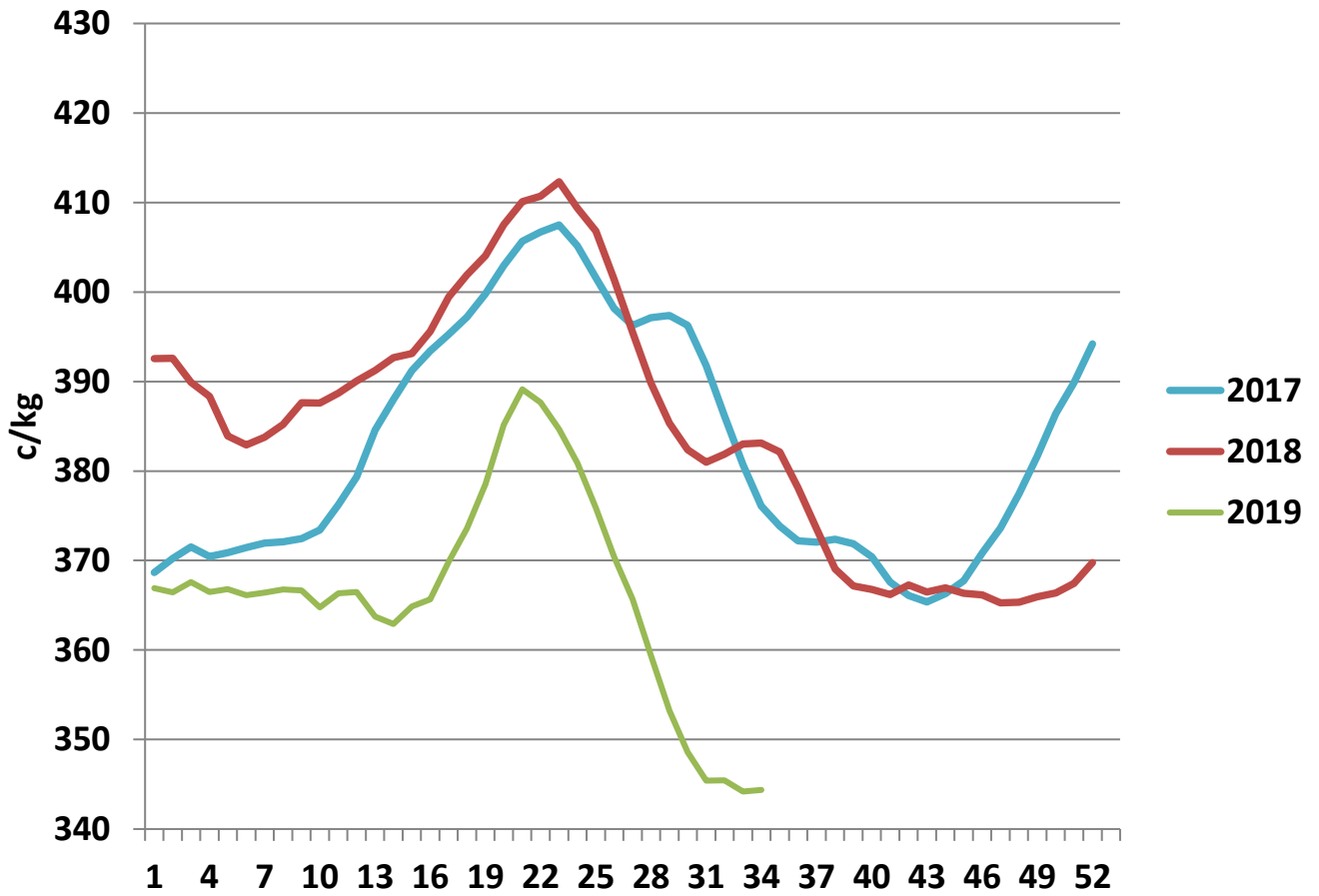
Irish Deadweight Cattle Prices vs Selected Other Markets, 2019



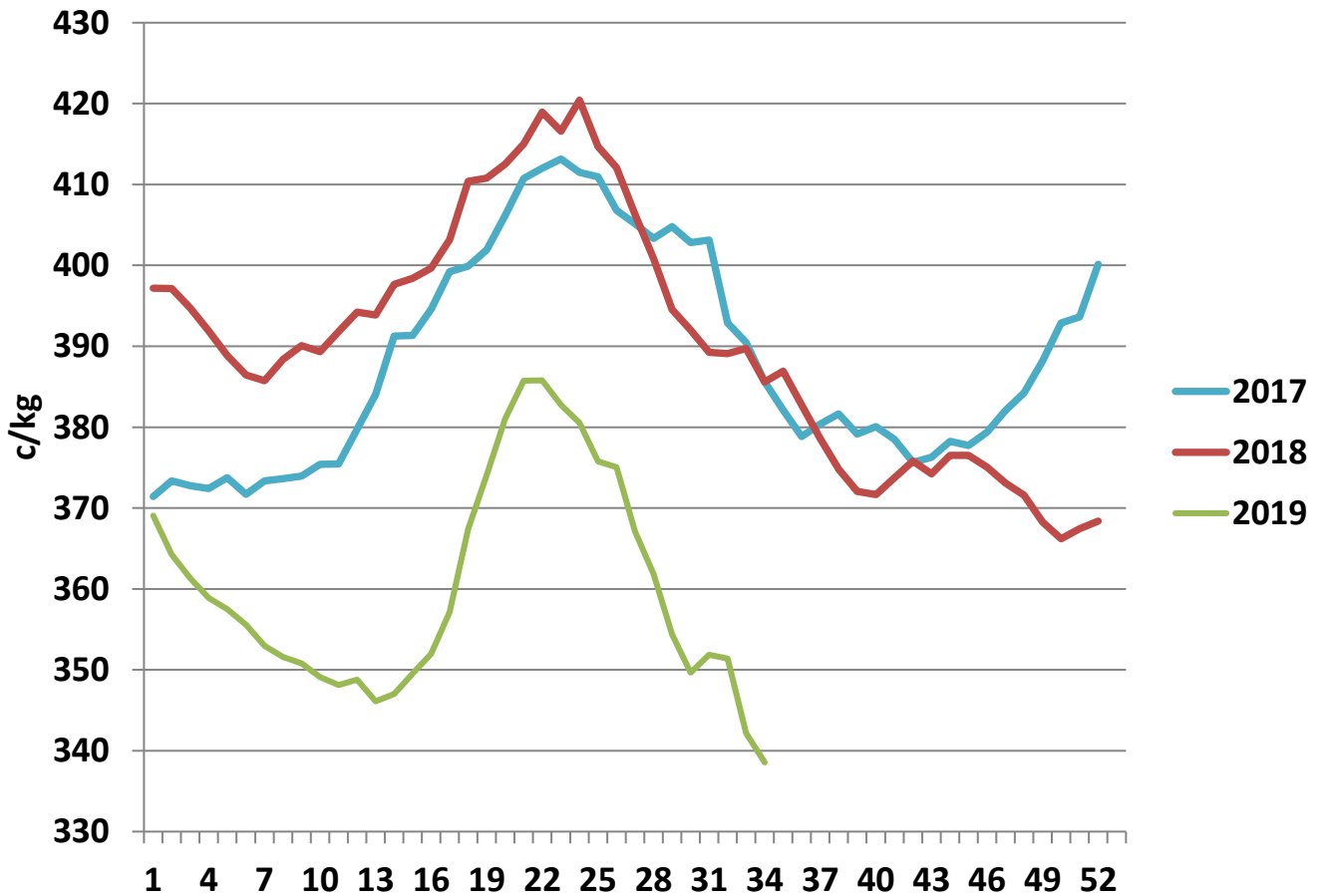
Livestock Pricing

	Ireland	NI	Britain	EU 14 Average	France	Germany
W/C 12/08/19	343.7	358.18	360.94	363	372	354.1

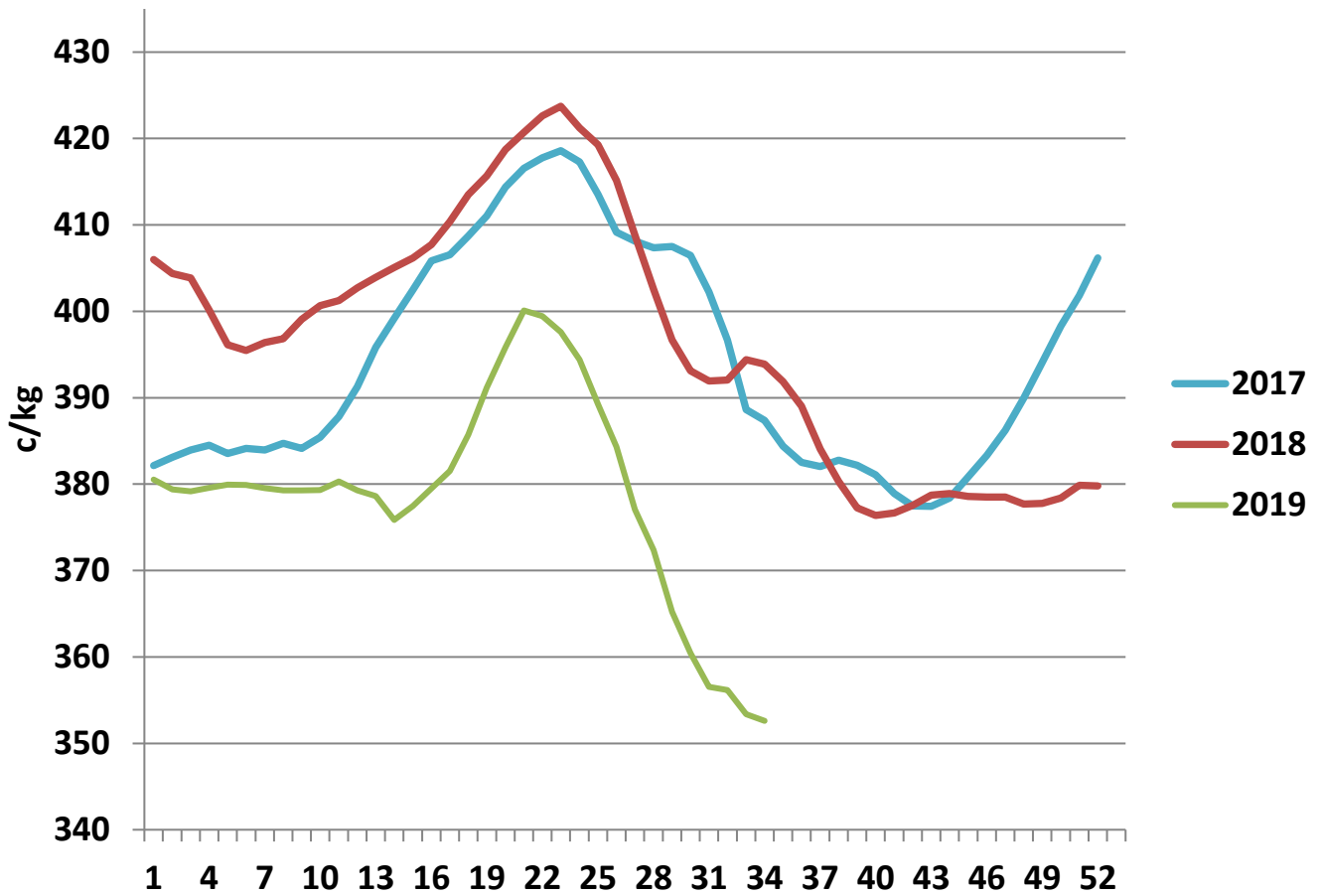
R3 Steer prices ex. VAT



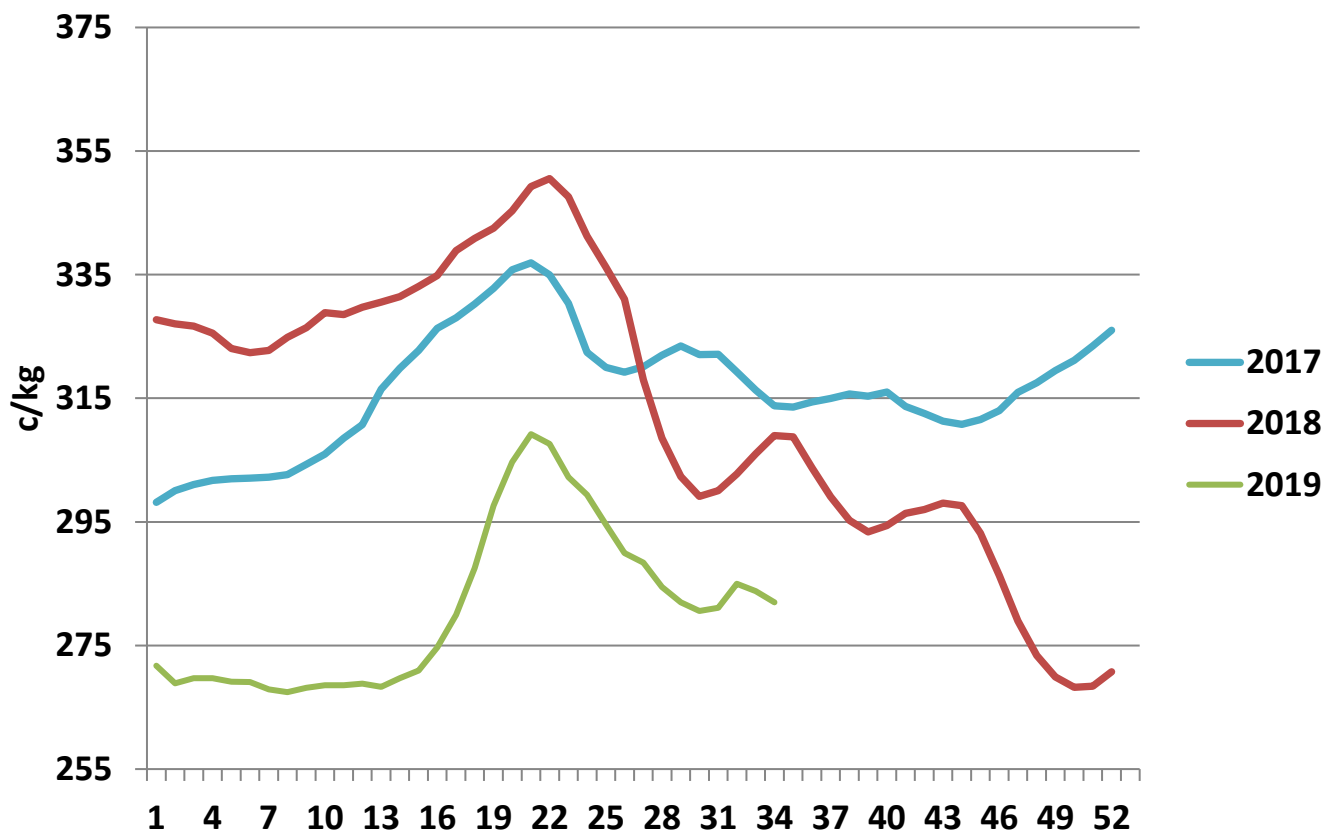
U3 Young Bull prices ex. VAT



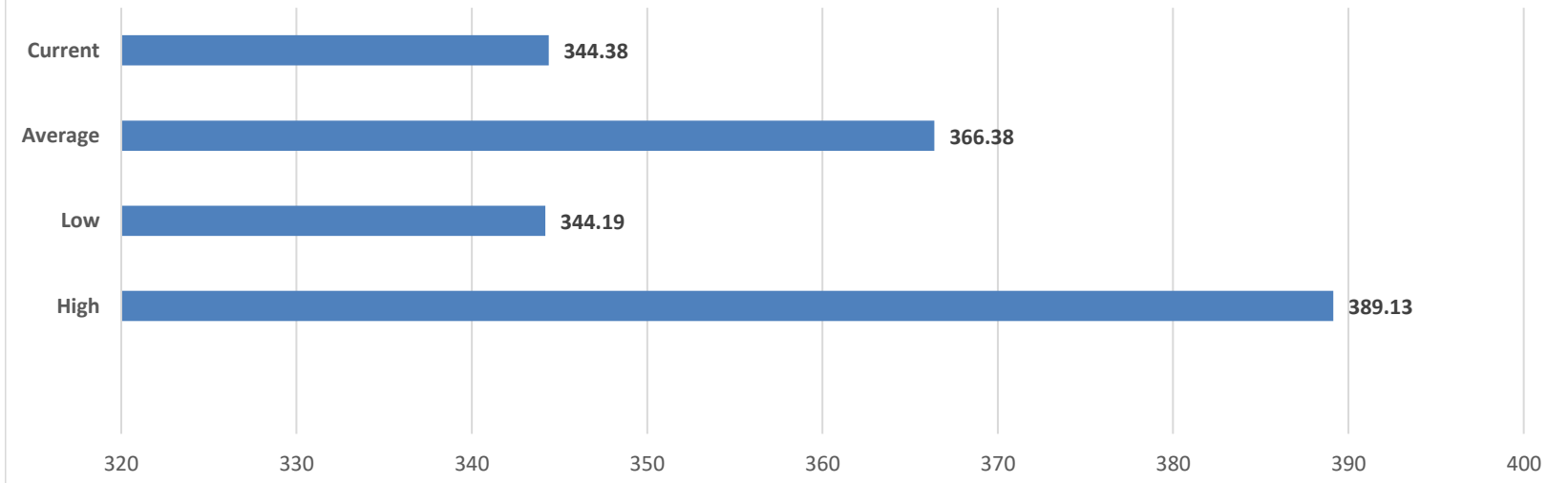
R3 Heifer prices ex. VAT



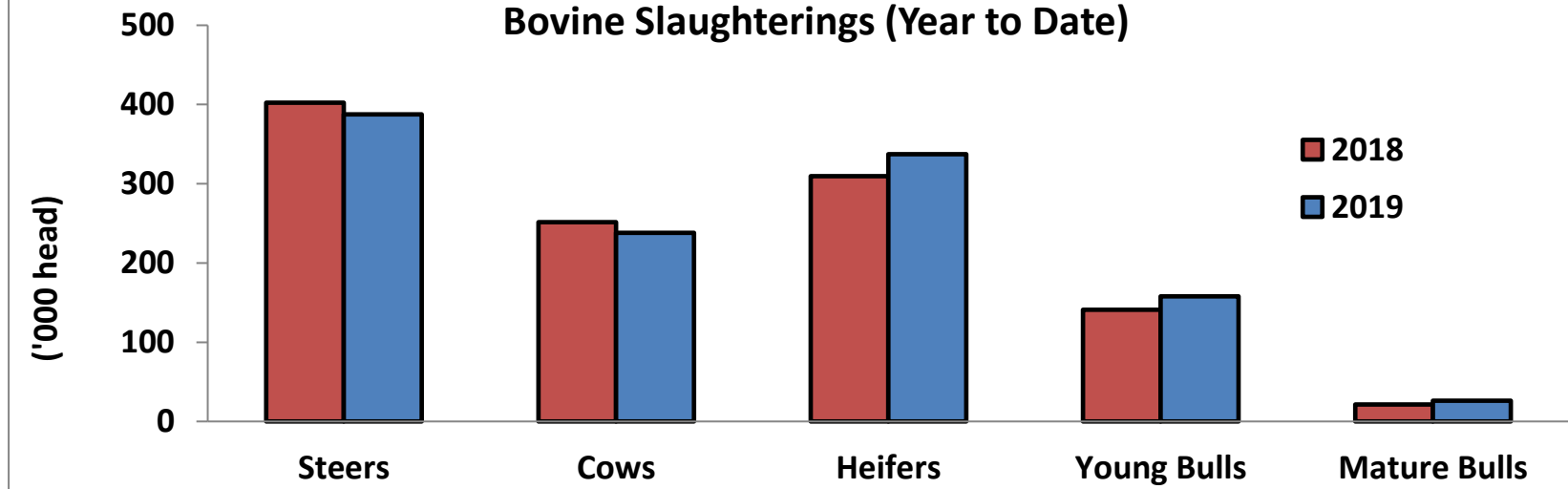
O4 Cow prices ex. VAT



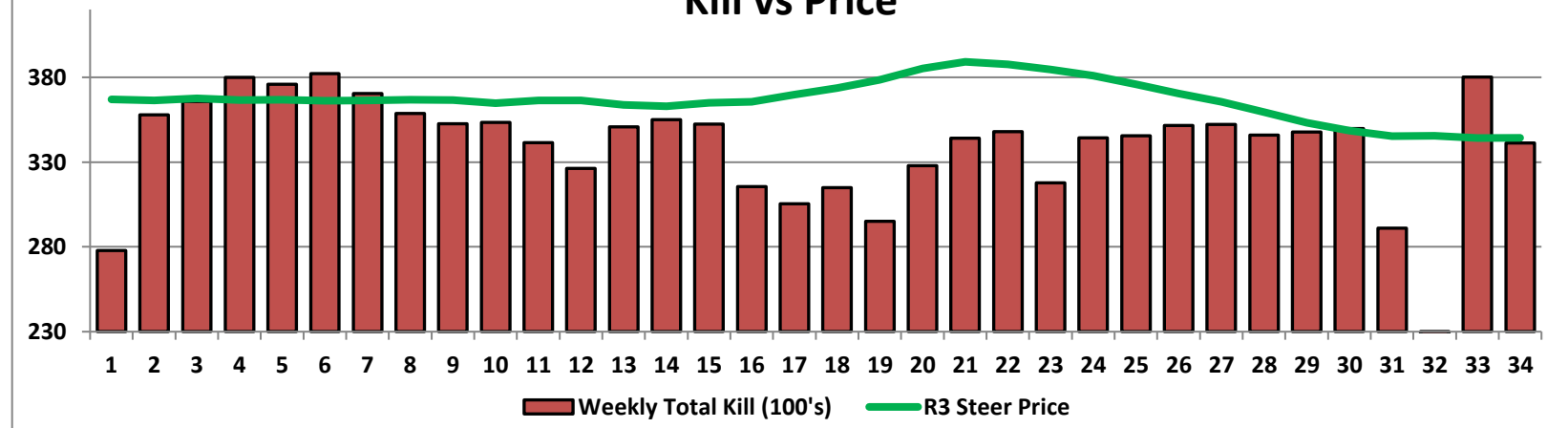
6 Month R3 Steer Statistics



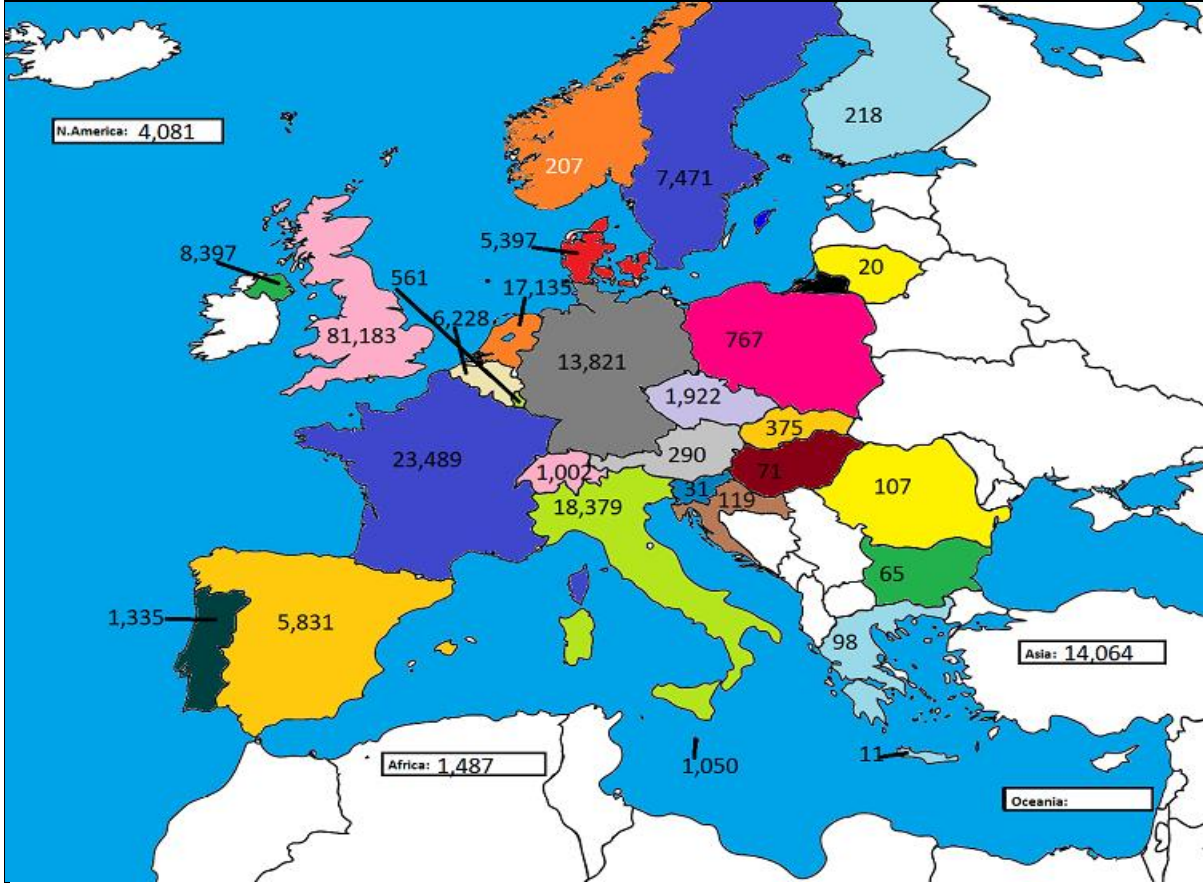
Bovine Slaughterings (Year to Date)



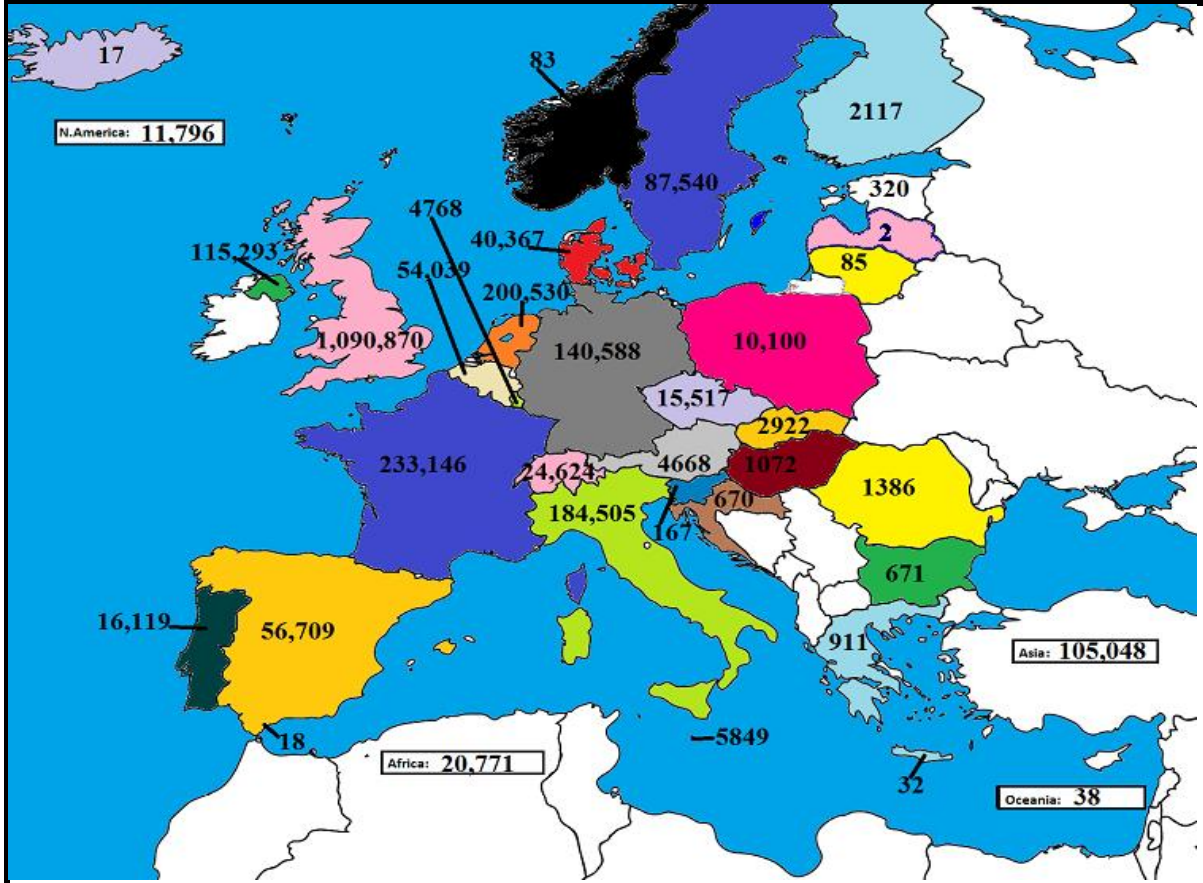
Kill vs Price



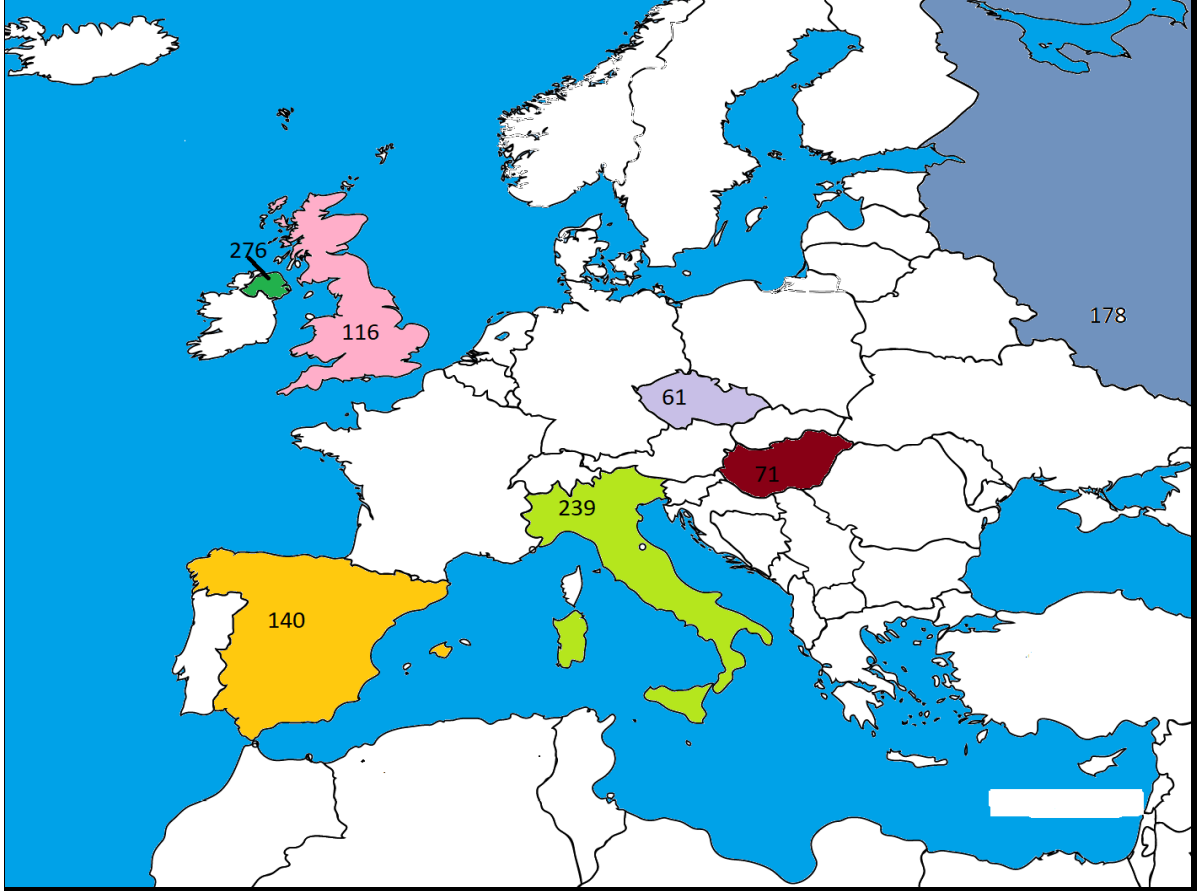
June 2019 Beef exports, €000 (CSO figures)



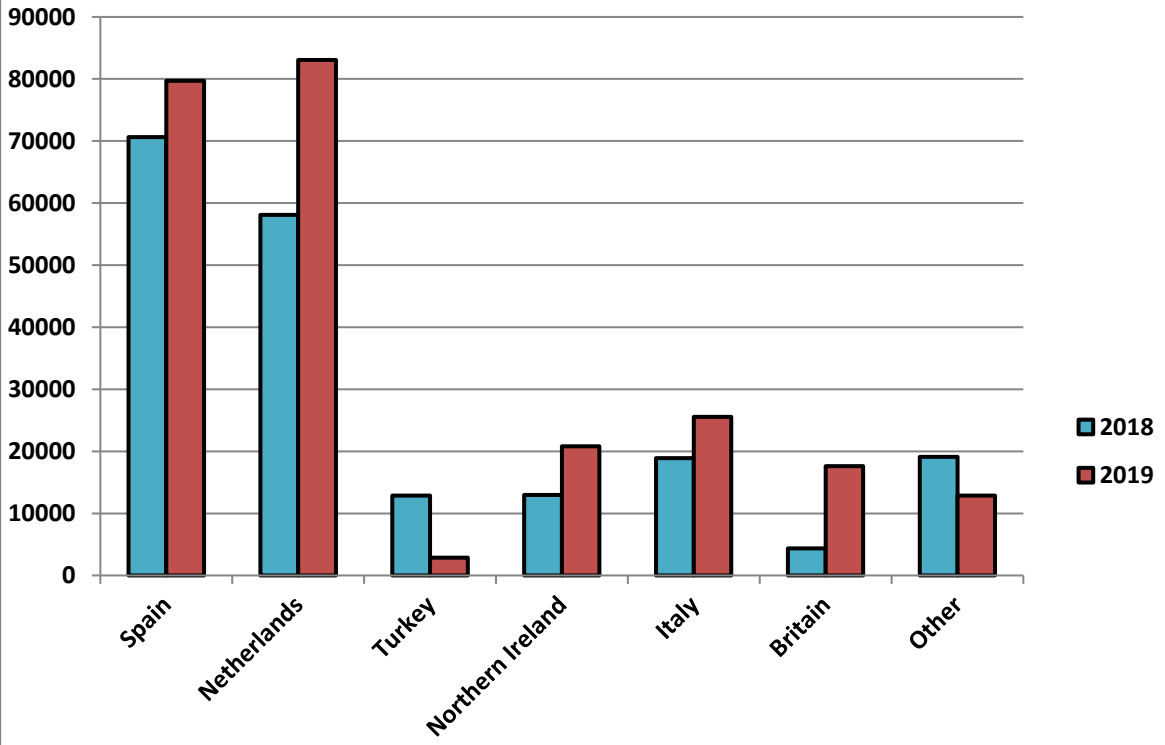
Cumulative beef exports to Dec 2018, €000 (CSO figures)



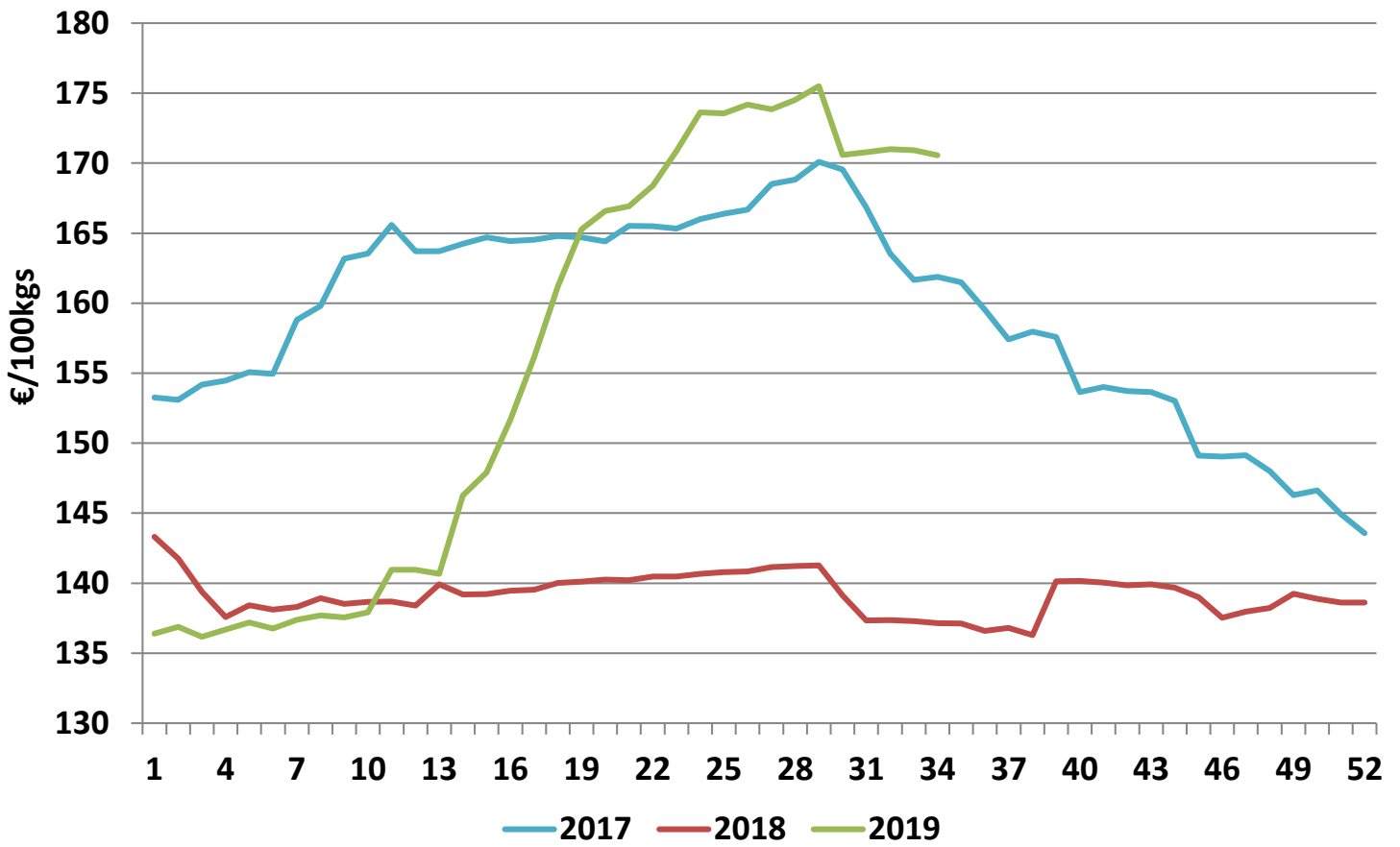
Cattle exported, w/c 19/08/19



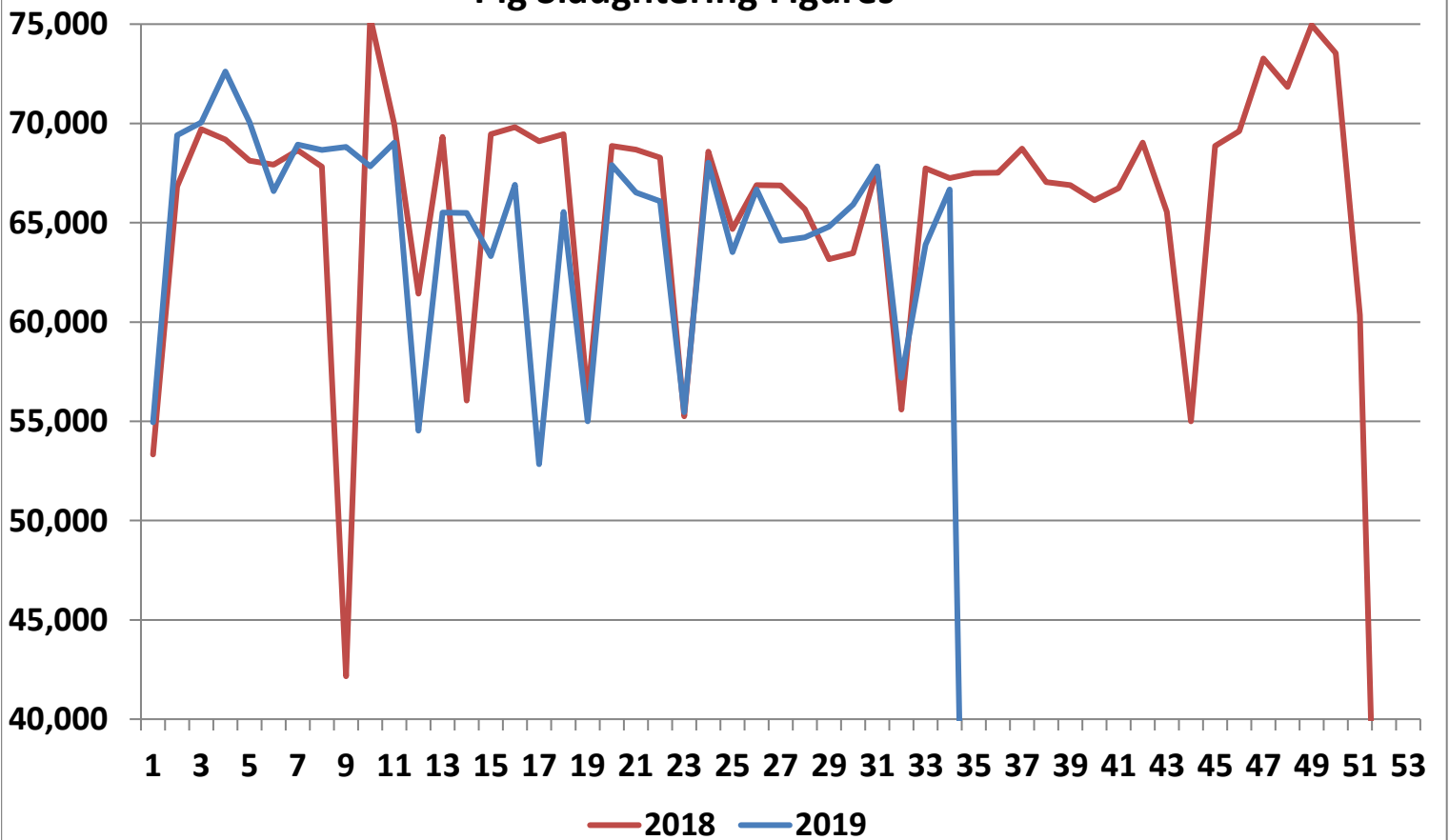
Cumulative cattle export figures, 2019



Average Grade E Pig Price



Pig Slaughtering Figures



Sheepmeat Information for Week 34

NOTE: EU PRICES
ARE PROVISIONAL AT
THE TIME OF
PUBLICATION AND
MAY NOT BE
REFLECTIVE OF THE
CURRENT PERIOD

Irish Prices €/100 kg	2019	2018	Change
Ave Factory Price	429.18	464.64	-7.7%
Ave Mart Price	379.84	375.53	1.1%
National Ave Price	414.37	438.04	-5.4%
YTD Ave	478.78	508.62	5.9%

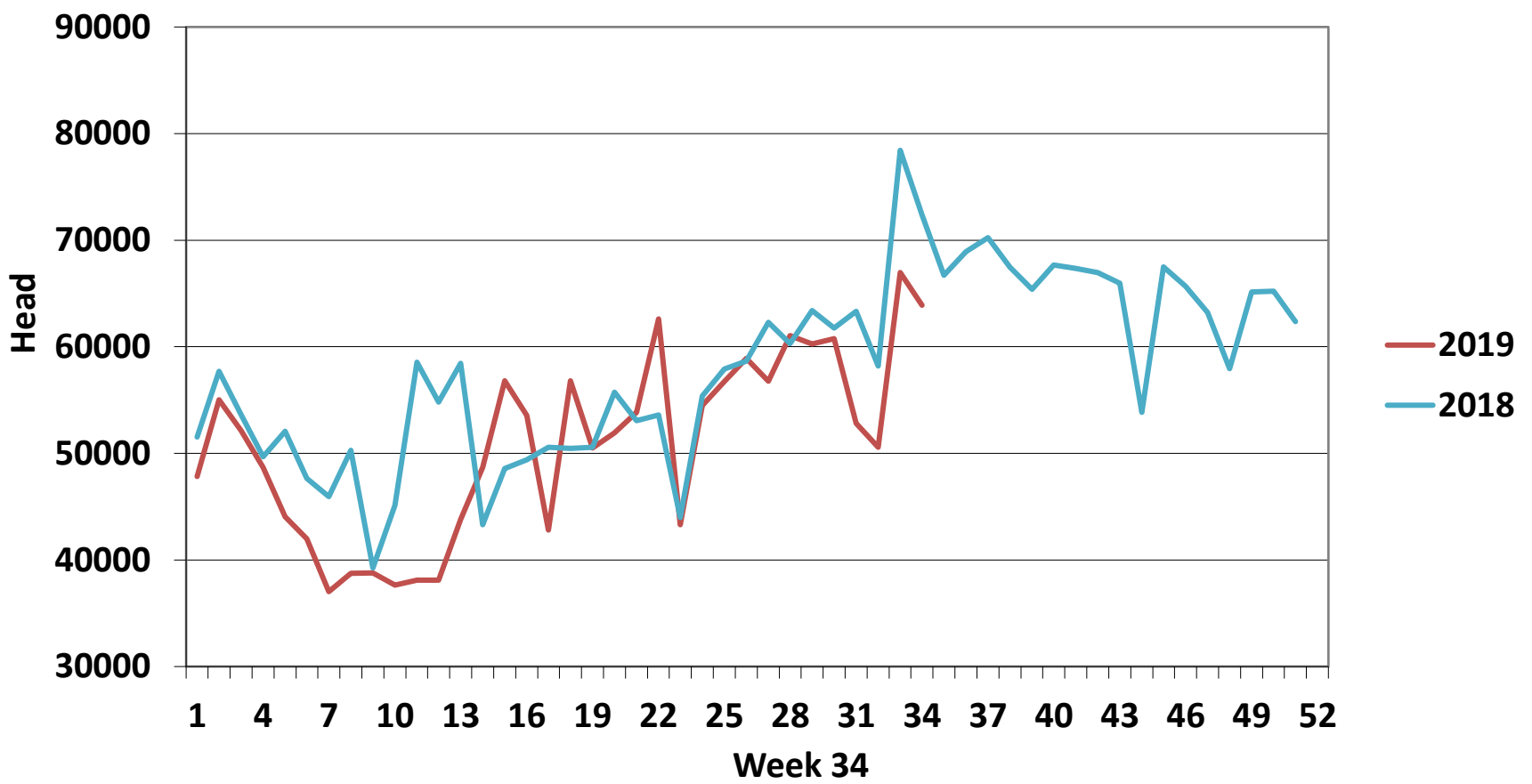
Slaughterings	2019	2018	Change
Weekly	63,907	72,400	-12%
YTD	1,725,845	1,855,986	-7%

EU Market Rates Heavy Lambs	€/100kg	% of Commu Price
Belgium	475.6	109%
Denmark	512.7	111%
Germany	510.2	108%
Spain	492.4	106%
France	591.0	128%
Croatia	583.7	109%
Ireland	429.0	94%
Italy	544.0	118%
Cyprus	491.0	104%
Latvia	403.9	88%
Lithuania	448.9	97%
Netherlands	528.3	114%
Austria	521.0	124%
Poland	433.7	96%
Romania	190.5	55%
Finland	391.4	85%
Sweden	468.0	98%
Northern Ireland	384.4	85%
Great Britain	428.1	93%
United Kingdom	425.0	93%
Community	460.6	100%

**REPORT ON SLAUGHTERING AT SHEEP EXPORT PREMISES
WEEK 34**

CATEGORY	2019		2018		DIFFERENCE	
	Weekly	Cumulative	Weekly	Cumulative	Weekly	Cumulative
Lambs/Hoggets	191	737,464	84	828,340	107	90,876
Spring Lambs	52,346	736,356	62,696	719,613	-10,350	16,743
Ewes and Rams	11,370	251,664	9,620	307,905	1,750	56,241
Light Lambs		361		128	0	233
TOTAL	63,907	1,725,845	72,400	1,855,986	-8,493	-130,141

Weekly Sheep Slaughterings



Ave. Price €/100 kg for Sheepmeat

