

# Meat Market Report

26/08/19 - 01/09/19

Week  
35



**An Roinn Talmhaíochta,  
Bia agus Mara**  
Department of Agriculture,  
Food and the Marine

# MARKET SUMMARY

## Beef

### Deadweight Prices c/100Kg (Including VAT)

	U3	U4	R3	R4	O3	O4	P+3
Steers	371.9	368.2	361.6	360.4	343.2	343.1	320.4
Heifers	384.6	380.4	372.0	369.3	355.8	352.7	326.2
Young Bulls	360.2	372.1	352.2	347.1	331.0	330.5	317.0
Cows			316.4	316.1	298.7	299.3	290.6

### Liveweight Prices

*Bull Calf Average Price	€207.3 per head (Excluding VAT)
**Young Store Average Price	€203.0 per 100kg (Excluding VAT)
***Yearling (male & female) Price	€179.0 per 100kg (Excluding VAT)

\* Aged 8-28 days \*\* Aged 180-364 days, Male & Female \*\*\*age 365-730 days

### Slaughterings

30,166 cattle slaughtered this week, of which steers were 13,862 (46%), heifers 8,981 (30%), young bulls 1,898 (6%) and cows 4,920 (16%). Total YTD slaughter is 1,177,077 compared to 1,162,142 in 2018, a 1% increase.

### Live Trade

2,071 cattle were exported in the week commencing 26/08/2019, 1,808 to EU (Except NI). Live exports for 2019 amount to 242,614 compared to 200,634 in 2018, up 21% on 2018 levels.

\*This data is provisional and subject to revision.

The next meeting of the Management Committee for the Common Organisation of Agricultural Markets (Animal Products Sector) is 19th September 2019

### CONTENTS:

Page 2: Market Summary Beef  
 Page 3: Market Summary Other Meats  
 Page 4: Beef Price and Slaughter Summary  
 Page 5: Comparative Beef Prices  
 Page 6: Steer and Young Bull Price  
 Page 7: Heifer and Cow Graphs  
 Page 8: Price and Slaughter Graphs  
 Page 9: Liveweight Beef Graphs

Page 10: Beef Export Maps  
 Page 11: Beef Export Info  
 Page 12: Pig price and slaughter graphs  
 Page 13: Sheep prices and slaughter  
 Page 15: Sheep price and slaughter graphs

# MARKET SUMMARY

## Pigmeat

Grade E Pig  
Prices (Ex.  
VAT)

The Grade E Pig price for week commencing 26/08/2019 was €173.97 per 100Kg compared to €137.13 in the same week last year, which represents a 27% increase.

Slaughtering

67,586 pigs were slaughtered in week 35 of which 1,606 were sows. The cumulative figure for pig slaughterings in 2019 is 2,272,629 which is a 1% decrease with the same point last year.

## Sheepmeat

Sheepmeat  
Prices (Ex.  
VAT)

The national average price for the week commencing 26/08/2019 was €412.41 per 100Kg, a decrease of 4.1% over the same week last year.

Slaughtering

61,942 sheep were slaughtered at sheep export premises the week commencing 26/08/2019, compared to 66,720 in the same week of 2018. Sheep slaughterings for 2019 are 7% down on 2018 at 1,787,787 head.

Live Trade

Total live exports to European Countries stood at 20,769 head to the end of 2018.

## Poultry

Slaughtering

Cumulative poultry slaughterings for 2019\* stand at 68,989,882 birds at the end of week 34, up 8% compared to the same period last year.

\*Latest Figures are provisional and subject to change

Dead Weight Prices	W/C	W/C	Same week 2018	% change prev week	% change 2018
	26/08/19	19/08/19	27/08/18		
Steers (R3) (c/kg)	343.1	344.4	382.1	-0.4%	-10.2%
Heifers (R3) (c/kg)	352.9	352.6	391.9	0.1%	-9.9%
Young Bulls (U3) (c/kg)	341.8	338.6	386.9	1.0%	-11.7%
Cows (04) (c/kg)	284.0	282.0	308.8	0.7%	-8.0%

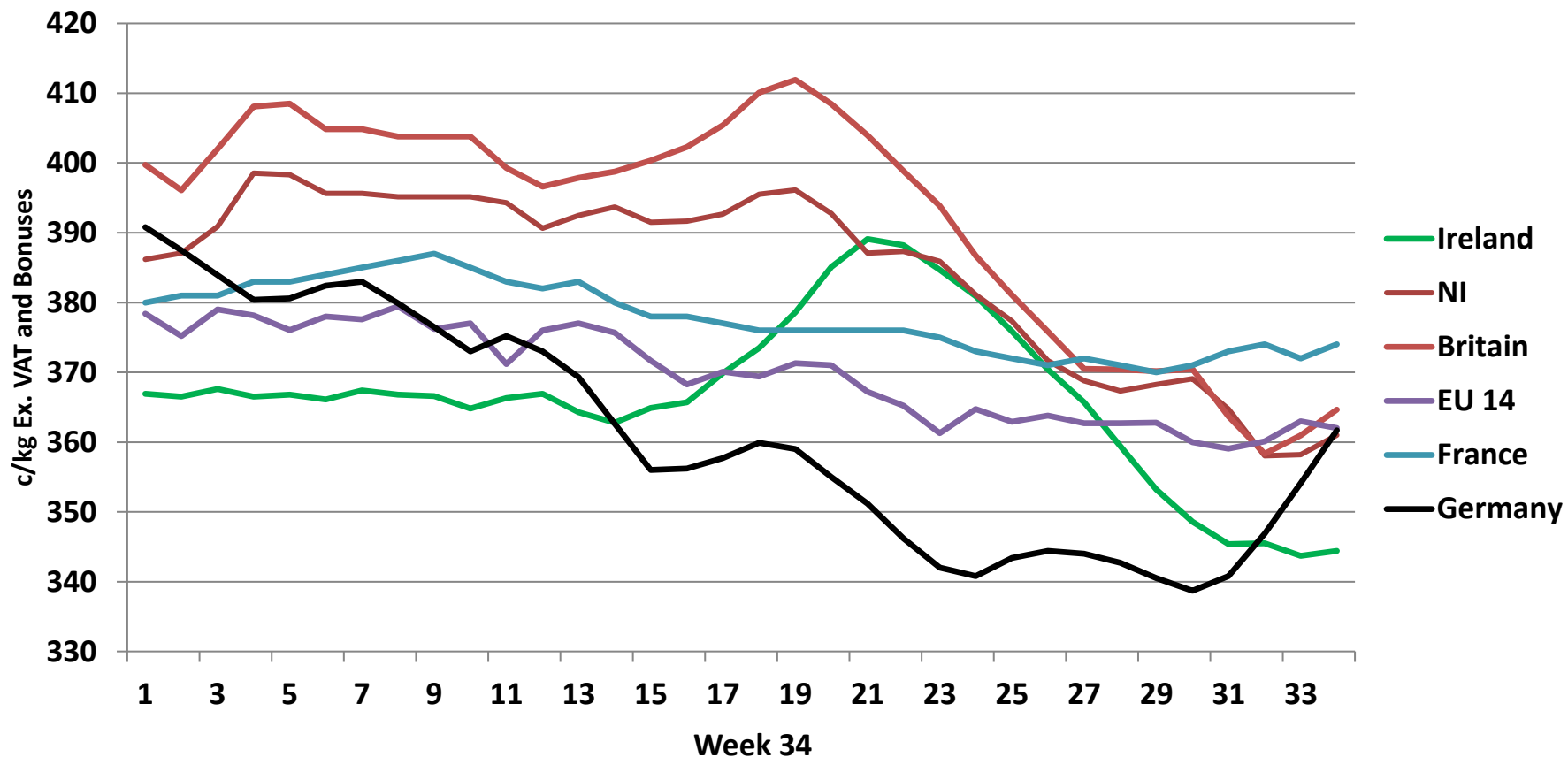
Live Weight Prices	W/C	W/C	Same week 2018	% change previous week	% change 2018
	26/08/19	19/08/19	27/08/18		
Yearlings (Male) (Aged 365 - 730 days) - (€/100Kg)	178	179	183	-0.6%	-2.7%
Yearlings (Female) (Aged 365 - 730 days) - (€/100Kg)	180	183	187	-1.6%	-3.7%
Young Stores (Male & Female) (Aged 180 - 364 days) - (€/100Kg)	203	200	216	1.5%	-6.0%
Bull Calf (€/head) Dairy	171.9	130.2	137.1	32.1%	25.4%
Bull Calf (€/head) Beef	242.7	223.3	239.4	8.7%	1.4%
Bull Calf (€/head) Average	207.3	176.7	188.2	17.3%	10.1%

Slaughter Figures	% of weekly figures	W/C	Same week 2018	Year to Date		Change 2019 v 2018	
		26-Aug-19		2019	2018	Head	%
Steers	46.0%	13,862	15,160	401,414	419,067	-17,653	-4.2%
Cows	16.3%	4,920	7,483	243,060	258,774	-15,714	-6.1%
Heifers	29.8%	8,981	9,247	346,275	318,716	27,559	8.6%
Young Bulls	6.3%	1,898	2,075	159,808	143,619	16,189	11.3%
Mature Bulls	1.7%	505	622	26,520	21,966	4,554	20.7%
<b>Total</b>	<b>100%</b>	<b>30,166</b>	<b>34,587</b>	<b>1,177,077</b>	<b>1,162,142</b>	<b>14,935</b>	<b>1.3%</b>

821

Live Exports	W/C	Same week	W/C	Year to Date		Change 2019 v 2018	
	26-Aug-19	2018	19-Aug-19	2019	2018	Head	%
Northern Ireland	263	282	276	21,287	11,195	10,092	90%
EU Except NI	1,808	1,352	627	213,251	171,647	41,604	24%
Third Countries	0	0	178	8,077	17,792	-9,715	-
<b>Total</b>	<b>2,071</b>	<b>1,634</b>	<b>1,081</b>	<b>242,615</b>	<b>200,634</b>	<b>41,981</b>	<b>21%</b>
<b>Calves YTD:</b>	<b>191,394</b>			<b>Adult YTD:Cattle</b>		<b>51,092</b>	

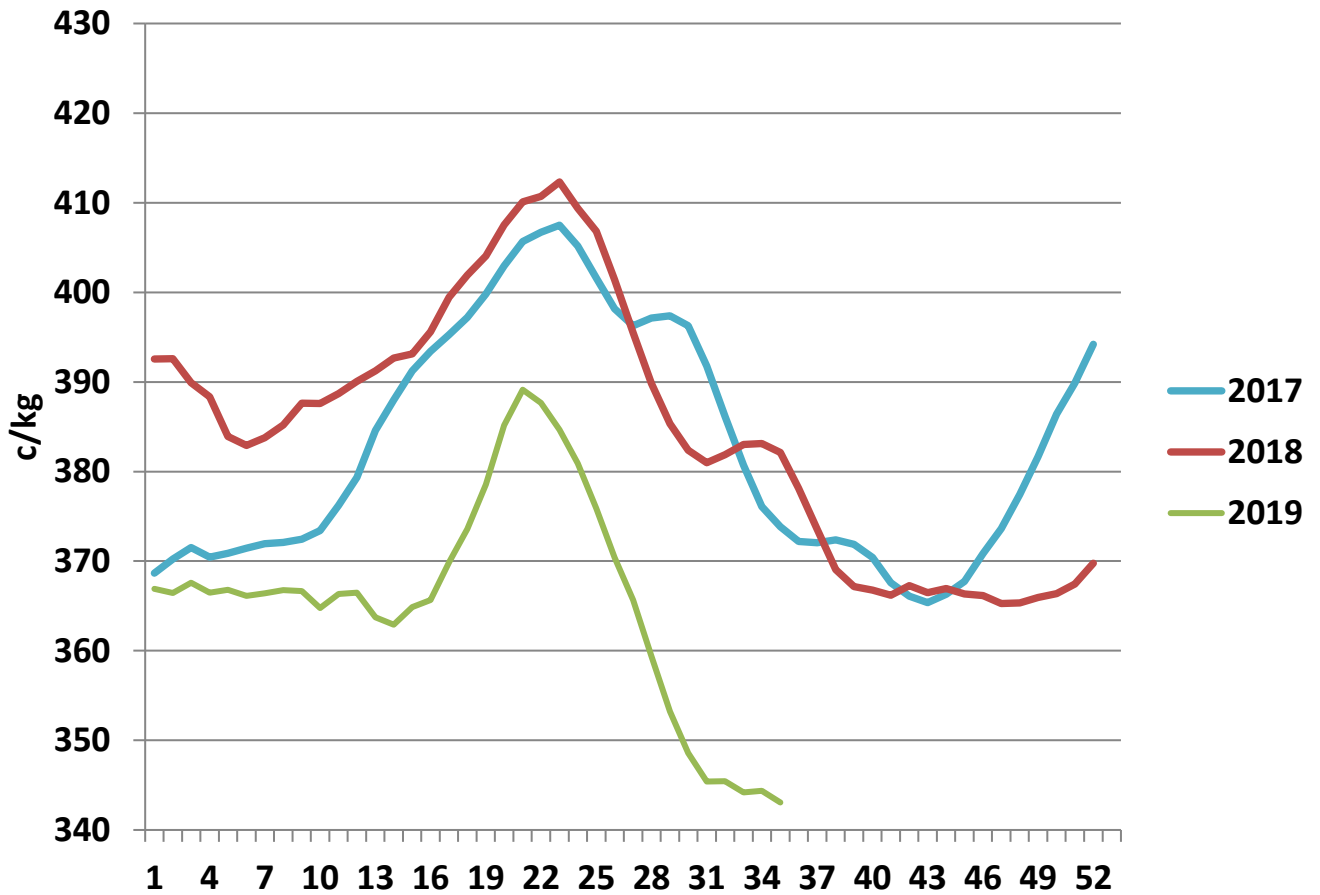
## Irish Deadweight Cattle Prices vs Selected Other Markets, 2019



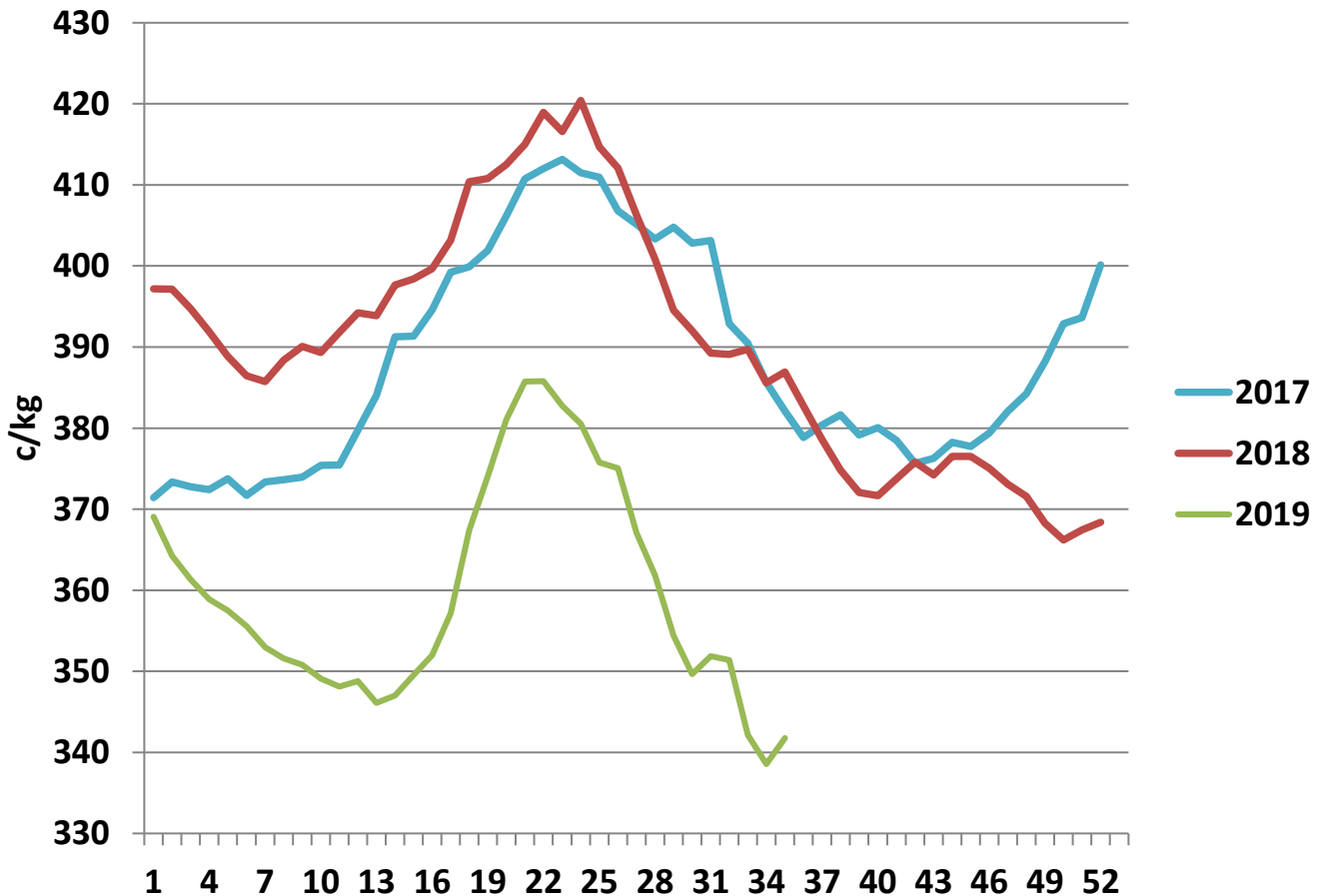
### Livestock Pricing

	Ireland	NI	Britain	EU 14 Average	France	Germany
<b>W/C 19/08/19</b>	<b>344.4</b>	<b>361</b>	<b>364.65</b>	<b>362</b>	<b>374</b>	<b>361.7</b>

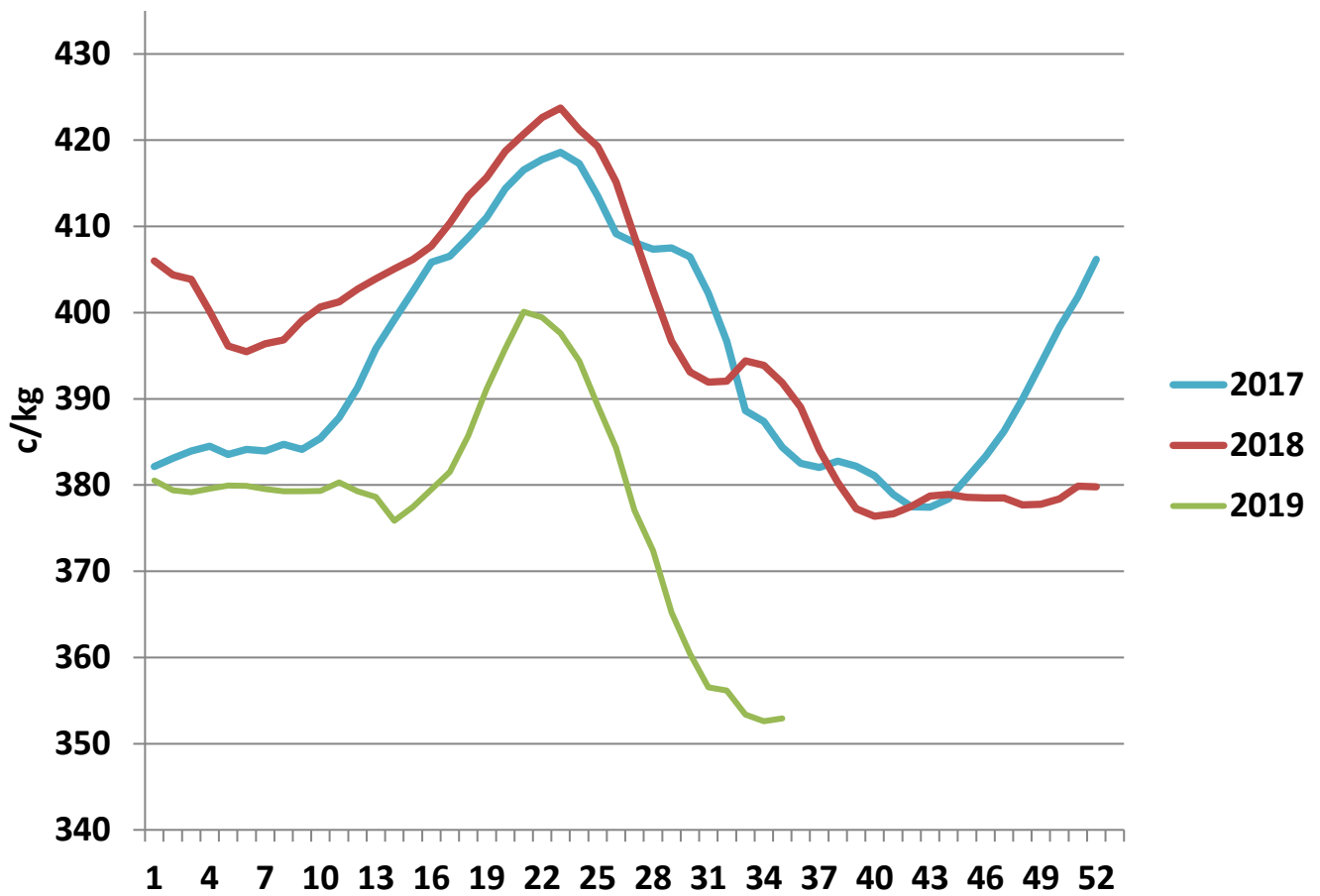
### R3 Steer prices ex. VAT



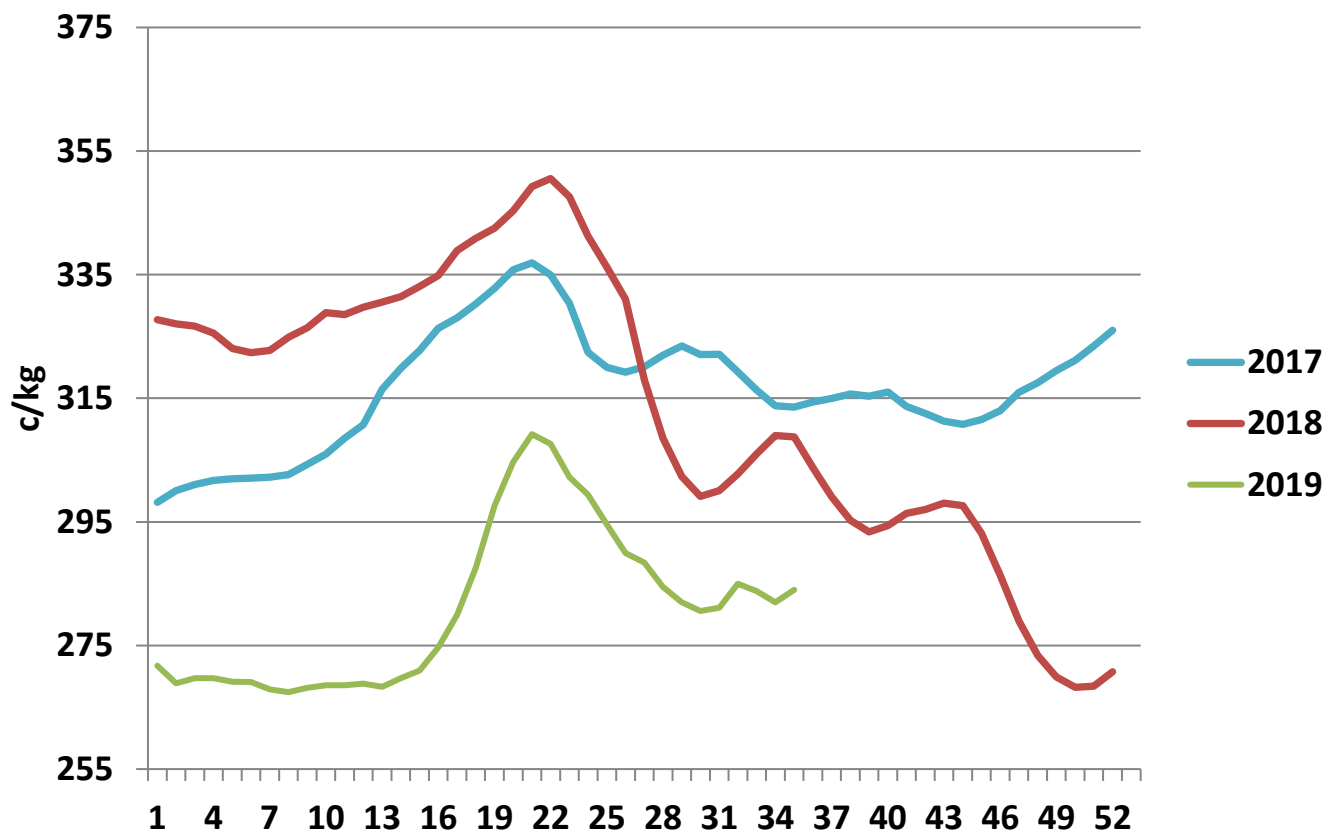
### U3 Young Bull prices ex. VAT



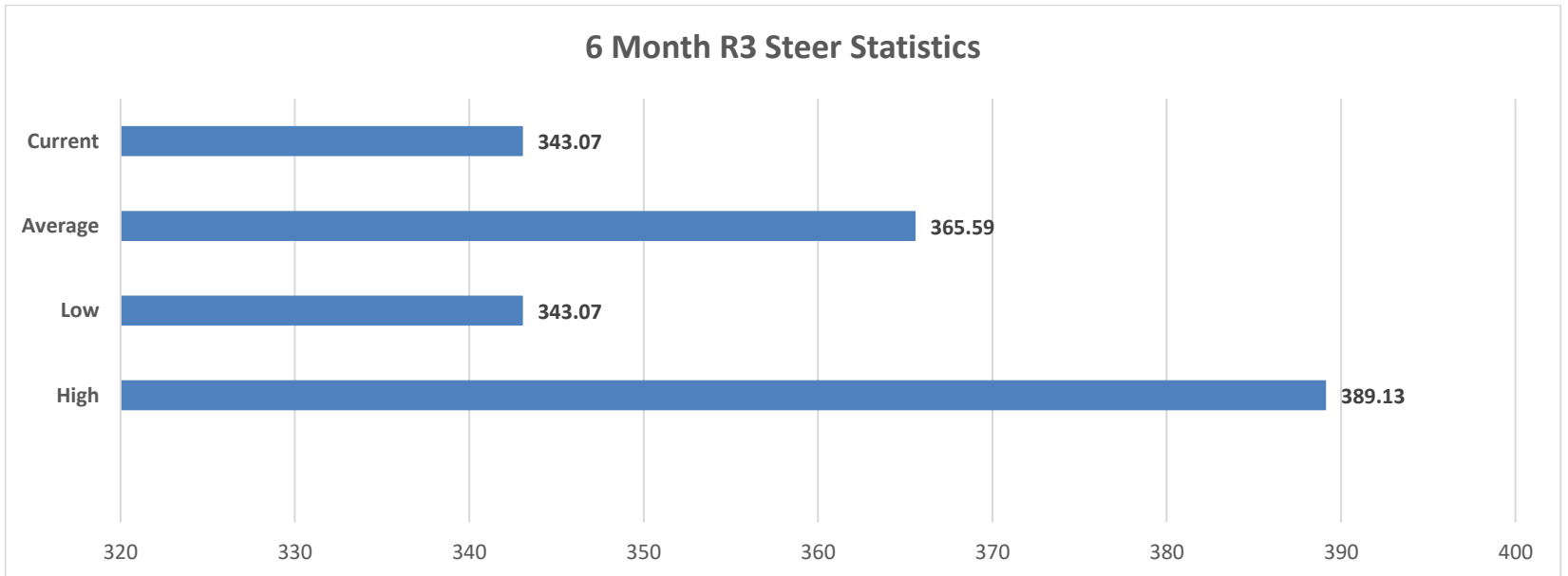
### R3 Heifer prices ex. VAT



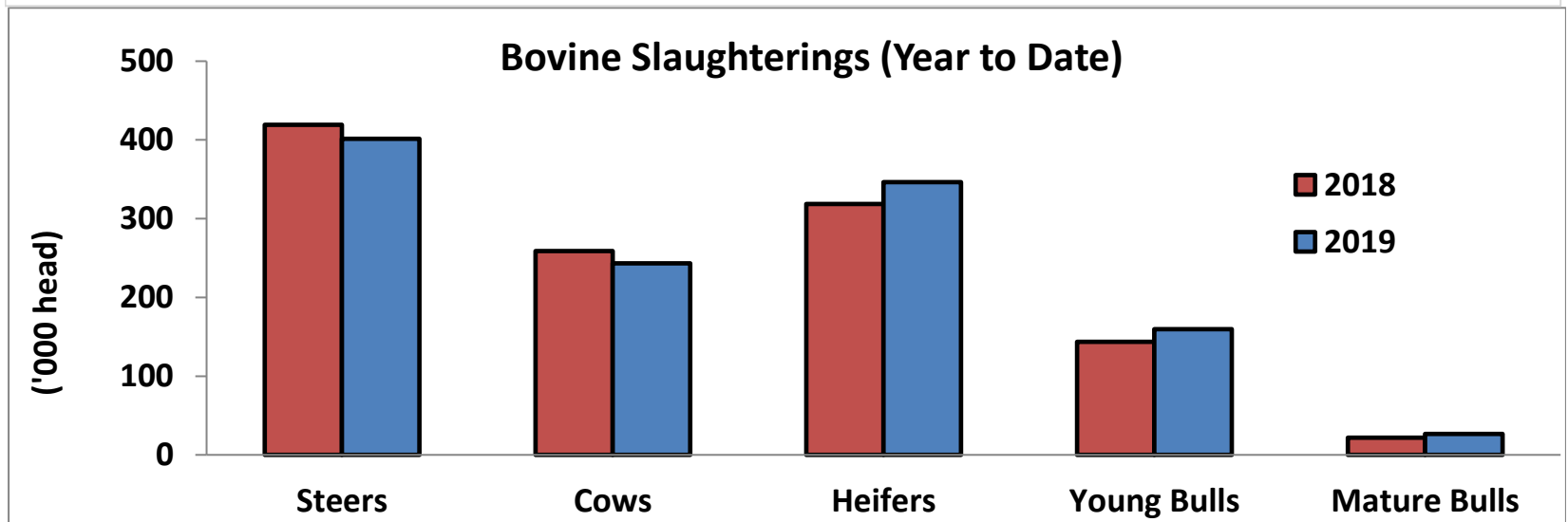
### O4 Cow prices ex. VAT



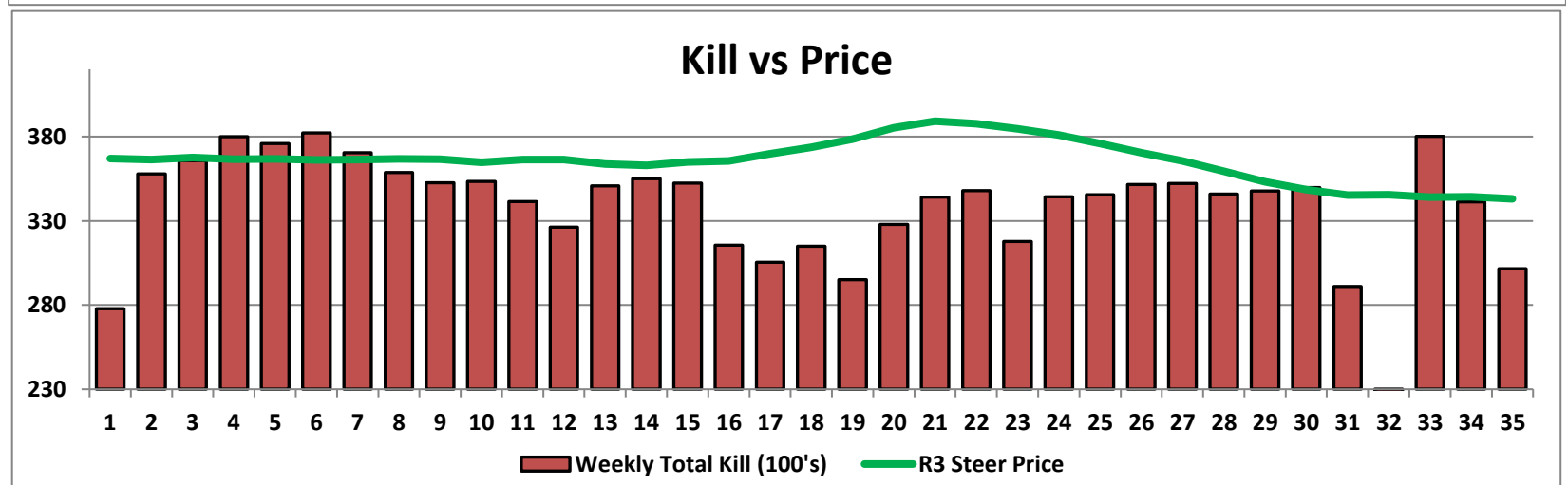
### 6 Month R3 Steer Statistics



### Bovine Slaughterings (Year to Date)

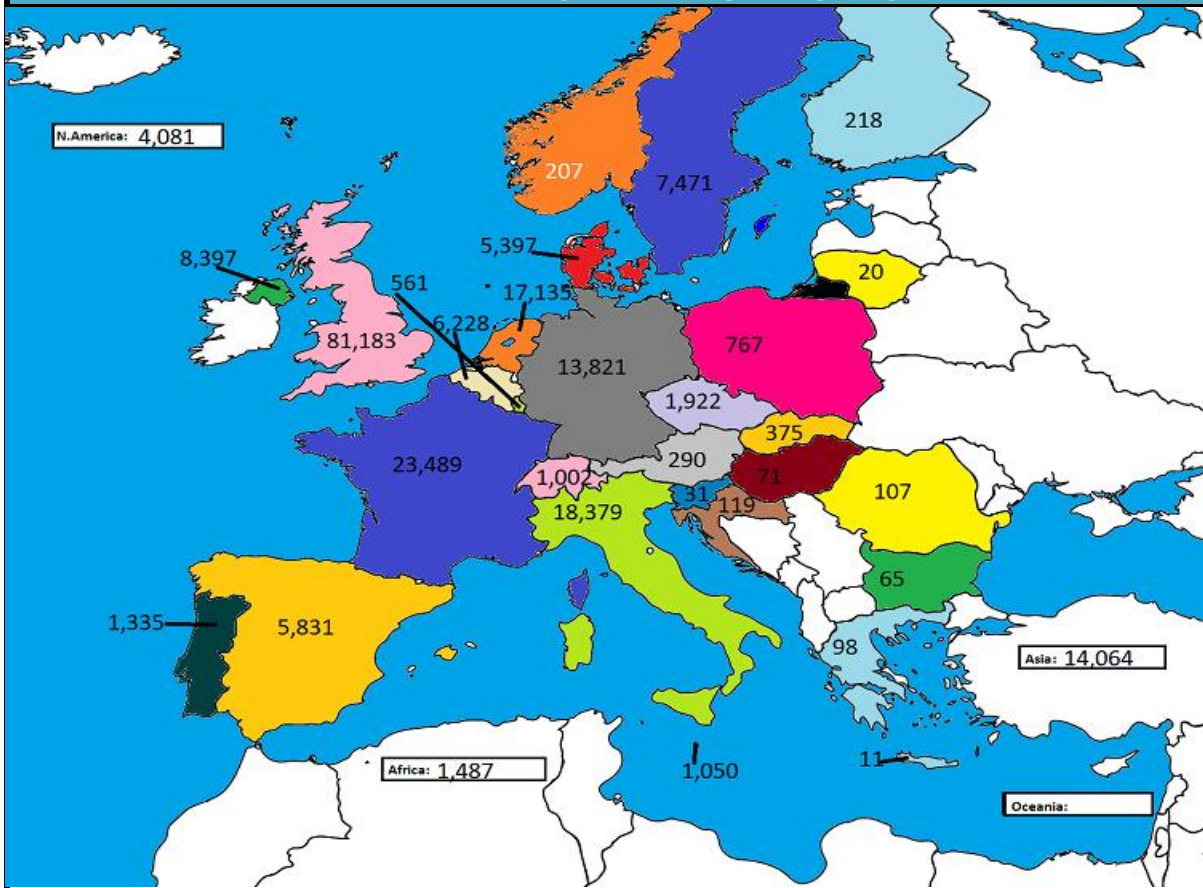


### Kill vs Price

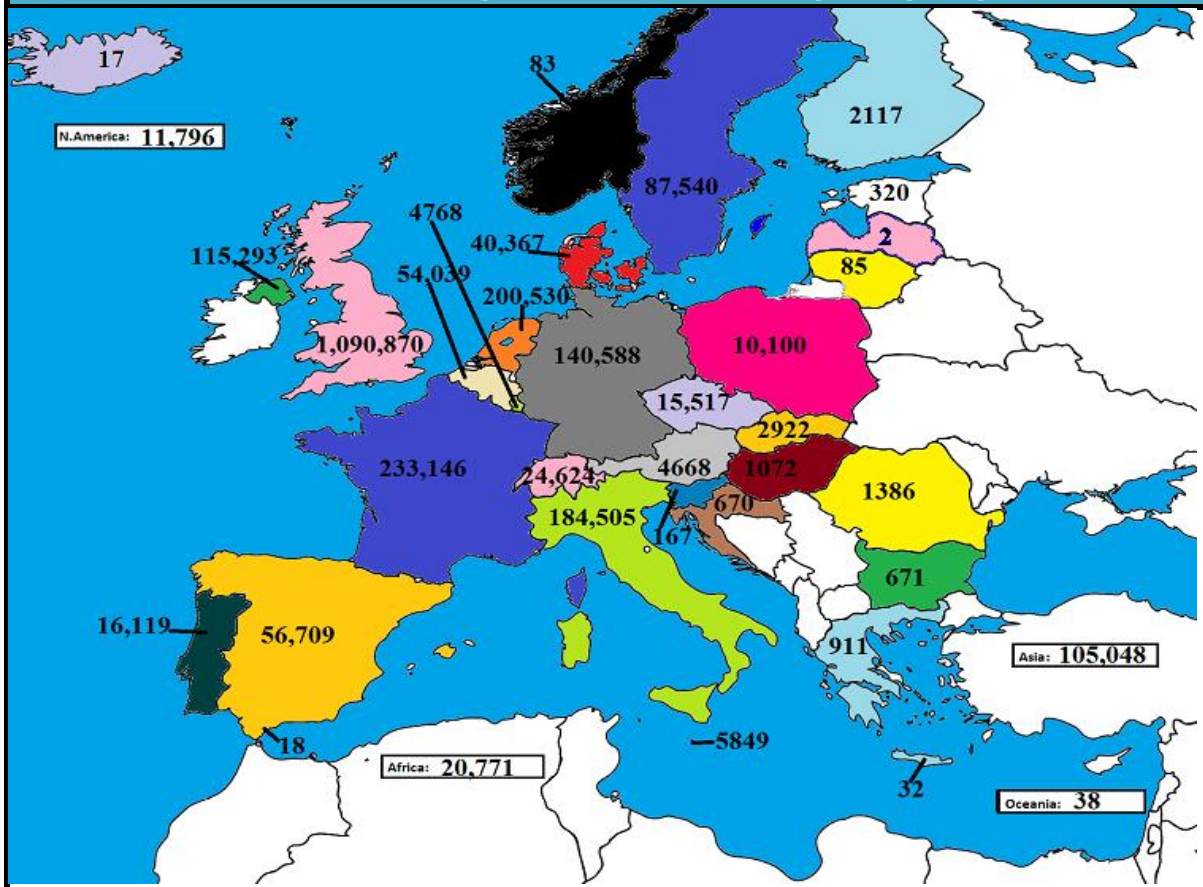




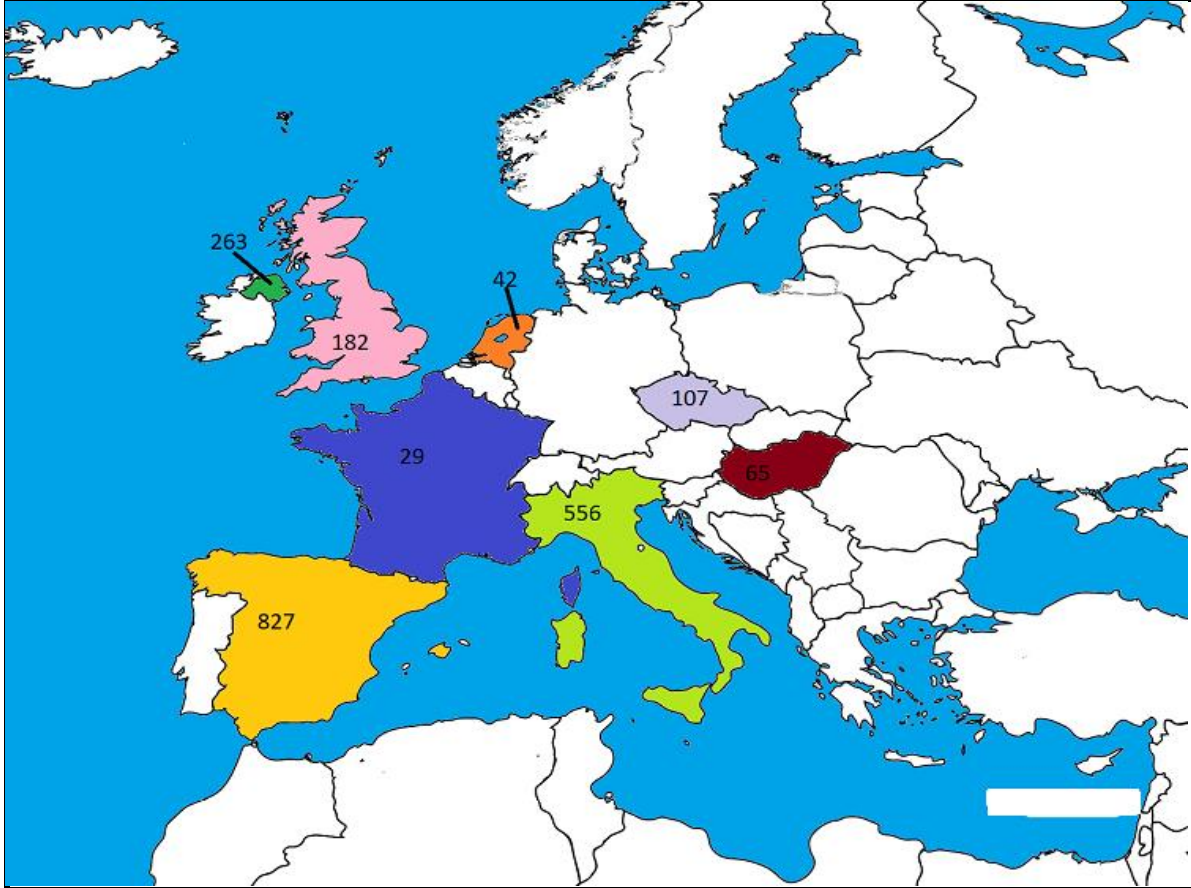
**June 2019 Beef exports, €000 (CSO figures)**



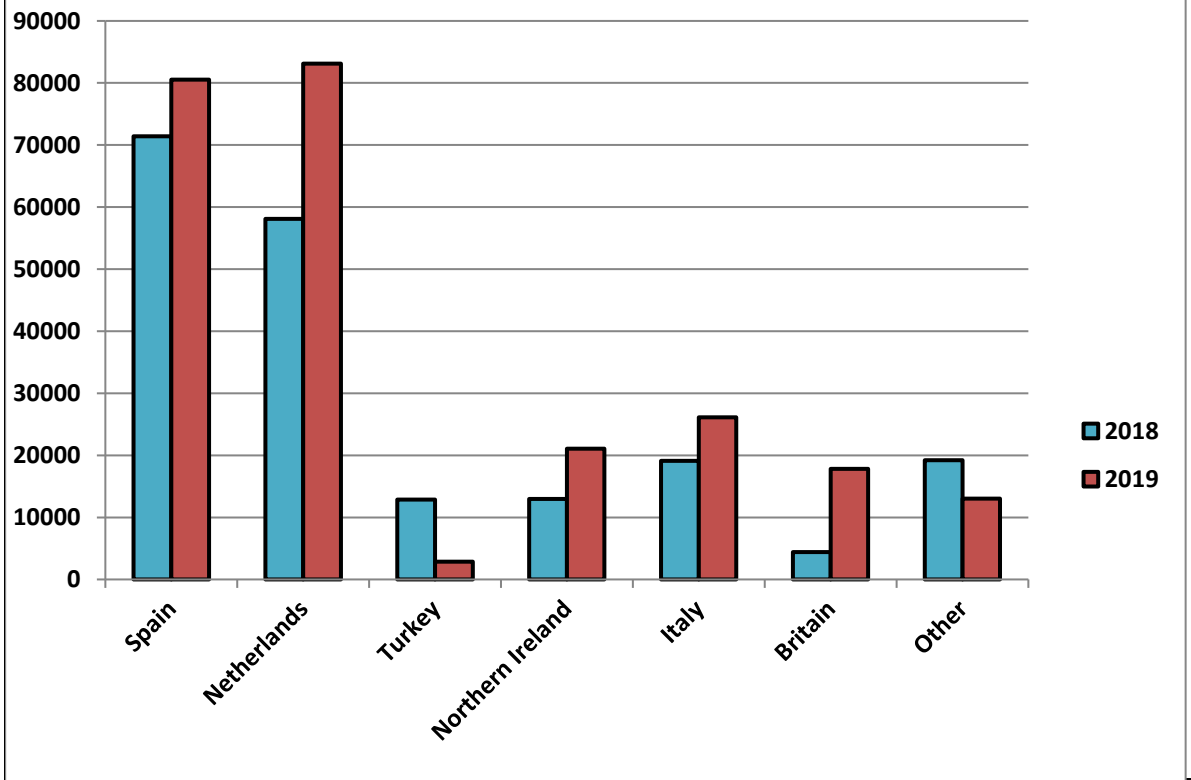
**Cumulative beef exports to Dec 2018, €000 (CSO figures)**



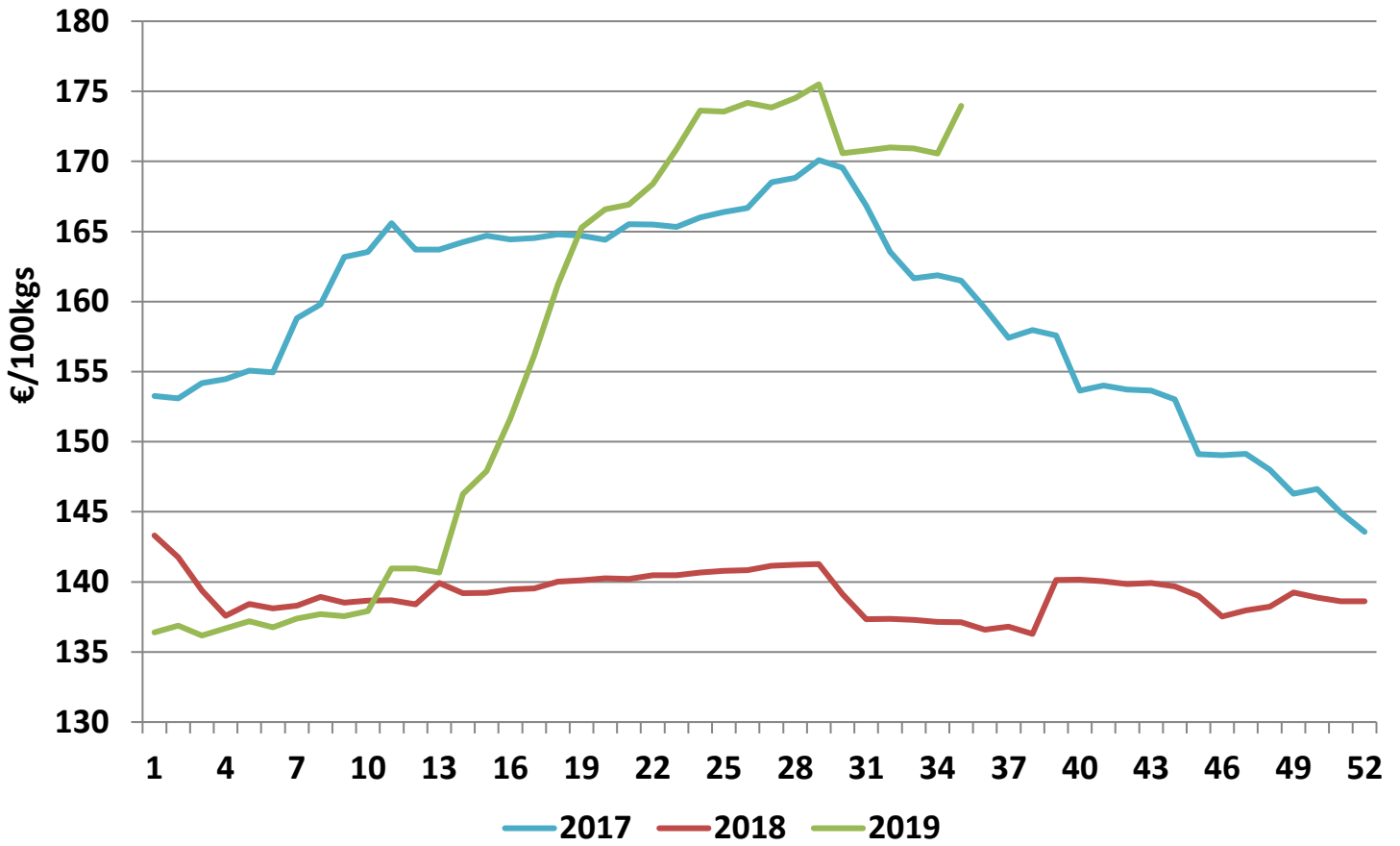
Cattle exported, w/c 26/08/19



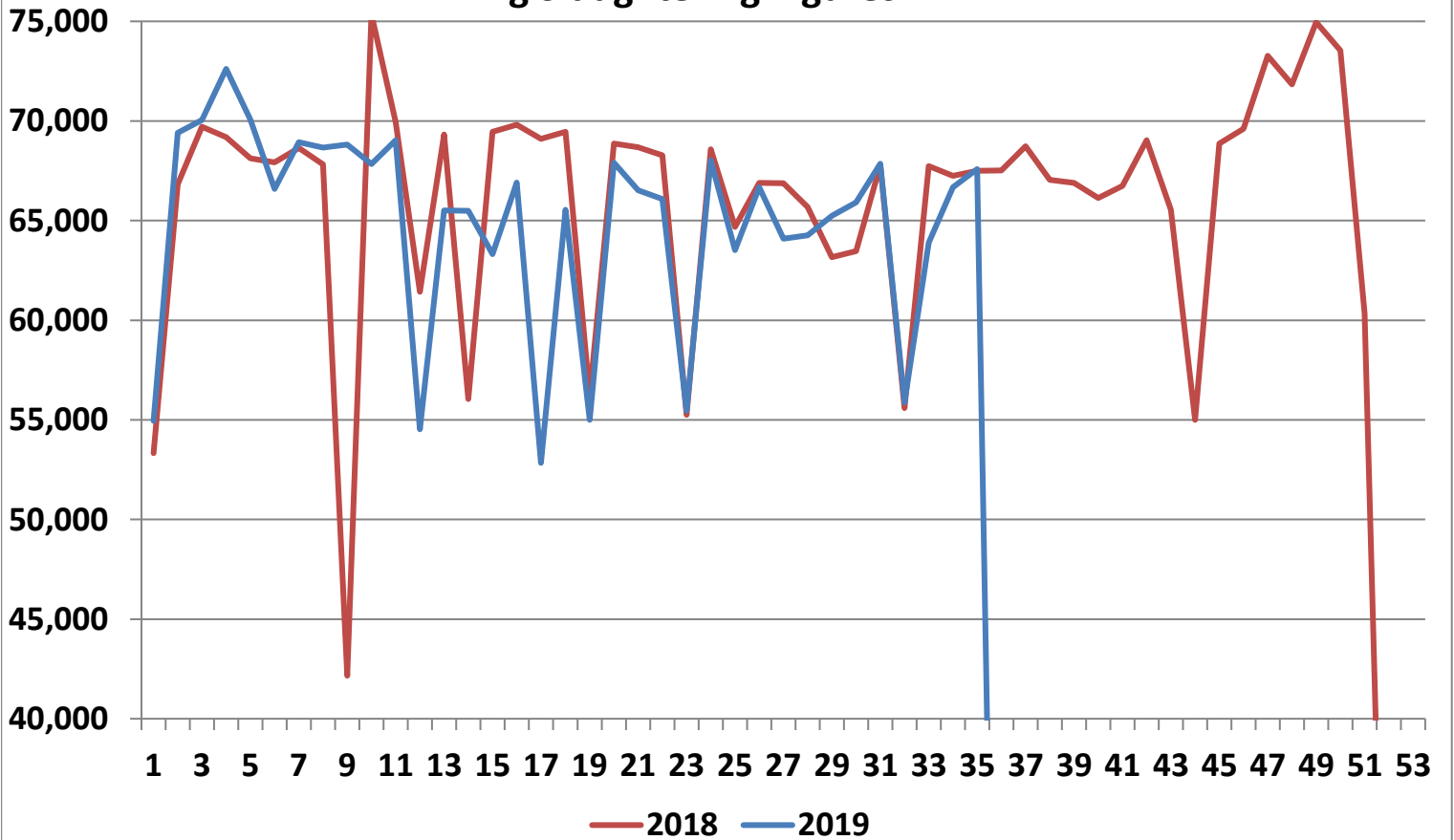
Cumulative cattle export figures, 2019



### Average Grade E Pig Price



### Pig Slaughtering Figures



**Sheepmeat Information for Week 35**

NOTE: EU PRICES  
ARE PROVISIONAL AT  
THE TIME OF  
PUBLICATION AND  
MAY NOT BE  
REFLECTIVE OF THE  
CURRENT PERIOD

Irish Prices €/100 kg	2019	2018	Change
<b>Ave Factory Price</b>	<b>431.25</b>	<b>453.96</b>	<b>-5.0%</b>
<b>Ave Mart Price</b>	<b>368.46</b>	<b>374.46</b>	<b>-1.6%</b>
<b>National Ave Price</b>	<b>412.41</b>	<b>430.11</b>	<b>-4.1%</b>
<b>YTD Ave</b>	<b>476.89</b>	<b>506.38</b>	<b>-5.8%</b>

EU Market Rates Heavy Lambs	€/100kg	% of Commu Price
Belgium	483.5	104%
Denmark	512.7	111%
Germany	493.6	107%
Spain	501.8	108%
France	609.0	131%
Croatia	530.4	114%
Ireland	412.4	89%
Italy	576.0	124%
Cyprus	517.0	112%
Latvia	400.0	86%
Lithuania	411.0	89%
Netherlands	529.1	114%
Austria	548.0	118%
Poland	433.7	94%
Romania	180.0	39%
Finland	409.6	88%
Sweden	436.2	94%
Northern Ireland	376.4	81%
Great Britain	432.7	93%
United Kingdom	428.7	92%
Community	463.5	100%

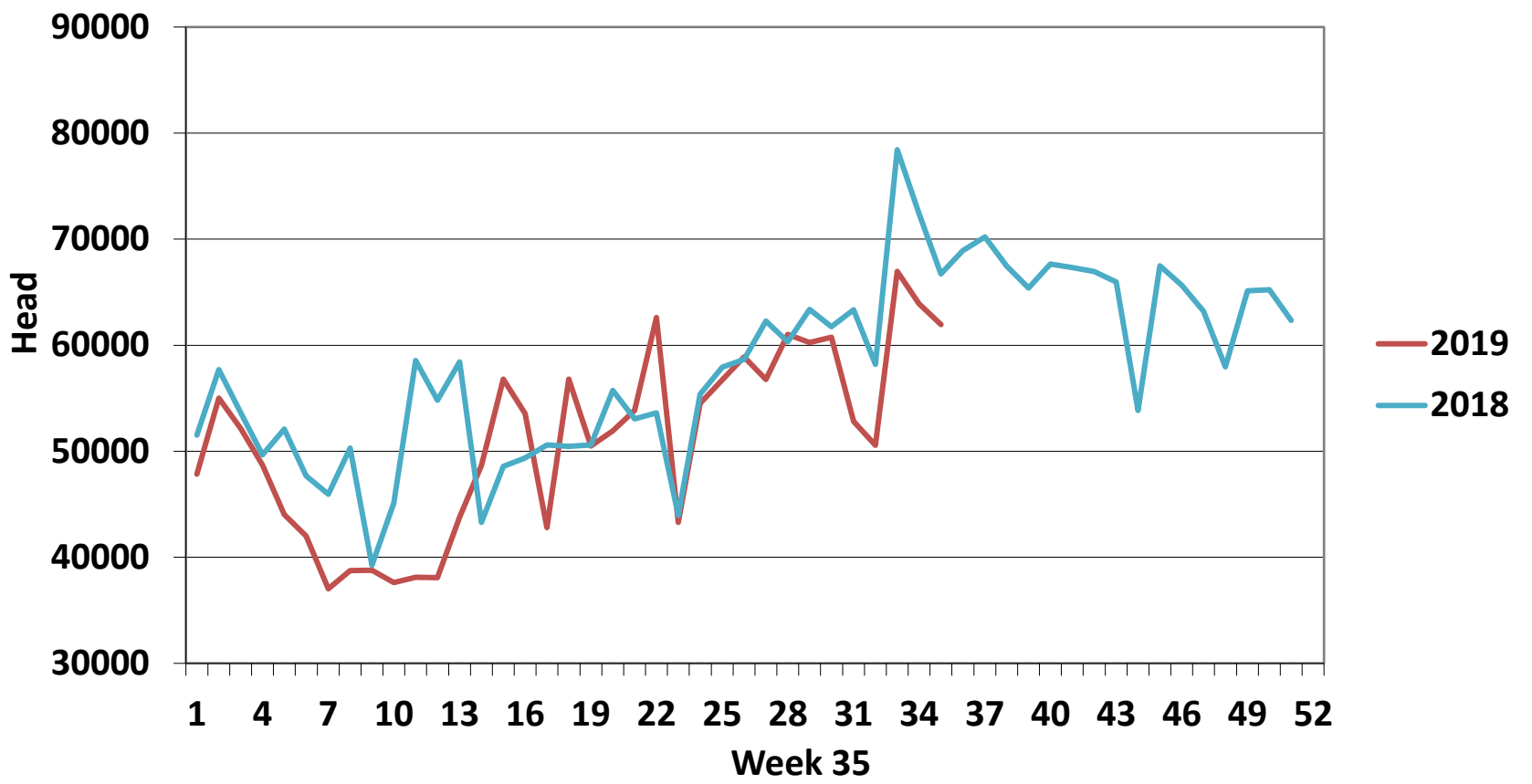
Slaughterings	2019	2018	Change
<b>Weekly</b>	<b>61,942</b>	<b>66,720</b>	<b>-7%</b>
<b>YTD</b>	<b>1,787,787</b>	<b>1,922,706</b>	<b>-7%</b>

**REPORT ON SLAUGHTERING AT SHEEP EXPORT PREMISES  
WEEK 35**

CATEGORY	2019		2018		DIFFERENCE	
	Weekly	Cumulative	Weekly	Cumulative	Weekly	Cumulative
Lambs/Hoggets	126	737,590	70	828,410	56	90,820
Spring Lambs	52,695	789,051	54,521	773,864	-1,556	15,187
Ewes and Rams	9,121	260,785	12,399	320,304	-3,278	59,519
Light Lambs		361		128	0	233
<b>TOTAL</b>	<b>61,942</b>	<b>1,787,787</b>	<b>66,720</b>	<b>1,922,706</b>	<b>-4,778</b>	<b>-134,919</b>



### Weekly Sheep Slaughtering



### Ave. Price €/100 kg for Sheepmeat

