

Meat Market Report

09/09/19 - 15/09/19

Week

37



**An Roinn Talmhaíochta,
Bia agus Mara**

Department of Agriculture,
Food and the Marine

MARKET SUMMARY

Beef

Deadweight Prices c/100Kg (Including VAT)

	U3	U4	R3	R4	O3	O4	P+3
Steers	369.4	366.3	362.4	359.8	343.8	341.3	320.7
Heifers	383.3	378.9	371.4	369.4	361.8	354.3	320.8
Young Bulls	356.1	356.2	347.8	342.5	321.9	335.0	302.9
Cows			321.2	319.6	298.3	299.4	286.5

Liveweight Prices

*Bull Calf Average Price	€183.3 per head (Excluding VAT)
**Young Store Average Price	€208.0 per 100kg (Excluding VAT)
***Yearling (male & female) Price	€184.0 per 100kg (Excluding VAT)

* Aged 8-28 days ** Aged 180-364 days, Male & Female ***age 365-730 days

Slaughterings

11,660 cattle slaughtered this week, of which steers were 5,183 (44%), heifers 2,754 (24%), young bulls 705 (6%) and cows 2,686 (23%). Total YTD slaughter is 1,210,884, compared to 1,238,344 in 2018, a 2.2% decrease.

Live Trade

1,413 cattle were exported in the week commencing 02/09/2019, 1,070 to EU (Except NI). Live exports for 2019 amount to 244,028 compared to 203,922 in 2018, up 20% on 2018 levels.

*This data is provisional and subject to revision.

The next meeting of the Management Committee for the Common Organisation of Agricultural Markets (Animal Products Sector) is 19th September 2019

CONTENTS:

Page 2: Market Summary Beef
 Page 3: Market Summary Other Meats
 Page 4: Beef Price and Slaughter Summary
 Page 5: Comparative Beef Prices
 Page 6: Steer and Young Bull Price
 Page 7: Heifer and Cow Graphs
 Page 8: Price and Slaughter Graphs
 Page 9: Liveweight Beef Graphs

Page 10: Beef Export Maps
 Page 11: Beef Export Info
 Page 12: Pig price and slaughter graphs
 Page 13: Sheep prices and slaughter
 Page 15: Sheep price and slaughter graphs

MARKET SUMMARY

Pigmeat

Grade E Pig
Prices (Ex.
VAT)

The Grade E Pig price for week commencing 09/09/2019 was €174.21 per 100Kg compared to €136.80 in the same week last year, which represents a 27% increase.

Slaughtering

66,039 pigs were slaughtered in week 37 of which 1,697 were sows. The cumulative figure for pig slaughterings in 2019 is 2,404,738 which is a 0.1% decrease with the same point last year.

Sheepmeat

Sheepmeat
Prices (Ex.
VAT)

The national average price for the week commencing 09/09/2019 was €255.23 per 100Kg, a decrease of 39.7% over the same week last year. Please note that this price is based on the reported price from only one plant this week.

Slaughtering

45,700 sheep were slaughtered at sheep export premises the week commencing 09/09/2019, compared to 70,219 in the same week of 2018. Sheep slaughterings for 2019 are 9% down on 2018 at 1,880,382 head.

Live Trade

Total live exports to European Countries stood at 6,227 head to the end of August 2019.

Poultry

Slaughtering

Cumulative poultry slaughterings for 2019* stand at 75,211,236 birds at the end of week 37, up 7% compared to the same period last year.

*Latest Figures are provisional and subject to change

Dead Weight Prices	W/C	W/C	Same week 2018	% change prev week	% change 2018
	09/09/19	02/09/19	10/09/18		
Steers (R3) (c/kg)	343.8	342.9	373.6	0.3%	-8.0%
Heifers (R3) (c/kg)	352.3	352.7	384.1	-0.1%	-8.3%
Young Bulls (U3) (c/kg)	337.9	335.0	378.6	0.9%	-10.8%
Cows (04) (c/kg)	284.0	282.2	299.1	0.6%	-5.0%

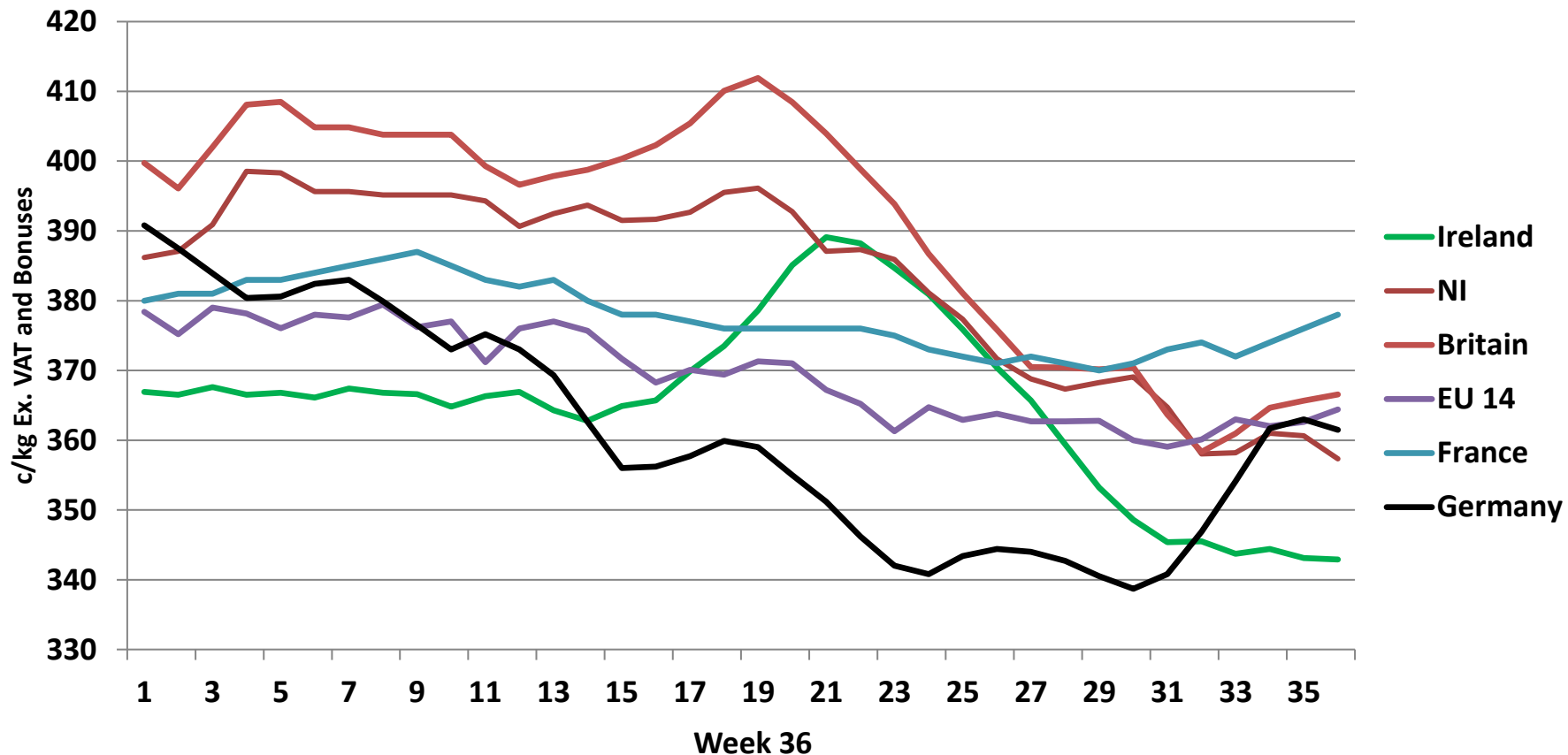
Live Weight Prices	W/C	W/C	Same week 2018	% change previous week	% change 2018
	09/09/19	02/09/19	10/09/18		
Yearlings (Male) (Aged 365 - 730 days) - (€/100Kg)	186	181	182	2.8%	2.2%
Yearlings (Female) (Aged 365 - 730 days) - (€/100Kg)	182	188	188	-3.2%	-3.2%
Young Stores (Male & Female) (Aged 180 - 364 days) - (€/100Kg)	208	211	219	-1.4%	-5.0%
Bull Calf (€/head) Dairy	137.0	136.0	112.9	0.7%	21.3%
Bull Calf (€/head) Beef	229.6	195.3	198.5	17.6%	15.7%
Bull Calf (€/head) Average	183.3	165.6	155.7	10.6%	17.7%

Slaughter Figures	% of weekly figures	W/C	Same week 2018	Year to Date		Change 2019 v 2018	
		09-Sep-19		2019	2018	Head	%
Steers	44.5%	5,183	16,387	416,722	453,222	-36,500	-8.1%
Cows	23.0%	2,686	8,161	249,532	275,219	-25,687	-9.3%
Heifers	23.6%	2,754	10,105	355,247	338,078	17,169	5.1%
Young Bulls	6.0%	705	2,007	162,144	148,683	13,461	9.1%
Mature Bulls	2.8%	332	525	27,239	23,142	4,097	17.7%
Total	100%	11,660	37,185	1,210,884	1,238,344	-27,460	-2.2%

821

Live Exports	W/C	Same week	W/C	Year to Date		Change 2019 v 2018	
	2-Sep-19	2018	26-Aug-19	2019	2018	Head	%
Northern Ireland	343	1,008	263	21,630	12,203	9,427	77%
EU Except NI	1,070	2,081	1,808	214,321	173,728	40,593	23%
Third Countries	0	199	0	8,077	17,991	-9,914	-
Total	1,413	3,288	2,071	244,028	203,922	40,106	20%
Calves YTD:		191,605		Adult YTD:Cattle		52,294	

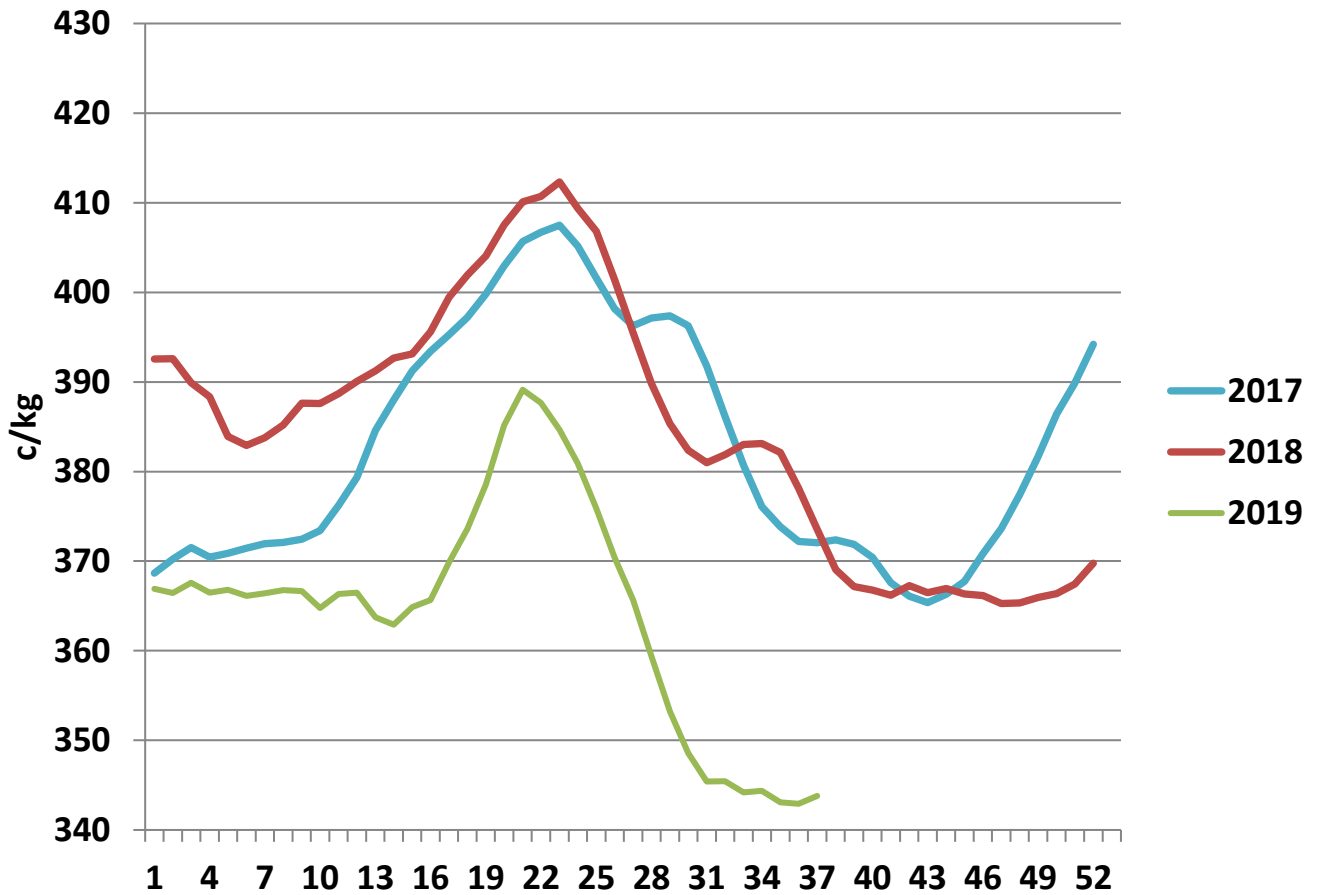
Irish Deadweight Cattle Prices vs Selected Other Markets, 2019



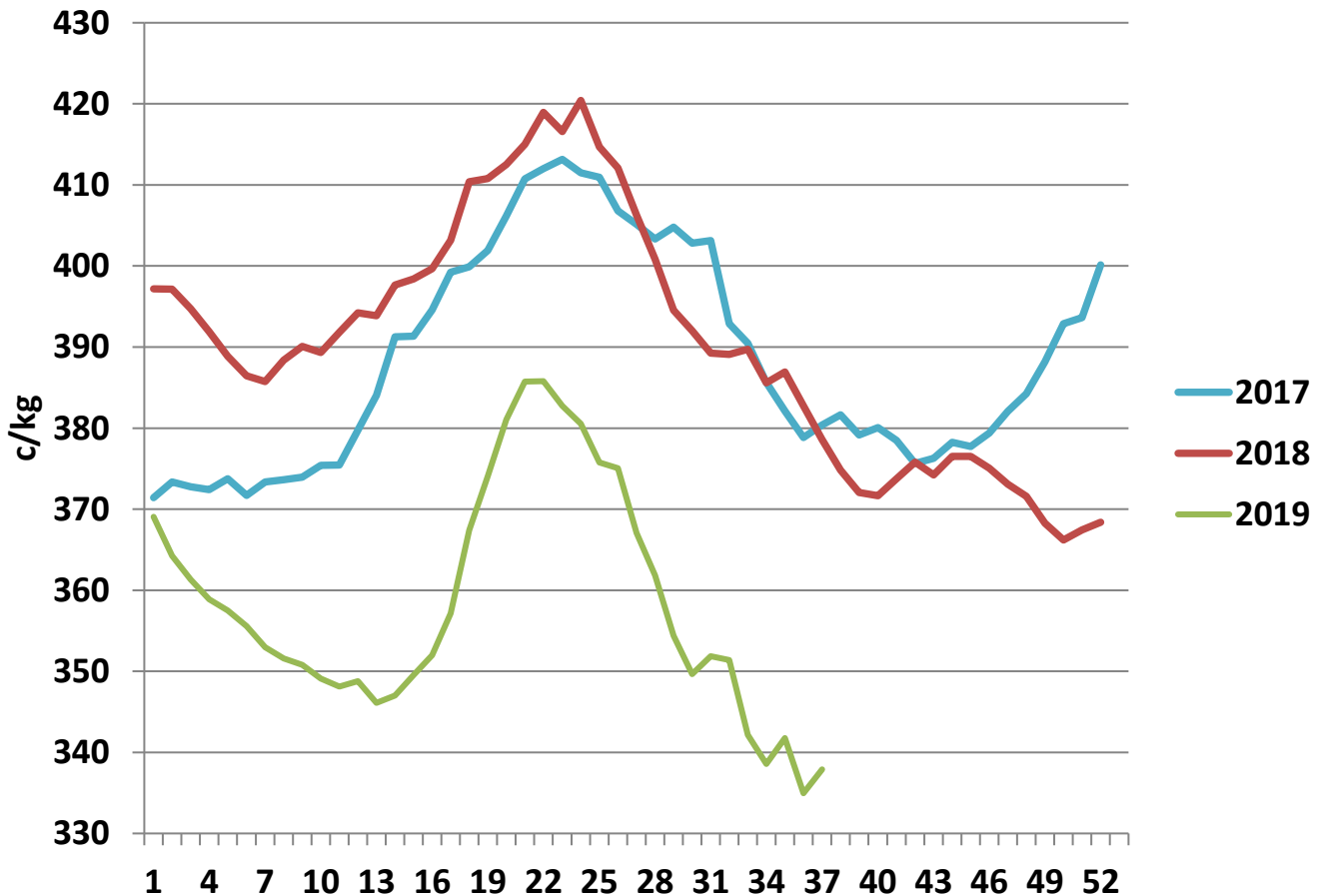
Livestock Pricing

	Ireland	NI	Britain	EU 14 Average	France	Germany
W/C 02/09/19	342.9	357.33	366.57	364.4	378	361.5

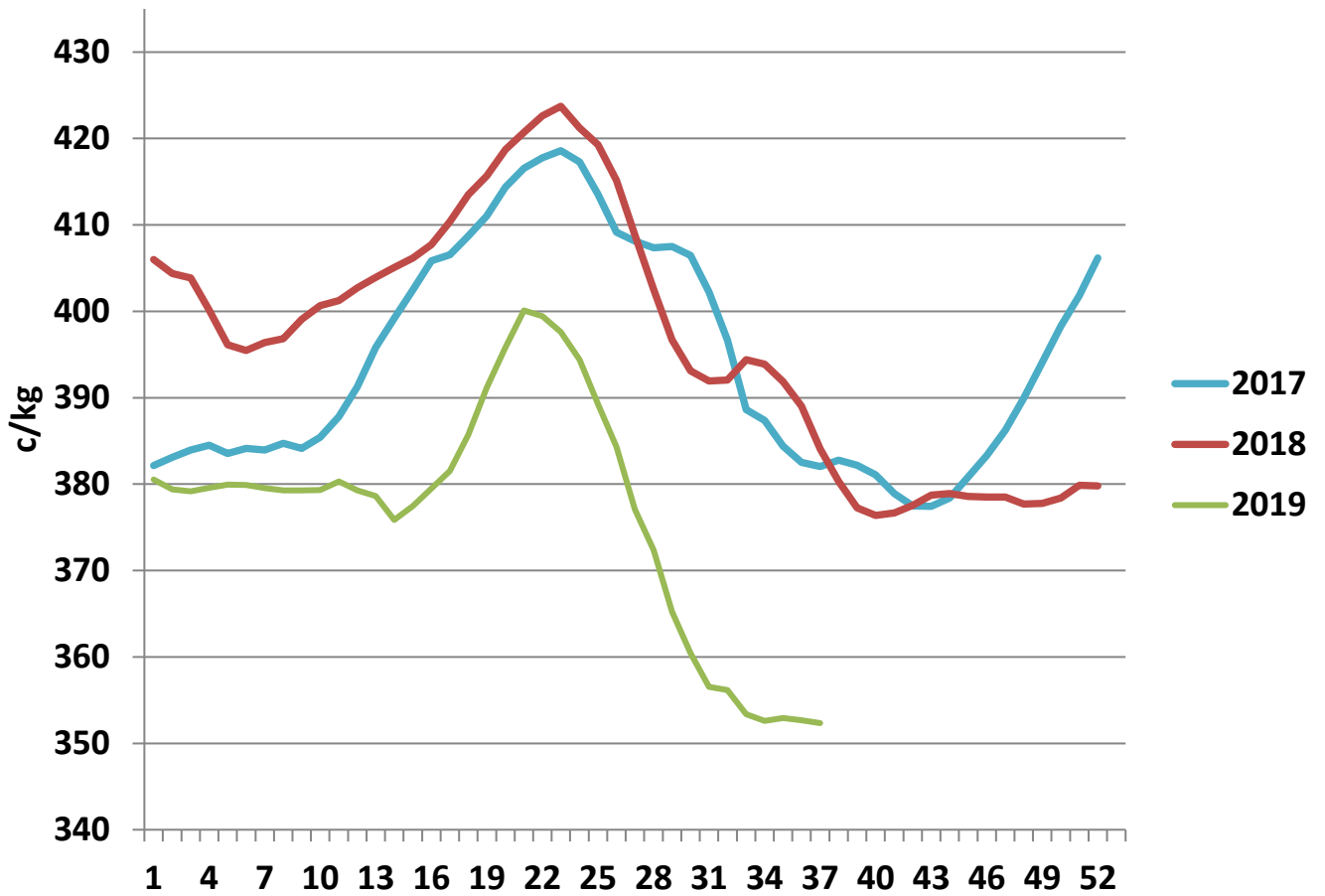
R3 Steer prices ex. VAT



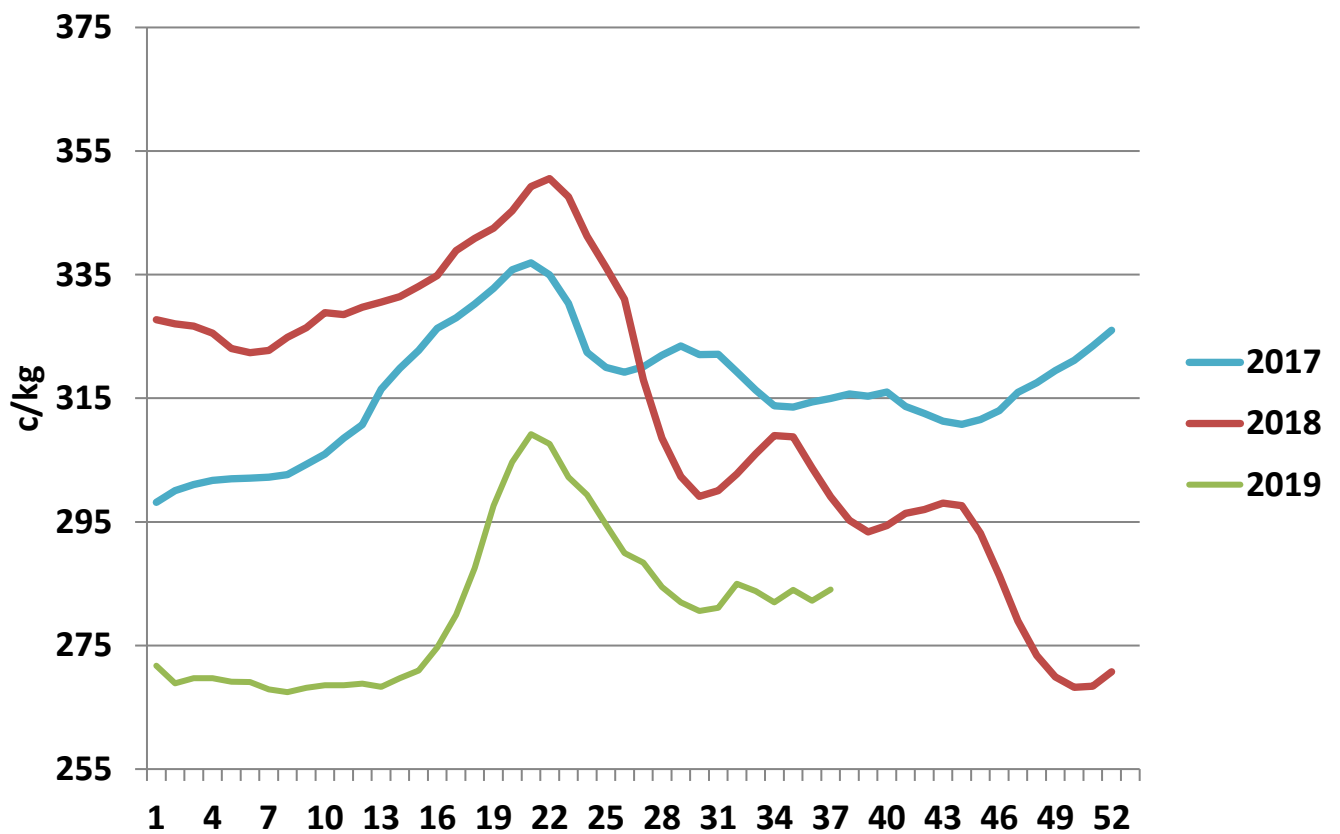
U3 Young Bull prices ex. VAT



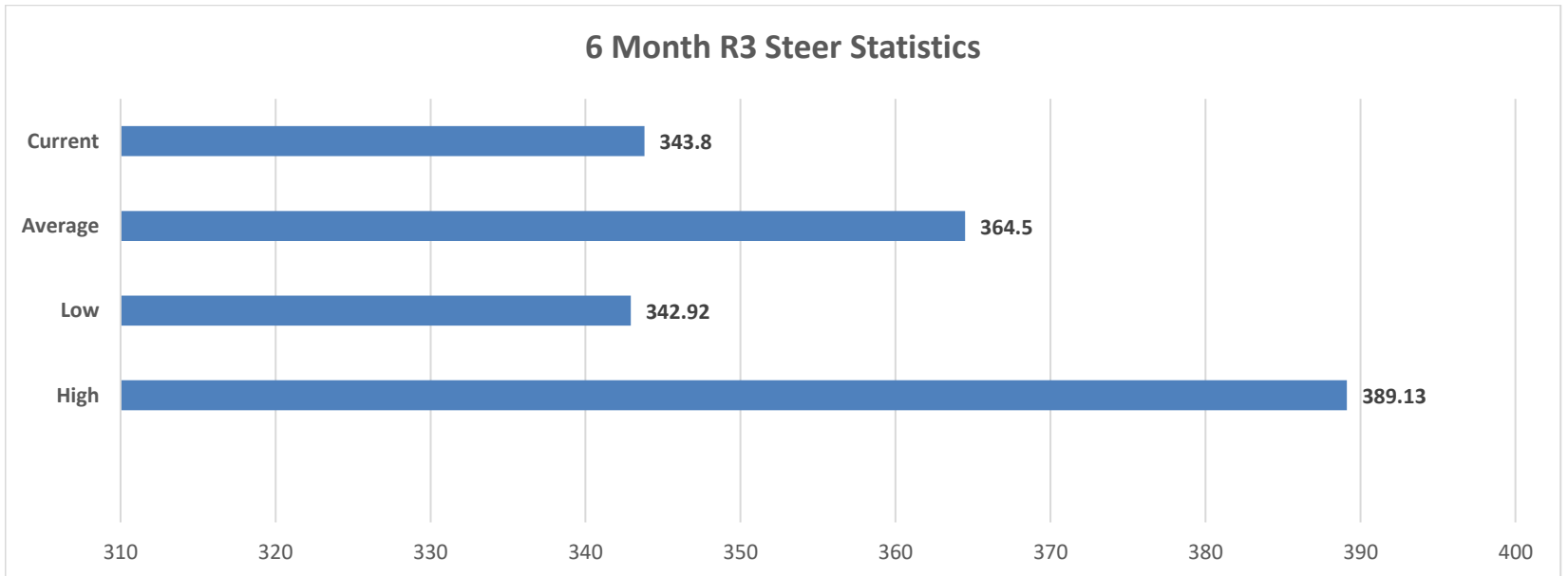
R3 Heifer prices ex. VAT



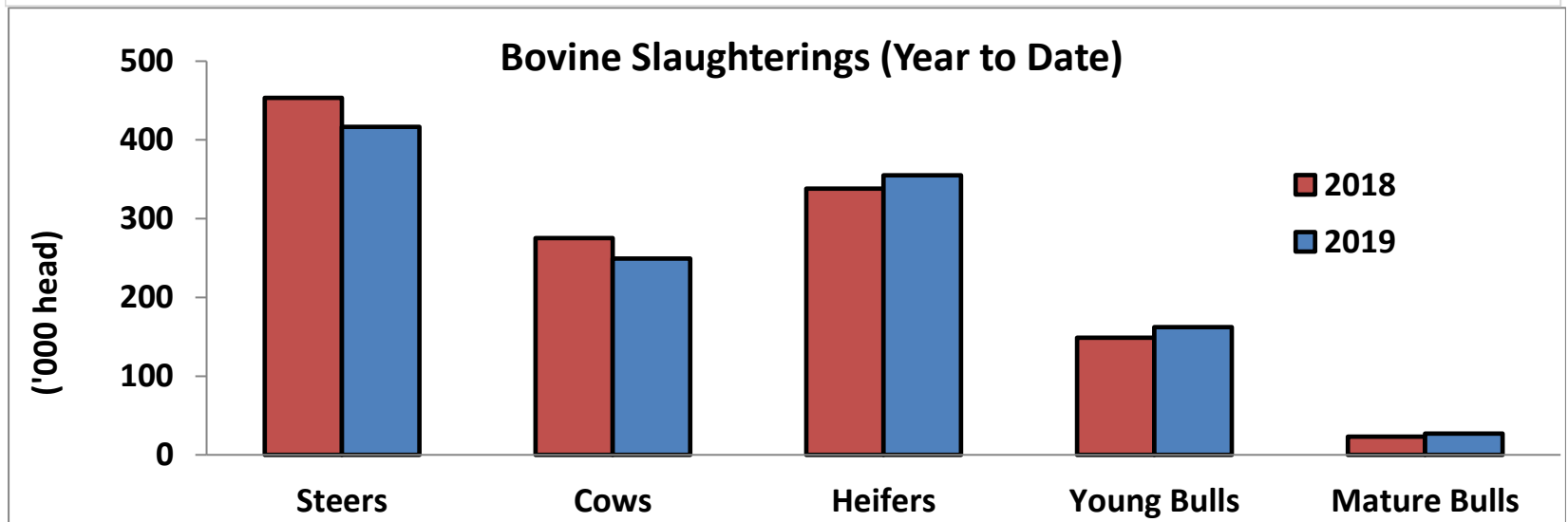
O4 Cow prices ex. VAT



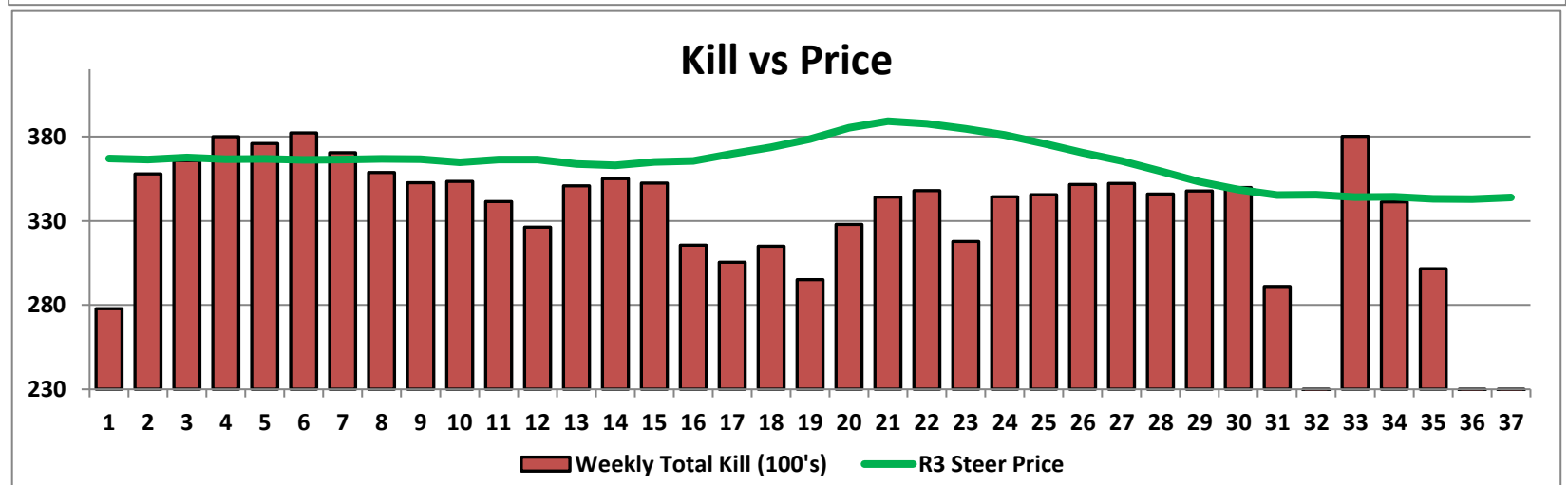
6 Month R3 Steer Statistics



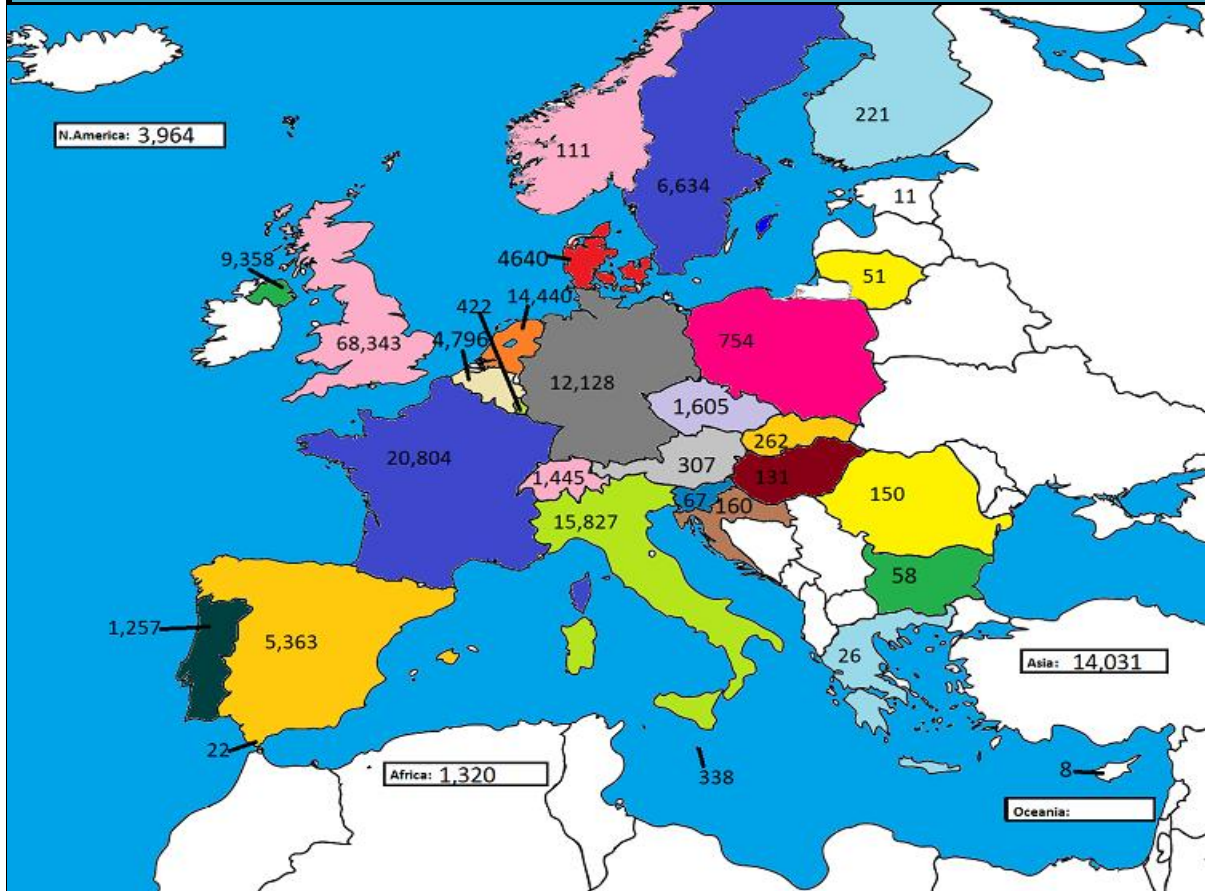
Bovine Slaughterings (Year to Date)



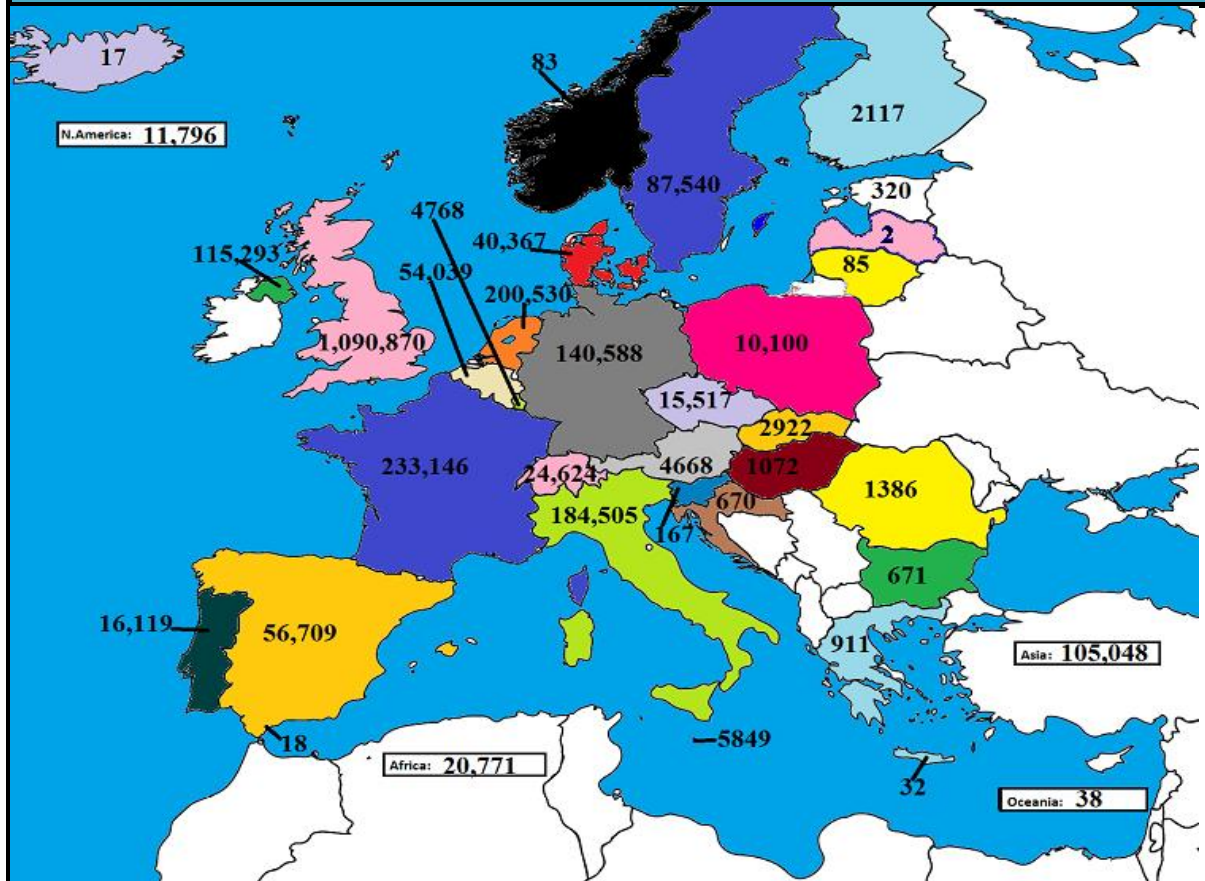
Kill vs Price



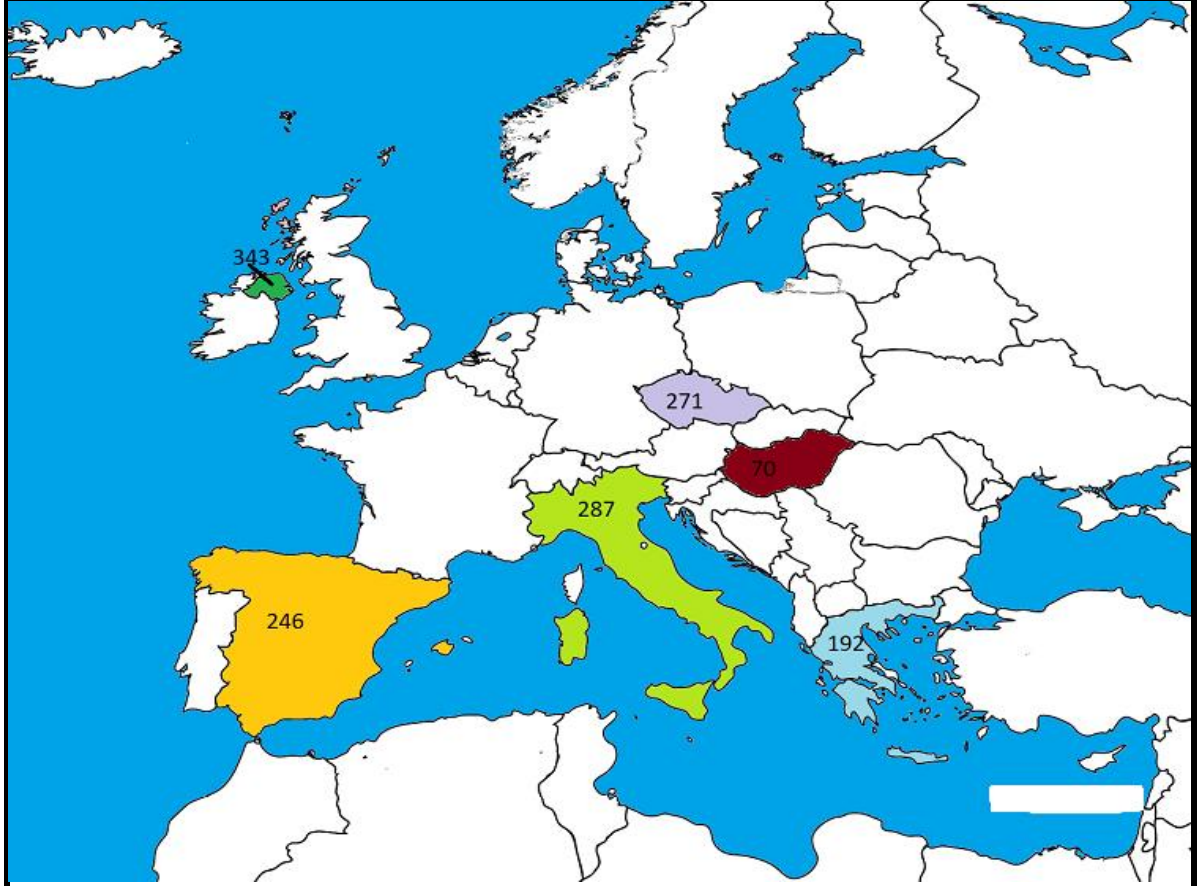
July 2019 Beef exports, €000 (CSO figures)



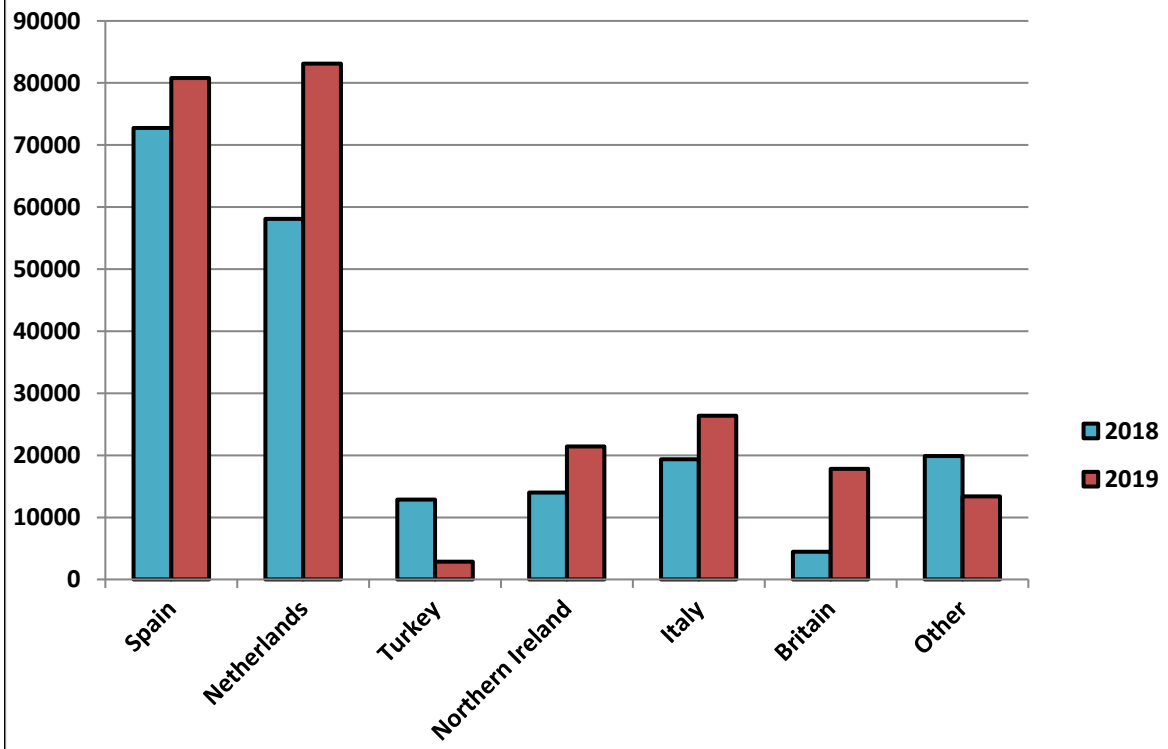
Cumulative beef exports to Dec 2018, €000 (CSO figures)



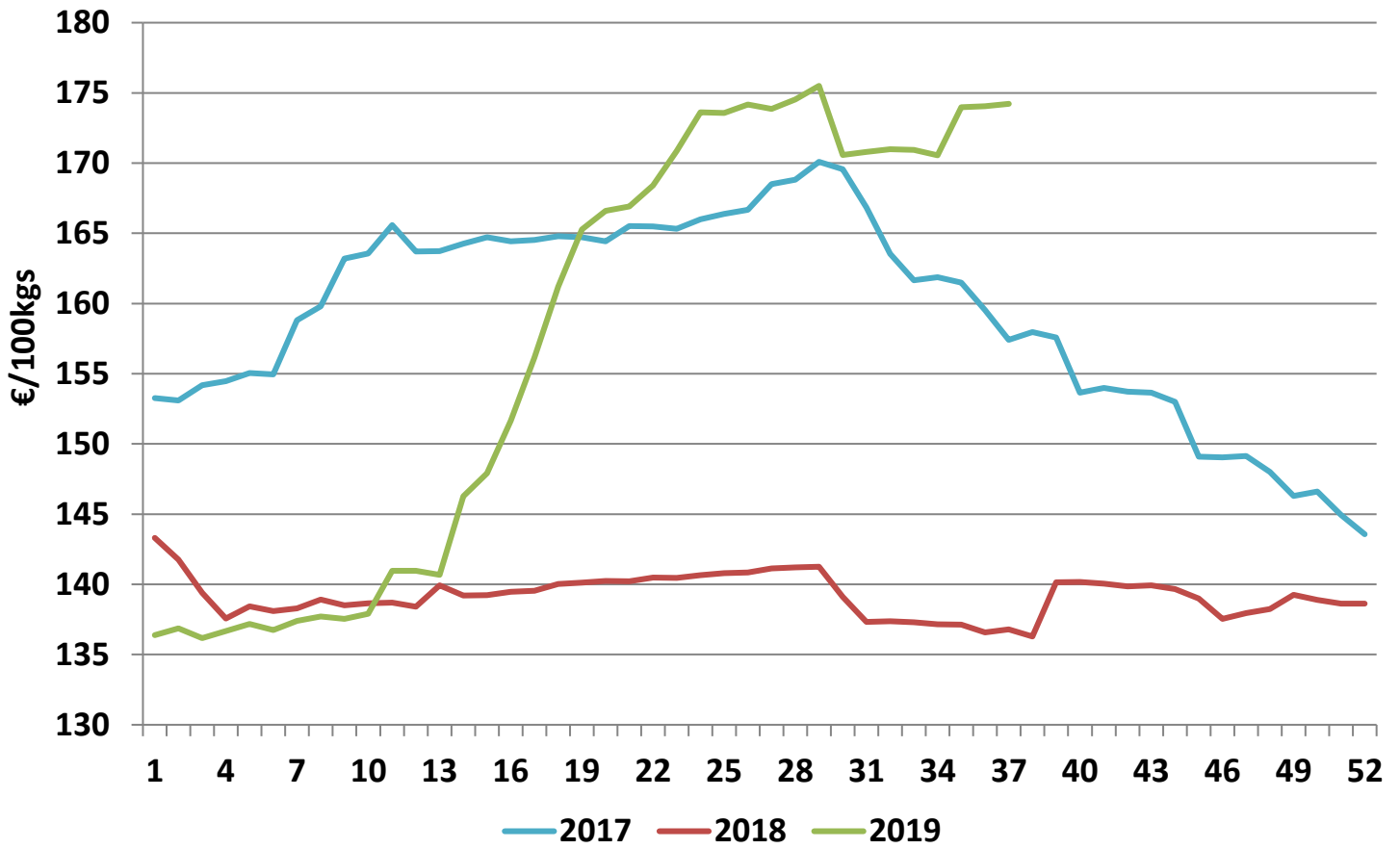
Cattle exported, w/c 02/09/19



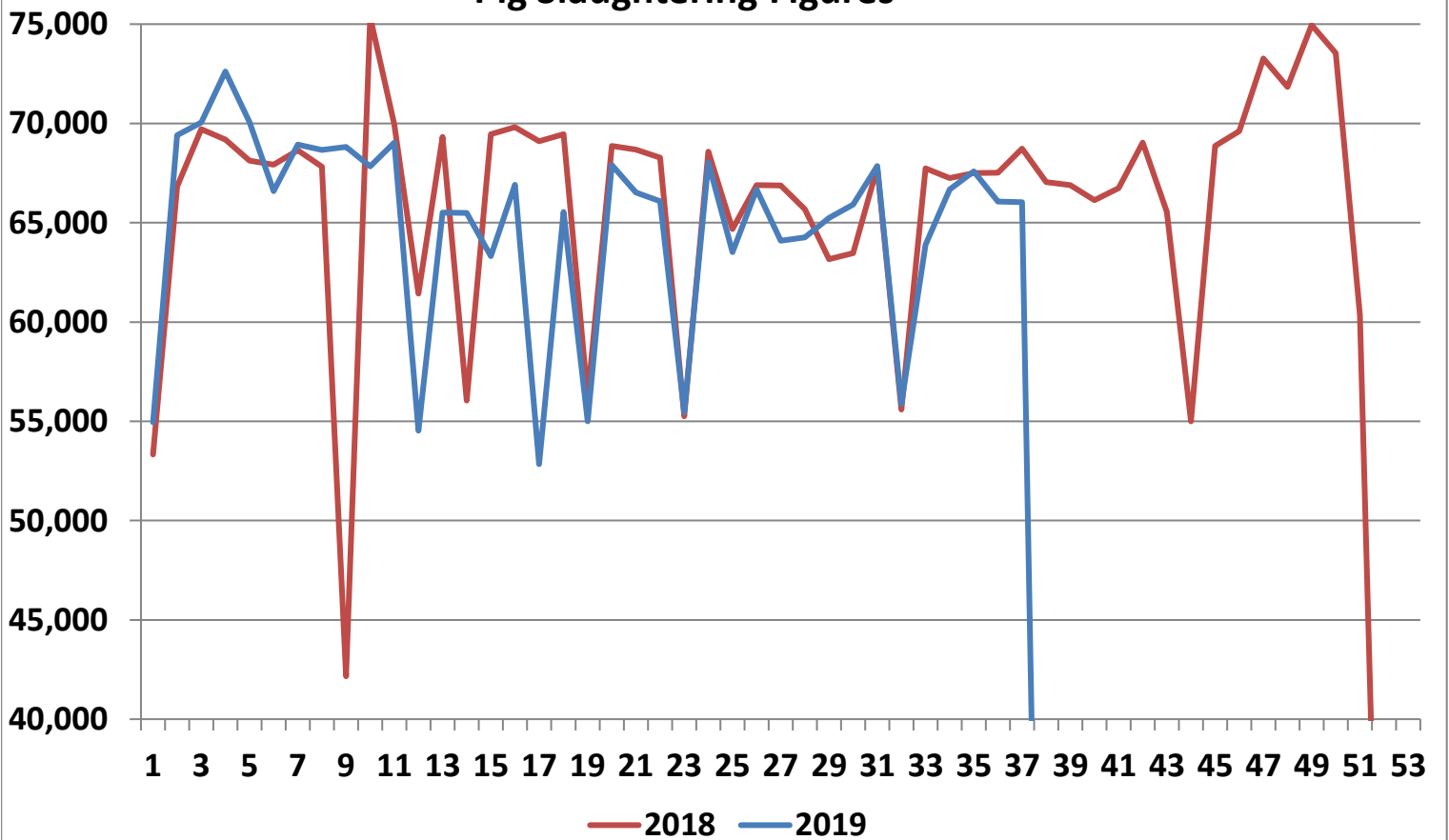
Cumulative cattle export figures, 2019



Average Grade E Pig Price



Pig Slaughtering Figures



Sheepmeat Information for Week 37

NOTE: EU PRICES
ARE PROVISIONAL AT
THE TIME OF
PUBLICATION AND
MAY NOT BE
REFLECTIVE OF THE
CURRENT PERIOD

Irish Prices €/100 kg	2019	2018	Change
Ave Factory Price	427.10	446.97	-4.4%
Ave Mart Price	376.35	367.43	2.4%
National Ave Price	411.87	423.1	-2.7%
YTD Ave	473.54	502.05	-5.7%

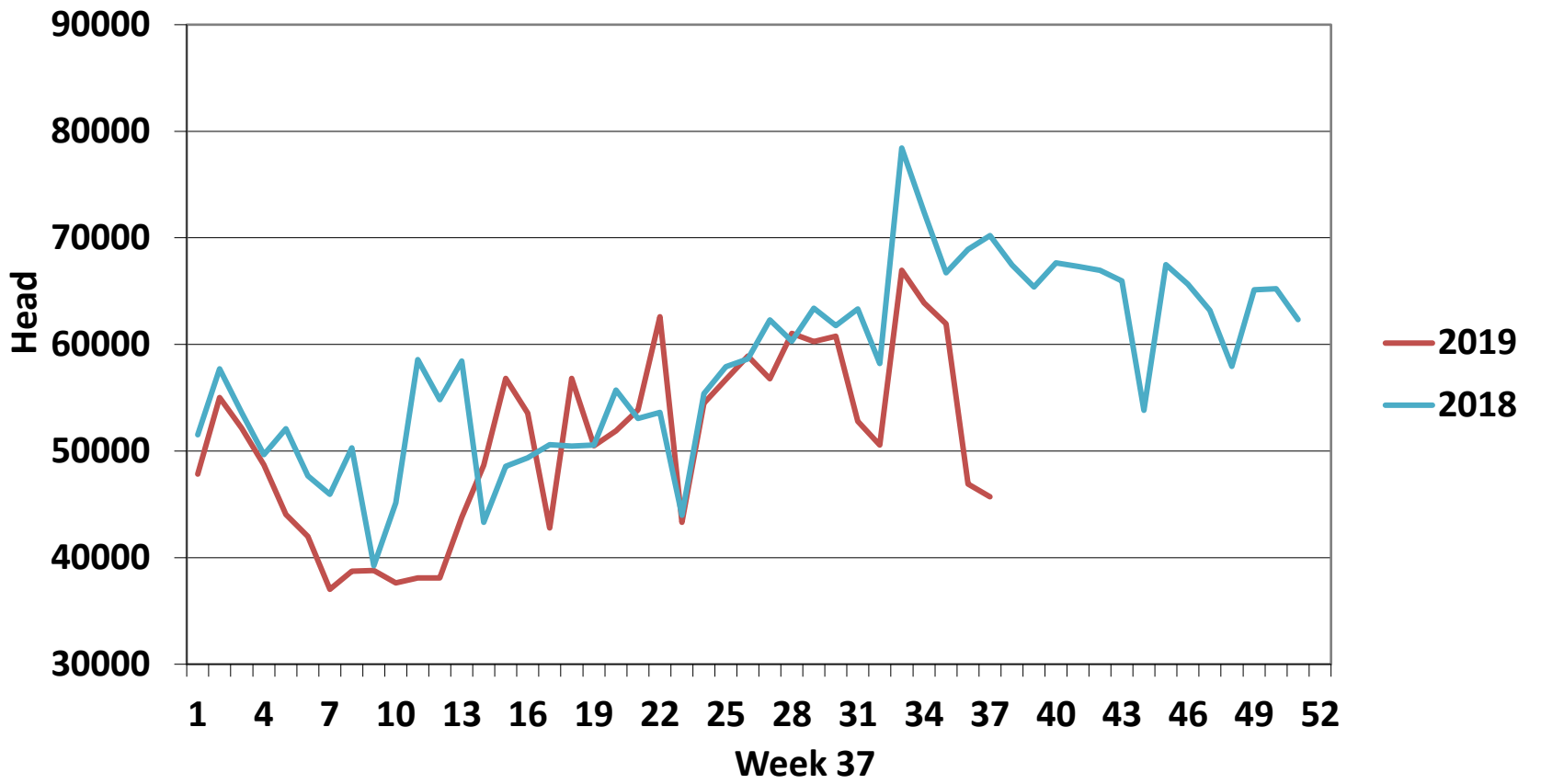
Slaughtering	2019	2018	Change
Weekly	45,700	70,219	-35%
YTD	1,880,382	2,061,838	-9%

EU Market Rates Heavy Lambs	€/100kg	% of Community Price
Belgium	483.5	104%
Denmark	512.7	111%
Germany	493.6	107%
Spain	501.8	108%
France	609.0	131%
Croatia	530.4	114%
Ireland	411.9	103%
Italy	576.0	124%
Cyprus	517.0	112%
Latvia	400.0	86%
Lithuania	411.0	89%
Netherlands	529.1	114%
Austria	548.0	118%
Poland	433.7	94%
Romania	180.0	39%
Finland	409.6	88%
Sweden	436.2	94%
Northern Ireland	376.4	81%
Great Britain	432.7	93%
United Kingdom	428.7	92%
Community	463.5	100%

**REPORT ON SLAUGHTERING AT SHEEP EXPORT PREMISES
WEEK 37**

CATEGORY	2019		2018		DIFFERENCE	
	Weekly	Cumulative	Weekly	Cumulative	Weekly	Cumulative
Lambs/Hoggets	94	737,785	136	828,641	-42	-90,856
Spring Lambs	39,795	868,679	56,428	886,050	-16,633	-17,371
Ewes and Rams	5,811	273,557	13,655	347,018	-7,844	-73,461
Light Lambs		361		129	0	232
TOTAL	45,700	1,880,382	70,219	2,061,838	-24,519	-181,456

Weekly Sheep Slaughtering



Ave. Price €/100 kg for Sheepmeat

