

Meat Market Report

16/09/19 - 22/09/19

Week

38



**An Roinn Talmhaíochta,
Bia agus Mara**

Department of Agriculture,
Food and the Marine

MARKET SUMMARY

Beef

Deadweight Prices c/100Kg (Including VAT)

	U3	U4	R3	R4	O3	O4	P+3
Steers	366.6	363.7	361.4	357.4	344.5	340.1	317.5
Heifers	383.0	378.2	371.7	368.1	357.6	351.8	313.9
Young Bulls	345.5	350.0	338.8	340.0	326.1	0.0	300.0
Cows			318.2	315.5	299.8	297.7	289.2

Liveweight Prices

*Bull Calf Average Price	€130.3 per head (Excluding VAT)
**Young Store Average Price	€211.0 per 100kg (Excluding VAT)
***Yearling (male & female) Price	€183.5 per 100kg (Excluding VAT)

* Aged 8-28 days ** Aged 180-364 days, Male & Female ***age 365-730 days

Slaughterings

9,986 cattle slaughtered this week, of which steers were 4,010 (40%), heifers 2,830 (28%), young bulls 549 (6%) and cows 2,379 (24%). Total YTD slaughter is 1,220,870, compared to 1,276,631 in 2018, a 4.4% decrease.

Live Trade

2,529 cattle were exported in the week commencing 09/09/2019, 1,856 to EU (Except NI). Live exports for 2019 amount to 246,557 compared to 206,769 in 2018, up 19% on 2018 levels.

*This data is provisional and subject to revision.

The next meeting of the Management Committee for the Common Organisation of Agricultural Markets (Animal Products Sector) is 17th October 2019

CONTENTS:

Page 2: Market Summary Beef
 Page 3: Market Summary Other Meats
 Page 4: Beef Price and Slaughter Summary
 Page 5: Comparative Beef Prices
 Page 6: Steer and Young Bull Price
 Page 7: Heifer and Cow Graphs
 Page 8: Price and Slaughter Graphs
 Page 9: Liveweight Beef Graphs

Page 10: Beef Export Maps
 Page 11: Beef Export Info
 Page 12: Pig price and slaughter graphs
 Page 13: Sheep prices and slaughter
 Page 15: Sheep price and slaughter graphs

MARKET SUMMARY

Pigmeat

Grade E Pig
Prices (Ex.
VAT)

The Grade E Pig price for week commencing 16/09/2019 was €174.59 per 100Kg compared to €136.80 in the same week last year, which represents a 28% increase.

Slaughtering

64,433 pigs were slaughtered in week 38 of which 1,690 were sows. The cumulative figure for pig slaughterings in 2019 is 2,469,171 which is a 1% decrease with the same point last year.

Sheepmeat

Sheepmeat
Prices (Ex.
VAT)

The national average price for the week commencing 16/09/2019 was €294.76 per 100Kg, a decrease of 30.3% over the same week last year.

Slaughtering

50,930 sheep were slaughtered at sheep export premises the week commencing 16/09/2019, compared to 67,458 in the same week of 2018. Sheep slaughterings for 2019 are 9% down on 2018 at 1,931,312 head.

Live Trade

Total live exports to European Countries stood at 6,227 head to the end of August 2019.

Poultry

Slaughtering

Cumulative poultry slaughterings for 2019* stand at 77,360,636 birds at the end of week 38, up 8% compared to the same period last year.

*Latest Figures are provisional and subject to change

Dead Weight Prices	W/C	W/C	Same week 2018	% change prev week	% change 2018
	16/09/19	09/09/19	17/09/18		
Steers (R3) (c/kg)	342.9	343.8	369.1	-0.3%	-7.1%
Heifers (R3) (c/kg)	352.6	352.3	380.3	0.1%	-7.3%
Young Bulls (U3) (c/kg)	327.8	337.9	374.8	-3.0%	-12.5%
Cows (04) (c/kg)	282.4	284.0	295.3	-0.6%	-4.3%

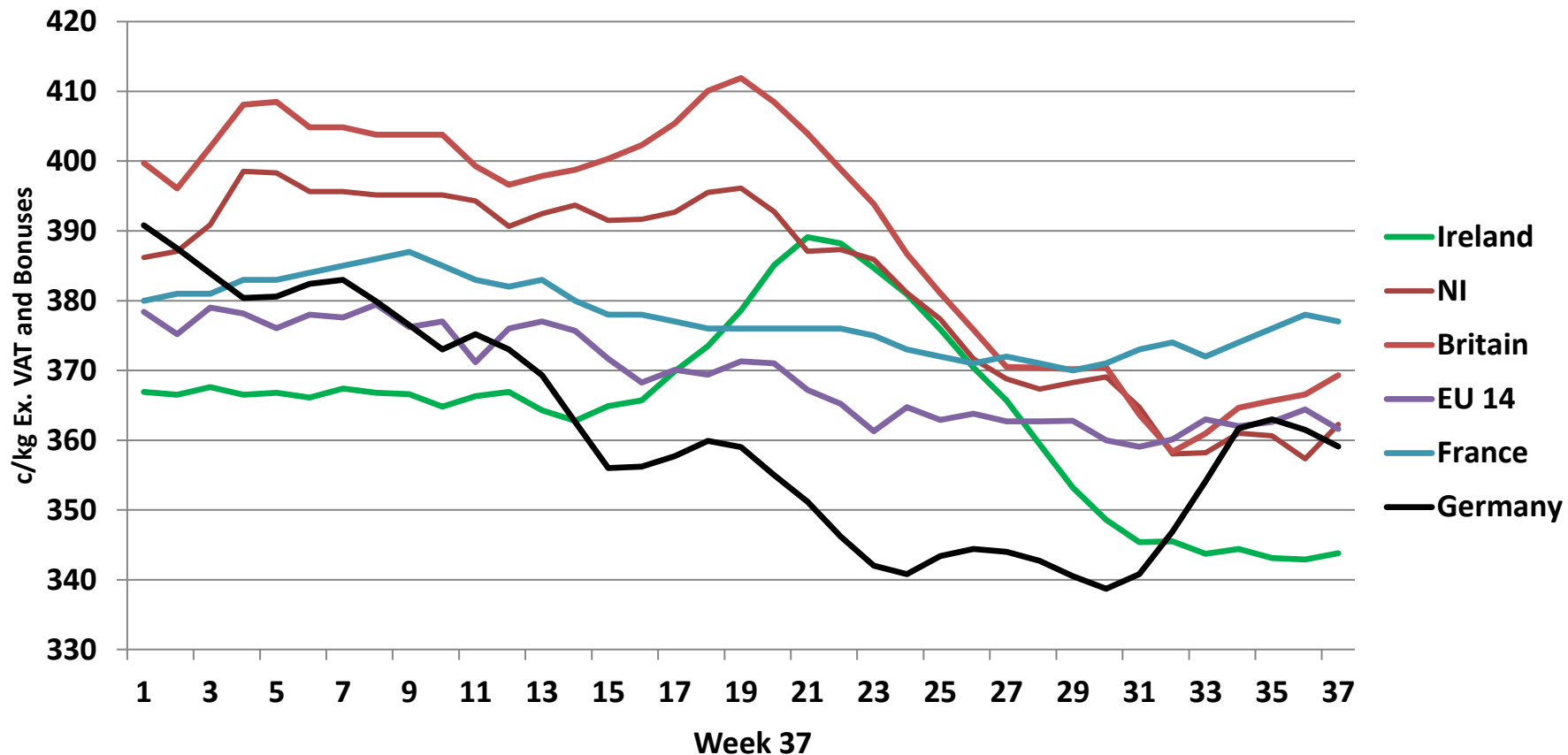
Live Weight Prices	W/C	W/C	Same week 2018	% change previous week	% change 2018
	16/09/19	09/09/19	17/09/18		
Yearlings (Male) (Aged 365 - 730 days) - (€/100Kg)	182	186	176	-2.2%	3.4%
Yearlings (Female) (Aged 365 - 730 days) - (€/100Kg)	185	182	185	1.6%	0.0%
Young Stores (Male & Female) (Aged 180 - 364 days) - (€/100Kg)	211	208	222	1.4%	-5.0%
Bull Calf (€/head) Dairy	105.4	137.0	120.4	-23.1%	-12.5%
Bull Calf (€/head) Beef	155.2	229.6	217.5	-32.4%	-28.6%
Bull Calf (€/head) Average	130.3	183.3	169.0	-28.9%	-22.9%

Slaughter Figures	% of weekly figures	W/C	Same week 2018	Year to Date		Change 2019 v 2018	
		16-Sep-19		2019	2018	Head	%
Steers	40.2%	4,010	16,370	420,732	470,780	-50,048	-10.6%
Cows	23.8%	2,379	8,119	251,911	283,338	-31,427	-11.1%
Heifers	28.3%	2,830	9,693	358,077	347,771	10,306	3.0%
Young Bulls	5.5%	549	2,076	162,693	151,028	11,665	7.7%
Mature Bulls	2.2%	218	552	27,457	23,714	3,743	15.8%
Total	100%	9,986	36,810	1,220,870	1,276,631	-55,761	-4.4%

821

Live Exports	W/C	Same week	W/C	Year to Date		Change 2019 v 2018	
	9-Sep-19	2018	26-Aug-19	2019	2018	Head	%
Northern Ireland	580	864	343	22,210	13,067	9,143	70%
EU Except NI	1,856	1,983	1,070	216,177	175,711	40,466	23%
Third Countries	93	0	0	8,170	17,991	-9,821	-
Total	2,529	2,847	1,413	246,557	206,769	39,788	19%
Calves YTD:	191,959			Adult YTD:Cattle		54,469	

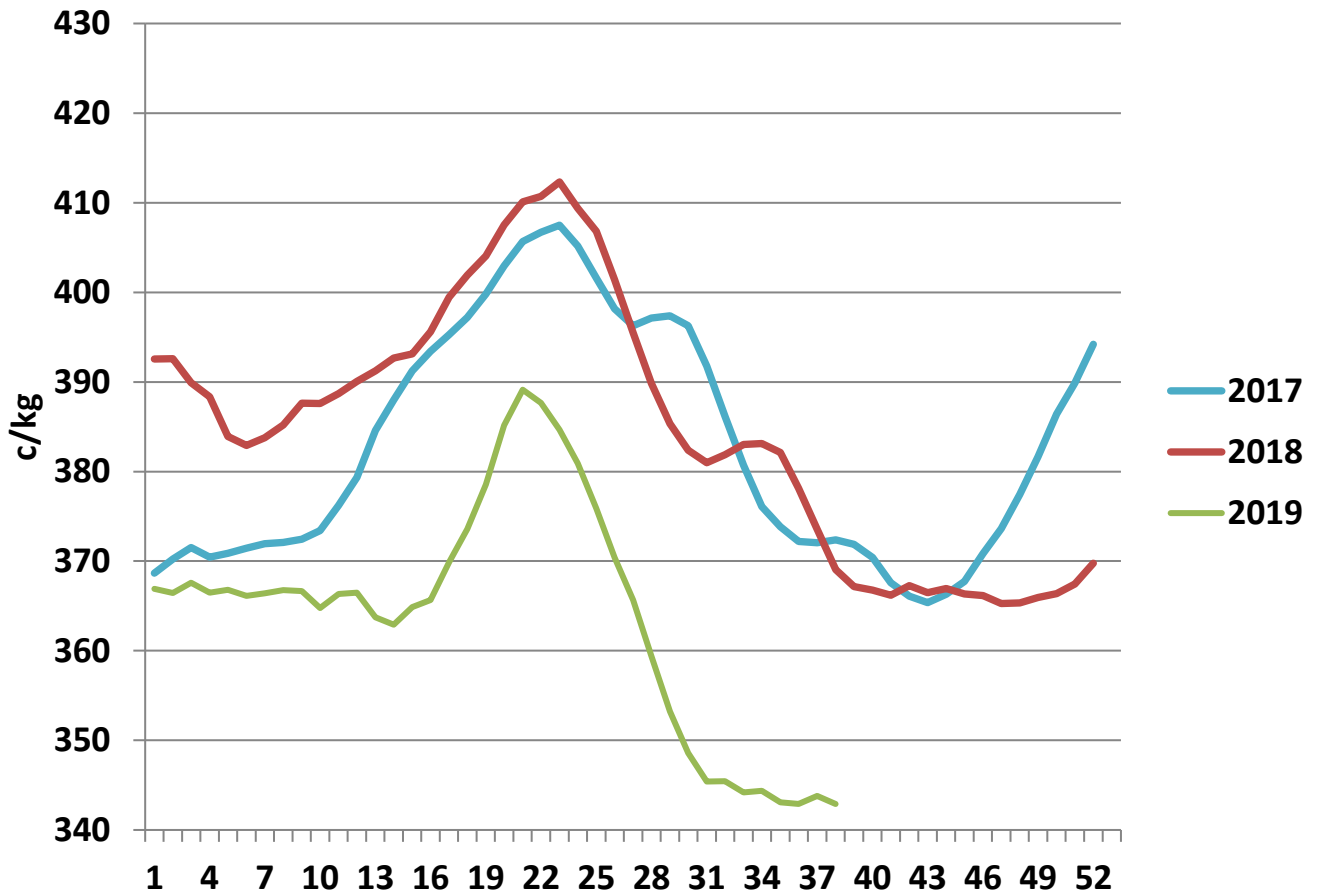
Irish Deadweight Cattle Prices vs Selected Other Markets, 2019



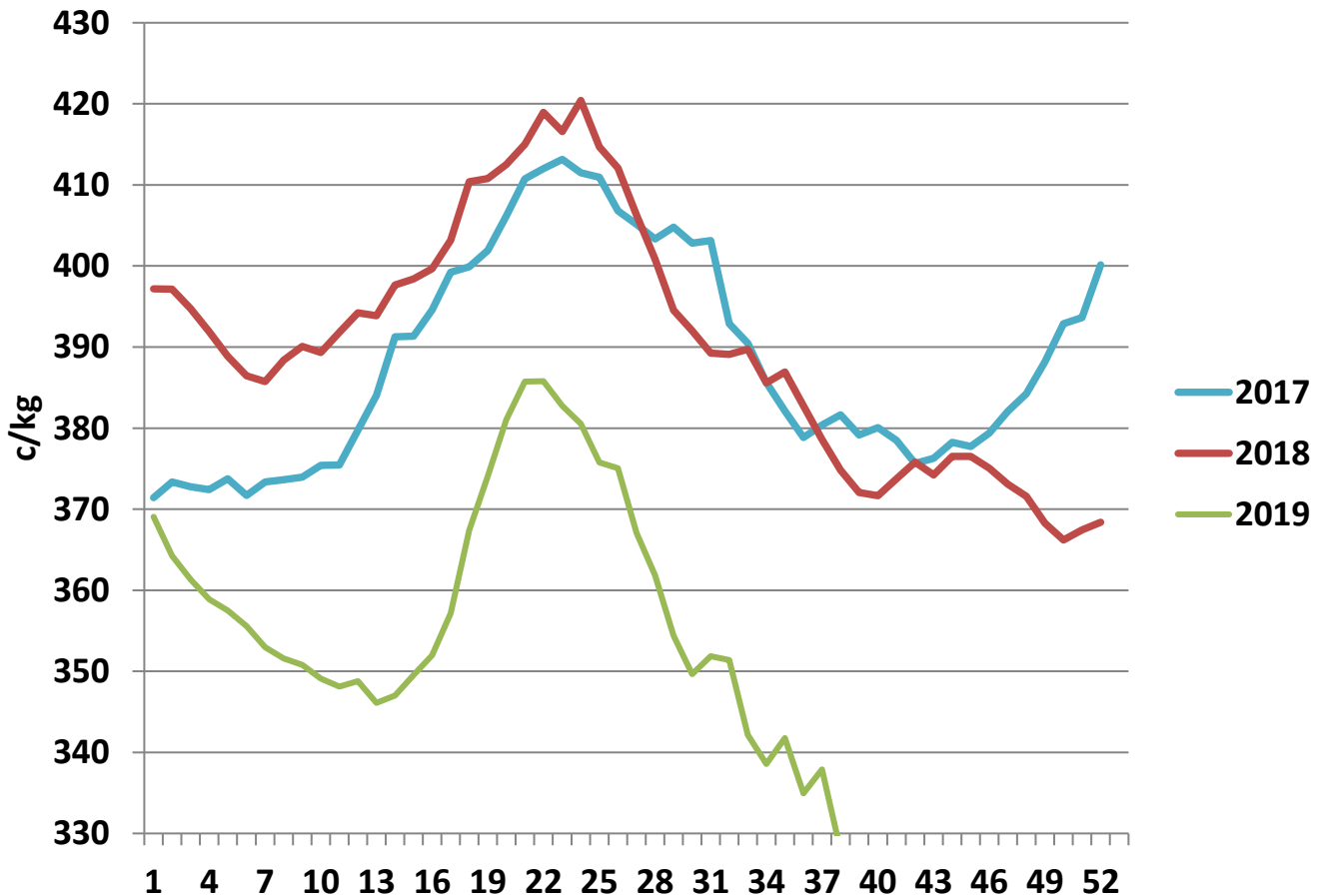
Livestock Pricing

	Ireland	NI	Britain	EU 14 Average	France	Germany
W/C 09/09/19	343.8	362.27	369.33	361.6	377	359.1

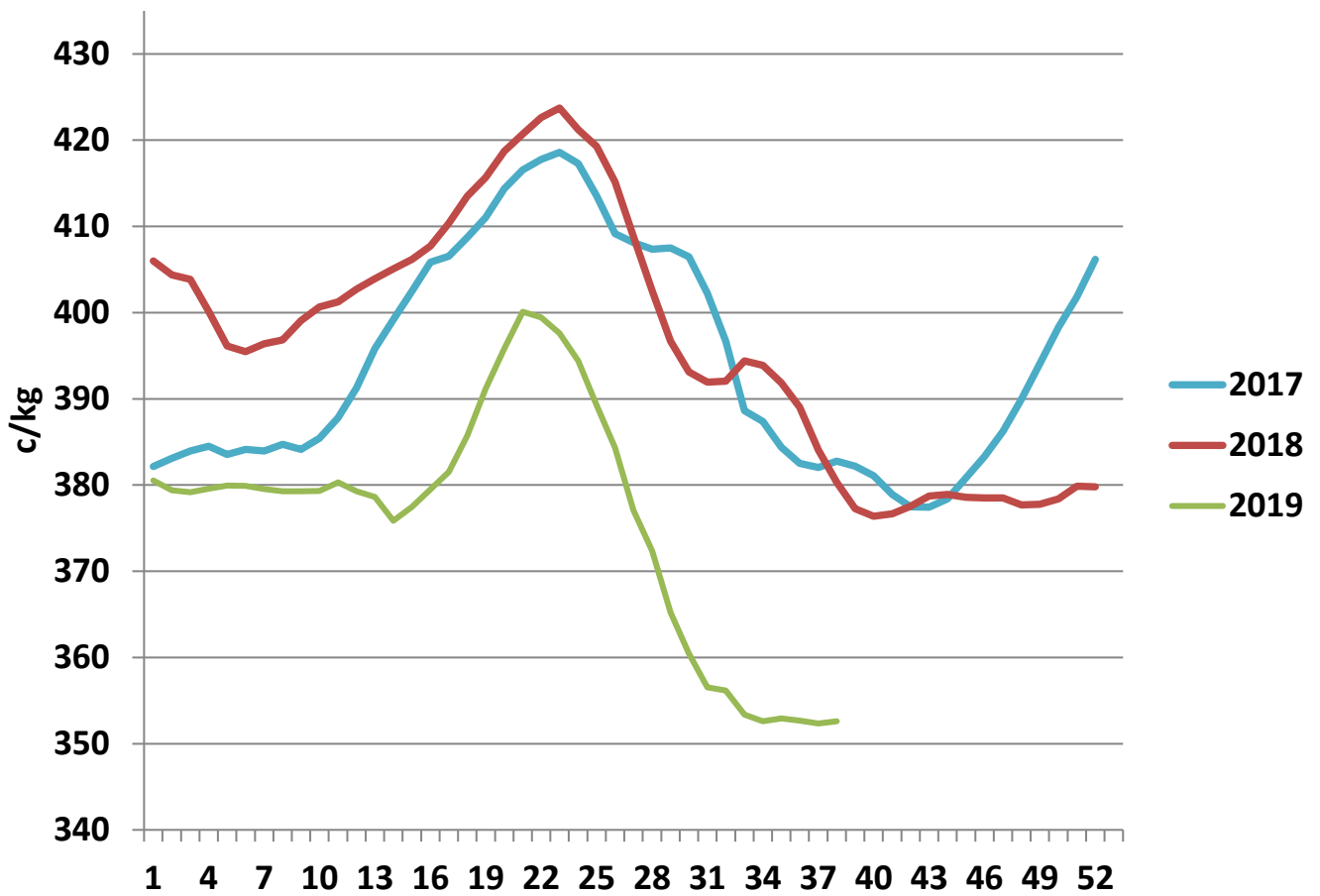
R3 Steer prices ex. VAT



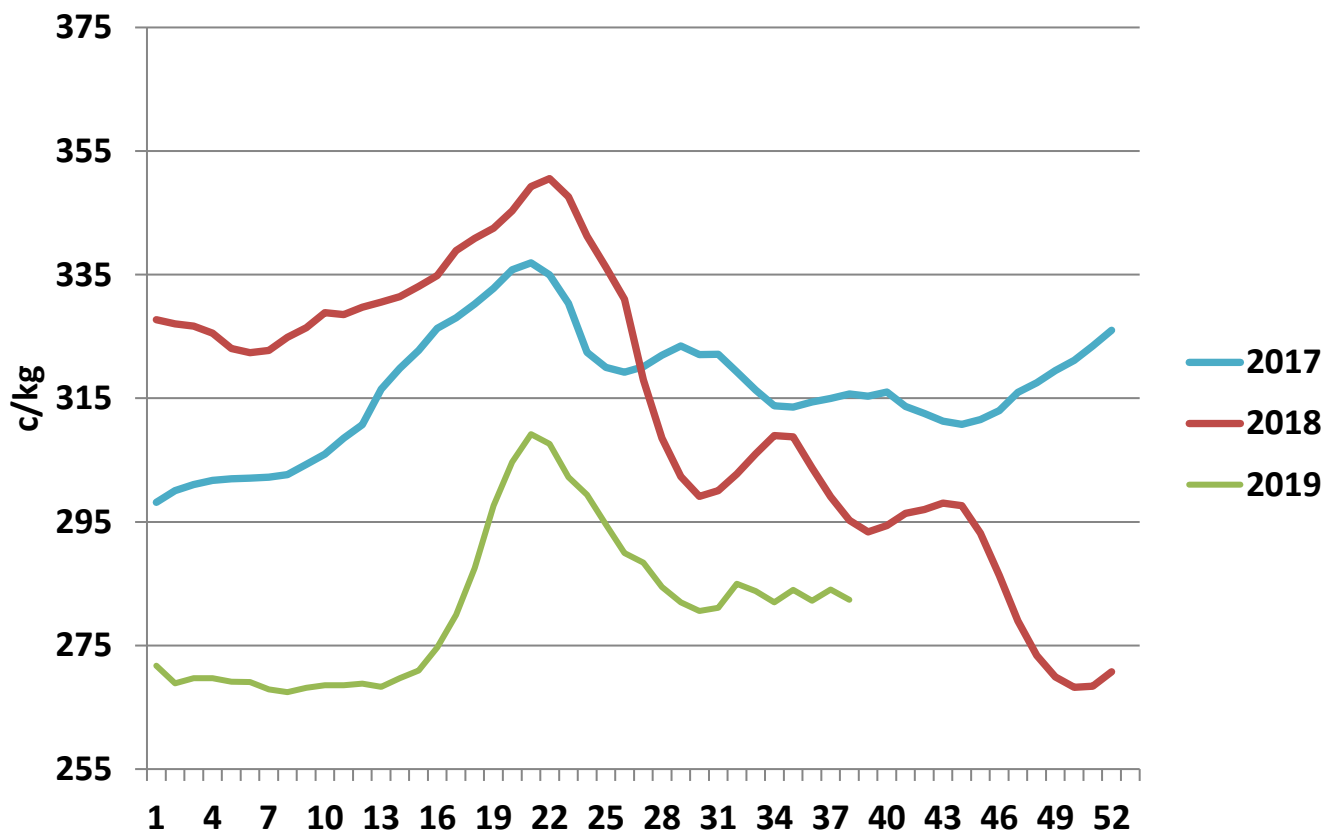
U3 Young Bull prices ex. VAT



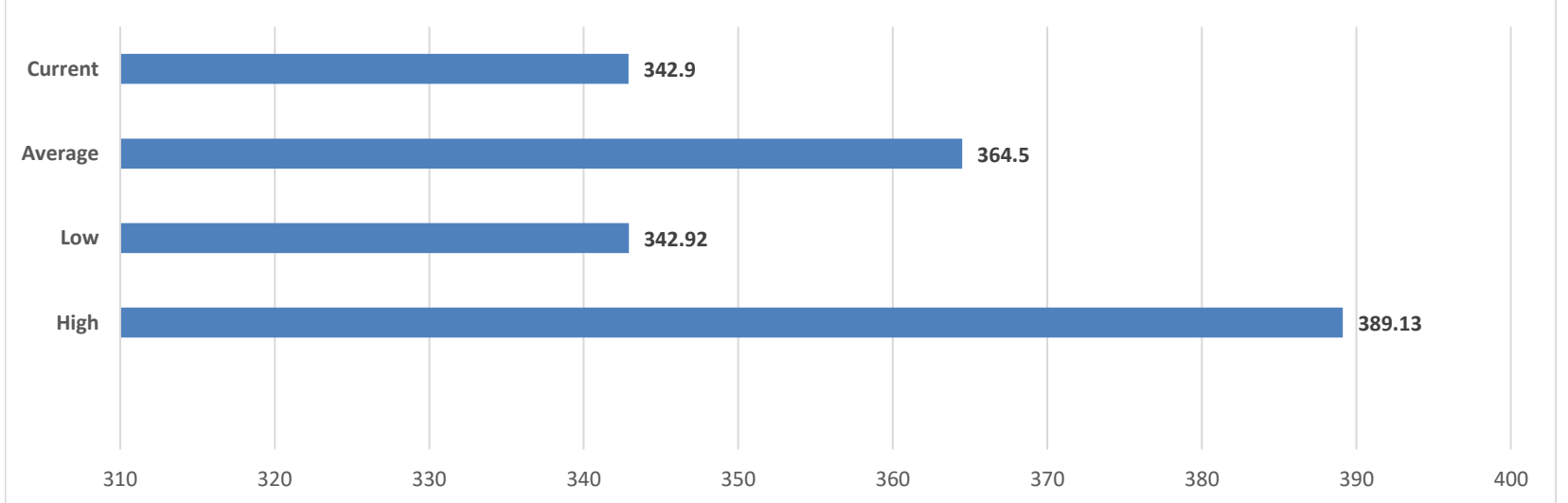
R3 Heifer prices ex. VAT



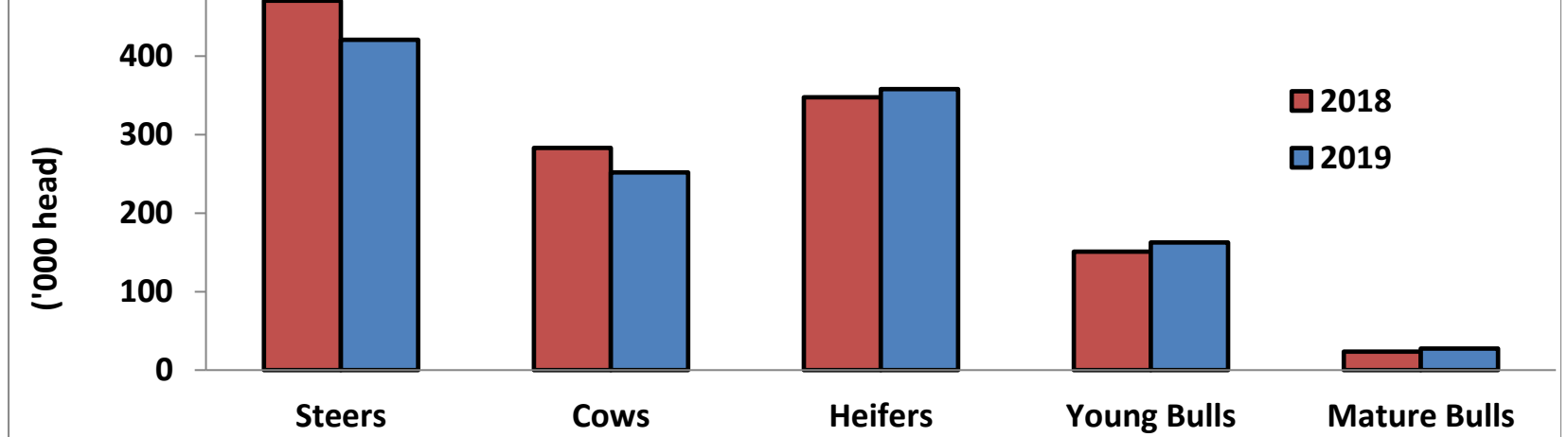
O4 Cow prices ex. VAT



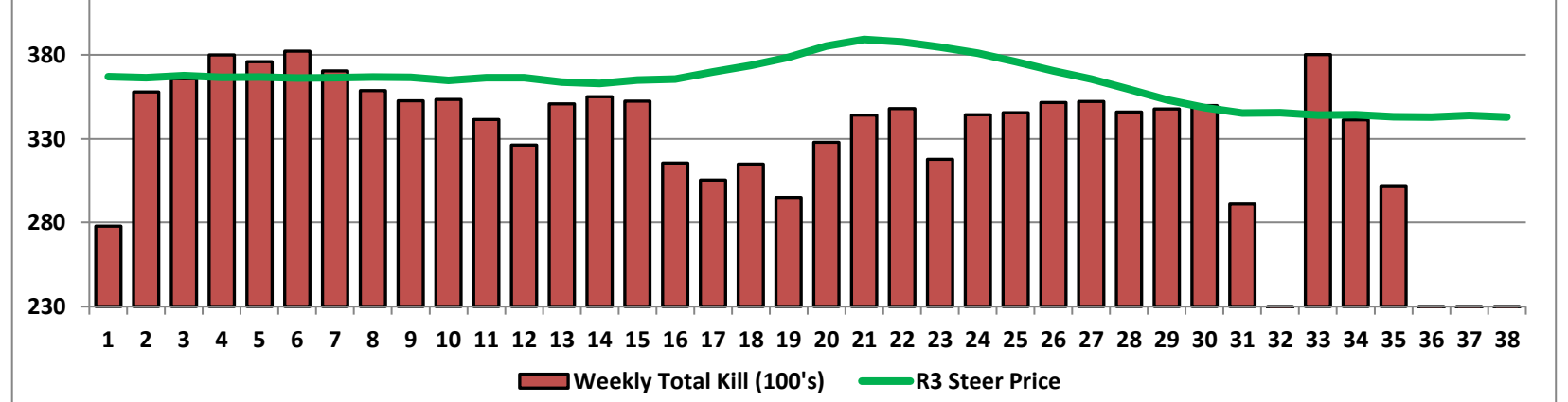
6 Month R3 Steer Statistics



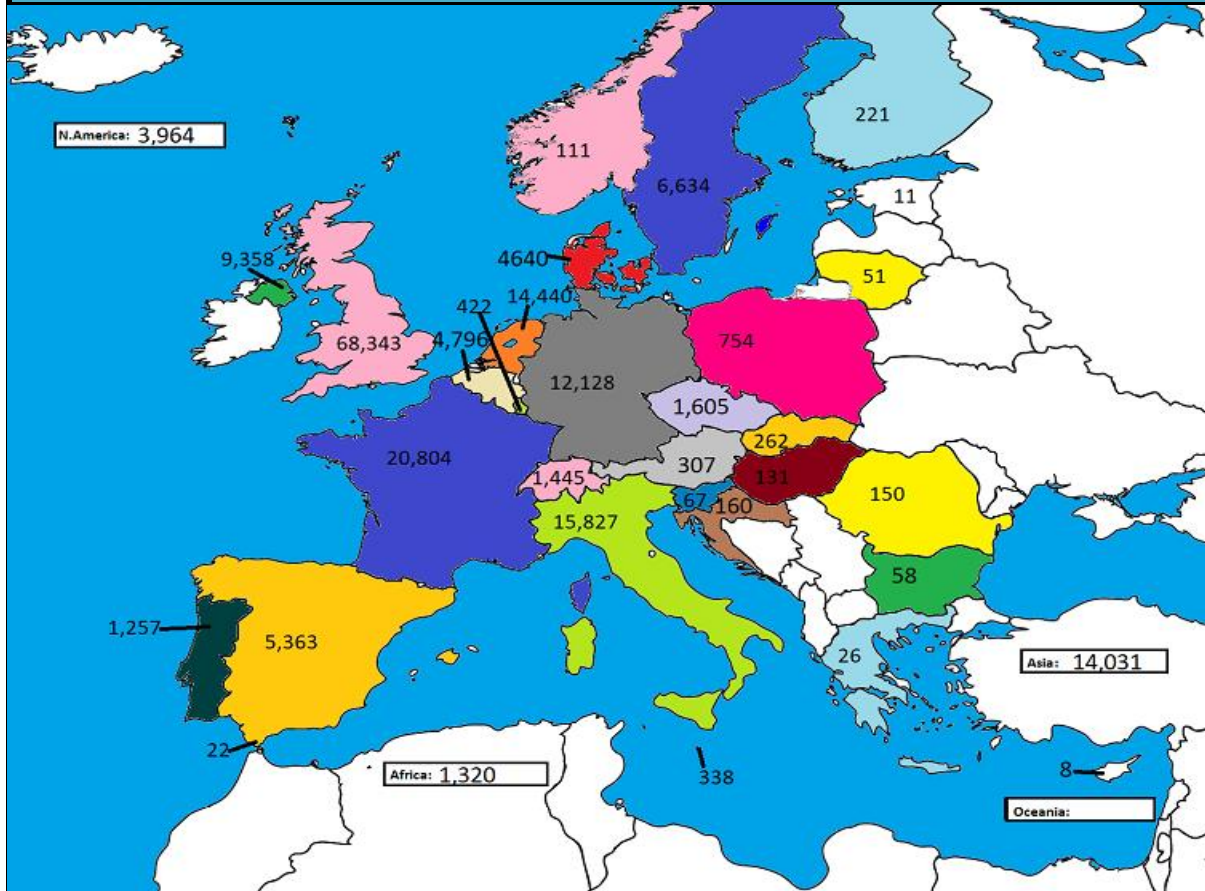
Bovine Slaughterings (Year to Date)



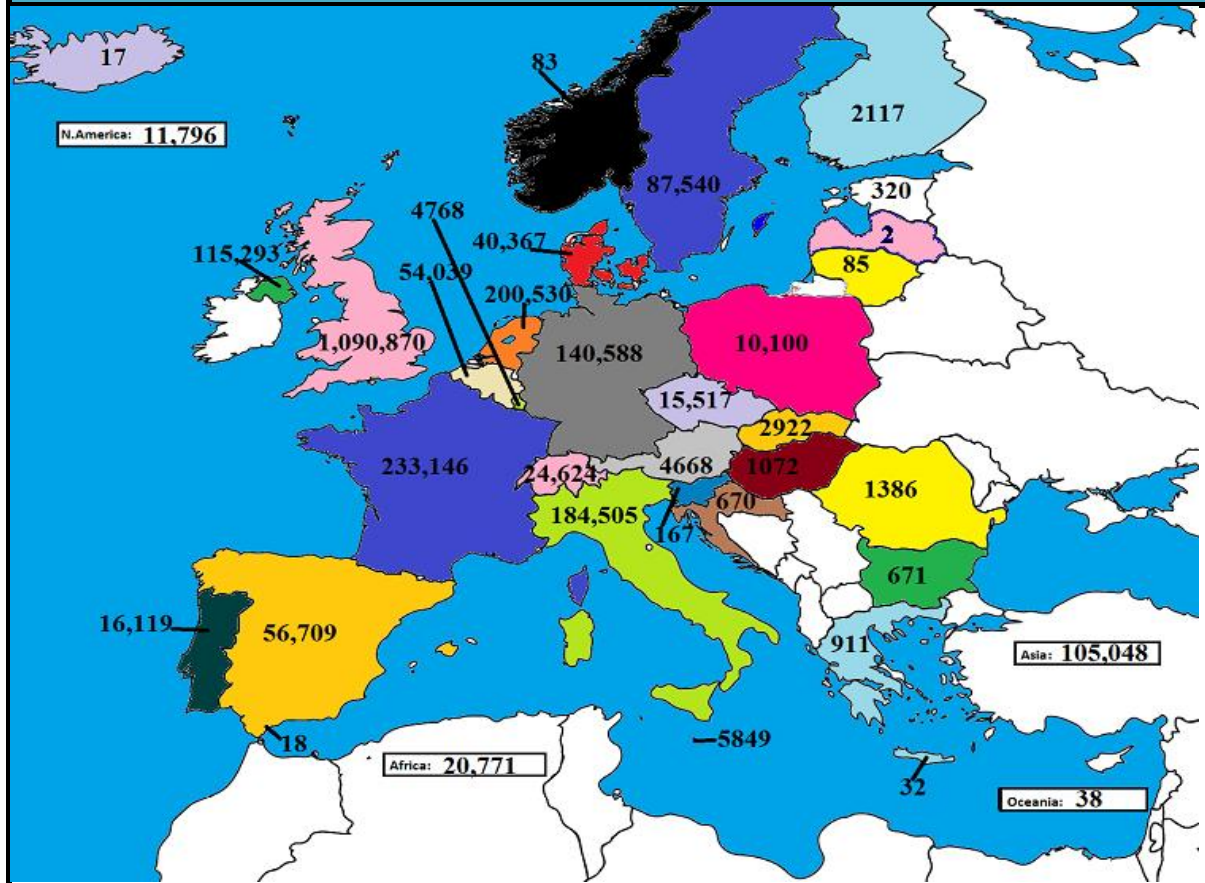
Kill vs Price



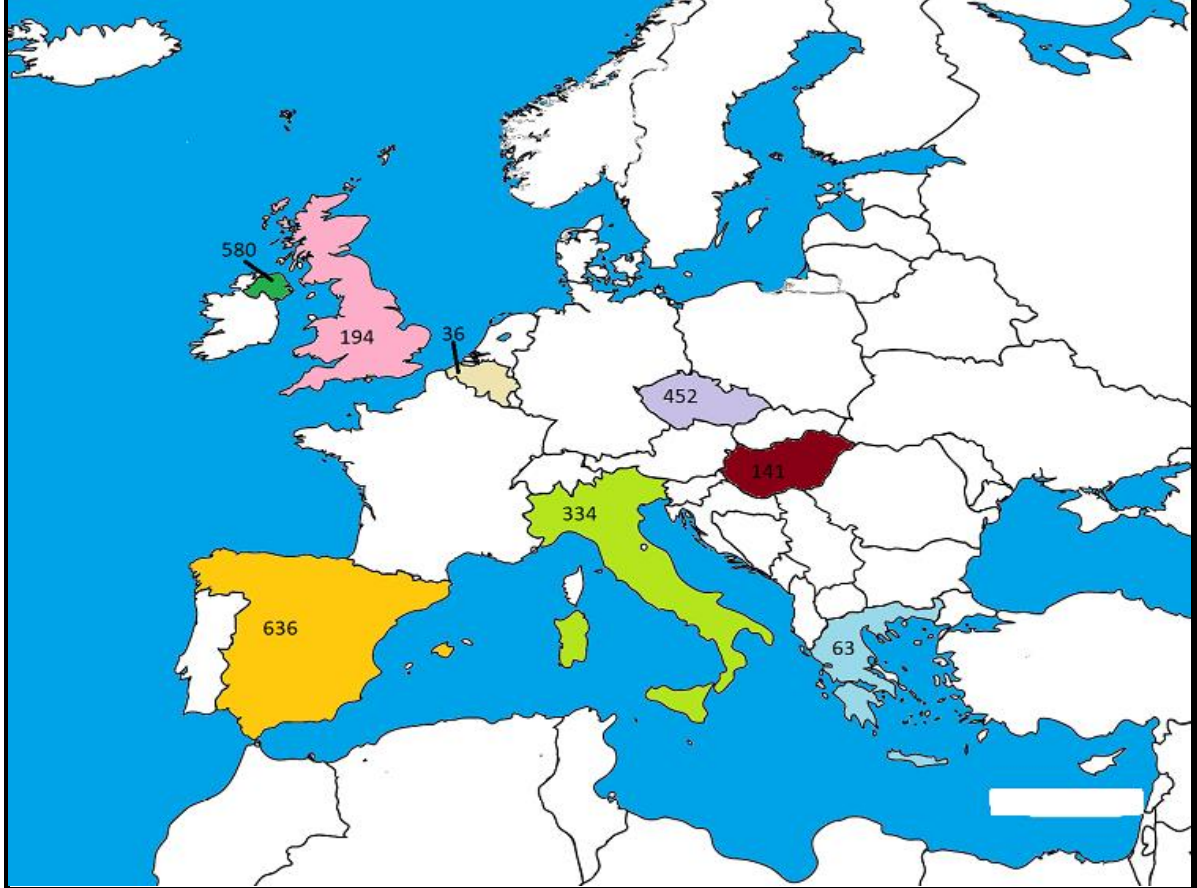
July 2019 Beef exports, €000 (CSO figures)



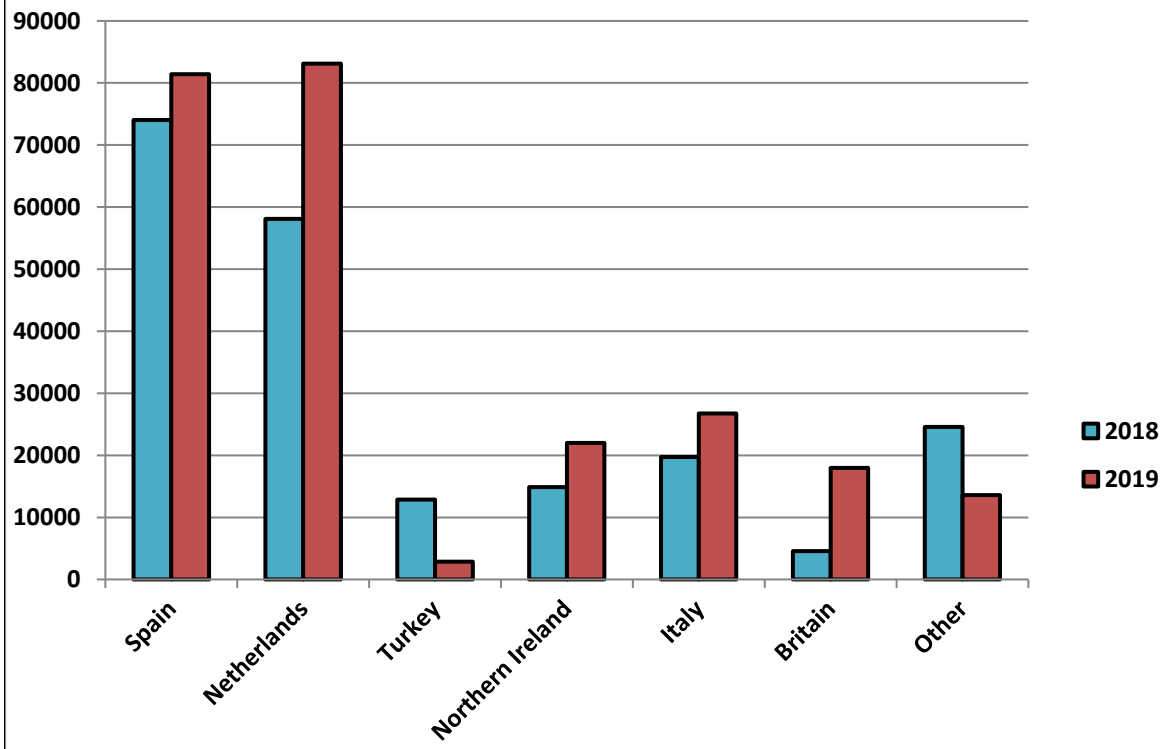
Cumulative beef exports to Dec 2018, €000 (CSO figures)



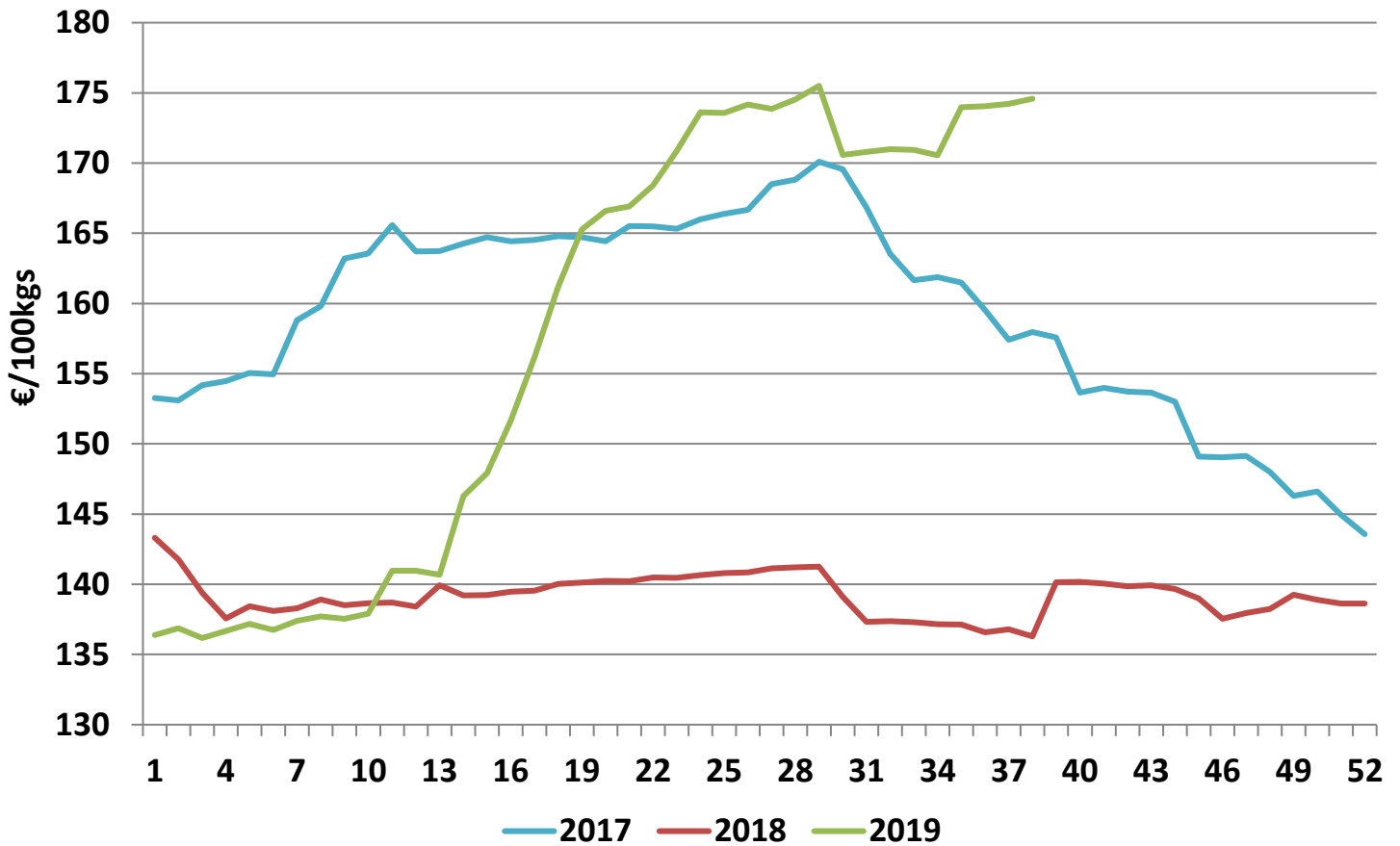
Cattle exported, w/c 09/09/19



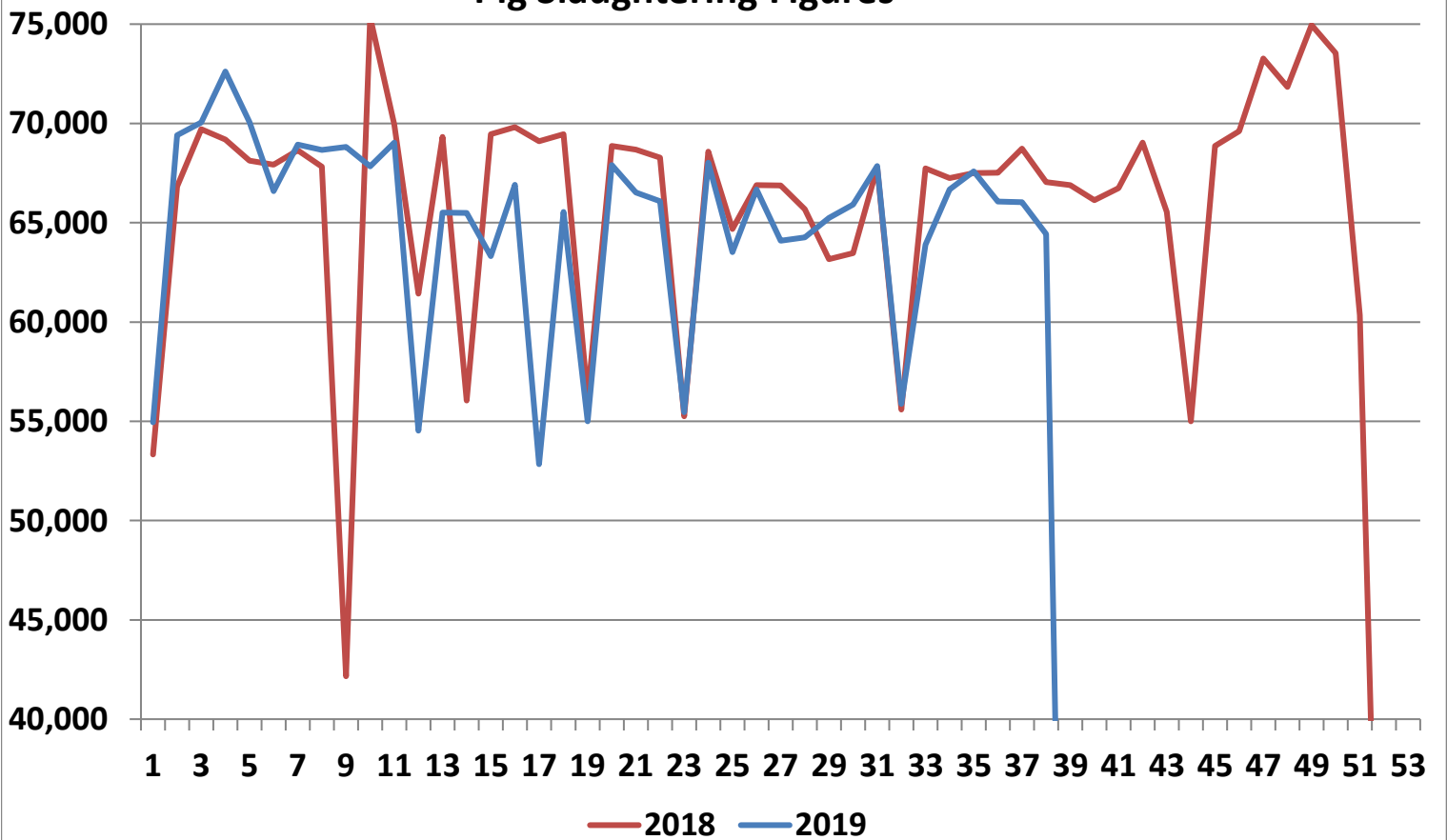
Cumulative cattle export figures, 2019



Average Grade E Pig Price



Pig Slaughtering Figures



Sheepmeat Information for Week 38

NOTE: EU PRICES
ARE PROVISIONAL AT
THE TIME OF
PUBLICATION AND
MAY NOT BE
REFLECTIVE OF THE
CURRENT PERIOD

Irish Prices €/100 kg	2019	2018	Change
Ave Factory Price	415.03	441.77	-6.1%
Ave Mart Price	375.58	378.01	-0.6%
National Ave Price	403.2	422.64	-4.6%
YTD Ave	471.69	499.96	-5.7%

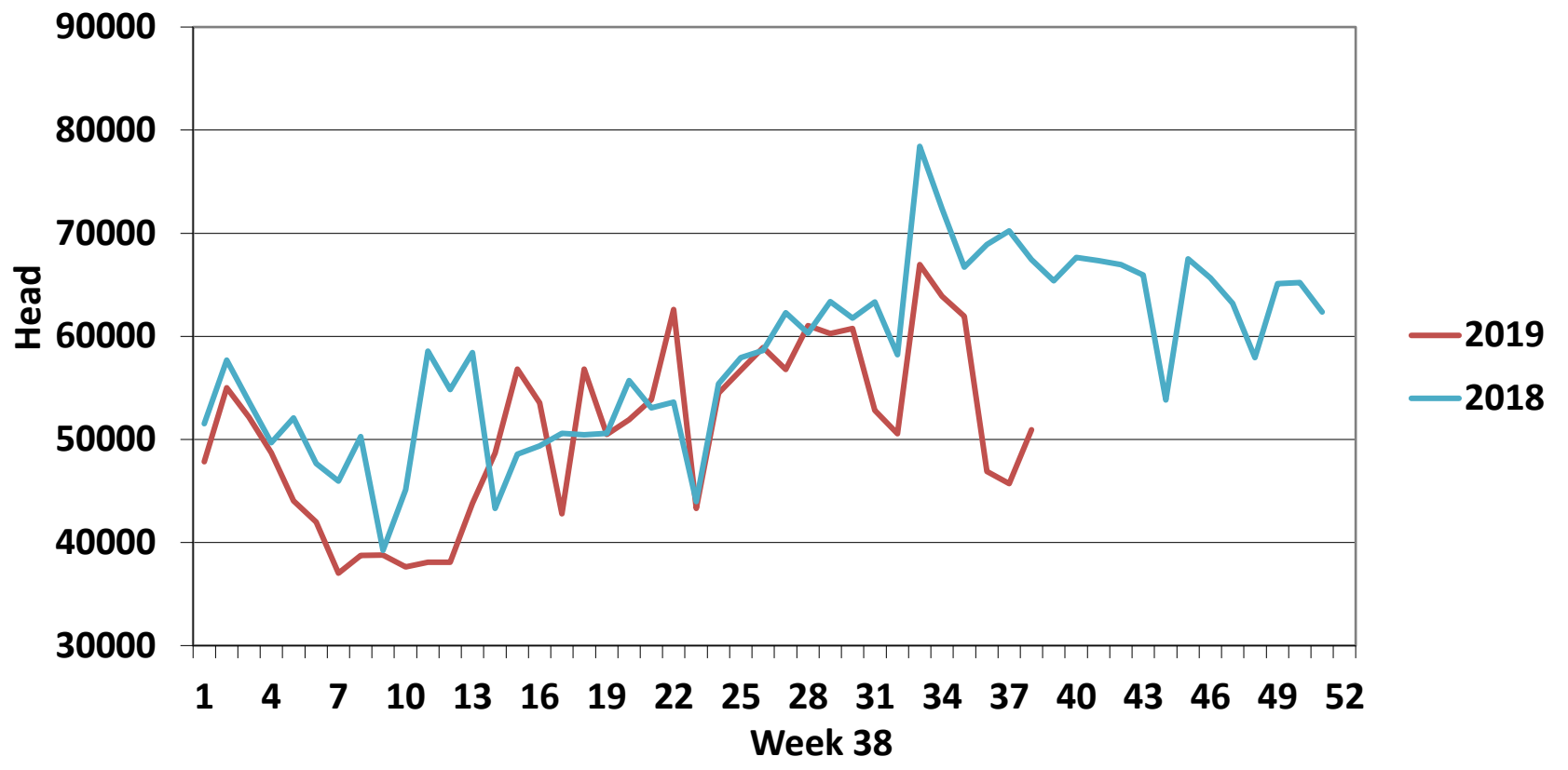
Slaughtering	2019	2018	Change
Weekly	50,930	67,458	-25%
YTD	1,931,312	2,129,296	-9%

EU Market Rates Heavy Lambs	€/100kg	% of Community Price
Belgium	478.2	103%
Denmark	531.6	115%
Germany	493.6	107%
Spain	511.6	110%
France	615.0	133%
Croatia	476.7	103%
Ireland	403.2	90%
Italy	578.0	125%
Cyprus	552.0	119%
Latvia	321.6	69%
Lithuania	357.4	77%
Netherlands	501.1	108%
Austria	552.0	119%
Poland	432.2	93%
Romania	194.6	42%
Finland	409.6	88%
Sweden	427.0	92%
Northern Ireland	374.2	81%
Great Britain	424.7	92%
United Kingdom	421.1	91%
Community	463.1	100%

**REPORT ON SLAUGHTERING AT SHEEP EXPORT PREMISES
WEEK 38**

CATEGORY	2019		2018		DIFFERENCE	
	Weekly	Cumulative	Weekly	Cumulative	Weekly	Cumulative
Lambs/Hoggets	89	737,874	42	828,683	47	90,809
Spring Lambs	43,545	912,224	53,861	939,911	-10,316	27,687
Ewes and Rams	7,296	280,853	13,552	360,570	-6,256	79,717
Light Lambs		361	3	132	-3	229
TOTAL	50,930	1,931,312	67,458	2,129,296	-16,528	-197,984

Weekly Sheep Slaughterings



Ave. Price €/100 kg for Sheepmeat

