

Meat Market Report

23/09/19 - 29/09/19

Week

39



**An Roinn Talmhaíochta,
Bia agus Mara**

Department of Agriculture,
Food and the Marine

MARKET SUMMARY

Beef

Deadweight Prices c/100Kg (Including VAT)

	U3	U4	R3	R4	O3	O4	P+3
Steers	377.4	375.9	367.3	365.7	347.0	347.8	319.2
Heifers	390.4	386.1	377.7	374.9	361.8	358.1	326.6
Young Bulls	357.3	354.5	346.0	339.1	324.9	326.8	311.7
Cows			318.7	316.8	298.7	297.8	288.2

Liveweight Prices

*Bull Calf Average Price	€125.1 per head (Excluding VAT)
**Young Store Average Price	€211.0 per 100kg (Excluding VAT)
***Yearling (male & female) Price	€183.5 per 100kg (Excluding VAT)

* Aged 8-28 days ** Aged 180-364 days, Male & Female ***age 365-730 days

Slaughterings

37,003 cattle slaughtered this week, of which steers were 18,236 (49%), heifers 11,642 (31%), young bulls 2,240 (6%) and cows 4,405 (12%). Total YTD slaughter is 1,257,873, compared to 1,315,873 in 2018, a 4.4% decrease.

Live Trade

4,743 cattle were exported in the week commencing 16/09/2019, 1,748 to EU (Except NI). Live exports for 2019 amount to 251,300 compared to 209,755 in 2018, up 20% on 2018 levels.

*This data is provisional and subject to revision.

The next meeting of the Management Committee for the Common Organisation of Agricultural Markets (Animal Products Sector) is 17th October 2019

CONTENTS:

Page 2: Market Summary Beef
 Page 3: Market Summary Other Meats
 Page 4: Beef Price and Slaughter Summary
 Page 5: Comparative Beef Prices
 Page 6: Steer and Young Bull Price
 Page 7: Heifer and Cow Graphs
 Page 8: Price and Slaughter Graphs
 Page 9: Liveweight Beef Graphs

Page 10: Beef Export Maps
 Page 11: Beef Export Info
 Page 12: Pig price and slaughter graphs
 Page 13: Sheep prices and slaughter
 Page 15: Sheep price and slaughter graphs

MARKET SUMMARY

Pigmeat

Grade E Pig
Prices (Ex.
VAT)

The Grade E Pig price for week commencing 23/09/2019 was €174.56 per 100Kg compared to €140.14 in the same week last year, which represents a 25% increase.

Slaughtering

65,112 pigs were slaughtered in week 39 of which 1,923 were sows. The cumulative figure for pig slaughterings in 2019 is 2,534,283 which is a 1% decrease with the same point last year.

Sheepmeat

Sheepmeat
Prices (Ex.
VAT)

The national average price for the week commencing 23/09/2019 was €414.1 per 100Kg, a decrease of 1% over the : the same week last year.

Slaughtering

66,643 sheep were slaughtered at sheep export premises the week commencing 23/09/2019, compared to 65,380 in the same week of 2018. Sheep slaughterings for 2019 are 9% down on 2018 at 1,997,955 head.

Live Trade

Total live exports to European Countries stood at 6,227 head to the end of August 2019.

Poultry

Slaughtering

Cumulative poultry slaughterings for 2019* stand at 79,507,978 birds at the end of week 39, up 8% compared to the same period last year.

*Latest Figures are provisional and subject to change

Dead Weight Prices	W/C	W/C	Same week 2018	% change prev week	% change 2018
	23/09/19	16/09/19	24/09/18		
Steers (R3) (c/kg)	348.4	342.9	367.2	1.6%	-5.1%
Heifers (R3) (c/kg)	358.3	352.6	377.3	1.6%	-5.0%
Young Bulls (U3) (c/kg)	339.0	327.8	372.0	3.4%	-8.9%
Cows (04) (c/kg)	282.6	282.4	293.4	0.1%	-3.7%

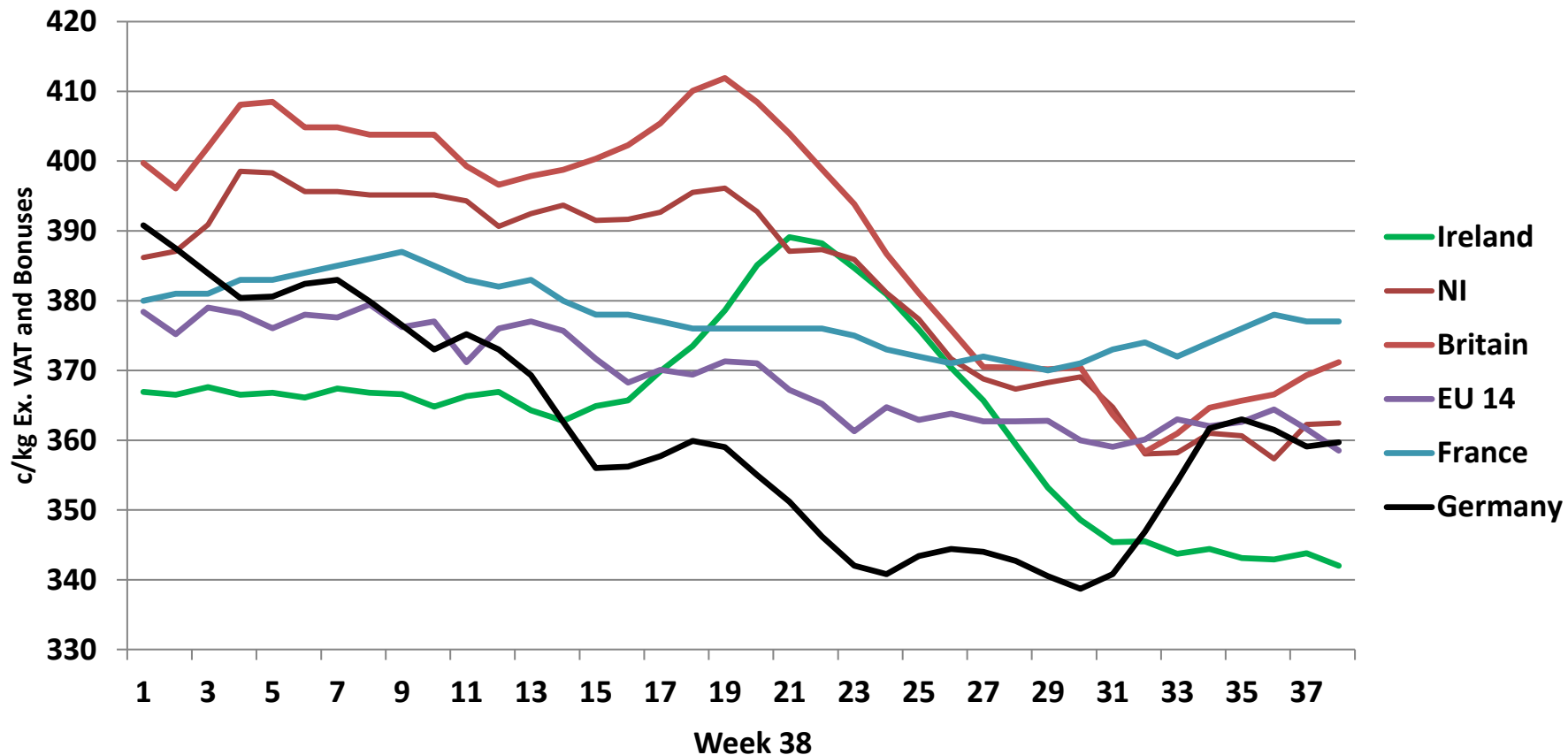
Live Weight Prices	W/C	W/C	Same week 2018	% change previous week	% change 2018
	23/09/19	16/09/19	24/09/18		
Yearlings (Male) (Aged 365 - 730 days) - (€/100Kg)	184	182	181	1.1%	1.7%
Yearlings (Female) (Aged 365 - 730 days) - (€/100Kg)	183	185	186	-1.1%	-1.6%
Young Stores (Male & Female) (Aged 180 - 364 days) - (€/100Kg)	211	211	220	0.0%	-4.1%
Bull Calf (€/head) Dairy	84.0	105.4	94.1	-20.3%	-10.7%
Bull Calf (€/head) Beef	166.2	155.2	179.7	7.1%	-7.5%
Bull Calf (€/head) Average	125.1	130.3	136.9	-4.0%	-8.6%

Slaughter Figures	% of weekly figures	W/C	Same week 2018	Year to Date		Change 2019 v 2018	
		23-Sep-19		2019	2018	Head	%
Steers	49.3%	18,236	17,003	438,968	488,109	-49,141	-10.1%
Cows	11.9%	4,405	8,376	256,316	291,714	-35,398	-12.1%
Heifers	31.5%	11,642	9,865	369,719	357,636	12,083	3.4%
Young Bulls	6.1%	2,240	2,177	164,933	153,777	11,156	7.3%
Mature Bulls	1.3%	480	557	27,937	24,637	3,300	13.4%
Total	100%	37,003	37,978	1,257,873	1,315,873	-58,000	-4.4%

821

Live Exports	W/C	Same week	W/C	Year to Date		Change 2019 v 2018	
	16-Sep-19	2018	09-Sep-19	2019	2018	Head	%
Northern Ireland	597	918	580	22,807	13,985	8,822	63%
EU Except NI	1,748	2,068	1,856	217,925	177,779	40,146	23%
Third Countries	2,398	0	93	10,568	17,991	-7,423	-
Total	4,743	2,986	2,529	251,300	209,755	41,545	20%
Calves YTD:	192,325			Adult YTD:Cattle		58,842	

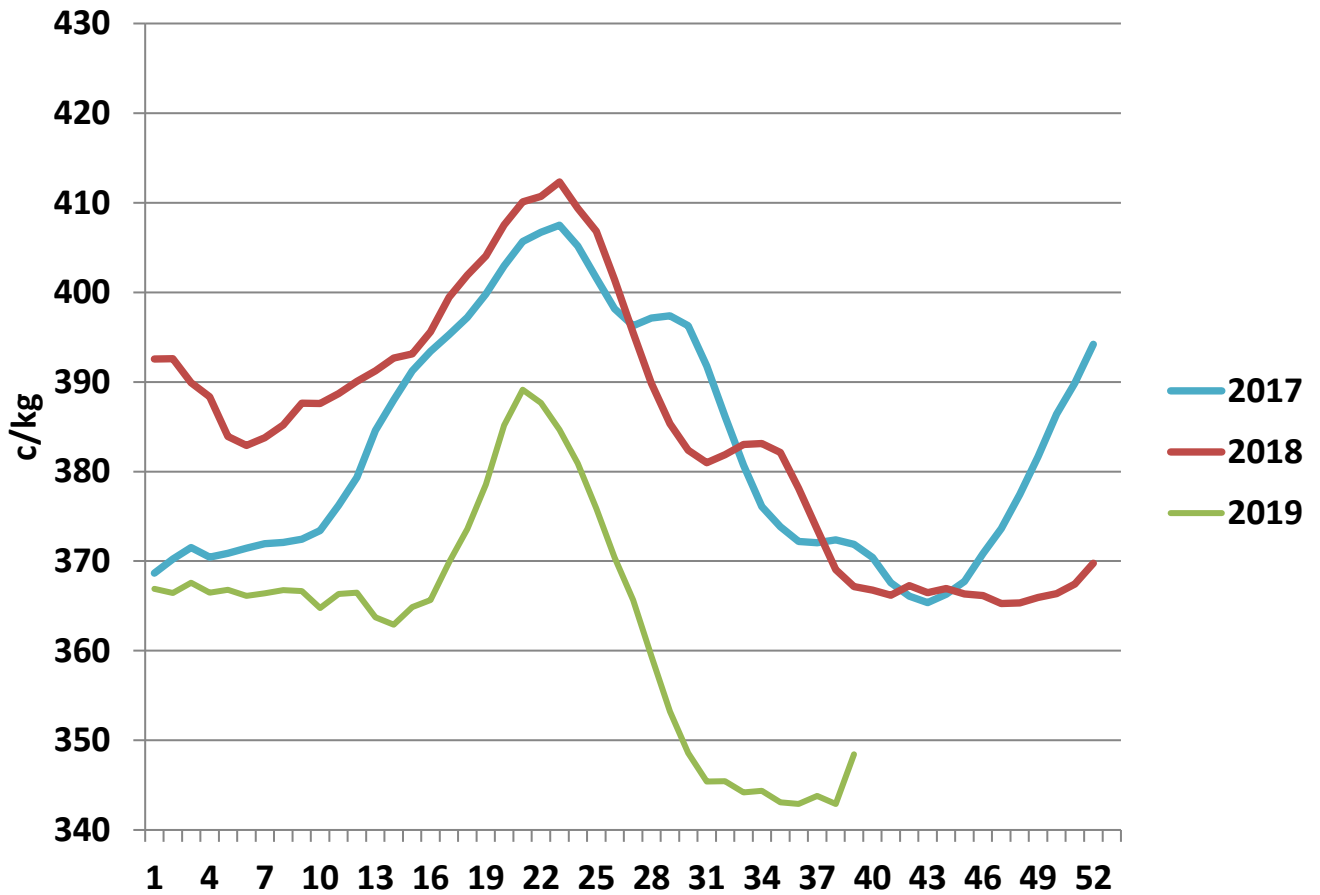
Irish Deadweight Cattle Prices vs Selected Other Markets, 2019



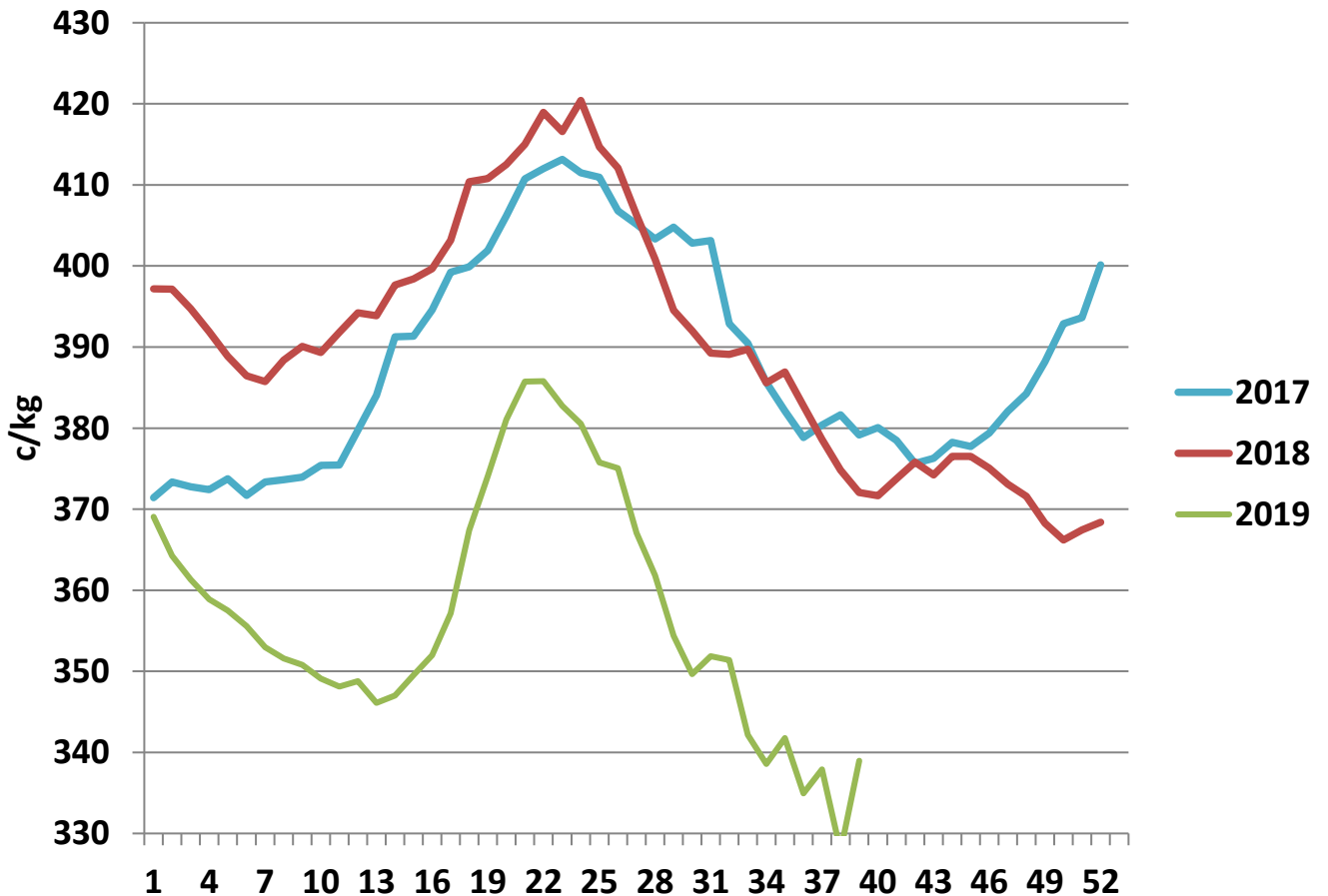
Livestock Pricing

	Ireland	NI	Britain	EU 14 Average	France	Germany
W/C 16/09/19	342	362.44	371.17	358.51	377	359.7

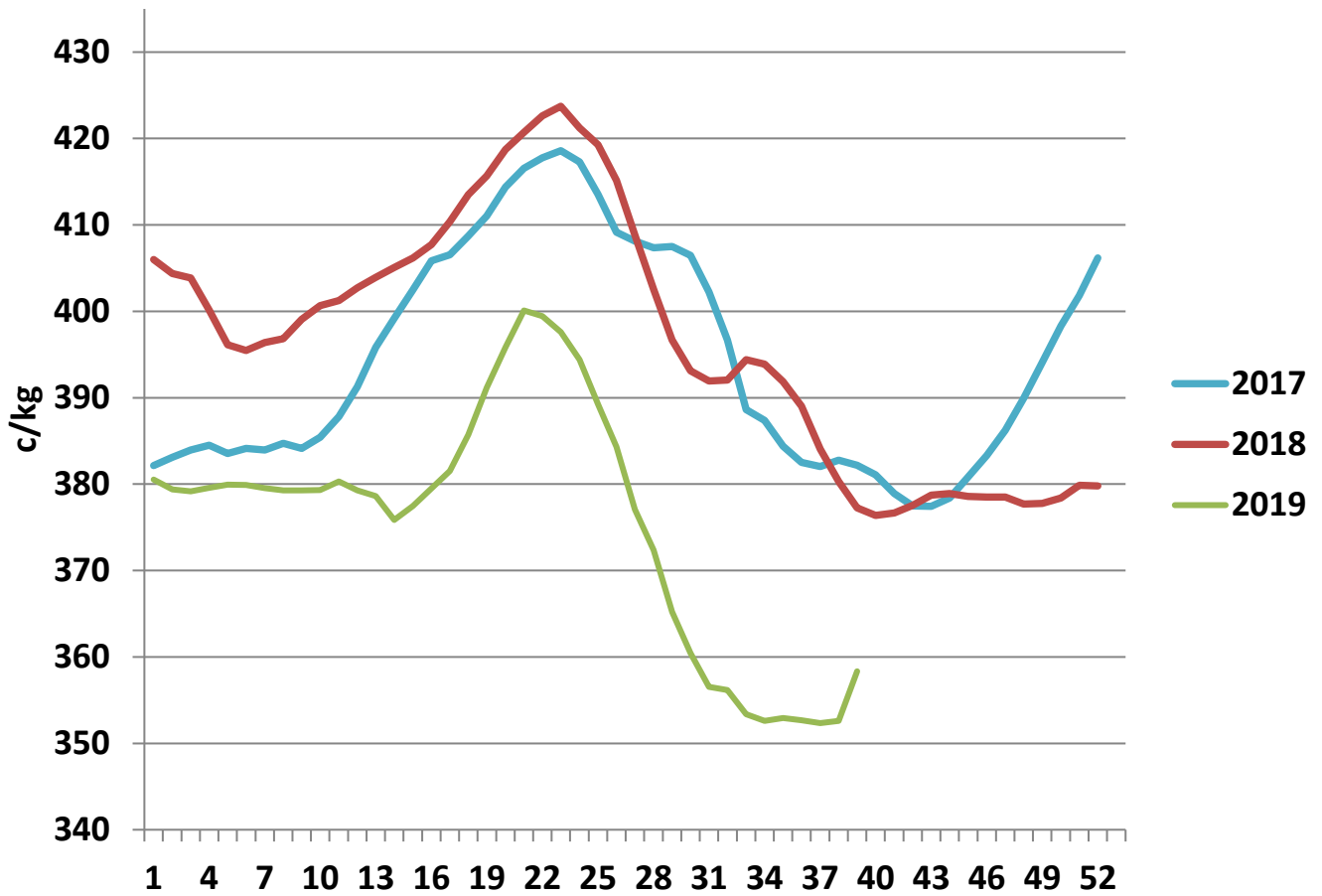
R3 Steer prices ex. VAT



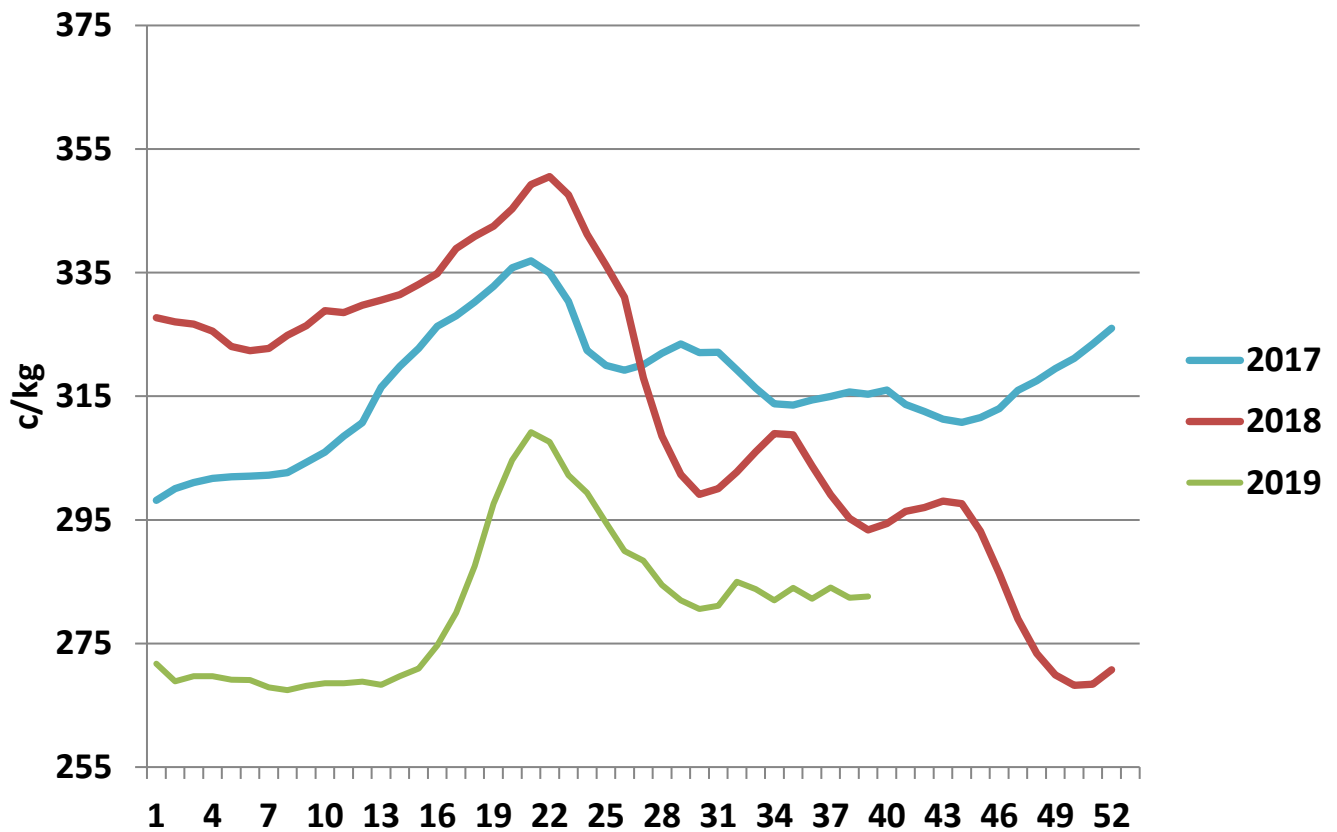
U3 Young Bull prices ex. VAT



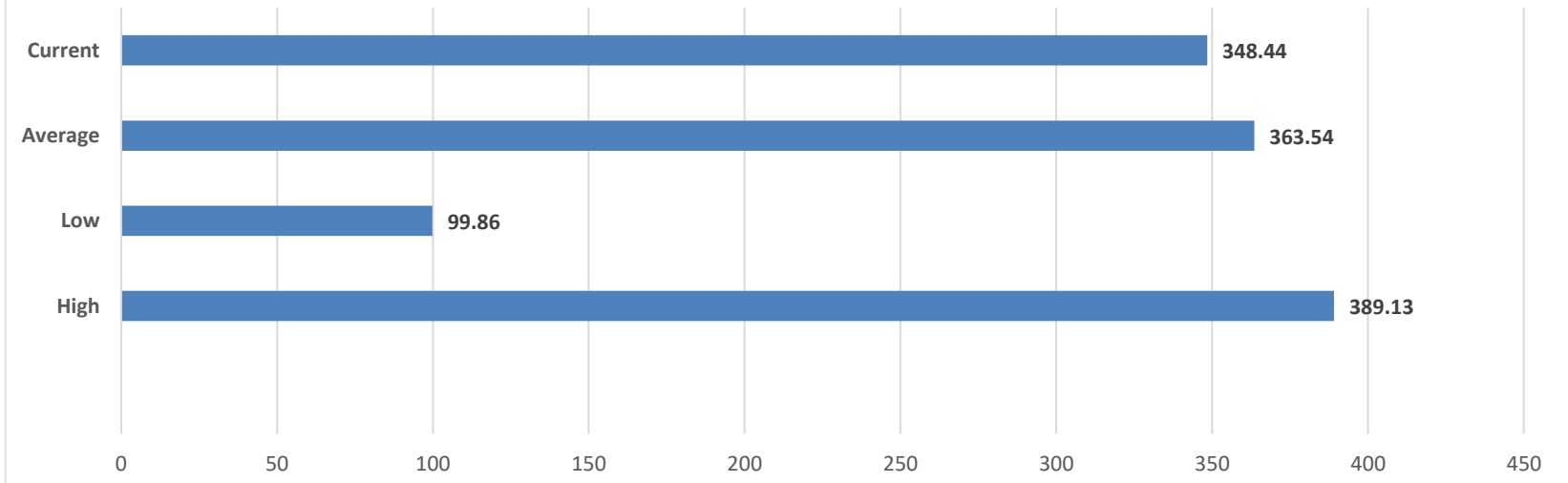
R3 Heifer prices ex. VAT



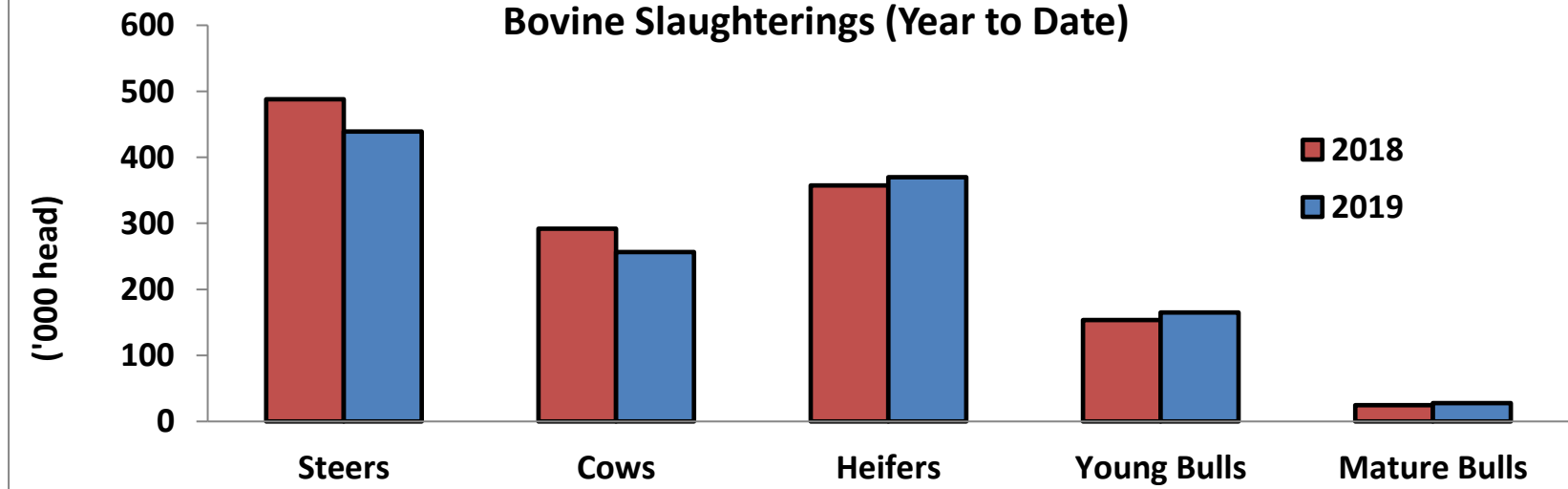
O4 Cow prices ex. VAT



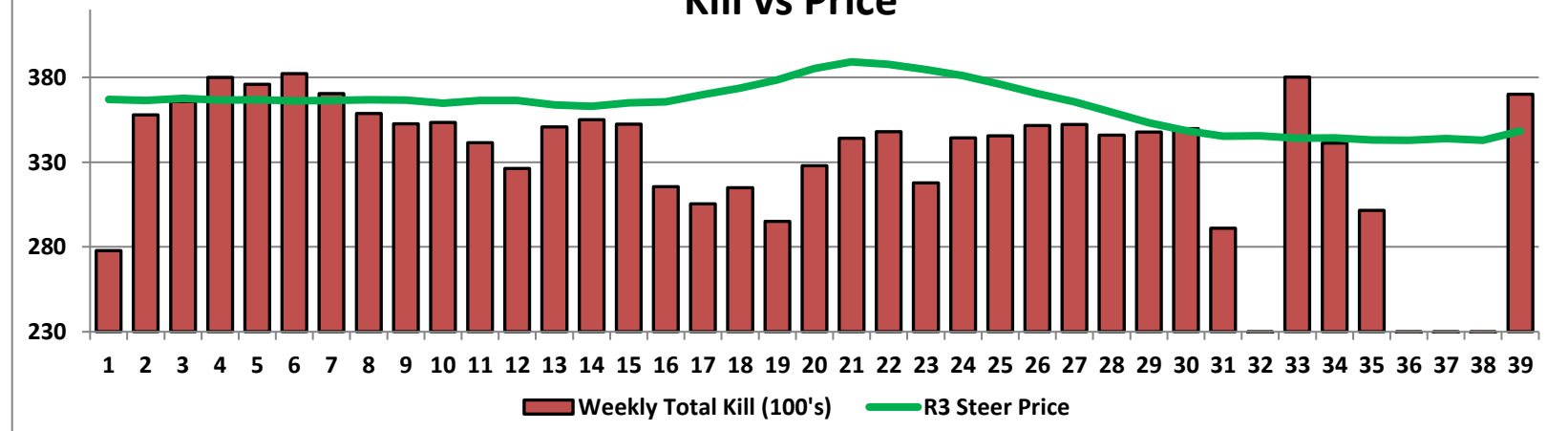
6 Month R3 Steer Statistics



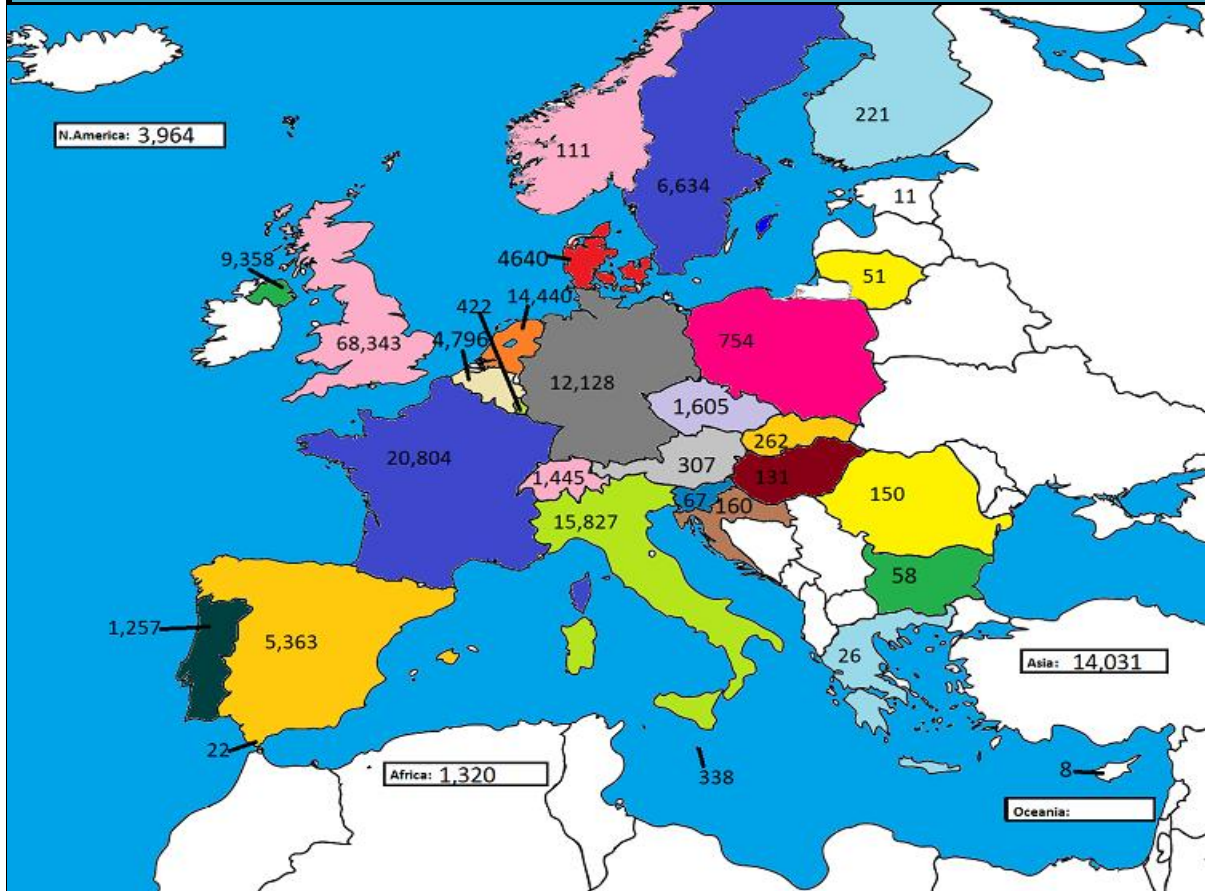
Bovine Slaughterings (Year to Date)



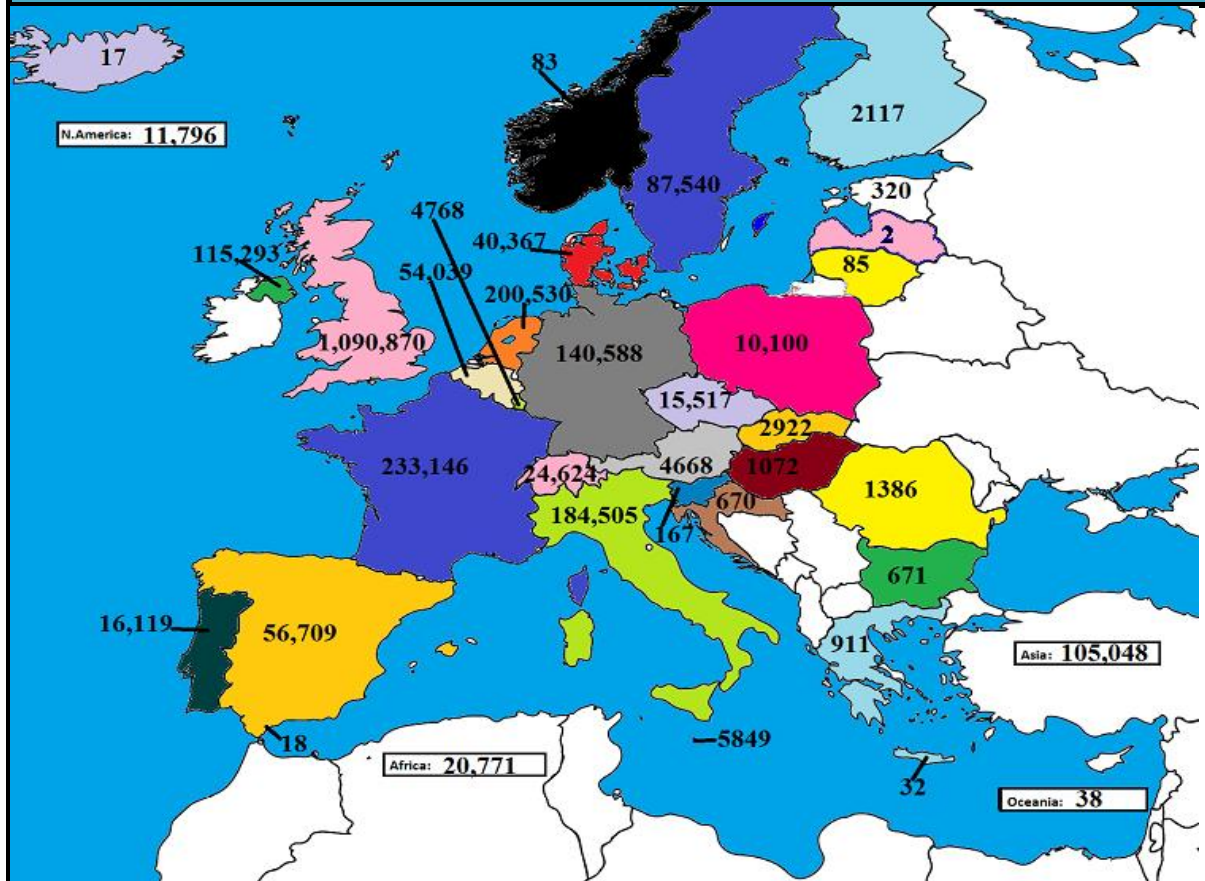
Kill vs Price



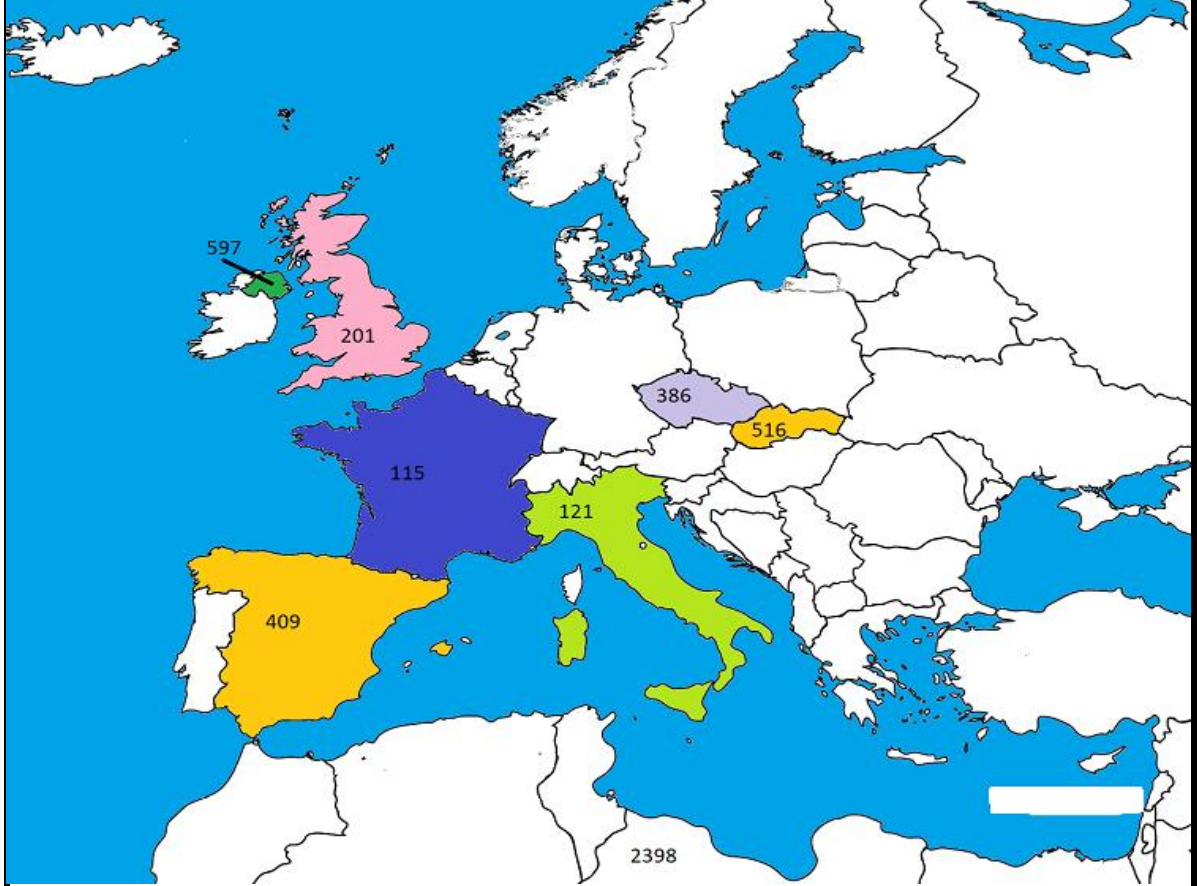
July 2019 Beef exports, €000 (CSO figures)



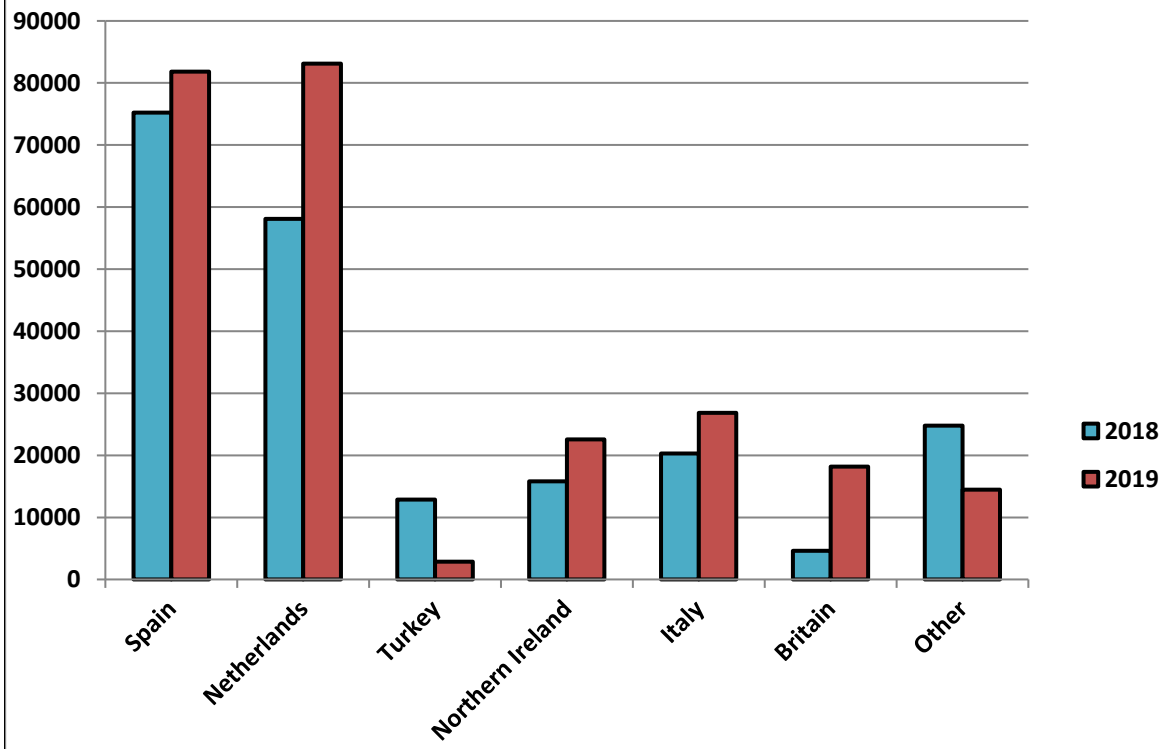
Cumulative beef exports to Dec 2018, €000 (CSO figures)



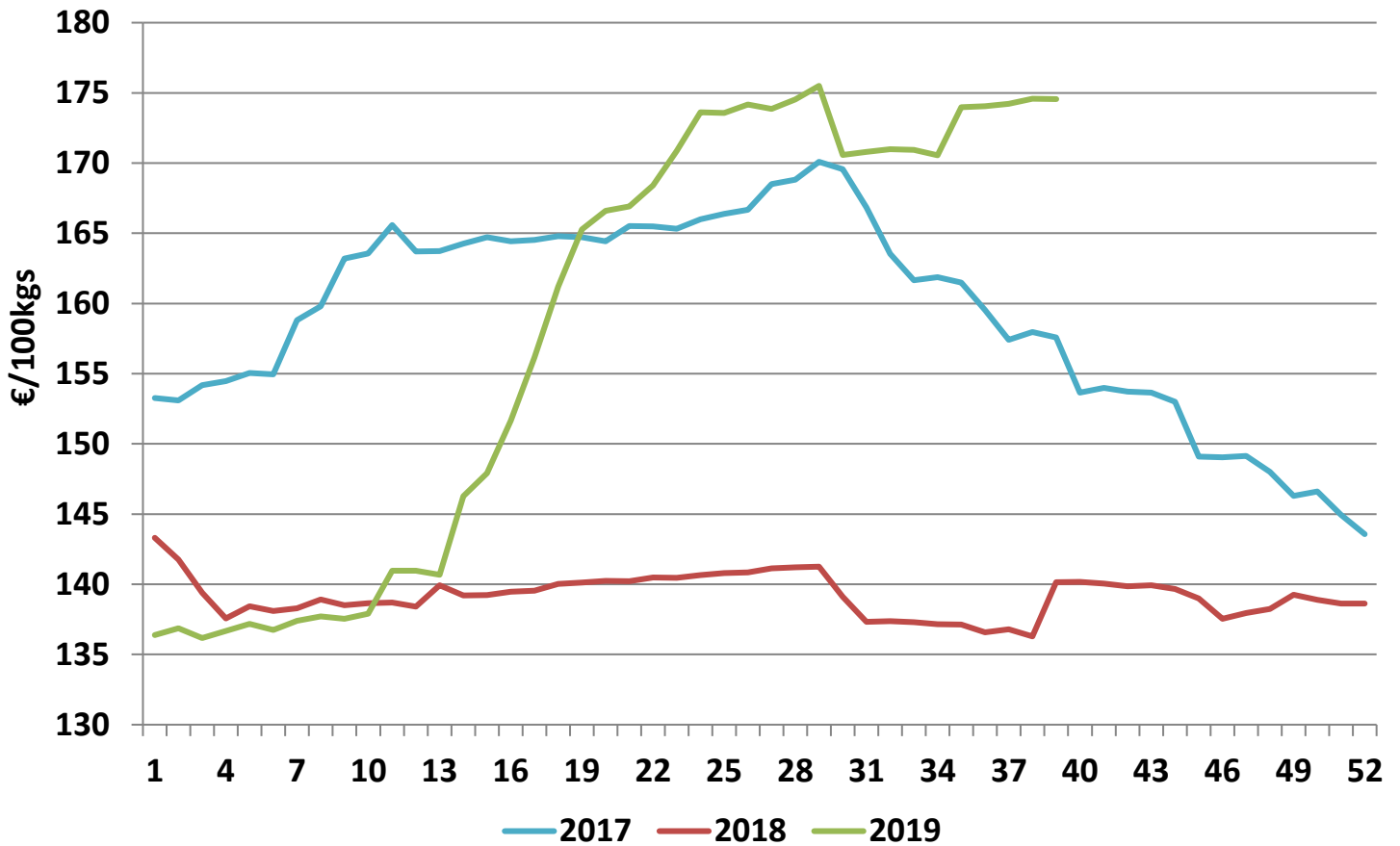
Cattle exported, w/c 16/09/19



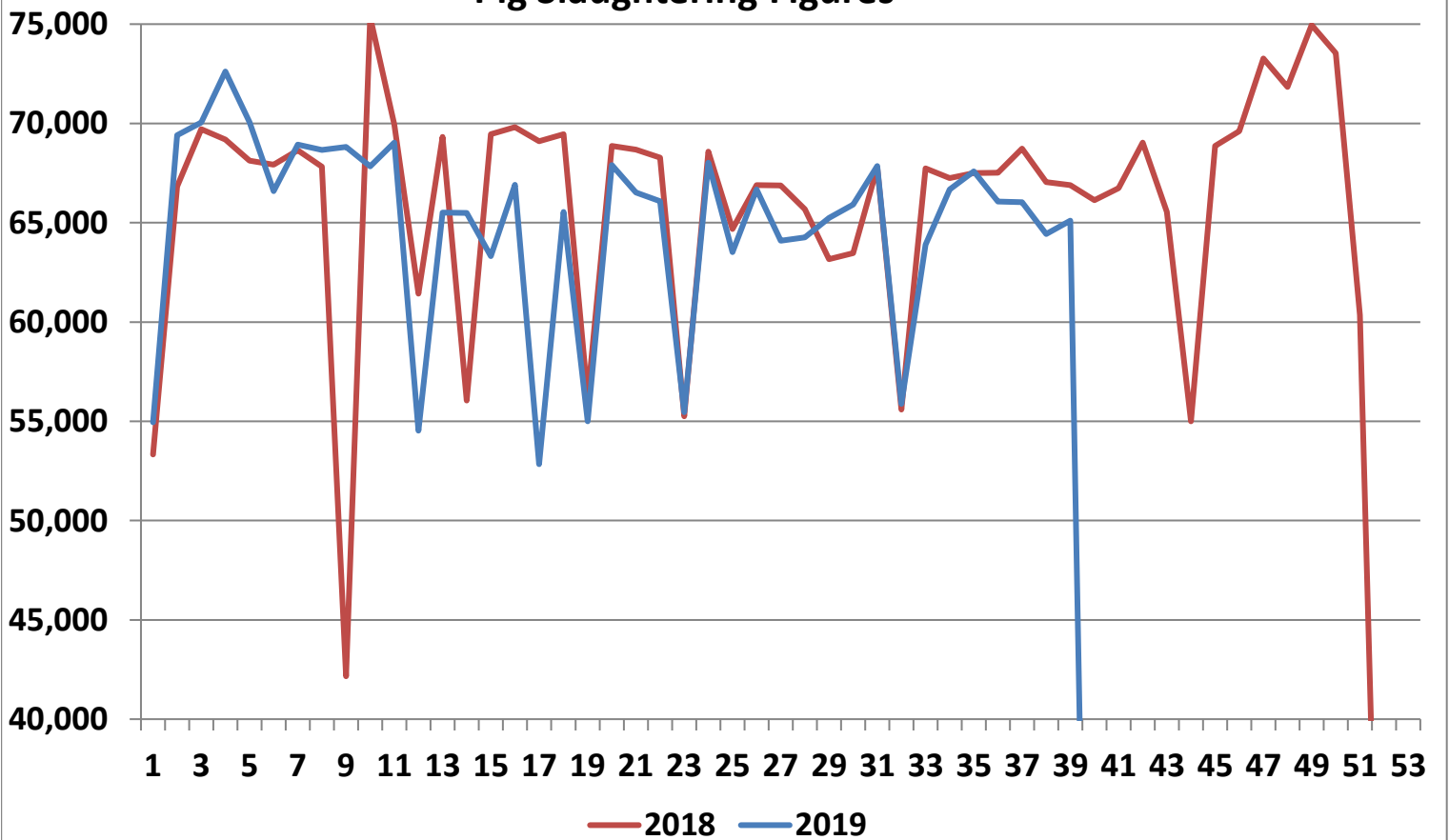
Cumulative cattle export figures, 2019



Average Grade E Pig Price



Pig Slaughtering Figures



Sheepmeat Information for Week 39

NOTE: EU PRICES
ARE PROVISIONAL AT
THE TIME OF
PUBLICATION AND
MAY NOT BE
REFLECTIVE OF THE
CURRENT PERIOD

Irish Prices €/100 kg	2019	2018	Change
Ave Factory Price	429.80	438.44	-2.0%
Ave Mart Price	377.46	370.92	1.8%
National Ave Price	414.1	418.19	-1.0%
YTD Ave	463.42	497.86	-6.9%

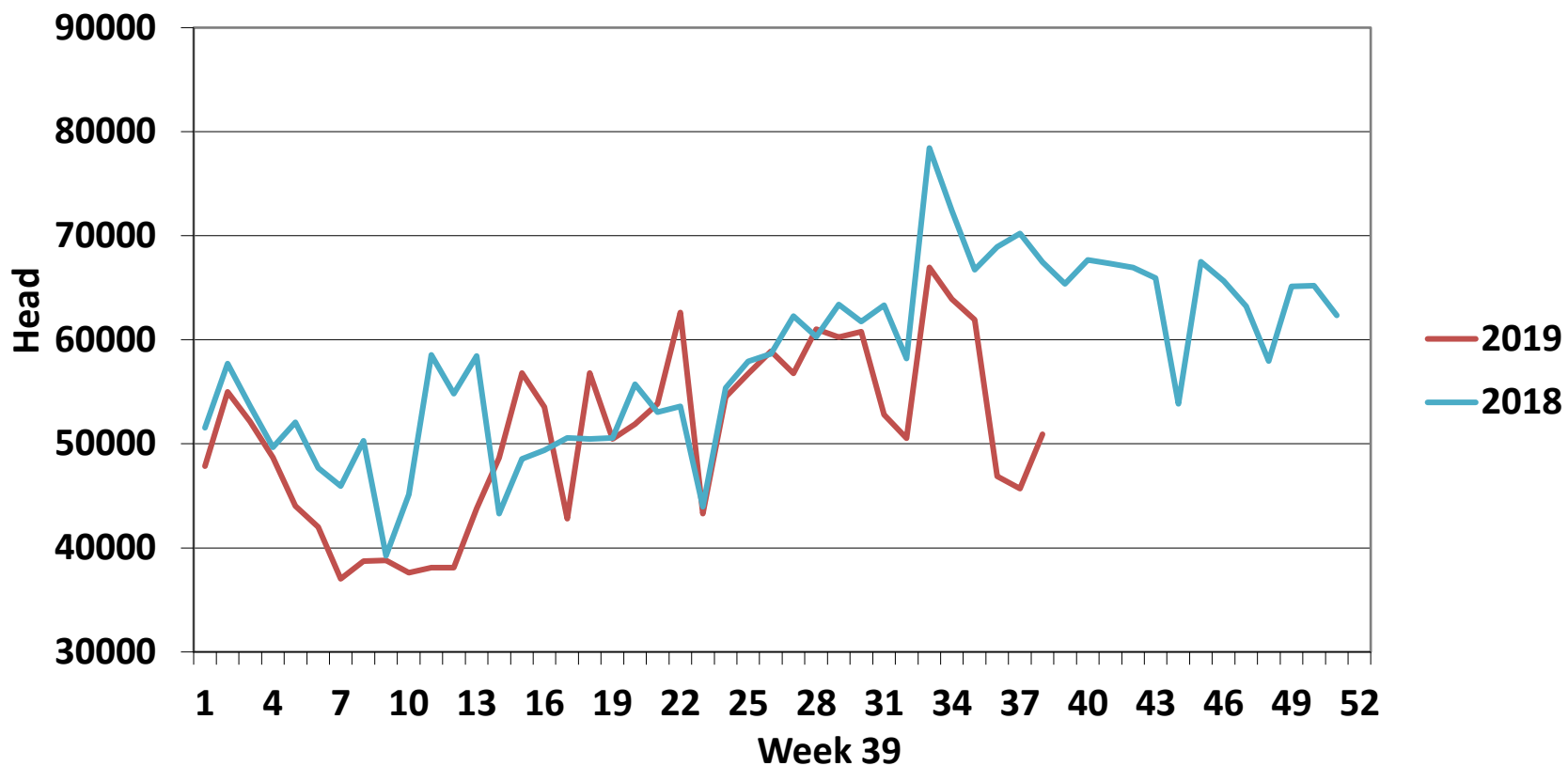
Slaughterings	2019	2018	Change
Weekly	66,643	65,380	2%
YTD	1,997,955	2,194,676	-9%

EU Market Rates Heavy Lambs	€/100kg	% of Commu Price
Belgium	473.5	106%
Denmark	512.7	114%
Germany	527.2	118%
Spain	516.2	115%
France	623.0	139%
Croatia	440.9	98%
Ireland	294.8	66%
Italy	578.0	129%
Cyprus	554.0	124%
Latvia	299.4	67%
Lithuania	391.9	87%
Netherlands	501.1	112%
Austria	541.0	121%
Poland	432.2	96%
Romania	191.2	43%
Finland	414.4	92%
Sweden	417.1	93%
Northern Ireland	369.9	83%
Great Britain	422.3	94%
United Kingdom	418.5	93%
Community	448.1	100%

**REPORT ON SLAUGHTERING AT SHEEP EXPORT PREMISES
WEEK 39**

CATEGORY	2019		2018		DIFFERENCE	
	Weekly	Cumulative	Weekly	Cumulative	Weekly	Cumulative
Lambs/Hoggets	212	738,086	119	828,802	93	90,716
Spring Lambs	56,339	968,563	51,798	991,709	4,541	23,146
Ewes and Rams	10,082	290,935	13,457	374,027	-3,375	83,092
Light Lambs	10	371	6	138	4	233
TOTAL	66,643	1,997,955	65,380	2,194,676	1,263	-196,721

Weekly Sheep Slaughtering



Ave. Price €/100 kg for Sheepmeat

