

Meat Market Report

30/09/19 - 06/10/19

Week

40



**An Roinn Talmhaíochta,
Bia agus Mara**

Department of Agriculture,
Food and the Marine

MARKET SUMMARY

Beef

Deadweight Prices c/100Kg (Including VAT)

	U3	U4	R3	R4	O3	O4	P+3
Steers	375.4	373.1	365.6	362.9	343.9	343.1	317.7
Heifers	390.0	387.7	376.3	374.2	358.7	355.0	323.6
Young Bulls	355.3	359.3	345.4	342.6	326.7	323.4	305.2
Cows			314.5	313.1	295.0	293.4	282.6

Liveweight Prices

*Bull Calf Average Price	€115.1 per head (Excluding VAT)
**Young Store Average Price	€213.0 per 100kg (Excluding VAT)
***Yearling (male & female) Price	€180.5 per 100kg (Excluding VAT)

* Aged 8-28 days ** Aged 180-364 days, Male & Female ***age 365-730 days

Slaughterings

37,648 cattle slaughtered this week, of which steers were 17,089 (45%), heifers 10,457 (28%), young bulls 2,358 (6%) and cows 7,212 (19%). Total YTD slaughter is 1,295,521, compared to 1,354,580 in 2018, a 4.4% decrease.

Live Trade

5,480 cattle were exported in the week commencing 23/09/2019, 1,875 to EU (Except NI). Live exports for 2019 amount to 256,780 compared to 212,755 in 2018, up 21% on 2018 levels.

*This data is provisional and subject to revision.

The next meeting of the Management Committee for the Common Organisation of Agricultural Markets (Animal Products Sector) is 17th October 2019

CONTENTS:

Page 2: Market Summary Beef
 Page 3: Market Summary Other Meats
 Page 4: Beef Price and Slaughter Summary
 Page 5: Comparative Beef Prices
 Page 6: Steer and Young Bull Price
 Page 7: Heifer and Cow Graphs
 Page 8: Price and Slaughter Graphs
 Page 9: Liveweight Beef Graphs

Page 10: Beef Export Maps
 Page 11: Beef Export Info
 Page 12: Pig price and slaughter graphs
 Page 13: Sheep prices and slaughter
 Page 15: Sheep price and slaughter graphs

MARKET SUMMARY

Pigmeat

Grade E Pig
Prices (Ex.
VAT)

The Grade E Pig price for week commencing 30/09/2019 was €178.56 per 100Kg compared to €140.17 in the same week last year, which represents a 27% increase.

Slaughtering

65,722 pigs were slaughtered in week 40 of which 1,450 were sows. The cumulative figure for pig slaughterings in 2019 is 2,600,005 which is a 1% decrease with the same point last year.

Sheepmeat

Sheepmeat
Prices (Ex.
VAT)

The national average price for the week commencing 30/09/2019 was €406.78 per 100Kg, a decrease of 2.6% over the same week last year.

Slaughtering

65,308 sheep were slaughtered at sheep export premises the week commencing 30/09/2019, compared to 67,663 in the same week of 2018. Sheep slaughterings for 2019 are 9% down on 2018 at 2,063,263 head.

Live Trade

Total live exports to European Countries stood at 6,227 head to the end of August 2019.

Poultry

Slaughtering

Cumulative poultry slaughterings for 2019* stand at 81,623,133 birds at the end of week 40, up 8% compared to the same period last year.

*Latest Figures are provisional and subject to change

Dead Weight Prices	W/C	W/C	Same week 2018	% change prev week	% change 2018
	30/09/19	23/09/19			
Steers (R3) (c/kg)	346.9	348.4	366.8	-0.5%	-5.4%
Heifers (R3) (c/kg)	357.0	358.3	376.4	-0.4%	-5.1%
Young Bulls (U3) (c/kg)	337.1	339.0	371.7	-0.6%	-9.3%
Cows (04) (c/kg)	278.4	282.6	294.4	-1.5%	-5.5%

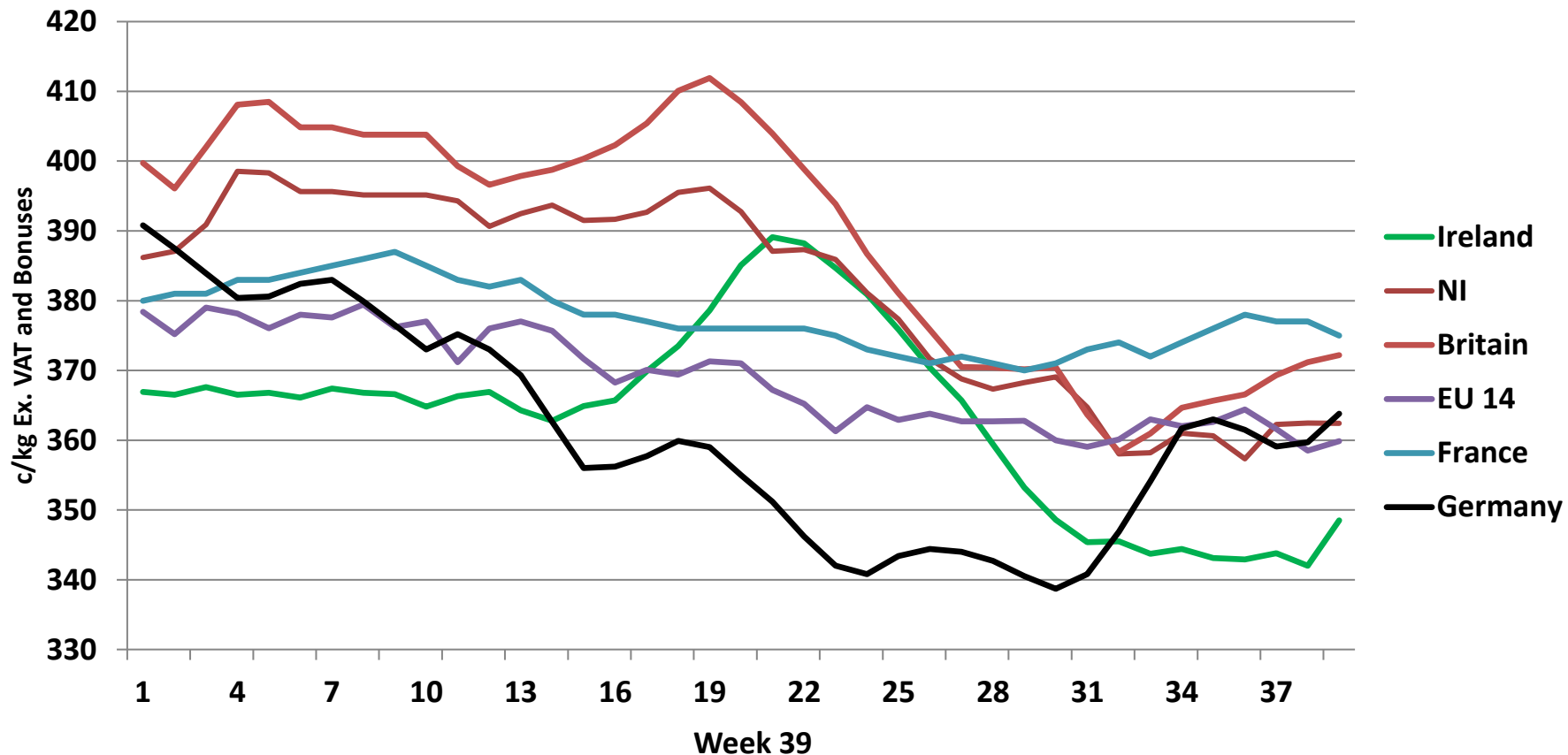
Live Weight Prices	W/C	W/C	Same week 2018	% change previous week	% change 2018
	30/09/19	23/09/19			
Yearlings (Male) (Aged 365 - 730 days) - (€/100Kg)	179	184	182	-2.7%	-1.6%
Yearlings (Female) (Aged 365 - 730 days) - (€/100Kg)	182	183	187	-0.5%	-2.7%
Young Stores (Male & Female) (Aged 180 - 364 days) - (€/100Kg)	213	211	224	0.9%	-4.9%
Bull Calf (€/head) Dairy	78.5	84.0	136.3	-6.6%	-42.4%
Bull Calf (€/head) Beef	151.7	166.2	197.1	-8.7%	-23.1%
Bull Calf (€/head) Average	115.1	125.1	166.7	-8.0%	-31.0%

Slaughter Figures	% of weekly figures	W/C	Same week 2018	Year to Date		Change 2019 v 2018	
		30-Sep-19		2019	2018	Head	%
Steers	45.4%	17,089	16,708	456,057	505,298	-49,241	-9.7%
Cows	19.2%	7,212	8,505	263,528	300,219	-36,691	-12.2%
Heifers	27.8%	10,457	9,636	380,176	367,272	12,904	3.5%
Young Bulls	6.3%	2,358	2,452	167,291	156,576	10,715	6.8%
Mature Bulls	1.4%	532	567	28,469	25,215	3,254	12.9%
Total	100%	37,648	37,868	1,295,521	1,354,580	-59,059	-4.4%

821

Live Exports	W/C	Same week 2018	W/C	Year to Date		Change 2019 v 2018	
	23-Sep-19		16-Sep-19	2019	2018	Head	%
Northern Ireland	749	736	597	23,556	14,721	8,835	60%
EU Except NI	1,875	2,264	1,748	219,800	180,043	39,757	22%
Third Countries	2,856	0	2,398	13,424	17,991	-4,567	-
Total	5,480	3,000	4,743	256,780	212,755	44,025	21%
Calves YTD:	192,546			Adult YTD:Cattle		64,097	

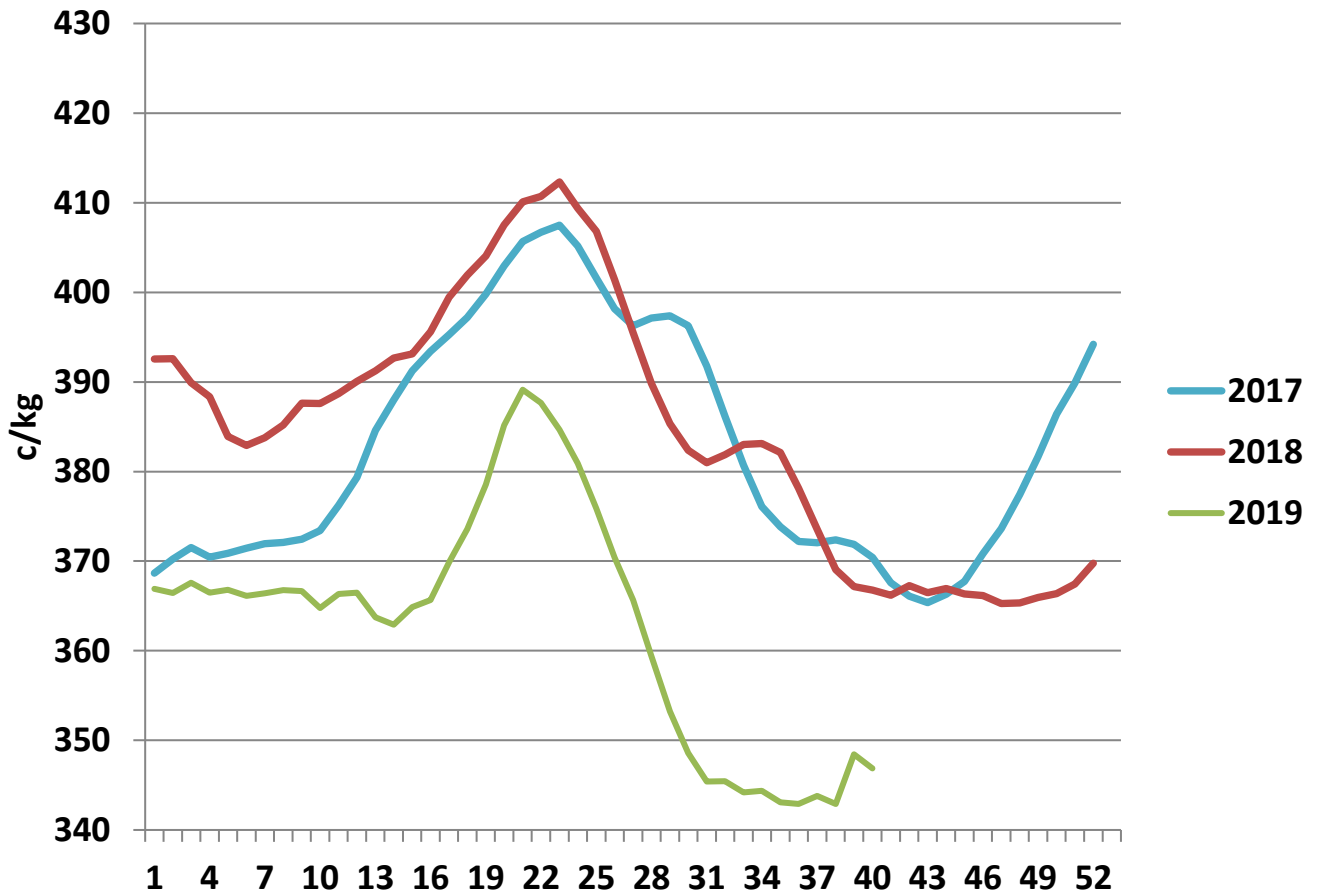
Irish Deadweight Cattle Prices vs Selected Other Markets, 2019



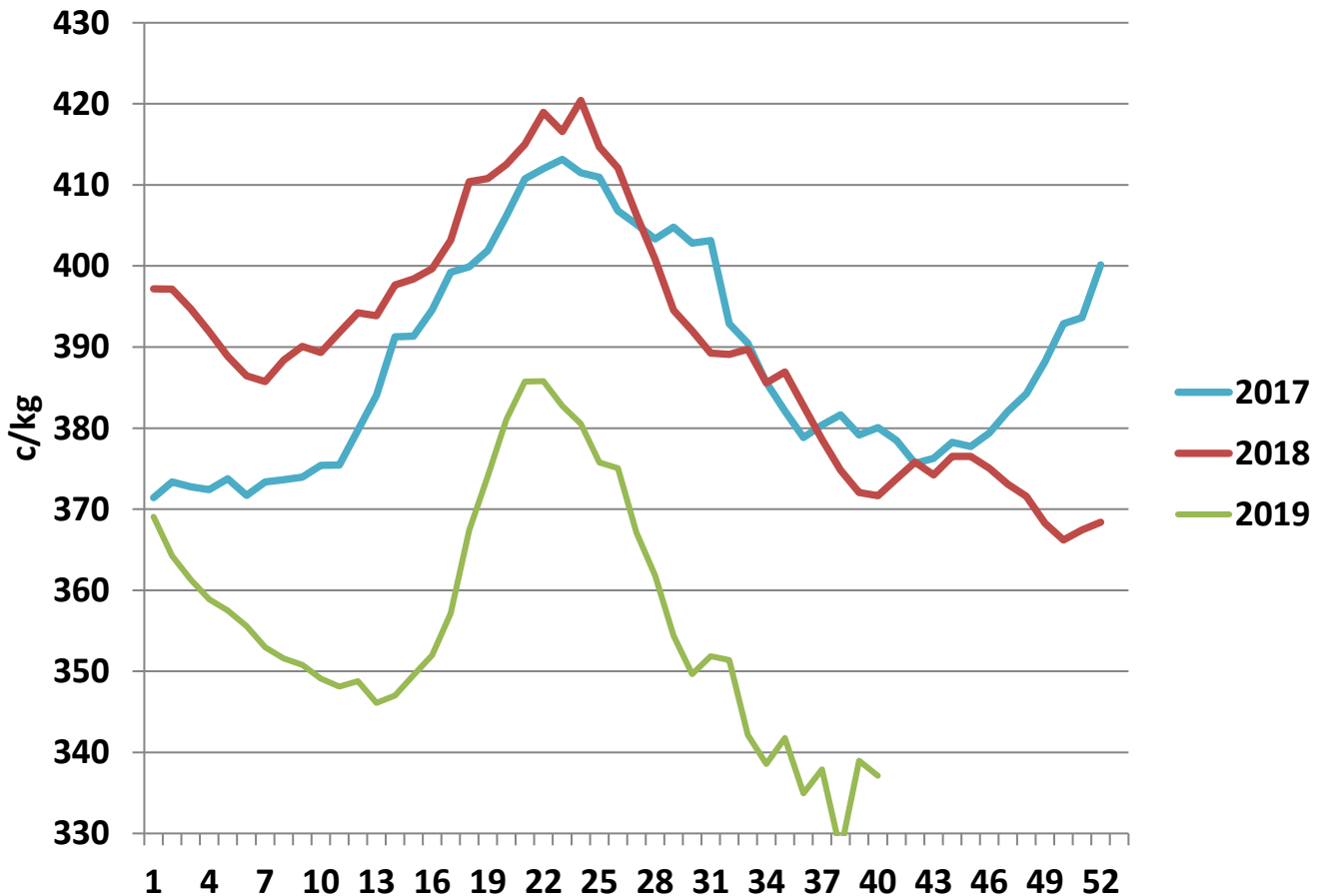
Livestock Pricing

	Ireland	NI	Britain	EU 14 Average	France	Germany
W/C 23/09/19	348.5	362.41	372.21	359.86	375	363.8

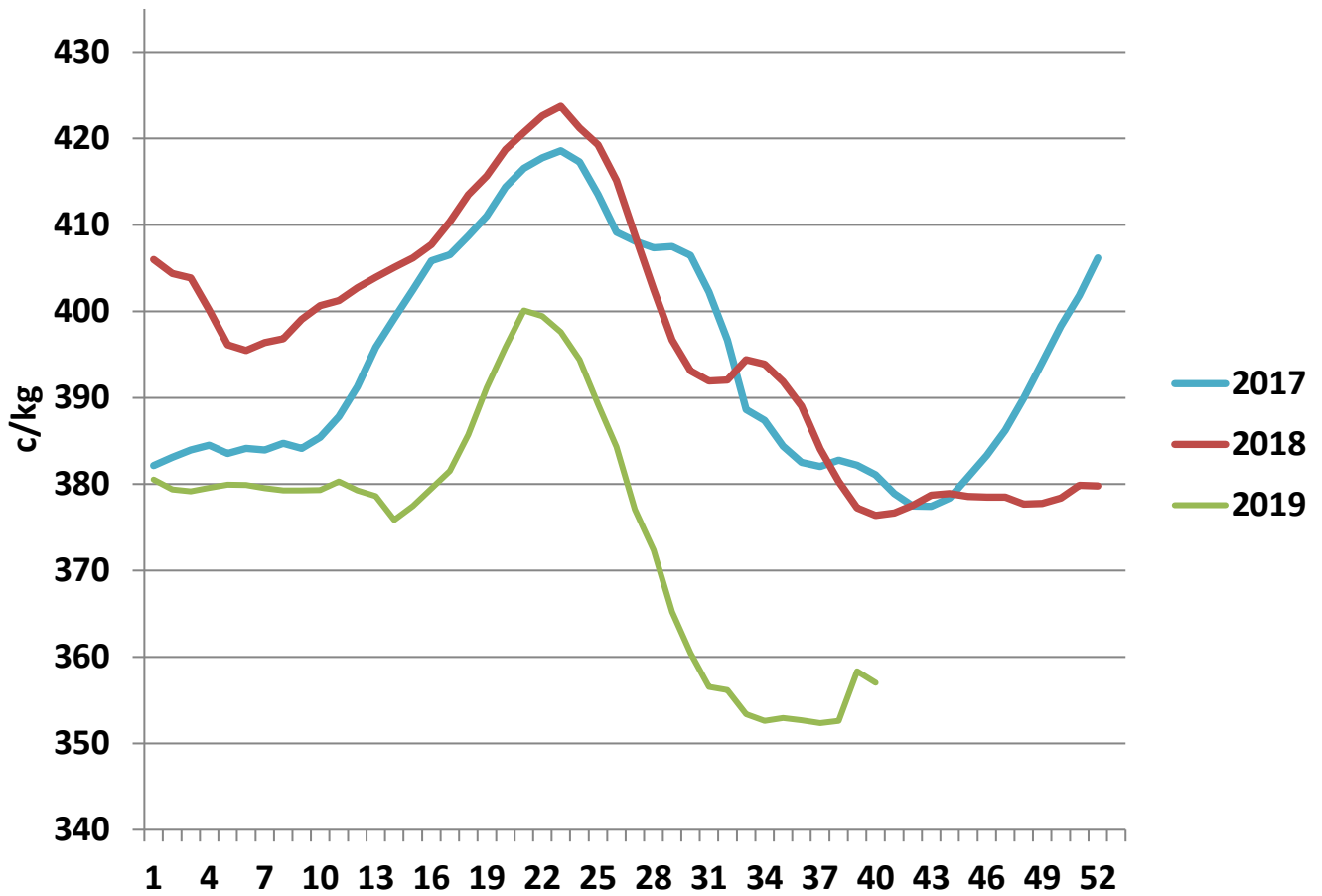
R3 Steer prices ex. VAT



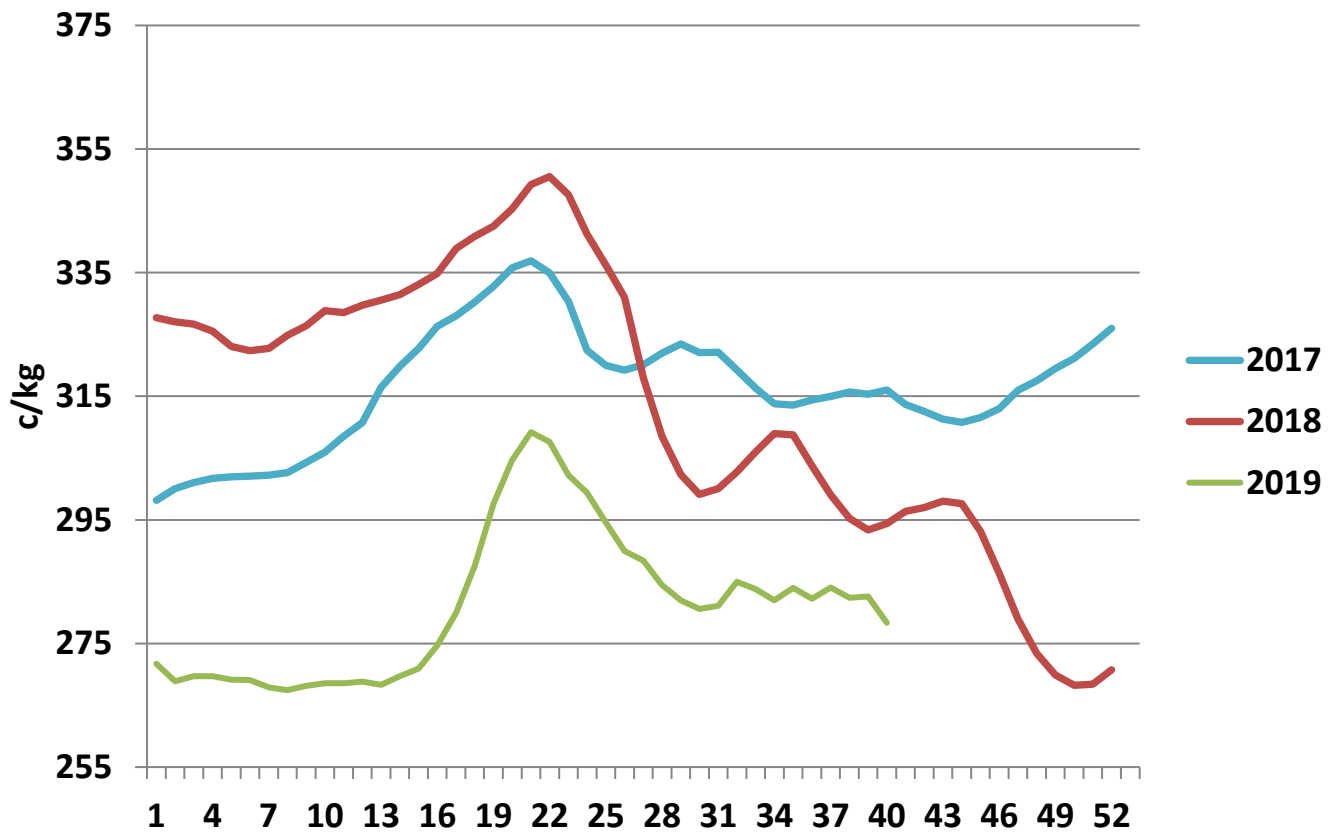
U3 Young Bull prices ex. VAT



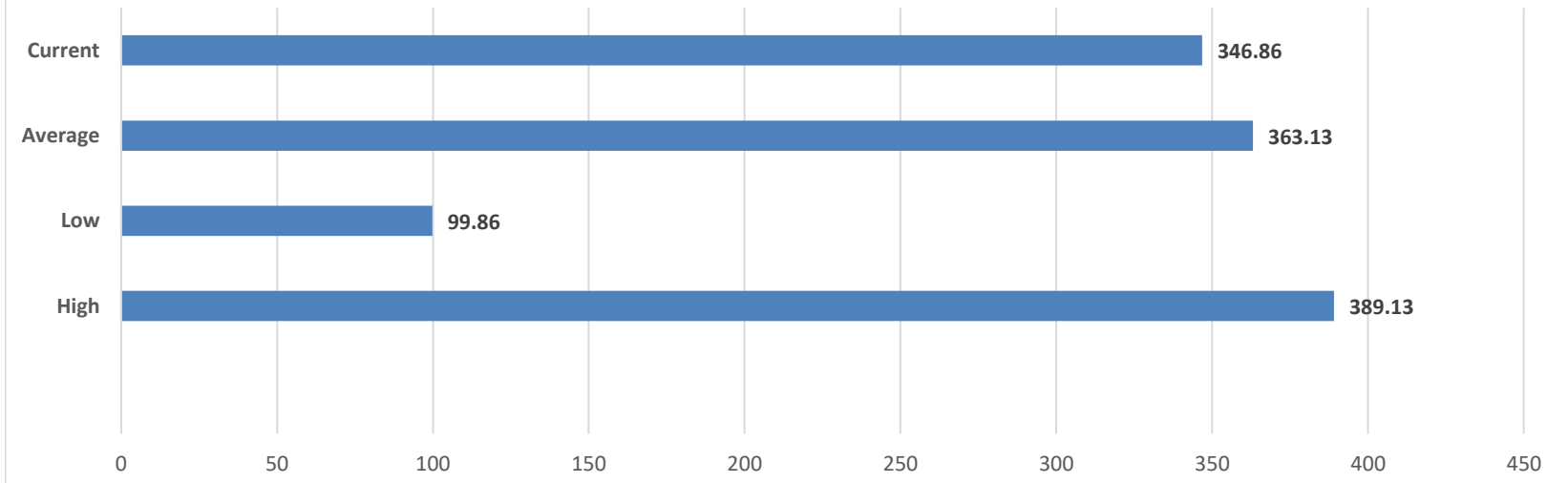
R3 Heifer prices ex. VAT



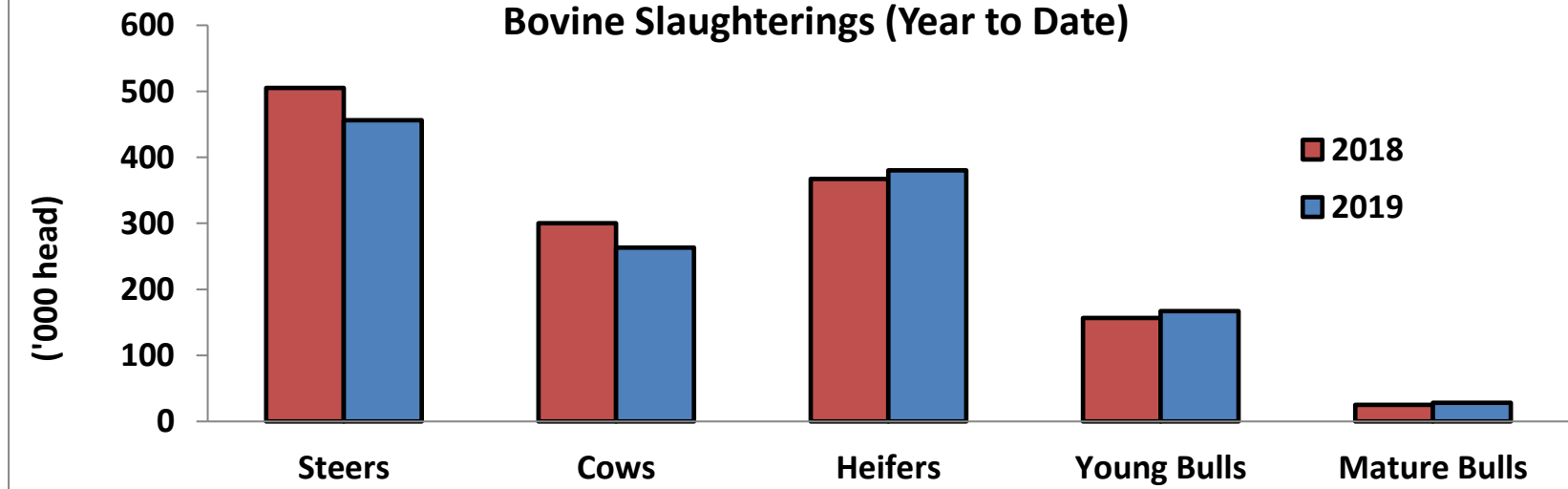
O4 Cow prices ex. VAT



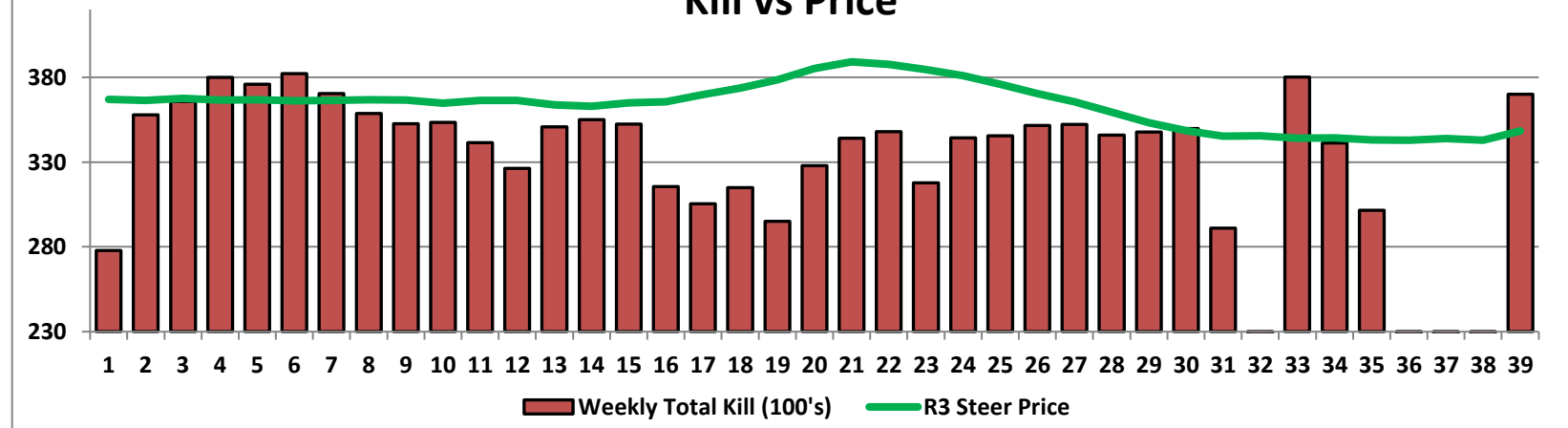
6 Month R3 Steer Statistics



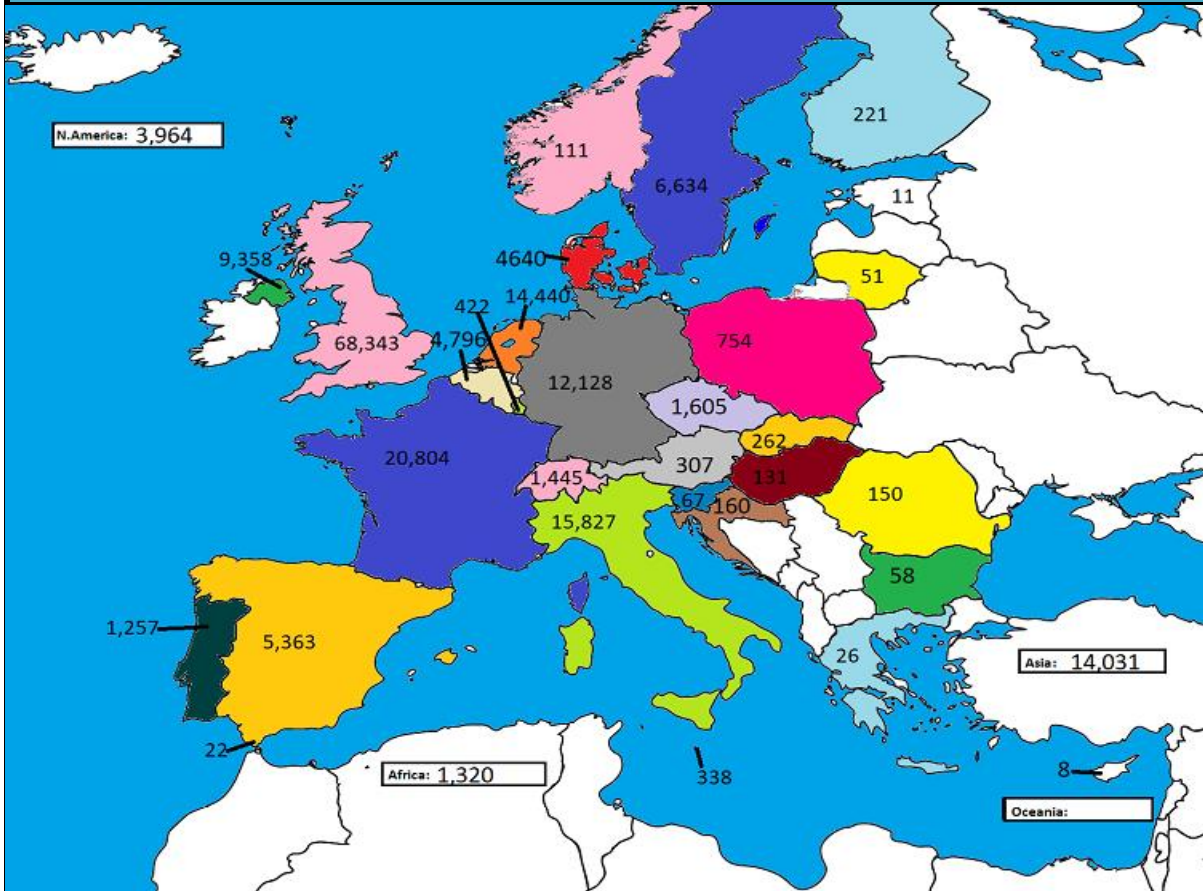
Bovine Slaughterings (Year to Date)



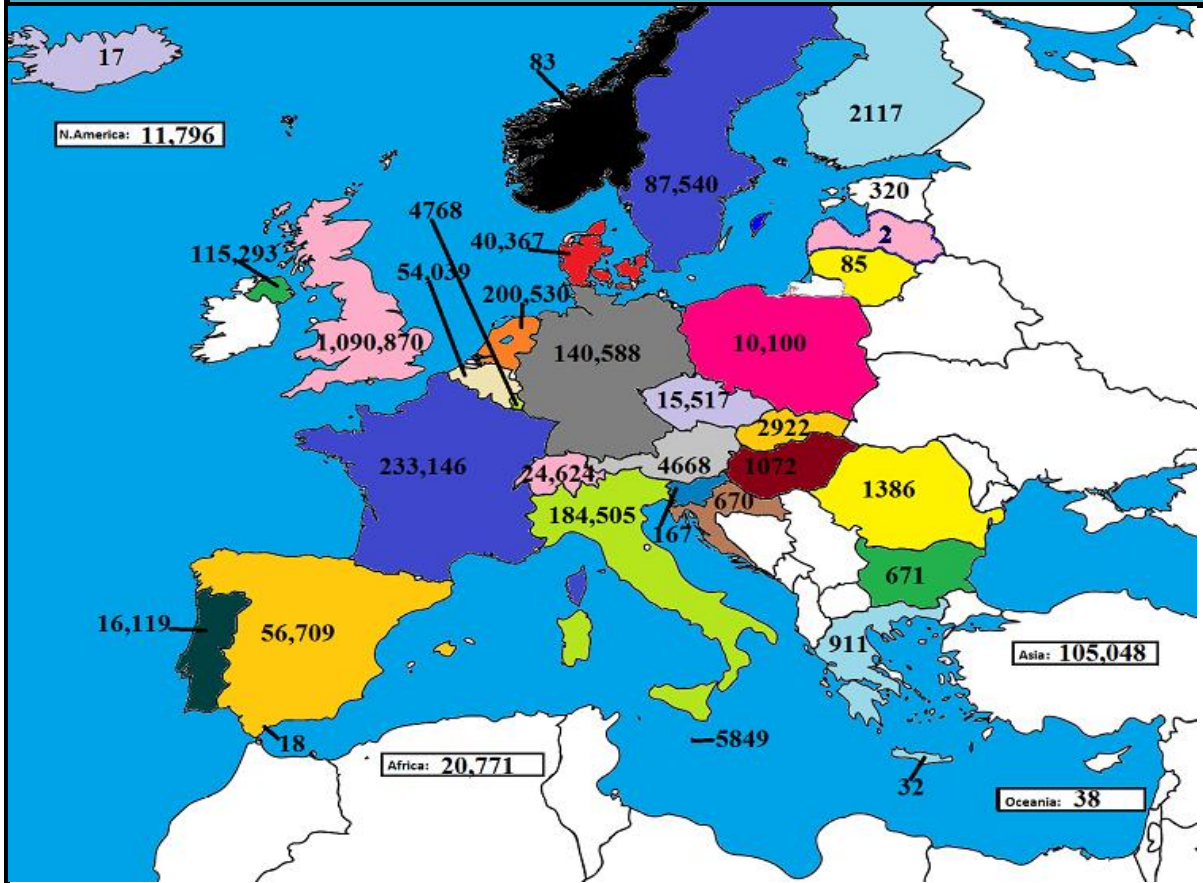
Kill vs Price



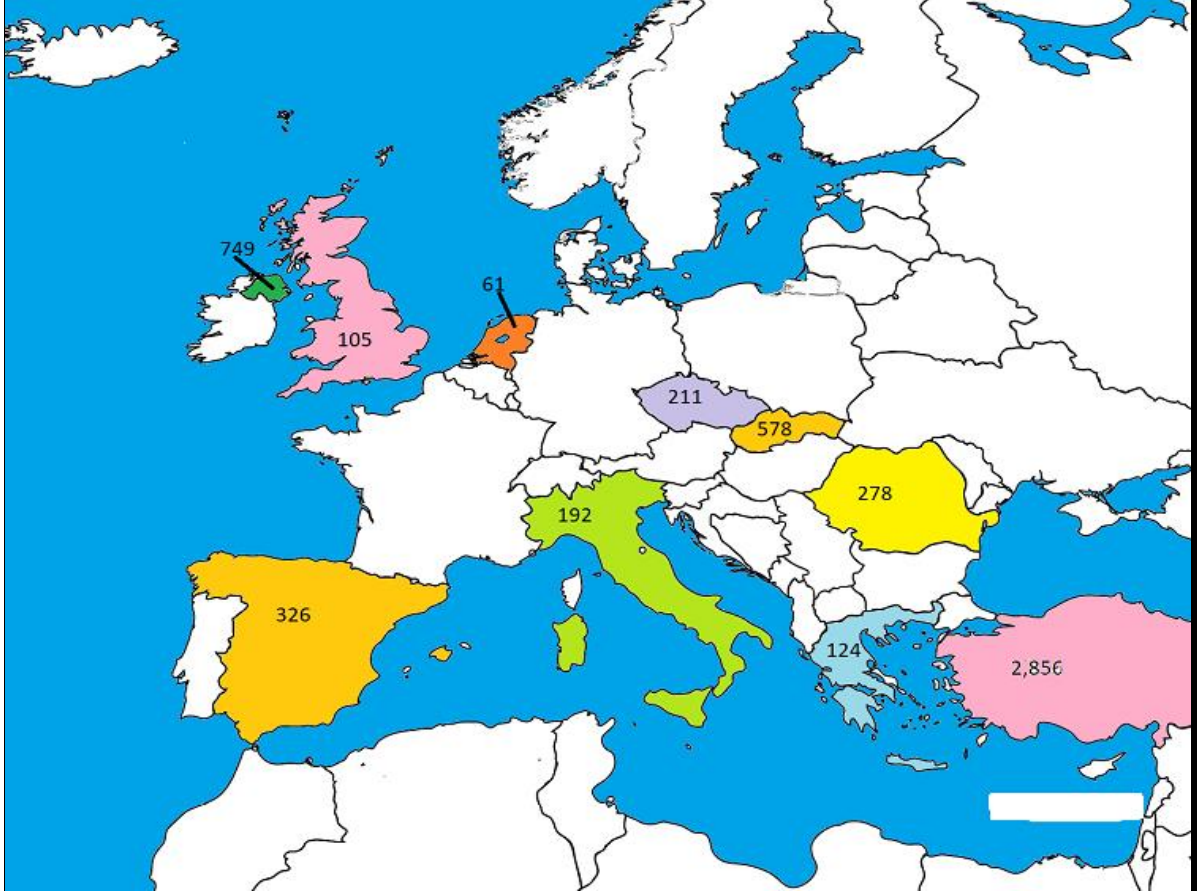
July 2019 Beef exports, €000 (CSO figures)



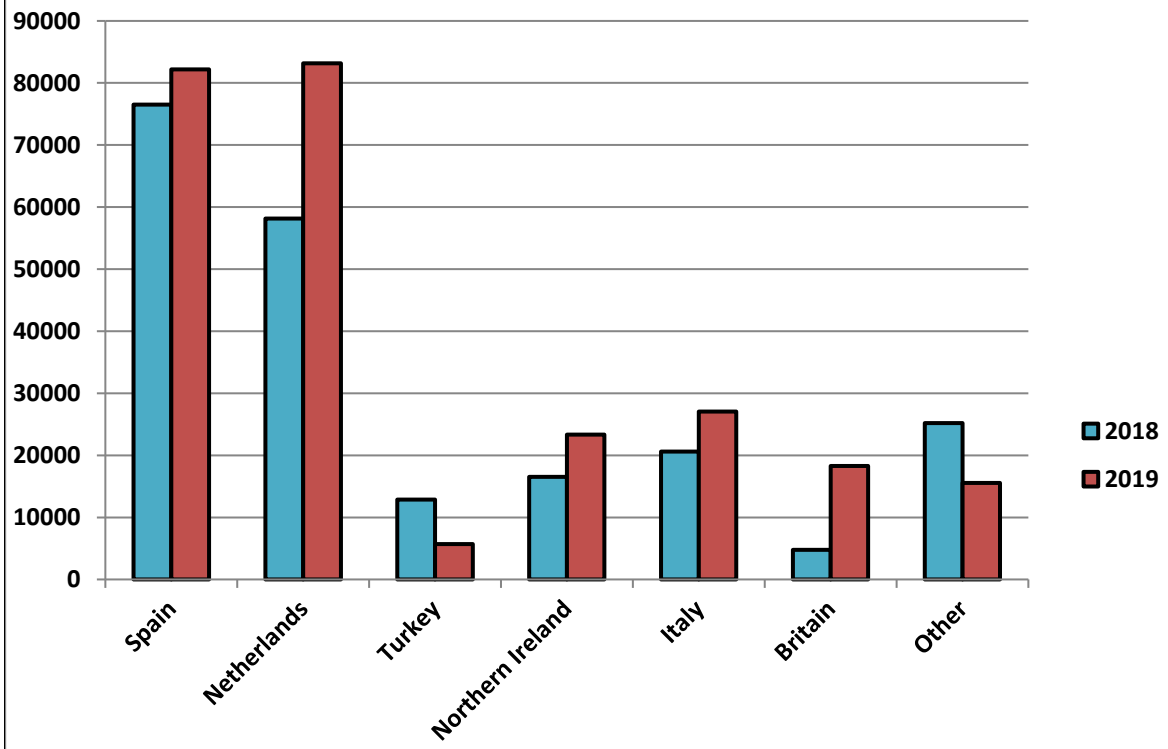
Cumulative beef exports to Dec 2018, €000 (CSO figures)



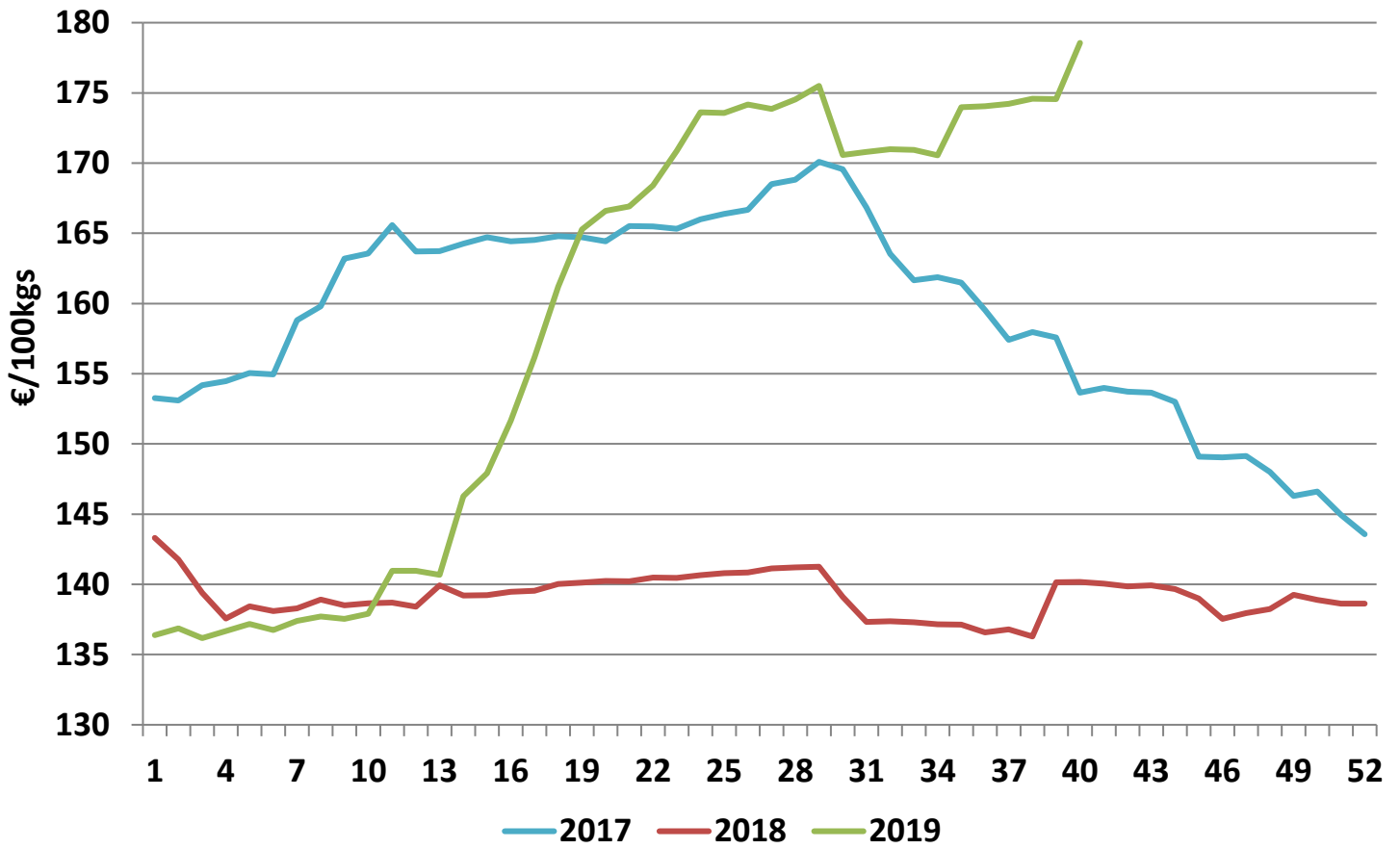
Cattle exported, w/c 23/09/19



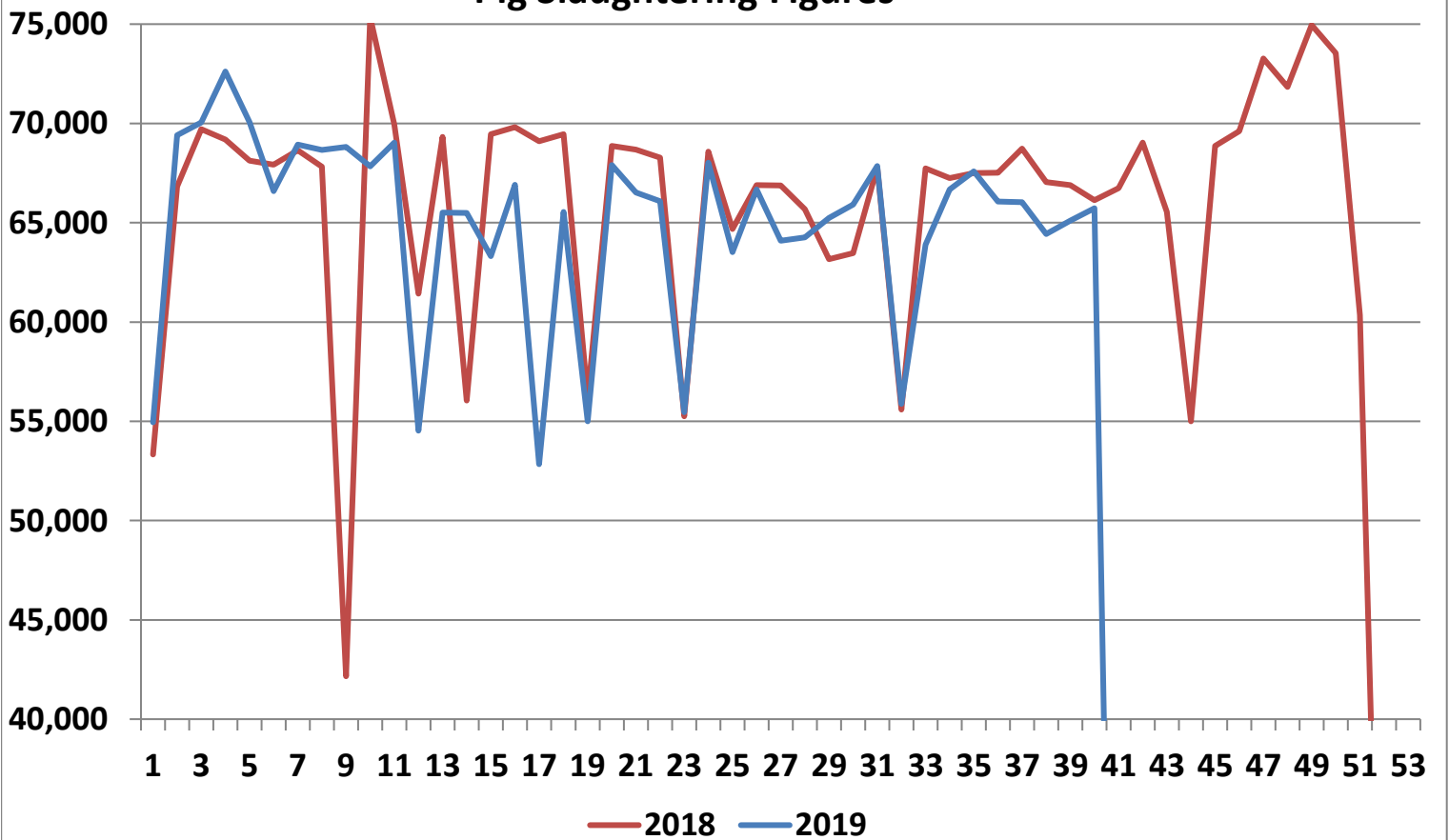
Cumulative cattle export figures, 2019



Average Grade E Pig Price



Pig Slaughtering Figures



Sheepmeat Information for Week 40

NOTE: EU PRICES
ARE PROVISIONAL AT
THE TIME OF
PUBLICATION AND
MAY NOT BE
REFLECTIVE OF THE
CURRENT PERIOD

Irish Prices €/100 kg	2019	2018	Change
Ave Factory Price	425.11	438.81	-3.1%
Ave Mart Price	364.00	368.32	-1.2%
National Ave Price	406.78	417.67	-2.6%
YTD Ave	462.00	495.86	-6.8%

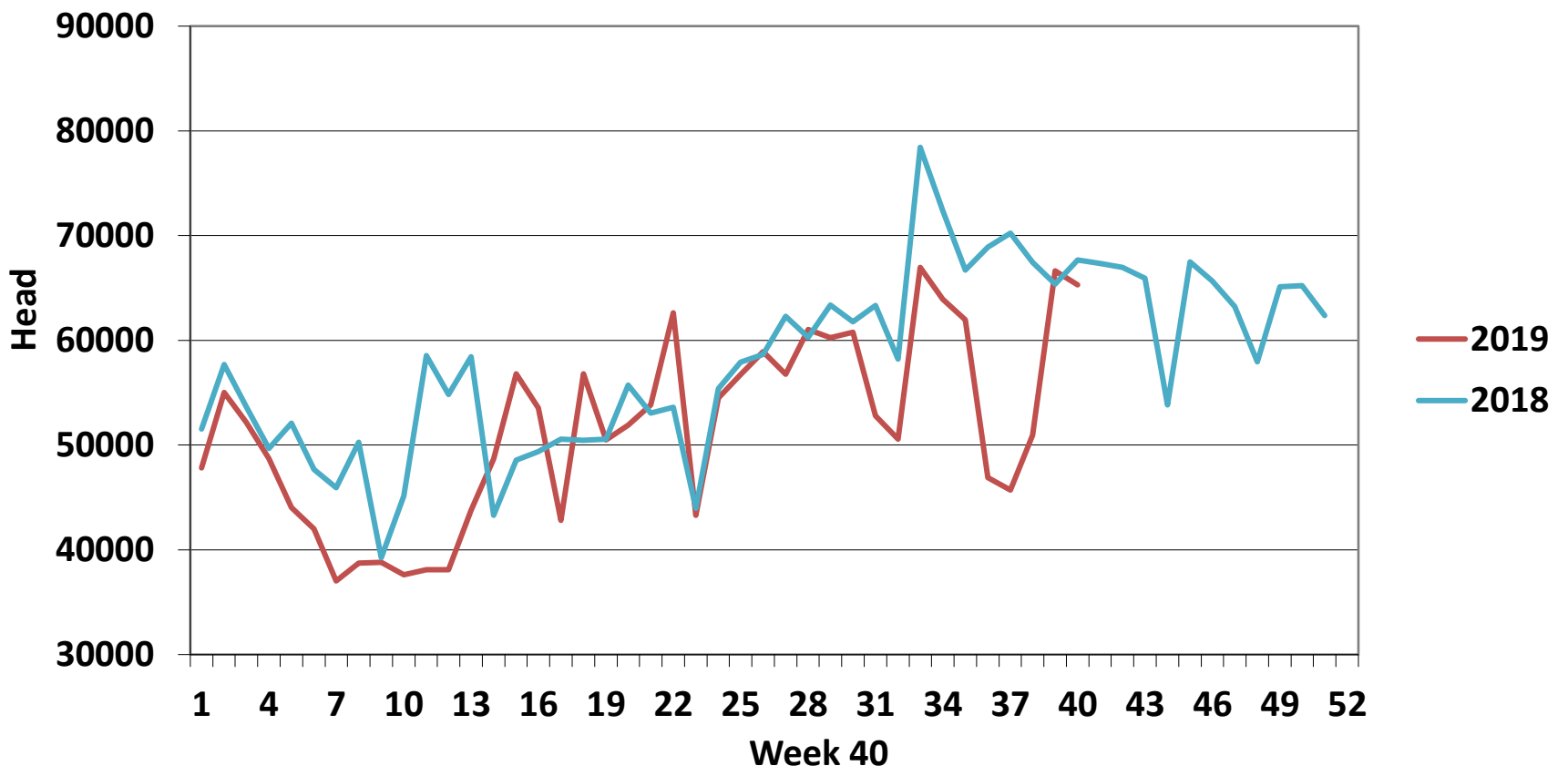
Slaughtering	2019	2018	Change
Weekly	65,308	67,663	-3%
YTD	2,063,263	2,262,339	-9%

EU Market Rates Heavy Lambs	€/100kg	% of Community Price
Belgium	465.8	101%
Denmark	512.7	111%
Germany	530.3	115%
Spain	531.9	116%
France	618.0	134%
Croatia	525.0	114%
Ireland	406.8	88%
Italy	586.0	127%
Cyprus	603.0	131%
Latvia	335.4	73%
Lithuania	361.7	79%
Netherlands	487.0	106%
Austria	558.0	121%
Poland	429.6	93%
Romania	195.9	43%
Finland	414.4	90%
Sweden	429.6	93%
Northern Ireland	358.0	78%
Great Britain	417.6	91%
United Kingdom	413.4	90%
Community	459.9	100%

**REPORT ON SLAUGHTERING AT SHEEP EXPORT PREMISES
WEEK 40**

CATEGORY	2019		2018		DIFFERENCE	
	Weekly	Cumulative	Weekly	Cumulative	Weekly	Cumulative
Lambs/Hoggets	62	738,148	73	828,875	-11	90,727
Spring Lambs	53,844	1,022,407	54,911	1,046,620	-1,067	24,213
Ewes and Rams	11,387	302,322	12,678	386,705	-1,291	84,383
Light Lambs	15	386	1	139	14	247
TOTAL	65,308	2,063,263	67,663	2,262,339	-2,355	-199,076

Weekly Sheep Slaughtering



Ave. Price €/100 kg for Sheepmeat

