

Meat Market Report

07/10/19 - 13/10/19

Week

41



**An Roinn Talmhaíochta,
Bia agus Mara**

Department of Agriculture,
Food and the Marine

MARKET SUMMARY

Beef

Deadweight Prices c/100Kg (Including VAT)

	U3	U4	R3	R4	O3	O4	P+3
Steers	372.0	369.0	365.0	362.0	344.0	343.0	317.0
Heifers	386.0	382.0	375.0	372.0	359.0	356.0	319.0
Young Bulls	353.0	351.0	341.0	340.0	323.0	329.0	307.0
Cows			312.0	310.0	289.0	289.0	276.0

Liveweight Prices

*Bull Calf Average Price	€141.5 per head (Excluding VAT)
**Young Store Average Price	€212.0 per 100kg (Excluding VAT)
***Yearling (male & female) Price	€179.0 per 100kg (Excluding VAT)

* Aged 8-28 days ** Aged 180-364 days, Male & Female ***age 365-730 days

Slaughterings

37,586 cattle slaughtered this week, of which steers were 16,621 (44%), heifers 11,138 (30%), young bulls 2,520 (7%) and cows 6,827 (18%). Total YTD slaughter is 1,333,107, compared to 1,393,270 in 2018, a 4.3% decrease.

Live Trade

3,292 cattle were exported in the week commencing 07/10/2019, 2,685 to EU (Except NI). Live exports for 2019 amount to 263,405 compared to 218,205 in 2018, up 21% on 2018 levels.

*This data is provisional and subject to revision.

The next meeting of the Management Committee for the Common Organisation of Agricultural Markets (Animal Products Sector) is 17th October 2019

CONTENTS:

Page 2: Market Summary Beef
 Page 3: Market Summary Other Meats
 Page 4: Beef Price and Slaughter Summary
 Page 5: Comparative Beef Prices
 Page 6: Steer and Young Bull Price
 Page 7: Heifer and Cow Graphs
 Page 8: Price and Slaughter Graphs
 Page 9: Liveweight Beef Graphs

Page 10: Beef Export Maps
 Page 11: Beef Export Info
 Page 12: Pig price and slaughter graphs
 Page 13: Sheep prices and slaughter
 Page 15: Sheep price and slaughter graphs

MARKET SUMMARY

Pigmeat

Grade E Pig
Prices (Ex.
VAT)

The Grade E Pig price for week commencing 07/10/2019 was €178.40 per 100Kg compared to €140.04 in the same week last year, which represents a 27% increase.

Slaughtering

67,509 pigs were slaughtered in week 41 of which 1,940 were sows. The cumulative figure for pig slaughterings in 2019 is 2,667,514 which is a 1% decrease with the same point last year.

Sheepmeat

Sheepmeat
Prices (Ex.
VAT)

The national average price for the week commencing 07/10/2019 was €405.75 per 100Kg, a decrease of 4% over the same week last year.

Slaughtering

66,233 sheep were slaughtered at sheep export premises the week commencing 07/10/2019, compared to 67,331 in the same week of 2018. Sheep slaughterings for 2019 are 9% down on 2018 at 2,129,496 head.

Live Trade

Total live exports to European Countries stood at 6,227 head to the end of August 2019.

Poultry

Slaughtering

Cumulative poultry slaughterings for 2019* stand at 83,638,748 birds at the end of week 41, up 8% compared to the same period last year.

*Latest Figures are provisional and subject to change

Dead Weight Prices	W/C	W/C	Same week 2018	% change prev week	% change 2018
	07/10/19	30/09/19	08/10/18		
Steers (R3) (c/kg)	345.8	346.9	366.2	-0.3%	-5.6%
Heifers (R3) (c/kg)	355.7	357.0	376.7	-0.4%	-5.6%
Young Bulls (U3) (c/kg)	334.6	337.1	373.7	-0.7%	-10.5%
Cows (04) (c/kg)	274.6	278.4	296.4	-1.4%	-7.4%

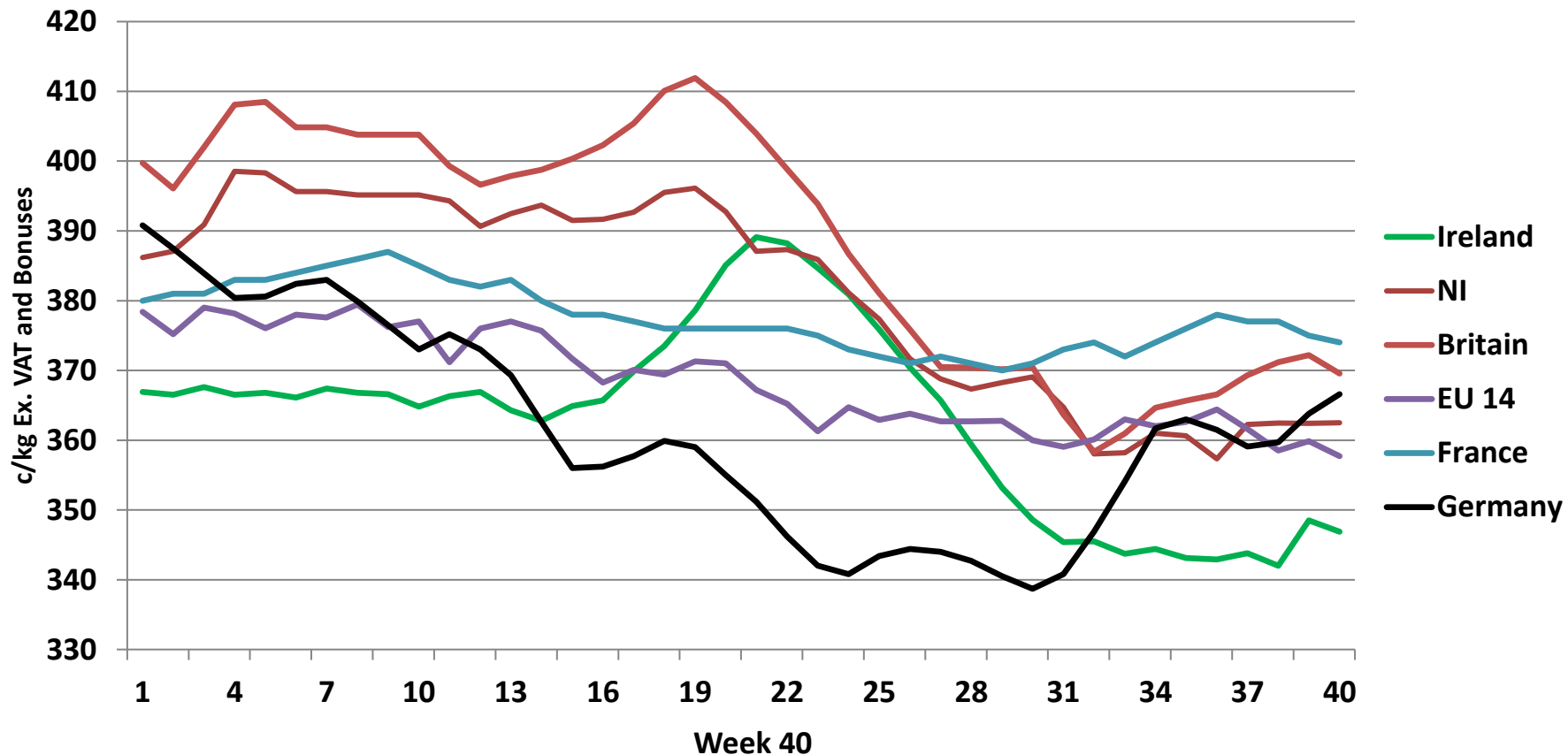
Live Weight Prices	W/C	W/C	Same week 2018	% change previous week	% change 2018
	07/10/19	30/09/19	08/10/18		
Yearlings (Male) (Aged 365 - 730 days) - (€/100Kg)	178	179	183	-0.6%	-2.7%
Yearlings (Female) (Aged 365 - 730 days) - (€/100Kg)	180	182	189	-1.1%	-4.8%
Young Stores (Male & Female) (Aged 180 - 364 days) - (€/100Kg)	212	213	222	-0.5%	-4.5%
Bull Calf (€/head) Dairy	96.4	78.5	104.3	22.8%	-7.6%
Bull Calf (€/head) Beef	186.7	151.7	231.0	23.1%	-19.2%
Bull Calf (€/head) Average	141.5	115.1	167.6	23.0%	-15.6%

Slaughter Figures	% of weekly figures	W/C	Same week 2018	Year to Date		Change 2019 v 2018	
		07-Oct-19		2019	2018	Head	%
Steers	44.2%	16,621	16,908	472,678	522,264	-49,586	-9.5%
Cows	18.2%	6,827	8,684	270,355	308,903	-38,548	-12.5%
Heifers	29.6%	11,138	9,495	391,314	376,767	14,547	3.9%
Young Bulls	6.7%	2,520	2,188	169,811	159,561	10,250	6.4%
Mature Bulls	1.3%	480	534	28,949	25,775	3,174	12.3%
Total	100%	37,586	37,809	1,333,107	1,393,270	-60,163	-4.3%

821

Live Exports	W/C	Same week	W/C	Year to Date		Change 2019 v 2018	
	7-Oct-19	2018	30-Sep-19	2019	2018	Head	%
Northern Ireland	607	777	853	25,016	16,221	8,795	54%
EU Except NI	2,685	2,189	2,480	224,965	183,963	41,002	22%
Third Countries	0	30	0	13,424	18,021	-4,597	-
Total	3,292	2,996	3,333	263,405	218,205	45,200	21%
Calves YTD:	193,591			Adult YTD:Cattle		69,677	

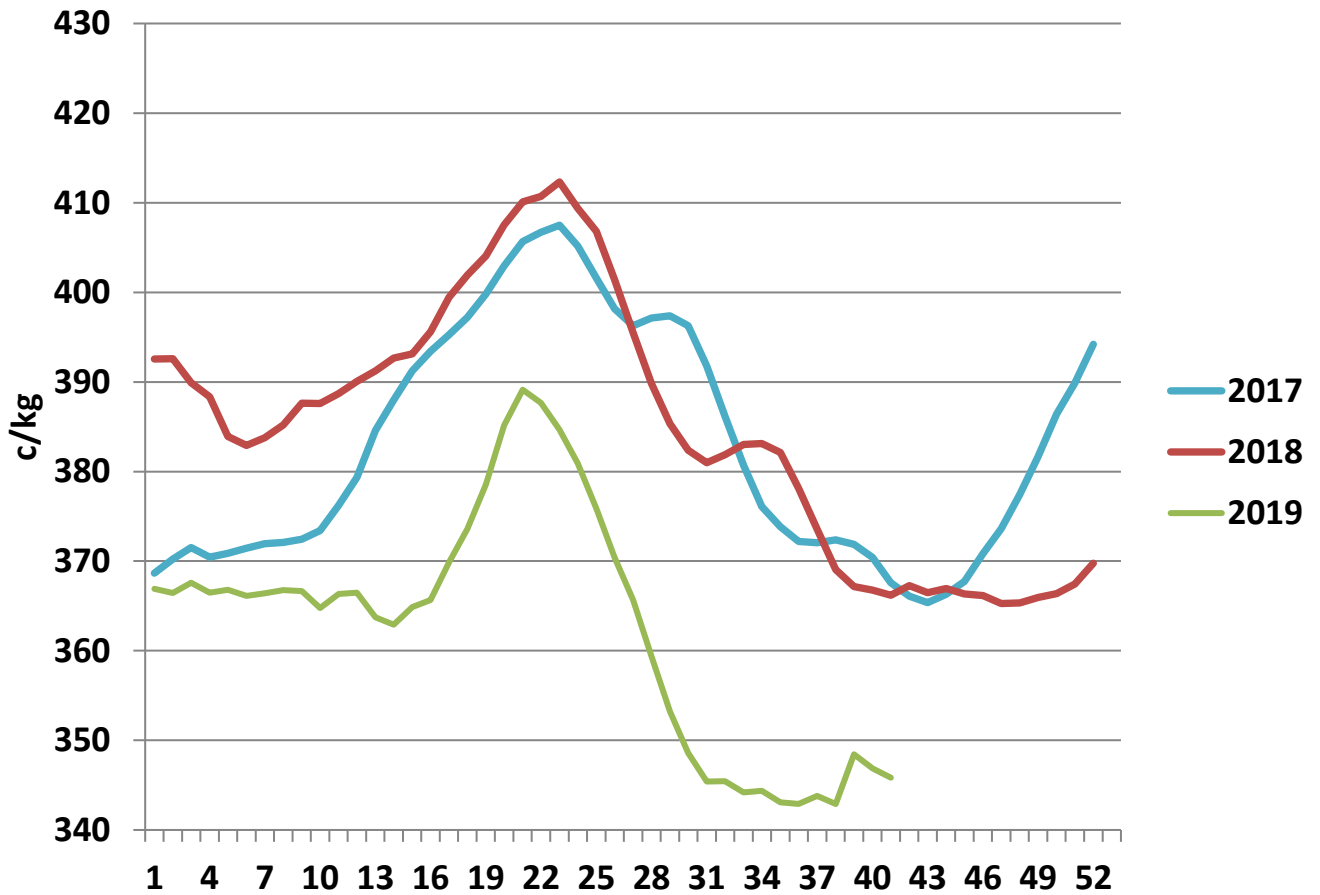
Irish Deadweight Cattle Prices vs Selected Other Markets, 2019



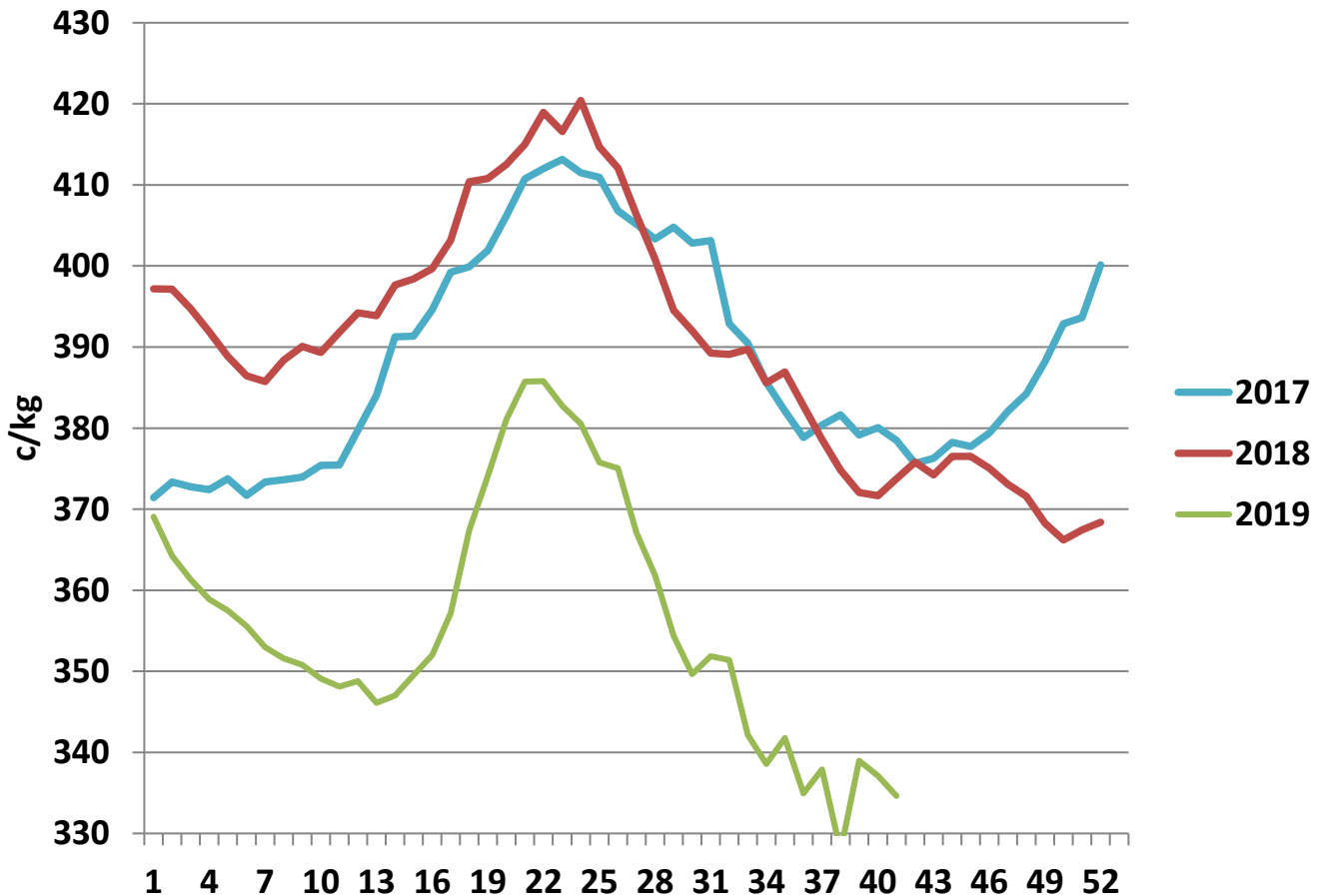
Livestock Pricing

	Ireland	NI	Britain	EU 14 Average	France	Germany
W/C 30/09/19	346.9	362.49	369.56	357.71	374	366.6

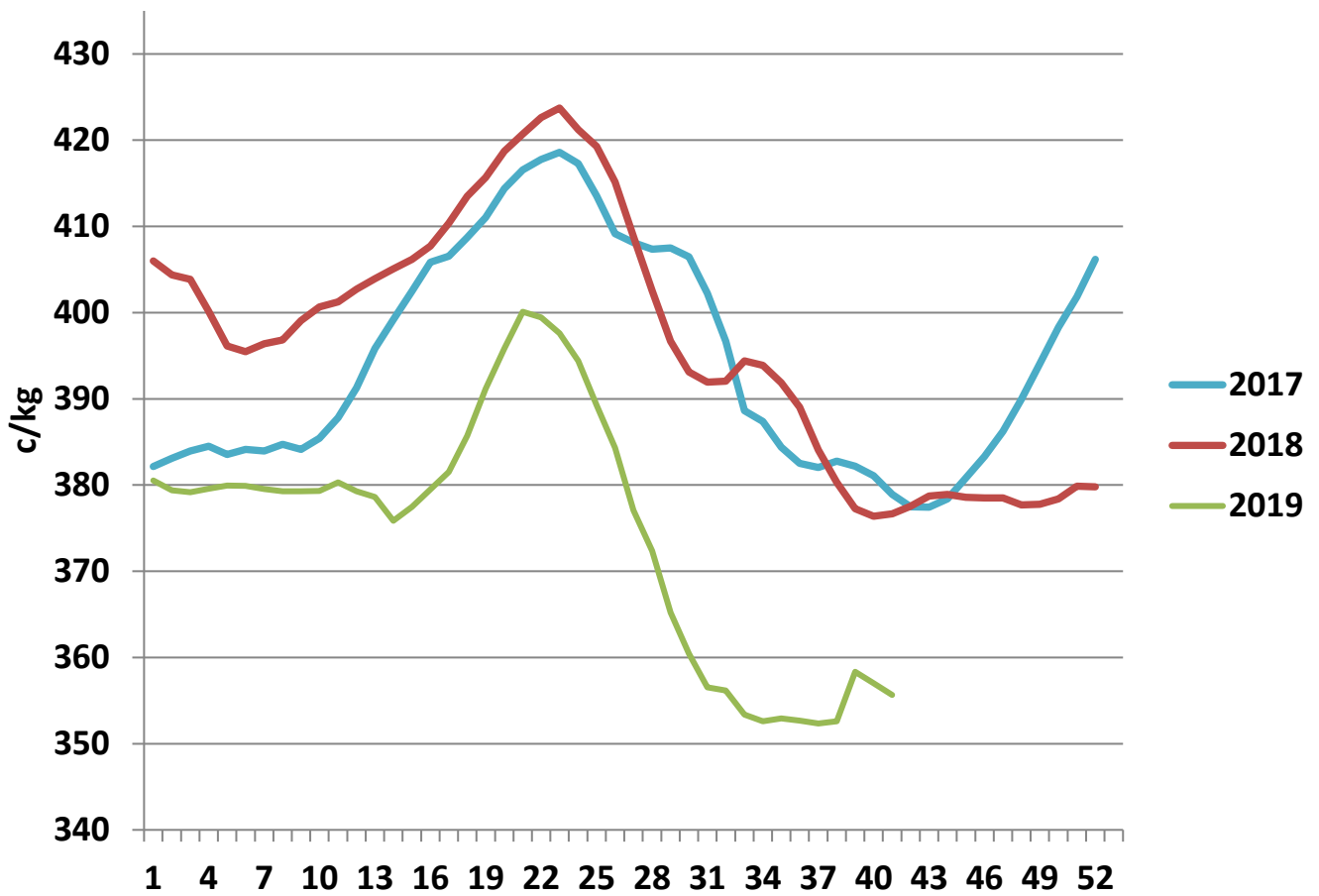
R3 Steer prices ex. VAT



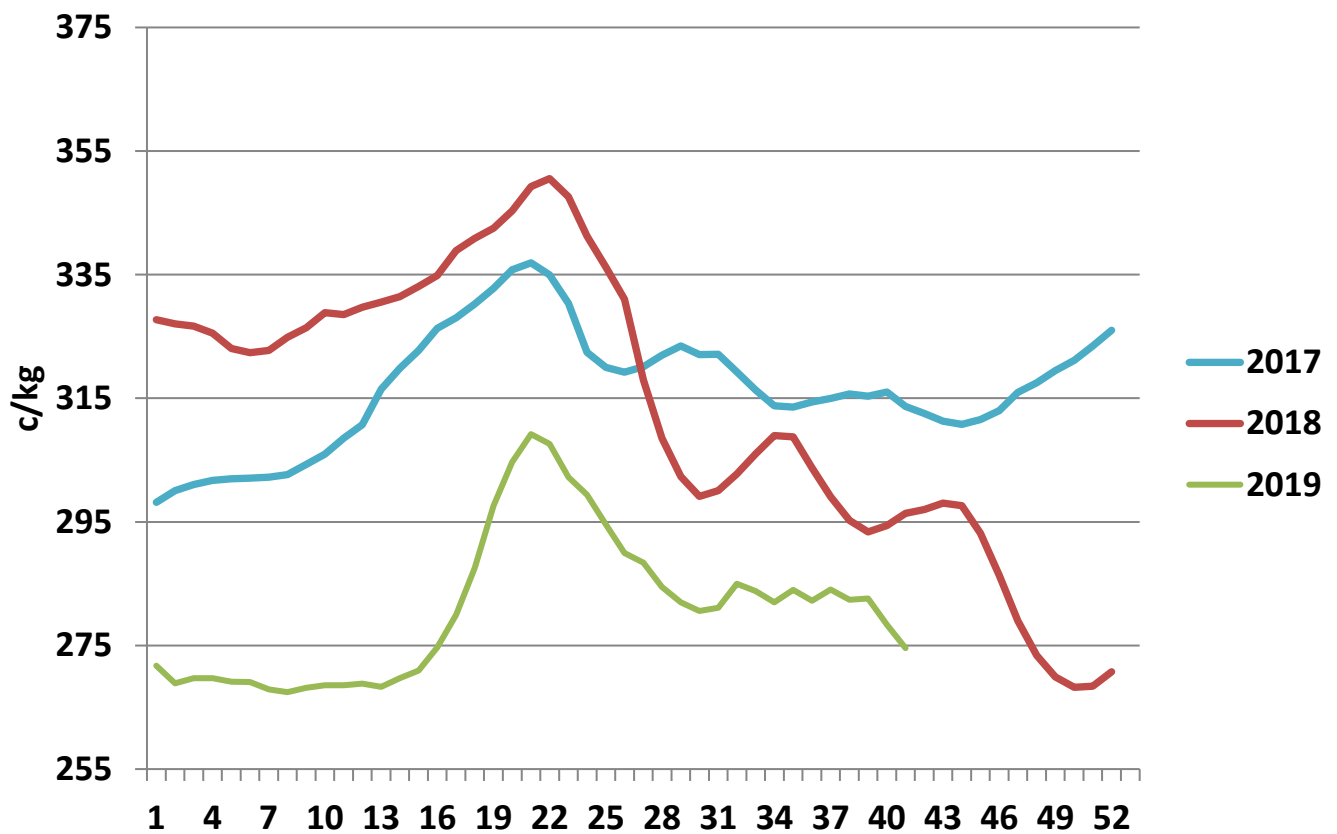
U3 Young Bull prices ex. VAT



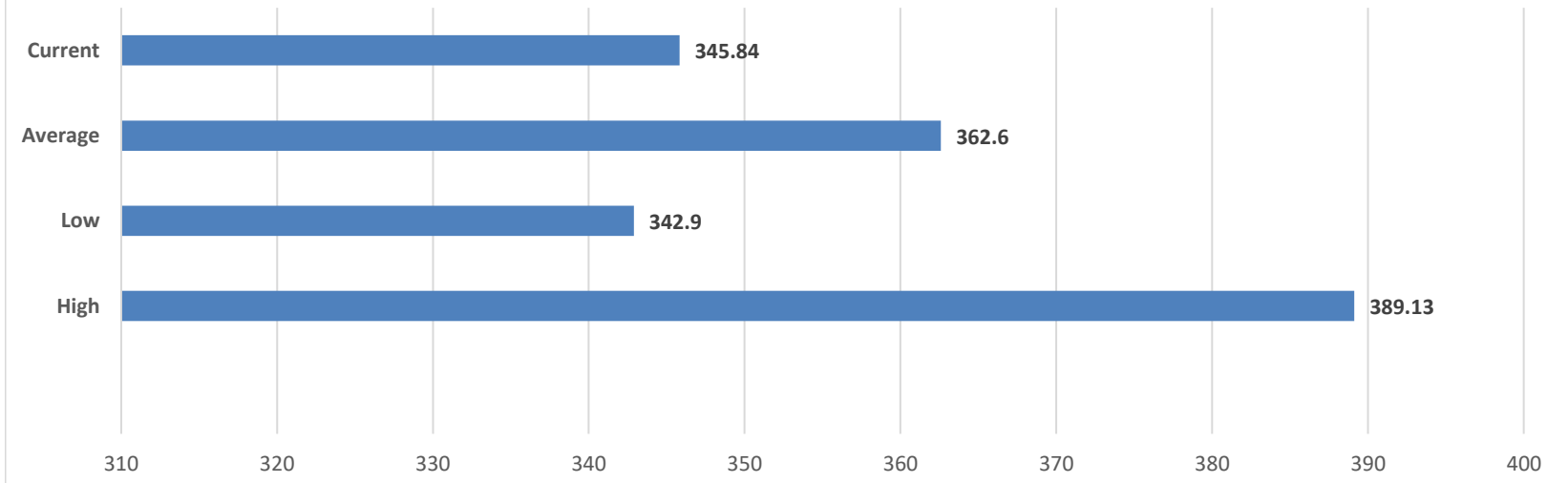
R3 Heifer prices ex. VAT



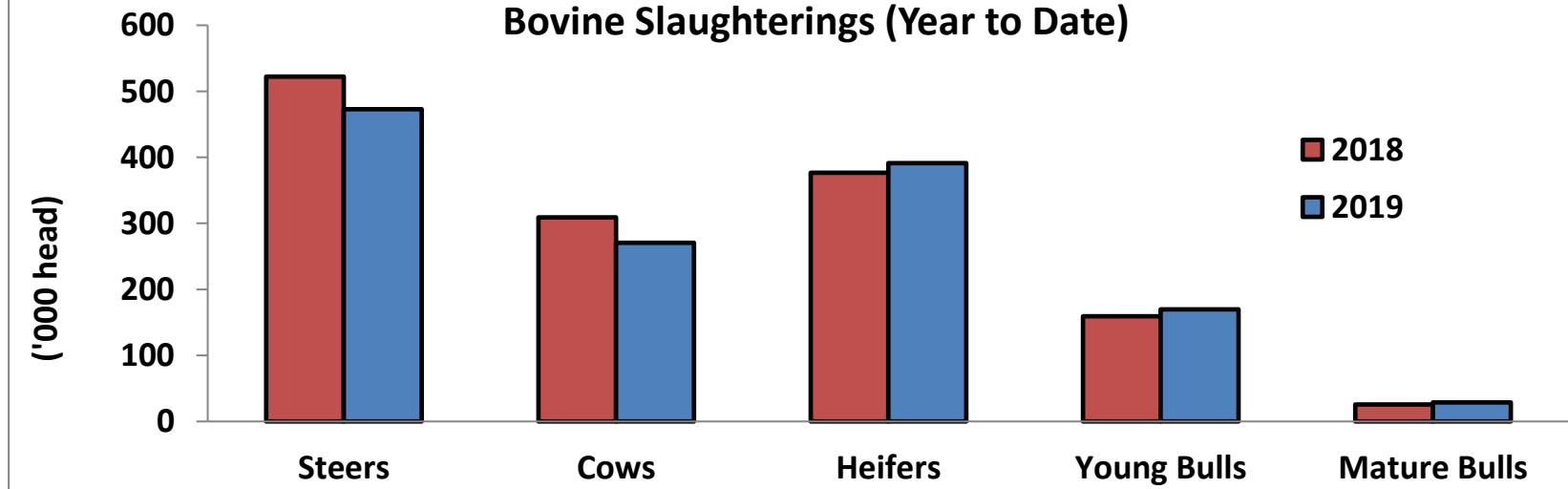
O4 Cow prices ex. VAT



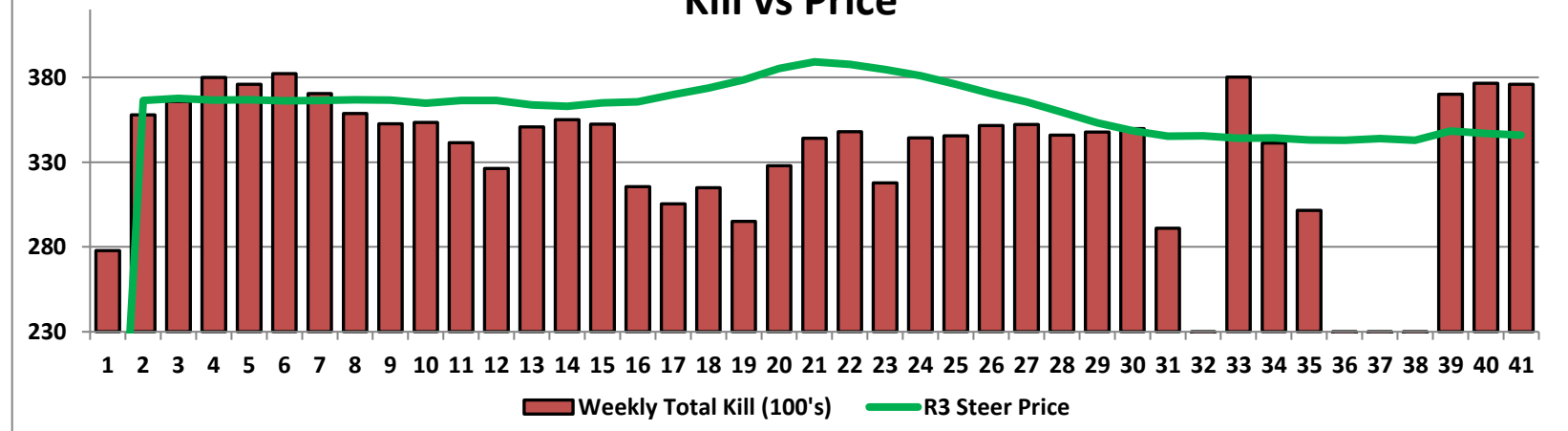
6 Month R3 Steer Statistics



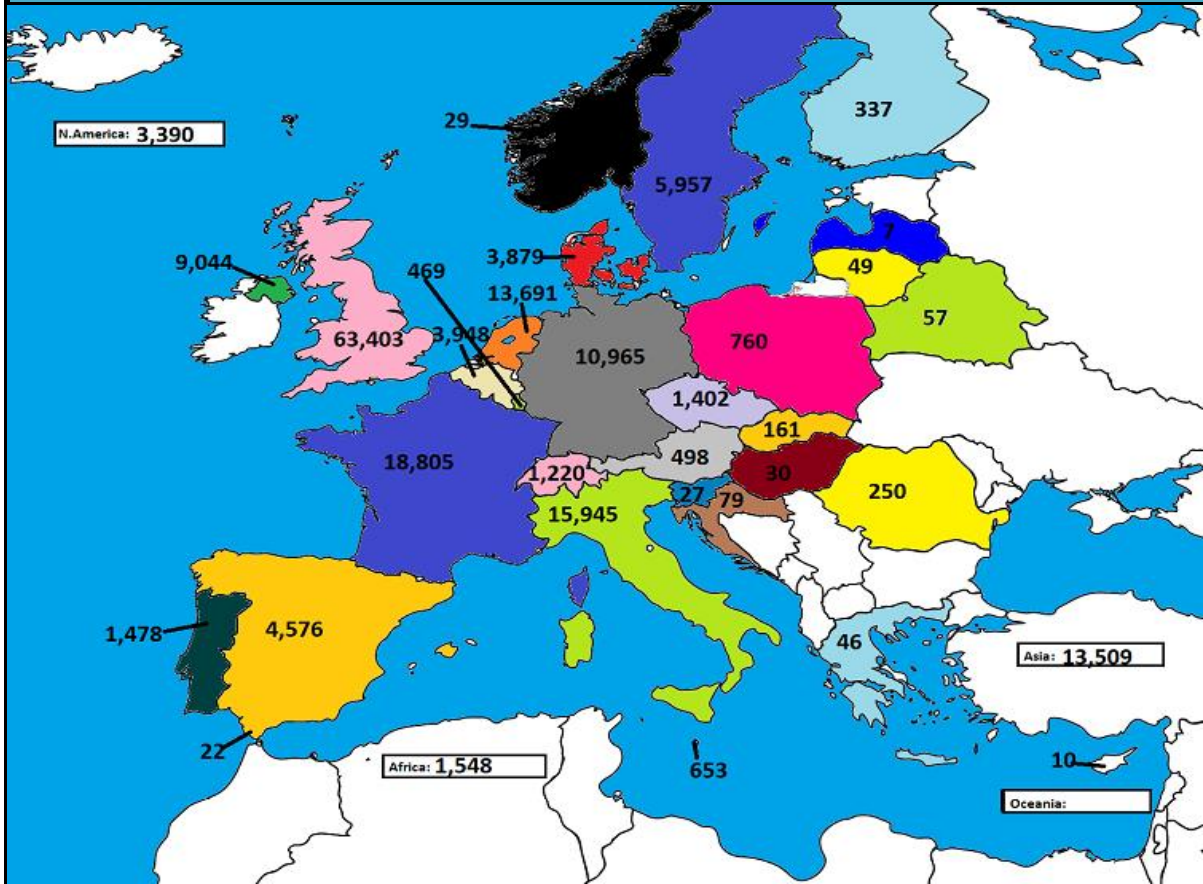
Bovine Slaughterings (Year to Date)



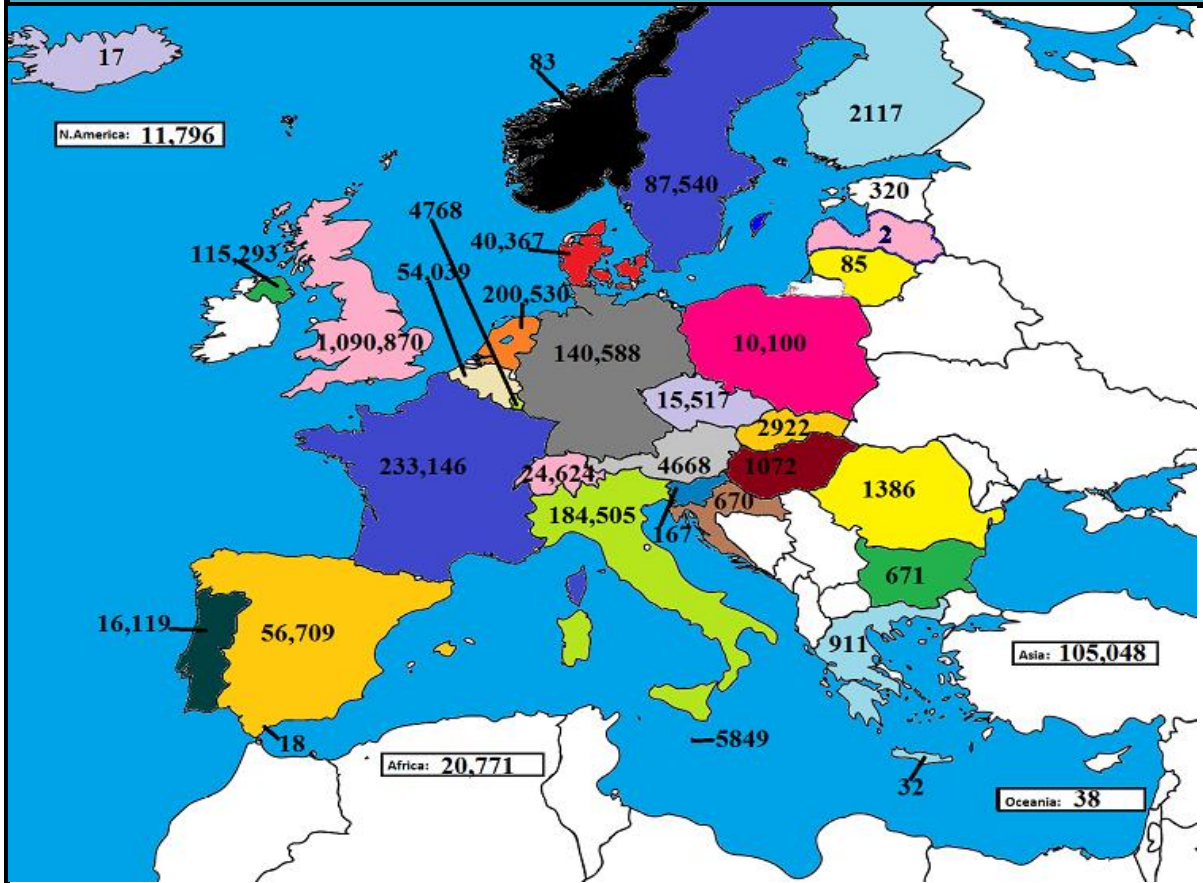
Kill vs Price



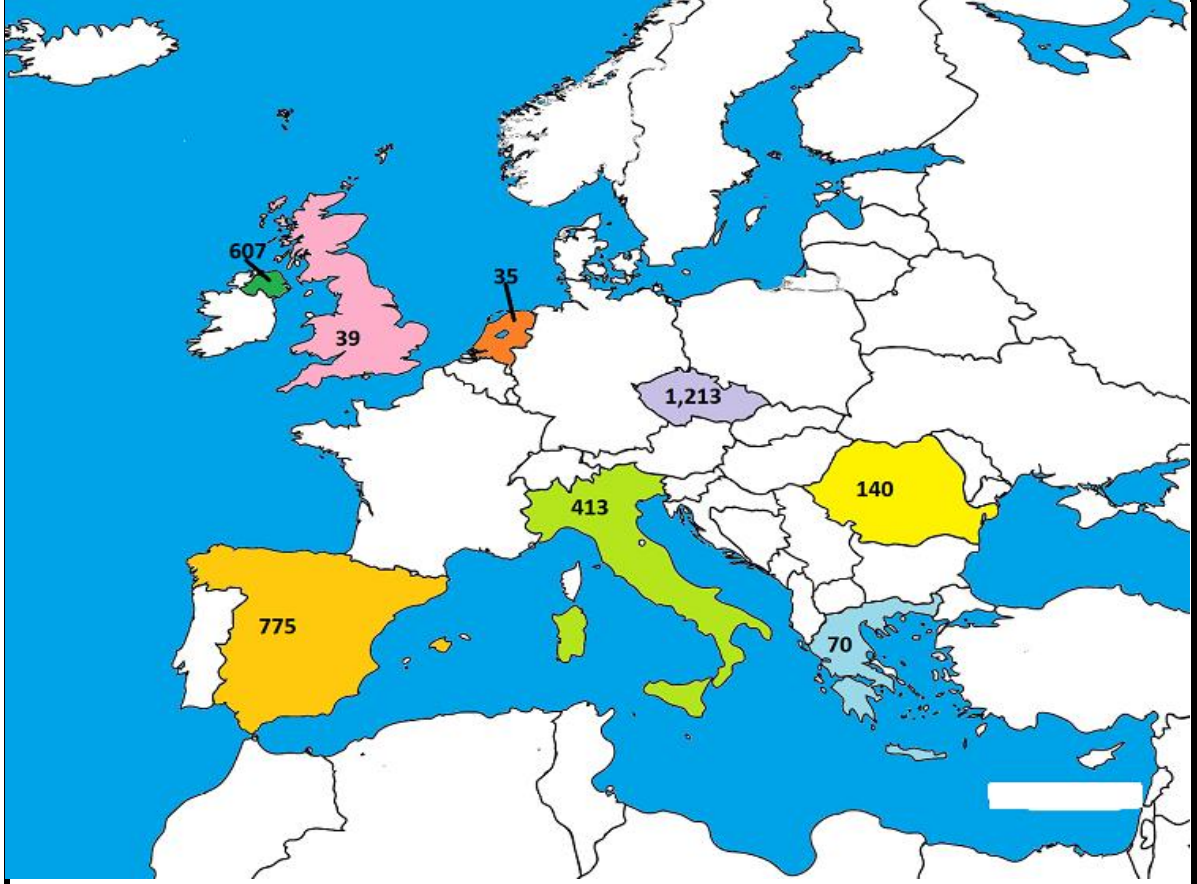
August 2019 Beef exports, €000 (CSO figures)



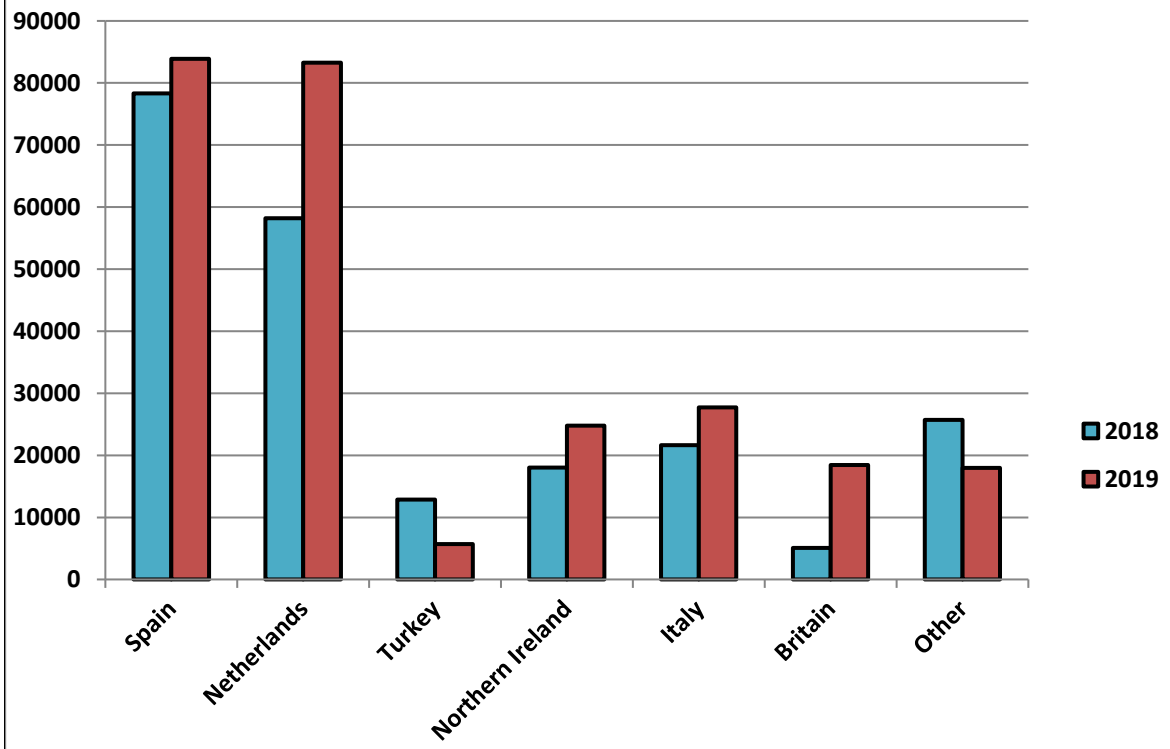
Cumulative beef exports to Dec 2018, €000 (CSO figures)



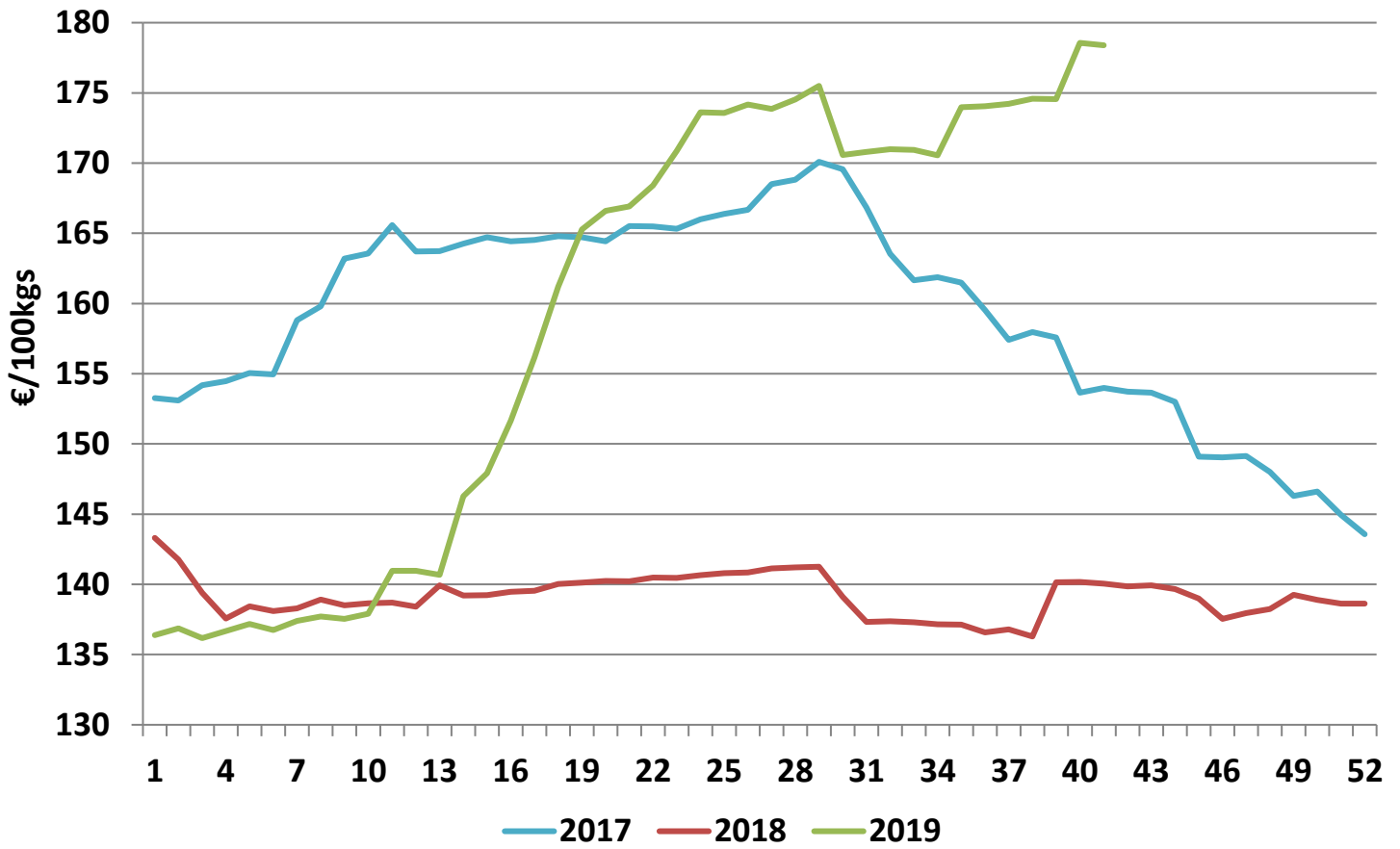
Cattle exported, w/c 07/10/19



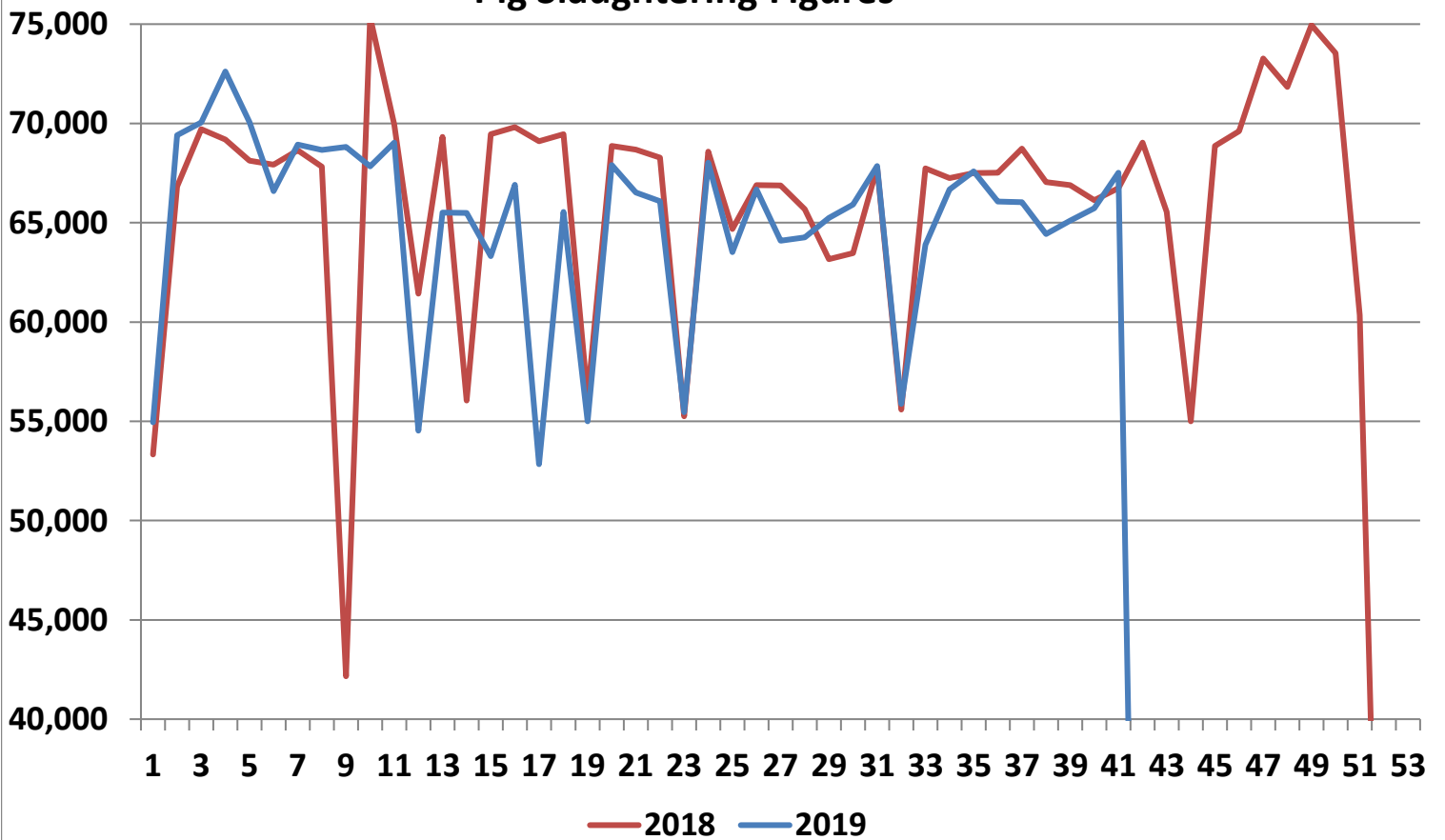
Cumulative cattle export figures, 2019



Average Grade E Pig Price



Pig Slaughtering Figures



Sheepmeat Information for Week 41

NOTE: EU PRICES
ARE PROVISIONAL AT
THE TIME OF
PUBLICATION AND
MAY NOT BE
REFLECTIVE OF THE
CURRENT PERIOD

Irish Prices €/100 kg	2019	2018	Change
Ave Factory Price	419.26	438.34	-4.4%
Ave Mart Price	374.22	383.03	-2.3%
National Ave Price	405.75	421.75	-3.8%
YTD Ave	460.63	494.05	-6.8%

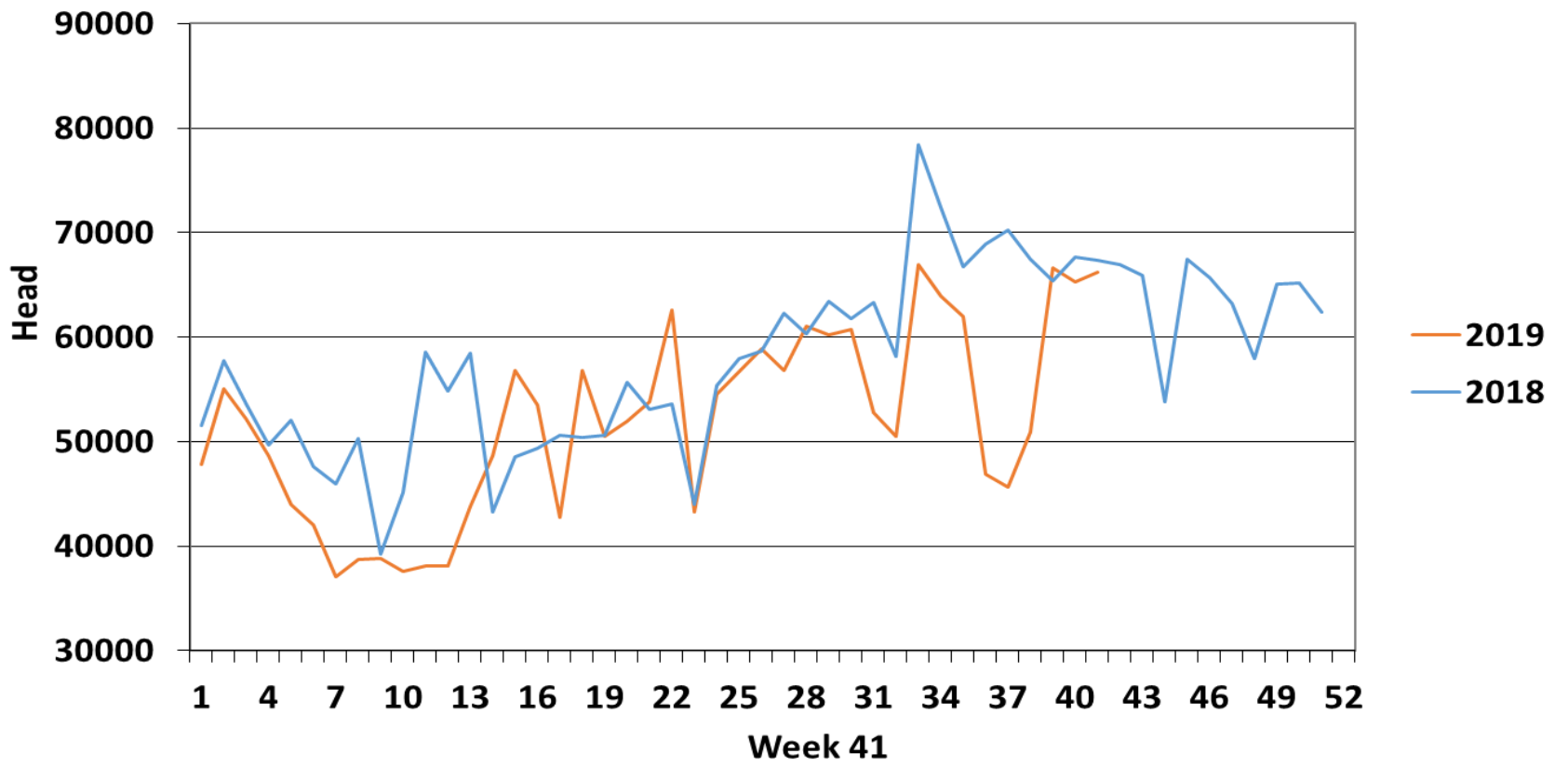
EU Market Rates Heavy Lambs	€/100kg	% of Commu Price
Belgium	469.6	102%
Denmark	512.7	112%
Germany	535.9	117%
Spain	536.3	117%
France	615.0	134%
Croatia	506.8	110%
Ireland	405.8	88%
Italy	586.0	127%
Cyprus	608.0	132%
Latvia	346.9	75%
Lithuania	361.7	79%
Netherlands	478.5	104%
Austria	562.0	122%
Poland	429.6	93%
Romania	178.3	39%
Finland	414.4	90%
Sweden	429.6	93%
Northern Ireland	365.2	79%
Great Britain	417.2	91%
United Kingdom	413.5	90%
Community	459.7	100%

Slaughterings	2019	2018	Change
Weekly	66,233	67,331	-2%
YTD	2,129,496	2,329,670	-9%

**REPORT ON SLAUGHTERING AT SHEEP EXPORT PREMISES
WEEK 41**

CATEGORY	2019		2018		DIFFERENCE	
	Weekly	Cumulative	Weekly	Cumulative	Weekly	Cumulative
Lambs/Hoggets	161	738,309	94	828,969	67	90,660
Spring Lambs	54,234	1,076,641	56,938	1,103,558	-2,704	26,917
Ewes and Rams	11,660	313,982	10,297	397,002	1,363	83,020
Light Lambs	178	564	2	141	176	423
TOTAL	66,233	2,129,496	67,331	2,329,670	-1,098	-200,174

Weekly Sheep Slaughtering



Ave. Price €/100 kg for Sheepmeat

