

Meat Market Report

28/10/19 - 03/11/19

Week

44



**An Roinn Talmhaíochta,
Bia agus Mara**

Department of Agriculture,
Food and the Marine

MARKET SUMMARY

Beef

Deadweight Prices c/100Kg (Including VAT)

	U3	U4	R3	R4	O3	O4	P+3
Steers	372.0	366.0	363.0	360.0	340.0	341.0	314.0
Heifers	385.0	381.0	373.0	369.0	355.0	353.0	313.0
Young Bulls	348.0	347.0	338.0	336.0	320.0	319.0	301.0
Cows			295.0	294.0	273.0	274.0	261.0

Liveweight Prices

*Bull Calf Average Price	€132.0 per head (Excluding VAT)
**Young Store Average Price	€201.0 per 100kg (Excluding VAT)
***Yearling (male & female) Price	€170.5 per 100kg (Excluding VAT)

* Aged 8-28 days ** Aged 180-364 days, Male & Female ***age 365-730 days

Slaughterings

34,364 cattle slaughtered this week, of which steers were 14,780 (43%), heifers 10,042 (29%), young bulls 2,801 (8%) and cows 6,270 (18%). Total YTD slaughter is 1,443,423 compared to 1,504,526 in 2018, a 4% decrease.

Live Trade

2,666 cattle were exported in the week commencing 21/10/2019, 1,918 to EU (Except NI). Live exports for 2019 amount to 268,891 compared to 224,633 in 2018, up 20% on 2018 levels.

*This data is provisional and subject to revision.

The next meeting of the Management Committee for the Common Organisation of Agricultural Markets (Animal Products Sector) is 21st November 2019

CONTENTS:

Page 2: Market Summary Beef
 Page 3: Market Summary Other Meats
 Page 4: Beef Price and Slaughter Summary
 Page 5: Comparative Beef Prices
 Page 6: Steer and Young Bull Price
 Page 7: Heifer and Cow Graphs
 Page 8: Price and Slaughter Graphs
 Page 9: Liveweight Beef Graphs

Page 10: Beef Export Maps
 Page 11: Beef Export Info
 Page 12: Pig price and slaughter graphs
 Page 13: Sheep prices and slaughter
 Page 15: Sheep price and slaughter graphs

MARKET SUMMARY

Pigmeat

Grade E Pig
Prices (Ex.
VAT)

The Grade E Pig price for week commencing 28/10/2019 was €178.76 per 100Kg compared to €139.67 in the same week last year, which represents a 28% increase.

Slaughtering

56,042 pigs were slaughtered in week 44 of which 1,185 were sows. The cumulative figure for pig slaughterings in 2019 is 2,854,721 which is a 1% decrease with the same point last year.

Sheepmeat

Sheepmeat
Prices (Ex.
VAT)

The national average price for the week commencing 28/10/2019 was €408.96 per 100Kg, a decrease of 4% over the same week last year.

Slaughtering

53,614 sheep were slaughtered at sheep export premises the week commencing 28/10/2019, compared to 53,837 in the same week of 2018. Sheep slaughterings for 2019 are 8% down on 2018 at 2,311,050 head.

Live Trade

Total live exports to European Countries stood at 6,227 head to the end of August 2019.

Poultry

Slaughtering

Cumulative poultry slaughterings for 2019* stand at 89,829,266 birds at the end of week 44, up 8% compared to the same period last year.

*Latest Figures are provisional and subject to change

Dead Weight Prices	W/C	W/C	Same week 2018	% change prev week	% change 2018
	28/10/19	21/10/19	29/10/18		
Steers (R3) (c/kg)	344.2	344.1	366.9	0.0%	-6.2%
Heifers (R3) (c/kg)	353.6	354.3	378.9	-0.2%	-6.7%
Young Bulls (U3) (c/kg)	329.8	330.3	376.5	-0.2%	-12.4%
Cows (04) (c/kg)	259.7	264.2	297.6	-1.7%	-12.7%

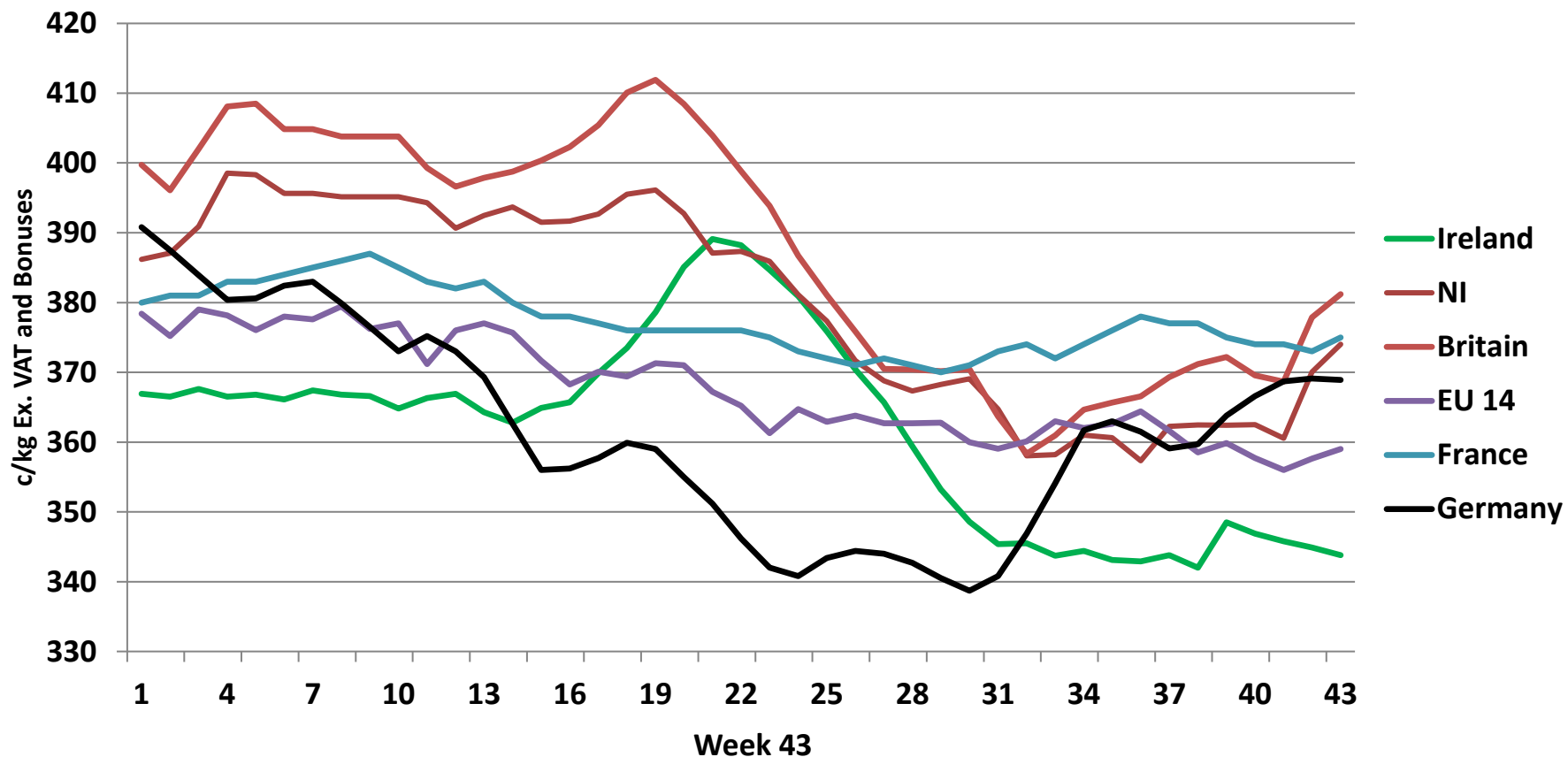
Live Weight Prices	W/C	W/C	Same week 2018	% change previous week	% change 2018
	28/10/19	21/10/19	29/10/18		
Yearlings (Male) (Aged 365 - 730 days) - (€/100Kg)	165	161	179	2.5%	-7.8%
Yearlings (Female) (Aged 365 - 730 days) - (€/100Kg)	176	171	183	2.9%	-3.8%
Young Stores (Male & Female) (Aged 180 - 364 days) - (€/100Kg)	201	204	216	-1.5%	-6.9%
Bull Calf (€/head) Dairy	73.6	77.9	115.7	-5.5%	-36.4%
Bull Calf (€/head) Beef	190.5	202.1	213.3	-5.7%	-10.7%
Bull Calf (€/head) Average	132.0	140.0	164.5	-5.7%	-19.7%

Slaughter Figures	% of weekly figures	W/C	Same week 2018	Year to Date		Change 2019 v 2018	
		28-Oct-19		2019	2018	Head	%
Steers	43.0%	14,780	13,526	521,281	568,926	-47,645	-8.4%
Cows	18.2%	6,270	7,933	290,980	334,677	-43,697	-13.1%
Heifers	29.2%	10,042	8,842	422,642	405,084	17,558	4.3%
Young Bulls	8.2%	2,801	2,532	178,074	168,667	9,407	5.6%
Mature Bulls	1.4%	471	414	30,446	27,172	3,274	12.0%
Total	100%	34,364	33,247	1,443,423	1,504,526	-61,103	-4.1%

821

Live Exports	W/C	Same week	W/C	Year to Date		Change 2019 v 2018	
	21-Oct-19	2018	14-Oct-19	2019	2018	Head	%
Northern Ireland	748	863	785	26,549	18,257	8,292	45%
EU Except NI	1,918	2,082	1,843	228,726	188,174	40,552	22%
Third Countries	0	181	192	13,616	18,202	-4,586	-
Total	2,666	3,126	2,820	268,891	224,633	44,258	20%
Calves YTD:	194,908			Adult YTD:Cattle		73,846	

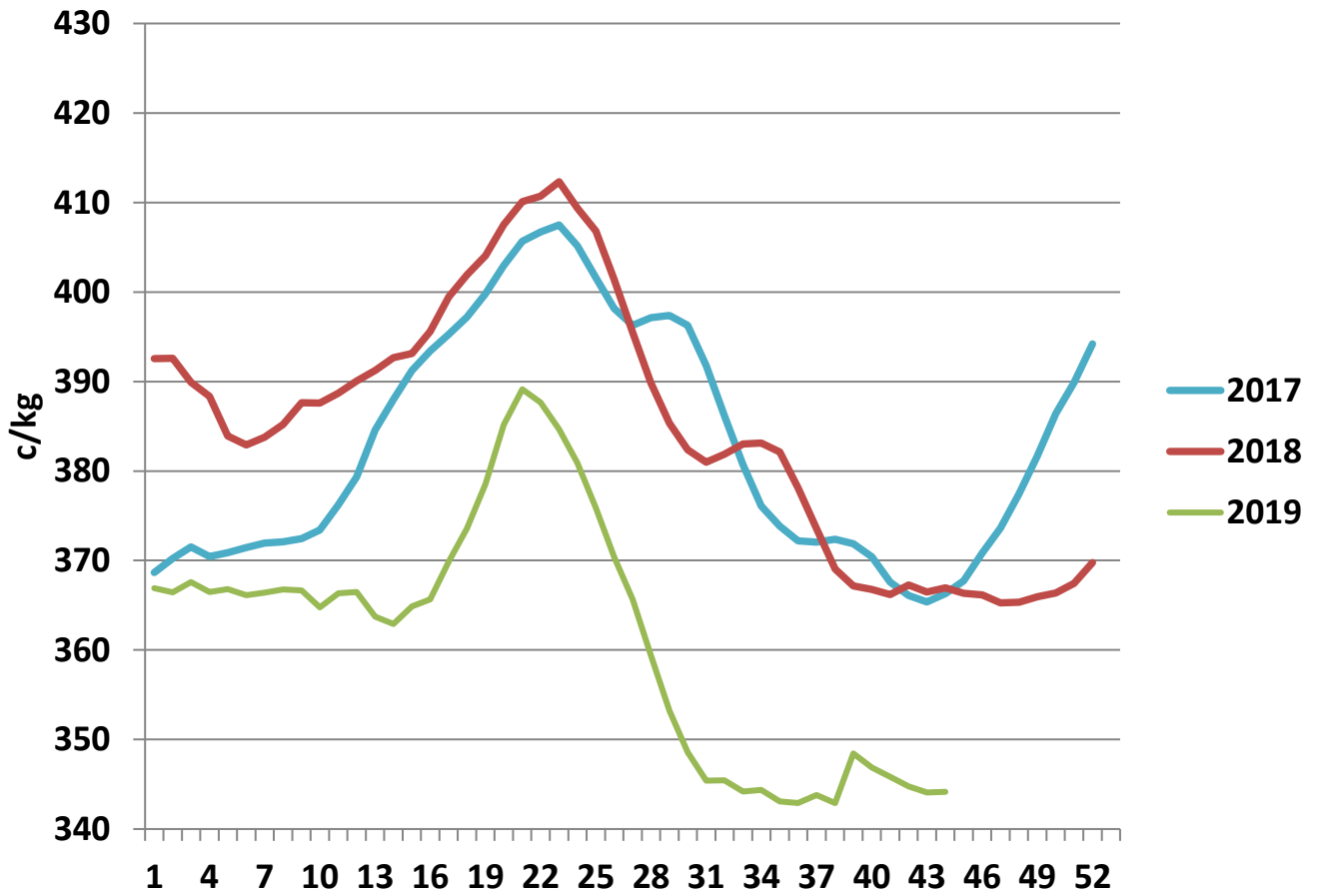
Irish Deadweight Cattle Prices vs Selected Other Markets, 2019



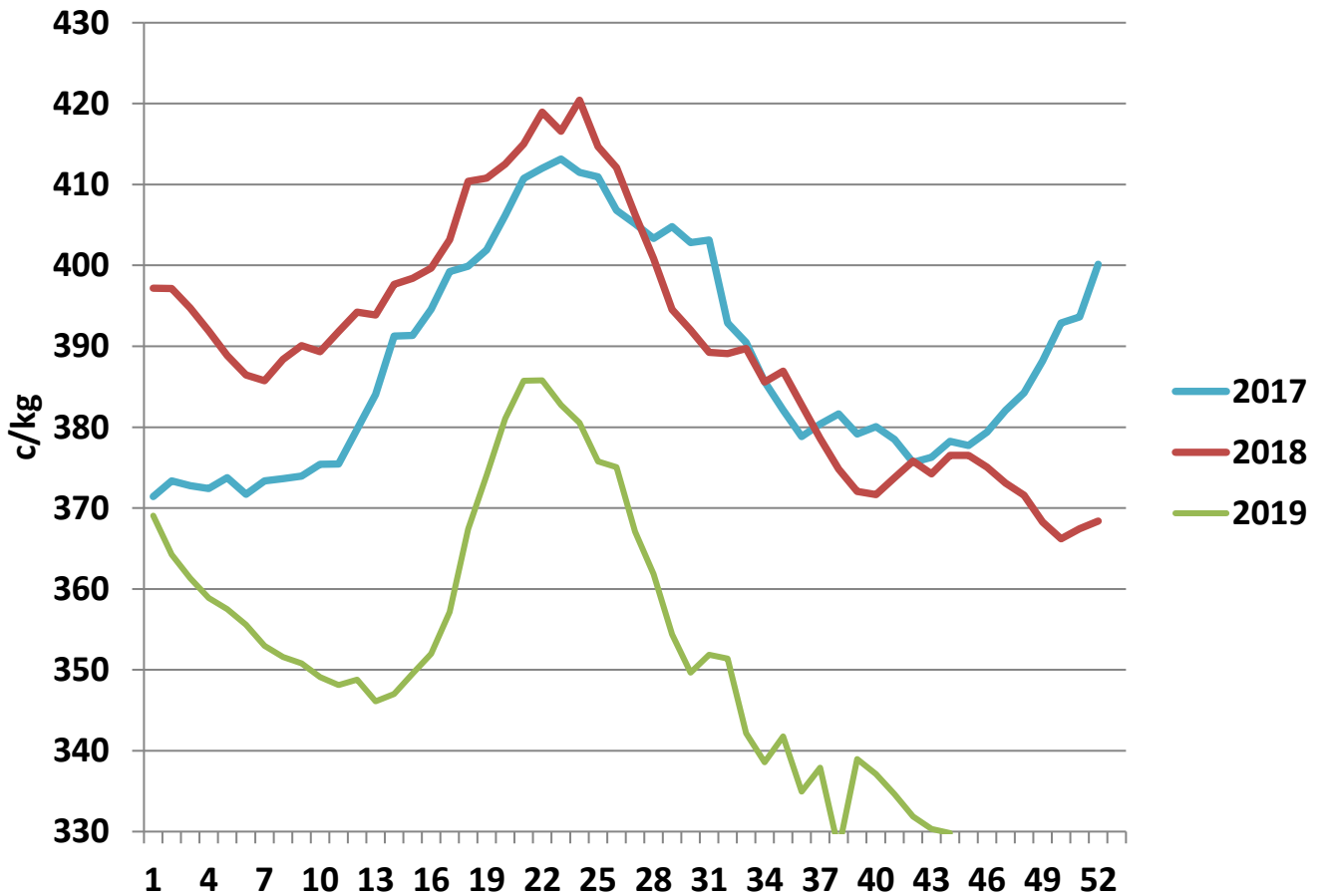
Livestock Pricing

	Ireland	NI	Britain	EU 14 Average	France	Germany
W/C 21/10/19	344	374	381	359	375	369

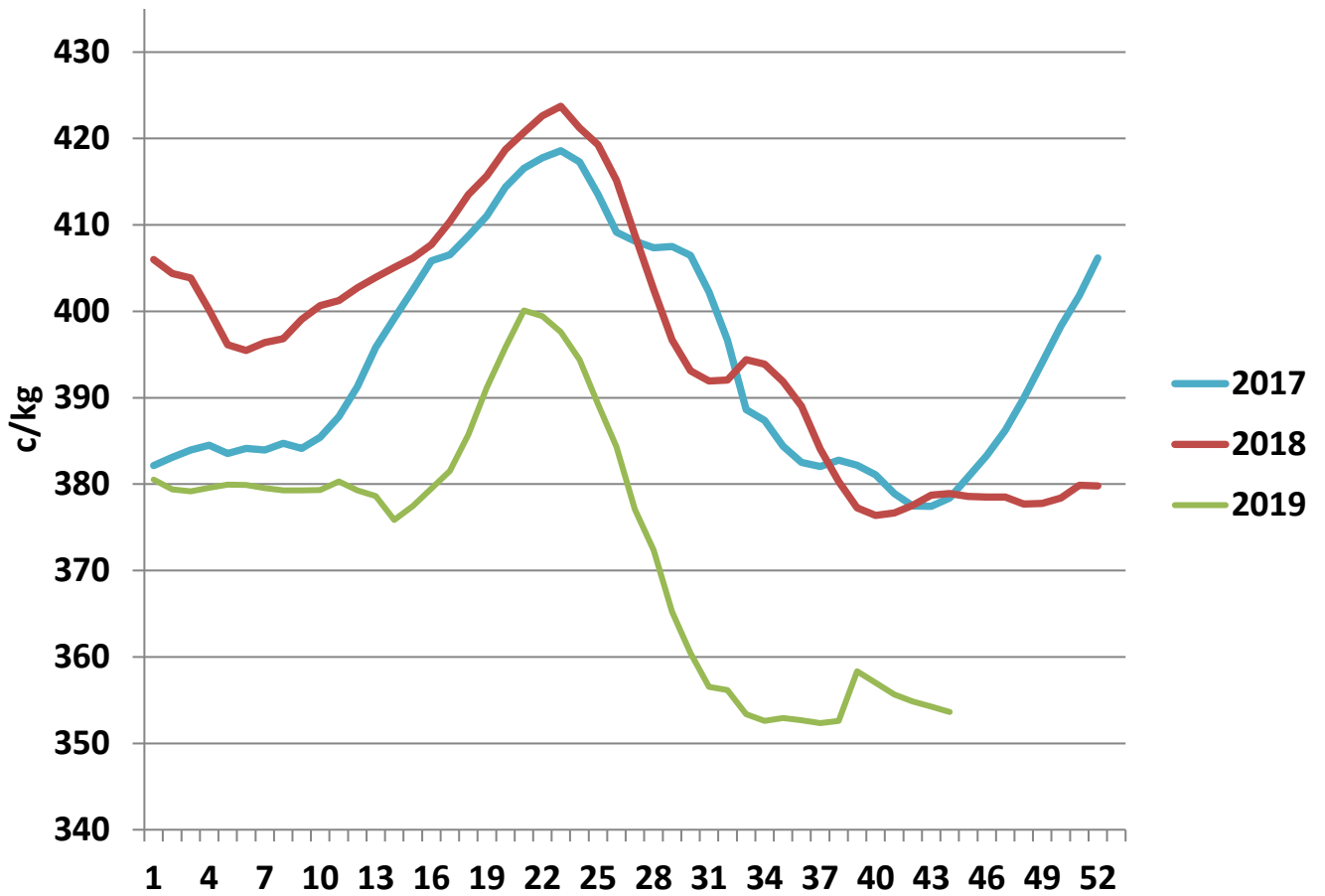
R3 Steer prices ex. VAT



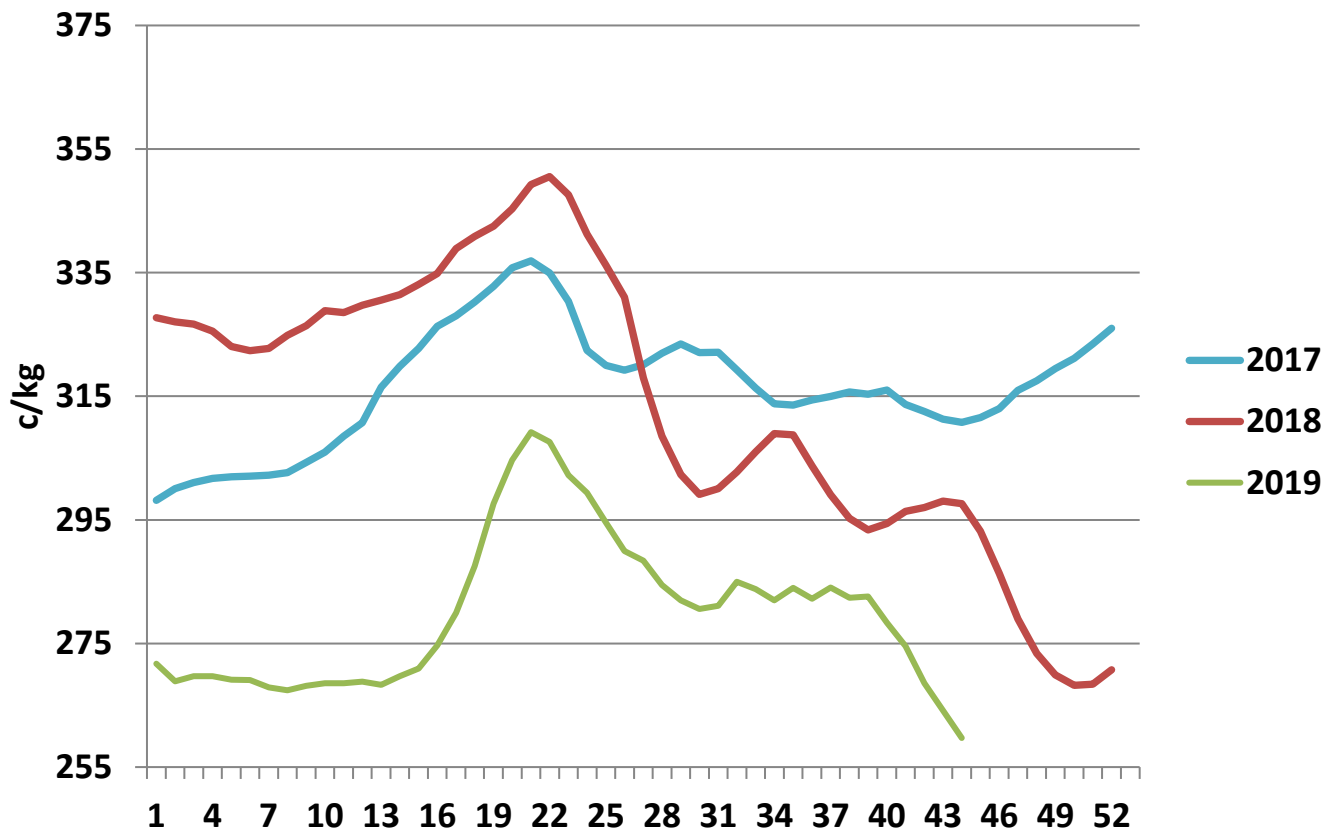
U3 Young Bull prices ex. VAT



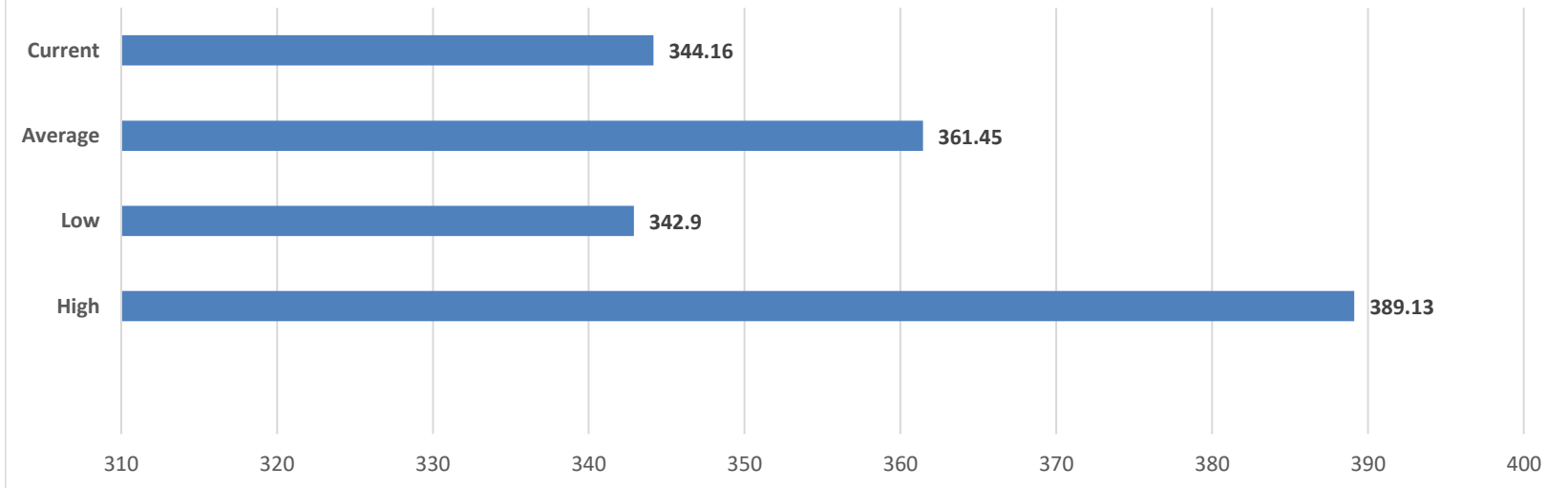
R3 Heifer prices ex. VAT



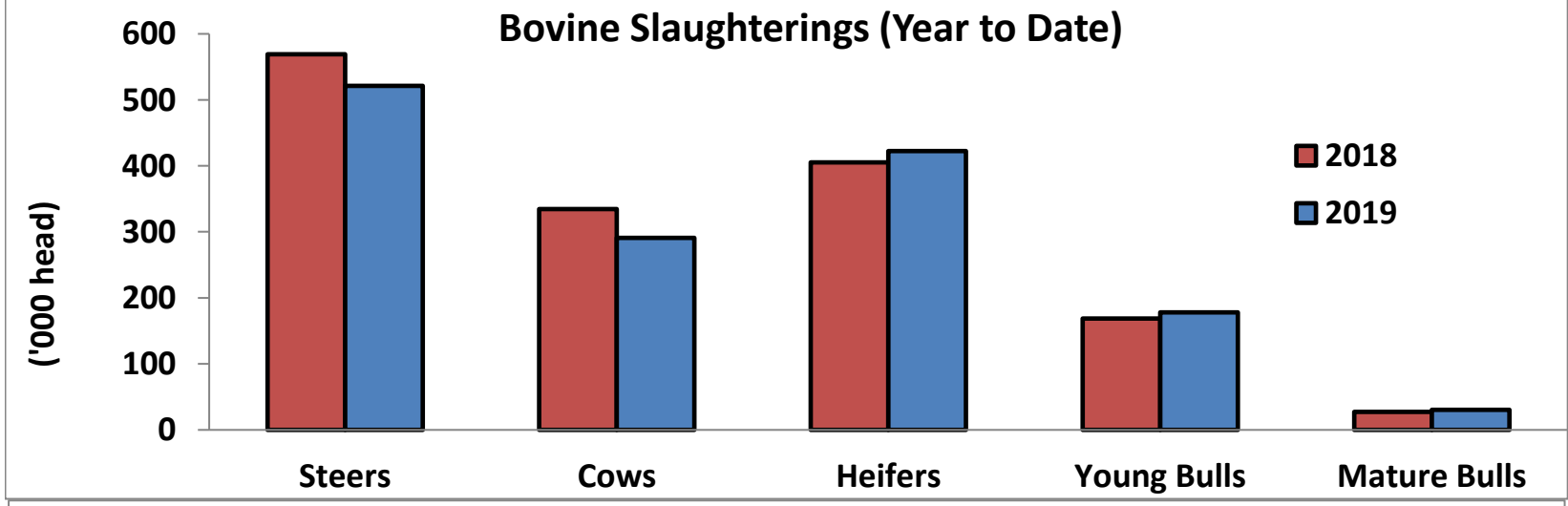
O4 Cow prices ex. VAT



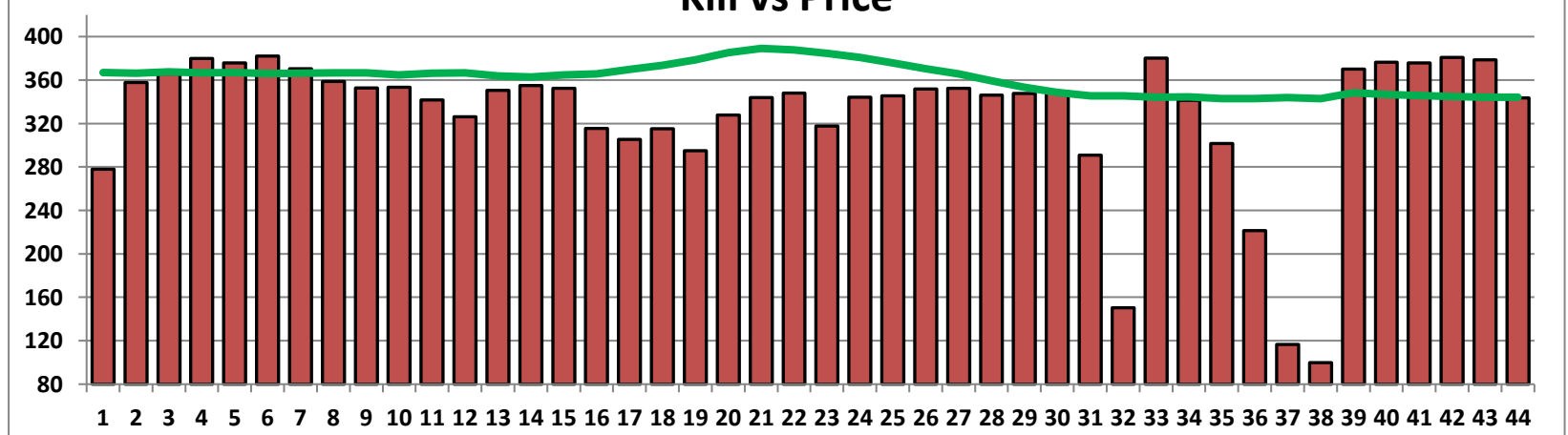
6 Month R3 Steer Statistics



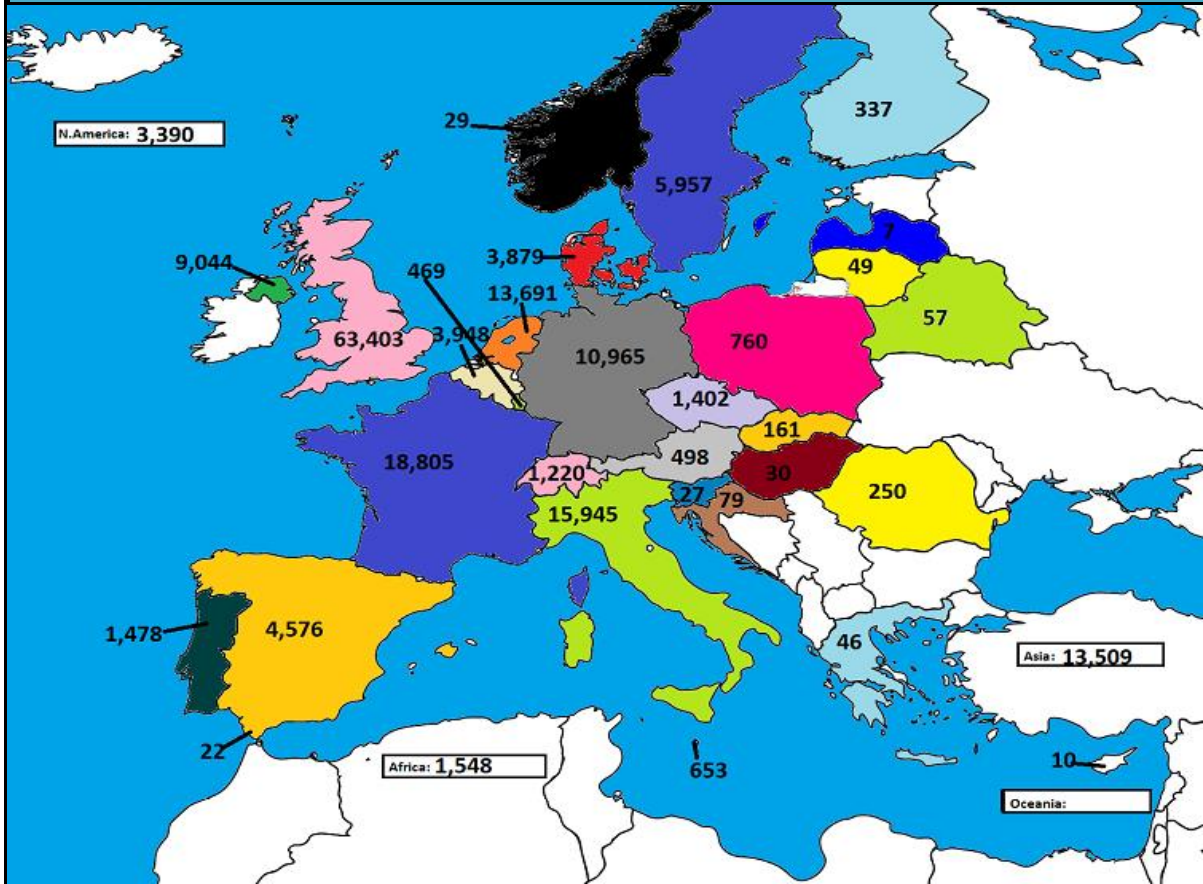
Bovine Slaughtering (Year to Date)



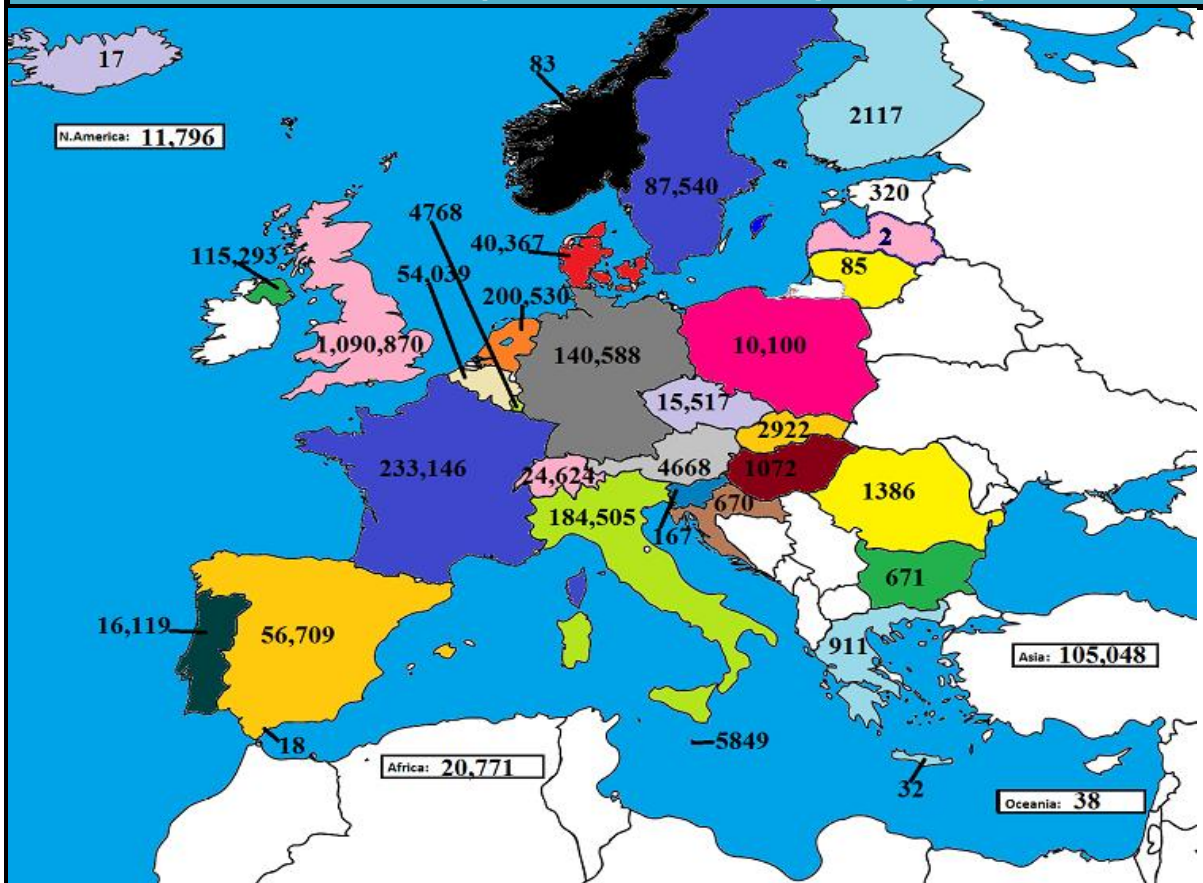
Kill vs Price



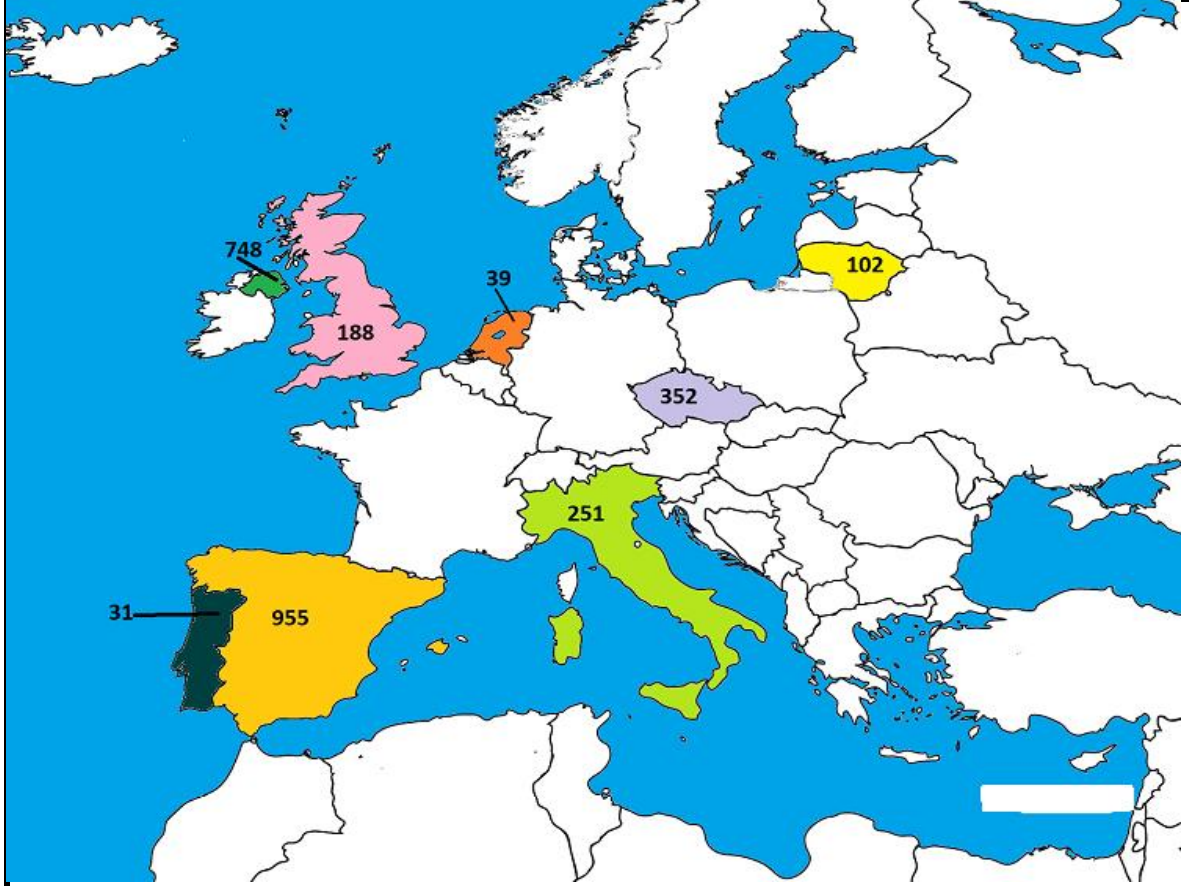
August 2019 Beef exports, €000 (CSO figures)



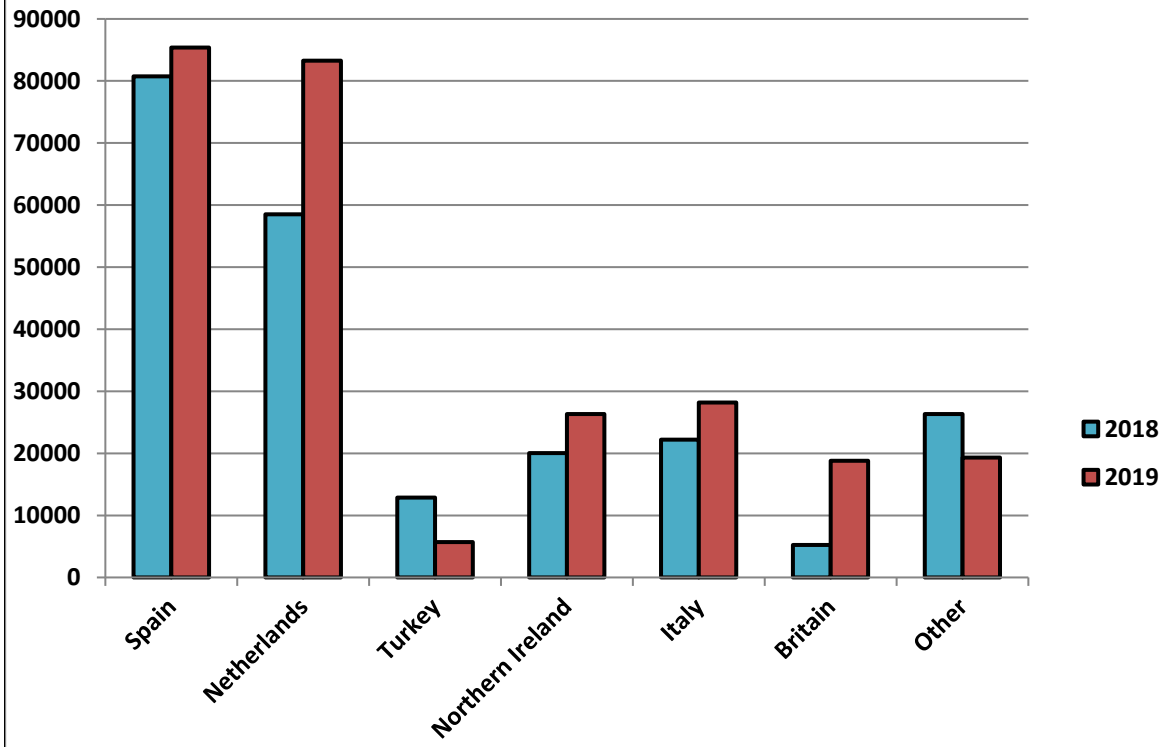
Cumulative beef exports to Dec 2018, €000 (CSO figures)



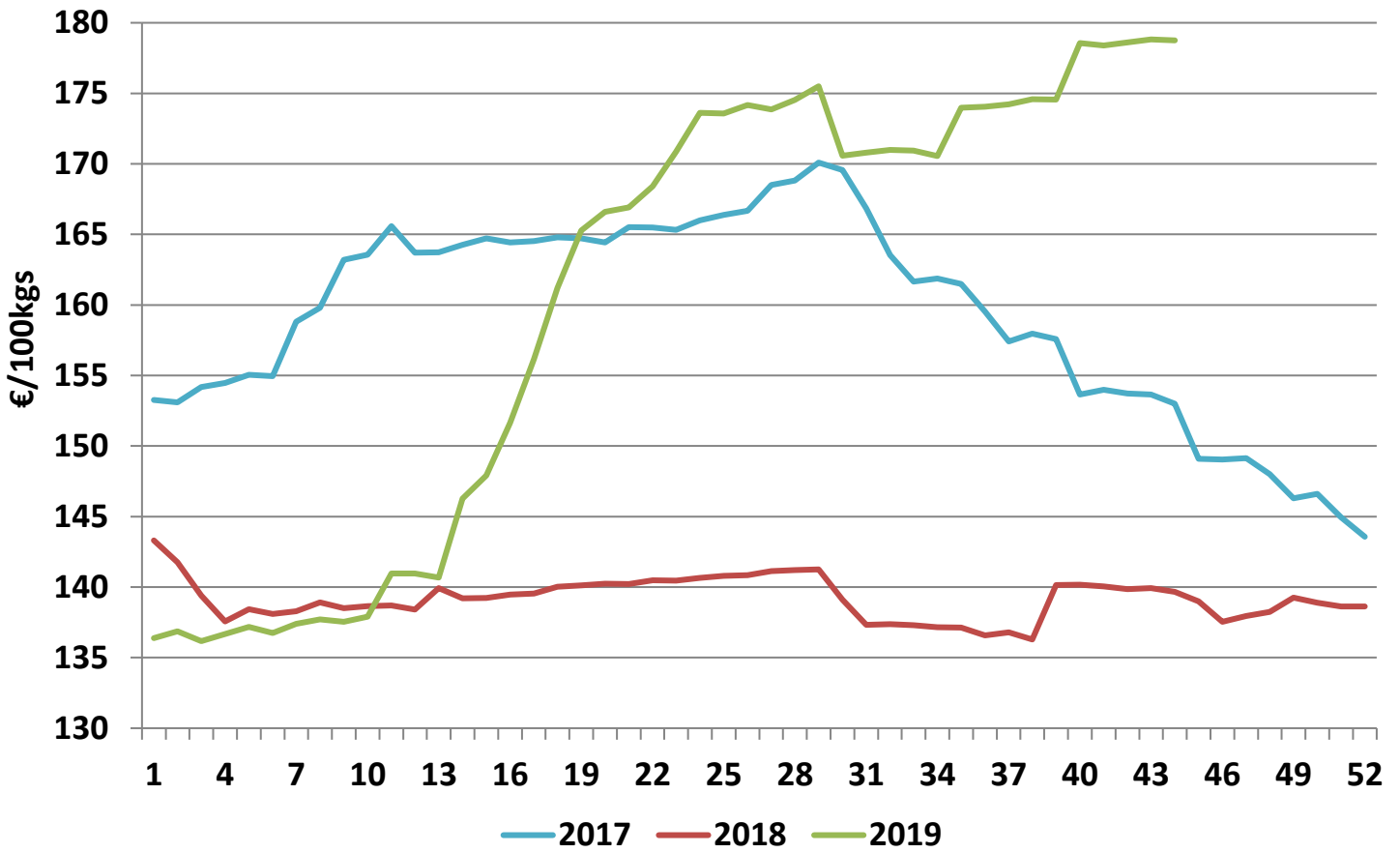
Cattle exported, w/c 21/10/19



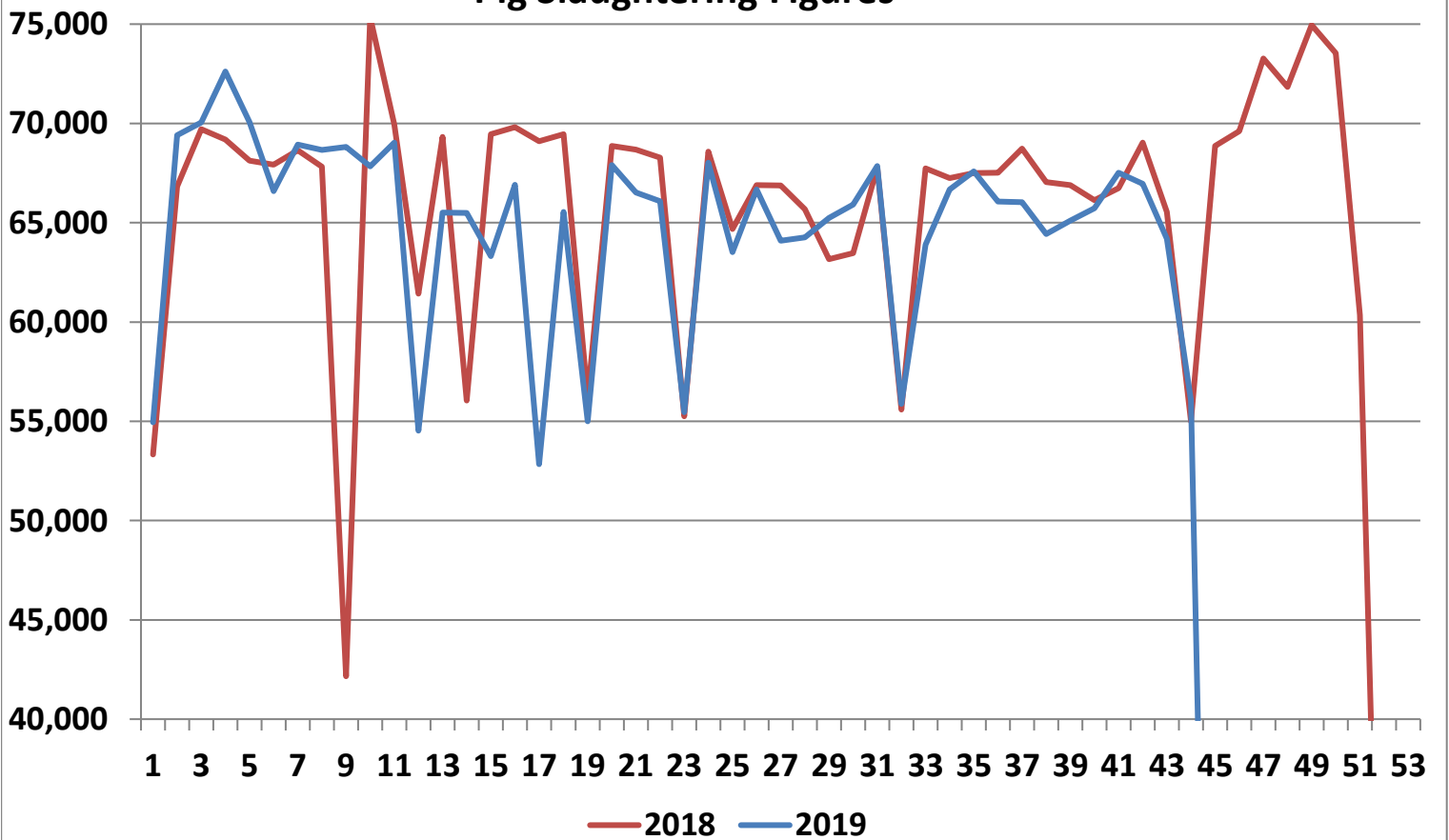
Cumulative cattle export figures, 2019



Average Grade E Pig Price



Pig Slaughtering Figures



Sheepmeat Information for Week 44

NOTE: EU PRICES
ARE PROVISIONAL AT
THE TIME OF
PUBLICATION AND
MAY NOT BE
REFLECTIVE OF THE
CURRENT PERIOD

Irish Prices €/100 kg	2019	2018	Change
Ave Factory Price	424.07	442.67	-4.2%
Ave Mart Price	373.72	382.58	-2.3%
National Ave Price	408.96	424.64	-3.7%
YTD Ave	462.97	489.37	-5.4%

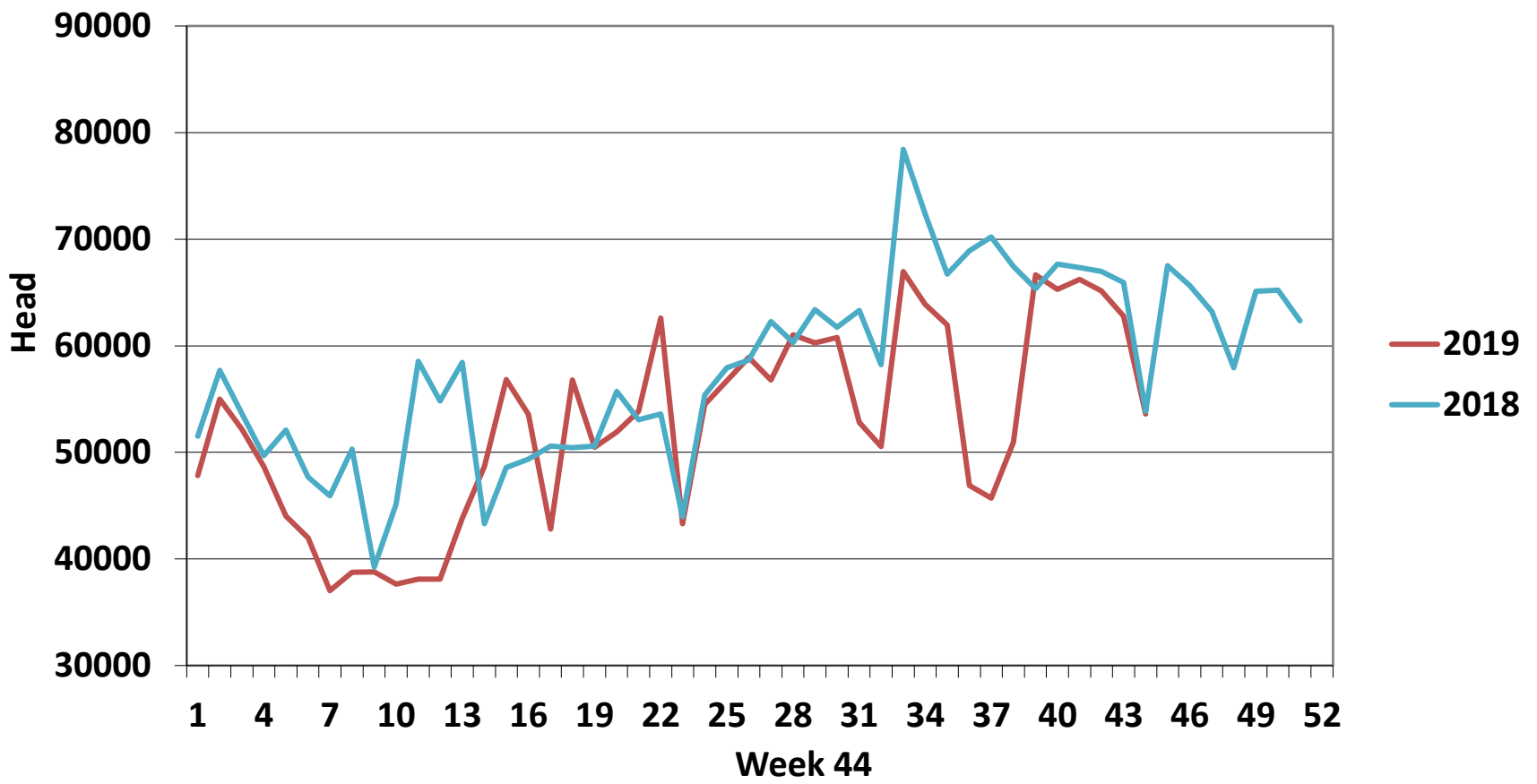
EU Market Rates Heavy Lambs	€/100kg
Belgium	461.8
Denmark	512.7
Germany	524.1
Spain	539.1
France	619.0
Croatia	547.7
Ireland	409.0
Italy	582.0
Cyprus	601.0
Latvia	356.9
Lithuania	444.6
Netherlands	479.1
Austria	566.0
Poland	429.6
Romania	187.7
Finland	401.0
Sweden	415.2
Northern Ireland	377.4
Great Britain	432.6
United Kingdom	428.7
Community	467.9

Slaughterings	2019	2018	Change
Weekly	53,614	53,837	0%
YTD	2,311,050	2,516,409	-8%

**REPORT ON SLAUGHTERING AT SHEEP EXPORT PREMISES
WEEK 44**

CATEGORY	2019		2018		DIFFERENCE	
	Weekly	Cumulative	Weekly	Cumulative	Weekly	Cumulative
Lambs/Hoggets	59	738,566	106	829,309	-47	90,473
Spring Lambs	45,262	1,229,219	45,163	1,259,475	99	30,256
Ewes and Rams	8,293	342,694	8,564	427,480	-271	84,786
Light Lambs		571	4	145	-4	426
TOTAL	53,614	2,311,050	53,837	2,516,409	-223	-205,359

Weekly Sheep Slaughtering



Ave. Price €/100 kg for Sheepmeat

