

Meat Market Report

04/11/19 - 10/11/19

Week

45



**An Roinn Talmhaíochta,
Bia agus Mara**

Department of Agriculture,
Food and the Marine

MARKET SUMMARY

Beef

Deadweight Prices c/100Kg (Including VAT)

	U3	U4	R3	R4	O3	O4	P+3
Steers	371.0	366.0	362.0	358.0	341.0	338.0	313.0
Heifers	382.0	378.0	371.0	368.0	355.0	353.0	311.0
Young Bulls	346.0	349.0	339.0	339.0	321.0	324.0	304.0
Cows			294.0	293.0	272.0	273.0	258.0

Liveweight Prices

*Bull Calf Average Price	€119.2 per head (Excluding VAT)
**Young Store Average Price	€199.0 per 100kg (Excluding VAT)
***Yearling (male & female) Price	€169.0 per 100kg (Excluding VAT)

* Aged 8-28 days ** Aged 180-364 days, Male & Female ***age 365-730 days

Slaughterings

38,816 cattle slaughtered this week, of which steers were 16,238 (42%), heifers 10,733 (28%), young bulls 3,061 (8%) and cows 8,219 (21%). Total YTD slaughter is 1,482,239 compared to 1,544,543 in 2018, a 4% decrease.

Live Trade

4,483 cattle were exported in the week commencing 28/10/2019, 755 to EU (Except NI). Live exports for 2019 amount to 273,374 compared to 227,542 in 2018, up 20% on 2018 levels.

*This data is provisional and subject to revision.

The next meeting of the Management Committee for the Common Organisation of Agricultural Markets (Animal Products Sector) is 21st November 2019

CONTENTS:

Page 2: Market Summary Beef
 Page 3: Market Summary Other Meats
 Page 4: Beef Price and Slaughter Summary
 Page 5: Comparative Beef Prices
 Page 6: Steer and Young Bull Price
 Page 7: Heifer and Cow Graphs
 Page 8: Price and Slaughter Graphs
 Page 9: Liveweight Beef Graphs

Page 10: Beef Export Maps
 Page 11: Beef Export Info
 Page 12: Pig price and slaughter graphs
 Page 13: Sheep prices and slaughter
 Page 15: Sheep price and slaughter graphs

MARKET SUMMARY

Pigmeat

Grade E Pig
Prices (Ex.
VAT)

The Grade E Pig price for week commencing 04/11/2019 was €182.93 per 100Kg compared to €139.00 in the same week last year, which represents a 32% increase.

Slaughtering

68,604 pigs were slaughtered in week 45 of which 2,017 were sows. The cumulative figure for pig slaughterings in 2019 is 2,923,325 which is a 1% decrease with the same point last year.

Sheepmeat

Sheepmeat
Prices (Ex.
VAT)

The national average price for the week commencing 04/11/2019 was €413.4 per 100Kg, a decrease of 1% over the same week last year.

Slaughtering

61,940 sheep were slaughtered at sheep export premises the week commencing 04/11/2019, compared to 67,499 in the same week of 2018. Sheep slaughterings for 2019 are 8% down on 2018 at 2,372,990 head.

Live Trade

Total live exports to European Countries stood at 6,227 head to the end of August 2019.

Poultry

Slaughtering

Cumulative poultry slaughterings for 2019* stand at 91,944,411 birds at the end of week 45, up 8% compared to the same period last year.

*Latest Figures are provisional and subject to change

Dead Weight Prices	W/C	W/C	Same week 2018	% change prev week	% change 2018
	04/11/19	28/10/19	05/11/18		
Steers (R3) (c/kg)	343.4	344.2	366.3	-0.2%	-6.3%
Heifers (R3) (c/kg)	351.6	353.6	378.6	-0.6%	-7.1%
Young Bulls (U3) (c/kg)	328.5	329.8	376.5	-0.4%	-12.8%
Cows (04) (c/kg)	258.9	259.7	293.2	-0.3%	-11.7%

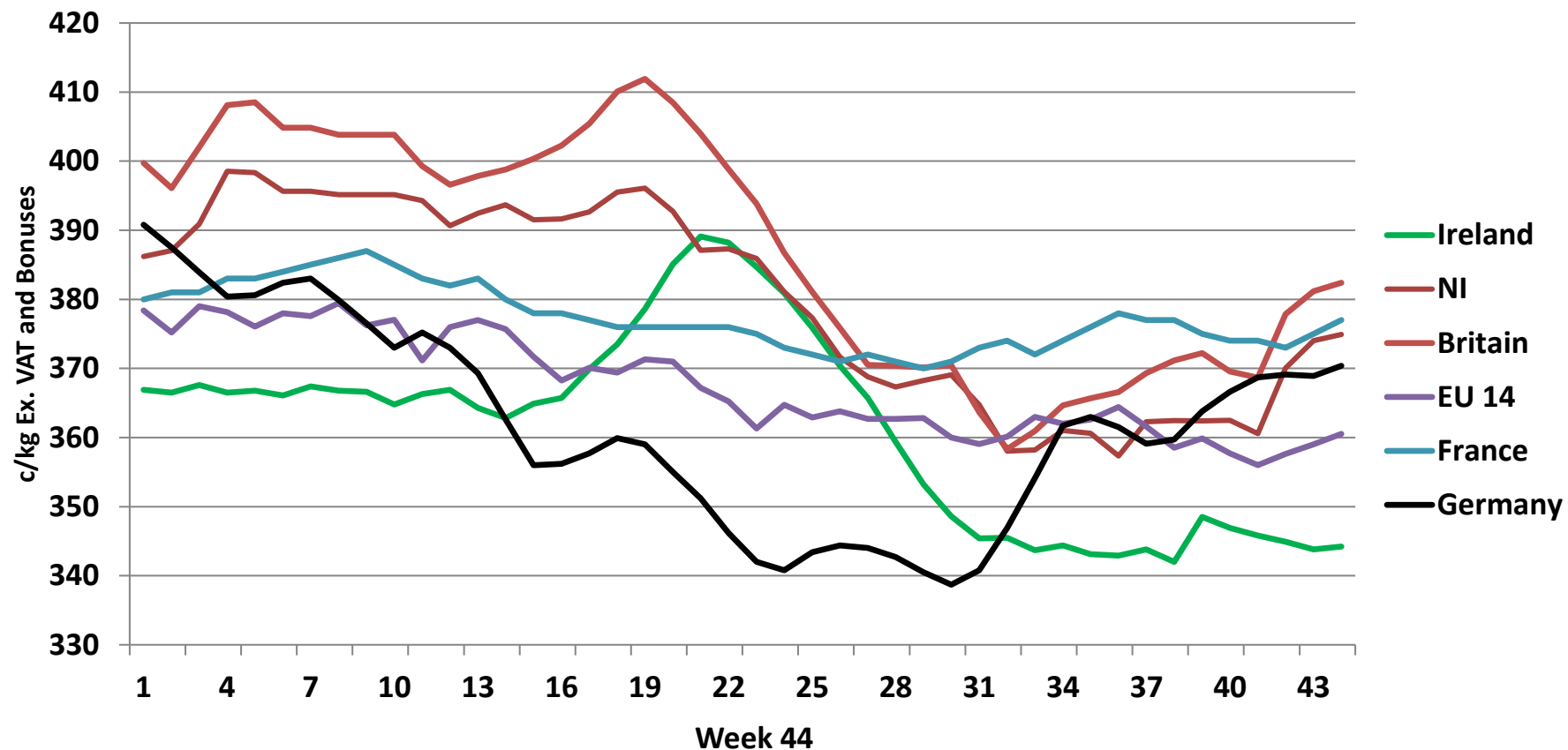
Live Weight Prices	W/C	W/C	Same week 2018	% change previous week	% change 2018
	04/11/19	28/10/19	05/11/18		
Yearlings (Male) (Aged 365 - 730 days) - (€/100Kg)	166	165	176	0.6%	-5.7%
Yearlings (Female) (Aged 365 - 730 days) - (€/100Kg)	172	176	182	-2.3%	-5.5%
Young Stores (Male & Female) (Aged 180 - 364 days) - (€/100Kg)	199	201	208	-1.0%	-4.3%
Bull Calf (€/head) Dairy	71.7	73.6	101.1	-2.6%	-29.1%
Bull Calf (€/head) Beef	166.6	190.5	231.9	-12.5%	-28.1%
Bull Calf (€/head) Average	119.2	132.0	166.5	-9.8%	-28.4%

Slaughter Figures	% of weekly figures	W/C	Same week 2018	Year to Date		Change 2019 v 2018	
		04-Nov-19		2019	2018	Head	%
Steers	41.8%	16,238	13,704	537,519	585,022	-47,503	-8.1%
Cows	21.2%	8,219	9,403	299,199	344,080	-44,881	-13.0%
Heifers	27.7%	10,733	10,369	433,375	415,453	17,922	4.3%
Young Bulls	7.9%	3,061	3,004	181,135	172,366	8,769	5.1%
Mature Bulls	1.5%	565	467	31,011	27,622	3,389	12.3%
Total	100%	38,816	36,947	1,482,239	1,544,543	-62,304	-4.0%

821

Live Exports	W/C	Same week	W/C	Year to Date		Change 2019 v 2018	
	28-Oct-19	2018	21-Oct-19	2019	2018	Head	%
Northern Ireland	907	1,019	748	27,456	19,276	8,180	42%
EU Except NI	755	1,768	1,918	229,481	189,942	39,539	21%
Third Countries	2,821	122	0	16,437	18,324	-1,887	-
Total	4,483	2,909	2,666	273,374	227,542	45,832	20%
Calves YTD:	195,138			Adult YTD:Cattle		78,097	

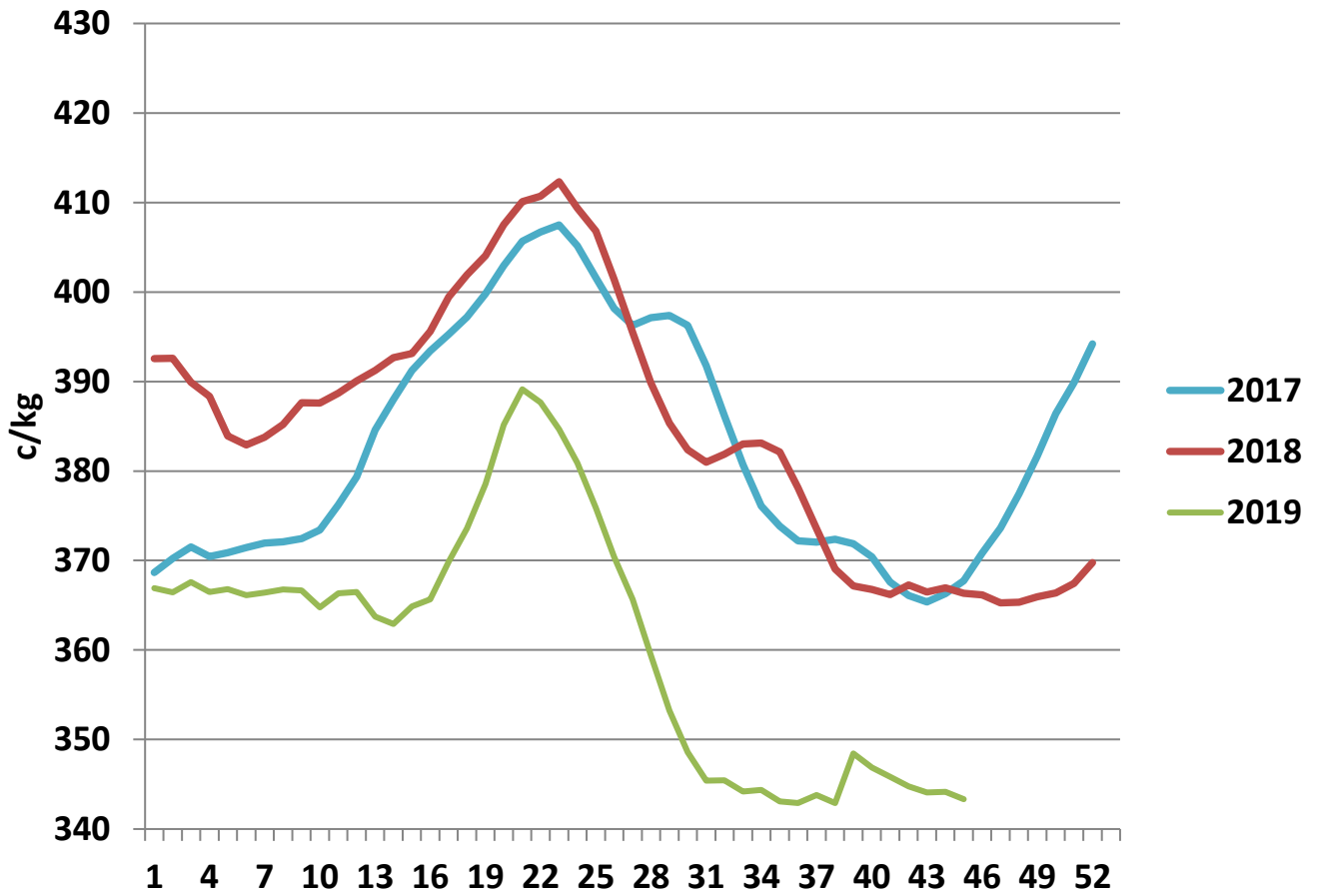
Irish Deadweight Cattle Prices vs Selected Other Markets, 2019



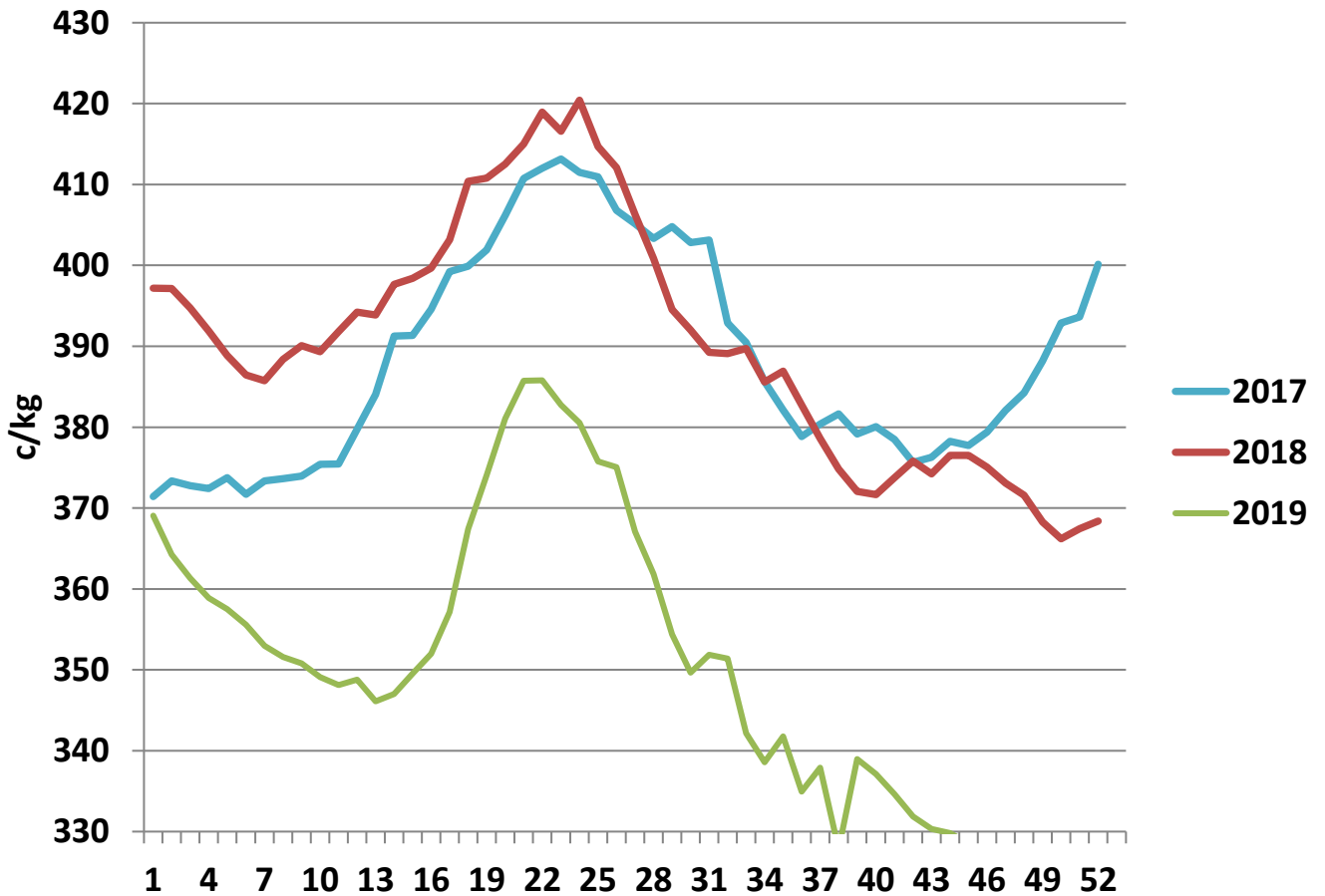
Livestock Pricing

	Ireland	NI	Britain	EU 14 Average	France	Germany
W/C 28/10/19	344	375	382	360	377	370

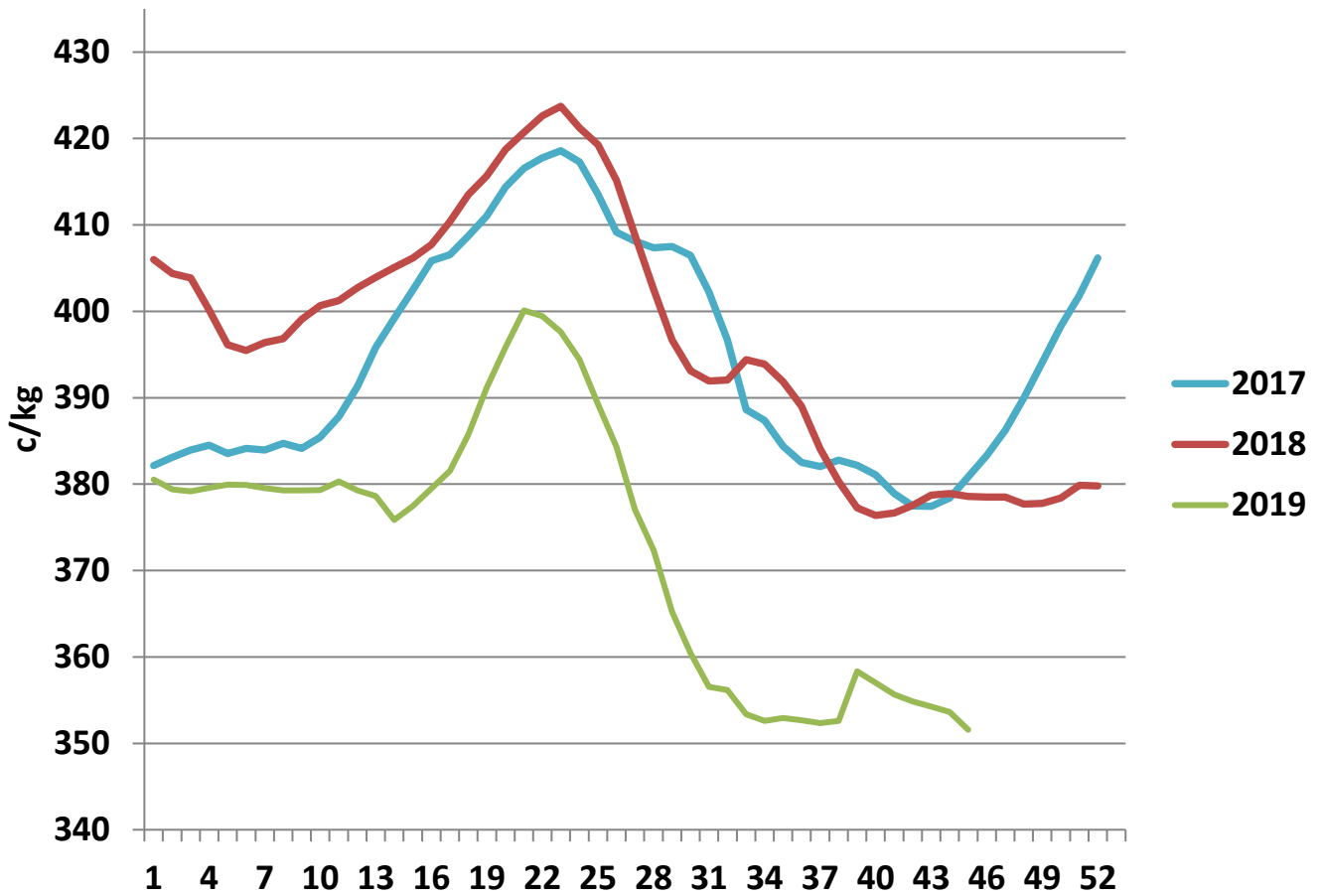
R3 Steer prices ex. VAT



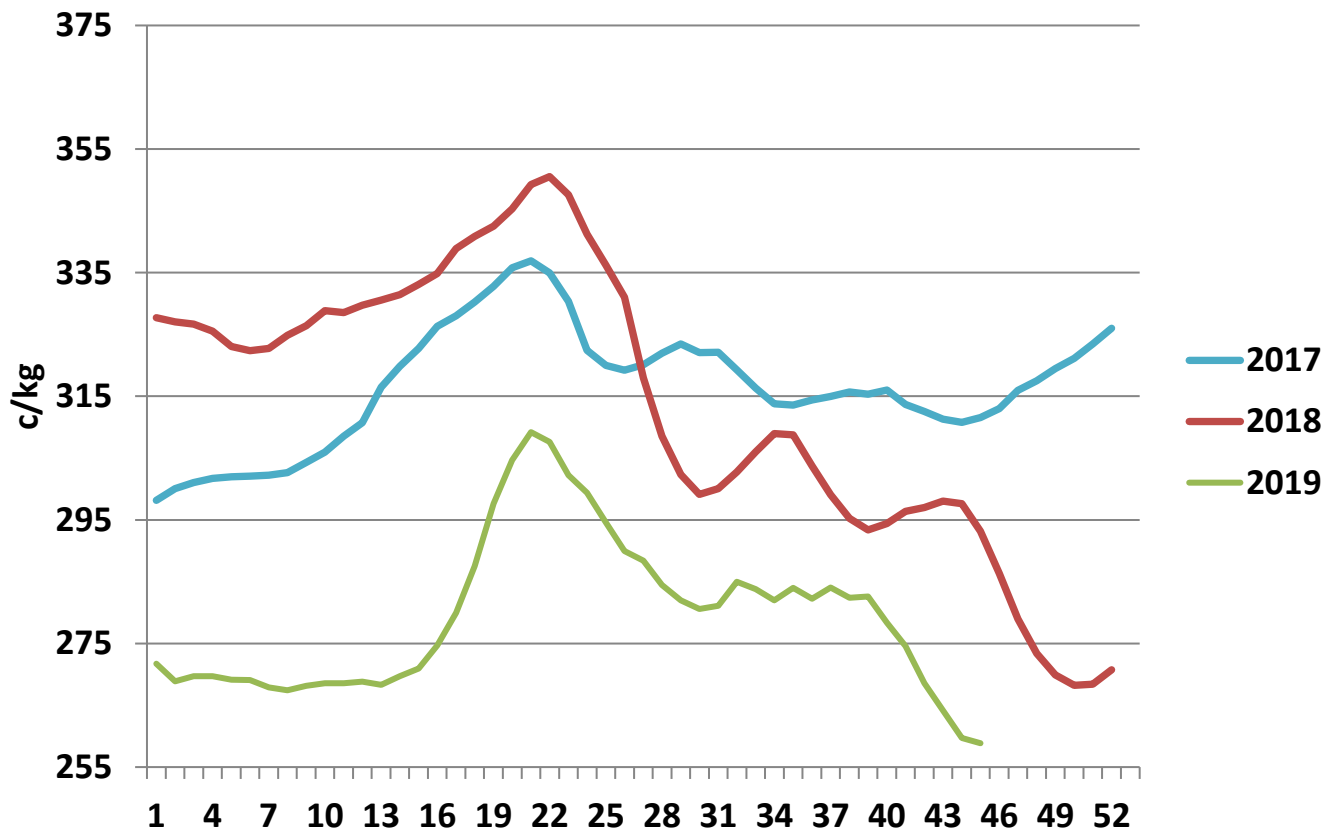
U3 Young Bull prices ex. VAT



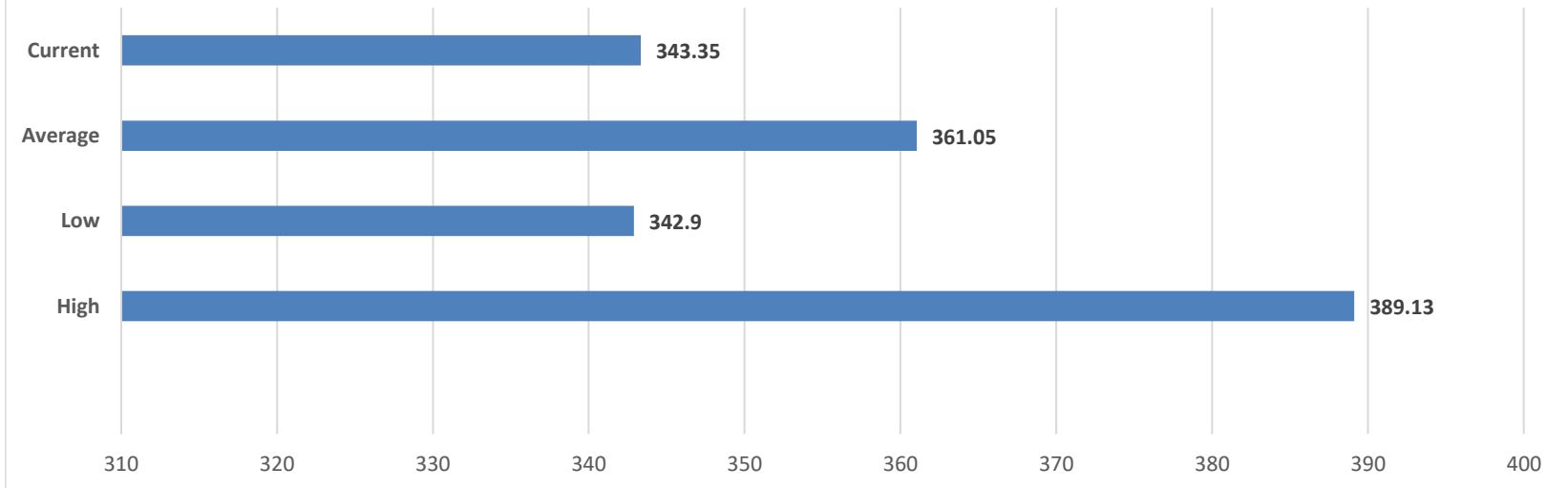
R3 Heifer prices ex. VAT



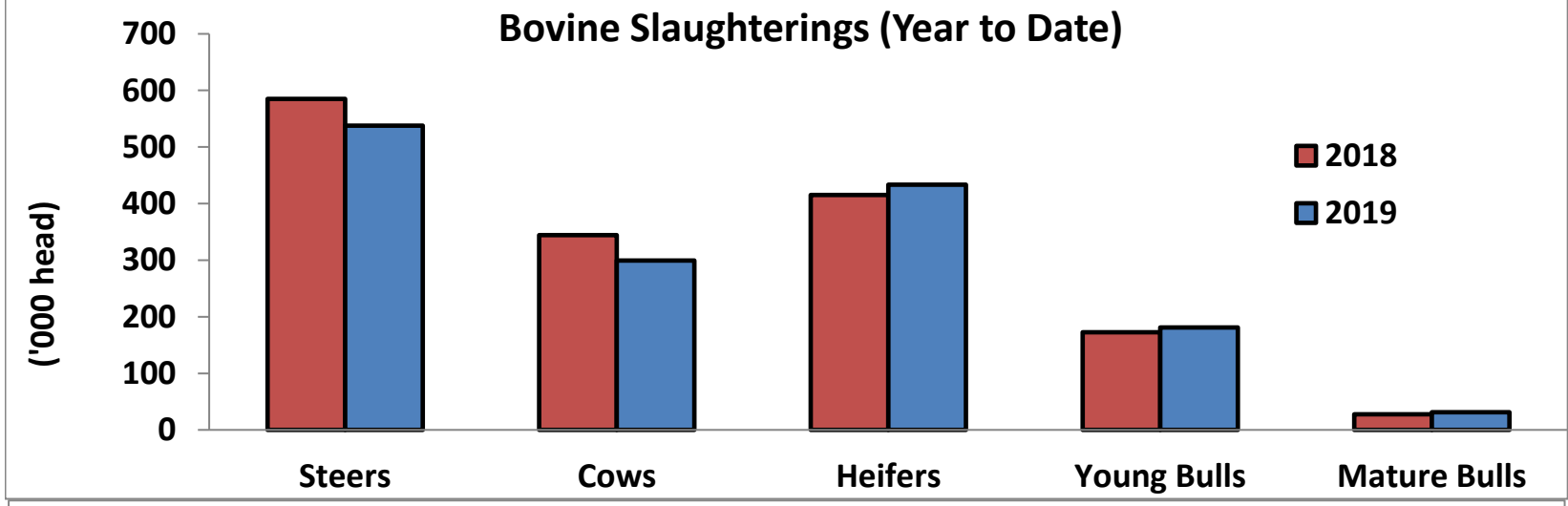
O4 Cow prices ex. VAT



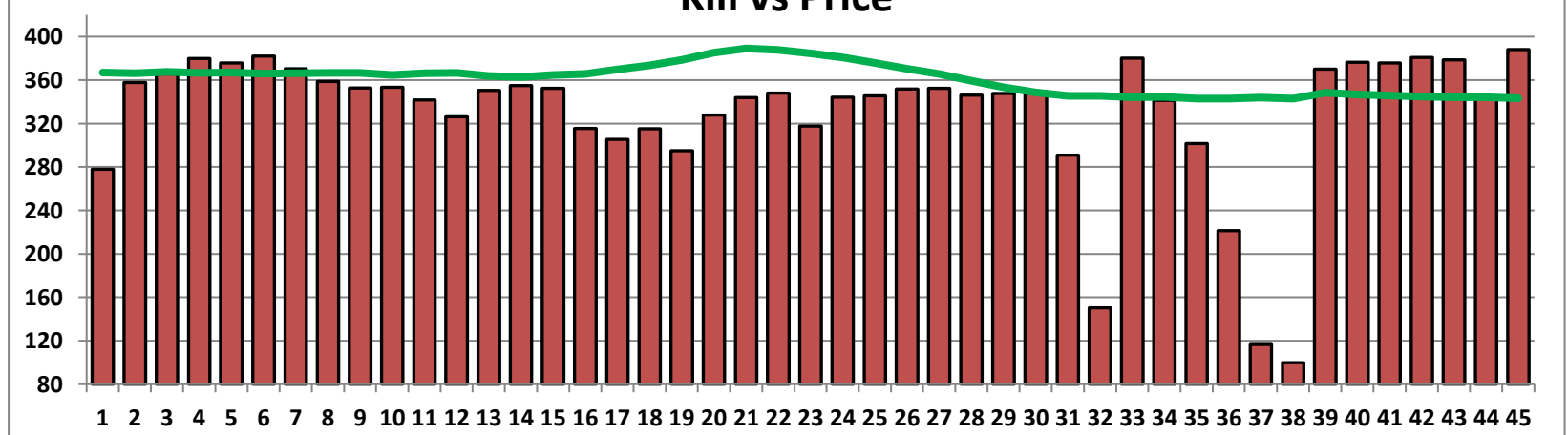
6 Month R3 Steer Statistics



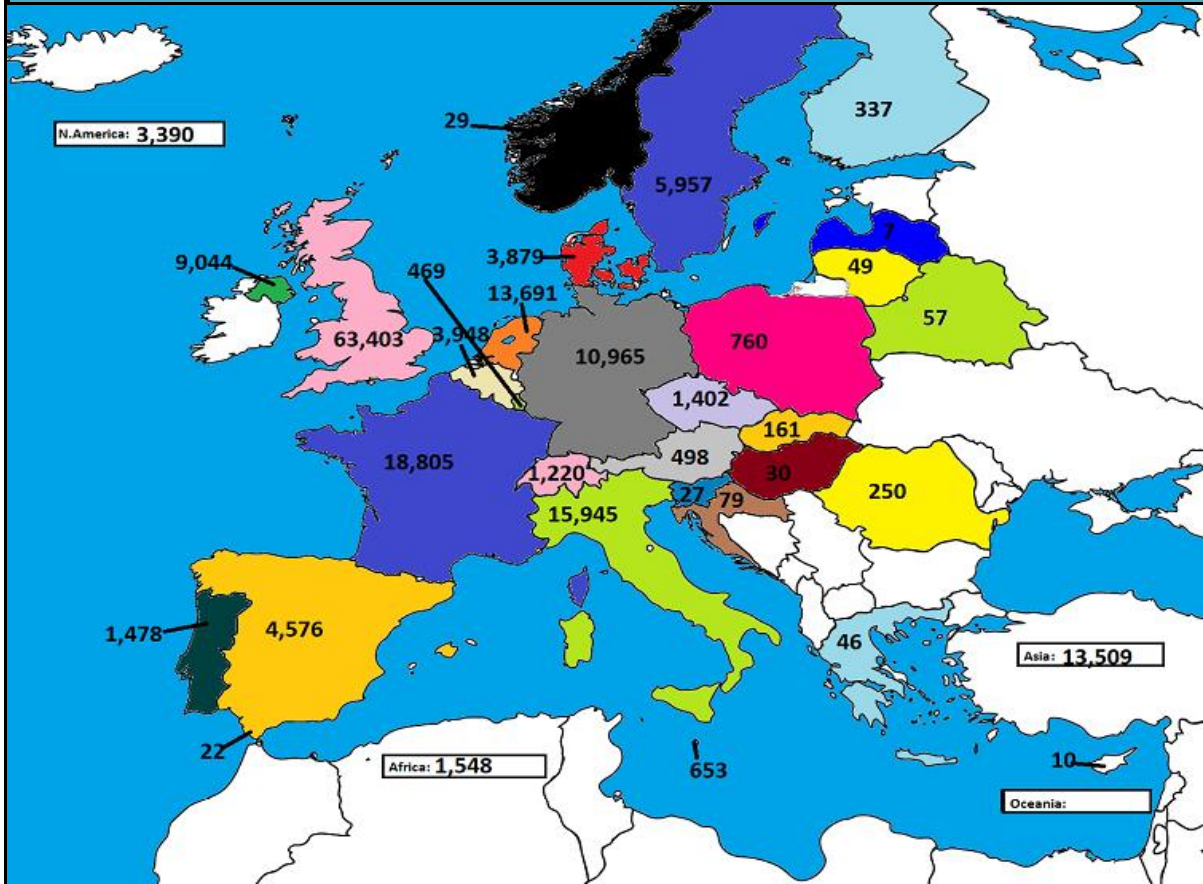
Bovine Slaughtering (Year to Date)



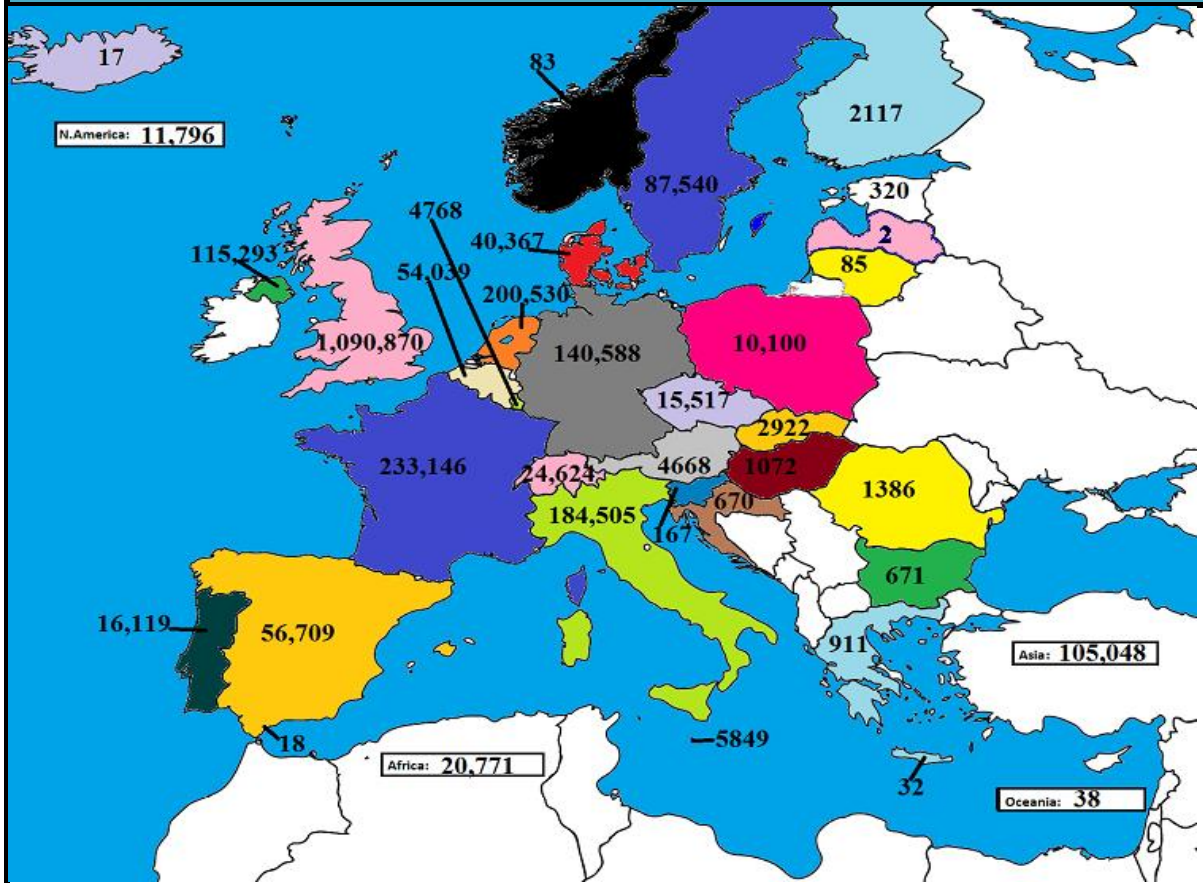
Kill vs Price



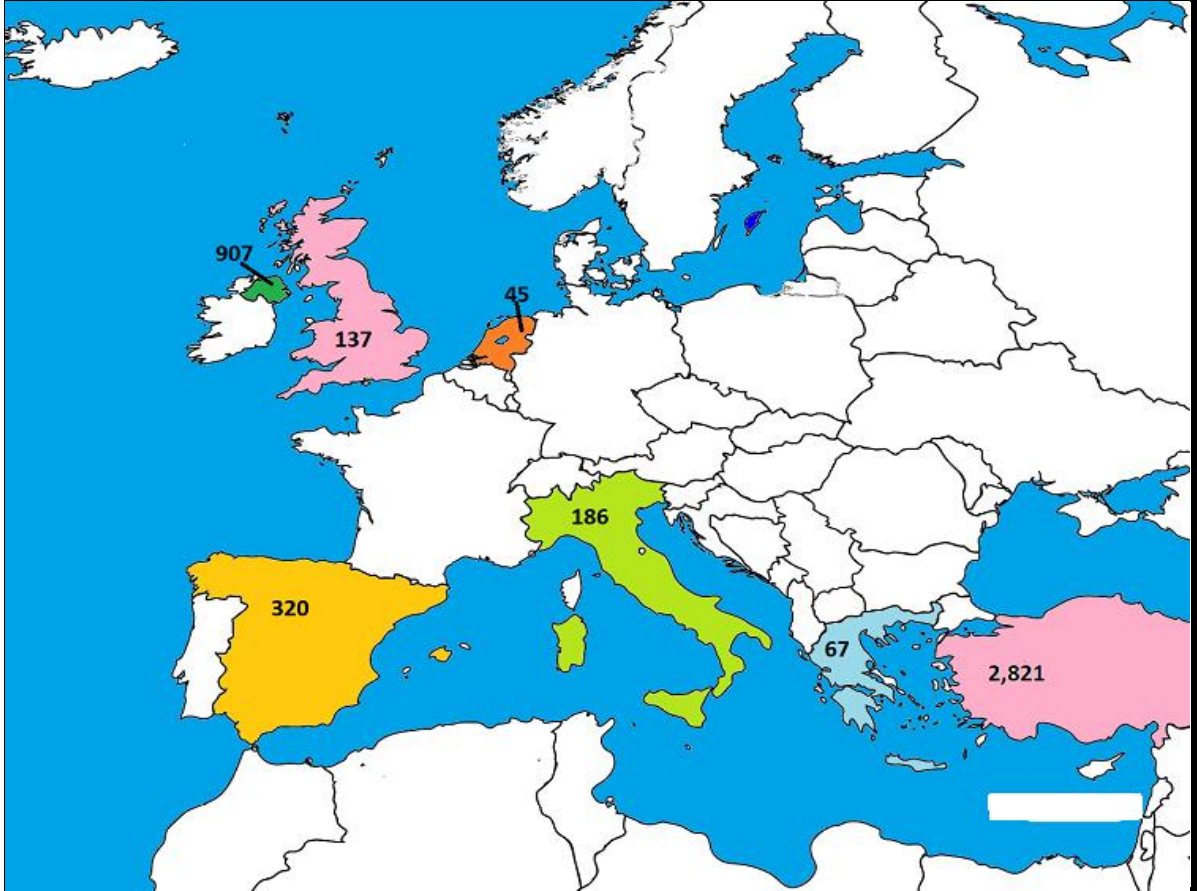
August 2019 Beef exports, €000 (CSO figures)



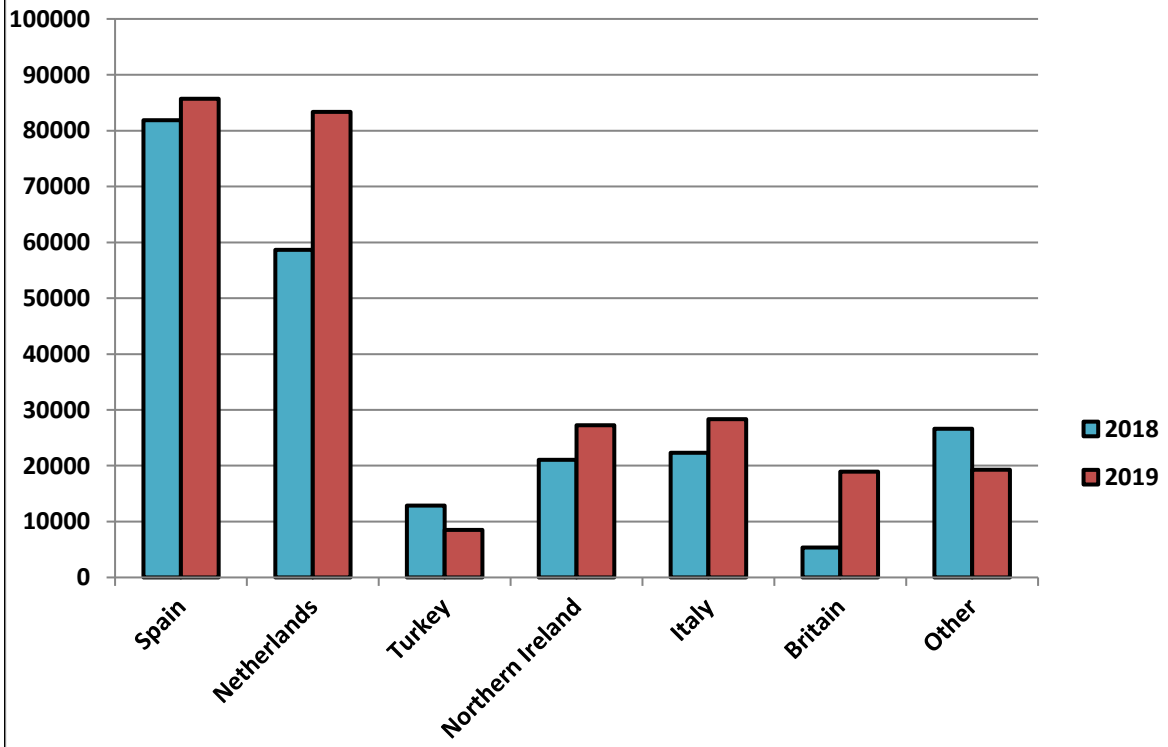
Cumulative beef exports to Dec 2018, €000 (CSO figures)



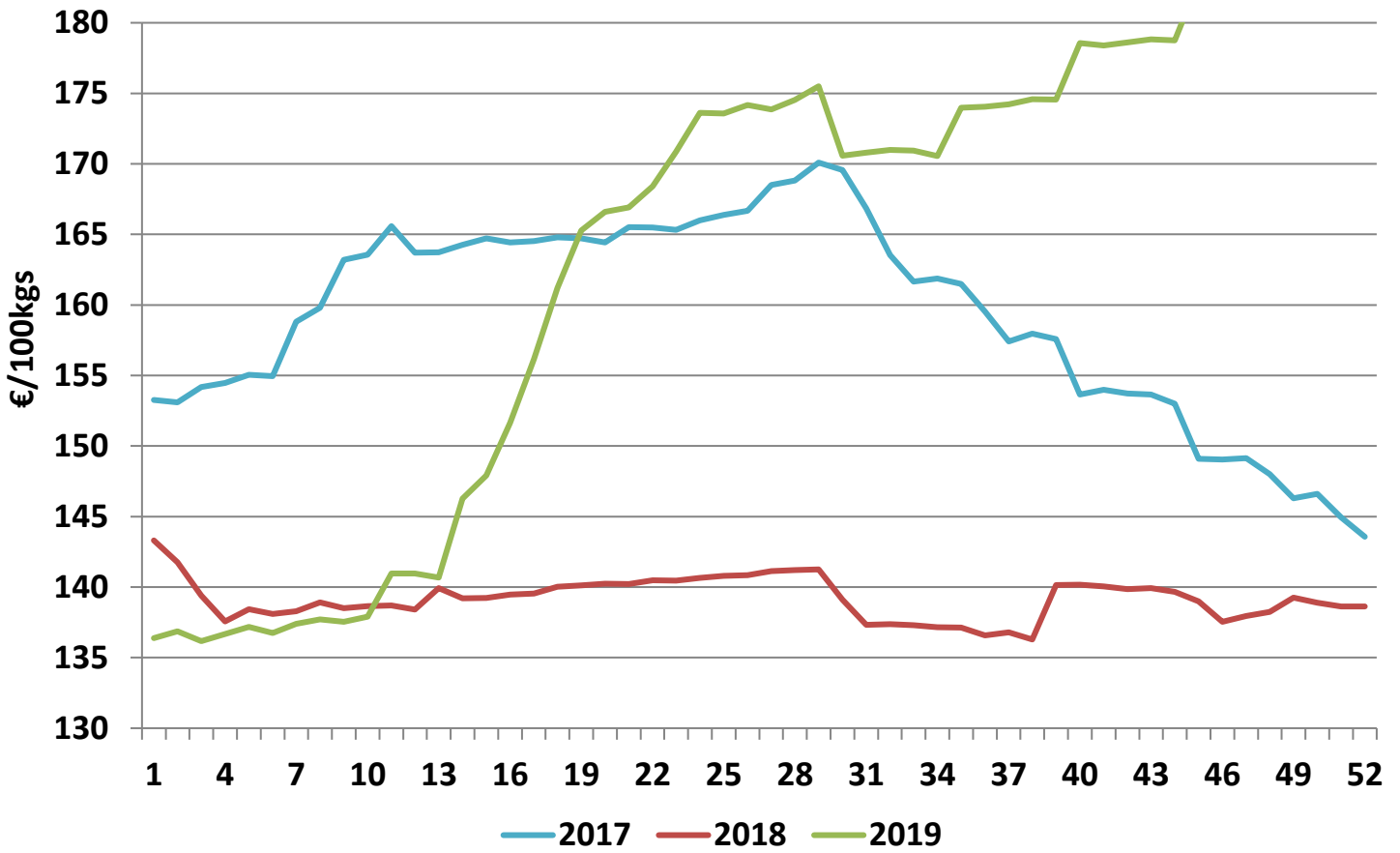
Cattle exported, w/c 28/10/19



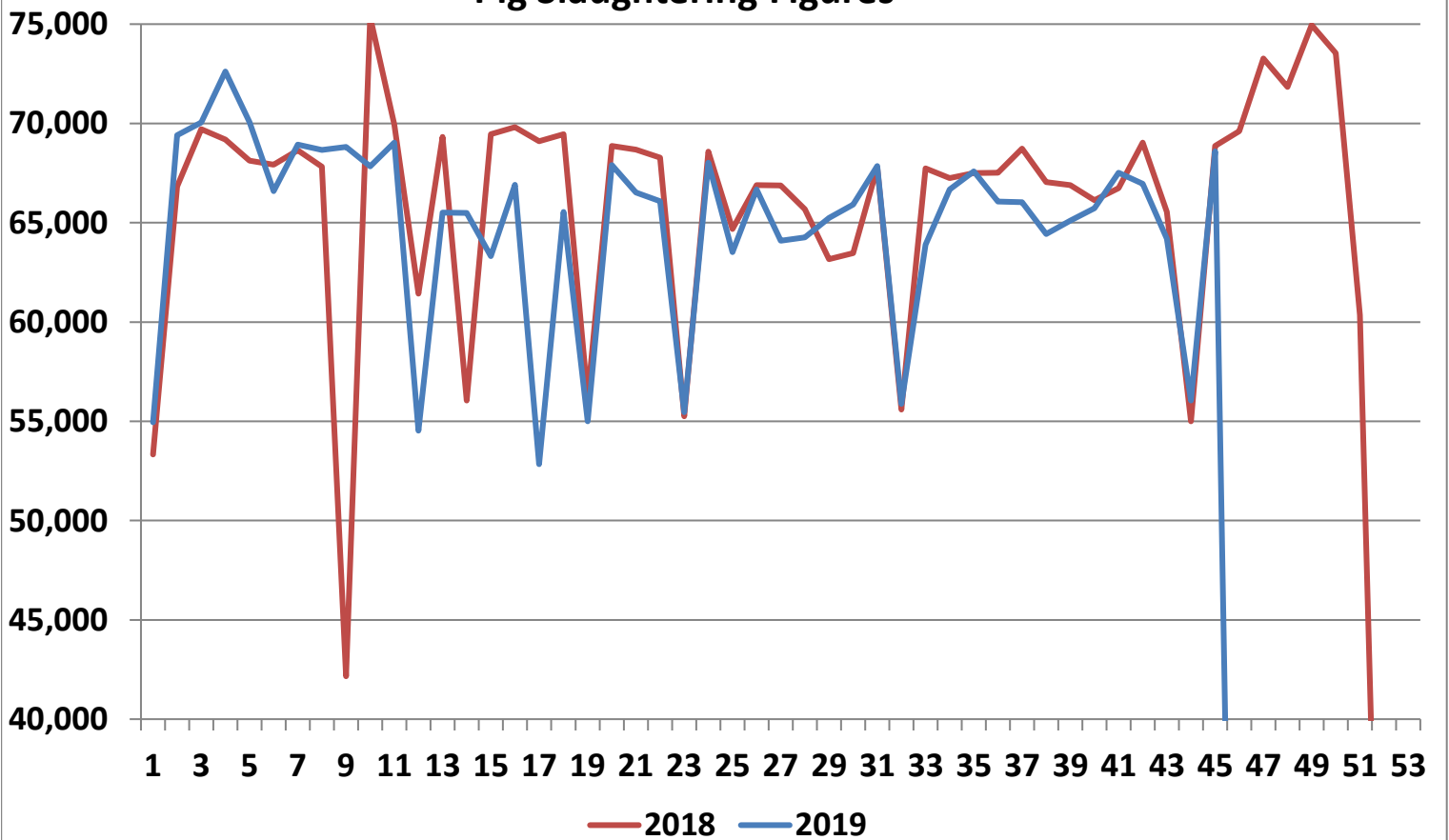
Cumulative cattle export figures, 2019



Average Grade E Pig Price



Pig Slaughtering Figures



Sheepmeat Information for Week 45

NOTE: EU PRICES ARE PROVISIONAL AT THE TIME OF PUBLICATION AND MAY NOT BE REFLECTIVE OF THE CURRENT PERIOD

Irish Prices €/100 kg	2019	2018	Change
Ave Factory Price	431.77	431.76	0.0%
Ave Mart Price	370.54	385.95	-4.0%
National Ave Price	413.4	418.02	-1.1%
YTD Ave	461.87	487.78	-5.3%

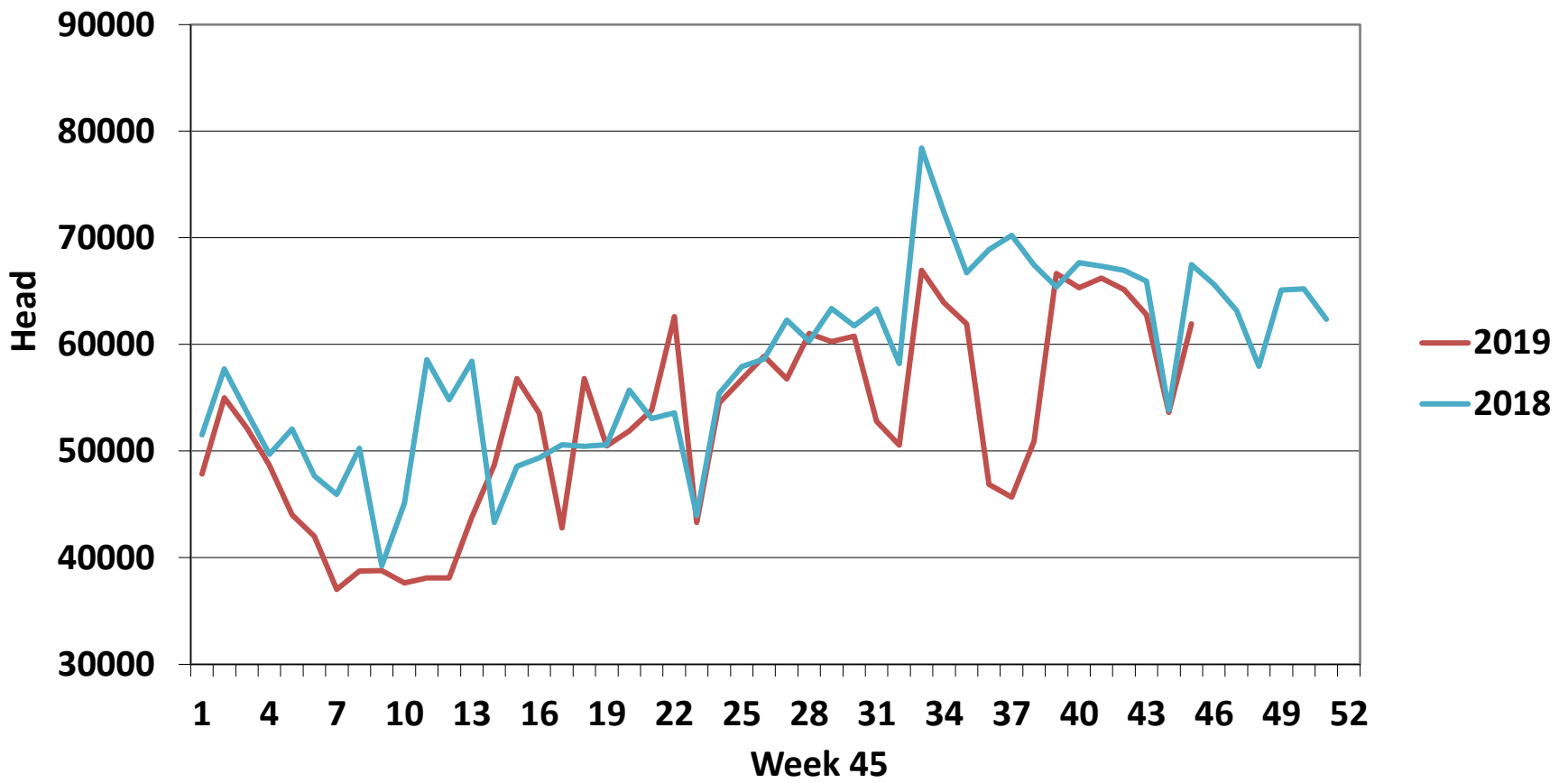
EU Market Rates Heavy Lambs	€/100kg
Belgium	468.7
Denmark	512.7
Germany	528.2
Spain	561.5
France	625.0
Croatia	468.4
Ireland	413.4
Italy	583.0
Cyprus	608.0
Latvia	347.0
Lithuania	412.0
Netherlands	477.6
Austria	554.0
Poland	435.9
Romania	223.3
Finland	401.0
Sweden	404.9
Northern Ireland	395.0
Great Britain	452.5
United Kingdom	448.4
Community	482.8

Slaughterings	2019	2018	Change
Weekly	61,940	67,499	-8%
YTD	2,372,990	2,583,908	-8%

**REPORT ON SLAUGHTERING AT SHEEP EXPORT PREMISES
WEEK 45**

CATEGORY	2019		2018		DIFFERENCE	
	Weekly	Cumulative	Weekly	Cumulative	Weekly	Cumulative
Lambs/Hoggets	53	738,619	87	829,396	-34	90,777
Spring Lambs	52,553	1,281,772	56,270	1,315,745	-3,717	33,973
Ewes and Rams	9,334	352,028	11,137	438,617	-1,803	86,589
Light Lambs		571	5	150	-5	421
TOTAL	61,940	2,372,990	67,499	2,583,908	-5,559	-210,918

Weekly Sheep Slaughterings



Ave. Price €/100 kg for Sheepmeat

