

# Meat Market Report

18/11/19 - 24/11/19

Week

47



**An Roinn Talmhaíochta,  
Bia agus Mara**

Department of Agriculture,  
Food and the Marine

# MARKET SUMMARY

## Beef

### Deadweight Prices c/100Kg (Including VAT)

	U3	U4	R3	R4	O3	O4	P+3
Steers	369.0	362.0	360.0	357.0	341.0	338.0	313.0
Heifers	382.0	378.0	369.0	367.0	353.0	351.0	308.0
Young Bulls	349.0	354.0	337.0	335.0	321.0	323.0	305.0
Cows			296.0	293.0	273.0	271.0	256.0

### Liveweight Prices

*Bull Calf Average Price	€138.3 per head (Excluding VAT)
**Young Store Average Price	€196.0 per 100kg (Excluding VAT)
***Yearling (male & female) Price	€171.0 per 100kg (Excluding VAT)

\* Aged 8-28 days \*\* Aged 180-364 days, Male & Female \*\*\*age 365-730 days

### Slaughterings

39,499 cattle slaughtered this week, of which steers were 15,503 (39%), heifers 11,295 (29%), young bulls 4,049 (10%) and cows 8,059 (20%). Total YTD slaughter is 1,560,728 compared to 1,624,842 in 2018, a 4% decrease.

### Live Trade

2,817 cattle were exported in the week commencing 18/11/2019, 1,625 to EU (Except NI). Live exports for 2019 amount to 284,562 compared to 236,083 in 2018, up 21% on 2018 levels.

\*This data is provisional and subject to revision.

The next meeting of the Management Committee for the Common Organisation of Agricultural Markets (Animal Products Sector) is 12th December 2019

### CONTENTS:

Page 2: Market Summary Beef  
 Page 3: Market Summary Other Meats  
 Page 4: Beef Price and Slaughter Summary  
 Page 5: Comparative Beef Prices  
 Page 6: Steer and Young Bull Price  
 Page 7: Heifer and Cow Graphs  
 Page 8: Price and Slaughter Graphs  
 Page 9: Liveweight Beef Graphs

Page 10: Beef Export Maps  
 Page 11: Beef Export Info  
 Page 12: Pig price and slaughter graphs  
 Page 13: Sheep prices and slaughter  
 Page 15: Sheep price and slaughter graphs

# MARKET SUMMARY

## Pigmeat

Grade E Pig  
Prices (Ex.  
VAT)

The Grade E Pig price for week commencing 18/11/2019 was €188.77 per 100Kg compared to €137.96 in the same week last year, which represents a 37% increase.

Slaughtering

71,294 pigs were slaughtered in week 47 of which 1,958 were sows. The cumulative figure for pig slaughterings in 2019 is 3,062,867 which is a 1% decrease with the same point last year.

## Sheepmeat

Sheepmeat  
Prices (Ex.  
VAT)

The national average price for the week commencing 18/11/2019 was €434.65 per 100Kg, a decrease of 0.2% over the same week last year.

Slaughtering

62,520 sheep were slaughtered at sheep export premises the week commencing 18/11/2019, compared to 63,205 in the same week of 2018. Sheep slaughterings for 2019 are 8% down on 2018 at 2,492,628 head.

Live Trade

Total live exports to European Countries stood at 6,227 head to the end of August 2019.

## Poultry

Slaughtering

Cumulative poultry slaughterings for 2019\* stand at 94,024,451 birds at the end of week 46, up 8% compared to the same period last year.

\*Latest Figures are provisional and subject to change

Dead Weight Prices	W/C	W/C	Same week 2018	% change prev week	% change 2018
	18/11/19	11/11/19	19/11/18		
Steers (R3) (c/kg)	341.7	343.3	365.3	-0.5%	-6.5%
Heifers (R3) (c/kg)	350.4	351.2	378.5	-0.2%	-7.4%
Young Bulls (U3) (c/kg)	331.5	330.1	373.1	0.4%	-11.2%
Cows (04) (c/kg)	257.6	256.6	279.0	0.4%	-7.7%

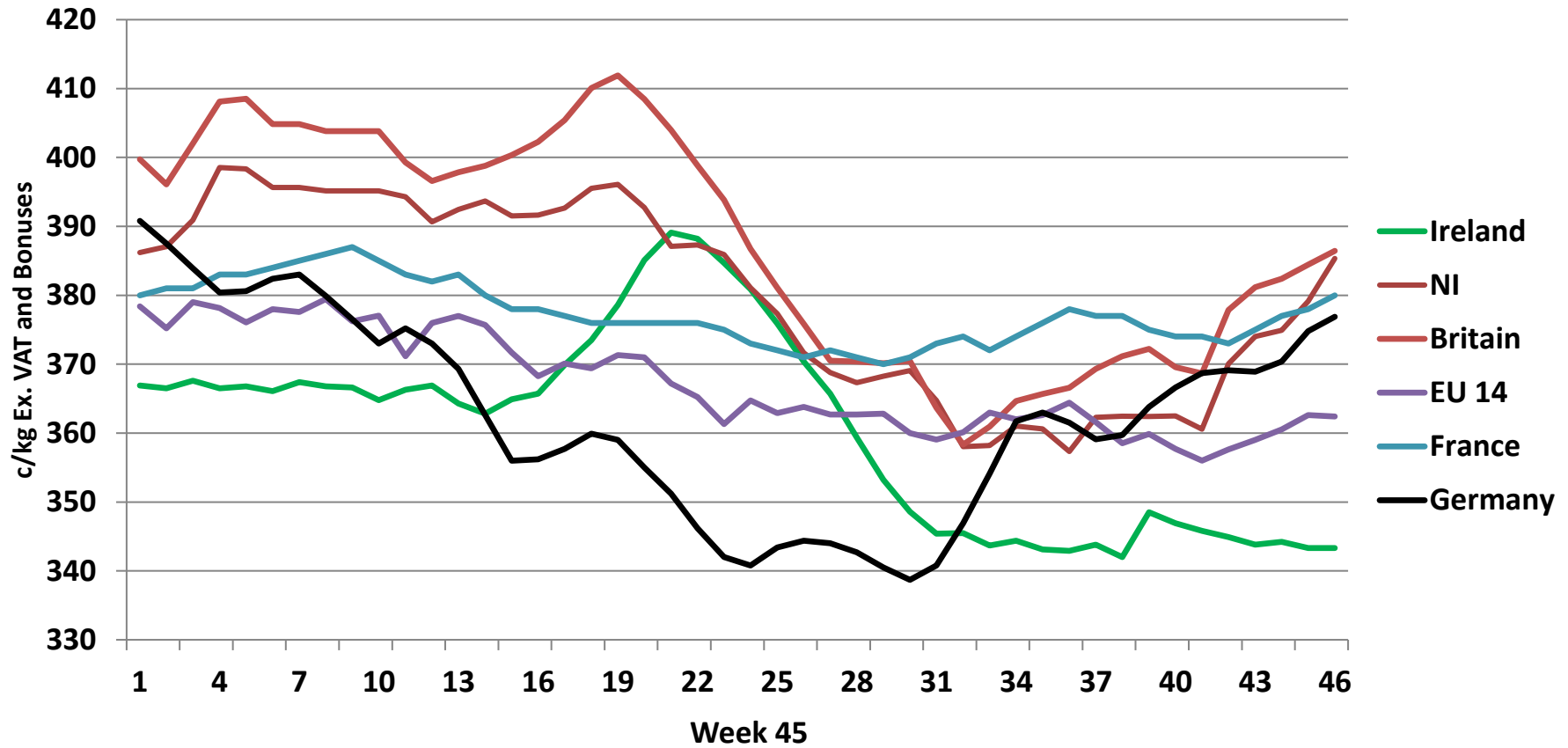
Live Weight Prices	W/C	W/C	Same week 2018	% change previous week	% change 2018
	18/11/19	11/11/19	19/11/18		
Yearlings (Male) (Aged 365 - 730 days) - (€/100Kg)	167	164	177	1.8%	-5.6%
Yearlings (Female) (Aged 365 - 730 days) - (€/100Kg)	175	171	177	2.3%	-1.1%
Young Stores (Male & Female) (Aged 180 - 364 days) - (€/100Kg)	196	199	202	-1.5%	-3.0%
Bull Calf (€/head) Dairy	89.0	90.7	104.4	-1.8%	-14.7%
Bull Calf (€/head) Beef	187.6	237.2	191.1	-20.9%	-1.8%
Bull Calf (€/head) Average	138.3	163.9	147.8	-15.6%	-6.4%

Slaughter Figures	% of weekly figures	W/C	Same week 2018	Year to Date		Change 2019 v 2018	
		18-Nov-19		2019	2018	Head	%
Steers	39.2%	15,503	13,197	568,866	615,072	-46,206	-7.5%
Cows	20.4%	8,059	8,958	314,838	361,848	-47,010	-13.0%
Heifers	28.6%	11,295	11,240	456,142	437,974	18,168	4.1%
Young Bulls	10.3%	4,049	3,447	188,678	181,352	7,326	4.0%
Mature Bulls	1.5%	593	501	32,204	28,596	3,608	12.6%
<b>Total</b>	<b>100%</b>	<b>39,499</b>	<b>37,343</b>	<b>1,560,728</b>	<b>1,624,842</b>	<b>-64,114</b>	<b>-3.9%</b>

821

Live Exports	W/C	Same week	W/C	Year to Date		Change 2019 v 2018	
	18-Nov-19	2018	11-Nov-19	2019	2018	Head	%
Northern Ireland	711	713	833	29,913	21,827	8,086	37%
EU Except NI	1,625	1,562	1,136	235,041	195,352	39,689	20%
Third Countries	481	156	657	19,608	18,904	704	-
<b>Total</b>	<b>2,817</b>	<b>2,431</b>	<b>2,626</b>	<b>284,562</b>	<b>236,083</b>	<b>48,479</b>	<b>21%</b>
<b>Calves YTD:</b>	<b>197,823</b>			<b>Adult YTD:Cattle</b>		<b>86,599</b>	

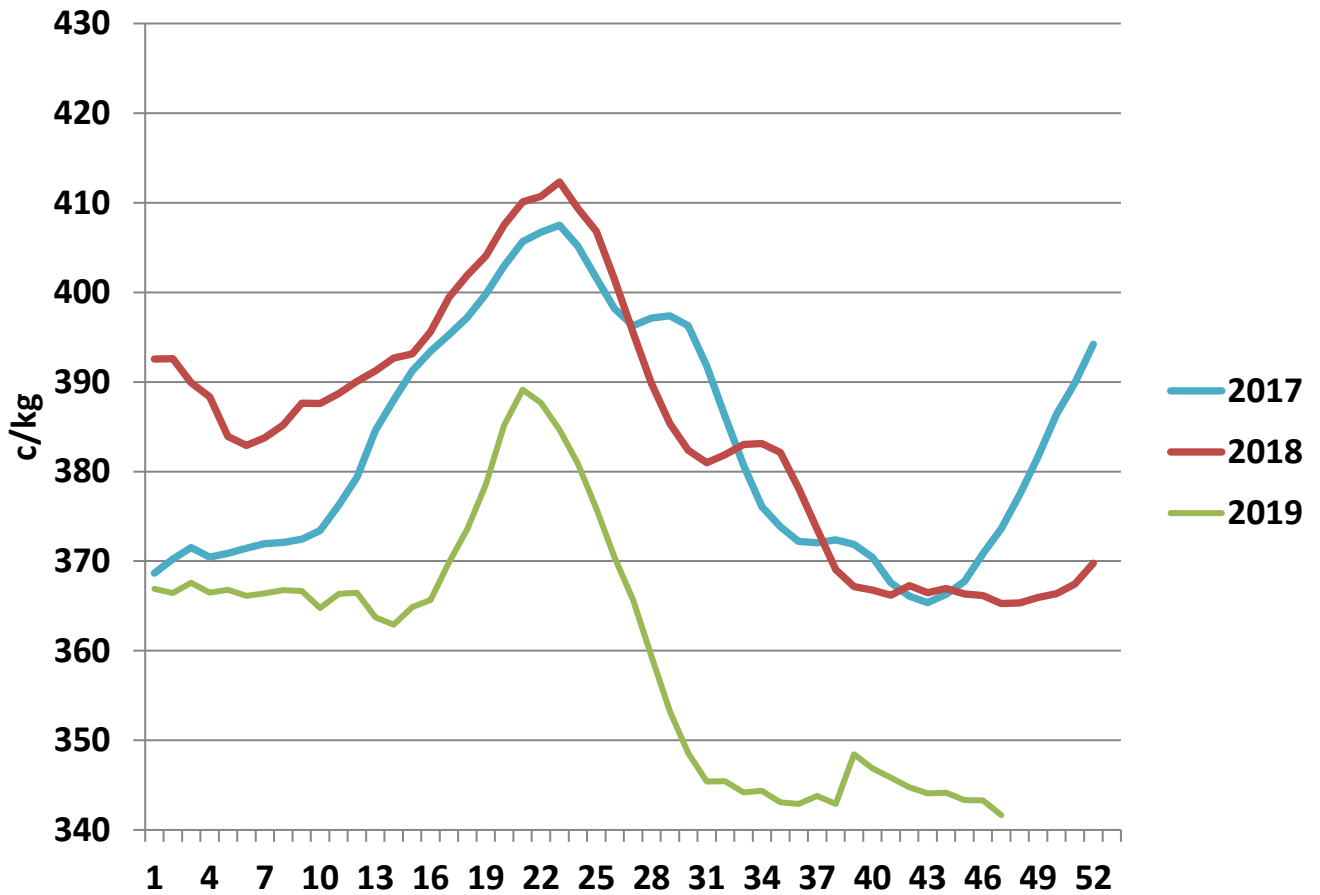
## Irish Deadweight Cattle Prices vs Selected Other Markets, 2019



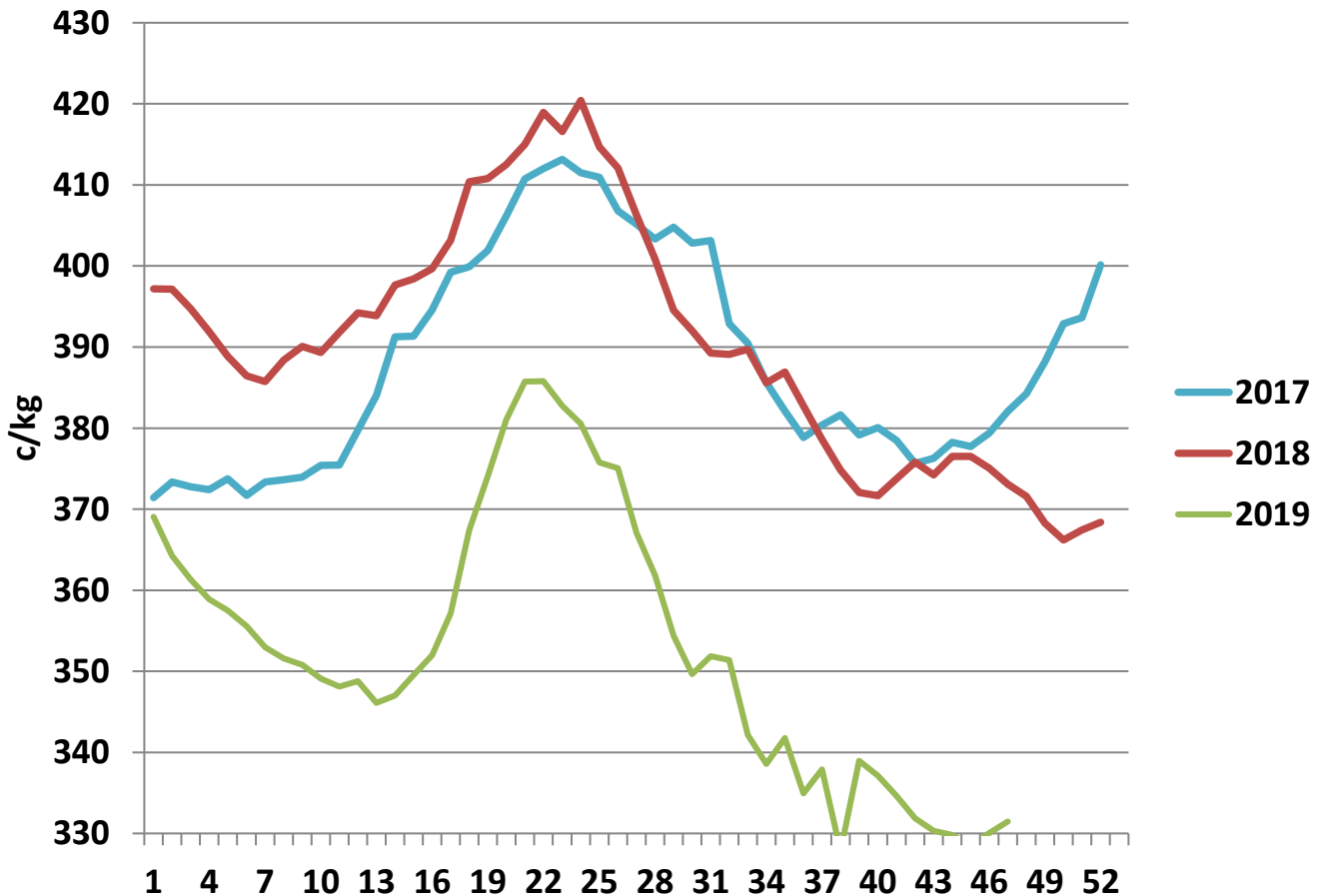
### Livestock Pricing

	Ireland	NI	Britain	EU 14 Average	France	Germany
<b>11/11/2019</b>	<b>343</b>	<b>385</b>	<b>386</b>	<b>362</b>	<b>380</b>	<b>377</b>

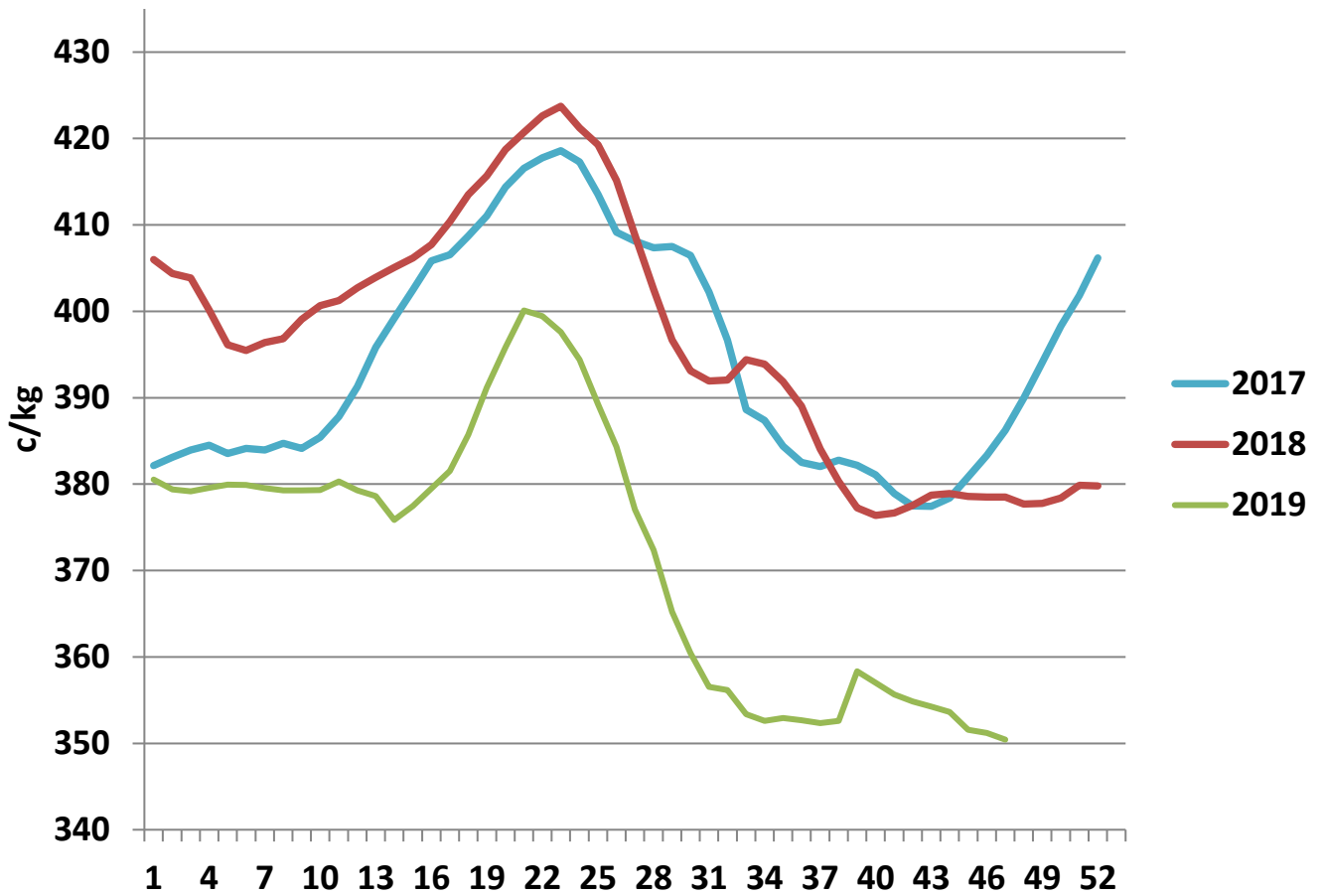
### R3 Steer prices ex. VAT



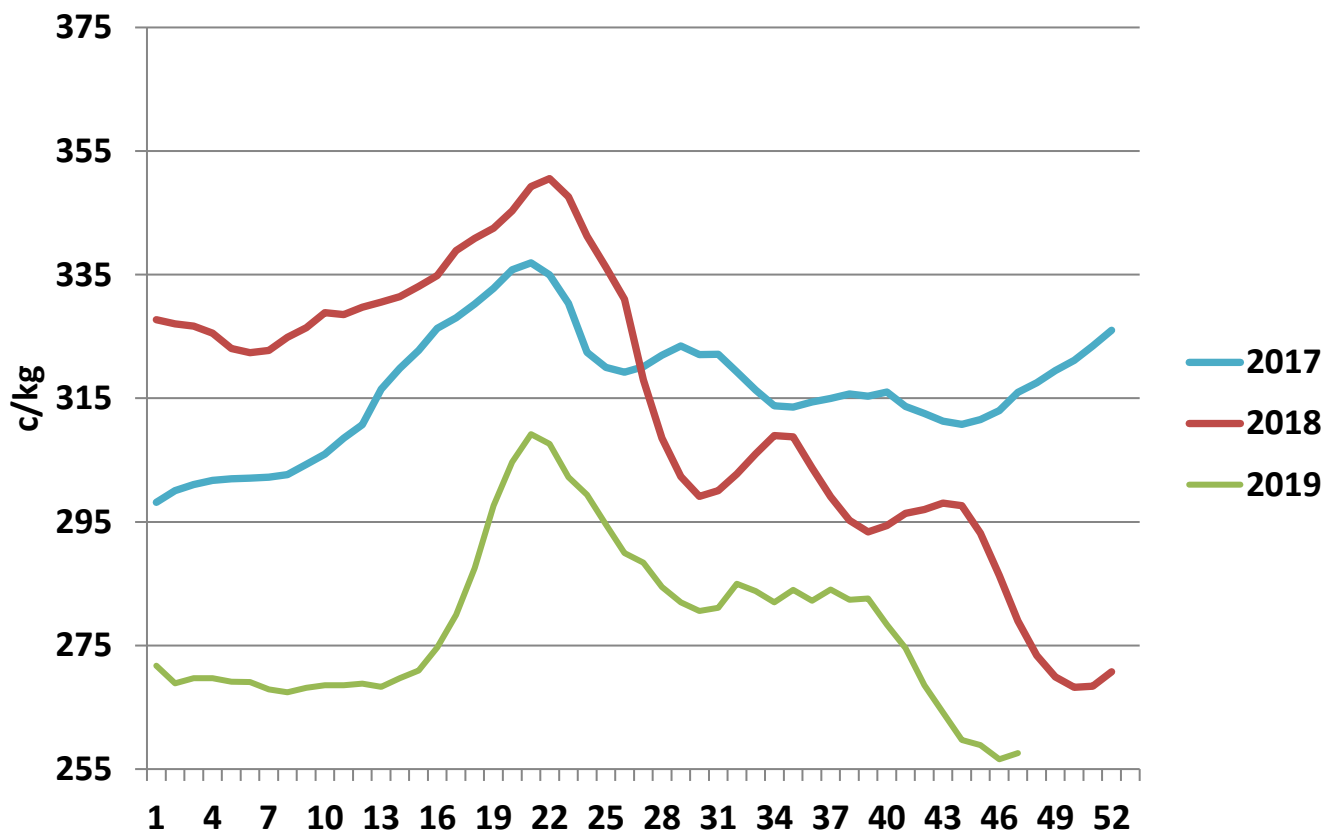
### U3 Young Bull prices ex. VAT



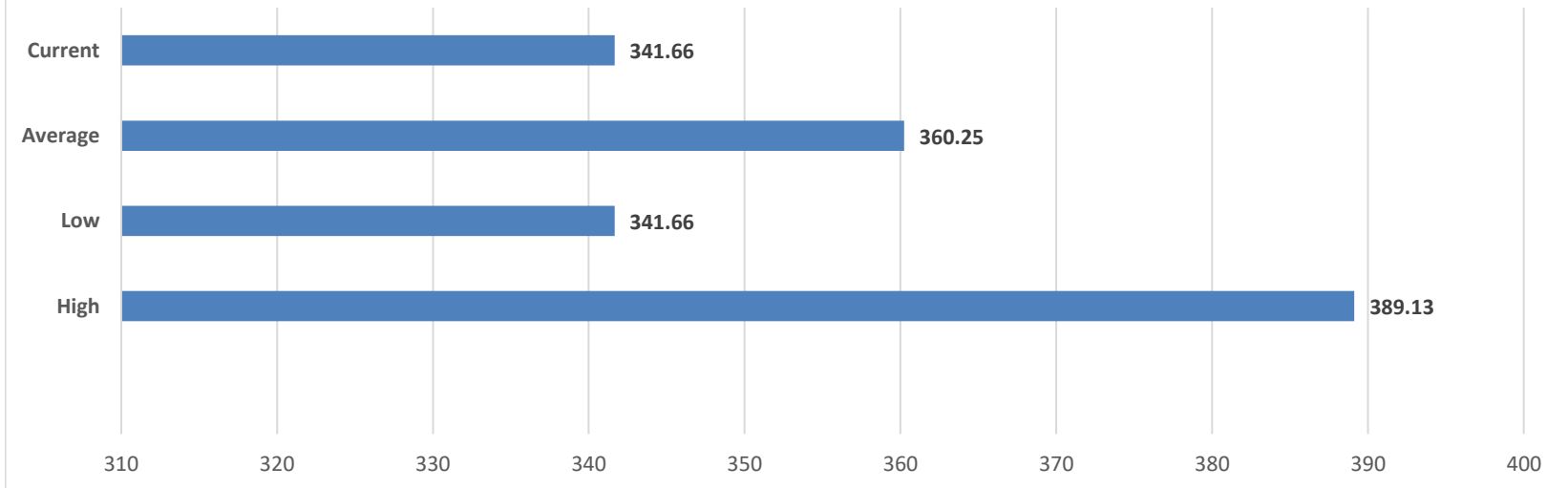
### R3 Heifer prices ex. VAT



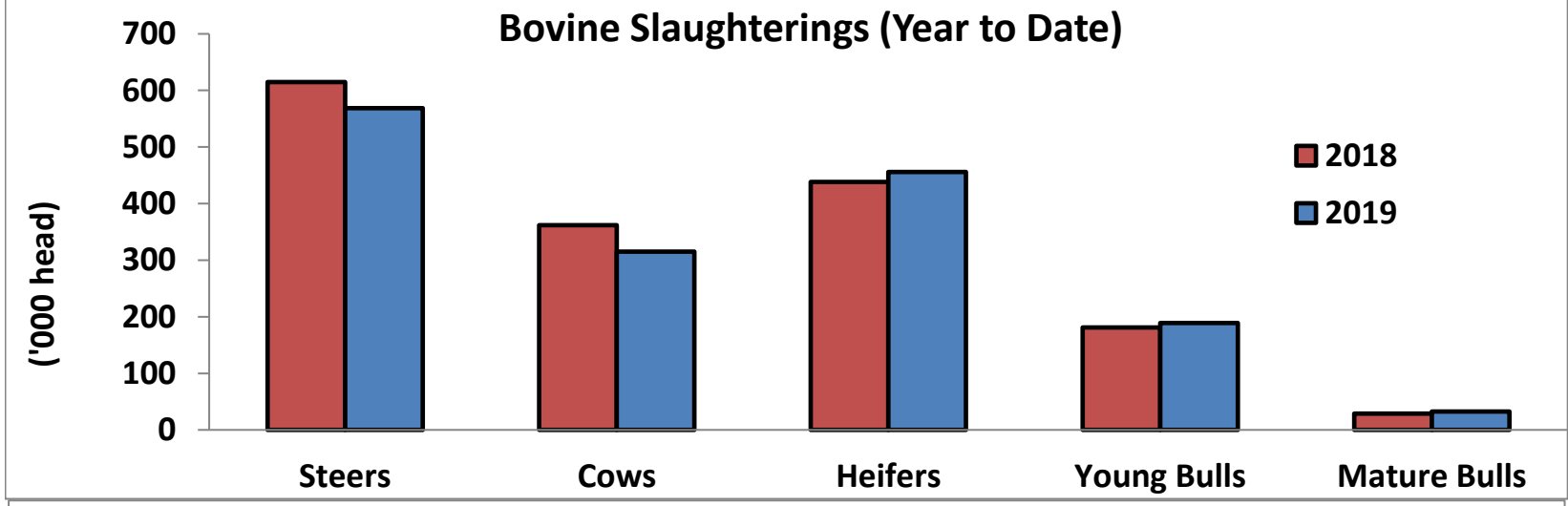
### O4 Cow prices ex. VAT



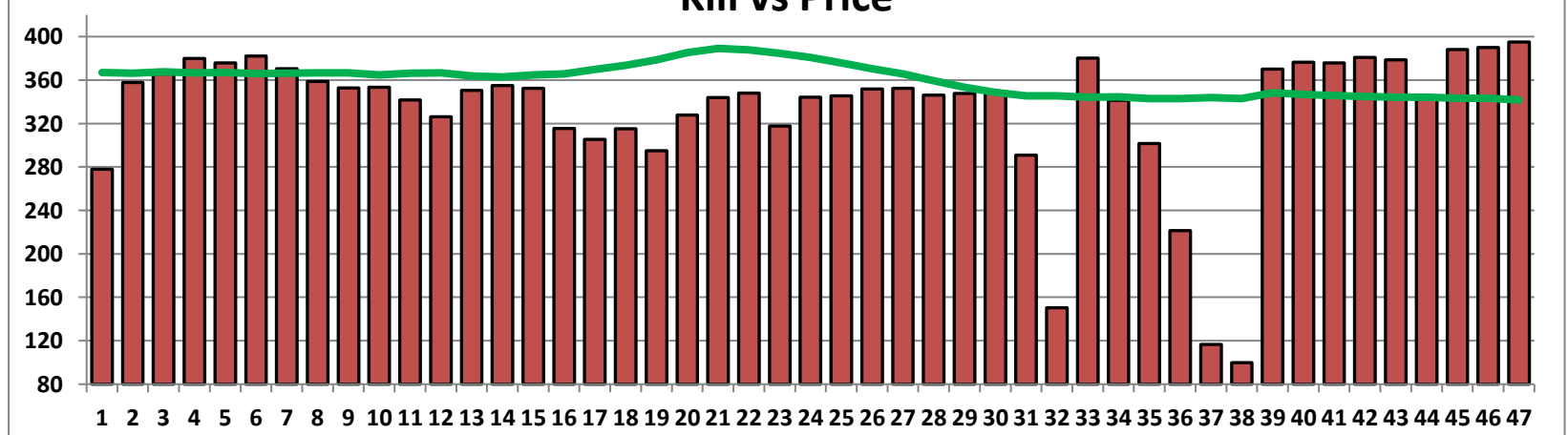
### 6 Month R3 Steer Statistics



### Bovine Slaughtering (Year to Date)

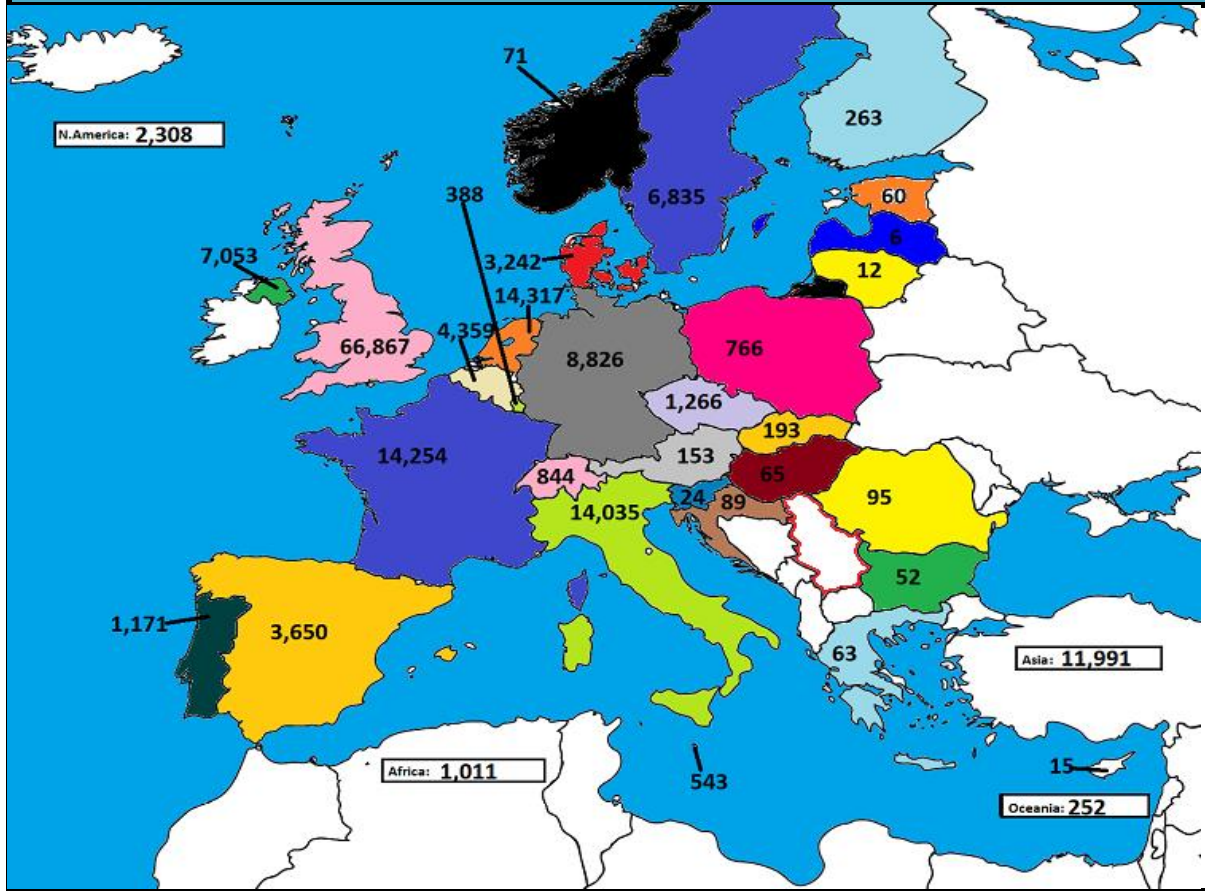


### Kill vs Price

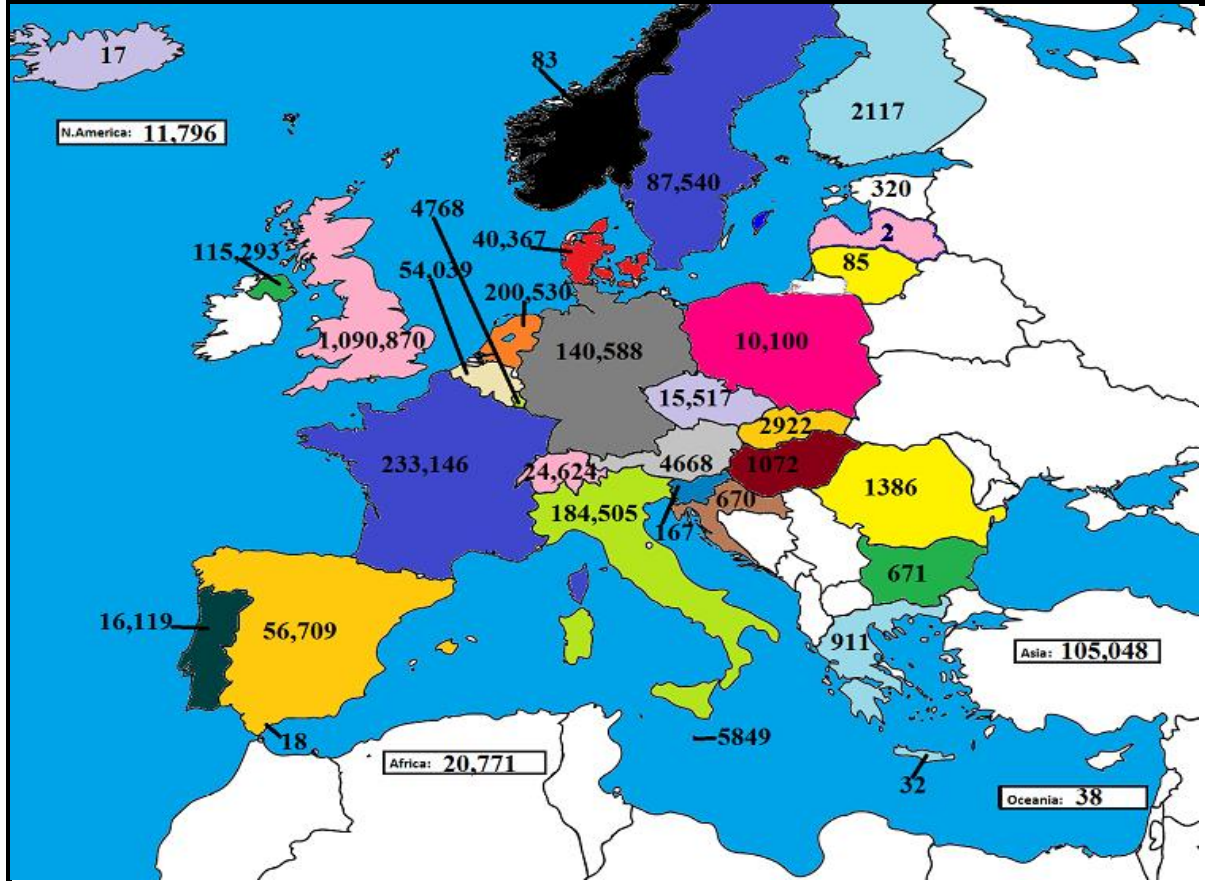




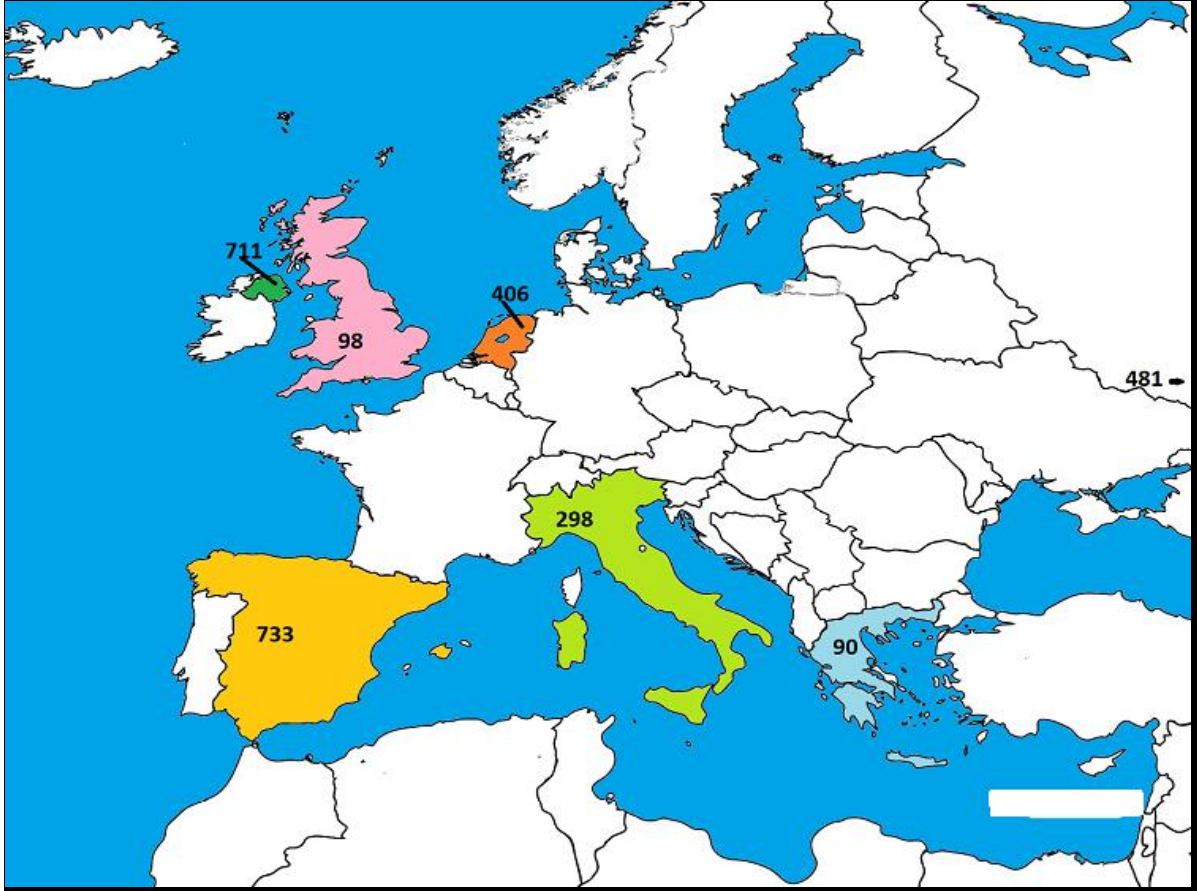
September 2019 Beef exports, €000 (CSO figures)



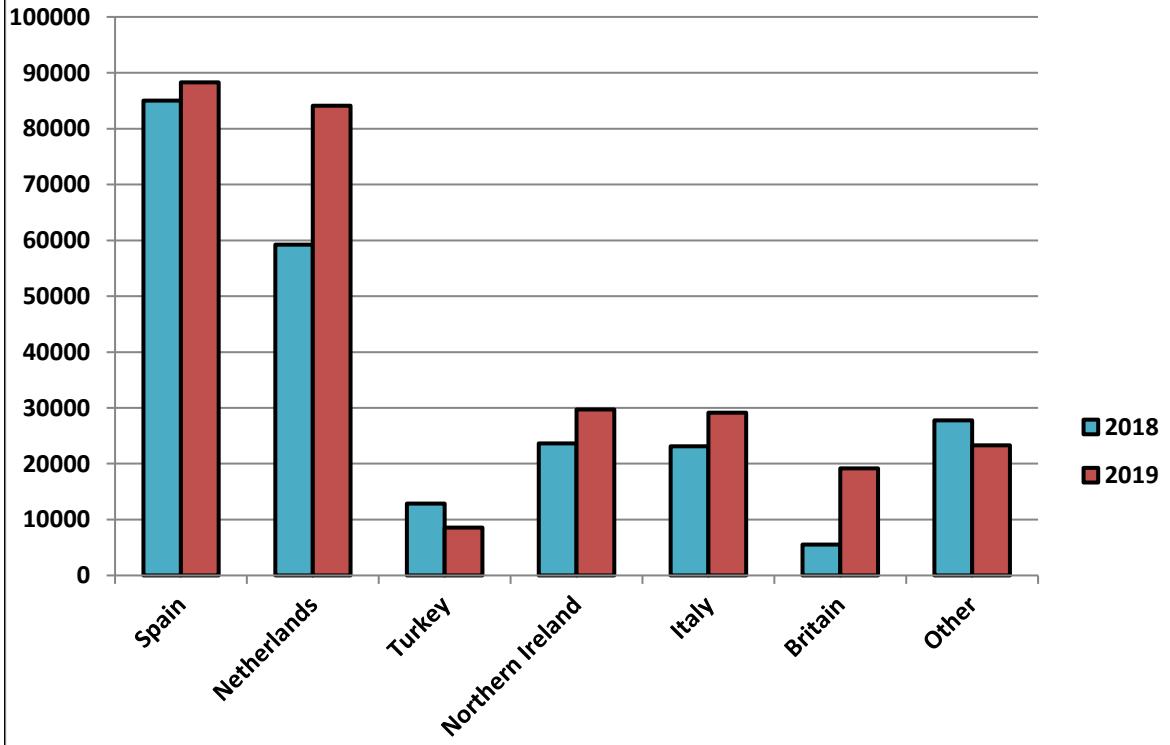
Cumulative beef exports to Dec 2018, €000 (CSO figures)



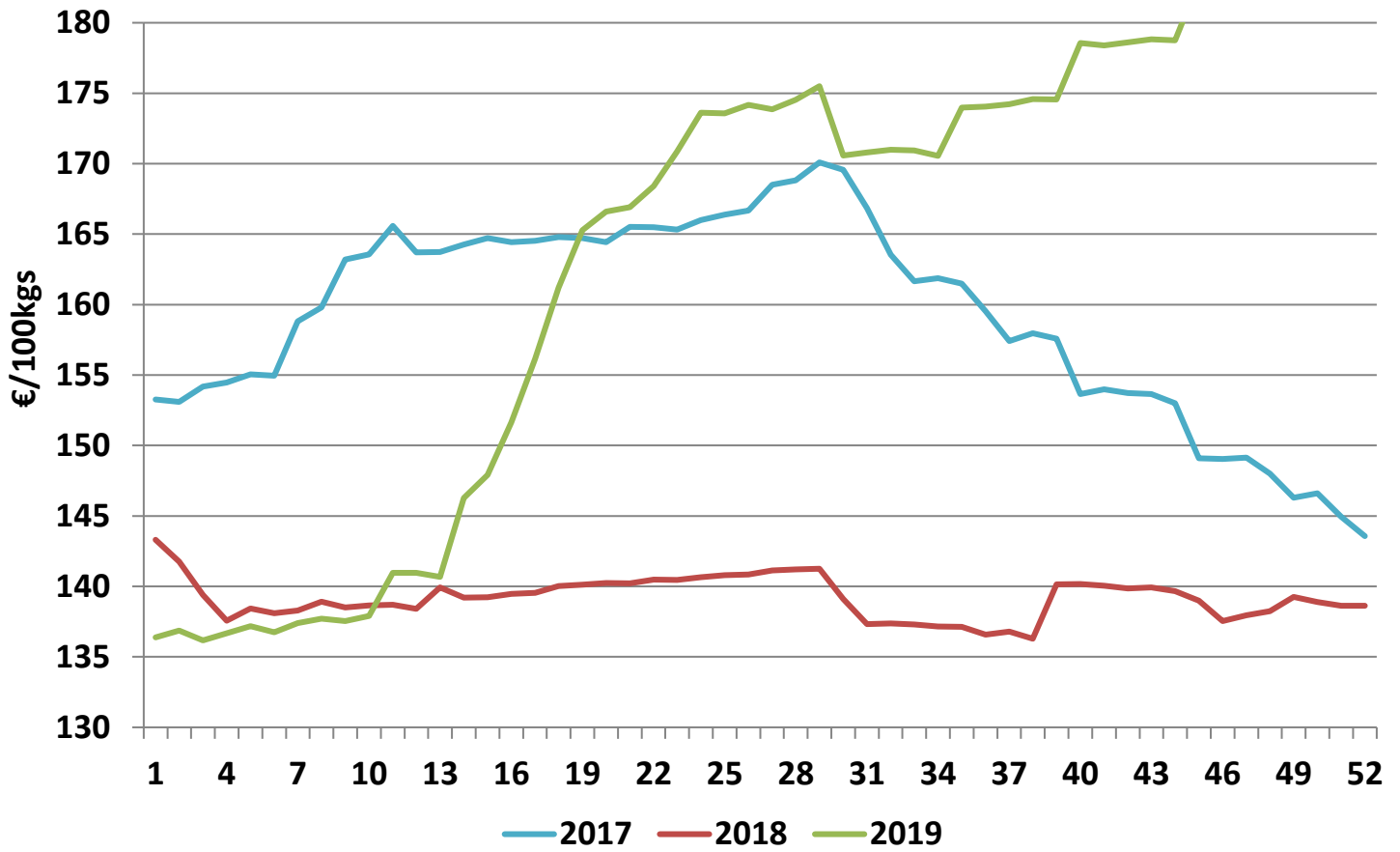
Cattle exported, w/c 18/11/19



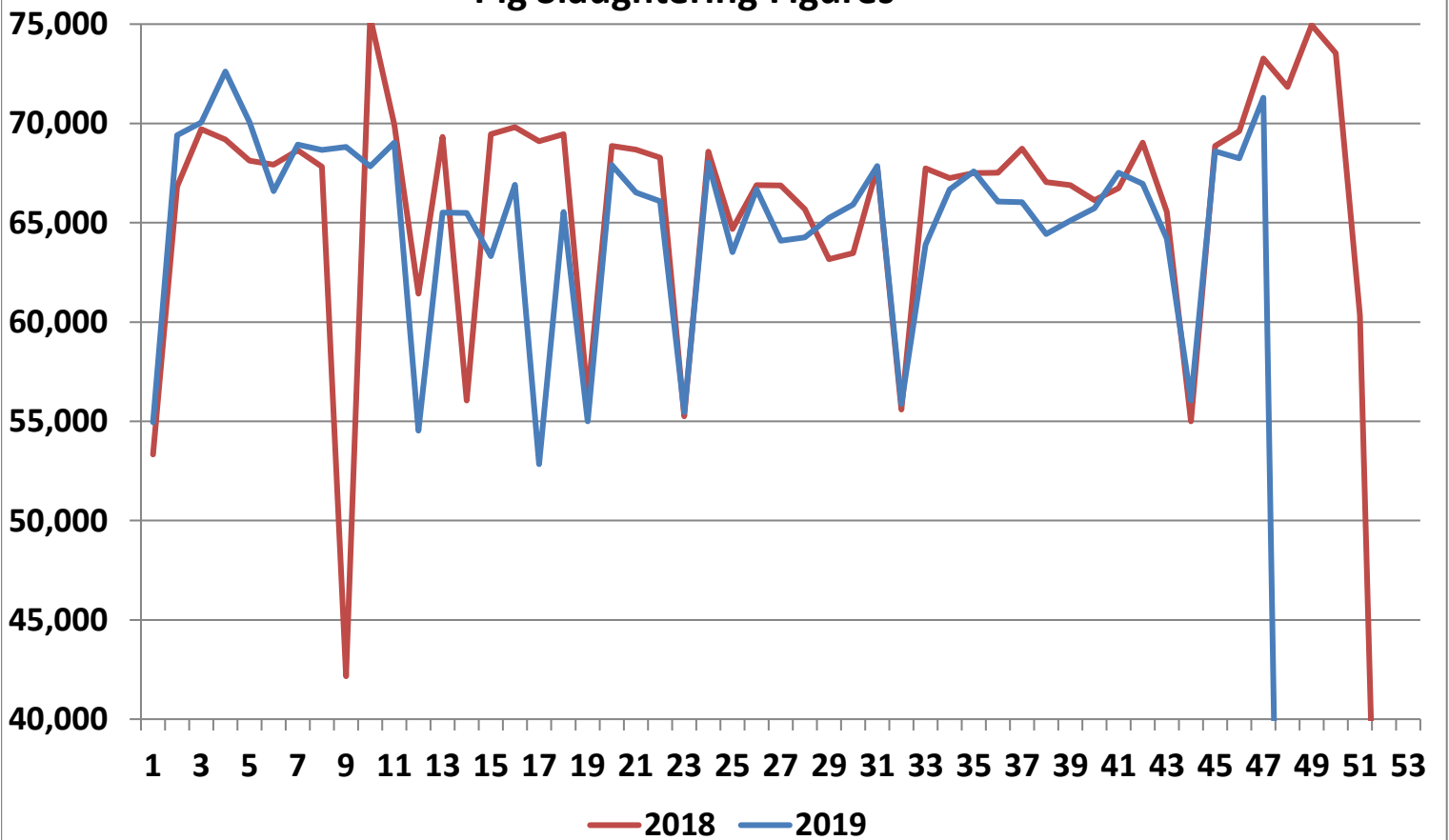
Cumulative cattle export figures, 2019



### Average Grade E Pig Price



### Pig Slaughtering Figures



**Sheepmeat Information for Week 47**

NOTE: EU PRICES  
ARE PROVISIONAL AT  
THE TIME OF  
PUBLICATION AND  
MAY NOT BE  
REFLECTIVE OF THE  
CURRENT PERIOD

Irish Prices €/100 kg	2019	2018	Change
Ave Factory Price	458.04	449.50	1.9%
Ave Mart Price	380.08	396.82	-4.2%
National Ave Price	434.65	433.7	0.2%
YTD Ave	460.87	485.40	-5.1%

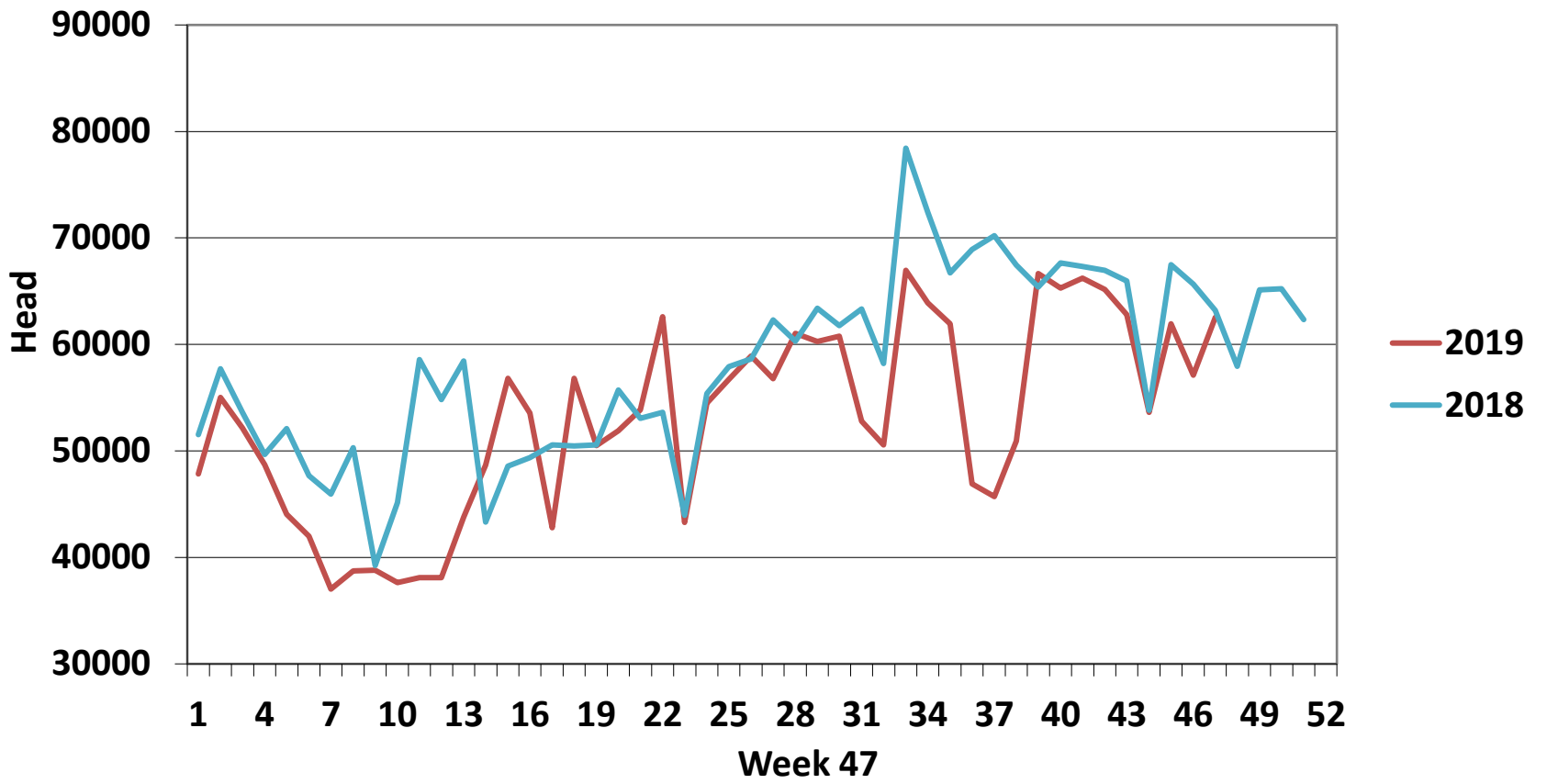
EU Market Rates Heavy Lambs	€/100kg
Belgium	460.7
Denmark	512.7
Germany	532.2
Spain	576.3
France	637.0
Croatia	492.8
Ireland	434.7
Italy	583.0
Cyprus	607.0
Latvia	304.0
Lithuania	316.1
Netherlands	477.2
Austria	553.0
Poland	435.9
Romania	198.7
Finland	401.0
Sweden	394.6
Northern Ireland	423.0
Great Britain	474.8
United Kingdom	471.1
Community	498.9

Slaughterings	2019	2018	Change
Weekly	62,520	63,205	-1%
YTD	2,492,628	2,712,775	-8%

**REPORT ON SLAUGHTERING AT SHEEP EXPORT PREMISES  
WEEK 47**

CATEGORY	2019		2018		DIFFERENCE	
	Weekly	Cumulative	Weekly	Cumulative	Weekly	Cumulative
Lambs/Hoggets	76	738,752	70	829,545	6	90,793
Spring Lambs	53,385	1,383,256	51,831	1,421,477	1,554	38,221
Ewes and Rams	9,059	370,049	11,300	461,578	-2,241	91,529
Light Lambs		571	4	175	-4	396
<b>TOTAL</b>	<b>62,520</b>	<b>2,492,628</b>	<b>63,205</b>	<b>2,712,775</b>	<b>-685</b>	<b>-220,147</b>

### Weekly Sheep Slaughtering



### Ave. Price €/100 kg for Sheepmeat

