

Meat Market Report

02/12/19 - 08/12/19

Week

49



**An Roinn Talmhaíochta,
Bia agus Mara**

Department of Agriculture,
Food and the Marine

MARKET SUMMARY

Beef

Deadweight Prices c/100Kg (Including VAT)

	U3	U4	R3	R4	O3	O4	P+3
Steers	369.0	363.0	360.0	358.0	341.0	340.0	314.0
Heifers	382.0	379.0	369.0	367.0	353.0	351.0	309.0
Young Bulls	350.0	352.0	339.0	339.0	322.0	324.0	302.0
Cows			297.0	296.0	274.0	274.0	258.0

Liveweight Prices

*Bull Calf Average Price	€145.9 per head (Excluding VAT)
**Young Store Average Price	€211.0 per 100kg (Excluding VAT)
***Yearling (male & female) Price	€175.0 per 100kg (Excluding VAT)

* Aged 8-28 days ** Aged 180-364 days, Male & Female ***age 365-730 days

Slaughterings

39,872 cattle slaughtered this week, of which steers were 14,863 (37%), heifers 11,419 (29%), young bulls 4,617 (12%) and cows 8,381 (21%). Total YTD slaughter is 1,640,728 compared to 1,704,800 in 2018, a 4% decrease.

Live Trade

2,406 cattle were exported in the week commencing 25/11/2019, 1,457 to EU (Except NI). Live exports for 2019 amount to 286,968 compared to 238,514 in 2018, up 20% on 2018 levels.

*This data is provisional and subject to revision.

The next meeting of the Management Committee for the Common Organisation of Agricultural Markets (Animal Products Sector) is 12th December 2019

CONTENTS:

Page 2: Market Summary Beef
 Page 3: Market Summary Other Meats
 Page 4: Beef Price and Slaughter Summary
 Page 5: Comparative Beef Prices
 Page 6: Steer and Young Bull Price
 Page 7: Heifer and Cow Graphs
 Page 8: Price and Slaughter Graphs
 Page 9: Liveweight Beef Graphs

Page 10: Beef Export Maps
 Page 11: Beef Export Info
 Page 12: Pig price and slaughter graphs
 Page 13: Sheep prices and slaughter
 Page 15: Sheep price and slaughter graphs

MARKET SUMMARY

Pigmeat

Grade E Pig
Prices (Ex.
VAT)

The Grade E Pig price for week commencing 02/12/2019 was €189.31 per 100Kg compared to €139.25 in the same week last year, which represents a 36% increase.

Slaughtering

73,196 pigs were slaughtered in week 49 of which 2,049 were sows. The cumulative figure for pig slaughterings in 2019 is 3,206,291 which is a 1% decrease with the same point last year.

Sheepmeat

Sheepmeat
Prices (Ex.
VAT)

The national average price for the week commencing 02/12/2019 was €448.09 per 100Kg, an decrease of .8% over the same week last year.

Slaughtering

64,994 sheep were slaughtered at sheep export premises the week commencing 02/12/2019, compared to 65,125 in the same week of 2018. Sheep slaughterings for 2019 are 8% down on 2018 at 2,622,304 head.

Live Trade

Total live exports to European Countries stood at 6,227 head to the end of August 2019.

Poultry

Slaughtering

Cumulative poultry slaughterings for 2019* stand at 100,355,748 birds at the end of week 49, up 8% compared to the same period last year.

*Latest Figures are provisional and subject to change

Dead Weight Prices	W/C	W/C	Same week 2018	% change prev week	% change 2018
	02/12/19	25/11/19			
Steers (R3) (c/kg)	341.5	341.6	365.9	0.0%	-6.7%
Heifers (R3) (c/kg)	350.4	350.6	377.8	-0.1%	-7.3%
Young Bulls (U3) (c/kg)	332.1	333.0	368.3	-0.3%	-9.8%
Cows (04) (c/kg)	259.7	257.8	269.9	0.7%	-3.8%

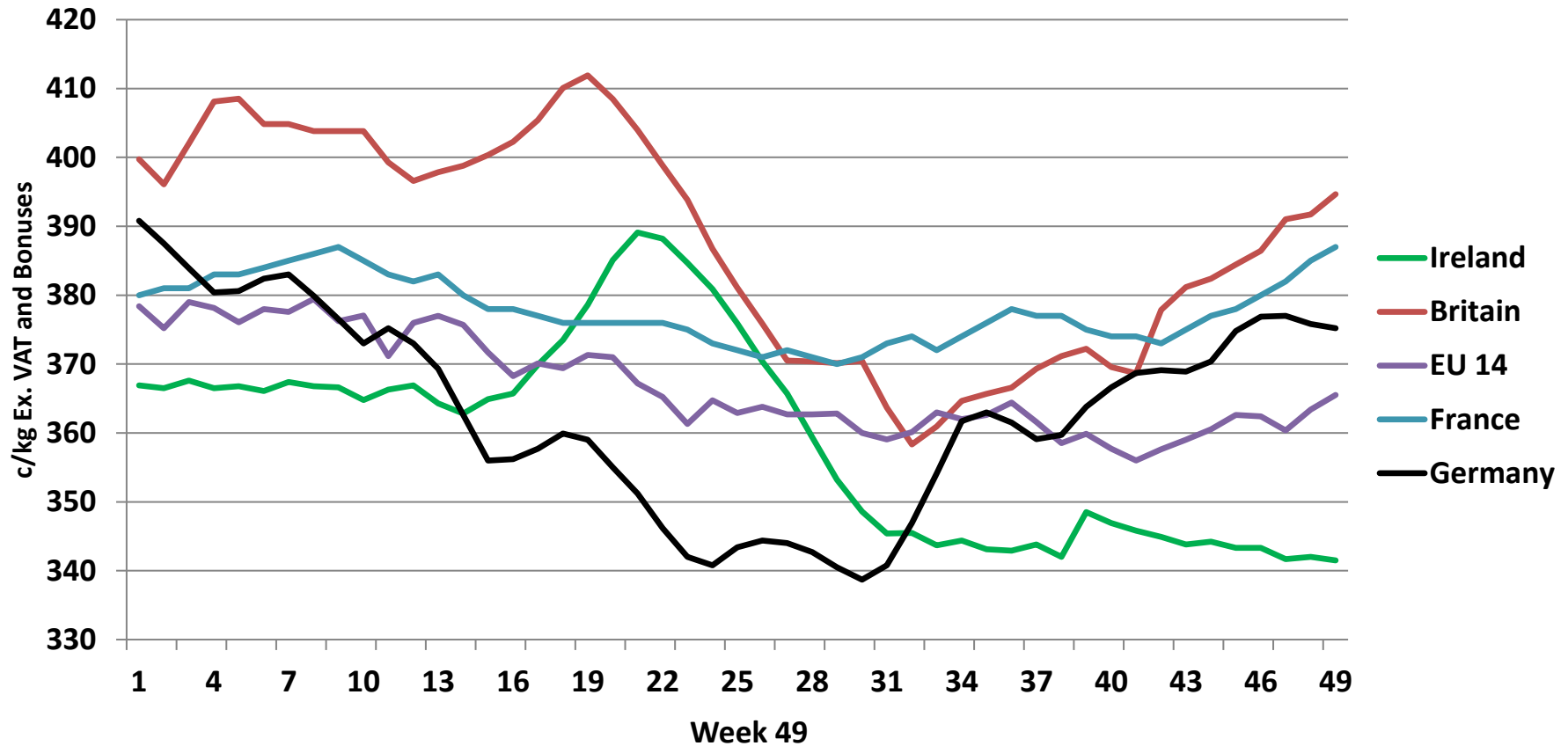
Live Weight Prices	W/C	W/C	Same week 2018	% change previous week	% change 2018
	02/12/19	25/11/19			
Yearlings (Male) (Aged 365 - 730 days) - (€/100Kg)	173	172	177	0.6%	-2.3%
Yearlings (Female) (Aged 365 - 730 days) - (€/100Kg)	177	177	182	0.0%	-2.7%
Young Stores (Male & Female) (Aged 180 - 364 days) - (€/100Kg)	211	199	202	6.0%	4.5%
Bull Calf (€/head) Dairy	85.9	91.8	117.3	-6.4%	-26.8%
Bull Calf (€/head) Beef	205.9	161.0	215.1	27.8%	-4.3%

Slaughter Figures	% of weekly figures	W/C	Same week 2018	Year to Date		Change 2019 v 2018	
		02-Dec-19		2019	2018	Head	%
Steers	37.3%	14,863	12,240	599,391	642,974	-43,583	-6.8%
Cows	21.0%	8,381	8,754	331,309	379,316	-48,007	-12.7%
Heifers	28.6%	11,419	11,960	479,095	461,226	17,869	3.9%
Young Bulls	11.6%	4,617	4,708	197,571	191,584	5,987	3.1%
Mature Bulls	1.5%	592	492	33,362	29,700	3,662	12.3%
Total	100%	39,872	38,154	1,640,728	1,704,800	-64,072	-3.8%

821

Live Exports	W/C	Same week 2018	W/C	Year to Date		Change 2019 v 2018	
	25-Nov-19		11-Nov-19	2019	2018	Head	%
Northern Ireland	919	628	711	30,832	22,455	8,377	37%
EU Except NI	1,457	1,803	1,625	236,498	197,155	39,343	20%
Third Countries	30	0	481	19,638	18,904	734	-
Total	2,406	2,431	2,817	286,968	238,514	48,454	20%
Calves YTD:	198,592			Adult YTD:Cattle		88,236	

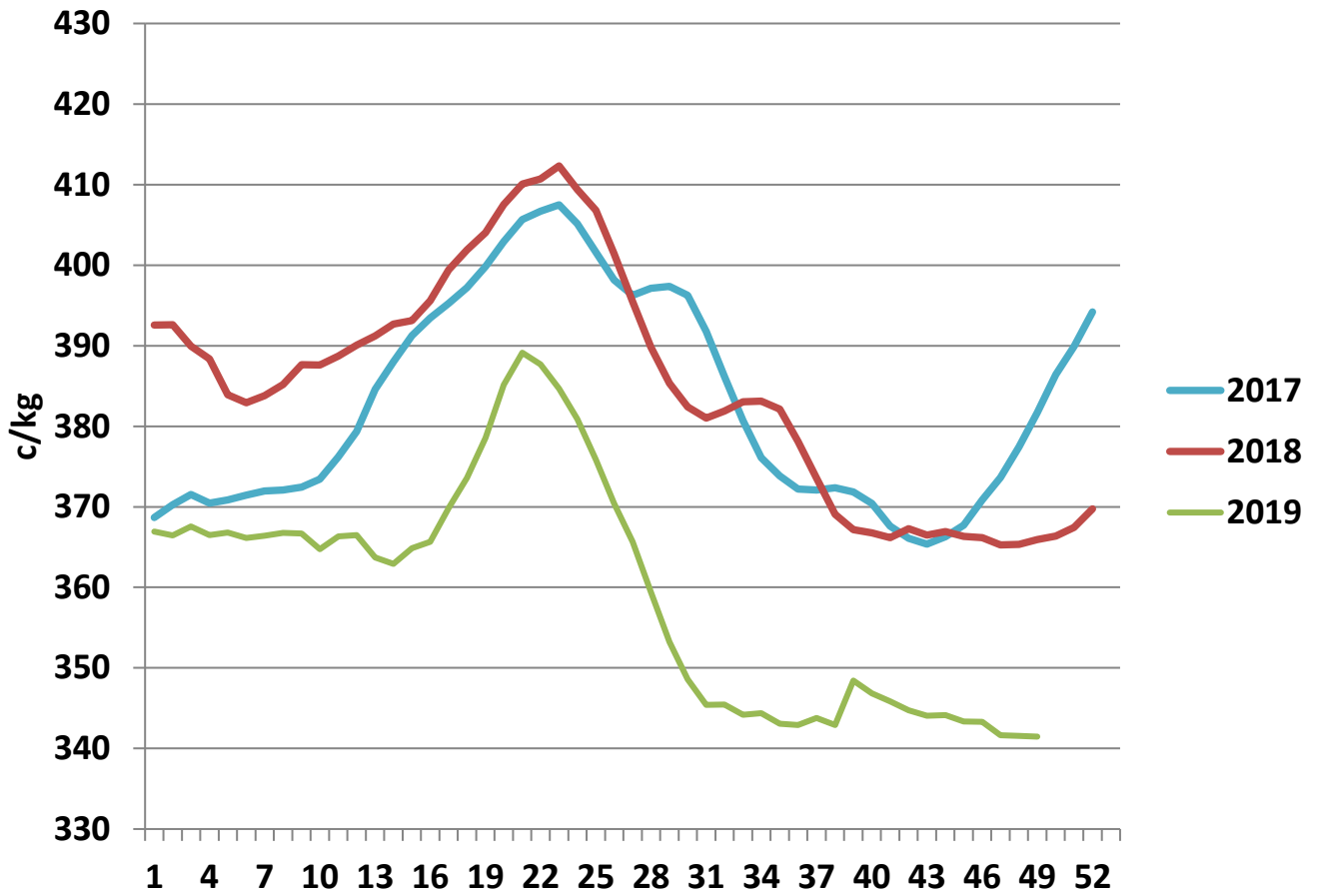
Irish Deadweight Cattle Prices vs Selected Other Markets, 2019



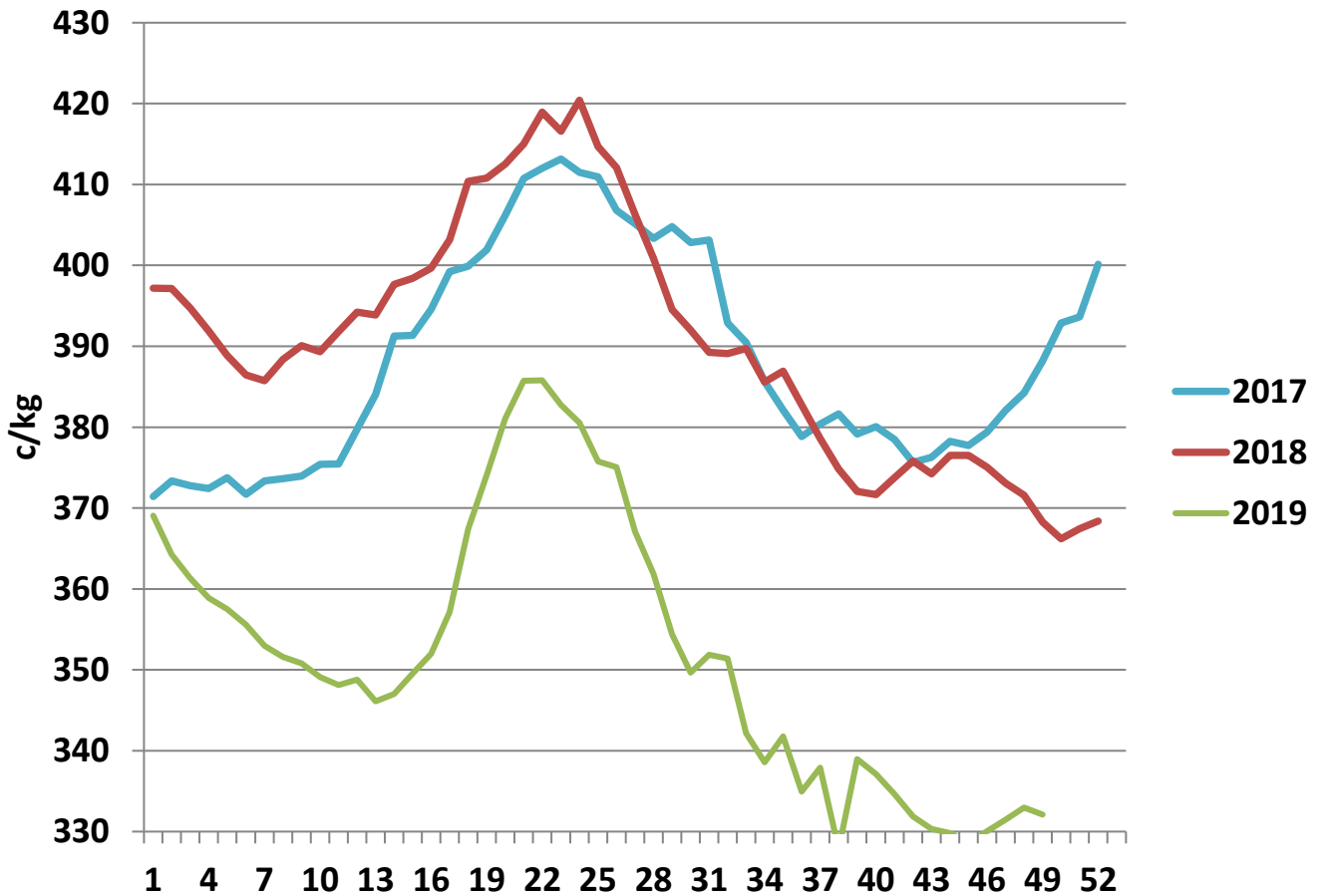
Livestock Pricing

	Ireland	NI	Britain	EU 14 Average	France	Germany
02/12/2019	341	396	395	365	387	375

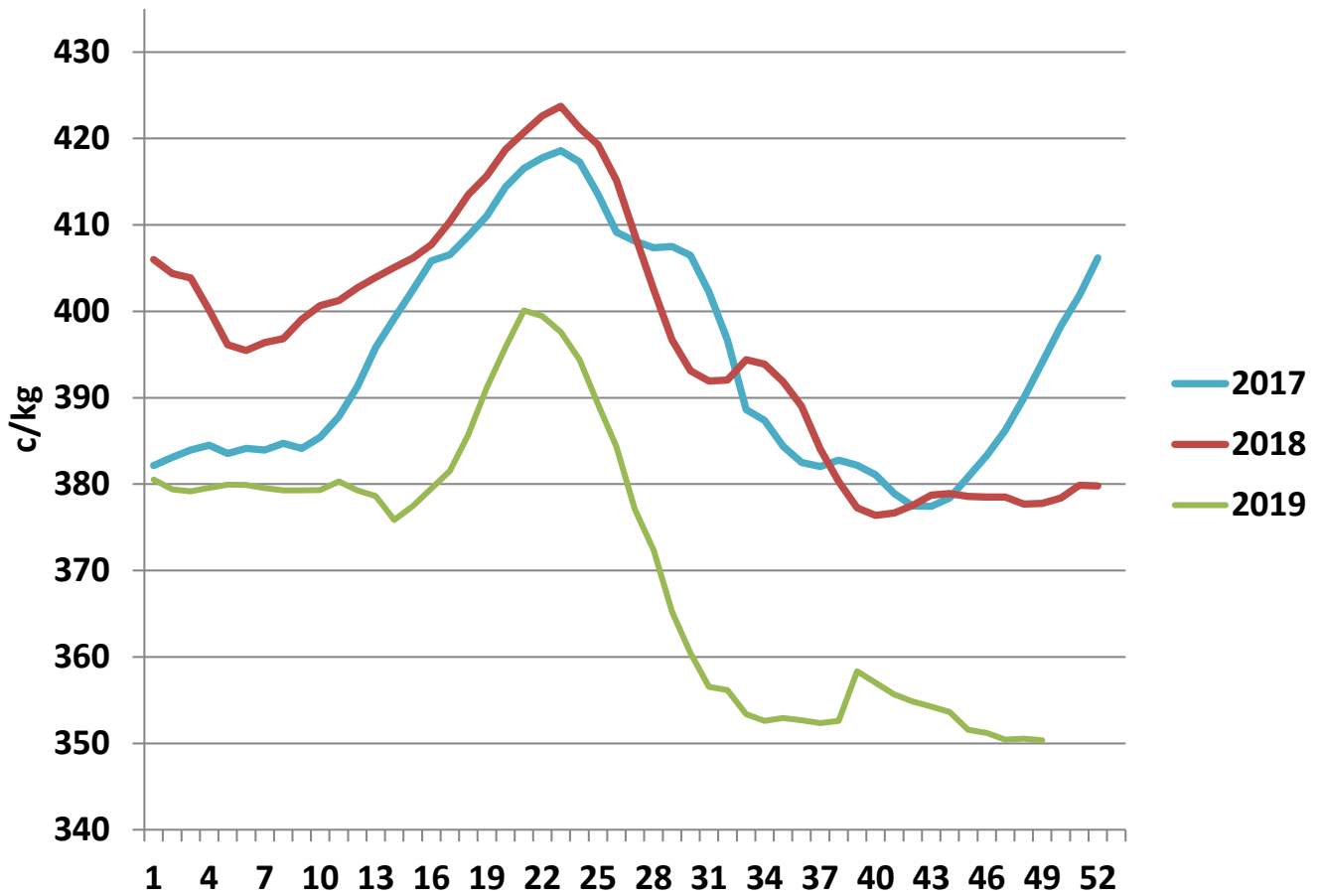
R3 Steer prices ex. VAT



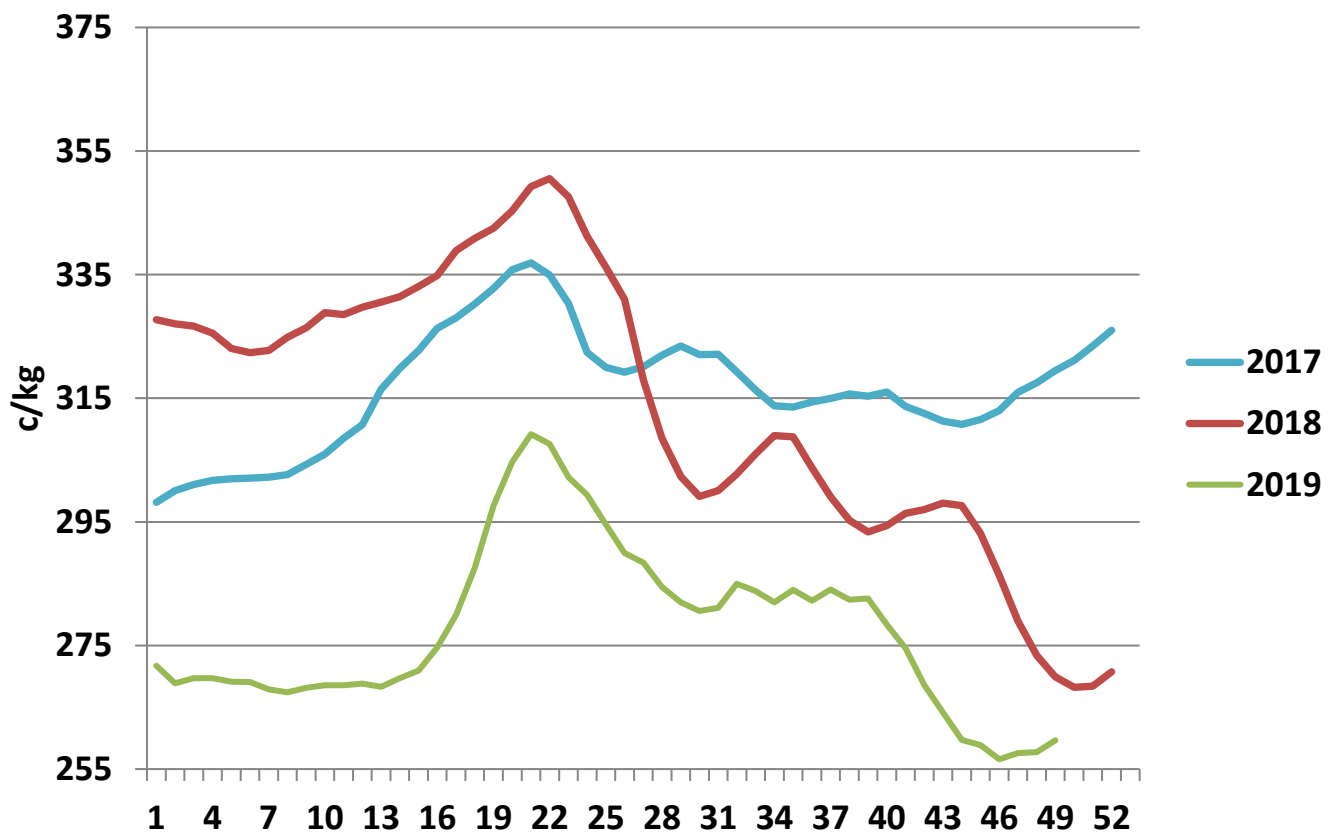
U3 Young Bull prices ex. VAT



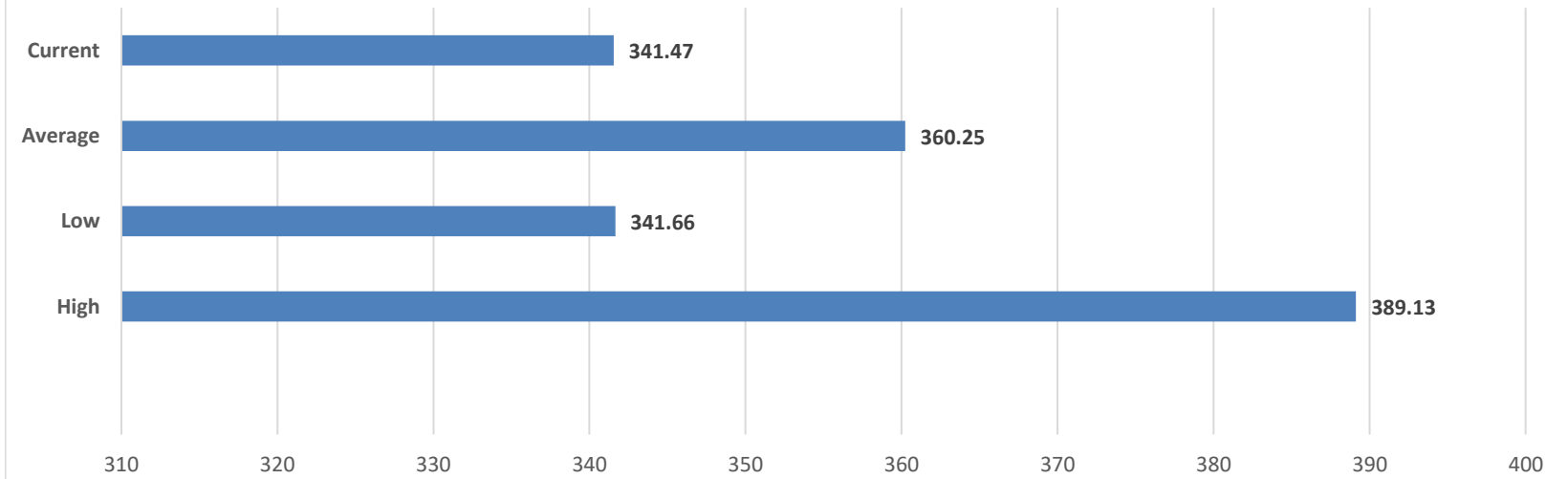
R3 Heifer prices ex. VAT



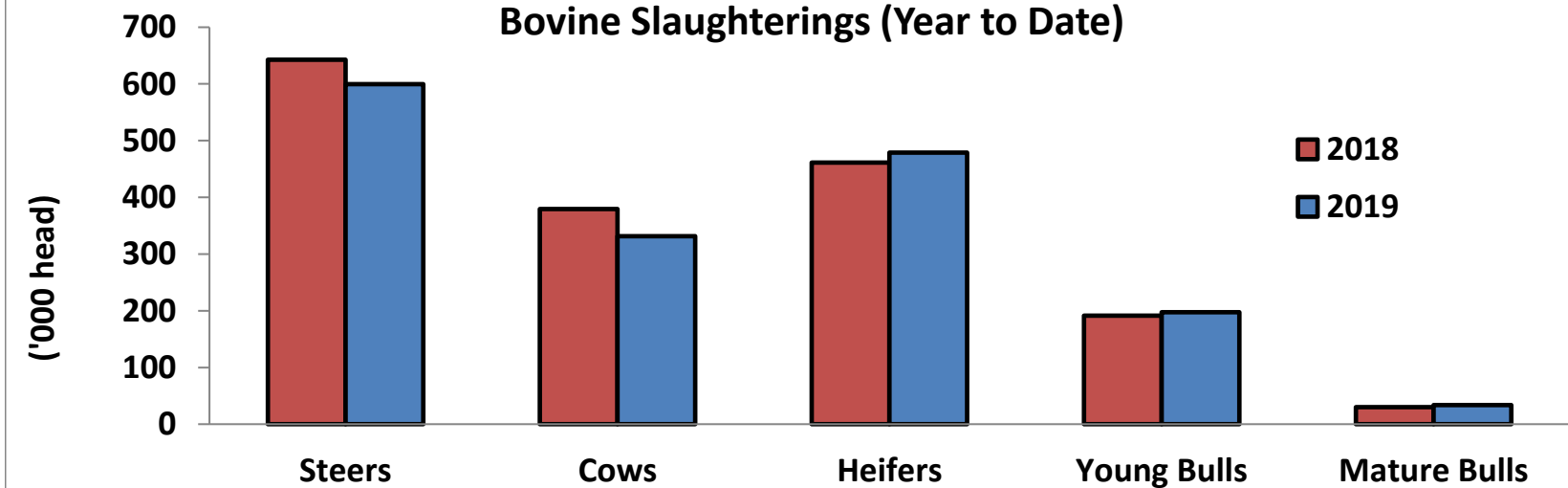
O4 Cow prices ex. VAT



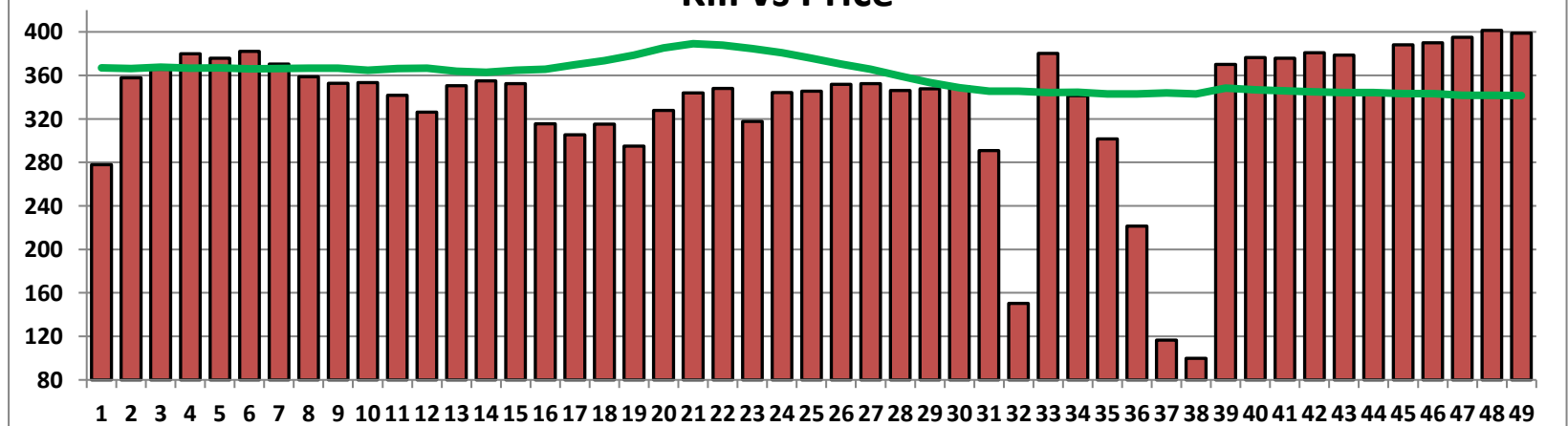
6 Month R3 Steer Statistics



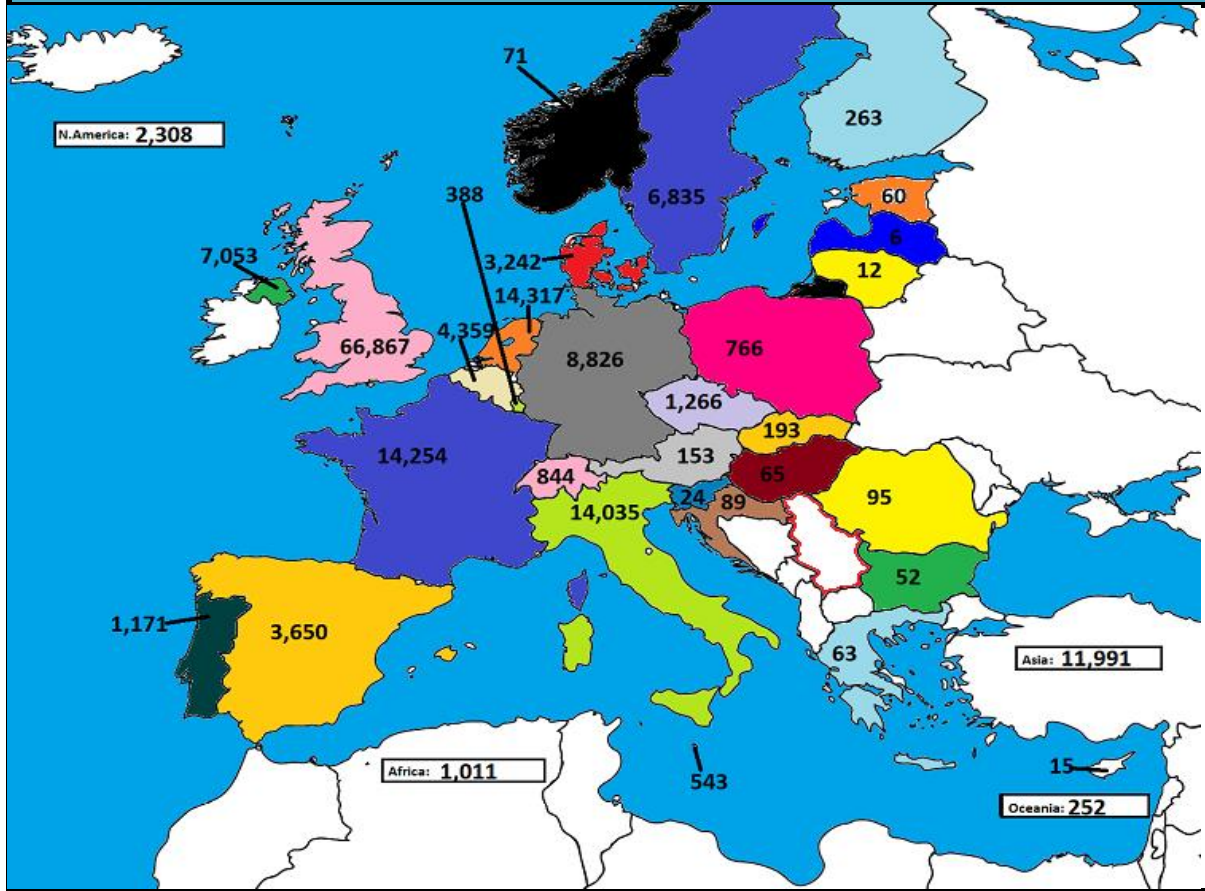
Bovine Slaughtering (Year to Date)



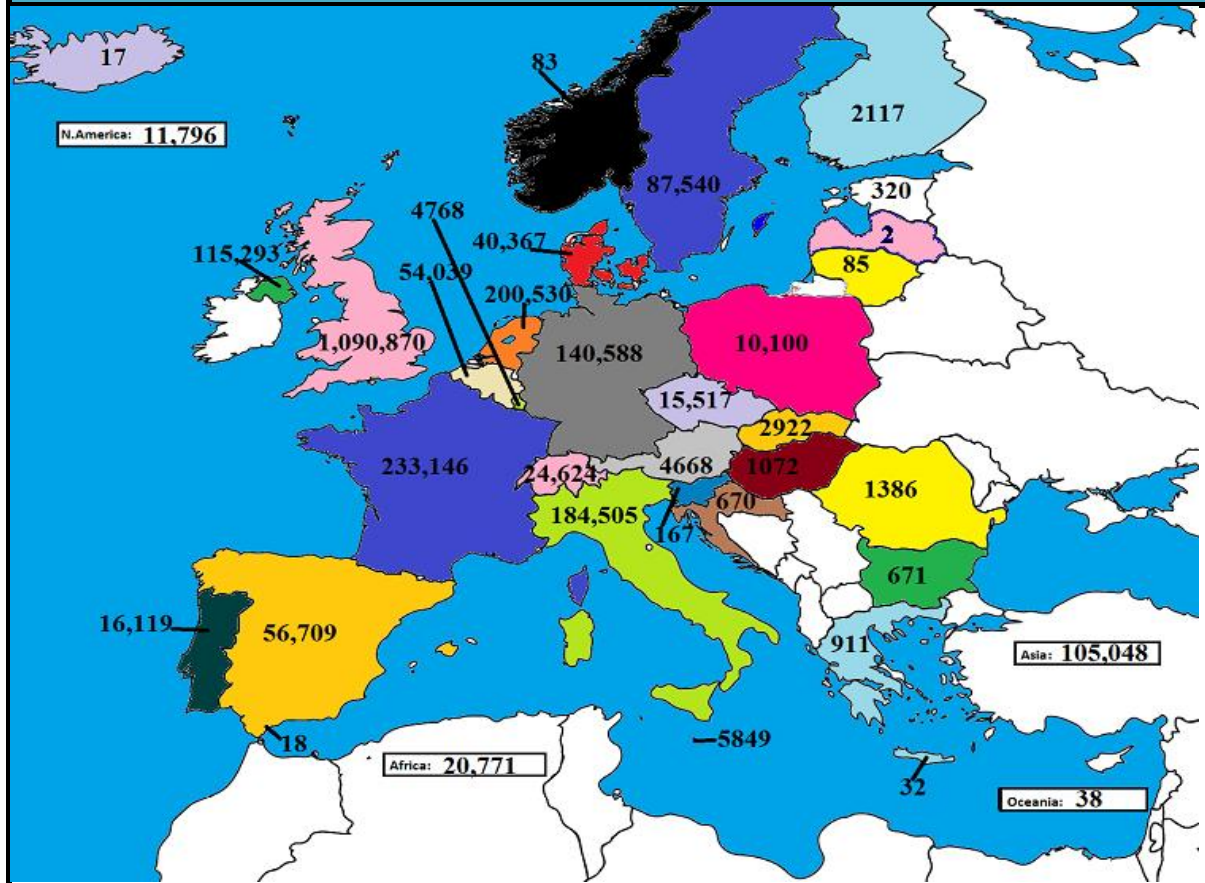
Kill vs Price



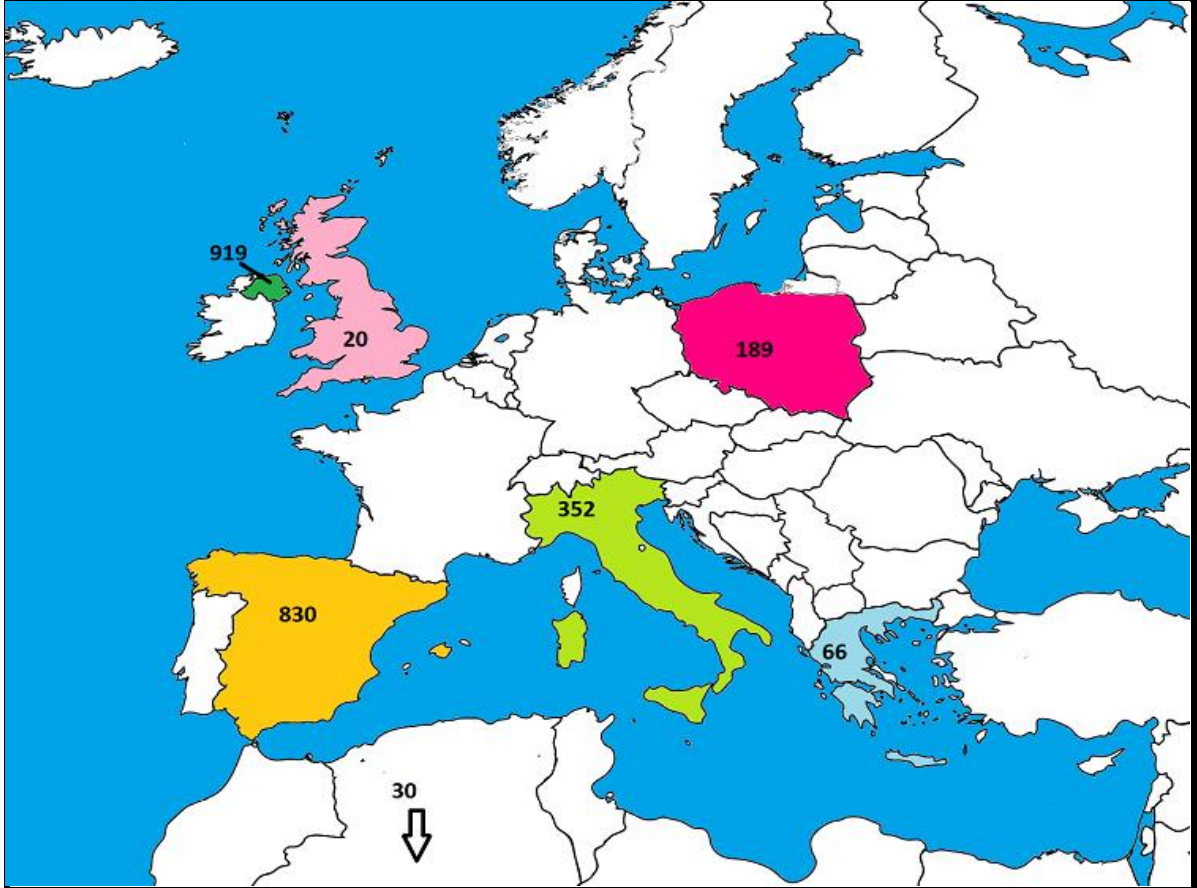
September 2019 Beef exports, €000 (CSO figures)



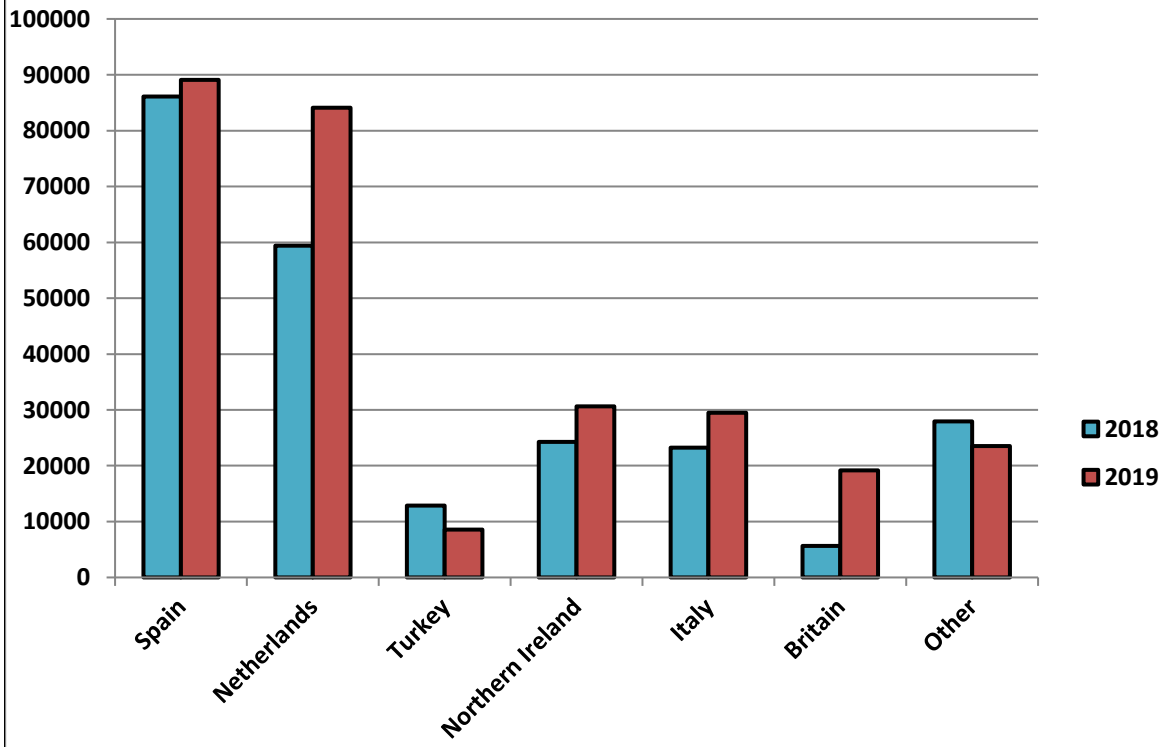
Cumulative beef exports to Dec 2018, €000 (CSO figures)



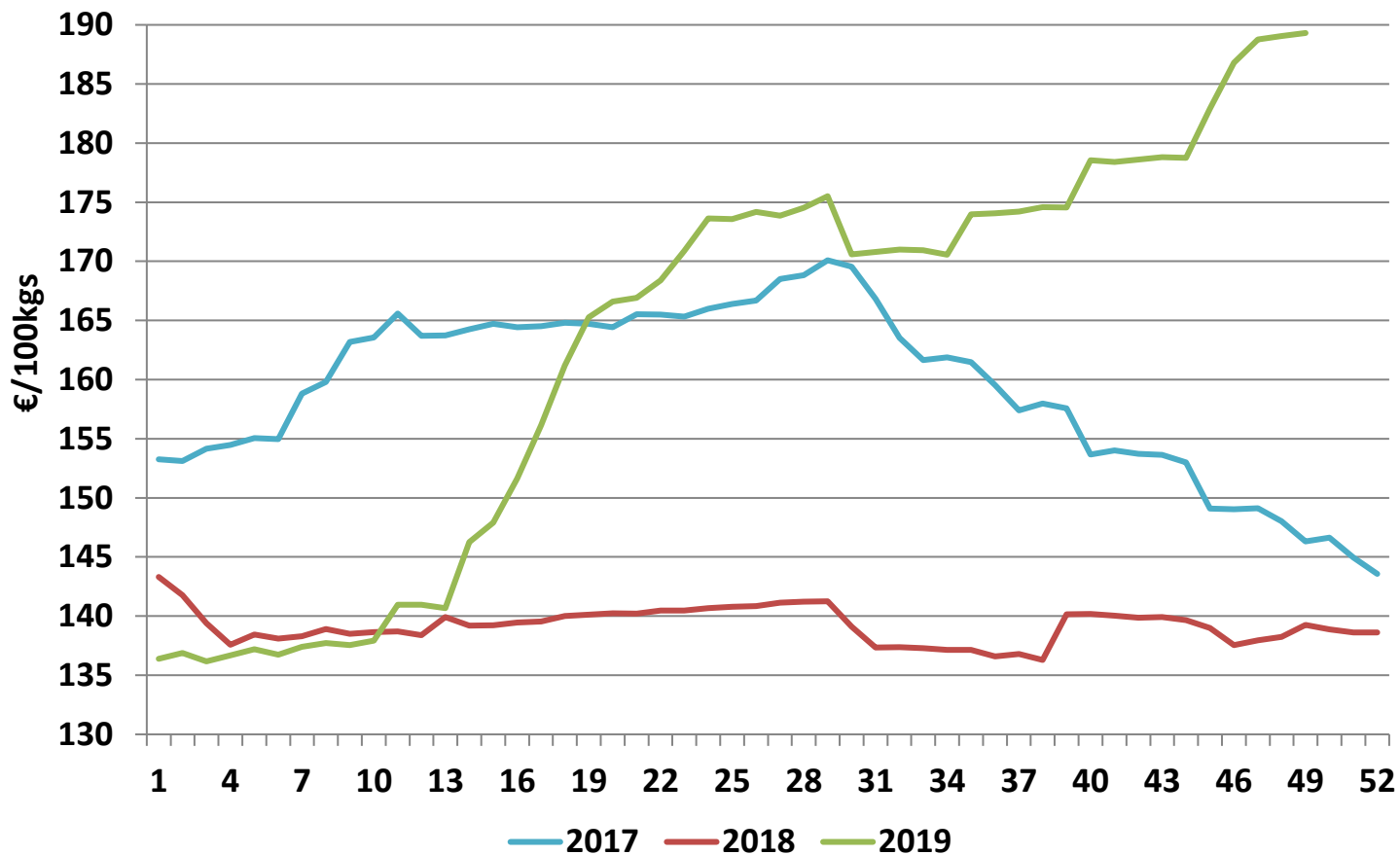
Cattle exported, w/c 25/11/19



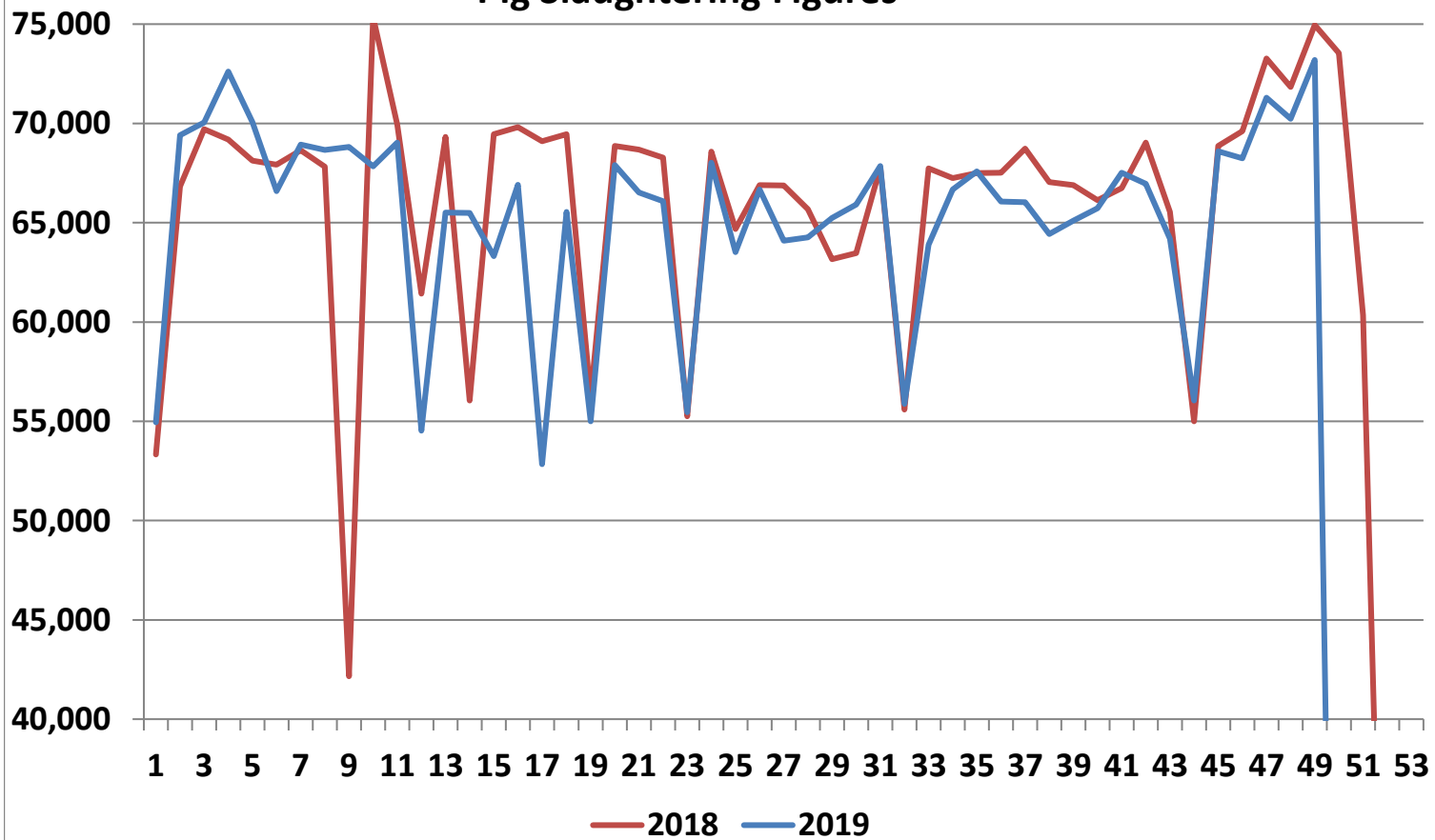
Cumulative cattle export figures, 2019



Average Grade E Pig Price



Pig Slaughtering Figures



Sheepmeat Information for Week 49

NOTE: EU PRICES
ARE PROVISIONAL AT
THE TIME OF
PUBLICATION AND
MAY NOT BE
REFLECTIVE OF THE
CURRENT PERIOD

Irish Prices €/100 kg	2019	2018	Change
Ave Factory Price	469.93	471.04	-0.2%
Ave Mart Price	397.14	407.04	-2.4%
National Ave Price	448.09	451.84	-0.8%
YTD Ave	460.33	483.82	-4.9%

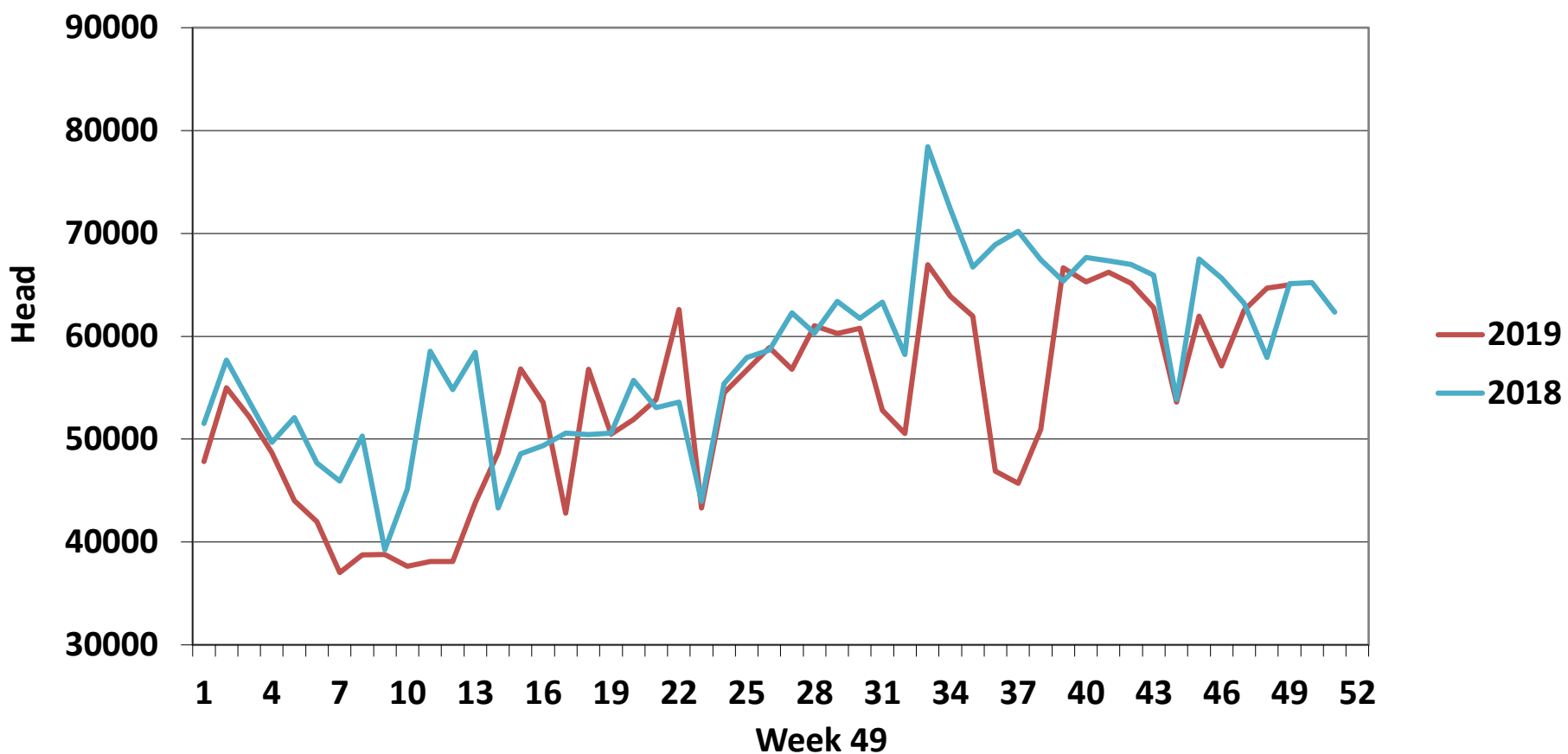
EU Market Rates Heavy Lambs	€/100kg
Belgium	464.8
Denmark	512.7
Germany	513.9
Spain	614.9
France	647.0
Croatia	543.0
Ireland	448.1
Italy	578.0
Cyprus	623.0
Latvia	326.4
Lithuania	377.0
Netherlands	474.4
Austria	570.0
Poland	435.9
Romania	204.0
Finland	387.0
Sweden	406.9
Northern Ireland	440.9
Great Britain	504.0
United Kingdom	499.5
Community	522.0

Slaughterings	2019	2018	Change
Weekly	64,994	65,125	0%
YTD	2,622,304	2,835,848	-8%

**REPORT ON SLAUGHTERING AT SHEEP EXPORT PREMISES
WEEK 49**

CATEGORY	2019		2018		DIFFERENCE	
	Weekly	Cumulative	Weekly	Cumulative	Weekly	Cumulative
Lambs/Hoggets	66	738,908	58	829,696	8	-90,788
Spring Lambs	55,794	1,494,650	54,510	1,523,281	1,284	-28,631
Ewes and Rams	9,129	388,170	10,557	482,695	-1,428	-94,525
Light Lambs	5	576		176	5	400
TOTAL	64,994	2,622,304	65,125	2,835,848	-131	-213,544

Weekly Sheep Slaughterings



Ave. Price €/100 kg for Sheepmeat

