

Meat Market Report

09/12/19 - 15/12/19

Week
50



**An Roinn Talmhaíochta,
Bia agus Mara**
Department of Agriculture,
Food and the Marine



MARKET SUMMARY

Beef

Deadweight Prices c/100Kg (Including VAT)

| | U3 | U4 | R3 | R4 | O3 | O4 | P+3 |
|-------------|-------|-------|-------|-------|-------|-------|-------|
| Steers | 377.0 | 371.0 | 367.0 | 364.0 | 347.0 | 346.0 | 320.0 |
| Heifers | 388.0 | 383.0 | 377.0 | 375.0 | 360.0 | 358.0 | 314.0 |
| Young Bulls | 353.0 | 352.0 | 342.0 | 343.0 | 325.0 | 330.0 | 307.0 |
| Cows | | | 299.0 | 298.0 | 276.0 | 275.0 | 260.0 |

Liveweight Prices

| | |
|-----------------------------------|----------------------------------|
| *Bull Calf Average Price | €185.3 per head (Excluding VAT) |
| **Young Store Average Price | €207.0 per 100kg (Excluding VAT) |
| ***Yearling (male & female) Price | €180.5 per 100kg (Excluding VAT) |

* Aged 8-28 days ** Aged 180-364 days, Male & Female ***age 365-730 days

Slaughterings

38,145 cattle slaughtered this week, of which steers were 13,531 (36%), heifers 10,788 (28%), young bulls 4,980 (13%) and cows 8,300 (22%). Total YTD slaughter is 1,678,842 compared to 1,743,313 in 2018, a 4% decrease.

Live Trade

5,223 cattle were exported in the week commencing 02/12/2019, 1,803 to EU (Except NI). Live exports for 2019 amount to 292,191 compared to 240,269 in 2018, up 22% on 2018 levels.

*This data is provisional and subject to revision.

The next meeting of the Management Committee for the Common Organisation of Agricultural Markets (Animal Products Sector) is 12th December 2019

CONTENTS:

Page 2: Market Summary Beef
 Page 3: Market Summary Other Meats
 Page 4: Beef Price and Slaughter Summary
 Page 5: Comparative Beef Prices
 Page 6: Steer and Young Bull Price
 Page 7: Heifer and Cow Graphs
 Page 8: Price and Slaughter Graphs
 Page 9: Liveweight Beef Graphs

Page 10: Beef Export Maps
 Page 11: Beef Export Info
 Page 12: Pig price and slaughter graphs
 Page 13: Sheep prices and slaughter
 Page 15: Sheep price and slaughter graphs

MARKET SUMMARY

Pigmeat

Grade E Pig
Prices (Ex.
VAT)

The Grade E Pig price for week commencing 09/12/2019 was €189.69 per 100Kg compared to €138.89 in the same week last year, which represents a 37% increase.

Slaughtering

75,779 pigs were slaughtered in week 50 of which 2,357 were sows. The cumulative figure for pig slaughterings in 2019 is 3,282,070 which is a 1% decrease with the same point last year.

Sheepmeat

Sheepmeat
Prices (Ex.
VAT)

The national average price for the week commencing 09/12/2019 was €451.62 per 100Kg, an increase of 1% over the same week last year.

Slaughtering

66,286 sheep were slaughtered at sheep export premises the week commencing 09/12/2019, compared to 65,212 in the same week of 2018. Sheep slaughterings for 2019 are 7% down on 2018 at 2,688,590 head.

Live Trade

Total live exports to European Countries stood at 7,160 head to the end of August 2019.

Poultry

Slaughtering

Cumulative poultry slaughterings for 2019* stand at 102,576,284 birds at the end of week 50, up 8% compared to the same period last year.

*Latest Figures are provisional and subject to change

| Dead Weight Prices | W/C | W/C | Same week 2018 | % change prev week | % change 2018 |
|-------------------------|----------|----------|----------------|--------------------|---------------|
| | 09/12/19 | 02/12/19 | | | |
| Steers (R3) (c/kg) | 348.3 | 341.5 | 366.4 | 2.0% | -4.9% |
| Heifers (R3) (c/kg) | 357.6 | 350.4 | 378.4 | 2.1% | -5.5% |
| Young Bulls (U3) (c/kg) | 335.0 | 332.1 | 366.2 | 0.9% | -8.5% |
| Cows (04) (c/kg) | 261.4 | 259.7 | 268.2 | 0.7% | -2.6% |

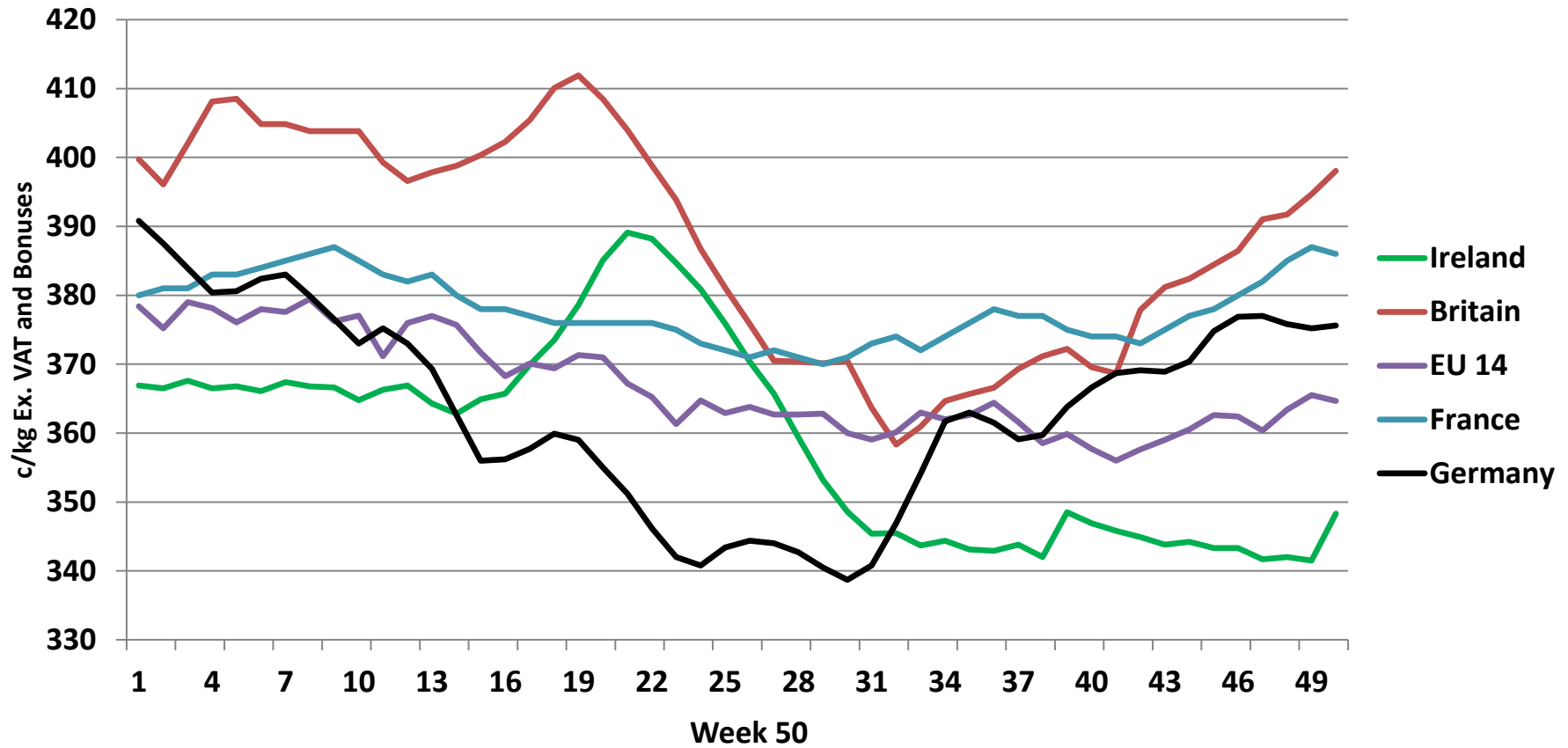
| Live Weight Prices | W/C | W/C | Same week 2018 | % change previous week | % change 2018 |
|--|----------|----------|----------------|------------------------|---------------|
| | 09/12/19 | 02/12/19 | | | |
| Yearlings (Male) (Aged 365 - 730 days) - (€/100Kg) | 178 | 173 | 176 | 2.9% | 1.1% |
| Yearlings (Female) (Aged 365 - 730 days) - (€/100Kg) | 183 | 177 | 181 | 3.4% | 1.1% |
| Young Stores (Male & Female) (Aged 180 - 364 days) - (€/100Kg) | 207 | 211 | 206 | -1.9% | 0.5% |
| Bull Calf (€/head) Dairy | 139.9 | 85.9 | 113.4 | 62.9% | 23.4% |
| Bull Calf (€/head) Beef | 230.8 | 205.9 | 202.0 | 12.1% | 14.2% |

| Slaughter Figures | % of weekly figures | W/C | Same week 2018 | Year to Date | | Change 2019 v 2018 | |
|-------------------|---------------------|---------------|----------------|------------------|------------------|--------------------|--------------|
| | | 09-Dec-19 | | 2019 | 2018 | Head | % |
| Steers | 35.5% | 13,531 | 11,237 | 613,400 | 655,247 | -41,847 | -6.4% |
| Cows | 21.8% | 8,300 | 8,732 | 339,112 | 388,048 | -48,936 | -12.6% |
| Heifers | 28.3% | 10,788 | 11,535 | 489,848 | 472,761 | 17,087 | 3.6% |
| Young Bulls | 13.1% | 4,980 | 5,748 | 202,573 | 197,025 | 5,548 | 2.8% |
| Mature Bulls | 1.4% | 546 | 570 | 33,909 | 30,232 | 3,677 | 12.2% |
| Total | 100% | 38,145 | 37,822 | 1,678,842 | 1,743,313 | -64,471 | -3.7% |

821

| Live Exports | W/C | Same week 2018 | W/C | Year to Date | | Change 2019 v 2018 | |
|--------------------|----------------|----------------|--------------|-------------------------|----------------|--------------------|------------|
| | 25-Nov-19 | | 11-Nov-19 | 2019 | 2018 | Head | % |
| Northern Ireland | 893 | 779 | 919 | 31,725 | 23,234 | 8,491 | 37% |
| EU Except NI | 1,803 | 947 | 1,457 | 238,301 | 198,102 | 40,199 | 20% |
| Third Countries | 2,527 | 29 | 30 | 22,165 | 18,933 | 3,232 | - |
| Total | 5,223 | 1,755 | 2,406 | 292,191 | 240,269 | 51,922 | 22% |
| Calves YTD: | 199,390 | | | Adult YTD:Cattle | | 92,660 | |

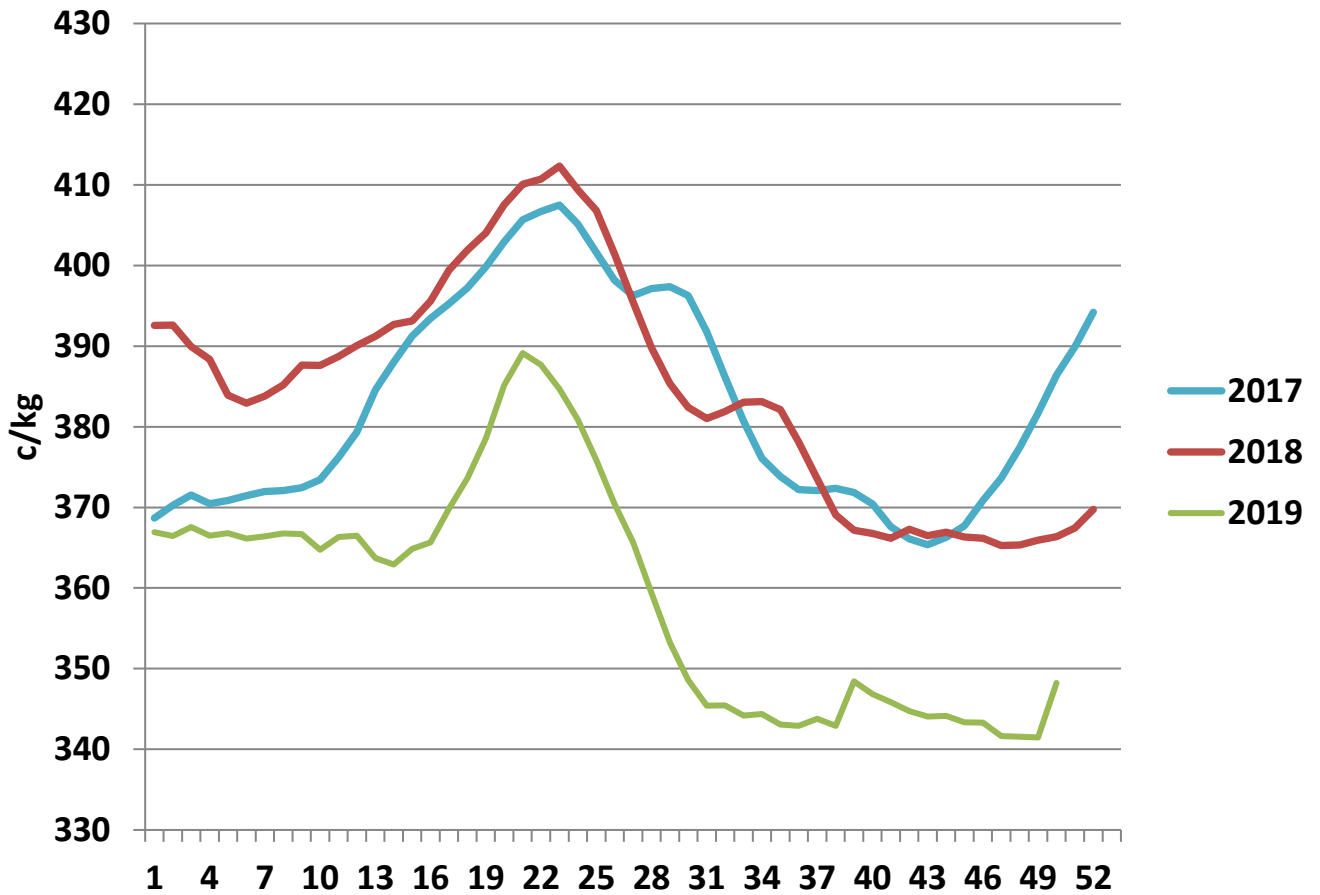
Irish Deadweight Cattle Prices vs Selected Other Markets, 2019



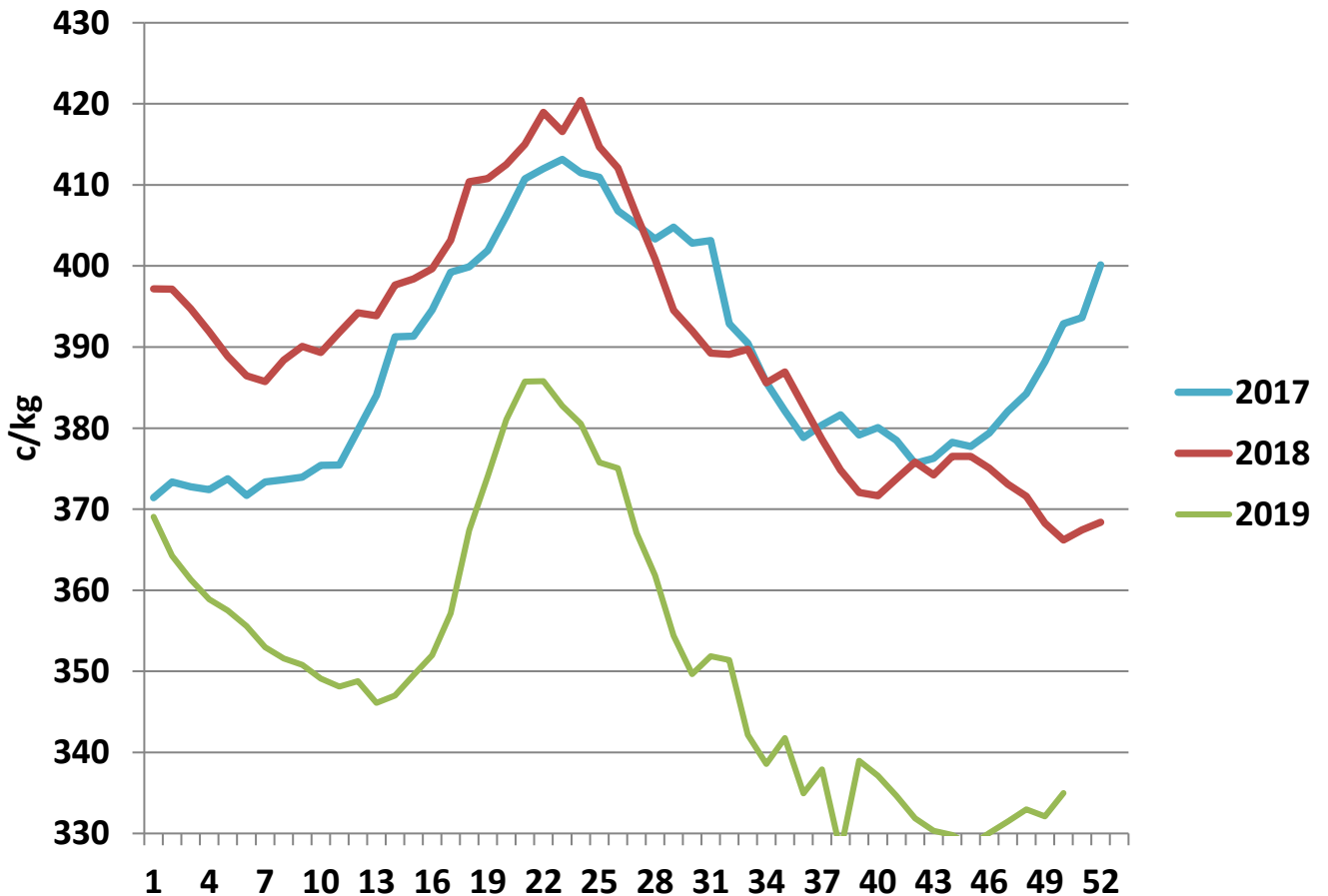
Livestock Pricing

| | Ireland | NI | Britain | EU 14 Average | France | Germany |
|------------|---------|-----|---------|---------------|--------|---------|
| 09/12/2019 | 348 | 402 | 398 | 365 | 386 | 376 |

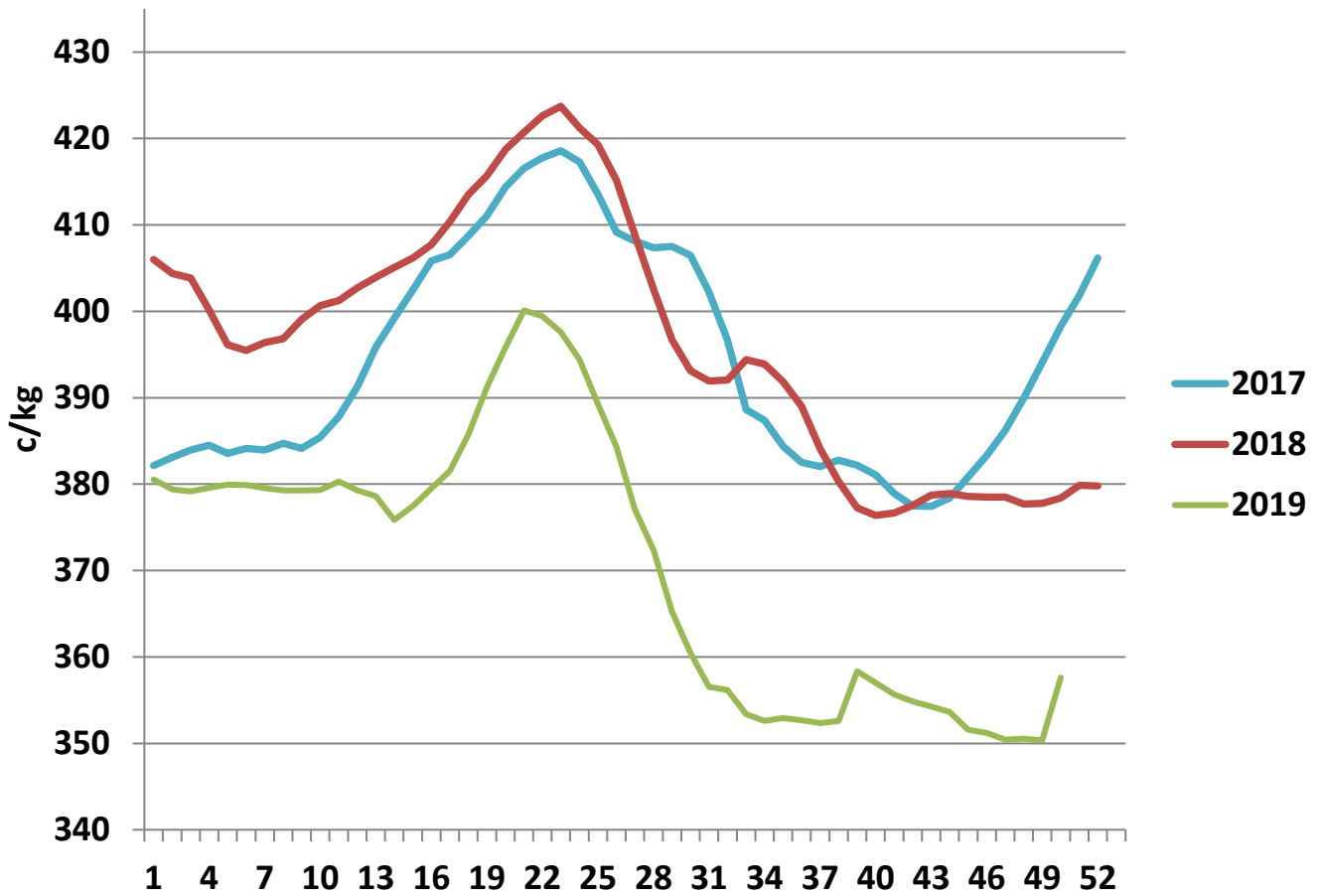
R3 Steer prices ex. VAT



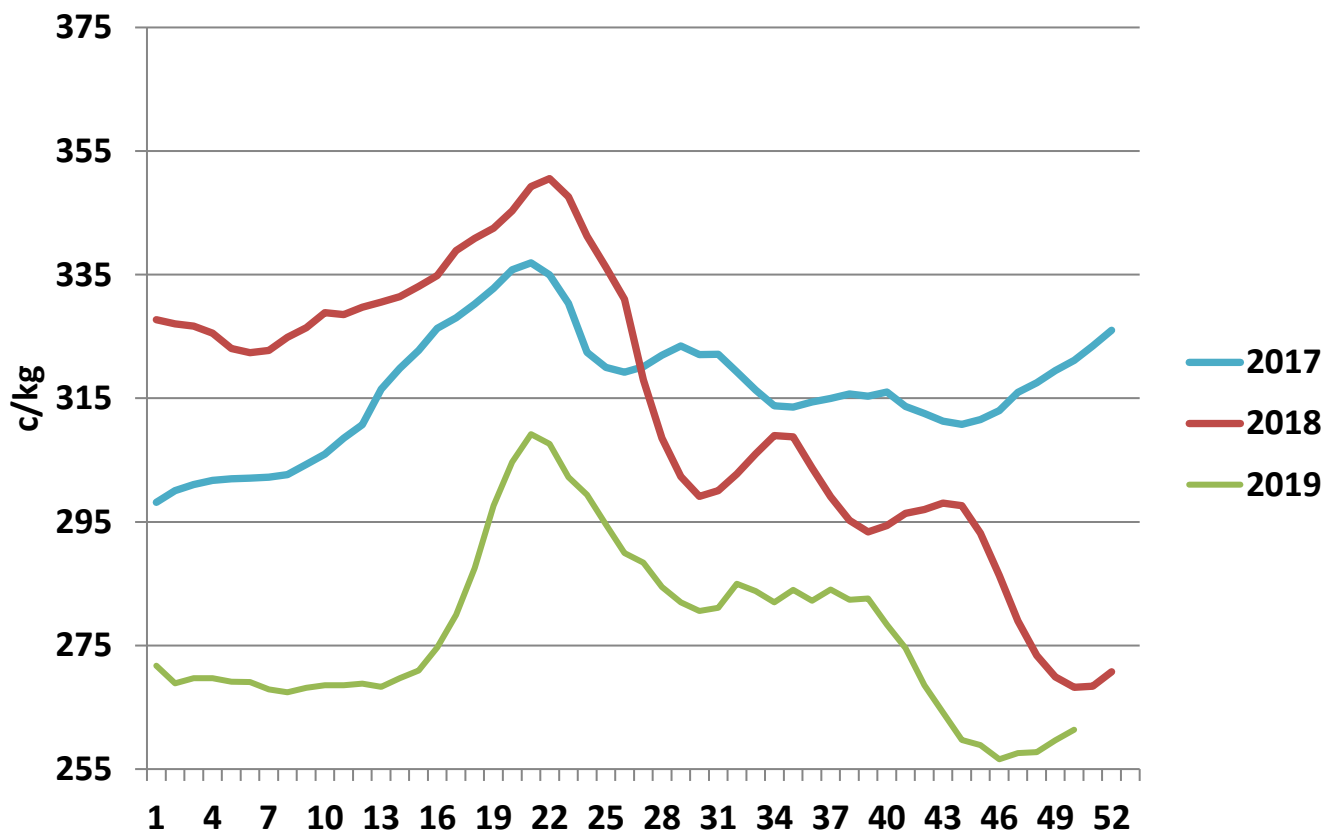
U3 Young Bull prices ex. VAT



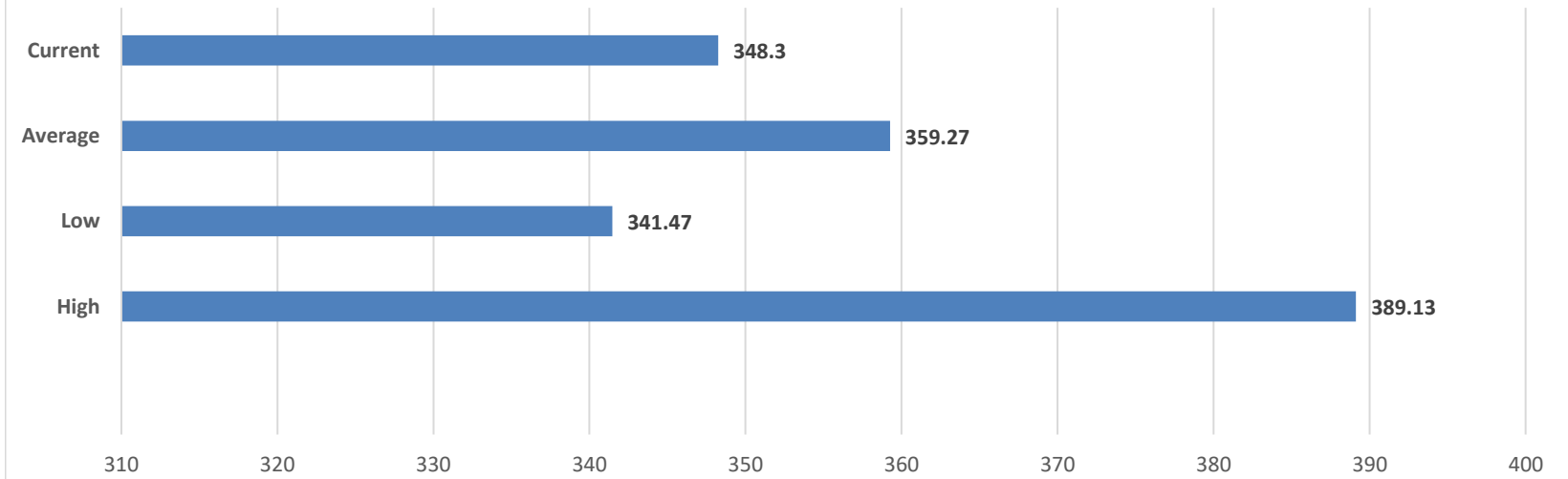
R3 Heifer prices ex. VAT



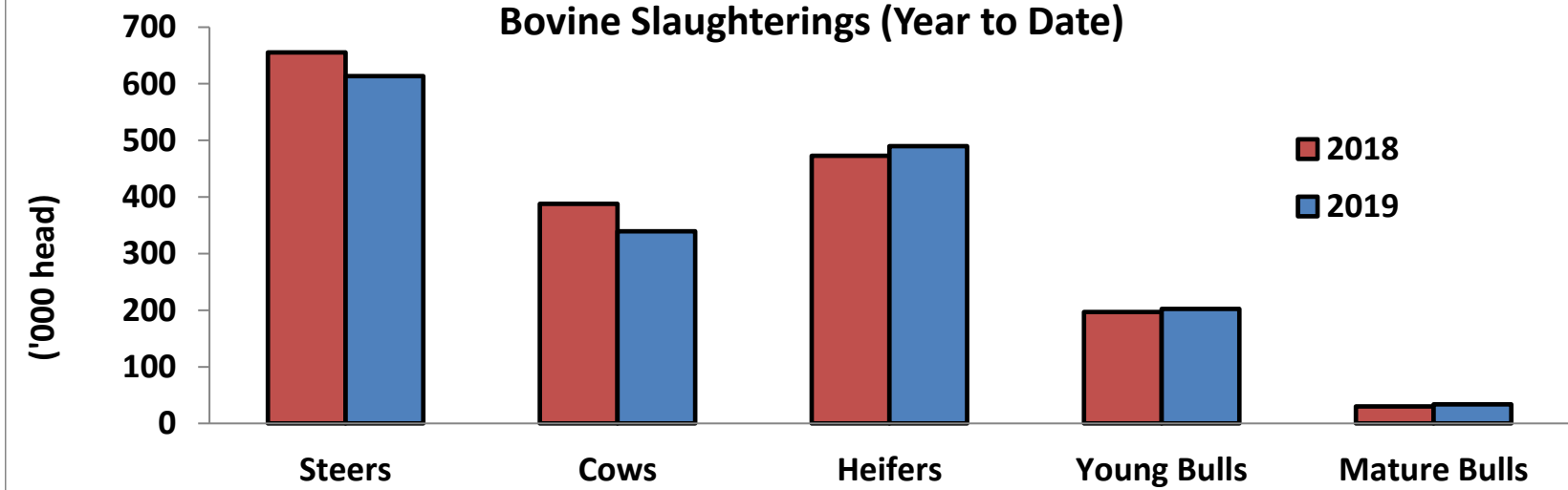
O4 Cow prices ex. VAT



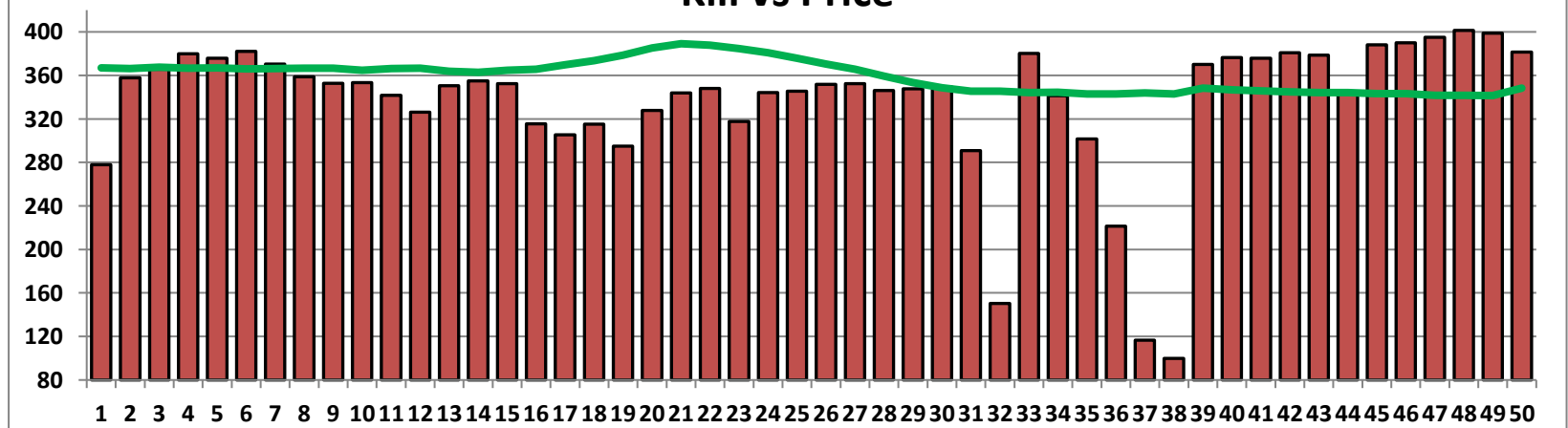
6 Month R3 Steer Statistics



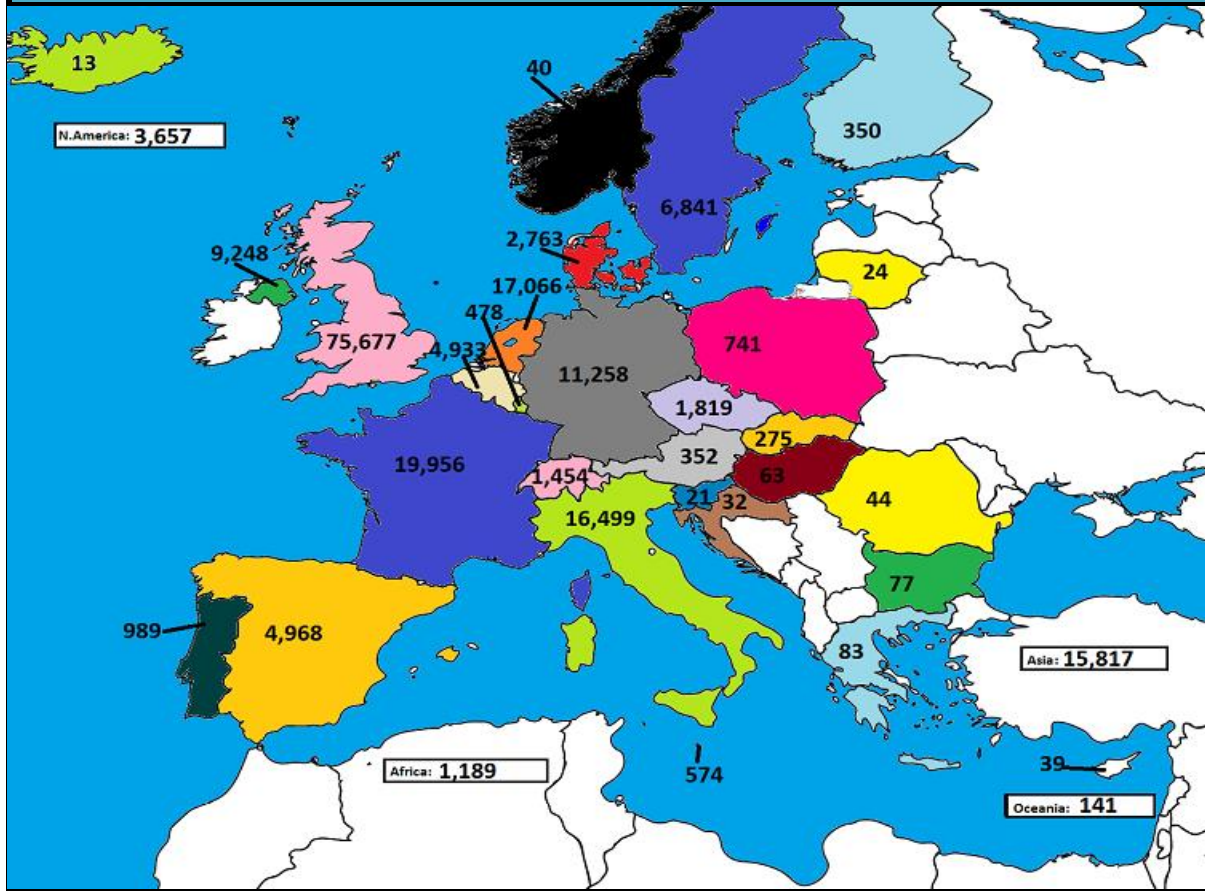
Bovine Slaughtering (Year to Date)



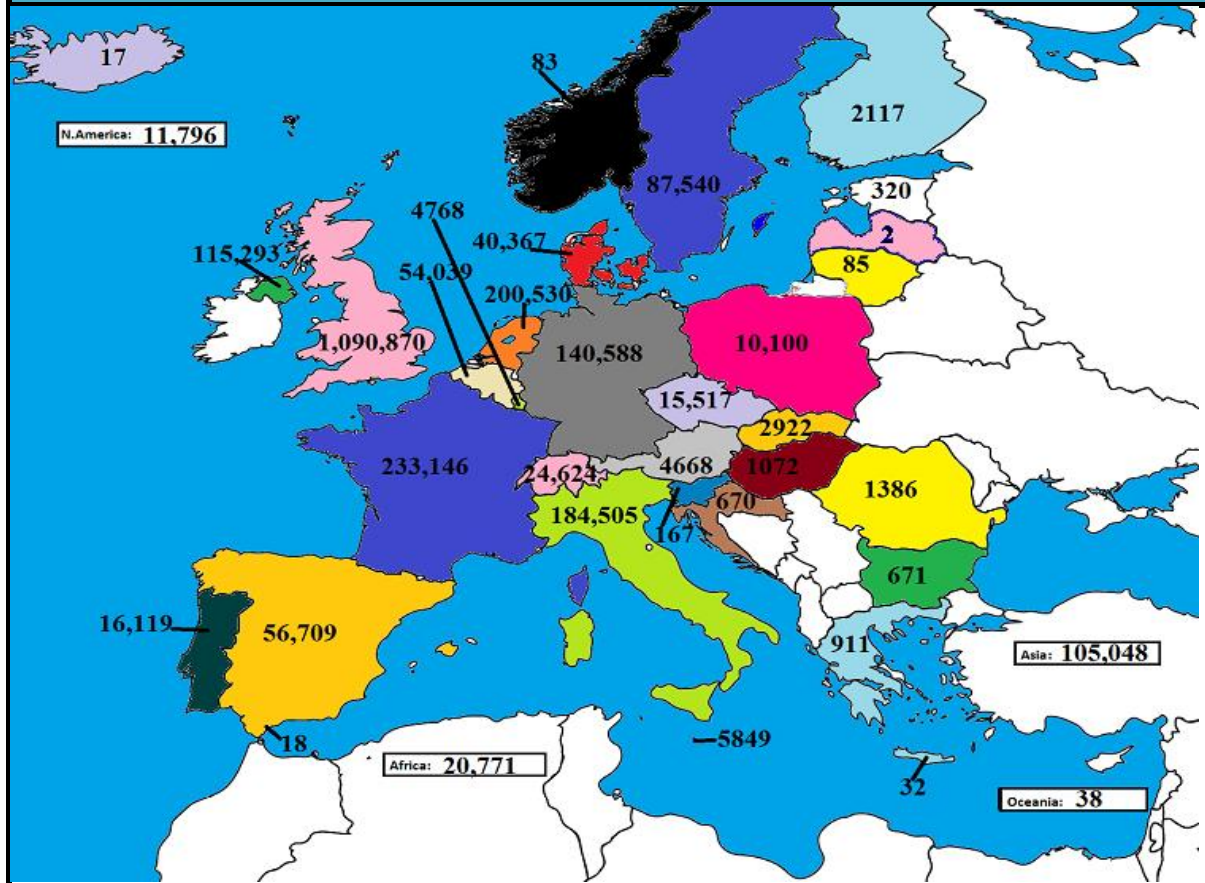
Kill vs Price



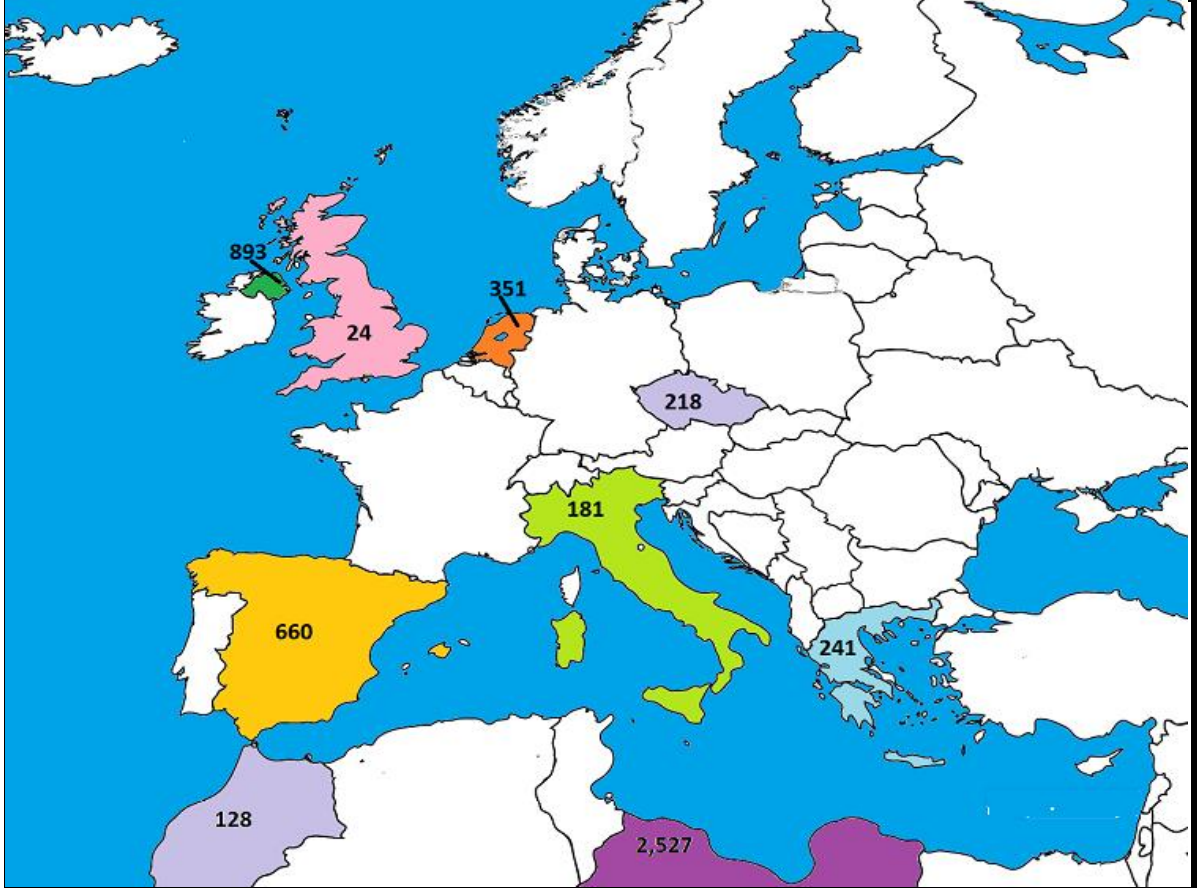
October 2019 Beef exports, €000 (CSO figures)



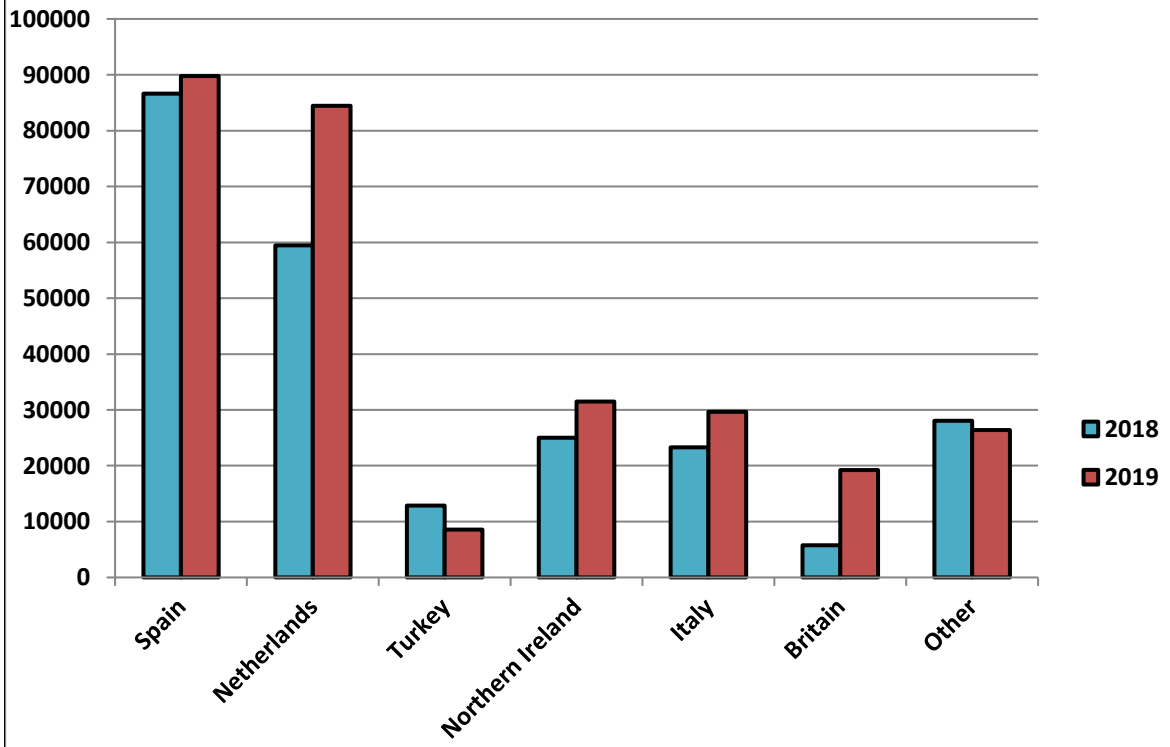
Cumulative beef exports to Dec 2018, €000 (CSO figures)

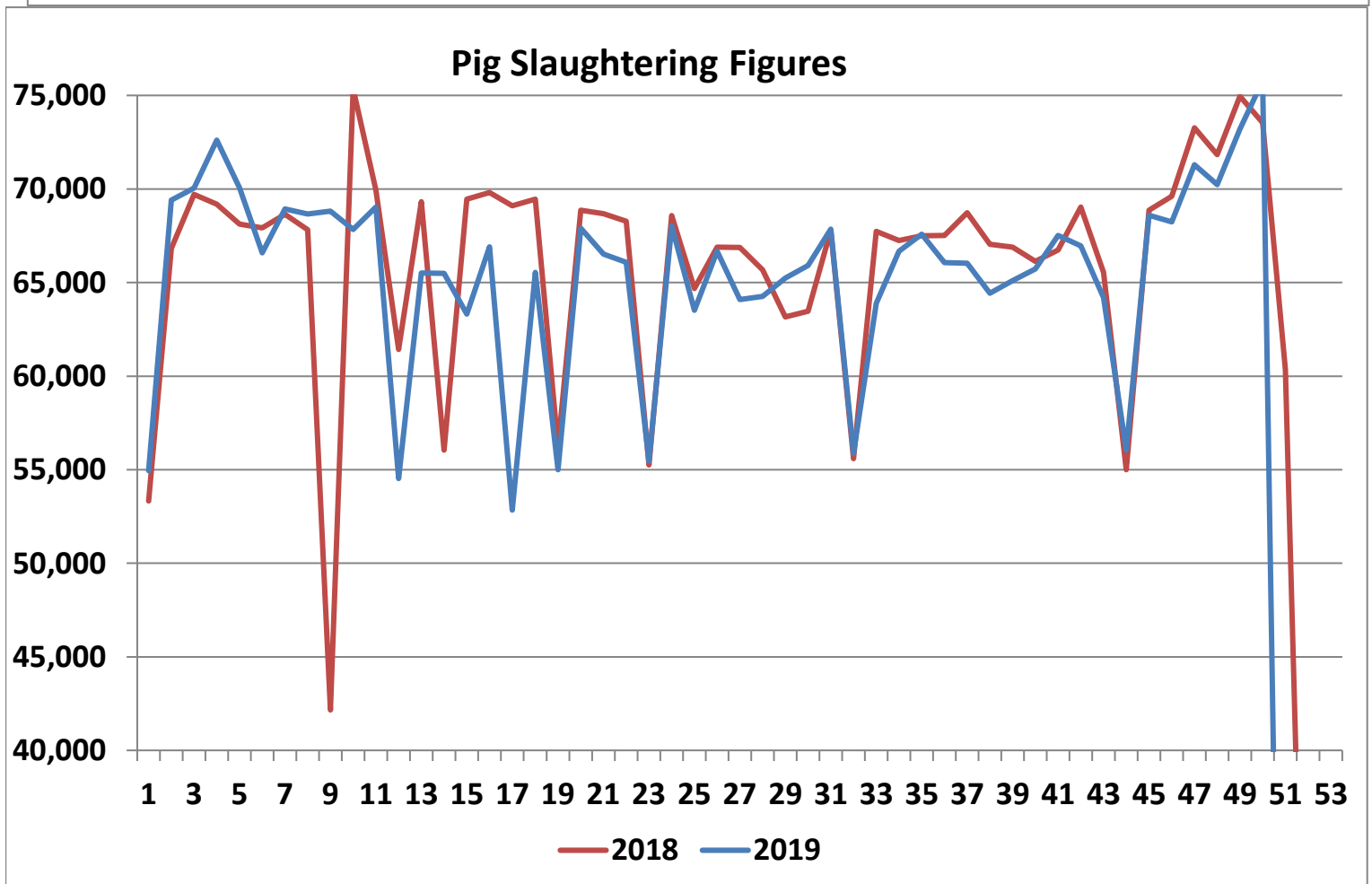
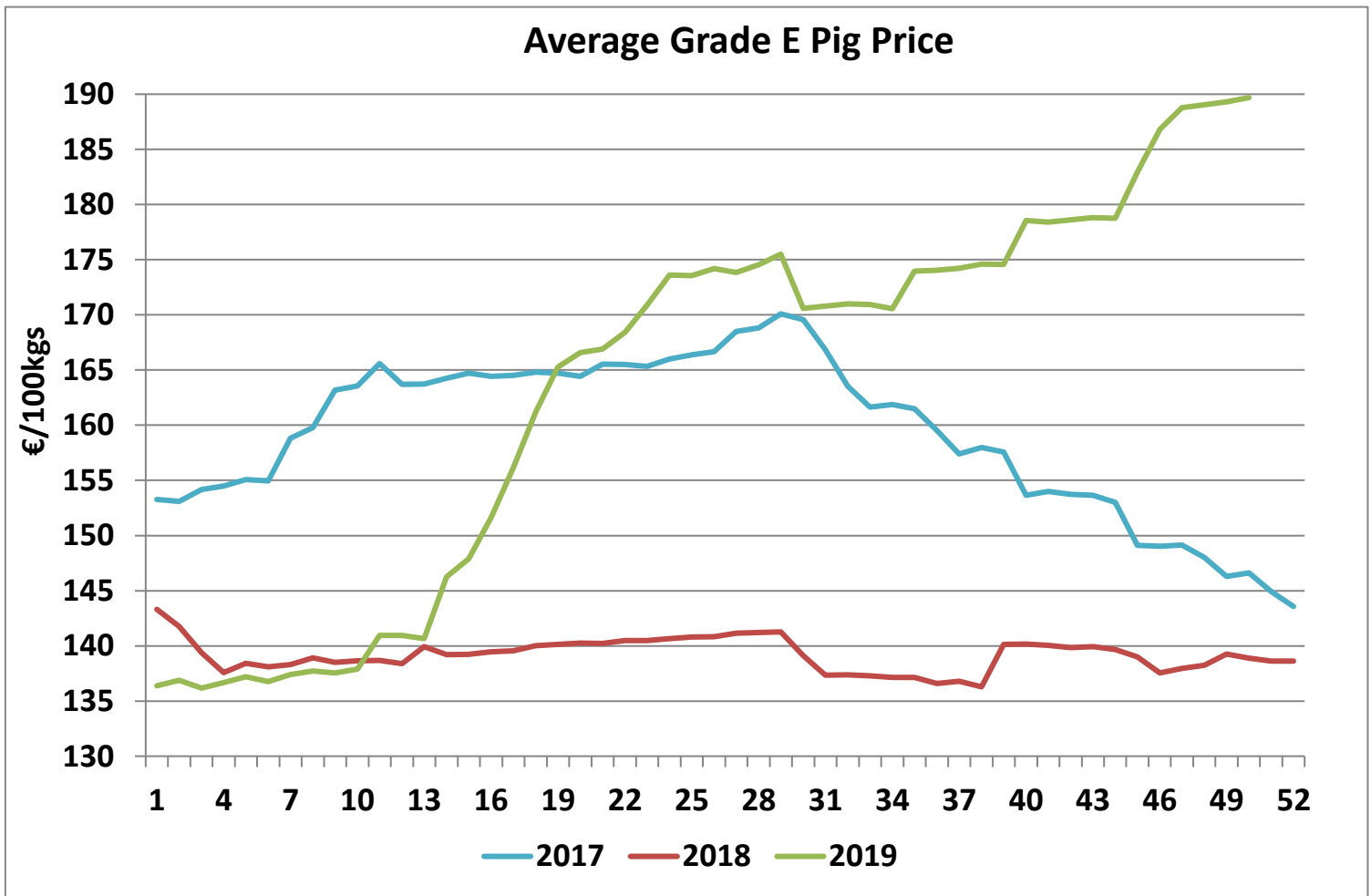


Cattle exported, w/c 02/12/19



Cumulative cattle export figures, 2019





Sheepmeat Information for Week 50

NOTE: EU PRICES ARE PROVISIONAL AT THE TIME OF PUBLICATION AND MAY NOT BE REFLECTIVE OF THE CURRENT PERIOD

| Irish Prices €/100 kg | 2019 | 2018 | Change |
|-----------------------|--------|--------|--------|
| Ave Factory Price | 473.06 | 468.75 | 0.9% |
| Ave Mart Price | 401.59 | 396.15 | 1.4% |
| National Ave Price | 451.62 | 446.97 | 1.0% |
| YTD Ave | 460.15 | 483.09 | -4.7% |

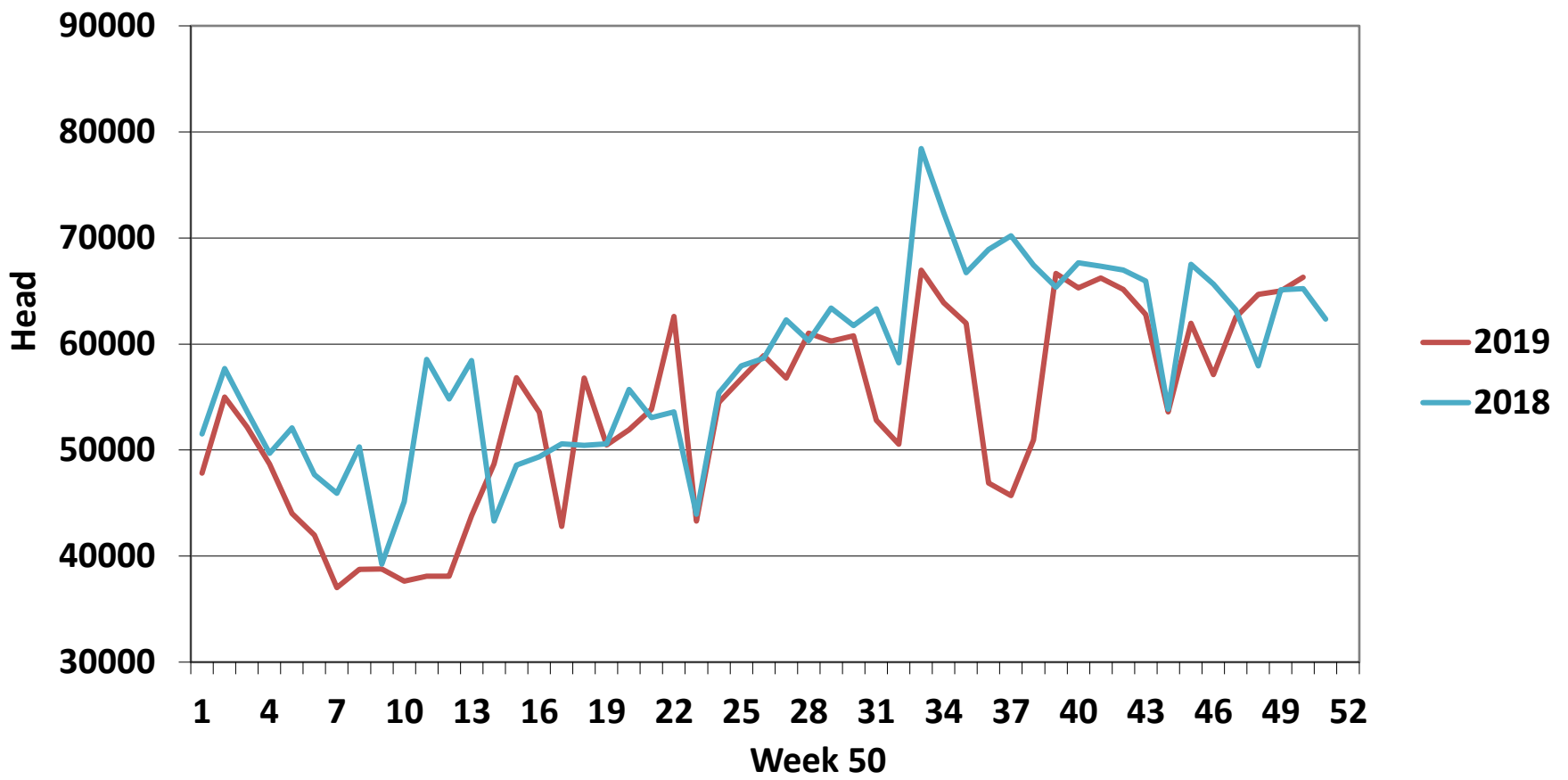
| EU Market Rates Heavy Lambs | €/100kg |
|-----------------------------|---------|
| Belgium | 465.9 |
| Denmark | 512.7 |
| Germany | 518.5 |
| Spain | 614.1 |
| France | 670.0 |
| Croatia | 583.7 |
| Ireland | 451.6 |
| Italy | 644.0 |
| Cyprus | 652.0 |
| Latvia | 346.0 |
| Lithuania | 377.8 |
| Netherlands | 472.7 |
| Austria | 568.0 |
| Poland | 435.9 |
| Romania | 263.5 |
| Finland | 387.0 |
| Sweden | 436.0 |
| Northern Ireland | 452.3 |
| Great Britain | 513.4 |
| United Kingdom | 509.1 |
| Community | 532.7 |

| Slaughterings | 2019 | 2018 | Change |
|---------------|-----------|-----------|--------|
| Weekly | 66,286 | 65,212 | 2% |
| YTD | 2,688,590 | 2,901,060 | -7% |

**REPORT ON SLAUGHTERING AT SHEEP EXPORT PREMISES
WEEK 50**

| CATEGORY | 2019 | | 2018 | | DIFFERENCE | |
|---------------|---------------|------------------|---------------|------------------|--------------|-----------------|
| | Weekly | Cumulative | Weekly | Cumulative | Weekly | Cumulative |
| Lambs/Hoggets | 54 | 738,962 | 119 | 829,815 | -65 | -90,853 |
| Spring Lambs | 57,293 | 1,551,943 | 53,799 | 1,577,080 | 3,494 | -25,137 |
| Ewes and Rams | 8,939 | 397,109 | 11,294 | 493,989 | -2,355 | -96,880 |
| Light Lambs | | 576 | | 176 | 0 | 400 |
| TOTAL | 66,286 | 2,688,590 | 65,212 | 2,901,060 | 1,074 | -212,470 |

Weekly Sheep Slaughtering



Ave. Price €/100 kg for Sheepmeat

