

Meat Market Report

16/12/19 - 22/12/19

Week

51



**An Roinn Talmhaíochta,
Bia agus Mara**

Department of Agriculture,
Food and the Marine

MARKET SUMMARY

Beef

Deadweight Prices c/100Kg (Including VAT)

	U3	U4	R3	R4	O3	O4	P+3
Steers	380.0	378.0	371.0	369.0	352.0	350.0	323.0
Heifers	391.0	388.0	379.0	377.0	362.0	361.0	321.0
Young Bulls	356.0	354.0	344.0	343.0	328.0	329.0	315.0
Cows			300.0	300.0	277.0	276.0	261.0

Liveweight Prices

*Bull Calf Average Price	€144.9 per head (Excluding VAT)
**Young Store Average Price	€206.0 per 100kg (Excluding VAT)
***Yearling (male & female) Price	€179.5 per 100kg (Excluding VAT)

* Aged 8-28 days ** Aged 180-364 days, Male & Female ***age 365-730 days

Slaughterings

31,988 cattle slaughtered this week, of which steers were 10,437 (33%), heifers 9436 (30%), young bulls 4,930 (15%) and cows 6,604 (21%). Total YTD slaughter is 1,710,830 compared to 1,774,690 in 2018, a 4% decrease.

Live Trade

2,430 cattle were exported in the week commencing 16/12/2019, 1,619 to EU (Except NI). Live exports for 2019 amount to 297,897 compared to 245,372 in 2018, up 21% on 2018 levels.

*This data is provisional and subject to revision.

The next meeting of the Management Committee for the Common Organisation of Agricultural Markets (Animal Products Sector) is 23rd January 2020

CONTENTS:

Page 2: Market Summary Beef
 Page 3: Market Summary Other Meats
 Page 4: Beef Price and Slaughter Summary
 Page 5: Comparative Beef Prices
 Page 6: Steer and Young Bull Price
 Page 7: Heifer and Cow Graphs
 Page 8: Price and Slaughter Graphs
 Page 9: Liveweight Beef Graphs

Page 10: Beef Export Maps
 Page 11: Beef Export Info
 Page 12: Pig price and slaughter graphs
 Page 13: Sheep prices and slaughter
 Page 15: Sheep price and slaughter graphs

MARKET SUMMARY

Pigmeat

Grade E Pig
Prices (Ex.
VAT)

The Grade E Pig price for week commencing 16/12/2019 was €190.00 per 100Kg compared to €138.62 in the same week last year, which represents a 37% increase.

Slaughtering

70,903 pigs were slaughtered in week 51 of which 351 were sows. The cumulative figure for pig slaughterings in 2019 is 3,352,973 which is a 1% decrease with the same point last year.

Sheepmeat

Sheepmeat
Prices (Ex.
VAT)

The national average price for the week commencing 16/12/2019 was €456.37 per 100Kg, an increase of 2% over the same week last year.

Slaughtering

64,771 sheep were slaughtered at sheep export premises the week commencing 16/12/2019, compared to 62,350 in the same week of 2018. Sheep slaughterings for 2019 are 7% down on 2018 at 2,753,361 head.

Live Trade

Total live exports to European Countries stood at 7,160 head to the end of August 2019.

Poultry

Slaughtering

Cumulative poultry slaughterings for 2019* stand at 104,916,331 birds at the end of week 51, up 8% compared to the same period last year.

*Latest Figures are provisional and subject to change

Dead Weight Prices	W/C	W/C	Same week 2018	% change prev week	% change 2018
	16/12/19	09/12/19	17/12/18		
Steers (R3) (c/kg)	351.5	348.3	367.4	0.9%	-4.3%
Heifers (R3) (c/kg)	359.2	357.6	379.9	0.5%	-5.4%
Young Bulls (U3) (c/kg)	337.6	335.0	367.5	0.8%	-8.1%
Cows (04) (c/kg)	262.1	261.4	268.4	0.3%	-2.4%

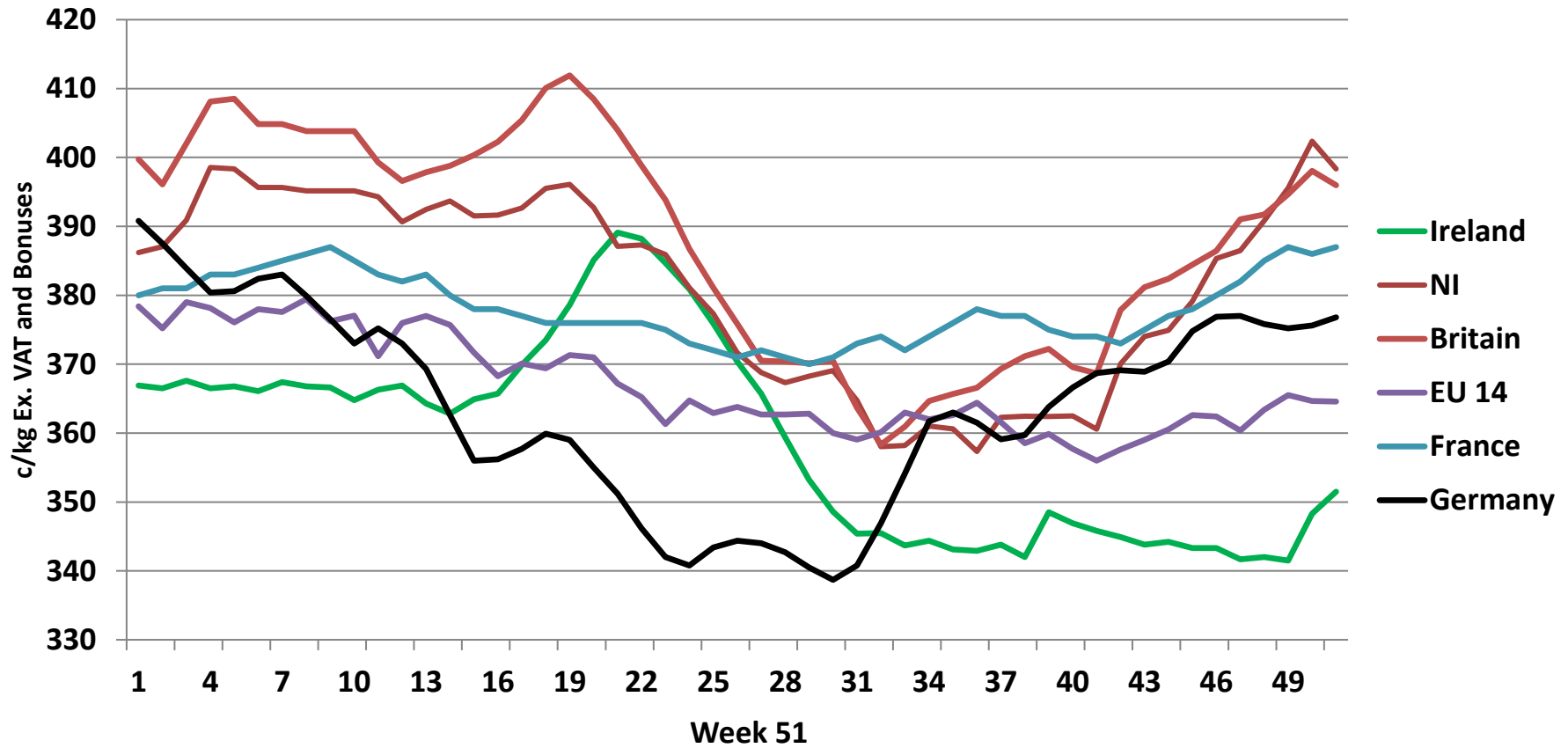
Live Weight Prices	W/C	W/C	Same week 2018	% change previous week	% change 2018
	16/12/19	09/12/19	17/12/18		
Yearlings (Male) (Aged 365 - 730 days) - (€/100Kg)	176	178	173	-1.1%	1.7%
Yearlings (Female) (Aged 365 - 730 days) - (€/100Kg)	183	183	182	0.0%	0.5%
Young Stores (Male & Female) (Aged 180 - 364 days) - (€/100Kg)	206	207	201	-0.5%	2.5%
Bull Calf (€/head) Dairy	82.0	139.9	109.1	-41.3%	-24.8%
Bull Calf (€/head) Beef	207.7	230.8	168.1	-10.0%	23.5%

Slaughter Figures	% of weekly figures	W/C	Same week 2018	Year to Date		Change 2019 v 2018	
		16-Dec-19		2019	2018	Head	%
Steers	32.6%	10,437	9,226	623,837	664,702	-40,865	-6.1%
Cows	20.6%	6,604	6,782	345,716	394,830	-49,114	-12.4%
Heifers	29.5%	9,436	9,524	499,284	482,285	16,999	3.5%
Young Bulls	15.4%	4,930	4,535	207,503	202,246	5,257	2.6%
Mature Bulls	1.8%	581	470	34,490	30,627	3,863	12.6%
Total	100%	31,988	30,537	1,710,830	1,774,690	-63,860	-3.6%

821

Live Exports	W/C	Same week	W/C	Year to Date		Change 2019 v 2018	
	16-Dec-19	2018	09-Dec-19	2019	2018	Head	%
Northern Ireland	811	738	1,018	33,554	24,613	8,941	36%
EU Except NI	1,619	1,453	510	240,430	201,760	38,670	19%
Third Countries	0	0	1,748	23,913	18,999	4,914	-
Total	2,430	2,191	3,276	297,897	245,372	52,525	21%
Calves YTD:	200,101			Adult YTD:Cattle		97,654	

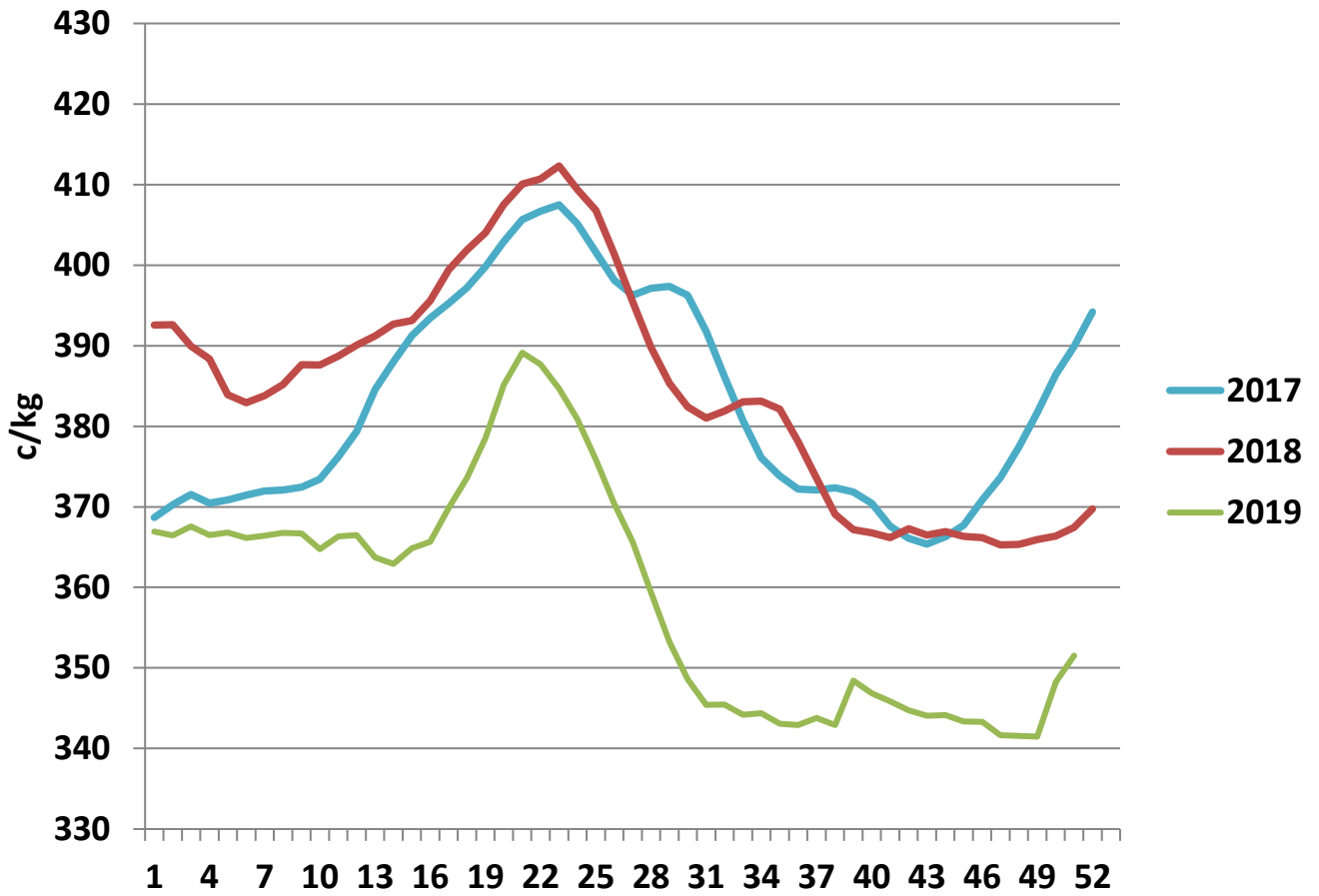
Irish Deadweight Cattle Prices vs Selected Other Markets, 2019



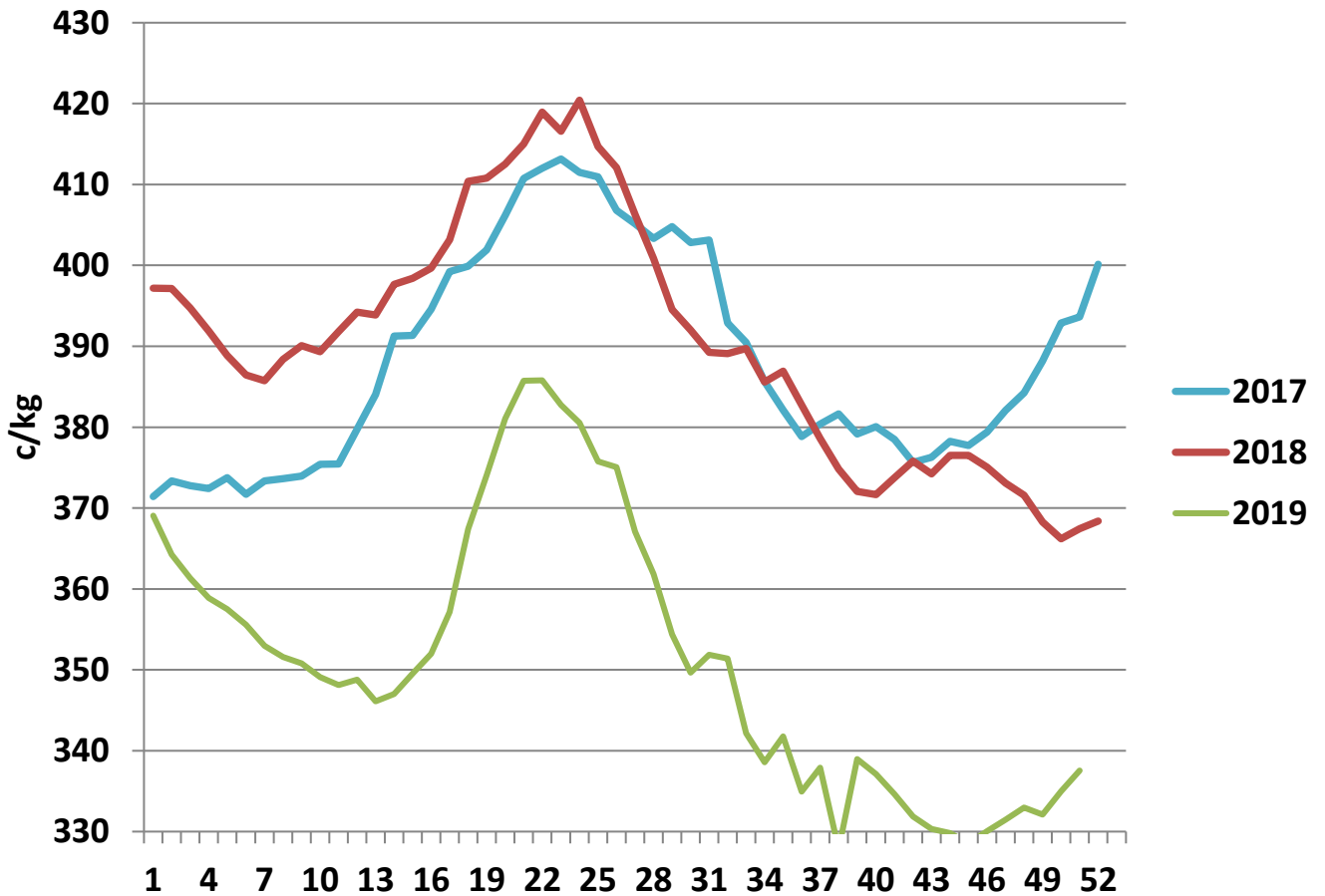
Livestock Pricing

	Ireland	NI	Britain	EU 14 Average	France	Germany
16/12/2019	352	398	396	365	387	377

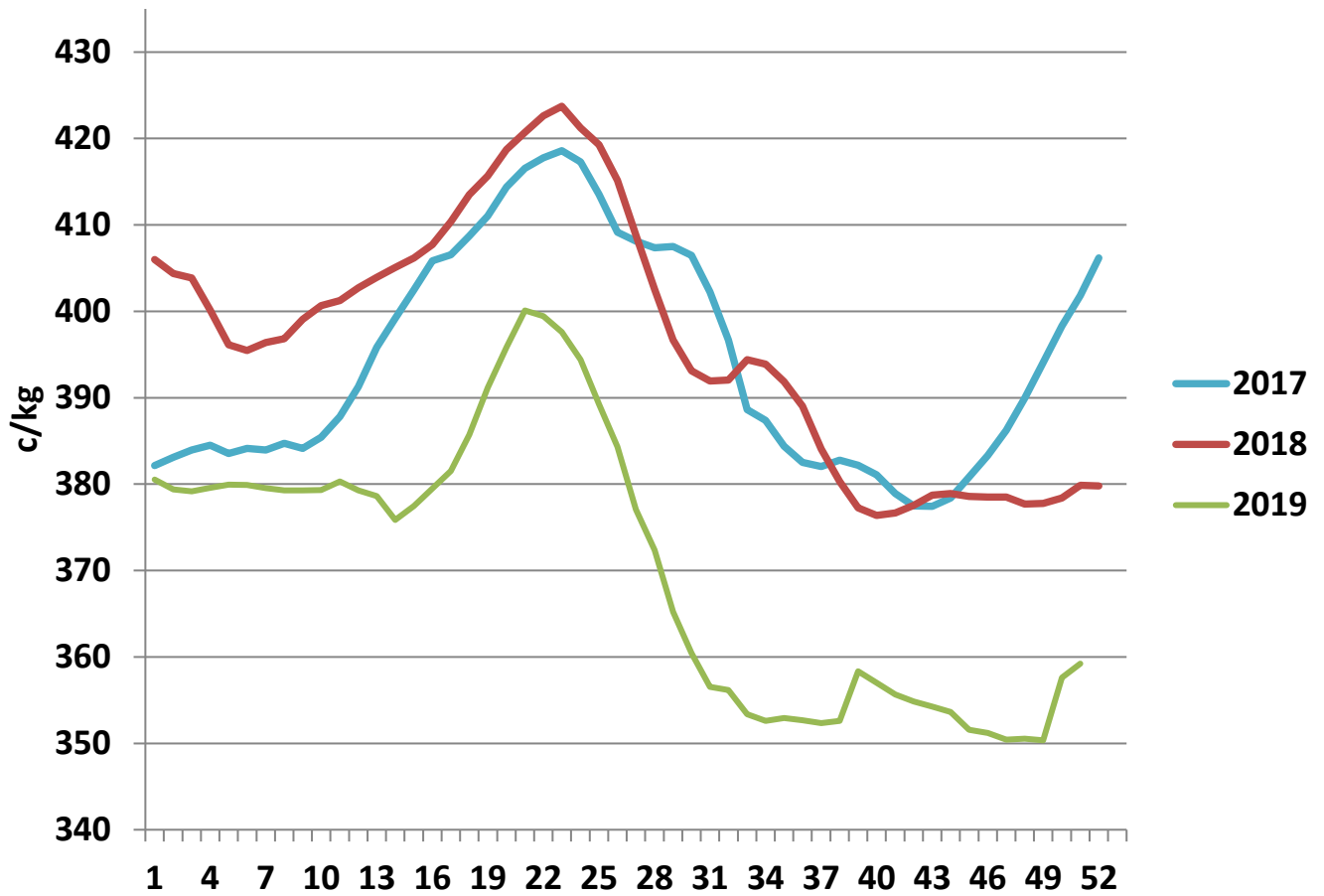
R3 Steer prices ex. VAT



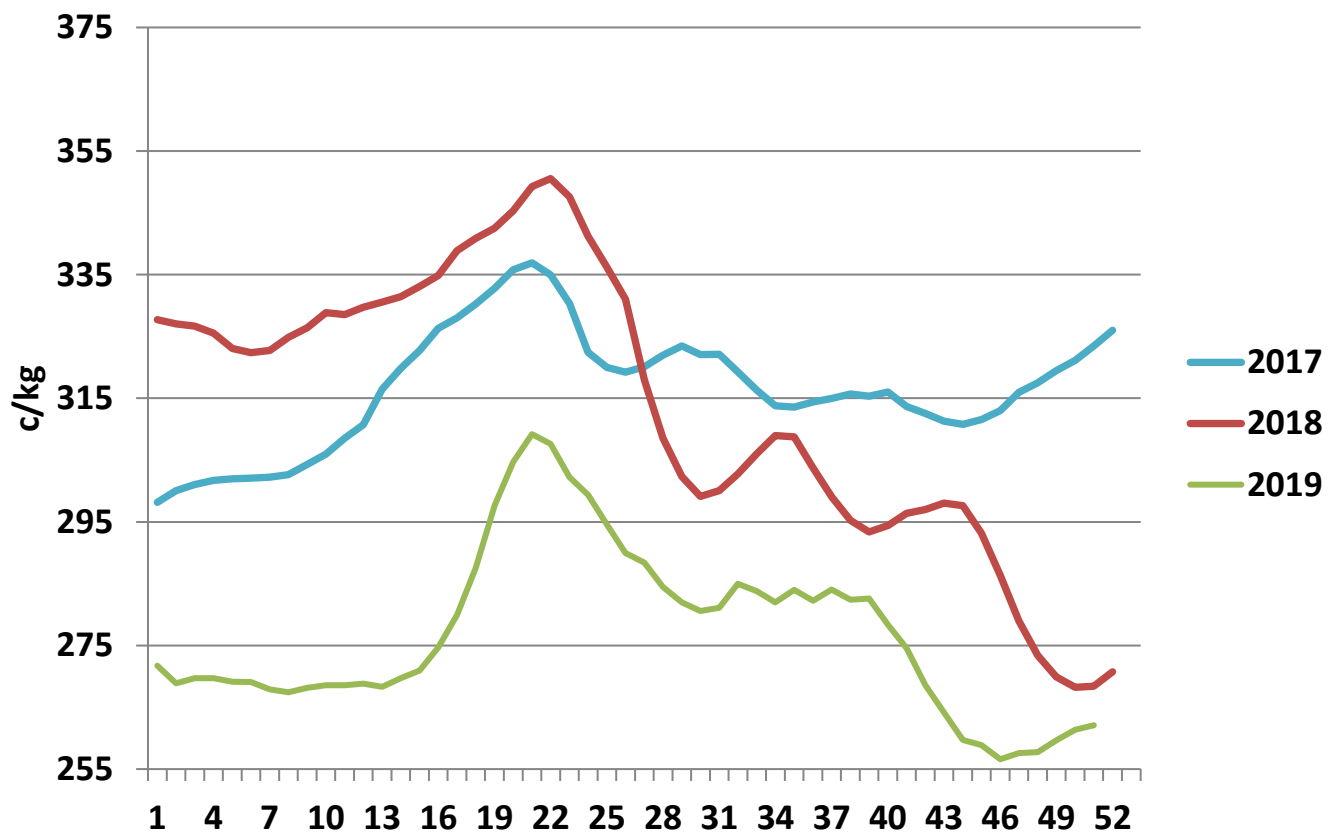
U3 Young Bull prices ex. VAT



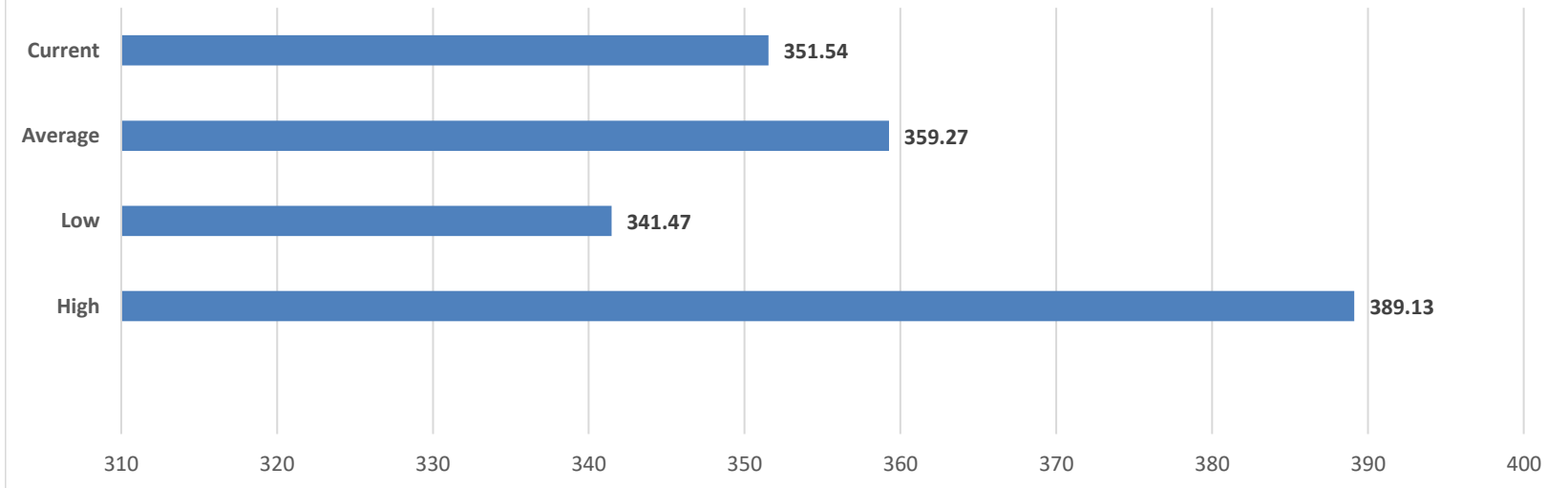
R3 Heifer prices ex. VAT



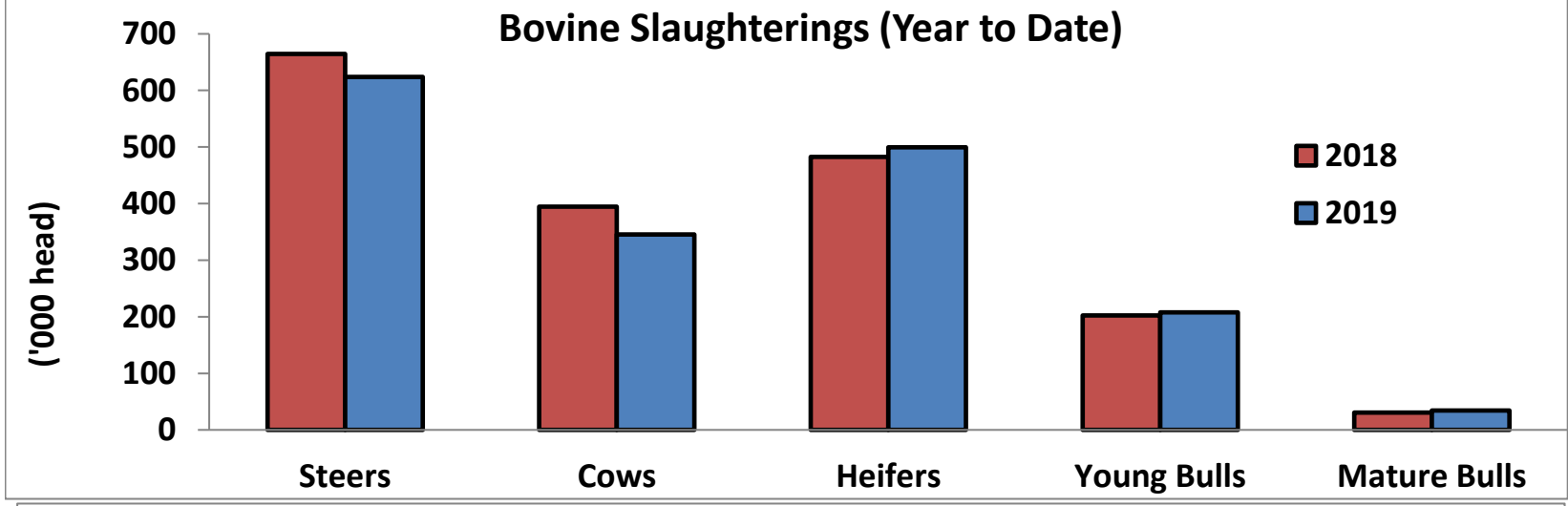
O4 Cow prices ex. VAT



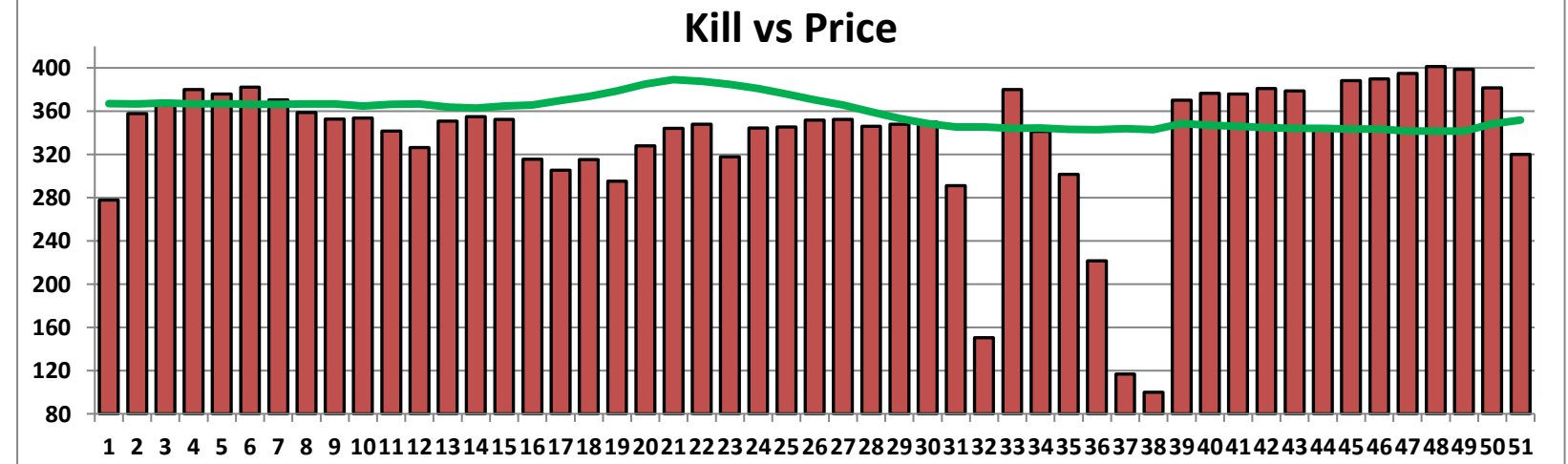
6 Month R3 Steer Statistics

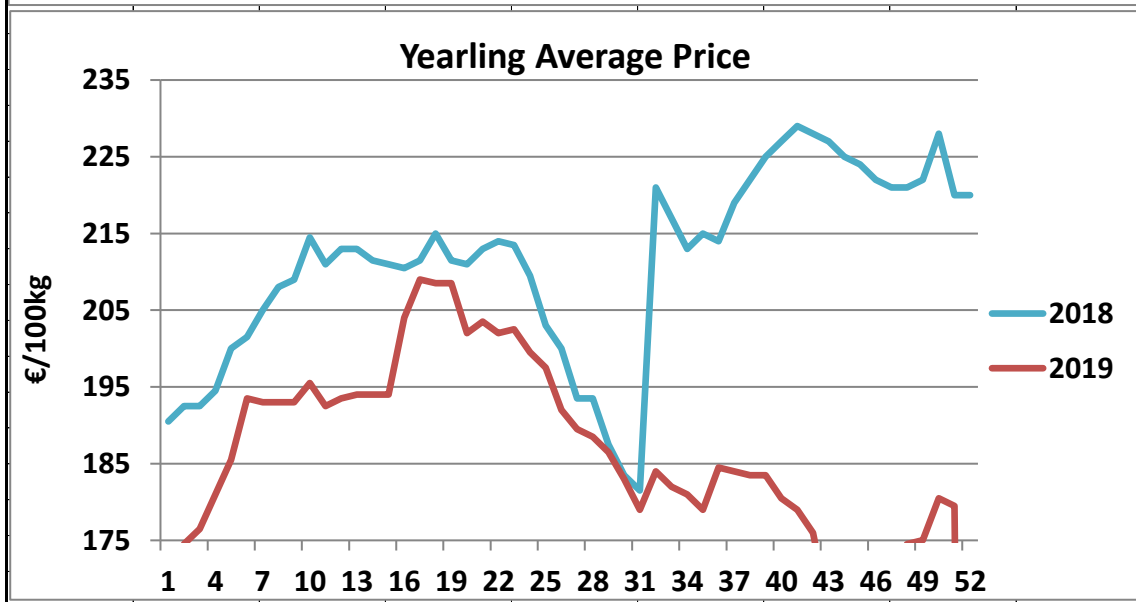
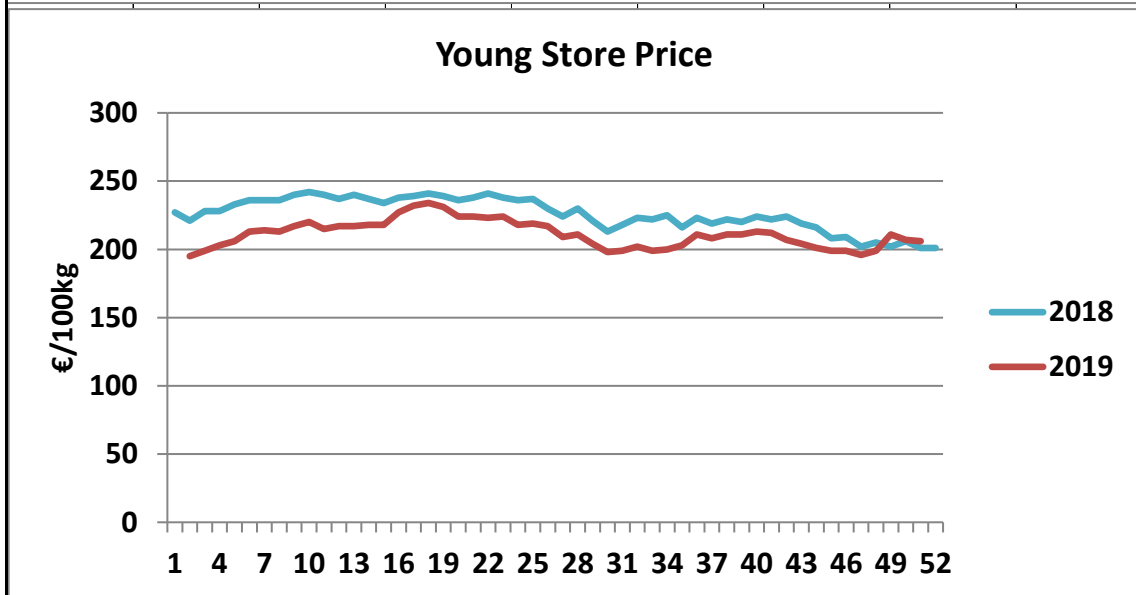
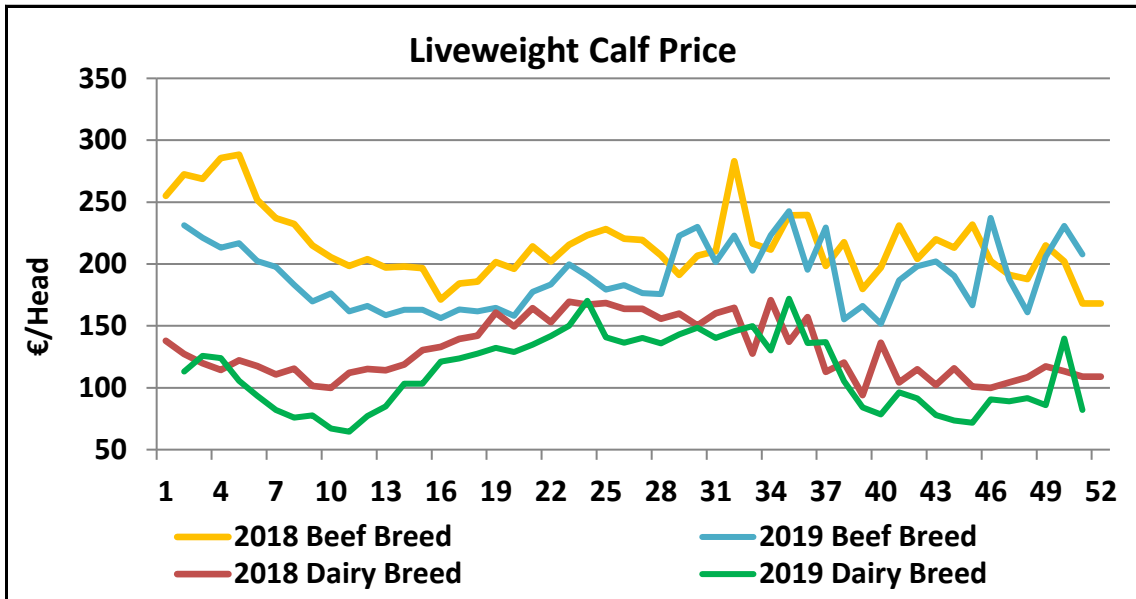


Bovine Slaughtering (Year to Date)

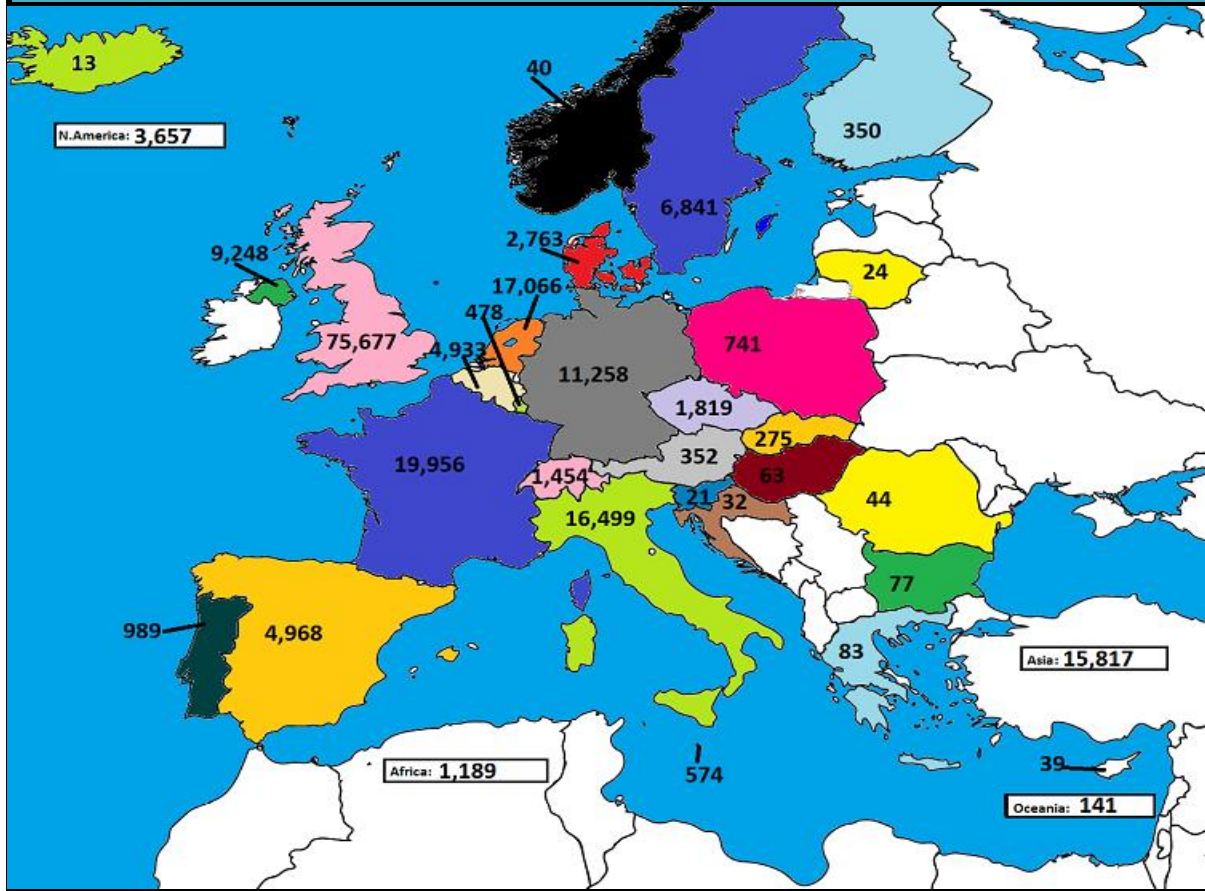


Kill vs Price

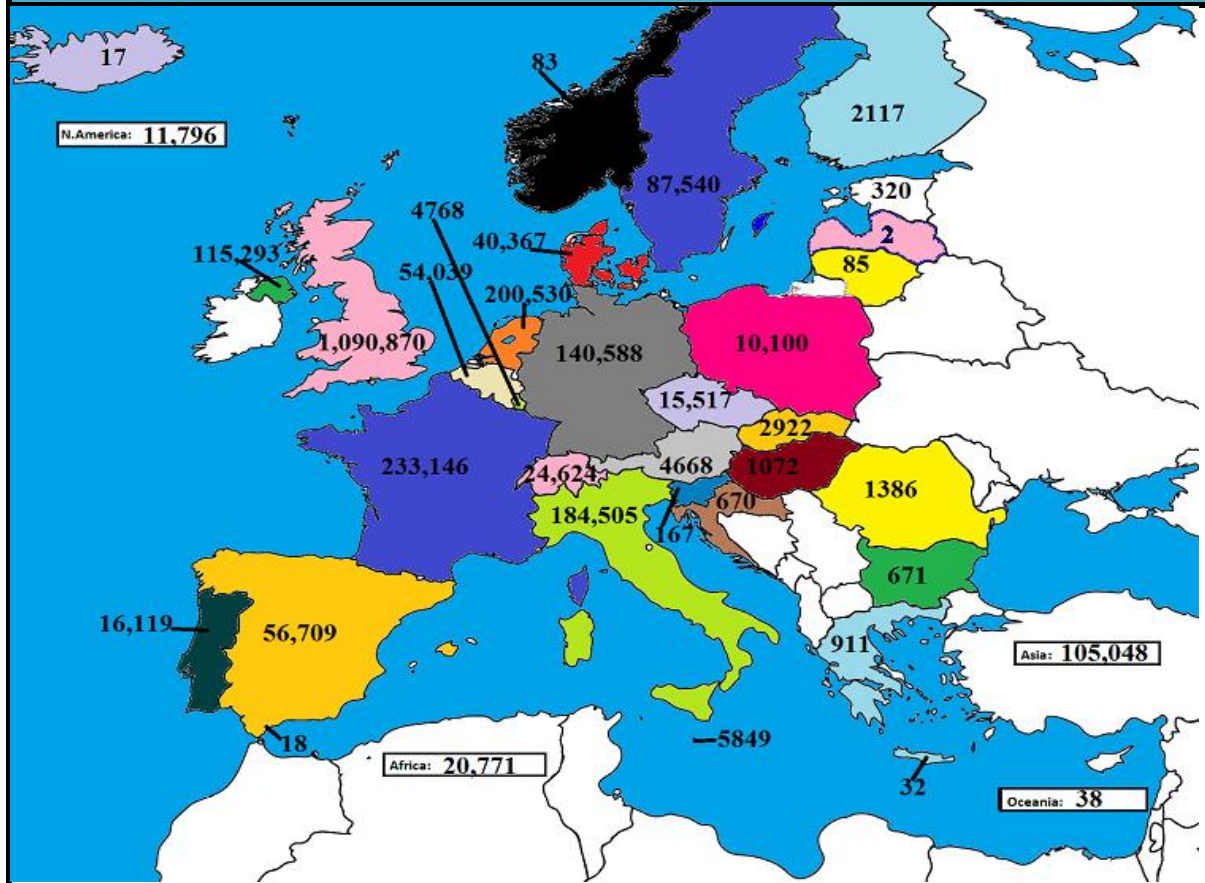




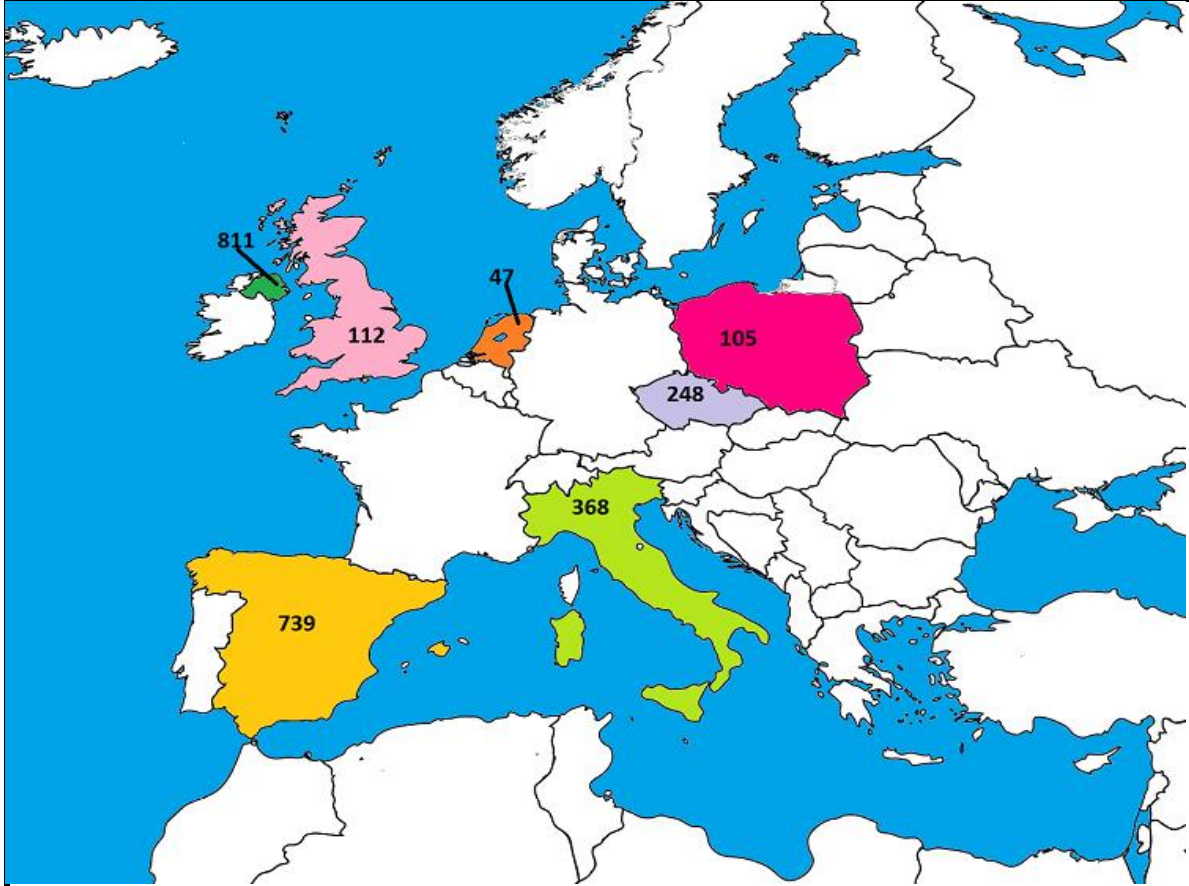
October 2019 Beef exports, €000 (CSO figures)



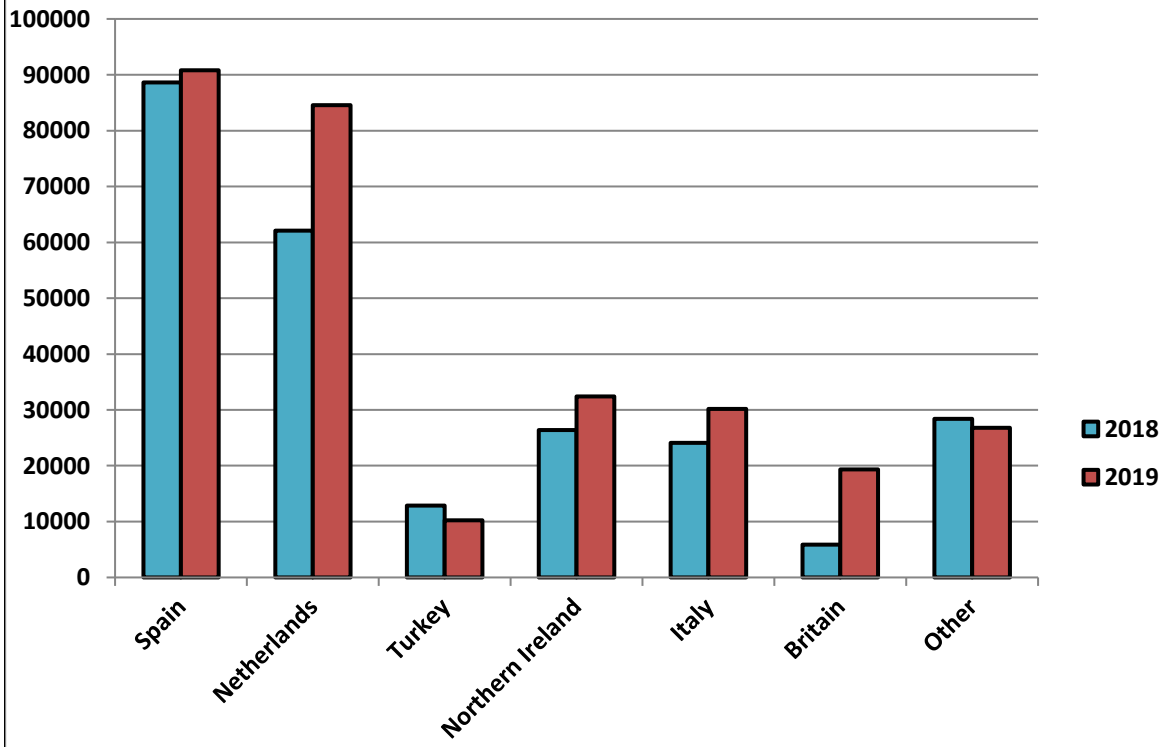
Cumulative beef exports to Dec 2018, €000 (CSO figures)



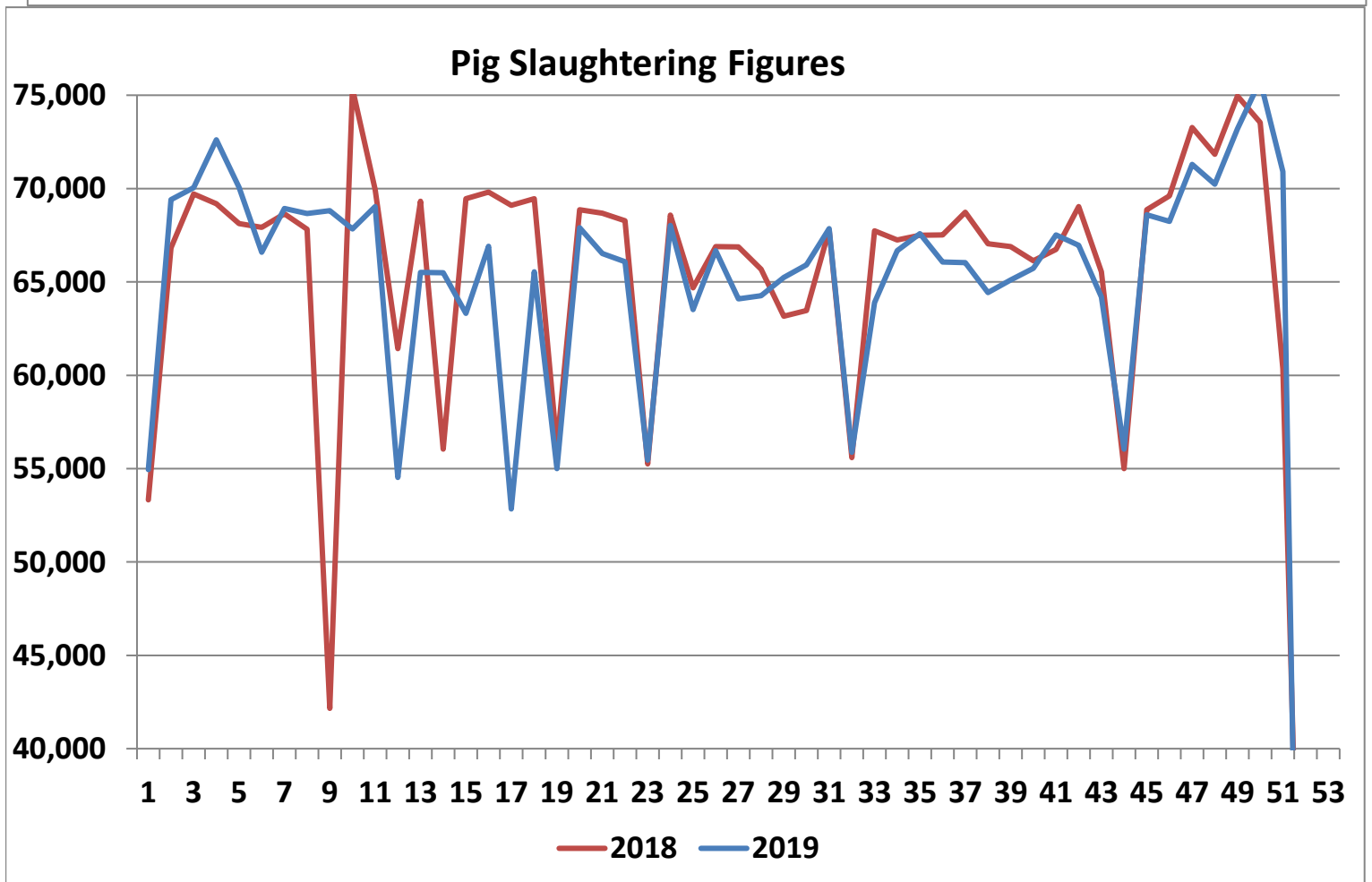
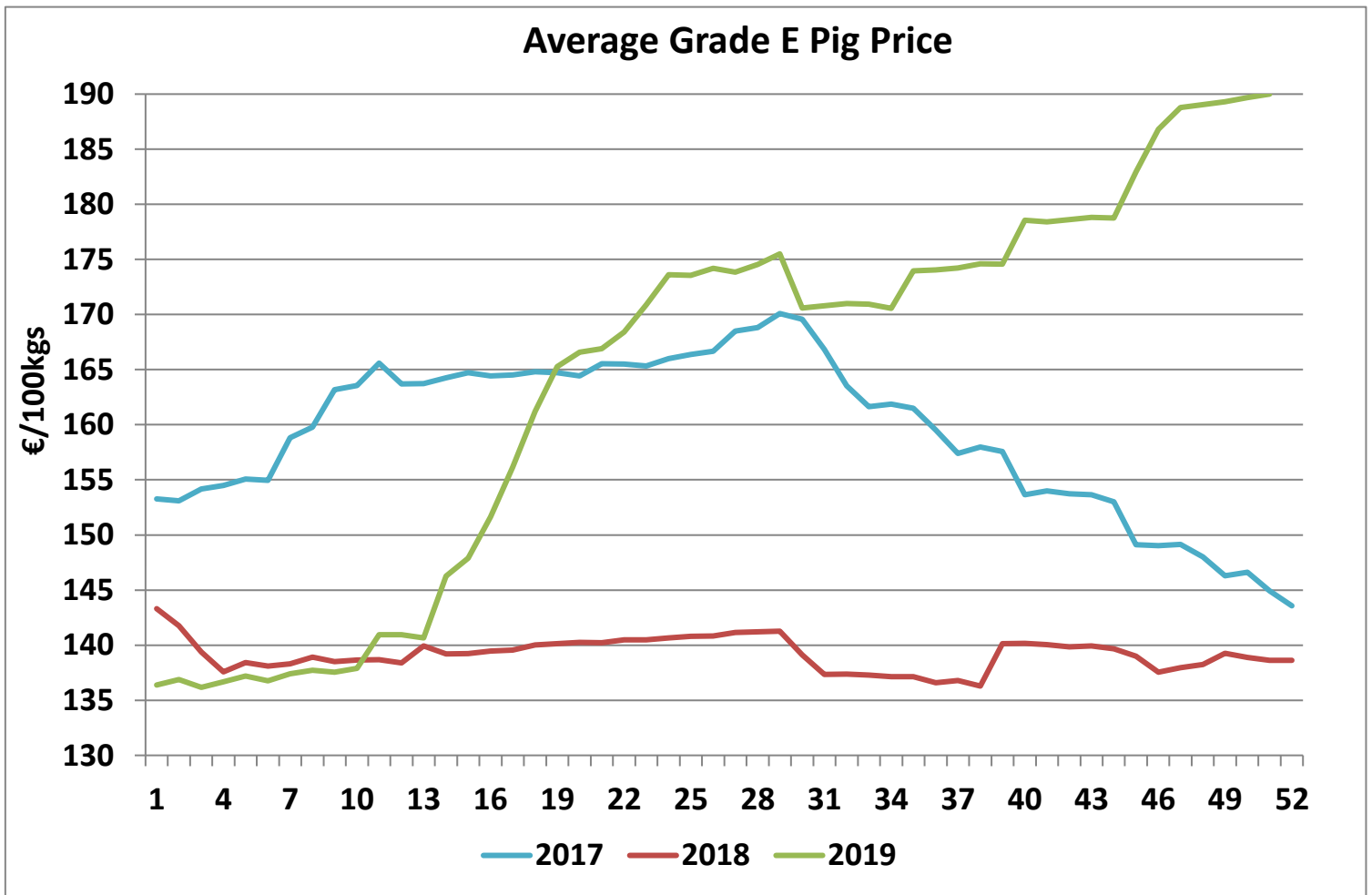
Cattle exported, w/c 16/12/19



Cumulative cattle export figures, 2019



Irish Average Grade E Pig Prices - €/100kgs					
Week	2019	Weeklv %	% change	2018	2017
1	136.39		-4.8%	143.31	153.27
2	136.87	0.4%	-3.4%	141.76	153.10
3	136.17	-0.5%	-2.3%	139.39	154.17
4	136.68	0.4%	-0.6%	137.57	154.48
5	137.19	0.4%	-0.9%	138.43	155.06
6	136.75	-0.3%	-1.0%	138.10	154.96
7	137.39	0.5%	-0.7%	138.30	158.82
8	137.71	0.2%	-0.9%	138.92	159.79
9	137.55	-0.1%	-0.7%	138.51	163.19
10	137.91	0.3%	-0.5%	138.66	163.55
11	140.96	2.2%	1.6%	138.69	165.58
12	140.96	0.0%	1.8%	138.40	163.71
13	140.67	-0.2%	0.5%	139.93	163.72
14	146.26	4.0%	5.1%	139.20	164.25
15	147.90	1.1%	6.2%	139.23	164.71
16	151.65	2.5%	8.7%	139.47	164.43
17	156.15	3.0%	11.9%	139.54	164.52
18	161.20	3.2%	15.1%	140.02	164.80
19	165.27	2.5%	17.9%	140.12	164.71
20	166.59	0.8%	18.8%	140.25	164.42
21	166.91	0.2%	19.0%	140.22	165.52
22	168.40	0.9%	19.9%	140.48	165.50
23	170.87	1.5%	21.6%	140.47	165.33
24	173.62	1.6%	23.4%	140.66	165.99
25	173.56	0.0%	23.3%	140.79	166.39
26	174.18	0.4%	23.7%	140.84	166.68
27	173.85	-0.2%	23.2%	141.14	168.50
28	174.53	0.4%	23.6%	141.21	168.83
29	175.50	0.6%	24.2%	141.26	170.09
30	170.58	-2.8%	22.6%	139.12	169.56
31	170.79	0.1%	24.4%	137.33	166.84
32	171.00	0.1%	24.5%	137.37	163.53
33	170.93	0.0%	24.5%	137.30	161.65
34	170.56	-0.2%	24.4%	137.15	161.88
35	173.97	2.0%	26.9%	137.13	161.49
36	174.05	0.0%	27.4%	136.59	159.53
37	174.21	0.1%	27.3%	136.80	157.41
38	174.59	0.2%	28.1%	136.29	157.97
39	174.56	0.0%	24.6%	140.14	157.57
40	178.56	2.3%	27.4%	140.17	153.65
41	178.40	-0.1%	27.4%	140.04	154.00
42	178.61	0.1%	27.7%	139.85	153.73
43	178.82	0.1%	27.8%	139.93	153.64
44	178.76	0.0%	28.0%	139.67	153.01
45	182.93	2.3%	31.6%	139.00	149.10
46	186.80	2.1%	35.8%	137.54	149.04
47	188.77	1.1%	36.8%	137.96	149.13
48	189.04	0.1%	36.7%	138.24	148.01
49	189.31	0.1%	35.9%	139.25	146.30
50	189.69	0.2%	36.6%	138.89	146.62
51	190.00	0.2%	37.1%	138.62	144.94
52		-	-100.0%	138.62	143.57



Sheepmeat Information for Week 51

NOTE: EU PRICES ARE PROVISIONAL AT THE TIME OF PUBLICATION AND MAY NOT BE REFLECTIVE OF THE CURRENT PERIOD

Irish Prices €/100 kg	2019	2018	Change
Ave Factory Price	478.70	470.77	1.7%
Ave Mart Price	404.27	397.39	1.7%
National Ave Price	456.37	448.75	1.7%
YTD Ave	460.08	482.41	-4.6%

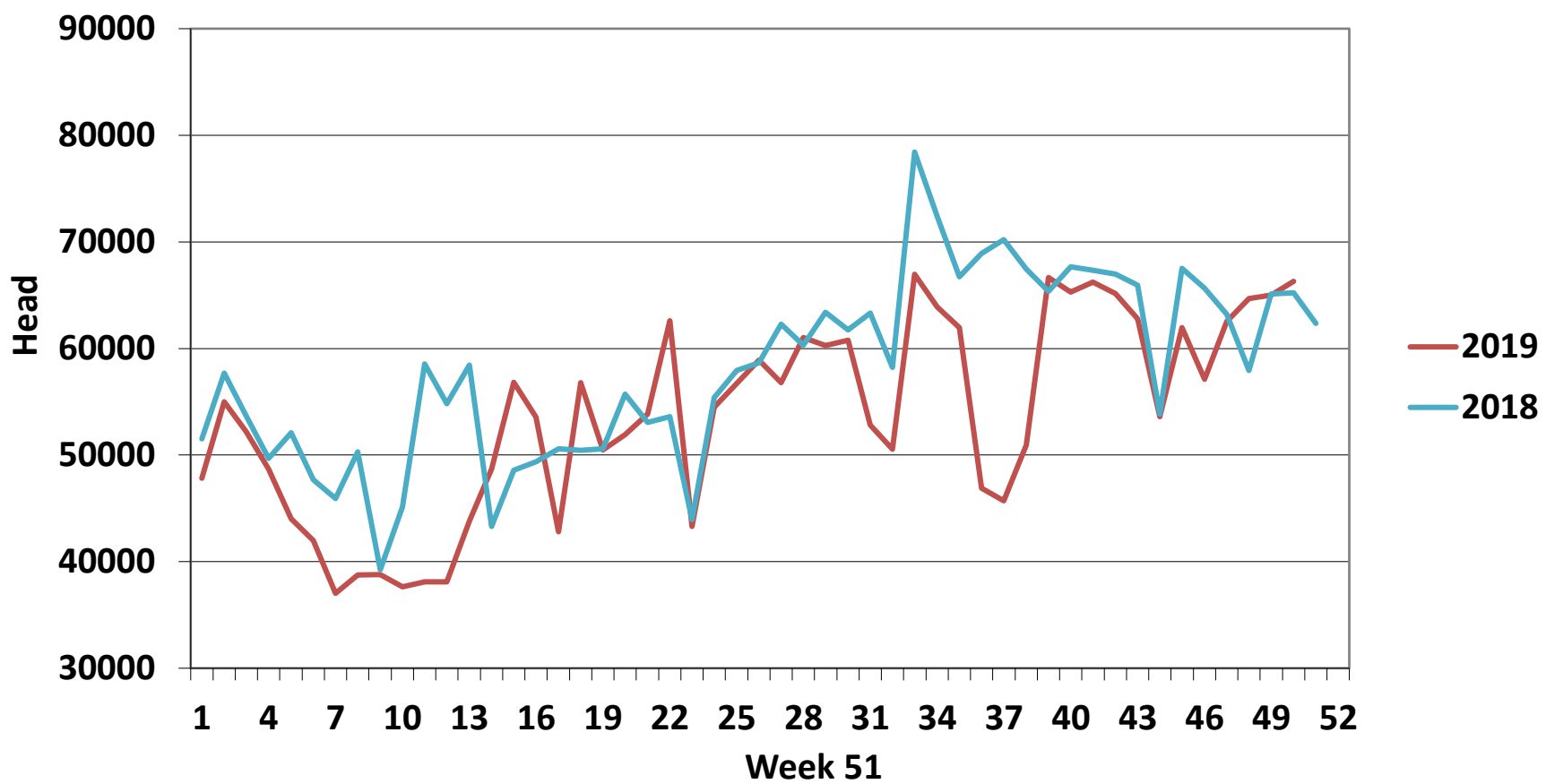
EU Market Rates Heavy Lambs	€/100kg
Belgium	465.9
Denmark	512.7
Germany	518.5
Spain	614.1
France	670.0
Croatia	583.7
Ireland	456.4
Italy	644.0
Cyprus	652.0
Latvia	346.0
Lithuania	377.8
Netherlands	472.7
Austria	568.0
Poland	435.9
Romania	263.5
Finland	387.0
Sweden	436.0
Northern Ireland	452.3
Great Britain	513.4
United Kingdom	509.1
Community	532.7

Slaughterings	2019	2018	Change
Weekly	64,771	62,350	4%
YTD	2,753,361	2,963,410	-7%

**REPORT ON SLAUGHTERING AT SHEEP EXPORT PREMISES
WEEK 50**

CATEGORY	2019		2018		DIFFERENCE	
	Weekly	Cumulative	Weekly	Cumulative	Weekly	Cumulative
Lambs/Hoggets	57	739,019	72	829,887	-15	- 90,868
Spring Lambs	55,683	1,607,626	53,891	1,630,971	1,792	- 23,345
Ewes and Rams	7,973	405,082	8,382	502,371	-409	- 97,289
Light Lambs	1,058	1,634	5	181	1,053	1,453
TOTAL	64,771	2,753,361	62,350	2,963,410	2,421	-210,049

Weekly Sheep Slaughterings



Ave. Price €/100 kg for Sheepmeat

